

V&V Reference Report

L2 ASCDS Version : 8.4.4

Observation 9065 - L2 Version 2
Chandra X-Ray Center

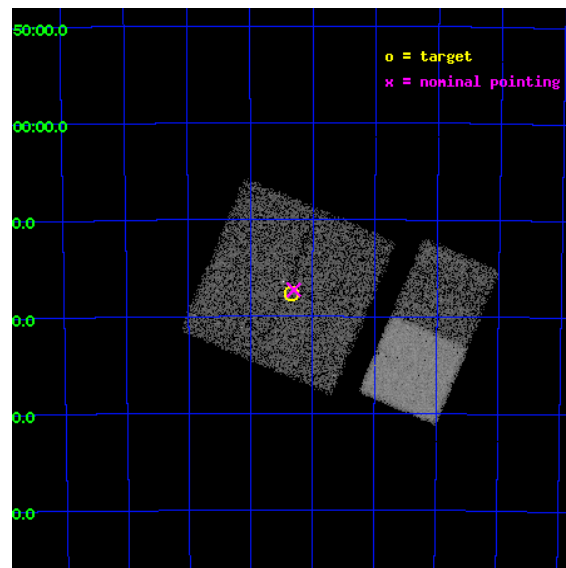
L2 Processing Date : May 6 2012

Contents

1	Front	2
2	OBI	3
2.1	OBI	3
2.1.1	Images	3
2.1.2	Bias	3
2.1.3	Parameters	4
2.1.4	Events	4
2.2	Compared Parameters	5
2.3	Aspect	6
2.4	Star Slots	9
2.4.1	Slot 3	9
2.4.2	Slot 4	10
2.4.3	Slot 5	11
2.4.4	Slot 6	12
2.4.5	Slot 7	13
2.5	FID Slots	14
2.5.1	Slot 0	14
2.5.2	Slot 1	15
2.5.3	Slot 2	16
A	Summary	17
A.1	Status	17
A.2	Comments	17

1 Front

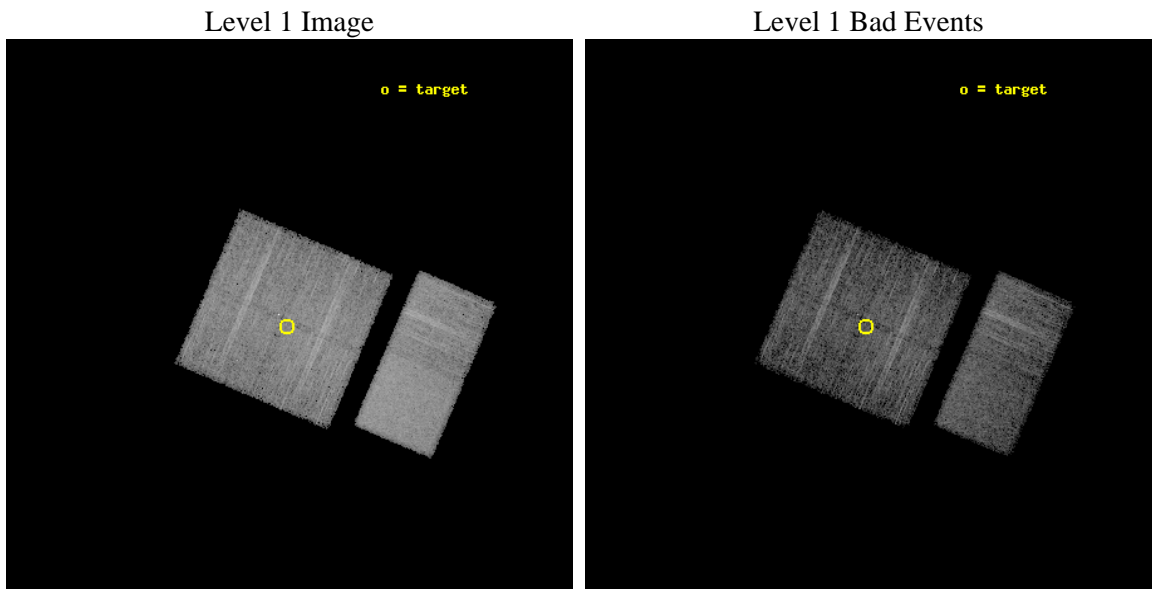
seq_num	400916	Sequence number
obs_id	9065	Observation id
title	Localization and Spectra of INTEGRAL-Selected Sources in the Galactic Plane	Proposal title
observer	Dr. John Tomsick	Principal investigator
object	IGR J14471-6414	Source name
dtcycle	0	
cycle	P	events from which exps? Prim/Second/Both
ra_targ	221.5875	Observer's specified target RA [deg]
dec_targ	-64.293889	Observer's specified target Dec [deg]
ra_nom	221.57547445999	Nominal RA [deg]
dec_nom	-64.287705442994	Nominal Dec [deg]
roll_nom	113.21569936135	Nominal Roll [deg]
revision	2	Processing version of data
ontime	5177.5999807715	Sum of GTIs [s]
livetime	5112.0380922386	Livetime [s]
ontime0	5177.5999807715	Sum of GTIs [s]
ontime1	5177.5999807715	Sum of GTIs [s]
ontime2	5174.3589805961	Sum of GTIs [s]
ontime3	5177.5999807715	Sum of GTIs [s]
ontime6	5177.5999807715	Sum of GTIs [s]
ontime7	5177.5999807715	Sum of GTIs [s]
l2events	56804	Number of level 2 events



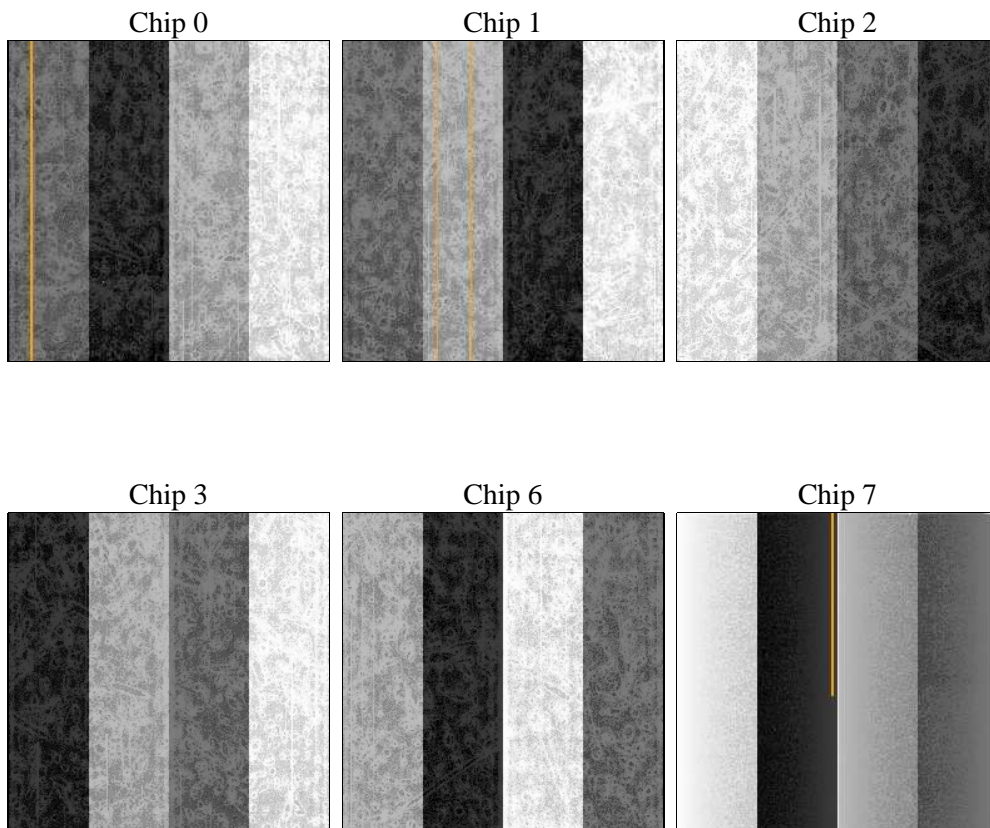
2 OBI

2.1 OBI

2.1.1 Images



2.1.2 Bias



2.1.3 Parameters

obi_num	0	Obi number	sched_exp_time	5000.000000	[s] Scheduled observation exposure time
ascdsver	8.4.4	Processing system revision	ontime	5177.5999807715	Sum of GTIs [s]
caldsver	4.4.9	 	ontime0	5177.5999807715	Sum of GTIs [s]
date	2012-05-06T14:50:24	Date and time of file creation	ontime1	5177.5999807715	Sum of GTIs [s]
revision	2	Processing version of data	ontime2	5174.3589805961	Sum of GTIs [s]
			ontime3	5177.5999807715	Sum of GTIs [s]
			ontime6	5177.5999807715	Sum of GTIs [s]
			ontime7	5177.5999807715	Sum of GTIs [s]
			l1events	324442	Number of level 1 events

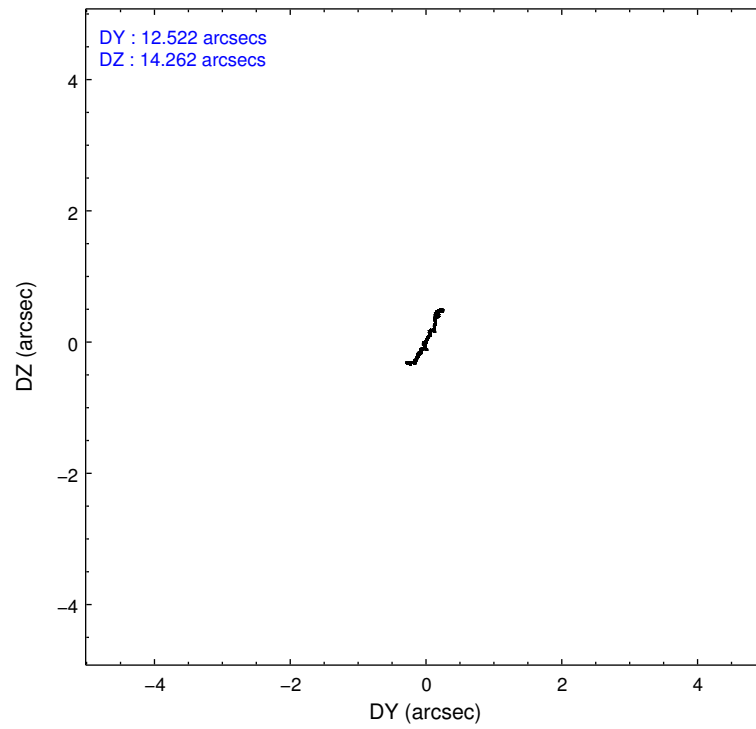
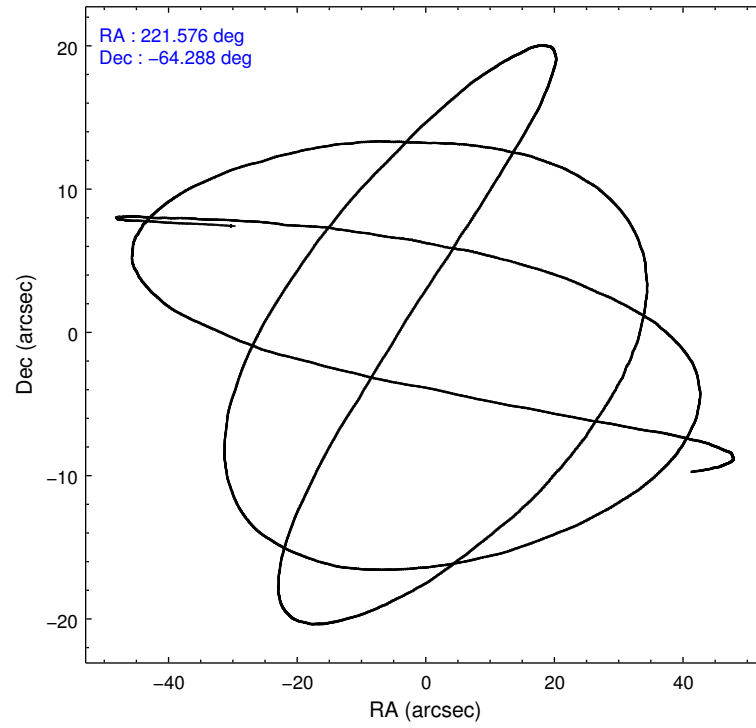
2.1.4 Events

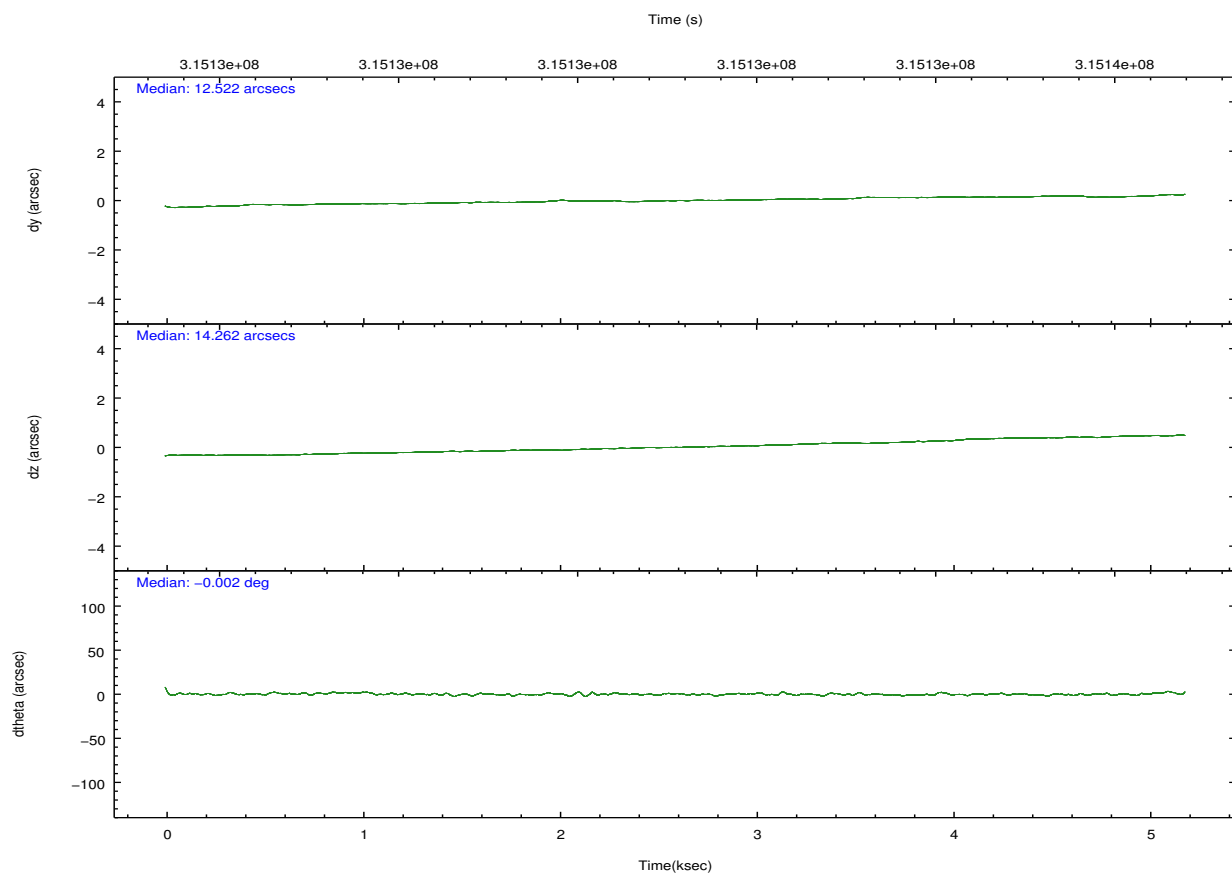
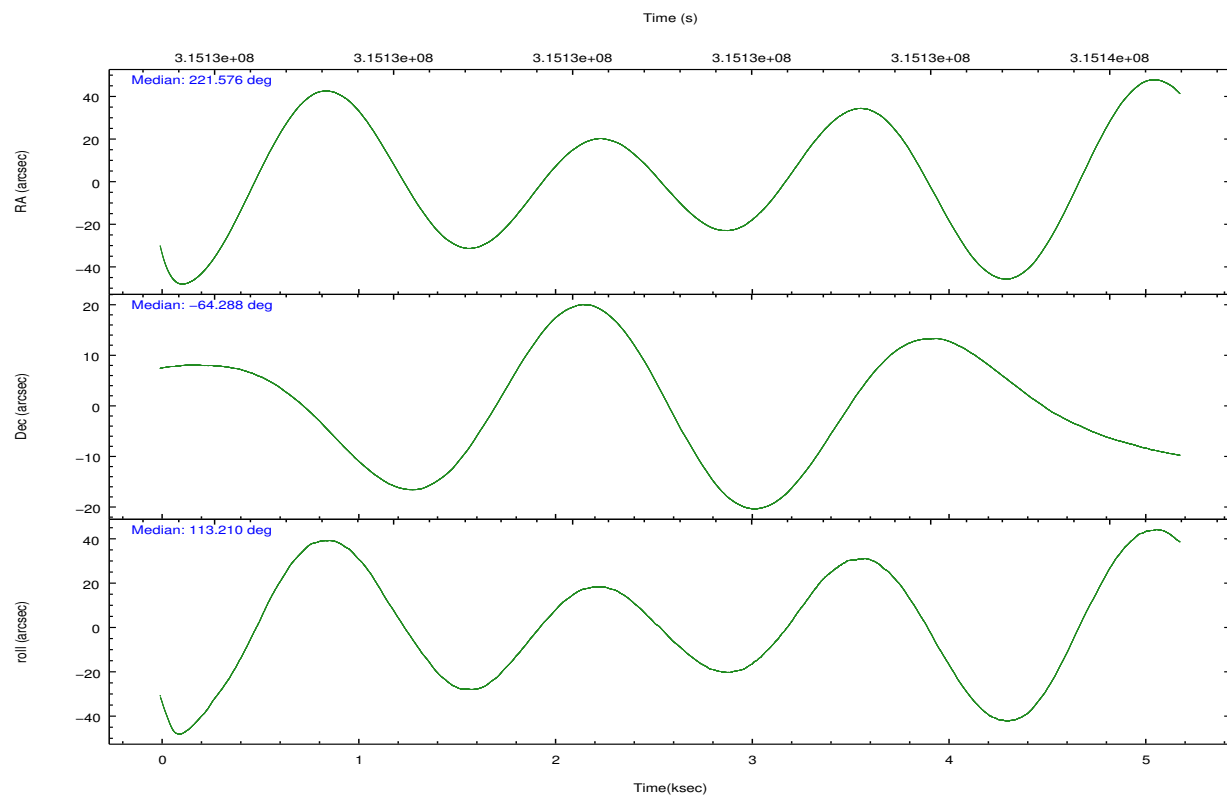
	ccd 0	ccd 1	ccd 2	ccd 3	ccd 6	ccd 7		ccd 0	ccd 1	ccd 2	ccd 3	ccd 6	ccd 7
level 1 events	47539	46552	51344	51676	55795	71536	grade 0 events	3277	2716	2808	2893	2477	2652
rejected events	40475	39780	45243	45382	49533	42143		6%	5%	5%	5%	4%	3%
rejected %	85%	85%	88%	87%	88%	58%	grade 1 events	86	33	28	23	30	85
								0%	0%	0%	0%	0%	0%
							grade 2 events	1465	1562	1297	1237	1441	6124
								3%	3%	2%	2%	2%	8%
							grade 3 events	657	669	553	627	578	2513
								1%	1%	1%	1%	1%	3%
							grade 4 events	620	624	579	552	589	2544
								1%	1%	1%	1%	1%	3%
							grade 5 events	2098	2272	2122	2421	2538	6707
								4%	4%	4%	4%	4%	9%
							grade 6 events	1175	1321	981	1092	1306	16093
								2%	2%	1%	2%	2%	22%
							grade 7 events	38161	37355	42976	42831	46836	34818
								80%	80%	83%	82%	83%	48%

2.2 Compared Parameters

Parameter	Planned	Actual	Parameter	Planned	Actual
Instrument	ACIS	ACIS	Obspar format version number	7	7
Detector	ACIS-012367	ACIS-012367	Obspar file type	PREDICTED	ACTUAL
Grating	NONE	NONE	Obspar update status	NONE	UPDATED
Data mode	FAINT	FAINT	CCD I0 on	Y	Y
Observation mode	POINTING	POINTING	CCD I1 on	Y	Y
[deg] Pointing RA	221.626355	221.5754744599904	CCD I2 on	Y	Y
[deg] Pointing Dec	-64.304112	-64.28770544299358	CCD I3 on	Y	Y
[deg] Pointing Roll	113.052866	113.2156993613469	CCD S0 on	N	N
[mm] SIM focus pos	-0.782348	-0.7809083437167272	CCD S1 on	N	N
[mm] SIM defocus	0	0.001439871863259334	CCD S2 on	O1	Y
[mm] SIM translation stage pos	-233.592463	-233.5874344608287	CCD S3 on	O2	Y
[mm] SIM translation stage offset	0	-0.005018542100998502	CCD S4 on	N	N
[s] Observation start time (MET)	315130126.184000	315129003.90834	CCD S5 on	N	N
Observation start date	2007-12-27T08:07:41	2007-12-27T07:50:03	Number of optional ACIS chips dropped	0	0
[s] Observation end time (MET)	315135126.184000	315136212.22119	On-chip summing requested	N	N
Observation end date	2007-12-27T09:31:01	2007-12-27T09:50:12	Subarray requested	NONE	NONE
Read mode	TIMED	TIMED	Alternating exposures requested	N	N
			[s] Primary exposure time	0.000000	3.2

2.3 Aspect



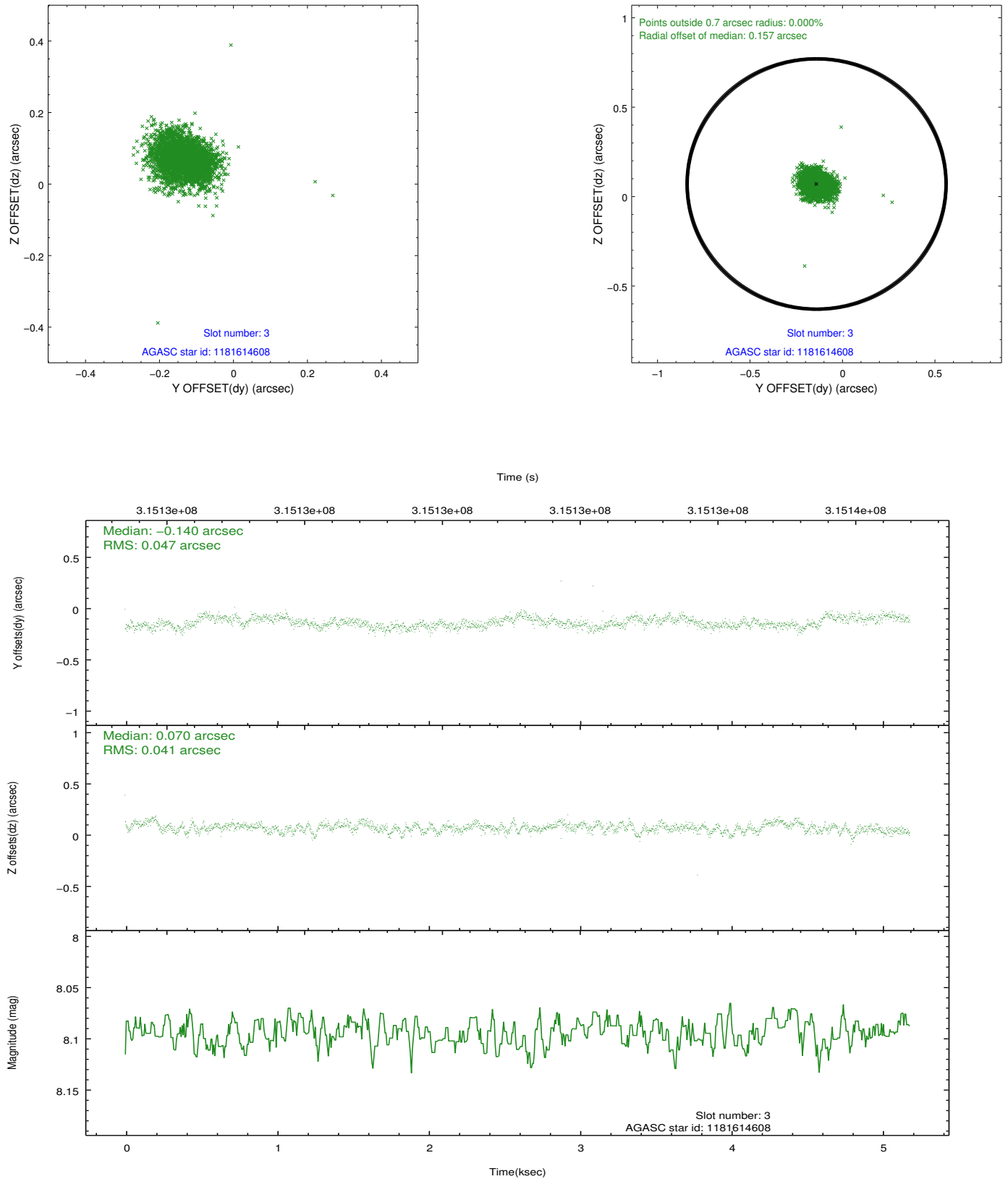


Slot Statistics

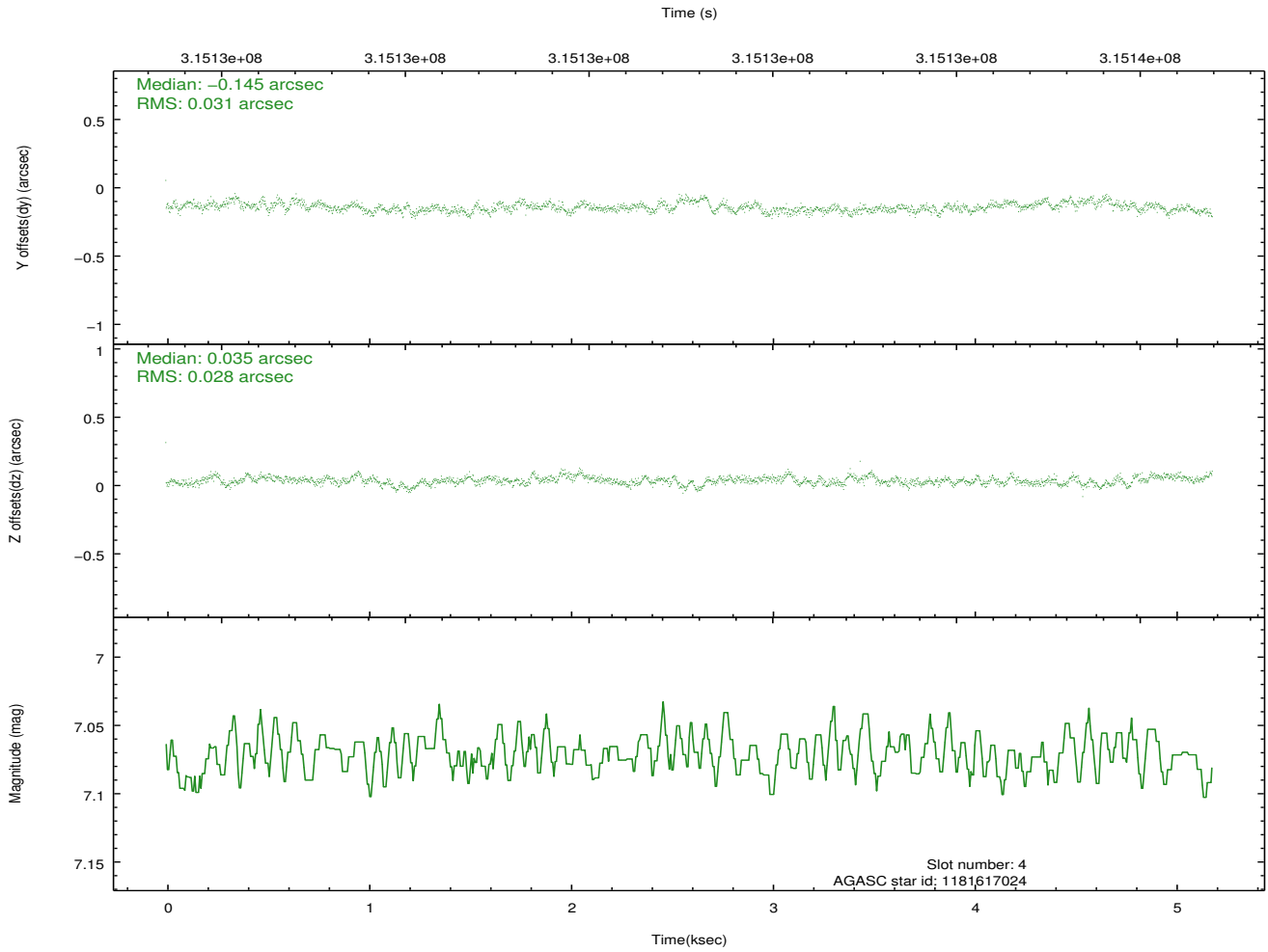
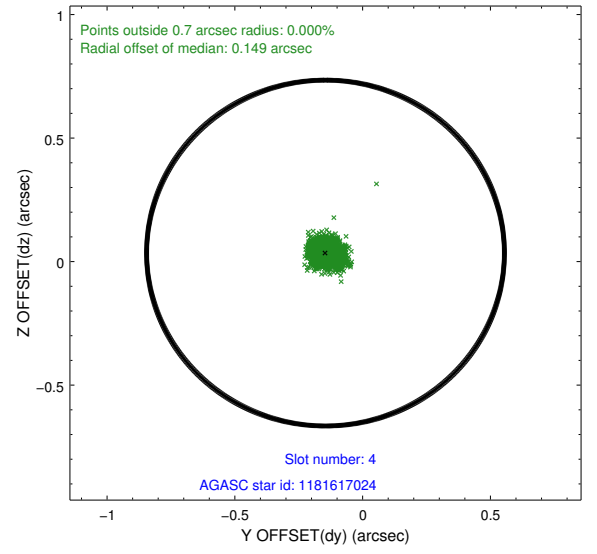
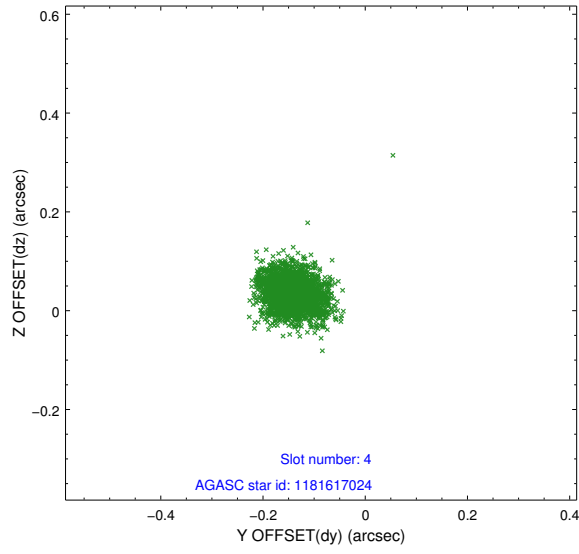
slot	status	id	mag	n_pts	med_dy	med_dz	dr1	dr2	ra	dec	mean_y	mean_z
0	FID	ACIS-I-2	7.13	1265	-0.153	-0.085	0.010	0.018	0.000000	0.000000	-767.33	-844.32
1	FID	ACIS-I-4	7.17	1265	0.115	0.069	0.008	0.014	0.000000	0.000000	2146.48	1061.39
2	FID	ACIS-I-6	7.23	1265	-0.062	0.080	0.014	0.022	0.000000	0.000000	394.36	1704.93
3	GUIDE	1181614608	8.09	2529	-0.140	0.070	0.065	0.101	221.990932	-63.809363	1410.68	-1228.96
4	GUIDE	1181617024	7.07	2528	-0.145	0.035	0.044	0.073	221.990544	-63.928404	1018.15	-1058.88
5	GUIDE	1181617096	8.47	2528	0.038	-0.110	0.064	0.105	221.677781	-64.761417	-1545.18	571.96
6	GUIDE	1181620616	9.17	2530	0.181	-0.132	0.080	0.133	221.424757	-64.934600	-1968.76	1172.37
7	GUIDE	1183328536	8.61	2521	0.064	0.135	0.086	0.143	223.252505	-64.325321	-1093.49	-2290.03

2.4 Star Slots

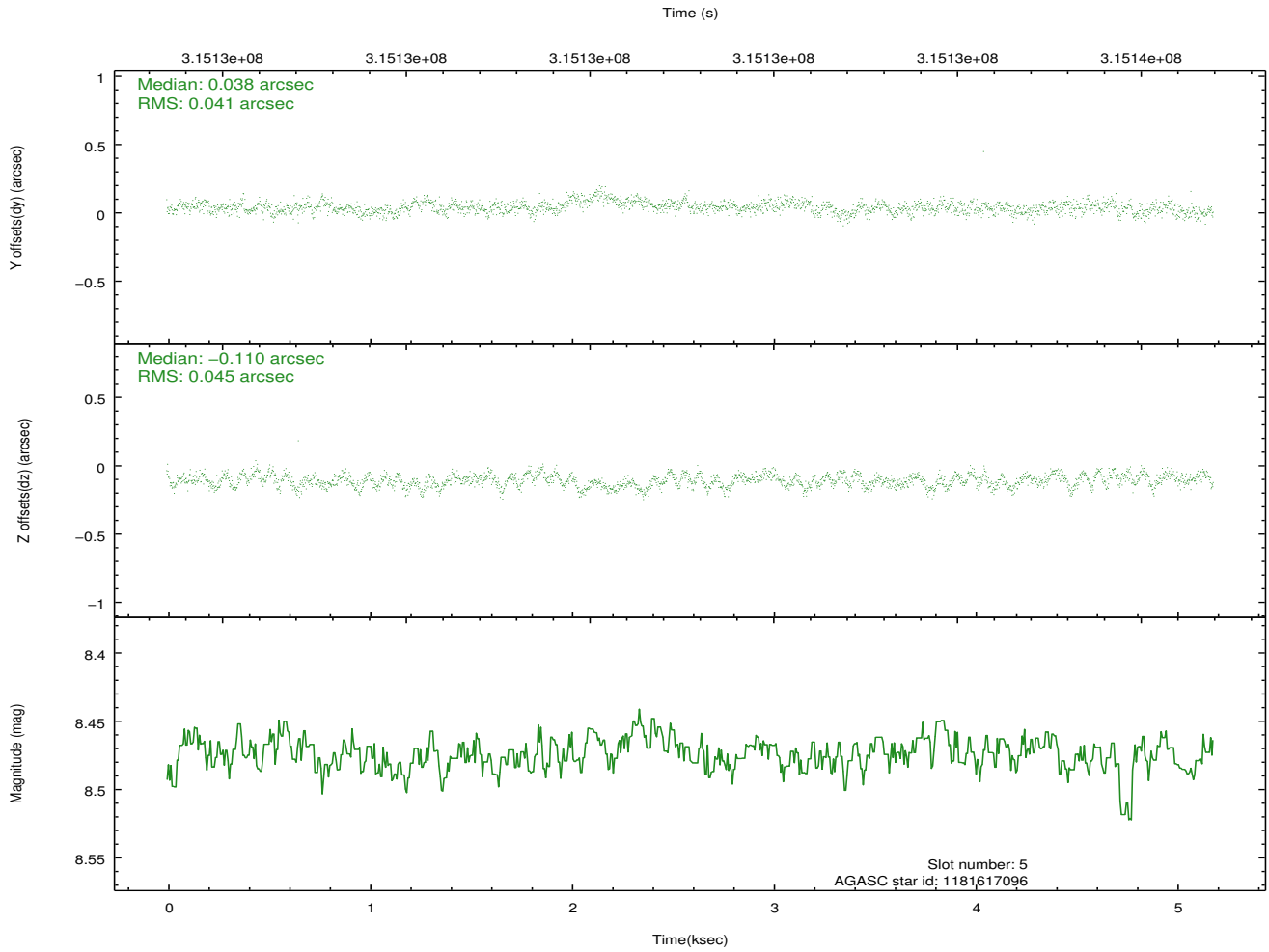
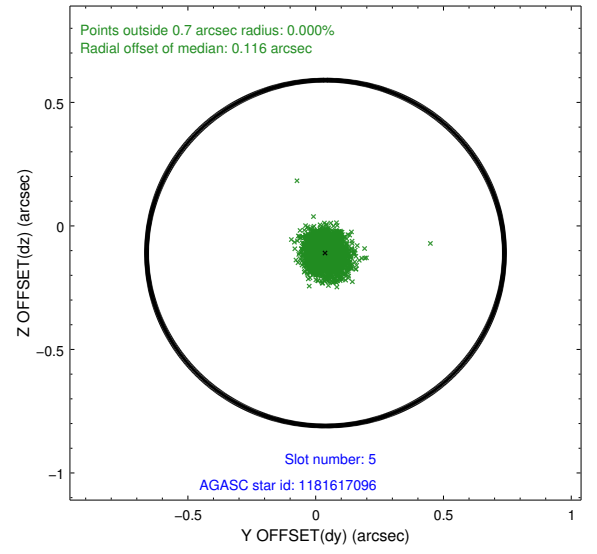
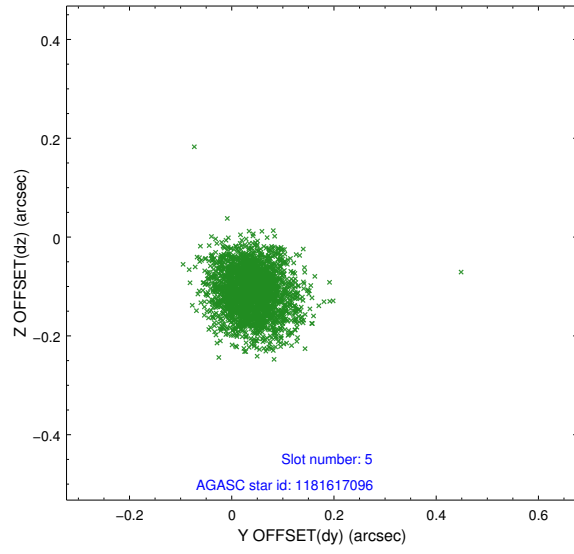
2.4.1 Slot 3



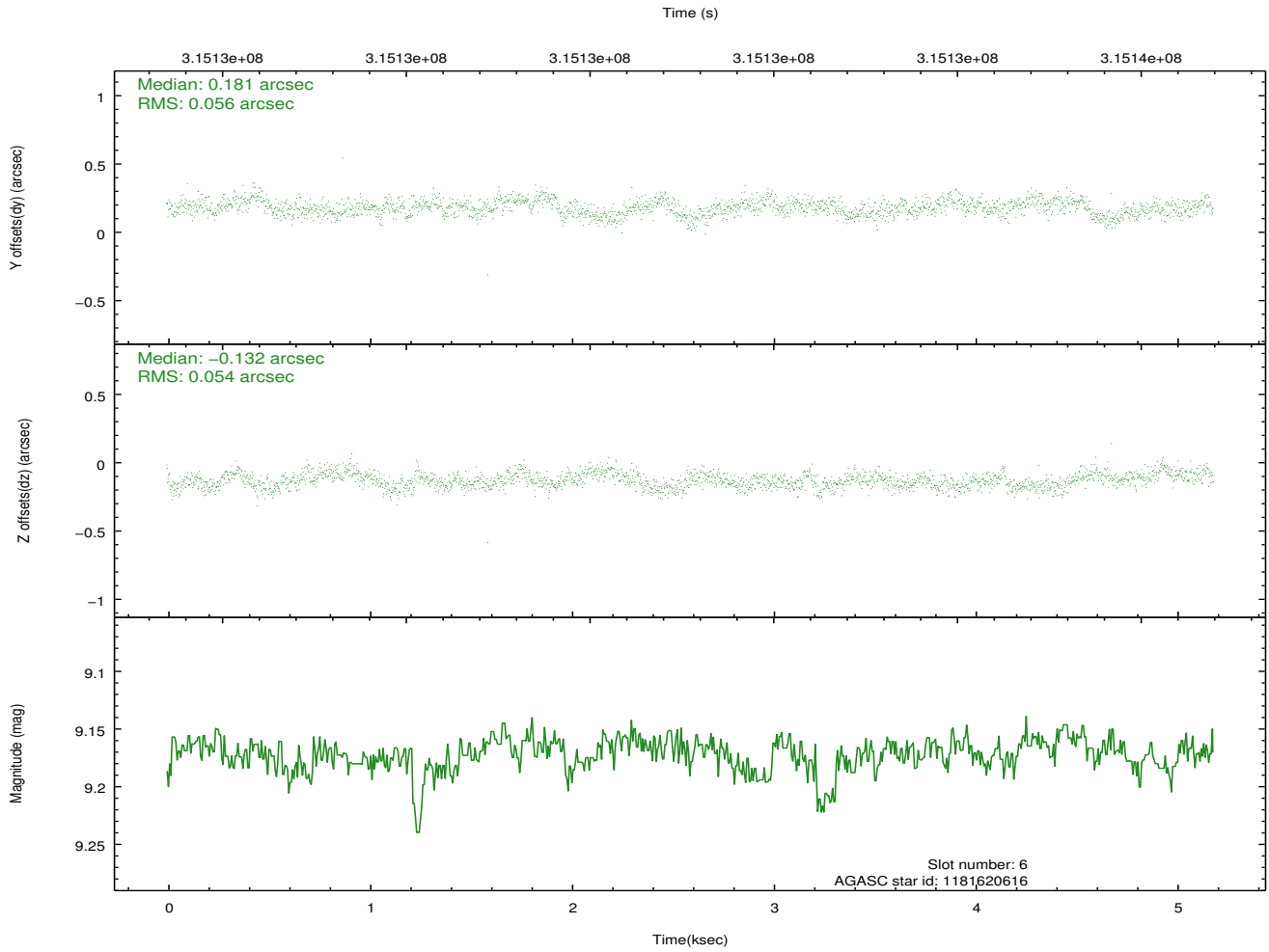
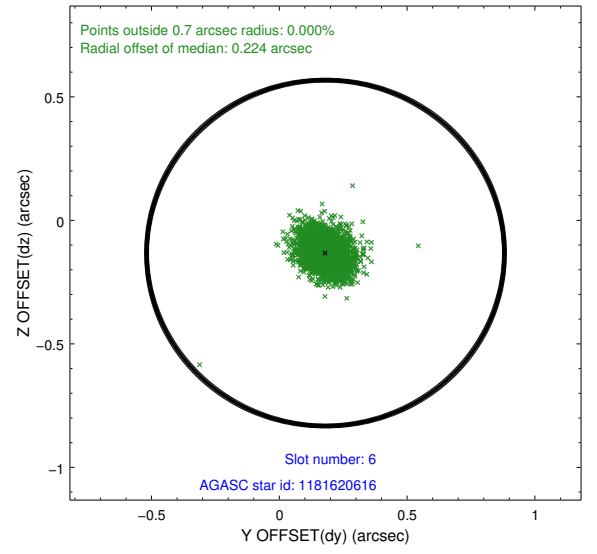
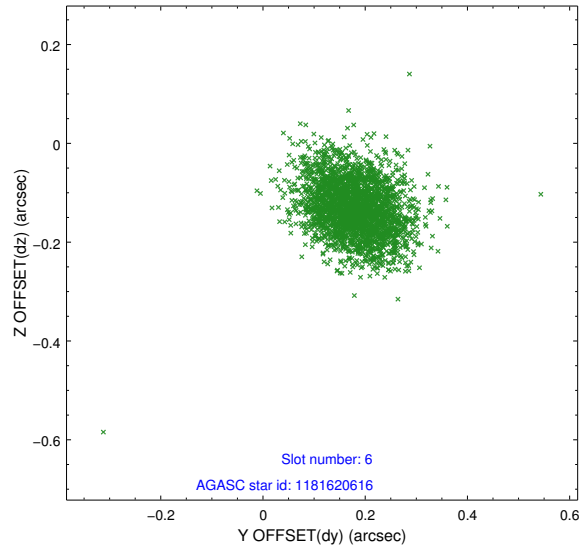
2.4.2 Slot 4



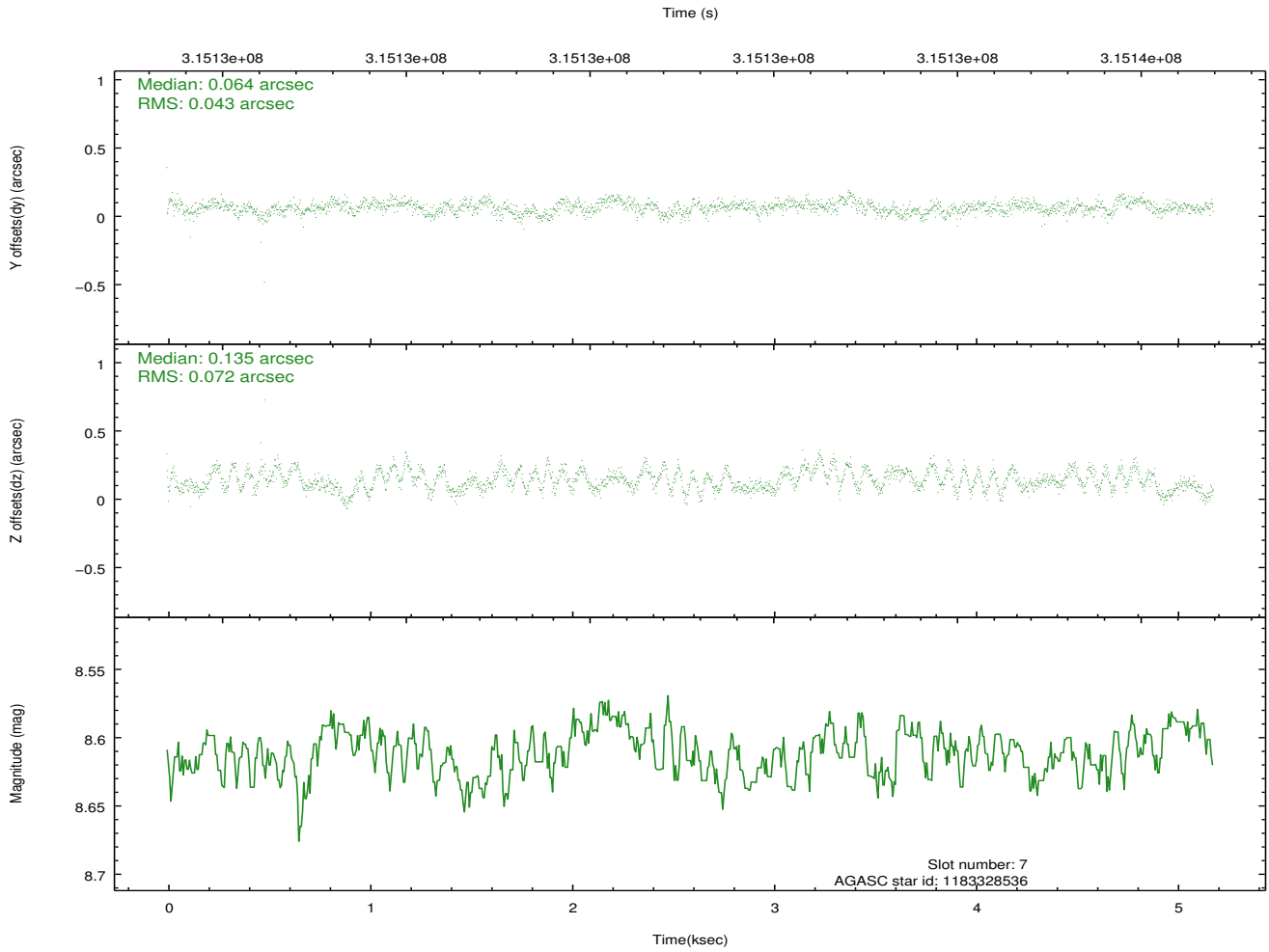
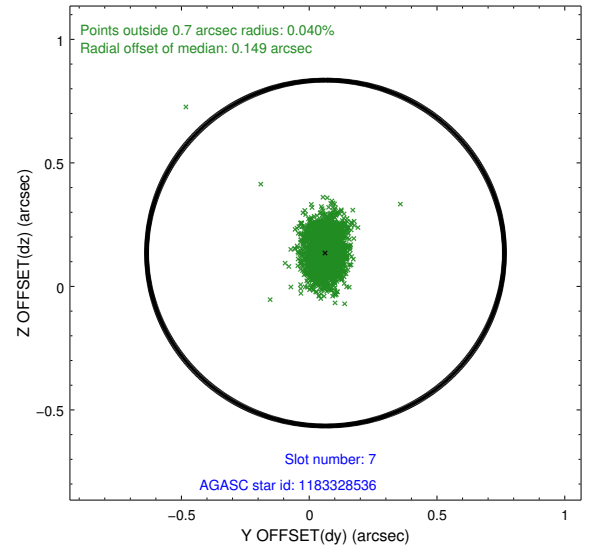
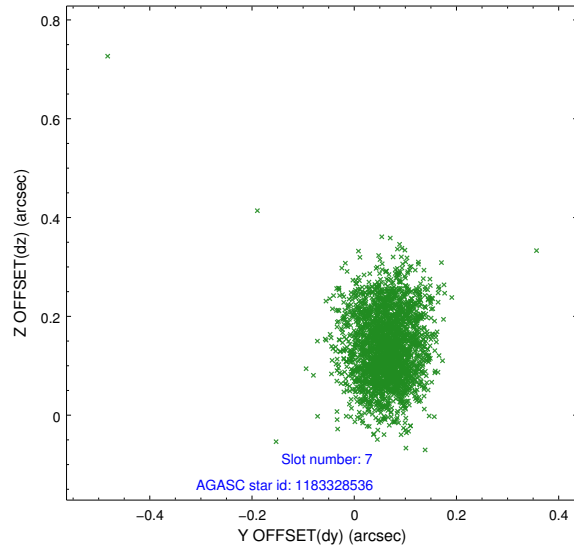
2.4.3 Slot 5



2.4.4 Slot 6

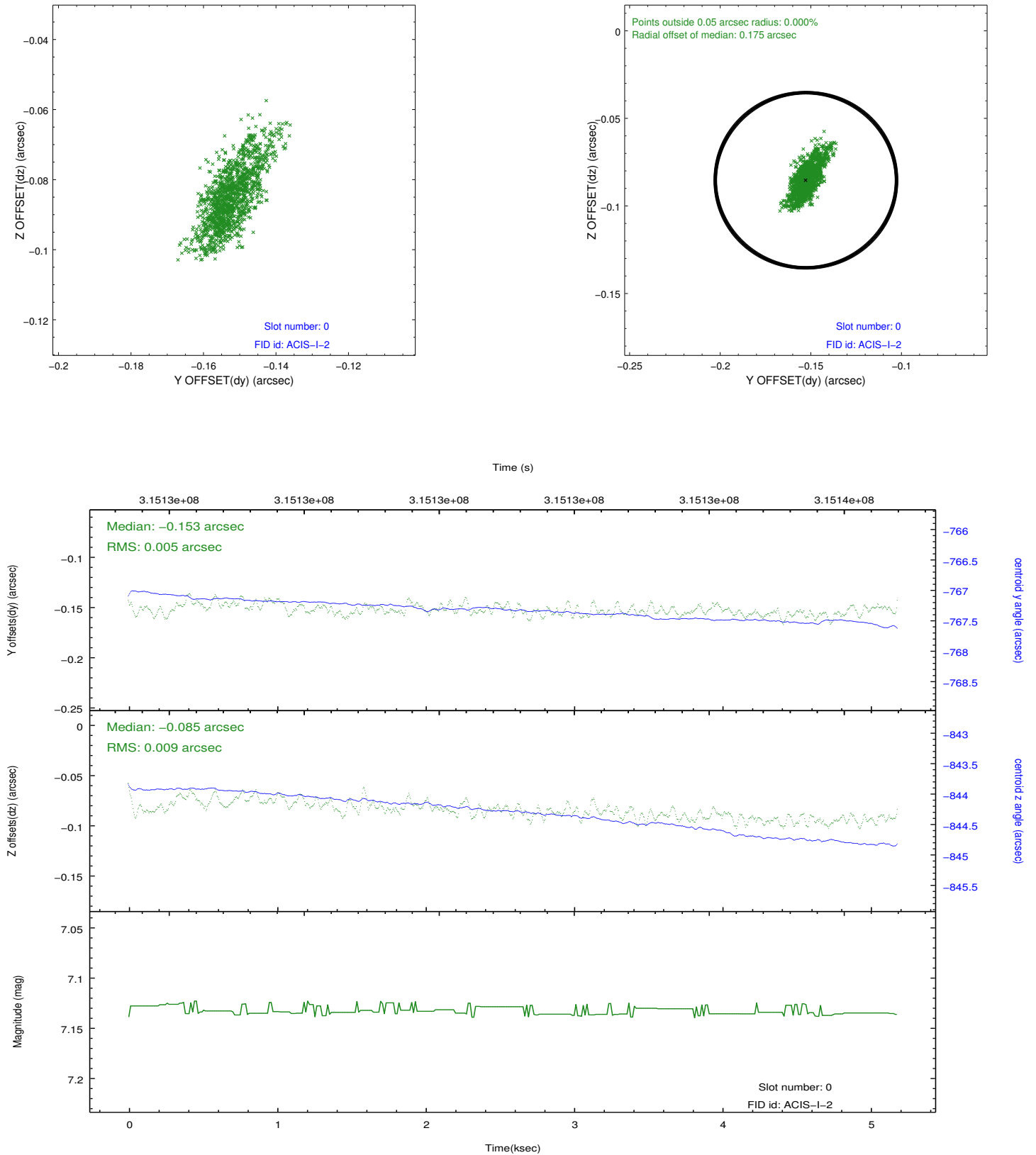


2.4.5 Slot 7

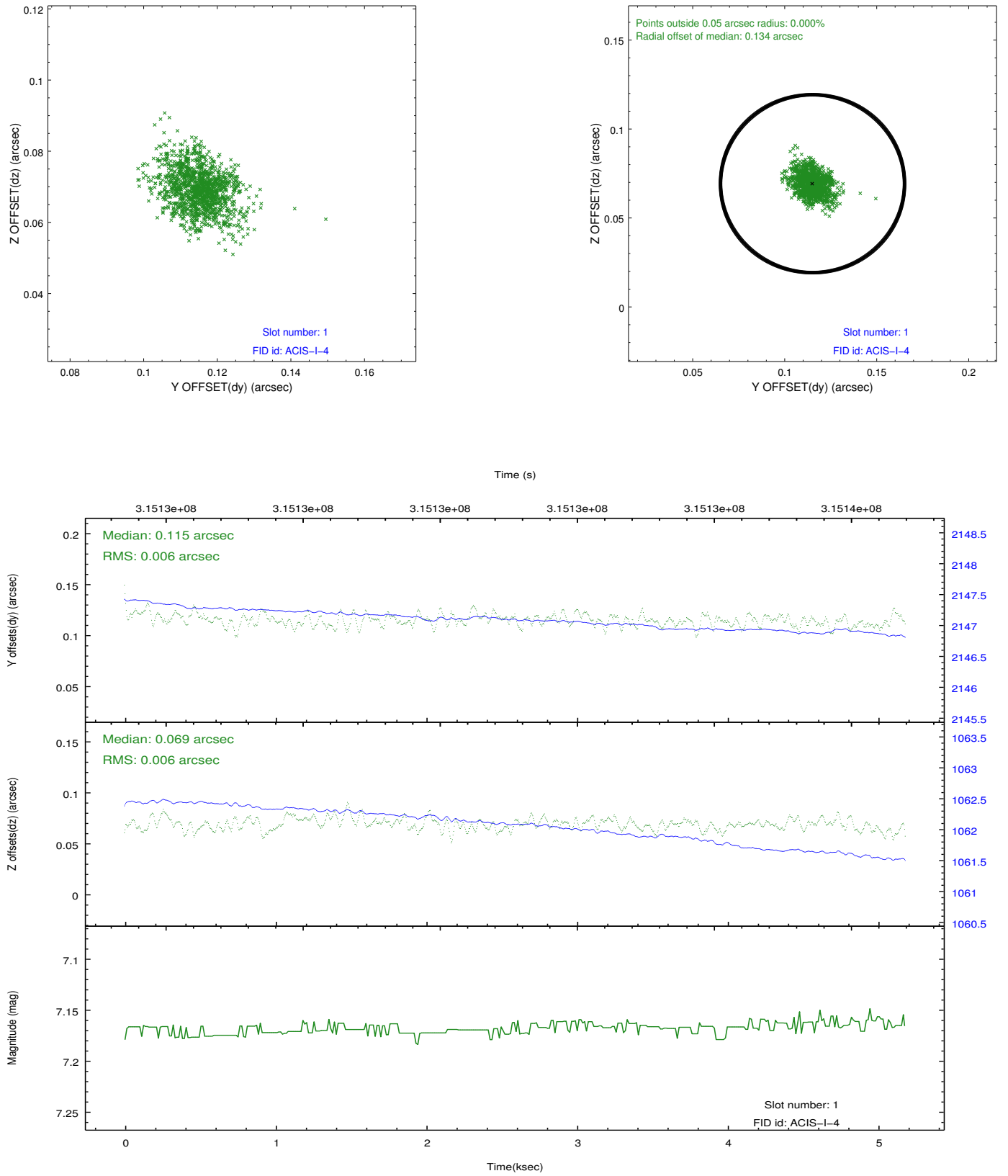


2.5 FID Slots

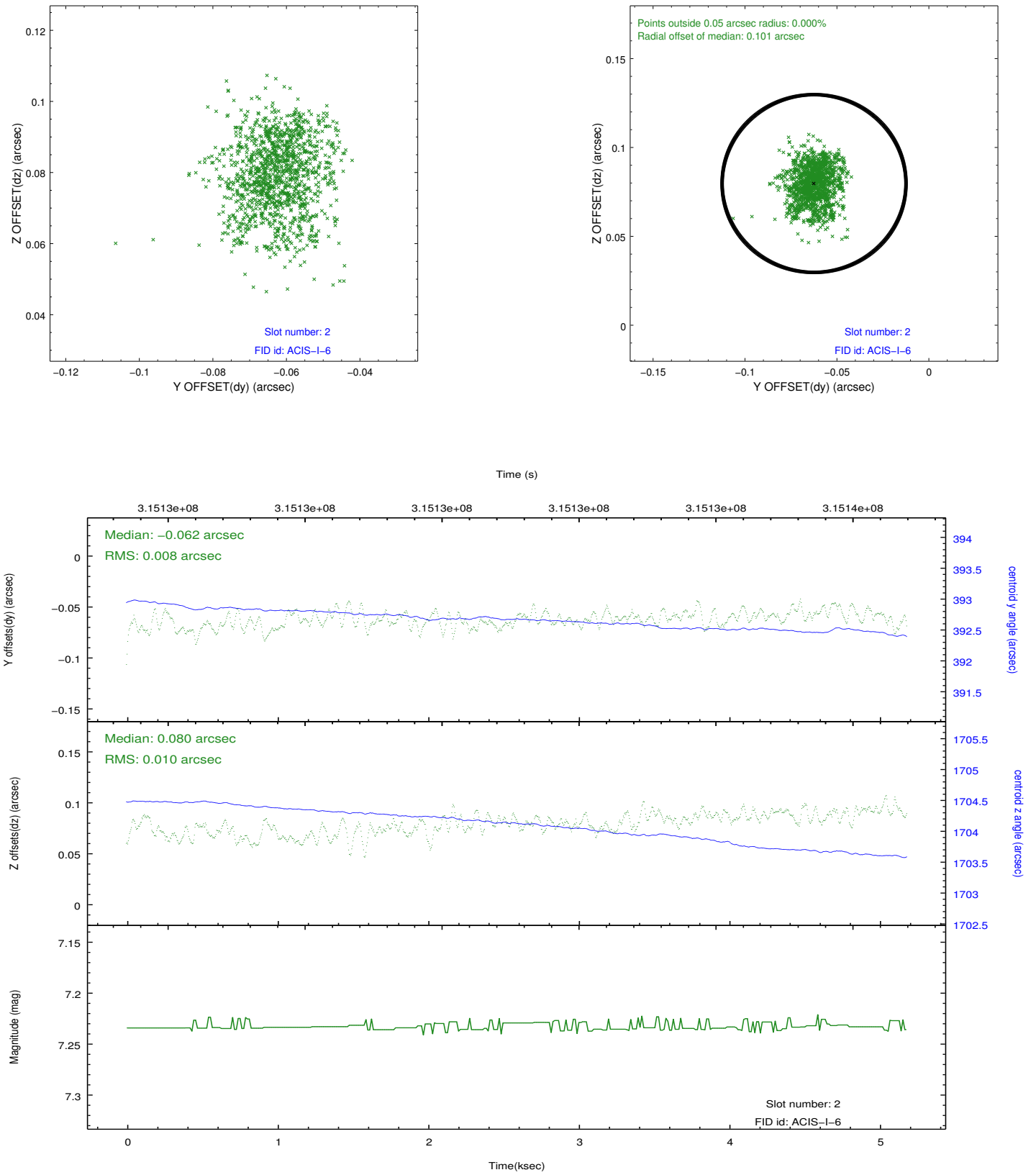
2.5.1 Slot 0



2.5.2 Slot 1



2.5.3 Slot 2



A Summary

A.1 Status

V&V Scientist	Beth Sundheim
V&V Date (YYYY-MM-DD)	2012.05.08
V&V Edition	1
V&V Disposition and Status	OK
V&V Charge Time	5.17759998

A.2 Comments

Joint proposal with NOAO.