

V&V Reference Report

L2 ASCDS Version : 8.4.4

Observation 8660 - L2 Version 2
Chandra X-Ray Center

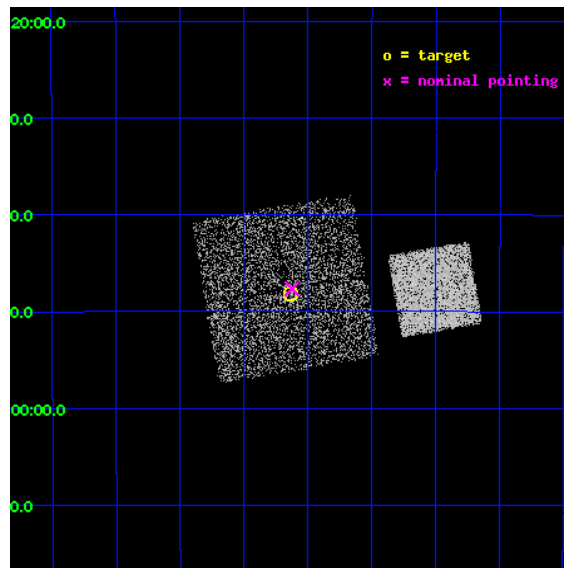
L2 Processing Date : May 14 2012

Contents

1	Front	2
2	OBI	3
2.1	OBI	3
2.1.1	Images	3
2.1.2	Bias	3
2.1.3	Parameters	4
2.1.4	Events	4
2.2	Compared Parameters	5
2.3	Aspect	6
2.4	Star Slots	9
2.4.1	Slot 3	9
2.4.2	Slot 4	10
2.4.3	Slot 5	11
2.4.4	Slot 6	12
2.4.5	Slot 7	13
2.5	FID Slots	14
2.5.1	Slot 0	14
2.5.2	Slot 1	15
2.5.3	Slot 2	16
A	Summary	17
A.1	Status	17
A.2	Comments	17

1 Front

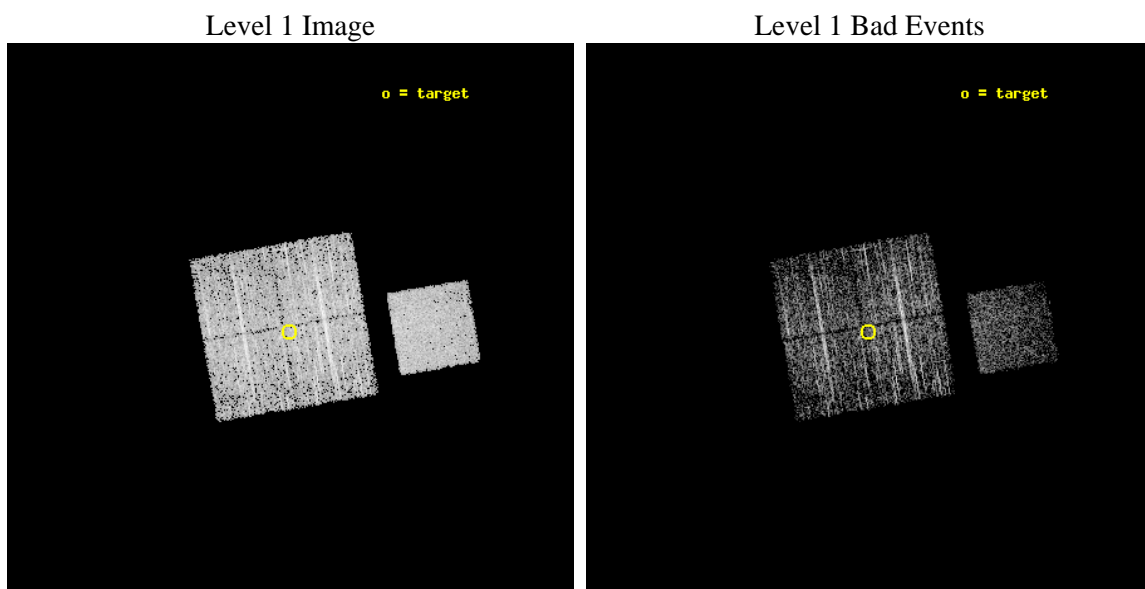
seq_num	400711	Sequence number
obs_id	8660	Observation id
title	The Galactic Bulge Survey: categorising the plethora of faint X-ray sources in the Galactic Bulge	Proposal title
observer	Prof Mariano Mendez	Principal investigator
object	GBSGTO2	Source name
dtcycle	0	
cycle	P	events from which exps? Prim/Second/Both
ra_targ	266.157407	Observer's specified target RA [deg]
dec_targ	-26.802621	Observer's specified target Dec [deg]
ra_nom	266.1562538622	Nominal RA [deg]
dec_nom	-26.794477477198	Nominal Dec [deg]
roll_nom	80.208045159606	Nominal Roll [deg]
revision	2	Processing version of data
ontime	2188.6000168324	Sum of GTIs [s]
livetime	2160.0043463885	Livetime [s]
ontime0	2188.6000168324	Sum of GTIs [s]
ontime1	2188.6000168324	Sum of GTIs [s]
ontime2	2188.6000168324	Sum of GTIs [s]
ontime3	2188.6000168324	Sum of GTIs [s]
ontime7	2188.6000168324	Sum of GTIs [s]
l2events	15516	Number of level 2 events



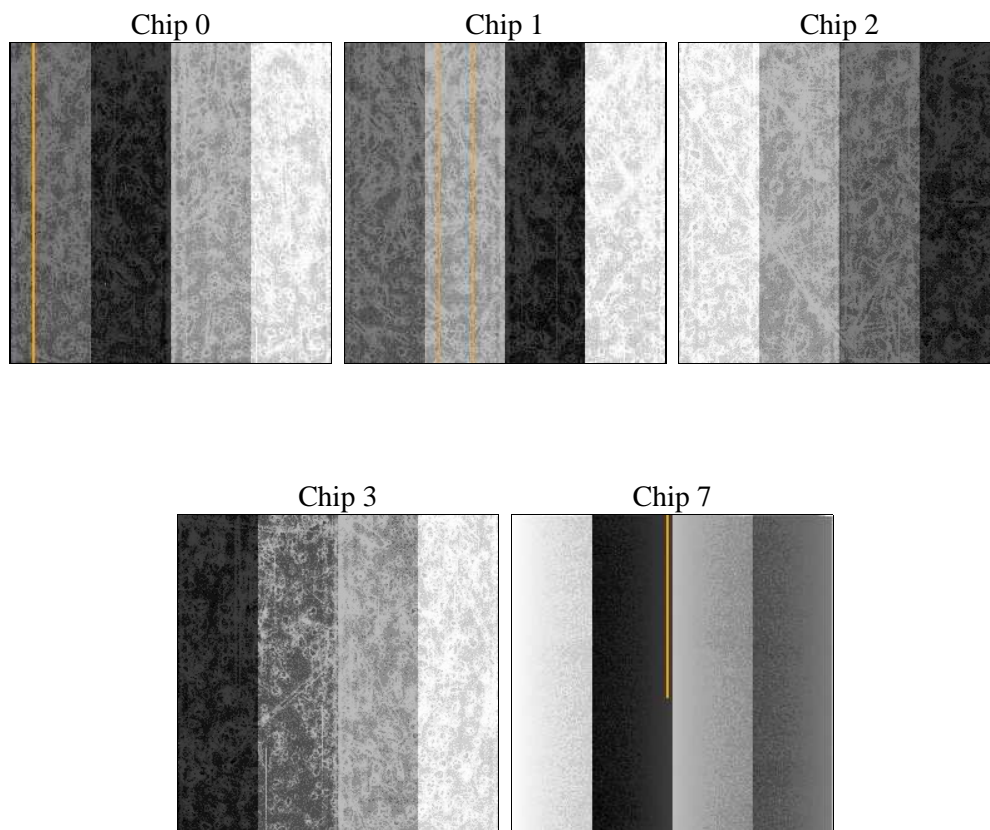
2 OBI

2.1 OBI

2.1.1 Images



2.1.2 Bias



2.1.3 Parameters

obi_num	1	Obi number	sched_exp_time	2000.000000	[s] Scheduled observation exposure time
ascdsver	8.4.4	Processing system revision	ontime	2188.6000168324	Sum of GTIs [s]
caldsver	4.4.9	 	ontime0	2188.6000168324	Sum of GTIs [s]
date	2012-05-15T00:15:48	Date and time of file creation	ontime1	2188.6000168324	Sum of GTIs [s]
revision	2	Processing version of data	ontime2	2188.6000168324	Sum of GTIs [s]
			ontime3	2188.6000168324	Sum of GTIs [s]
			ontime7	2188.6000168324	Sum of GTIs [s]
			l1events	100904	Number of level 1 events

2.1.4 Events

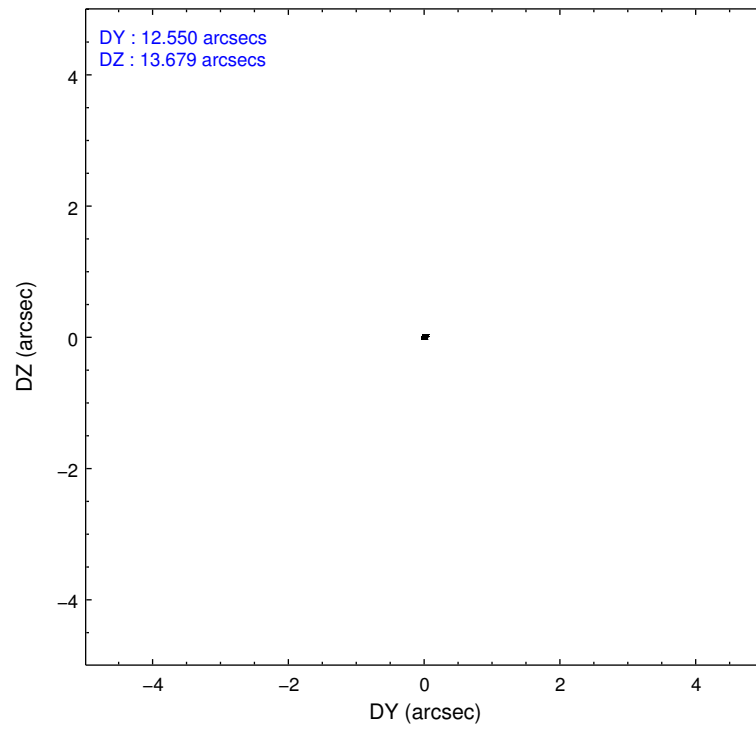
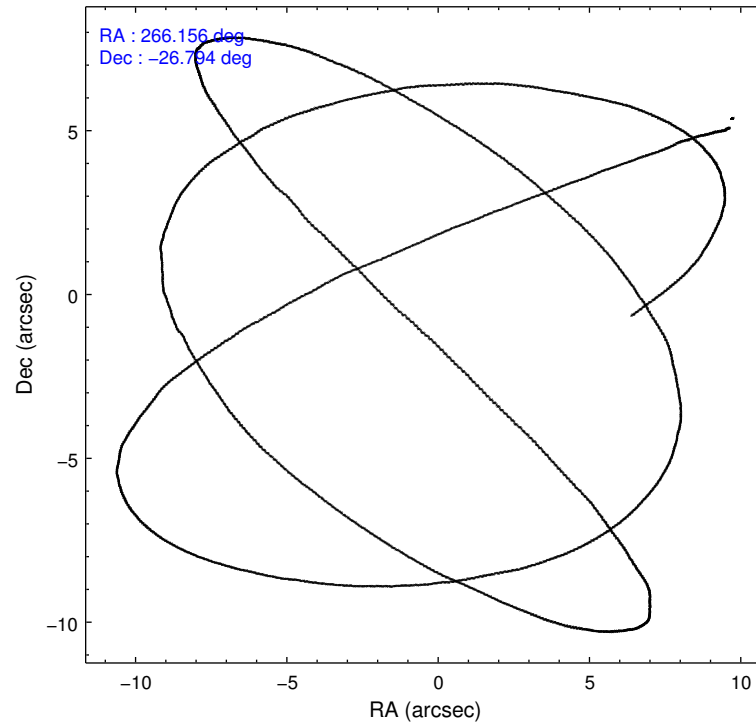
	ccd 0	ccd 1	ccd 2	ccd 3	ccd 7
level 1 events	17617	18328	21453	21335	22171
rejected events	15528	16126	19481	19464	13185
rejected %	88%	87%	90%	91%	59%

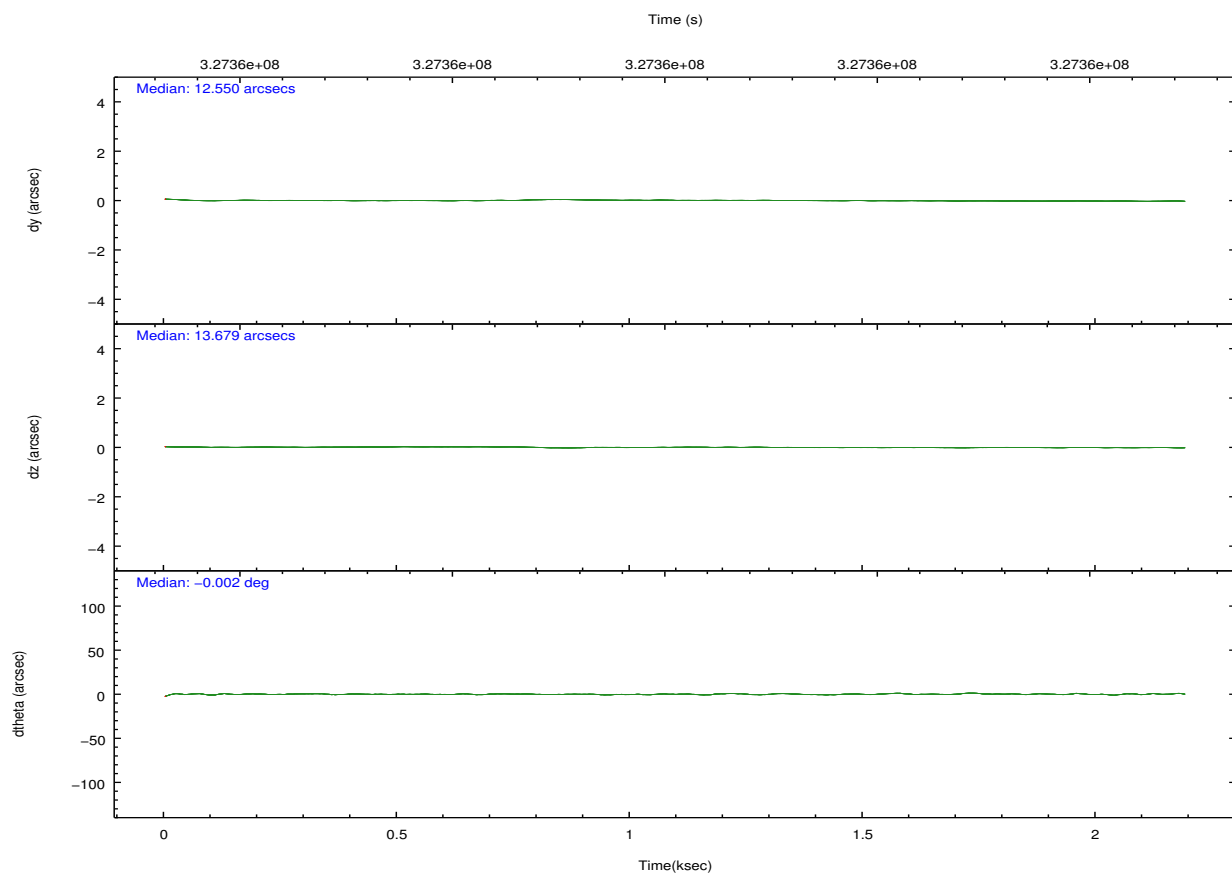
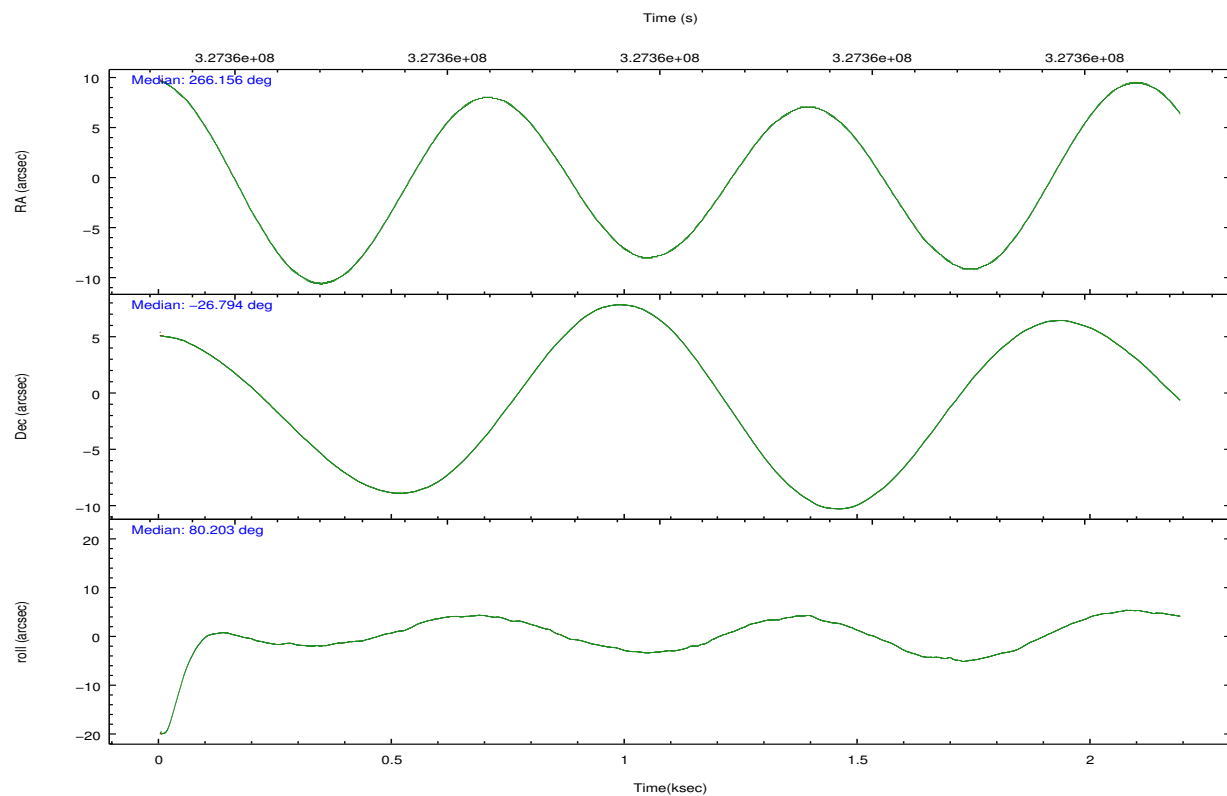
	ccd 0	ccd 1	ccd 2	ccd 3	ccd 7
grade 0 events	1002	1052	959	883	944
	5%	5%	4%	4%	4%
grade 1 events	14	8	15	12	32
	0%	0%	0%	0%	0%
grade 2 events	539	552	469	394	2119
	3%	3%	2%	1%	9%
grade 3 events	244	258	241	223	941
	1%	1%	1%	1%	4%
grade 4 events	223	231	248	220	930
	1%	1%	1%	1%	4%
grade 5 events	707	770	651	810	2305
	4%	4%	3%	3%	10%
grade 6 events	375	436	368	410	5374
	2%	2%	1%	1%	24%
grade 7 events	14513	15021	18502	18383	9526
	82%	81%	86%	86%	42%

2.2 Compared Parameters

Parameter	Planned	Actual	Parameter	Planned	Actual
Instrument	ACIS	ACIS	Obspar format version number	7	7
Detector	ACIS-01237	ACIS-01237	Obspar file type	PREDICTED	ACTUAL
Grating	NONE	NONE	Obspar update status	NONE	UPDATED
Data mode	VFAINT	VFAINT	CCD I0 on	Y	Y
Observation mode	POINTING	POINTING	CCD I1 on	Y	Y
[deg] Pointing RA	266.166983	266.1562538621988	CCD I2 on	Y	Y
[deg] Pointing Dec	-26.820370	-26.79447747719822	CCD I3 on	Y	Y
[deg] Pointing Roll	80.004320	80.20804515960567	CCD S0 on	N	N
[mm] SIM focus pos	-0.782348	-0.7809083437167272	CCD S1 on	N	N
[mm] SIM defocus	0	0.001439871863259334	CCD S2 on	N	N
[mm] SIM translation stage pos	-233.592463	-233.5874344608287	CCD S3 on	O1	Y
[mm] SIM translation stage offset	0	-0.005018542100998502	CCD S4 on	N	N
[s] Observation start time (MET)	327362113.184000	327361737.85276	CCD S5 on	N	N
Observation start date	2008-05-16T21:54:08	2008-05-16T21:48:57	Number of optional ACIS chips dropped	0	0
[s] Observation end time (MET)	327364113.184000	327364247.05288	On-chip summing requested	N	N
Observation end date	2008-05-16T22:27:28	2008-05-16T22:30:47	Subarray requested	NONE	NONE
Read mode	TIMED	TIMED	Alternating exposures requested	N	N
			[s] Primary exposure time	0.000000	3.1

2.3 Aspect



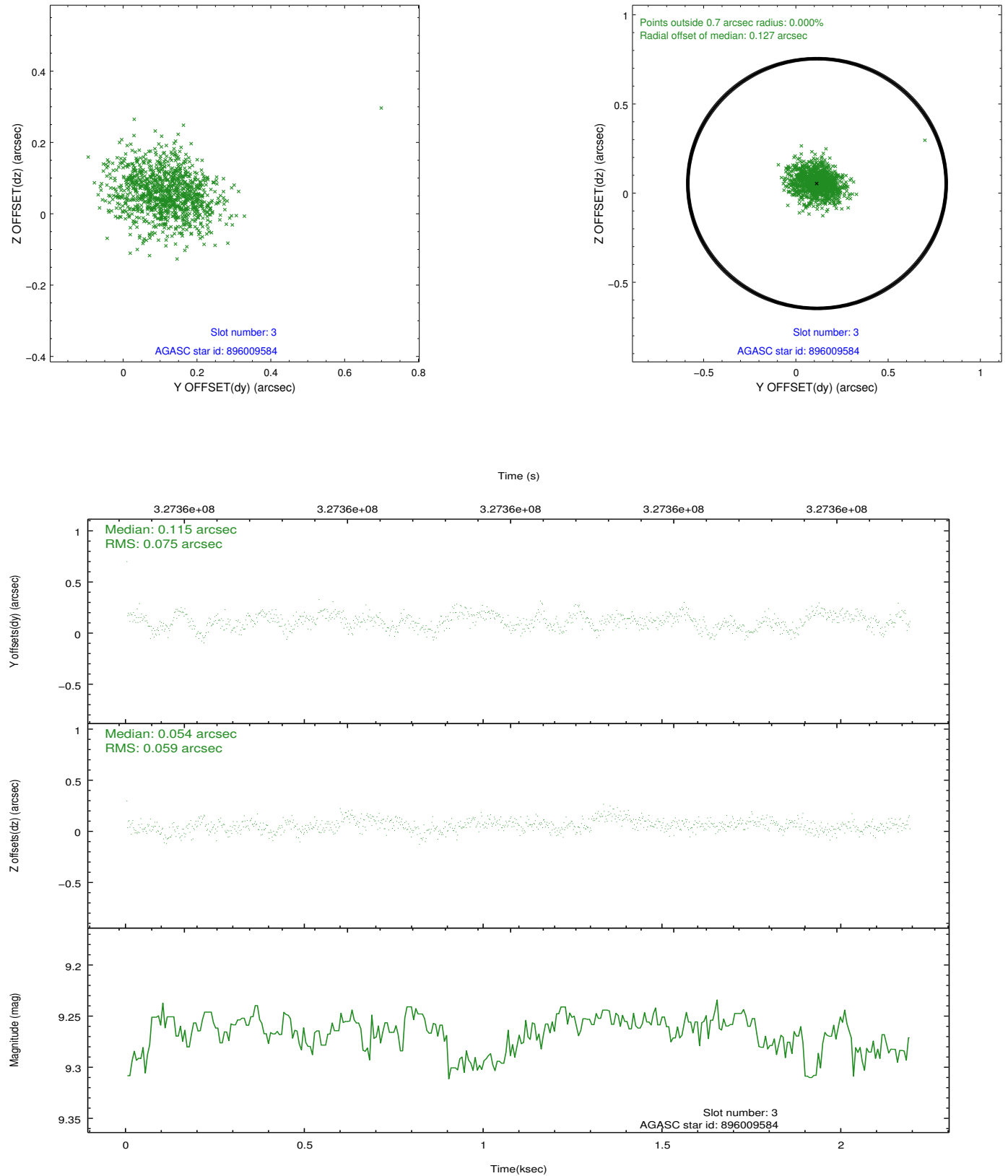


Slot Statistics

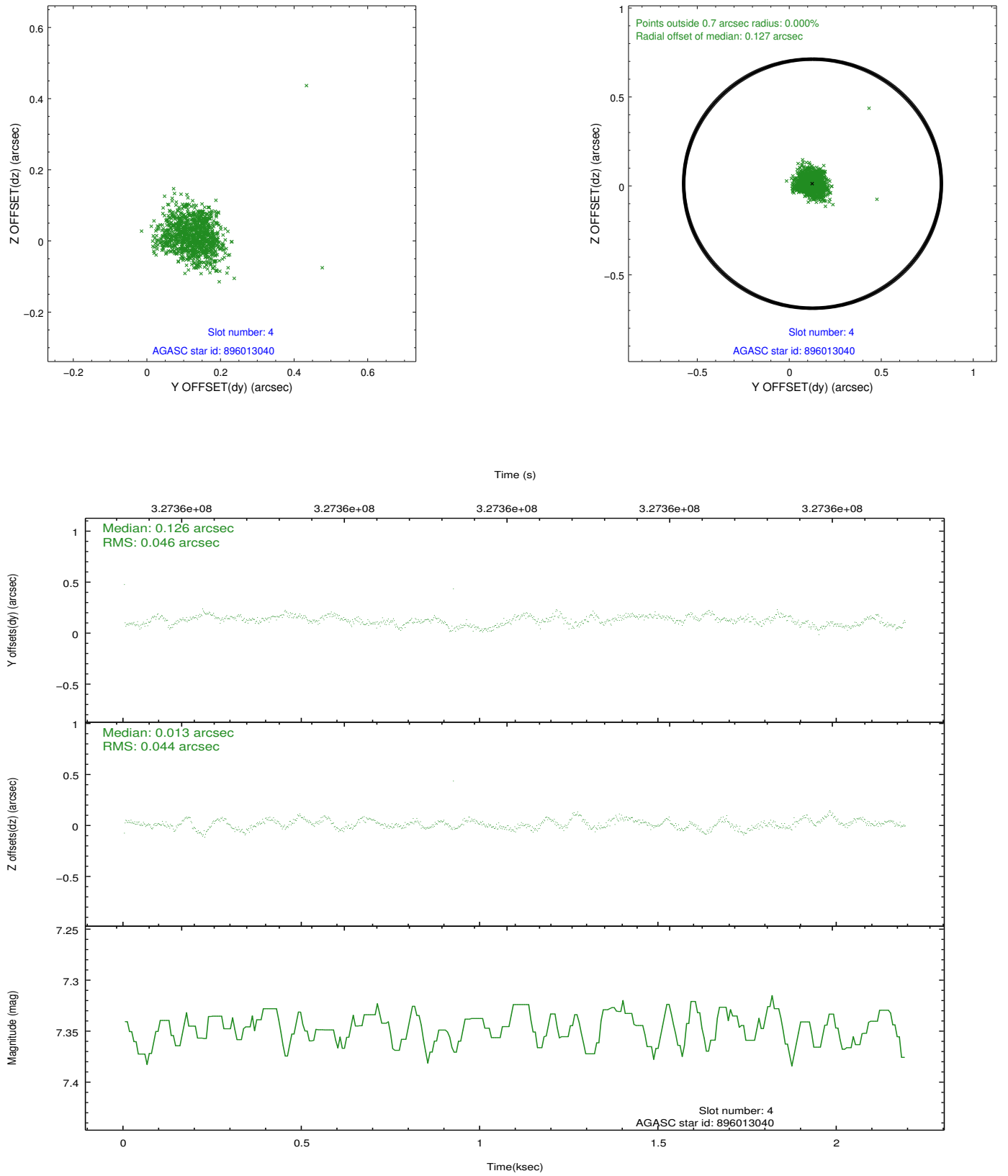
slot	status	id	mag	n_pts	med_dy	med_dz	dr1	dr2	ra	dec	mean_y	mean_z
0	FID	ACIS-I-1	7.06	535	0.011	0.036	0.005	0.010	0.000000	0.000000	926.99	-837.20
1	FID	ACIS-I-5	7.05	535	-0.169	0.034	0.006	0.010	0.000000	0.000000	-1819.66	1058.77
2	FID	ACIS-I-6	7.06	535	0.068	0.001	0.006	0.010	0.000000	0.000000	389.34	1706.63
3	GUIDE	896009584	9.26	1069	0.115	0.054	0.101	0.161	266.891313	-26.347528	2075.71	-2006.71
4	GUIDE	896013040	7.35	1069	0.126	0.013	0.065	0.101	266.506589	-26.972299	-348.90	-1170.07
5	GUIDE	896014528	7.68	1069	0.054	0.135	0.050	0.082	266.628858	-27.438607	-1938.65	-1841.22
6	GUIDE	896015112	9.17	1068	-0.108	0.057	0.107	0.164	266.684847	-26.286161	2178.87	-1314.42
7	GUIDE	896015880	8.50	1068	-0.179	-0.262	0.068	0.112	265.986633	-26.306686	1721.46	892.84

2.4 Star Slots

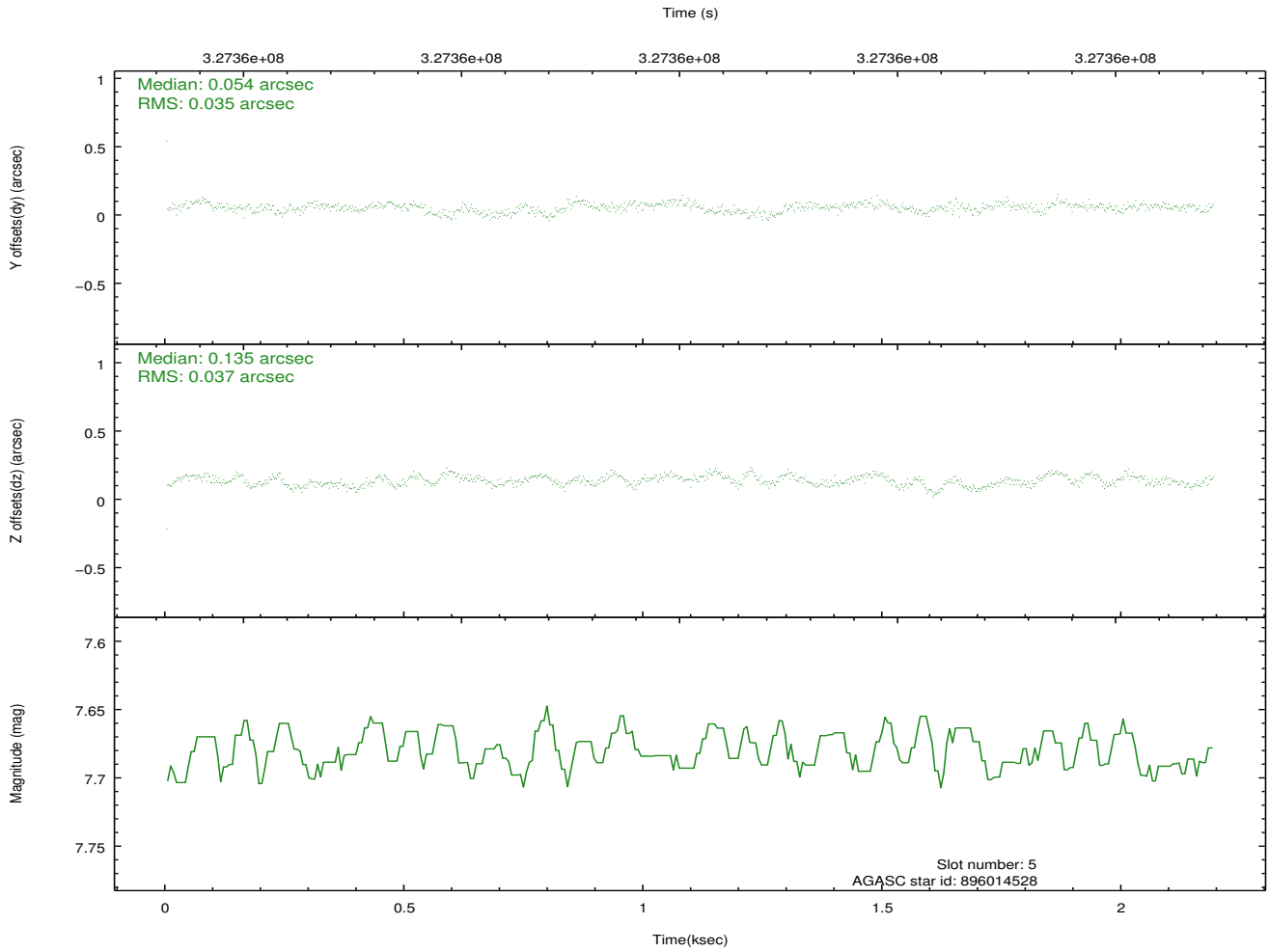
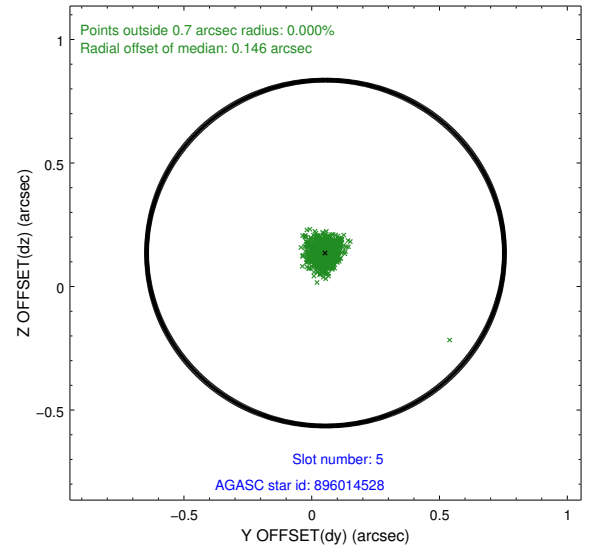
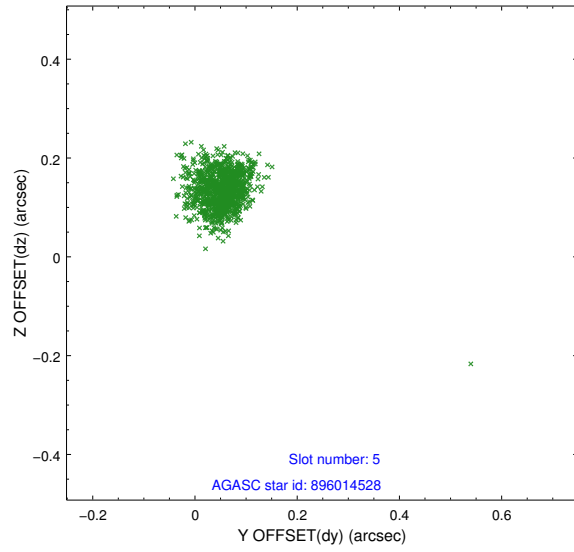
2.4.1 Slot 3



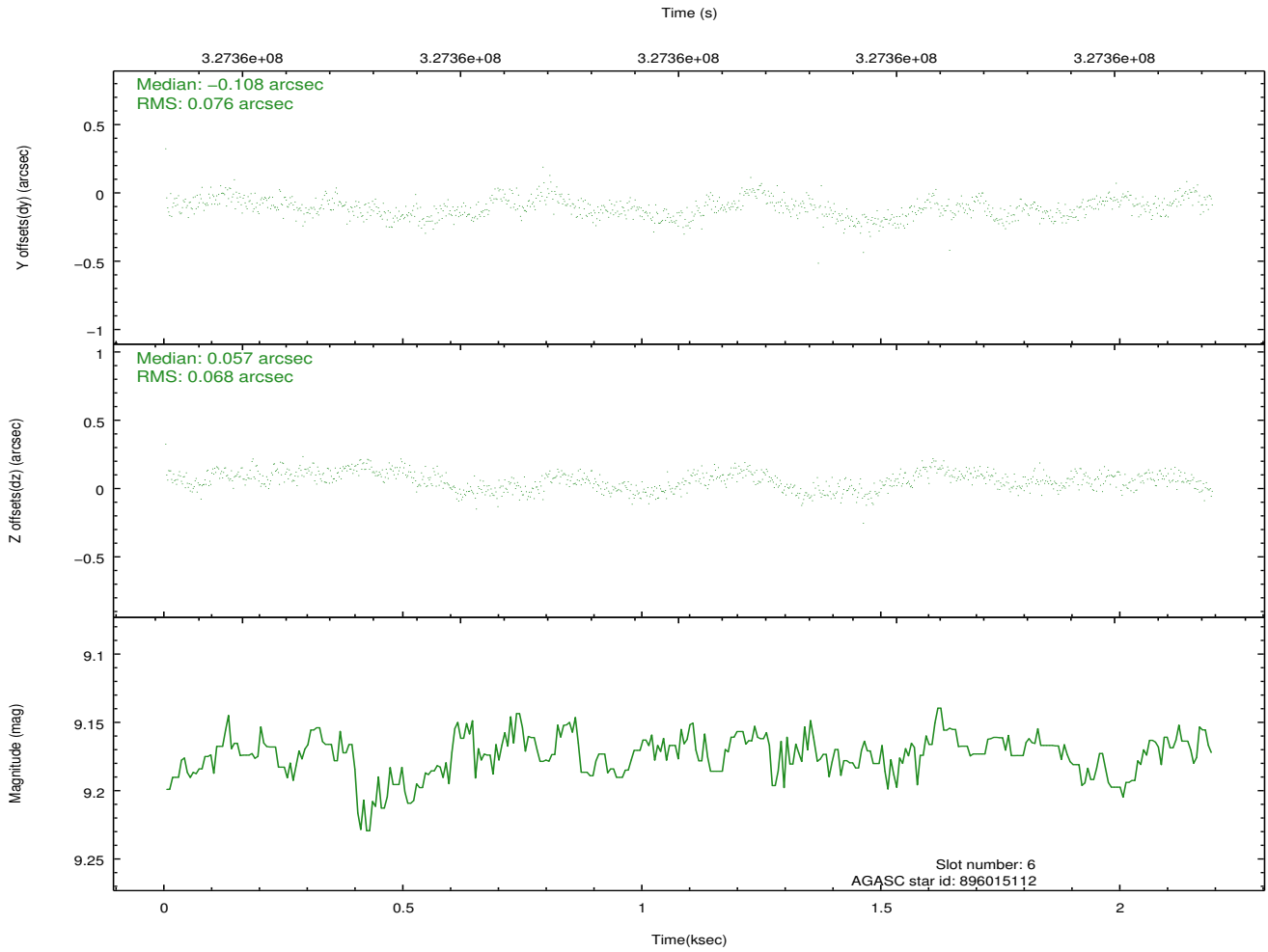
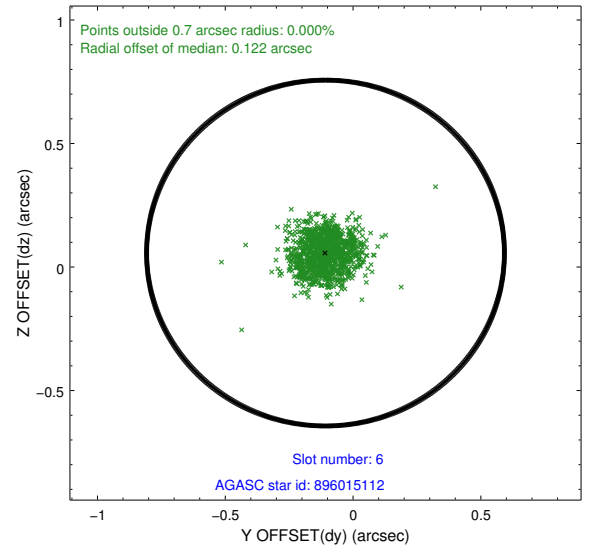
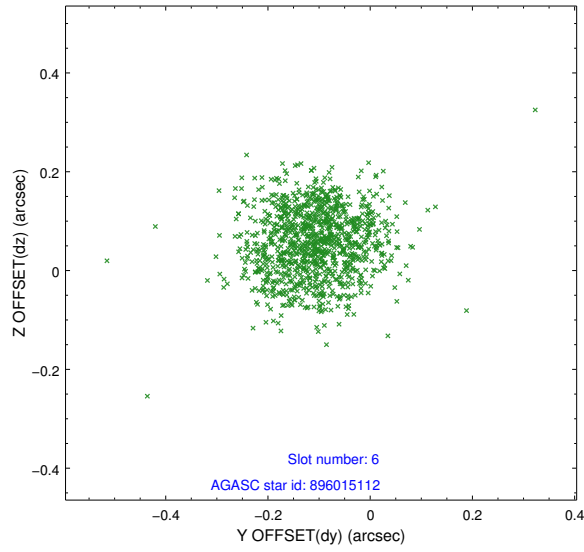
2.4.2 Slot 4



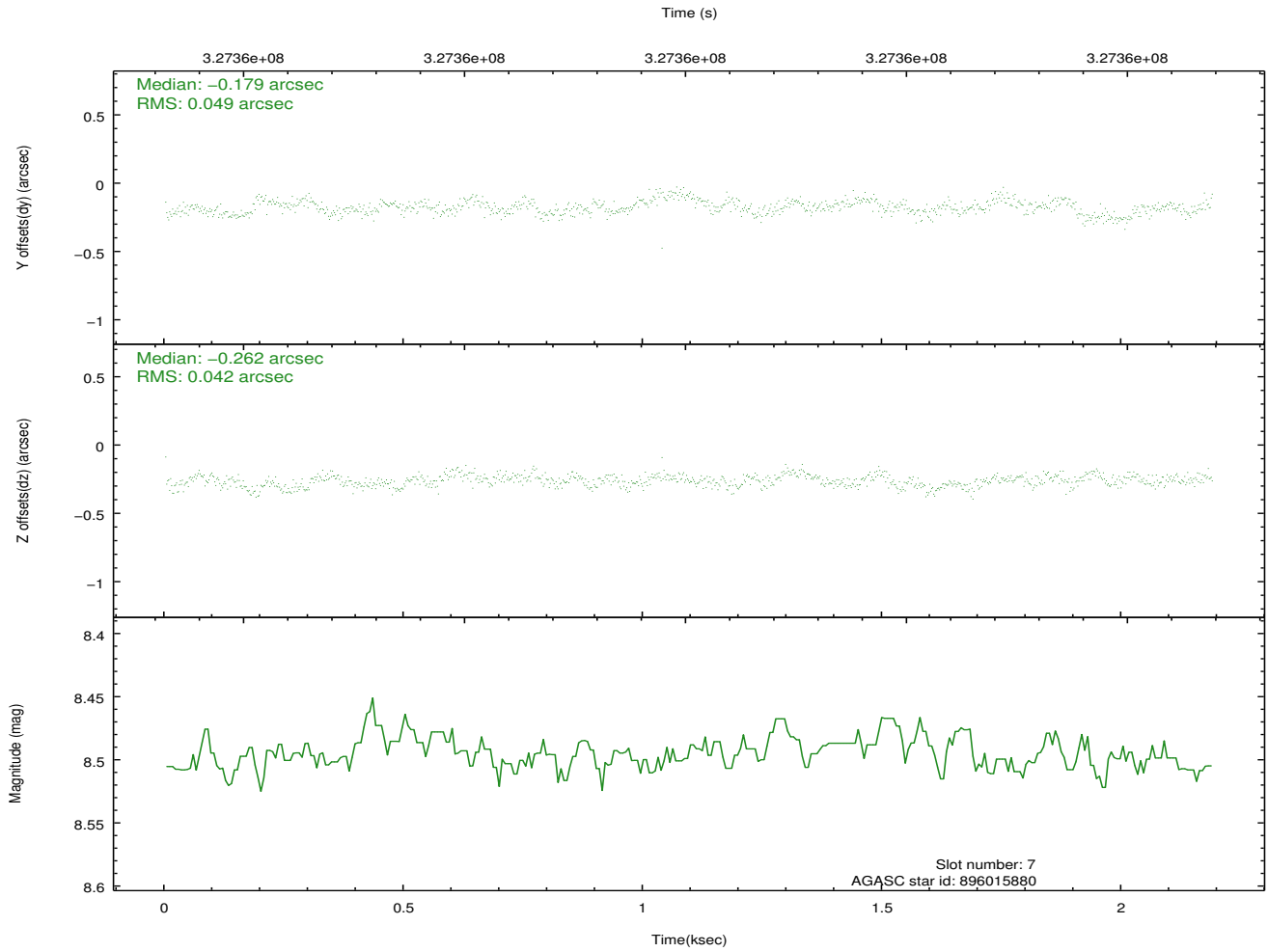
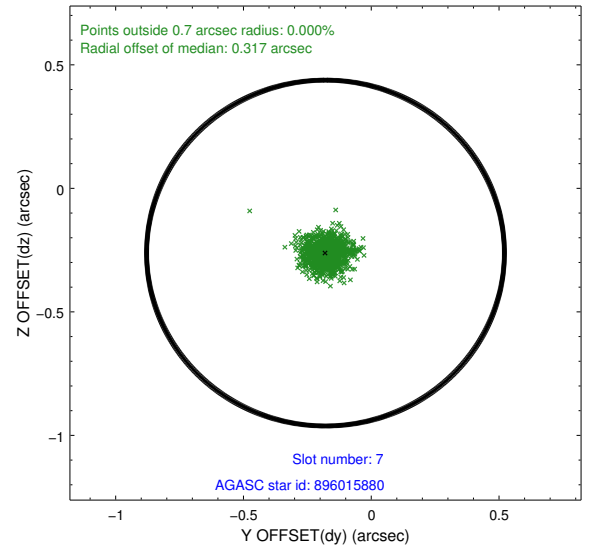
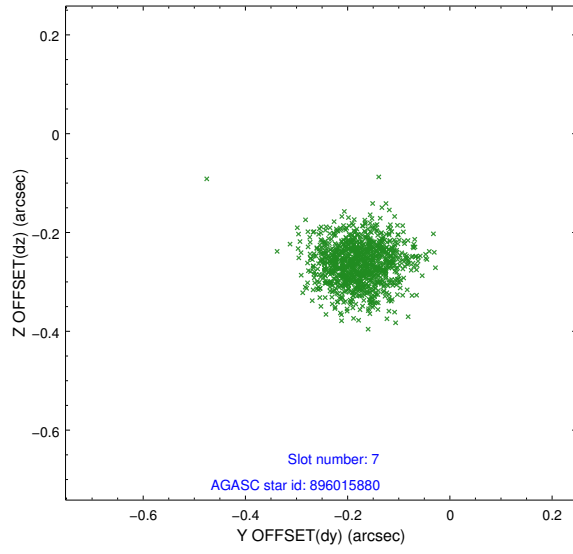
2.4.3 Slot 5



2.4.4 Slot 6

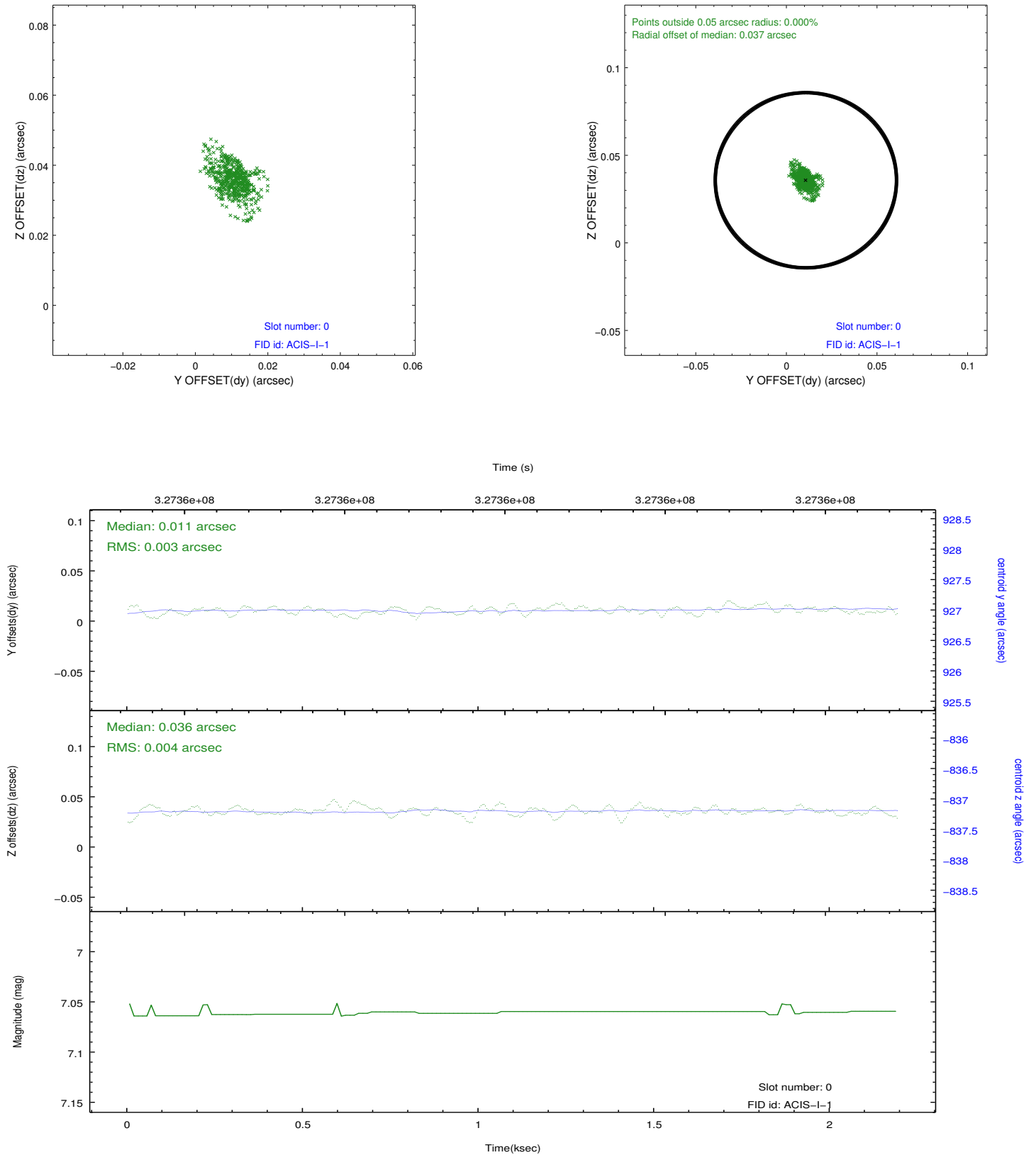


2.4.5 Slot 7

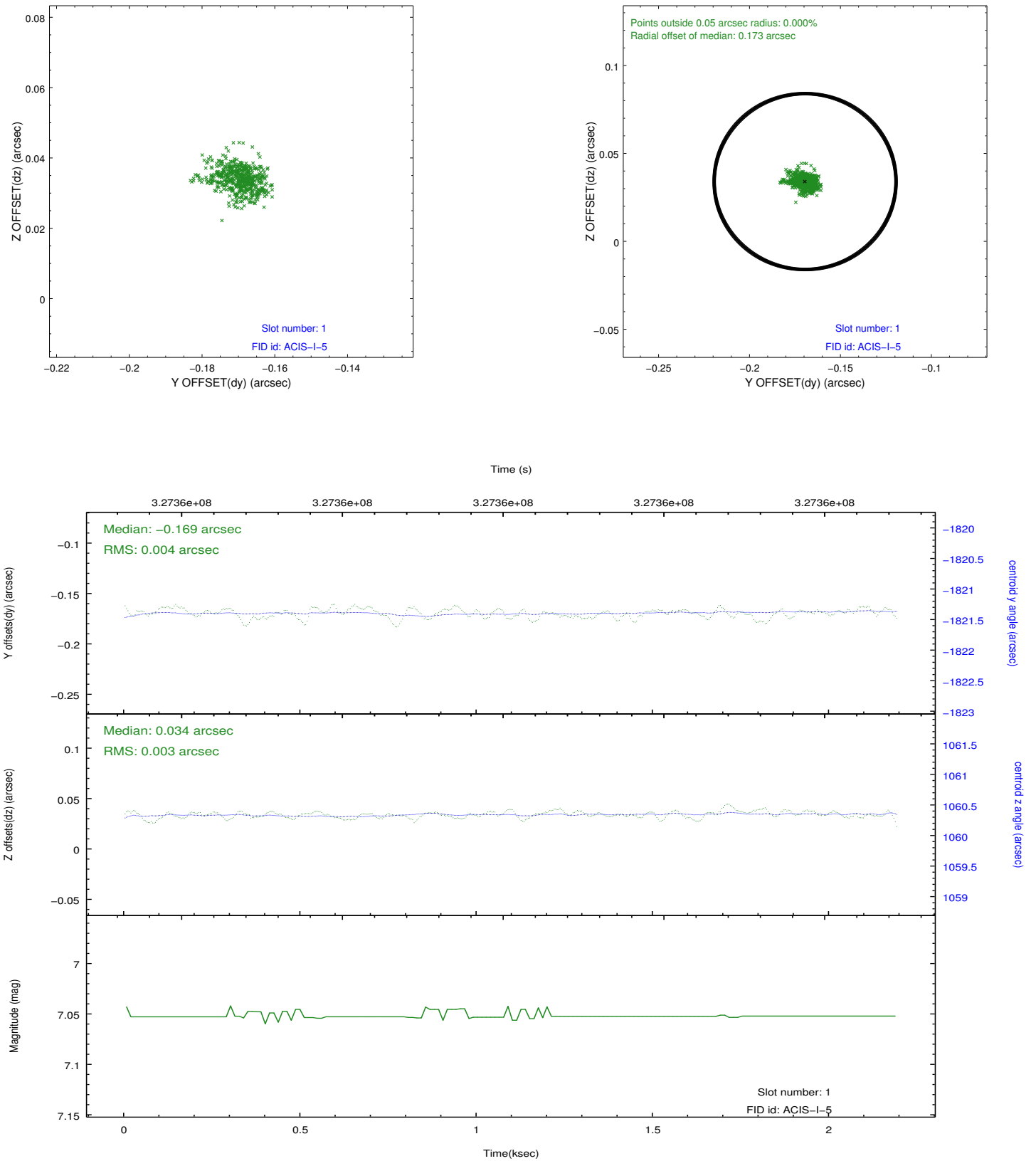


2.5 FID Slots

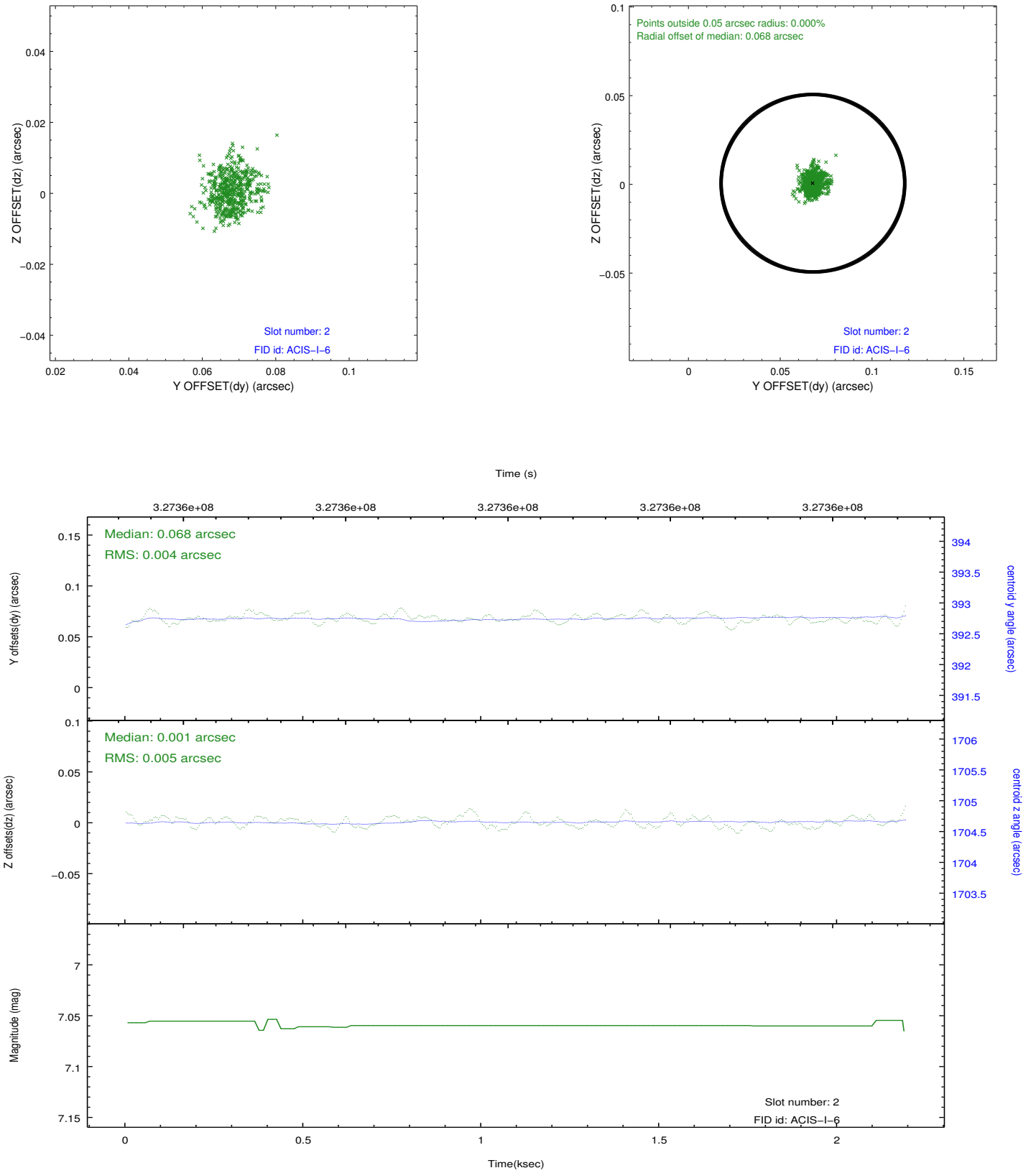
2.5.1 Slot 0



2.5.2 Slot 1



2.5.3 Slot 2



A Summary

A.1 Status

V&V Scientist	Beth Sundheim
V&V Date (YYYY-MM-DD)	2012.05.18
V&V Edition	1
V&V Disposition and Status	OK
V&V Charge Time	2.18860001

A.2 Comments