

V&V Reference Report

L2 ASCDS Version : 8.4.4

Observation 8964 - L2 Version 2
Chandra X-Ray Center

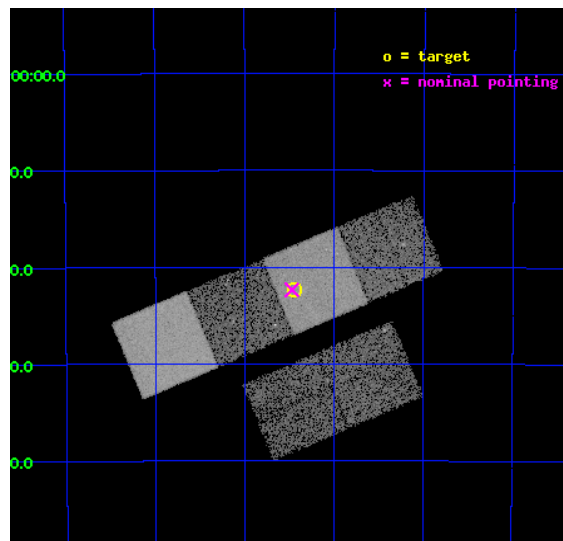
L2 Processing Date : May 13 2012

Contents

1	Front	2
2	OBI	3
2.1	OBI	3
2.1.1	Images	3
2.1.2	Bias	3
2.1.3	Parameters	4
2.1.4	Events	4
2.2	Compared Parameters	5
2.3	Aspect	6
2.4	Star Slots	9
2.4.1	Slot 3	9
2.4.2	Slot 4	10
2.4.3	Slot 5	11
2.4.4	Slot 6	12
2.4.5	Slot 7	13
2.5	FID Slots	14
2.5.1	Slot 0	14
2.5.2	Slot 1	15
2.5.3	Slot 2	16
A	Summary	17
A.1	Status	17
A.2	Comments	17

1 Front

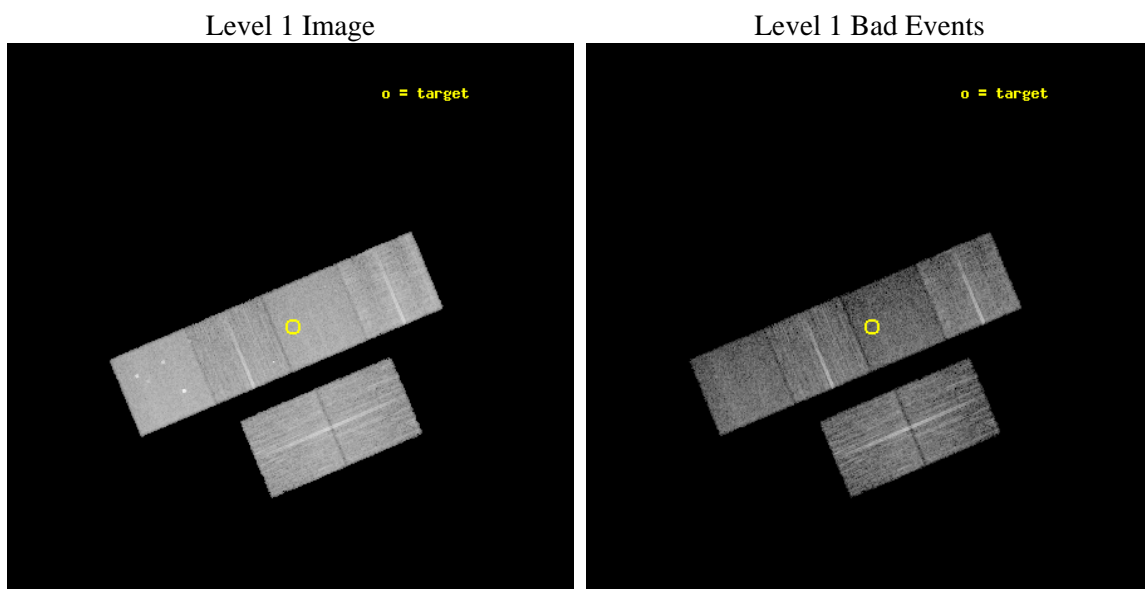
seq_num	300220	Sequence number
obs_id	8964	Observation id
title	A Chandra Legacy Survey of Dynamically Active Globular Clusters	Pr
observer	Prof. David Pooley	Principal investigator
object	NGC 5286	Source name
dtcycle	0	
cycle	P	events from which exps? Prim/Second/Both
ra_targ	206.610417	Observer's specified target RA [deg]
dec_targ	-51.373333	Observer's specified target Dec [deg]
ra_nom	206.6180284854	Nominal RA [deg]
dec_nom	-51.372564640045	Nominal Dec [deg]
roll_nom	337.16257763602	Nominal Roll [deg]
revision	2	Processing version of data
ontime	10143.650904298	Sum of GTIs [s]
livetime	10015.205888774	Livetime [s]
ontime2	10143.691944301	Sum of GTIs [s]
ontime3	10143.527784288	Sum of GTIs [s]
ontime5	10143.609864295	Sum of GTIs [s]
ontime6	10143.568824291	Sum of GTIs [s]
ontime7	10143.650904298	Sum of GTIs [s]
ontime8	10143.486744285	Sum of GTIs [s]
l2events	119548	Number of level 2 events



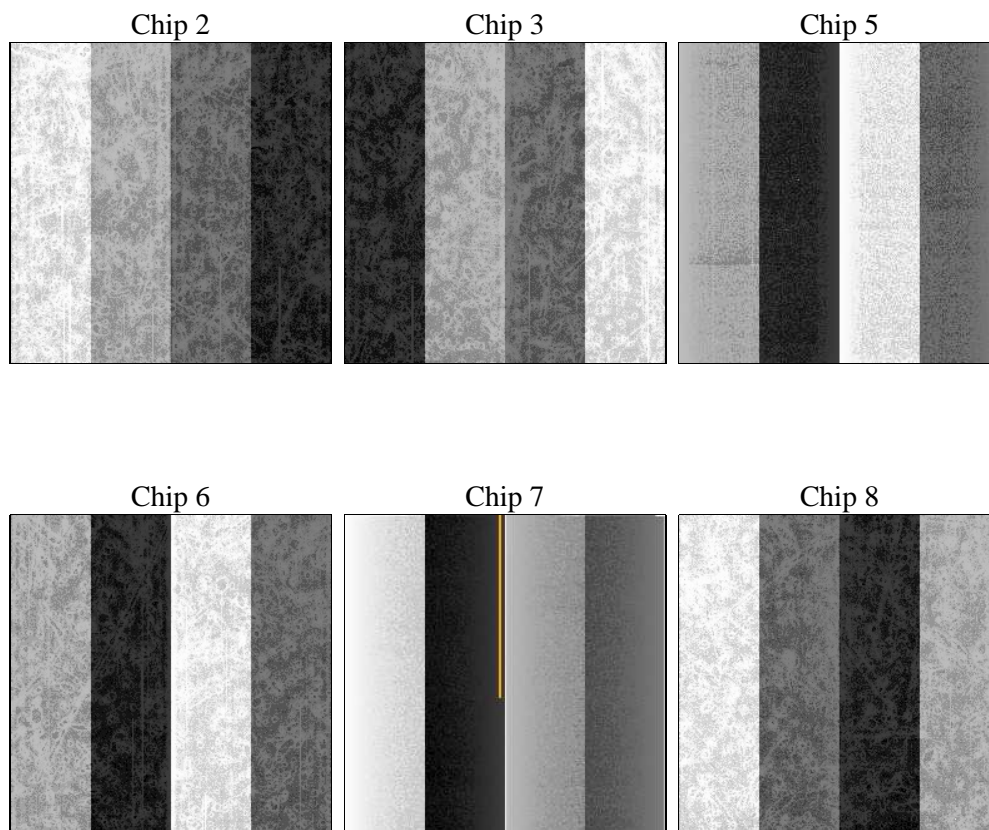
2 OBI

2.1 OBI

2.1.1 Images



2.1.2 Bias



2.1.3 Parameters

obi_num	0	Obi number	sched_exp_time	10100.000000	[s] Scheduled observation exposure time
ascdsver	8.4.4	Processing system revision	ontime	10143.650904298	Sum of GTIs [s]
caldbver	4.4.9	 	ontime2	10143.691944301	Sum of GTIs [s]
date	2012-05-14T00:46:43	Date and time of file creation	ontime3	10143.527784288	Sum of GTIs [s]
revision	2	Processing version of data	ontime5	10143.609864295	Sum of GTIs [s]
			ontime6	10143.568824291	Sum of GTIs [s]
			ontime7	10143.650904298	Sum of GTIs [s]
			ontime8	10143.486744285	Sum of GTIs [s]
			l1events	533725	Number of level 1 events

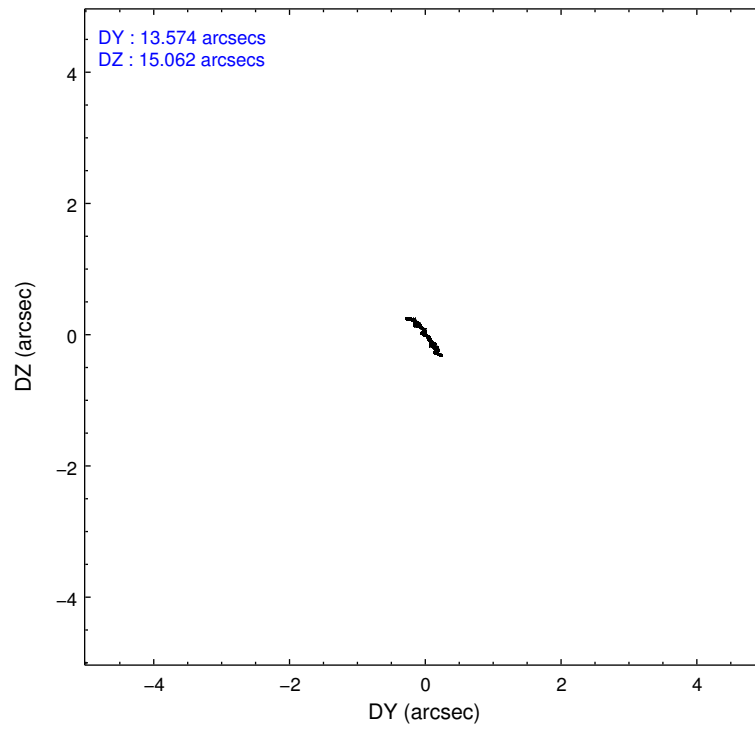
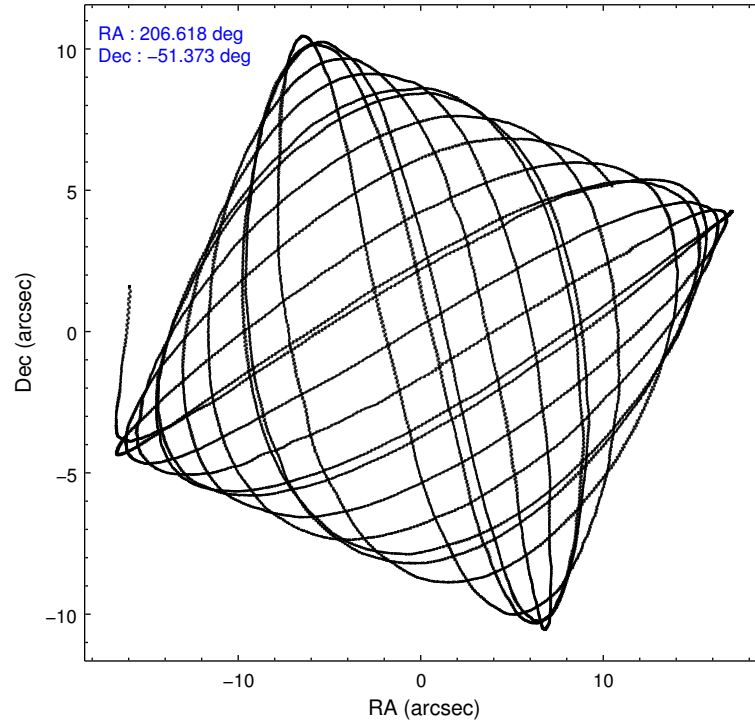
2.1.4 Events

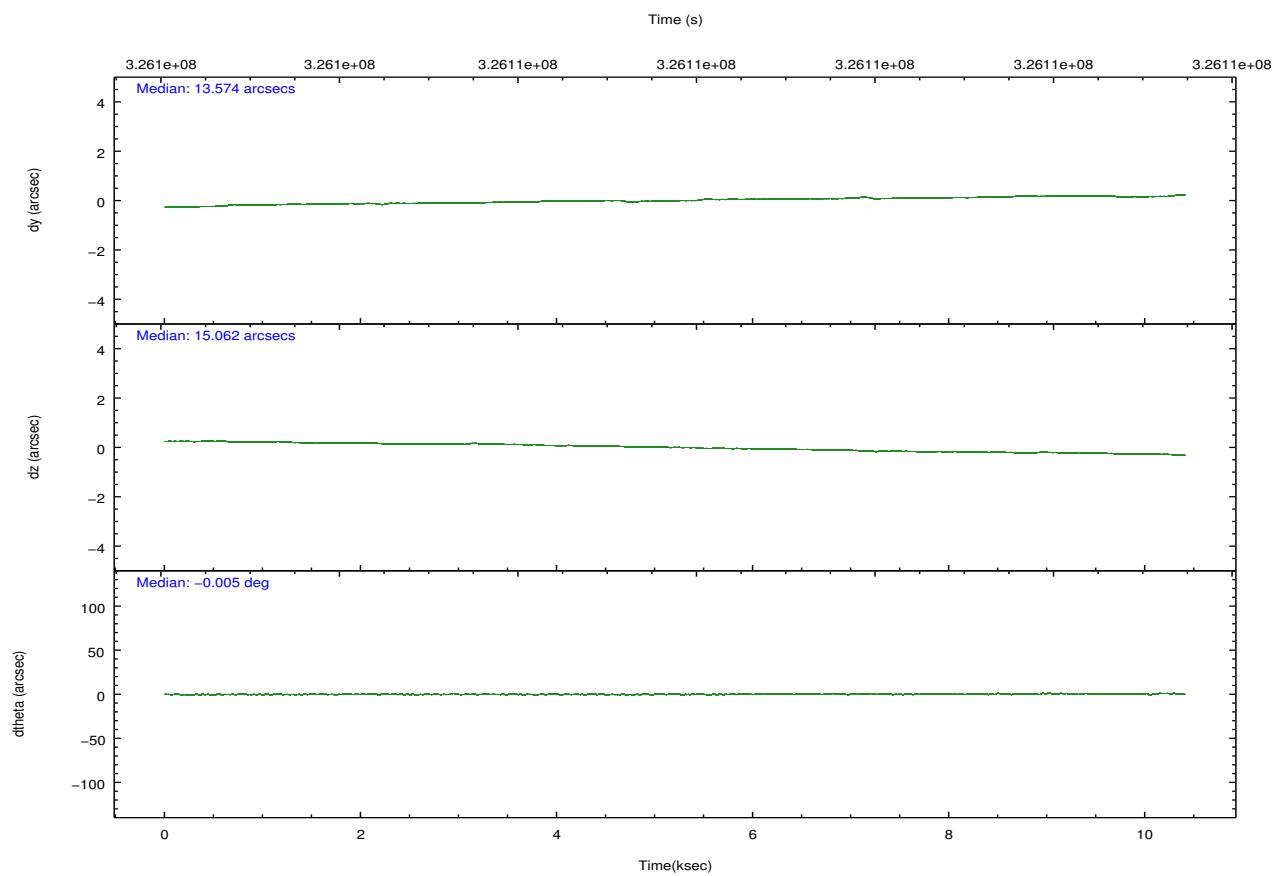
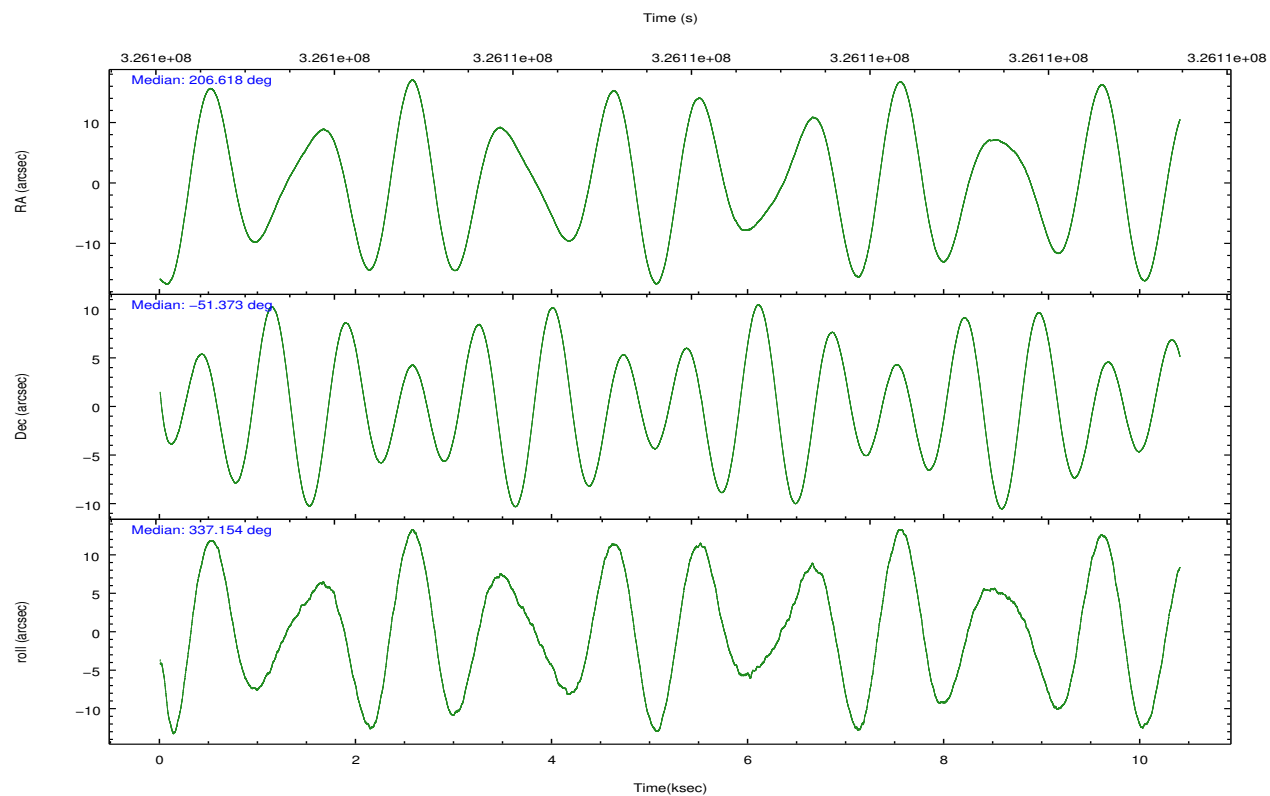
	ccd 2	ccd 3	ccd 5	ccd 6	ccd 7	ccd 8		ccd 2	ccd 3	ccd 5	ccd 6	ccd 7	ccd 8
level 1 events	84710	73643	110256	78378	87222	99516	grade 0 events	2809	2814	6794	3423	4009	7337
rejected events	76946	66078	54519	69586	46613	74775		3%	3%	6%	4%	4%	7%
rejected %	90%	89%	49%	88%	53%	75%	grade 1 events	49	29	207	43	109	81
								0%	0%	0%	0%	0%	0%
							grade 2 events	1862	1620	16478	1885	8228	5565
								2%	2%	14%	2%	9%	5%
							grade 3 events	810	847	2308	904	3838	2782
								0%	1%	2%	1%	4%	2%
							grade 4 events	807	840	2152	899	3798	2561
								0%	1%	1%	1%	4%	2%
							grade 5 events	2571	3081	8665	3122	9209	4736
								3%	4%	7%	3%	10%	4%
							grade 6 events	1479	1448	28021	1686	20752	6504
								1%	1%	25%	2%	23%	6%
							grade 7 events	74323	62964	45631	66416	37279	69950
								87%	85%	41%	84%	42%	70%

2.2 Compared Parameters

Parameter	Planned	Actual	Parameter	Planned	Actual
Instrument	ACIS	ACIS	Obspar format version number	7	7
Detector	ACIS-235678	ACIS-235678	Obspar file type	PREDICTED	ACTUAL
Grating	NONE	NONE	Obspar update status	NONE	UPDATED
Data mode	VFAINT	VFAINT	CCD I0 on	N	N
Observation mode	POINTING	POINTING	CCD I1 on	N	N
[deg] Pointing RA	206.574708	206.6180284853956	CCD I2 on	O1	Y
[deg] Pointing Dec	-51.376364	-51.37256464004545	CCD I3 on	O2	Y
[deg] Pointing Roll	336.972097	337.1625776360202	CCD S0 on	N	N
[mm] SIM focus pos	-0.684267	-0.6828225247311905	CCD S1 on	Y	Y
[mm] SIM defocus	0	0.001444936568705701	CCD S2 on	Y	Y
[mm] SIM translation stage pos	-190.132523	-190.1400660498719	CCD S3 on	Y	Y
[mm] SIM translation stage offset	0	0.00754346686406393	CCD S4 on	Y	Y
[s] Observation start time (MET)	326102870.184000	326101804.20386	CCD S5 on	N	N
Observation start date	2008-05-02T08:06:45	2008-05-02T07:50:04	Number of optional ACIS chips dropped	0	0
[s] Observation end time (MET)	326112970.184000	326114448.09198	On-chip summing requested	N	N
Observation end date	2008-05-02T10:55:05	2008-05-02T11:20:48	Subarray requested	NONE	NONE
Read mode	TIMED	TIMED	Alternating exposures requested	N	N
			[s] Primary exposure time	0.000000	3.2

2.3 Aspect



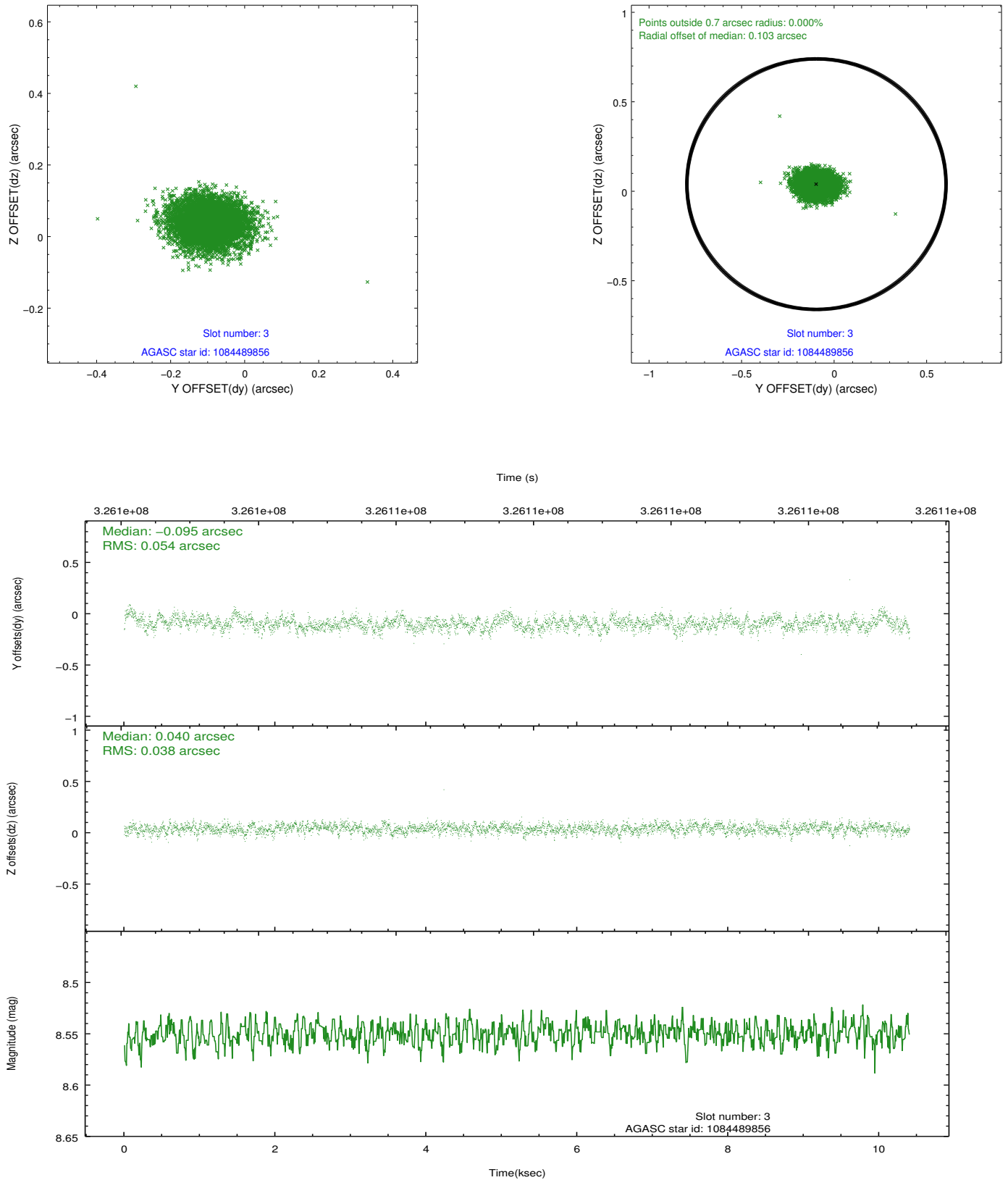


Slot Statistics

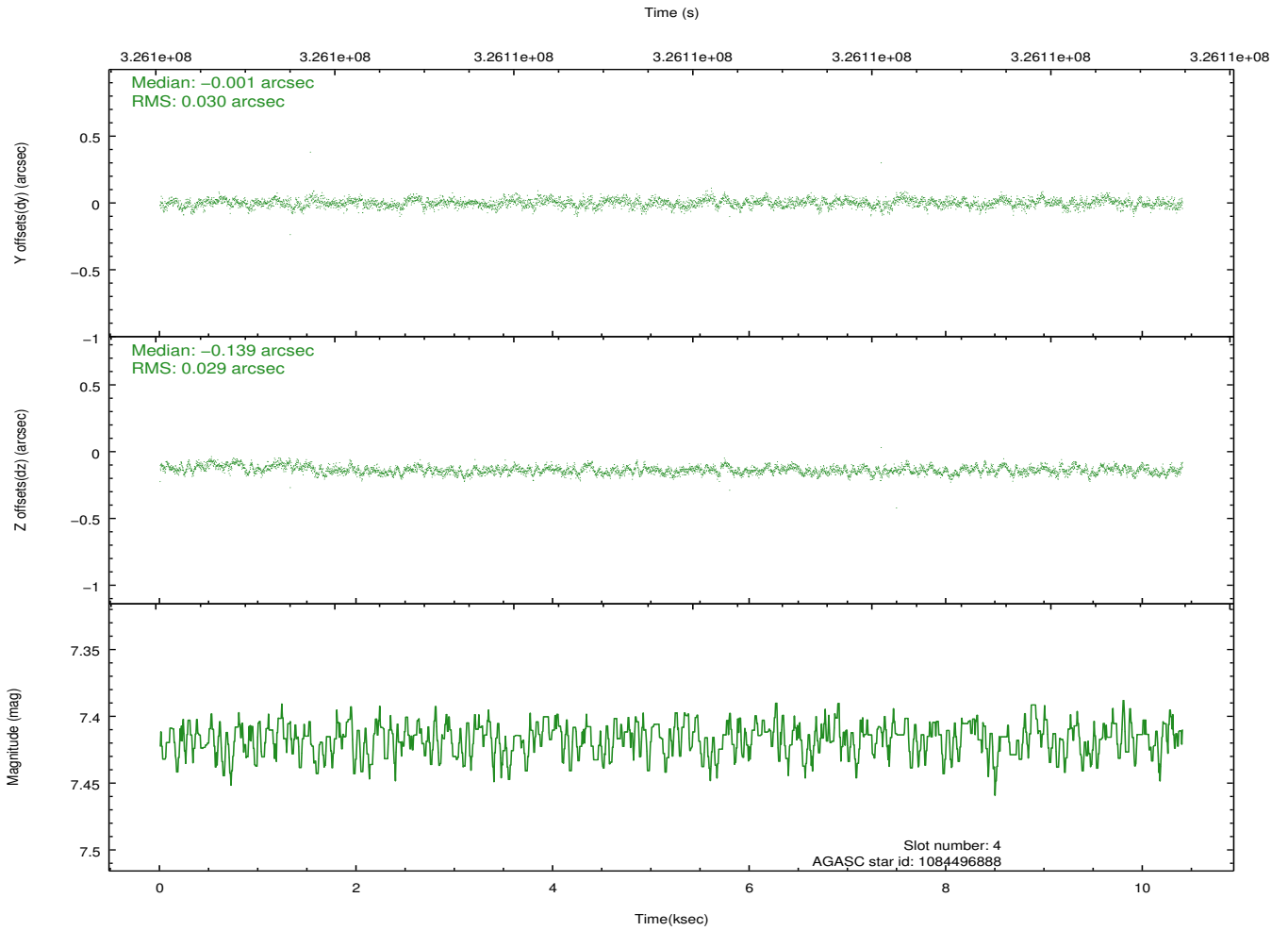
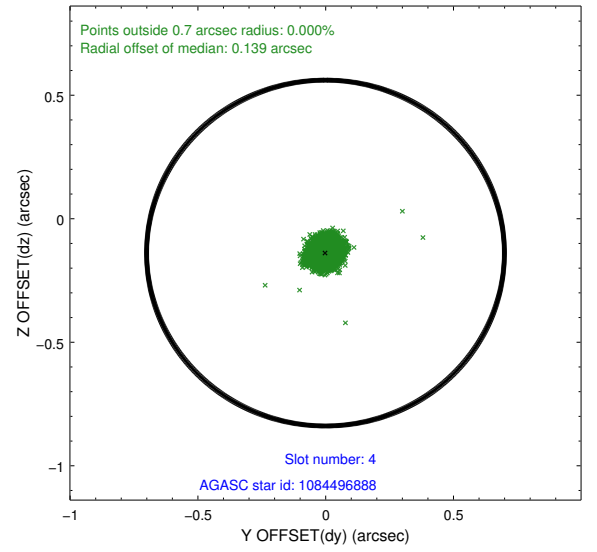
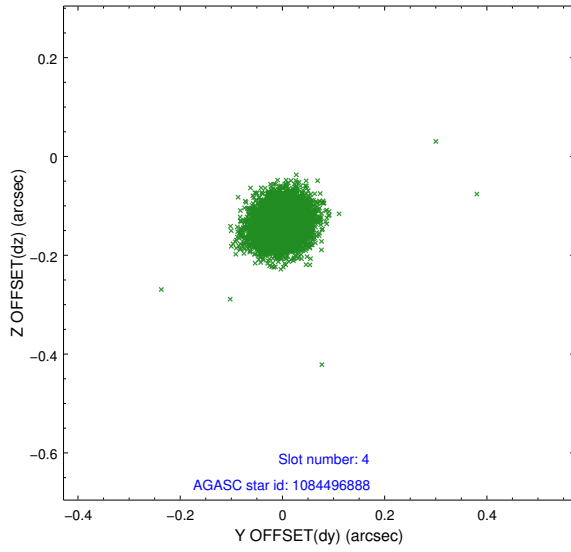
slot	status	id	mag	n_pts	med_dy	med_dz	dr1	dr2	ra	dec	mean_y	mean_z
0	FID	ACIS-S-2	6.86	2538	-0.046	0.012	0.008	0.014	0.000000	0.000000	-766.53	-1736.43
1	FID	ACIS-S-4	6.94	2538	0.119	0.019	0.008	0.015	0.000000	0.000000	2146.66	171.57
2	FID	ACIS-S-5	6.97	2538	-0.104	-0.023	0.008	0.015	0.000000	0.000000	-1818.81	165.72
3	GUIDE	1084489856	8.55	5075	-0.095	0.040	0.070	0.115	207.250188	-51.916553	2144.80	-1208.97
4	GUIDE	1084496888	7.42	5076	-0.001	-0.139	0.044	0.072	206.537560	-50.879894	-776.15	1611.53
5	GUIDE	1084499456	8.27	5071	0.055	-0.001	0.067	0.104	205.935639	-51.626572	-960.12	-1394.35
6	GUIDE	1084500032	8.94	5072	0.014	0.153	0.099	0.152	205.599129	-51.653448	-1608.87	-1783.94
7	GUIDE	1084510152	6.95	5072	0.021	-0.058	0.072	0.129	206.066676	-51.012452	-1569.87	751.32

2.4 Star Slots

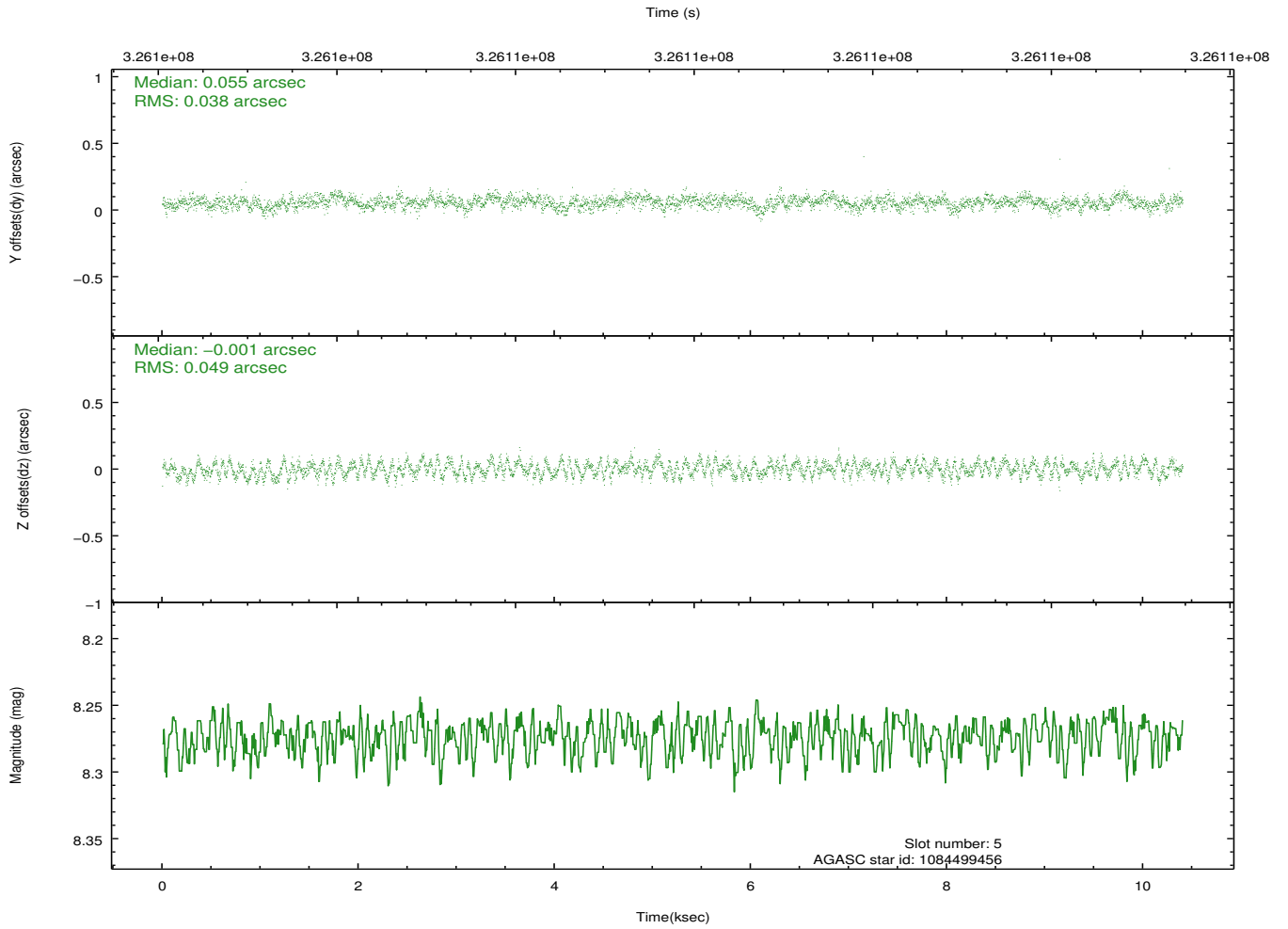
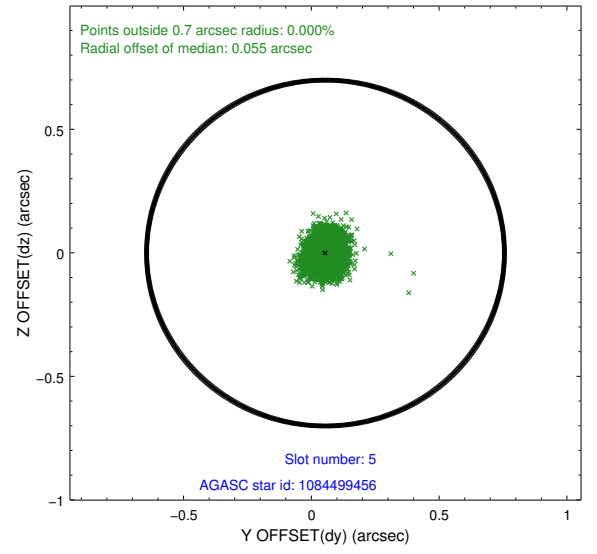
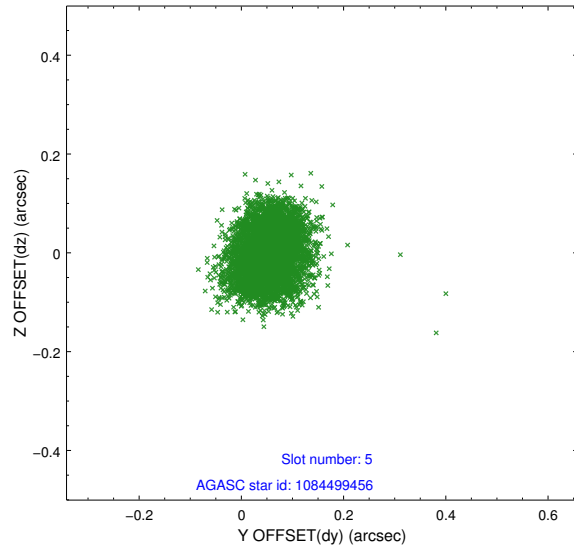
2.4.1 Slot 3



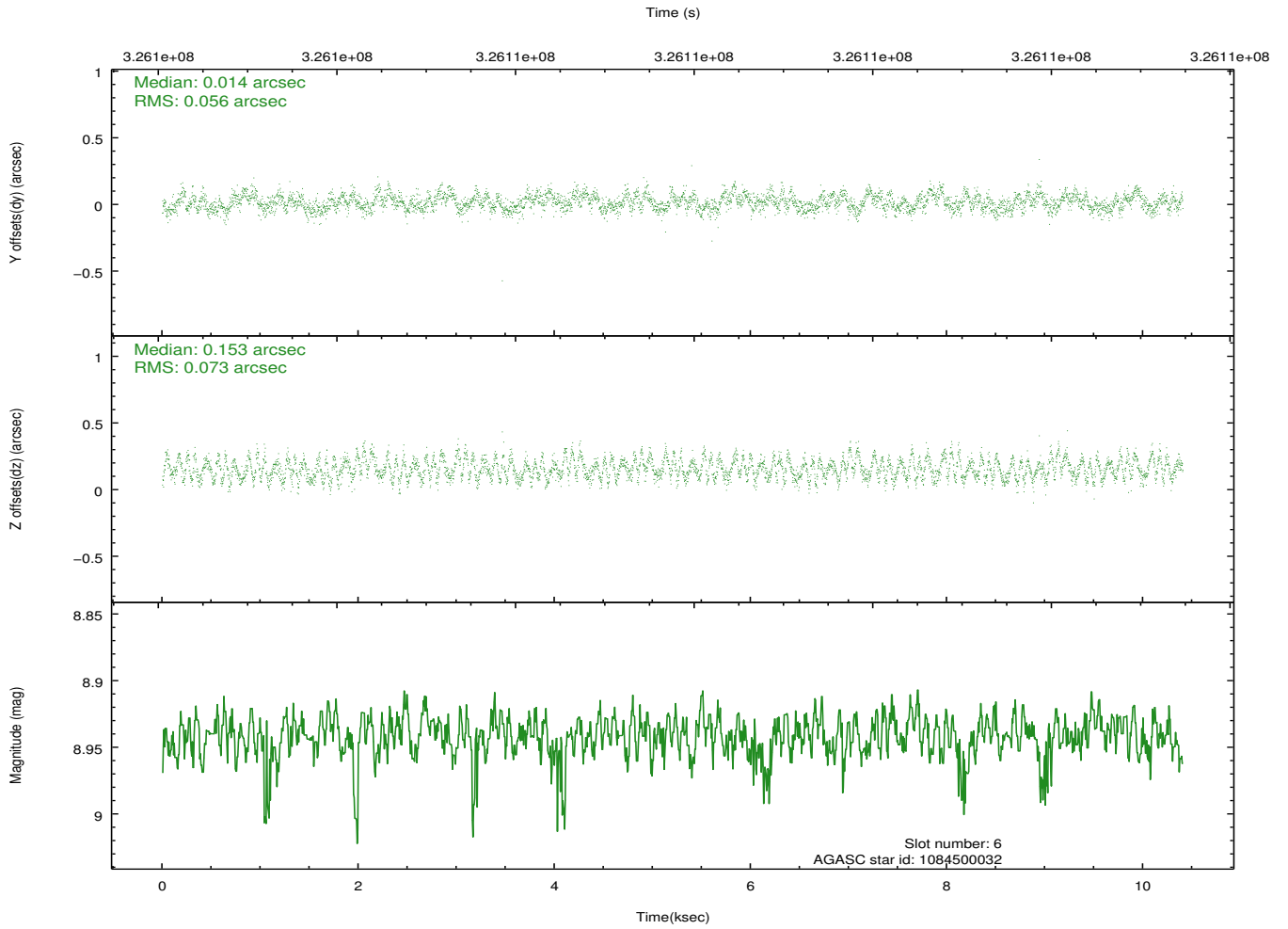
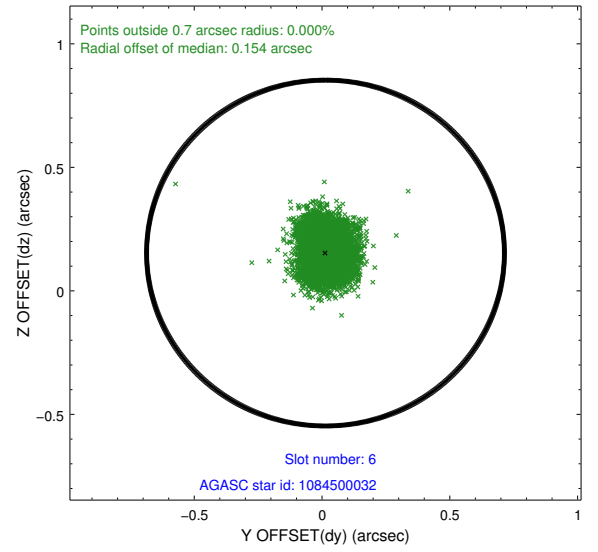
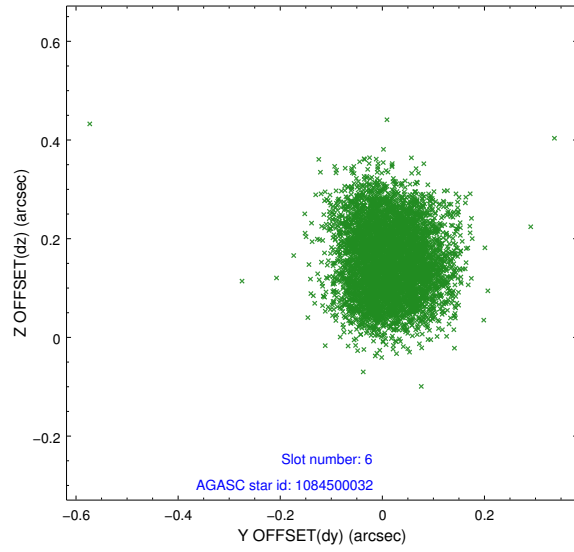
2.4.2 Slot 4



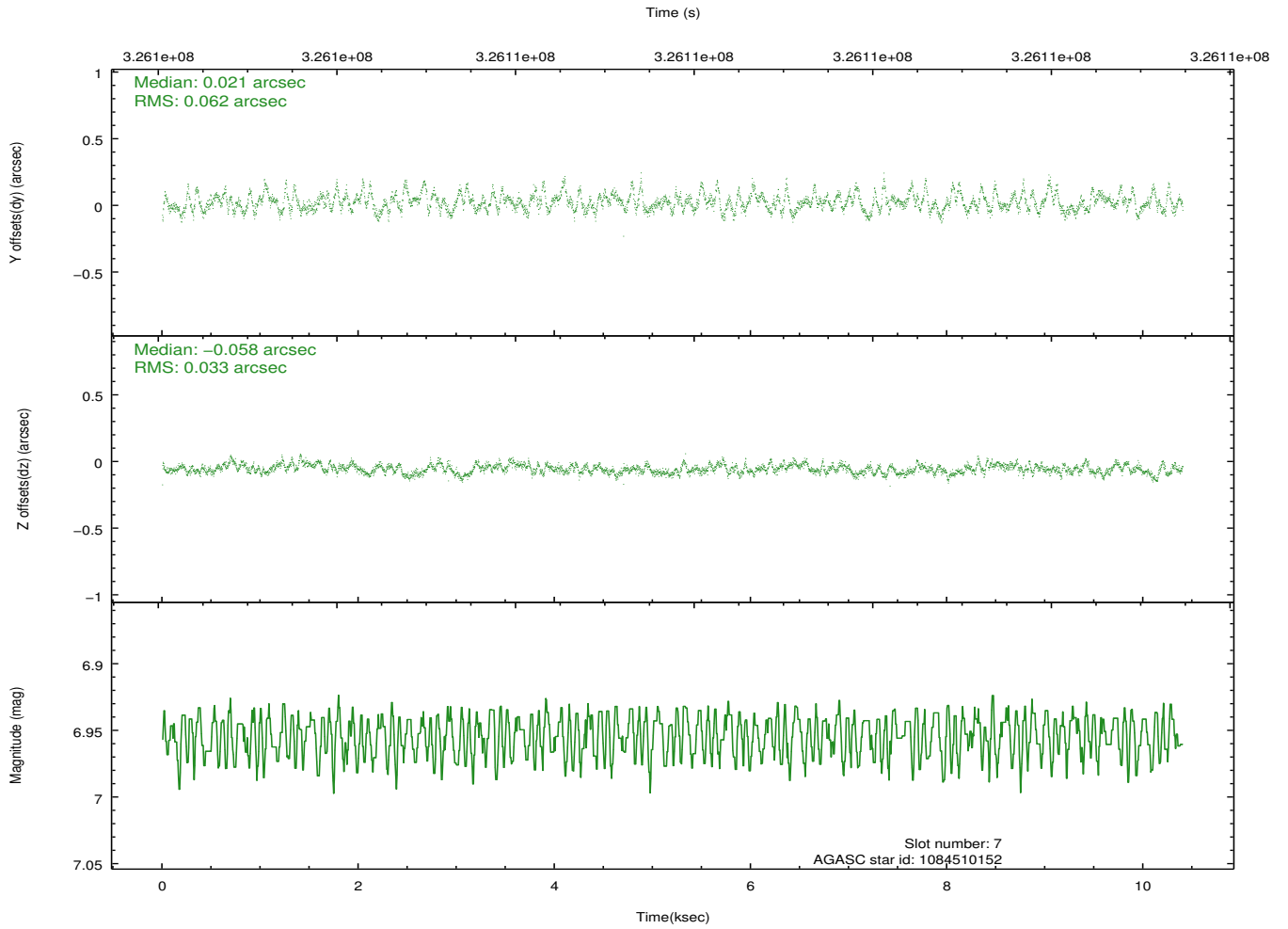
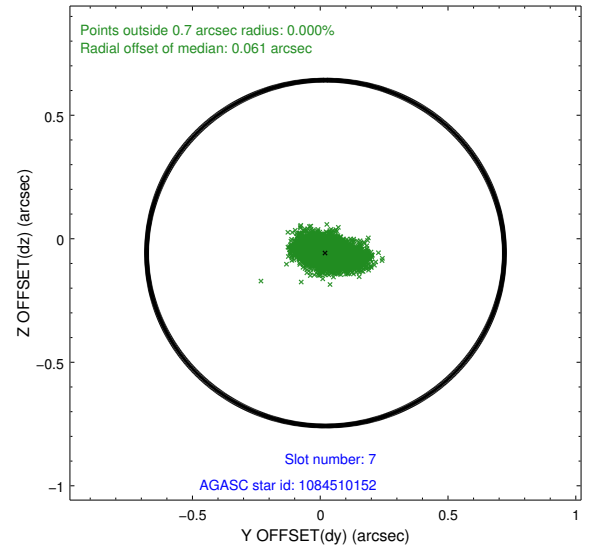
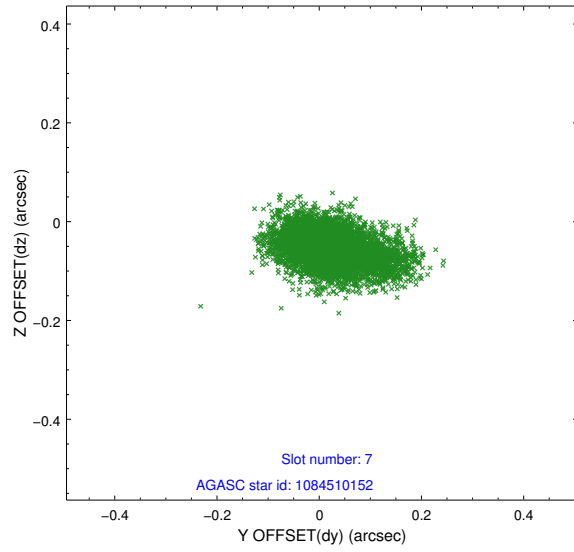
2.4.3 Slot 5



2.4.4 Slot 6

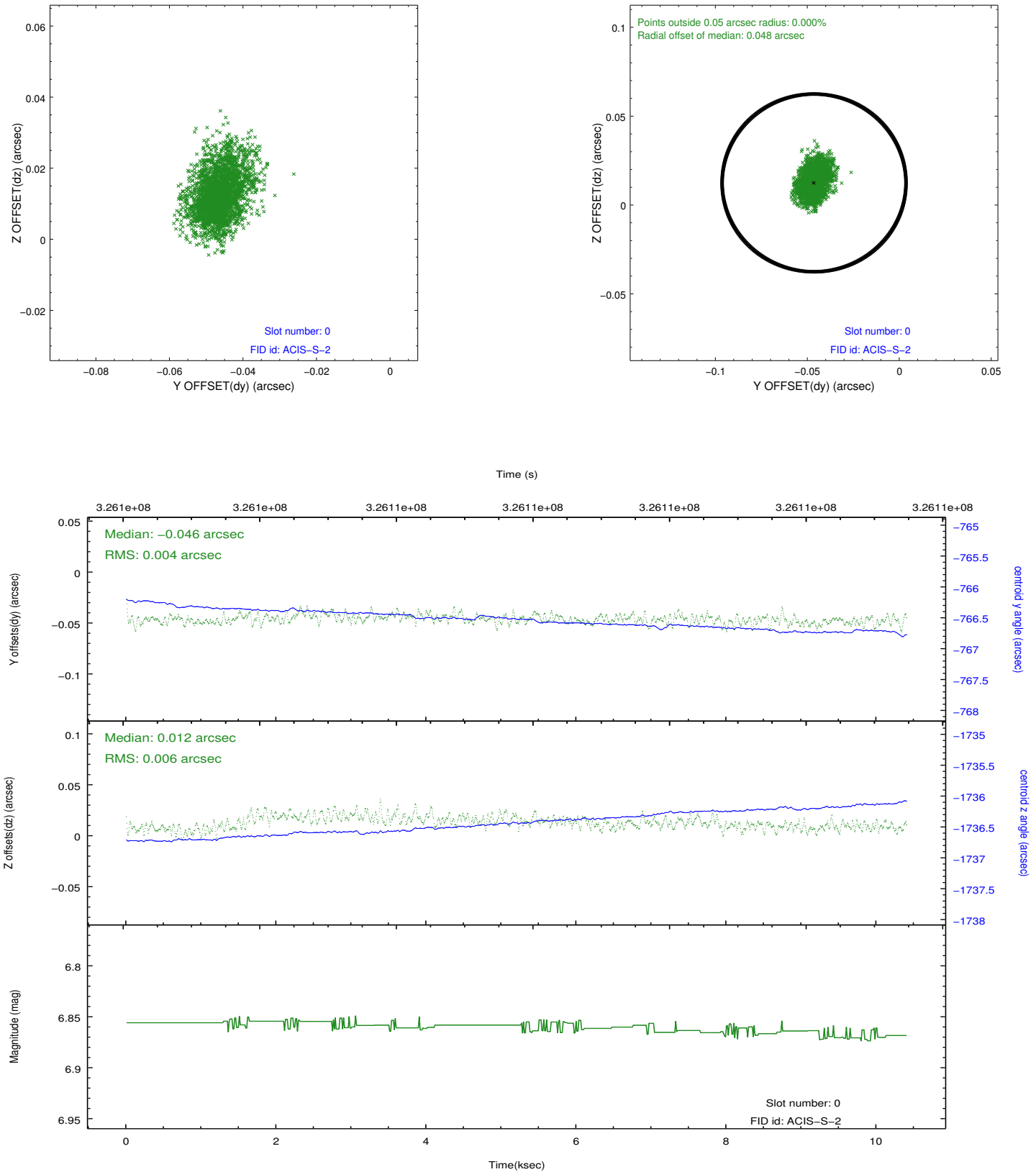


2.4.5 Slot 7

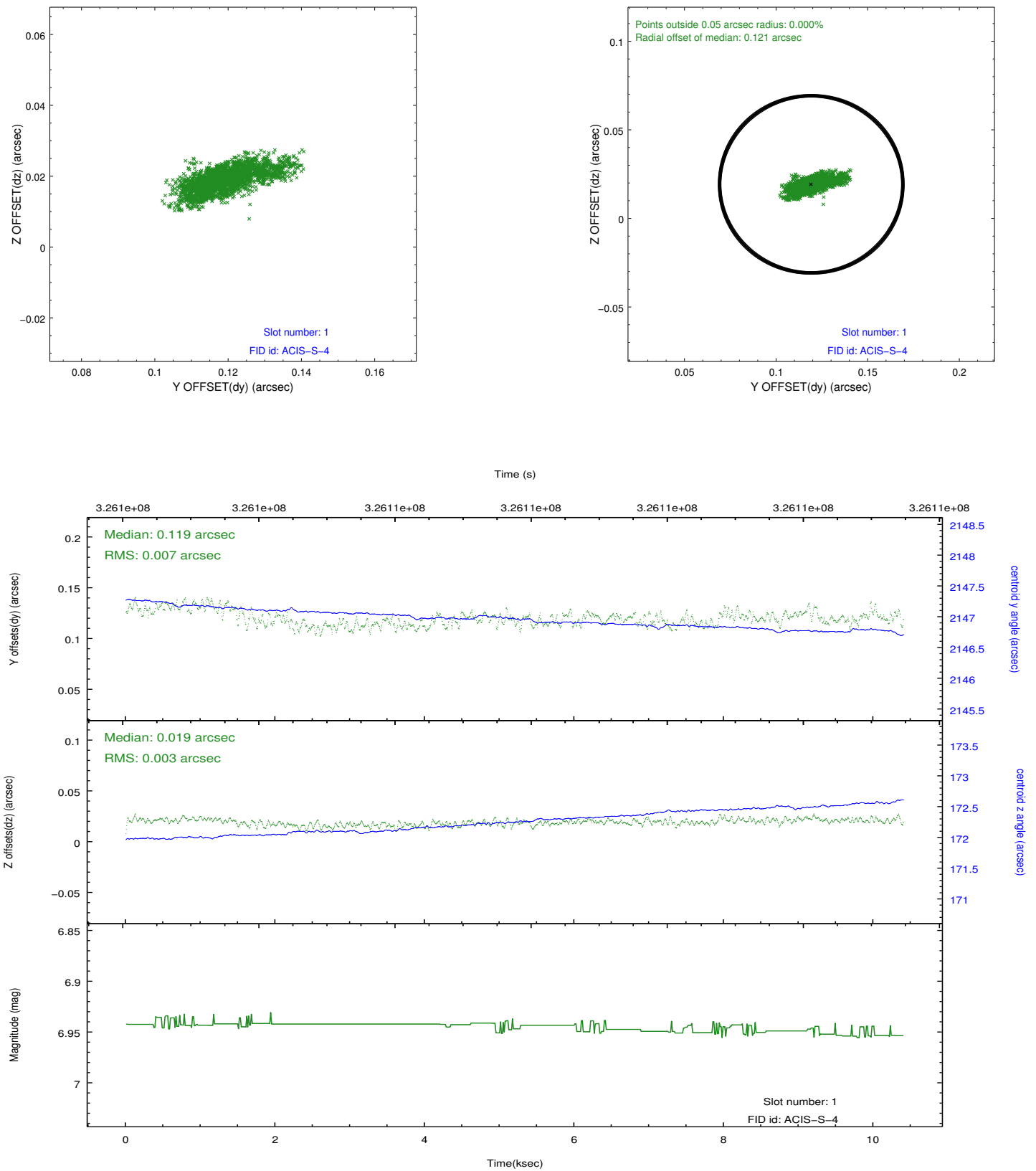


2.5 FID Slots

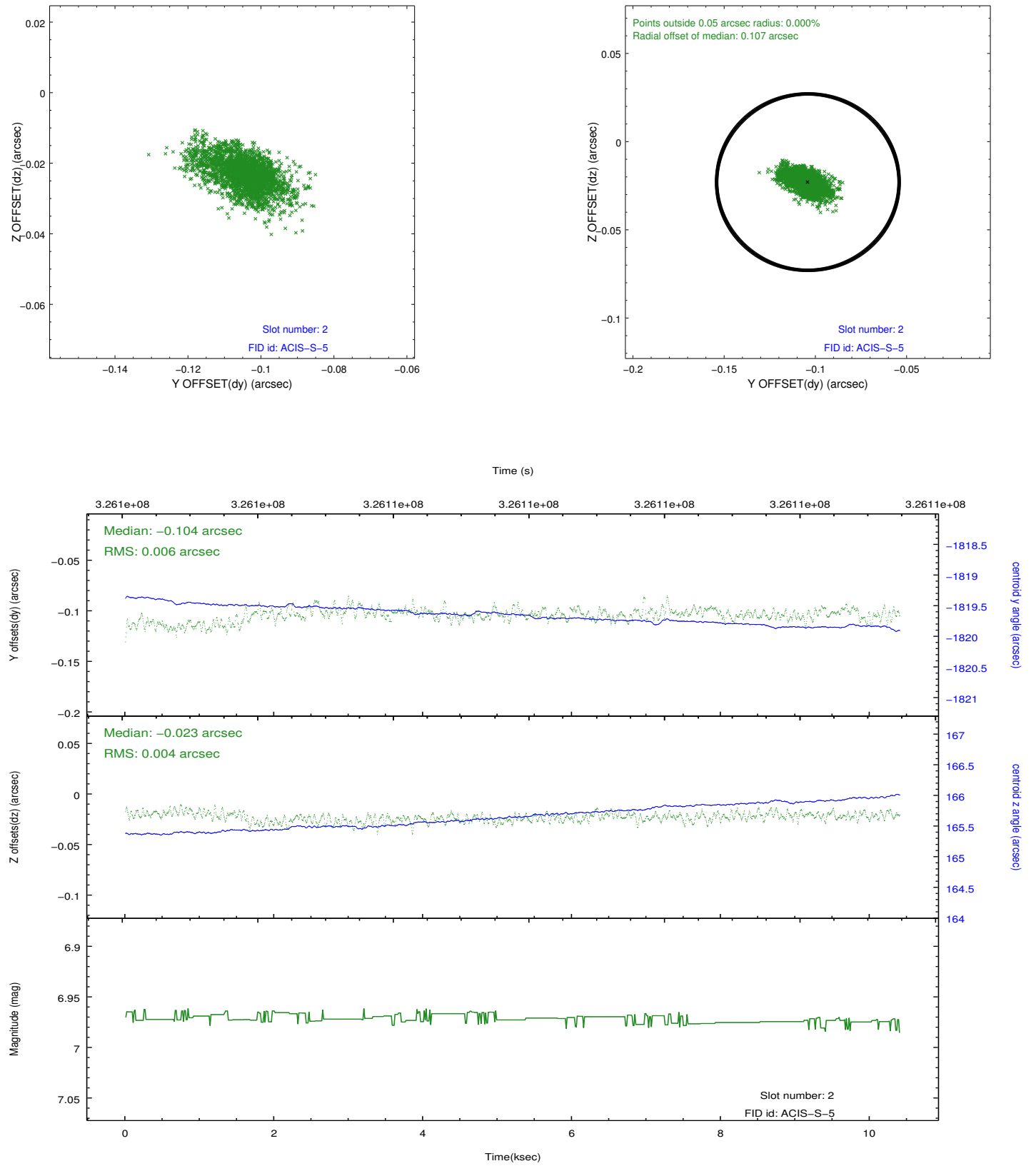
2.5.1 Slot 0



2.5.2 Slot 1



2.5.3 Slot 2



A Summary

A.1 Status

V&V Scientist	Jen Lauer
V&V Date (YYYY-MM-DD)	2012.05.15
V&V Edition	1
V&V Disposition and Status	OK
V&V Charge Time	10.1439999

A.2 Comments