

V&V Reference Report

L2 ASCDS Version : 8.4.4

Observation 8951 - L2 Version 3
Chandra X-Ray Center

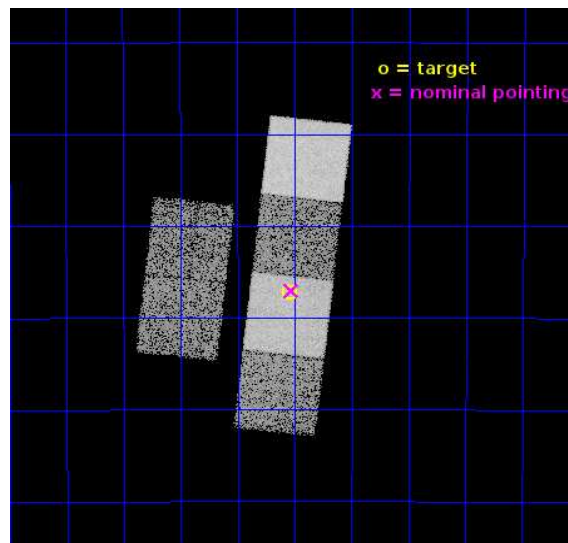
L2 Processing Date : Jul 15 2015

Contents

1	Front	2
2	OBI	3
2.1	OBI	3
2.1.1	Images	3
2.1.2	Bias	3
2.1.3	Parameters	4
2.1.4	Events	4
2.2	Compared Parameters	5
2.3	Aspect	6
2.4	Star Slots	9
2.4.1	Slot 3	9
2.4.2	Slot 4	10
2.4.3	Slot 5	11
2.4.4	Slot 6	12
2.4.5	Slot 7	13
2.5	FID Slots	14
2.5.1	Slot 0	14
2.5.2	Slot 1	15
2.5.3	Slot 2	16
A	Summary	17
A.1	Status	17
A.2	Comments	17

1 Front

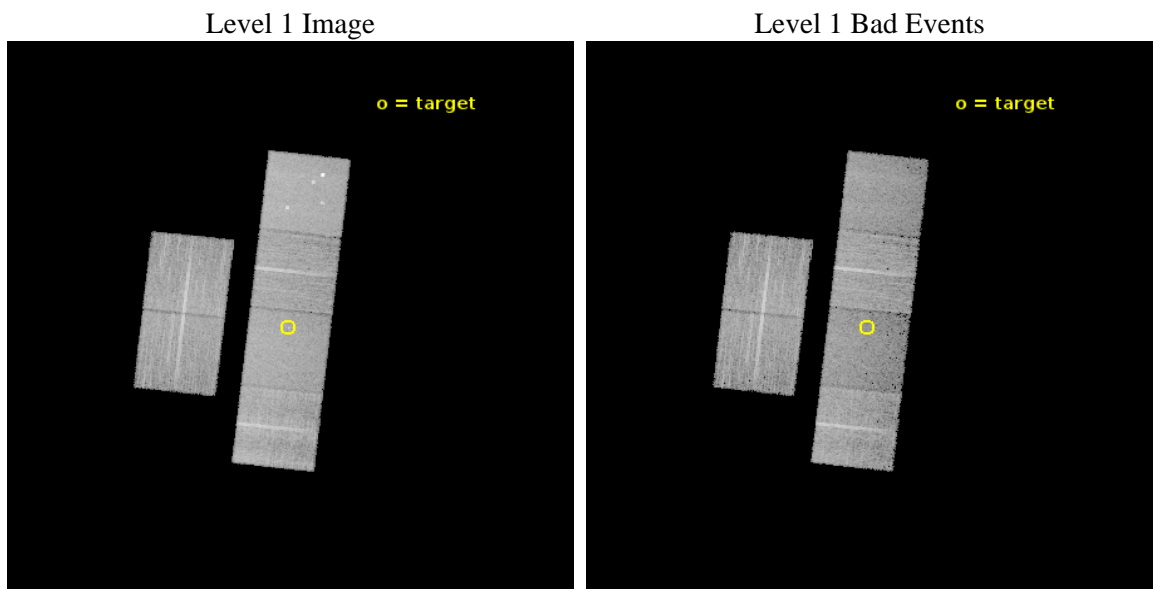
seq_num	300207	Sequence number
obs_id	8951	Observation id
title	A Chandra Legacy Survey of Dynamically Active Globular Clusters	Pr
observer	Prof. David Pooley	Principal investigator
object	NGC 6256	Source name
dtcycle	0	
cycle	P	events from which exps? Prim/Second/Both
ra_targ	254.885833	Observer's specified target RA [deg]
dec_targ	-37.121389	Observer's specified target Dec [deg]
ra_nom	254.88212942367	Nominal RA [deg]
dec_nom	-37.117537175924	Nominal Dec [deg]
roll_nom	96.434507231185	Nominal Roll [deg]
revision	3	Processing version of data
ontime	9526.0249041319	Sum of GTIs [s]
livetime	9405.4006409122	Livetime [s]
ontime2	9522.7839037776	Sum of GTIs [s]
ontime3	9526.0249041319	Sum of GTIs [s]
ontime5	9526.0249041319	Sum of GTIs [s]
ontime6	9526.0249041319	Sum of GTIs [s]
ontime7	9526.0249041319	Sum of GTIs [s]
ontime8	9526.0249041319	Sum of GTIs [s]
l2events	114868	Number of level 2 events



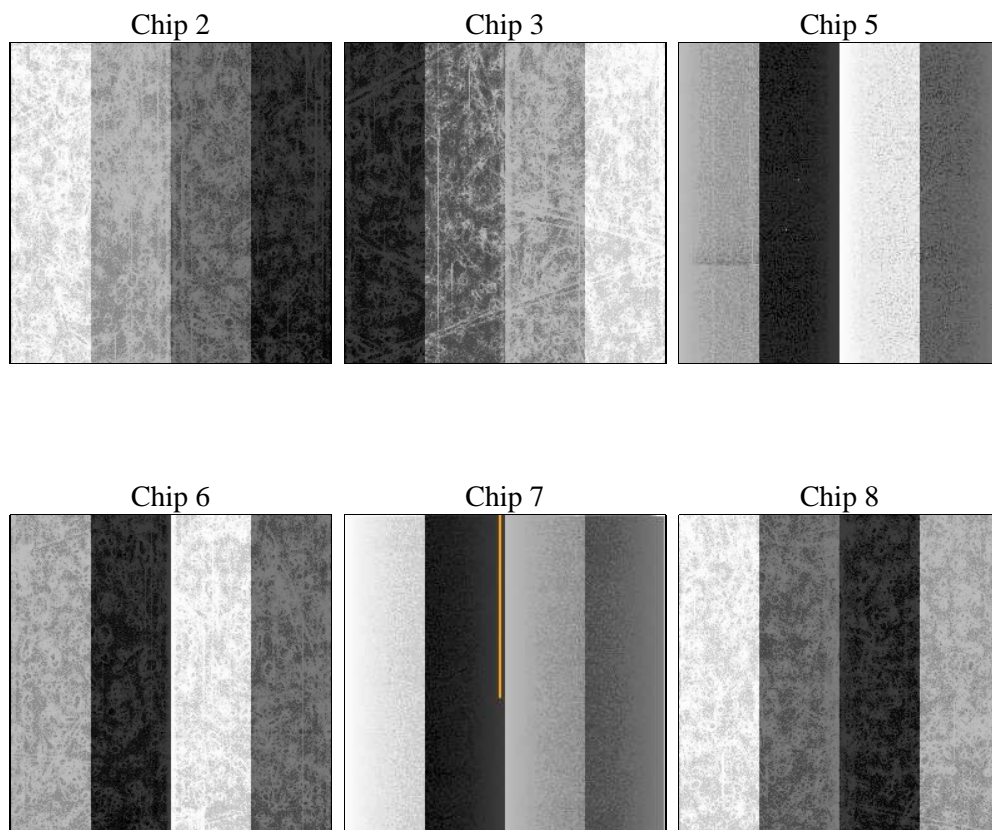
2 OBI

2.1 OBI

2.1.1 Images



2.1.2 Bias



2.1.3 Parameters

obi_num	0	Obi number	sched_exp_time	9400.000000	[s] Scheduled observation exposure time
ascdsver	10.4.1	Processing system revision	ontime	9526.0249041319	Sum of GTIs [s]
caldsver	4.6.8	 	ontime2	9522.7839037776	Sum of GTIs [s]
date	2015-07-15T16:08:11	Date and time of file creation	ontime3	9526.0249041319	Sum of GTIs [s]
revision	3	Processing version of data	ontime5	9526.0249041319	Sum of GTIs [s]
			ontime6	9526.0249041319	Sum of GTIs [s]
			ontime7	9526.0249041319	Sum of GTIs [s]
			ontime8	9526.0249041319	Sum of GTIs [s]
			l1events	547178	Number of level 1 events

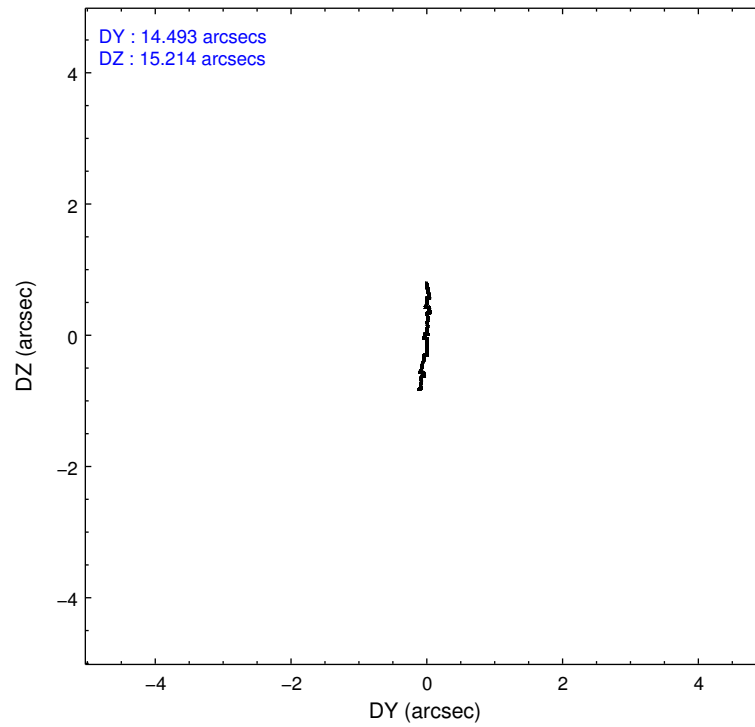
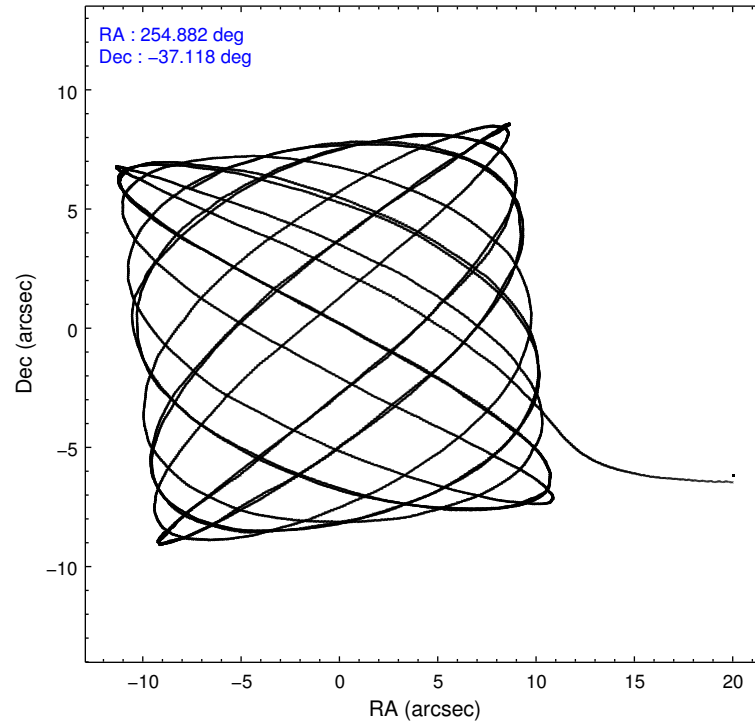
2.1.4 Events

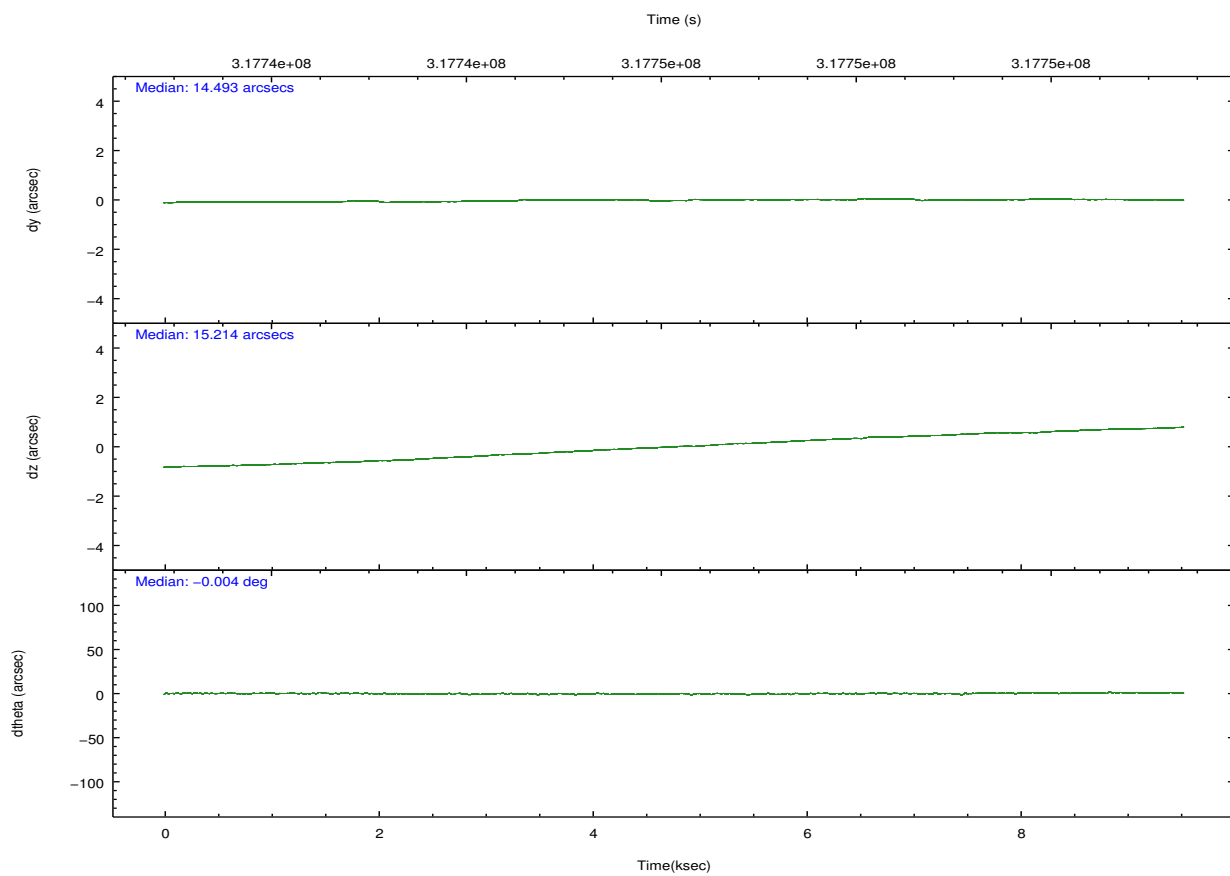
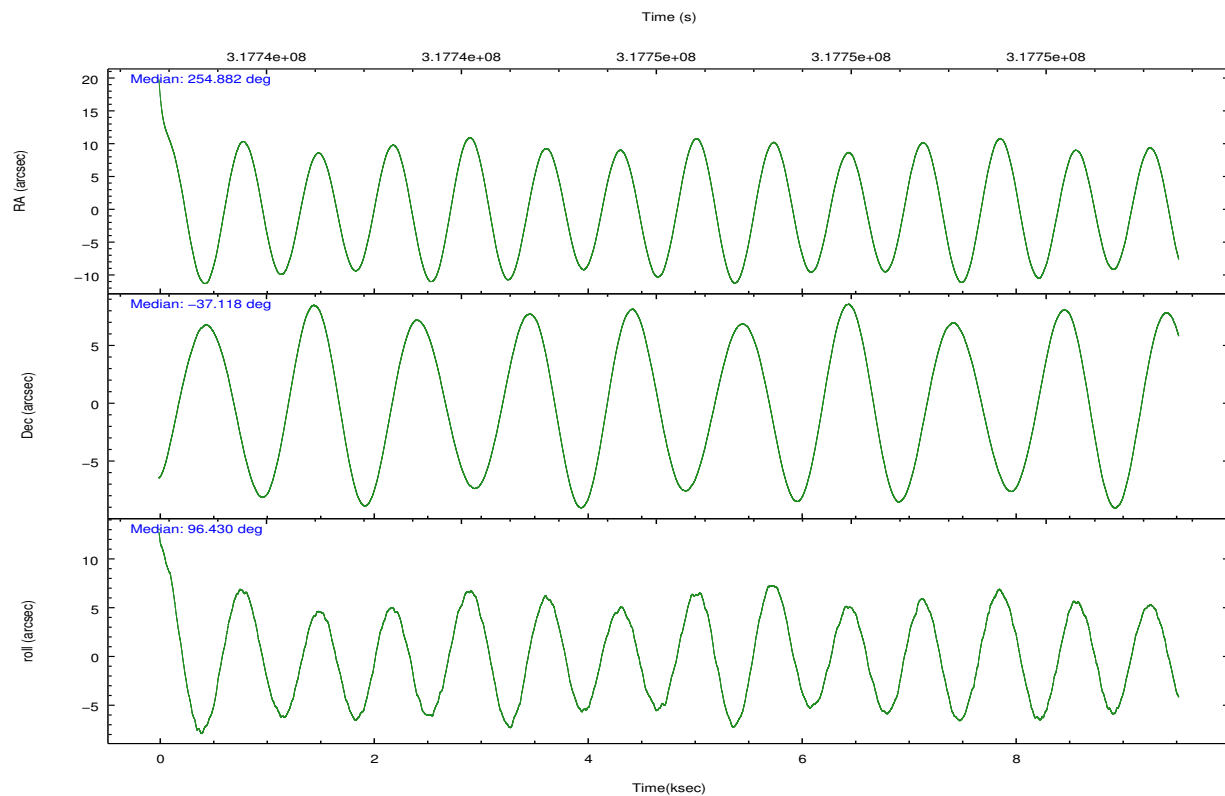
	ccd 2	ccd 3	ccd 5	ccd 6	ccd 7	ccd 8		ccd 2	ccd 3	ccd 5	ccd 6	ccd 7	ccd 8
level 1 events	85325	79639	111059	82960	87921	100274	grade 0 events	2907	2710	6098	3100	3890	6957
rejected events	77766	72242	56459	74767	48988	77016		3%	3%	5%	3%	4%	6%
rejected %	91%	90%	50%	90%	55%	76%	grade 1 events	48	37	198	44	139	93
								0%	0%	0%	0%	0%	0%
							grade 2 events	1854	1701	17846	1817	8255	5843
								2%	2%	16%	2%	9%	5%
							grade 3 events	813	908	2108	911	3784	2453
								0%	1%	1%	1%	4%	2%
							grade 4 events	876	835	2092	920	3625	2303
								1%	1%	1%	1%	4%	2%
							grade 5 events	2730	3150	8310	2989	9147	4503
								3%	3%	7%	3%	10%	4%
							grade 6 events	1421	1570	28766	1785	20902	6790
								1%	1%	25%	2%	23%	6%
							grade 7 events	74676	68728	45641	71394	38179	71332
								87%	86%	41%	86%	43%	71%

2.2 Compared Parameters

Parameter	Planned	Actual	Parameter	Planned	Actual
Instrument	ACIS	ACIS	Obspar format version number	7	7
Detector	ACIS-235678	ACIS-235678	Obspar file type	PREDICTED	ACTUAL
Grating	NONE	NONE	Obspar update status	NONE	UPDATED
Data mode	VFAINT	VFAINT	CCD I0 on	N	N
Observation mode	POINTING	POINTING	CCD I1 on	N	N
[deg] Pointing RA	254.902835	254.8821294236668	CCD I2 on	O1	Y
[deg] Pointing Dec	-37.139347	-37.11753717592388	CCD I3 on	O2	Y
[deg] Pointing Roll	96.290383	96.43450723118487	CCD S0 on	N	N
[mm] SIM focus pos	-0.684267	-0.6828225247311905	CCD S1 on	Y	Y
[mm] SIM defocus	0	0.001444936568705701	CCD S2 on	Y	Y
[mm] SIM translation stage pos	-190.132523	-190.1400660498719	CCD S3 on	Y	Y
[mm] SIM translation stage offset	0	0.00754346686406393	CCD S4 on	Y	Y
[s] Observation start time (MET)	317741495.184000	317740256.62233	CCD S5 on	N	N
Observation start date	2008-01-26T13:30:30	2008-01-26T13:10:56	Number of optional ACIS chips dropped	0	0
[s] Observation end time (MET)	317750895.184000	317751729.44789	On-chip summing requested	N	N
Observation end date	2008-01-26T16:07:10	2008-01-26T16:22:09	Subarray requested	NONE	NONE
Read mode	TIMED	TIMED	Alternating exposures requested	N	N
			[s] Primary exposure time	0.000000	3.2

2.3 Aspect



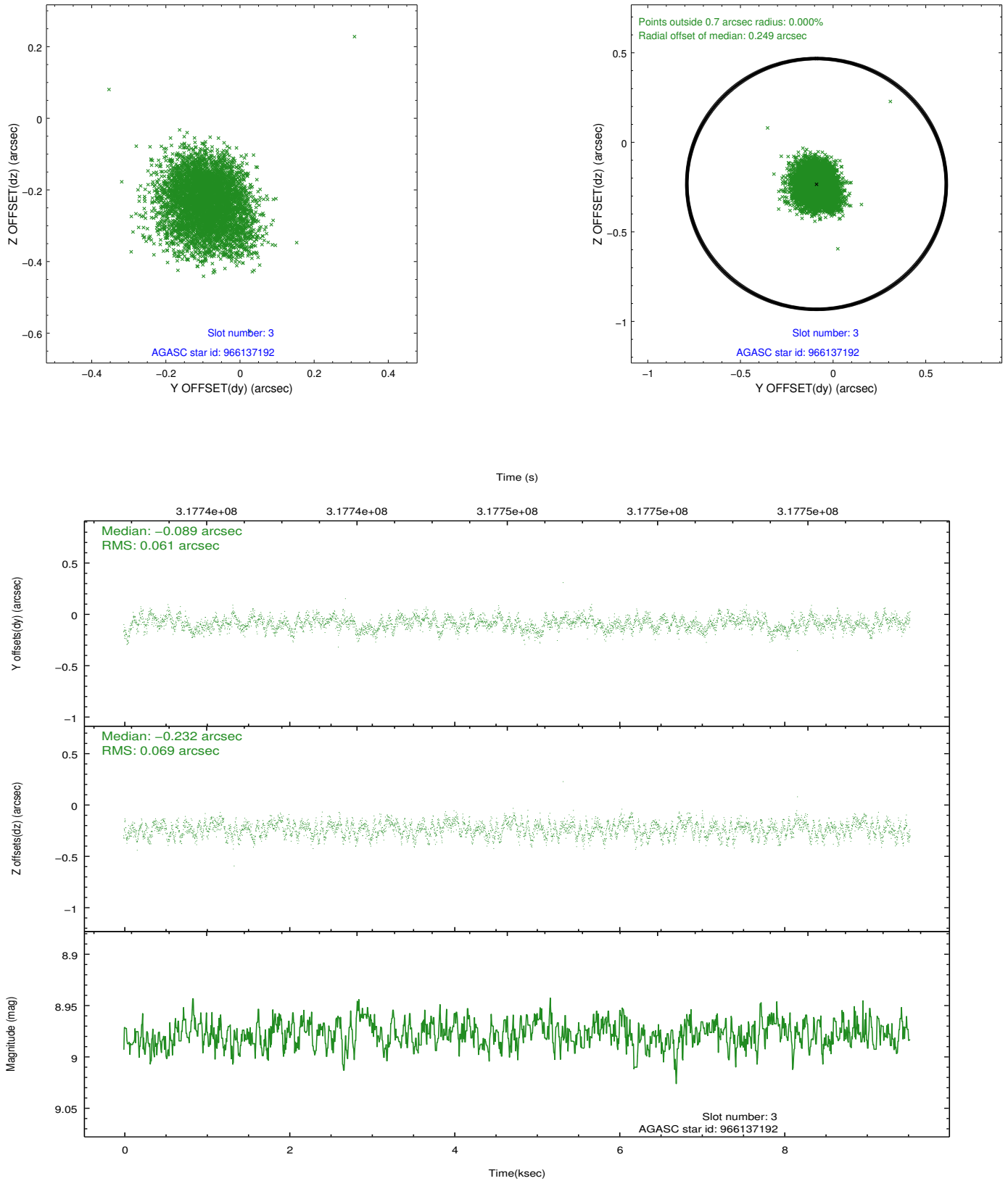


Slot Statistics

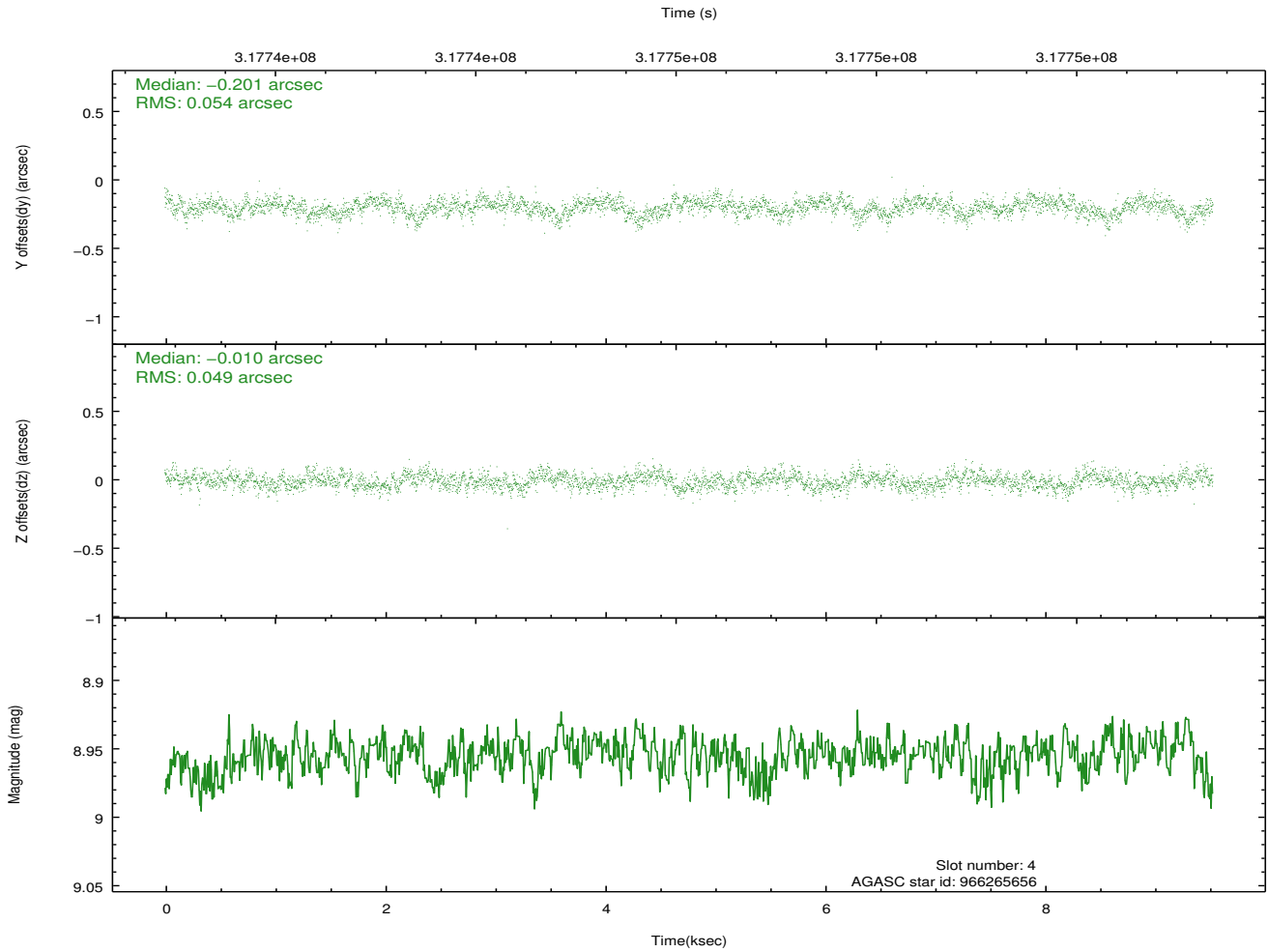
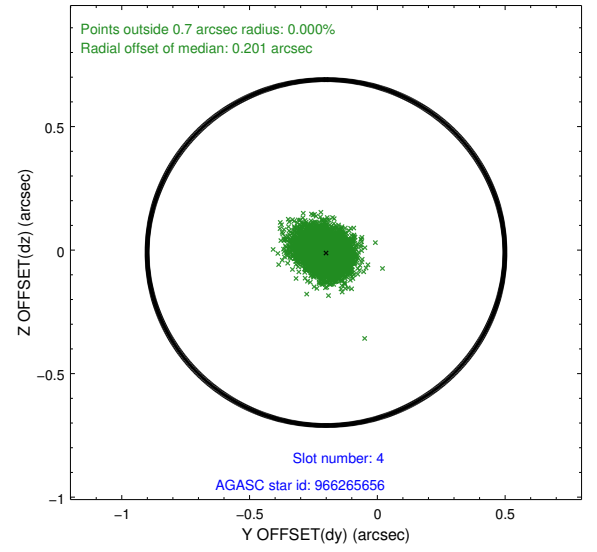
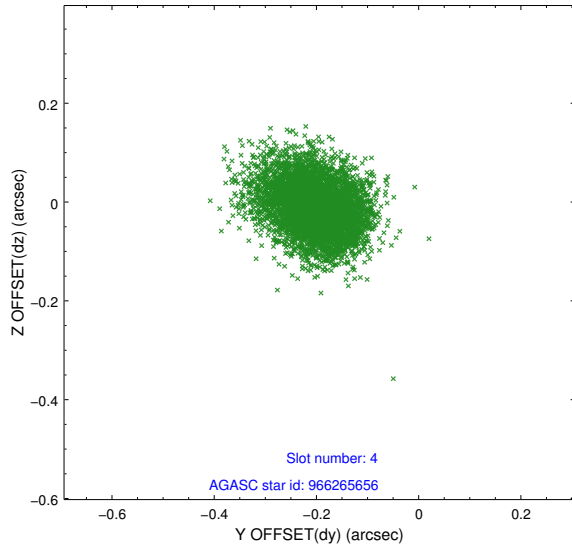
slot	status	used	id	mag	n_pts	med_dy	med_dz	dr1	dr2	ra	dec	mean_y	mean_z
0	FID		ACIS-S-2	7.10	2325	-0.091	-0.041	0.011	0.018	0.000000	0.000000	-767.51	-1736.63
1	FID		ACIS-S-4	7.20	2325	0.217	0.055	0.007	0.012	0.000000	0.000000	2145.81	171.38
2	FID		ACIS-S-5	7.22	2325	-0.156	-0.006	0.009	0.017	0.000000	0.000000	-1819.70	165.62
3	GUIDE	used	966137192	8.98	4643	-0.089	-0.232	0.099	0.158	254.209673	-37.055636	510.27	1947.30
4	GUIDE	used	966265656	8.95	4645	-0.201	-0.010	0.077	0.125	254.387083	-36.839229	1232.53	1359.87
5	GUIDE	used	1031275800	8.05	4650	0.133	-0.117	0.058	0.092	254.430595	-37.763940	-2091.43	1583.09
6	GUIDE	used	966264944	8.04	4651	0.113	0.140	0.075	0.117	255.480590	-37.301475	-766.70	-1579.32
7	GUIDE	used	1031410088	7.88	4650	0.044	0.223	0.067	0.108	255.751406	-37.719648	-2352.23	-2171.84

2.4 Star Slots

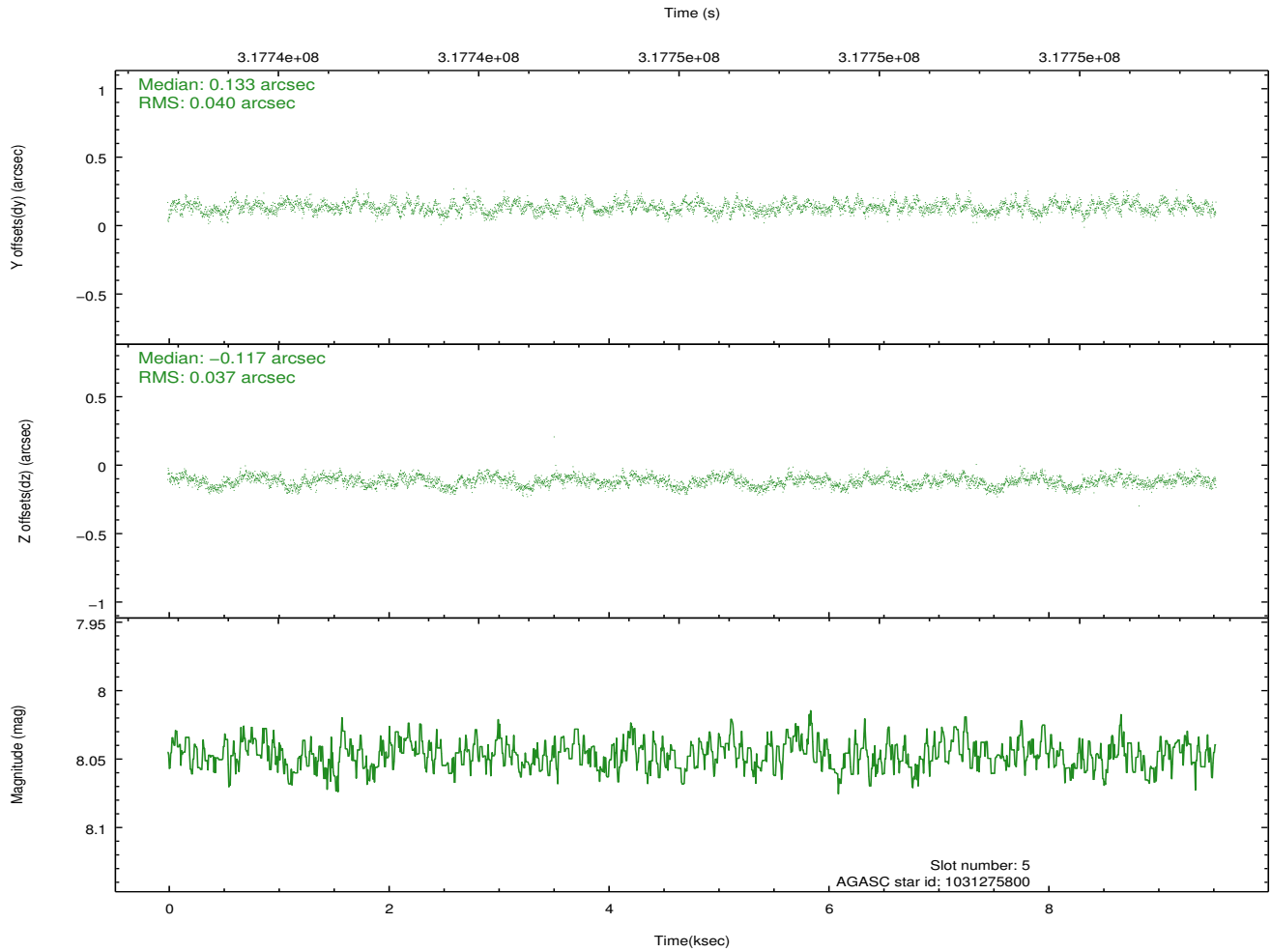
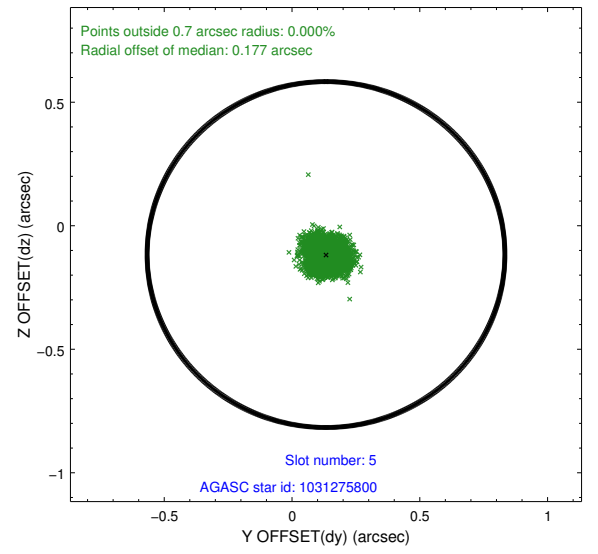
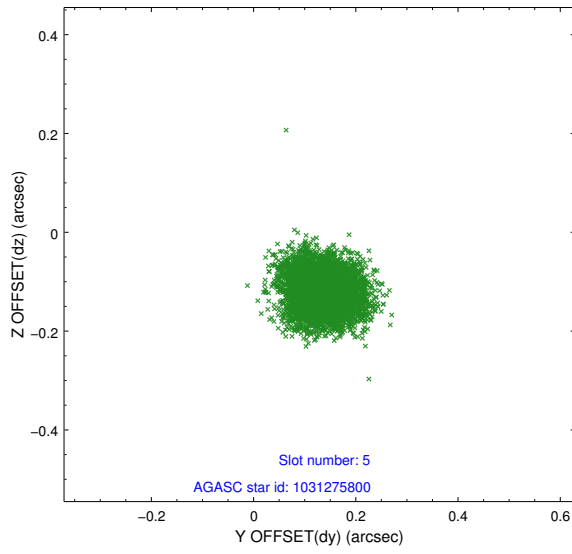
2.4.1 Slot 3



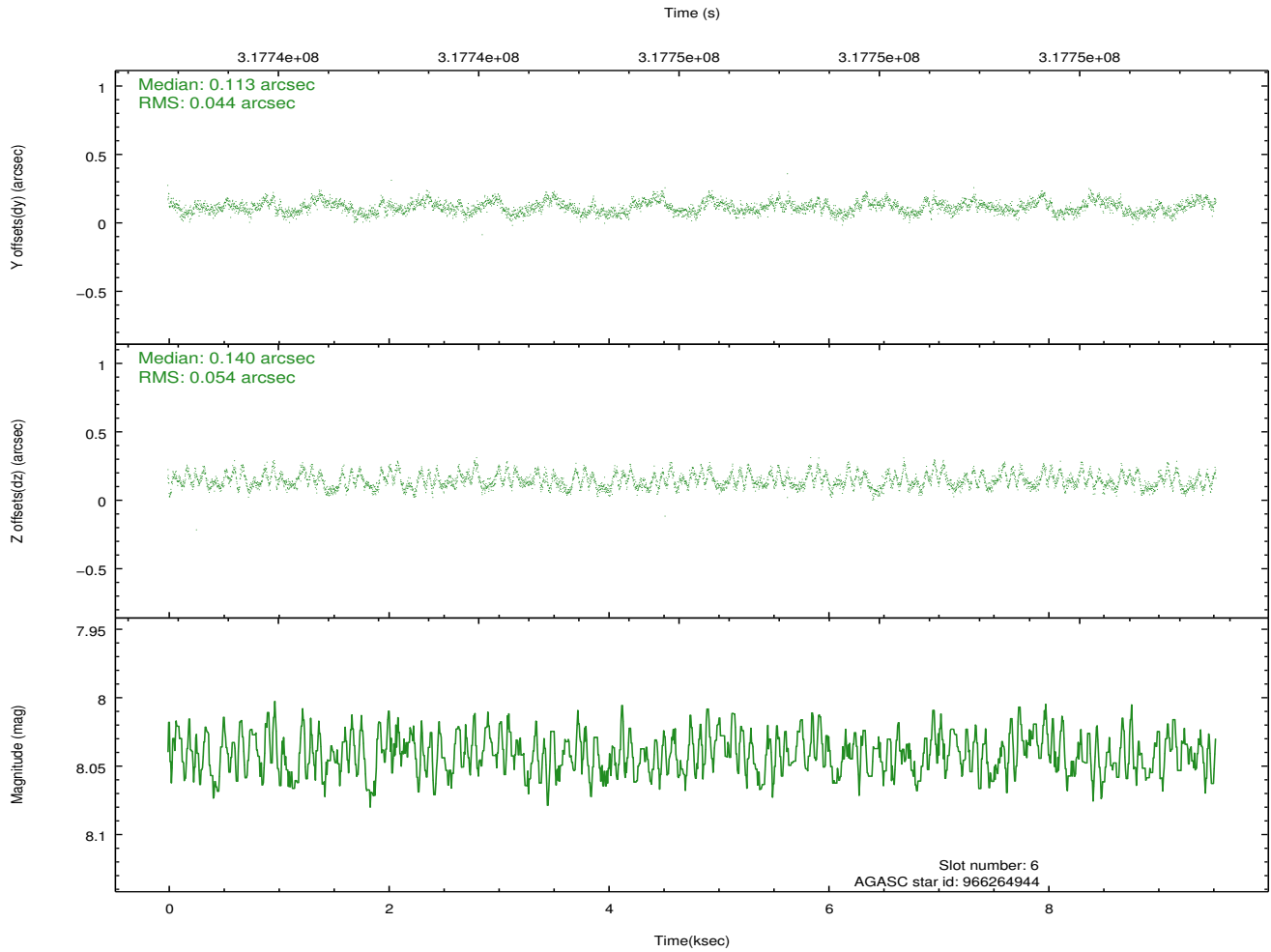
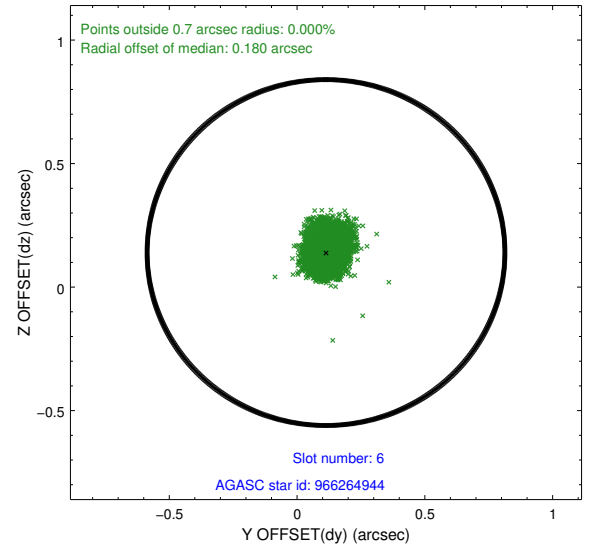
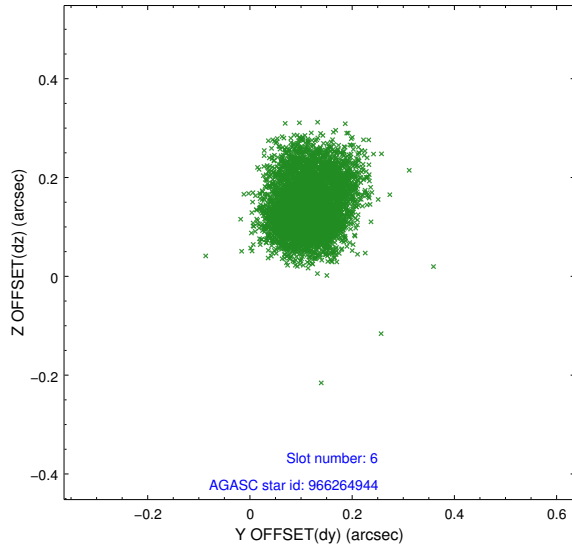
2.4.2 Slot 4



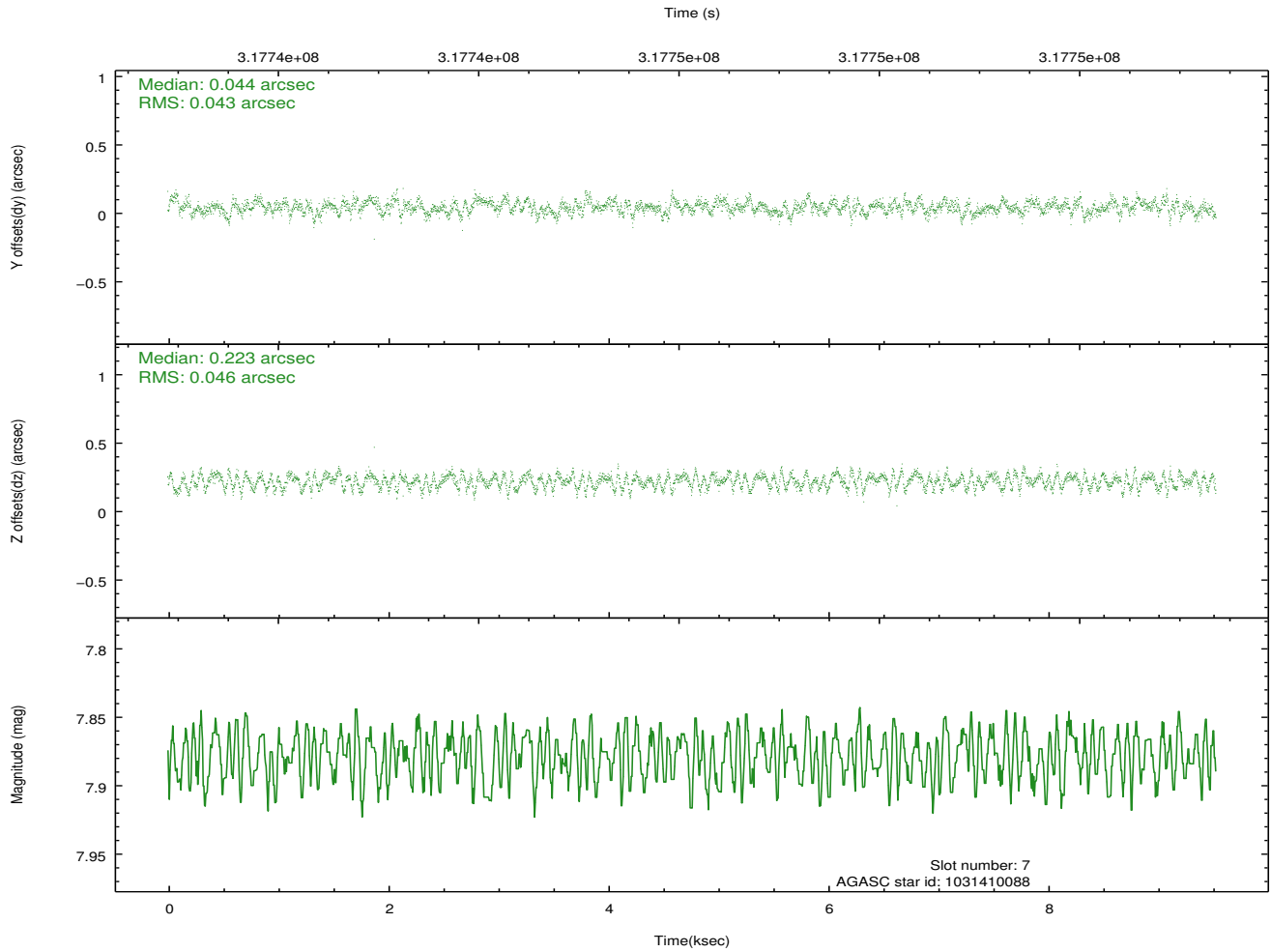
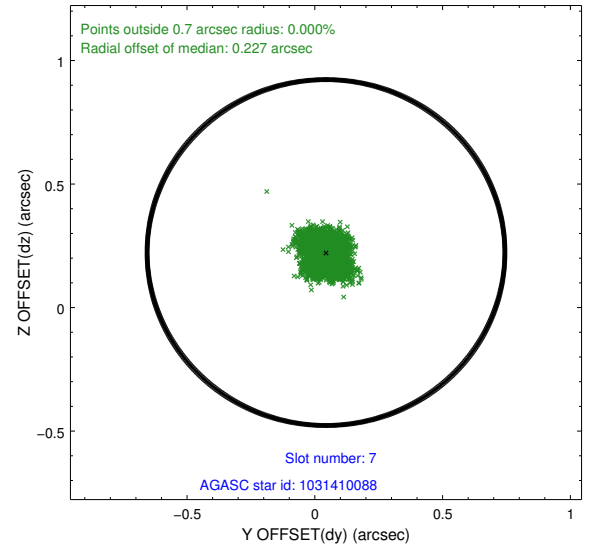
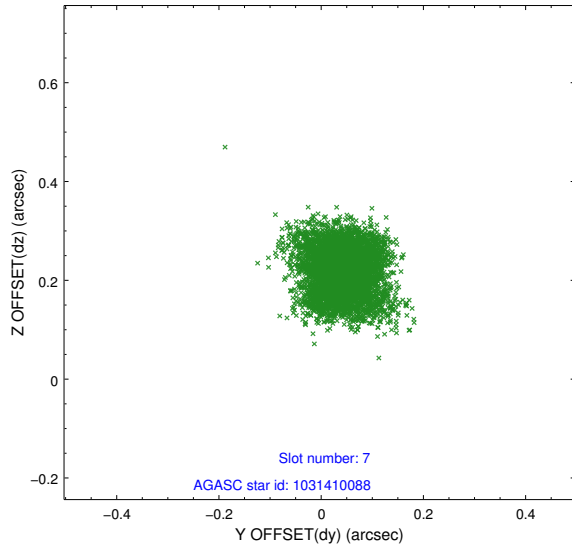
2.4.3 Slot 5



2.4.4 Slot 6

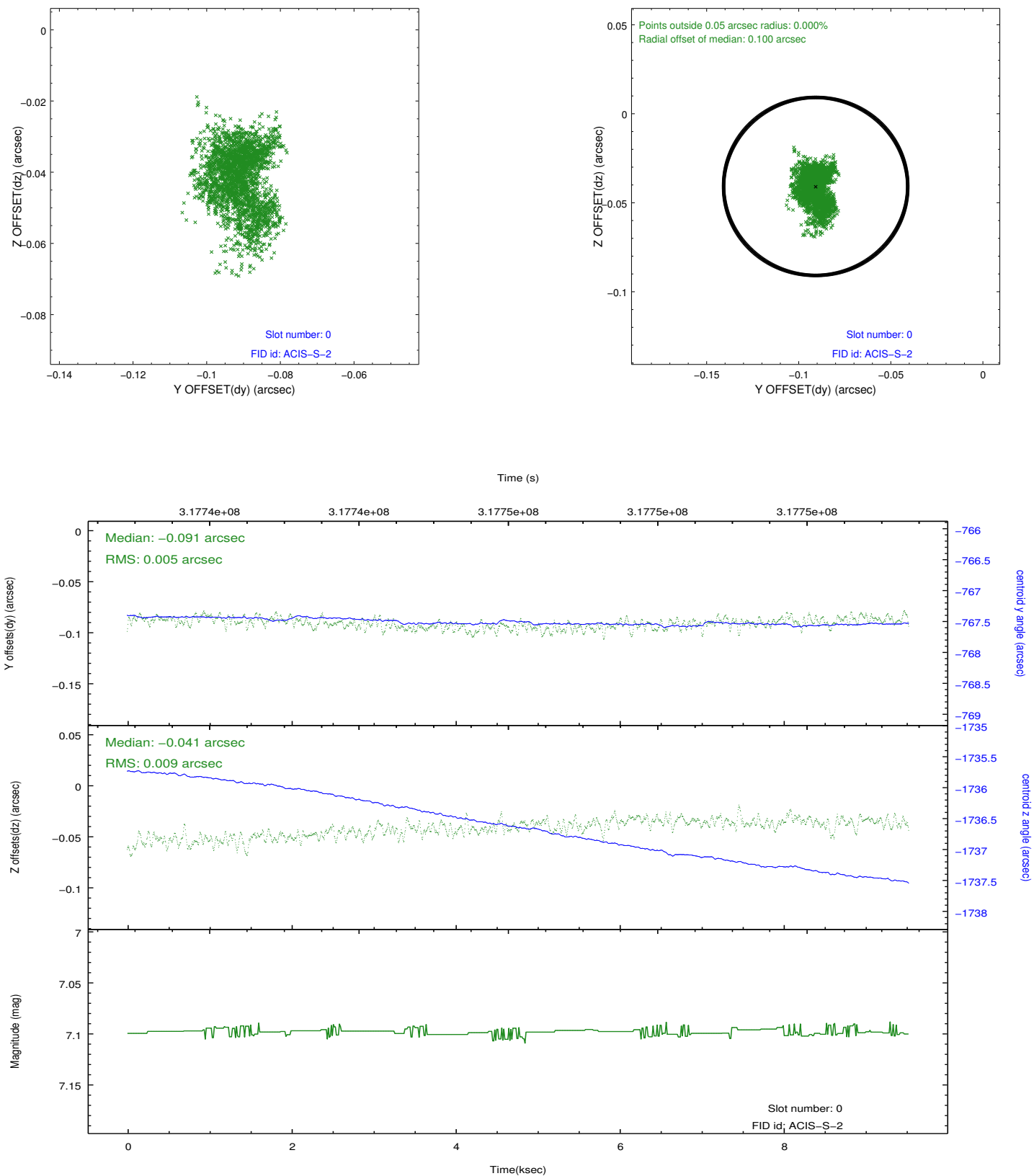


2.4.5 Slot 7

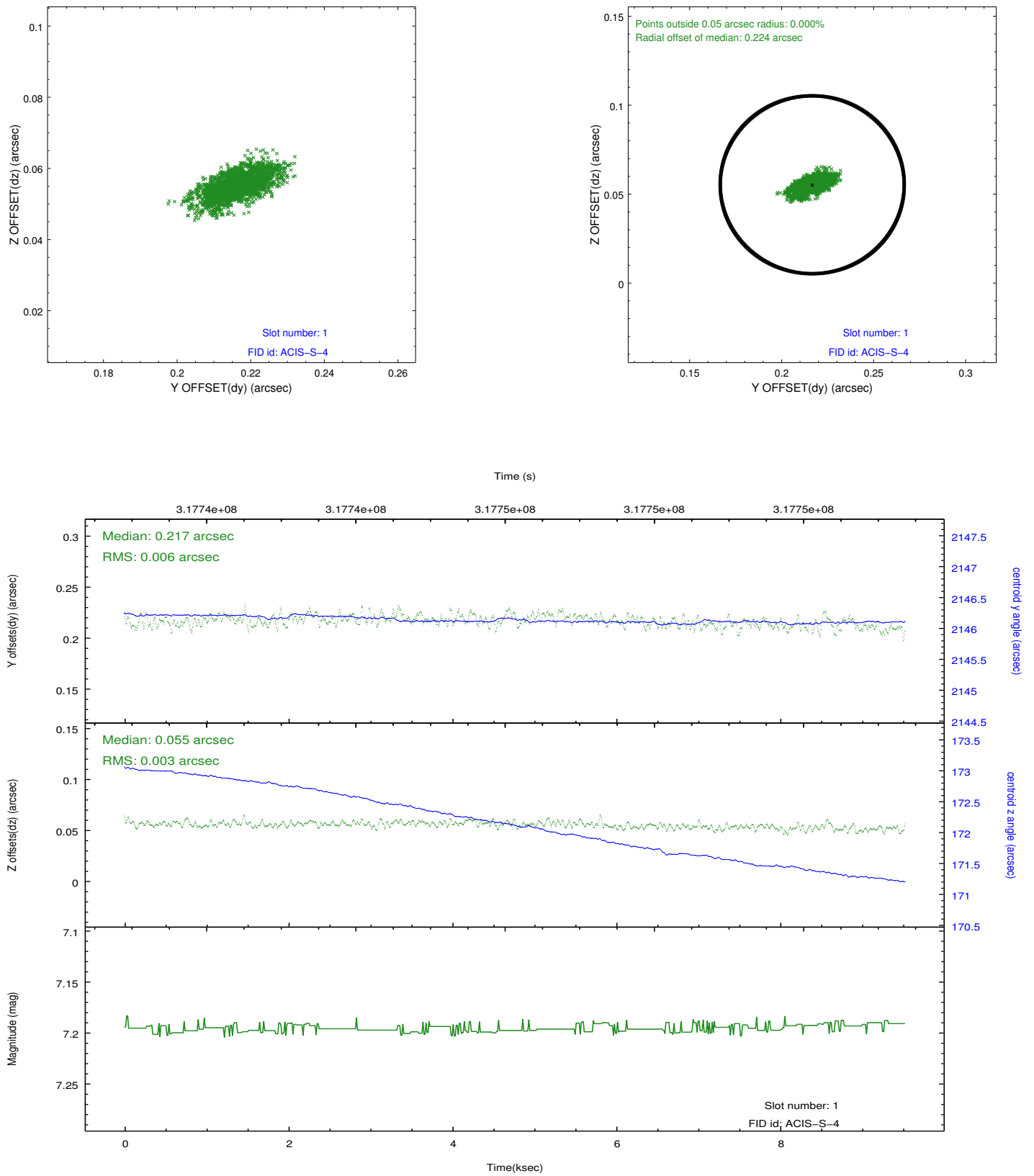


2.5 FID Slots

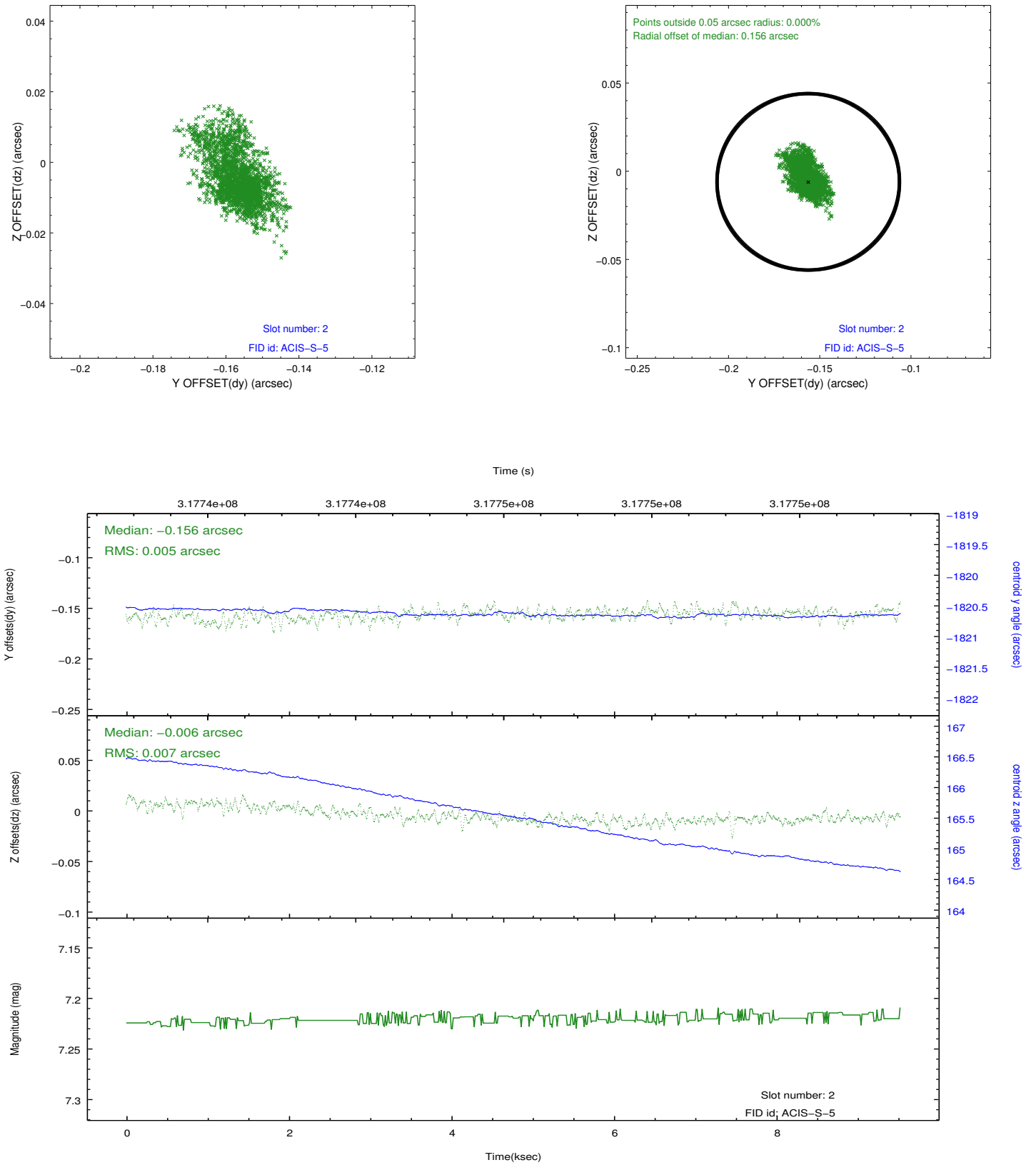
2.5.1 Slot 0



2.5.2 Slot 1



2.5.3 Slot 2



A Summary

A.1 Status

V&V Scientist	Beth Sundheim
V&V Date (YYYY-MM-DD)	2015.07.15
V&V Edition	1
V&V Disposition and Status	OK
V&V Charge Time	9.52639996

A.2 Comments

Because an aspect solution is determined in a finite time interval, a small number of events registered within the delta time before the first aspect solution do not have proper sky coordinates. We apply a manual workaround to exclude those events with incorrect sky positions until the complete s/w resolution is obtained.