

# V&V Reference Report

## L2 ASCDS Version : 8.4.4

Observation 8272 - L2 Version 3  
Chandra X-Ray Center

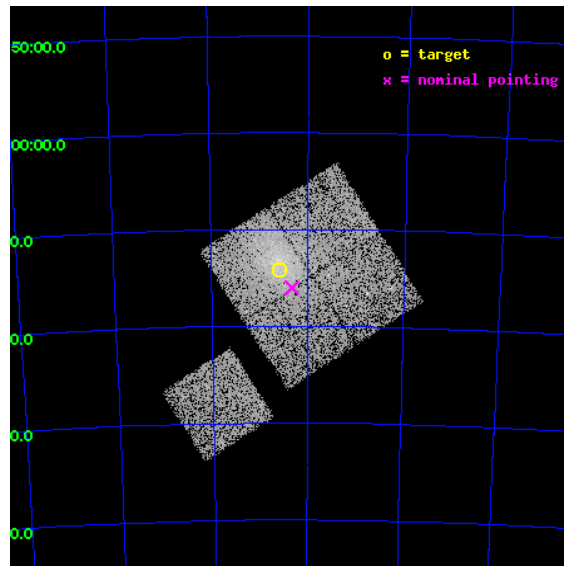
L2 Processing Date : Apr 22 2012

## Contents

<b>1</b>	<b>Front</b>	<b>2</b>
<b>2</b>	<b>OBI</b>	<b>3</b>
2.1	OBI . . . . .	3
2.1.1	Images . . . . .	3
2.1.2	Bias . . . . .	3
2.1.3	Parameters . . . . .	4
2.1.4	Events . . . . .	4
2.2	Compared Parameters . . . . .	5
2.3	Aspect . . . . .	6
2.4	Star Slots . . . . .	9
2.4.1	Slot 3 . . . . .	9
2.4.2	Slot 4 . . . . .	10
2.4.3	Slot 5 . . . . .	11
2.4.4	Slot 6 . . . . .	12
2.4.5	Slot 7 . . . . .	13
2.5	FID Slots . . . . .	14
2.5.1	Slot 0 . . . . .	14
2.5.2	Slot 1 . . . . .	15
2.5.3	Slot 2 . . . . .	16
<b>A</b>	<b>Summary</b>	<b>17</b>
A.1	Status . . . . .	17
A.2	Comments . . . . .	17

# 1 Front

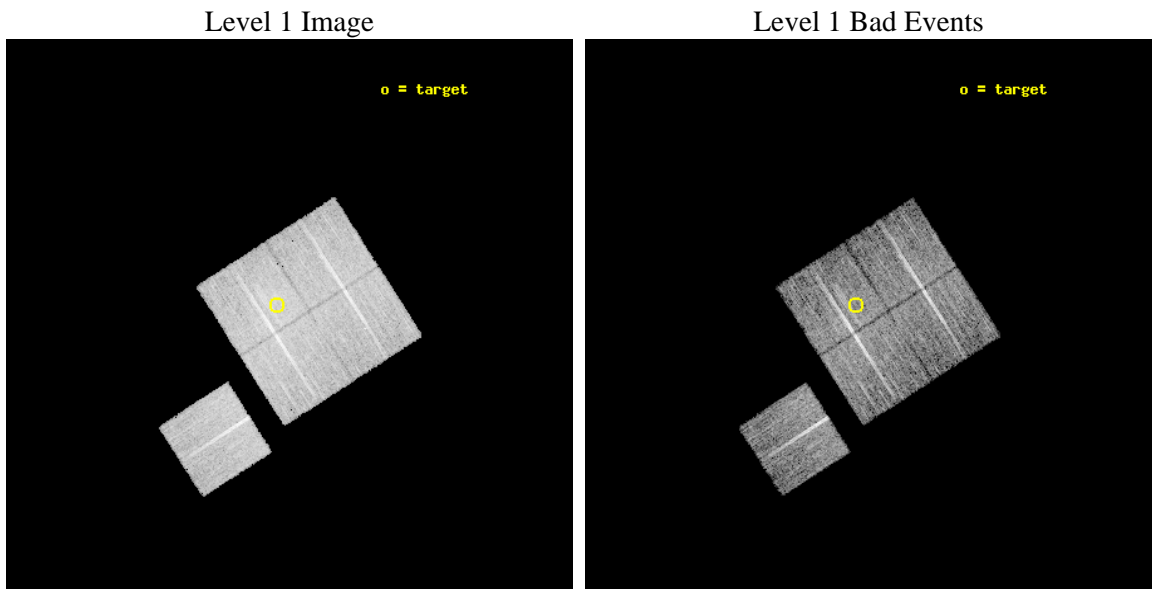
seq_num	800667	Sequence number
obs_id	8272	Observation id
title	Chandra observations of flux-limited sample of low-redshift galaxy clusters - A	Proposal title
observer	Dr. Stephen Murray	Principal investigator
object	S0405	Source name
dtcycle	0	&#160
cycle	P	events from which exps? Prim/Second/Both
ra_targ	57.866667	Observer's specified target RA [deg]
dec_targ	-82.236389	Observer's specified target Dec [deg]
ra_nom	57.704412696104	Nominal RA [deg]
dec_nom	-82.267151849596	Nominal Dec [deg]
roll_nom	237.31347055001	Nominal Roll [deg]
revision	3	Processing version of data
ontime	8041.3590915799	Sum of GTIs [s]
livetime	7936.292815086	Livetime [s]
ontime0	8044.5000618696	Sum of GTIs [s]
ontime1	8044.5000618696	Sum of GTIs [s]
ontime2	8041.3590915799	Sum of GTIs [s]
ontime3	8041.3590915799	Sum of GTIs [s]
ontime6	8044.5000618696	Sum of GTIs [s]
l2events	37132	Number of level 2 events



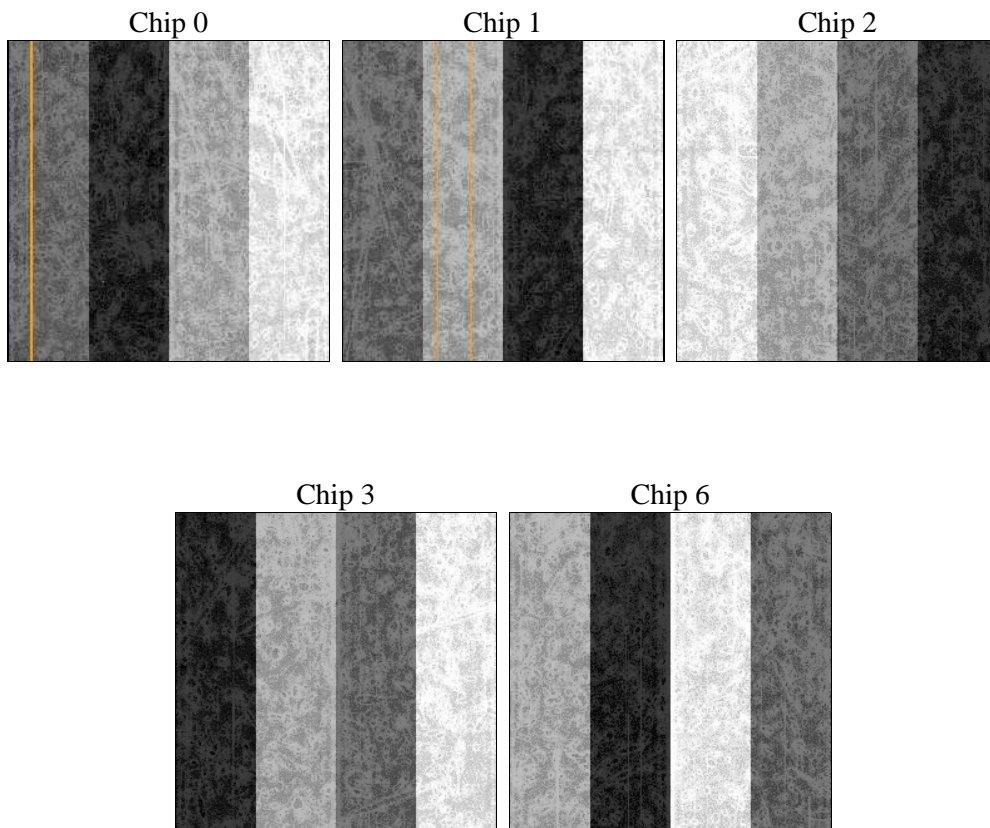
## 2 OBI

### 2.1 OBI

#### 2.1.1 Images



#### 2.1.2 Bias



### 2.1.3 Parameters

obi_num	0	Obi number	sched_exp_time	8000.000000	[s] Scheduled observation exposure time
ascdsver	8.4.4	Processing system revision	ontime	8041.3590915799	Sum of GTIs [s]
caldsver	4.4.9	&#160	ontime0	8044.5000618696	Sum of GTIs [s]
date	2012-04-22T04:22:24	Date and time of file creation	ontime1	8044.5000618696	Sum of GTIs [s]
revision	3	Processing version of data	ontime2	8041.3590915799	Sum of GTIs [s]
			ontime3	8041.3590915799	Sum of GTIs [s]
			ontime6	8044.5000618696	Sum of GTIs [s]
			l1events	325869	Number of level 1 events

### 2.1.4 Events

	ccd 0	ccd 1	ccd 2	ccd 3	ccd 6
level 1 events	60669	62047	67407	72044	63702
rejected events	53379	53436	60017	58830	57071
rejected %	87%	86%	89%	81%	89%

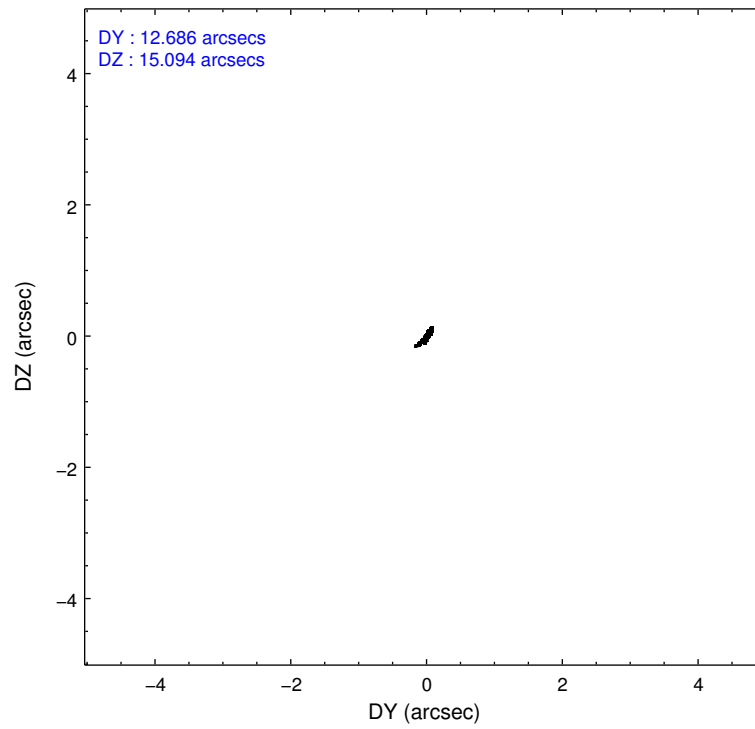
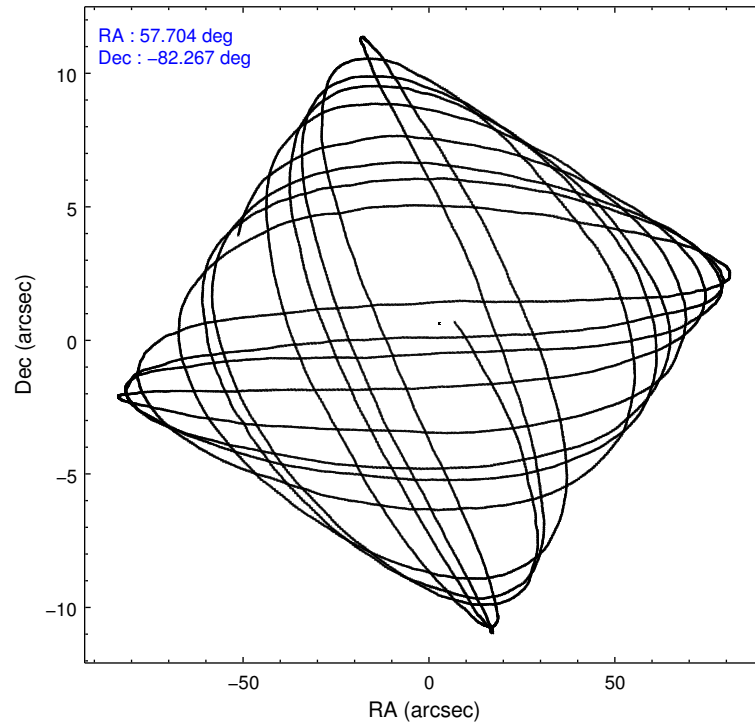
	ccd 0	ccd 1	ccd 2	ccd 3	ccd 6
grade 0 events	2872	3715	3150	8043	2346
	4%	5%	4%	11%	3%
grade 1 events	44	32	34	92	25
	0%	0%	0%	0%	0%
grade 2 events	1635	1722	1586	2000	1493
	2%	2%	2%	2%	2%
grade 3 events	733	816	712	891	685
	1%	1%	1%	1%	1%
grade 4 events	754	849	778	888	726
	1%	1%	1%	1%	1%
grade 5 events	2239	2471	2072	2633	2471
	3%	3%	3%	3%	3%
grade 6 events	1296	1511	1167	1397	1388
	2%	2%	1%	1%	2%
grade 7 events	51096	50931	57908	56100	54568
	84%	82%	85%	77%	85%

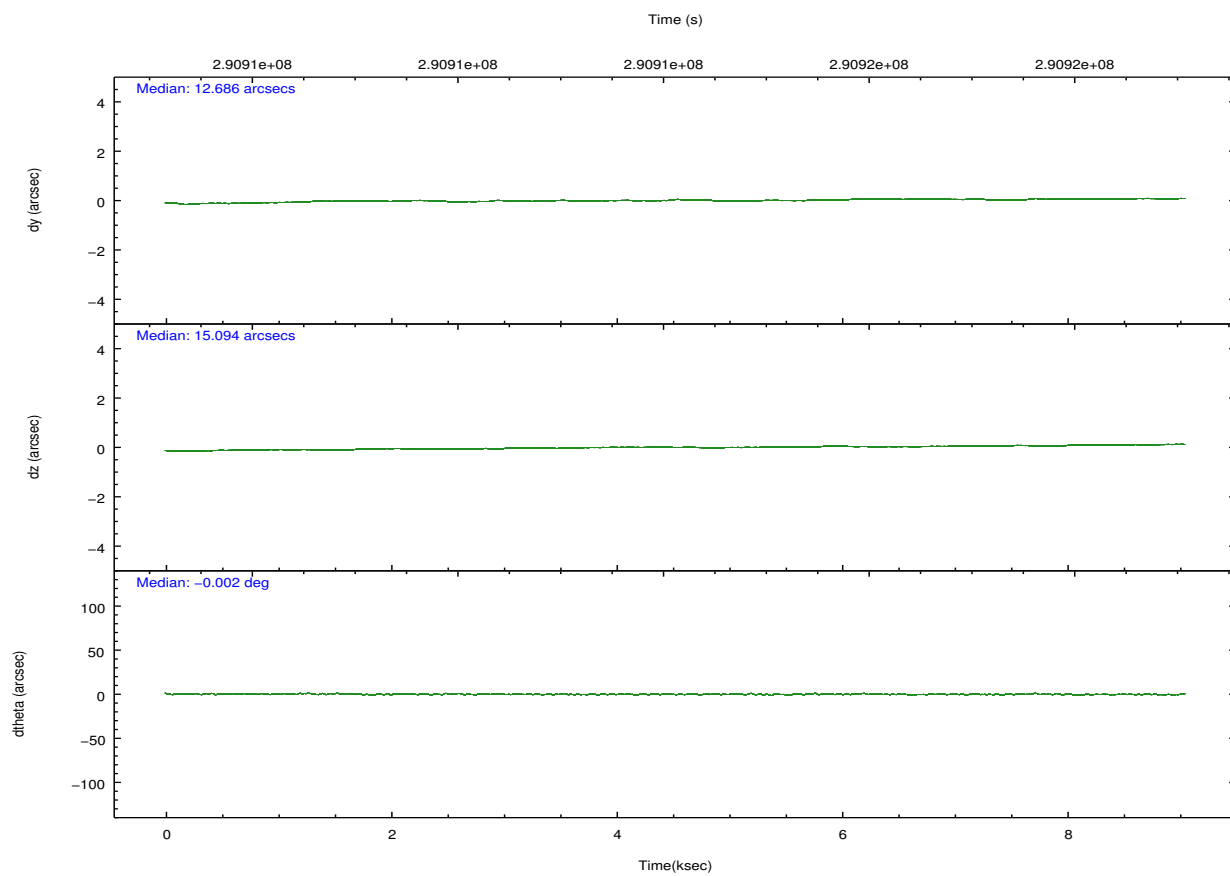
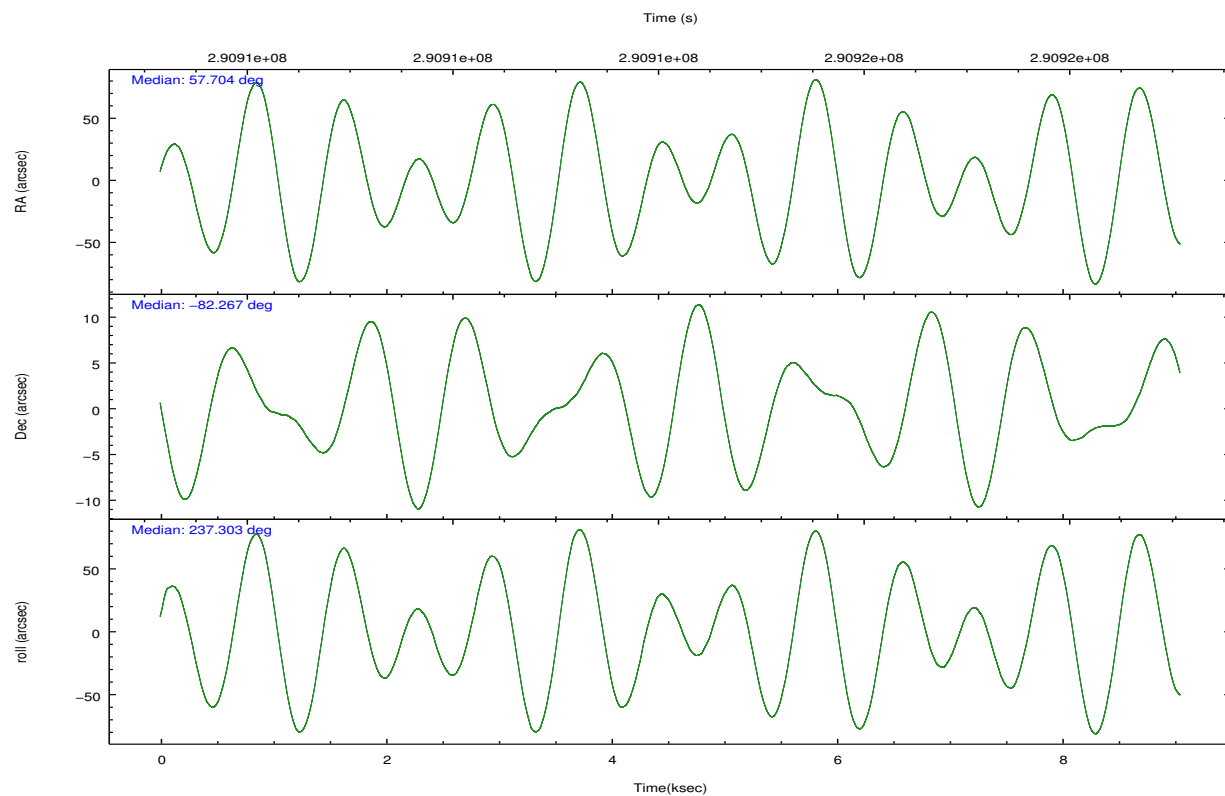


## 2.2 Compared Parameters

Parameter	Planned	Actual	Parameter	Planned	Actual
Instrument	ACIS	ACIS	Obspar format version number	7	7
Detector	ACIS-01236	ACIS-01236	Obspar file type	PREDICTED	ACTUAL
Grating	NONE	NONE	Obspar update status	NONE	UPDATED
Data mode	VFAINT	VFAINT	Number of optional ACIS chips dropped	0	0
Observation mode	POINTING	POINTING	On-chip summing requested	N	N
[deg] Pointing RA	57.713007	57.70441269610422	Subarray requested	NONE	NONE
[deg] Pointing Dec	-82.239650	-82.26715184959612	Alternating exposures requested	N	N
[deg] Pointing Roll	237.113307	237.3134705500094	[s] Primary exposure time	0.000000	3.1
[mm] SIM focus pos	-0.782348	-0.7809083437167272			
[mm] SIM defocus	0	0.001439871863259334			
[mm] SIM translation stage pos	-228.592463	-228.5990329025337			
[mm] SIM translation stage offset	-5	-4.993420100396037			
[s] Observation start time (MET)	290910637.184000	290909129.63326			
Observation start date	2007-03-22T00:29:32	2007-03-22T00:05:29			
[s] Observation end time (MET)	290918637.184000	290920034.60878			
Observation end date	2007-03-22T02:42:52	2007-03-22T03:07:14			
Read mode	TIMED	TIMED			

## 2.3 Aspect



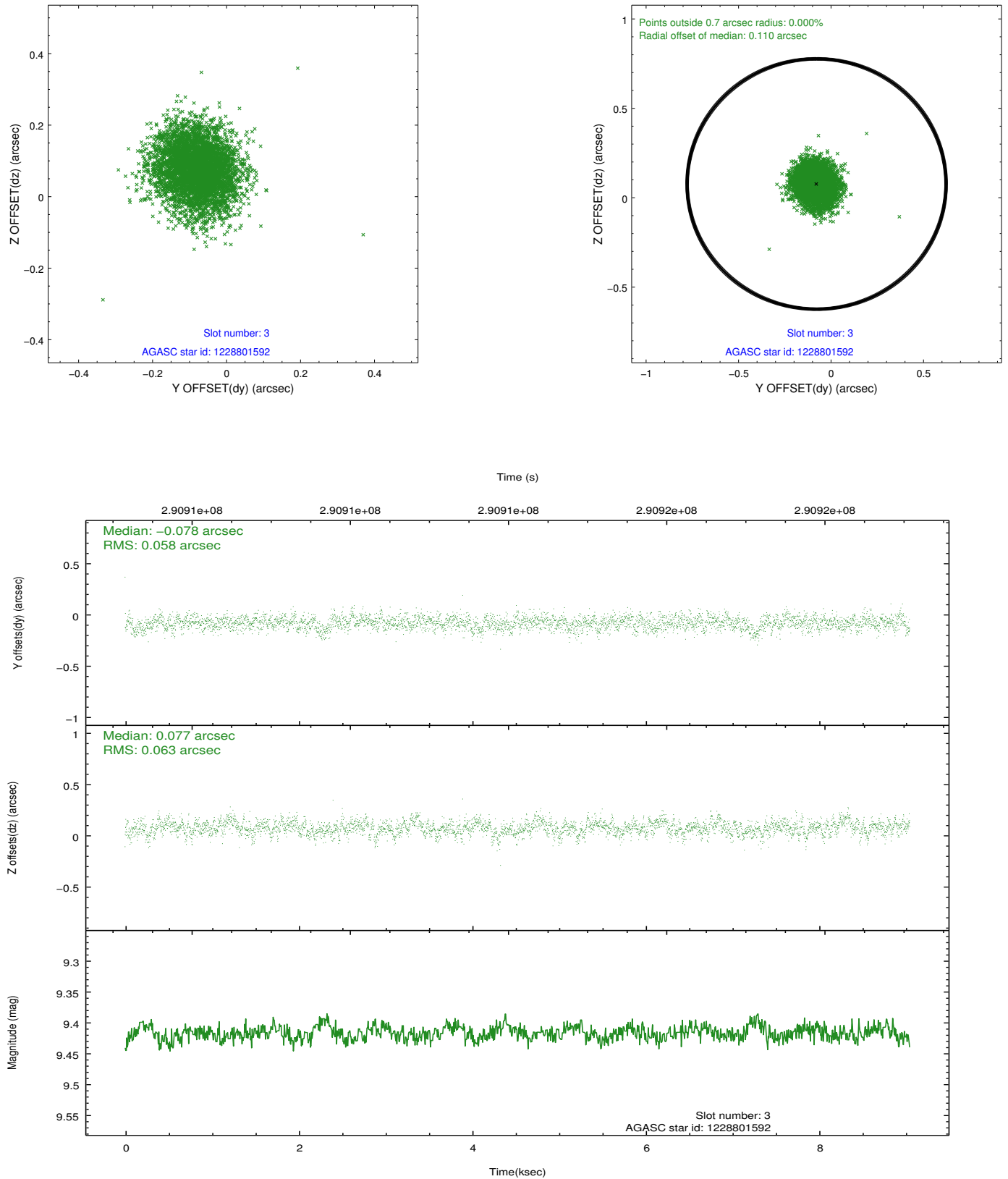


### Slot Statistics

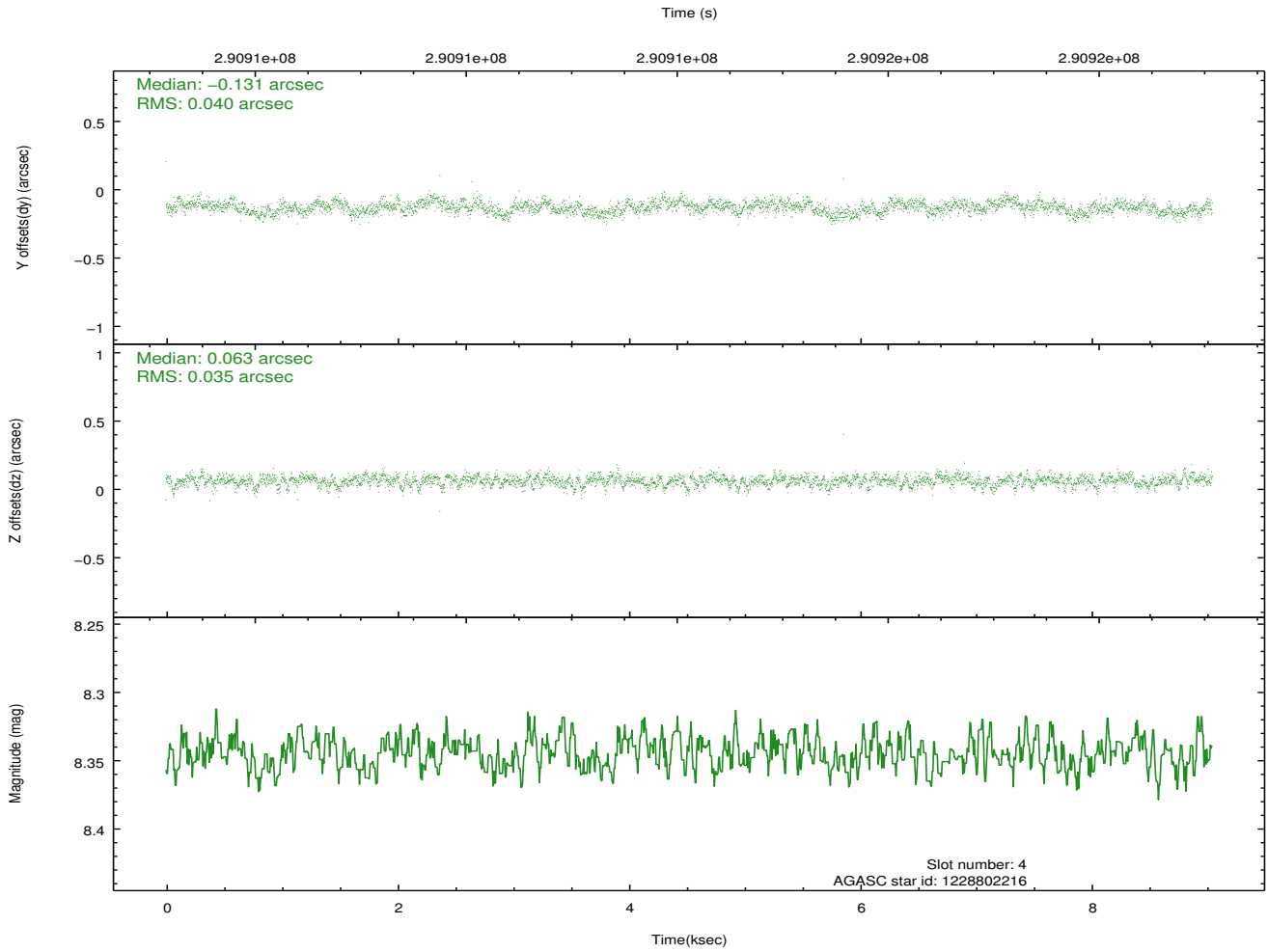
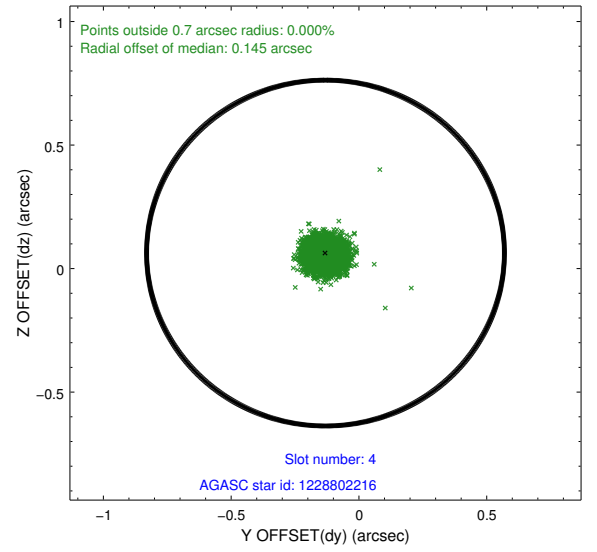
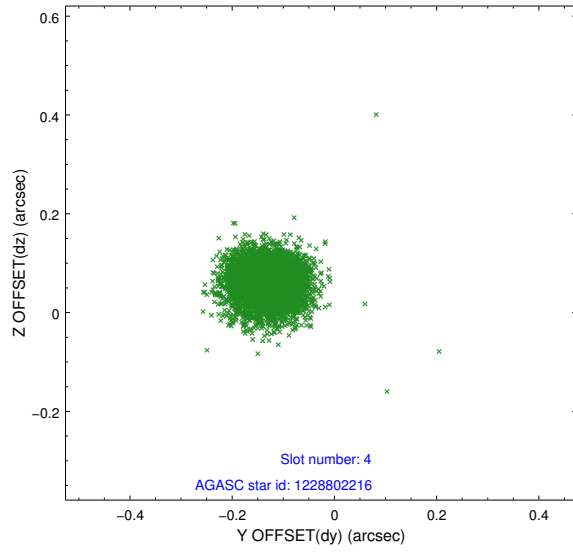
slot	status	id	mag	n_pts	med_dy	med_dz	dr1	dr2	ra	dec	mean_y	mean_z
0	FID	ACIS-I-1	7.22	2207	0.089	-0.038	0.006	0.011	0.000000	0.000000	926.83	-941.20
1	FID	ACIS-I-5	7.22	2208	-0.239	0.085	0.006	0.010	0.000000	0.000000	-1821.27	956.07
2	FID	ACIS-I-6	7.24	2207	0.059	0.024	0.007	0.012	0.000000	0.000000	391.69	1601.19
3	GUIDE	1228801592	9.42	4412	-0.078	0.077	0.091	0.146	53.942588	-82.313958	1259.56	-1345.54
4	GUIDE	1228802216	8.35	4414	-0.131	0.063	0.056	0.091	55.292093	-82.486553	1385.44	-461.05
5	GUIDE	1228802672	8.89	4405	0.064	-0.041	0.097	0.153	59.153370	-82.071578	-888.35	276.63
6	GUIDE	1228802392	8.54	4414	-0.003	0.070	0.112	0.194	50.910422	-82.404833	2413.13	-2285.16
7	GUIDE	1228932720	9.95	4408	0.144	-0.160	0.123	0.195	62.989919	-82.330139	-1003.64	2364.93

## 2.4 Star Slots

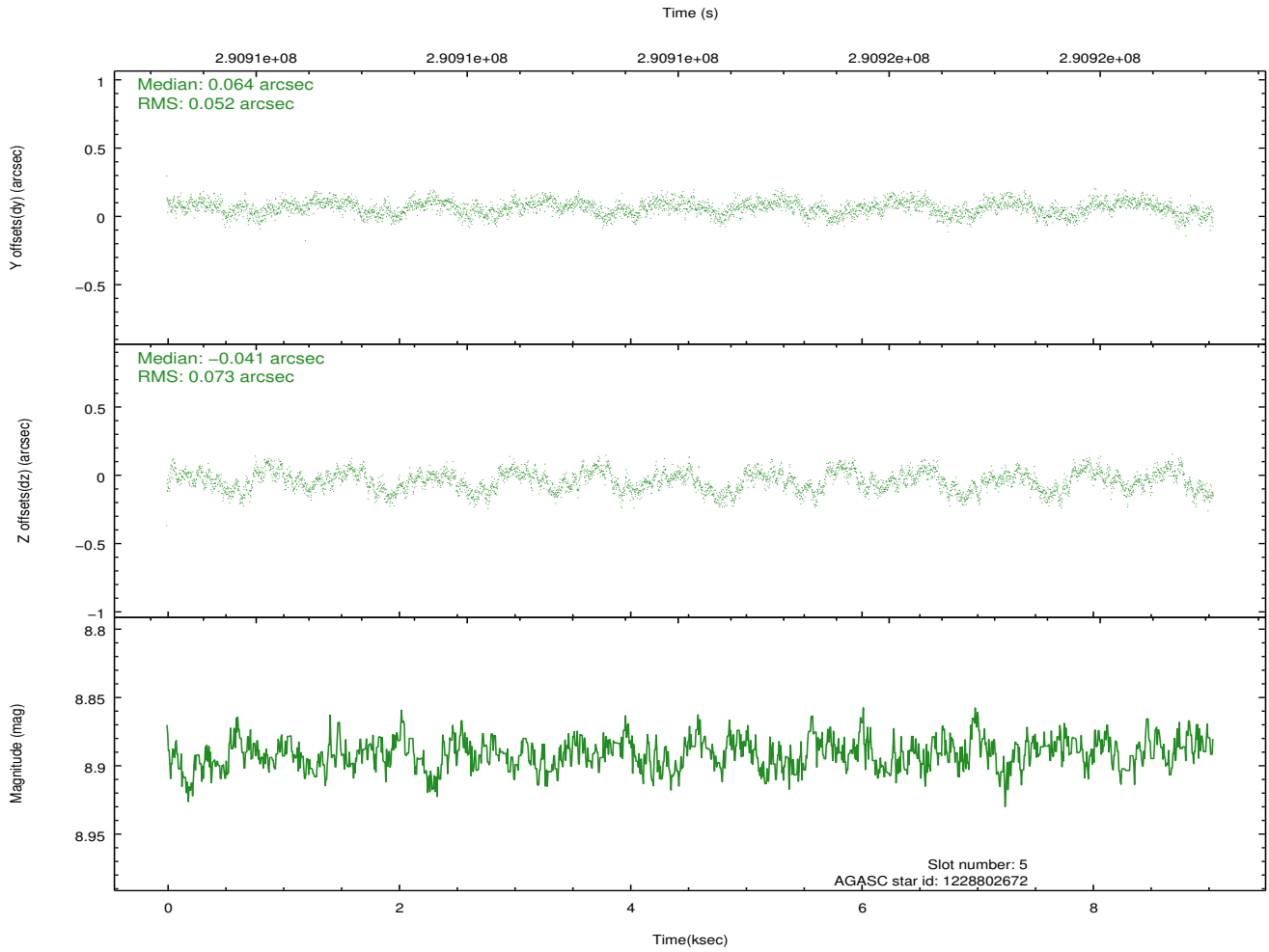
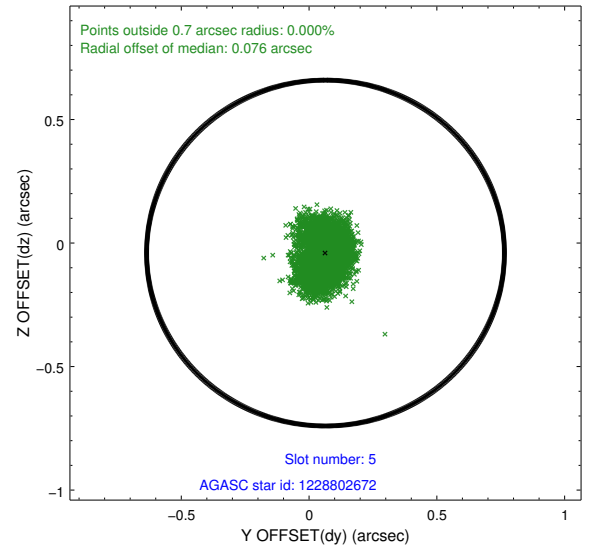
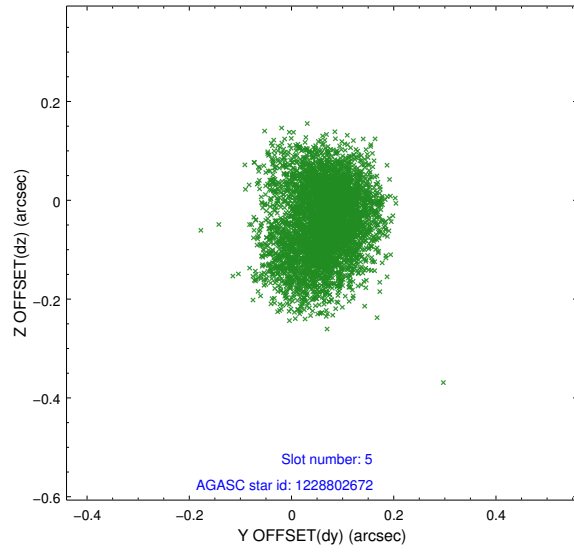
### 2.4.1 Slot 3



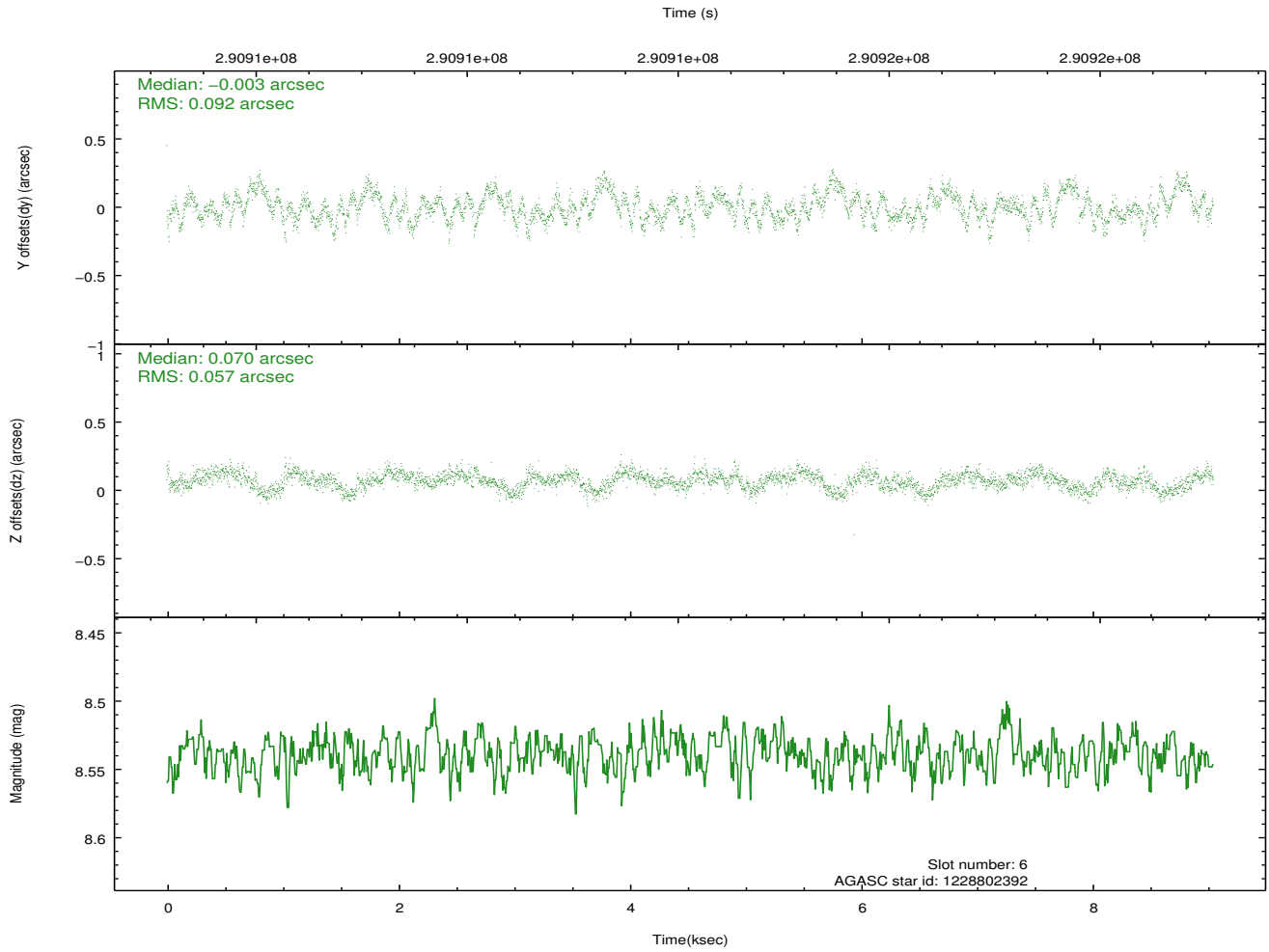
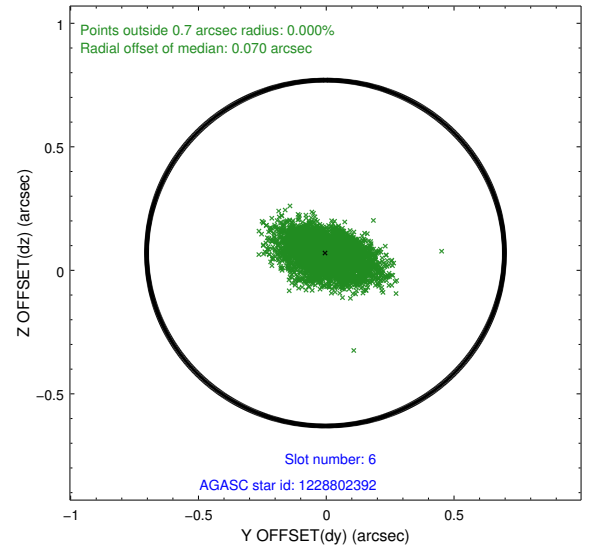
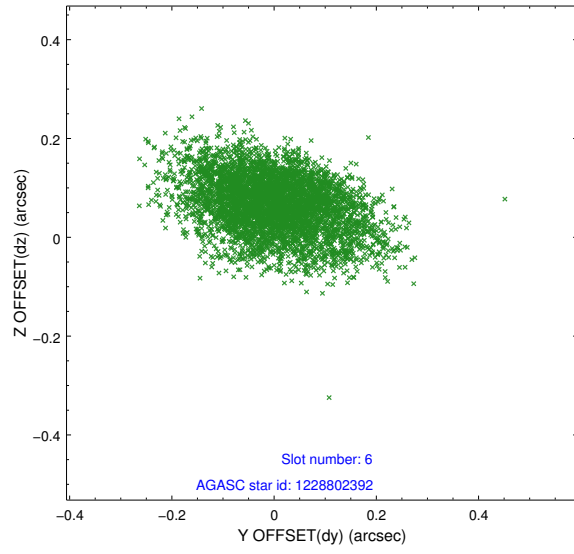
## 2.4.2 Slot 4



### 2.4.3 Slot 5

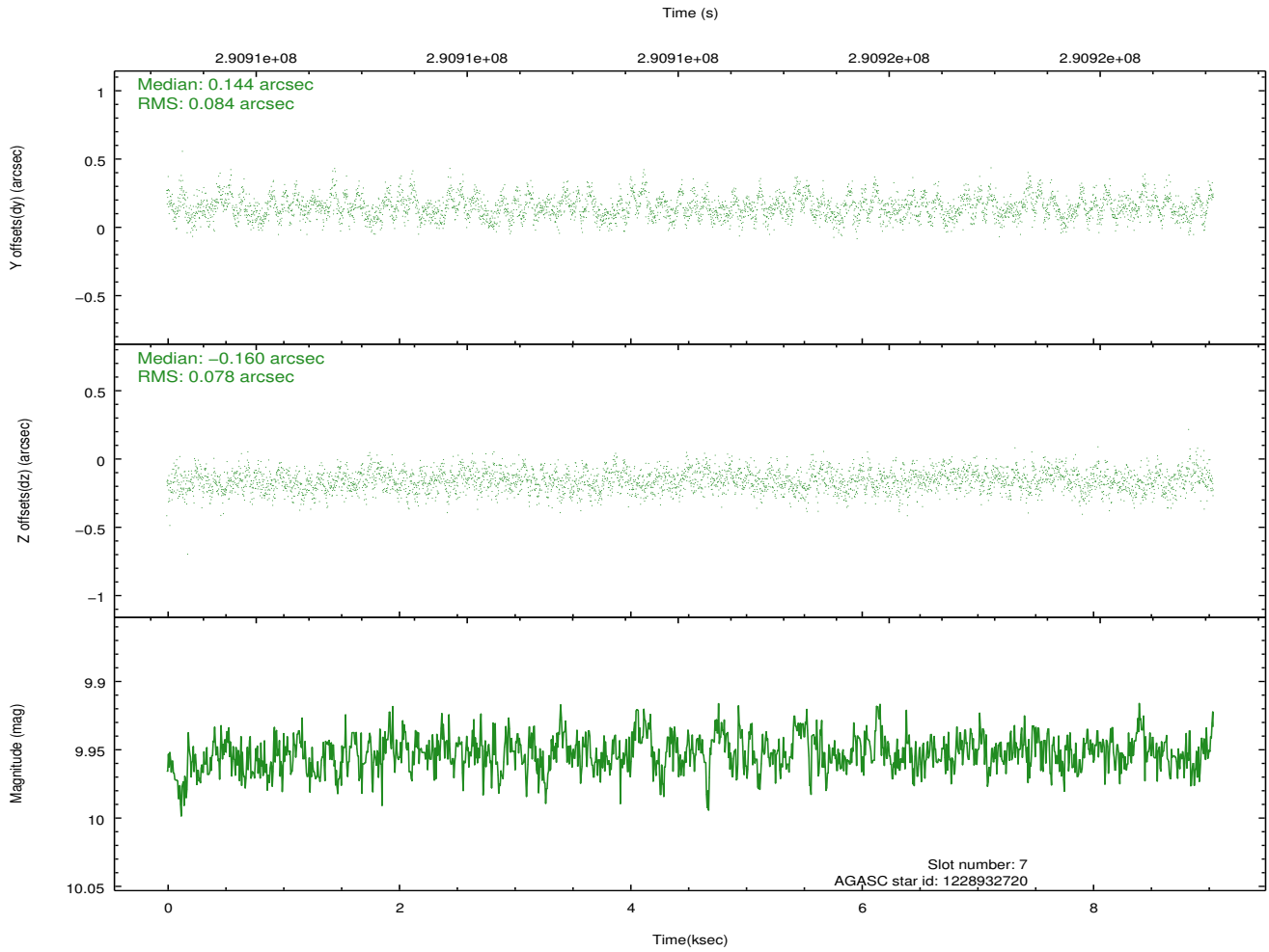
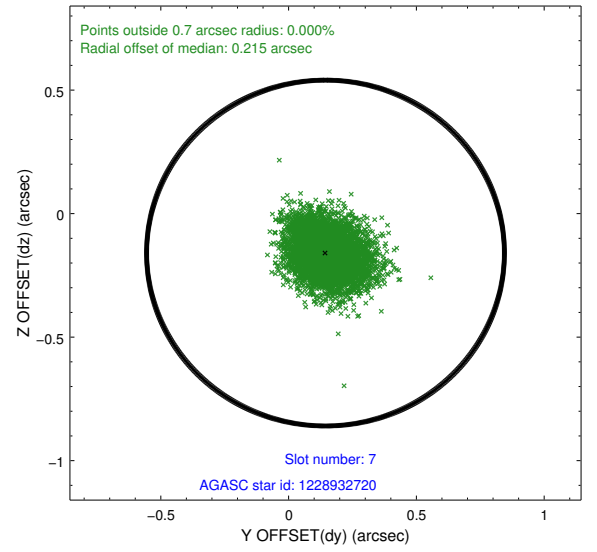
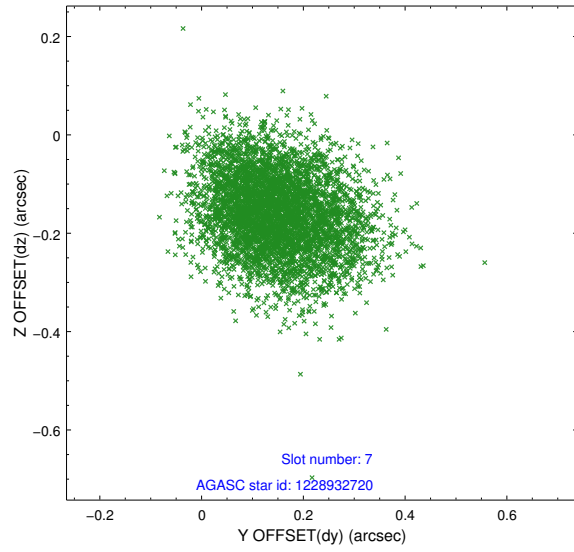


## 2.4.4 Slot 6



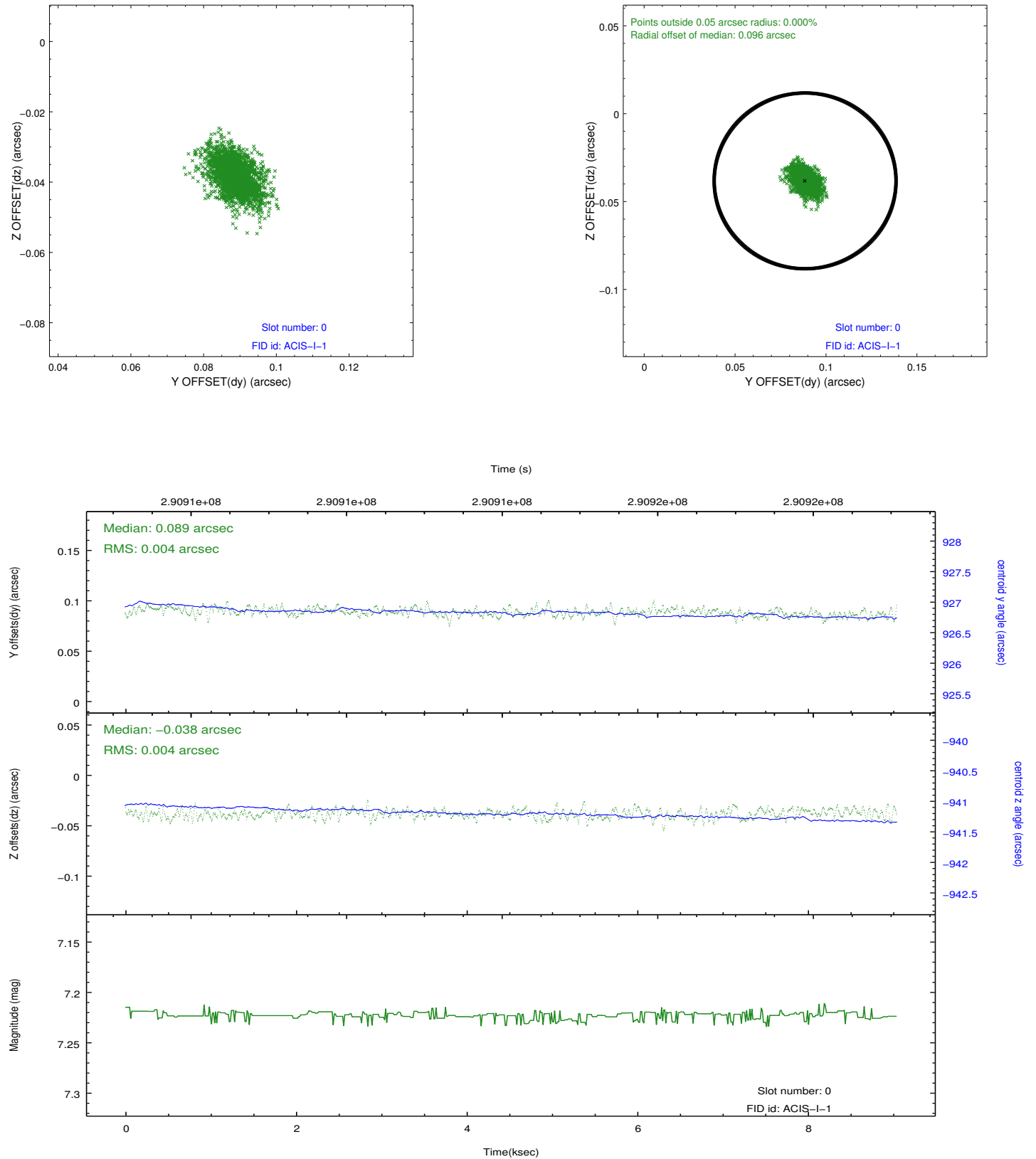


## 2.4.5 Slot 7

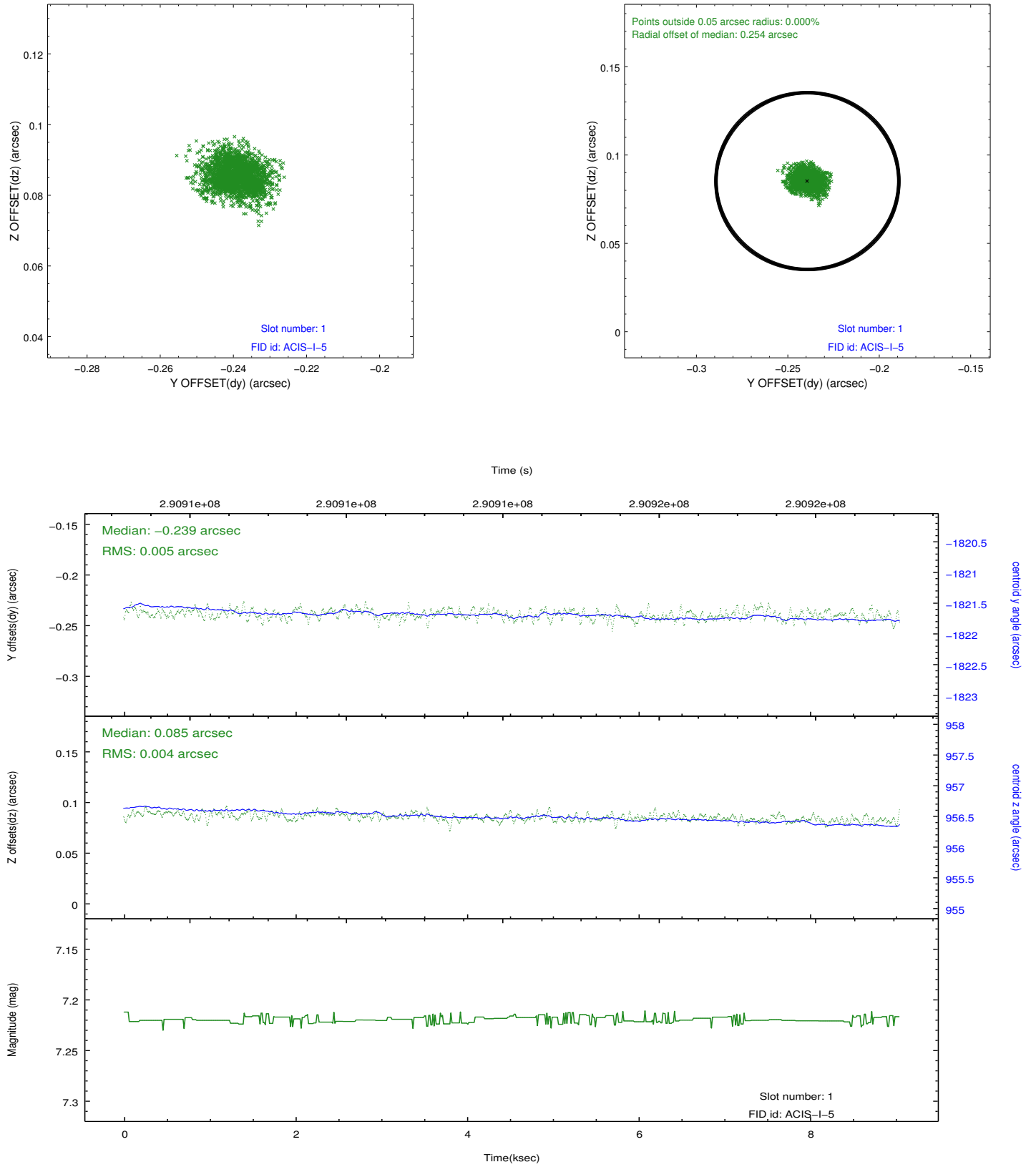


## 2.5 FID Slots

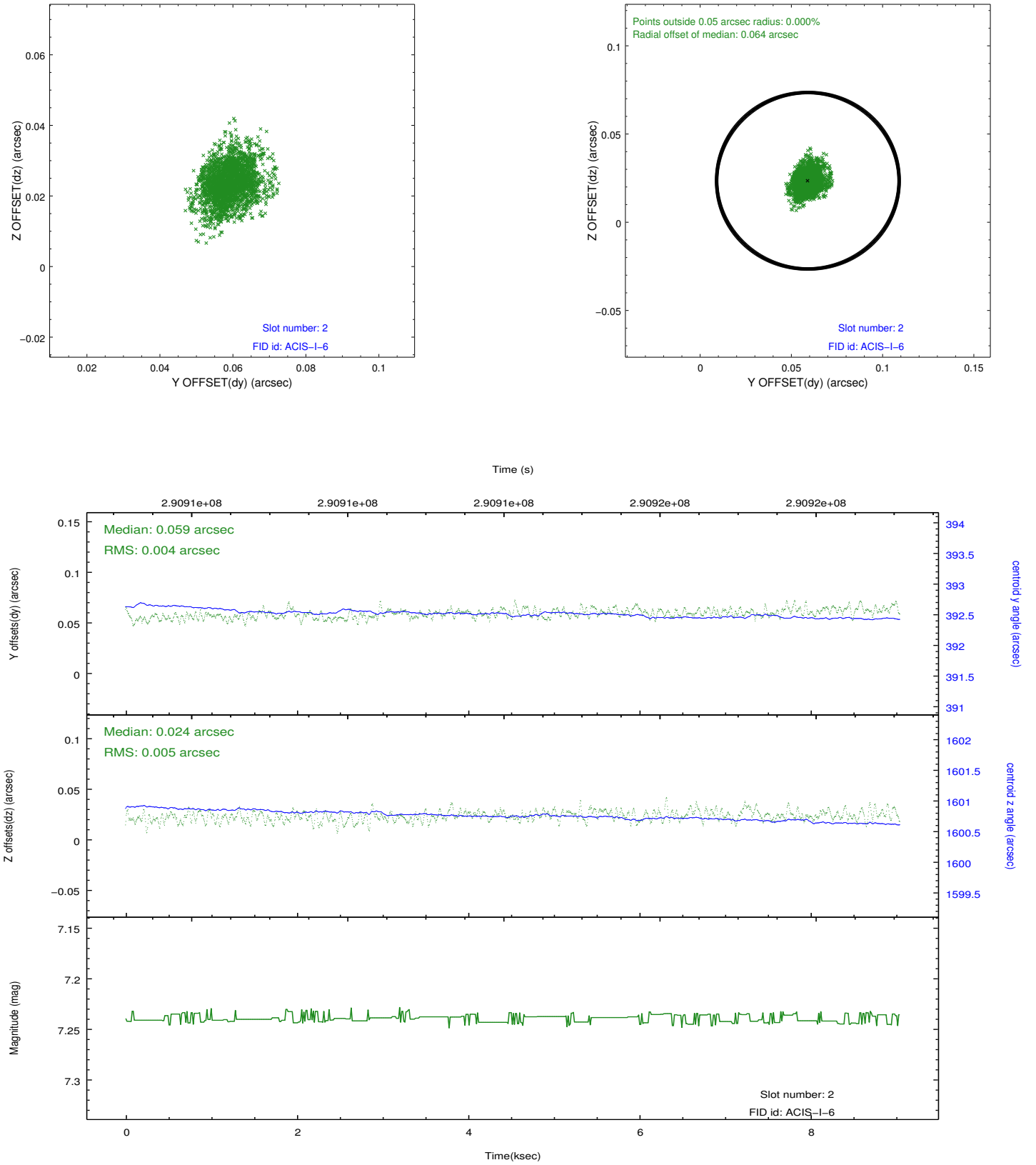
### 2.5.1 Slot 0



## 2.5.2 Slot 1



### 2.5.3 Slot 2



## A Summary

### A.1 Status

V&V Scientist	Jen Lauer
V&V Date (YYYY-MM-DD)	2012.04.23
V&V Edition	1
V&V Disposition and Status	OK
V&V Charge Time	8.04135909

### A.2 Comments