

V&V Reference Report

L2 ASCDS Version : 8.4.4

Observation 7841 - L2 Version 2
Chandra X-Ray Center

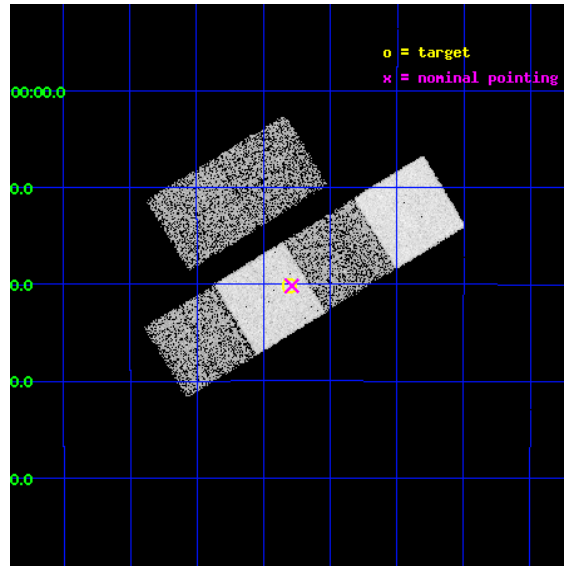
L2 Processing Date : Apr 26 2012

Contents

1	Front	2
2	OBI	3
2.1	OBI	3
2.1.1	Images	3
2.1.2	Bias	3
2.1.3	Parameters	4
2.1.4	Events	4
2.2	Compared Parameters	5
2.3	Aspect	6
2.4	Star Slots	9
2.4.1	Slot 3	9
2.4.2	Slot 4	10
2.4.3	Slot 5	11
2.4.4	Slot 6	12
2.4.5	Slot 7	13
2.5	FID Slots	14
2.5.1	Slot 0	14
2.5.2	Slot 1	15
2.5.3	Slot 2	16
A	Summary	17
A.1	Status	17
A.2	Comments	17

1 Front

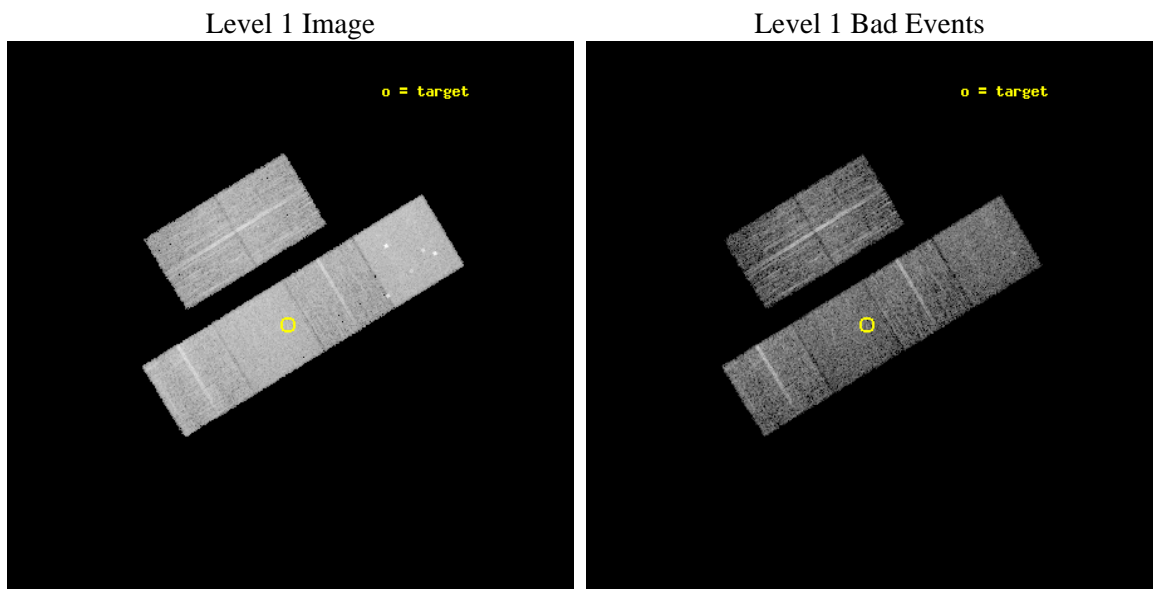
seq_num	701505	Sequence number
obs_id	7841	Observation id
title	Demographics of black holes in the local Universe.	Proposal title
observer	Prof. Smita Mathur	Principal investigator
object	NGC 1325A	Source name
dtcycle	0	
cycle	P	events from which exps? Prim/Second/Both
ra_targ	51.202083	Observer's specified target RA [deg]
dec_targ	-21.336111	Observer's specified target Dec [deg]
ra_nom	51.196824517564	Nominal RA [deg]
dec_nom	-21.336148835408	Nominal Dec [deg]
roll_nom	148.65465049449	Nominal Roll [deg]
revision	2	Processing version of data
ontime	5158.3999808431	Sum of GTIs [s]
livetime	5093.0812142701	Livetime [s]
ontime2	5158.3999808431	Sum of GTIs [s]
ontime3	5158.3999808431	Sum of GTIs [s]
ontime5	5158.3999808431	Sum of GTIs [s]
ontime6	5158.3999808431	Sum of GTIs [s]
ontime7	5158.3999808431	Sum of GTIs [s]
ontime8	5158.3999808431	Sum of GTIs [s]
l2events	81339	Number of level 2 events



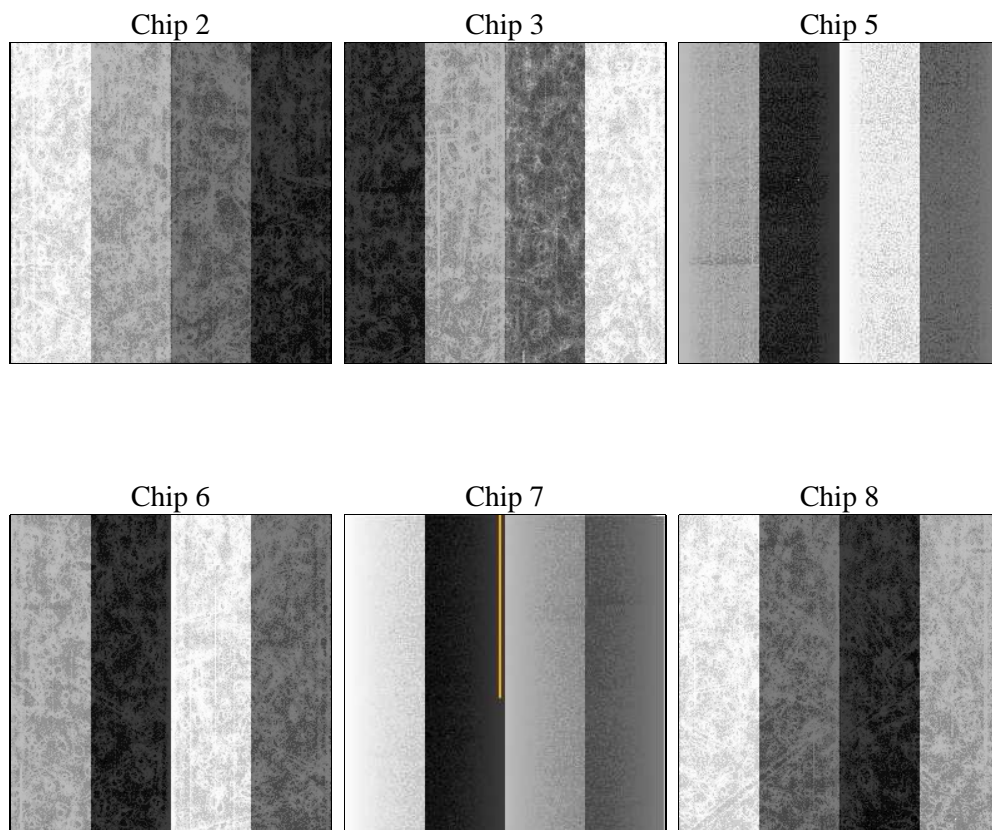
2 OBI

2.1 OBI

2.1.1 Images



2.1.2 Bias



2.1.3 Parameters

obi_num	0	Obi number	sched_exp_time	5000.000000	[s] Scheduled observation exposure time
ascdsver	8.4.4	Processing system revision	ontime	5158.3999808431	Sum of GTIs [s]
caldsver	4.4.9	 	ontime2	5158.3999808431	Sum of GTIs [s]
date	2012-04-26T12:03:02	Date and time of file creation	ontime3	5158.3999808431	Sum of GTIs [s]
revision	2	Processing version of data	ontime5	5158.3999808431	Sum of GTIs [s]
			ontime6	5158.3999808431	Sum of GTIs [s]
			ontime7	5158.3999808431	Sum of GTIs [s]
			ontime8	5158.3999808431	Sum of GTIs [s]
			l1events	357608	Number of level 1 events

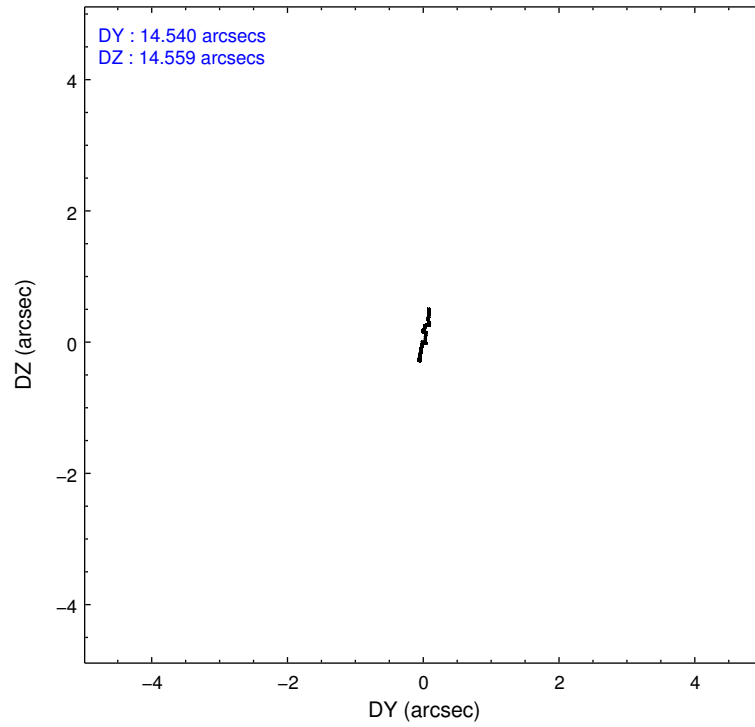
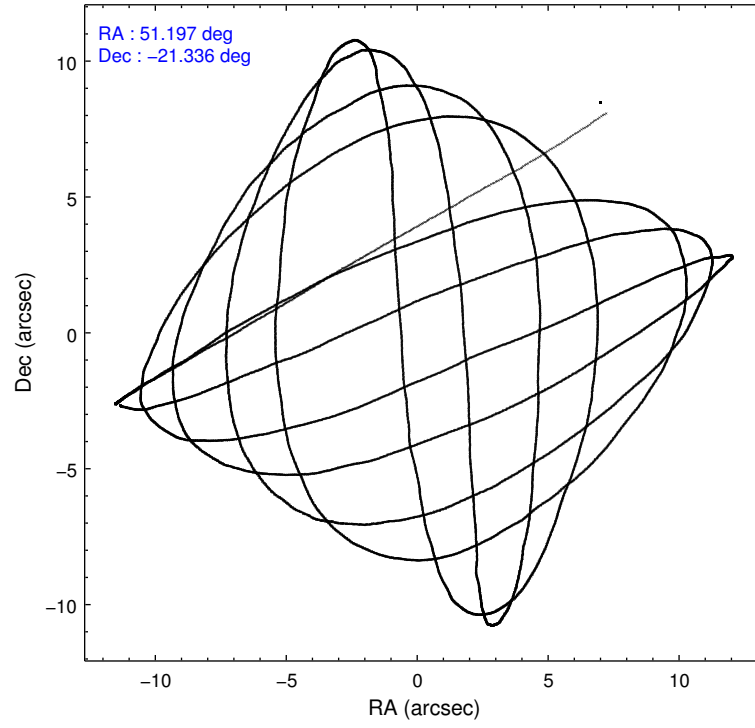
2.1.4 Events

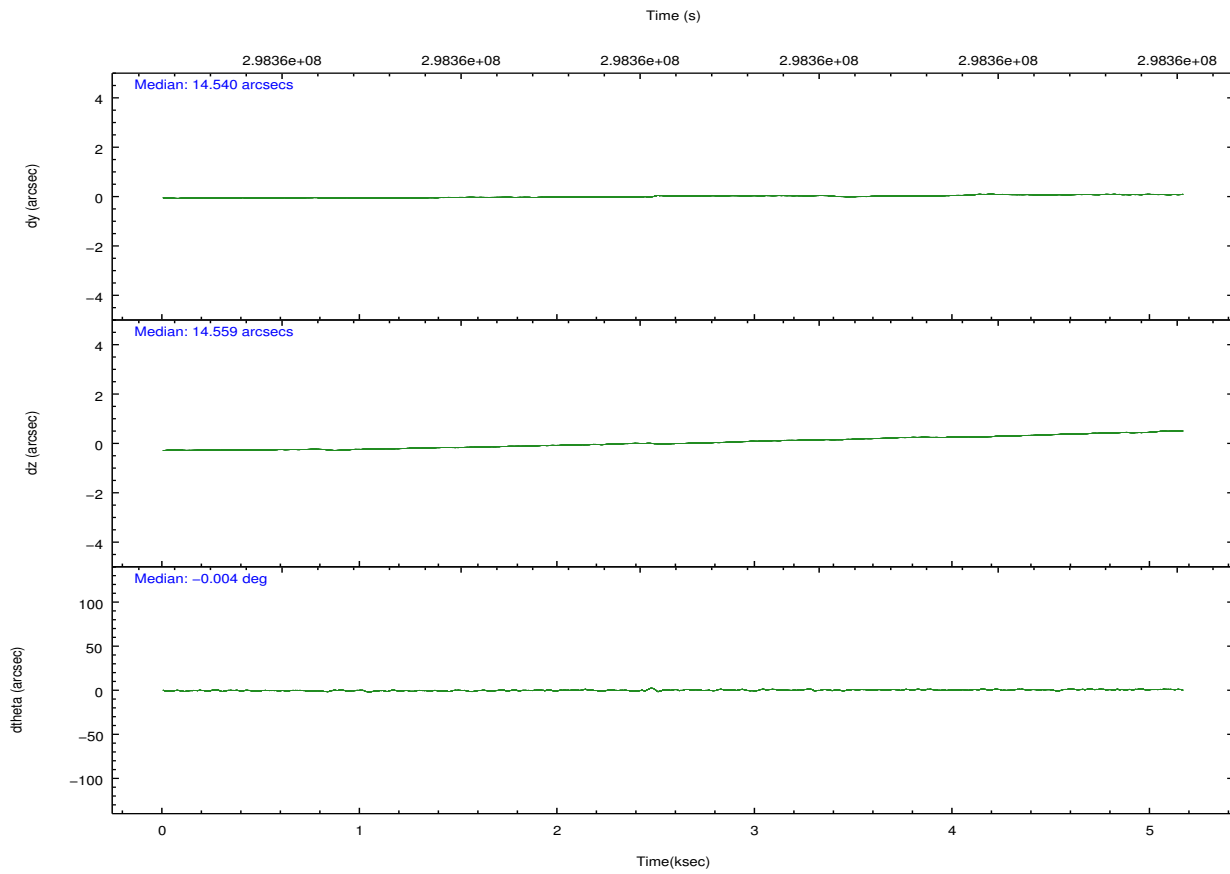
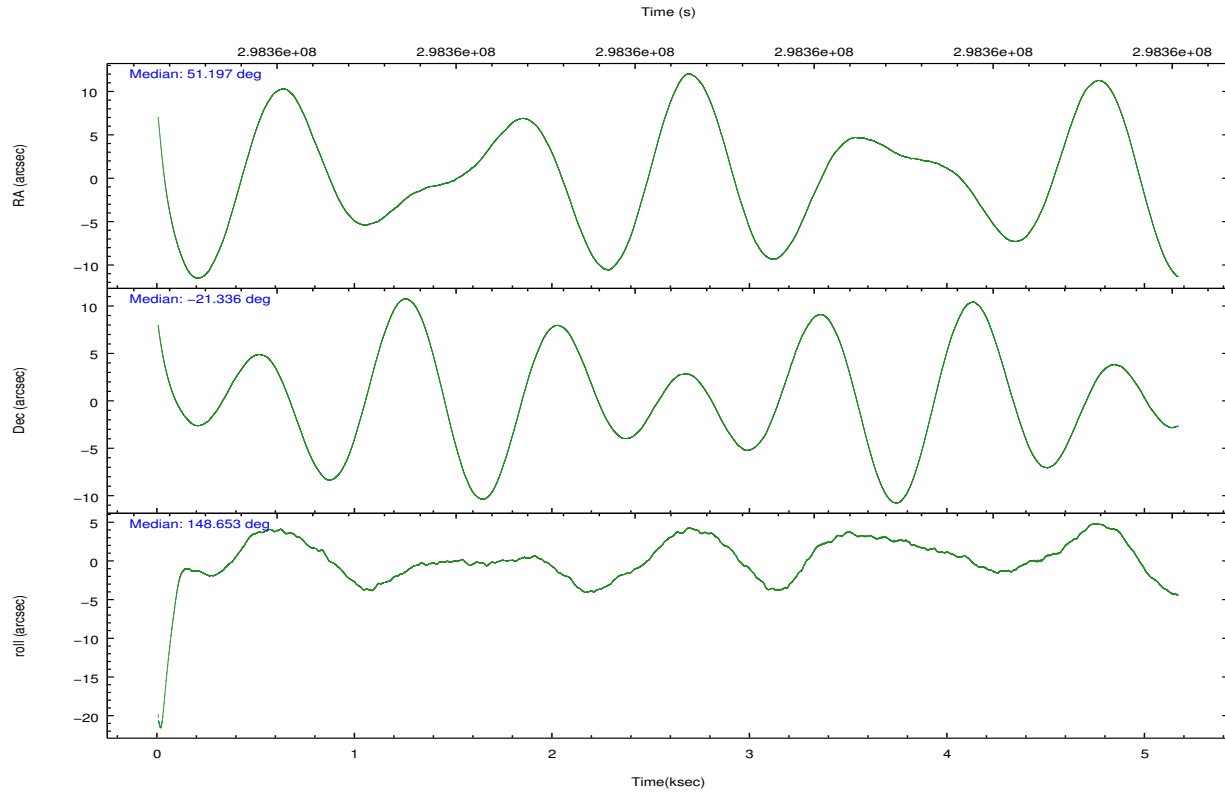
	ccd 2	ccd 3	ccd 5	ccd 6	ccd 7	ccd 8		ccd 2	ccd 3	ccd 5	ccd 6	ccd 7	ccd 8
level 1 events	52291	47538	77761	49326	68395	62297	grade 0 events	2531	2521	4504	2296	2485	4266
rejected events	46511	41834	41218	43402	40351	48739		4%	5%	5%	4%	3%	6%
rejected %	88%	88%	53%	87%	58%	78%	grade 1 events	28	36	172	35	79	54
								0%	0%	0%	0%	0%	0%
							grade 2 events	1290	1121	10897	1333	5790	3134
								2%	2%	14%	2%	8%	5%
							grade 3 events	541	553	1353	597	2380	1416
								1%	1%	1%	1%	3%	2%
							grade 4 events	536	569	1367	583	2433	1299
								1%	1%	1%	1%	3%	2%
							grade 5 events	2041	2279	5486	2294	6429	3064
								3%	4%	7%	4%	9%	4%
							grade 6 events	966	1023	18913	1205	15305	3672
								1%	2%	24%	2%	22%	5%
							grade 7 events	44358	39436	35069	40983	33494	45392
								84%	82%	45%	83%	48%	72%

2.2 Compared Parameters

Parameter	Planned	Actual	Parameter	Planned	Actual
Instrument	ACIS	ACIS	Obspar format version number	7	7
Detector	ACIS-235678	ACIS-235678	Obspar file type	PREDICTED	ACTUAL
Grating	NONE	NONE	Obspar update status	NONE	UPDATED
Data mode	FAINT	FAINT	Number of optional ACIS chips dropped	0	0
Observation mode	POINTING	POINTING	On-chip summing requested	N	N
[deg] Pointing RA	51.226229	51.19682451756368	Subarray requested	NONE	NONE
[deg] Pointing Dec	-21.336401	-21.33614883540832	Alternating exposures requested	N	N
[deg] Pointing Roll	148.508787	148.6546504944863	[s] Primary exposure time	0.000000	3.2
[mm] SIM focus pos	-0.684267	-0.6828225247311905			
[mm] SIM defocus	0	0.001444936568705701			
[mm] SIM translation stage pos	-190.132523	-190.1425803651734			
[mm] SIM translation stage offset	0	0.01005778216563158			
[s] Observation start time (MET)	298354763.184000	298353665.52599			
Observation start date	2007-06-16T04:18:18	2007-06-16T04:01:05			
[s] Observation end time (MET)	298359763.184000	298360891.77634			
Observation end date	2007-06-16T05:41:38	2007-06-16T06:01:31			
Read mode	TIMED	TIMED			

2.3 Aspect



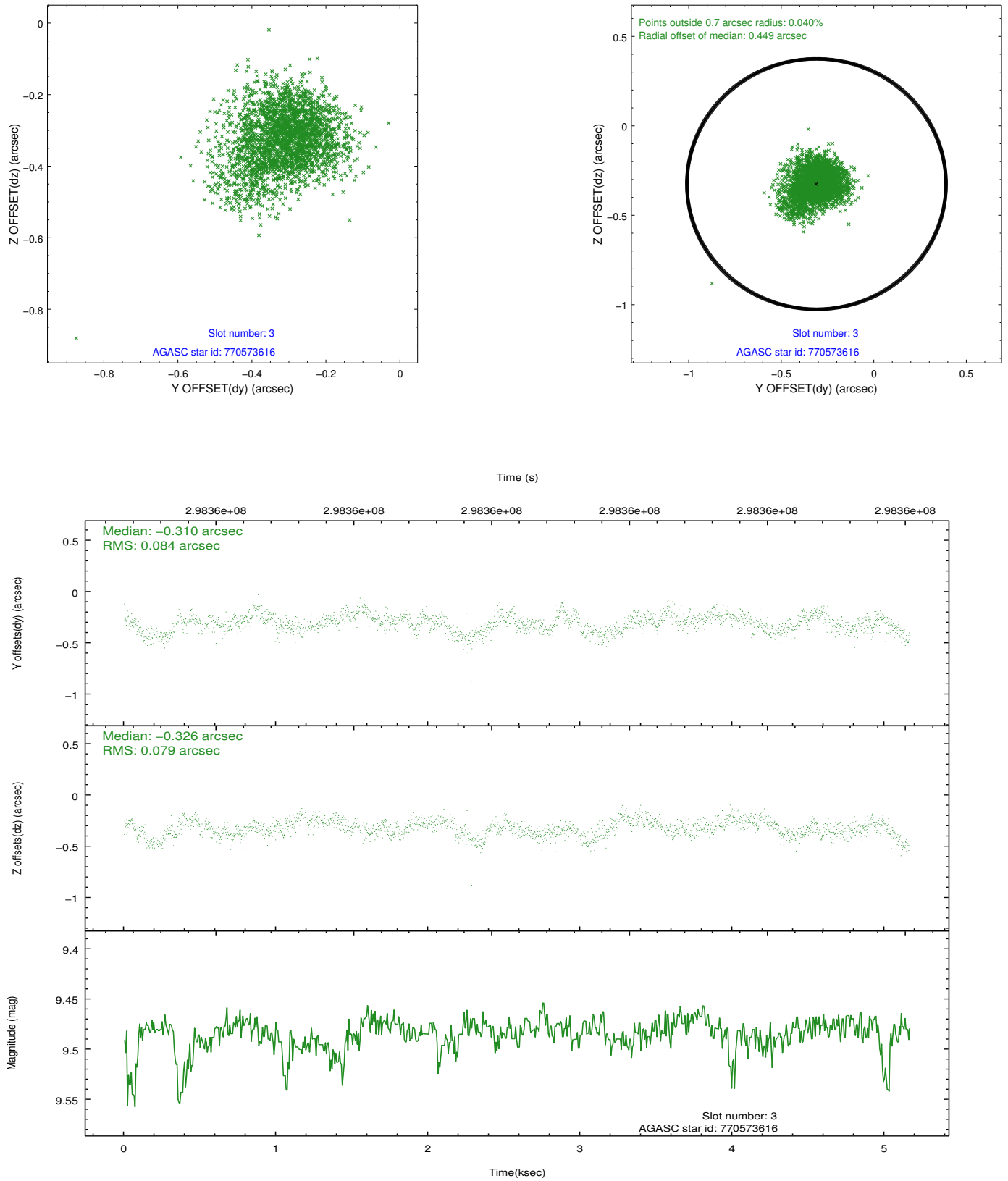


Slot Statistics

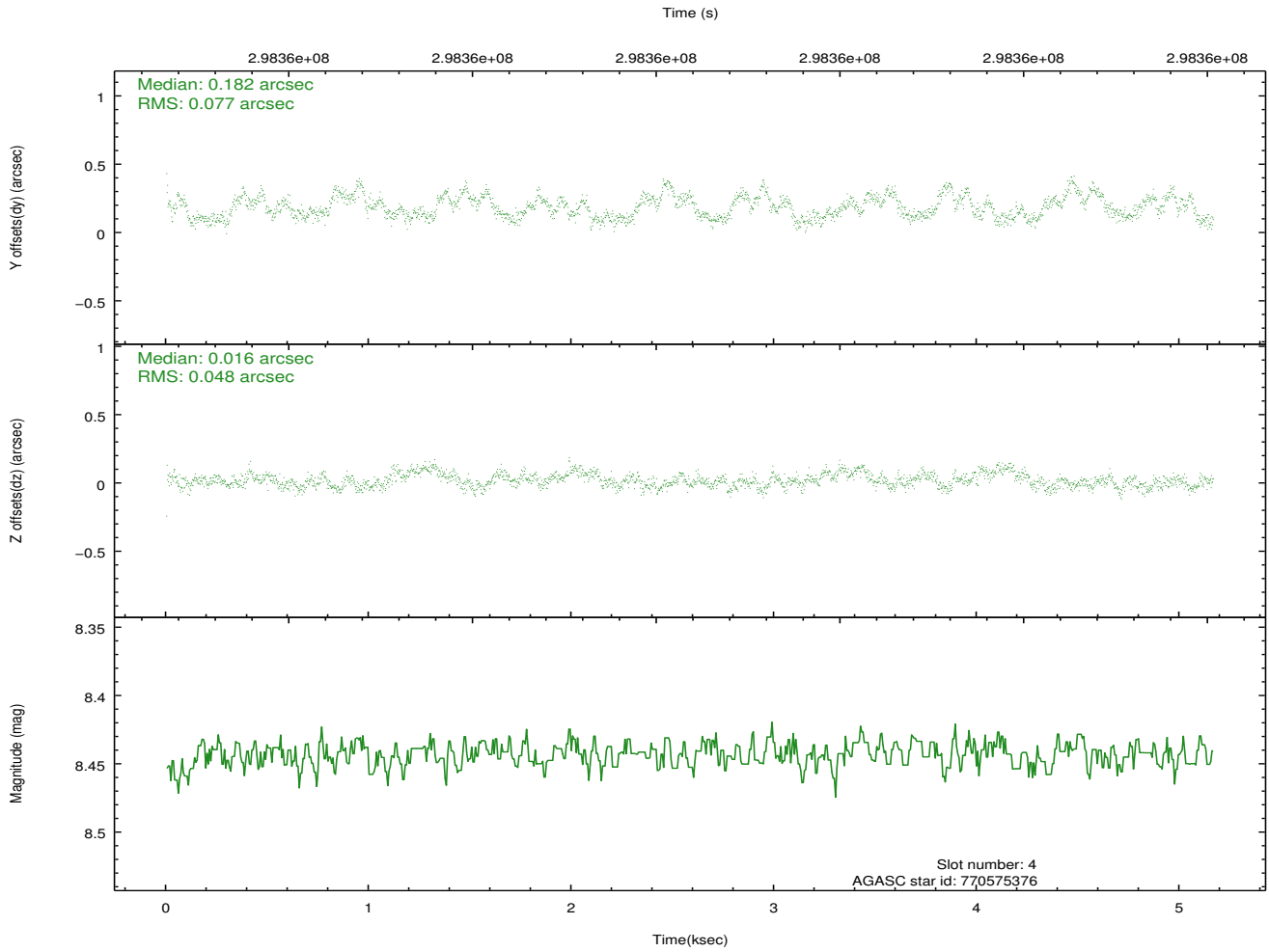
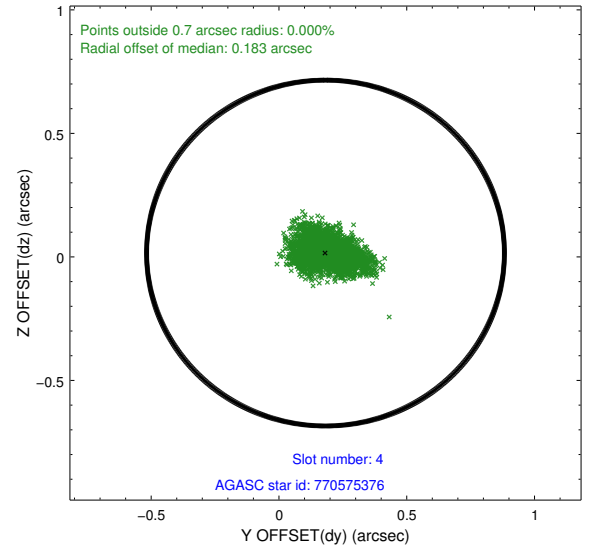
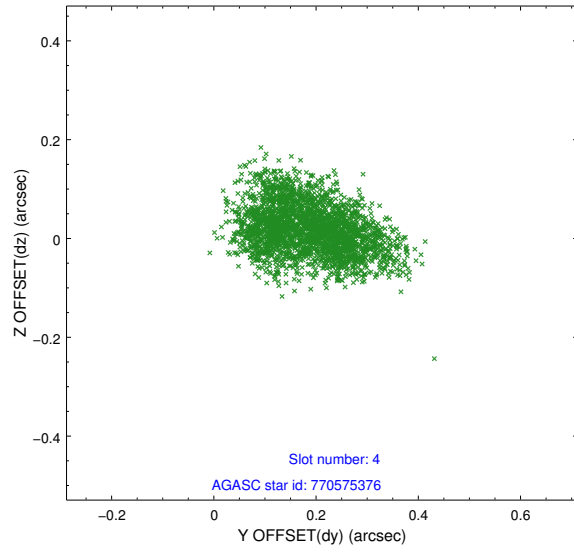
slot	status	id	mag	n_pts	med_dy	med_dz	dr1	dr2	ra	dec	mean_y	mean_z
0	FID	ACIS-S-1	7.18	1260	0.088	0.006	0.012	0.027	0.000000	0.000000	928.58	-1731.56
1	FID	ACIS-S-2	7.09	1260	-0.124	-0.051	0.007	0.012	0.000000	0.000000	-766.89	-1737.34
2	FID	ACIS-S-6	7.33	1260	0.016	0.051	0.010	0.022	0.000000	0.000000	393.69	808.62
3	GUIDE	770573616	9.48	2498	-0.310	-0.326	0.120	0.200	51.694921	-21.667566	-1961.54	199.19
4	GUIDE	770575376	8.44	2519	0.182	0.016	0.098	0.155	51.490218	-22.063612	-2120.23	1771.78
5	GUIDE	770575632	10.29	2514	0.134	0.222	0.188	0.308	51.943167	-21.397414	-2167.58	-1062.43
6	GUIDE	770581976	9.27	2518	-0.061	-0.038	0.097	0.152	50.691202	-21.089617	1993.39	183.58
7	GUIDE	770446120	9.90	2514	0.072	0.103	0.159	0.258	50.291160	-21.553330	2257.76	2309.30

2.4 Star Slots

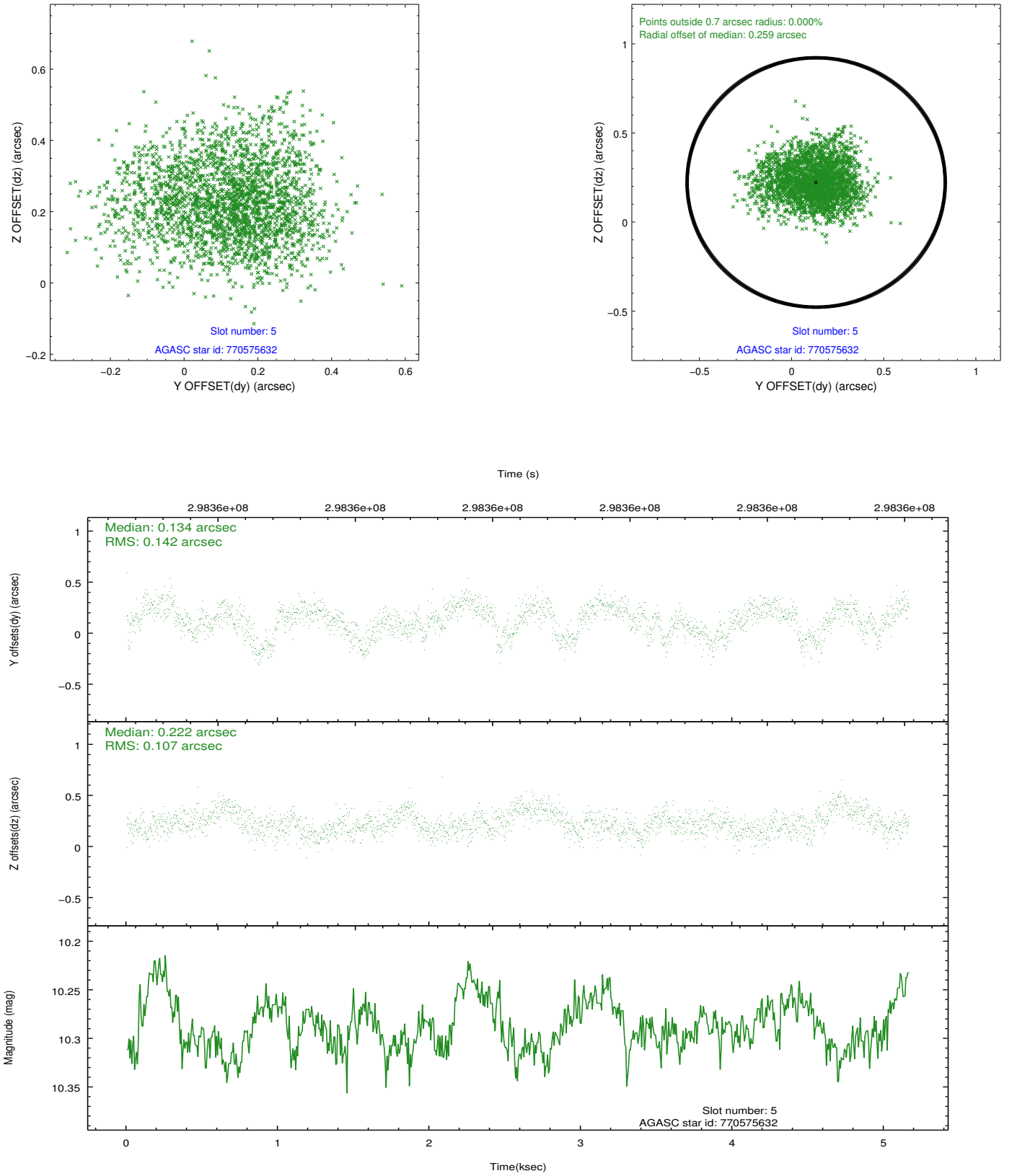
2.4.1 Slot 3



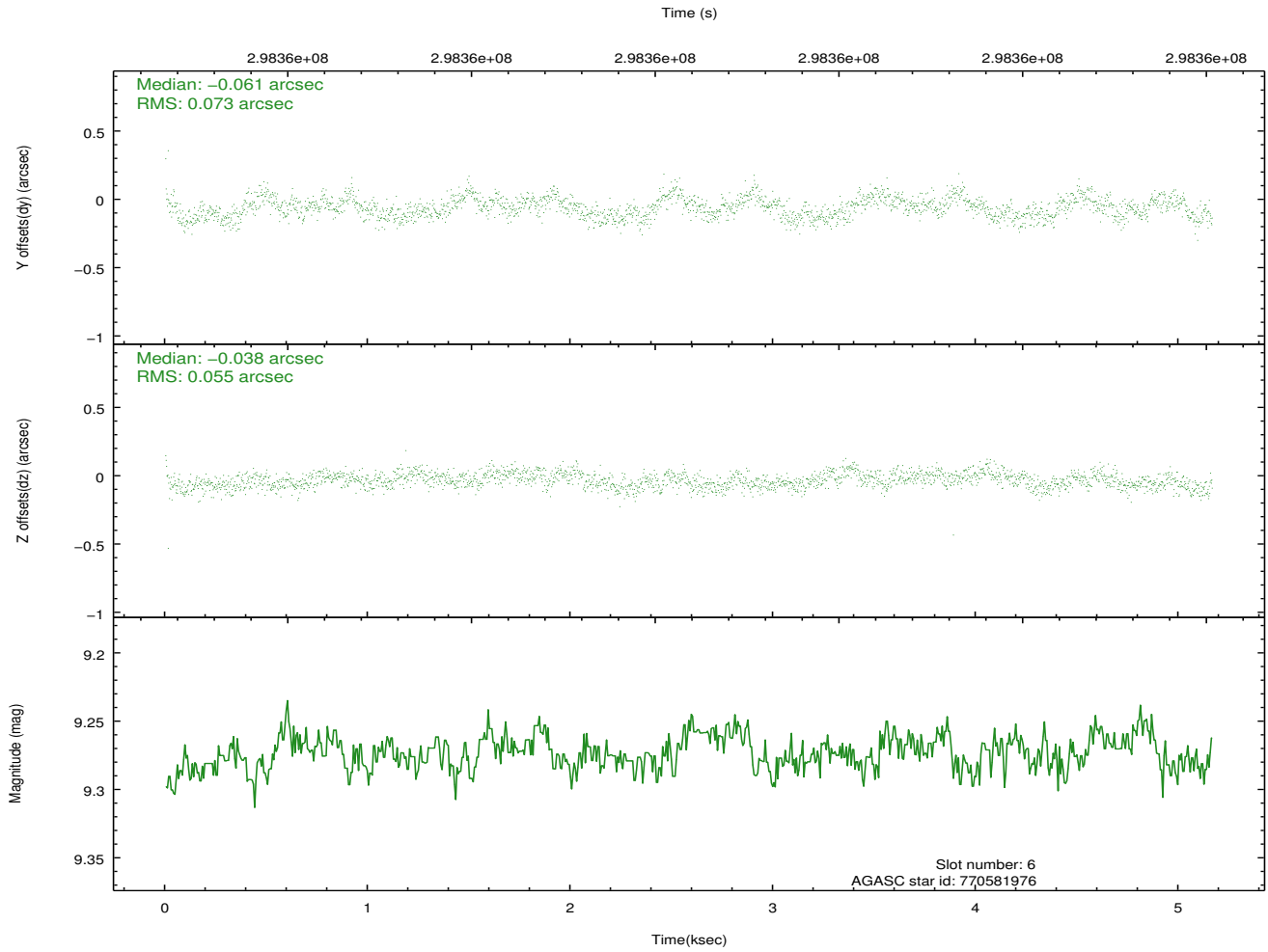
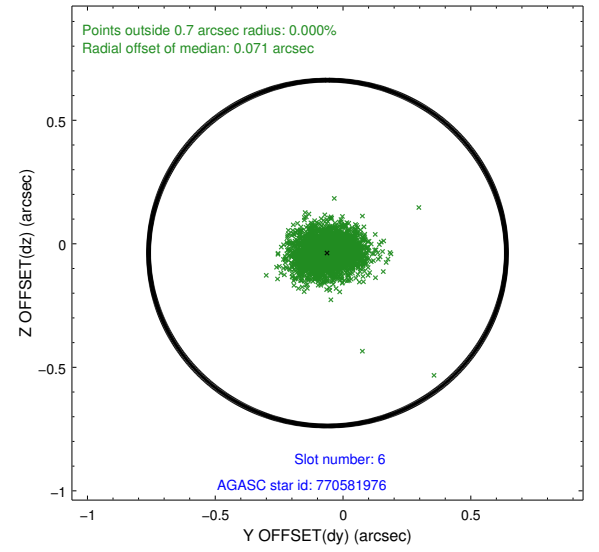
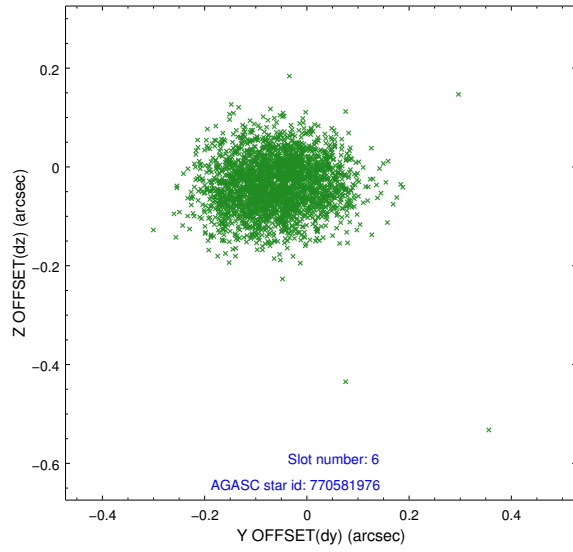
2.4.2 Slot 4



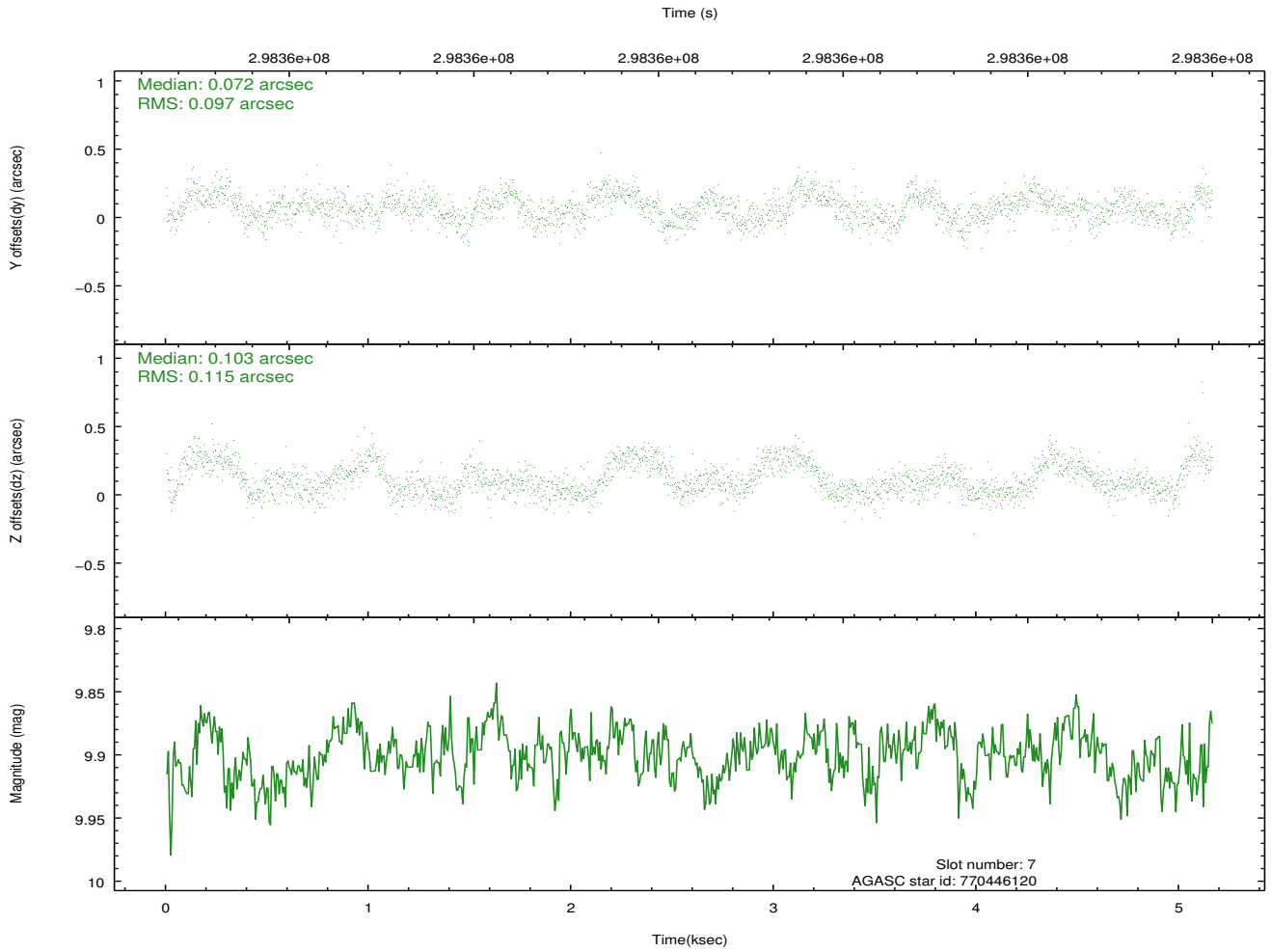
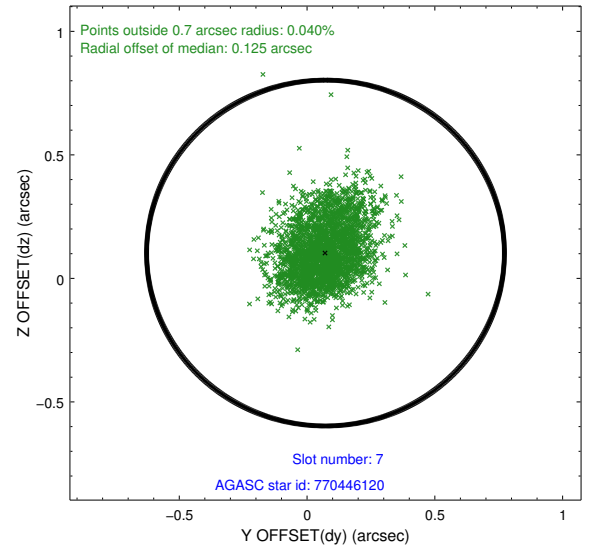
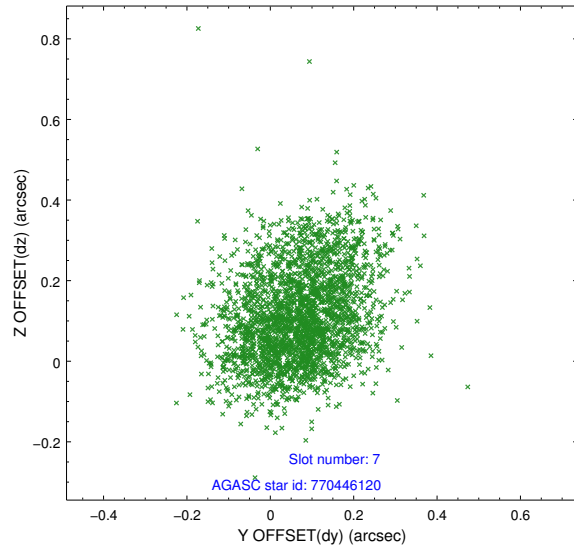
2.4.3 Slot 5



2.4.4 Slot 6

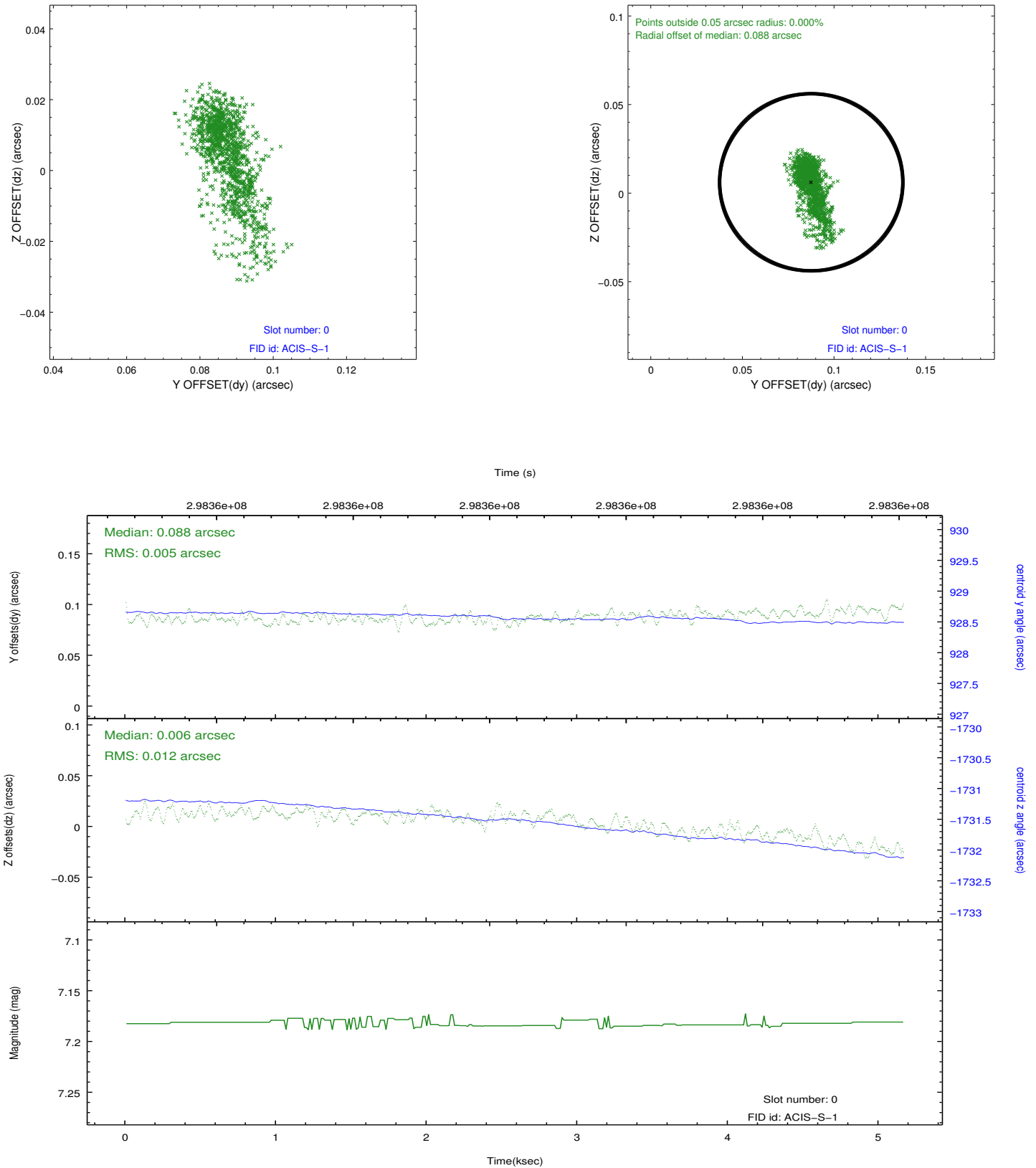


2.4.5 Slot 7

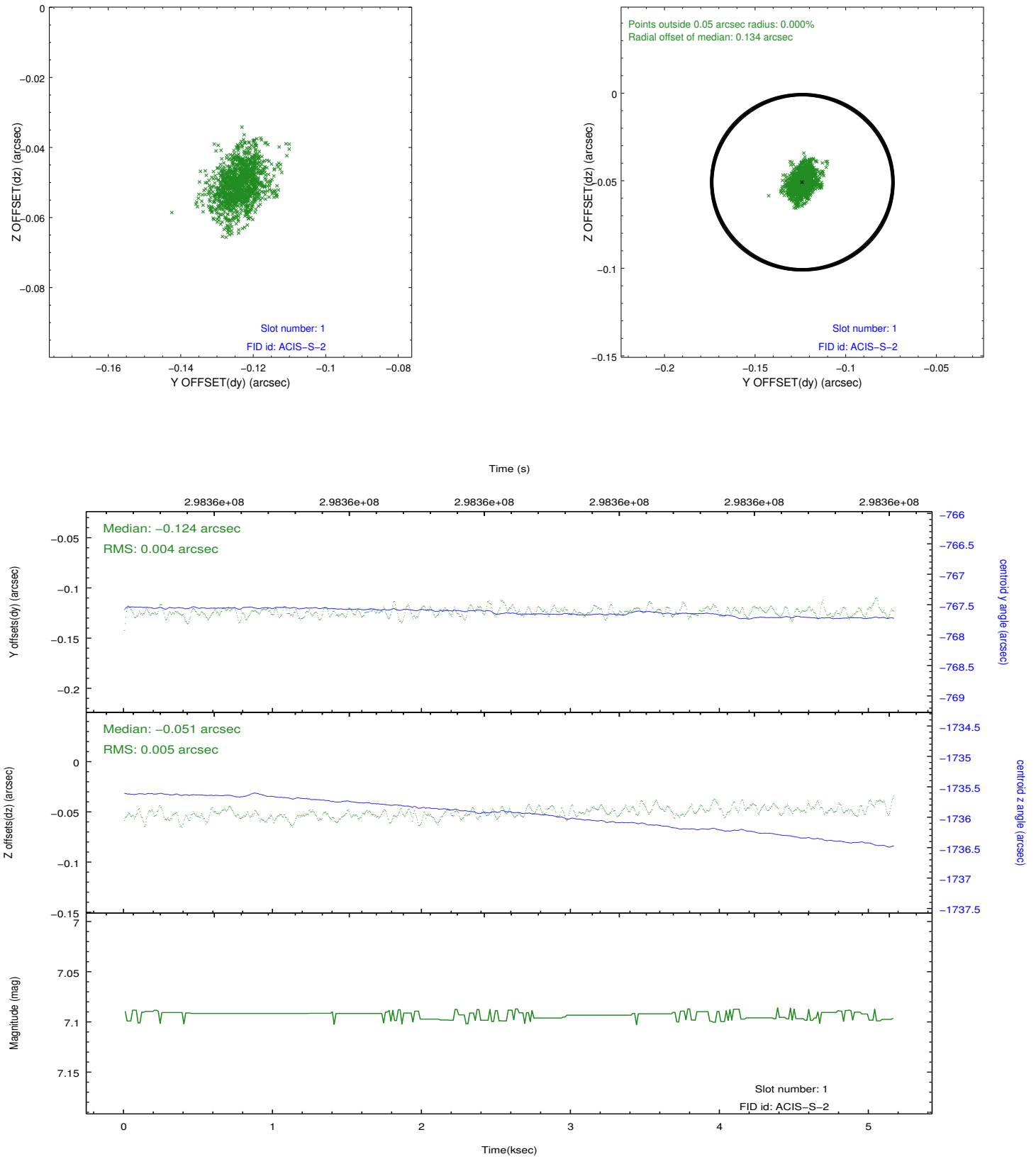


2.5 FID Slots

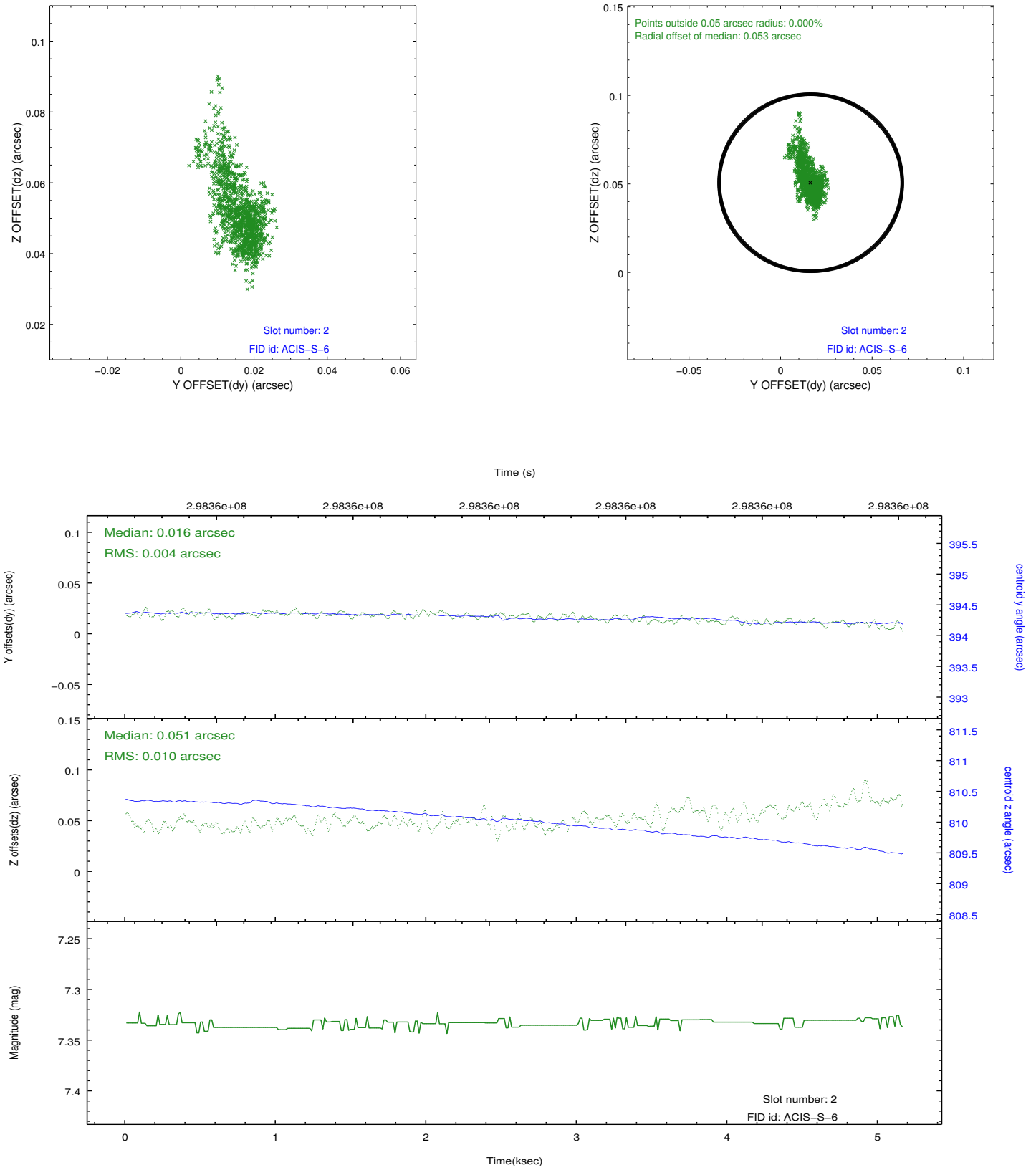
2.5.1 Slot 0



2.5.2 Slot 1



2.5.3 Slot 2



A Summary

A.1 Status

V&V Scientist	Jen Lauer
V&V Date (YYYY-MM-DD)	2012.04.26
V&V Edition	1
V&V Disposition and Status	OK
V&V Charge Time	5.15839998

A.2 Comments