

V&V Reference Report

L2 ASCDS Version : 8.4.4

Observation 7838 - L2 Version 2
Chandra X-Ray Center

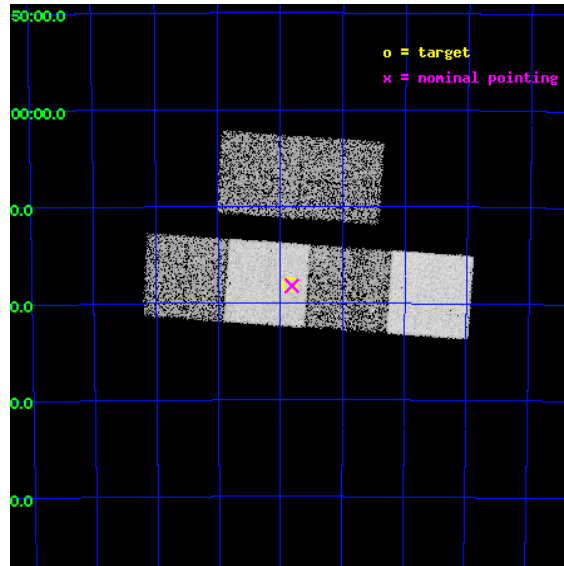
L2 Processing Date : Apr 26 2012

Contents

1	Front	2
2	OBI	3
2.1	OBI	3
2.1.1	Images	3
2.1.2	Bias	3
2.1.3	Parameters	4
2.1.4	Events	4
2.2	Compared Parameters	5
2.3	Aspect	6
2.4	Star Slots	9
2.4.1	Slot 3	9
2.4.2	Slot 4	10
2.4.3	Slot 5	11
2.4.4	Slot 6	12
2.4.5	Slot 7	13
2.5	FID Slots	14
2.5.1	Slot 0	14
2.5.2	Slot 1	15
2.5.3	Slot 2	16
A	Summary	17
A.1	Status	17
A.2	Comments	17

1 Front

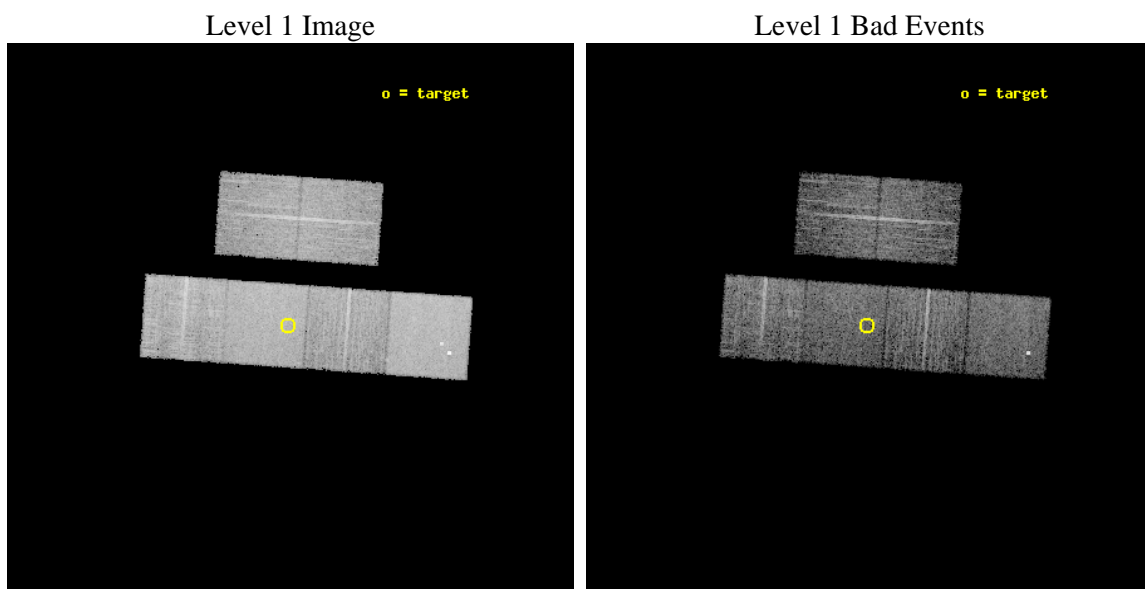
seq_num	701502	Sequence number
obs_id	7838	Observation id
title	Demographics of black holes in the local Universe.	Proposal title
observer	Prof. Smita Mathur	Principal investigator
object	NGC 2082	Source name
dtcycle	0	
cycle	P	events from which exps? Prim/Second/Both
ra_targ	85.462917	Observer's specified target RA [deg]
dec_targ	-64.301139	Observer's specified target Dec [deg]
ra_nom	85.453744450662	Nominal RA [deg]
dec_nom	-64.3039382112	Nominal Dec [deg]
roll_nom	184.03058187203	Nominal Roll [deg]
revision	2	Processing version of data
ontime	5129.5999809504	Sum of GTIs [s]
livetime	5064.6458973173	Livetime [s]
ontime2	5129.5999809504	Sum of GTIs [s]
ontime3	5129.5999809504	Sum of GTIs [s]
ontime5	5129.5999809504	Sum of GTIs [s]
ontime6	5129.5999809504	Sum of GTIs [s]
ontime7	5129.5999809504	Sum of GTIs [s]
ontime8	5126.3590105772	Sum of GTIs [s]
l2events	83216	Number of level 2 events



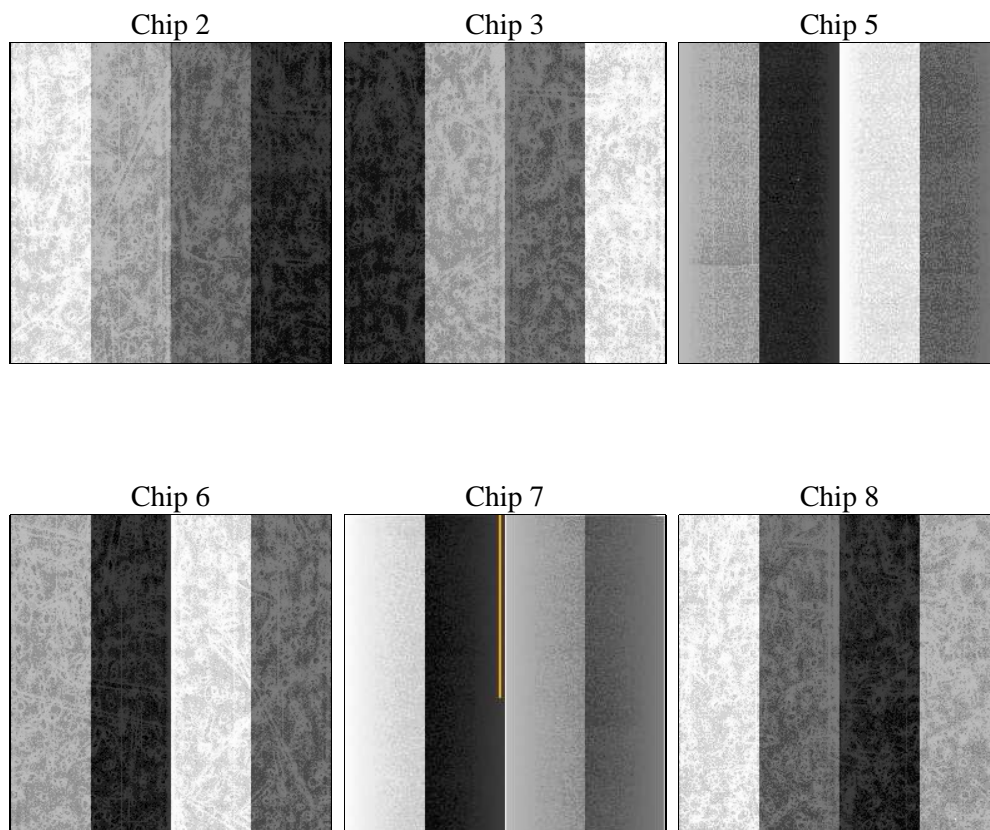
2 OBI

2.1 OBI

2.1.1 Images



2.1.2 Bias



2.1.3 Parameters

obi_num	0	Obi number	sched_exp_time	5000.000000	[s] Scheduled observation exposure time
ascdsver	8.4.4	Processing system revision	ontime	5129.5999809504	Sum of GTIs [s]
caldsver	4.4.9	 	ontime2	5129.5999809504	Sum of GTIs [s]
date	2012-04-26T11:33:16	Date and time of file creation	ontime3	5129.5999809504	Sum of GTIs [s]
revision	2	Processing version of data	ontime5	5129.5999809504	Sum of GTIs [s]
			ontime6	5129.5999809504	Sum of GTIs [s]
			ontime7	5129.5999809504	Sum of GTIs [s]
			ontime8	5126.3590105772	Sum of GTIs [s]
			l1events	450649	Number of level 1 events

2.1.4 Events

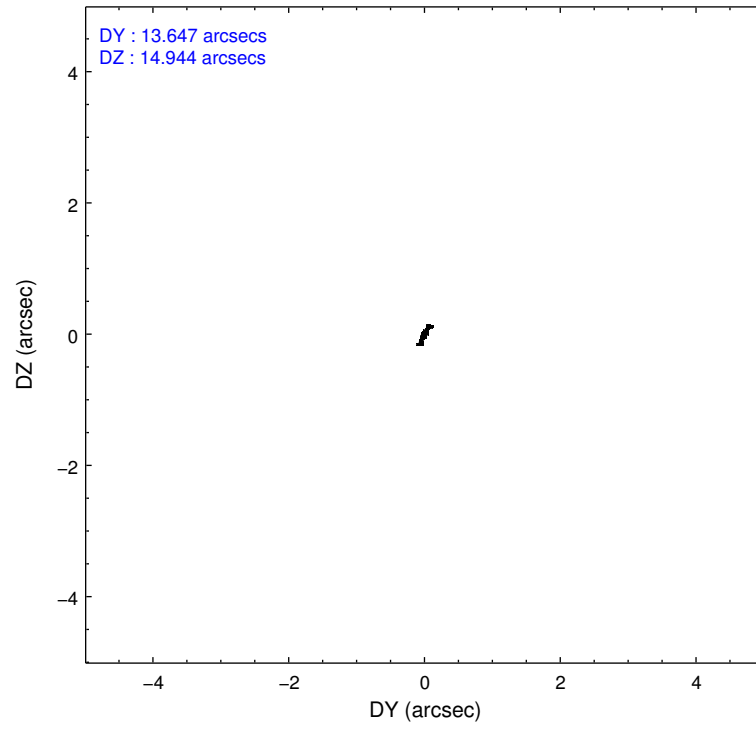
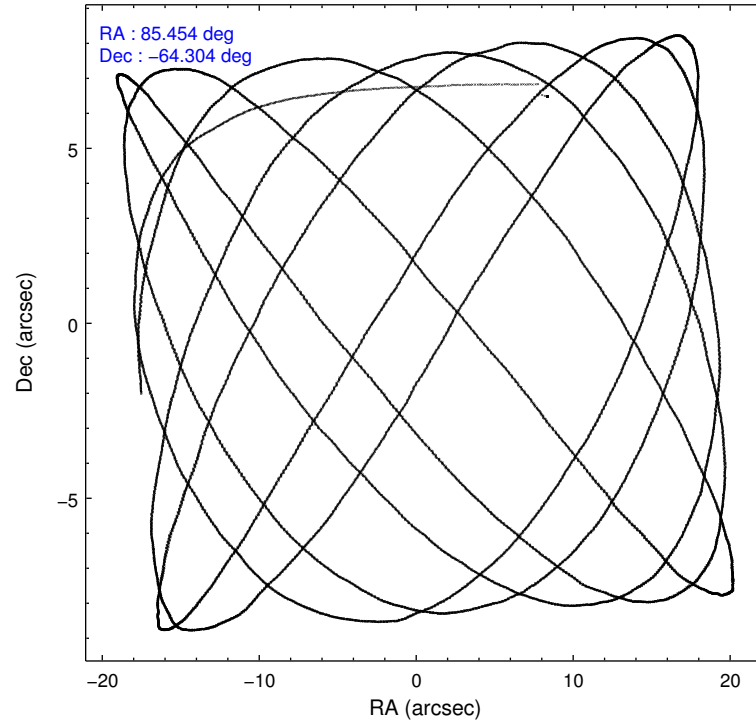
	ccd 2	ccd 3	ccd 5	ccd 6	ccd 7	ccd 8		ccd 2	ccd 3	ccd 5	ccd 6	ccd 7	ccd 8
level 1 events	62964	59564	97356	63293	86415	81057	grade 0 events	3441	3079	3586	3073	3059	5937
rejected events	56828	53786	62356	56991	57497	65733		5%	5%	3%	4%	3%	7%
rejected %	90%	90%	64%	90%	66%	81%	grade 1 events	49	36	127	24	96	58
								0%	0%	0%	0%	0%	0%
							grade 2 events	1629	1467	13504	1766	7308	4156
								2%	2%	13%	2%	8%	5%
							grade 3 events	663	734	1771	743	3103	2028
								1%	1%	1%	1%	3%	2%
							grade 4 events	721	708	1514	719	3038	1894
								1%	1%	1%	1%	3%	2%
							grade 5 events	2450	2821	7835	2830	8113	3806
								3%	4%	8%	4%	9%	4%
							grade 6 events	1298	1259	23498	1577	19679	4692
								2%	2%	24%	2%	22%	5%
							grade 7 events	52713	49460	45521	52561	42019	58486
								83%	83%	46%	83%	48%	72%

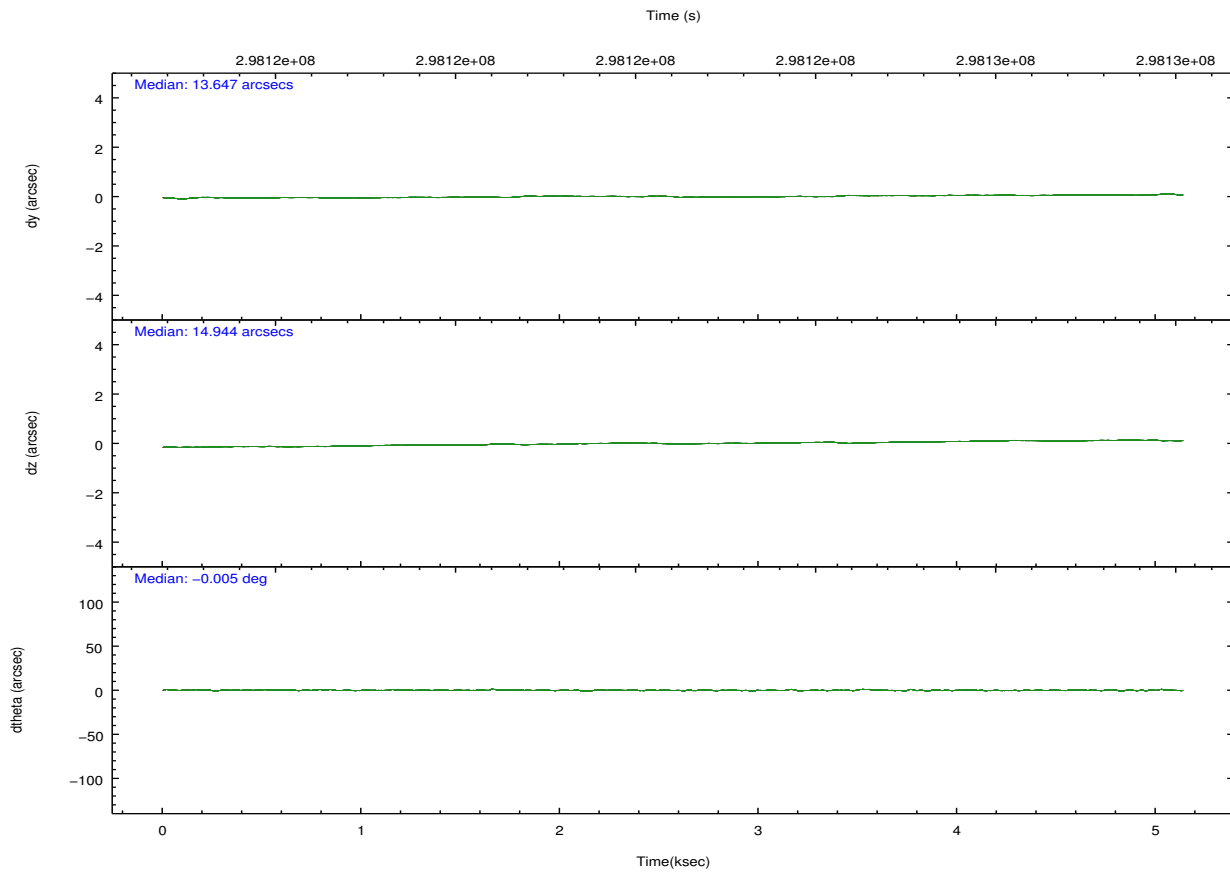
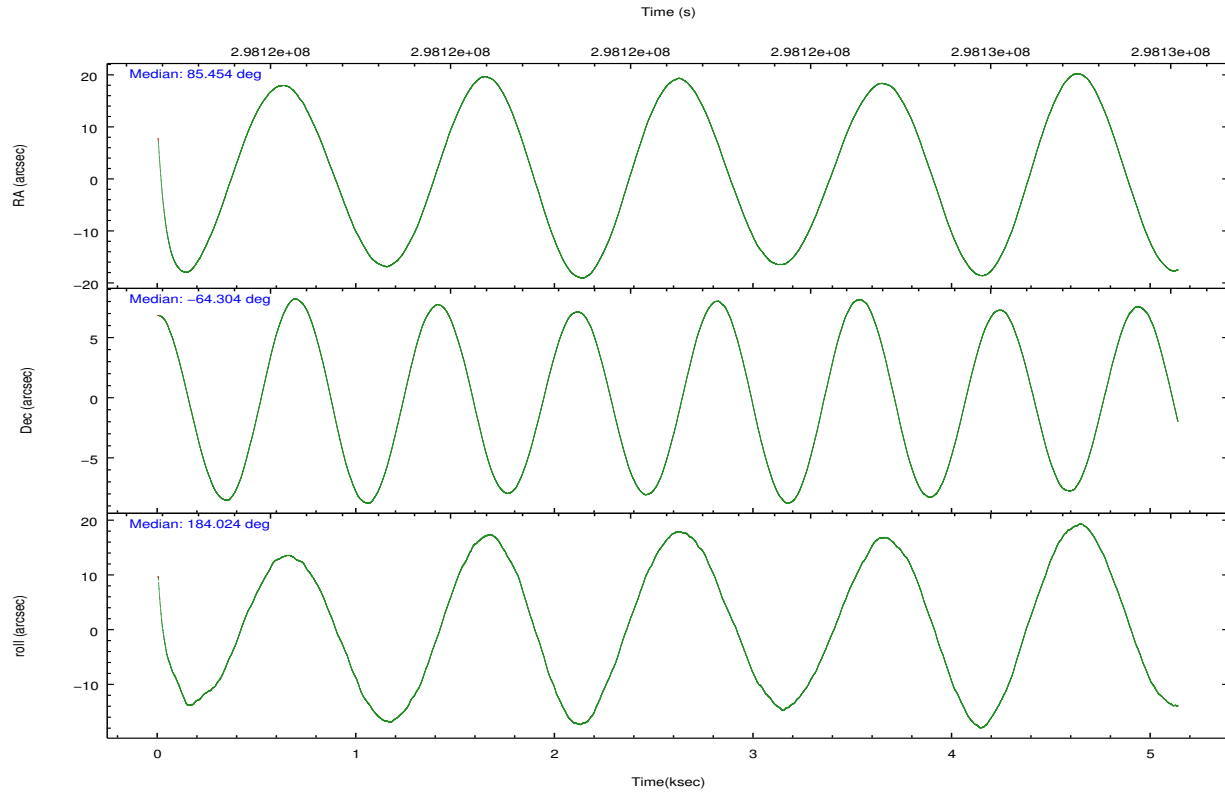
2.2 Compared Parameters

Parameter	Planned	Actual
Instrument	ACIS	ACIS
Detector	ACIS-235678	ACIS-235678
Grating	NONE	NONE
Data mode	FAINT	FAINT
Observation mode	POINTING	POINTING
[deg] Pointing RA	85.505585	85.45374445066182
[deg] Pointing Dec	-64.288342	-64.30393821119971
[deg] Pointing Roll	183.920678	184.0305818720284
[mm] SIM focus pos	-0.684267	-0.6828225247311905
[mm] SIM defocus	0	0.001444936568705701
[mm] SIM translation stage pos	-190.132523	-190.1425803651734
[mm] SIM translation stage offset	0	0.01005778216563158
[s] Observation start time (MET)	298121772.184000	298120066.47732
Observation start date	2007-06-13T11:35:07	2007-06-13T11:07:46
[s] Observation end time (MET)	298126772.184000	298127080.04016
Observation end date	2007-06-13T12:58:27	2007-06-13T13:04:40
Read mode	TIMED	TIMED

Parameter	Planned	Actual
Obspar format version number	7	7
Obspar file type	PREDICTED	ACTUAL
Obspar update status	NONE	UPDATED
Number of optional ACIS chips dropped	0	0
On-chip summing requested	N	N
Subarray requested	NONE	NONE
Alternating exposures requested	N	N
[s] Primary exposure time	0.000000	3.2

2.3 Aspect



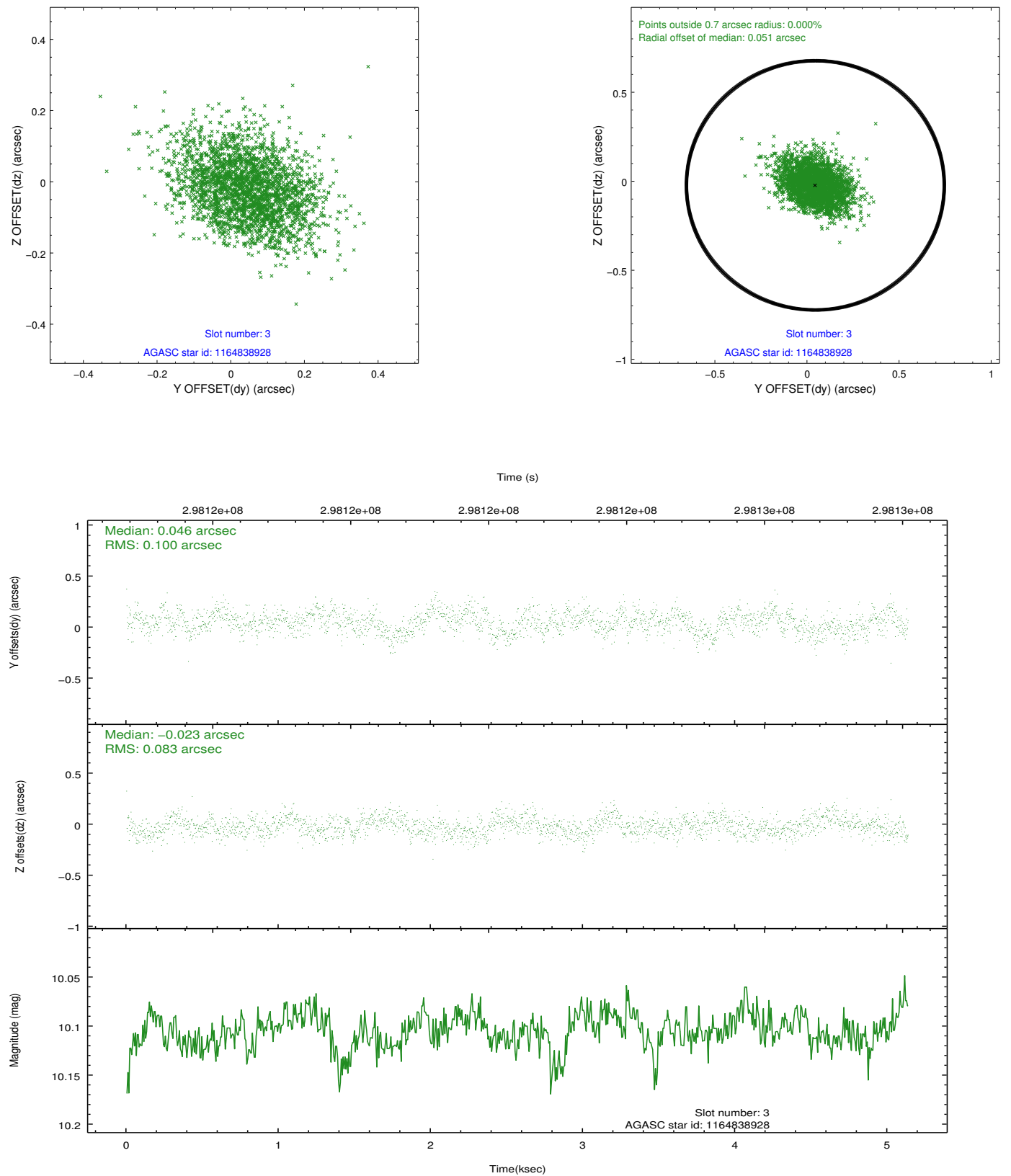


Slot Statistics

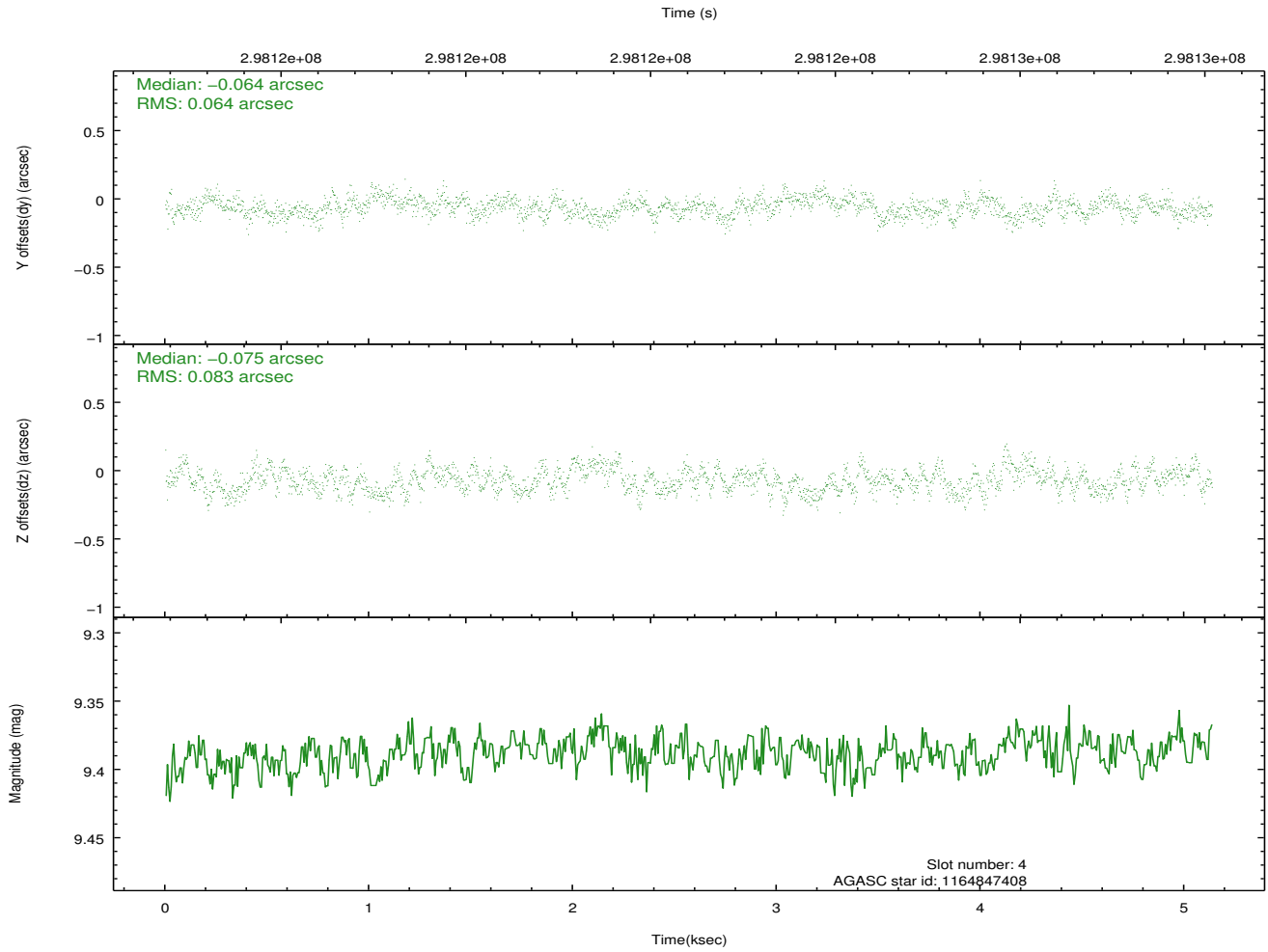
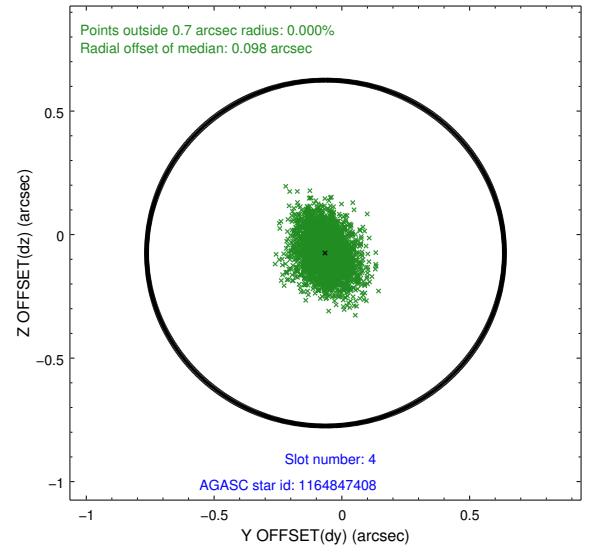
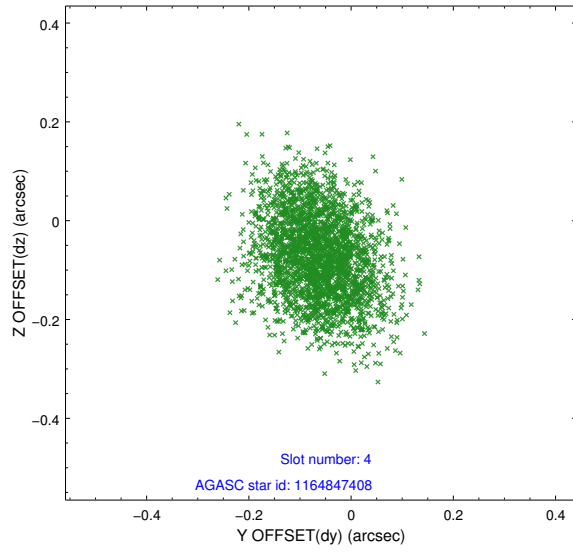
slot	status	id	mag	n_pts	med_dy	med_dz	dr1	dr2	ra	dec	mean_y	mean_z
0	FID	ACIS-S-2	7.09	1253	-0.068	-0.047	0.008	0.015	0.000000	0.000000	-766.63	-1736.32
1	FID	ACIS-S-4	7.19	1253	0.217	0.045	0.007	0.015	0.000000	0.000000	2146.37	171.07
2	FID	ACIS-S-5	7.22	1252	-0.180	0.010	0.009	0.016	0.000000	0.000000	-1818.09	166.00
3	GUIDE	1164838928	10.10	2503	0.046	-0.023	0.136	0.224	84.147245	-63.840751	2042.38	-1731.85
4	GUIDE	1164847408	9.39	2505	-0.064	-0.075	0.112	0.180	85.132885	-64.859502	709.99	2013.58
5	GUIDE	1166542352	8.69	2504	0.010	0.067	0.075	0.122	86.857281	-64.574769	-2011.98	1194.74
6	GUIDE	1166544016	9.65	2496	0.042	-0.193	0.106	0.171	86.089673	-64.349585	-893.52	286.89
7	GUIDE	1166548256	8.76	2503	-0.035	0.219	0.072	0.112	85.738698	-64.074093	-419.06	-743.13

2.4 Star Slots

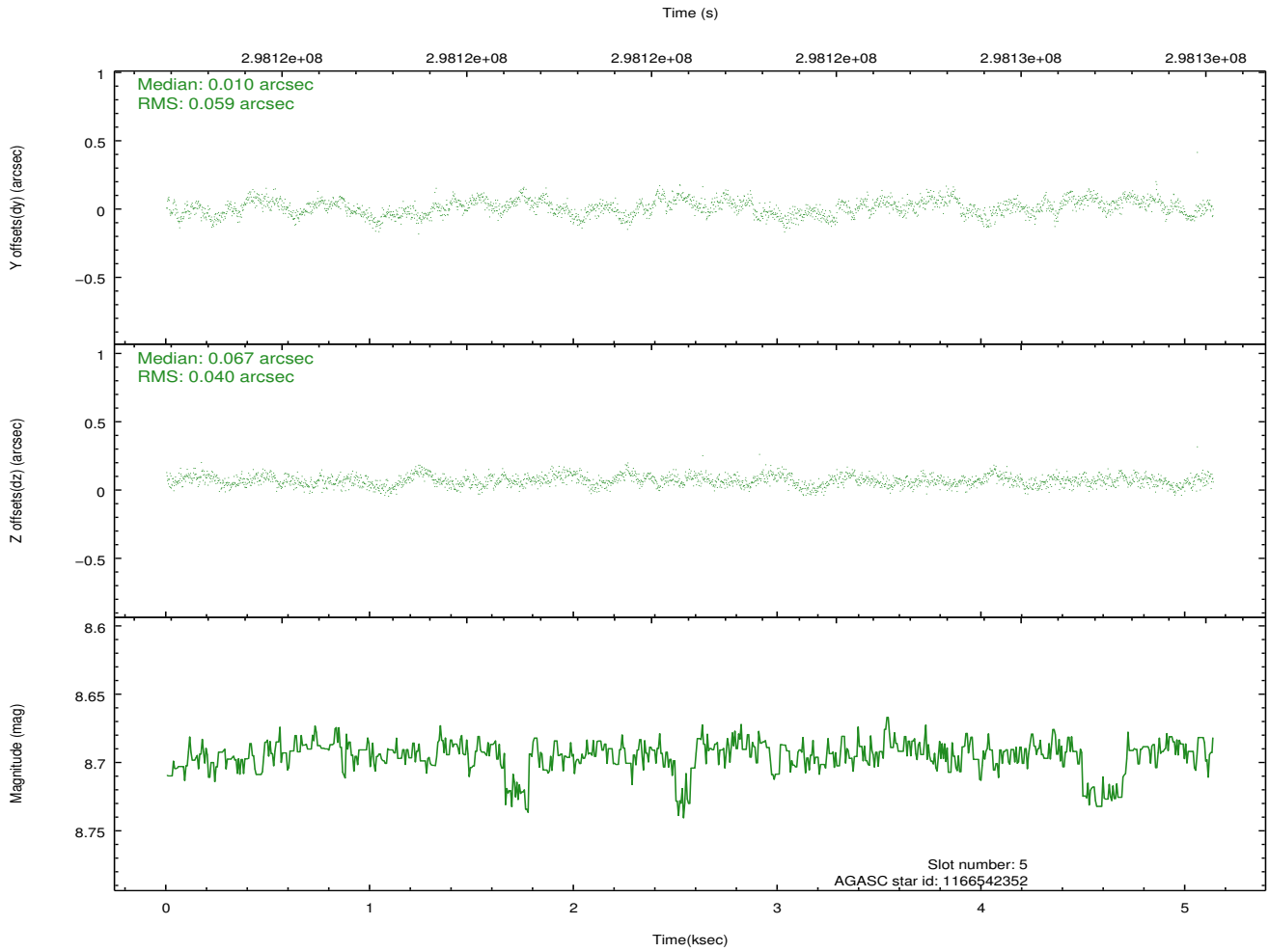
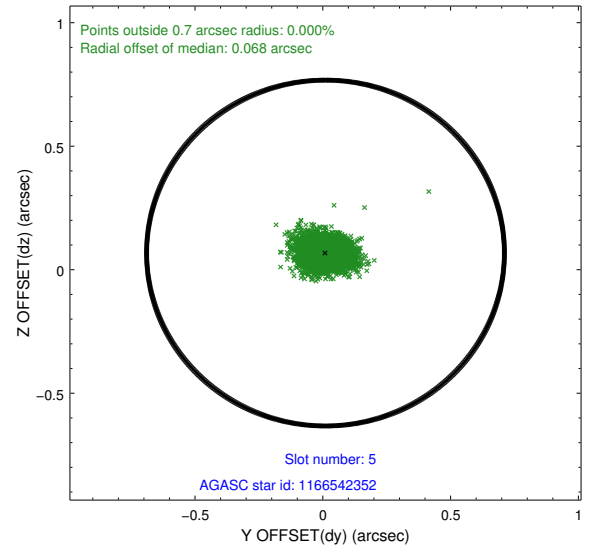
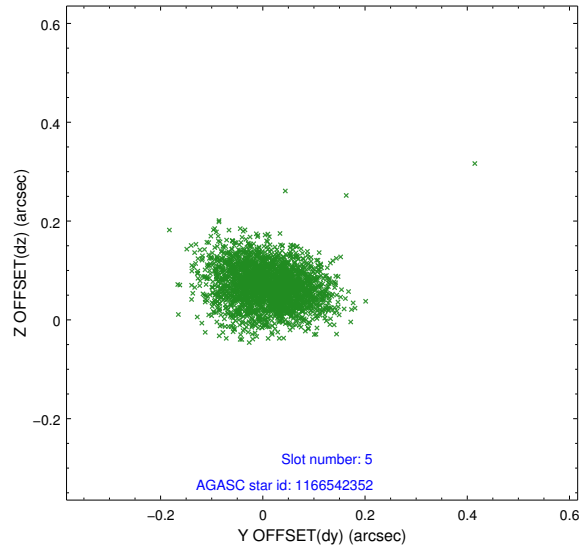
2.4.1 Slot 3



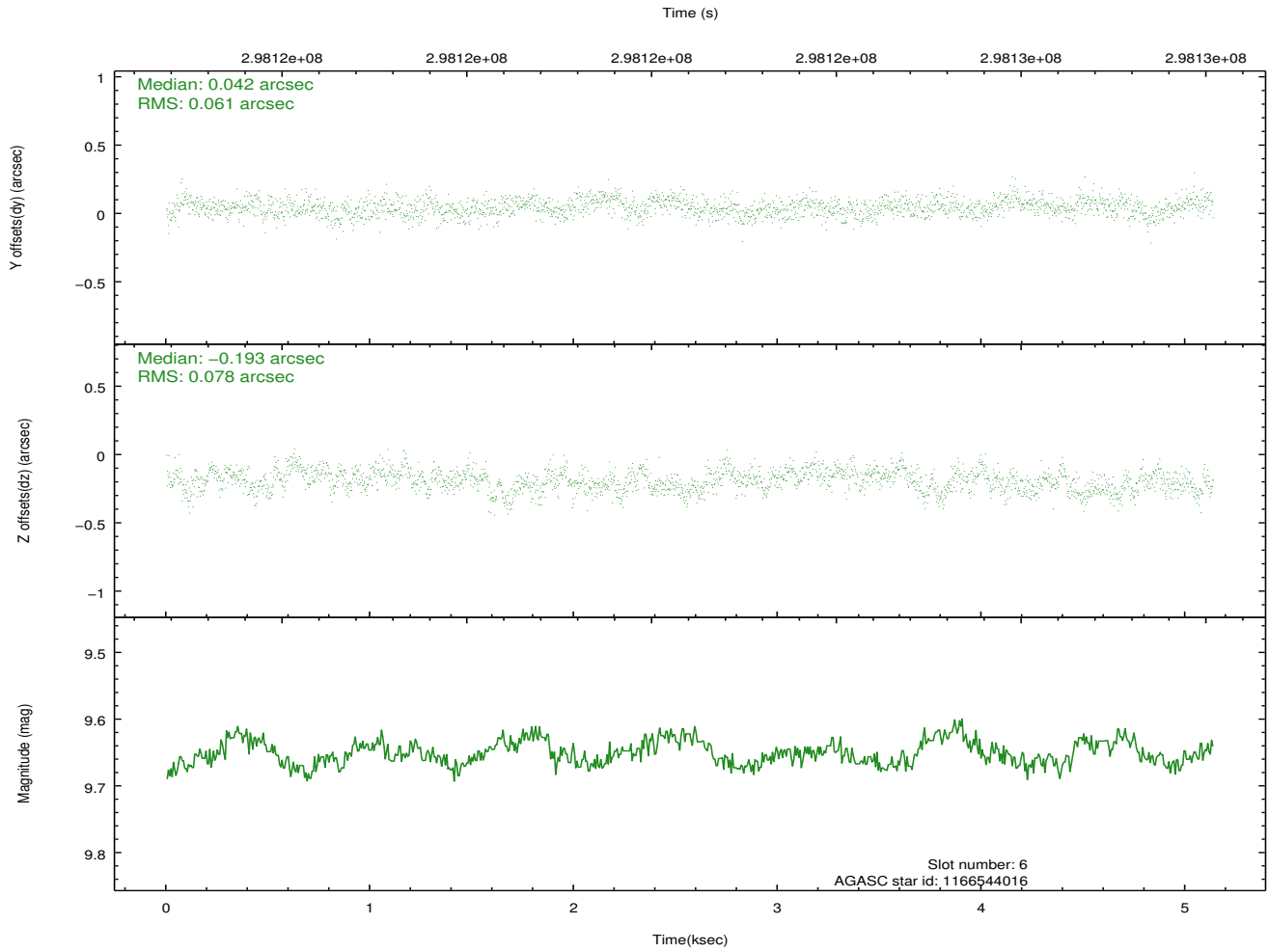
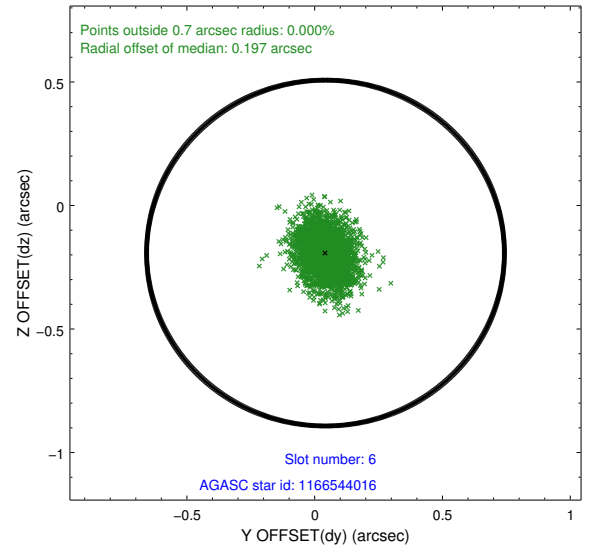
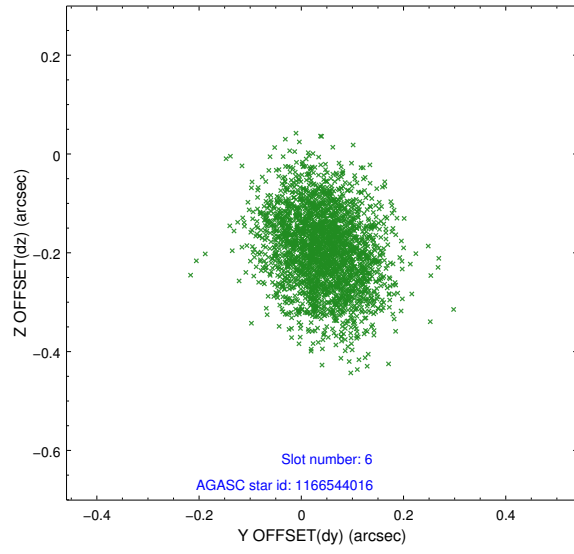
2.4.2 Slot 4



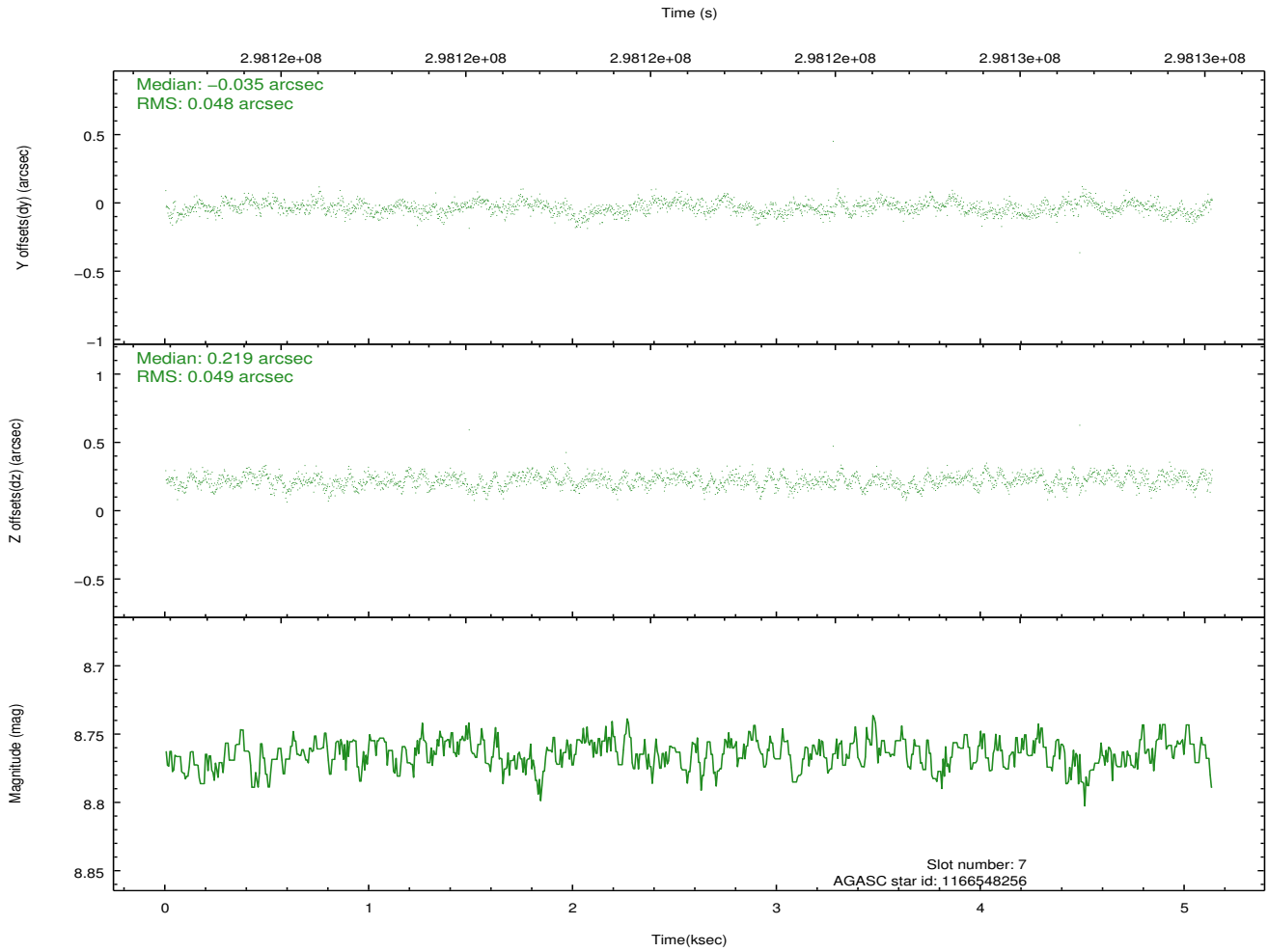
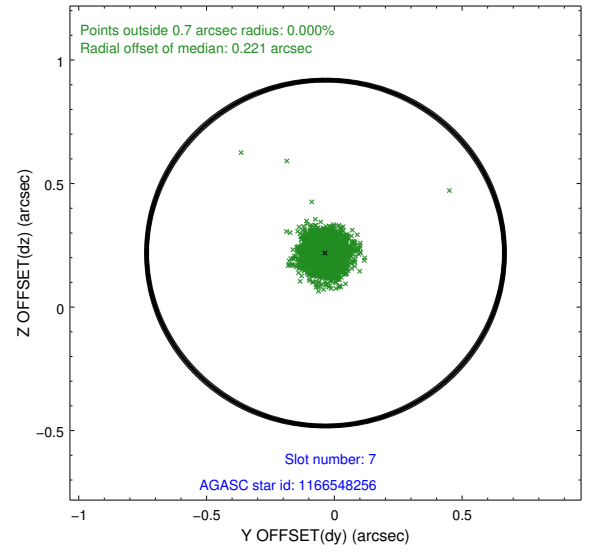
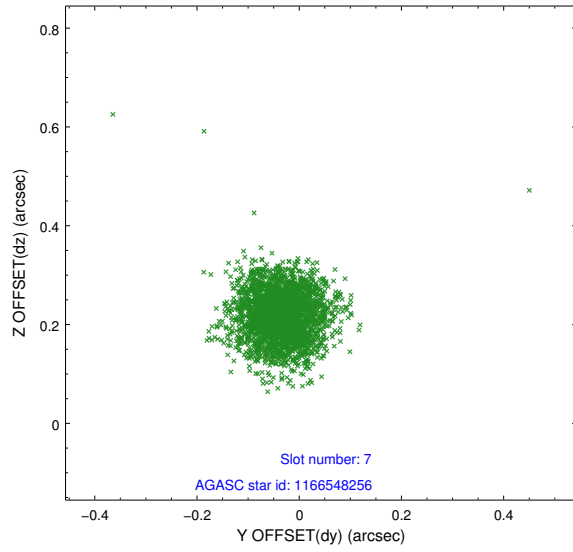
2.4.3 Slot 5



2.4.4 Slot 6

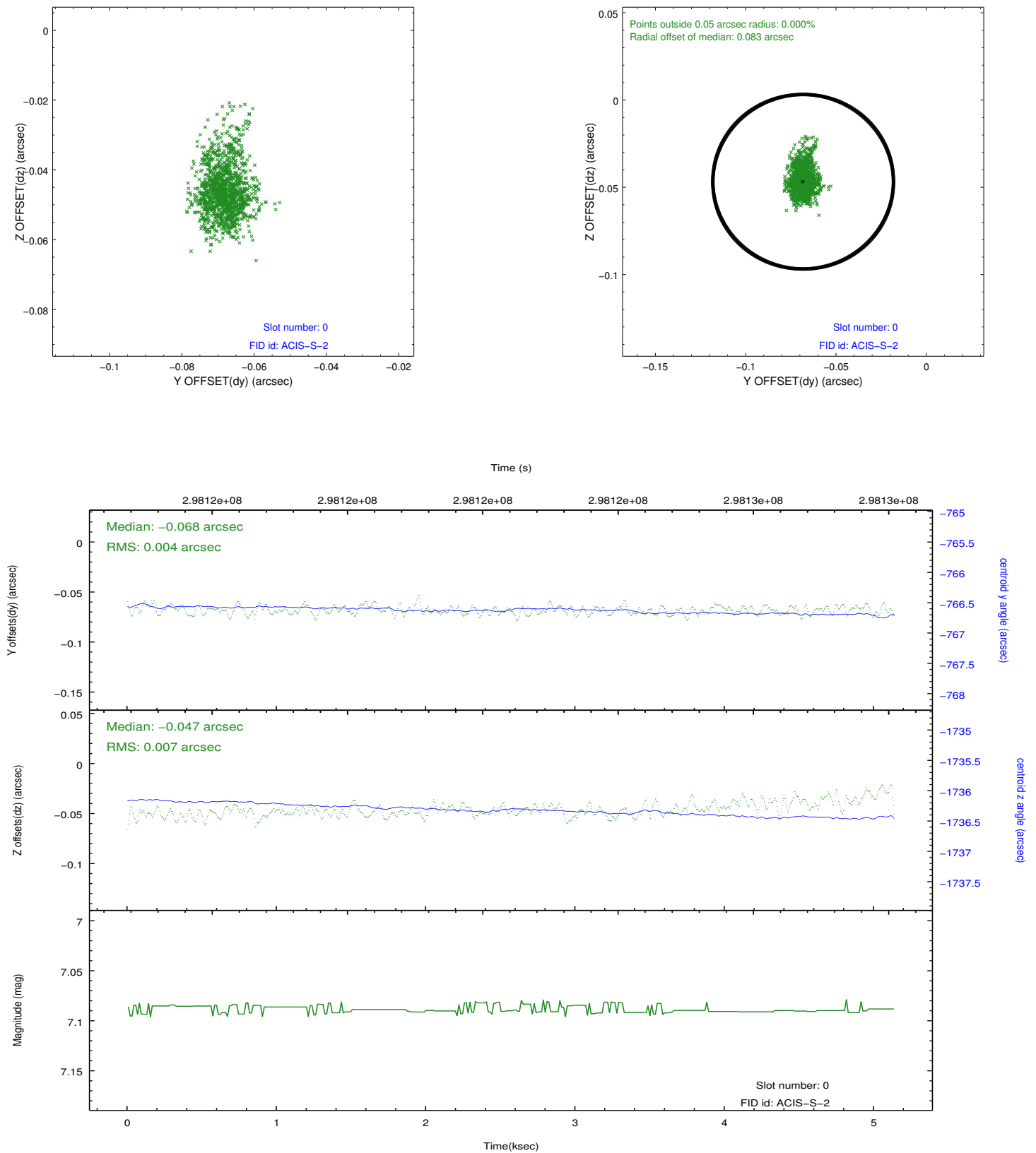


2.4.5 Slot 7

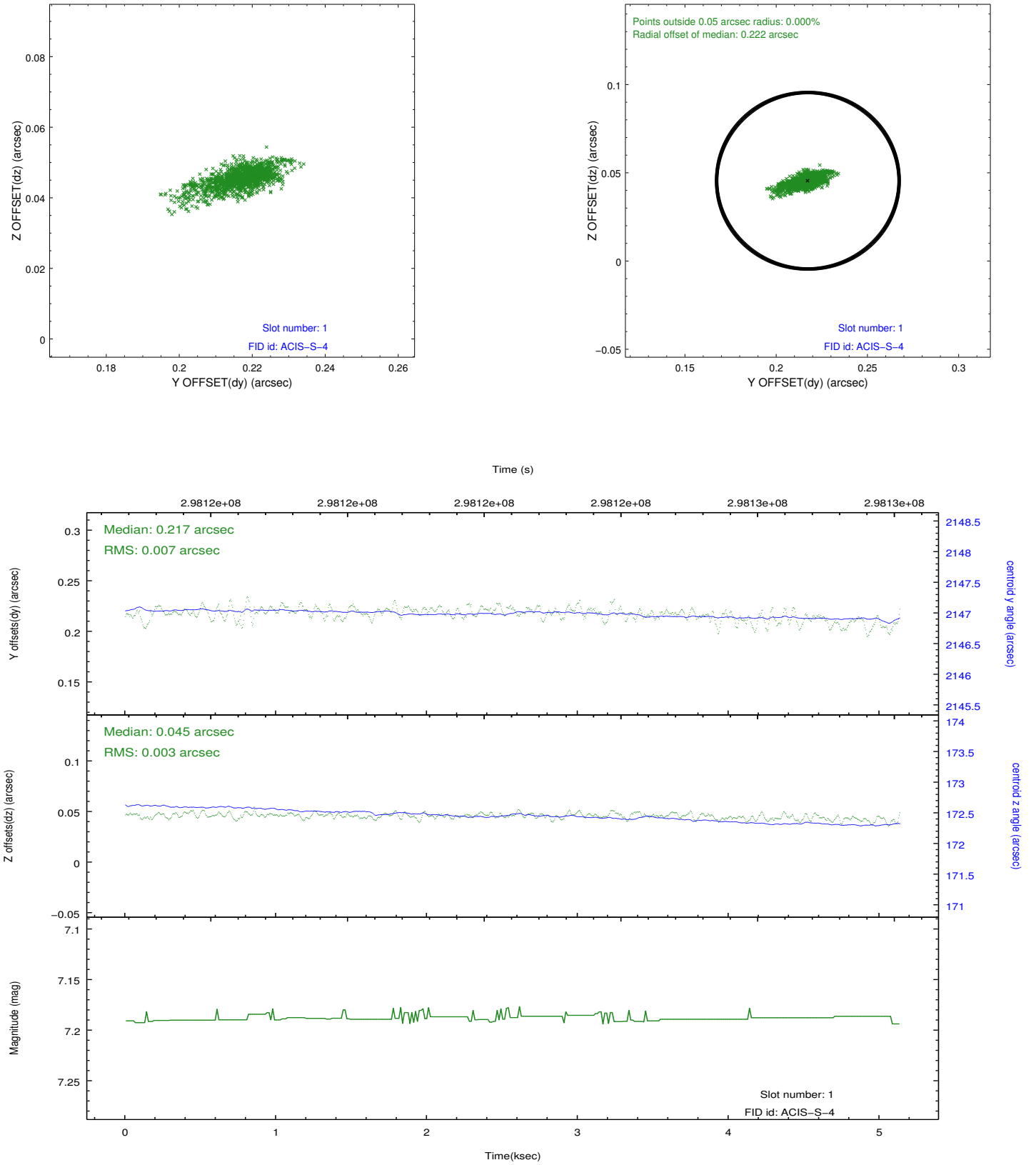


2.5 FID Slots

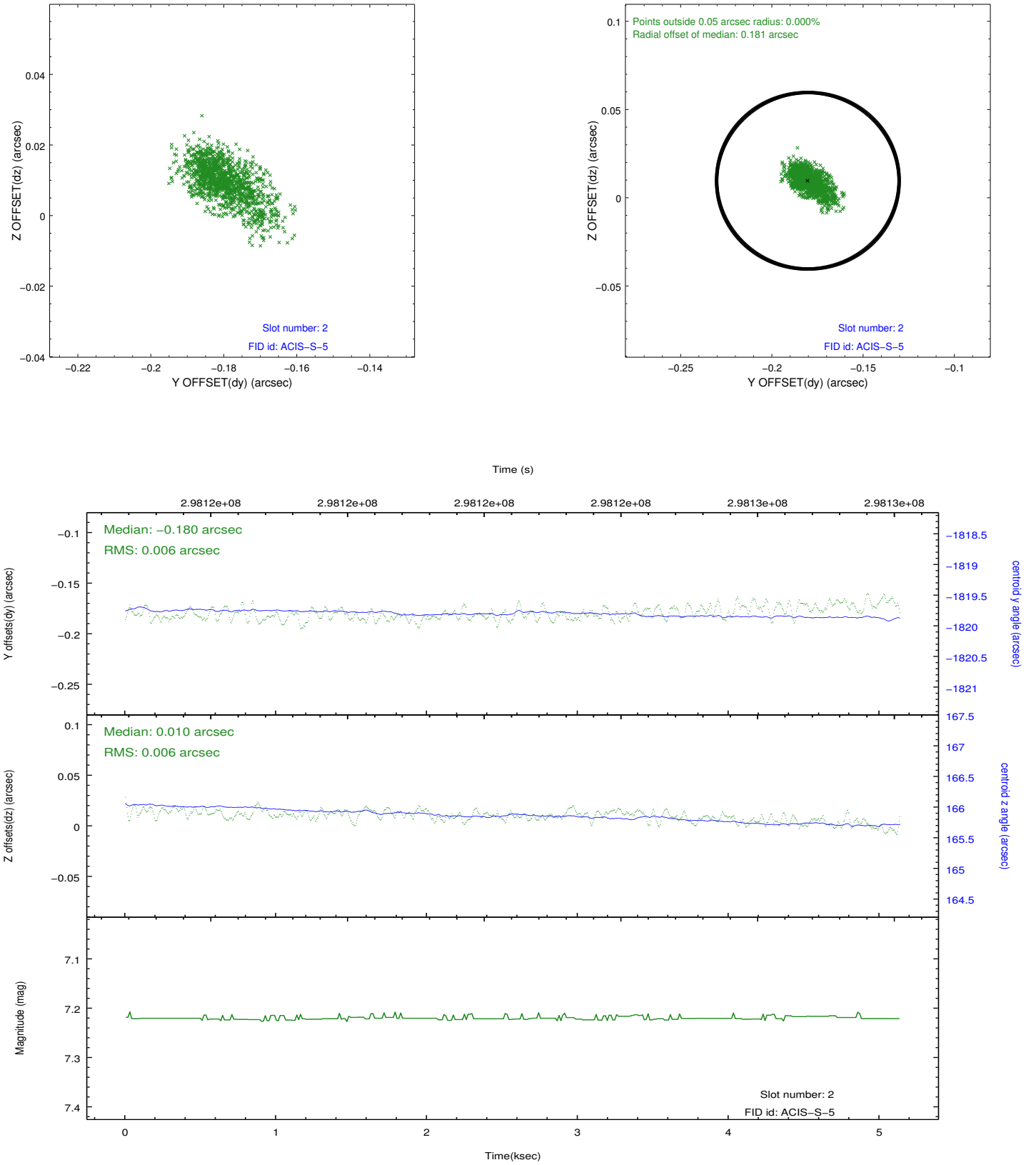
2.5.1 Slot 0



2.5.2 Slot 1



2.5.3 Slot 2



A Summary

A.1 Status

V&V Scientist	Jen Lauer
V&V Date (YYYY-MM-DD)	2012.04.26
V&V Edition	1
V&V Disposition and Status	OK
V&V Charge Time	5.12959998

A.2 Comments