

# V&V Reference Report

## L2 ASCDS Version : 8.4.4

Observation 7686 - L2 Version 2  
Chandra X-Ray Center

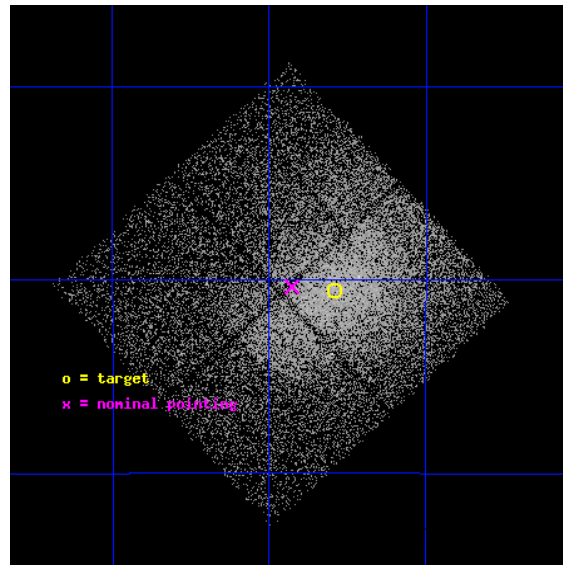
L2 Processing Date : Apr 26 2012

## Contents

<b>1</b>	<b>Front</b>	<b>2</b>
<b>2</b>	<b>OBI</b>	<b>3</b>
2.1	OBI . . . . .	3
2.1.1	Images . . . . .	3
2.1.2	Bias . . . . .	3
2.1.3	Parameters . . . . .	4
2.1.4	Events . . . . .	4
2.2	Compared Parameters . . . . .	5
2.3	Aspect . . . . .	6
2.4	Star Slots . . . . .	9
2.4.1	Slot 3 . . . . .	9
2.4.2	Slot 4 . . . . .	10
2.4.3	Slot 5 . . . . .	11
2.4.4	Slot 6 . . . . .	12
2.4.5	Slot 7 . . . . .	13
2.5	FID Slots . . . . .	14
2.5.1	Slot 0 . . . . .	14
2.5.2	Slot 1 . . . . .	15
2.5.3	Slot 2 . . . . .	16
<b>A</b>	<b>Summary</b>	<b>17</b>
A.1	Status . . . . .	17
A.2	Comments . . . . .	17

# 1 Front

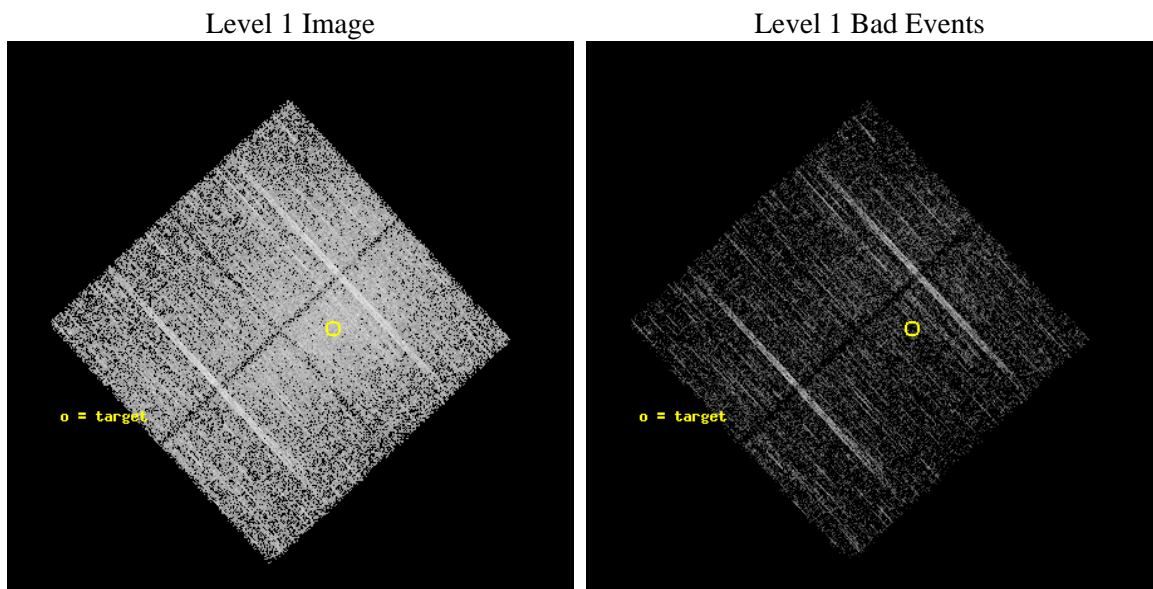
seq_num	701354	Sequence number
obs_id	7686	Observation id
title	Snapshot Survey for X-ray Outbursts in Rich Clusters of Galaxies	P
observer	Professor Gordon Garmire	Principal investigator
object	ABELL3667	Source name
dtcycle	0	&#160
cycle	P	events from which exps? Prim/Second/Both
ra_targ	303.145833	Observer's specified target RA [deg]
dec_targ	-56.842778	Observer's specified target Dec [deg]
ra_nom	303.21385028649	Nominal RA [deg]
dec_nom	-56.839491767566	Nominal Dec [deg]
roll_nom	47.198255648329	Nominal Roll [deg]
revision	2	Processing version of data
ontime	5056.1000388861	Sum of GTIs [s]
livetime	4990.0383696313	Livetime [s]
ontime0	5056.1000388861	Sum of GTIs [s]
ontime1	5056.1000388861	Sum of GTIs [s]
ontime2	5056.1000388861	Sum of GTIs [s]
ontime3	5056.1000388861	Sum of GTIs [s]
l2events	36622	Number of level 2 events



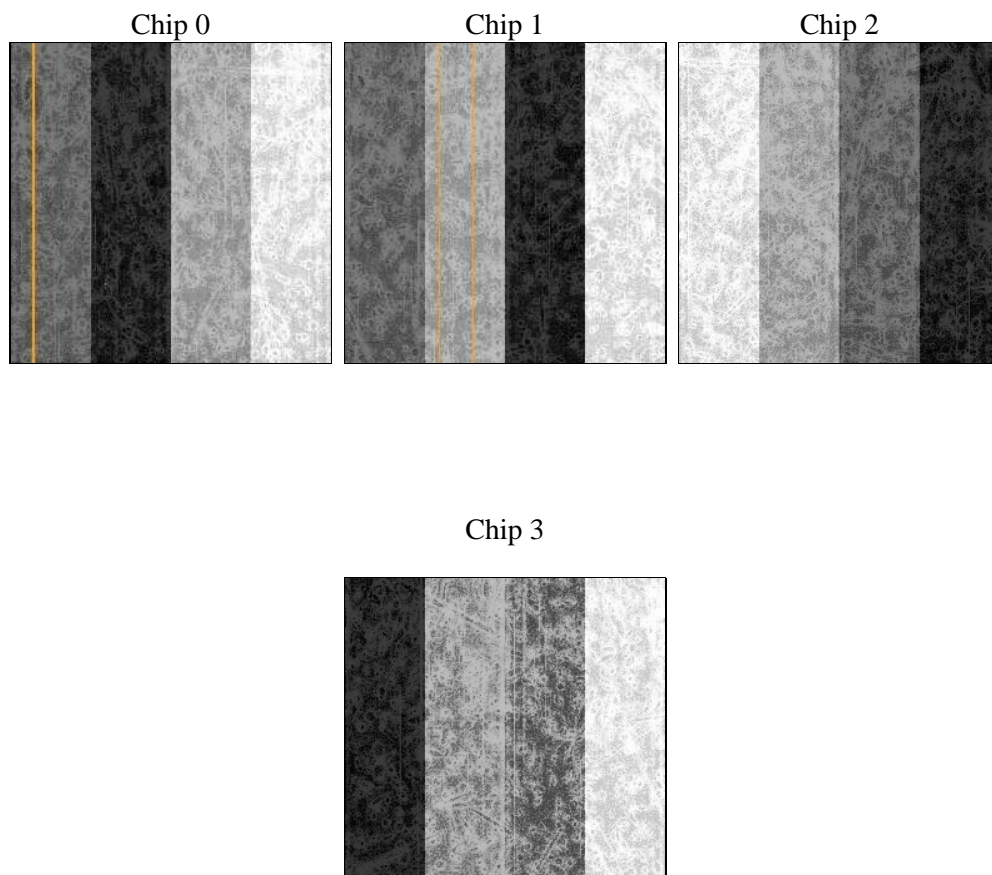
## 2 OBI

### 2.1 OBI

#### 2.1.1 Images



#### 2.1.2 Bias



### 2.1.3 Parameters

obi_num	0	Obi number	sched_exp_time	5000.000000	[s] Scheduled observation exposure time
ascdsver	8.4.4	Processing system revision	ontime	5056.1000388861	Sum of GTIs [s]
caldsver	4.4.9	&#160	ontime0	5056.1000388861	Sum of GTIs [s]
date	2012-04-27T01:31:05	Date and time of file creation	ontime1	5056.1000388861	Sum of GTIs [s]
revision	2	Processing version of data	ontime2	5056.1000388861	Sum of GTIs [s]
			ontime3	5056.1000388861	Sum of GTIs [s]
			l1events	165839	Number of level 1 events

### 2.1.4 Events

	ccd 0	ccd 1	ccd 2	ccd 3
level 1 events	36306	37365	43149	49019
rejected events	30439	28907	34566	31318
rejected %	83%	77%	80%	63%

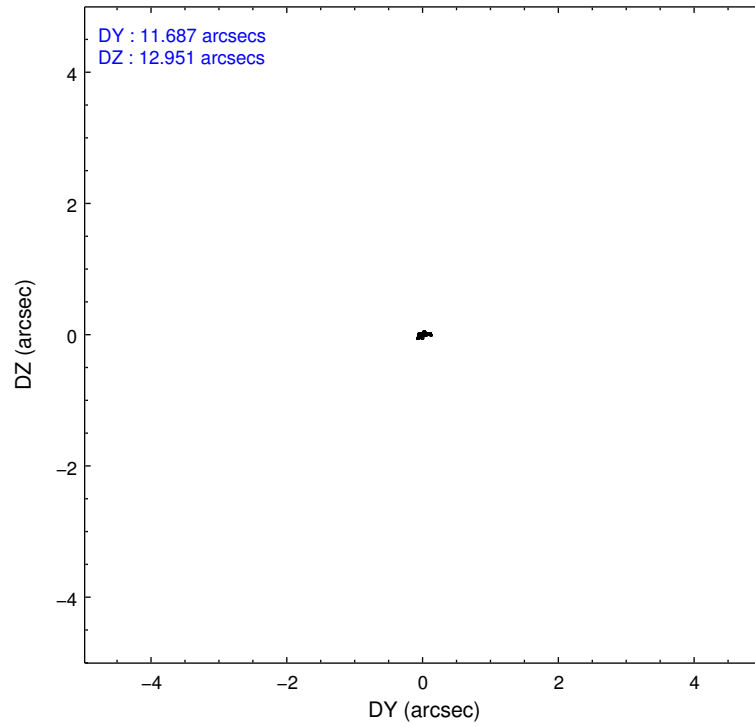
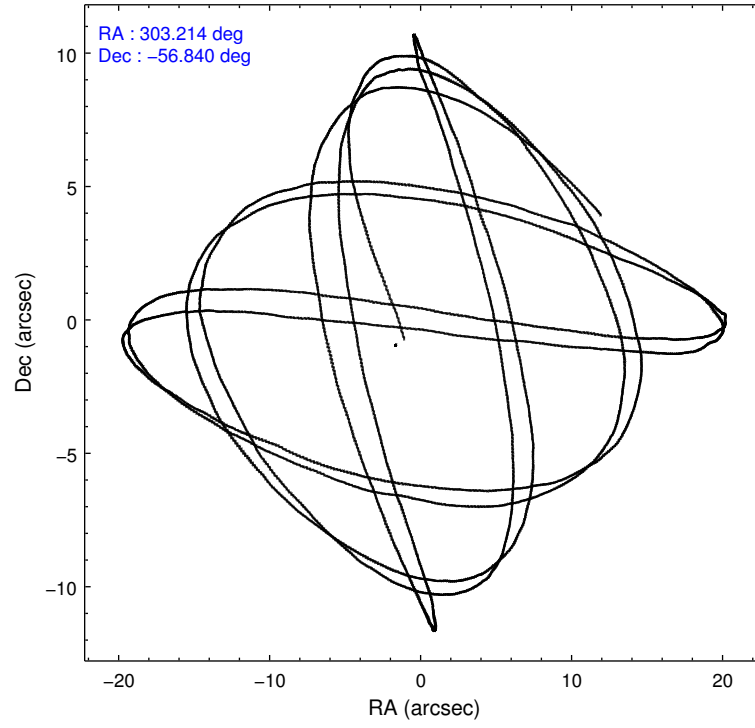
	ccd 0	ccd 1	ccd 2	ccd 3
grade 0 events	3363	5541	5810	13249
	9%	14%	13%	27%
grade 1 events	36	40	61	102
	0%	0%	0%	0%
grade 2 events	1074	1214	1252	2041
	2%	3%	2%	4%
grade 3 events	473	560	473	782
	1%	1%	1%	1%
grade 4 events	448	557	506	816
	1%	1%	1%	1%
grade 5 events	555	695	546	729
	1%	1%	1%	1%
grade 6 events	513	593	548	820
	1%	1%	1%	1%
grade 7 events	29844	28165	33953	30480
	82%	75%	78%	62%

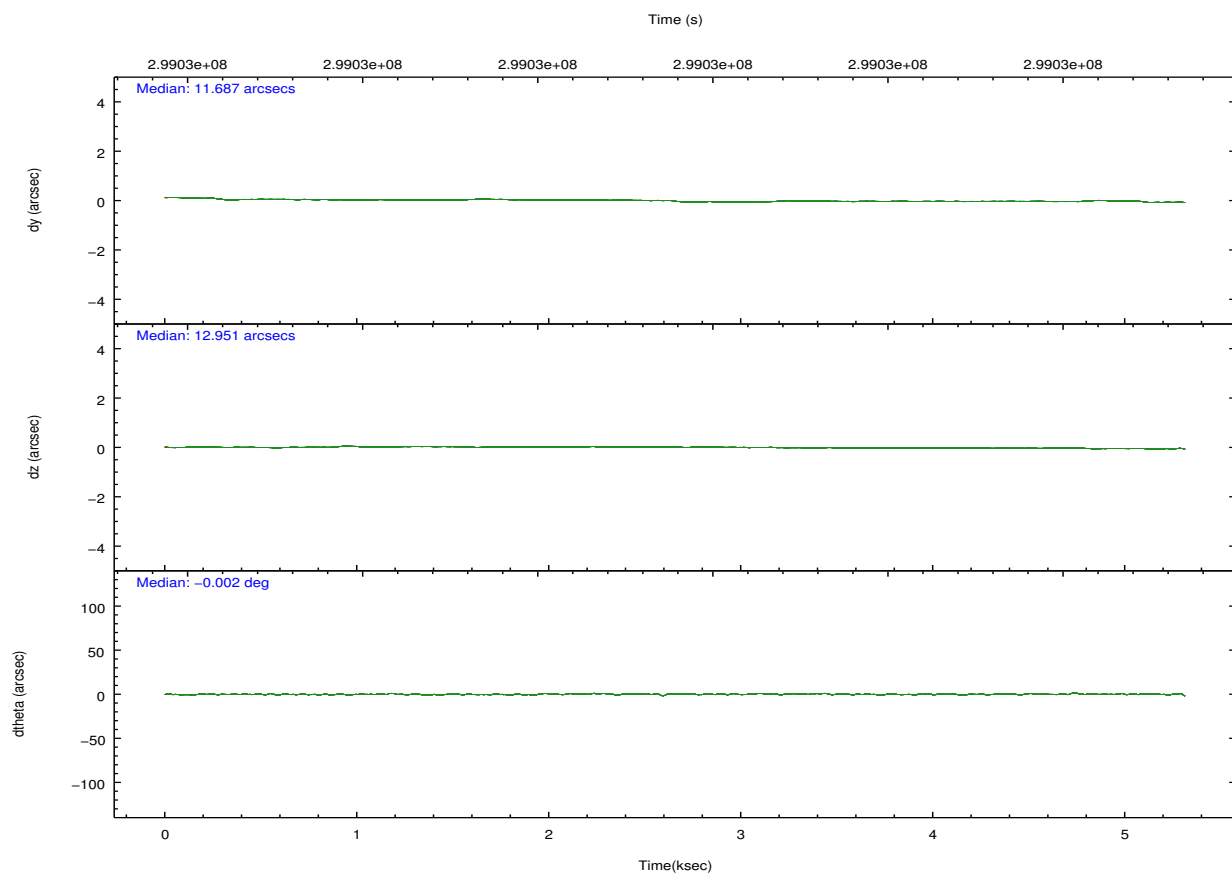
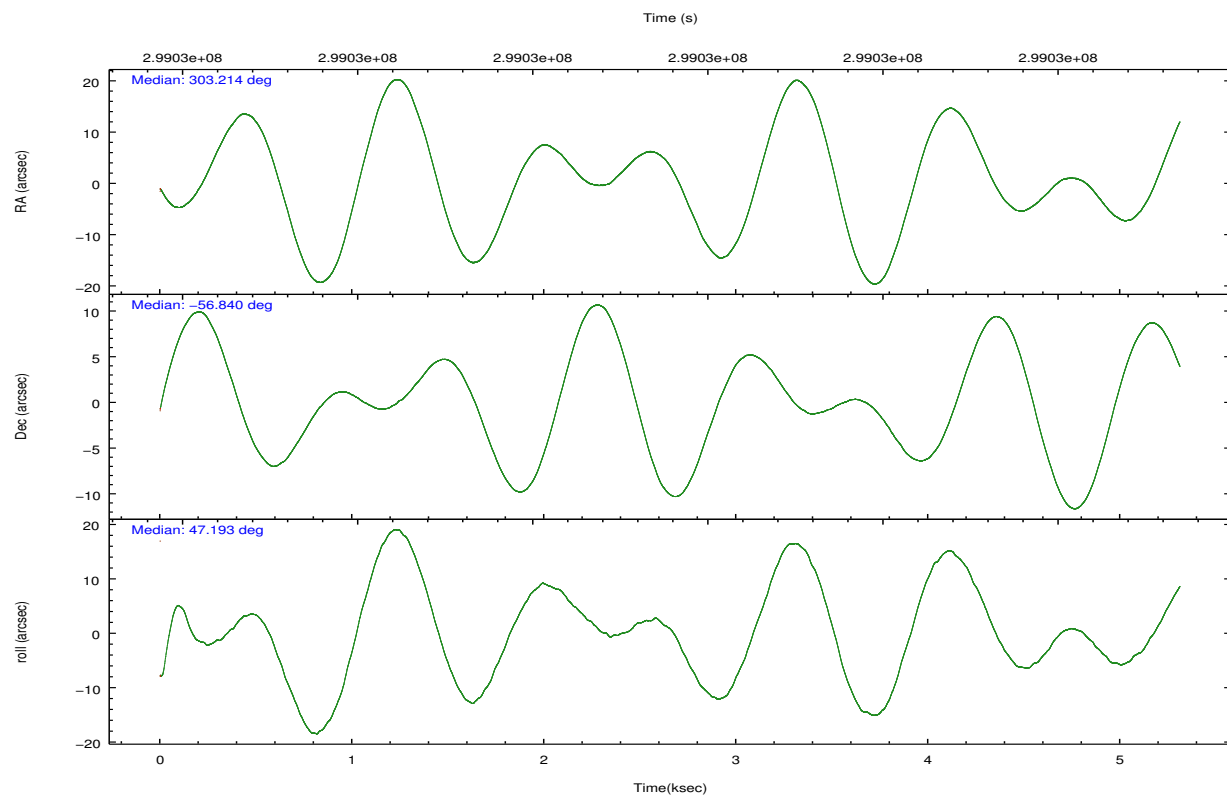


## 2.2 Compared Parameters

Parameter	Planned	Actual	Parameter	Planned	Actual
Instrument	ACIS	ACIS	Obspar format version number	7	7
Detector	ACIS-0123	ACIS-0123	Obspar file type	PREDICTED	ACTUAL
Grating	NONE	NONE	Obspar update status	NONE	UPDATED
Data mode	VFAINT	VFAINT	Number of optional ACIS chips dropped	0	0
Observation mode	POINTING	POINTING	On-chip summing requested	N	N
[deg] Pointing RA	303.202949	303.213850286491	Subarray requested	NONE	NONE
[deg] Pointing Dec	-56.866462	-56.83949176756599	Alternating exposures requested	N	N
[deg] Pointing Roll	46.980468	47.19825564832949	[s] Primary exposure time	0.000000	3.1
[mm] SIM focus pos	-0.782348	-0.7809083437167272			
[mm] SIM defocus	0	0.001439871863259334			
[mm] SIM translation stage pos	-233.592463	-233.5874344608287			
[mm] SIM translation stage offset	0	-0.005018542100998502			
[s] Observation start time (MET)	299028443.184000	299027510.29574			
Observation start date	2007-06-23T23:26:18	2007-06-23T23:11:50			
[s] Observation end time (MET)	299033443.184000	299034646.85858			
Observation end date	2007-06-24T00:49:38	2007-06-24T01:10:46			
Read mode	TIMED	TIMED			

## 2.3 Aspect



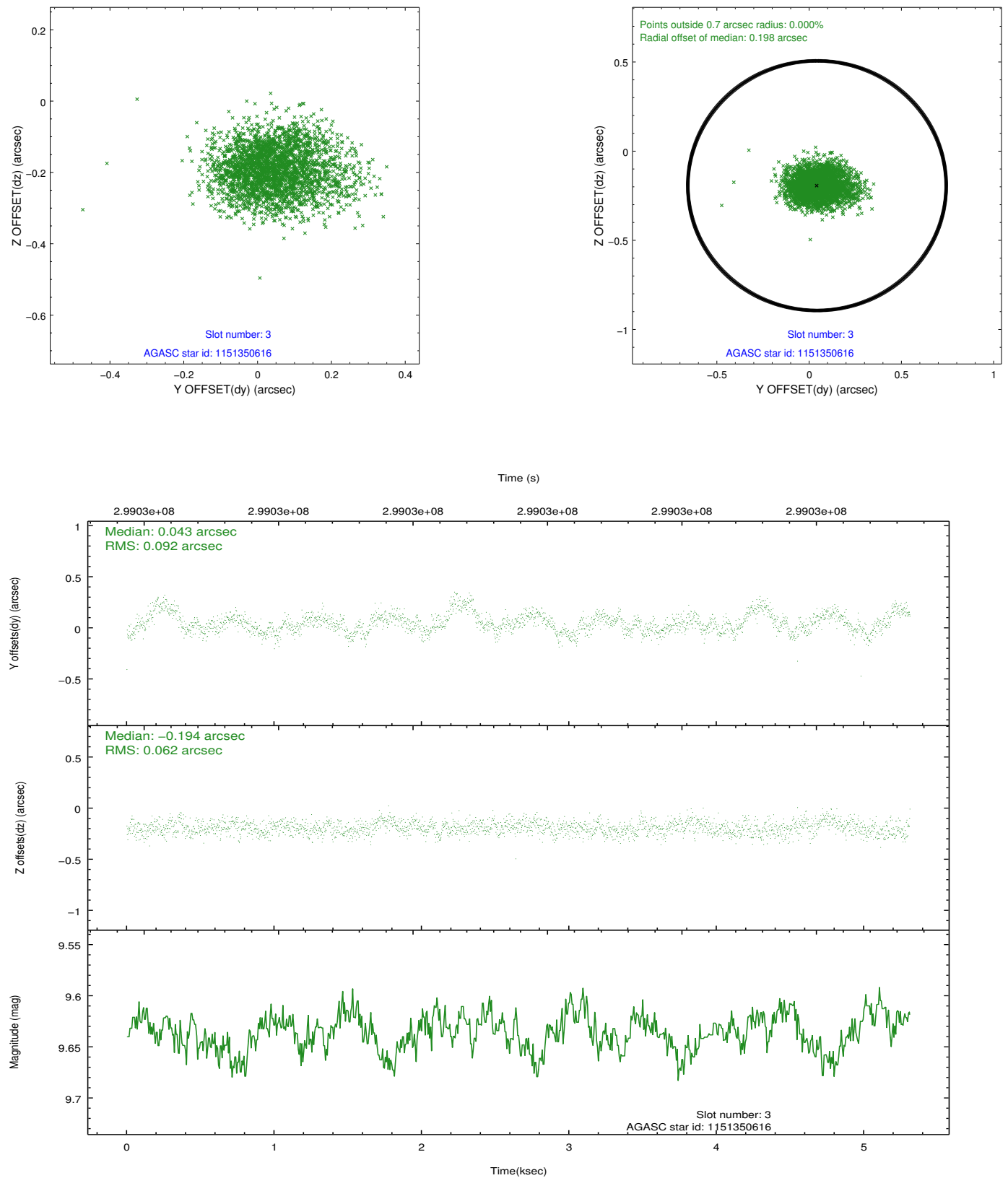


### Slot Statistics

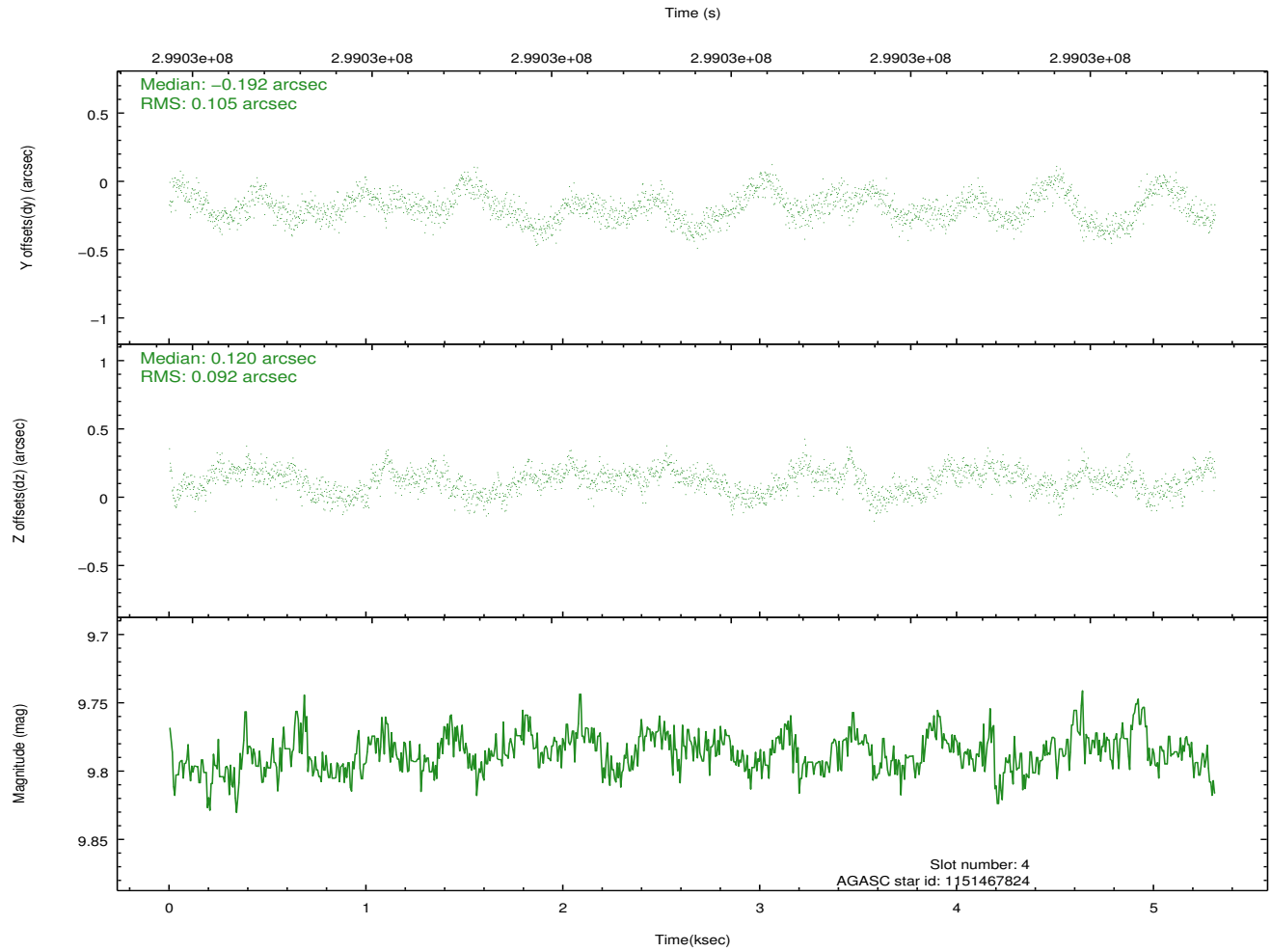
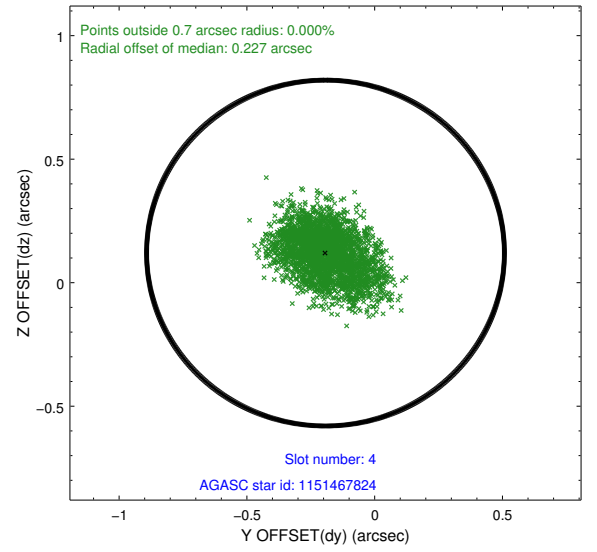
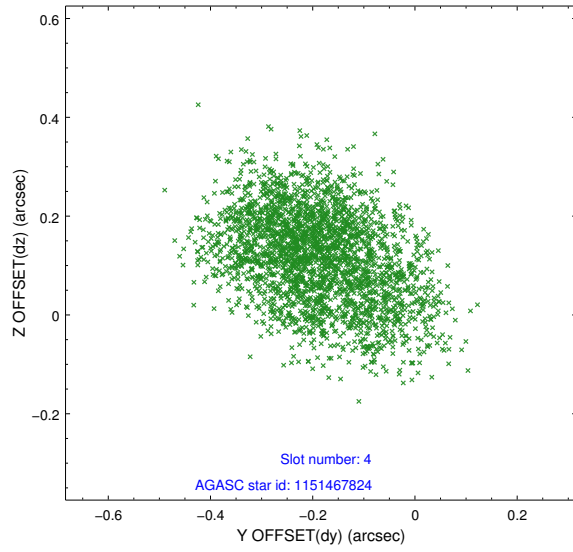
slot	status	id	mag	n_pts	med_dy	med_dz	dr1	dr2	ra	dec	mean_y	mean_z
0	FID	ACIS-I-1	7.24	1296	0.055	-0.013	0.006	0.011	0.000000	0.000000	927.91	-836.51
1	FID	ACIS-I-5	7.24	1296	-0.215	0.060	0.006	0.011	0.000000	0.000000	-1819.82	1060.50
2	FID	ACIS-I-6	7.24	1296	0.068	0.023	0.007	0.012	0.000000	0.000000	392.25	1706.24
3	GUIDE	1151350616	9.64	2590	0.043	-0.194	0.116	0.195	301.990140	-56.664449	-1120.79	2235.26
4	GUIDE	1151467824	9.79	2587	-0.192	0.120	0.152	0.236	304.148609	-56.830788	1354.84	-1281.98
5	GUIDE	1151471240	9.46	2590	0.188	0.021	0.104	0.166	303.425045	-57.451391	-1245.60	-1752.41
6	GUIDE	1151472992	9.61	2580	-0.067	0.161	0.106	0.169	303.531180	-57.237033	-540.49	-1379.46
7	GUIDE	1151468968	10.24	2588	0.021	-0.103	0.149	0.242	304.011109	-56.684544	1562.13	-728.70

## 2.4 Star Slots

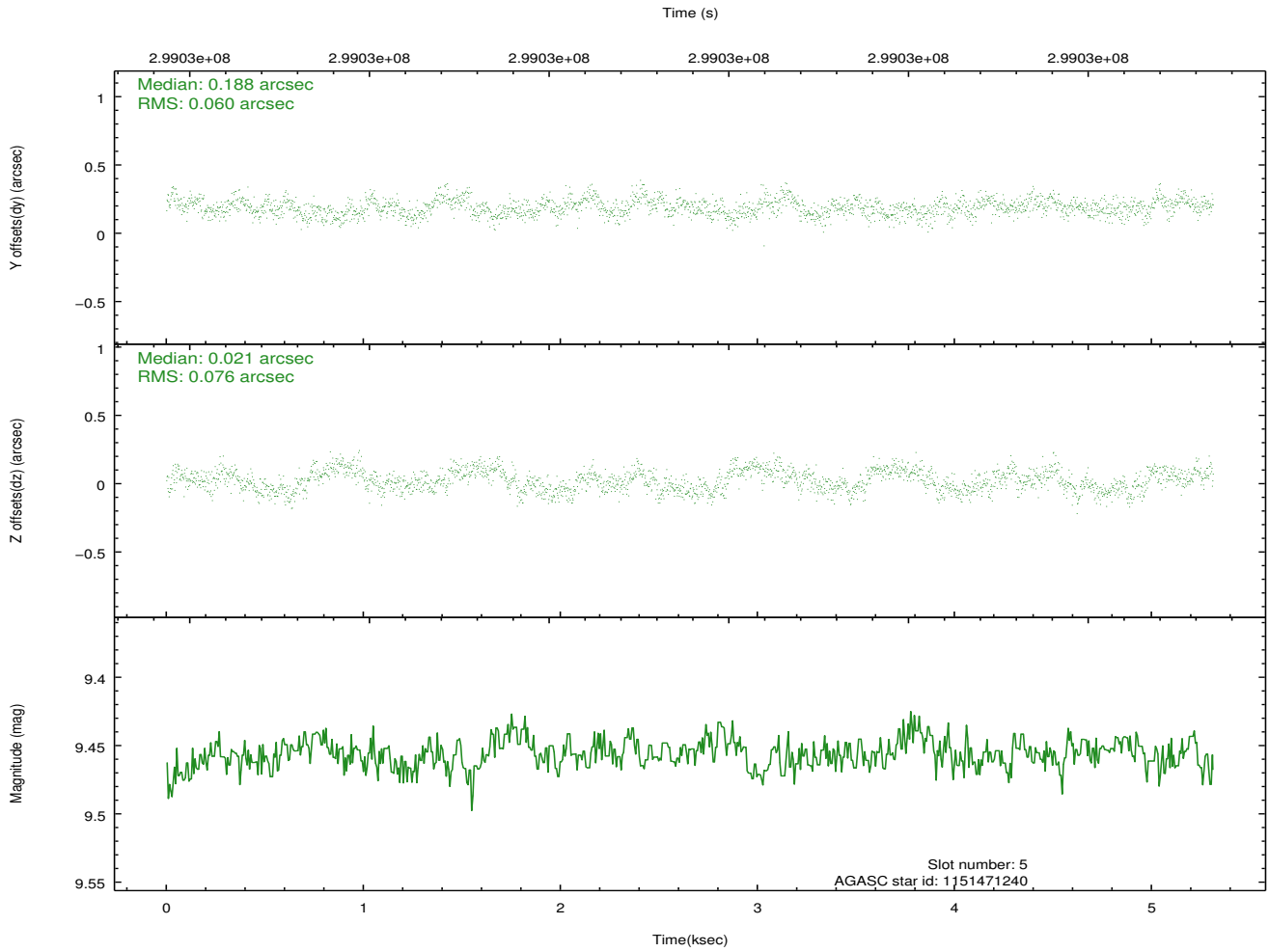
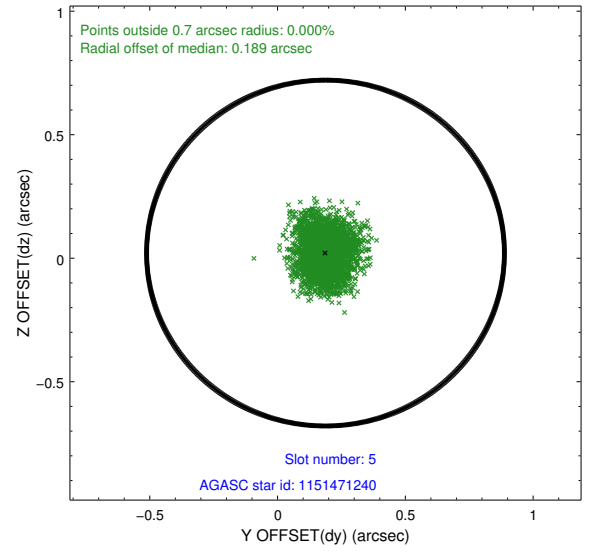
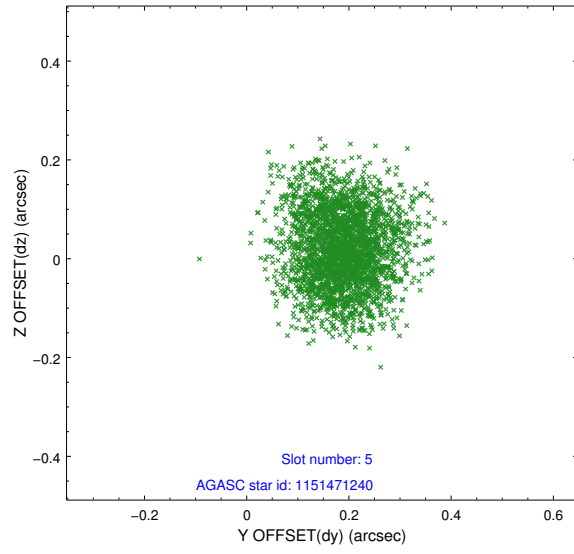
### 2.4.1 Slot 3



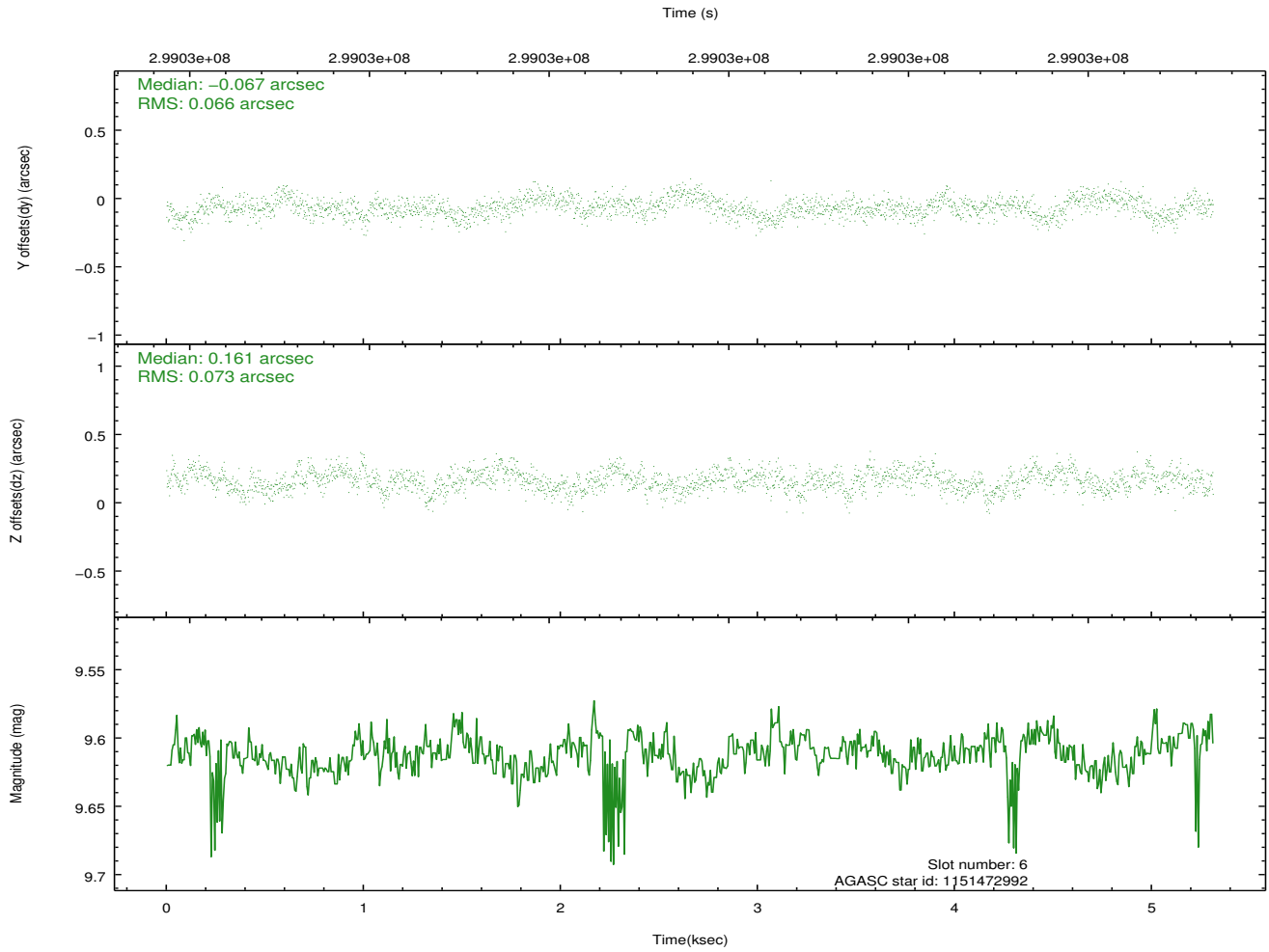
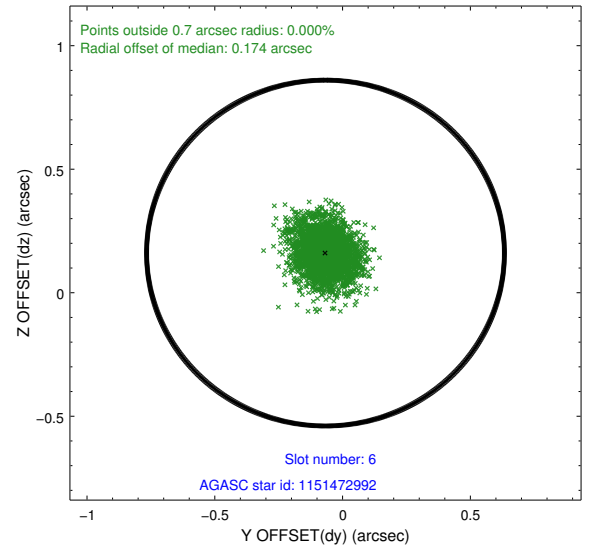
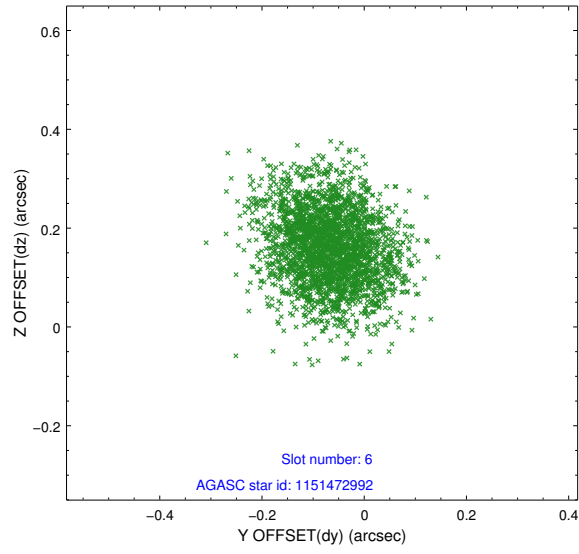
## 2.4.2 Slot 4



### 2.4.3 Slot 5

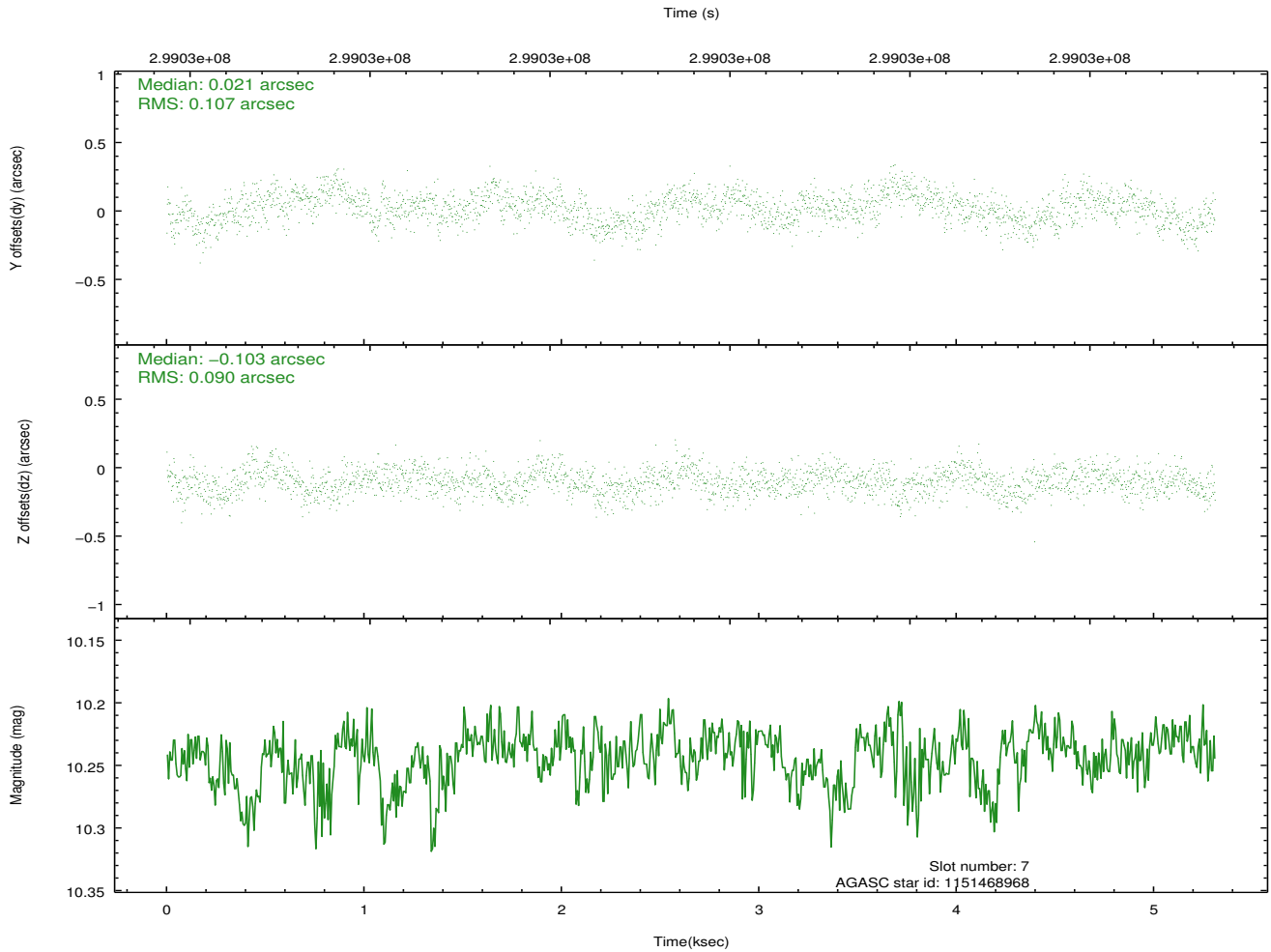
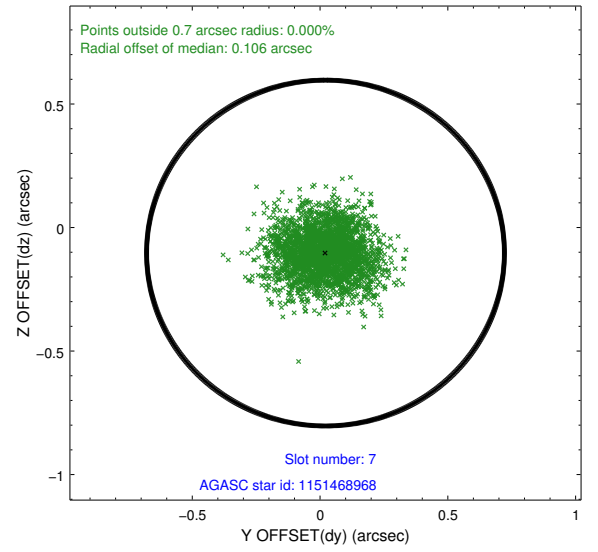
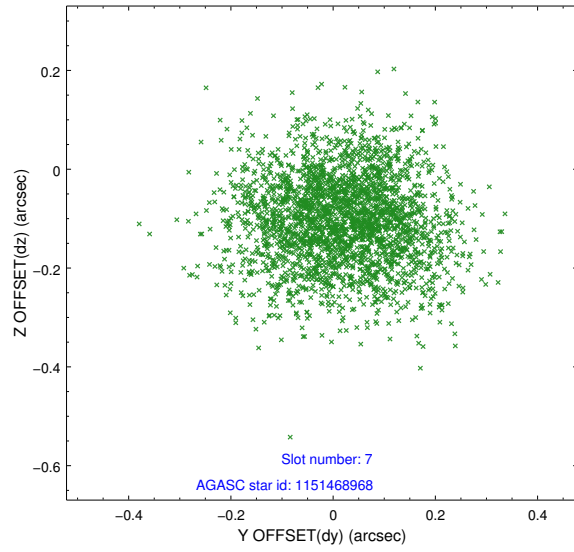


## 2.4.4 Slot 6



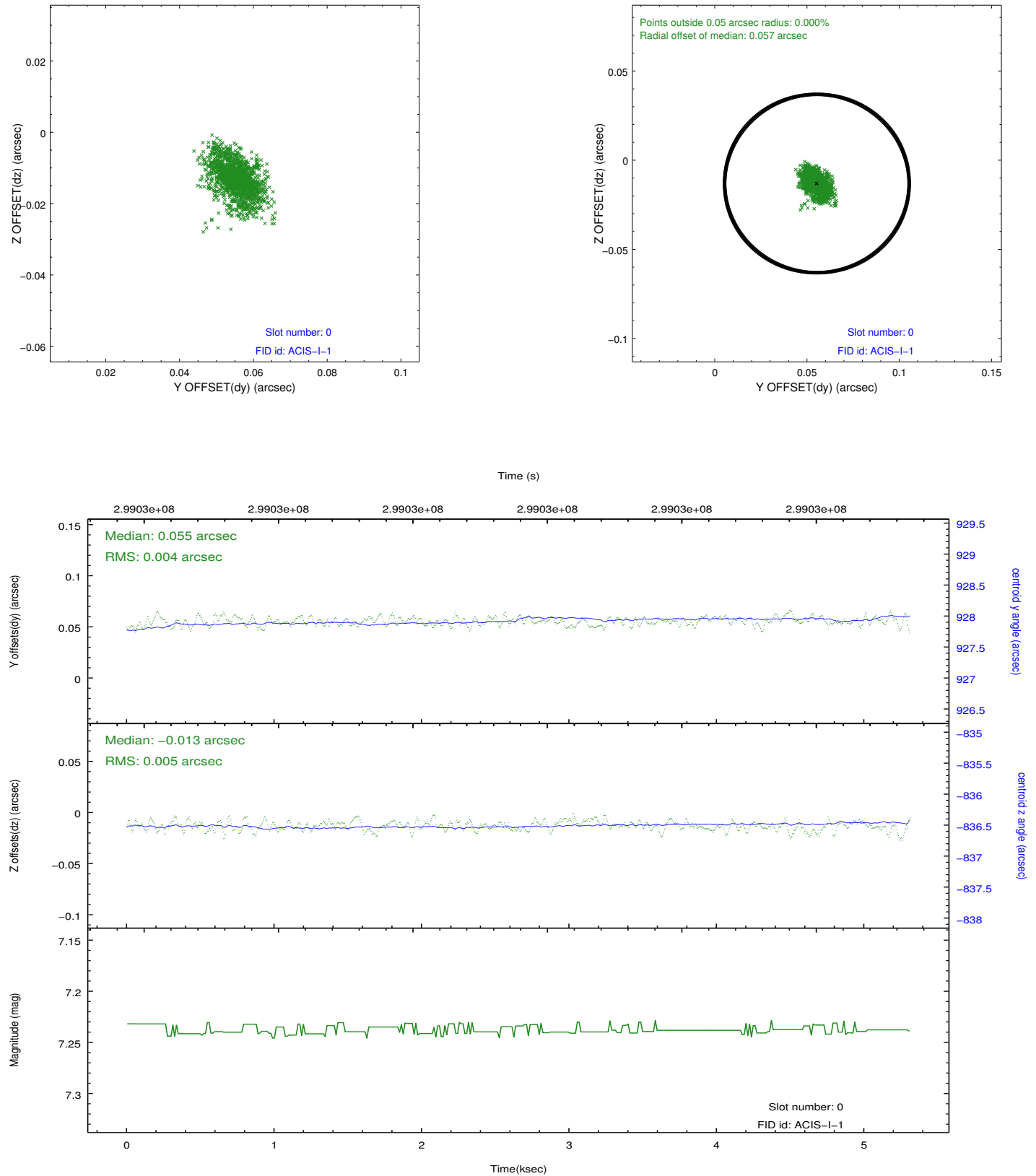


## 2.4.5 Slot 7

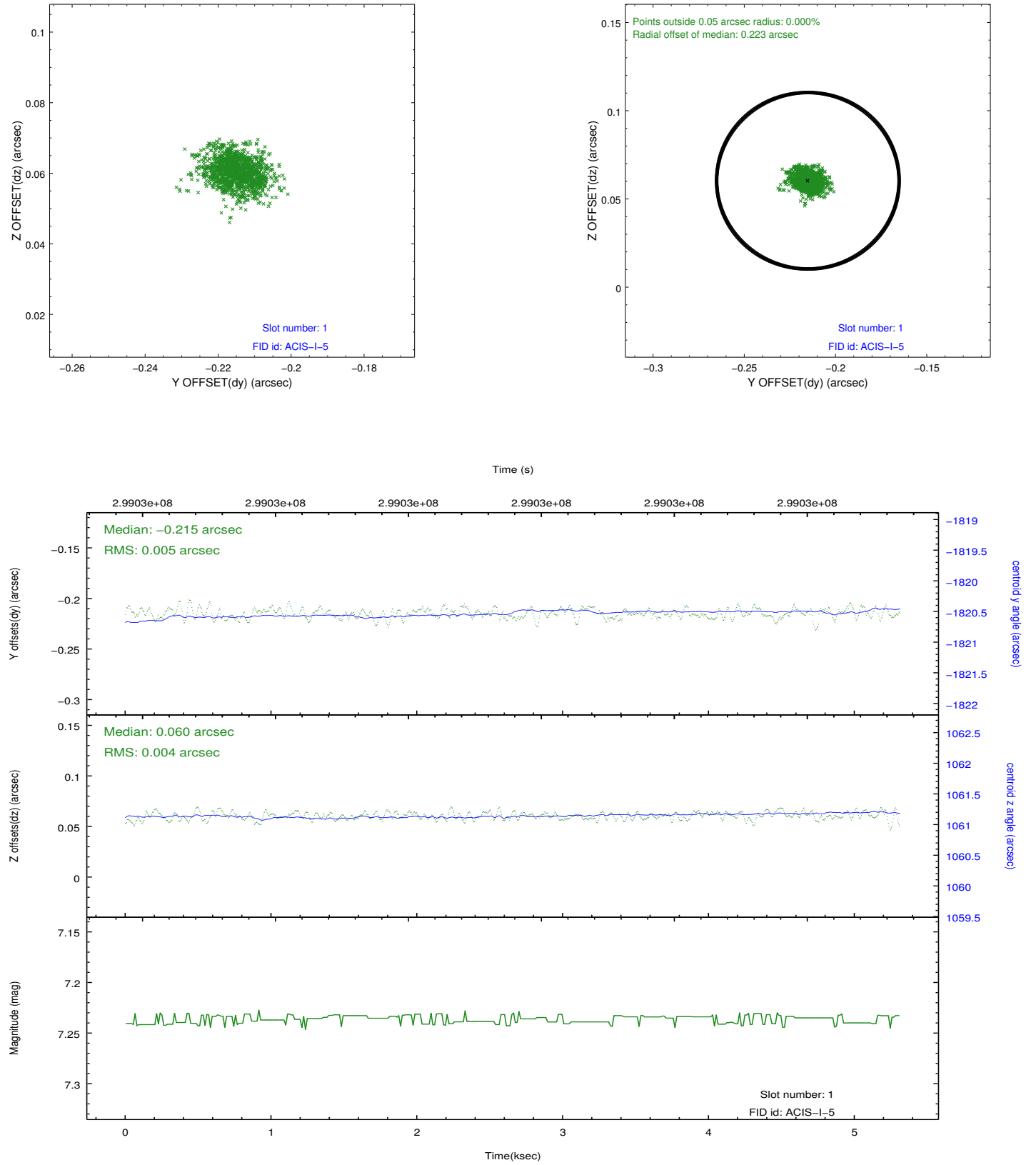


## 2.5 FID Slots

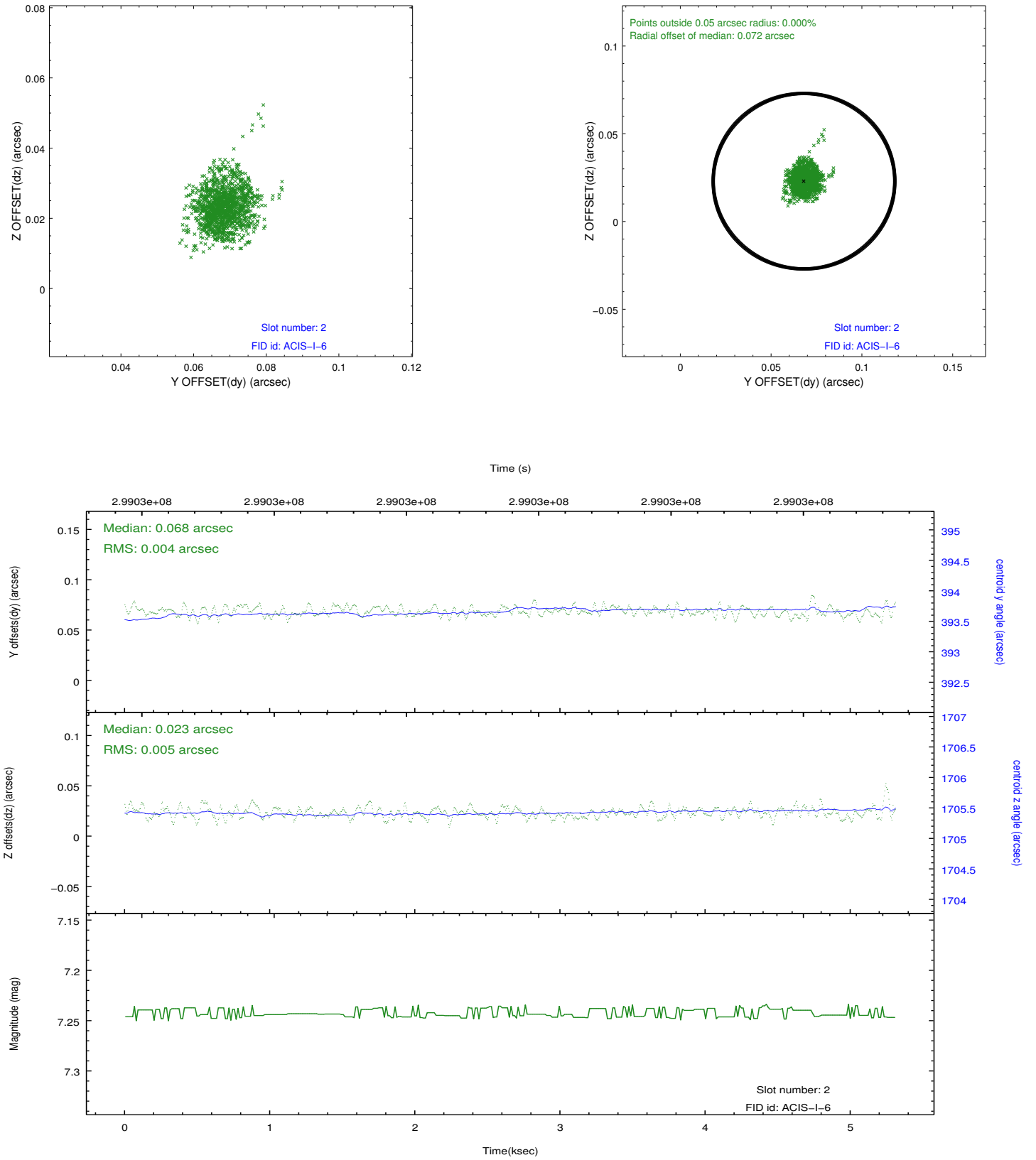
### 2.5.1 Slot 0



## 2.5.2 Slot 1



### 2.5.3 Slot 2



## A Summary

### A.1 Status

V&V Scientist	Jen Lauer
V&V Date (YYYY-MM-DD)	2012.04.27
V&V Edition	1
V&V Disposition and Status	OK
V&V Charge Time	5.05610003

### A.2 Comments