

V&V Reference Report

L2 ASCDS Version : 8.4.4

Observation 7629 - L2 Version 2
Chandra X-Ray Center

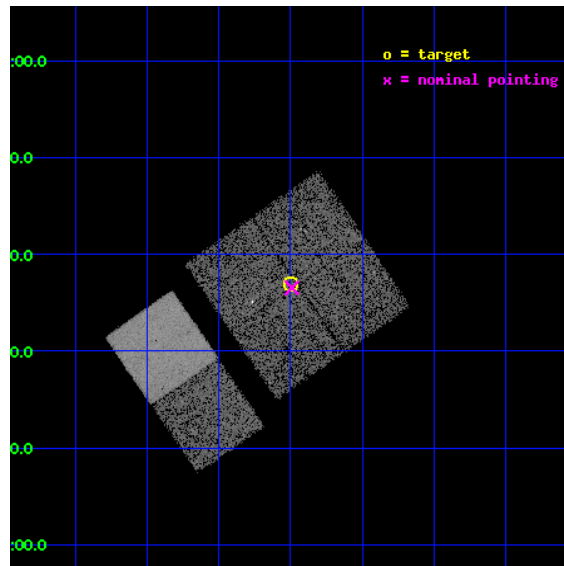
L2 Processing Date : Apr 29 2012

Contents

1	Front	2
2	OBI	3
2.1	OBI	3
2.1.1	Images	3
2.1.2	Bias	3
2.1.3	Parameters	4
2.1.4	Events	4
2.2	Compared Parameters	5
2.3	Aspect	6
2.4	Star Slots	9
2.4.1	Slot 3	9
2.4.2	Slot 4	10
2.4.3	Slot 5	11
2.4.4	Slot 6	12
2.4.5	Slot 7	13
2.5	FID Slots	14
2.5.1	Slot 0	14
2.5.2	Slot 1	15
2.5.3	Slot 2	16
A	Summary	17
A.1	Status	17
A.2	Comments	17

1 Front

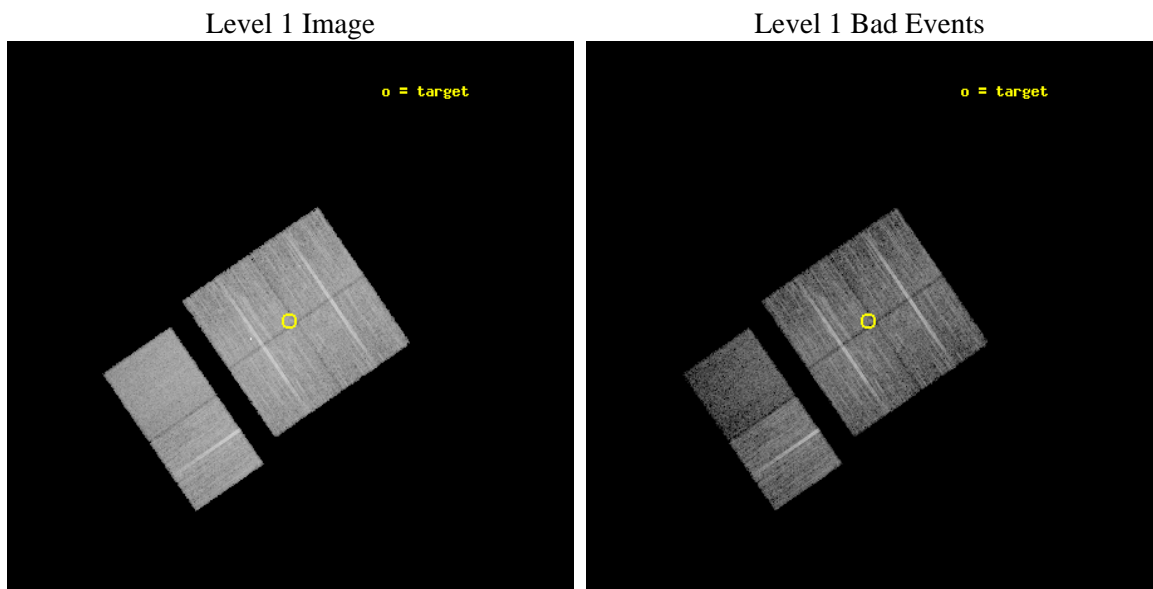
seq_num	500758	Sequence number
obs_id	7629	Observation id
title	A Better Mousetrap: Localizing RRATs with Chandra	Proposal title
observer	Dr. Shami Chatterjee	Principal investigator
object	J1911+00	Source name
dtcycle	0	
cycle	P	events from which exps? Prim/Second/Both
ra_targ	287.75	Observer's specified target RA [deg]
dec_targ	0.616667	Observer's specified target Dec [deg]
ra_nom	287.74764690537	Nominal RA [deg]
dec_nom	0.60897312936027	Nominal Dec [deg]
roll_nom	235.4839582746	Nominal Roll [deg]
revision	2	Processing version of data
ontime	9999.9999628067	Sum of GTIs [s]
livetime	9873.3739420006	Livetime [s]
ontime0	9999.9999628067	Sum of GTIs [s]
ontime1	9999.9999628067	Sum of GTIs [s]
ontime2	9996.75898242	Sum of GTIs [s]
ontime3	9999.9999628067	Sum of GTIs [s]
ontime6	9999.9999628067	Sum of GTIs [s]
ontime7	9996.75898242	Sum of GTIs [s]
l2events	66241	Number of level 2 events



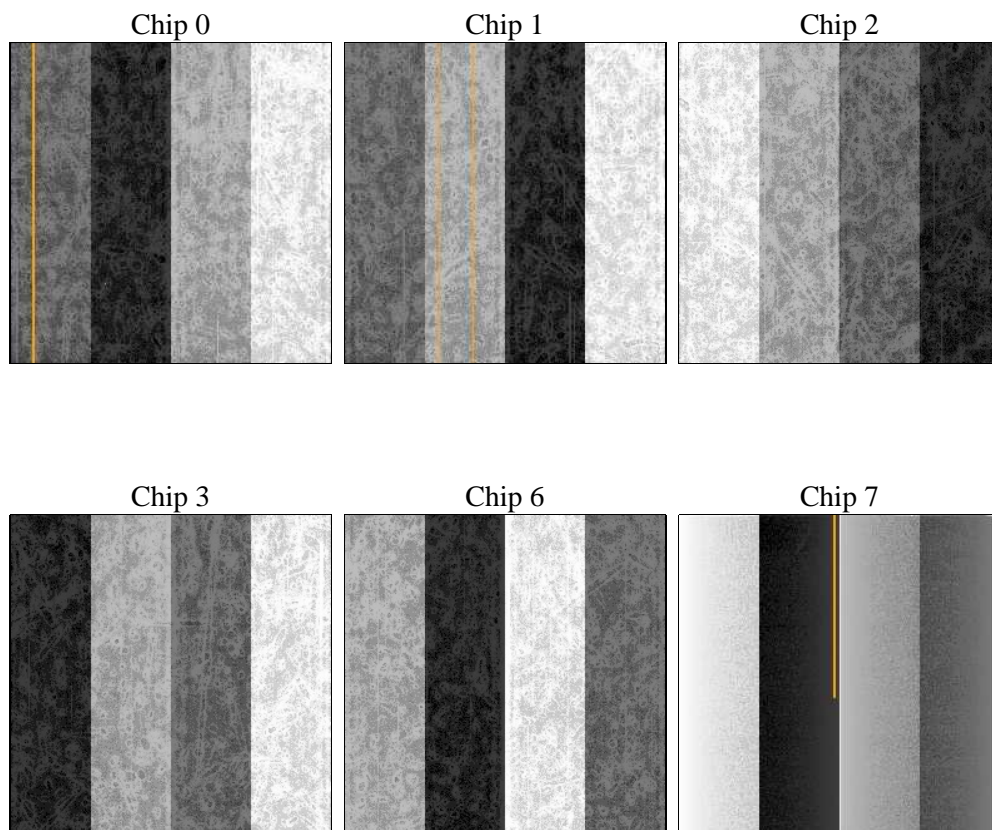
2 OBI

2.1 OBI

2.1.1 Images



2.1.2 Bias



2.1.3 Parameters

obi_num	0	Obi number	sched_exp_time	9956.336000	[s] Scheduled observation exposure time
ascdsver	8.4.4	Processing system revision	ontime	9999.9999628067	Sum of GTIs [s]
caldsver	4.4.9	 	ontime0	9999.9999628067	Sum of GTIs [s]
date	2012-04-29T02:30:03	Date and time of file creation	ontime1	9999.9999628067	Sum of GTIs [s]
revision	2	Processing version of data	ontime2	9996.75898242	Sum of GTIs [s]
			ontime3	9999.9999628067	Sum of GTIs [s]
			ontime6	9999.9999628067	Sum of GTIs [s]
			ontime7	9996.75898242	Sum of GTIs [s]
			l1events	453819	Number of level 1 events

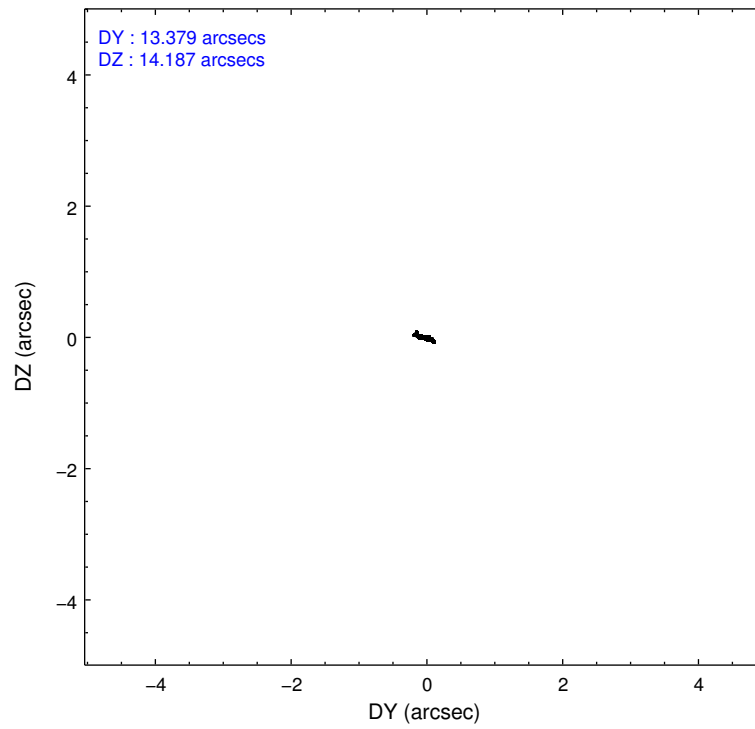
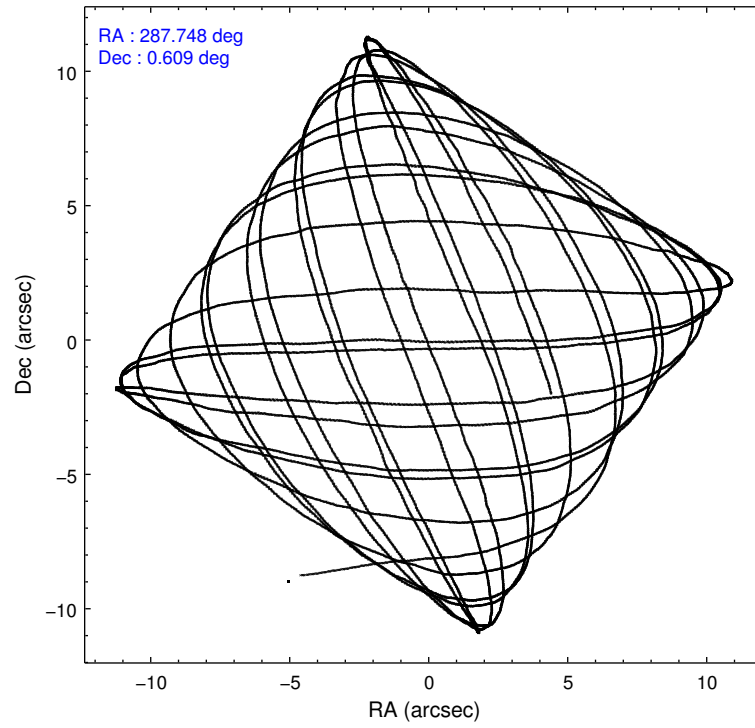
2.1.4 Events

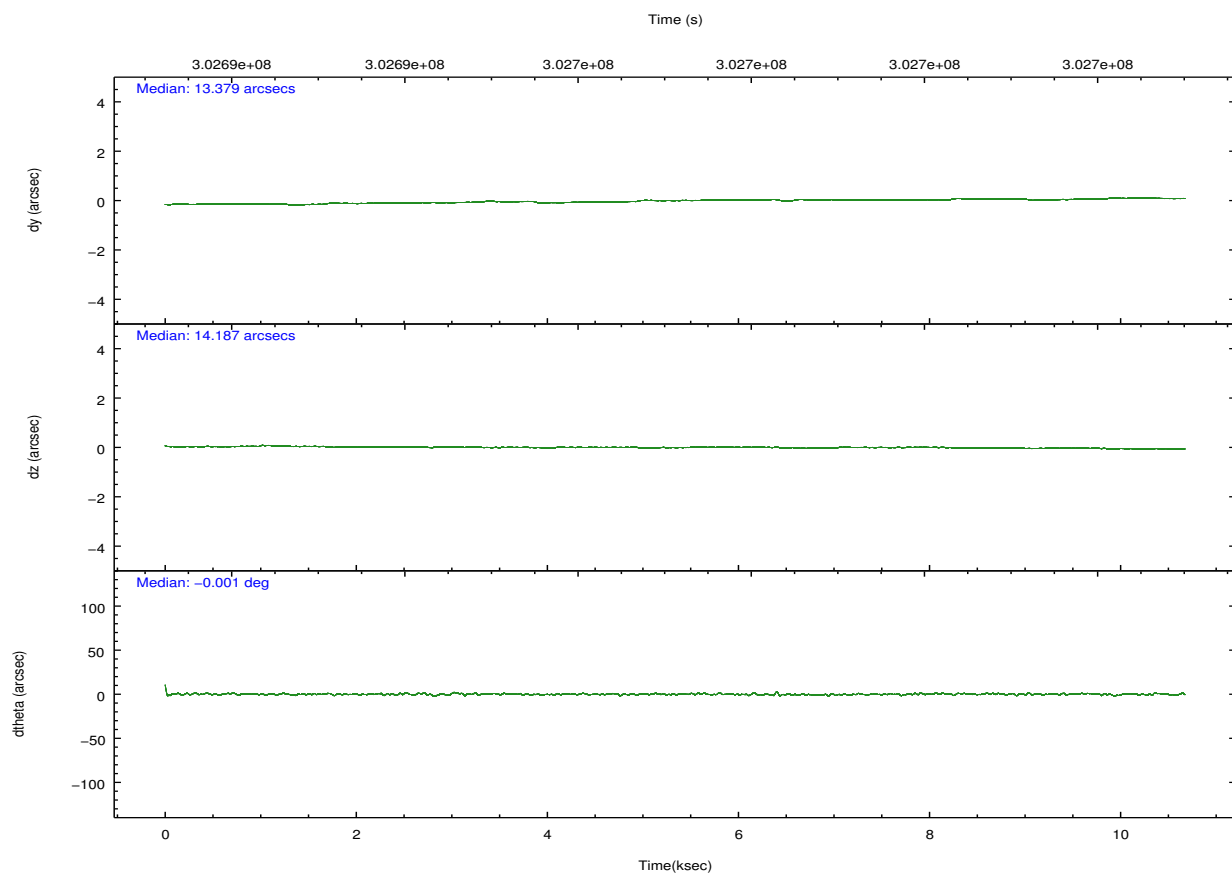
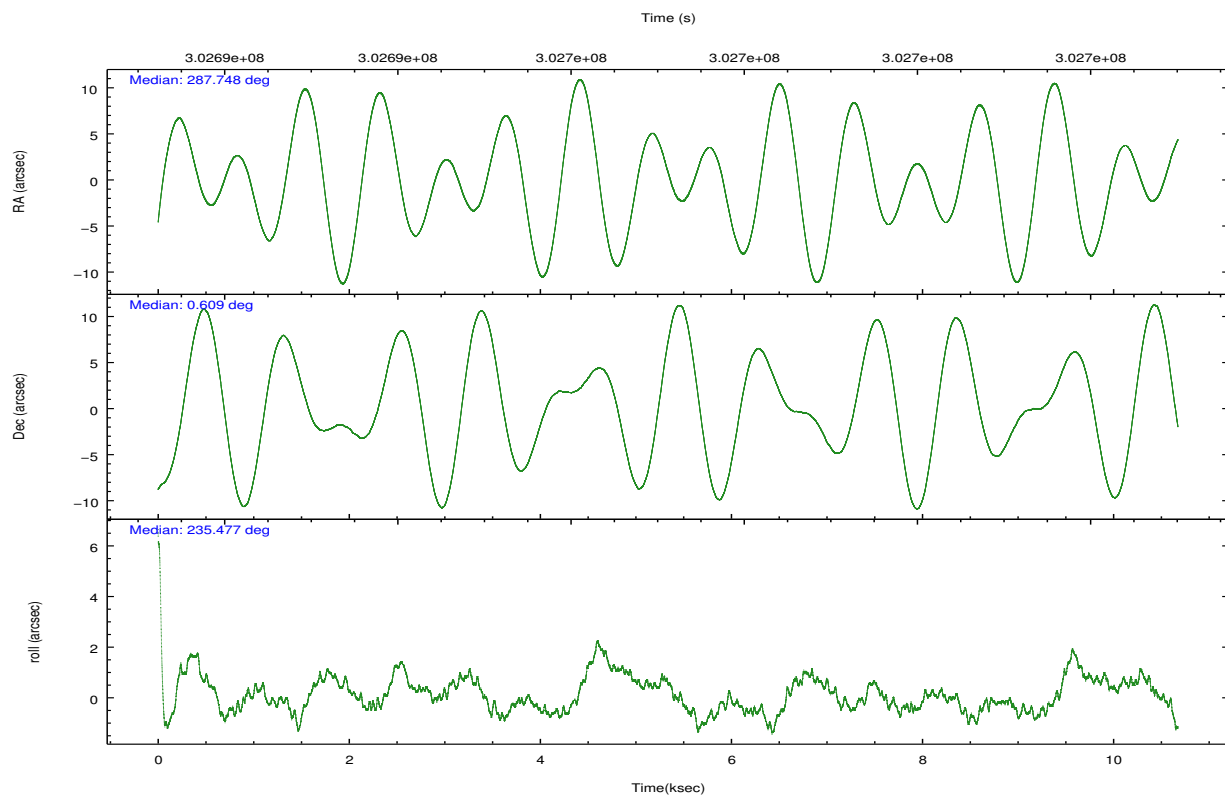
	ccd 0	ccd 1	ccd 2	ccd 3	ccd 6	ccd 7		ccd 0	ccd 1	ccd 2	ccd 3	ccd 6	ccd 7
level 1 events	72179	71594	80716	77707	79962	71661	grade 0 events	2981	2876	2867	3505	2982	3594
rejected events	64511	63622	73334	69789	72055	36283		4%	4%	3%	4%	3%	5%
rejected %	89%	88%	90%	89%	90%	50%	grade 1 events	25	36	42	70	36	105
								0%	0%	0%	0%	0%	0%
							grade 2 events	1749	1684	1722	1502	1719	7539
								2%	2%	2%	1%	2%	10%
							grade 3 events	837	917	772	839	870	3339
								1%	1%	0%	1%	1%	4%
							grade 4 events	811	860	763	783	833	3299
								1%	1%	0%	1%	1%	4%
							grade 5 events	2150	2439	2087	2536	2659	7613
								2%	3%	2%	3%	3%	10%
							grade 6 events	1291	1637	1262	1292	1504	17620
								1%	2%	1%	1%	1%	24%
							grade 7 events	62335	61145	71201	67180	69359	28552
								86%	85%	88%	86%	86%	39%

2.2 Compared Parameters

Parameter	Planned	Actual	Parameter	Planned	Actual
Instrument	ACIS	ACIS	Obspar format version number	7	7
Detector	ACIS-012367	ACIS-012367	Obspar file type	PREDICTED	ACTUAL
Grating	NONE	NONE	Obspar update status	NONE	UPDATED
Data mode	FAINT	FAINT	CCD I0 on	Y	Y
Observation mode	POINTING	POINTING	CCD I1 on	Y	Y
[deg] Pointing RA	287.749665	287.7476469053731	CCD I2 on	Y	Y
[deg] Pointing Dec	0.636368	0.6089731293602658	CCD I3 on	Y	Y
[deg] Pointing Roll	235.275242	235.4839582746043	CCD S0 on	N	N
[mm] SIM focus pos	-0.782348	-0.7809083437167272	CCD S1 on	N	N
[mm] SIM defocus	0	0.001439871863259334	CCD S2 on	O1	Y
[mm] SIM translation stage pos	-233.592463	-233.5874344608287	CCD S3 on	O2	Y
[mm] SIM translation stage offset	0	-0.005018542100998502	CCD S4 on	N	N
[s] Observation start time (MET)	302692493.184000	302691219.73378	CCD S5 on	N	N
Observation start date	2007-08-05T09:13:48	2007-08-05T08:53:39	Number of optional ACIS chips dropped	0	0
[s] Observation end time (MET)	302702450.184000	302702684.87183	On-chip summing requested	N	N
Observation end date	2007-08-05T11:59:45	2007-08-05T12:04:44	Subarray requested	NONE	NONE
Read mode	TIMED	TIMED	Alternating exposures requested	N	N
			[s] Primary exposure time	0.000000	3.2

2.3 Aspect



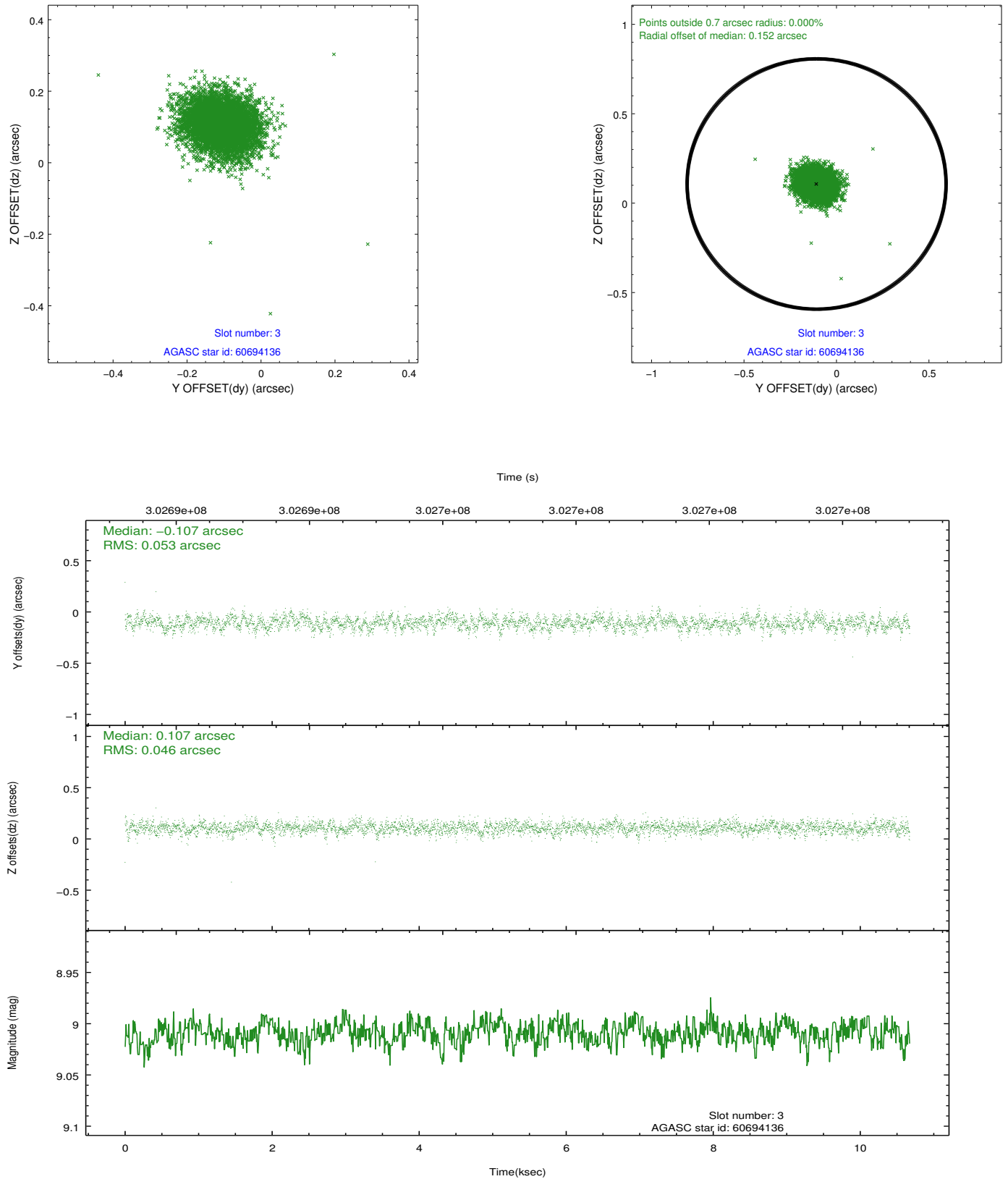


Slot Statistics

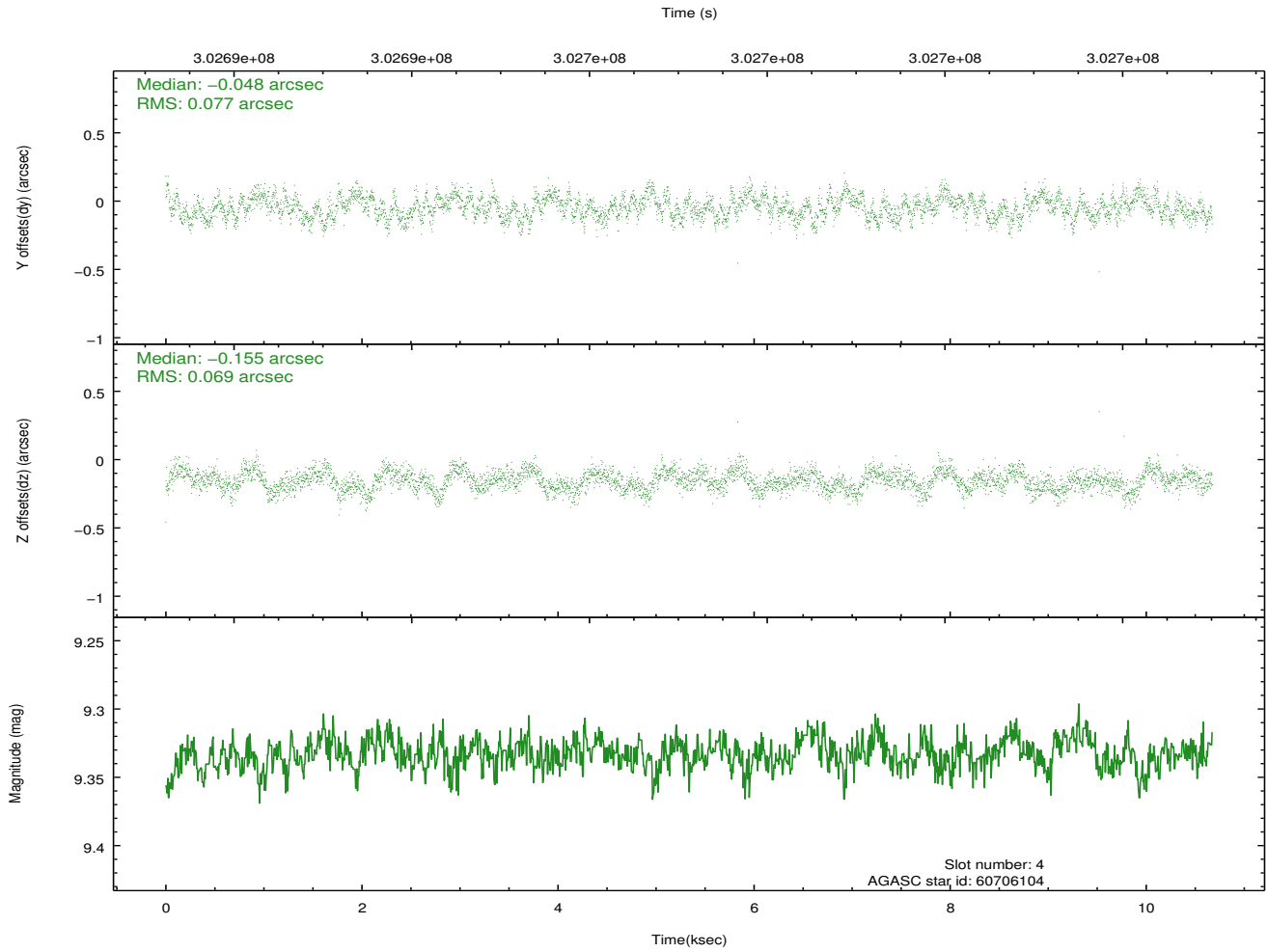
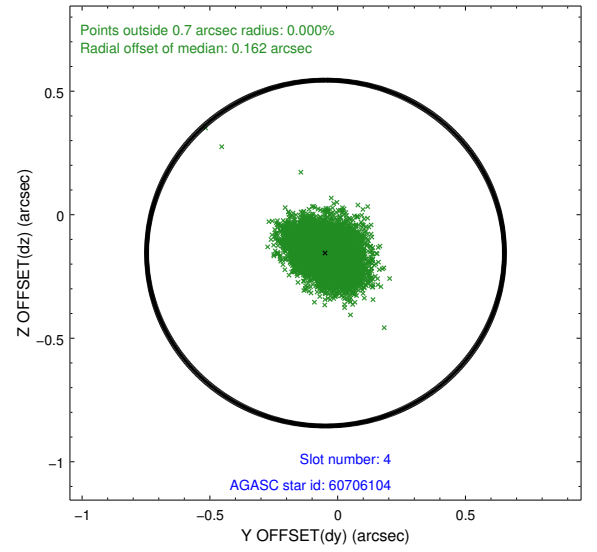
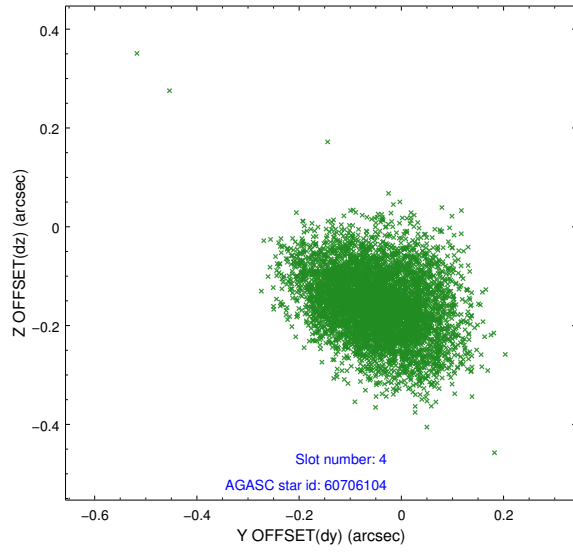
slot	status	id	mag	n_pts	med_dy	med_dz	dr1	dr2	ra	dec	mean_y	mean_z
0	FID	ACIS-I-2	7.14	2604	-0.079	-0.051	0.016	0.027	0.000000	0.000000	-768.12	-844.16
1	FID	ACIS-I-4	7.15	2603	0.239	0.064	0.009	0.013	0.000000	0.000000	2146.07	1061.82
2	FID	ACIS-I-5	7.22	2603	-0.261	0.056	0.011	0.019	0.000000	0.000000	-1821.46	1060.30
3	GUIDE	60694136	9.01	5205	-0.107	0.107	0.073	0.119	287.735532	1.421294	-2292.94	-1651.71
4	GUIDE	60706104	9.33	5201	-0.048	-0.155	0.109	0.178	288.572310	0.711214	-1908.82	2280.21
5	GUIDE	60708936	9.24	5202	0.186	-0.005	0.099	0.154	287.407925	0.924863	-152.44	-1601.91
6	GUIDE	60718872	9.39	5200	-0.017	-0.084	0.104	0.166	287.679270	0.108754	1705.81	873.86
7	GUIDE	60699528	8.93	5198	-0.014	0.137	0.082	0.134	287.344521	1.231468	-929.16	-2418.40

2.4 Star Slots

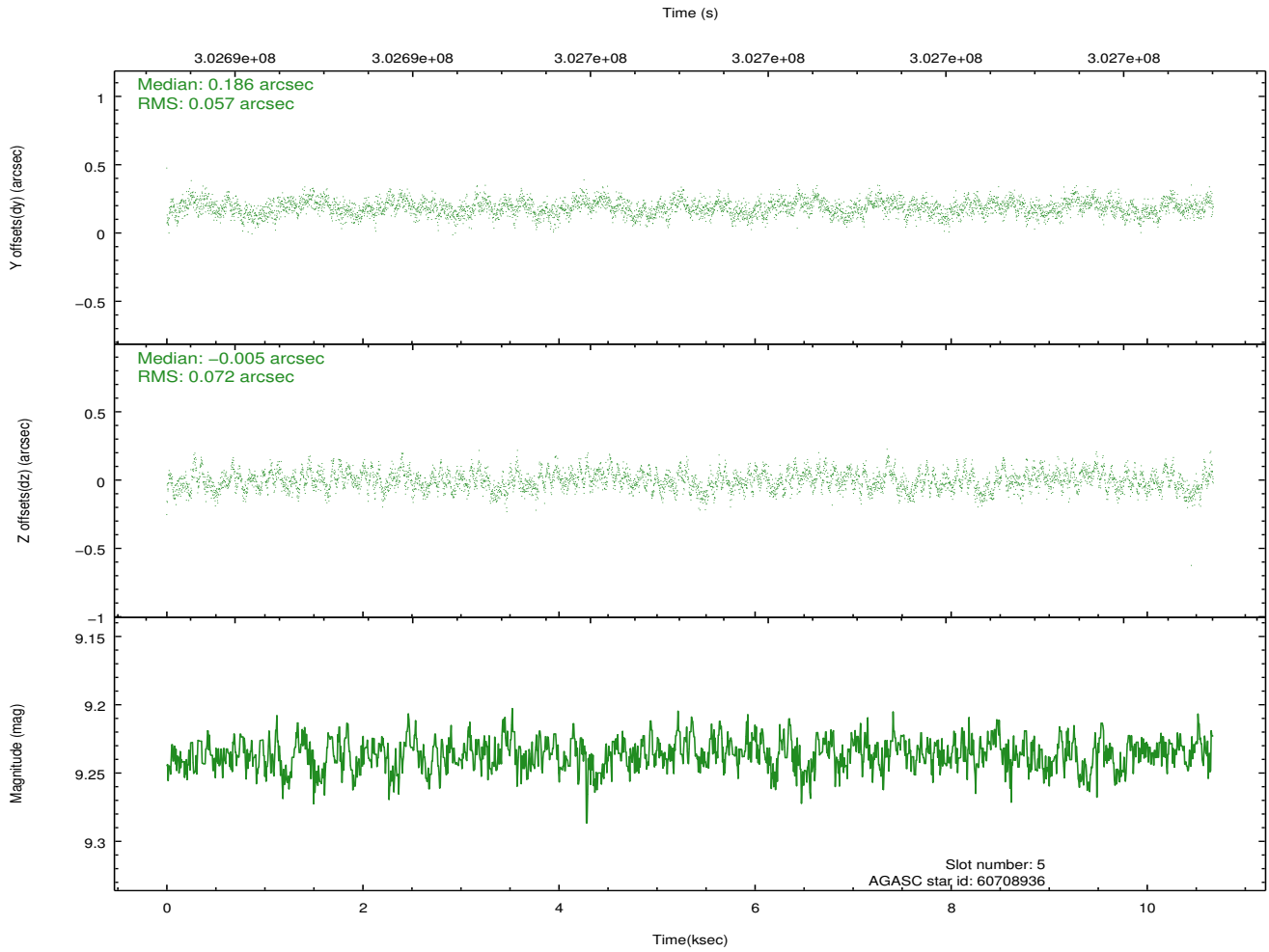
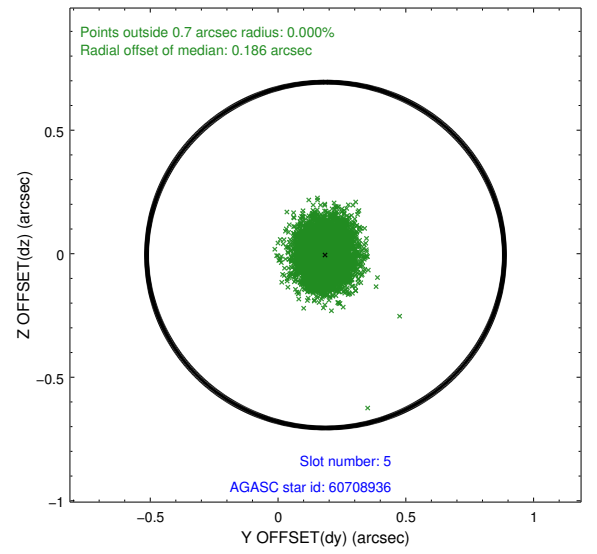
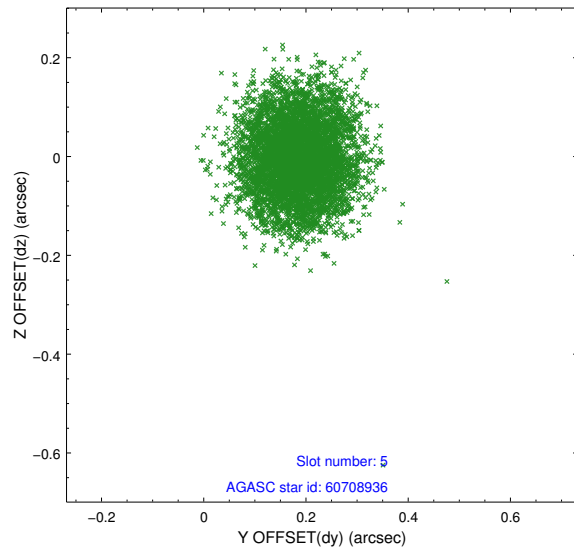
2.4.1 Slot 3



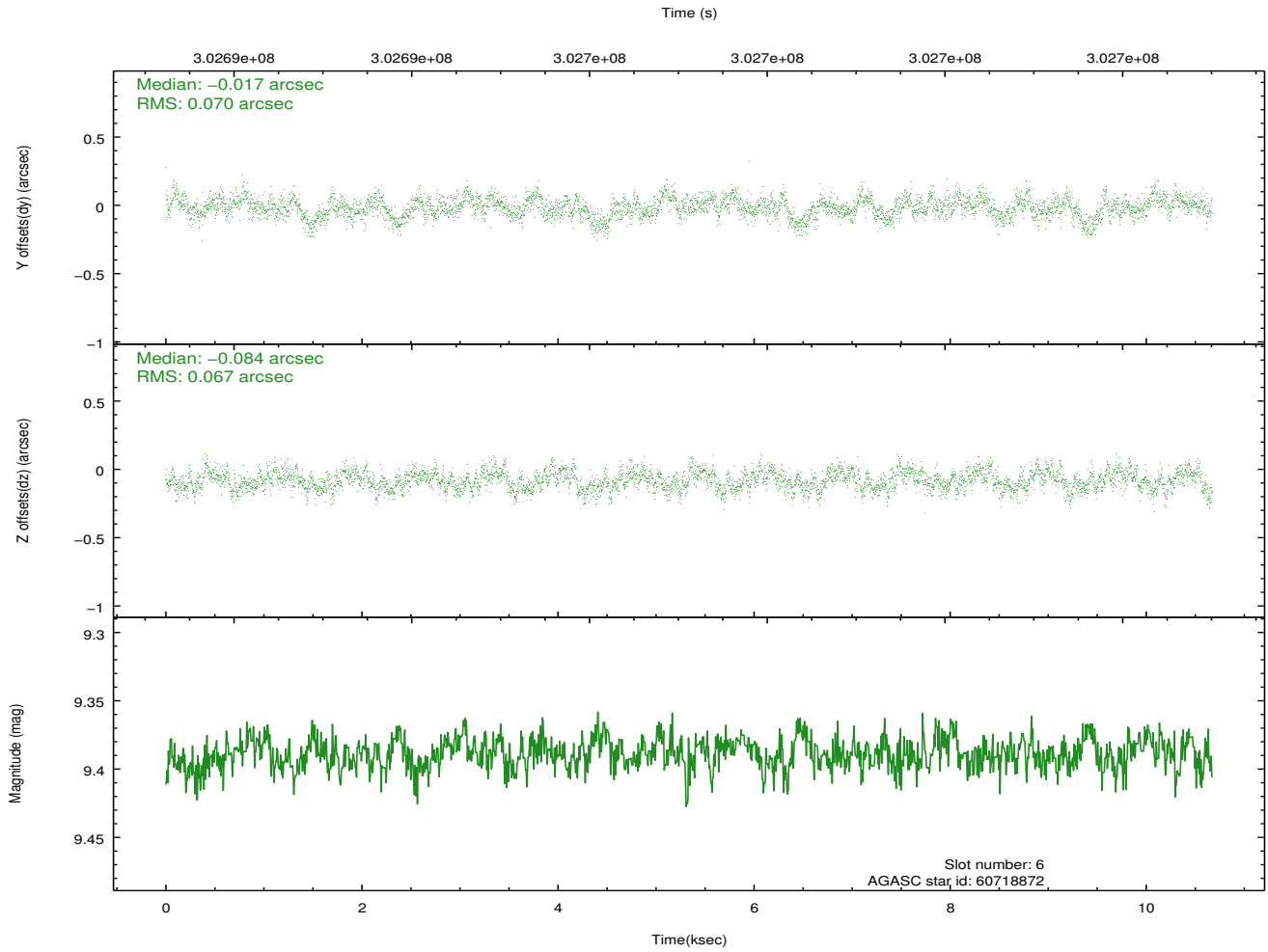
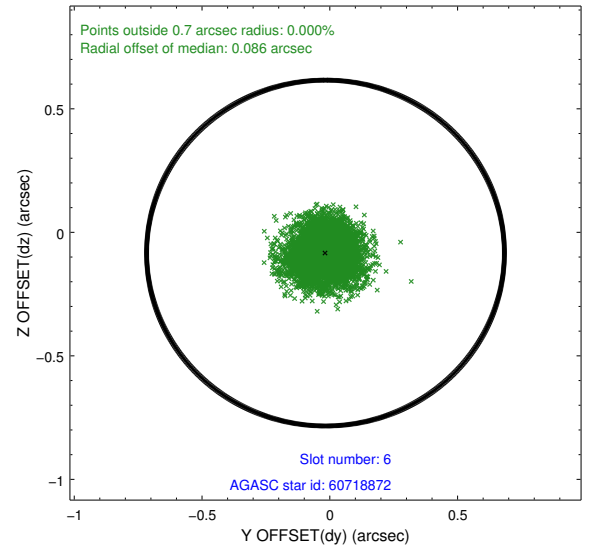
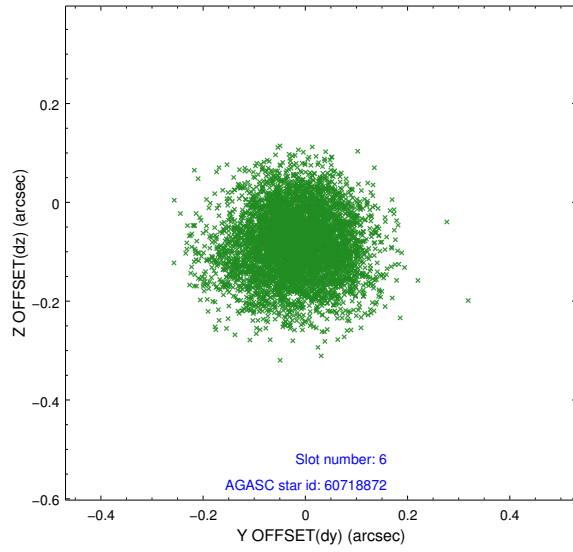
2.4.2 Slot 4



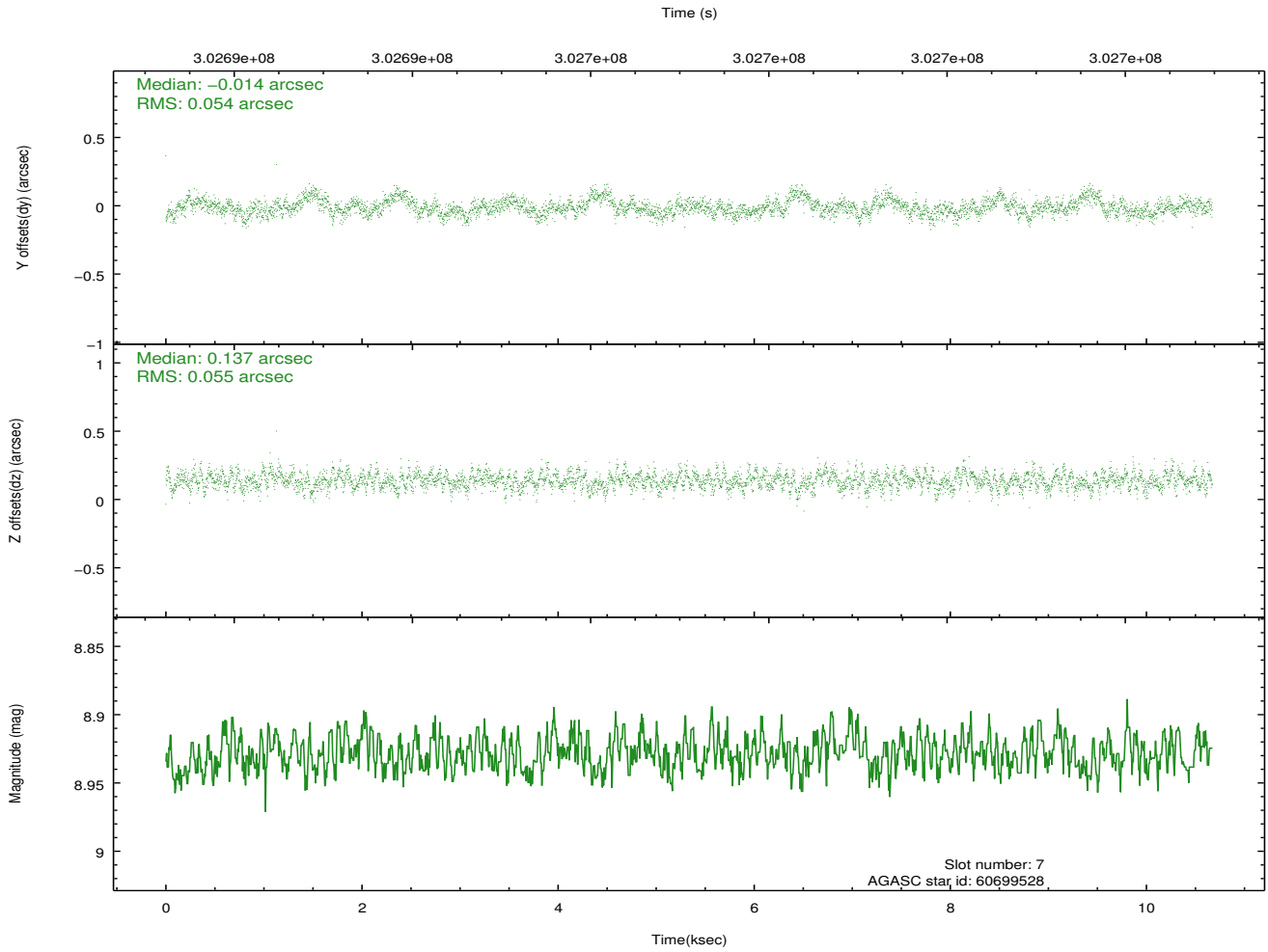
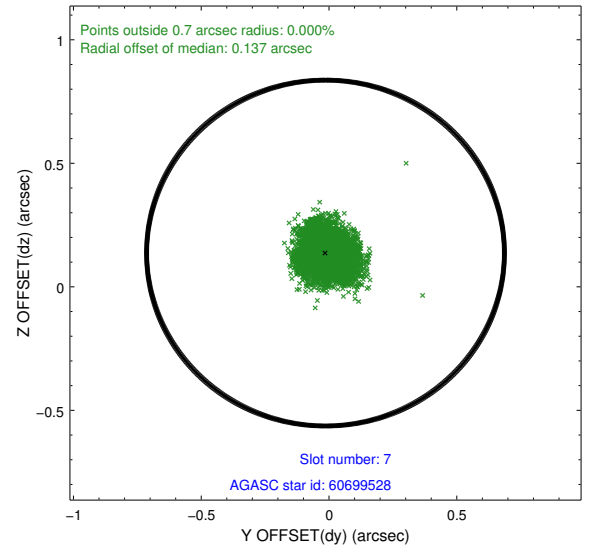
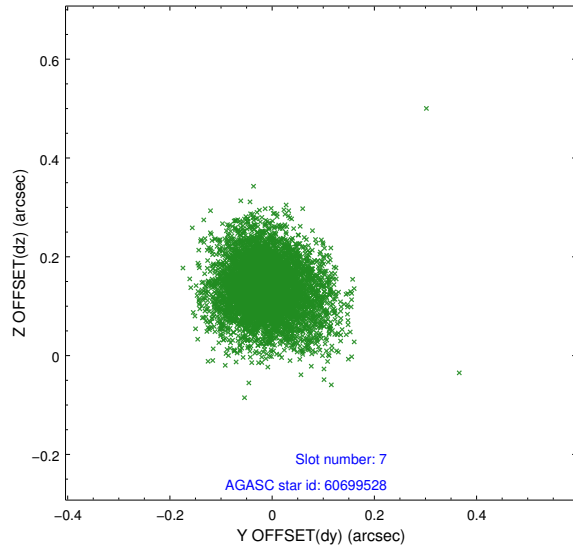
2.4.3 Slot 5



2.4.4 Slot 6

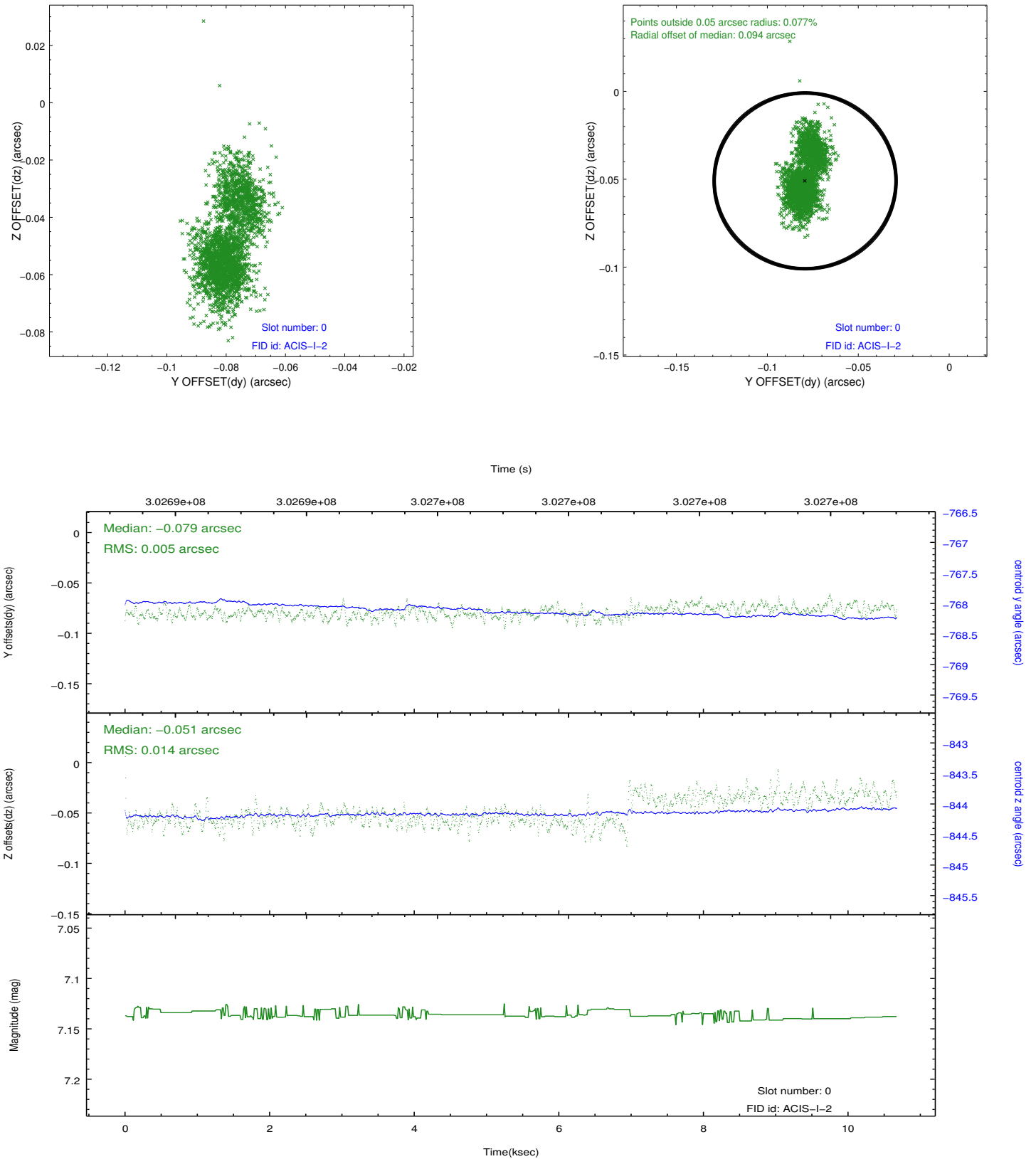


2.4.5 Slot 7

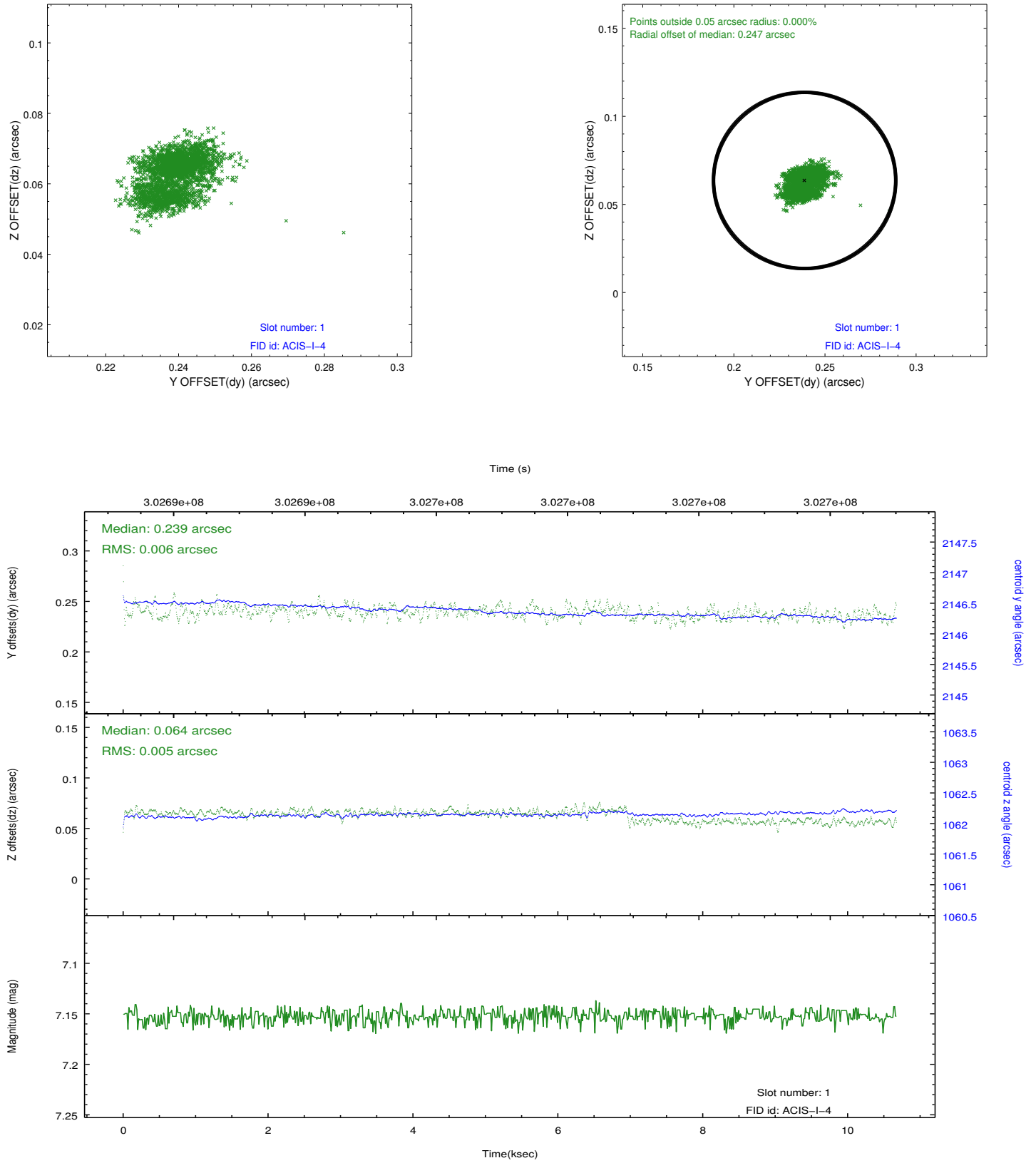


2.5 FID Slots

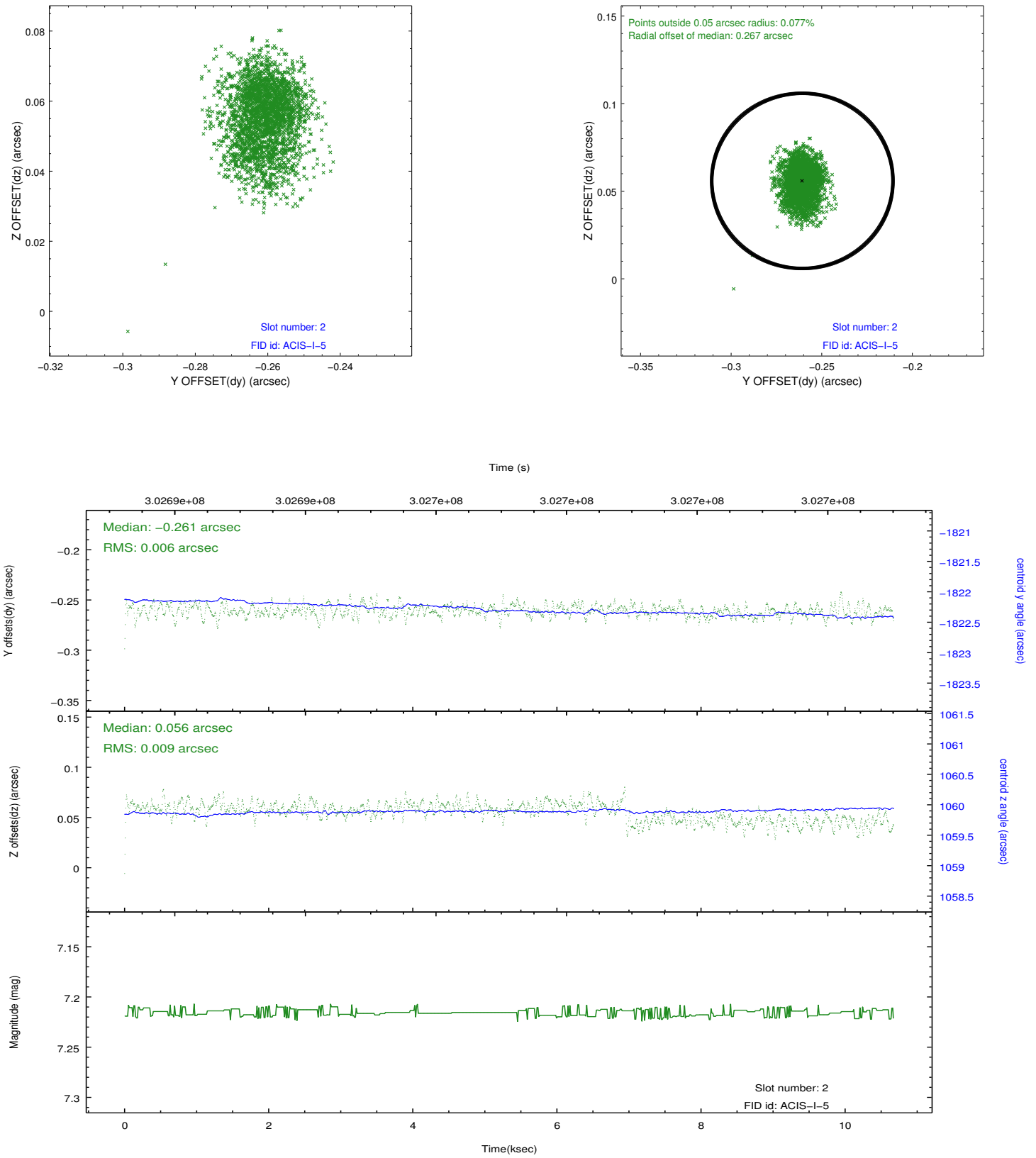
2.5.1 Slot 0



2.5.2 Slot 1



2.5.3 Slot 2



A Summary

A.1 Status

V&V Scientist	Jen Lauer
V&V Date (YYYY-MM-DD)	2012.05.01
V&V Edition	1
V&V Disposition and Status	OK
V&V Charge Time	9.99999996

A.2 Comments