

V&V Reference Report

L2 ASCDS Version : 8.4.4

Observation 7459 - L2 Version 3
Chandra X-Ray Center

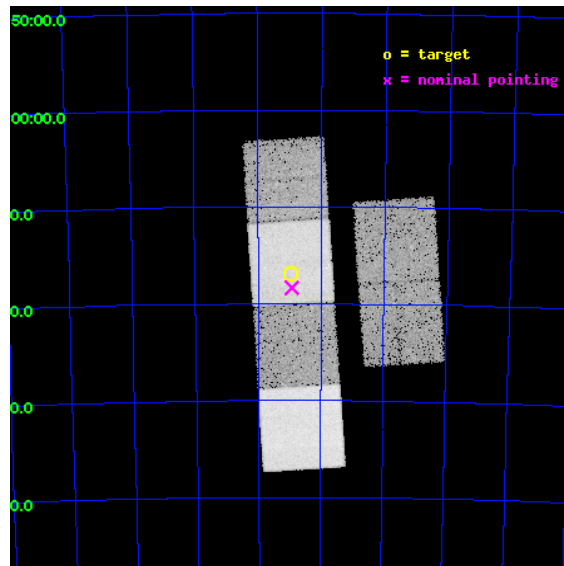
L2 Processing Date : Apr 24 2012

Contents

1	Front	2
2	OBI	3
2.1	OBI	3
2.1.1	Images	3
2.1.2	Bias	3
2.1.3	Parameters	4
2.1.4	Events	4
2.2	Compared Parameters	5
2.3	Aspect	6
2.4	Star Slots	9
2.4.1	Slot 3	9
2.4.2	Slot 4	10
2.4.3	Slot 5	11
2.4.4	Slot 6	12
2.4.5	Slot 7	13
2.5	FID Slots	14
2.5.1	Slot 0	14
2.5.2	Slot 1	15
2.5.3	Slot 2	16
A	Summary	17
A.1	Status	17
A.2	Comments	17

1 Front

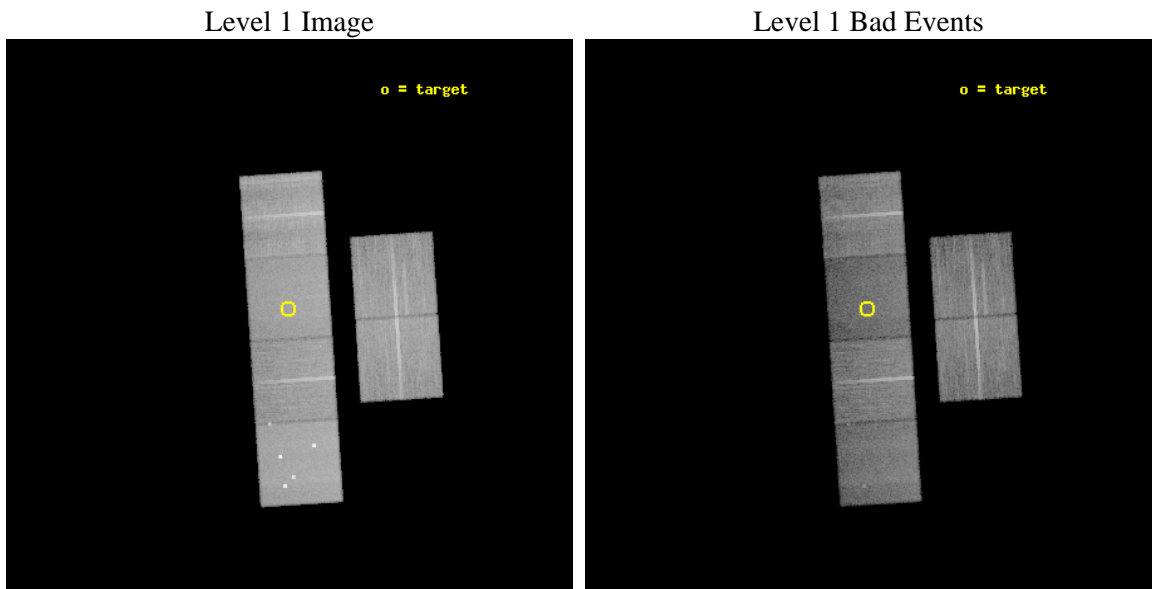
seq_num	300193	Sequence number
obs_id	7459	Observation id
title	Primordial formation of close binaries in globular clusters with low density cores	Proposal title
observer	Prof. Albert Kong	Principal investigator
object	E3	Source name
dtcycle	0	
cycle	P	events from which exps? Prim/Second/Both
ra_targ	140.247083	Observer's specified target RA [deg]
dec_targ	-77.2825	Observer's specified target Dec [deg]
ra_nom	140.23251484989	Nominal RA [deg]
dec_nom	-77.30589328197	Nominal Dec [deg]
roll_nom	266.2266309636	Nominal Roll [deg]
revision	3	Processing version of data
ontime	20111.665693104	Sum of GTIs [s]
livetime	19856.999672307	Livetime [s]
ontime2	20105.224762559	Sum of GTIs [s]
ontime3	20111.542573094	Sum of GTIs [s]
ontime5	20111.624653101	Sum of GTIs [s]
ontime6	20108.34263283	Sum of GTIs [s]
ontime7	20111.665693104	Sum of GTIs [s]
ontime8	20111.501533091	Sum of GTIs [s]
l2events	238315	Number of level 2 events



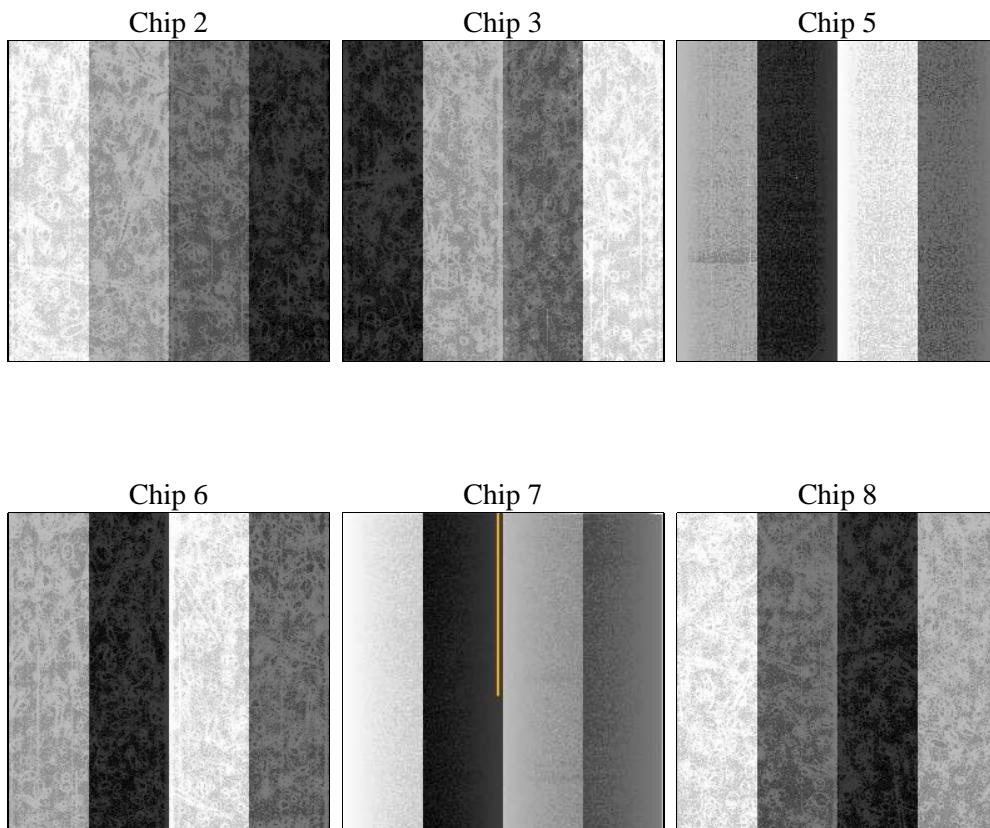
2 OBI

2.1 OBI

2.1.1 Images



2.1.2 Bias



2.1.3 Parameters

obi_num	0	Obi number	sched_exp_time	20000.000000	[s] Scheduled observation exposure time
ascdsver	8.4.4	Processing system revision	ontime	20111.665693104	Sum of GTIs [s]
caldsver	4.4.9	 	ontime2	20105.224762559	Sum of GTIs [s]
date	2012-04-24T21:27:44	Date and time of file creation	ontime3	20111.542573094	Sum of GTIs [s]
revision	3	Processing version of data	ontime5	20111.624653101	Sum of GTIs [s]
			ontime6	20108.34263283	Sum of GTIs [s]
			ontime7	20111.665693104	Sum of GTIs [s]
			ontime8	20111.501533091	Sum of GTIs [s]
			l1events	1116225	Number of level 1 events

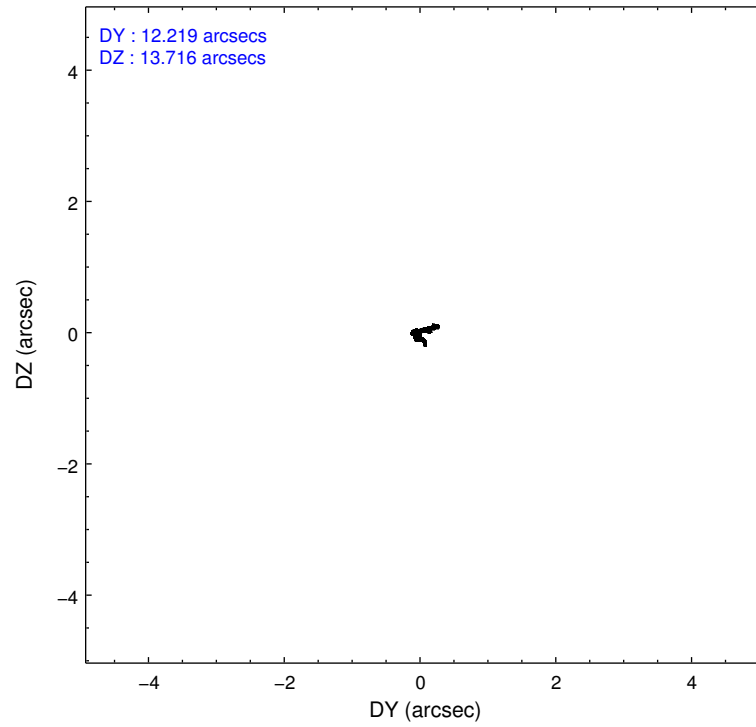
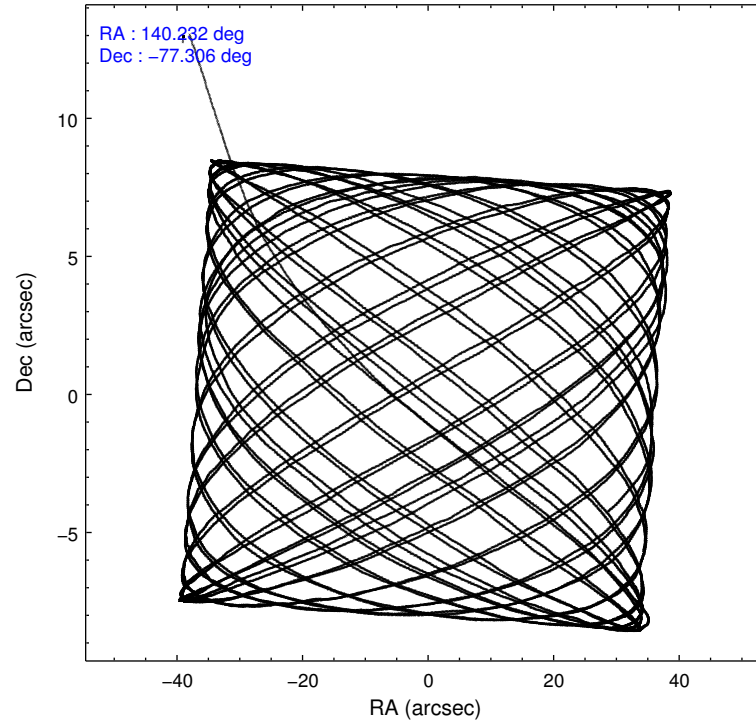
2.1.4 Events

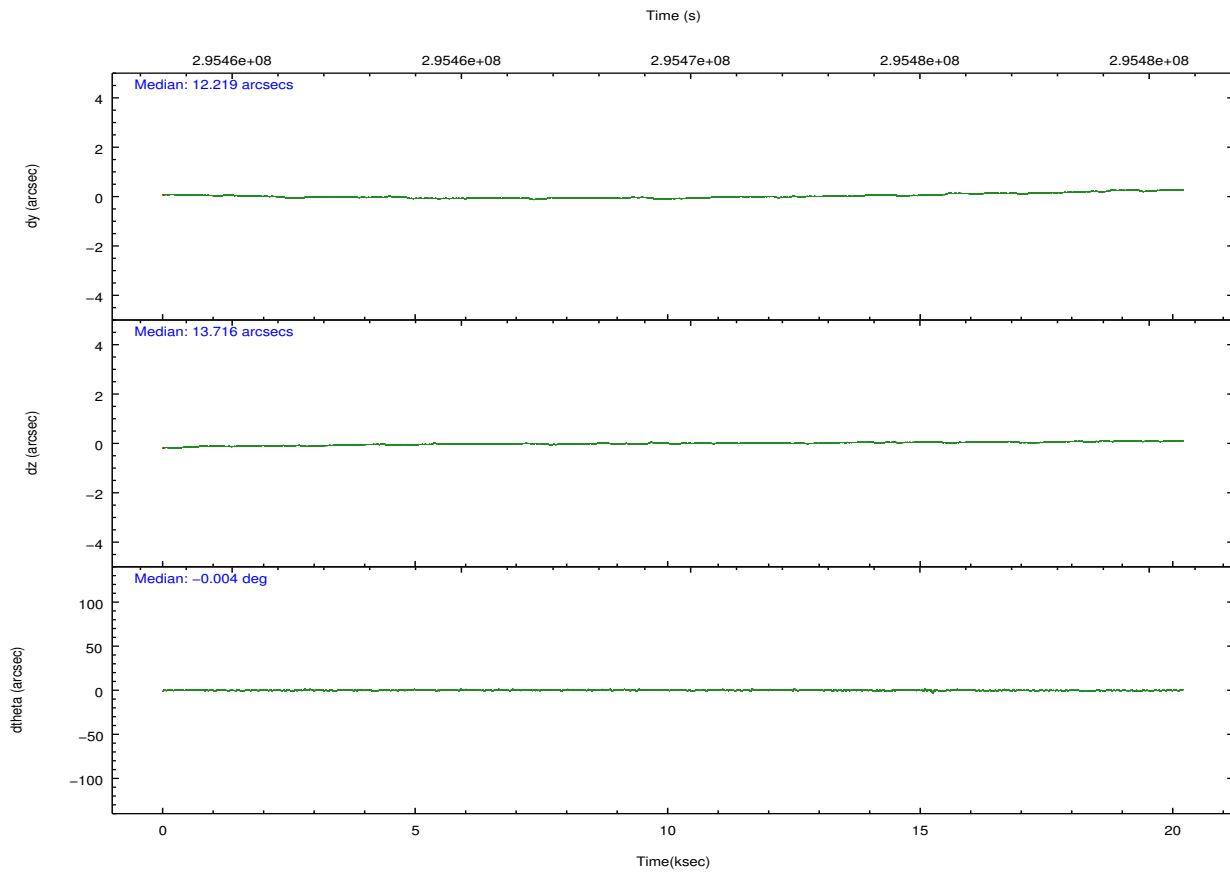
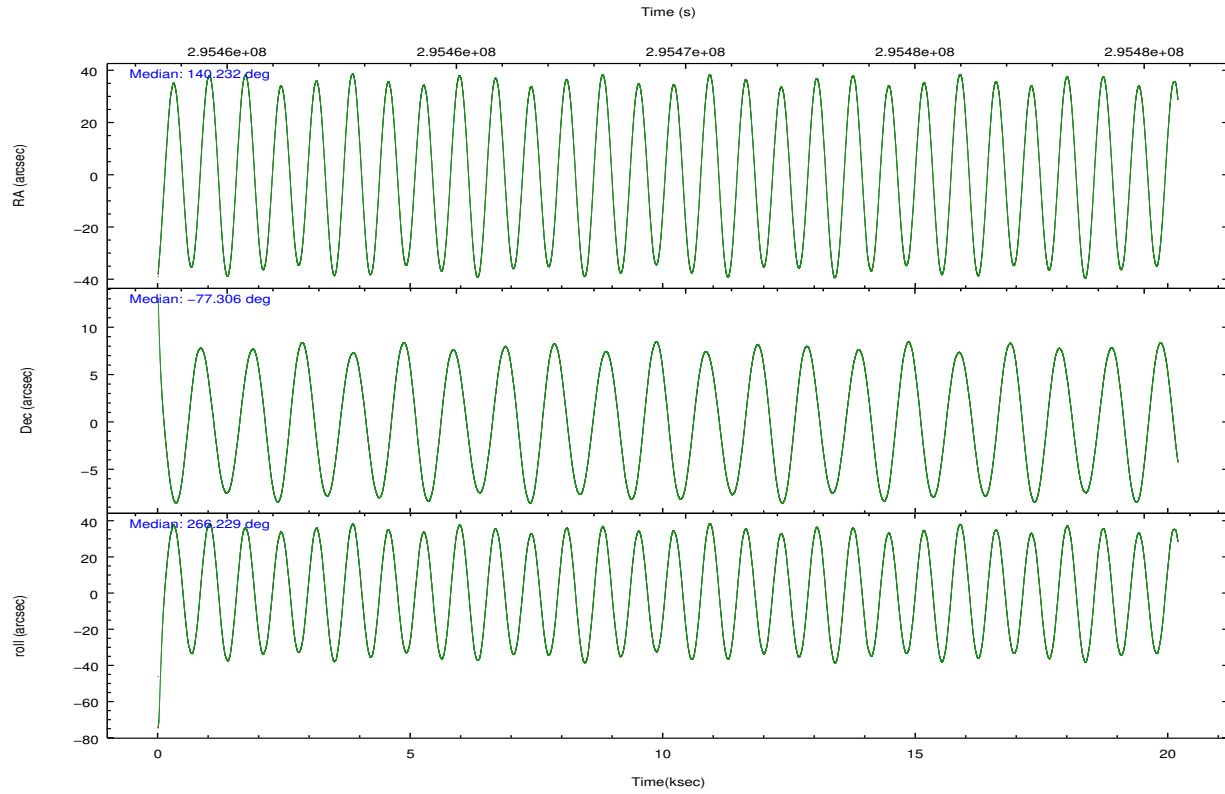
	ccd 2	ccd 3	ccd 5	ccd 6	ccd 7	ccd 8		ccd 2	ccd 3	ccd 5	ccd 6	ccd 7	ccd 8
level 1 events	176796	160364	235352	164679	175167	203867	grade 0 events	5570	5169	22754	5921	7599	13480
rejected events	161133	145685	109159	147952	94596	156095		3%	3%	9%	3%	4%	6%
rejected %	91%	90%	46%	89%	54%	76%	grade 1 events	98	95	698	104	221	172
								0%	0%	0%	0%	0%	0%
							grade 2 events	3811	3106	36689	3631	16350	11162
								2%	1%	15%	2%	9%	5%
							grade 3 events	1678	1722	4888	1839	7499	5109
								0%	1%	2%	1%	4%	2%
							grade 4 events	1745	1645	4721	1825	7383	4655
								0%	1%	2%	1%	4%	2%
							grade 5 events	5136	6176	17495	6359	18574	9085
								2%	3%	7%	3%	10%	4%
							grade 6 events	2863	3045	57176	3518	41760	13390
								1%	1%	24%	2%	23%	6%
							grade 7 events	155895	139406	90931	141482	75781	146814
								88%	86%	38%	85%	43%	72%

2.2 Compared Parameters

Parameter	Planned	Actual	Parameter	Planned	Actual
Instrument	ACIS	ACIS	Obspar format version number	7	7
Detector	ACIS-235678	ACIS-235678	Obspar file type	PREDICTED	ACTUAL
Grating	NONE	NONE	Obspar update status	NONE	UPDATED
Data mode	VFAINT	VFAINT	CCD I0 on	N	N
Observation mode	POINTING	POINTING	CCD I1 on	N	N
[deg] Pointing RA	140.176057	140.2325148498922	CCD I2 on	O1	Y
[deg] Pointing Dec	-77.281520	-77.30589328197024	CCD I3 on	O2	Y
[deg] Pointing Roll	266.014955	266.2266309636045	CCD S0 on	N	N
[mm] SIM focus pos	-0.684267	-0.6828225247311905	CCD S1 on	Y	Y
[mm] SIM defocus	0	0.001444936568705701	CCD S2 on	Y	Y
[mm] SIM translation stage pos	-190.132523	-190.1400660498719	CCD S3 on	Y	Y
[mm] SIM translation stage offset	0	0.00754346686406393	CCD S4 on	Y	Y
[s] Observation start time (MET)	295459721.184000	295458681.52514	CCD S5 on	N	N
Observation start date	2007-05-13T16:07:36	2007-05-13T15:51:21	Number of optional ACIS chips dropped	0	0
[s] Observation end time (MET)	295479721.184000	295480288.01368	On-chip summing requested	N	N
Observation end date	2007-05-13T21:40:56	2007-05-13T21:51:28	Subarray requested	NONE	NONE
Read mode	TIMED	TIMED	Alternating exposures requested	N	N
			[s] Primary exposure time	0.000000	3.2

2.3 Aspect



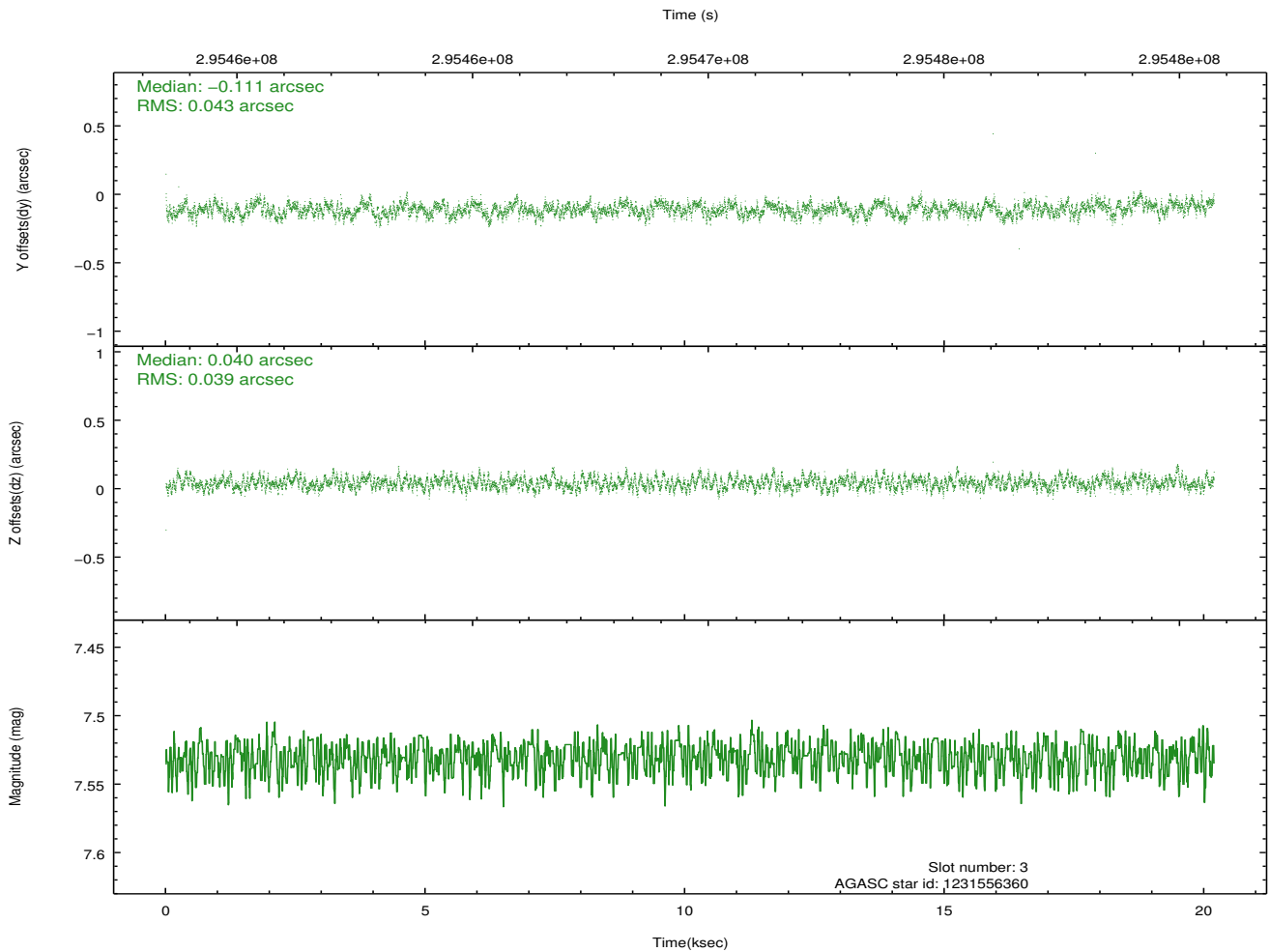
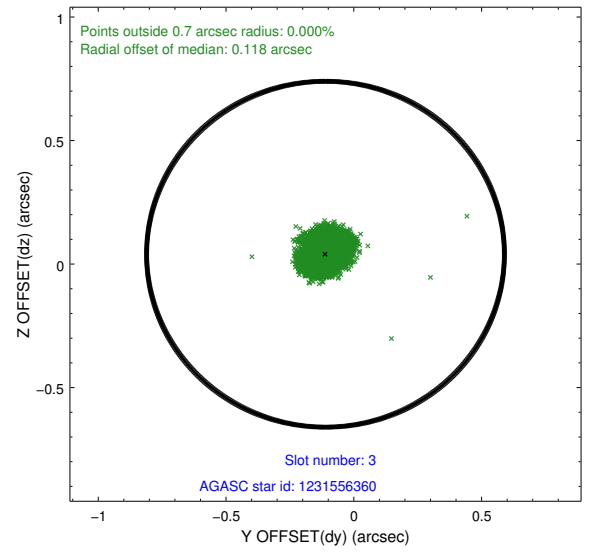
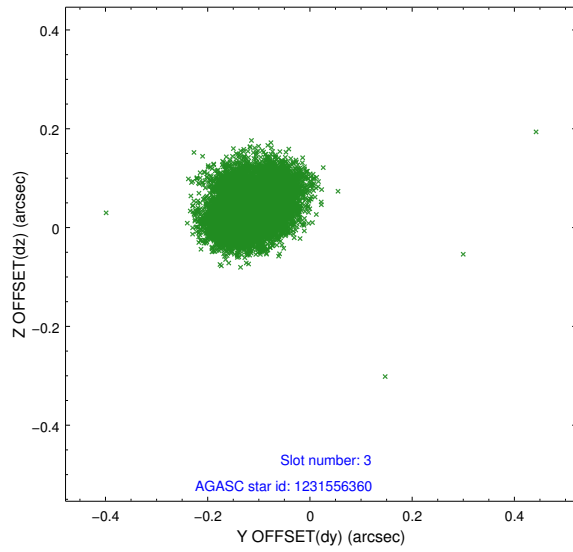


Slot Statistics

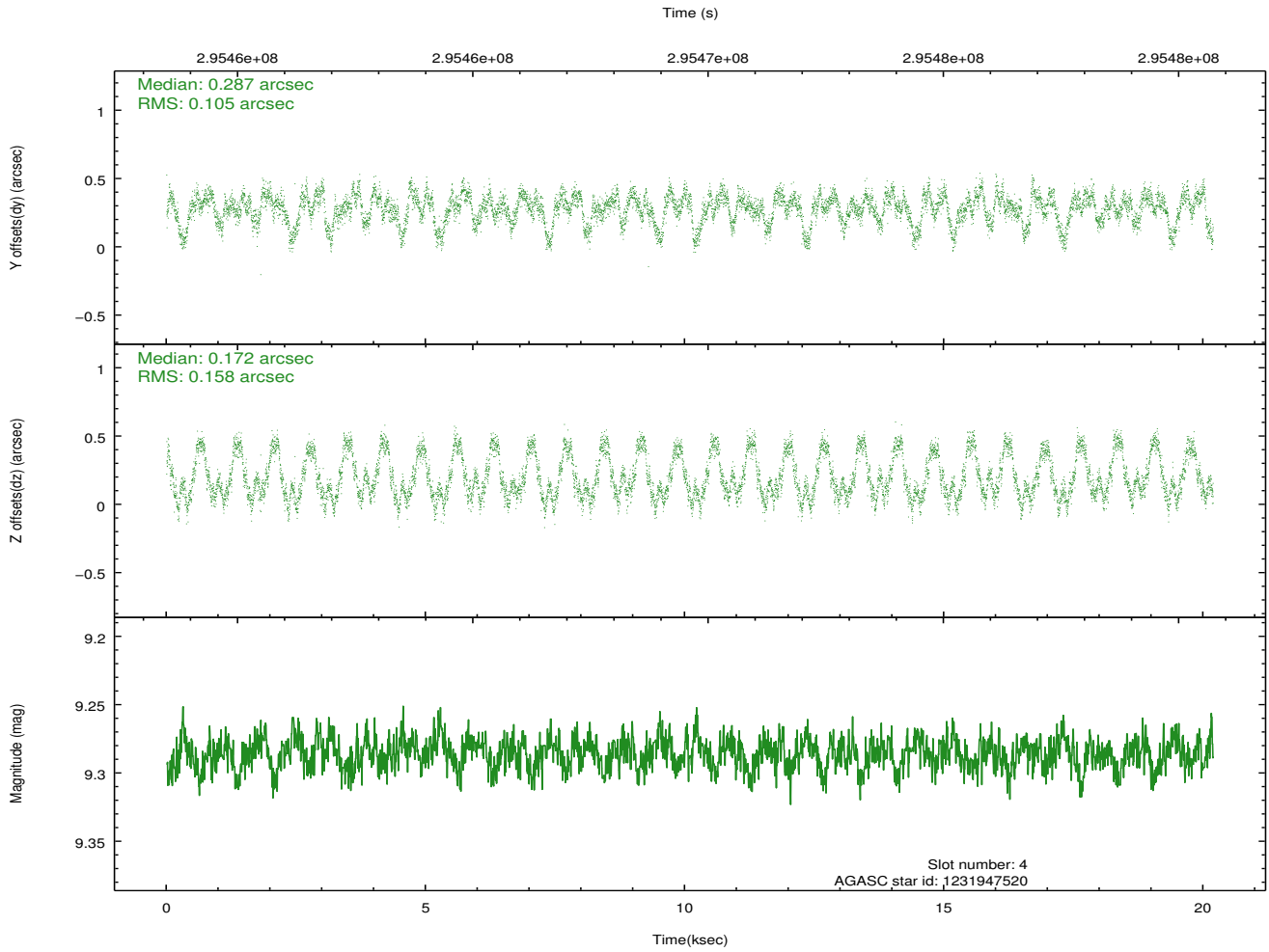
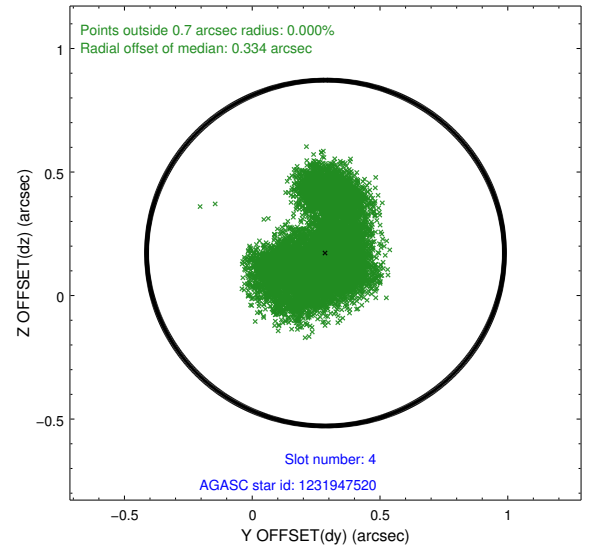
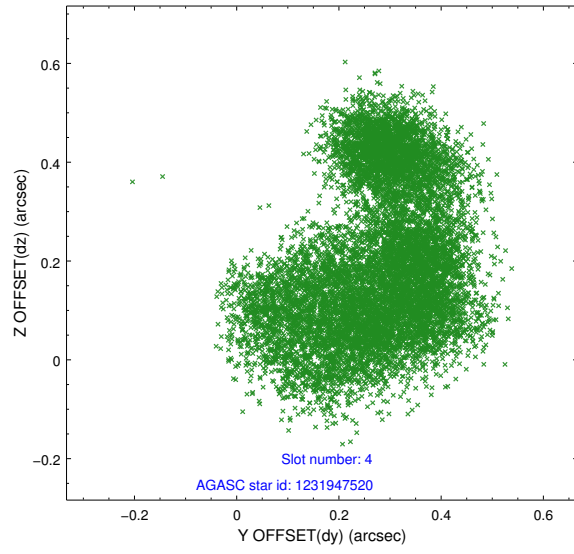
slot	status	id	mag	n_pts	med_dy	med_dz	dr1	dr2	ra	dec	mean_y	mean_z
0	FID	ACIS-S-2	7.09	4925	-0.037	-0.065	0.008	0.017	0.000000	0.000000	-765.17	-1735.12
1	FID	ACIS-S-4	7.19	4925	0.157	0.035	0.007	0.019	0.000000	0.000000	2148.21	173.28
2	FID	ACIS-S-5	7.23	4923	-0.151	0.038	0.008	0.014	0.000000	0.000000	-1817.90	167.15
3	GUIDE	1231556360	7.53	9847	-0.111	0.040	0.062	0.098	141.129879	-76.726017	-2043.83	647.78
4	GUIDE	1231947520	9.29	9842	0.287	0.172	0.218	0.304	139.157145	-77.163006	-361.89	-841.76
5	GUIDE	1232077648	9.10	9845	-0.125	-0.172	0.077	0.121	141.909923	-77.747090	1599.41	1438.94
6	GUIDE	1232081760	9.20	9827	0.043	0.063	0.084	0.135	141.677503	-77.241571	-210.87	1181.97
7	GUIDE	1232087288	9.21	9843	-0.078	-0.123	0.147	0.237	142.665214	-77.600966	1054.26	2001.65

2.4 Star Slots

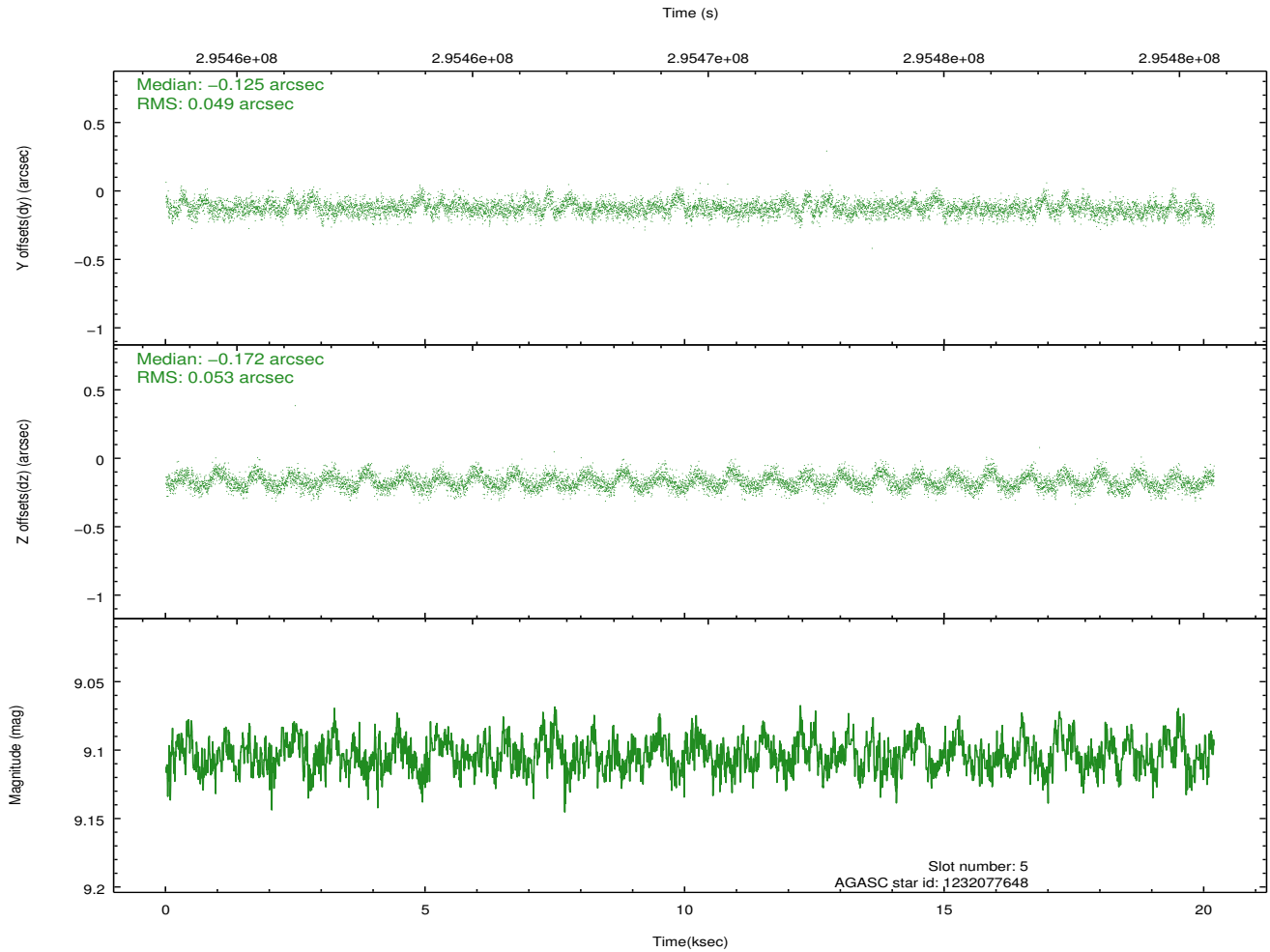
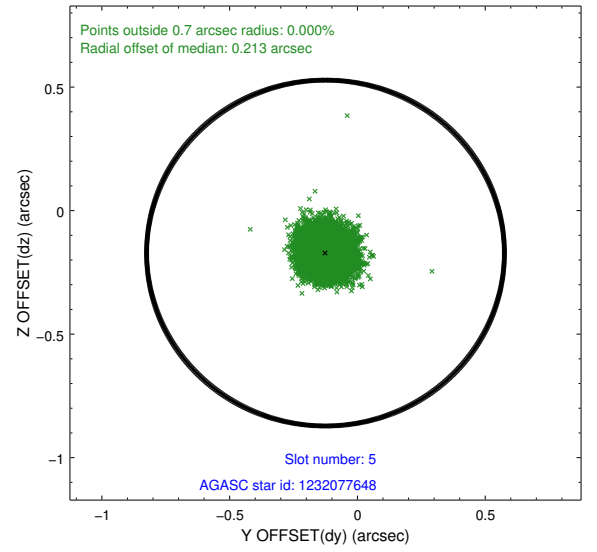
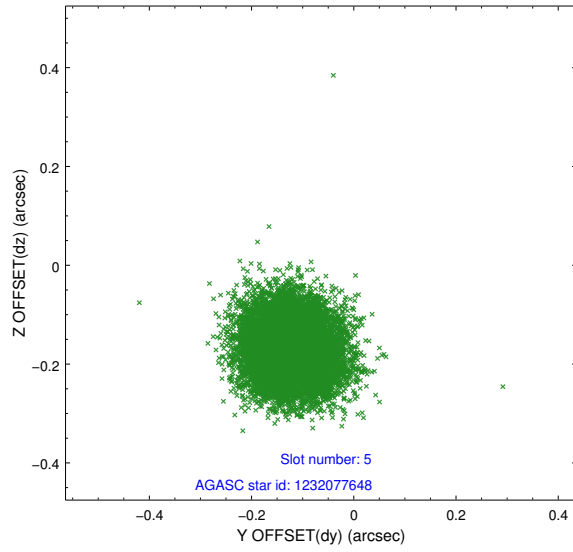
2.4.1 Slot 3



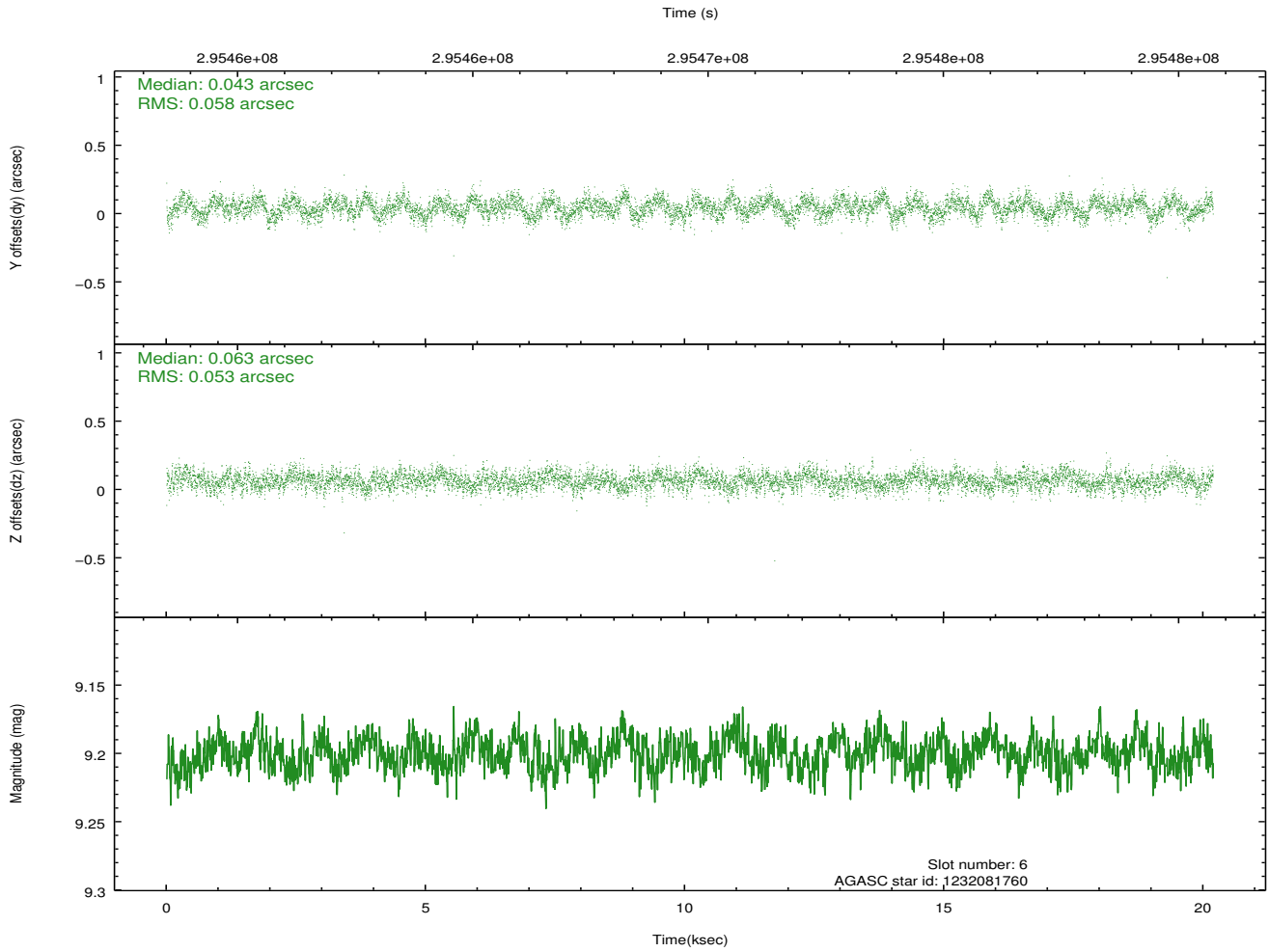
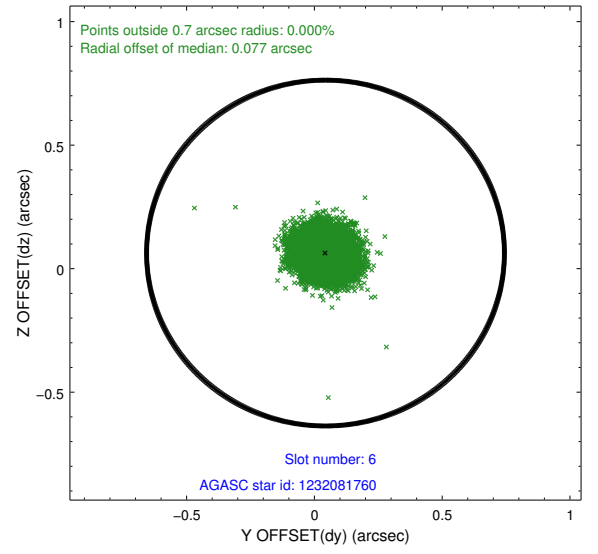
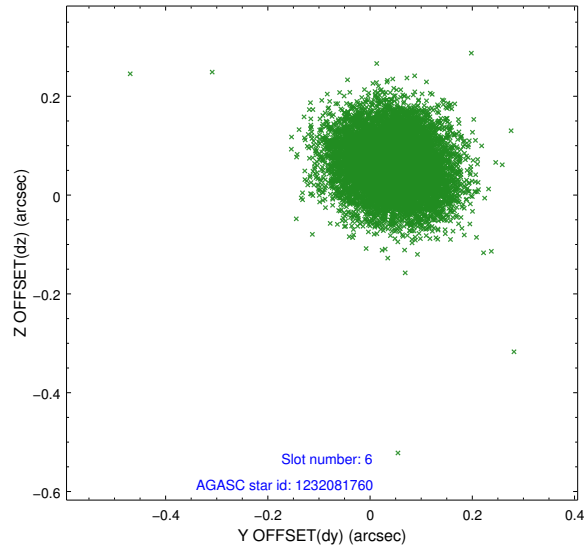
2.4.2 Slot 4



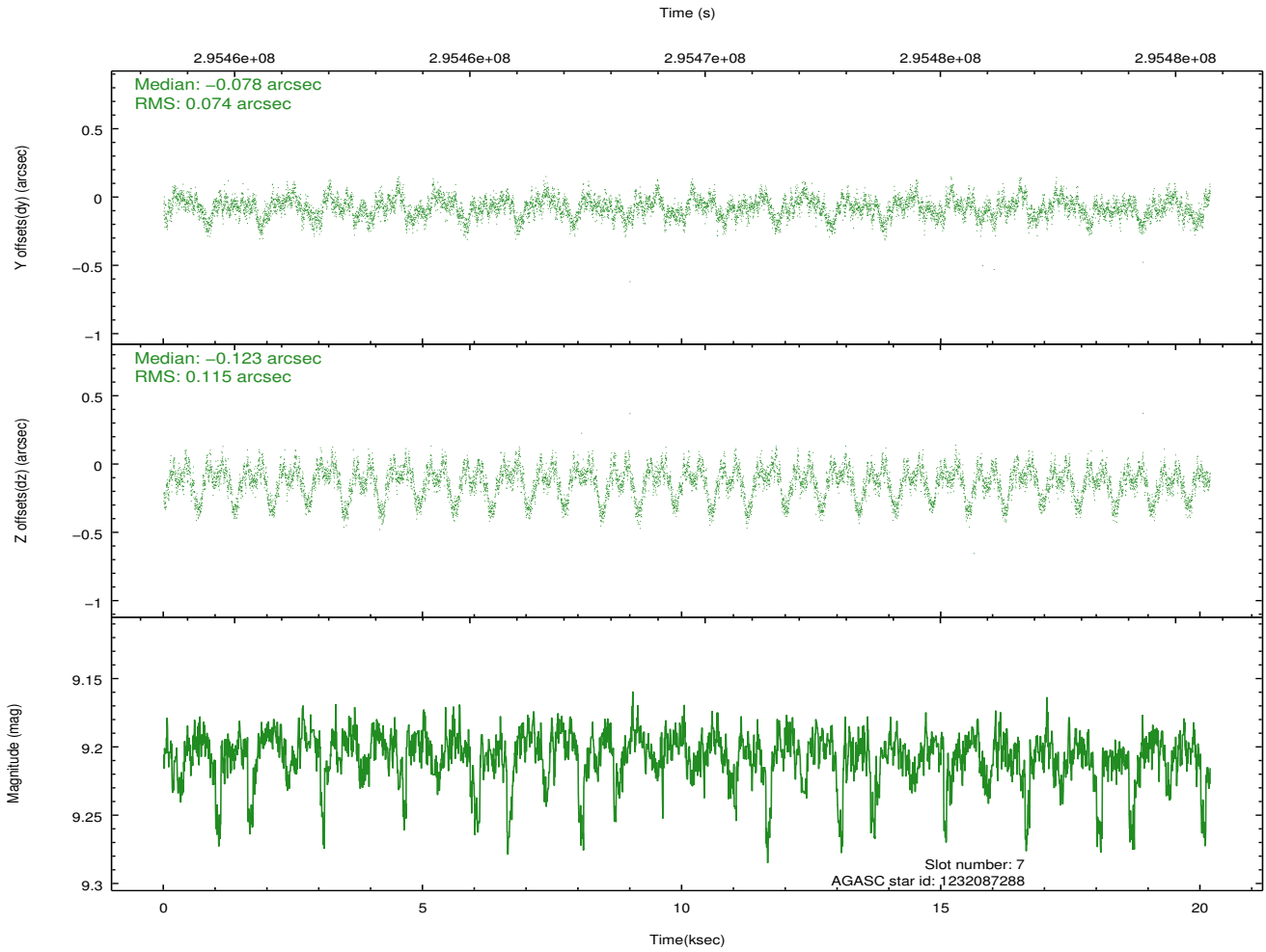
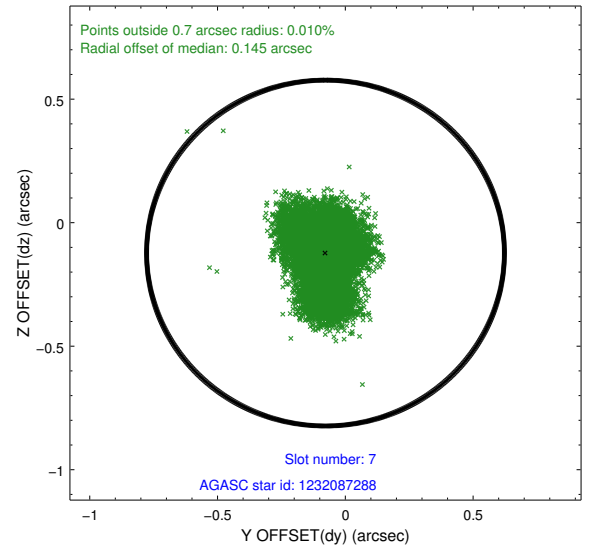
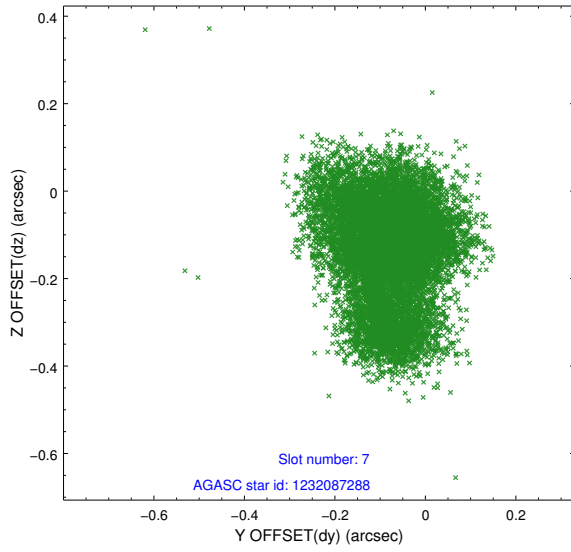
2.4.3 Slot 5



2.4.4 Slot 6

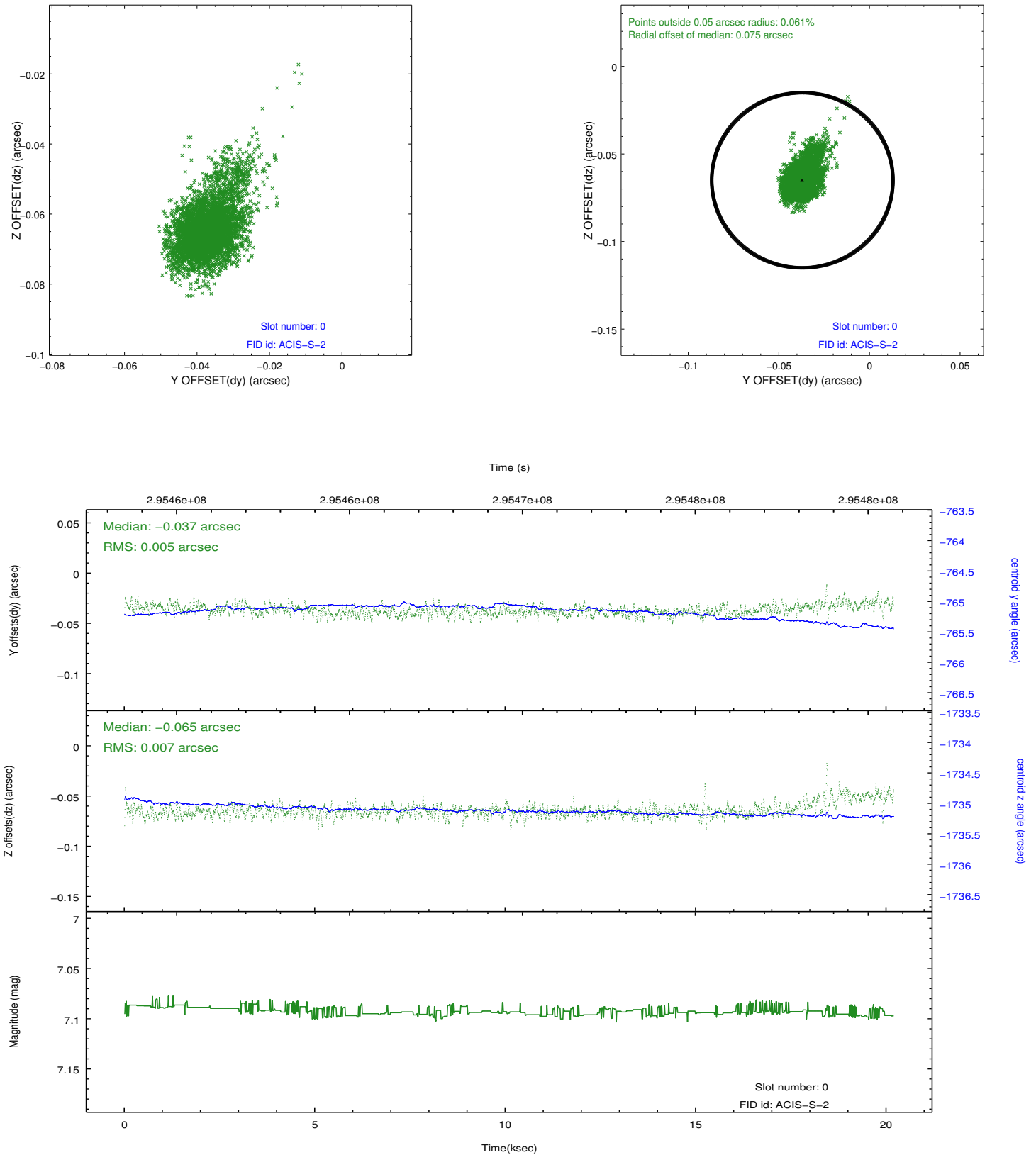


2.4.5 Slot 7

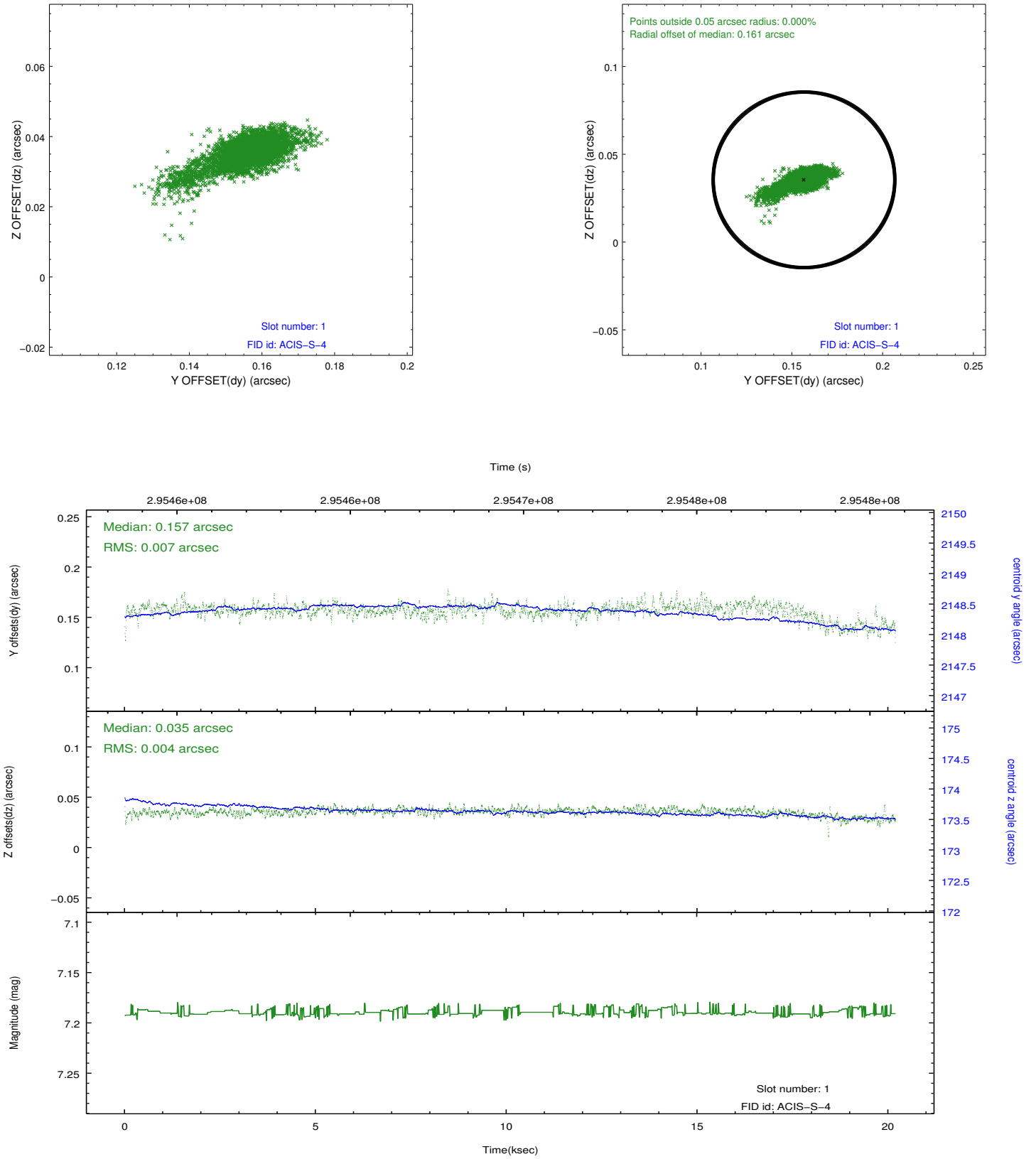


2.5 FID Slots

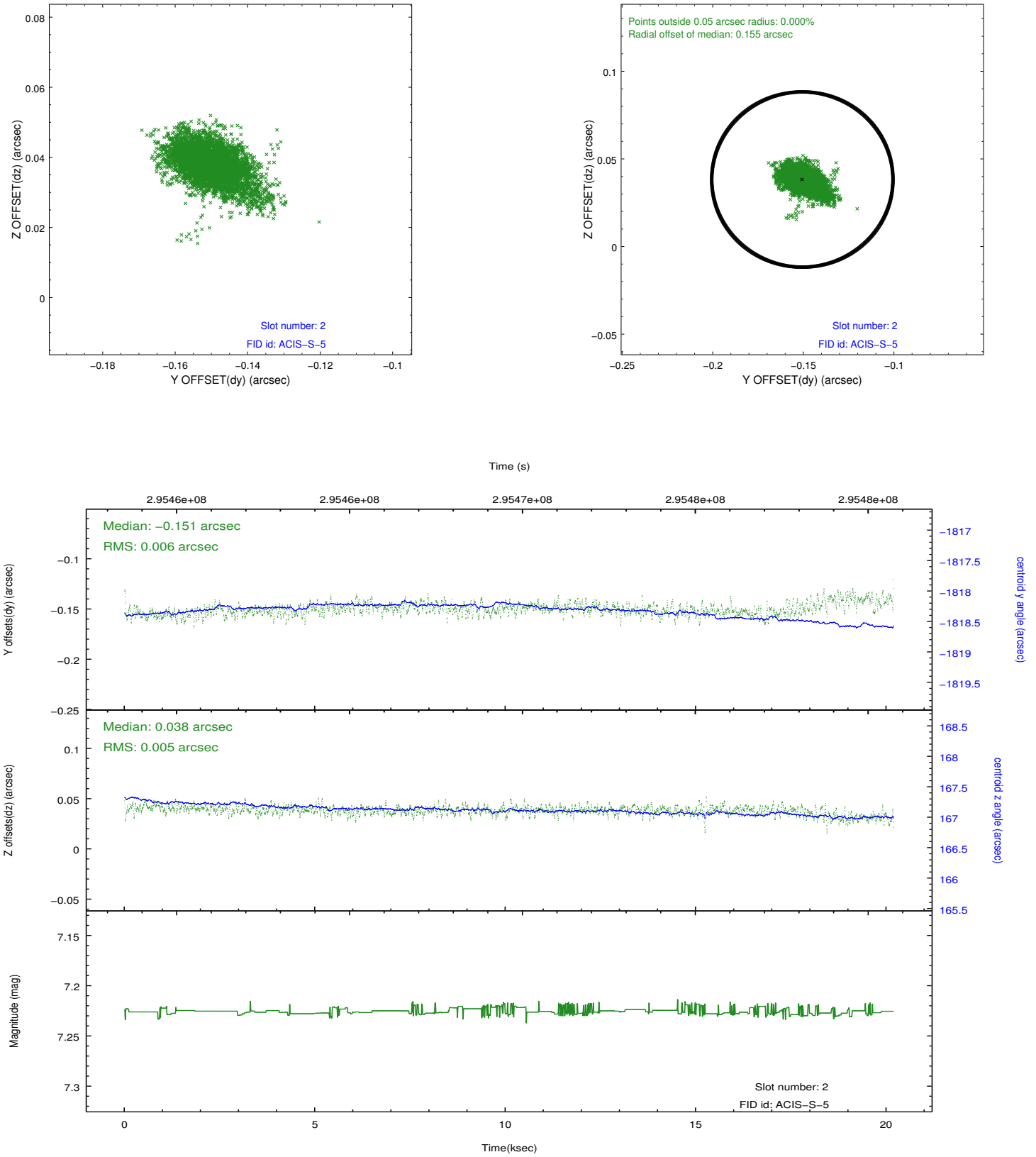
2.5.1 Slot 0



2.5.2 Slot 1



2.5.3 Slot 2



A Summary

A.1 Status

V&V Scientist	Jen Lauer
V&V Date (YYYY-MM-DD)	2012.04.25
V&V Edition	1
V&V Disposition and Status	OK
V&V Charge Time	20.1119999

A.2 Comments

Joint proposal with HST.