

V&V Reference Report

L2 ASCDS Version : 8.4.3.1

Observation 7285 - L2 Version 4
Chandra X-Ray Center

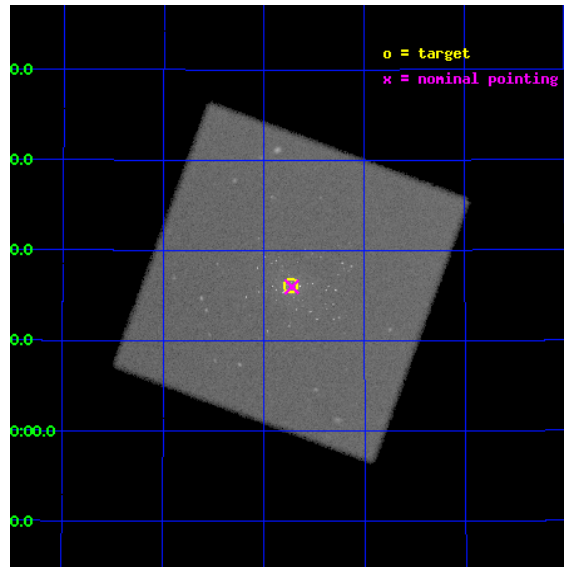
L2 Processing Date : Aug 11 2012

Contents

1	Front	2
2	OBI	3
2.1	OBI	3
2.1.1	Images	3
2.1.2	Parameters	4
2.1.3	Events	4
2.2	Compared Parameters	5
2.3	Aspect	6
2.4	Star Slots	9
2.4.1	Slot 3	9
2.4.2	Slot 4	10
2.4.3	Slot 5	11
2.4.4	Slot 6	12
2.4.5	Slot 7	13
2.5	FID Slots	14
2.5.1	Slot 0	14
2.5.2	Slot 1	15
2.5.3	Slot 2	16
A	Summary	17
A.1	Status	17
A.2	Comments	17

1 Front

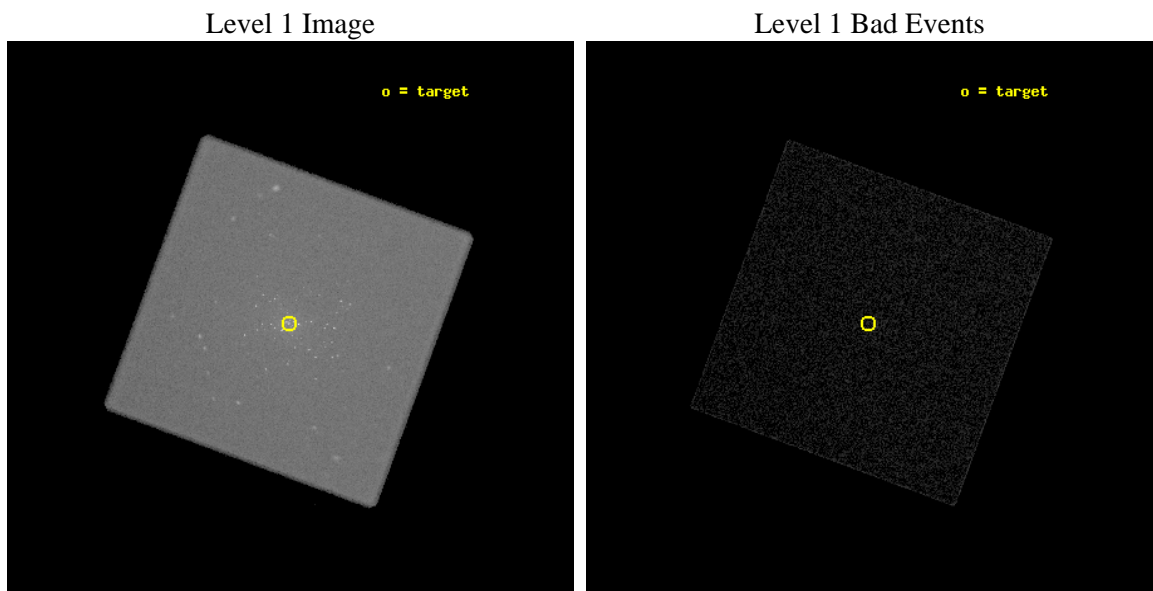
seq_num	300175	Sequence number
obs_id	7285	Observation id
title	Monitoring the supersoft source state of many optical novae in the core of M 31	Proposal title
observer	Dr. Wolfgang Pietsch	Principal investigator
object	M31	Source name
ra_targ	10.684583	Observer's specified target RA [deg]
dec_targ	41.269278	Observer's specified target Dec [deg]
ra_nom	10.680411385845	Nominal RA [deg]
dec_nom	41.266425941332	Nominal Dec [deg]
roll_nom	245.26344335878	Nominal Roll [deg]
revision	4	Processing version of data
ontime	18684.982132375	[s]
livetime	18516.521374151	Ontime multiplied by DTCOR
l2events	965175	Number of level 2 events



2 OBI

2.1 OBI

2.1.1 Images



2.1.2 Parameters

obi_num	0	Obi number	sched_exp_time	18500.000000	[s] Scheduled observation exposure time
ascdsver	8.4.5	Processing system revision	ontime	18684.982132375	[s]
caldsver	4.5.1.1	 	l1events	1566464	Number of level 1 events
date	2012-08-11T14:56:57	Date and time of file creation			
revision	4	Processing version of data			

2.1.3 Events

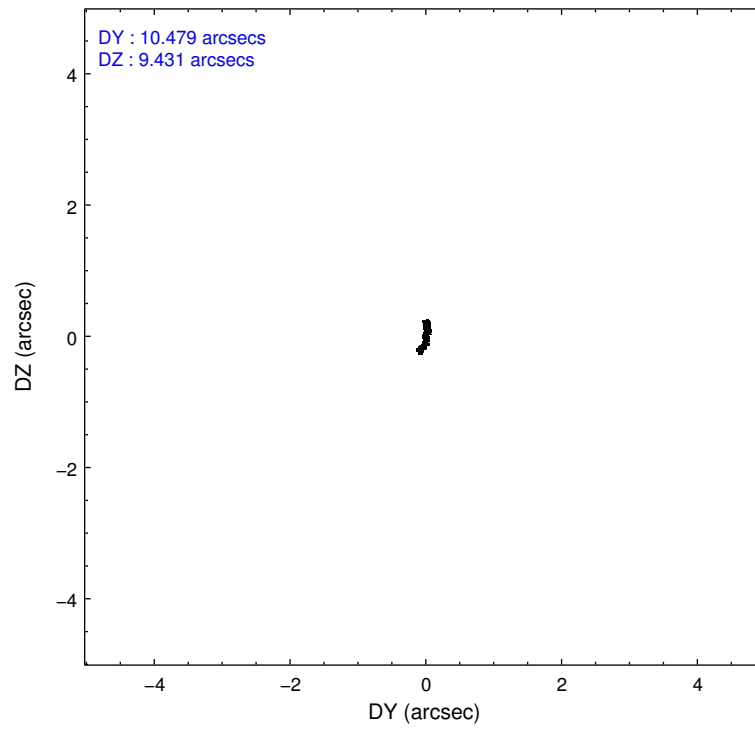
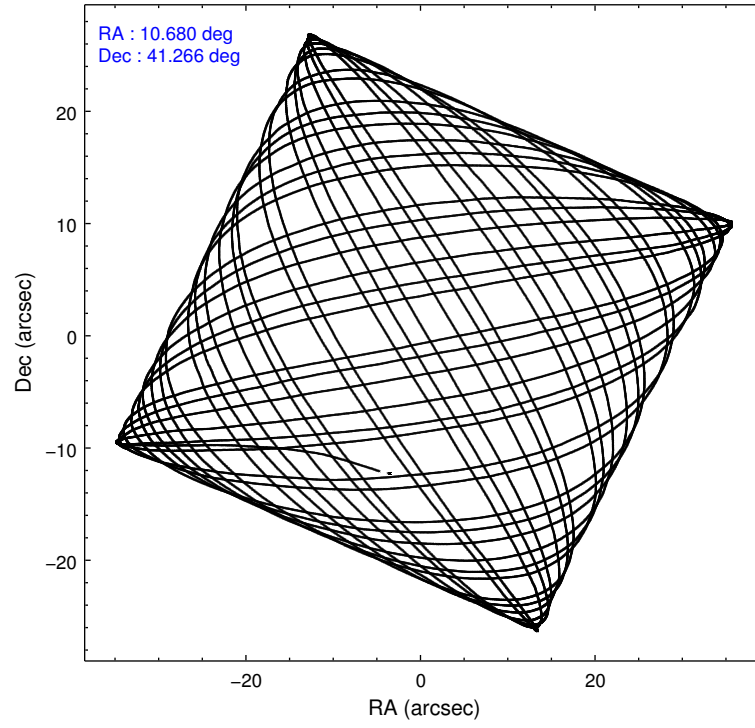
Level 1 Events

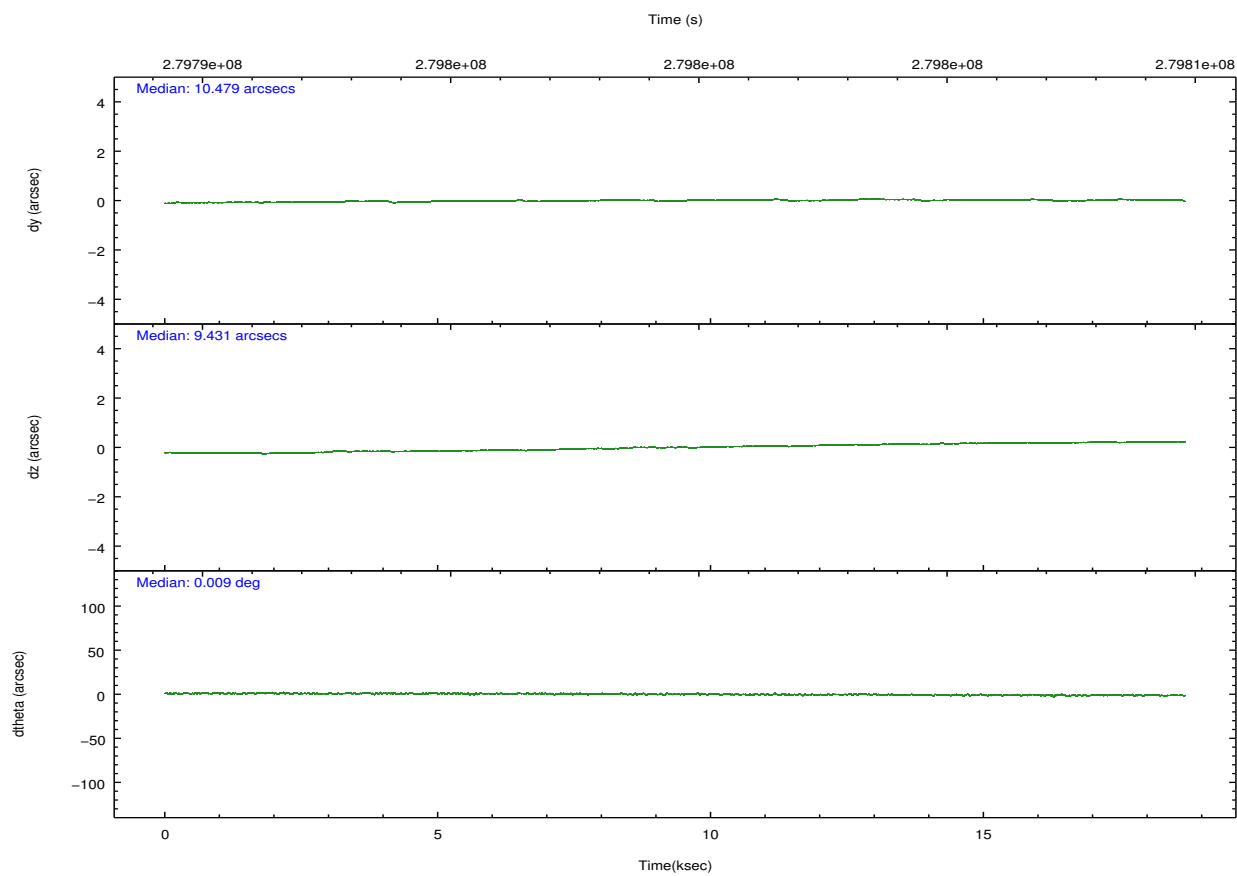
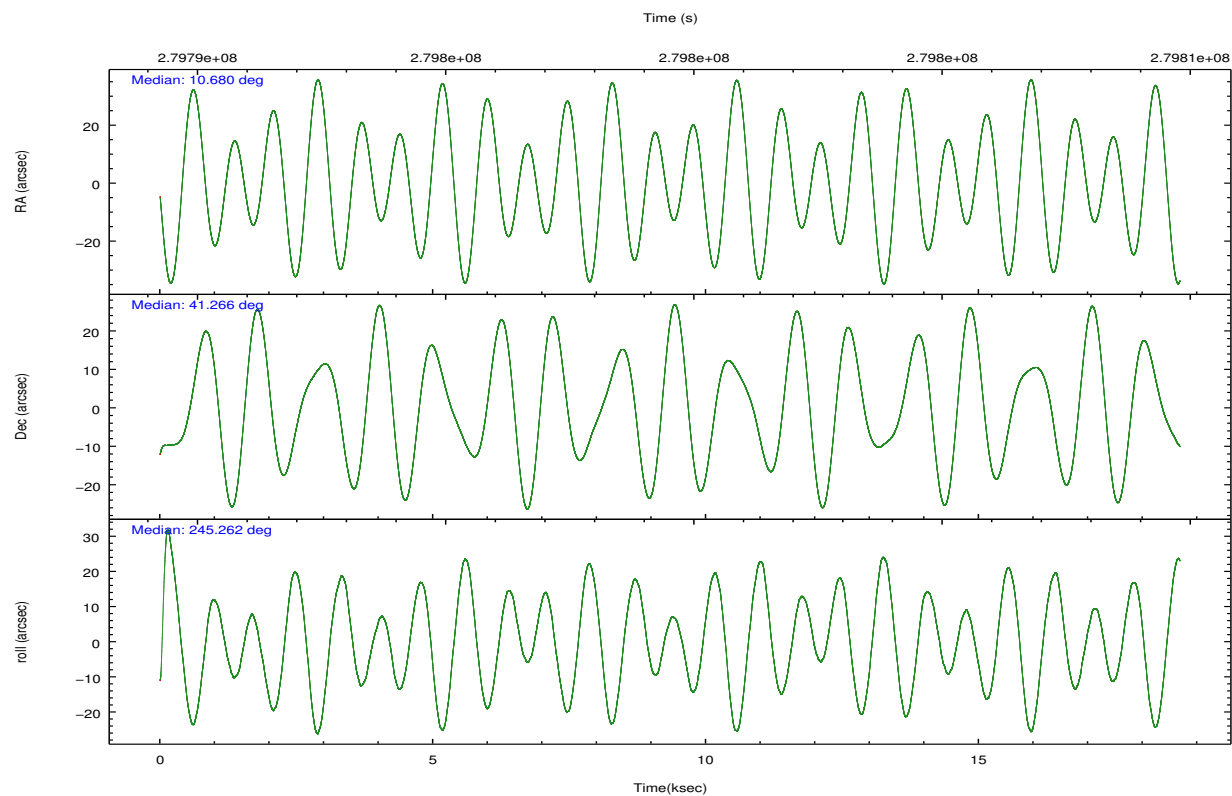
	segment 0
level 1 events	1566464
rejected events	149872
rejected %	9%

2.2 Compared Parameters

Parameter	Planned	Actual	Parameter	Planned	Actual
Instrument	HRC	HRC	Obspar format version number	7	7
Detector	HRC-I	HRC-I	Obspar file type	PREDICTED	ACTUAL
Grating	NONE	NONE	Obspar update status	NONE	UPDATED
Data mode	OBSERVING	OBSERVING			
Observation mode	POINTING	POINTING			
[deg] Pointing RA	10.676361	10.68041138584526			
[deg] Pointing Dec	41.293391	41.26642594133184			
[deg] Pointing Roll	245.361621	245.2634433587812			
[s] Window start time (MET)	279763265.184000	279763265.184000			
[s] Window stop time (MET)	280281605.184000	280281605.184000			
[mm] SIM focus pos	-1.040293	-1.038866356238299			
[mm] SIM defocus	0	0.001426264420575141			
[mm] SIM translation stage pos	126.985494	126.9829799899862			
[mm] SIM translation stage offset	0	0.002508901615314585			
[s] Observation start time (MET)	279790369.184000	279789440.18115			
Observation start date	2006-11-13T07:31:44	2006-11-13T07:17:20			
[s] Observation end time (MET)	279808869.184000	279810161.06963			
Observation end date	2006-11-13T12:40:04	2006-11-13T13:02:41			

2.3 Aspect



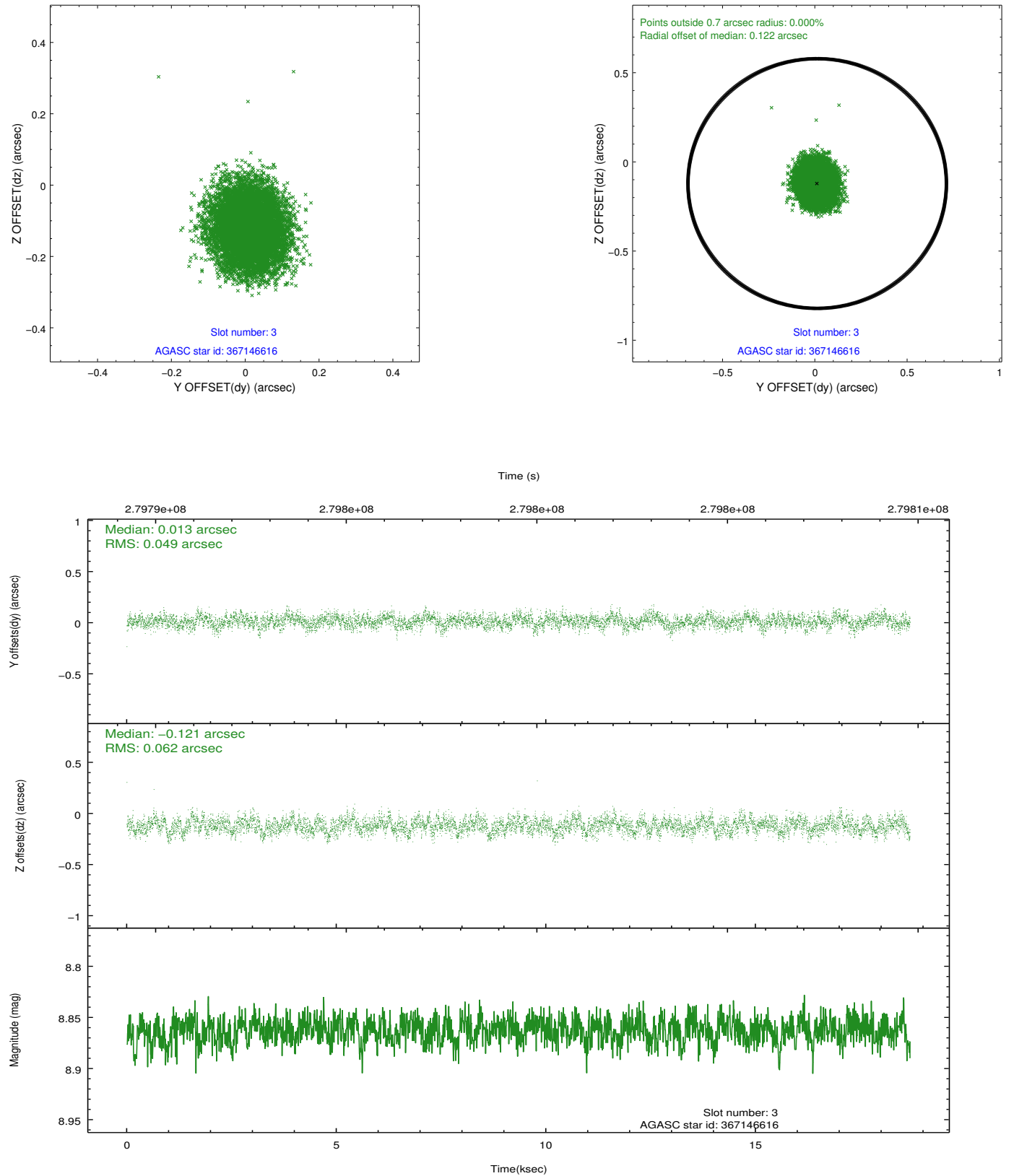


Slot Statistics

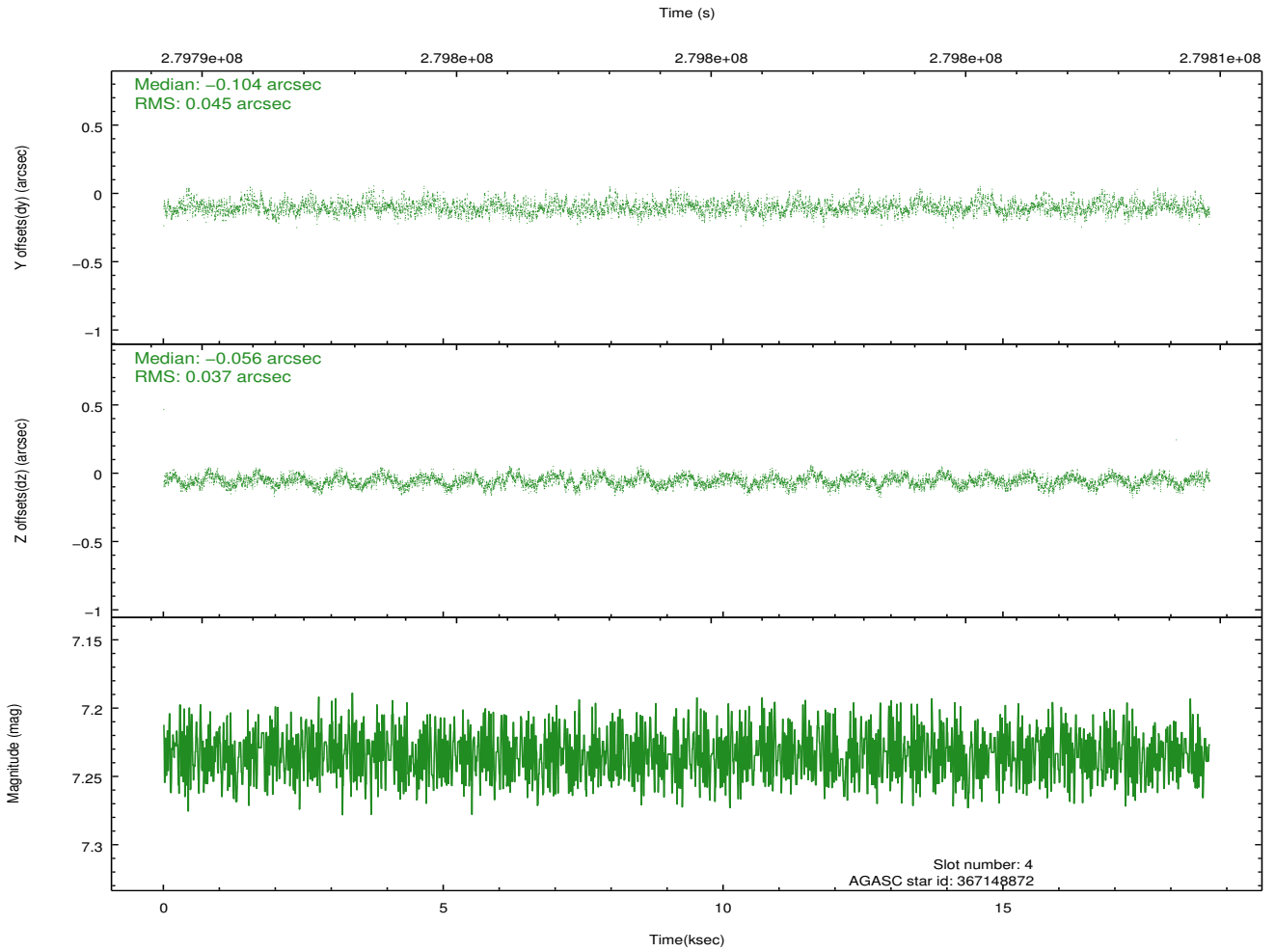
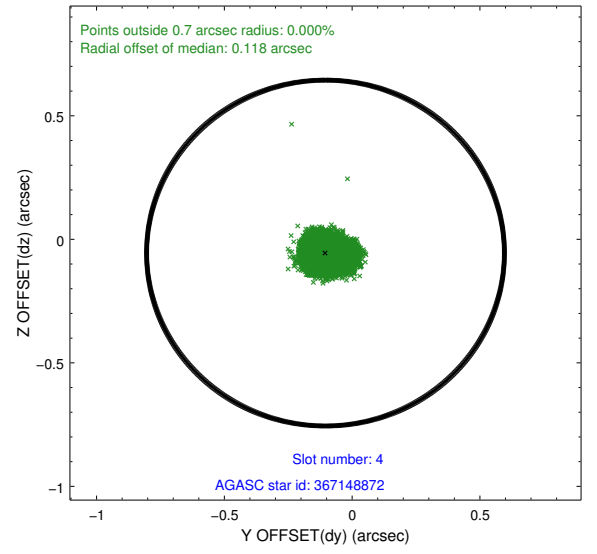
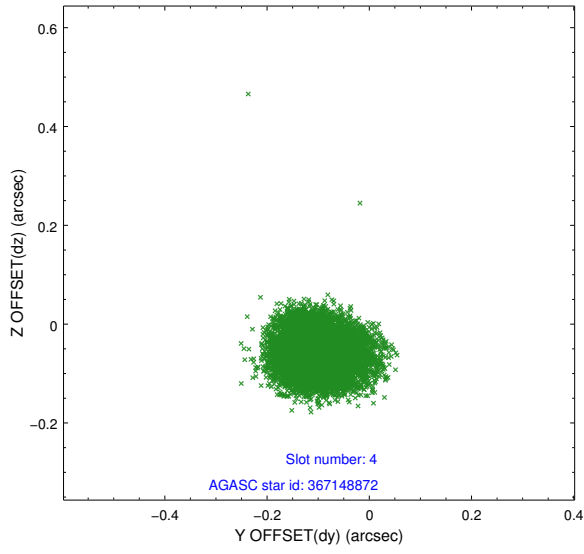
slot	status	id	mag	n_pts	med_dy	med_dz	dr1	dr2	ra	dec	mean_y	mean_z
0	FID	HRC-I-1	6.97	4558	-0.015	0.039	0.010	0.017	0.000000	0.000000	-766.17	-1297.30
1	FID	HRC-I-2	7.01	4557	0.112	-0.065	0.010	0.016	0.000000	0.000000	846.42	-1299.26
2	FID	HRC-I-3	7.07	4558	0.022	-0.063	0.008	0.013	0.000000	0.000000	-1194.43	1006.87
3	GUIDE	367146616	8.86	9112	0.013	-0.121	0.085	0.136	11.418645	41.190163	-508.50	1979.26
4	GUIDE	367148872	7.23	9116	-0.104	-0.056	0.062	0.099	10.505940	40.688258	2173.83	485.68
5	GUIDE	367663272	9.30	9089	-0.023	0.117	0.099	0.166	10.656279	41.699429	-1305.56	-658.51
6	GUIDE	367139648	8.20	9114	0.109	0.137	0.060	0.102	11.021290	40.433909	2416.64	2148.96
7	GUIDE	367674552	8.84	9109	0.003	-0.078	0.085	0.136	11.016238	41.570845	-1290.96	415.35

2.4 Star Slots

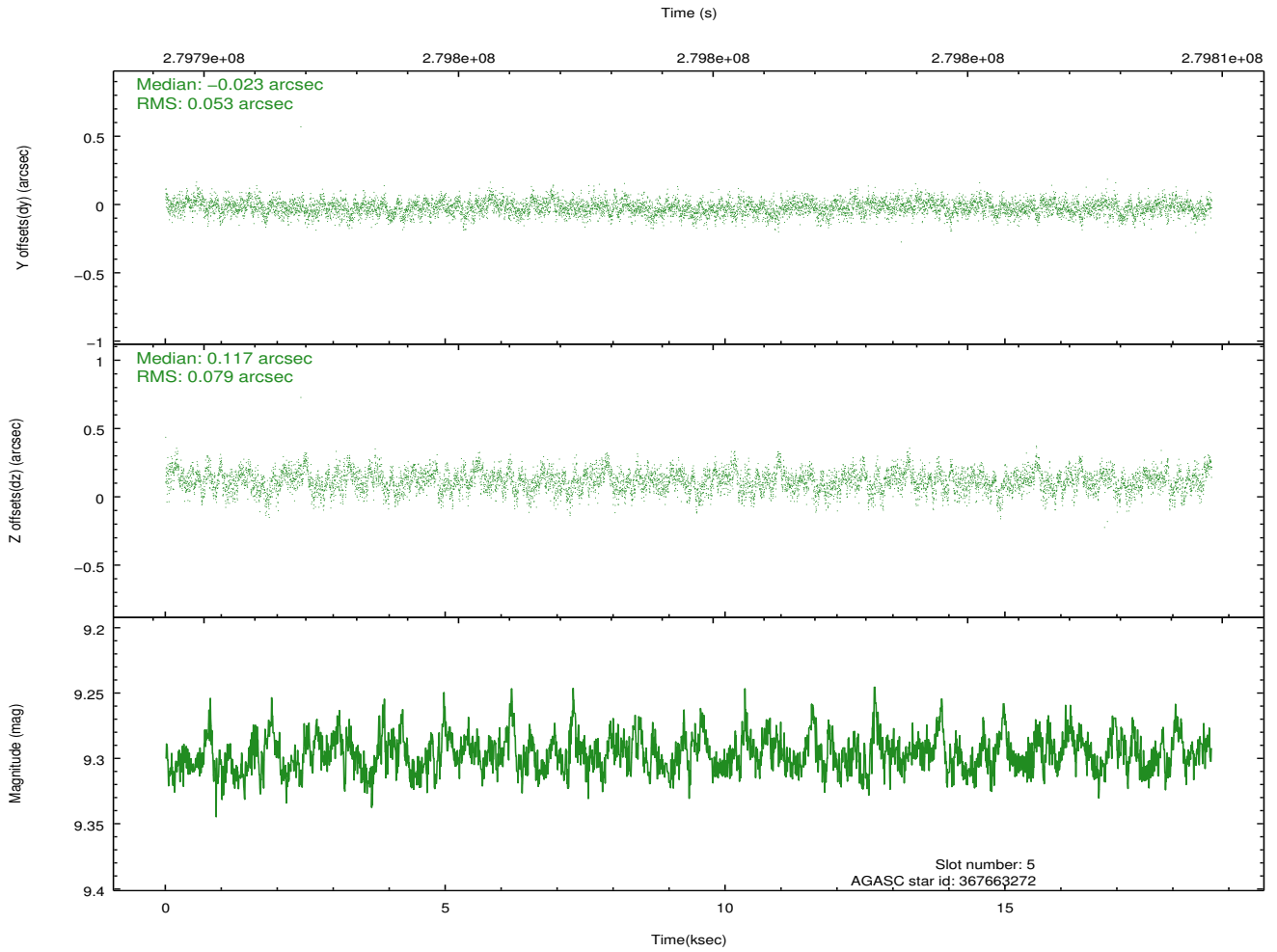
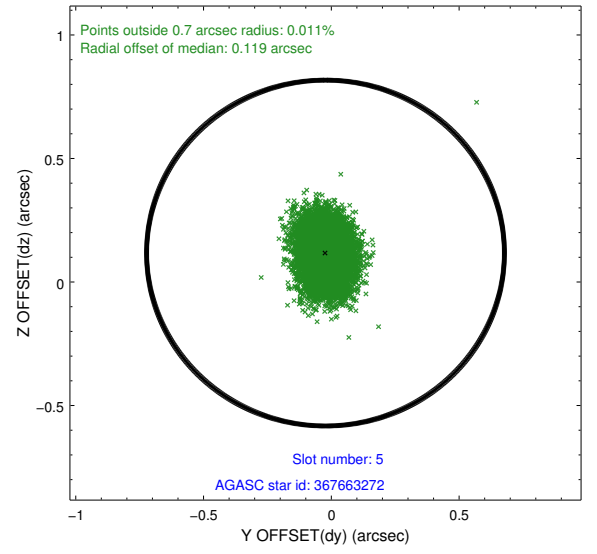
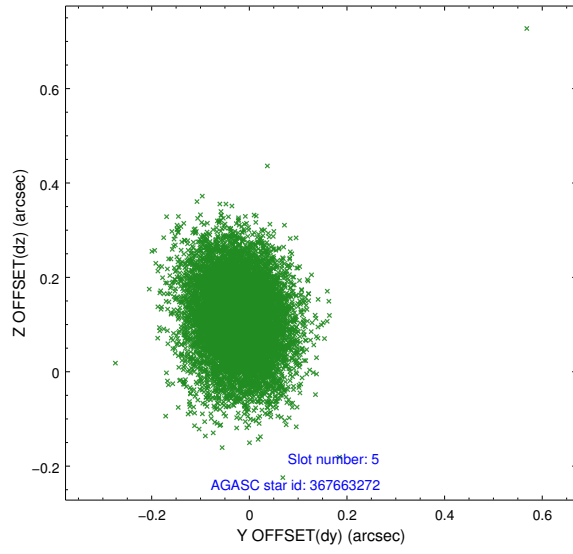
2.4.1 Slot 3



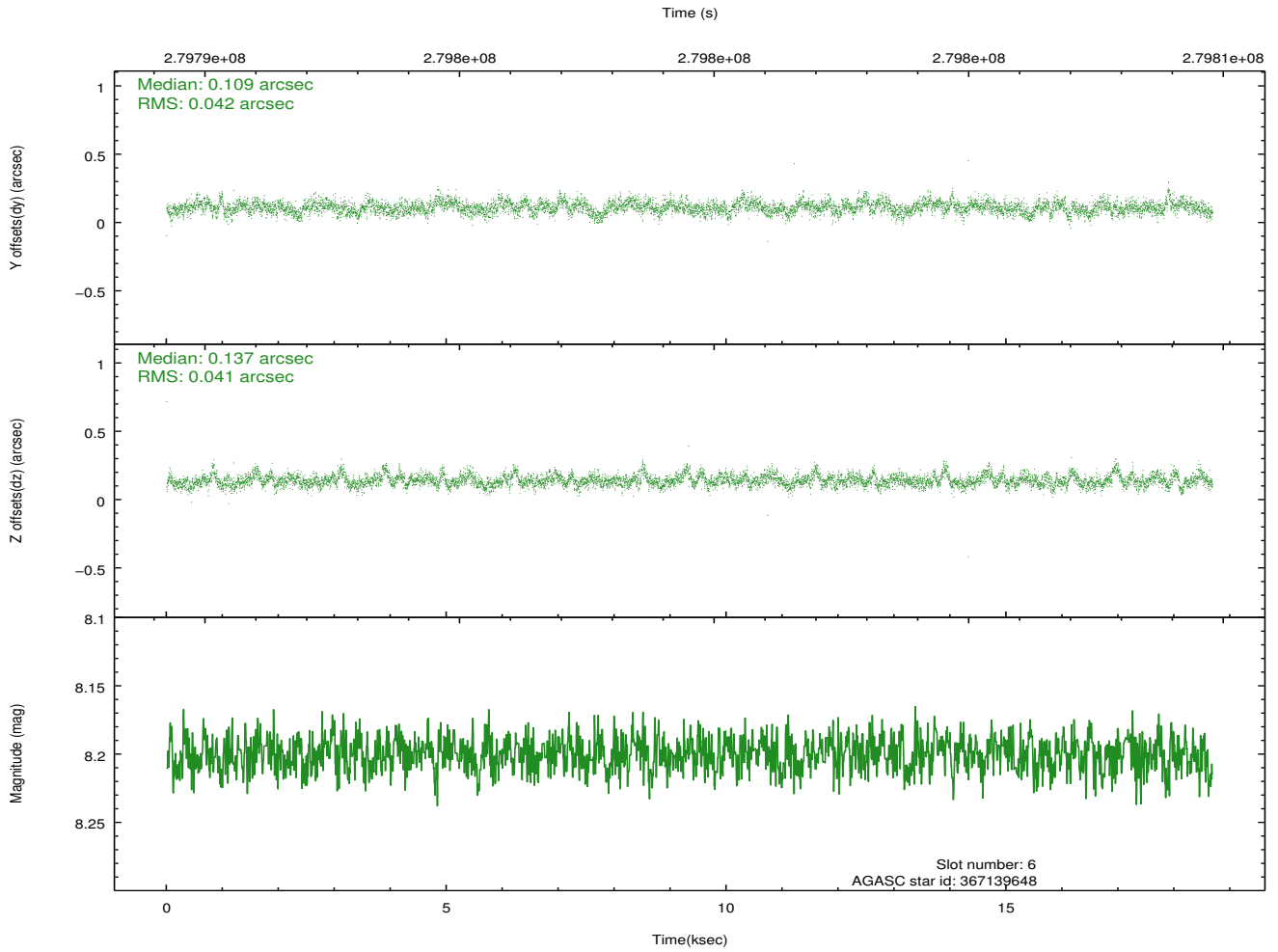
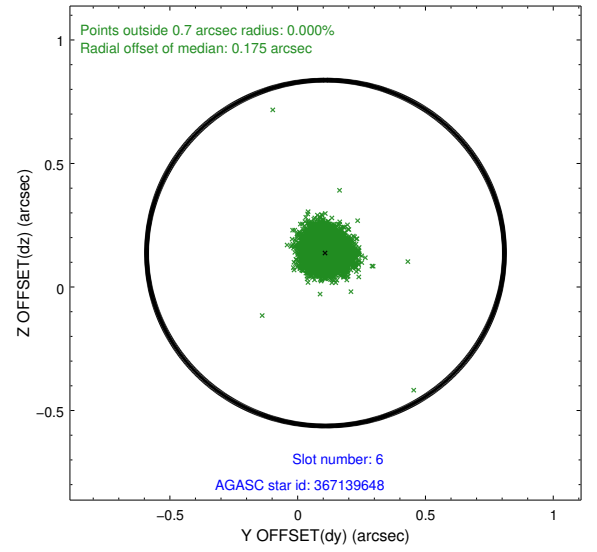
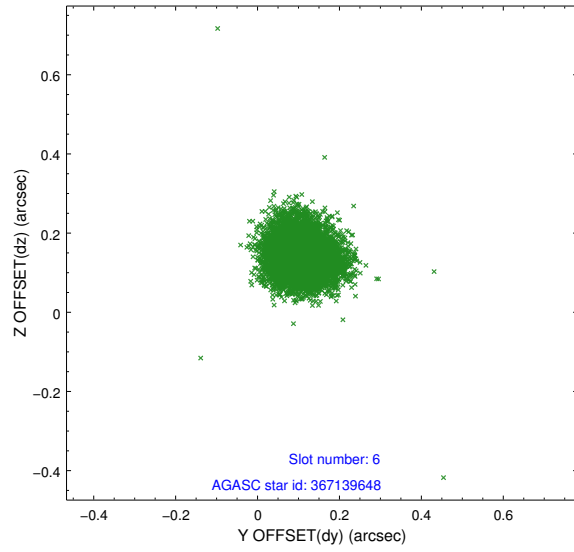
2.4.2 Slot 4



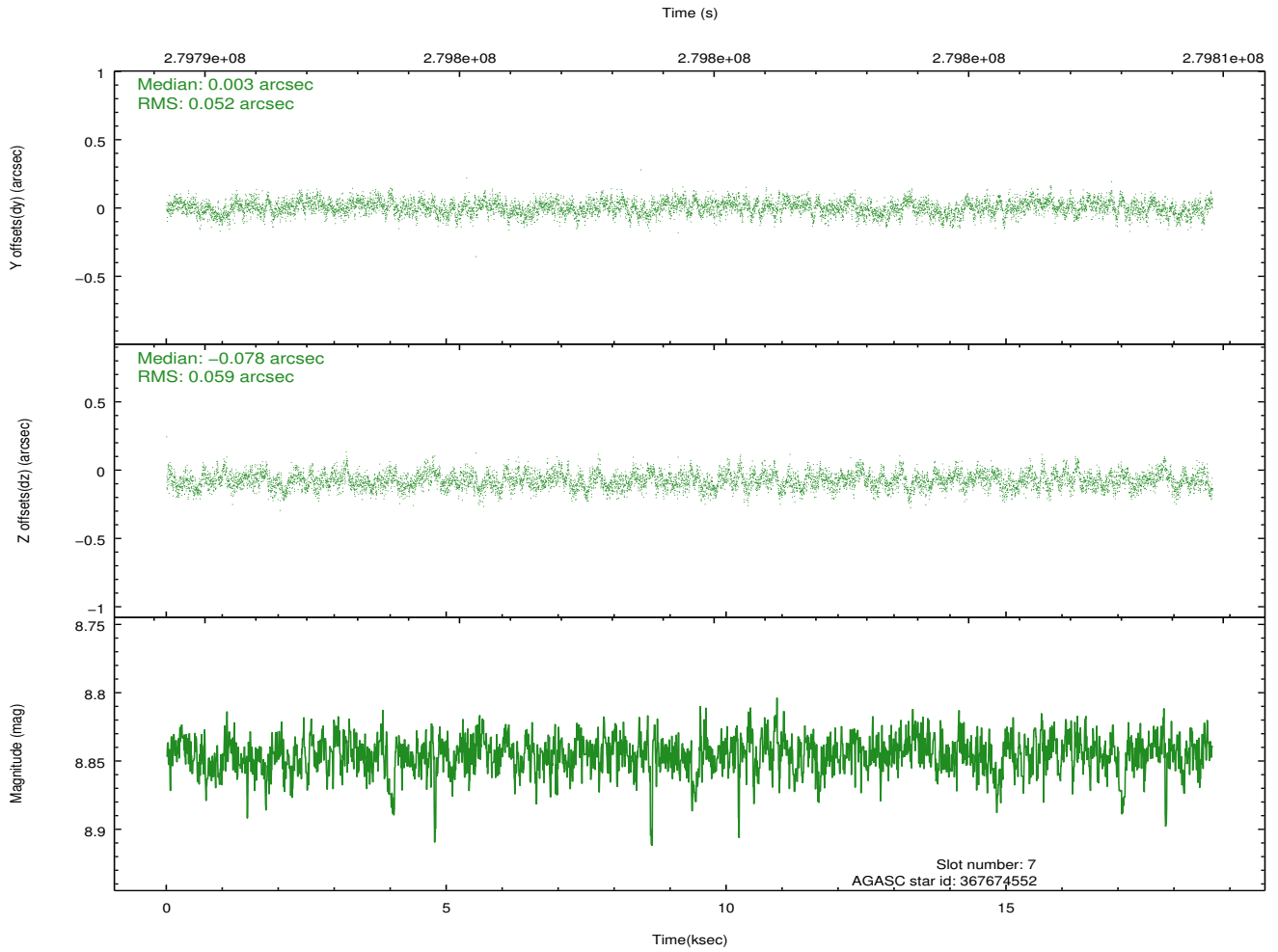
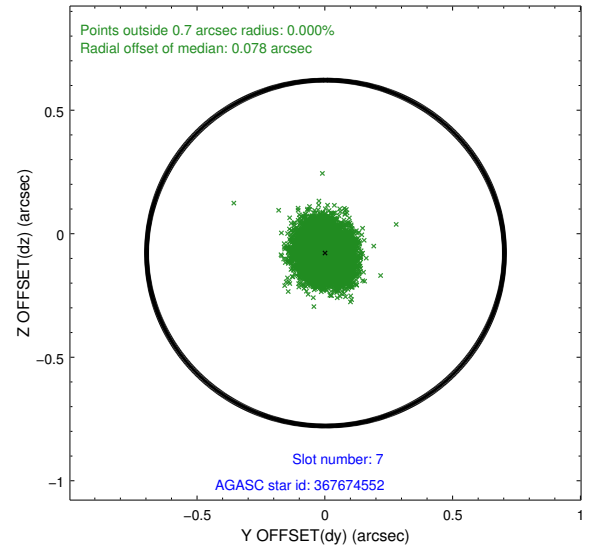
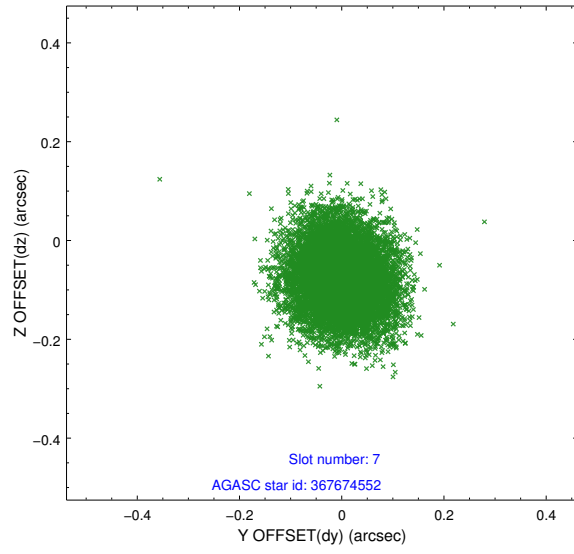
2.4.3 Slot 5



2.4.4 Slot 6

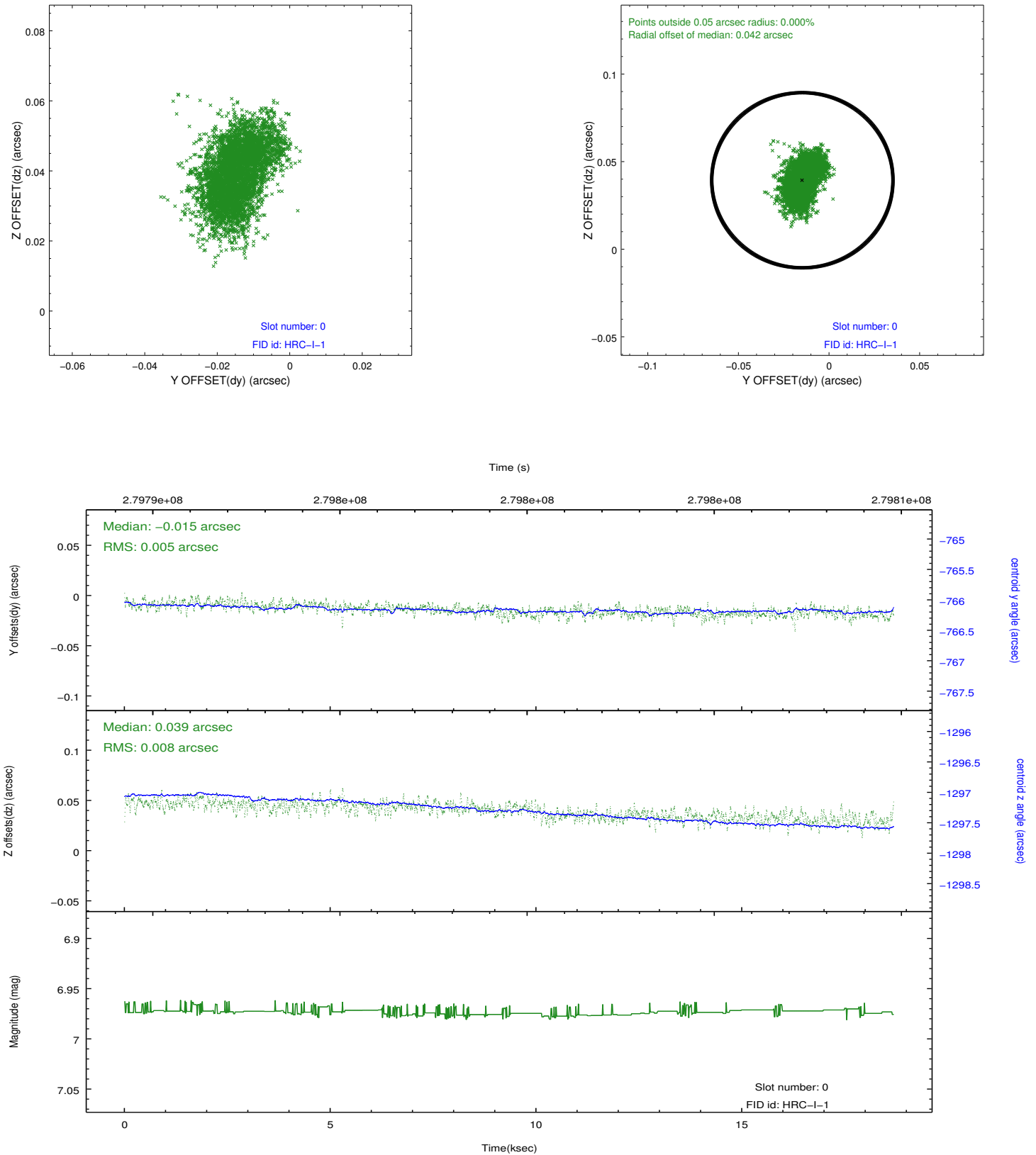


2.4.5 Slot 7

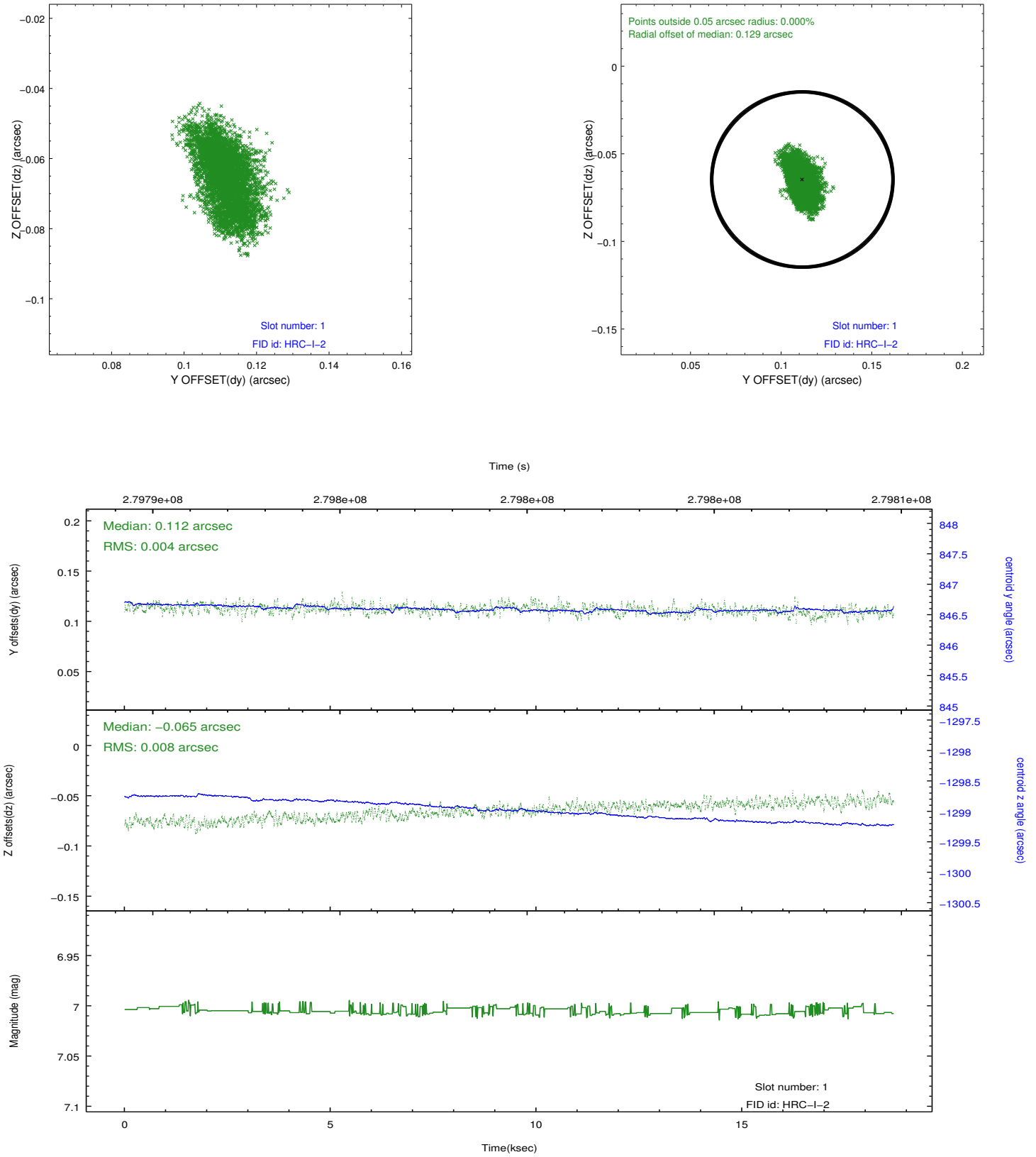


2.5 FID Slots

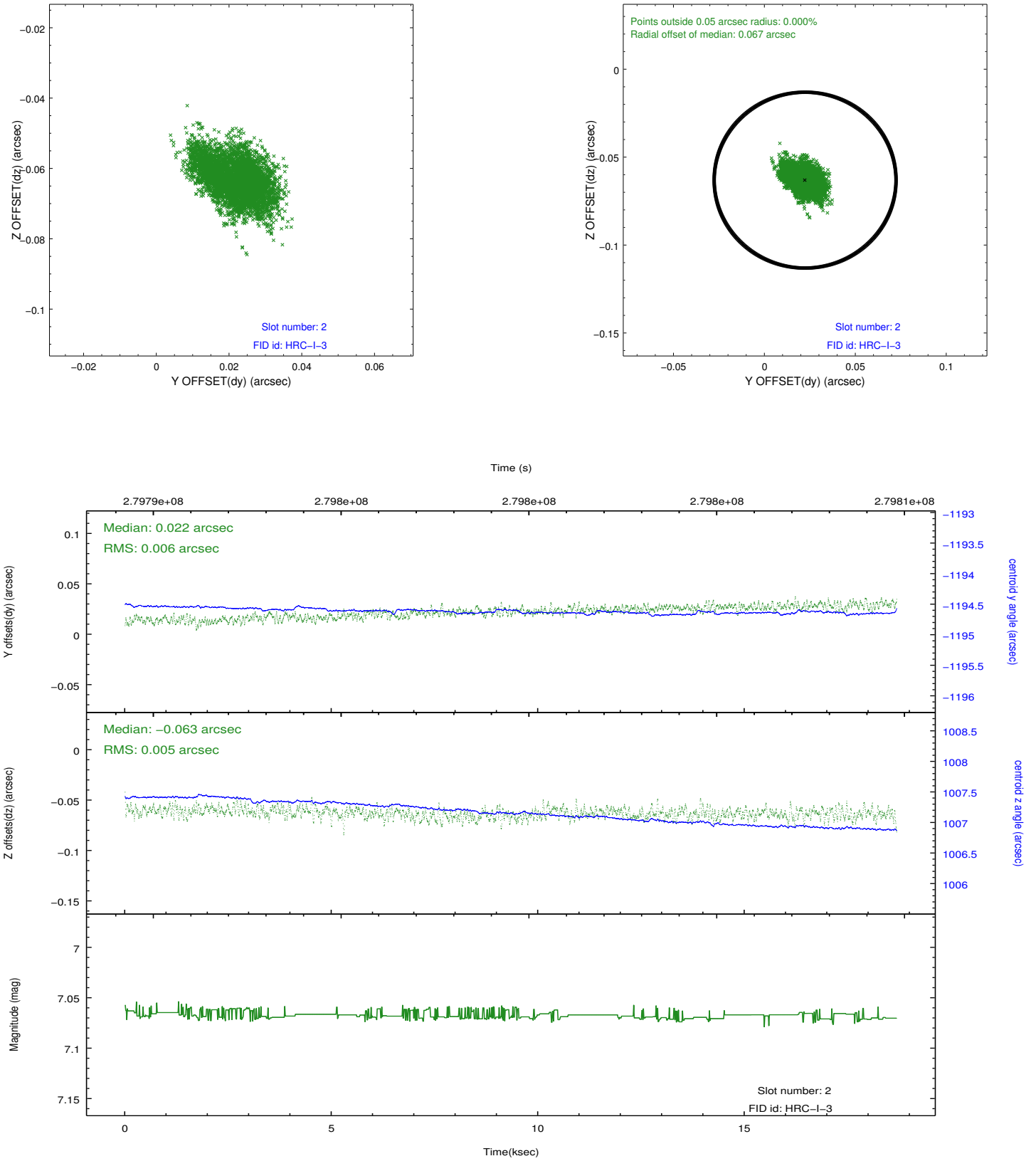
2.5.1 Slot 0



2.5.2 Slot 1



2.5.3 Slot 2



A Summary

A.1 Status

V&V Scientist	Jen Lauer
V&V Date (YYYY-MM-DD)	2012.08.14
V&V Edition	1
V&V Disposition and Status	OK
V&V Charge Time	18.6849821

A.2 Comments

Joint proposal with XMM. Window preference met.