

V&V Reference Report

L2 ASCDS Version : 8.4.3.1

Observation 7384 - L2 Version 2
Chandra X-Ray Center

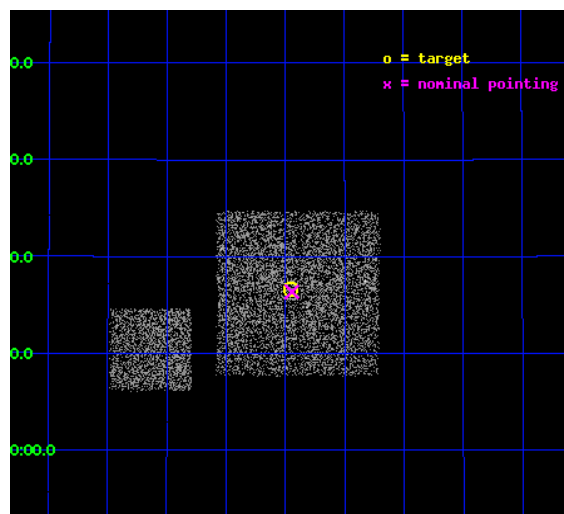
L2 Processing Date : Apr 7 2012

Contents

1	Front	2
2	OBI	3
2.1	OBI	3
2.1.1	Images	3
2.1.2	Bias	3
2.1.3	Parameters	4
2.1.4	Events	4
2.2	Compared Parameters	5
2.3	Aspect	6
2.4	Star Slots	9
2.4.1	Slot 3	9
2.4.2	Slot 4	10
2.4.3	Slot 5	11
2.4.4	Slot 6	12
2.4.5	Slot 7	13
2.5	FID Slots	14
2.5.1	Slot 0	14
2.5.2	Slot 1	15
2.5.3	Slot 2	16
A	Summary	17
A.1	Status	17
A.2	Comments	17

1 Front

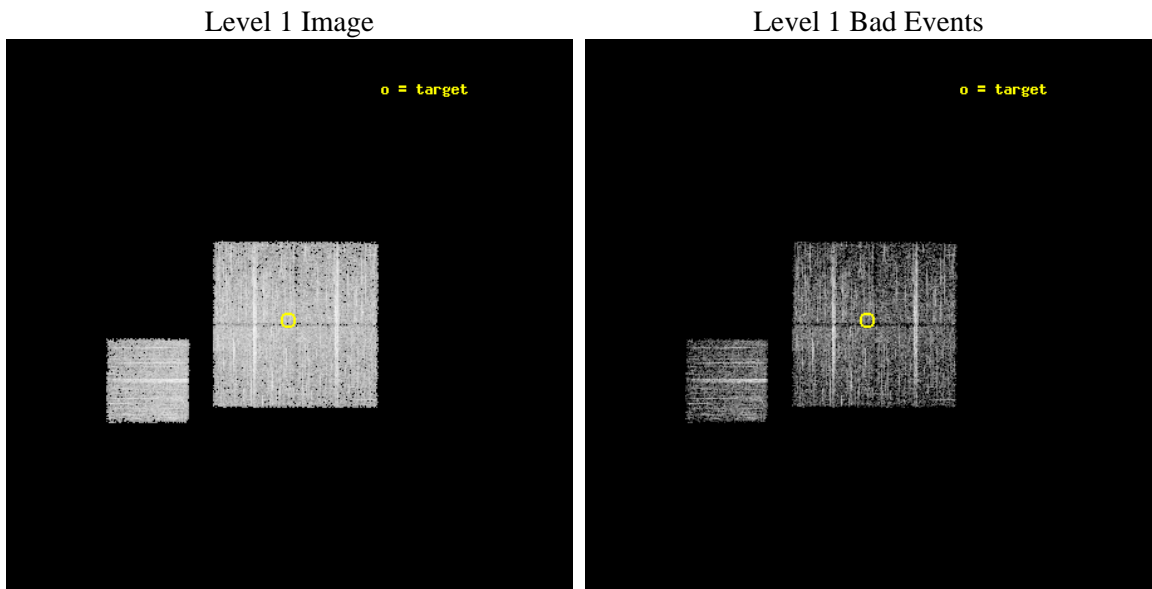
seq_num	900481	Sequence number
obs_id	7384	Observation id
title	Chandra Large Scale Survey of the NOAO Bootes Deep Field (A)	Propo
observer	Dr Stephen Murray	Principal investigator
object	Bootes2 27	Source name
dtcycle	0	
cycle	P	events from which exps? Prim/Second/Both
ra_targ	218.2386	Observer's specified target RA [deg]
dec_targ	34.2773	Observer's specified target Dec [deg]
ra_nom	218.23641872275	Nominal RA [deg]
dec_nom	34.272961317347	Nominal Dec [deg]
roll_nom	270.21001531808	Nominal Roll [deg]
revision	2	Processing version of data
ontime	4472.9829208255	Sum of GTIs [s]
livetime	4414.5401060028	Livetime [s]
ontime0	4476.0007910132	Sum of GTIs [s]
ontime1	4476.0418310165	Sum of GTIs [s]
ontime2	4472.9419106841	Sum of GTIs [s]
ontime3	4472.9829208255	Sum of GTIs [s]
ontime6	4475.959731102	Sum of GTIs [s]
l2events	12077	Number of level 2 events



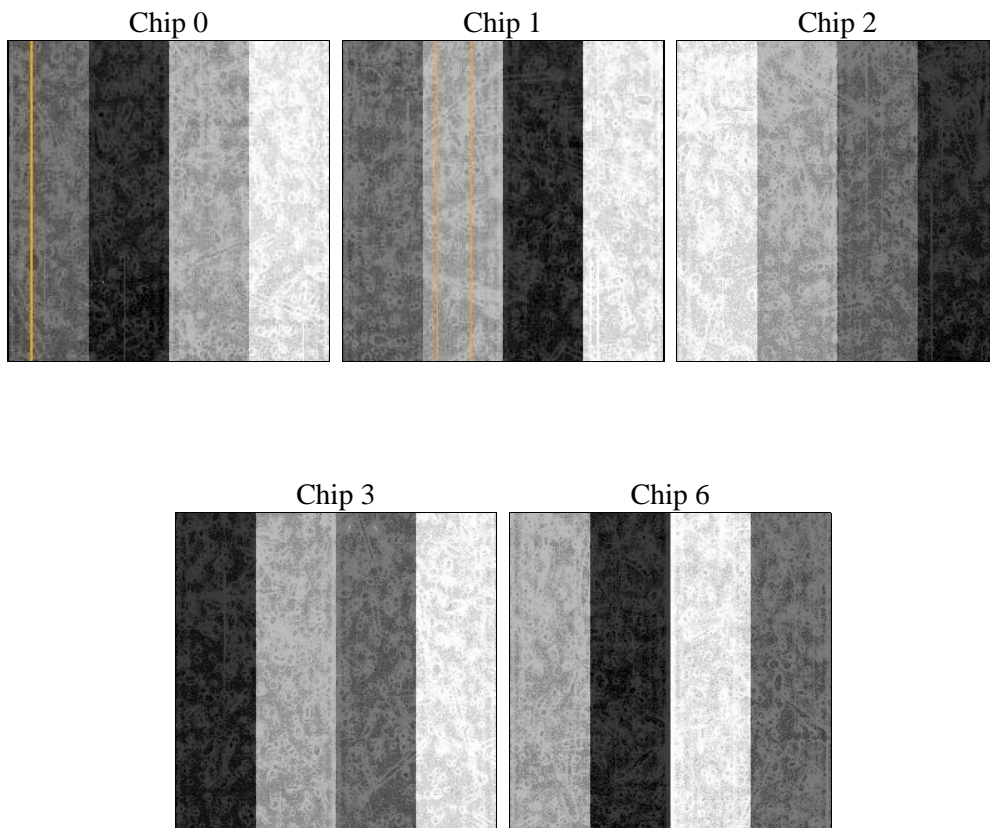
2 OBI

2.1 OBI

2.1.1 Images



2.1.2 Bias



2.1.3 Parameters

obi_num	0	Obi number	sched_exp_time	4700.000000	[s] Scheduled observation exposure time
ascdsver	8.4.3.1	Processing system revision	ontime	4472.9829208255	Sum of GTIs [s]
caldsver	4.4.9	 	ontime0	4476.0007910132	Sum of GTIs [s]
date	2012-04-07T12:57:08	Date and time of file creation	ontime1	4476.0418310165	Sum of GTIs [s]
revision	2	Processing version of data	ontime2	4472.9419106841	Sum of GTIs [s]
			ontime3	4472.9829208255	Sum of GTIs [s]
			ontime6	4475.959731102	Sum of GTIs [s]
			l1events	146426	Number of level 1 events

2.1.4 Events

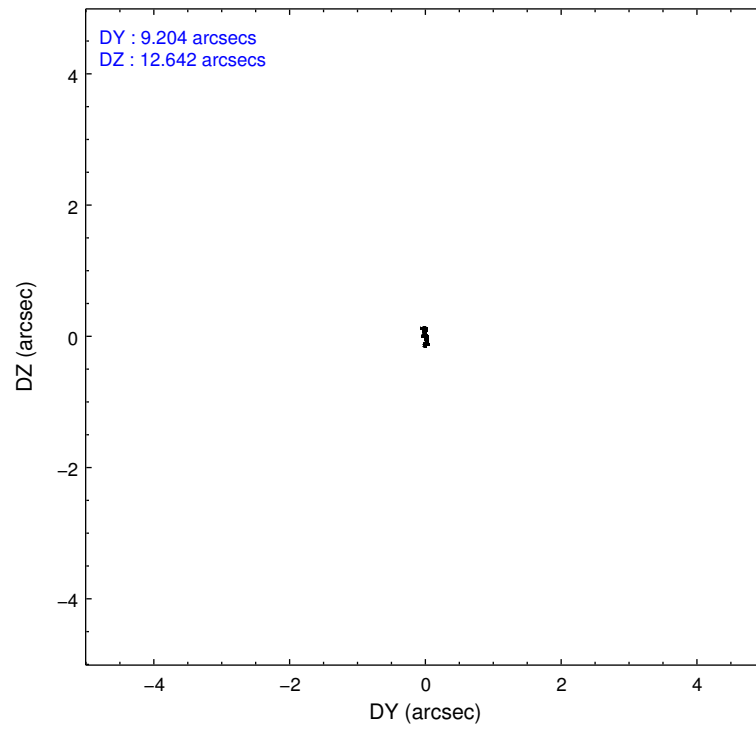
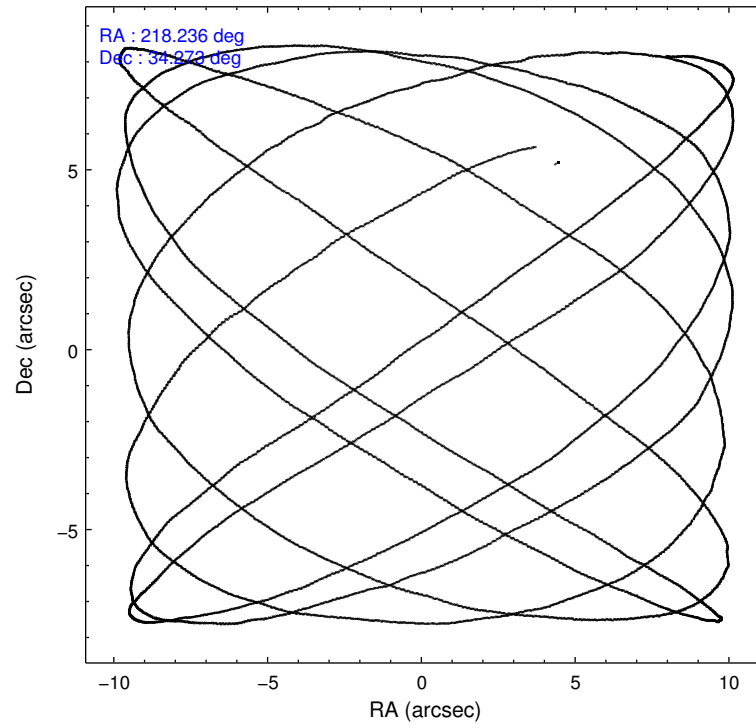
	ccd 0	ccd 1	ccd 2	ccd 3	ccd 6
level 1 events	26572	27113	31916	30693	30132
rejected events	23700	23991	29120	27837	27078
rejected %	89%	88%	91%	90%	89%

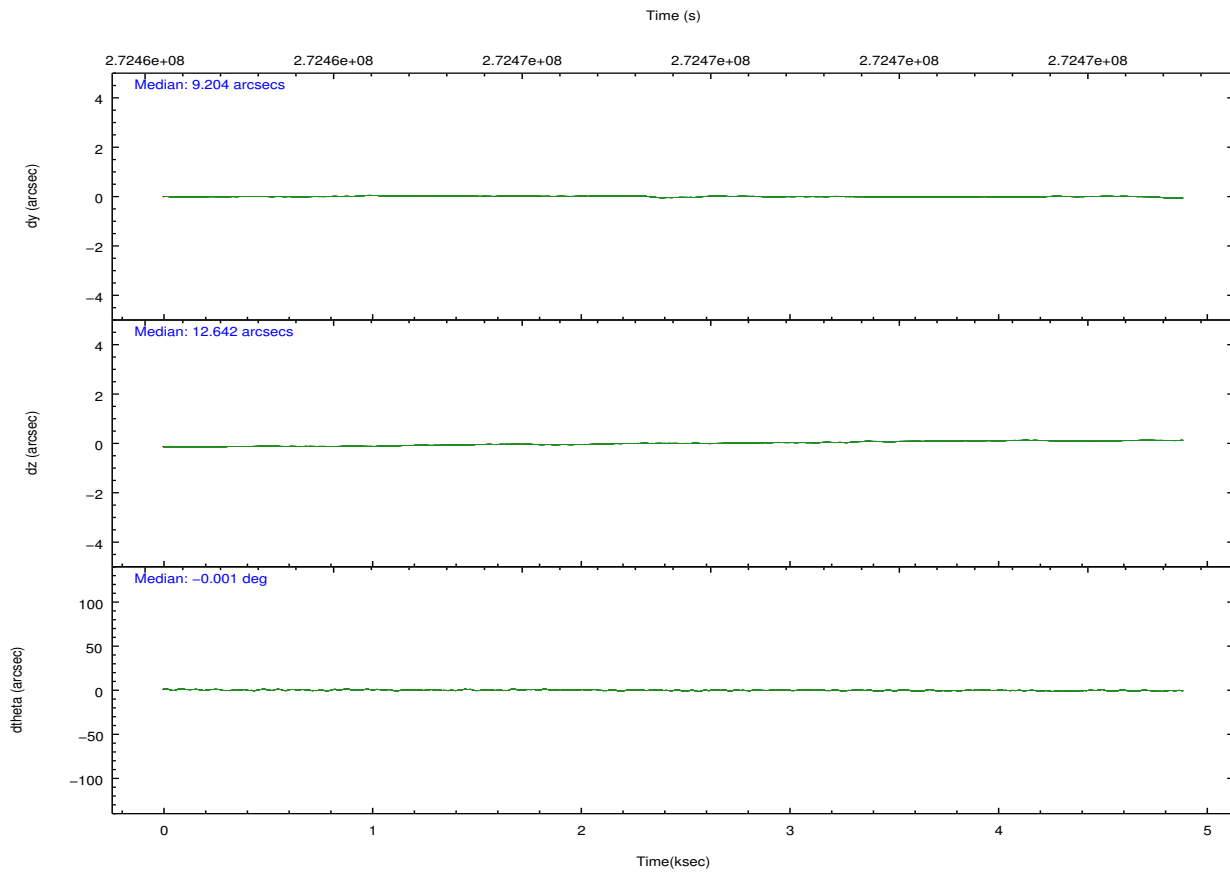
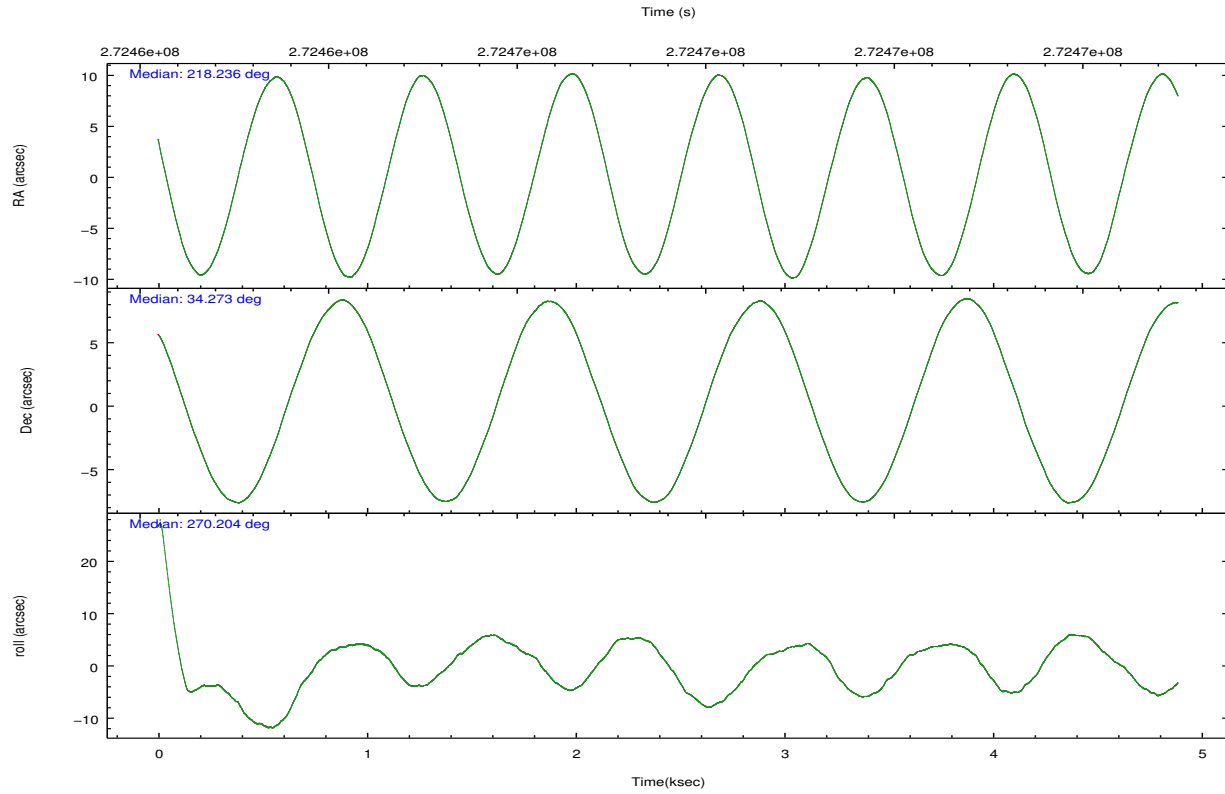
	ccd 0	ccd 1	ccd 2	ccd 3	ccd 6
grade 0 events	1008	1105	1084	1058	1059
	3%	4%	3%	3%	3%
grade 1 events	15	13	15	13	15
	0%	0%	0%	0%	0%
grade 2 events	665	643	625	600	699
	2%	2%	1%	1%	2%
grade 3 events	351	371	308	344	362
	1%	1%	0%	1%	1%
grade 4 events	324	384	324	328	302
	1%	1%	1%	1%	1%
grade 5 events	800	941	852	1009	988
	3%	3%	2%	3%	3%
grade 6 events	528	625	458	528	635
	1%	2%	1%	1%	2%
grade 7 events	22881	23031	28250	26813	26072
	86%	84%	88%	87%	86%

2.2 Compared Parameters

Parameter	Planned	Actual	Parameter	Planned	Actual
Instrument	ACIS	ACIS	Obspar format version number	7	7
Detector	ACIS-01236	ACIS-01236	Obspar file type	PREDICTED	ACTUAL
Grating	NONE	NONE	Obspar update status	NONE	UPDATED
Data mode	VFAINT	VFAINT	Number of optional ACIS chips dropped	0	0
Observation mode	POINTING	POINTING	On-chip summing requested	N	N
[deg] Pointing RA	218.219629	218.2364187227483	Subarray requested	NONE	NONE
[deg] Pointing Dec	34.296628	34.27296131734685	Alternating exposures requested	N	N
[deg] Pointing Roll	270.010685	270.2100153180795	[s] Primary exposure time	0.000000	3.1
[mm] SIM focus pos	-0.782348	-0.7809083437167272			
[mm] SIM defocus	0	0.001439871863259334			
[mm] SIM translation stage pos	-233.592463	-233.5874344608287			
[mm] SIM translation stage offset	0	-0.005018542100998502			
[s] Observation start time (MET)	272464536.184000	272464160.48616			
Observation start date	2006-08-20T12:34:31	2006-08-20T12:29:20			
[s] Observation end time (MET)	272469236.184000	272469370.0489			
Observation end date	2006-08-20T13:52:51	2006-08-20T13:56:10			
Read mode	TIMED	TIMED			

2.3 Aspect



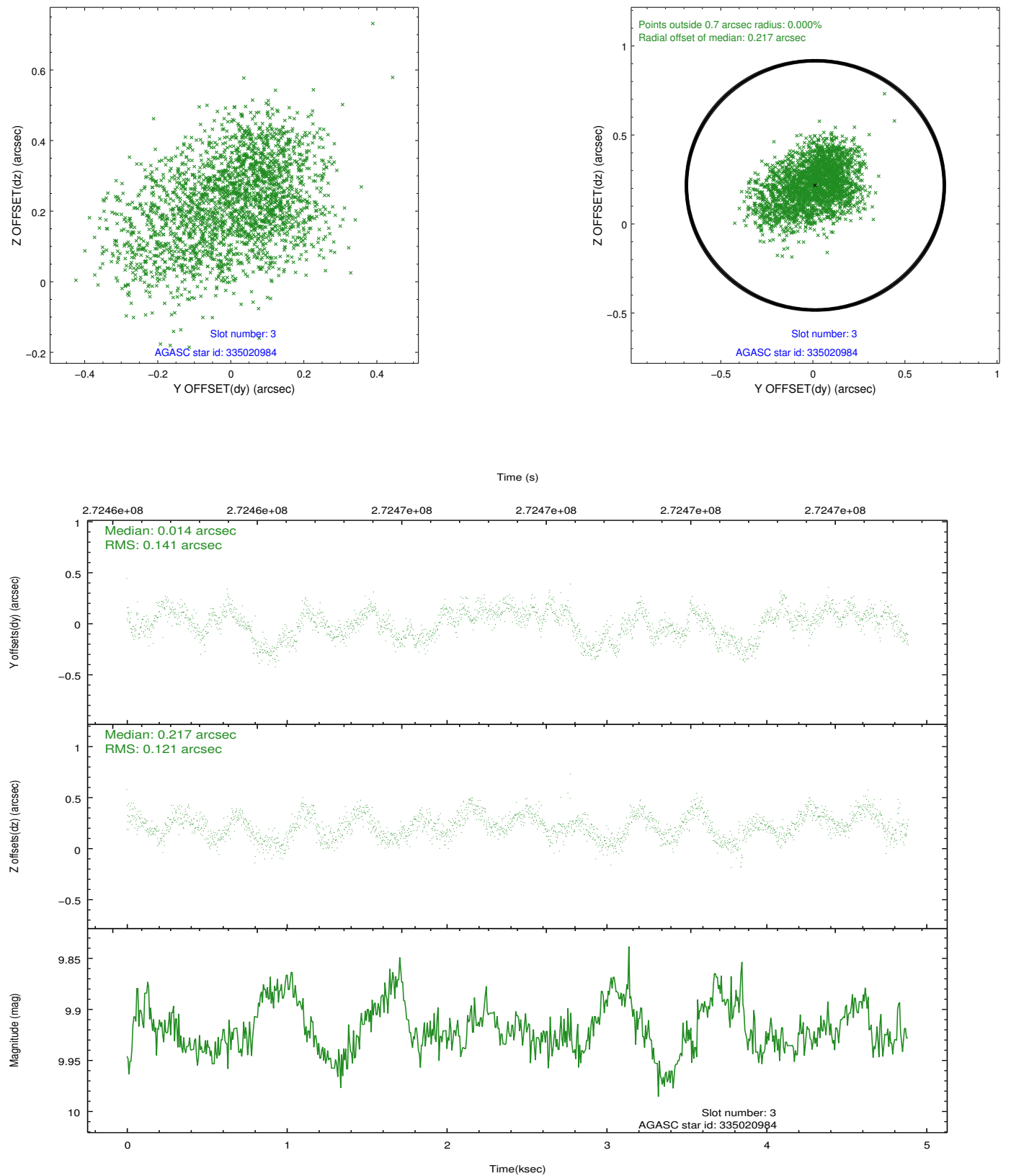


Slot Statistics

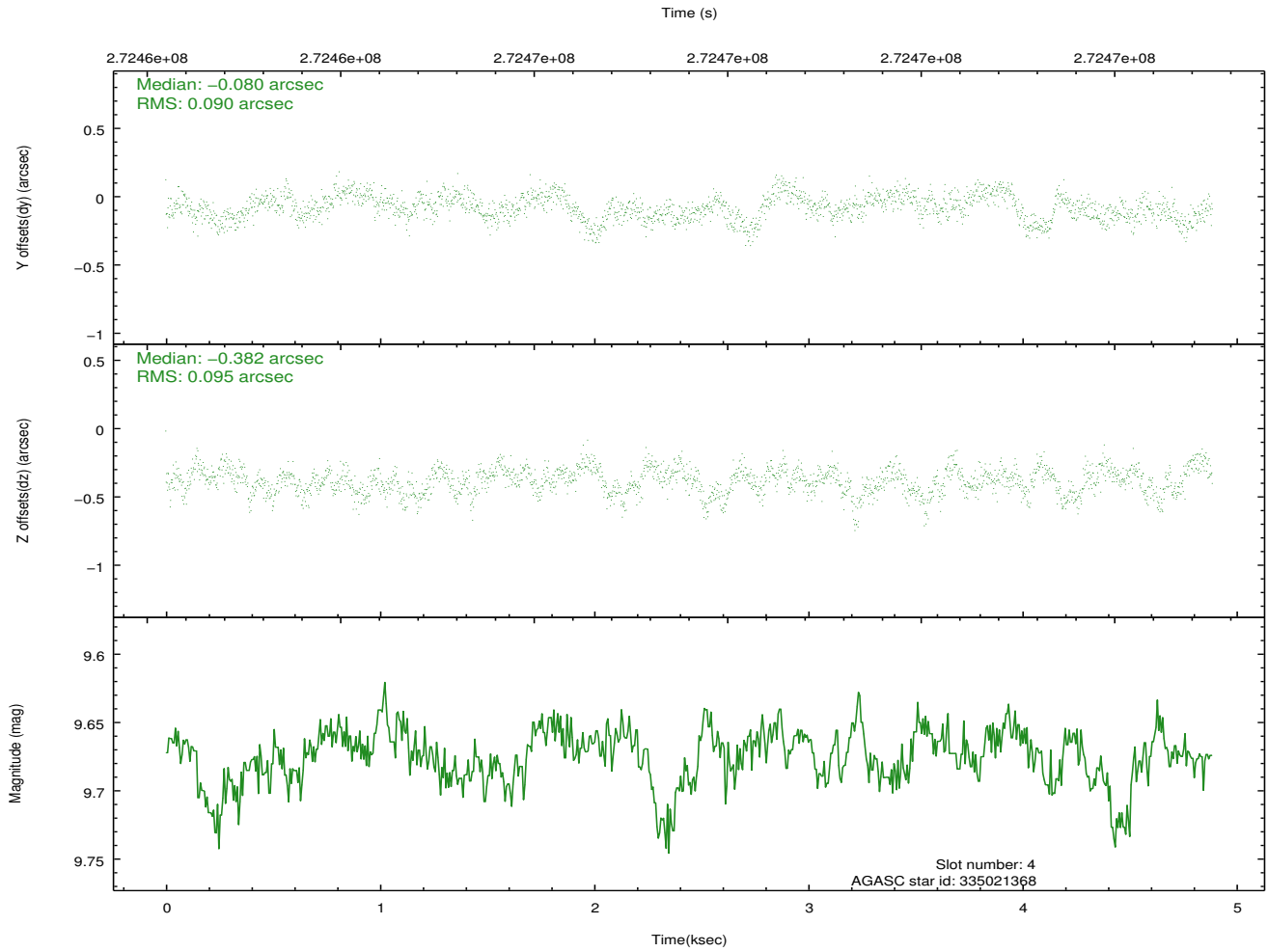
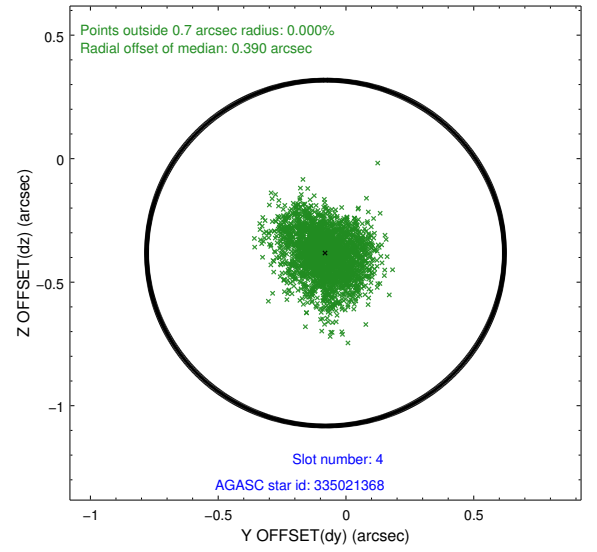
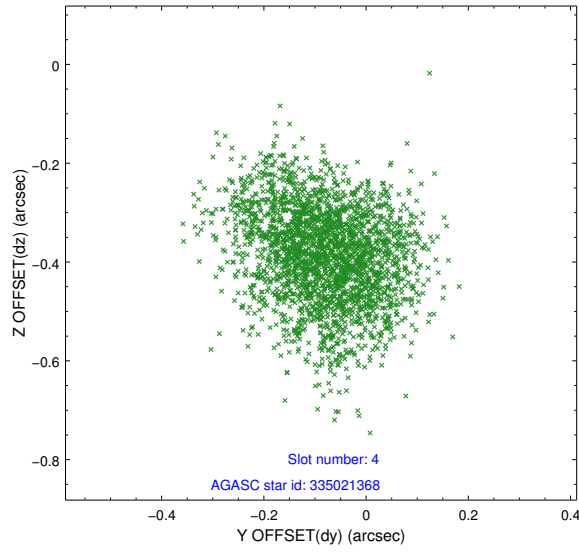
slot	status	id	mag	n_pts	med_dy	med_dz	dr1	dr2	ra	dec	mean_y	mean_z
0	FID	ACIS-I-1	7.24	1193	0.053	-0.026	0.007	0.013	0.000000	0.000000	930.46	-836.21
1	FID	ACIS-I-5	7.23	1193	-0.207	0.058	0.008	0.013	0.000000	0.000000	-1817.19	1060.77
2	FID	ACIS-I-6	7.24	1193	0.062	0.038	0.007	0.012	0.000000	0.000000	394.69	1706.64
3	GUIDE	335020984	9.92	2380	0.014	0.217	0.200	0.317	218.841668	33.815112	1727.24	1860.35
4	GUIDE	335021368	9.67	2380	-0.080	-0.382	0.141	0.221	217.529643	33.934817	1296.08	-2060.31
5	GUIDE	335023288	9.87	2384	0.635	-0.036	0.156	0.236	217.791365	34.425735	-466.37	-1272.29
6	GUIDE	335023304	8.41	2385	-0.201	0.155	0.082	0.136	218.883608	34.686545	-1410.38	1965.59
7	GUIDE	335023248	8.93	2381	-0.345	0.051	0.107	0.161	217.634832	34.944512	-2338.50	-1724.42

2.4 Star Slots

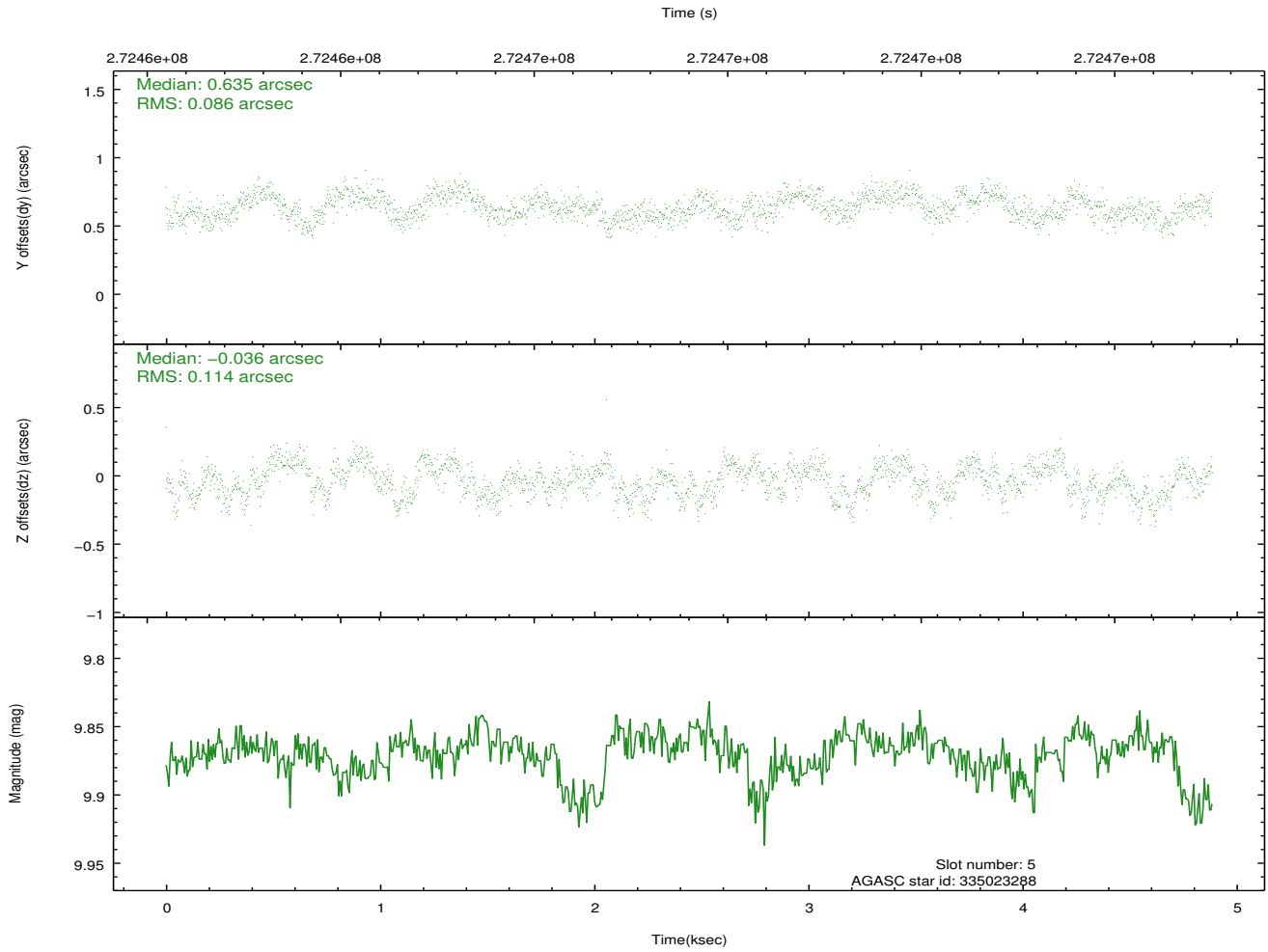
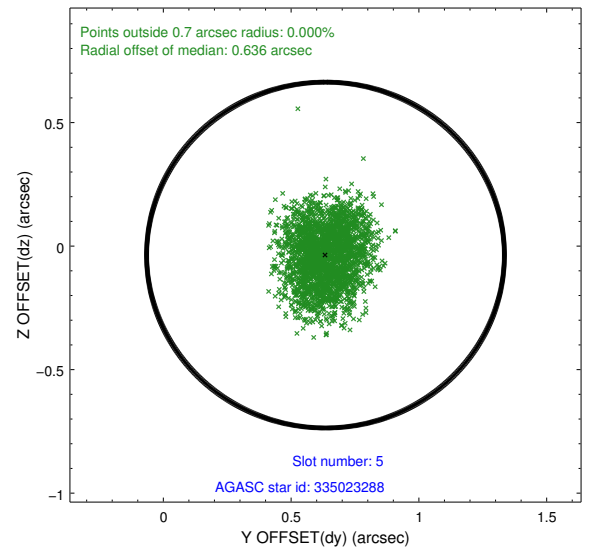
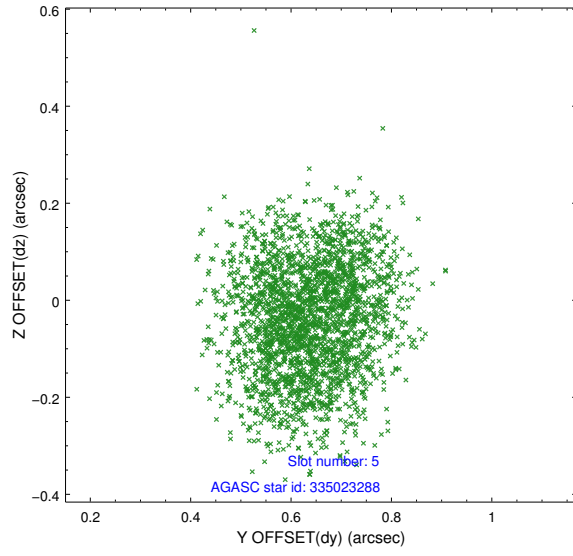
2.4.1 Slot 3



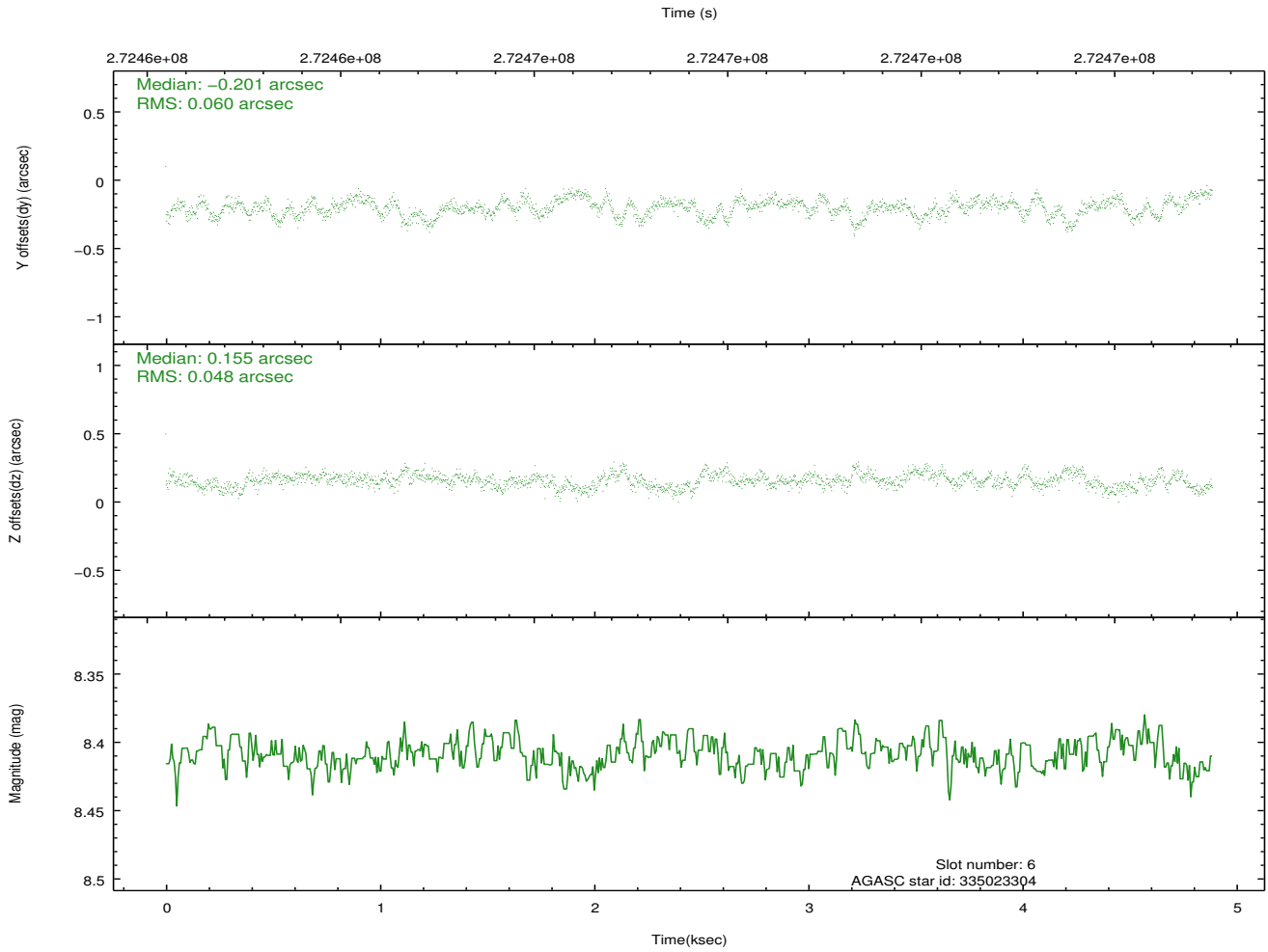
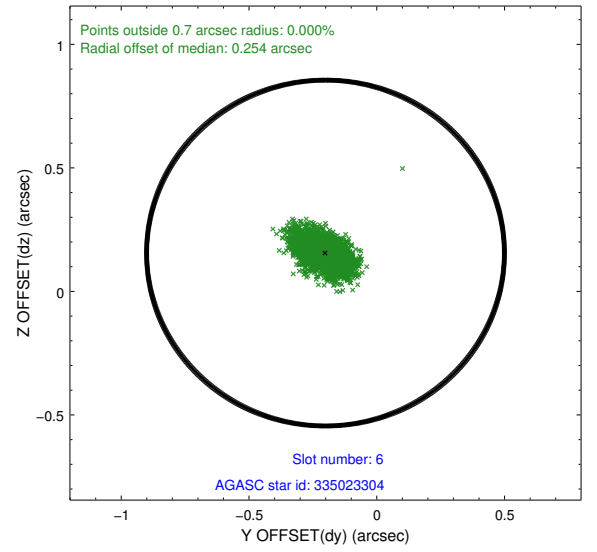
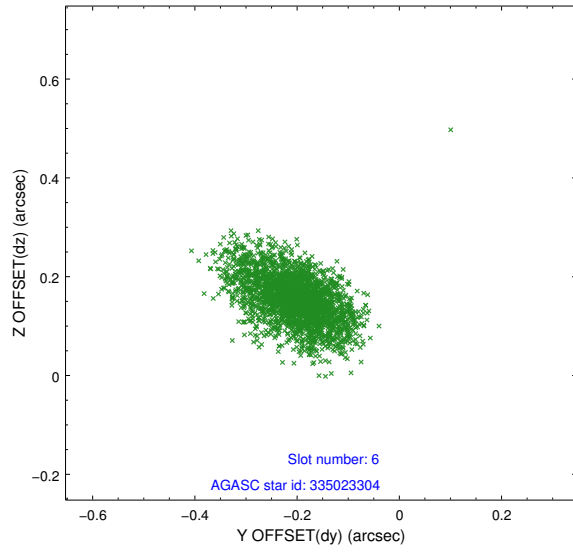
2.4.2 Slot 4



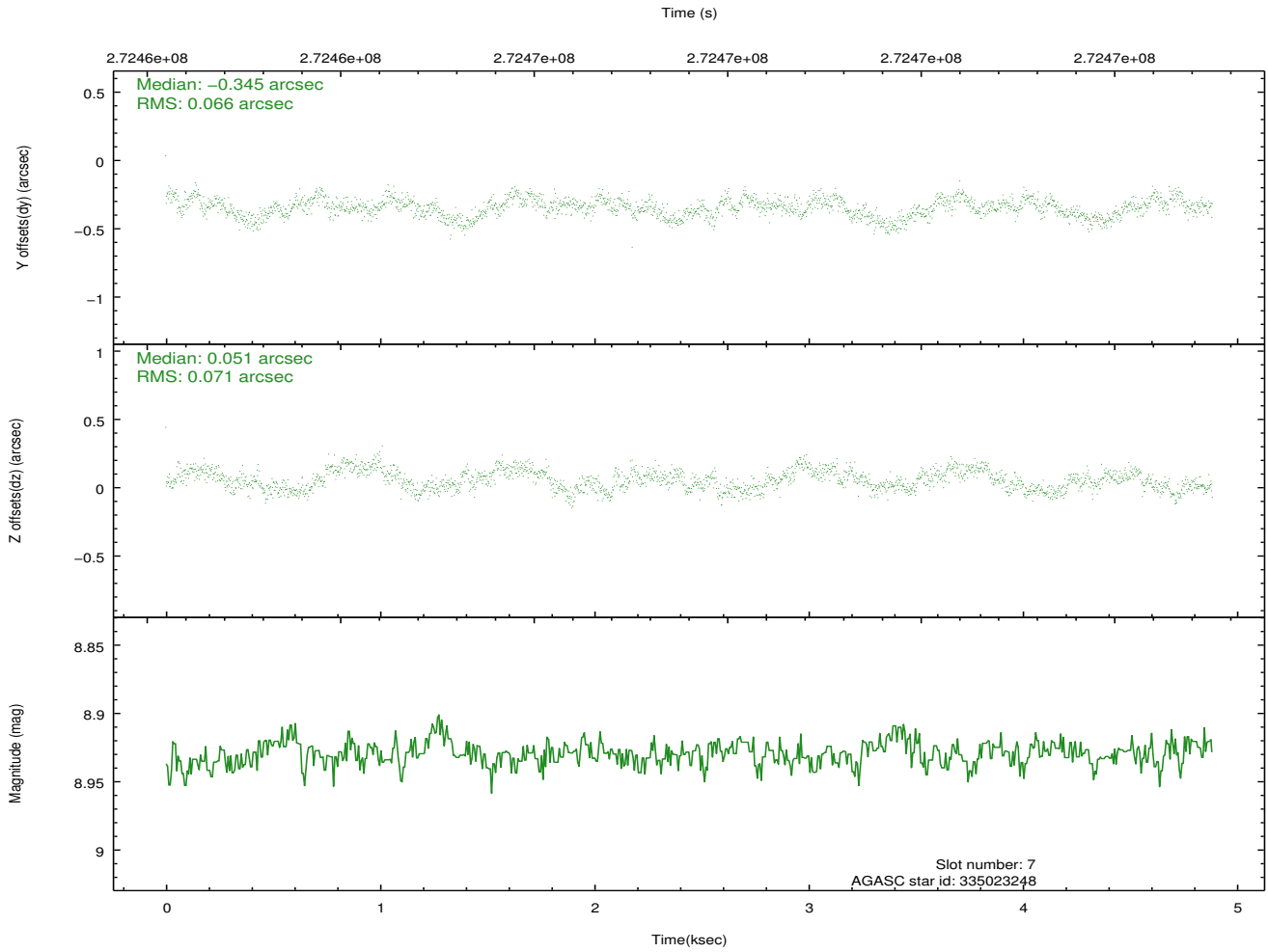
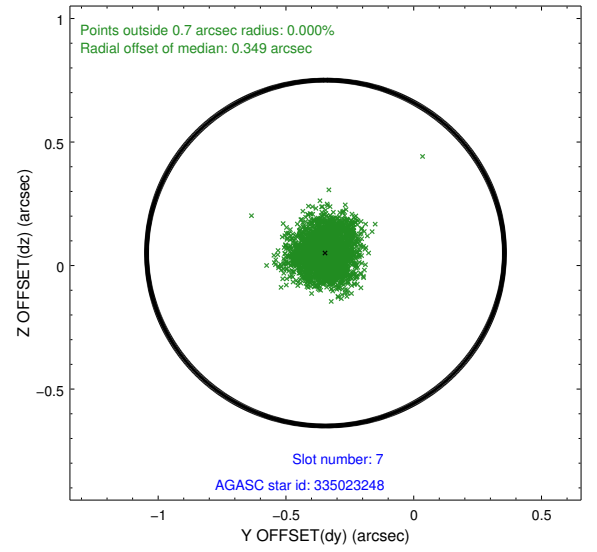
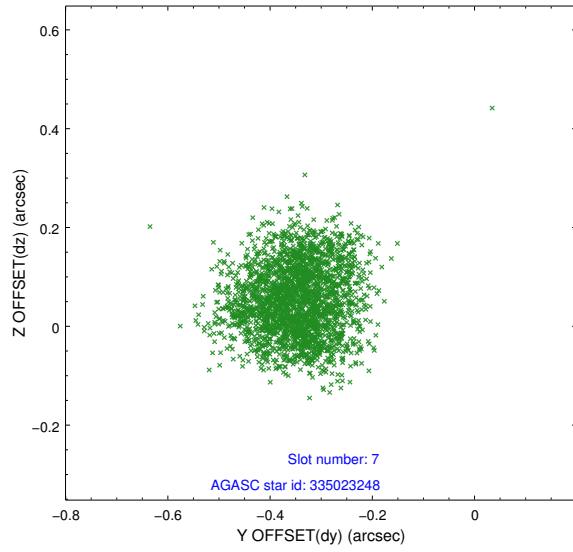
2.4.3 Slot 5



2.4.4 Slot 6

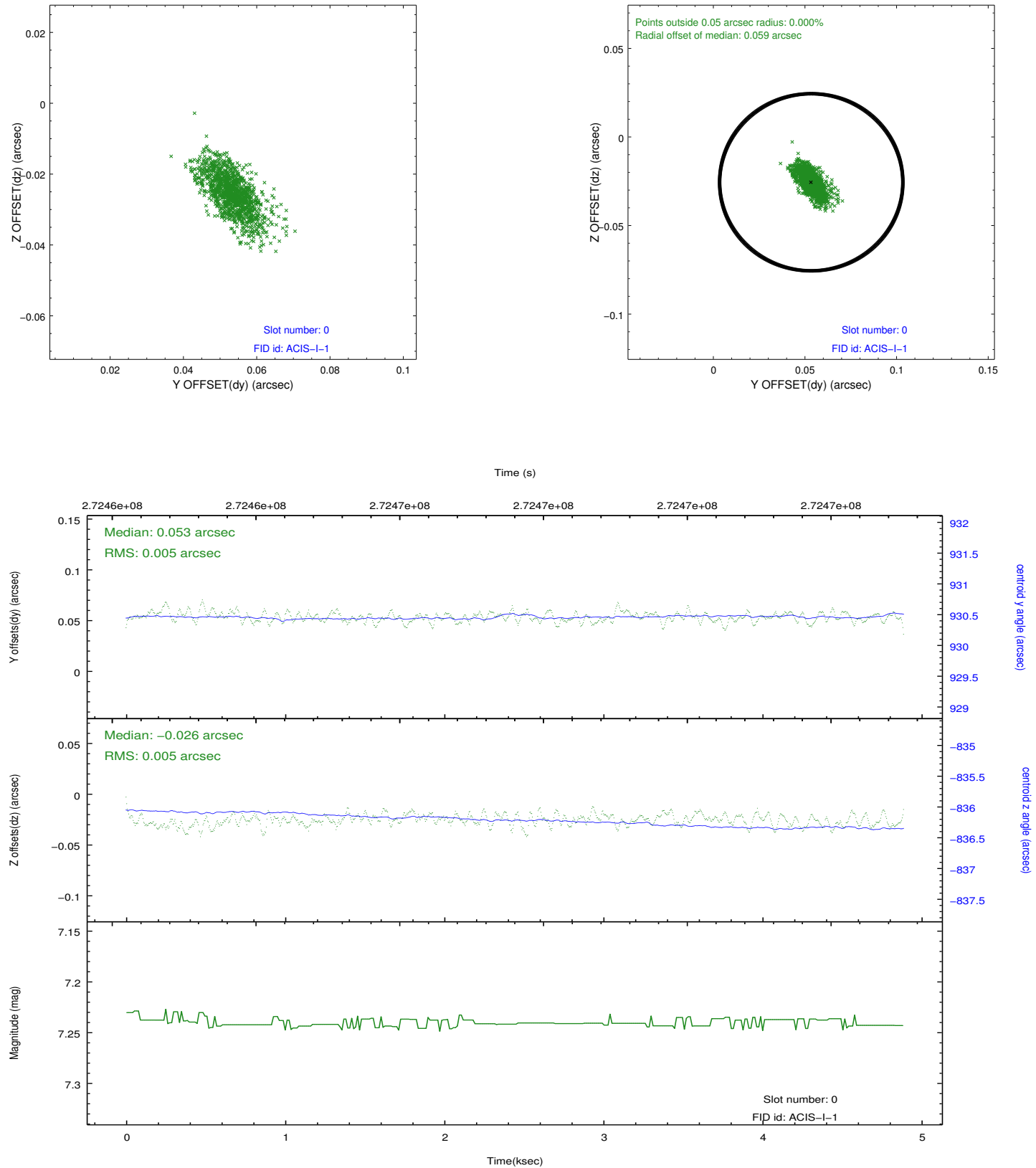


2.4.5 Slot 7

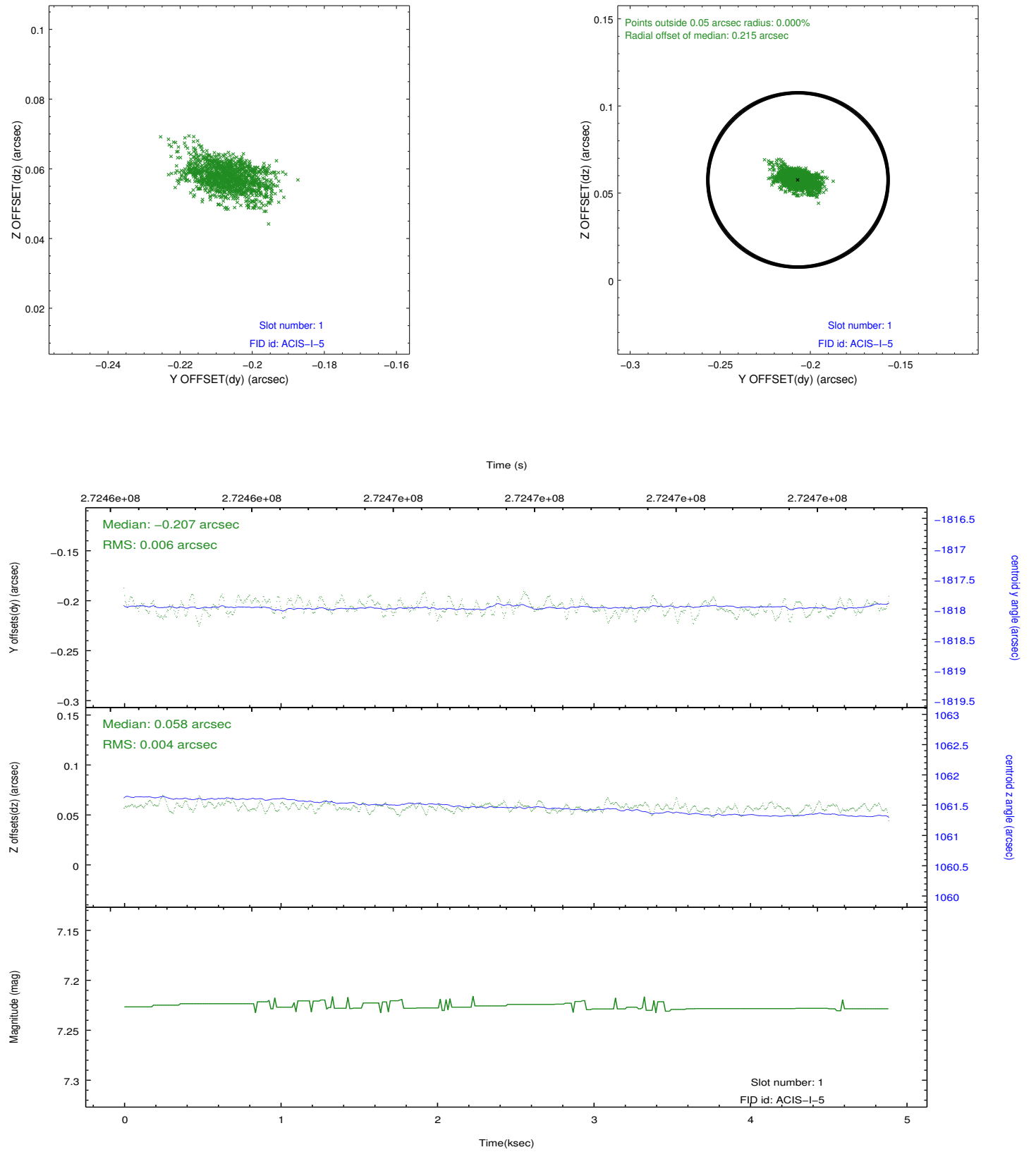


2.5 FID Slots

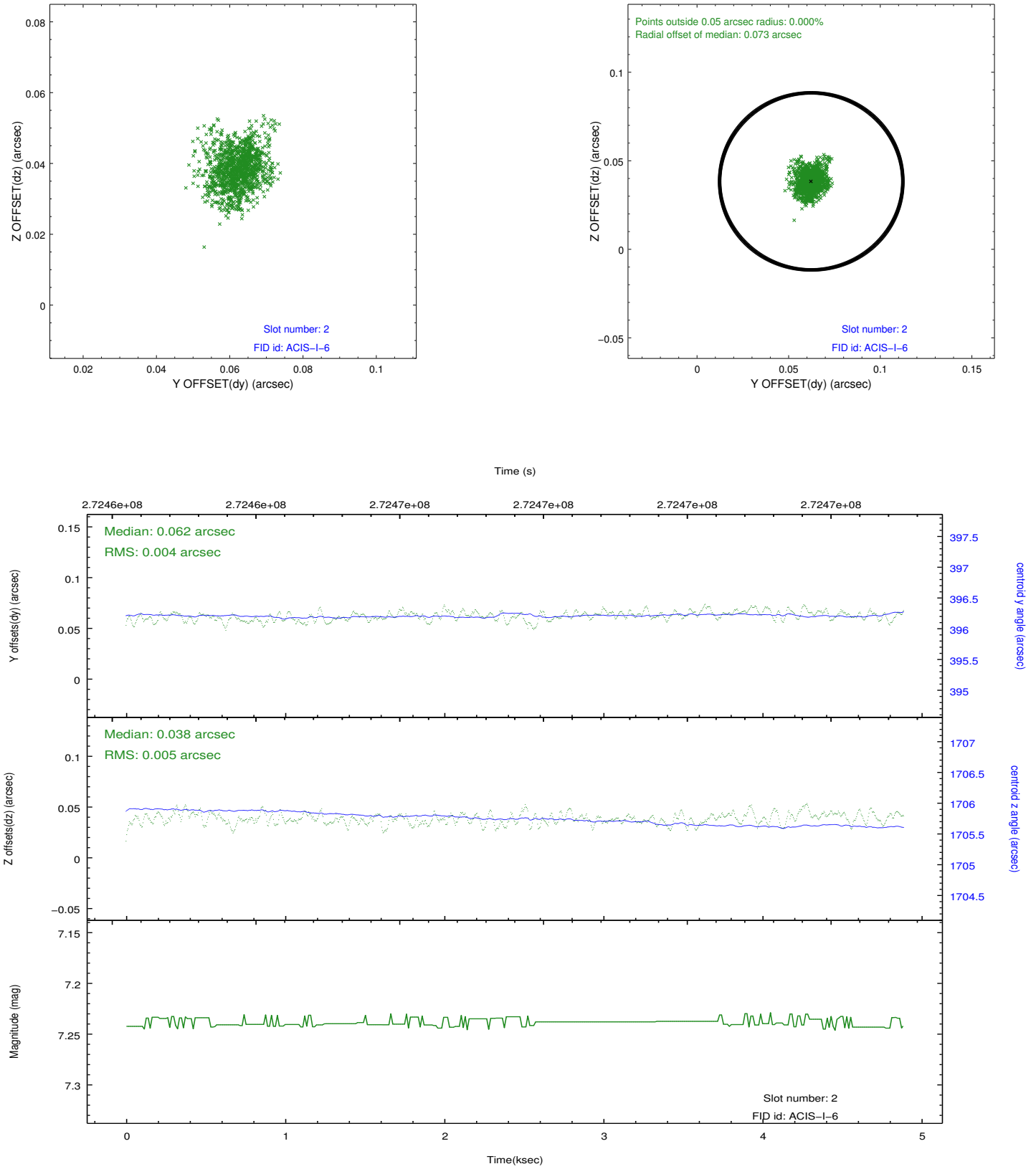
2.5.1 Slot 0



2.5.2 Slot 1



2.5.3 Slot 2



A Summary

A.1 Status

V&V Scientist	Jen Lauer
V&V Date (YYYY-MM-DD)	2012.04.08
V&V Edition	1
V&V Disposition and Status	OK
V&V Charge Time	4.47325904

A.2 Comments