

V&V Reference Report

L2 ASCDS Version : 8.4.3

Observation 6957 - L2 Version 2
Chandra X-Ray Center

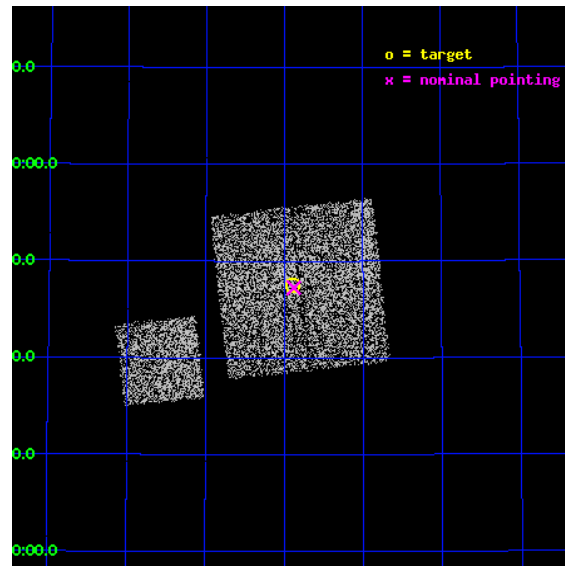
L2 Processing Date : Apr 3 2012

Contents

1	Front	2
2	OBI	3
2.1	OBI	3
2.1.1	Images	3
2.1.2	Bias	3
2.1.3	Parameters	4
2.1.4	Events	4
2.2	Compared Parameters	5
2.3	Aspect	6
2.4	Star Slots	9
2.4.1	Slot 3	9
2.4.2	Slot 4	10
2.4.3	Slot 5	11
2.4.4	Slot 6	12
2.4.5	Slot 7	13
2.5	FID Slots	14
2.5.1	Slot 0	14
2.5.2	Slot 1	15
2.5.3	Slot 2	16
A	Summary	17
A.1	Status	17
A.2	Comments	17

1 Front

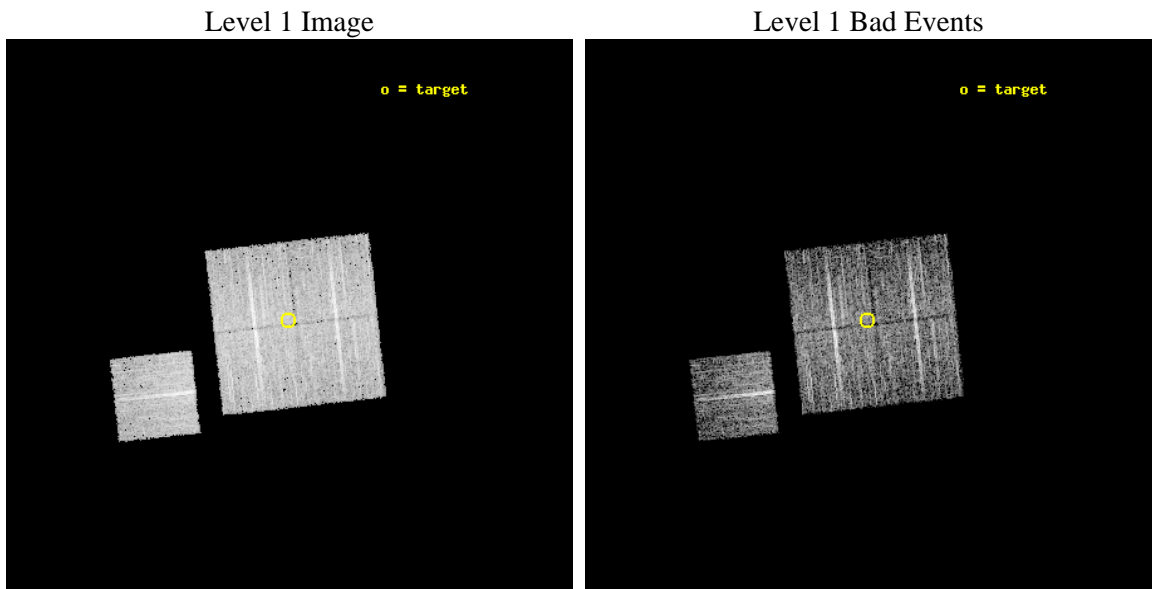
seq_num	800590	Sequence number
obs_id	6957	Observation id
title	A Search for the Origin of Ultrahigh Energy Cosmic Rays	Proposal t
observer	Prof. David Helfand	Principal investigator
object	P1	Source name
dtcycle	0	
cycle	P	events from which exps? Prim/Second/Both
ra_targ	170.474	Observer's specified target RA [deg]
dec_targ	56.7917	Observer's specified target Dec [deg]
ra_nom	170.46973445155	Nominal RA [deg]
dec_nom	56.787530390058	Nominal Dec [deg]
roll_nom	263.763520965	Nominal Roll [deg]
revision	2	Processing version of data
ontime	5043.6999902725	Sum of GTIs [s]
liveltime	4977.8003367817	Livetime [s]
ontime0	5043.6999902725	Sum of GTIs [s]
ontime1	5043.6999902725	Sum of GTIs [s]
ontime2	5043.6999902725	Sum of GTIs [s]
ontime3	5043.6999902725	Sum of GTIs [s]
ontime6	5040.5590001345	Sum of GTIs [s]
l2events	15522	Number of level 2 events



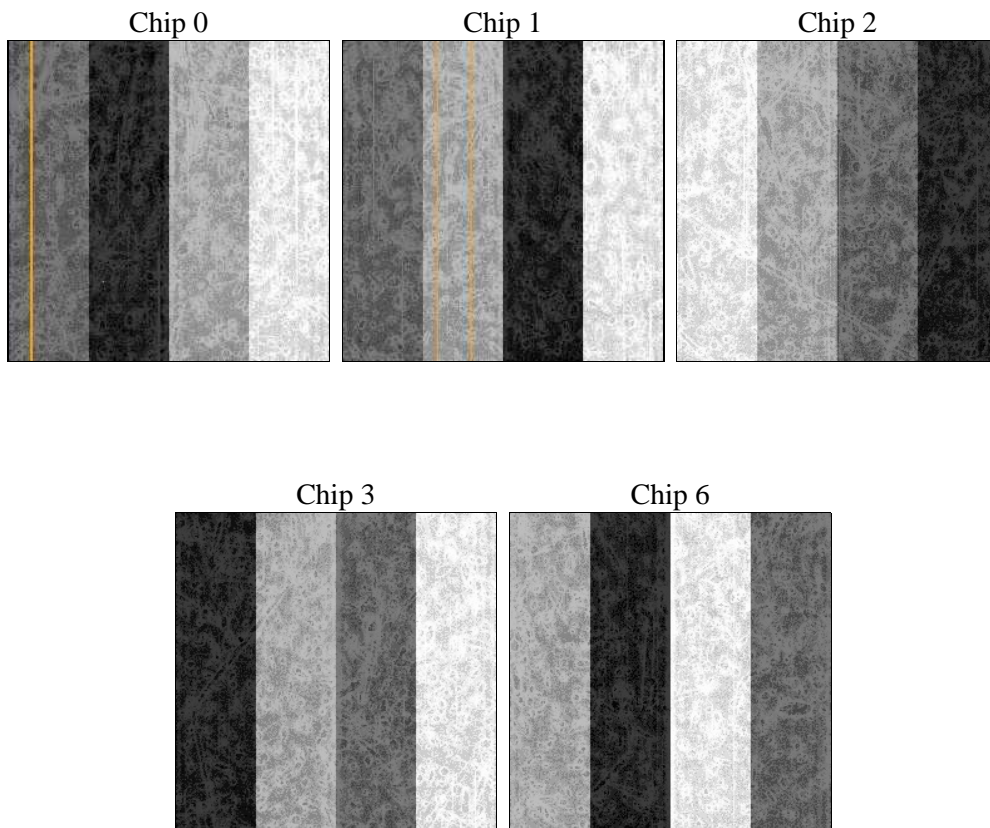
2 OBI

2.1 OBI

2.1.1 Images



2.1.2 Bias



2.1.3 Parameters

obi_num	0	Obi number	sched_exp_time	5000.000000	[s] Scheduled observation exposure time
ascdsver	8.4.3.1	Processing system revision	ontime	5043.6999902725	Sum of GTIs [s]
caldsver	4.4.9	 	ontime0	5043.6999902725	Sum of GTIs [s]
date	2012-04-03T12:15:12	Date and time of file creation	ontime1	5043.6999902725	Sum of GTIs [s]
revision	2	Processing version of data	ontime2	5043.6999902725	Sum of GTIs [s]
			ontime3	5043.6999902725	Sum of GTIs [s]
			ontime6	5040.5590001345	Sum of GTIs [s]
			l1events	187533	Number of level 1 events

2.1.4 Events

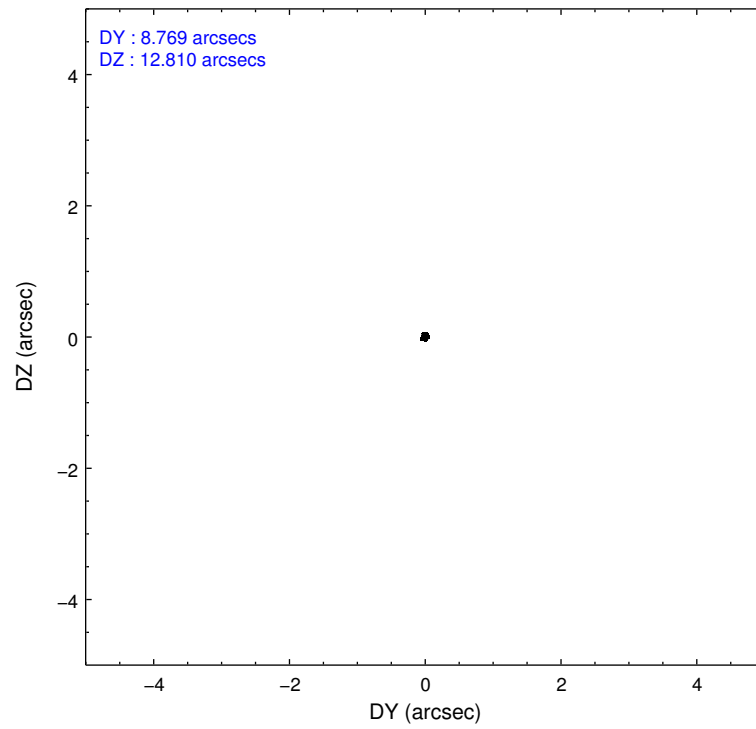
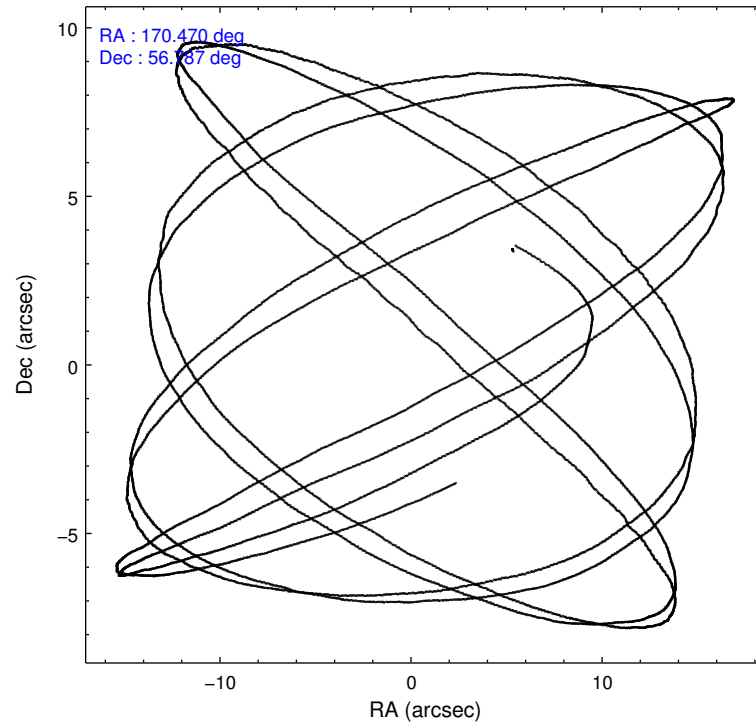
	ccd 0	ccd 1	ccd 2	ccd 3	ccd 6
level 1 events	35910	35390	40915	37962	37356
rejected events	32282	31236	37334	34417	33560
rejected %	89%	88%	91%	90%	89%

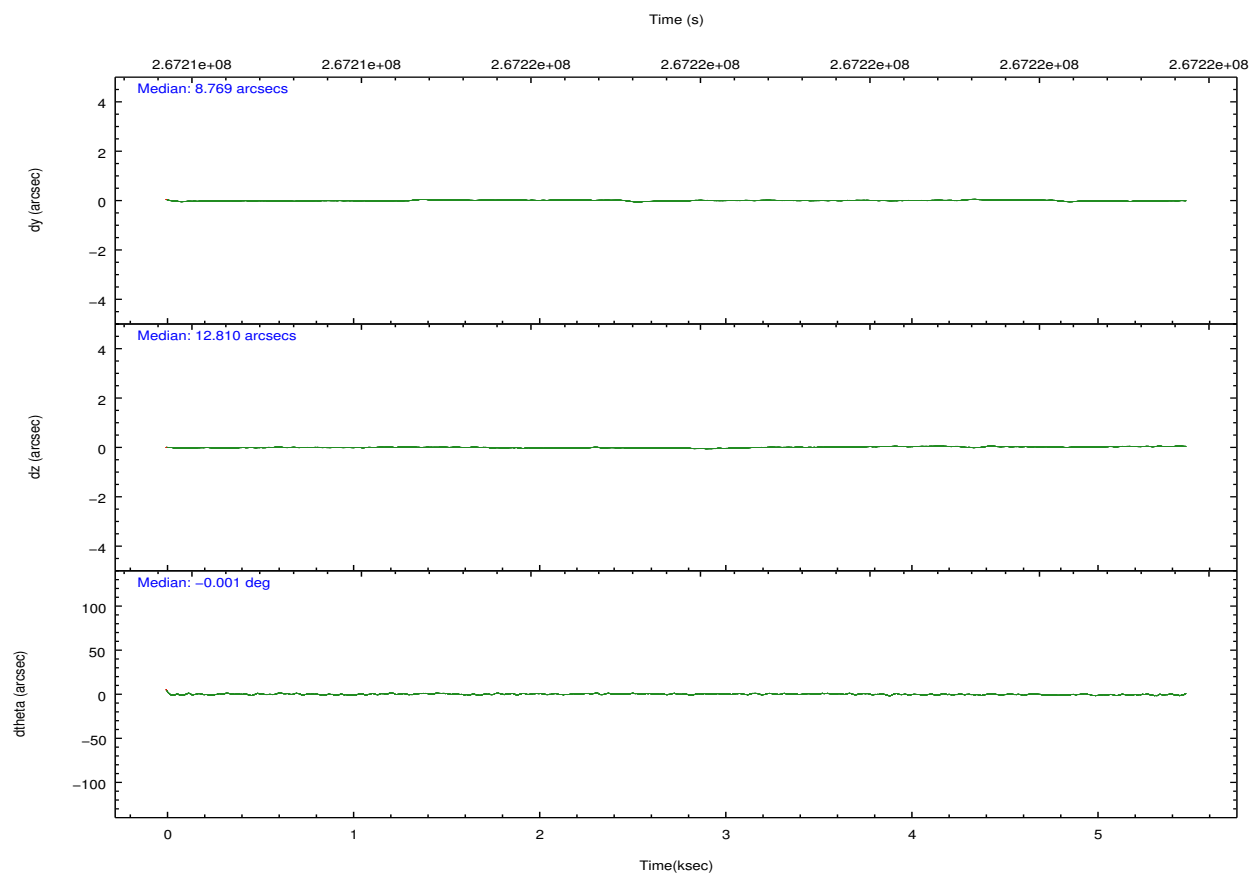
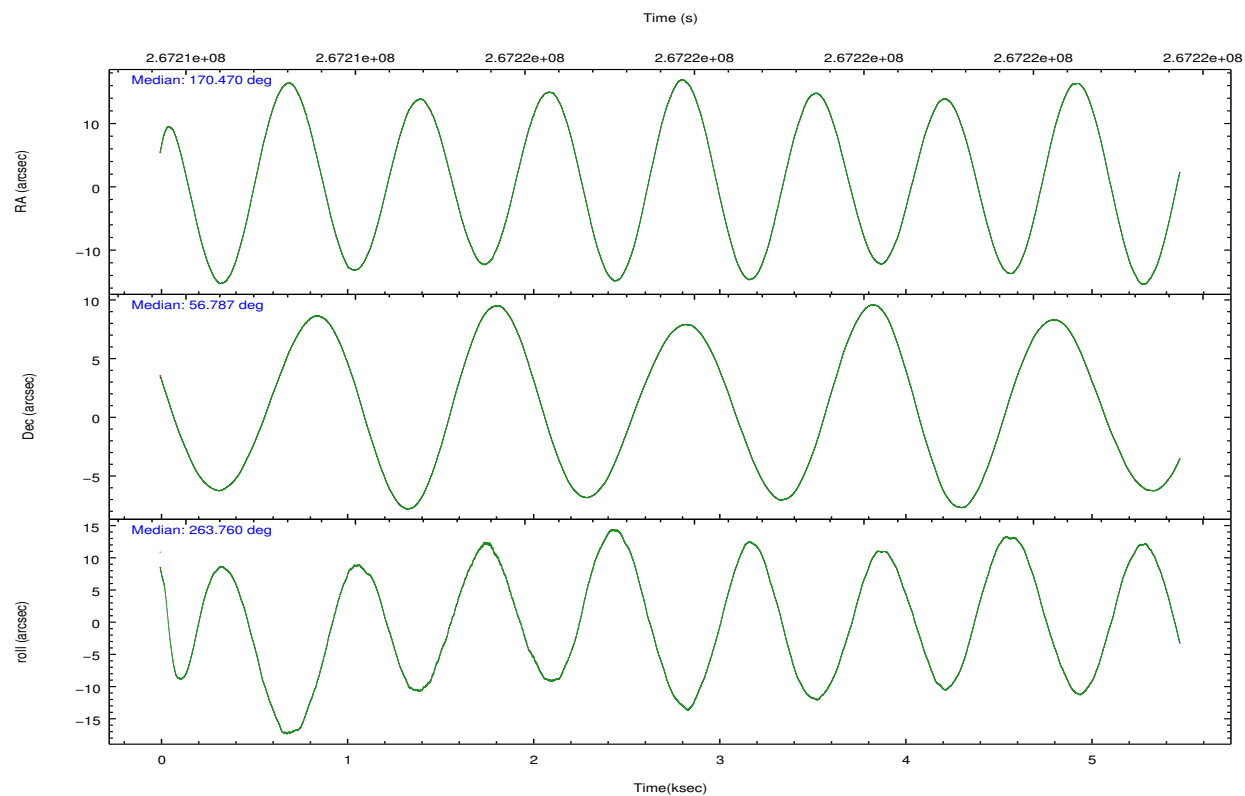
	ccd 0	ccd 1	ccd 2	ccd 3	ccd 6
grade 0 events	1247	1459	1220	1241	1252
	3%	4%	2%	3%	3%
grade 1 events	25	16	13	21	13
	0%	0%	0%	0%	0%
grade 2 events	915	920	920	759	859
	2%	2%	2%	1%	2%
grade 3 events	422	489	365	421	434
	1%	1%	0%	1%	1%
grade 4 events	374	456	376	387	436
	1%	1%	0%	1%	1%
grade 5 events	1275	1422	1208	1591	1510
	3%	4%	2%	4%	4%
grade 6 events	674	836	706	742	821
	1%	2%	1%	1%	2%
grade 7 events	30978	29792	36107	32800	32031
	86%	84%	88%	86%	85%

2.2 Compared Parameters

Parameter	Planned	Actual	Parameter	Planned	Actual
Instrument	ACIS	ACIS	Obspar format version number	7	7
Detector	ACIS-01236	ACIS-01236	Obspar file type	PREDICTED	ACTUAL
Grating	NONE	NONE	Obspar update status	NONE	UPDATED
Data mode	VFAINT	VFAINT	Number of optional ACIS chips dropped	0	0
Observation mode	POINTING	POINTING	On-chip summing requested	N	N
[deg] Pointing RA	170.449530	170.4697344515516	Subarray requested	NONE	NONE
[deg] Pointing Dec	56.812654	56.78753039005842	Alternating exposures requested	N	N
[deg] Pointing Roll	263.571705	263.7635209650048	[s] Primary exposure time	0.000000	3.1
[mm] SIM focus pos	-0.782348	-0.7809083437167272			
[mm] SIM defocus	0	0.001439871863259334			
[mm] SIM translation stage pos	-233.592463	-233.5874344608287			
[mm] SIM translation stage offset	0	-0.005018542100998502			
[s] Observation start time (MET)	267213592.184000	267212515.85255			
Observation start date	2006-06-20T17:58:47	2006-06-20T17:41:55			
[s] Observation end time (MET)	267218592.184000	267218726.32784			
Observation end date	2006-06-20T19:22:07	2006-06-20T19:25:26			
Read mode	TIMED	TIMED			

2.3 Aspect



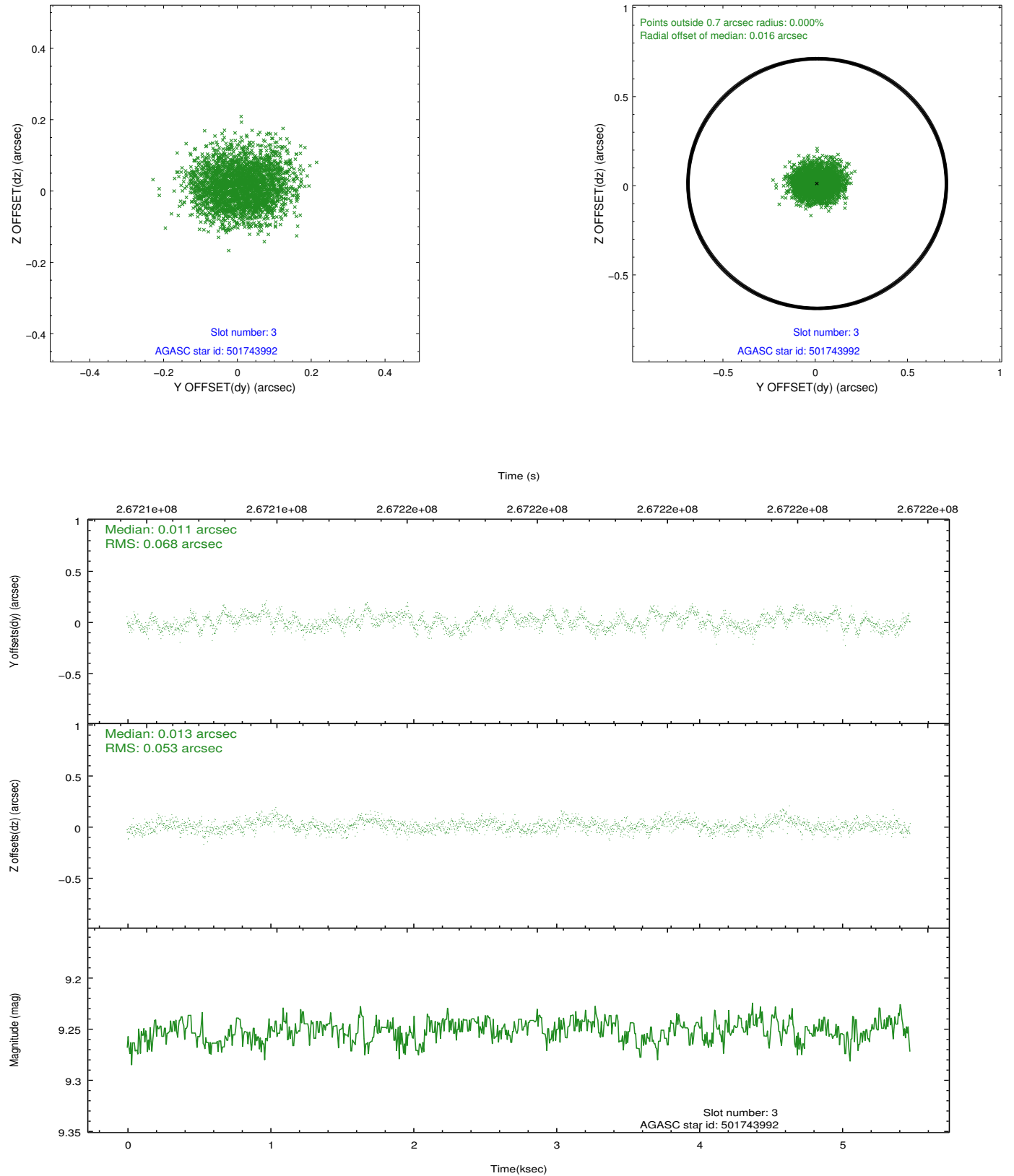


Slot Statistics

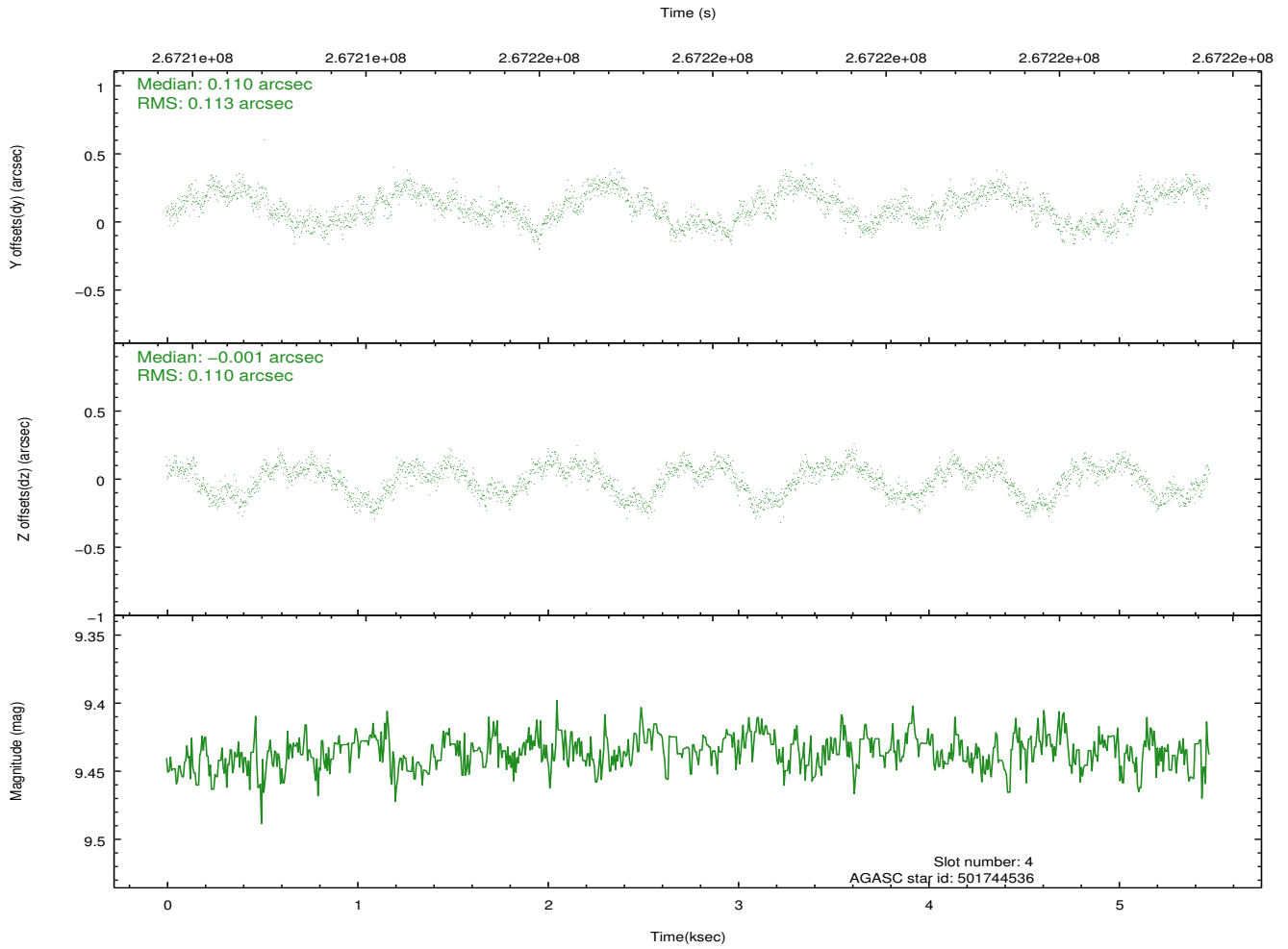
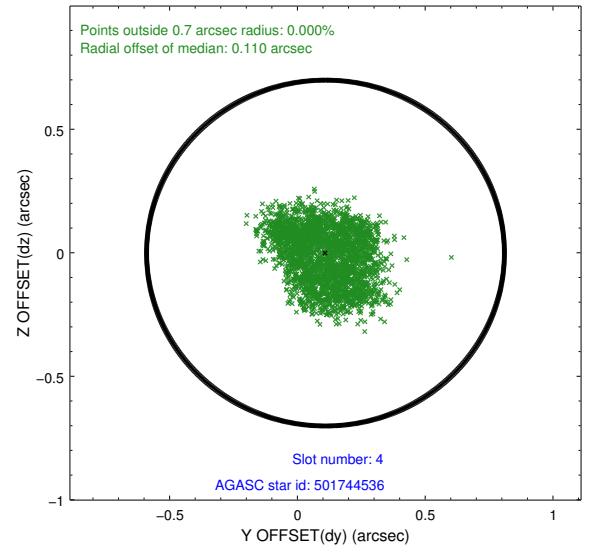
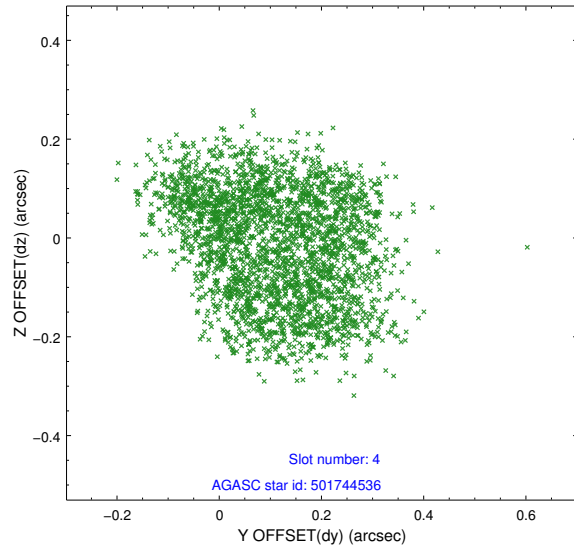
slot	status	id	mag	n_pts	med_dy	med_dz	dr1	dr2	ra	dec	mean_y	mean_z
0	FID	ACIS-I-2	7.14	1336	-0.095	-0.077	0.018	0.031	0.000000	0.000000	-763.42	-842.78
1	FID	ACIS-I-4	7.20	1337	0.222	0.078	0.009	0.015	0.000000	0.000000	2150.49	1062.93
2	FID	ACIS-I-5	7.22	1337	-0.229	0.067	0.013	0.022	0.000000	0.000000	-1815.93	1062.11
3	GUIDE	501743992	9.25	2673	0.011	0.013	0.092	0.145	171.332971	56.300358	1623.62	1959.17
4	GUIDE	501744536	9.44	2670	0.110	-0.001	0.174	0.248	169.793252	56.284902	2029.25	-1090.01
5	GUIDE	501745560	6.82	2674	-0.131	0.113	0.076	0.129	170.455367	57.074858	-938.76	-94.77
6	GUIDE	501745960	8.45	2673	0.034	-0.089	0.069	0.106	170.066430	56.606700	819.26	-671.28
7	GUIDE	501748320	9.51	2672	-0.027	-0.028	0.095	0.154	170.966165	57.350324	-2039.35	780.47

2.4 Star Slots

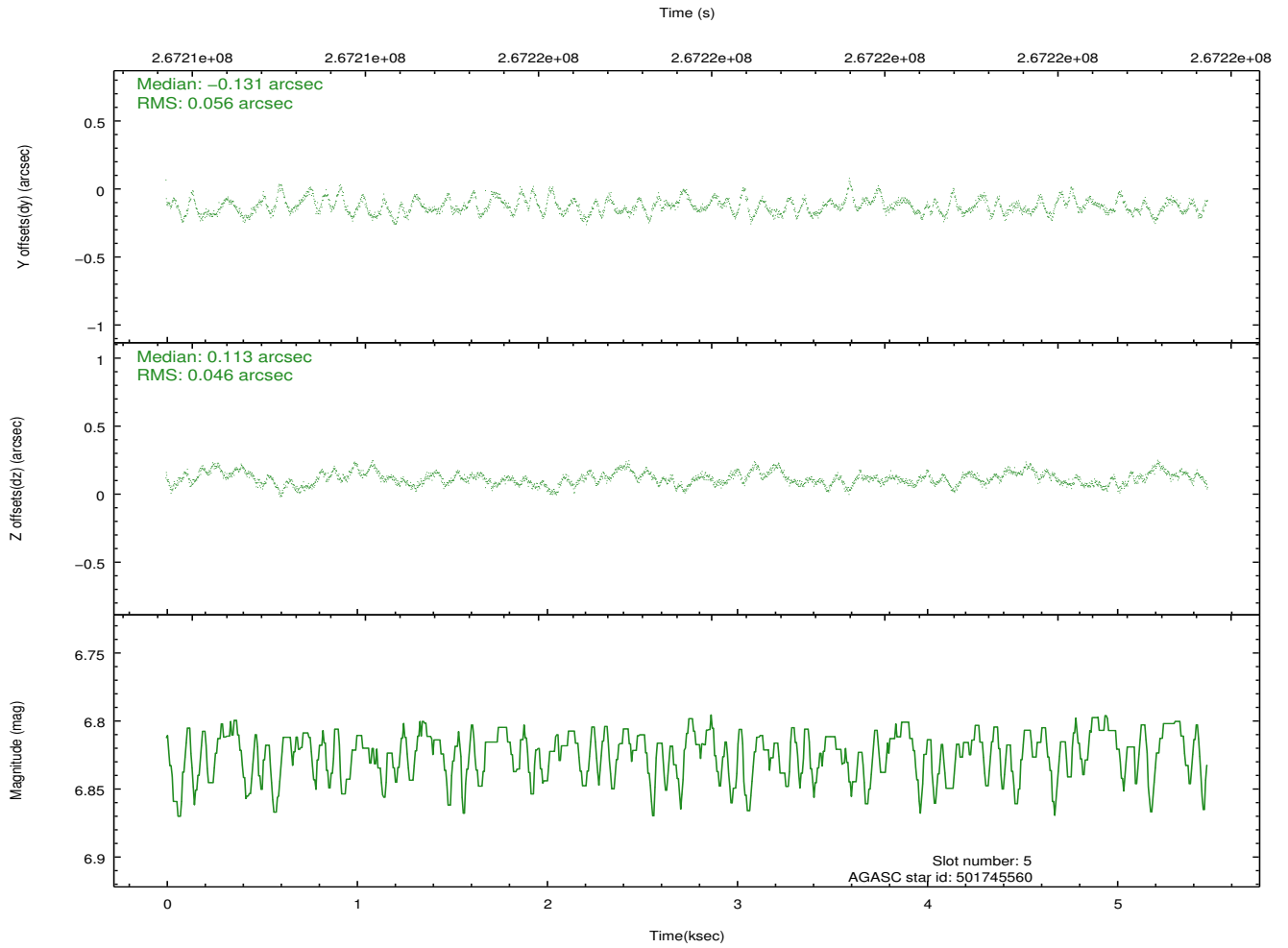
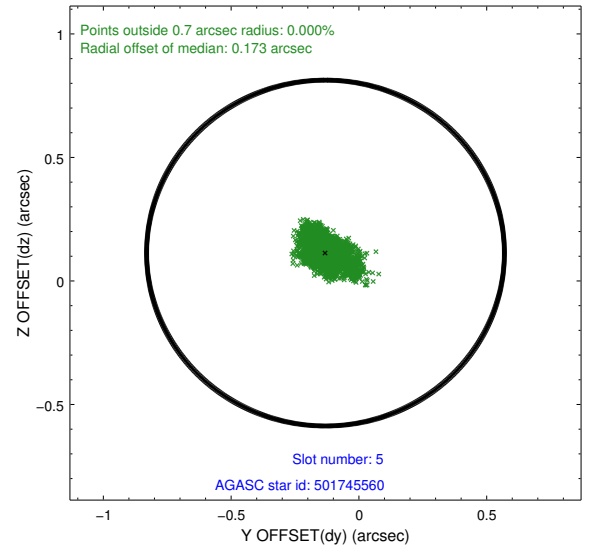
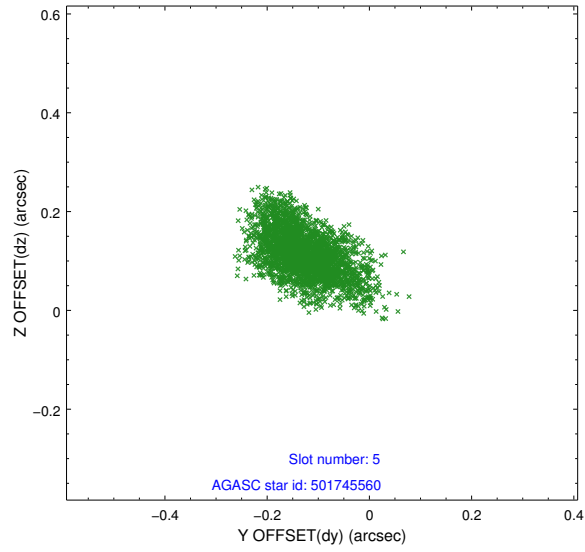
2.4.1 Slot 3



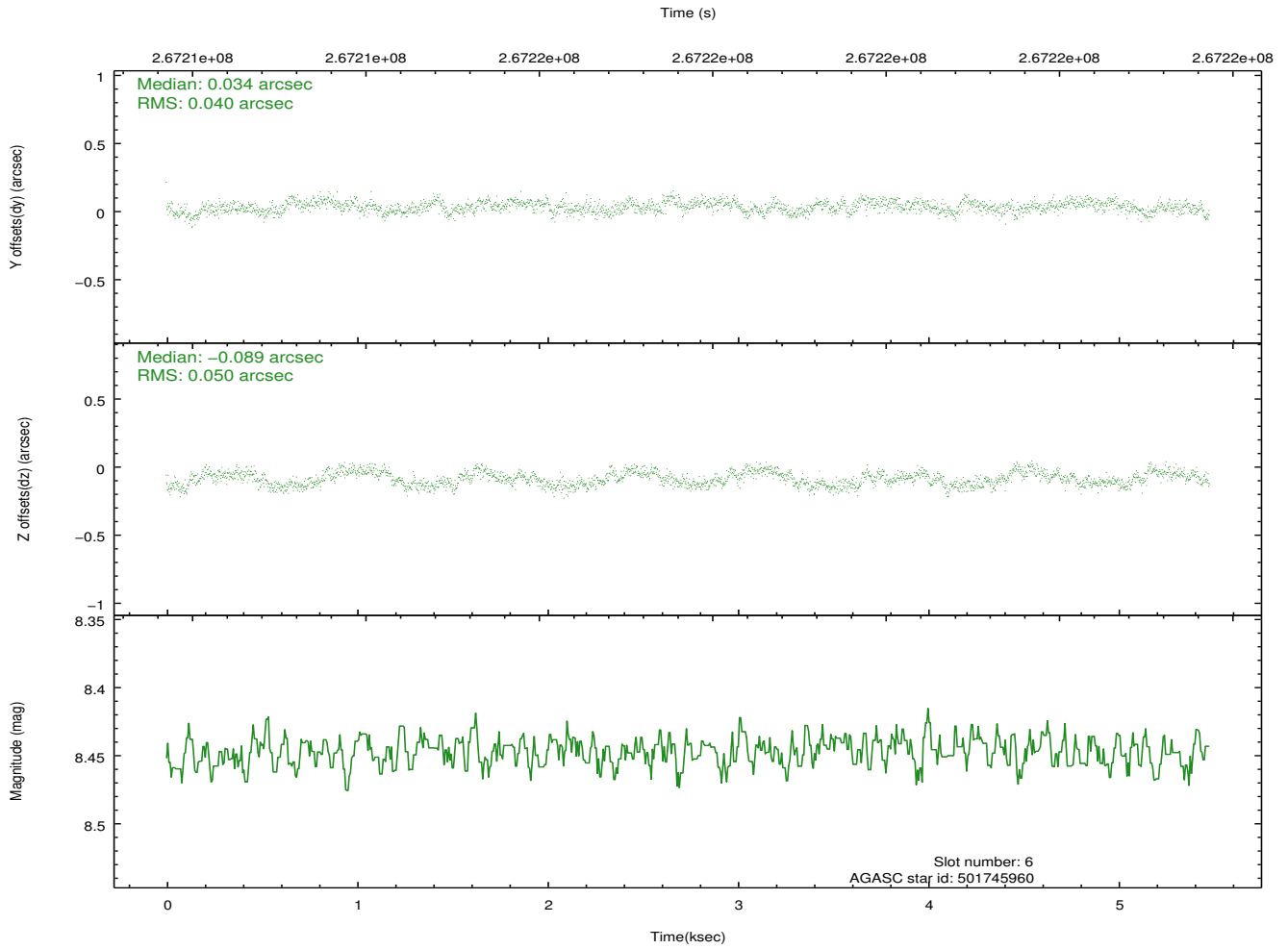
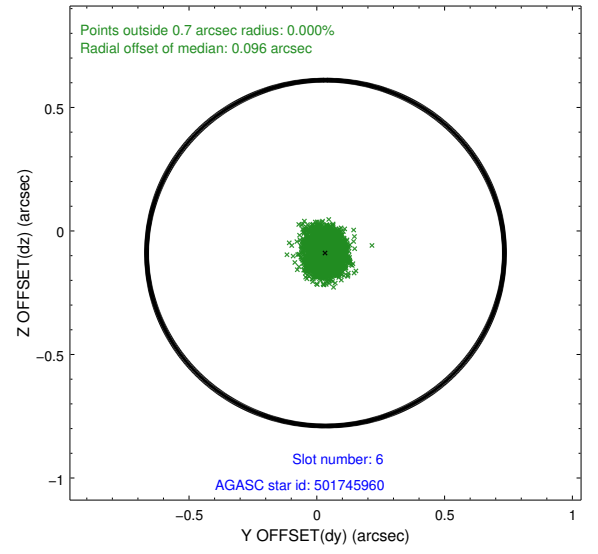
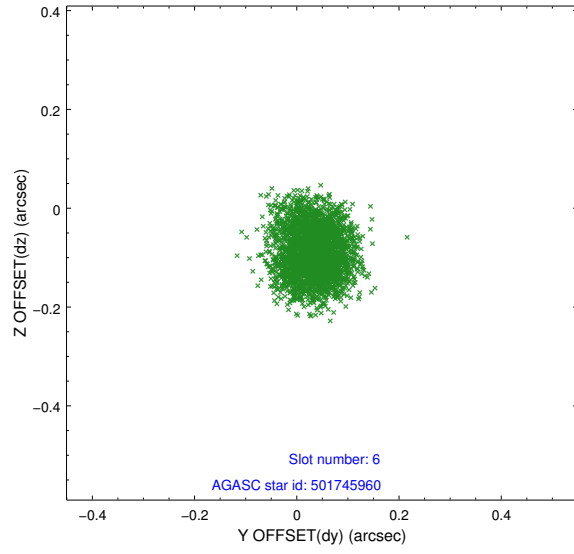
2.4.2 Slot 4



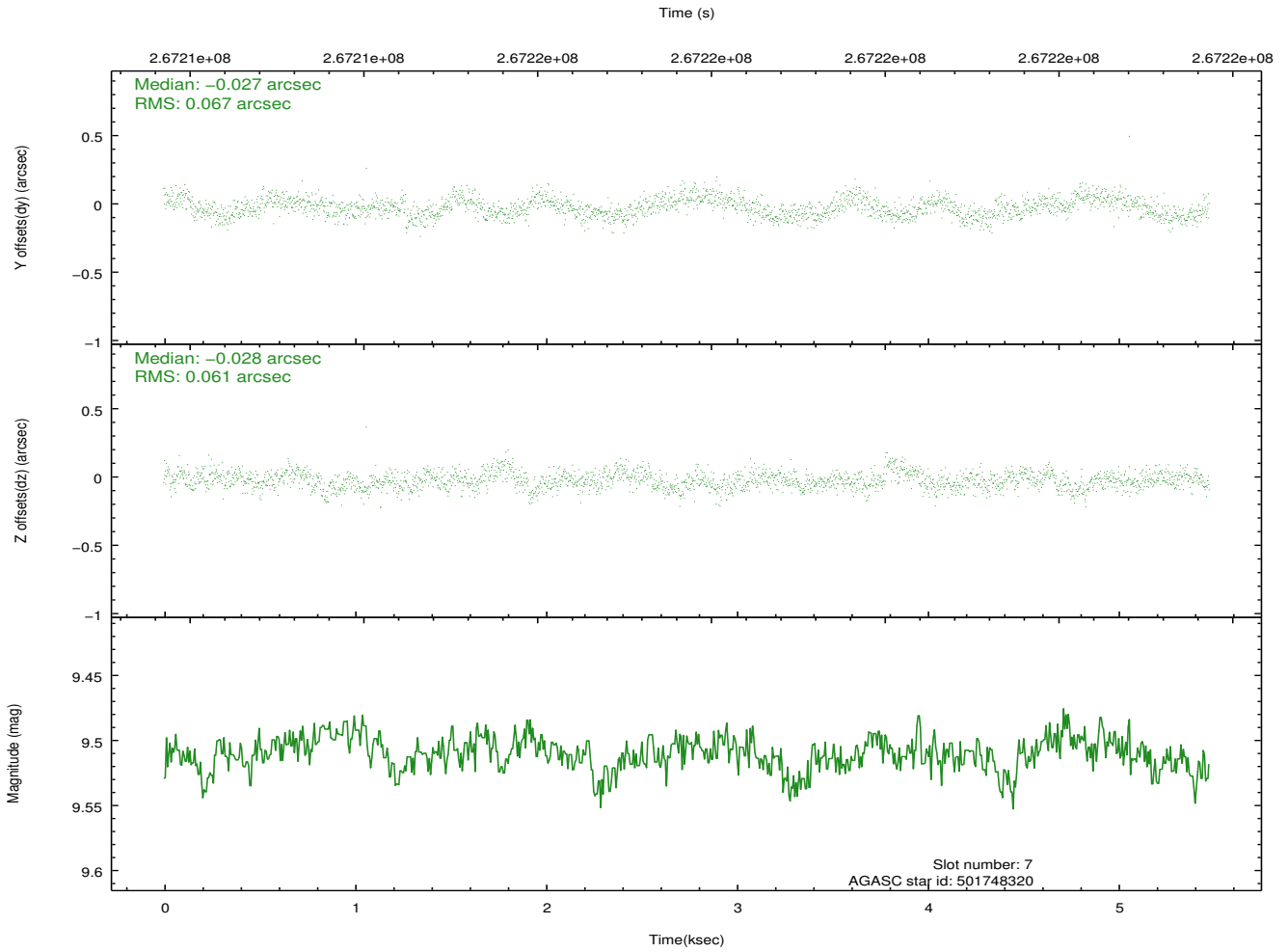
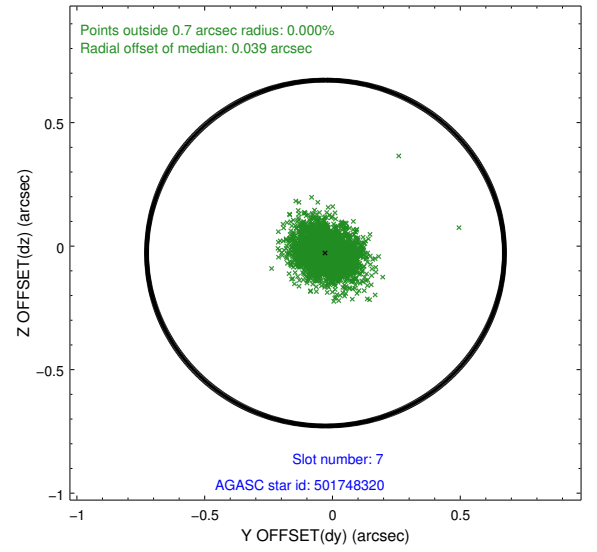
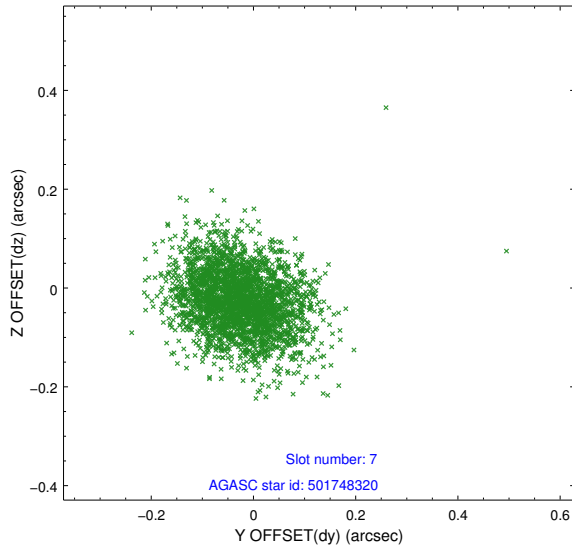
2.4.3 Slot 5



2.4.4 Slot 6

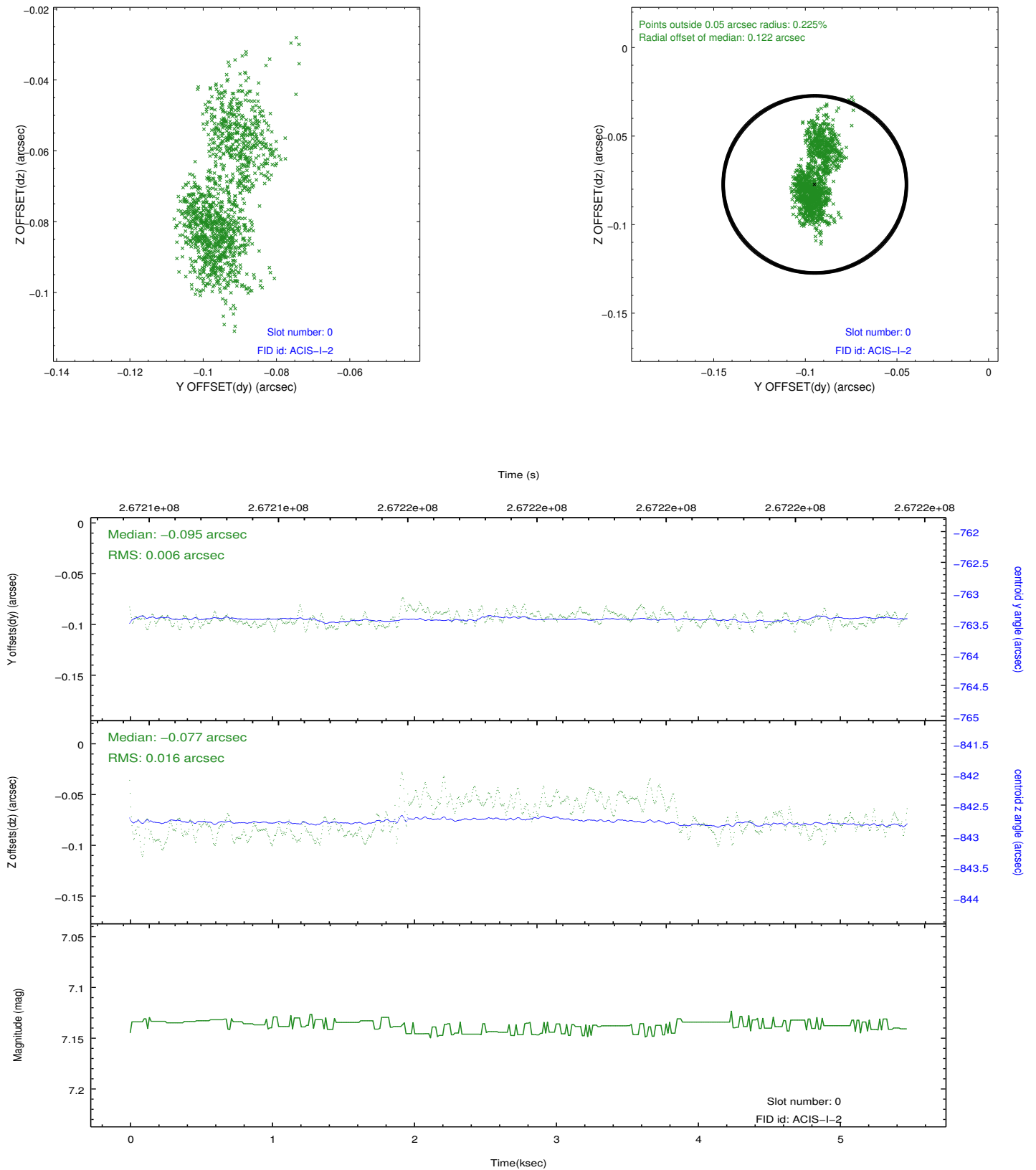


2.4.5 Slot 7

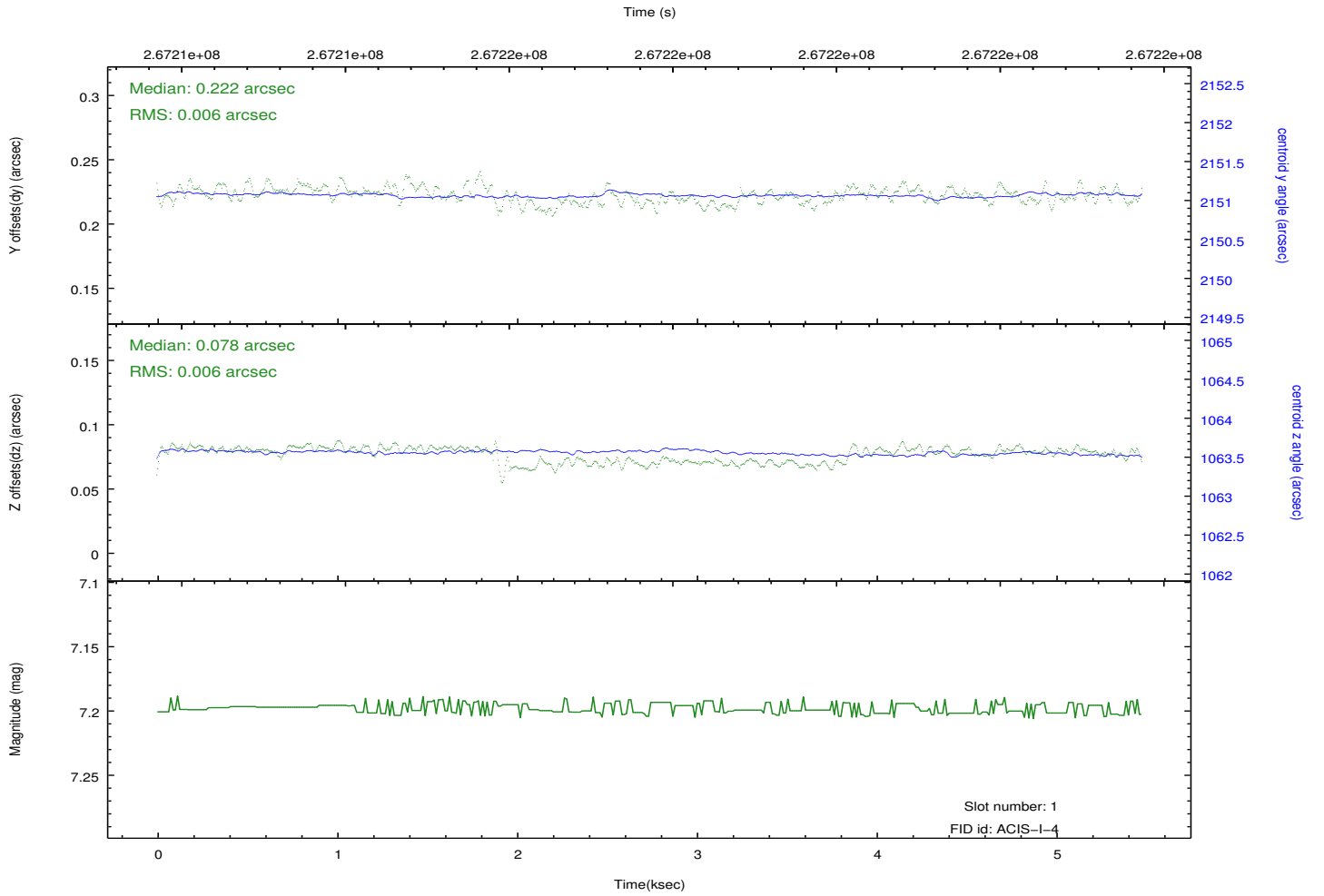
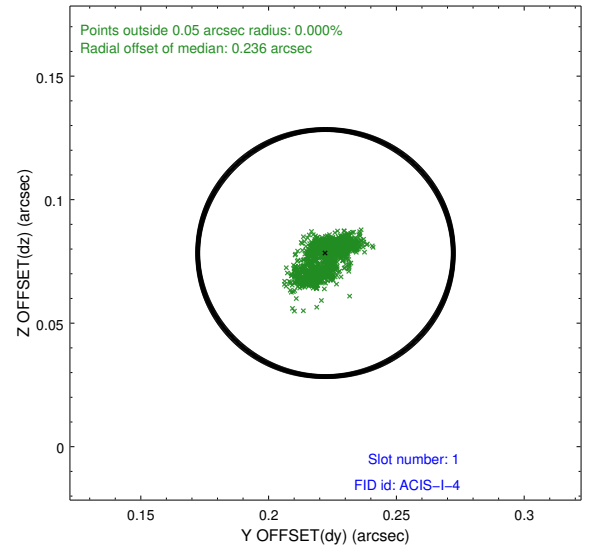
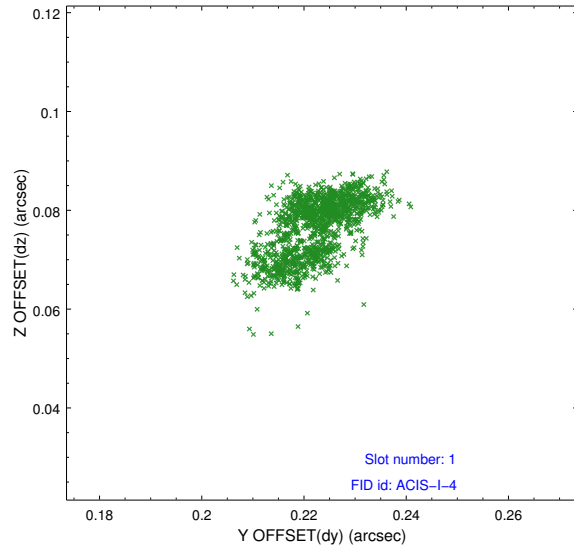


2.5 FID Slots

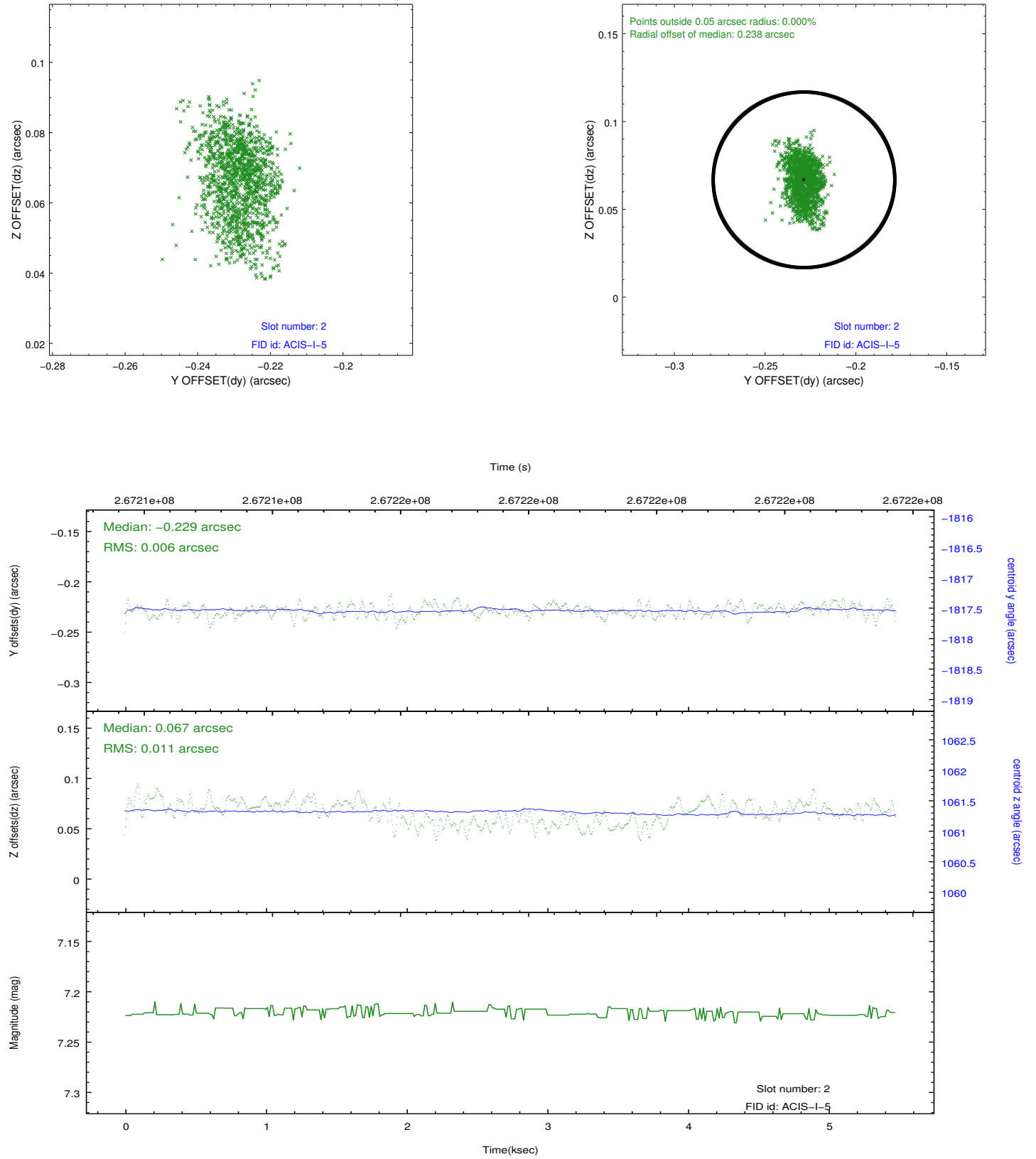
2.5.1 Slot 0



2.5.2 Slot 1



2.5.3 Slot 2



A Summary

A.1 Status

V&V Scientist	Beth Sundheim
V&V Date (YYYY-MM-DD)	2012.04.04
V&V Edition	1
V&V Disposition and Status	OK
V&V Charge Time	5.04369999

A.2 Comments