

V&V Reference Report

L2 ASCDS Version : 7.6.7.1

Observation 6941 - L2 Version 002
Chandra X-Ray Center

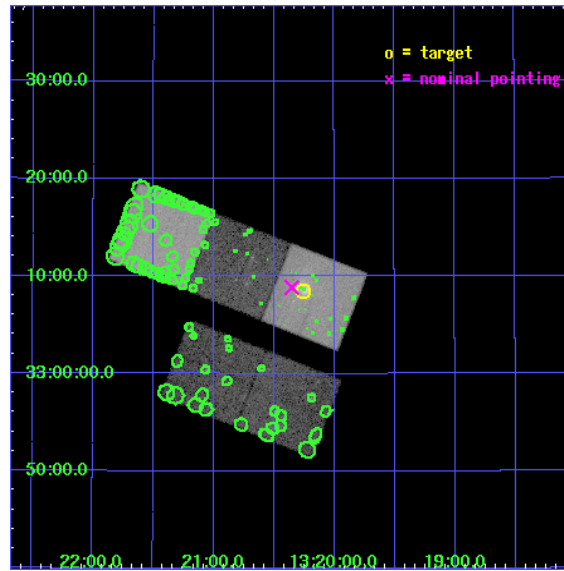
L2 Processing Date : Apr 4 2006

Contents

1	Front	2
2	OBI	3
2.1	OBI	3
2.1.1	Images	3
2.1.2	Bias	3
2.1.3	Parameters	4
2.1.4	Events	4
2.2	Compared Parameters	5
2.3	Aspect	6
2.4	Star Slots	9
2.4.1	Slot 3	9
2.4.2	Slot 4	10
2.4.3	Slot 5	11
2.4.4	Slot 6	12
2.4.5	Slot 7	13
2.5	FID Slots	14
2.5.1	Slot 0	14
2.5.2	Slot 1	15
2.5.3	Slot 2	16
3	Point Sources	17
A	Summary	18
A.1	Status	18
A.2	Comments	18

1 Front

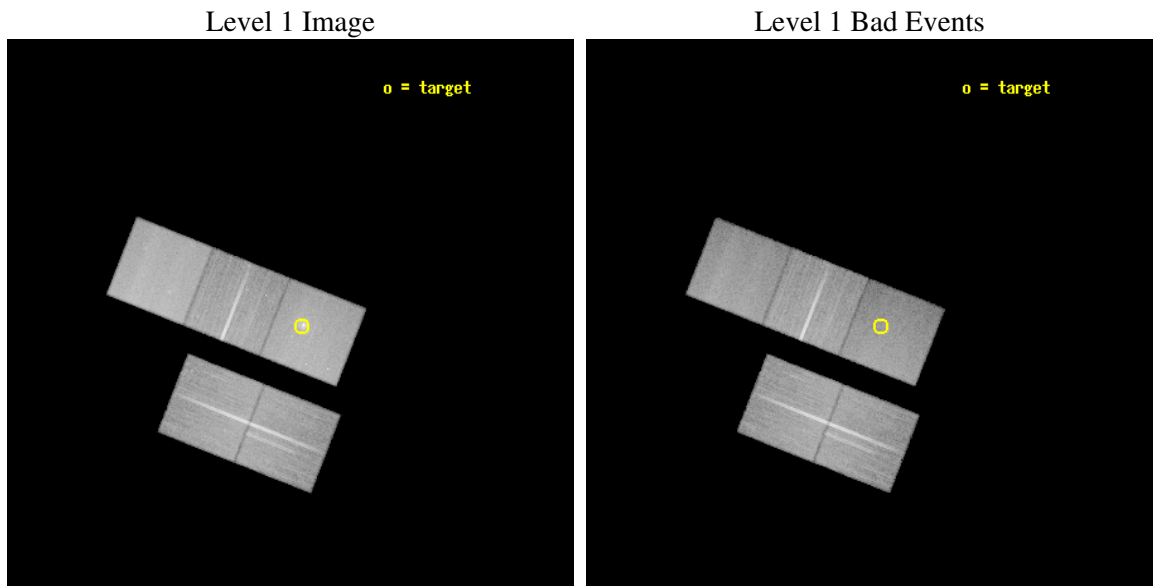
seq_num	800574
obs_id	6941
title	The Cosmological Formation of Galaxy Groups
observer	Prof. David Buote
object	RXC J1320.2+3308
dtcycle	0
cycle	P
ra_targ	200.064167
dec_targ	33.141667
ra_nom	200.08789318816
dec_nom	33.147645597178
roll_nom	21.511250621279
revision	2
ontime	39134.399924755
livetime	38623.080179412
ontime2	39134.399924755
ontime3	39121.836123466
ontime5	39134.399924755
ontime6	39134.399924755
ontime7	39134.399924755
l2events	361622



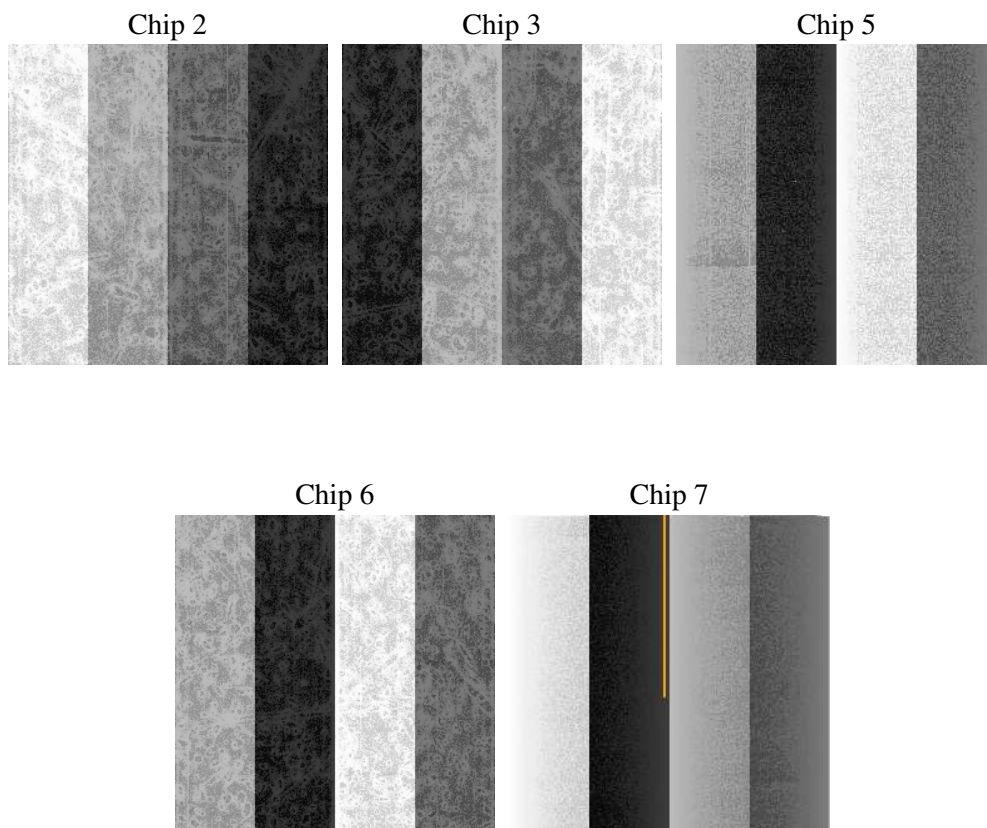
2 OBI

2.1 OBI

2.1.1 Images



2.1.2 Bias



2.1.3 Parameters

obi_num	0
ascdsver	7.6.7.1
caldbver	3.2.1
date	2006-04-04T12:48:26
revision	2

sched_exp_time	39000.000000
ontime	39560.924294561
ontime2	39560.924264669
ontime3	39548.360463381
ontime5	39560.924294561
ontime6	39560.924264669
ontime7	39560.924294561
l1events	1449066

2.1.4 Events

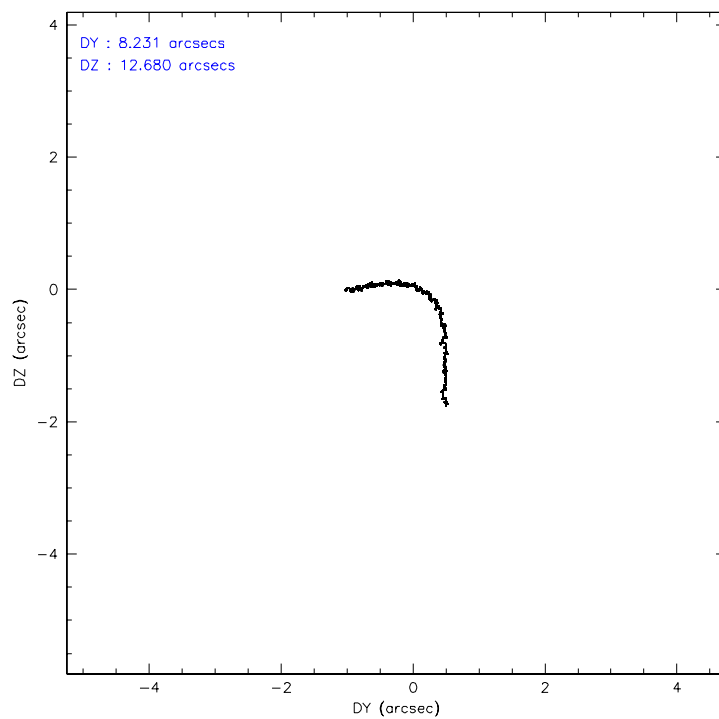
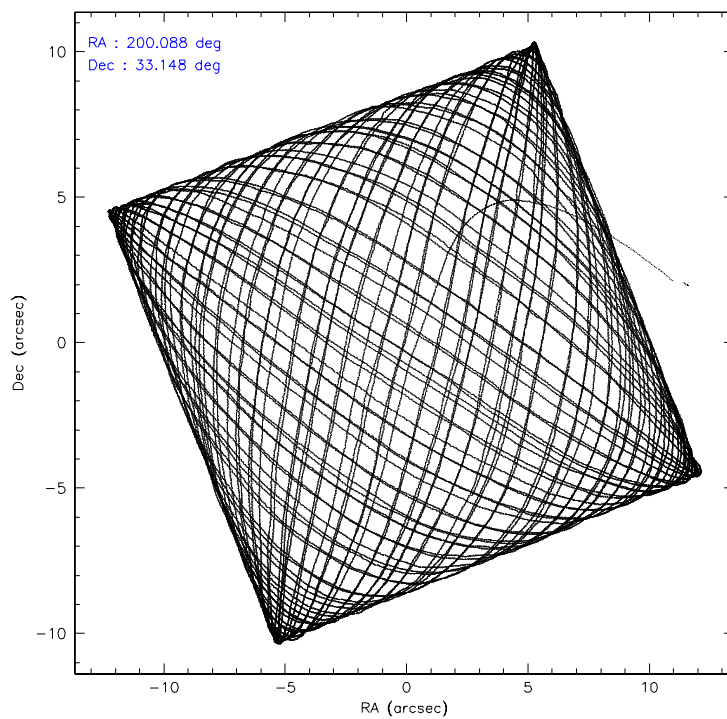
	ccd 2	ccd 3	ccd 5	ccd 6	ccd 7
level 1 events	272089	255061	349052	262840	310024
rejected events	247321	230862	187508	233165	170187
rejected %	90%	90%	53%	88%	54%

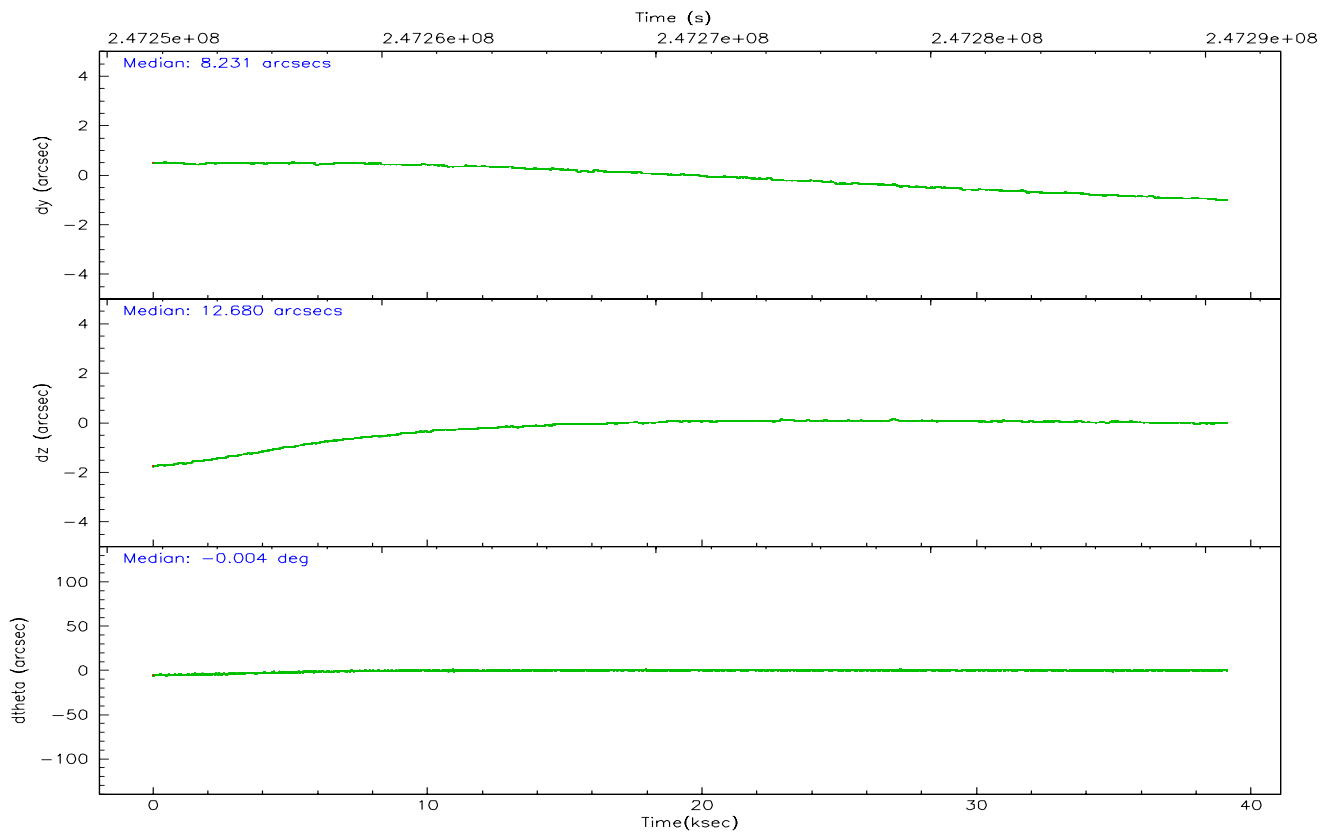
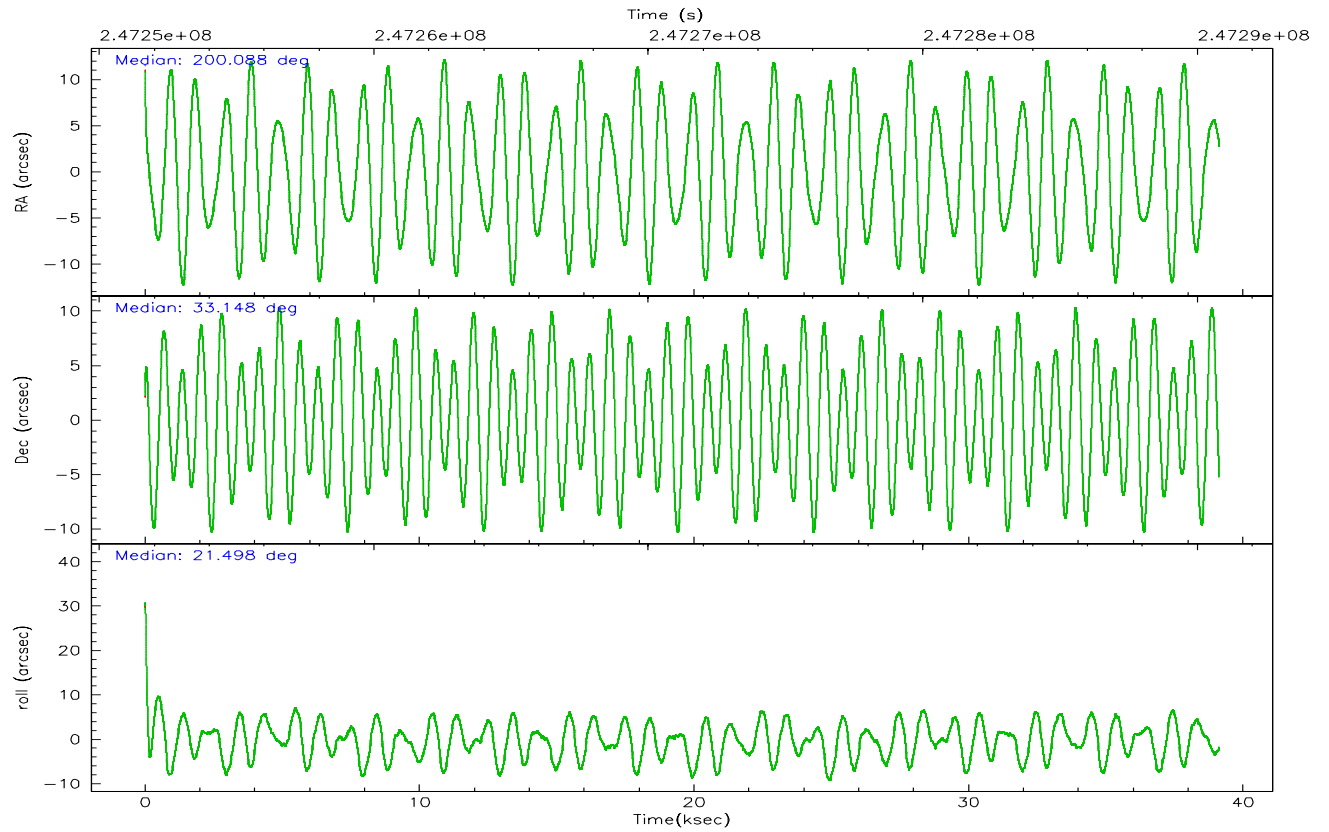
	ccd 2	ccd 3	ccd 5	ccd 6	ccd 7
grade 0 events	8916	8715	6668	11790	13535
	3%	3%	1%	4%	4%
grade 1 events	142	139	123	126	171
	0%	0%	0%	0%	0%
grade 2 events	5930	5178	52052	6152	35473
	2%	2%	14%	2%	11%
grade 3 events	2838	2891	4334	3104	9222
	1%	1%	1%	1%	2%
grade 4 events	2765	2811	4235	3114	8787
	1%	1%	1%	1%	2%
grade 5 events	8173	10150	19145	10540	22167
	3%	3%	5%	4%	7%
grade 6 events	4565	4867	96248	5796	74198
	1%	1%	27%	2%	23%
grade 7 events	238760	220310	166247	222218	146471
	87%	86%	47%	84%	47%

2.2 Compared Parameters

Parameter	Planned	Actual	Parameter	Planned	Actual
Instrument	ACIS	ACIS	Obspar format version number	6	6
Detector	ACIS-23567	ACIS-23567	Obspar file type	PREDICTED	ACTUAL
Grating	NONE	NONE	Obspar update status	NONE	UPDATED
Data mode	VFAINT	VFAINT	On-chip summing requested	N	N
Observation mode	POINTING	POINTING	Subarray requested	NONE	NONE
Pointing RA	200.068019	200.0878931881562	Alternating exposures requested	N	N
Pointing Dec	33.126108	33.14764559717814	Primary exposure time	0.000000	3.1
Pointing Roll	21.365478	21.511250621279			
SIM focus pos (mm)	-0.684267	-0.6828225247311905			
SIM defocus (mm)	0	0.001444936568705701			
SIM translation stage pos (mm)	-190.132523	-190.1400660498719			
SIM translation stage offset (mm)	0	0.00754346686406393			
Observation start time	247251802.184000	247250559.46262			
Observation start date	2005-11-01T17:02:18	2005-11-01T16:42:39			
Observation end time	247290802.184000	247291233.5145			
Observation end date	2005-11-02T03:52:18	2005-11-02T04:00:33			
Read mode	TIMED	TIMED			

2.3 Aspect



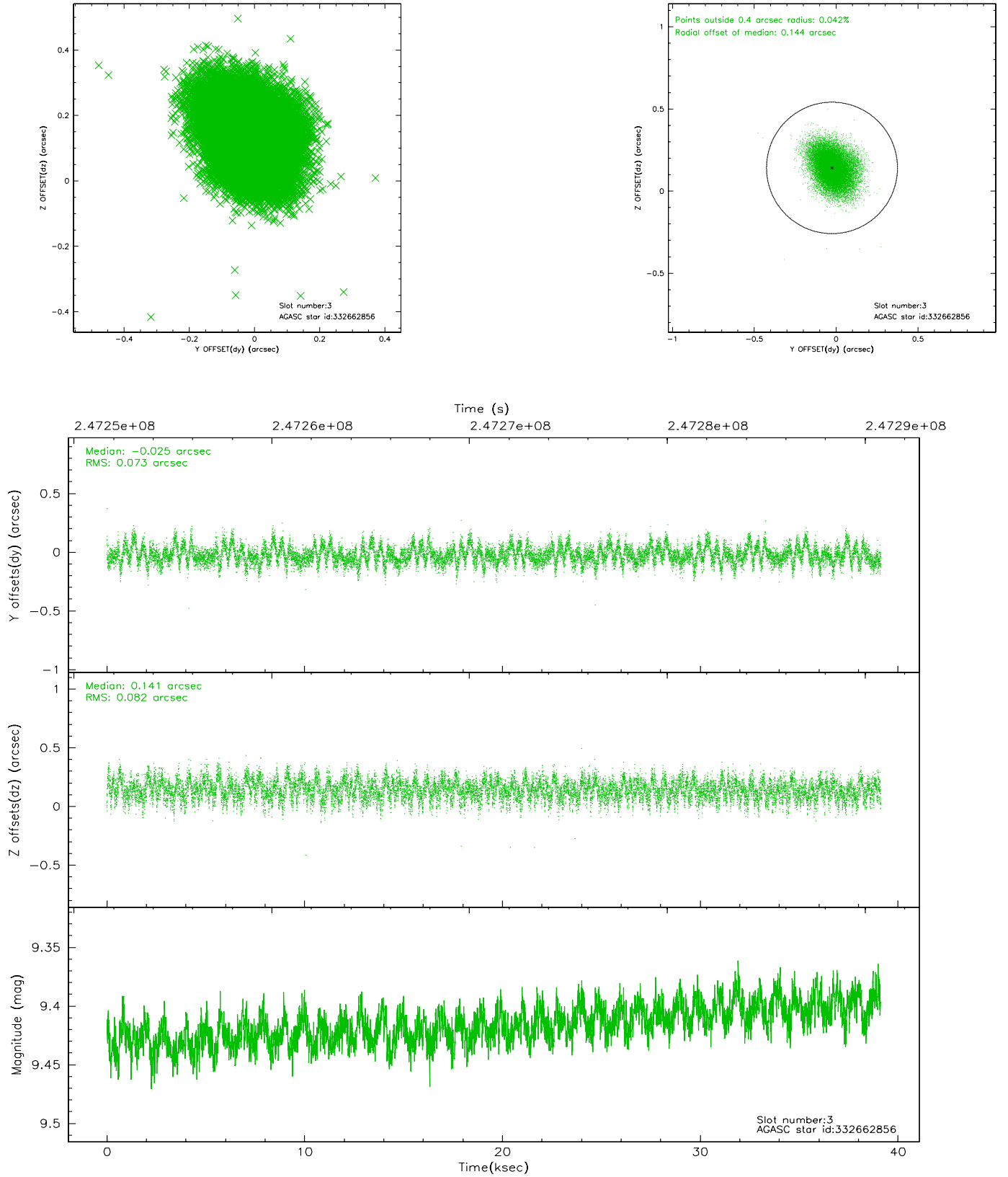


Slot Statistics

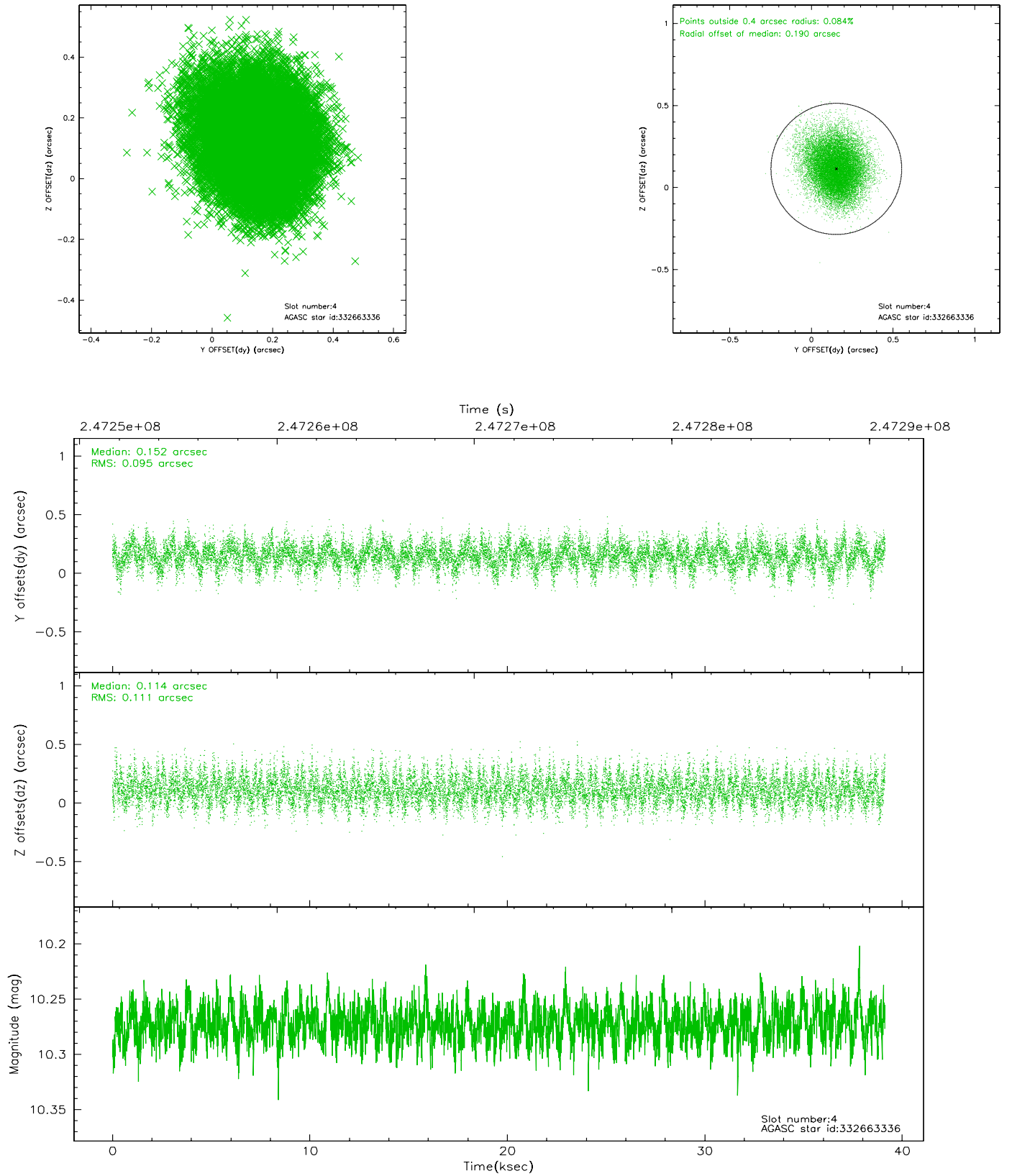
slot	status	id	mag	n_pts	med_dy	med_dz	dr1	dr2	ra	dec	mean_y	mean_z
0	FID	ACIS-S-2	7.10	9547	0.002	-0.015	0.014	0.036	0.000000	0.000000	-760.93	-1733.74
1	FID	ACIS-S-4	7.20	9547	0.060	0.004	0.025	0.039	0.000000	0.000000	2152.40	174.72
2	FID	ACIS-S-5	7.23	9547	-0.094	0.021	0.027	0.038	0.000000	0.000000	-1813.83	168.44
3	GUIDE	332662856	9.42	19073	-0.025	0.141	0.117	0.189	200.000182	32.747147	-687.60	-1195.46
4	GUIDE	332663336	10.27	19065	0.152	0.114	0.155	0.252	200.152981	32.741672	-264.37	-1382.34
5	GUIDE	332666152	7.92	19086	-0.021	-0.077	0.068	0.109	199.716427	33.438695	-572.99	1434.39
6	GUIDE	332666552	9.92	19074	-0.117	-0.211	0.109	0.178	200.269618	33.352698	862.18	539.47
7	GUIDE	332668216	9.85	19063	0.012	0.029	0.123	0.198	200.013897	33.038163	-266.92	-235.07

2.4 Star Slots

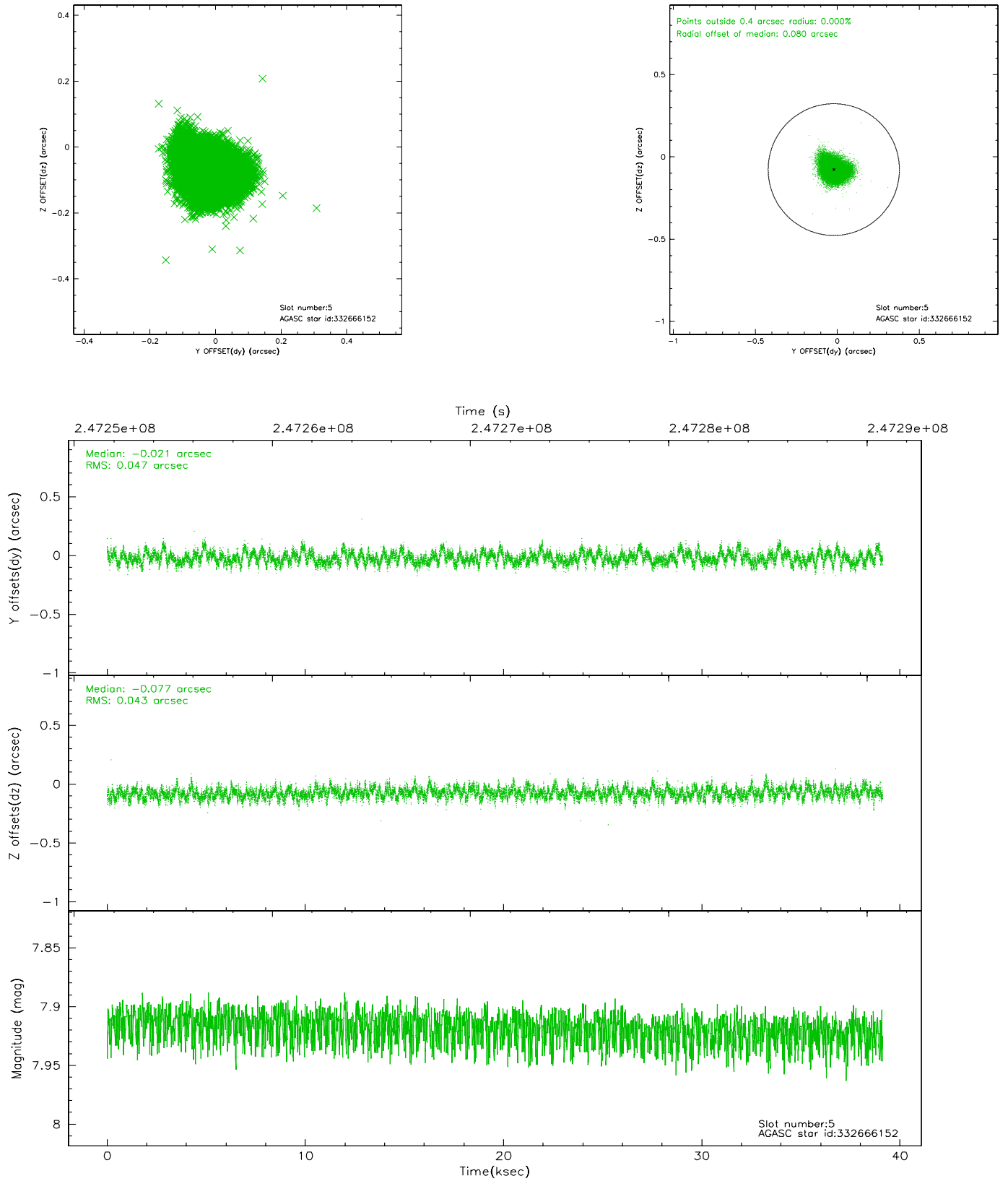
2.4.1 Slot 3



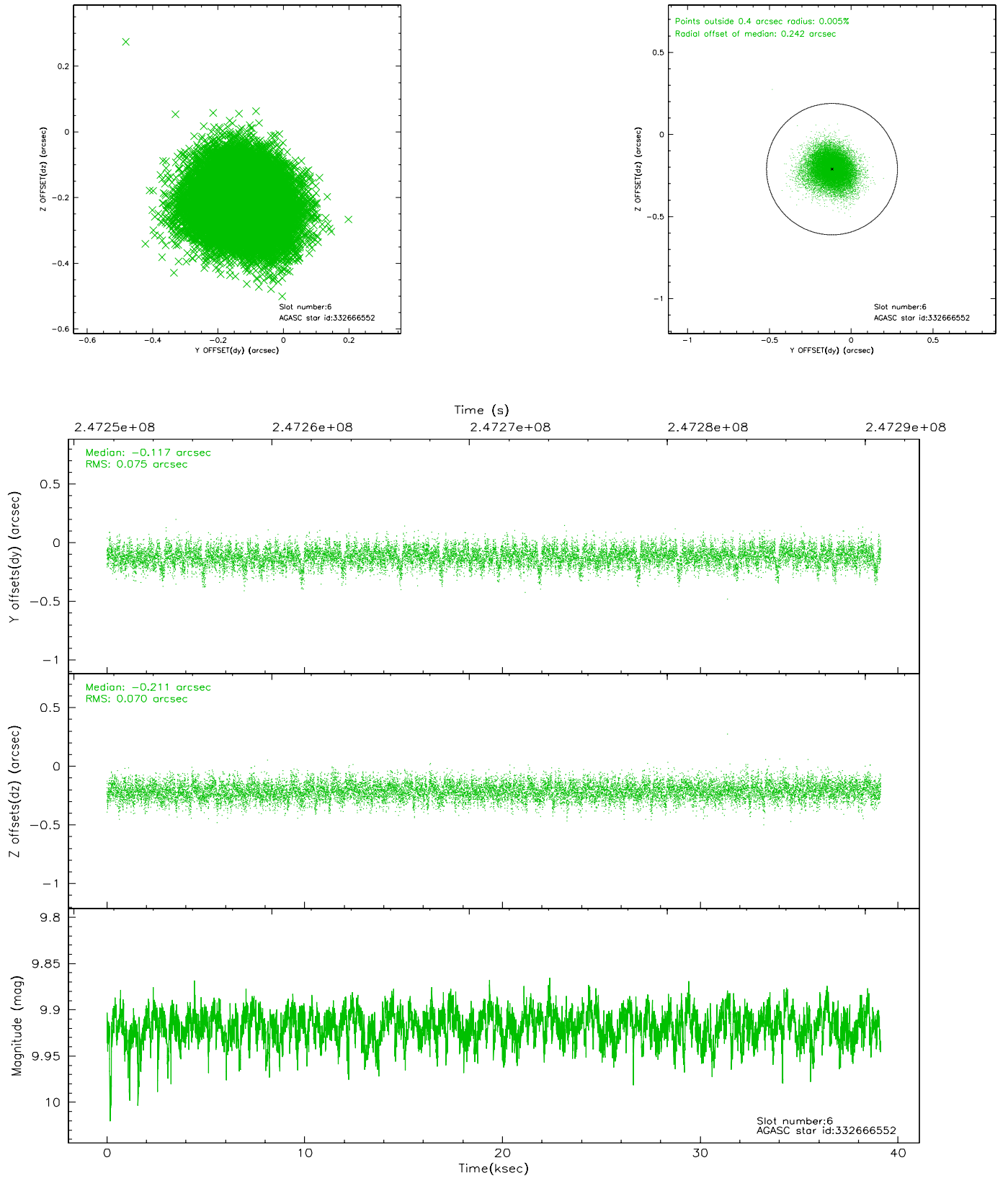
2.4.2 Slot 4



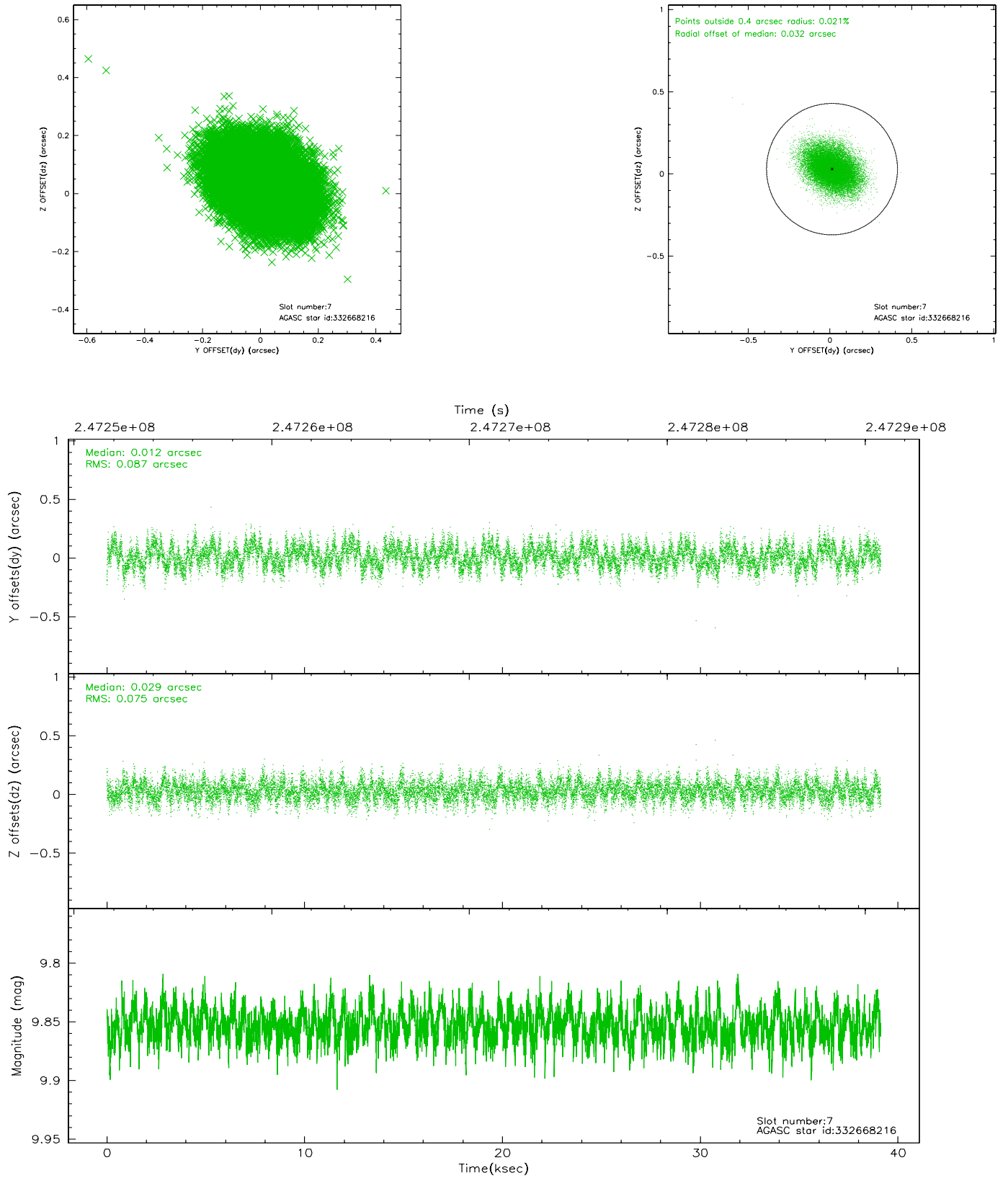
2.4.3 Slot 5



2.4.4 Slot 6

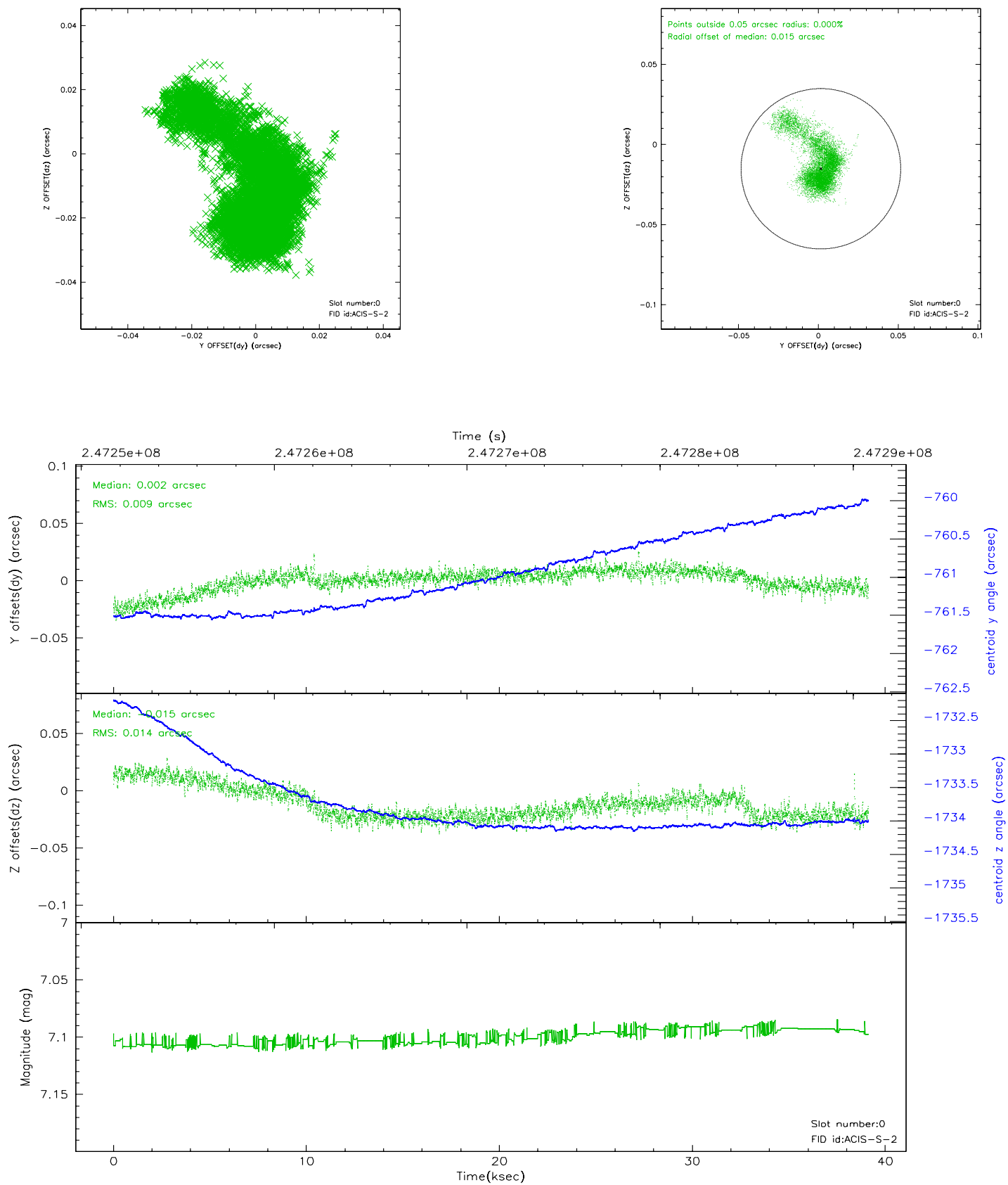


2.4.5 Slot 7

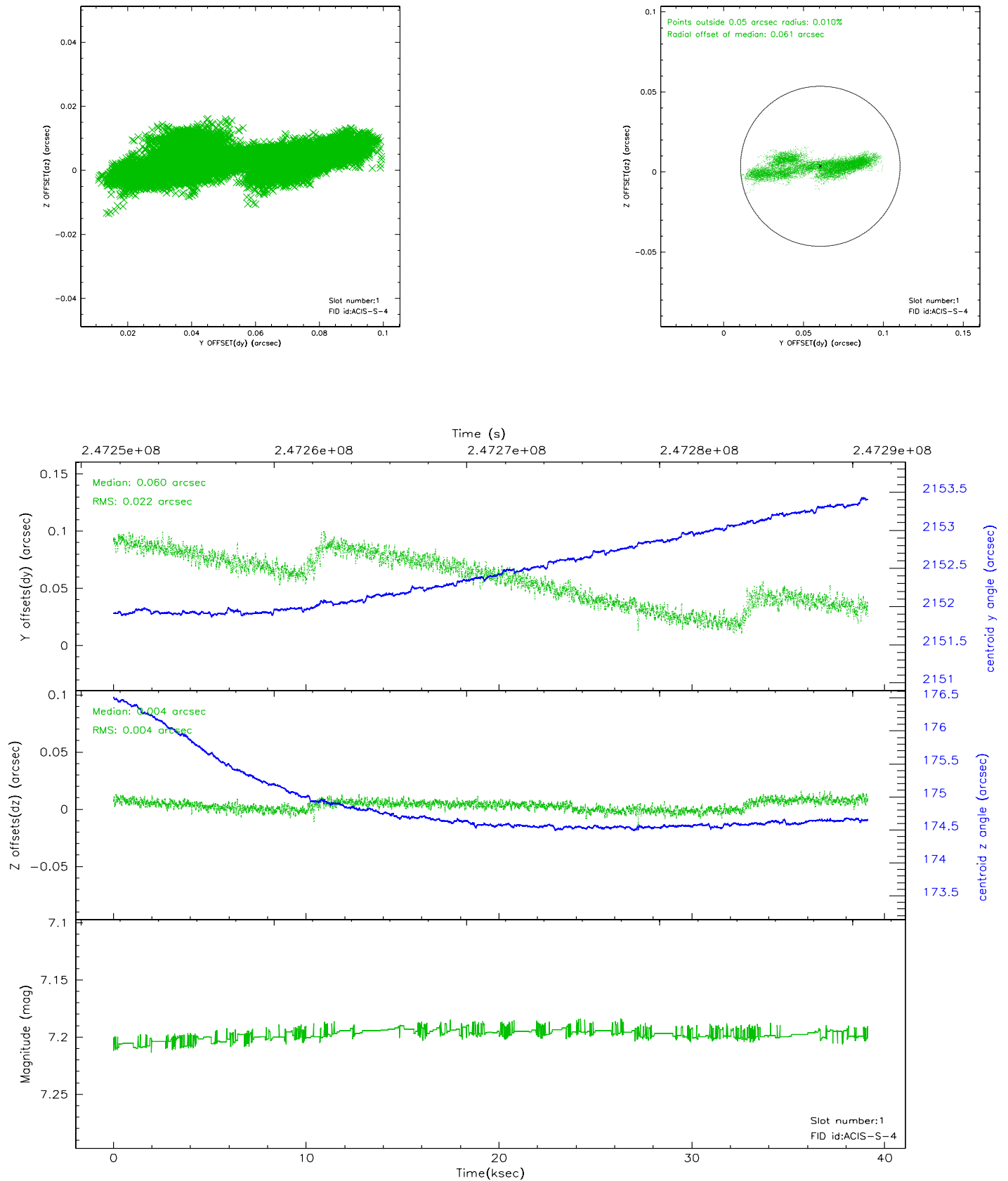


2.5 FID Slots

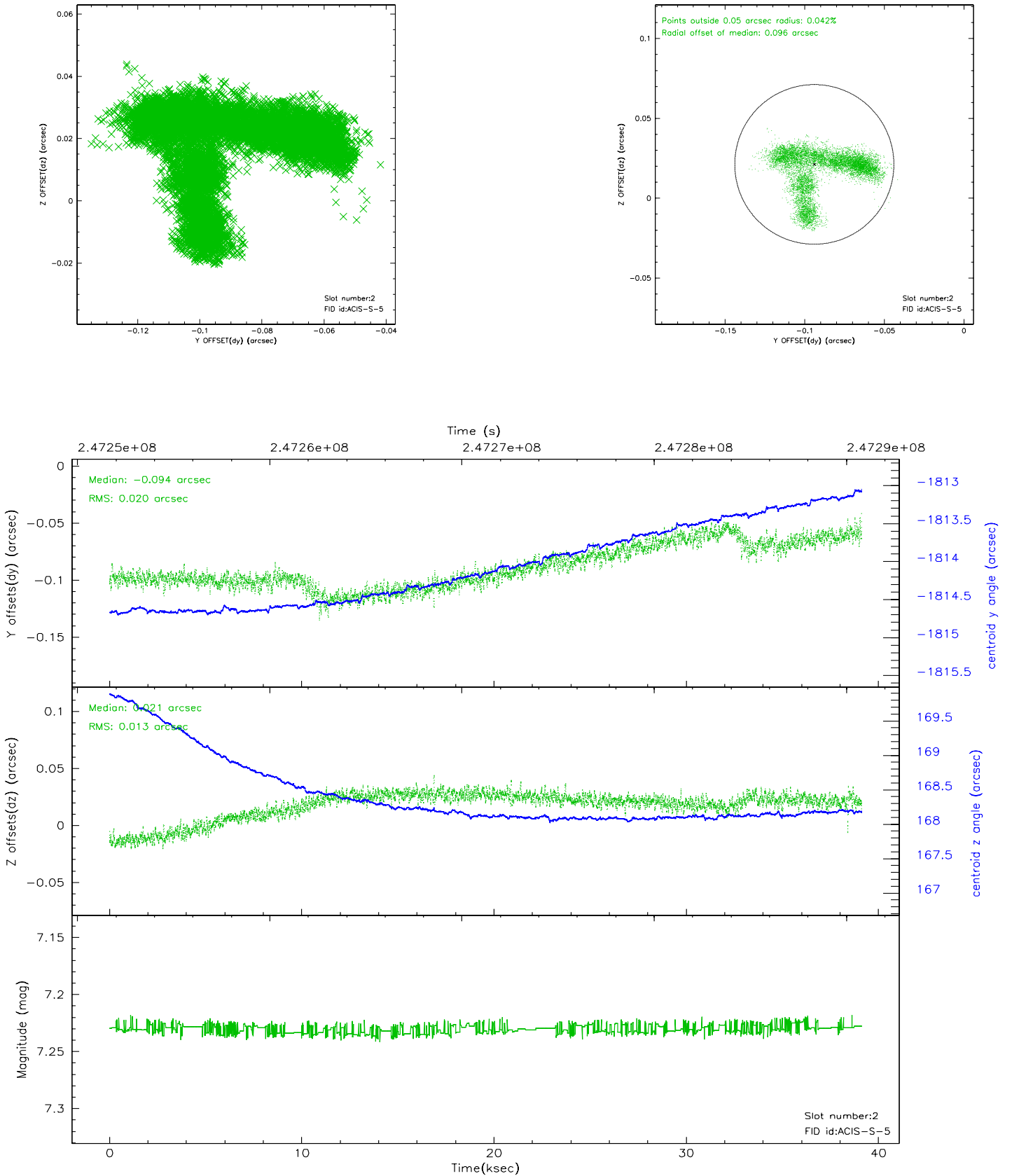
2.5.1 Slot 0



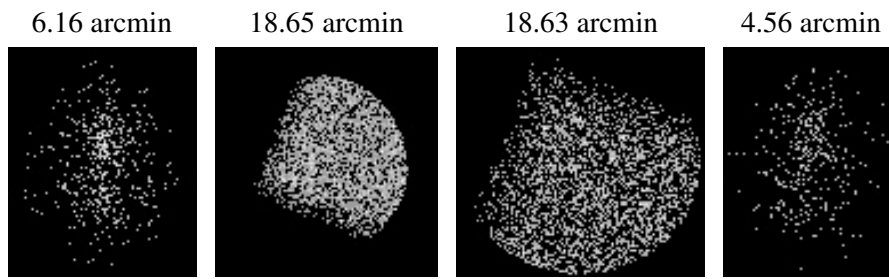
2.5.2 Slot 1



2.5.3 Slot 2



3 Point Sources



A Summary

A.1 Status

V&V Scientist	Beth Sundheim
V&V Date (YYYY-MM-DD)	2006.04.04
V&V Edition	1
V&V Disposition and Status	OK
V&V Charge Time	39.13439

A.2 Comments