

V&V Reference Report

L2 ASCDS Version : 8.4.3.1

Observation 6933 - L2 Version 2
Chandra X-Ray Center

L2 Processing Date : Apr 4 2012

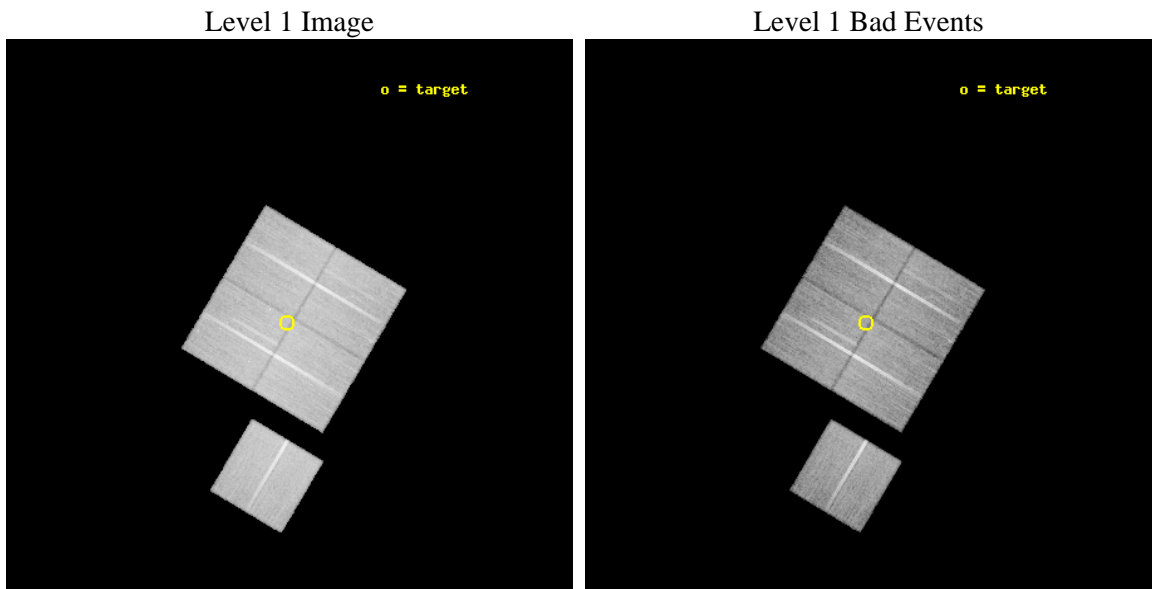
Contents

1	Front	2
2	OBI	3
2.1	OBI	3
2.1.1	Images	3
2.1.2	Bias	3
2.1.3	Parameters	4
2.1.4	Events	4
2.2	Compared Parameters	5
2.3	Aspect	6
2.4	Star Slots	9
2.4.1	Slot 3	9
2.4.2	Slot 4	10
2.4.3	Slot 5	11
2.4.4	Slot 6	12
2.4.5	Slot 7	13
2.5	FID Slots	14
2.5.1	Slot 0	14
2.5.2	Slot 1	15
2.5.3	Slot 2	16
A	Summary	17
A.1	Status	17
A.2	Comments	17

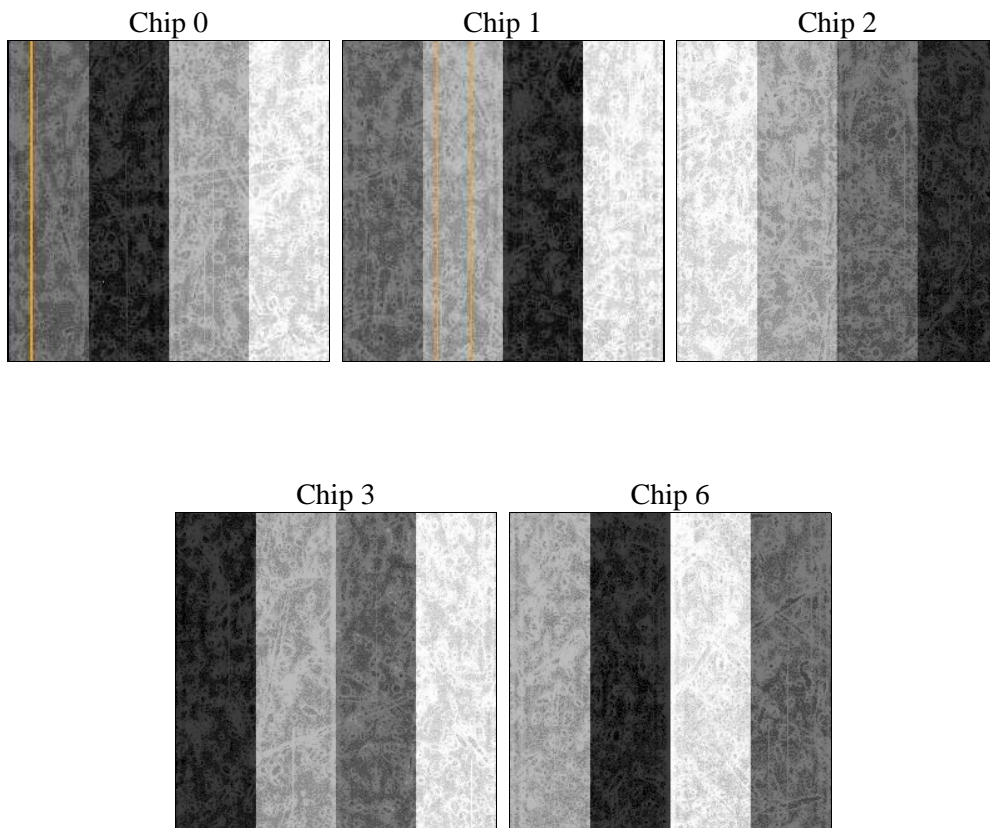
2 OBI

2.1 OBI

2.1.1 Images



2.1.2 Bias



2.1.3 Parameters

obi_num	0	Obi number	sched_exp_time	27000.000000	[s] Scheduled observation exposure time
ascdsver	8.4.3.1	Processing system revision	ontime	27043.373254001	Sum of GTIs [s]
caldsver	4.4.9	 	ontime0	27036.968203366	Sum of GTIs [s]
date	2012-04-04T01:22:24	Date and time of file creation	ontime1	27037.009243369	Sum of GTIs [s]
revision	2	Processing version of data	ontime2	27037.050223649	Sum of GTIs [s]
			ontime3	27043.373254001	Sum of GTIs [s]
			ontime6	27040.068133593	Sum of GTIs [s]
			l1events	1049198	Number of level 1 events

2.1.4 Events

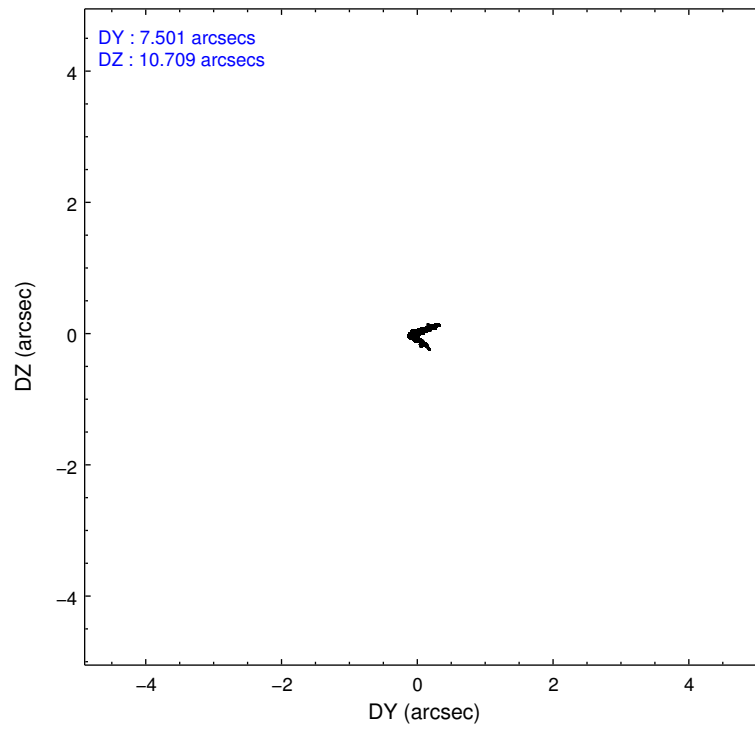
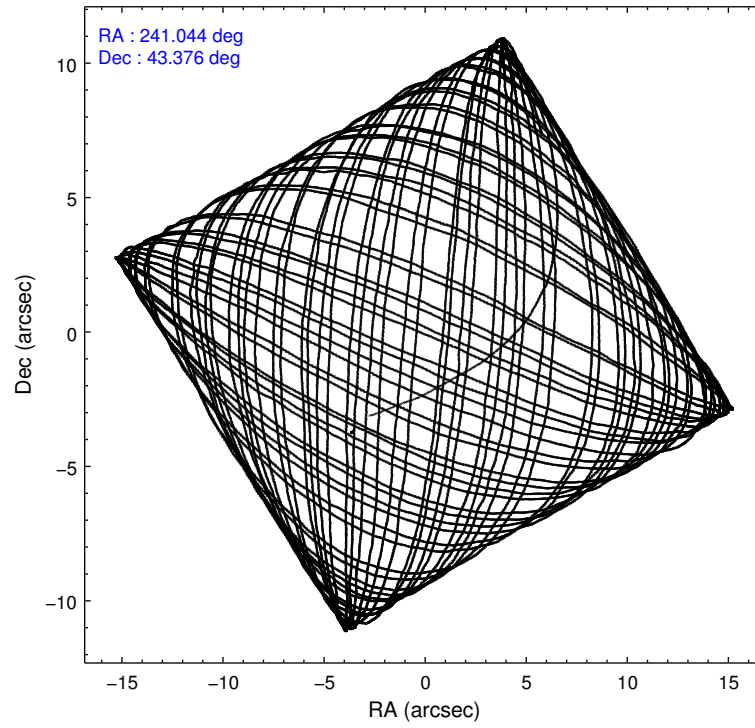
	ccd 0	ccd 1	ccd 2	ccd 3	ccd 6
level 1 events	200793	197614	226010	211759	213022
rejected events	180943	174855	206304	192300	192628
rejected %	90%	88%	91%	90%	90%

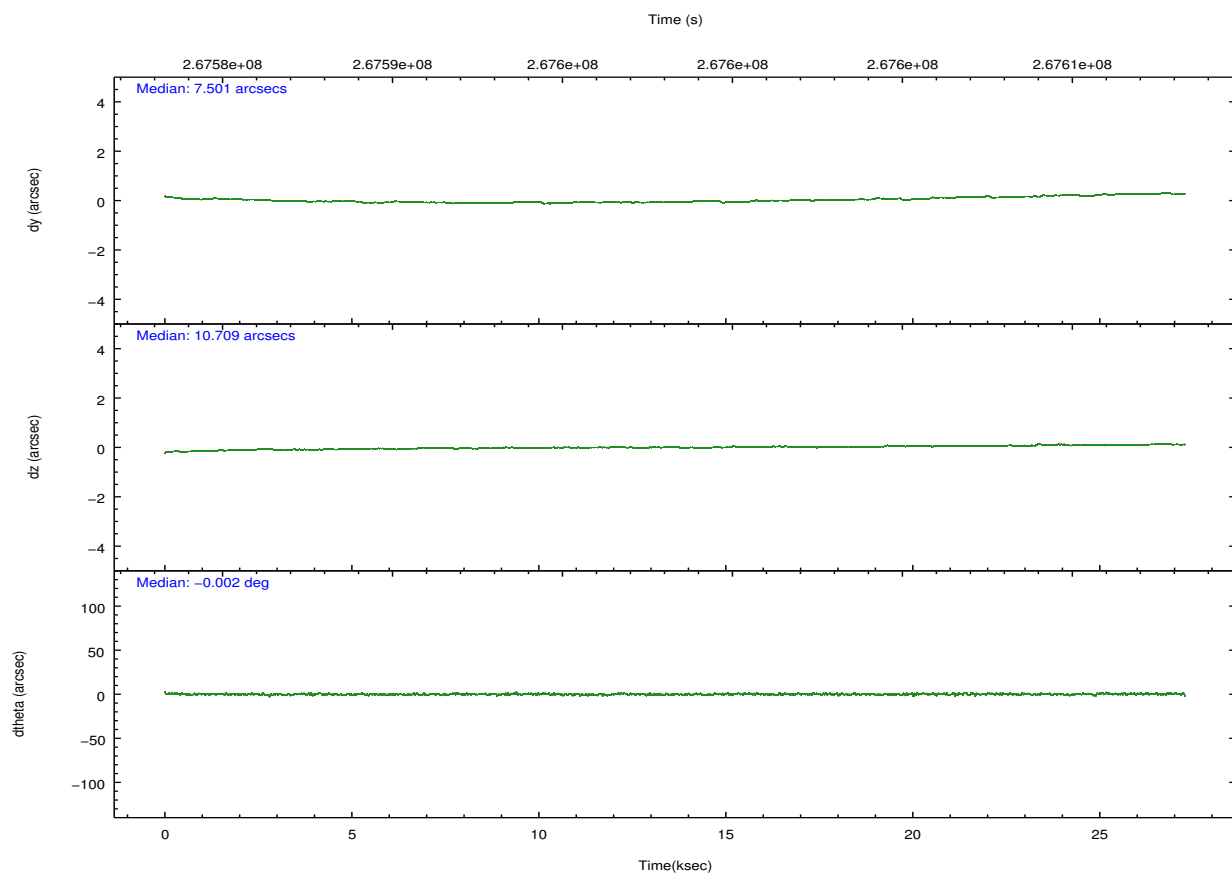
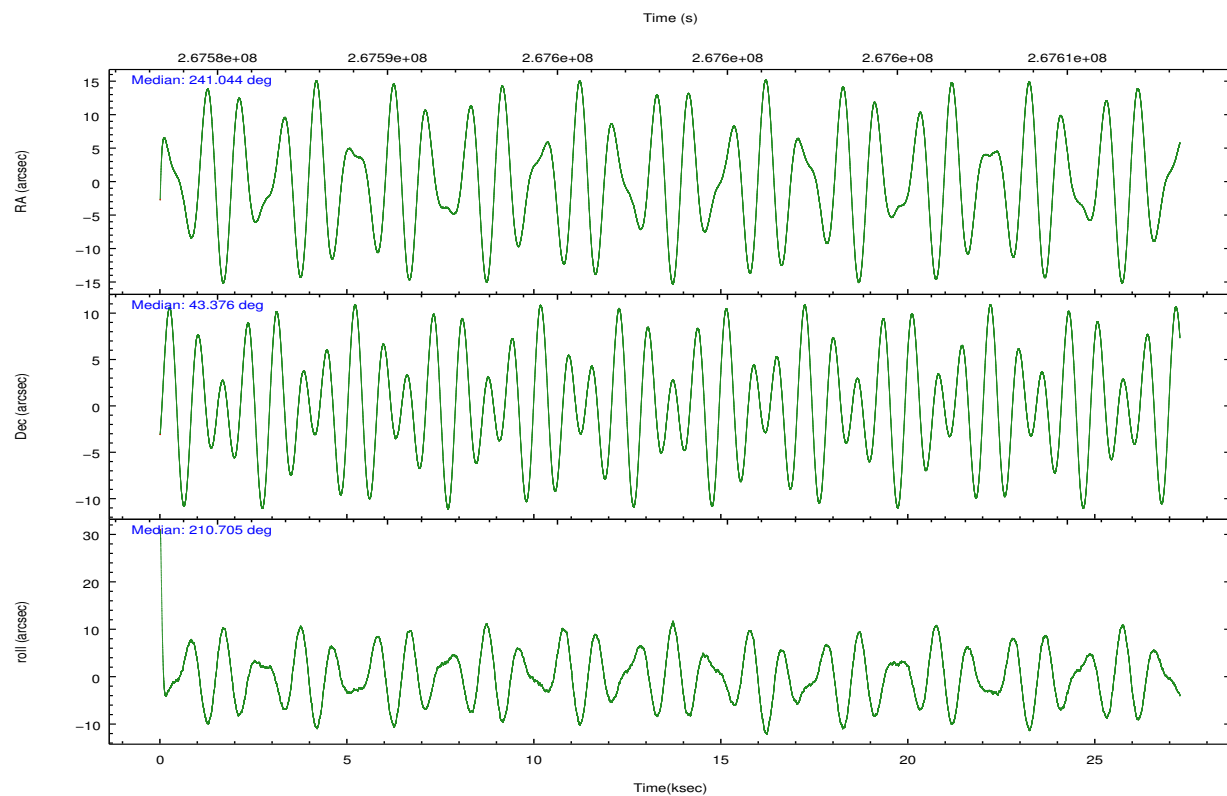
	ccd 0	ccd 1	ccd 2	ccd 3	ccd 6
grade 0 events	6744	7901	7096	7180	7116
	3%	3%	3%	3%	3%
grade 1 events	119	85	108	112	88
	0%	0%	0%	0%	0%
grade 2 events	4799	5219	4575	3983	4413
	2%	2%	2%	1%	2%
grade 3 events	2324	2485	2187	2245	2270
	1%	1%	0%	1%	1%
grade 4 events	2121	2441	2238	2130	2315
	1%	1%	0%	1%	1%
grade 5 events	6937	7717	6526	8132	7939
	3%	3%	2%	3%	3%
grade 6 events	3867	4713	3619	3924	4281
	1%	2%	1%	1%	2%
grade 7 events	173882	167053	199661	184053	184600
	86%	84%	88%	86%	86%

2.2 Compared Parameters

Parameter	Planned	Actual	Parameter	Planned	Actual
Instrument	ACIS	ACIS	Obspar format version number	7	7
Detector	ACIS-01236	ACIS-01236	Obspar file type	PREDICTED	ACTUAL
Grating	NONE	NONE	Obspar update status	NONE	UPDATED
Data mode	VFAINT	VFAINT	Number of optional ACIS chips dropped	0	0
Observation mode	POINTING	POINTING	On-chip summing requested	N	N
[deg] Pointing RA	241.061988	241.0436689516831	Subarray requested	NONE	NONE
[deg] Pointing Dec	43.399819	43.37588614785402	Alternating exposures requested	N	N
[deg] Pointing Roll	210.491762	210.7130467879758	[s] Primary exposure time	0.000000	3.1
[mm] SIM focus pos	-0.782348	-0.7809083437167272			
[mm] SIM defocus	0	0.001439871863259334			
[mm] SIM translation stage pos	-233.592463	-233.5874344608287			
[mm] SIM translation stage offset	0	-0.005018542100998502			
[s] Observation start time (MET)	267584949.184000	267583978.94493			
Observation start date	2006-06-25T01:08:04	2006-06-25T00:52:58			
[s] Observation end time (MET)	267611949.184000	267612721.99627			
Observation end date	2006-06-25T08:38:04	2006-06-25T08:52:01			
Read mode	TIMED	TIMED			

2.3 Aspect



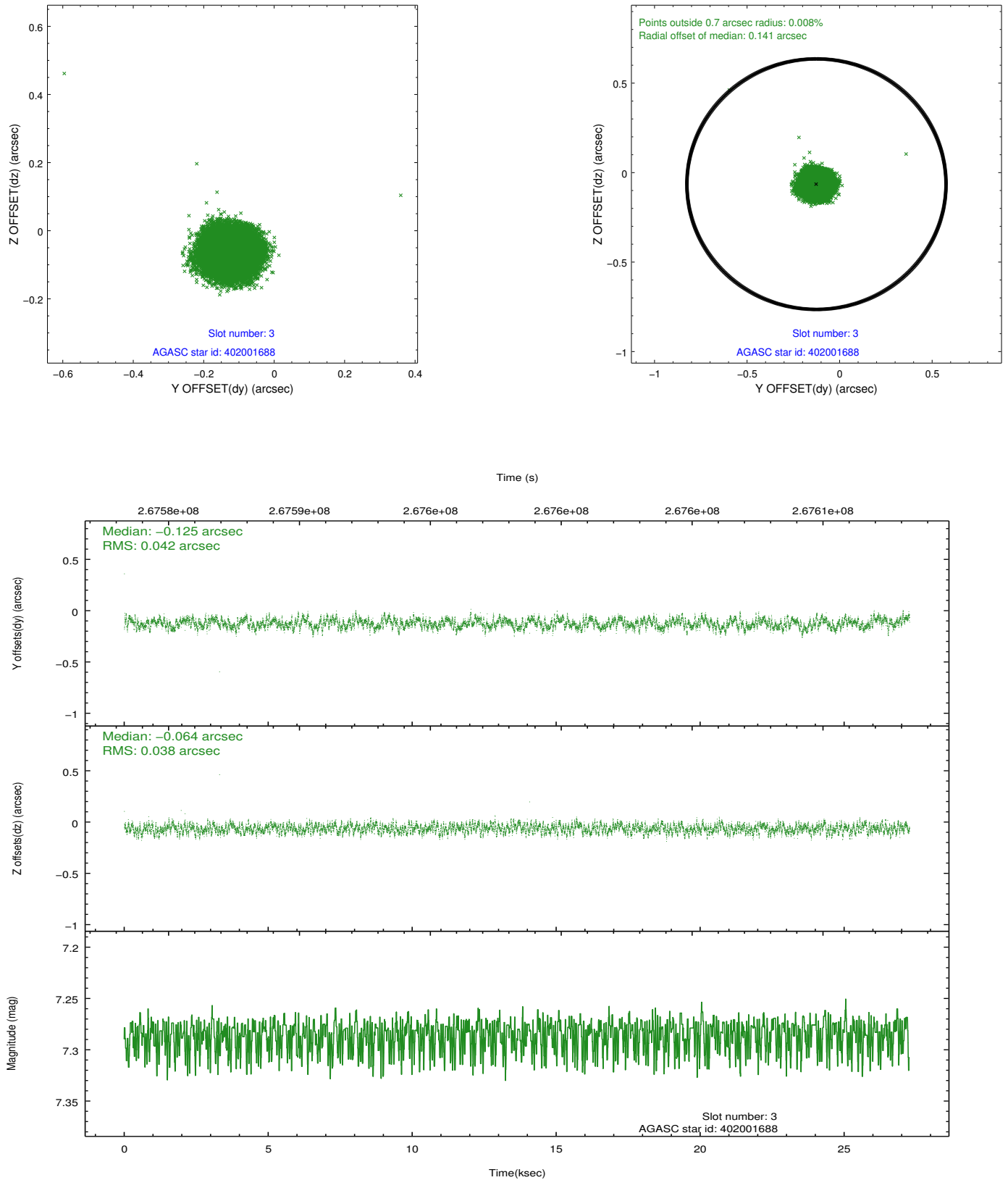


Slot Statistics

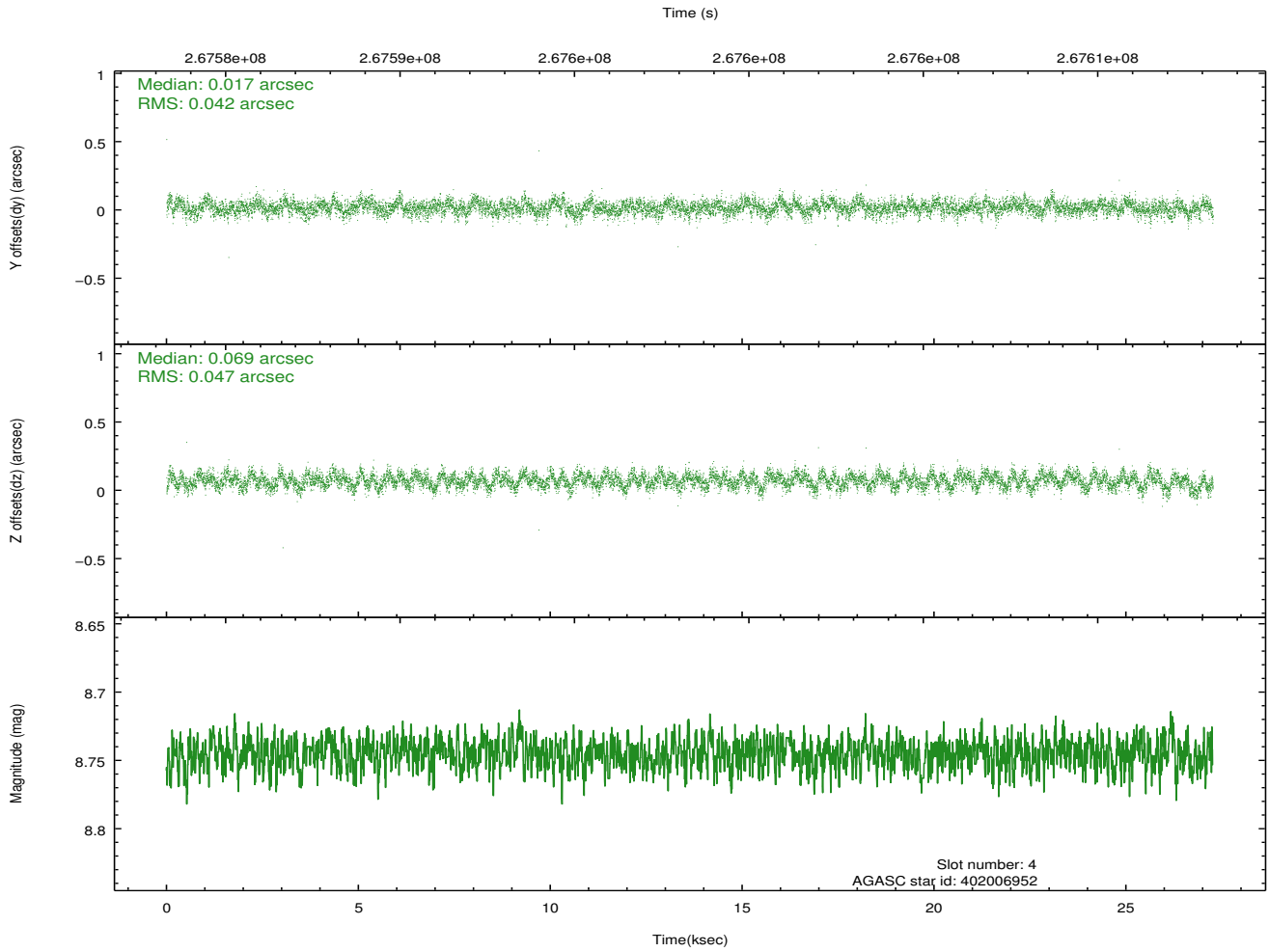
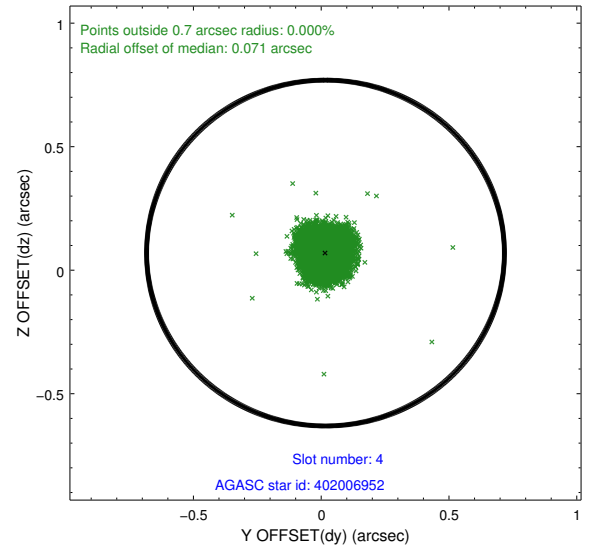
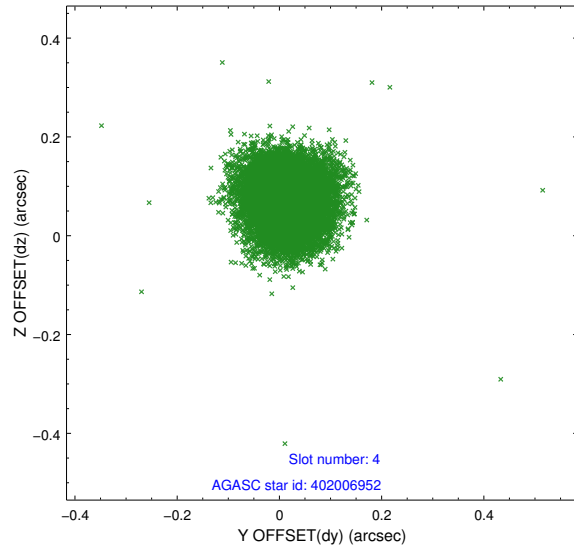
slot	status	id	mag	n_pts	med_dy	med_dz	dr1	dr2	ra	dec	mean_y	mean_z
0	FID	ACIS-I-2	7.15	6651	-0.076	-0.085	0.011	0.020	0.000000	0.000000	-762.12	-840.64
1	FID	ACIS-I-4	7.18	6651	0.185	0.071	0.009	0.017	0.000000	0.000000	2152.17	1065.62
2	FID	ACIS-I-5	7.23	6652	-0.210	0.083	0.012	0.019	0.000000	0.000000	-1815.94	1063.62
3	GUIDE	402001688	7.28	13300	-0.125	-0.064	0.062	0.092	241.364067	43.719053	-1260.75	-592.71
4	GUIDE	402006952	8.75	13298	0.017	0.069	0.067	0.107	240.778900	42.616928	2075.83	2047.55
5	GUIDE	402007168	8.26	13301	0.031	-0.012	0.063	0.103	240.453077	43.473225	1234.59	-1039.29
6	GUIDE	402008032	9.14	13239	0.101	-0.039	0.092	0.145	240.713470	43.039771	1447.52	650.06
7	GUIDE	402009136	9.12	13221	-0.023	0.048	0.088	0.141	240.344834	43.795711	879.35	-2180.25

2.4 Star Slots

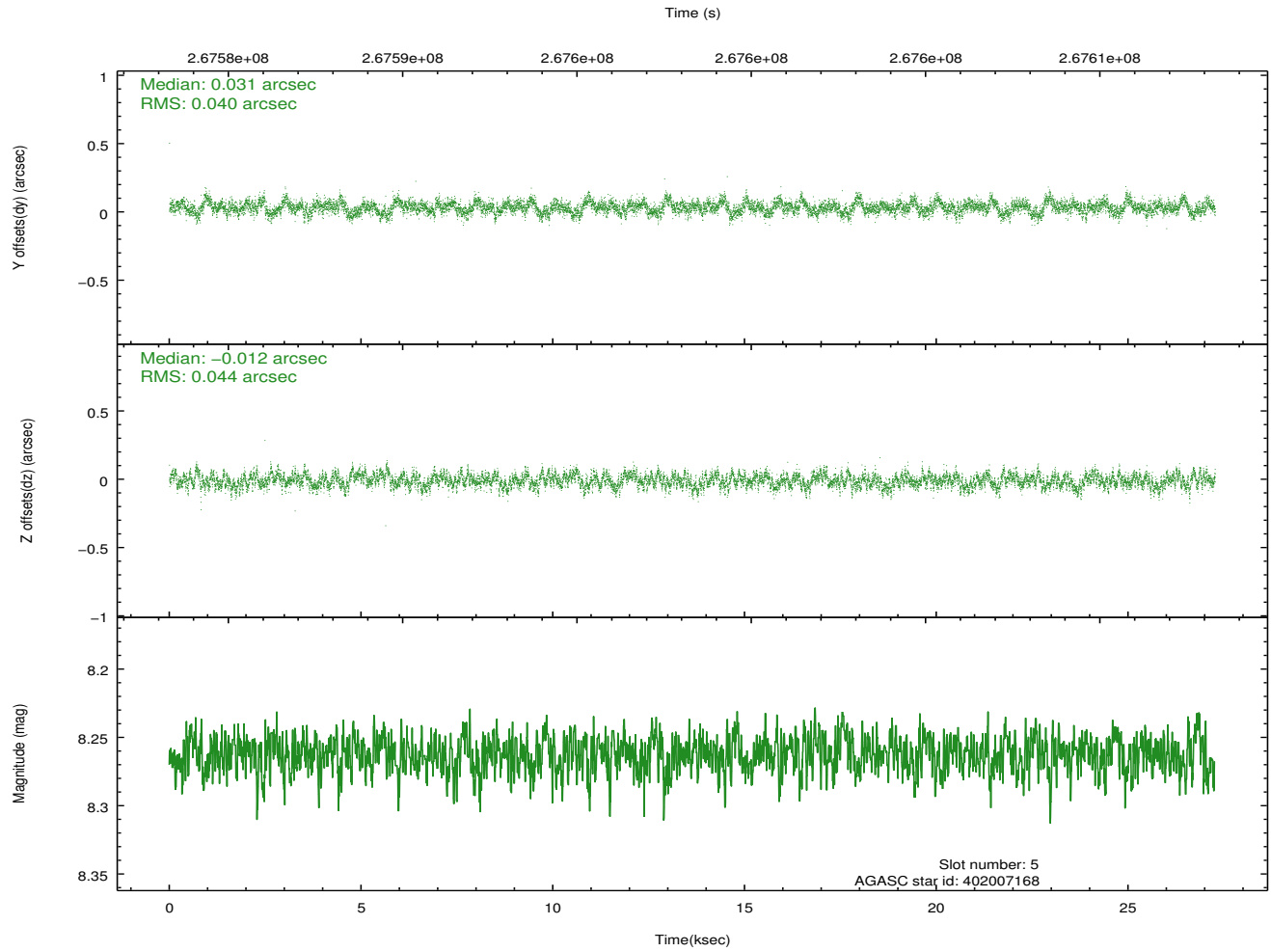
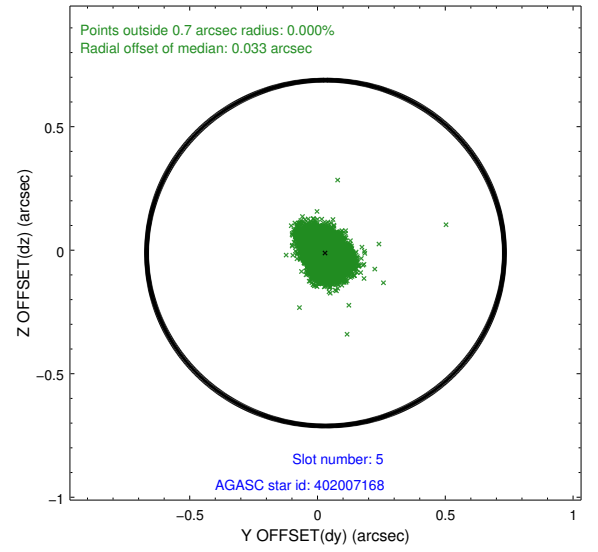
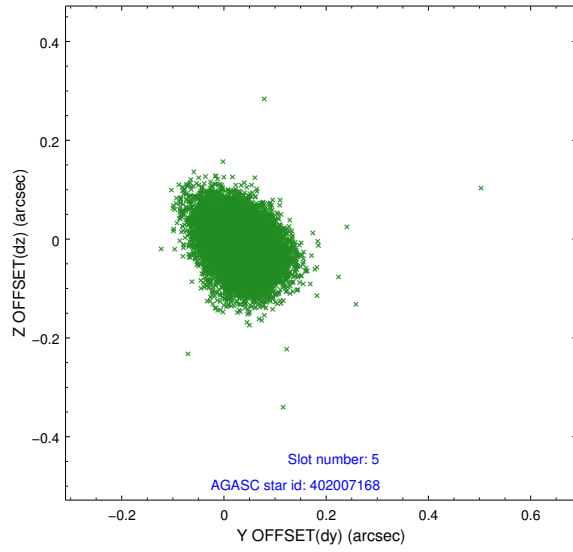
2.4.1 Slot 3



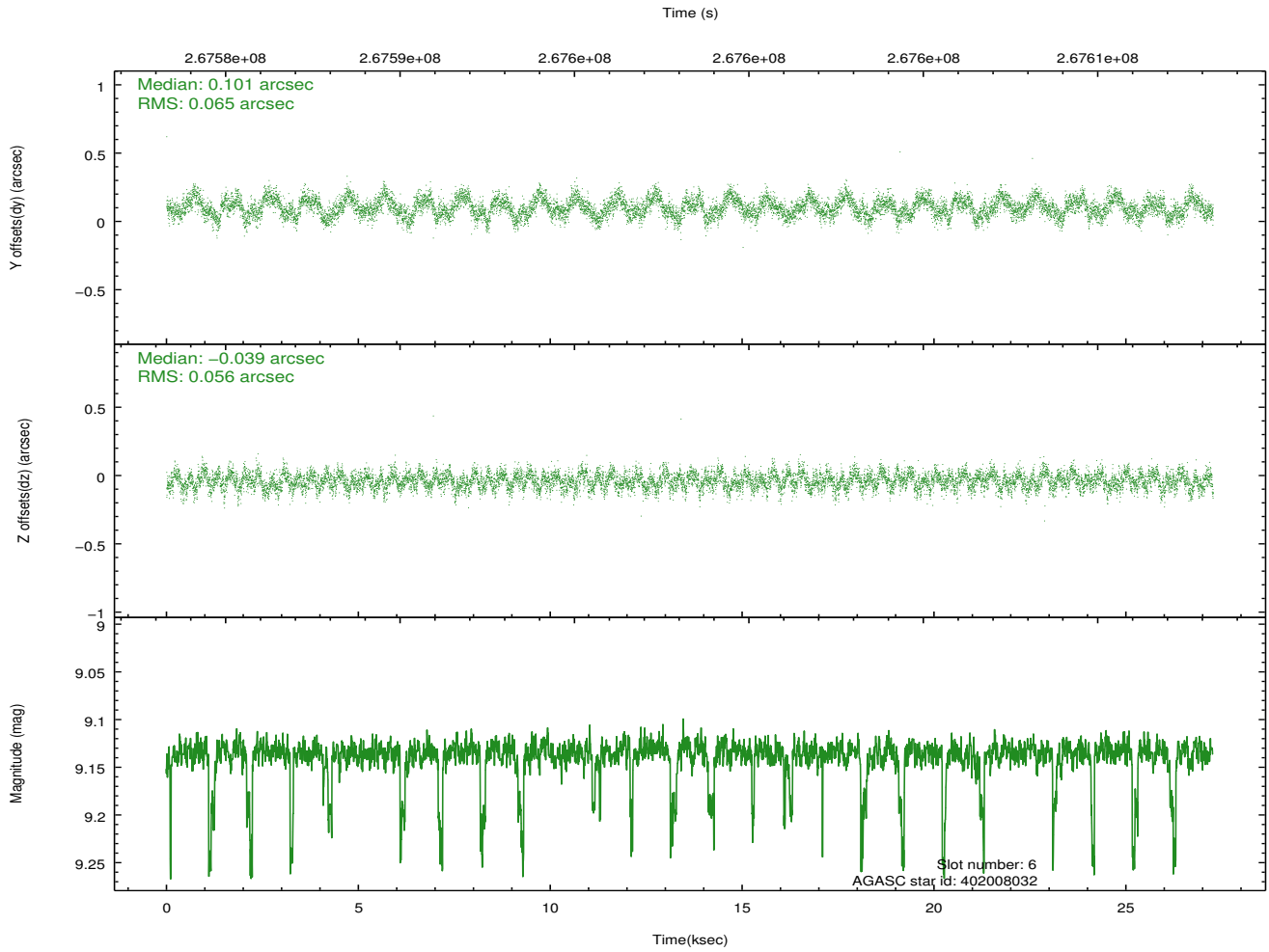
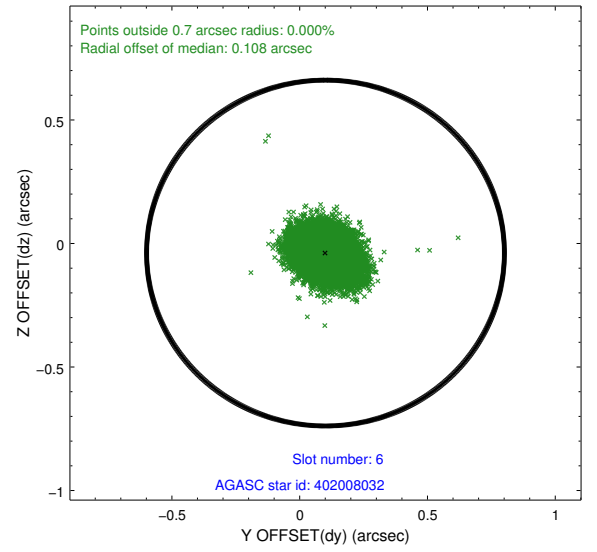
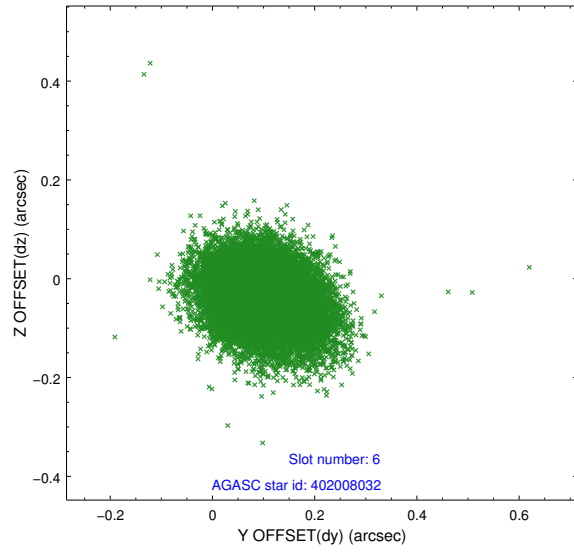
2.4.2 Slot 4



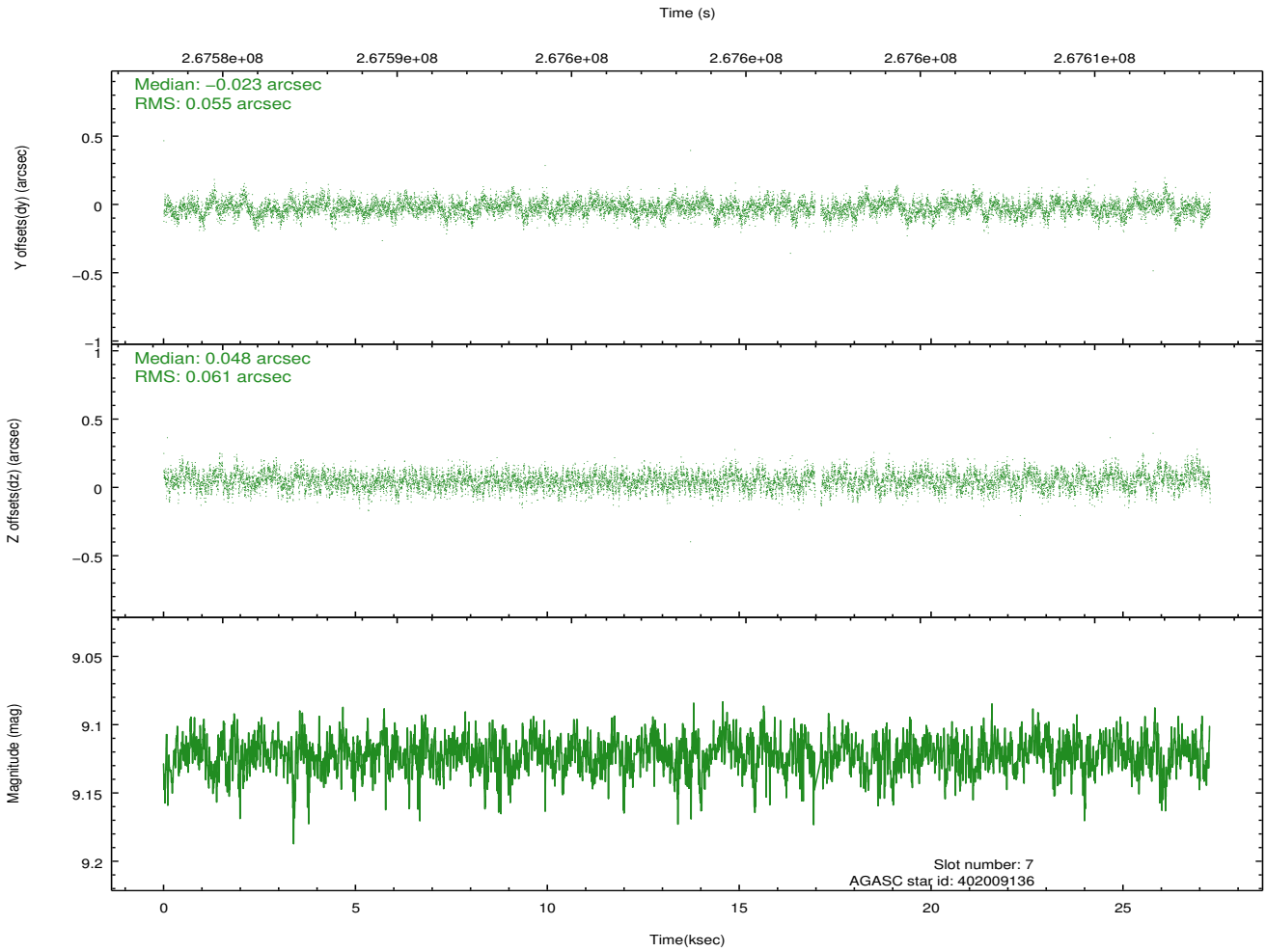
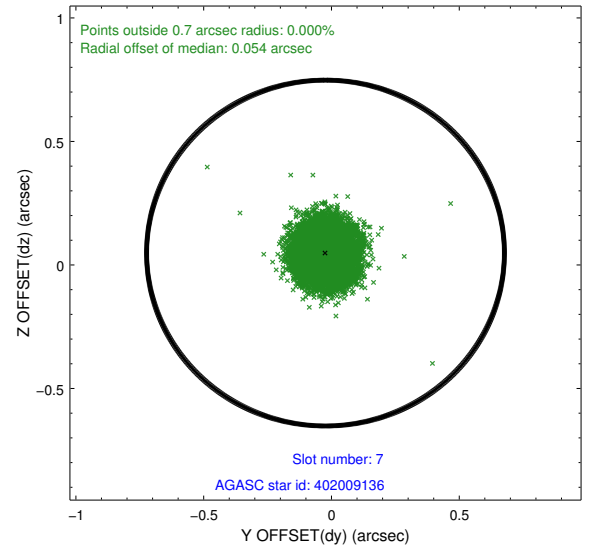
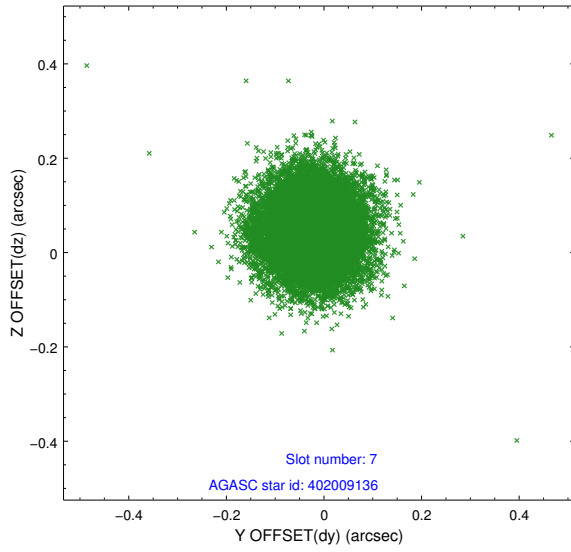
2.4.3 Slot 5



2.4.4 Slot 6

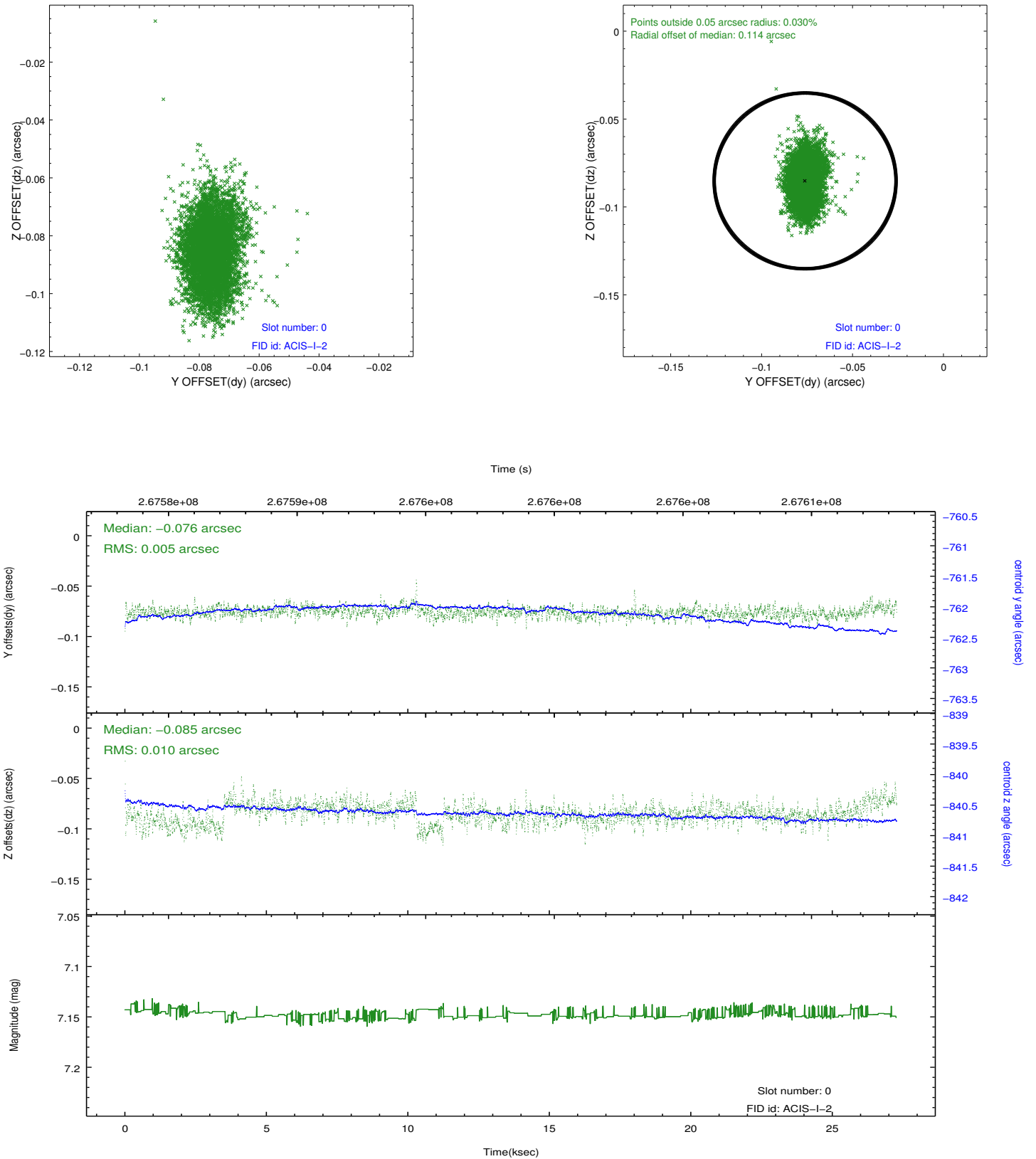


2.4.5 Slot 7

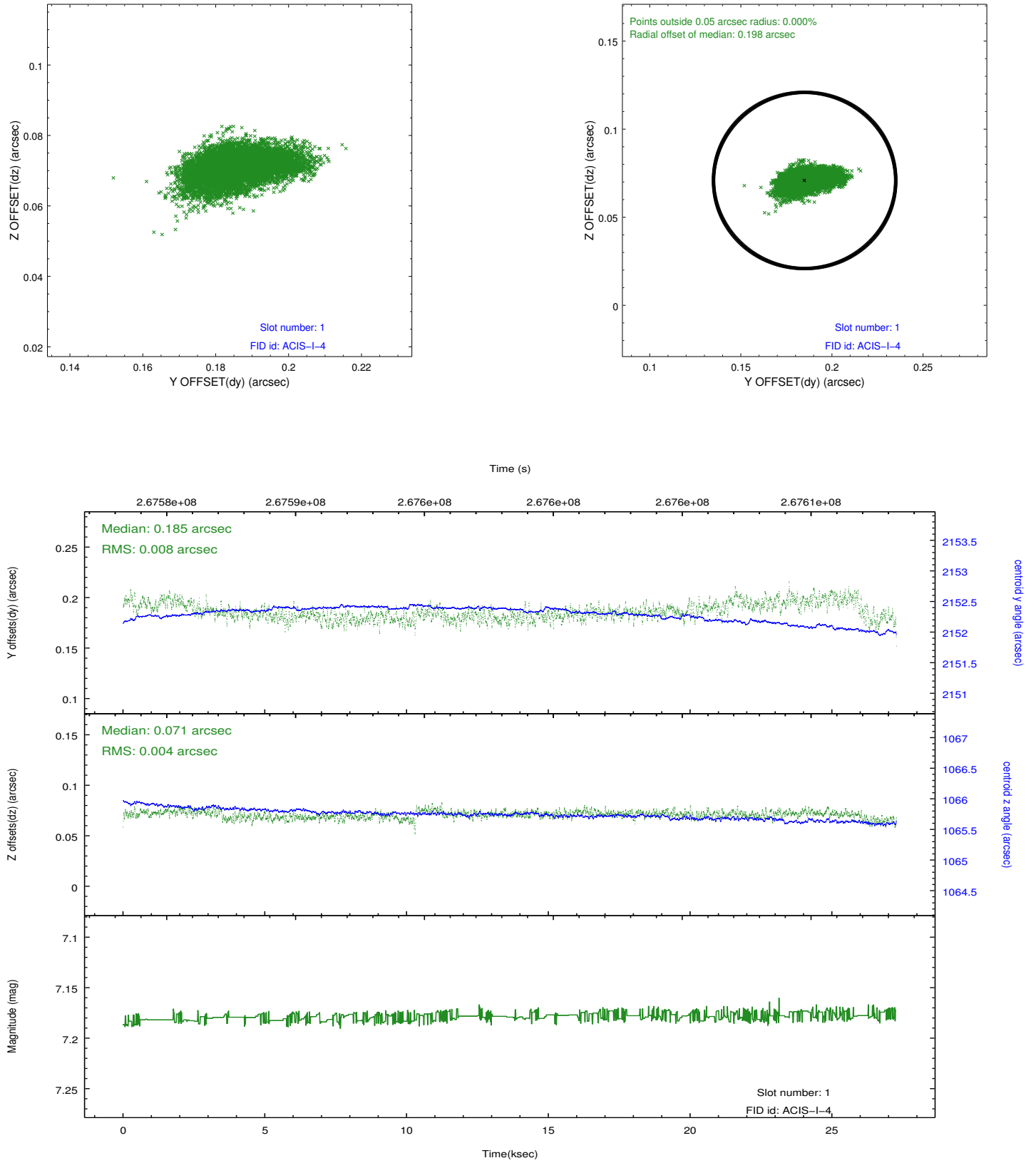


2.5 FID Slots

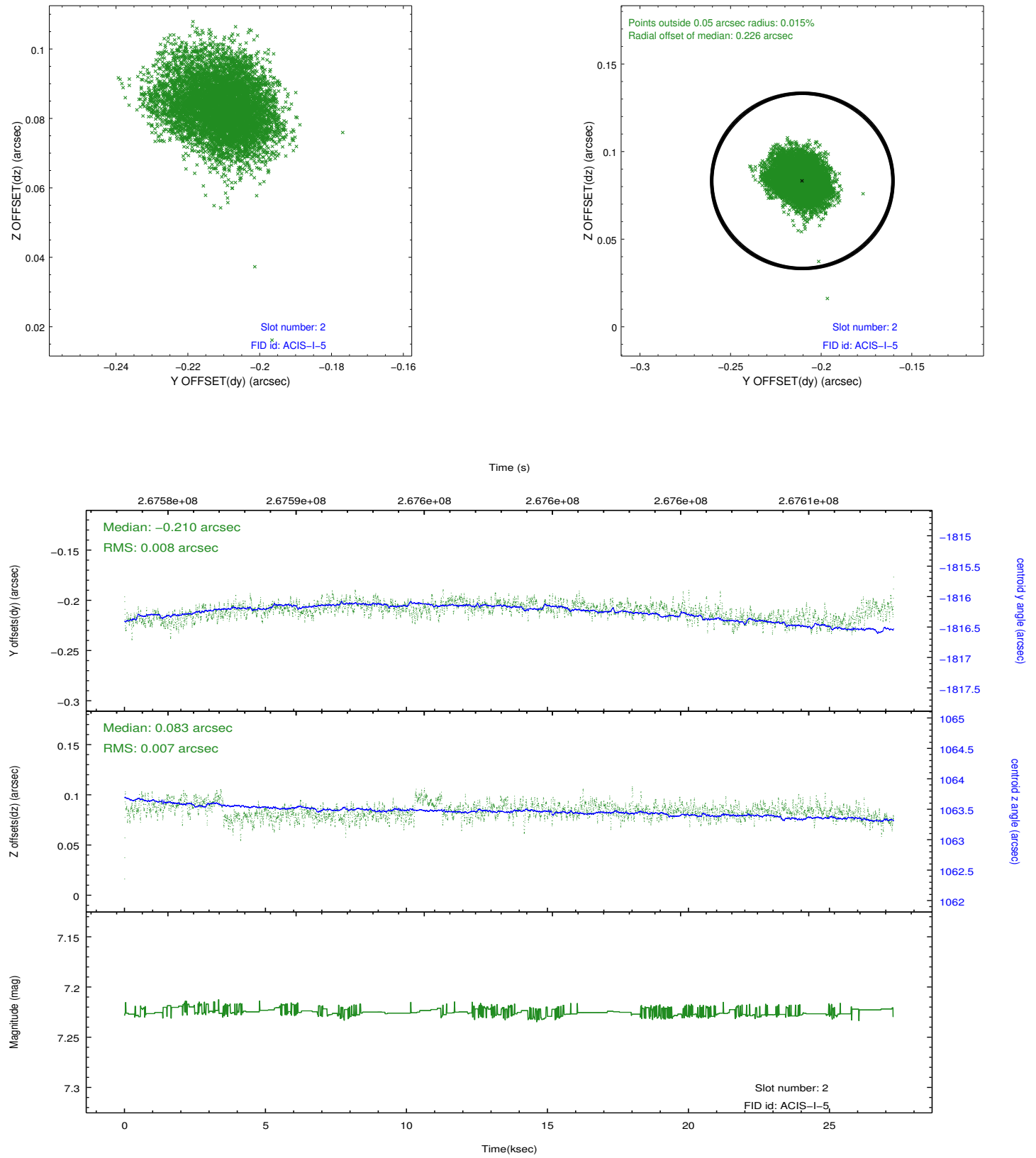
2.5.1 Slot 0



2.5.2 Slot 1



2.5.3 Slot 2



A Summary

A.1 Status

V&V Scientist	Jen Lauer
V&V Date (YYYY-MM-DD)	2012.04.05
V&V Edition	1
V&V Disposition and Status	OK
V&V Charge Time	27.0443999

A.2 Comments