

V&V Reference Report

L2 ASCDS Version : 8.4.3.1

Observation 6835 - L2 Version 2
Chandra X-Ray Center

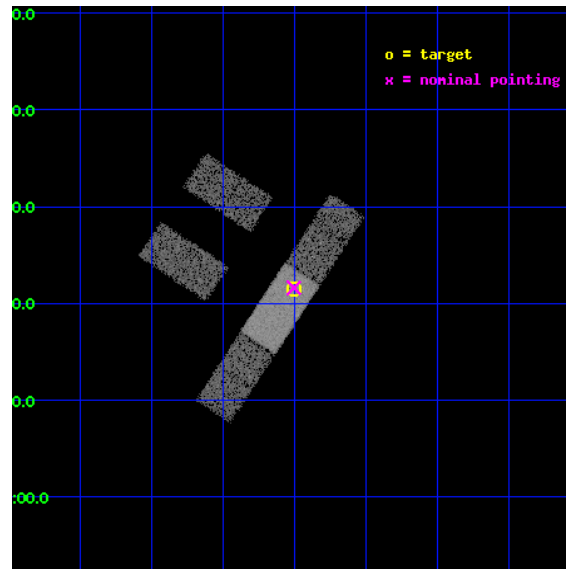
L2 Processing Date : Apr 5 2012

Contents

1	Front	2
2	OBI	3
2.1	OBI	3
2.1.1	Images	3
2.1.2	Bias	3
2.1.3	Parameters	4
2.1.4	Events	4
2.2	Compared Parameters	5
2.3	Aspect	6
2.4	Star Slots	9
2.4.1	Slot 3	9
2.4.2	Slot 4	10
2.4.3	Slot 5	11
2.4.4	Slot 6	12
2.4.5	Slot 7	13
2.5	FID Slots	14
2.5.1	Slot 0	14
2.5.2	Slot 1	15
2.5.3	Slot 2	16
A	Summary	17
A.1	Status	17
A.2	Comments	17

1 Front

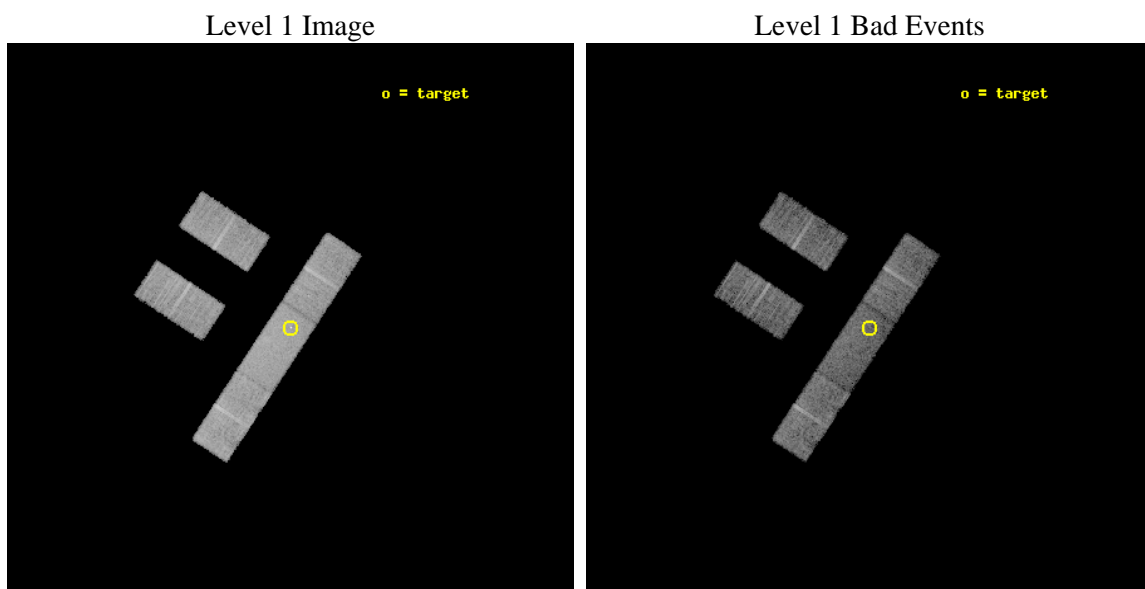
seq_num	701253	Sequence number
obs_id	6835	Observation id
title	Measuring the Size of a Quasar With Microlensing	Proposal title
observer	Prof. Christopher Kochanek	Principal investigator
object	Q2237+0305	Source name
dtcycle	0	
cycle	P	events from which exps? Prim/Second/Both
ra_targ	340.125833	Observer's specified target RA [deg]
dec_targ	3.358333	Observer's specified target Dec [deg]
ra_nom	340.12650874312	Nominal RA [deg]
dec_nom	3.3603449657685	Nominal Dec [deg]
roll_nom	123.40805150986	Nominal Roll [deg]
revision	2	Processing version of data
ontime	8061.3999435306	Sum of GTIs [s]
livetime	7871.3756743107	Livetime [s]
ontime2	8059.6589234471	Sum of GTIs [s]
ontime3	8061.3999435306	Sum of GTIs [s]
ontime6	8061.3999435306	Sum of GTIs [s]
ontime7	8061.3999435306	Sum of GTIs [s]
ontime8	8061.3999435306	Sum of GTIs [s]
l2events	36922	Number of level 2 events



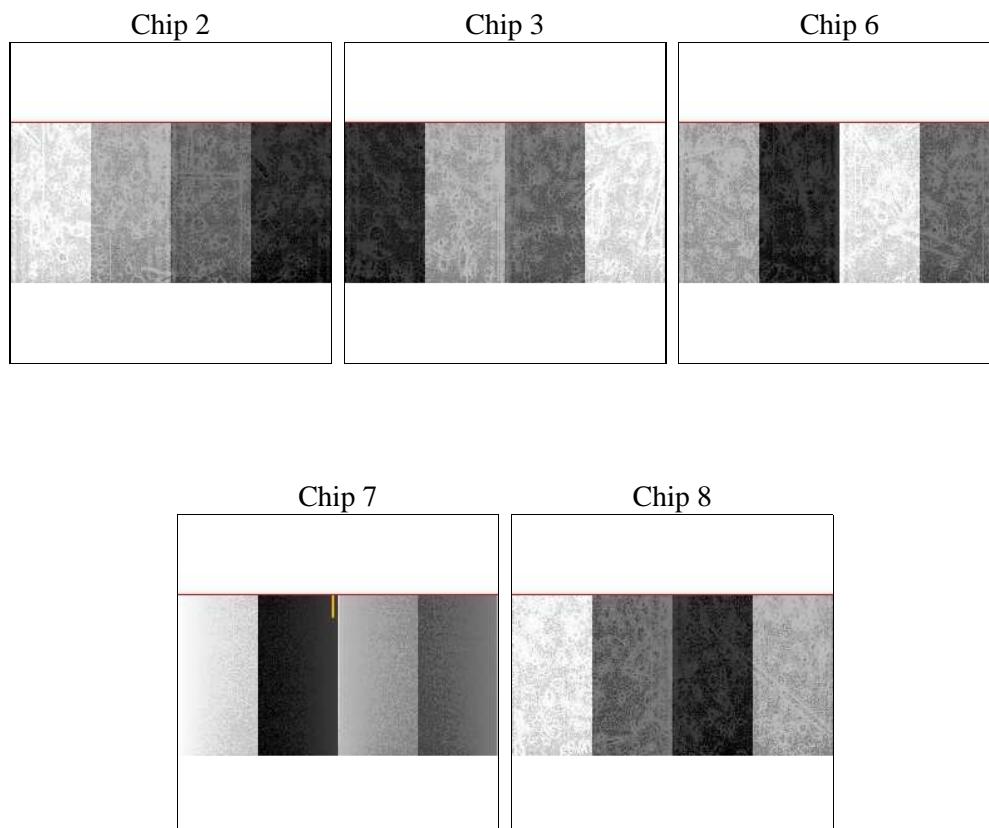
2 OBI

2.1 OBI

2.1.1 Images



2.1.2 Bias



2.1.3 Parameters

obi_num	0	Obi number	sched_exp_time	8000.000000	[s] Scheduled observation exposure time
ascdsver	8.4.3.1	Processing system revision	ontime	8061.3999435306	Sum of GTIs [s]
caldsver	4.4.9	 	ontime2	8059.6589234471	Sum of GTIs [s]
date	2012-04-06T01:28:04	Date and time of file creation	ontime3	8061.3999435306	Sum of GTIs [s]
revision	2	Processing version of data	ontime6	8061.3999435306	Sum of GTIs [s]
			ontime7	8061.3999435306	Sum of GTIs [s]
			ontime8	8061.3999435306	Sum of GTIs [s]
			l1events	221560	Number of level 1 events

2.1.4 Events

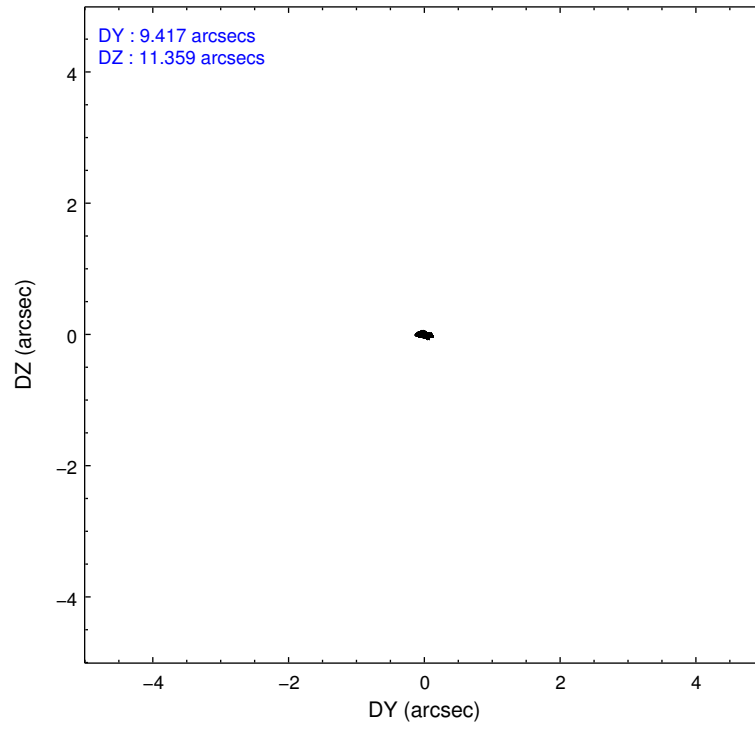
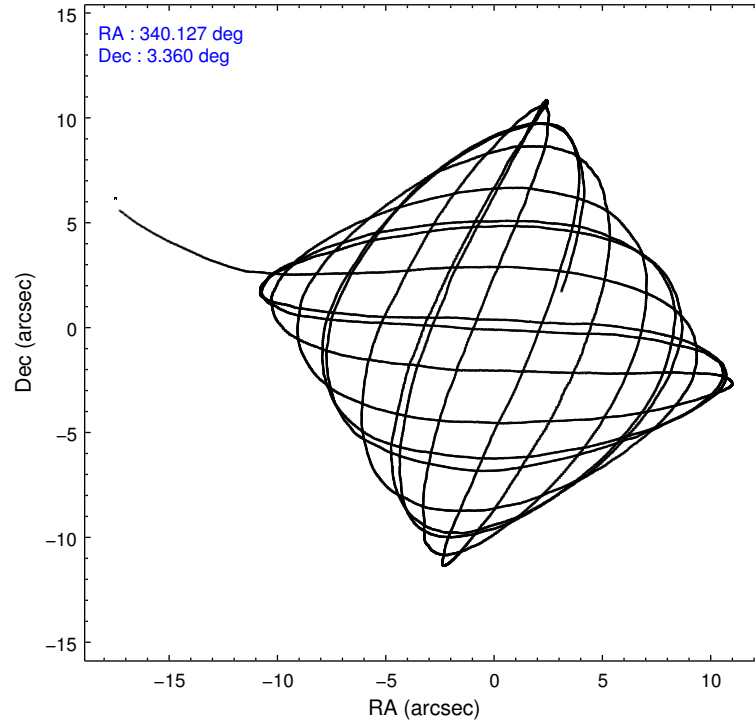
	ccd 2	ccd 3	ccd 6	ccd 7	ccd 8
level 1 events	38726	39286	40350	51505	51693
rejected events	34282	34798	35603	30013	41492
rejected %	88%	88%	88%	58%	80%

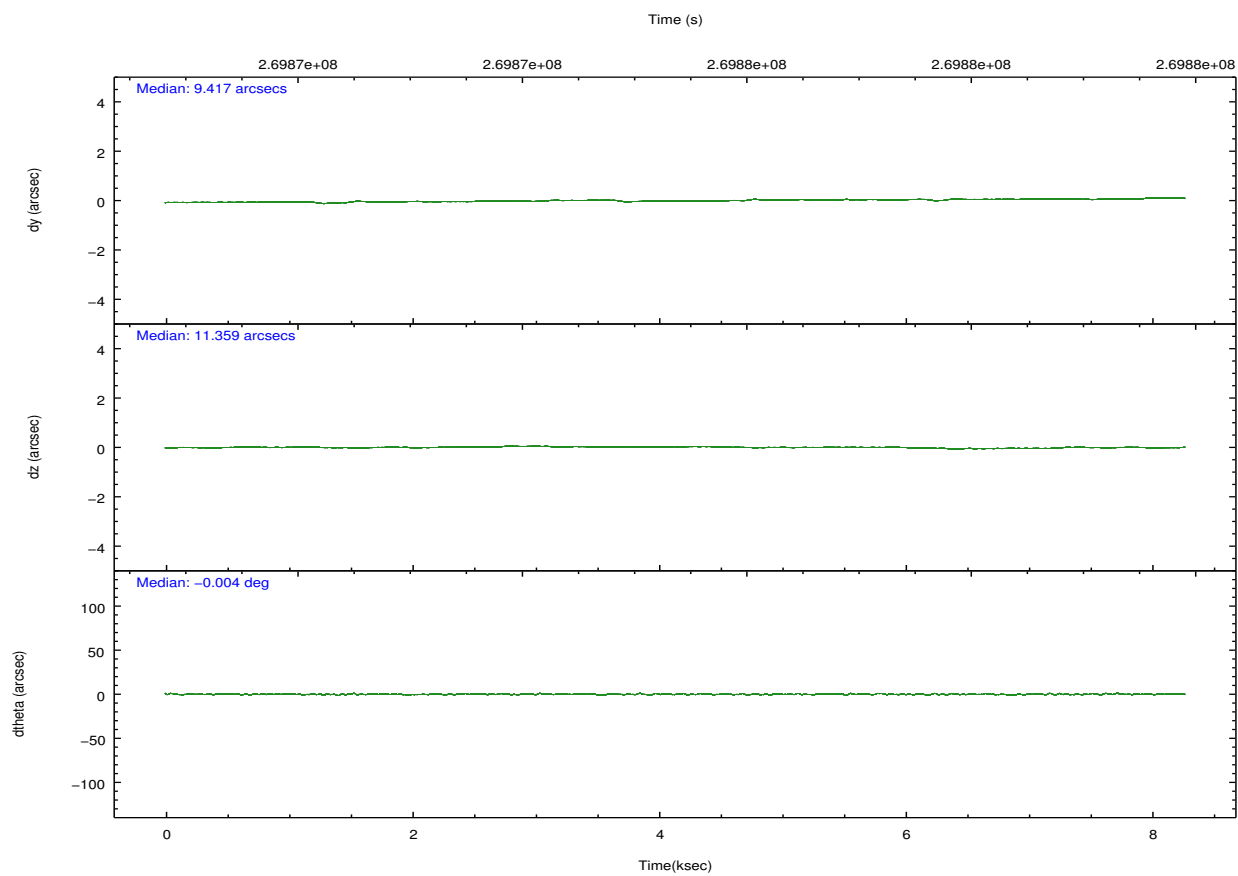
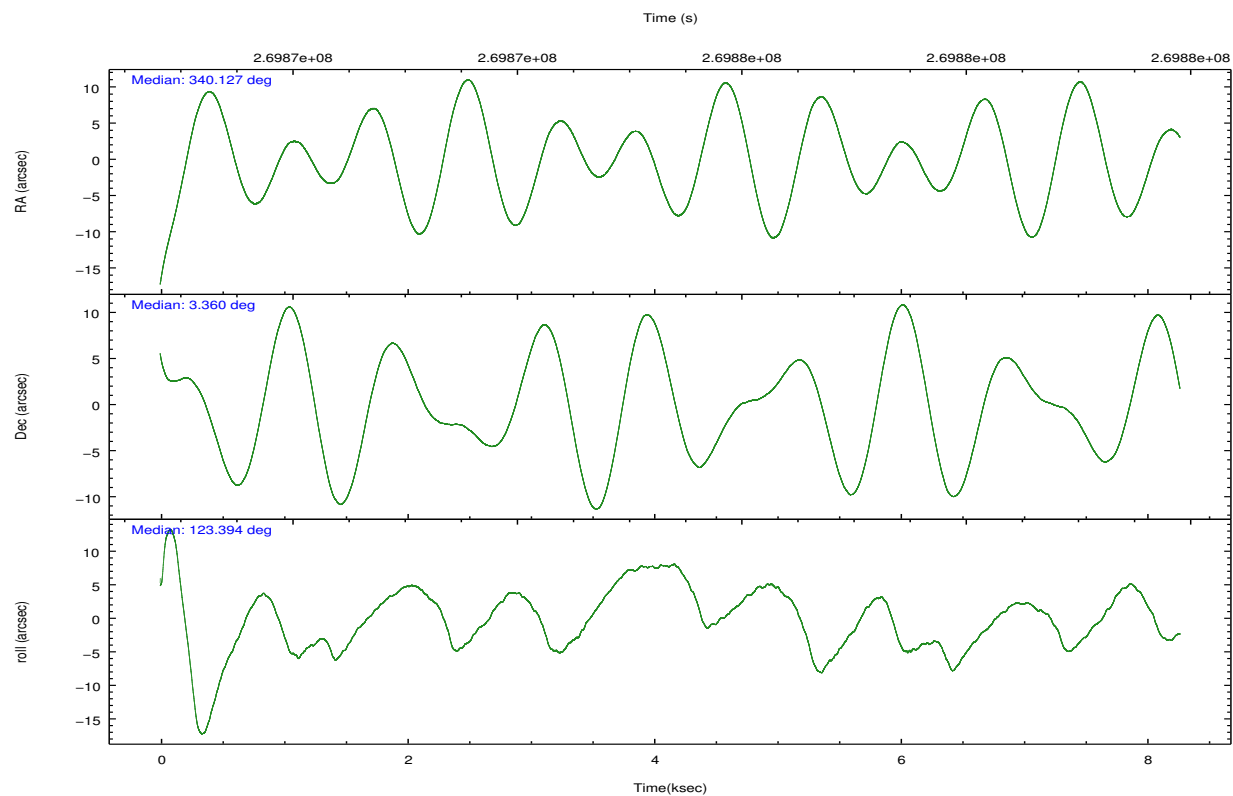
	ccd 2	ccd 3	ccd 6	ccd 7	ccd 8
grade 0 events	1908	1824	1709	1970	2903
	4%	4%	4%	3%	5%
grade 1 events	22	15	12	56	27
	0%	0%	0%	0%	0%
grade 2 events	824	851	1028	4270	2392
	2%	2%	2%	8%	4%
grade 3 events	492	527	574	2069	992
	1%	1%	1%	4%	1%
grade 4 events	499	511	525	2003	974
	1%	1%	1%	3%	1%
grade 5 events	1403	1660	1639	4742	2252
	3%	4%	4%	9%	4%
grade 6 events	724	778	914	11186	2942
	1%	1%	2%	21%	5%
grade 7 events	32854	33120	33949	25209	39211
	84%	84%	84%	48%	75%

2.2 Compared Parameters

Parameter	Planned	Actual	Parameter	Planned	Actual
Instrument	ACIS	ACIS	Obspar format version number	7	7
Detector	ACIS-23678	ACIS-23678	Obspar file type	PREDICTED	ACTUAL
Grating	NONE	NONE	Obspar update status	NONE	UPDATED
Data mode	VFAINT	VFAINT	Number of optional ACIS chips dropped	0	0
Observation mode	POINTING	POINTING	On-chip summing requested	N	N
[deg] Pointing RA	340.151102	340.1265087431192	Subarray requested	CUSTOM	1/2
[deg] Pointing Dec	3.348430	3.360344965768466	Subarray start row	257	257
[deg] Pointing Roll	123.249989	123.4080515098621	Subarray row count	512	512
[mm] SIM focus pos	-0.684267	-0.6828225247311905	Alternating exposures requested	N	N
[mm] SIM defocus	0	0.001444936568705701	[s] Primary exposure time	0.000000	1.7
[mm] SIM translation stage pos	-190.132523	-190.1400660498719			
[mm] SIM translation stage offset	0	0.00754346686406393			
[s] Observation start time (MET)	269871493.184000	269870694.60202			
Observation start date	2006-07-21T12:17:08	2006-07-21T12:04:54			
[s] Observation end time (MET)	269879493.184000	269880914.8775			
Observation end date	2006-07-21T14:30:28	2006-07-21T14:55:14			
Read mode	TIMED	TIMED			

2.3 Aspect



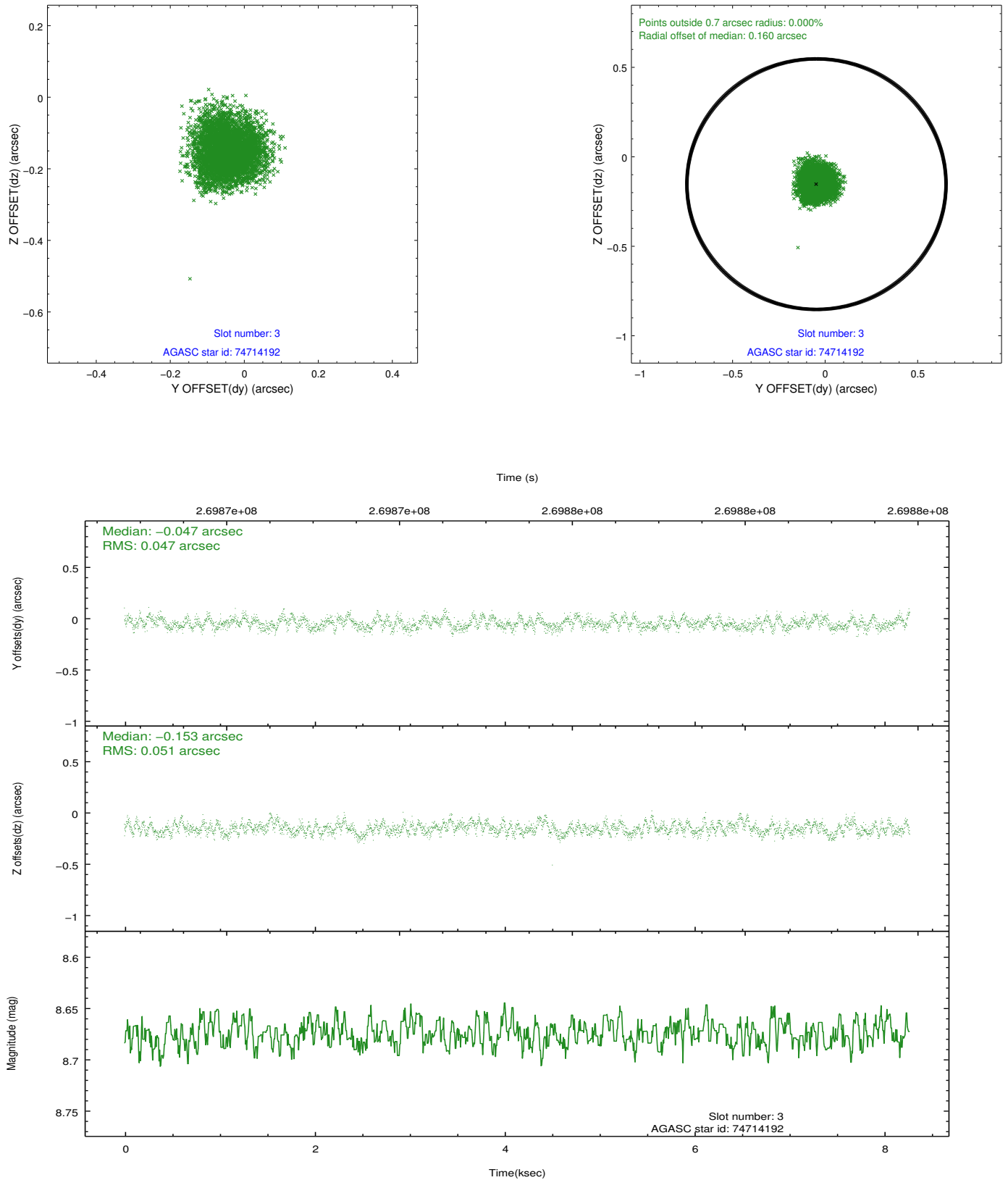


Slot Statistics

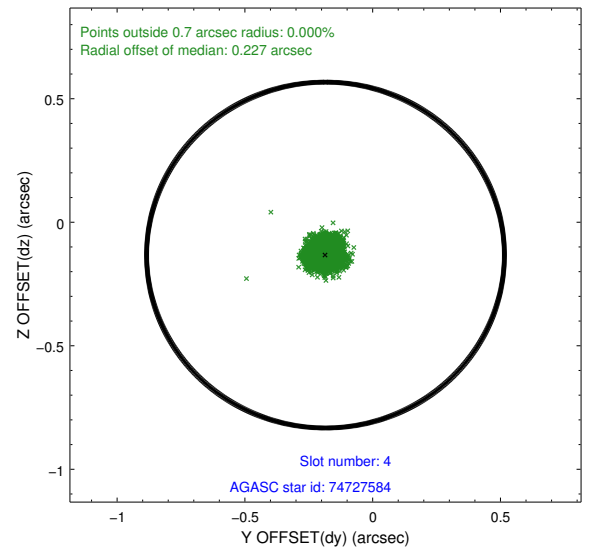
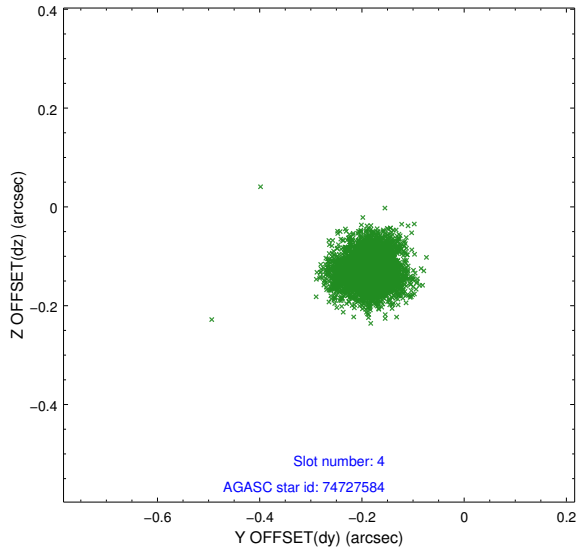
slot	status	id	mag	n_pts	med_dy	med_dz	dr1	dr2	ra	dec	mean_y	mean_z
0	FID	ACIS-S-2	7.11	2018	-0.090	-0.064	0.006	0.010	0.000000	0.000000	-762.33	-1732.70
1	FID	ACIS-S-4	7.21	2018	0.090	0.044	0.006	0.010	0.000000	0.000000	2150.83	175.18
2	FID	ACIS-S-6	7.35	2018	-0.027	0.027	0.007	0.012	0.000000	0.000000	400.59	813.33
3	GUIDE	74714192	8.67	4031	-0.047	-0.153	0.075	0.117	339.623837	3.342441	1021.08	1596.36
4	GUIDE	74727584	6.99	4036	-0.185	-0.133	0.049	0.080	339.633744	3.463732	1366.76	1327.49
5	GUIDE	74842128	8.53	4034	0.256	0.064	0.073	0.120	340.118134	3.132788	-583.66	525.18
6	GUIDE	74854992	8.27	4034	-0.031	0.164	0.062	0.100	340.342808	3.603730	391.19	-1079.40
7	GUIDE	74855160	9.26	4004	0.013	0.057	0.113	0.199	340.321337	4.258359	2405.10	-2306.96

2.4 Star Slots

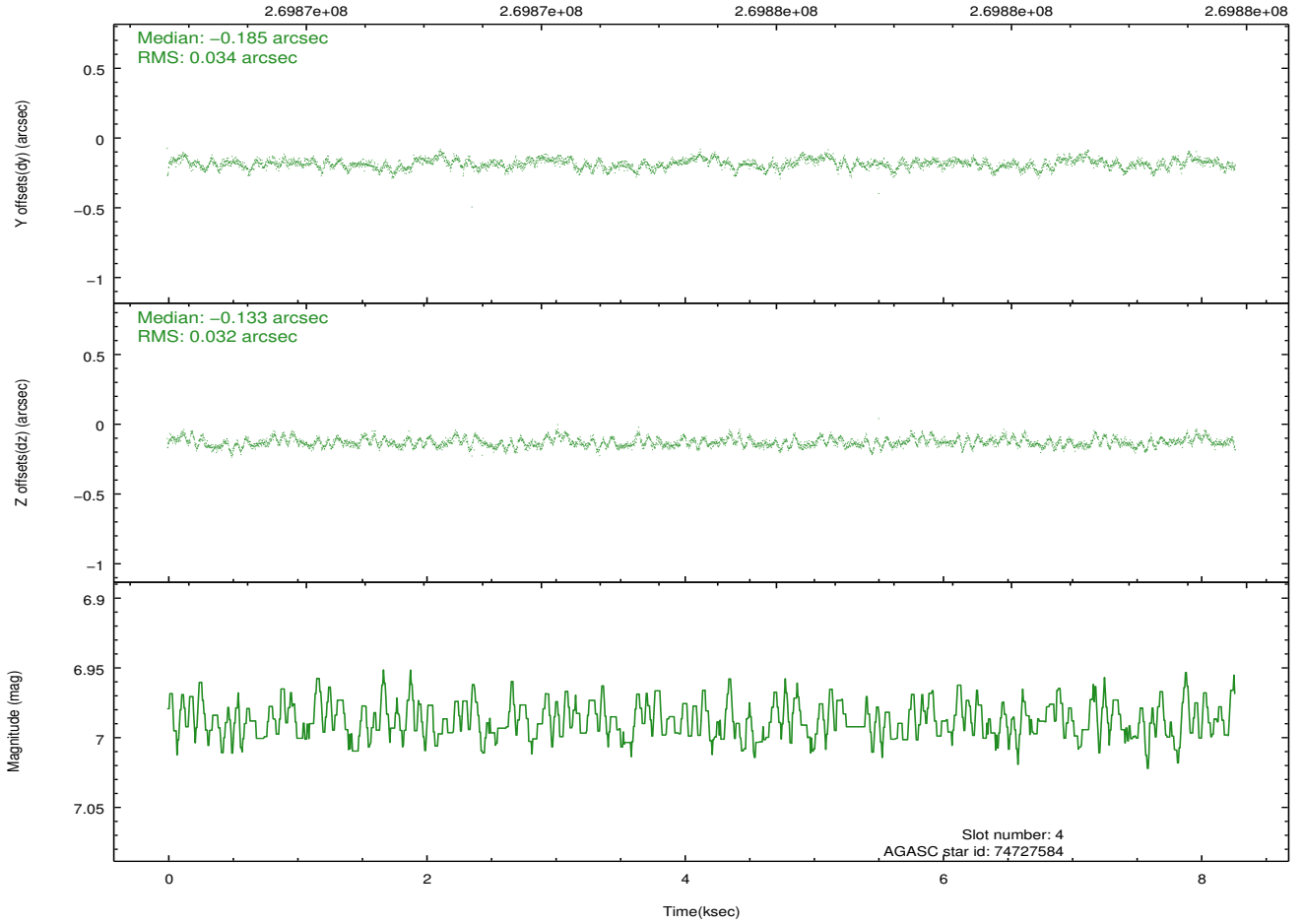
2.4.1 Slot 3



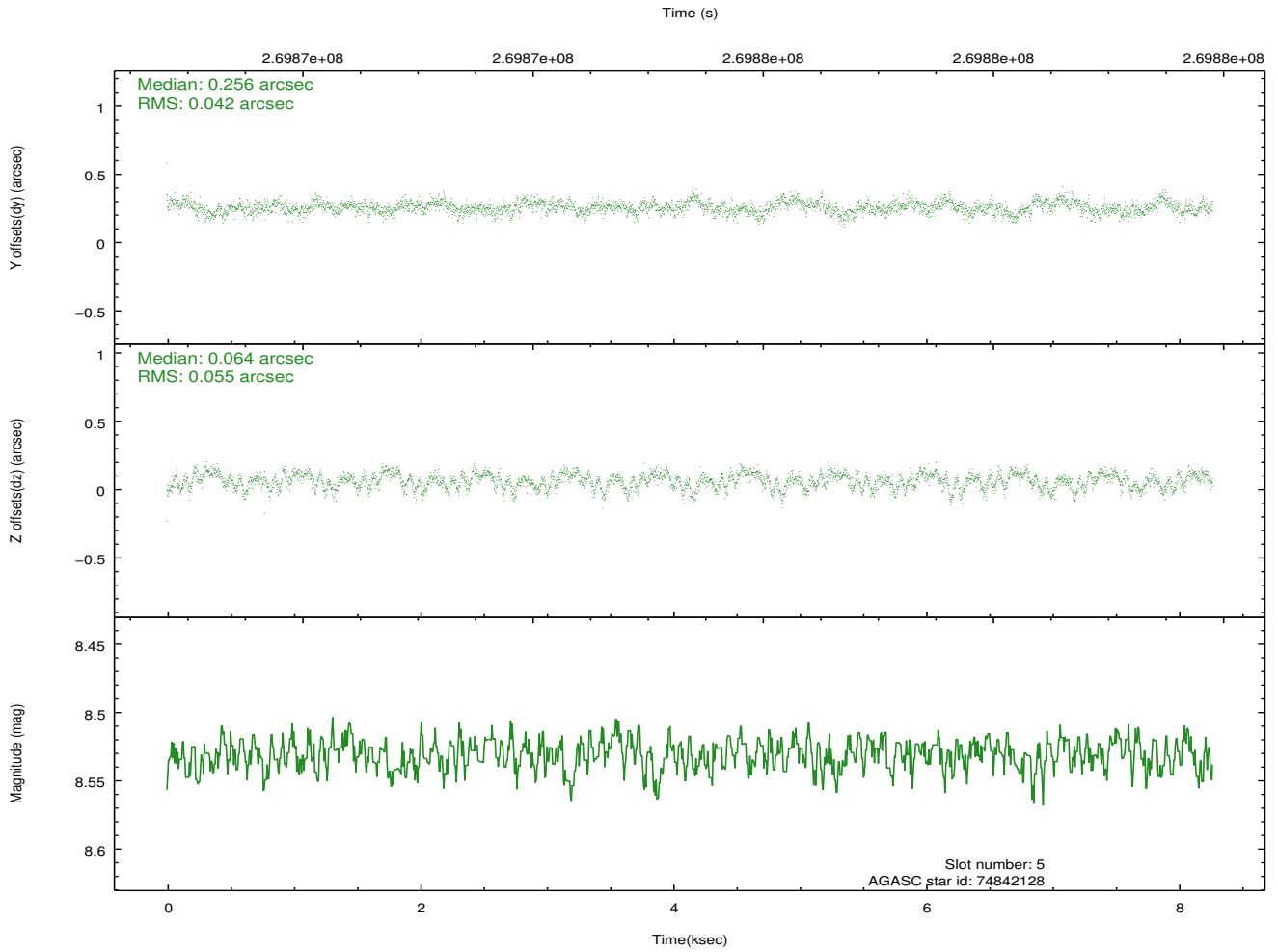
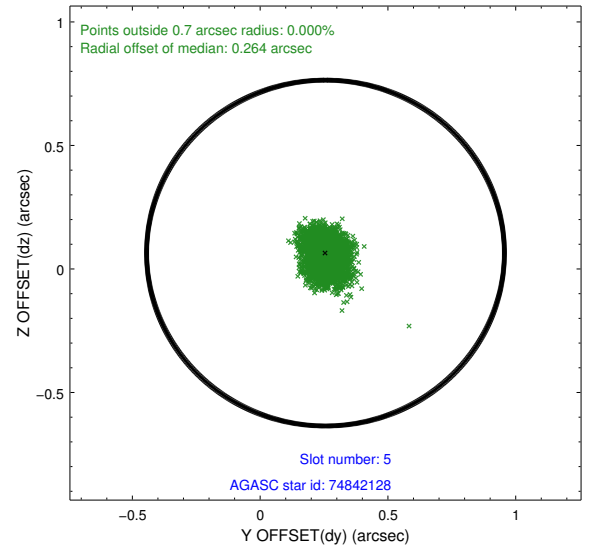
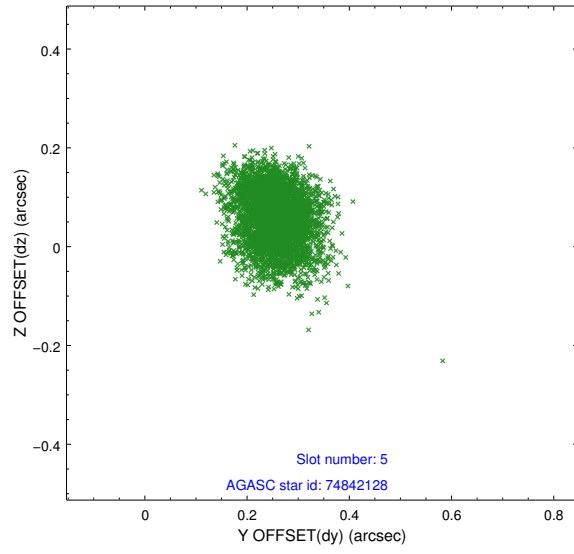
2.4.2 Slot 4



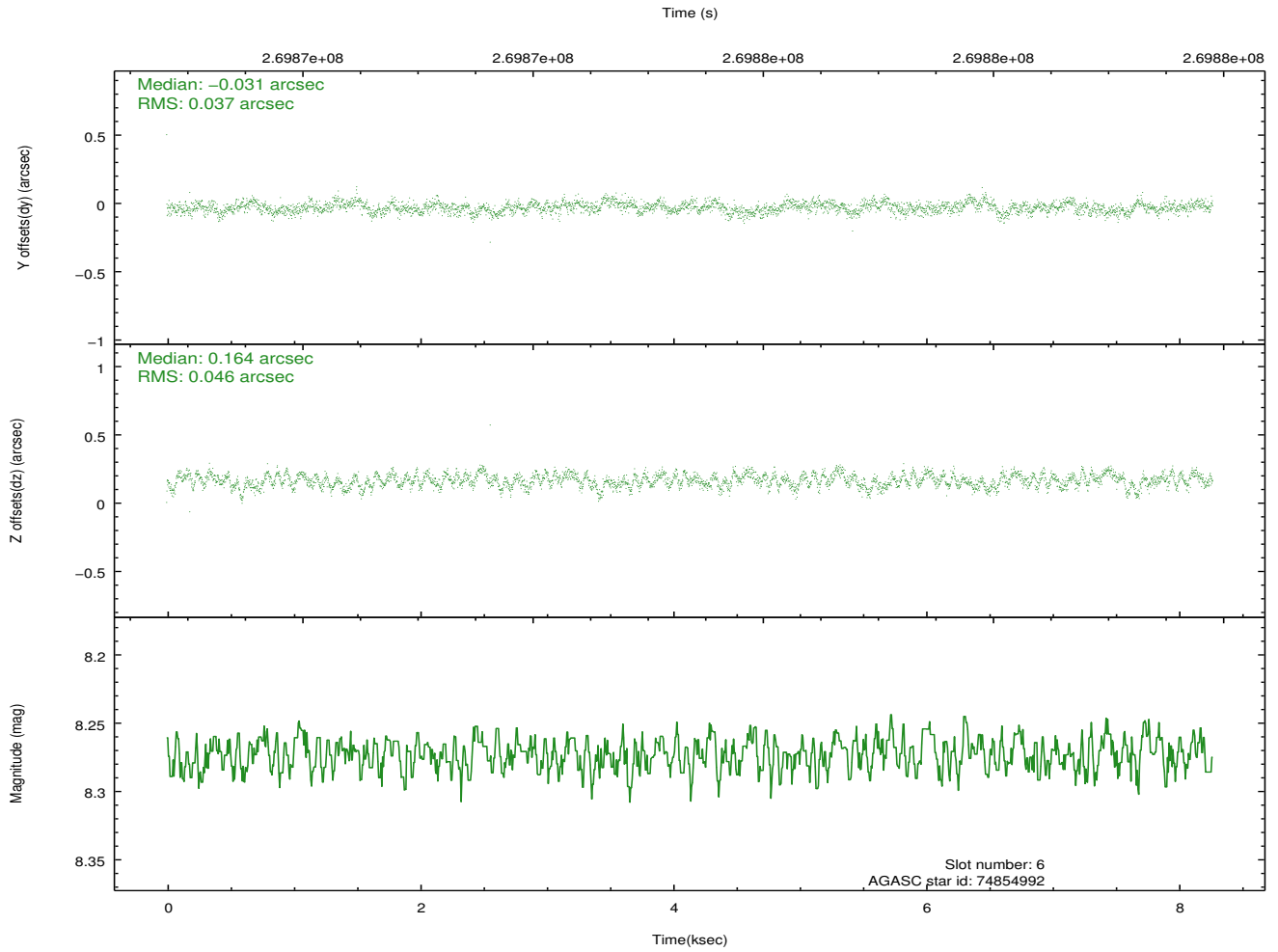
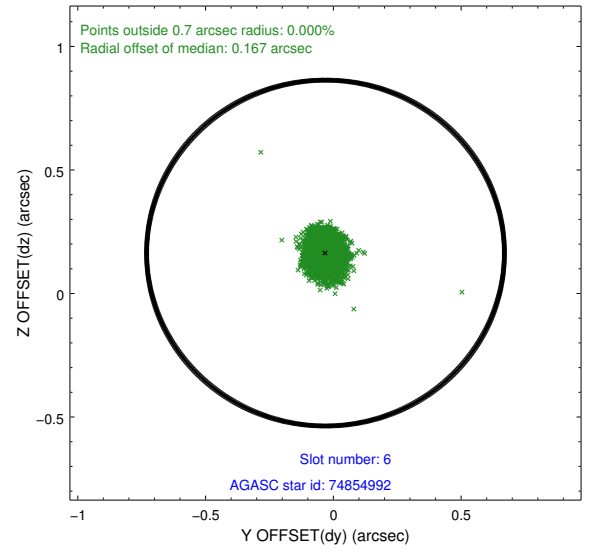
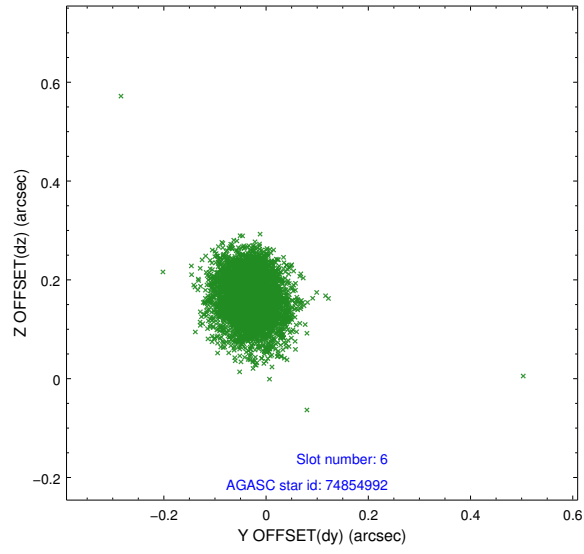
Time (s)



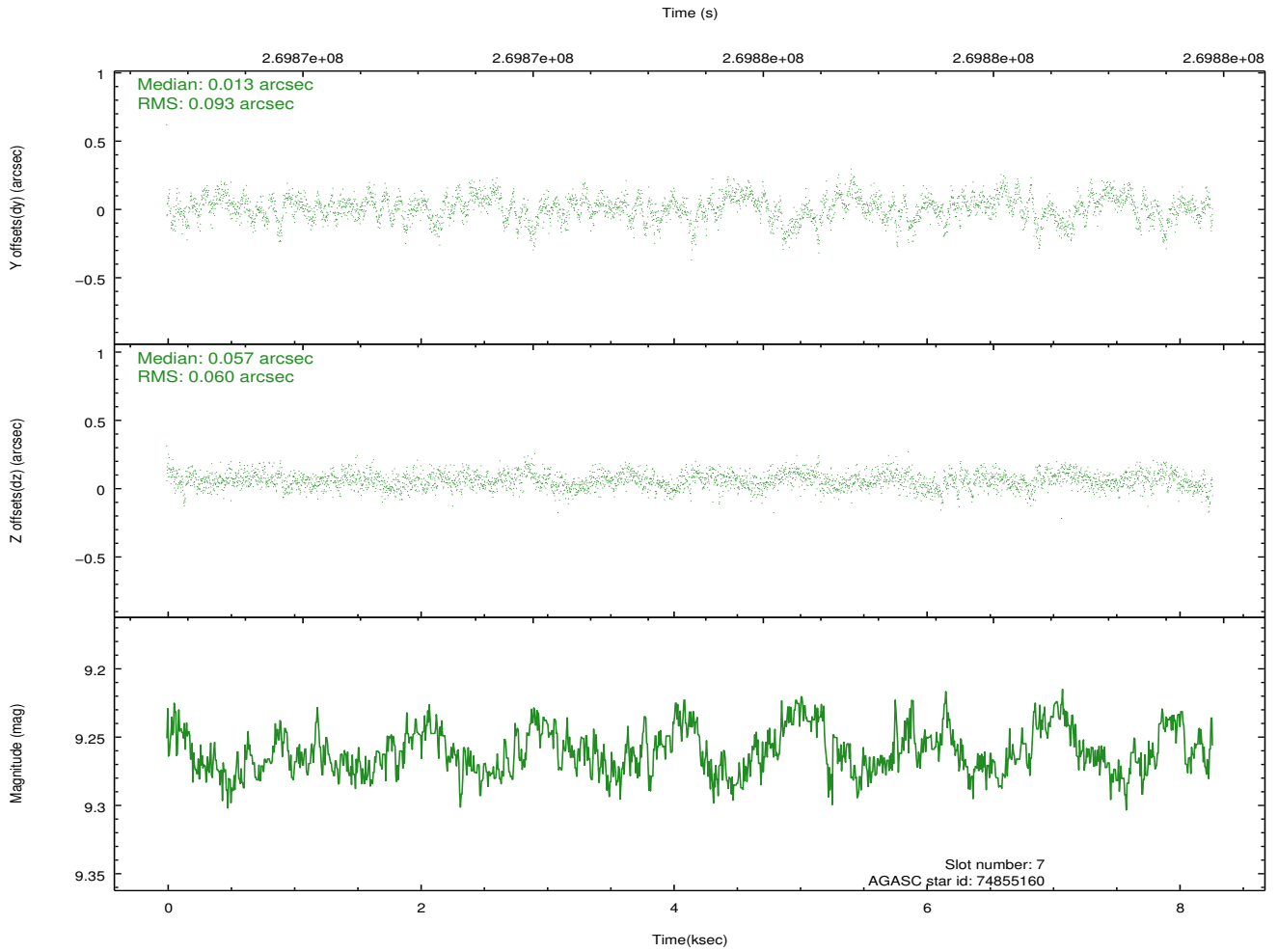
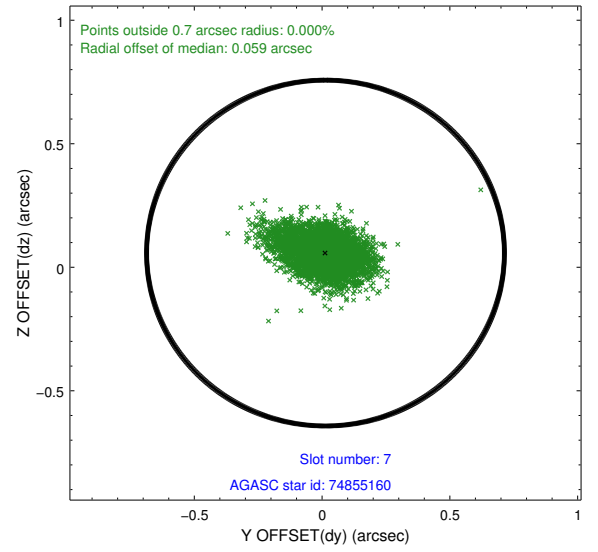
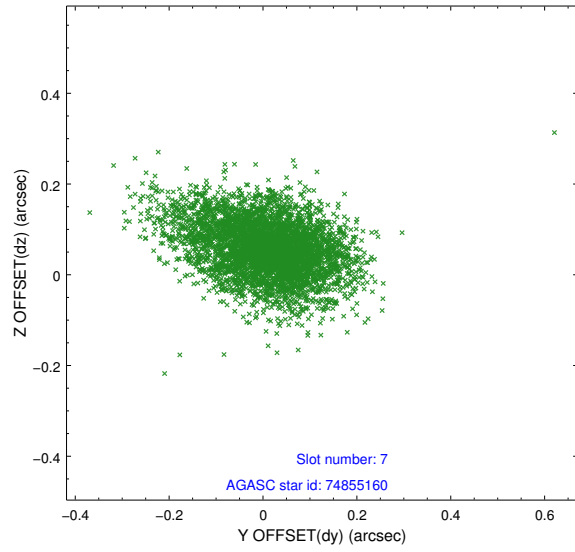
2.4.3 Slot 5



2.4.4 Slot 6

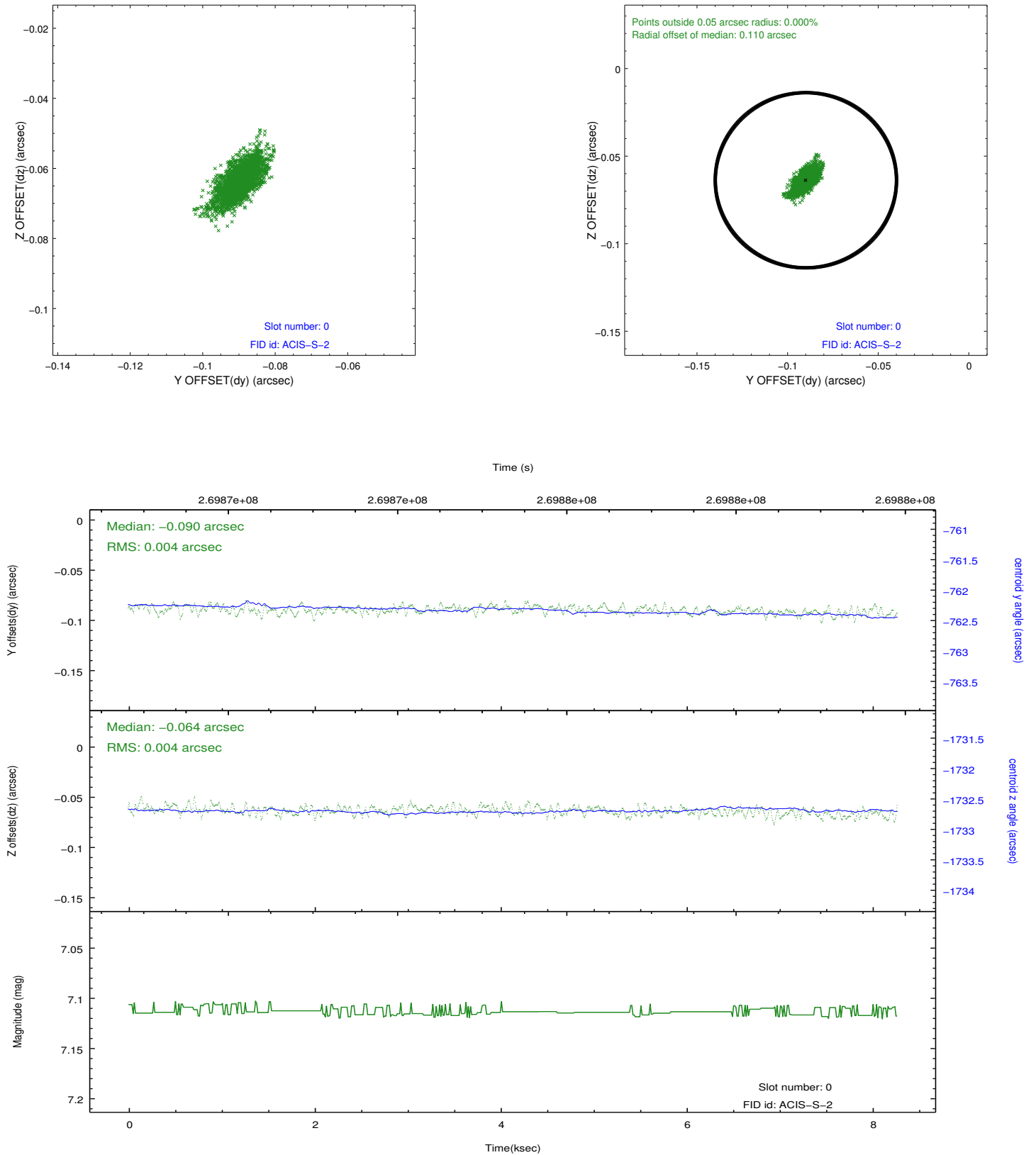


2.4.5 Slot 7

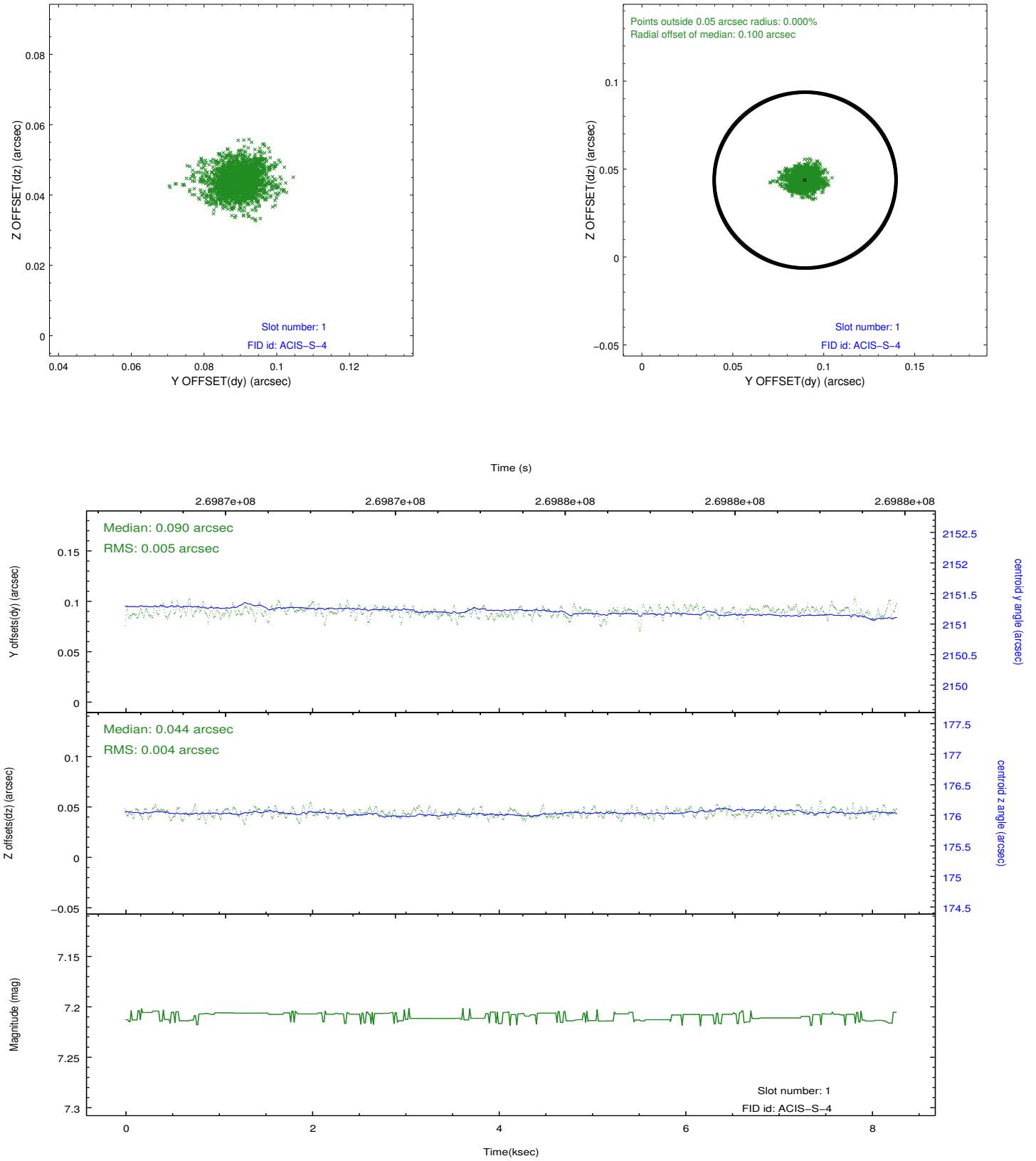


2.5 FID Slots

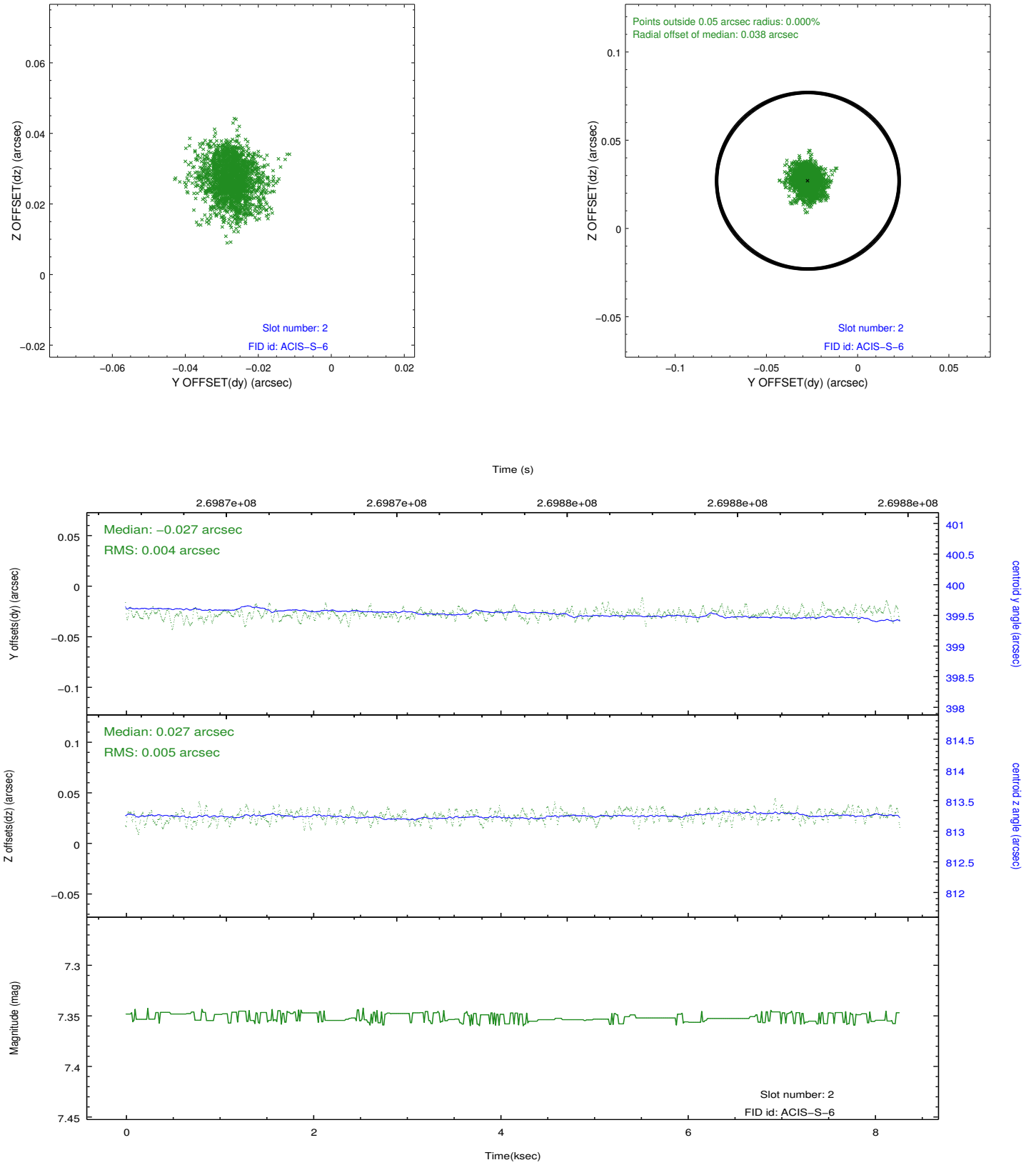
2.5.1 Slot 0



2.5.2 Slot 1



2.5.3 Slot 2



A Summary

A.1 Status

V&V Scientist	Jen Lauer
V&V Date (YYYY-MM-DD)	2012.04.06
V&V Edition	1
V&V Disposition and Status	OK
V&V Charge Time	8.06139994

A.2 Comments

Monitoring interval is 26 days after obsid 6834.