

V&V Reference Report

L2 ASCDS Version : 8.4.3.1

Observation 6785 - L2 Version 2
Chandra X-Ray Center

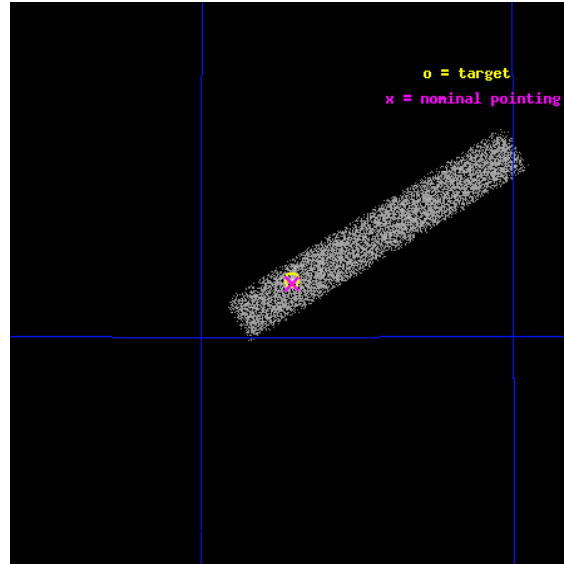
L2 Processing Date : Apr 8 2012

Contents

1	Front	2
2	OBI	3
2.1	OBI	3
2.1.1	Images	3
2.1.2	Bias	3
2.1.3	Parameters	4
2.1.4	Events	4
2.2	Compared Parameters	5
2.3	Aspect	6
2.4	Star Slots	9
2.4.1	Slot 3	9
2.4.2	Slot 4	10
2.4.3	Slot 5	11
2.4.4	Slot 6	12
2.4.5	Slot 7	13
2.5	FID Slots	14
2.5.1	Slot 0	14
2.5.2	Slot 1	15
2.5.3	Slot 2	16
A	Summary	17
A.1	Status	17
A.2	Comments	17

1 Front

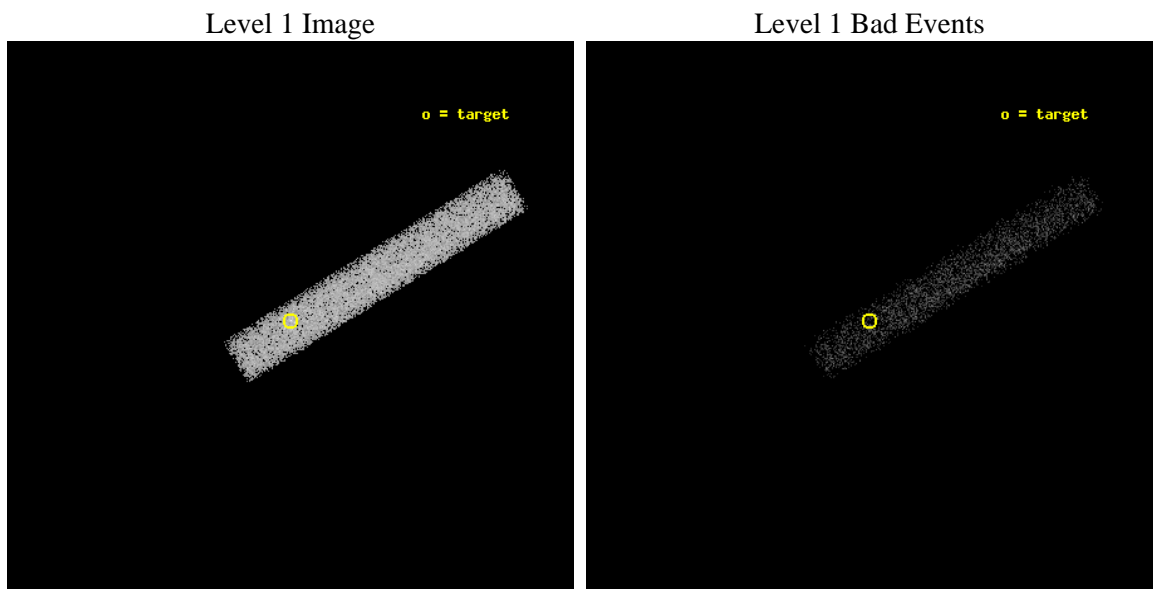
seq_num	701203	Sequence number
obs_id	6785	Observation id
title	Active Galactic Nuclei in nearby galaxies: a new view of the origin of the radio-loud radio-quiet dichotomy?	Proposal title
observer	Dr. Alessandro Capetti	Principal investigator
object	UGC7797	Source name
dtcycle	0	
cycle	P	events from which exps? Prim/Second/Both
ra_targ	189.354167	Observer's specified target RA [deg]
dec_targ	74.191944	Observer's specified target Dec [deg]
ra_nom	189.3548080927	Nominal RA [deg]
dec_nom	74.189842373046	Nominal Dec [deg]
roll_nom	328.37651231341	Nominal Roll [deg]
revision	2	Processing version of data
ontime	15185.199094892	Sum of GTIs [s]
livetime	13772.174038538	Livetime [s]
ontime7	15185.199094892	Sum of GTIs [s]
l2events	11028	Number of level 2 events



2 OBI

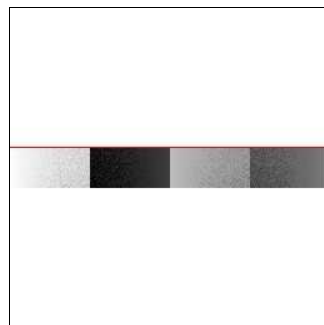
2.1 OBI

2.1.1 Images



2.1.2 Bias

Chip 7



2.1.3 Parameters

obi_num	0	Obi number	sched_exp_time	15000.710000	[s] Scheduled observation exposure time
ascdsver	8.4.3.1	Processing system revision	ontime	15185.199094892	Sum of GTIs [s]
caldsver	4.4.9	 	ontime7	15185.199094892	Sum of GTIs [s]
date	2012-04-08T18:28:45	Date and time of file creation	l1events	26849	Number of level 1 events
revision	2	Processing version of data			

2.1.4 Events

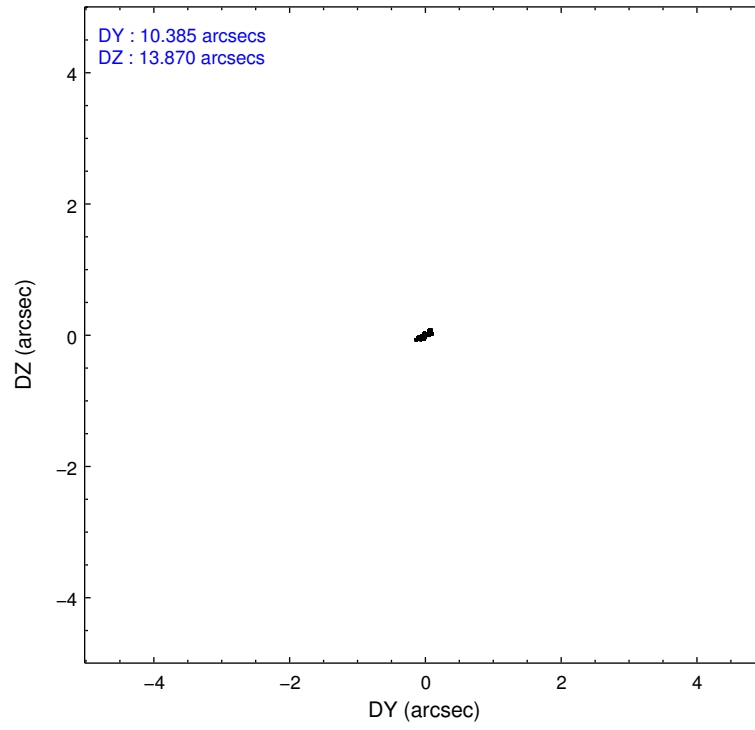
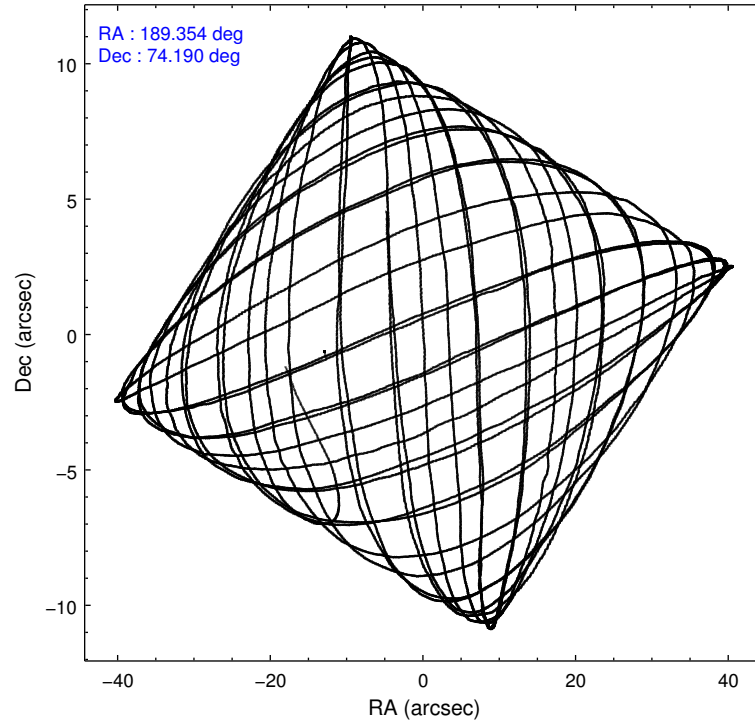
	ccd 7
level 1 events	26849
rejected events	15393
rejected %	57%

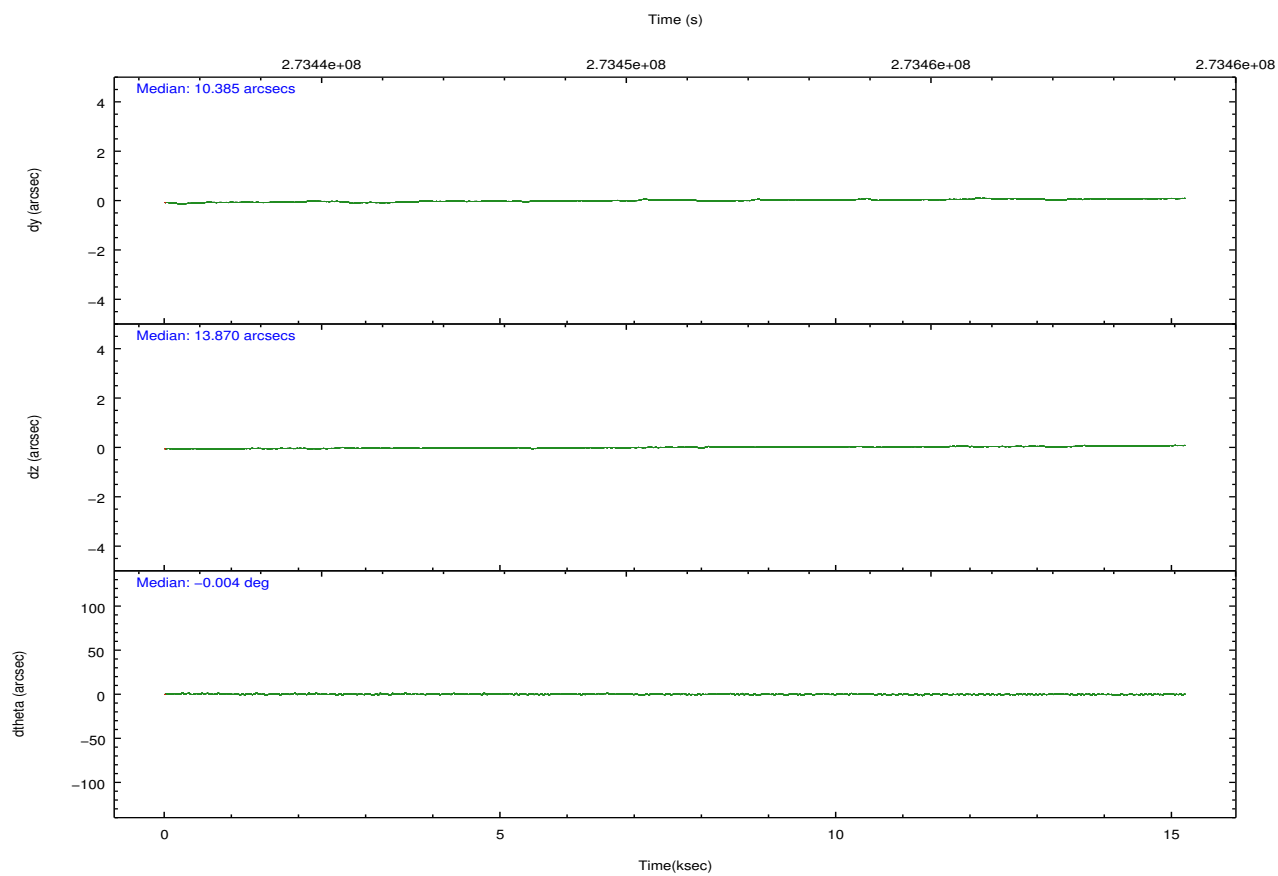
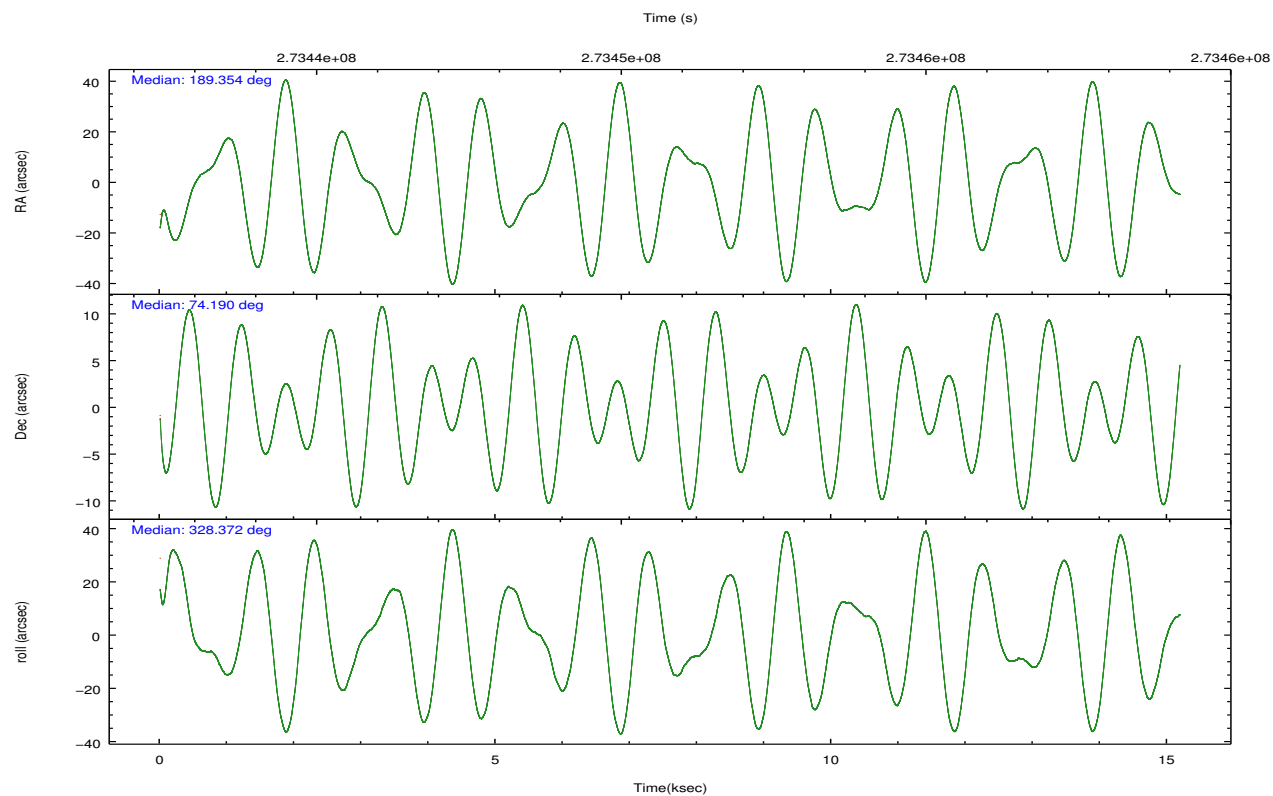
	ccd 7
grade 0 events	1267
	4%
grade 1 events	36
	0%
grade 2 events	2466
	9%
grade 3 events	1605
	5%
grade 4 events	1602
	5%
grade 5 events	2501
	9%
grade 6 events	5624
	20%
grade 7 events	11748
	43%

2.2 Compared Parameters

Parameter	Planned	Actual	Parameter	Planned	Actual
Instrument	ACIS	ACIS	Obspar format version number	7	7
Detector	ACIS-7	ACIS-7	Obspar file type	PREDICTED	ACTUAL
Grating	NONE	NONE	Obspar update status	NONE	UPDATED
Data mode	VFAINT	VFAINT	Number of optional ACIS chips dropped	0	0
Observation mode	POINTING	POINTING	On-chip summing requested	N	N
[deg] Pointing RA	189.254883	189.3548080926979	Subarray requested	CUSTOM	1/8
[deg] Pointing Dec	74.190241	74.18984237304636	Subarray start row	449	449
[deg] Pointing Roll	328.316035	328.3765123134125	Subarray row count	128	128
[mm] SIM focus pos	-0.684267	-0.6828225247311905	Alternating exposures requested	N	N
[mm] SIM defocus	0	0.001444936568705701	[s] Primary exposure time	0.000000	0.4
[mm] SIM translation stage pos	-190.132523	-190.1425803651734			
[mm] SIM translation stage offset	0	0.01005778216563158			
[s] Observation start time (MET)	273443400.184000	273441677.9196			
Observation start date	2006-08-31T20:28:55	2006-08-31T20:01:17			
[s] Observation end time (MET)	273458401.184000	273458624.24539			
Observation end date	2006-09-01T00:38:56	2006-09-01T00:43:44			
Read mode	TIMED	TIMED			

2.3 Aspect



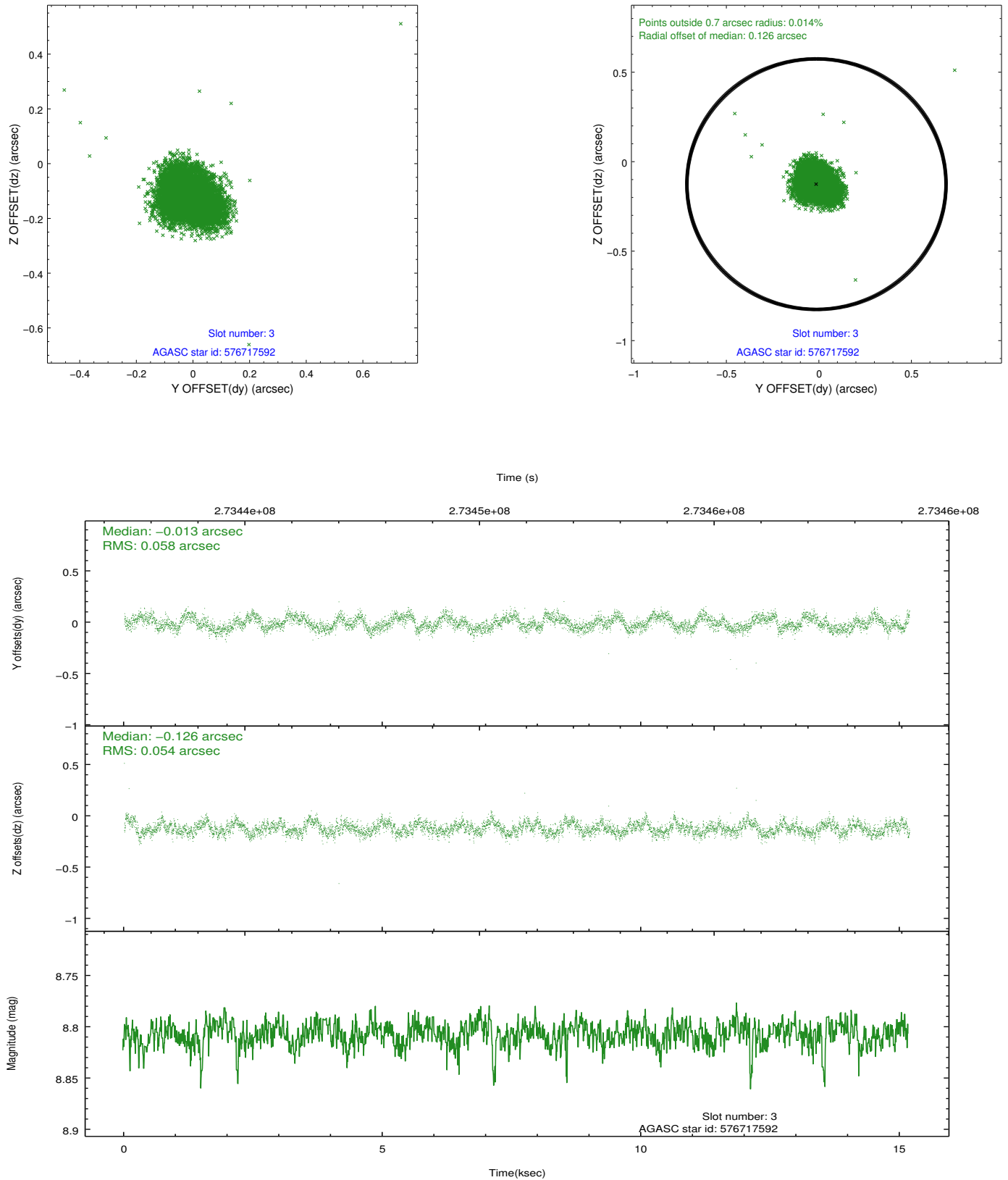


Slot Statistics

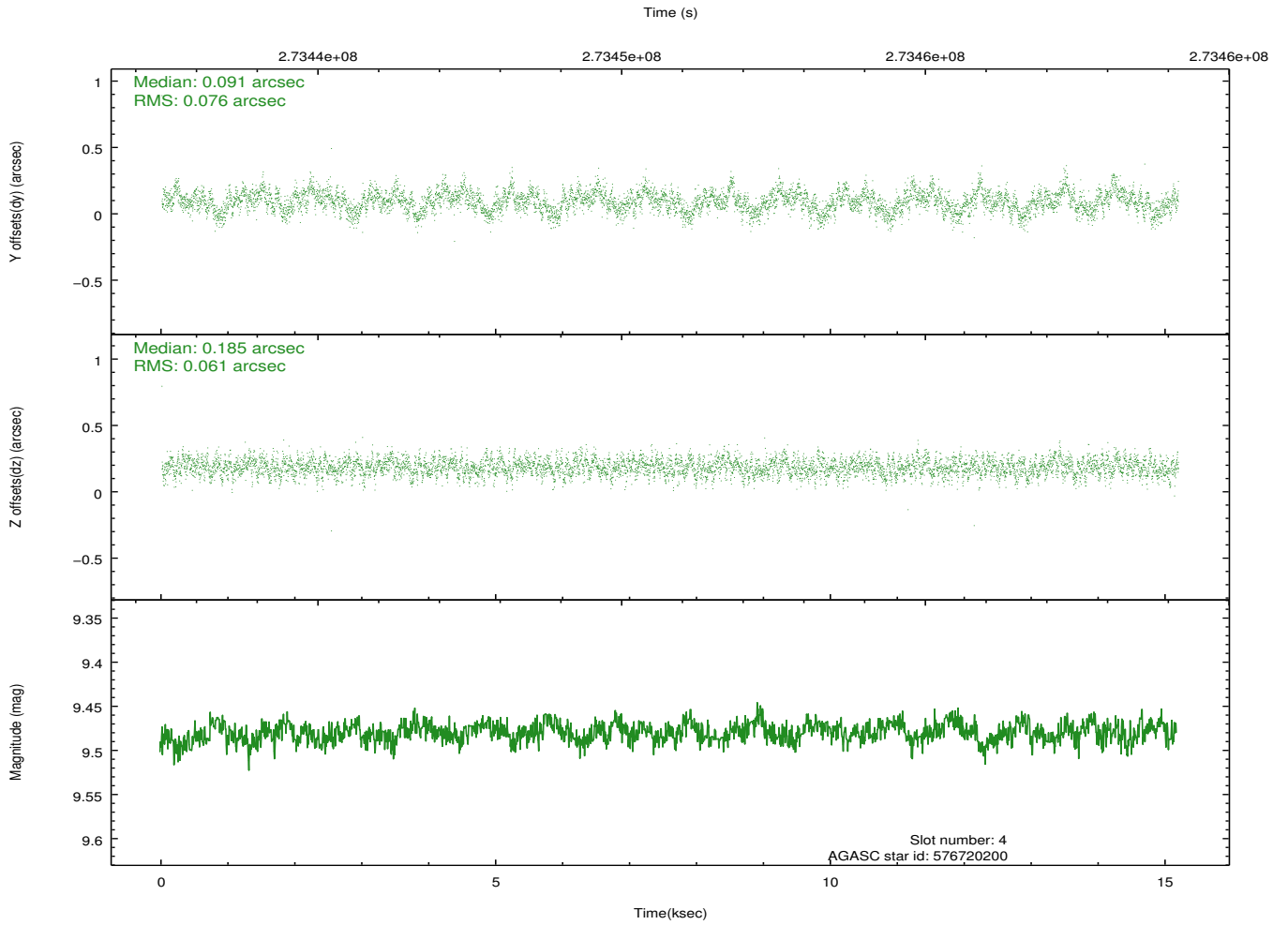
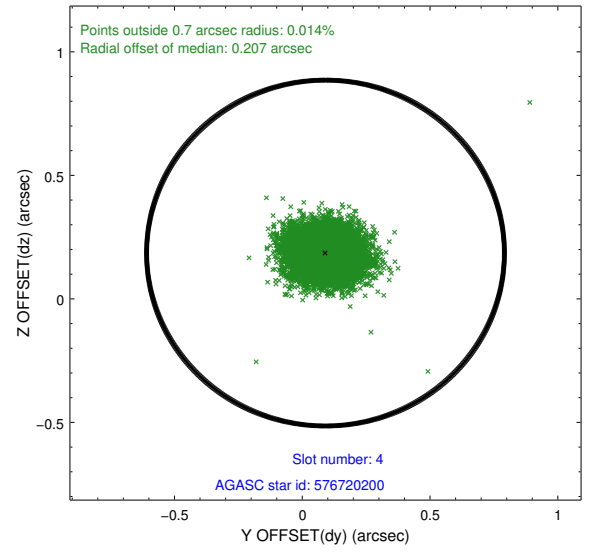
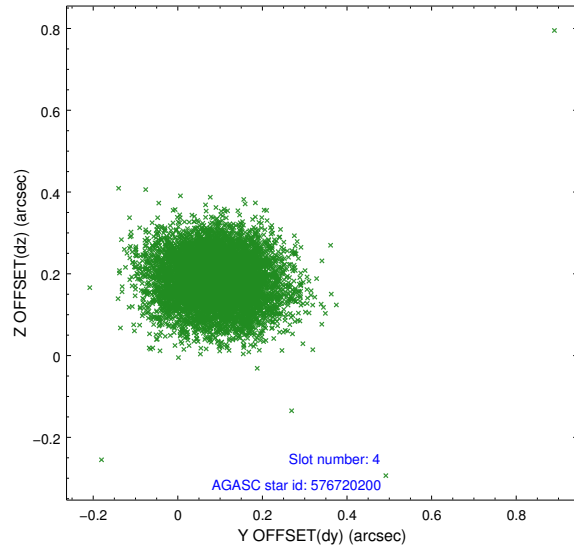
slot	status	id	mag	n_pts	med_dy	med_dz	dr1	dr2	ra	dec	mean_y	mean_z
0	FID	ACIS-S-2	7.10	3702	-0.081	-0.046	0.006	0.010	0.000000	0.000000	-763.32	-1735.21
1	FID	ACIS-S-4	7.21	3704	0.081	0.045	0.006	0.010	0.000000	0.000000	2150.00	173.04
2	FID	ACIS-S-6	7.35	3704	-0.029	0.008	0.007	0.012	0.000000	0.000000	399.11	810.75
3	GUIDE	576717592	8.81	7406	-0.013	-0.126	0.083	0.129	188.029943	74.489547	-1576.06	307.07
4	GUIDE	576720200	9.48	7401	0.091	0.185	0.103	0.168	187.836378	74.278525	-1352.51	-441.83
5	GUIDE	576727904	9.46	7359	-0.039	0.123	0.116	0.181	189.525199	73.518884	1504.47	-1910.87
6	GUIDE	577634968	9.45	7406	-0.011	-0.044	0.148	0.261	192.430551	74.335233	2308.80	2135.01
7	GUIDE	576717256	9.37	7401	-0.044	-0.147	0.121	0.187	191.223751	74.615515	779.77	2317.11

2.4 Star Slots

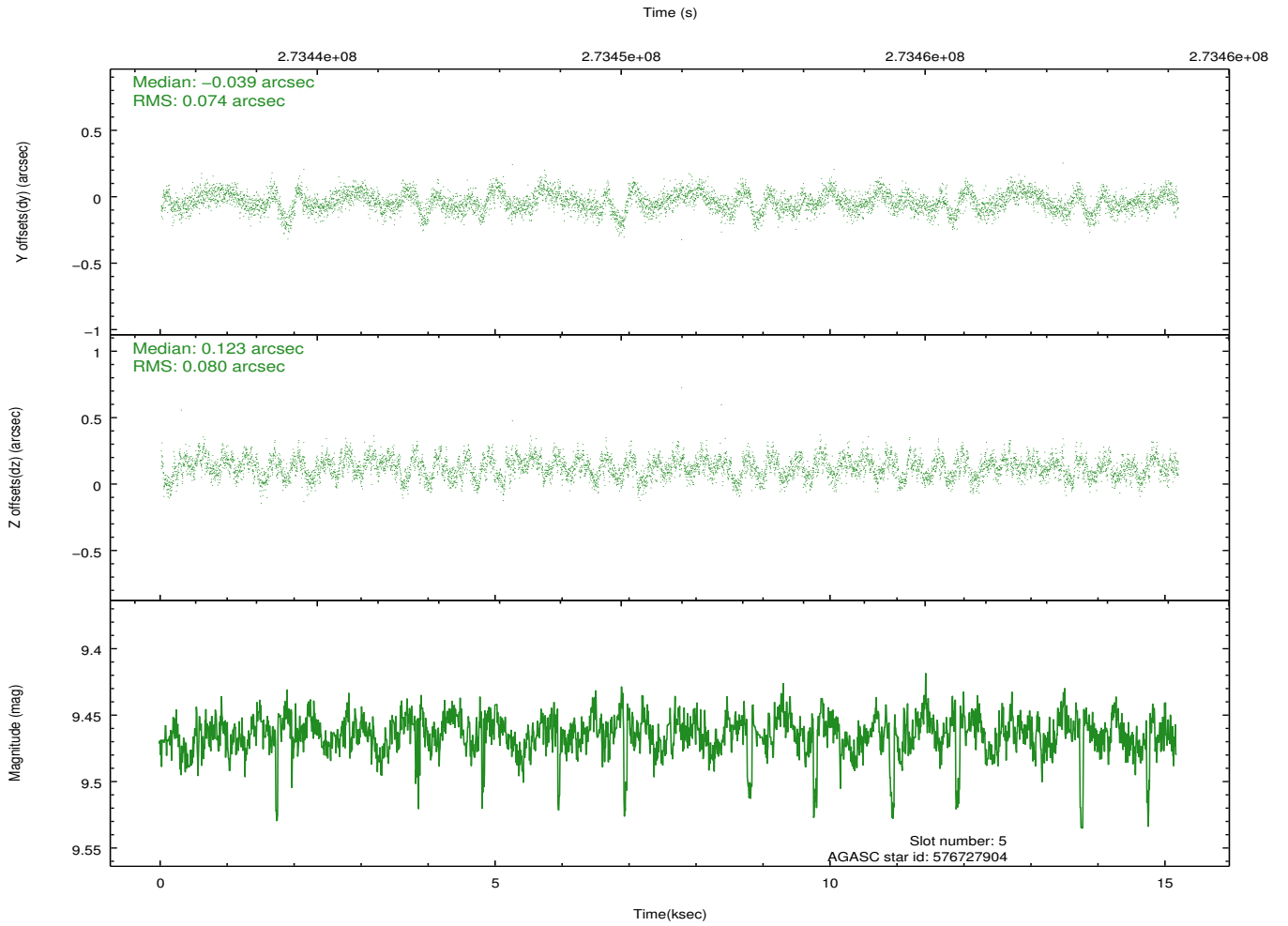
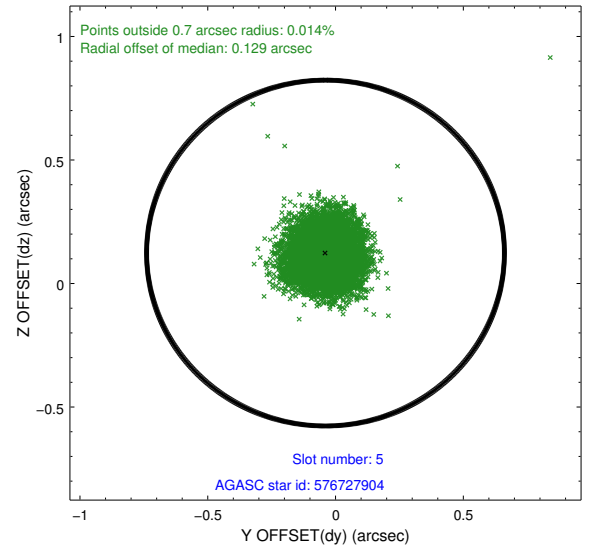
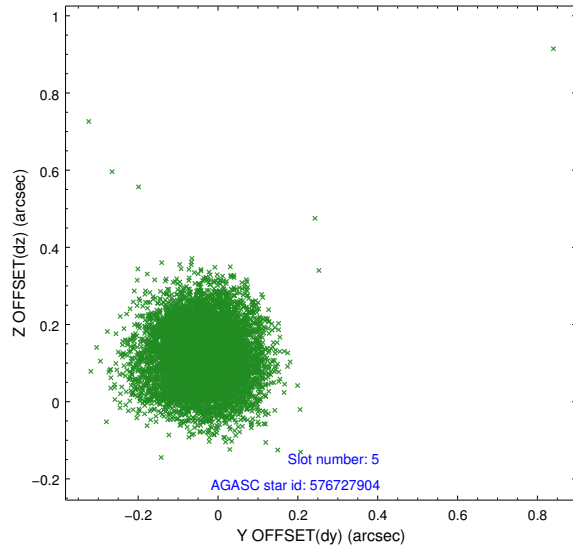
2.4.1 Slot 3



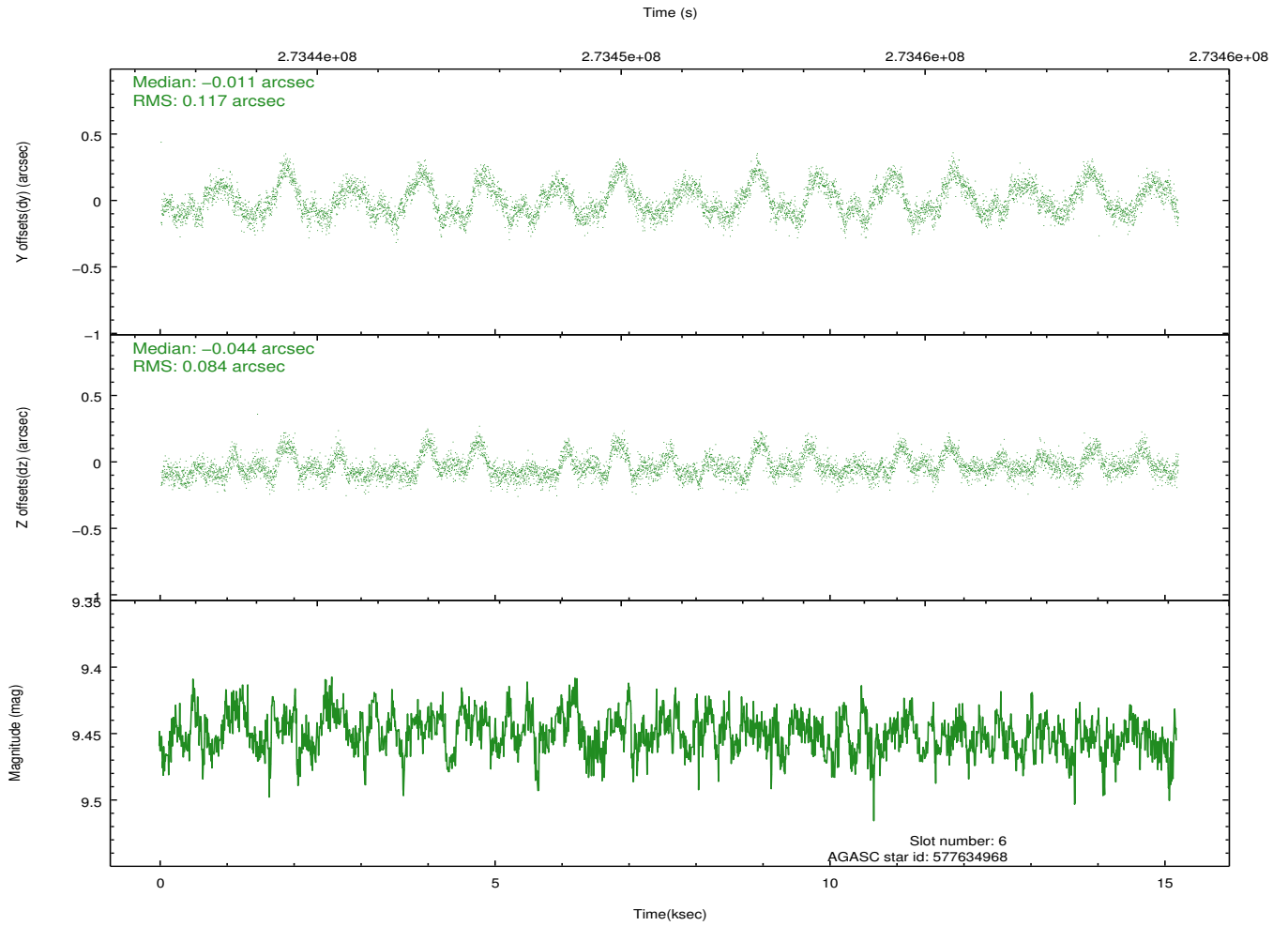
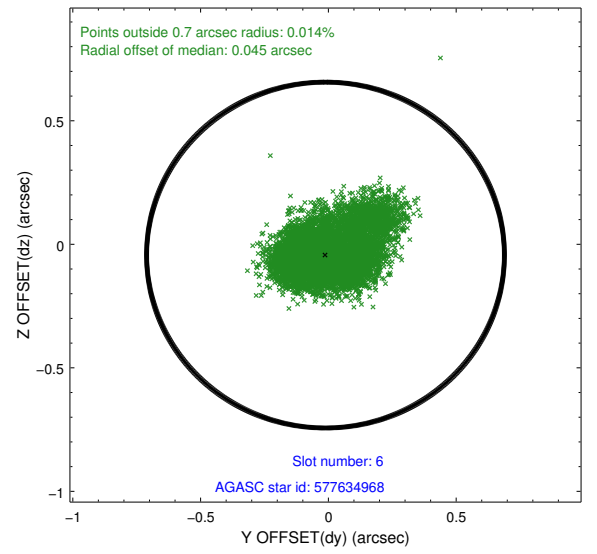
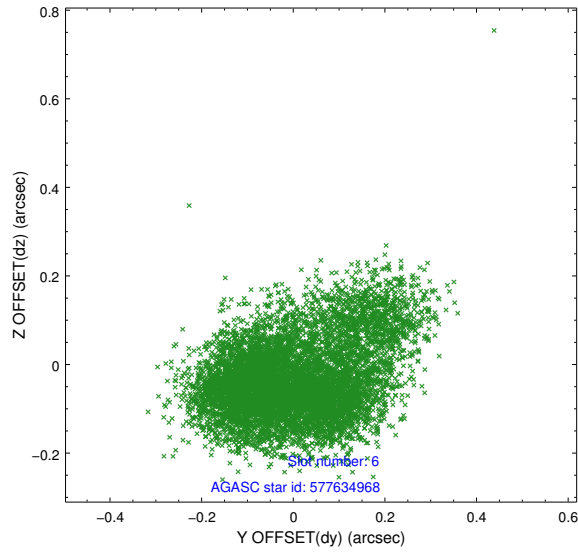
2.4.2 Slot 4



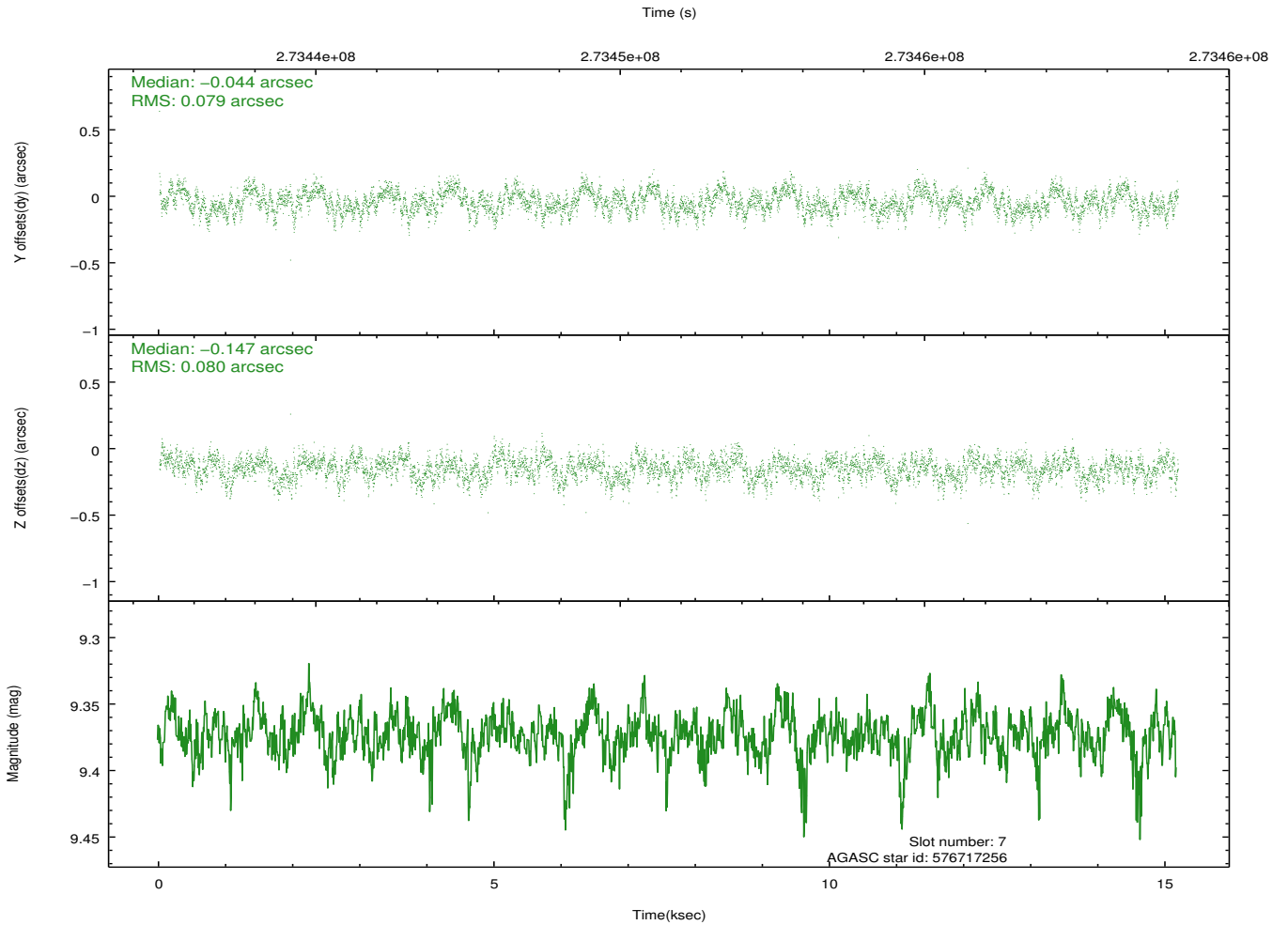
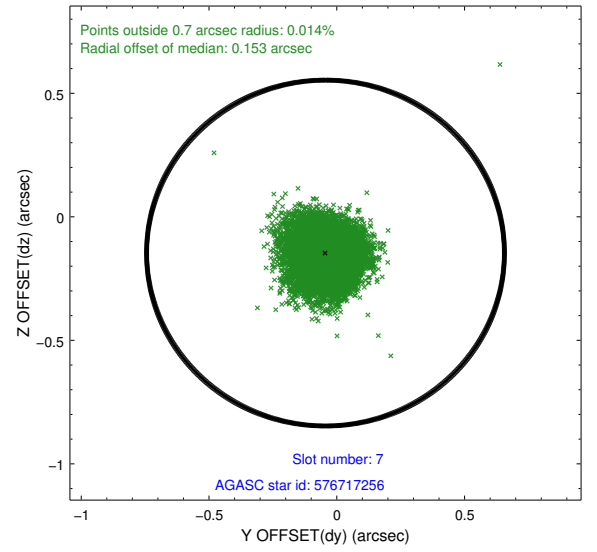
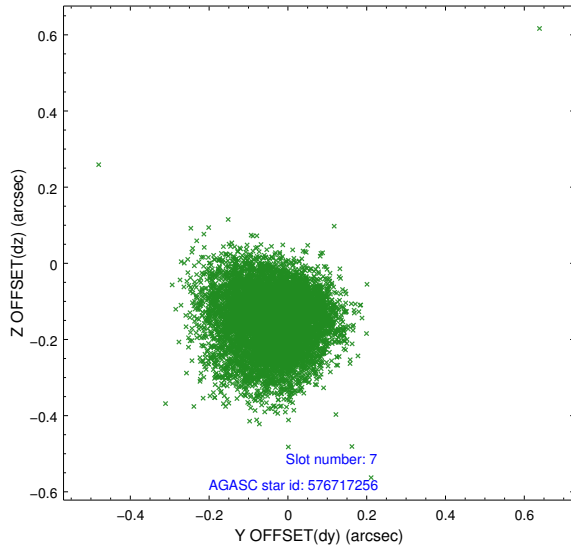
2.4.3 Slot 5



2.4.4 Slot 6

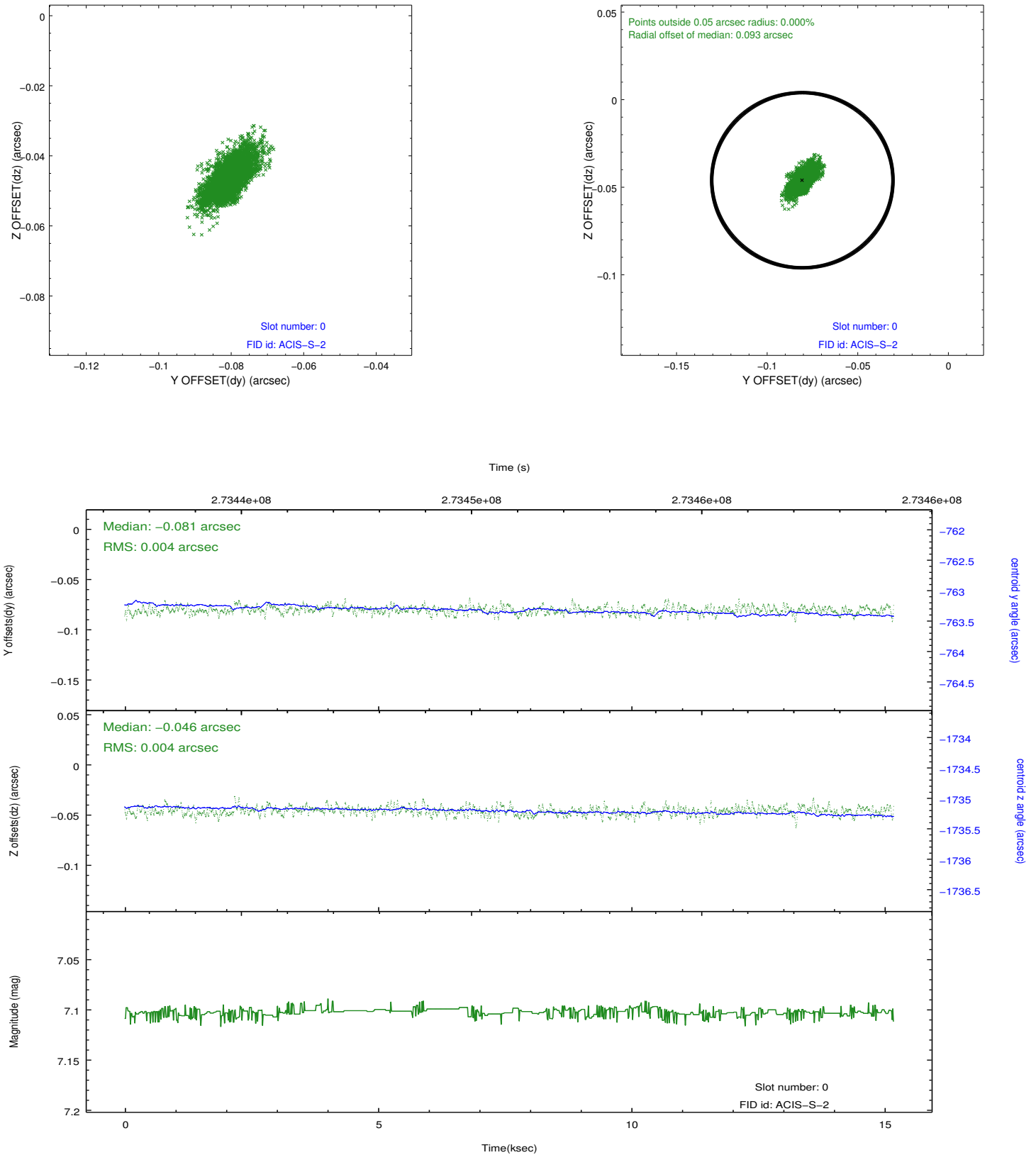


2.4.5 Slot 7

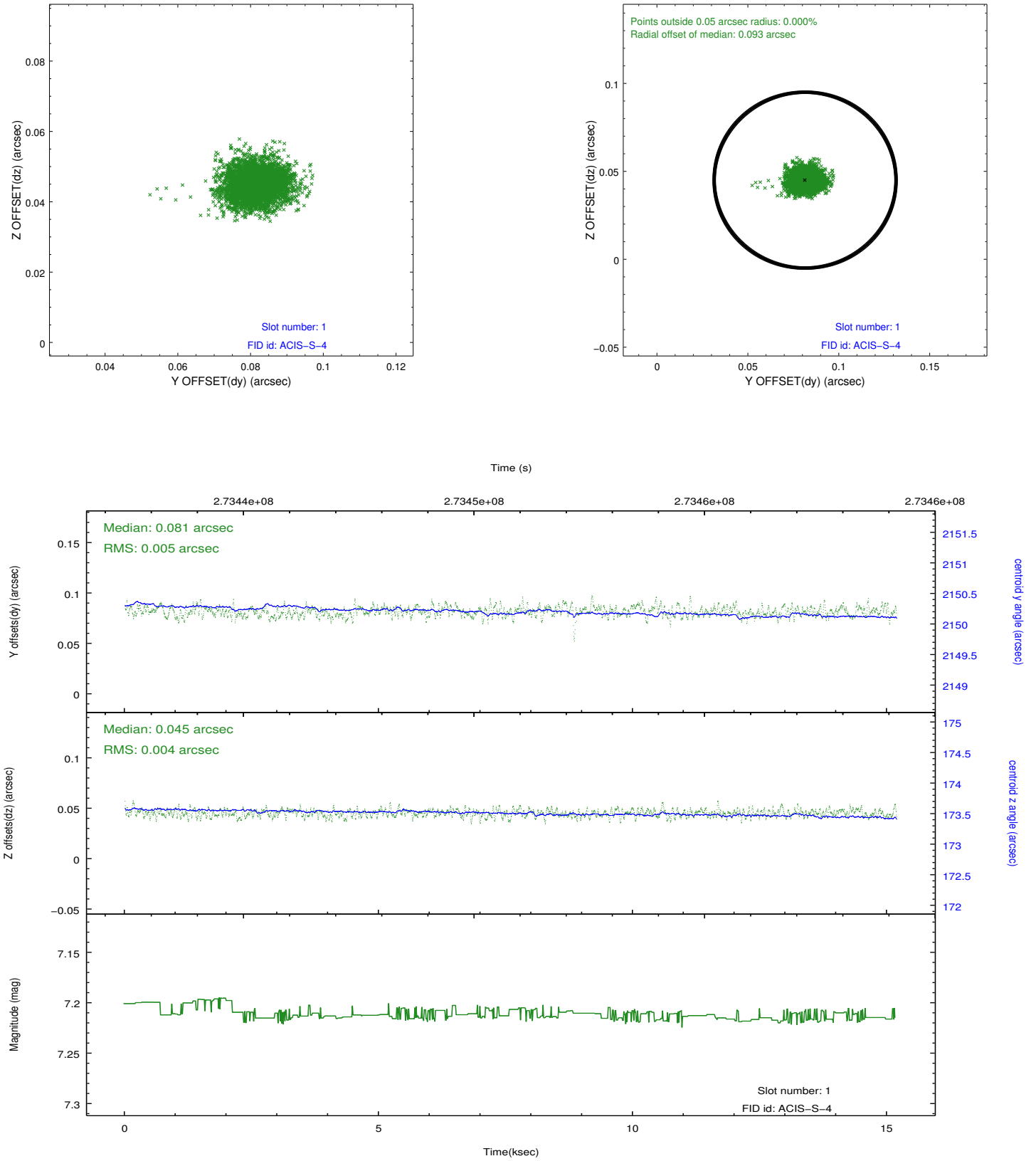


2.5 FID Slots

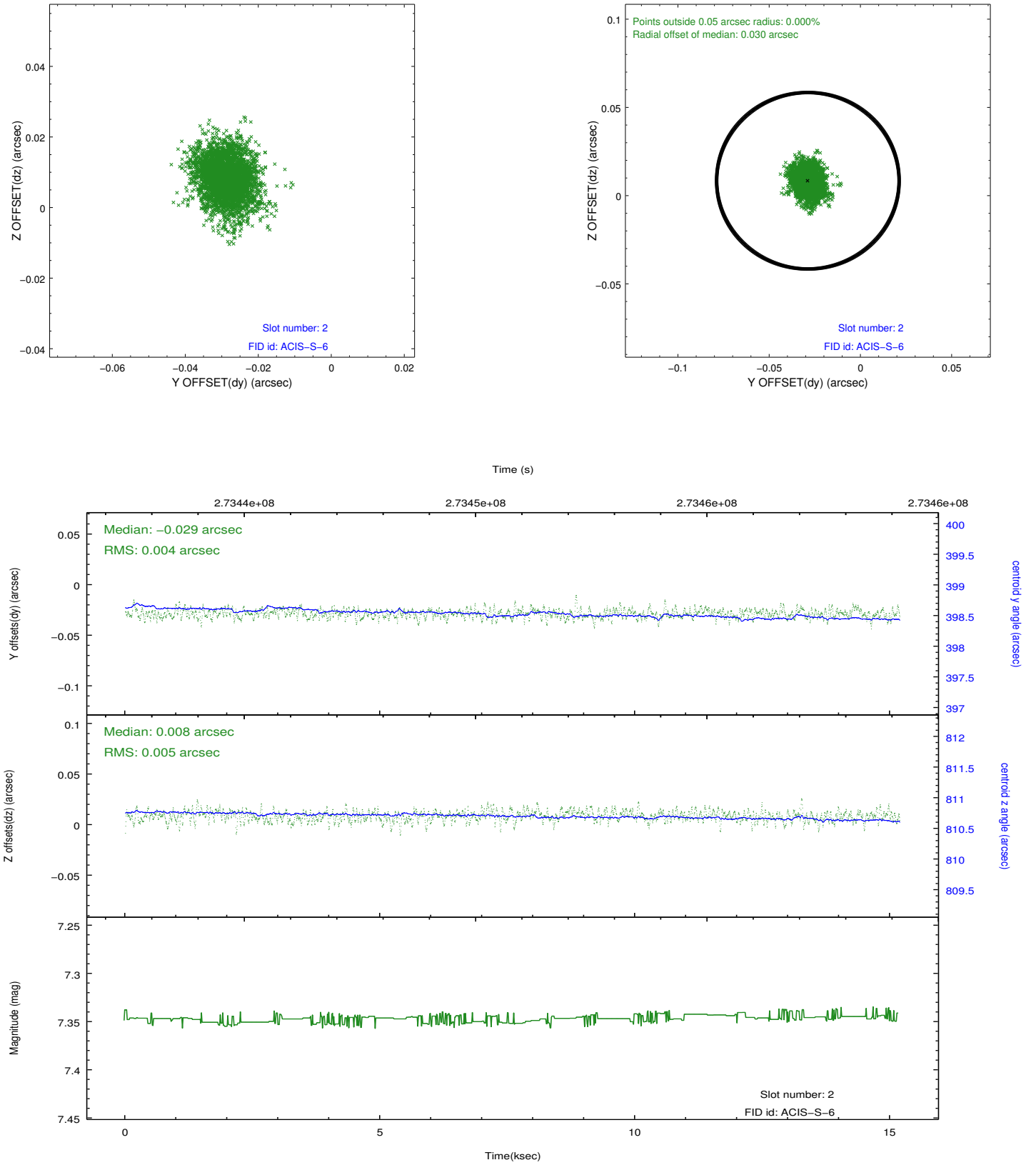
2.5.1 Slot 0



2.5.2 Slot 1



2.5.3 Slot 2



A Summary

A.1 Status

V&V Scientist	Jen Lauer
V&V Date (YYYY-MM-DD)	2012.04.09
V&V Edition	1
V&V Disposition and Status	OK
V&V Charge Time	15.185199

A.2 Comments