

V&V Reference Report

L2 ASCDS Version : 8.4.3.1

Observation 6780 - L2 Version 2
Chandra X-Ray Center

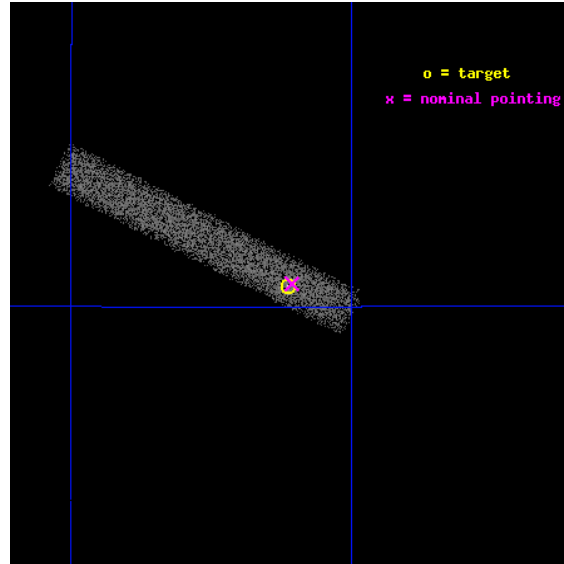
L2 Processing Date : Mar 30 2012

Contents

1	Front	2
2	OBI	3
2.1	OBI	3
2.1.1	Images	3
2.1.2	Bias	3
2.1.3	Parameters	4
2.1.4	Events	4
2.2	Compared Parameters	5
2.3	Aspect	6
2.4	Star Slots	9
2.4.1	Slot 3	9
2.4.2	Slot 4	10
2.4.3	Slot 5	11
2.4.4	Slot 6	12
2.4.5	Slot 7	13
2.5	FID Slots	14
2.5.1	Slot 0	14
2.5.2	Slot 1	15
2.5.3	Slot 2	16
A	Summary	17
A.1	Status	17
A.2	Comments	17

1 Front

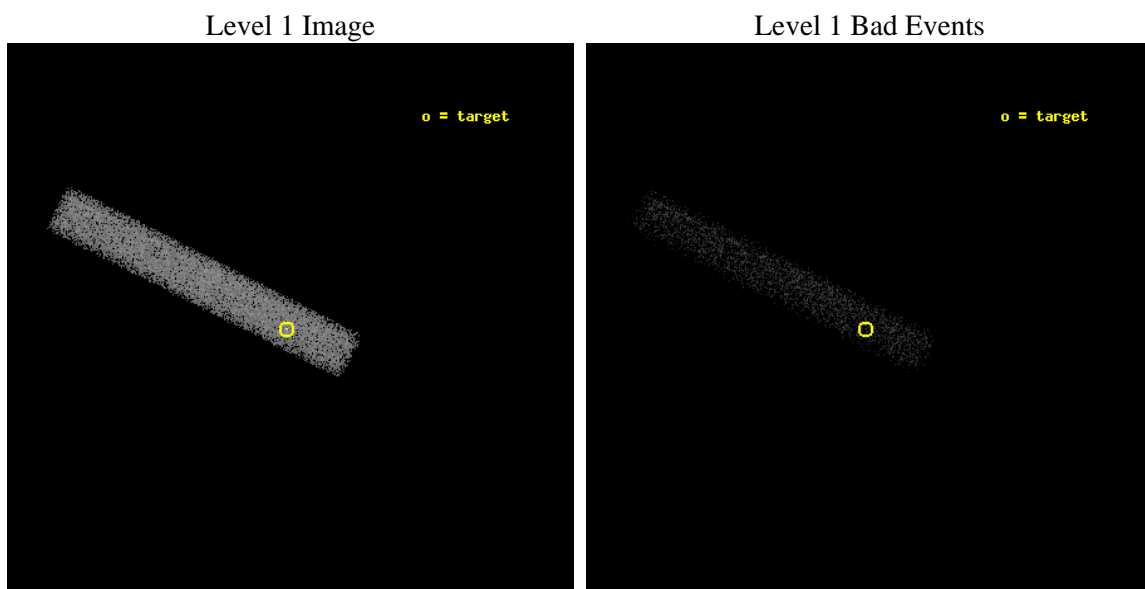
seq_num	701198	Sequence number
obs_id	6780	Observation id
title	Active Galactic Nuclei in nearby galaxies: a new view of the origin of the radio-loud radio-quiet dichotomy?	Proposal title
observer	Dr. Alessandro Capetti	Principal investigator
object	UGC6860	Source name
dtcycle	0	
cycle	P	events from which exps? Prim/Second/Both
ra_targ	178.307083	Observer's specified target RA [deg]
dec_targ	60.675556	Observer's specified target Dec [deg]
ra_nom	178.30331769791	Nominal RA [deg]
dec_nom	60.676479130182	Nominal Dec [deg]
roll_nom	206.6954776226	Nominal Roll [deg]
revision	2	Processing version of data
ontime	15171.200226039	Sum of GTIs [s]
liveltime	13759.477803409	Livetime [s]
ontime7	15171.200226039	Sum of GTIs [s]
l2events	11003	Number of level 2 events



2 OBI

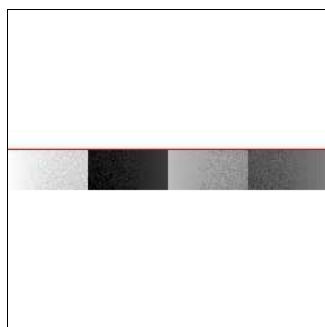
2.1 OBI

2.1.1 Images



2.1.2 Bias

Chip 7



2.1.3 Parameters

obi_num	0	Obi number	sched_exp_time	15000.000000	[s] Scheduled observation exposure time
ascdsver	8.4.3	Processing system revision	ontime	15171.200226039	Sum of GTIs [s]
caldsver	4.4.8	 	ontime7	15171.200226039	Sum of GTIs [s]
date	2012-03-30T05:14:25	Date and time of file creation	l1events	26116	Number of level 1 events
revision	2	Processing version of data			

2.1.4 Events

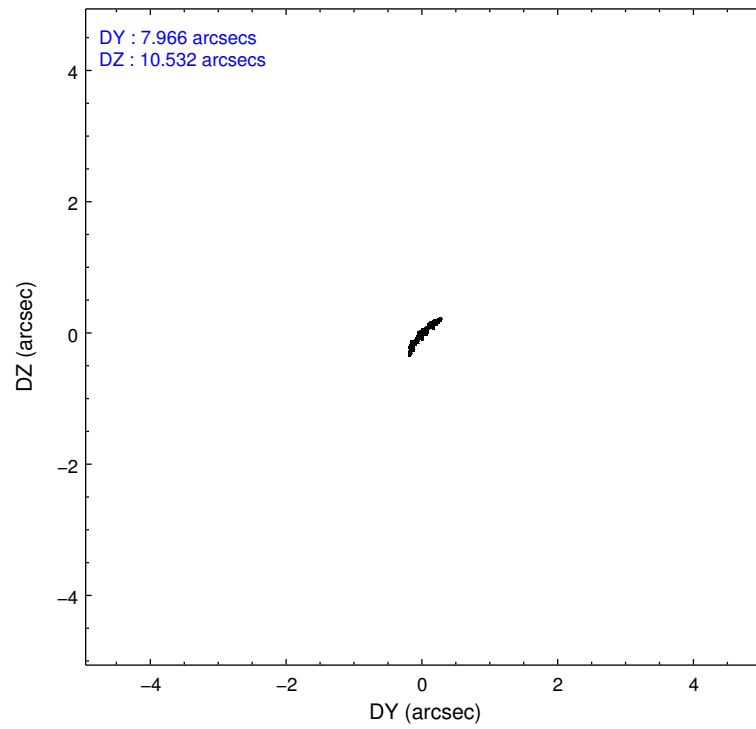
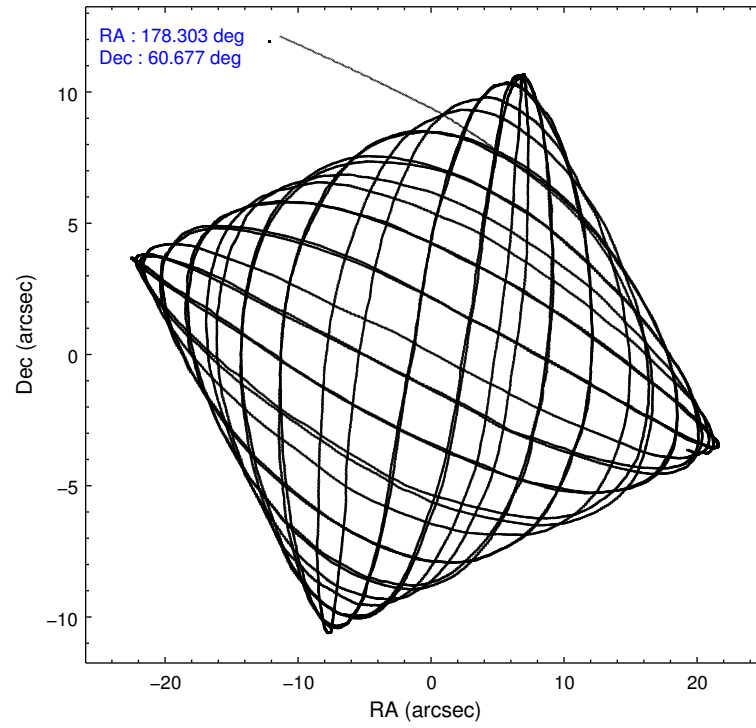
	ccd 7
level 1 events	26116
rejected events	14676
rejected %	56%

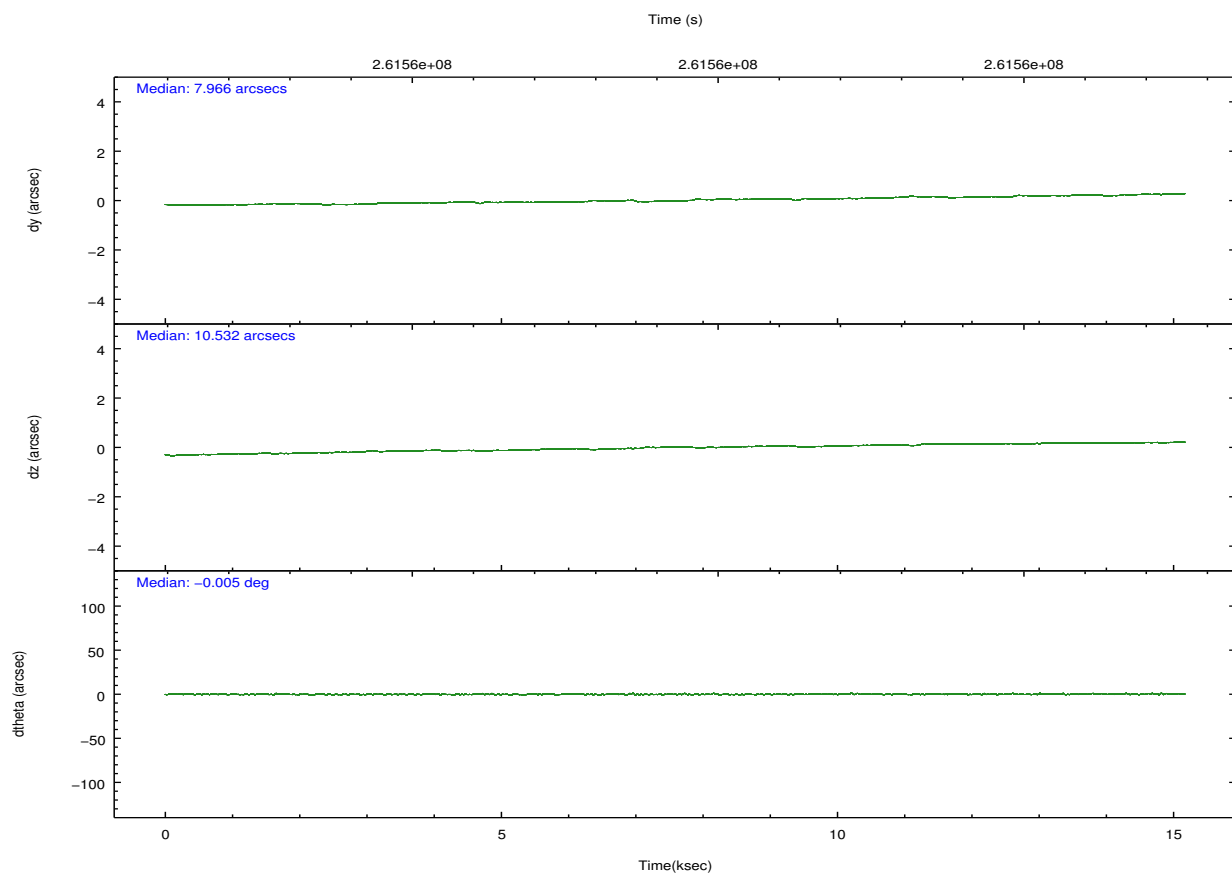
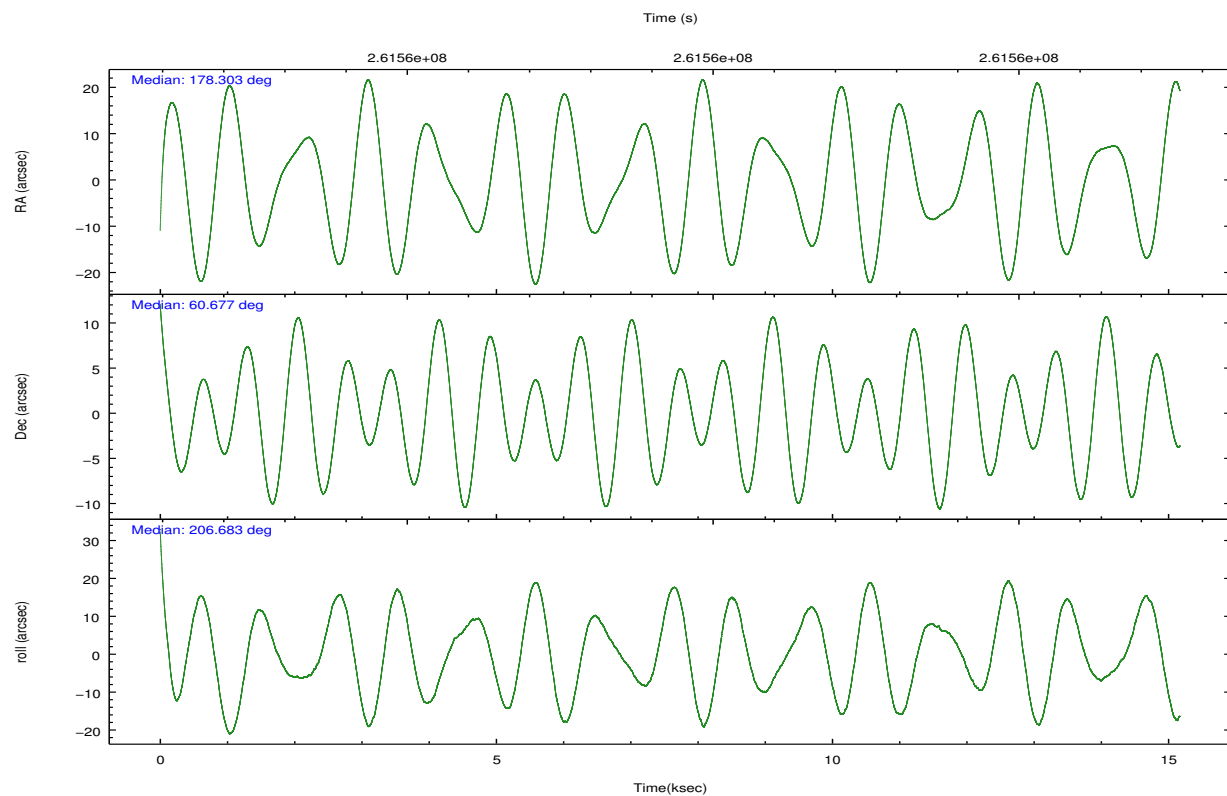
	ccd 7
grade 0 events	1370
	5%
grade 1 events	43
	0%
grade 2 events	2422
	9%
grade 3 events	1629
	6%
grade 4 events	1531
	5%
grade 5 events	2420
	9%
grade 6 events	5464
	20%
grade 7 events	11237
	43%

2.2 Compared Parameters

Parameter	Planned	Actual	Parameter	Planned	Actual
Instrument	ACIS	ACIS	Obspar format version number	7	7
Detector	ACIS-7	ACIS-7	Obspar file type	PREDICTED	ACTUAL
Grating	NONE	NONE	Obspar update status	NONE	UPDATED
Data mode	VFAINT	VFAINT	Number of optional ACIS chips dropped	0	0
Observation mode	POINTING	POINTING	On-chip summing requested	N	N
[deg] Pointing RA	178.333192	178.3033176979134	Subarray requested	CUSTOM	1/8
[deg] Pointing Dec	60.699448	60.6764791301823	Subarray start row	449	449
[deg] Pointing Roll	206.512791	206.6954776225979	Subarray row count	128	128
[mm] SIM focus pos	-0.684267	-0.6828225247311905	Alternating exposures requested	N	N
[mm] SIM defocus	0	0.001444936568705701	[s] Primary exposure time	0.000000	0.4
[mm] SIM translation stage pos	-190.132523	-190.1425803651734			
[mm] SIM translation stage offset	0	0.01005778216563158			
[s] Observation start time (MET)	261551881.184000	261550333.07574			
Observation start date	2006-04-16T05:16:56	2006-04-16T04:52:13			
[s] Observation end time (MET)	261566881.184000	261568307.98908			
Observation end date	2006-04-16T09:26:56	2006-04-16T09:51:47			
Read mode	TIMED	TIMED			

2.3 Aspect



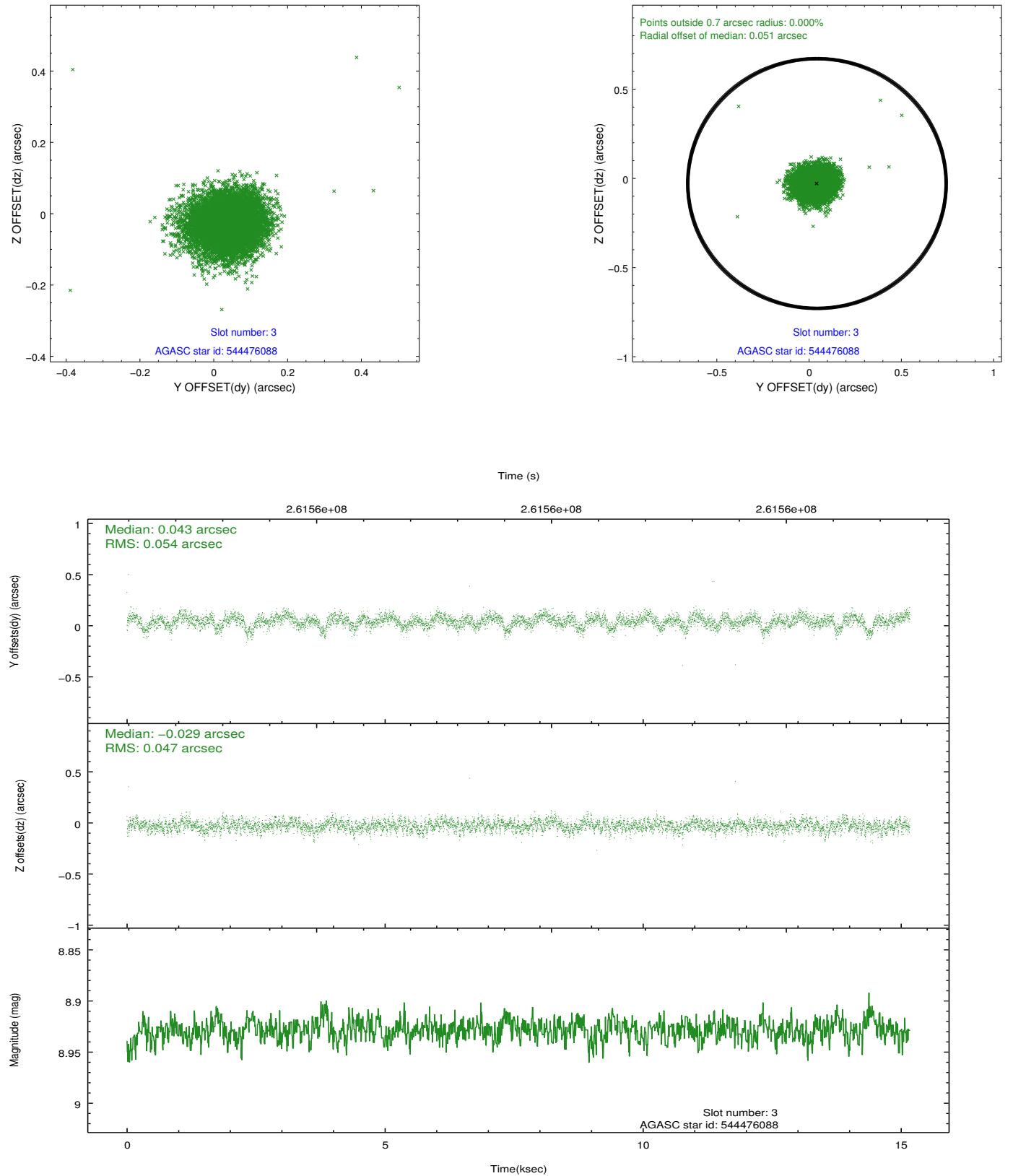


Slot Statistics

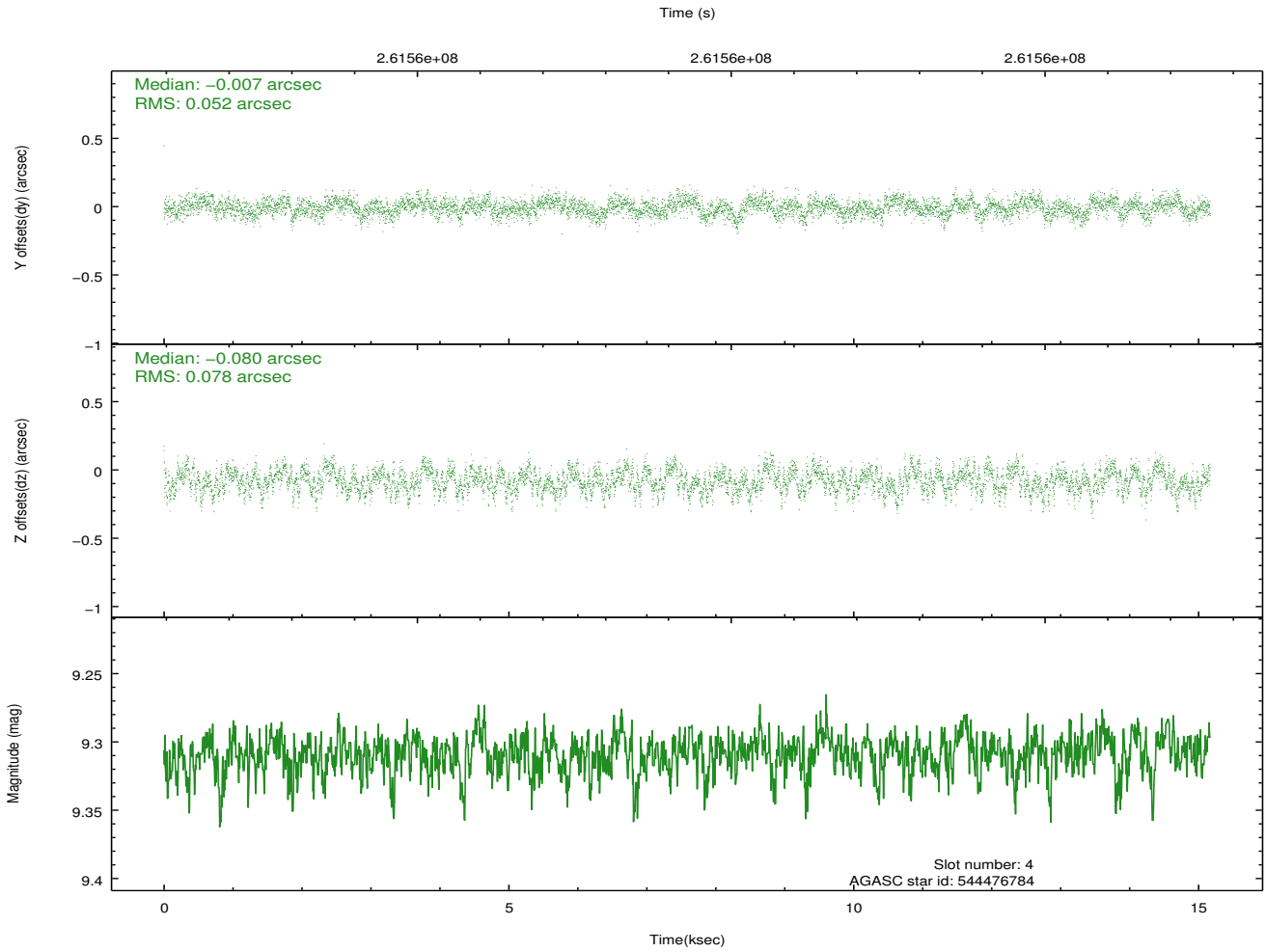
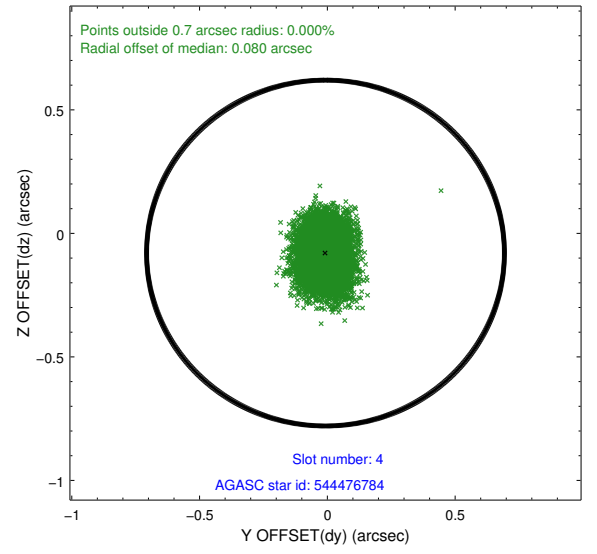
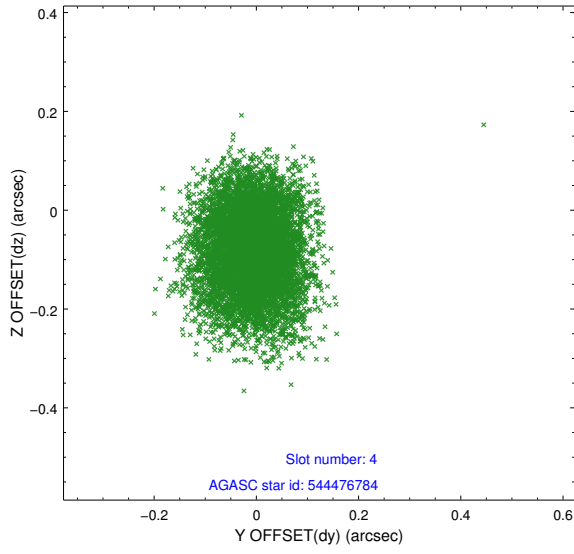
slot	status	id	mag	n_pts	med_dy	med_dz	dr1	dr2	ra	dec	mean_y	mean_z
0	FID	ACIS-S-2	7.11	3701	-0.050	-0.029	0.007	0.011	0.000000	0.000000	-760.76	-1731.77
1	FID	ACIS-S-4	7.21	3700	0.137	0.032	0.009	0.015	0.000000	0.000000	2152.52	176.55
2	FID	ACIS-S-5	7.23	3701	-0.119	0.006	0.010	0.017	0.000000	0.000000	-1813.34	170.43
3	GUIDE	544476088	8.93	7400	0.043	-0.029	0.074	0.121	178.580350	61.040674	-933.68	-907.47
4	GUIDE	544476784	9.31	7396	-0.007	-0.080	0.099	0.163	177.669195	61.229837	175.33	-2227.14
5	GUIDE	544480176	9.12	7397	0.044	0.096	0.085	0.135	179.060814	61.018062	-1650.21	-466.22
6	GUIDE	544481720	8.66	7391	-0.023	0.060	0.074	0.124	179.183884	60.522144	-1068.12	1235.33
7	GUIDE	544481768	7.33	7398	-0.050	-0.050	0.061	0.100	179.454019	60.461508	-1405.44	1639.54

2.4 Star Slots

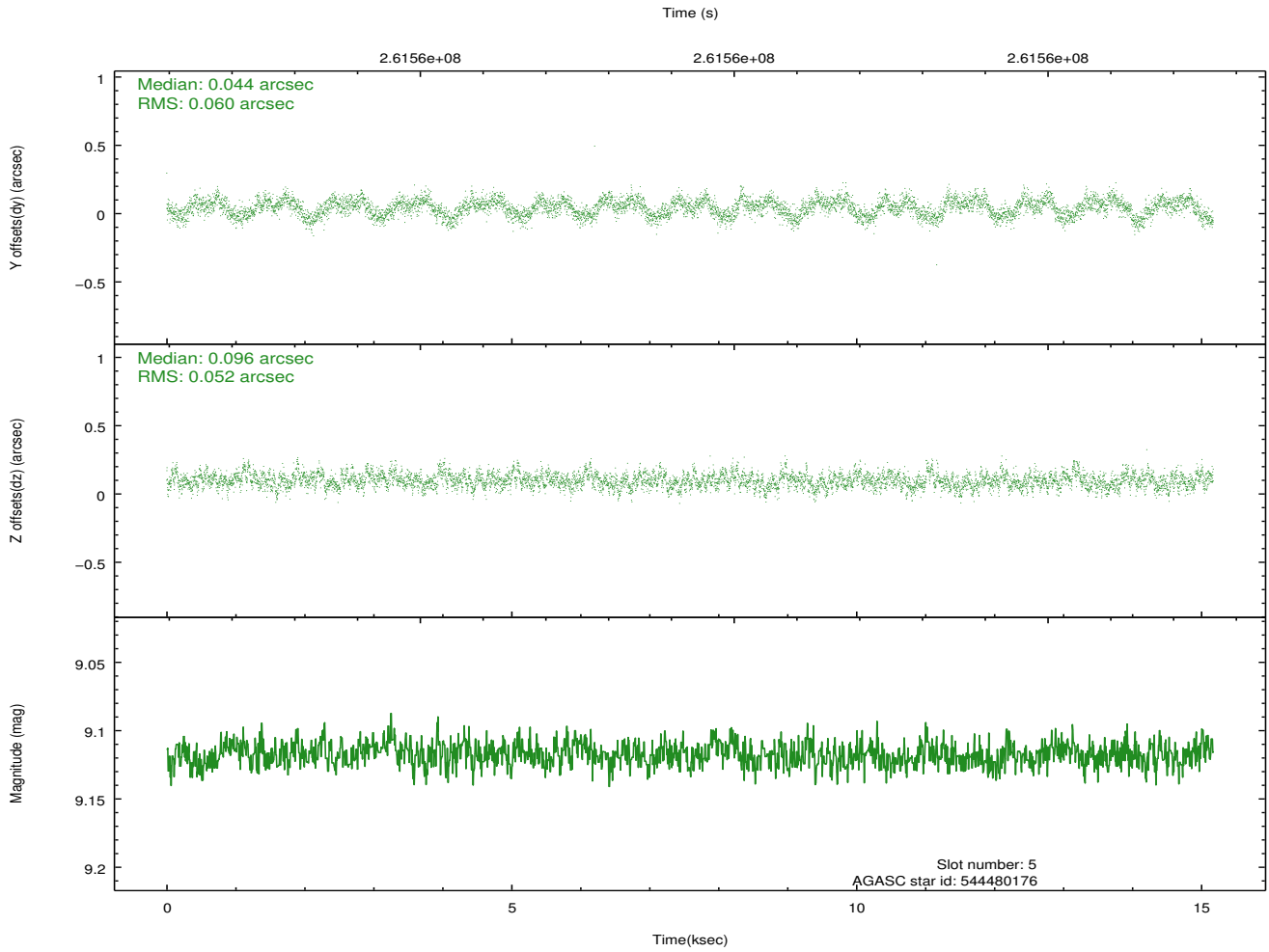
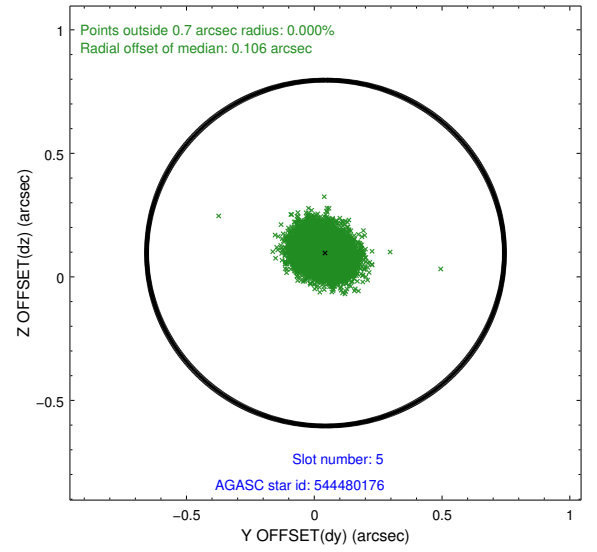
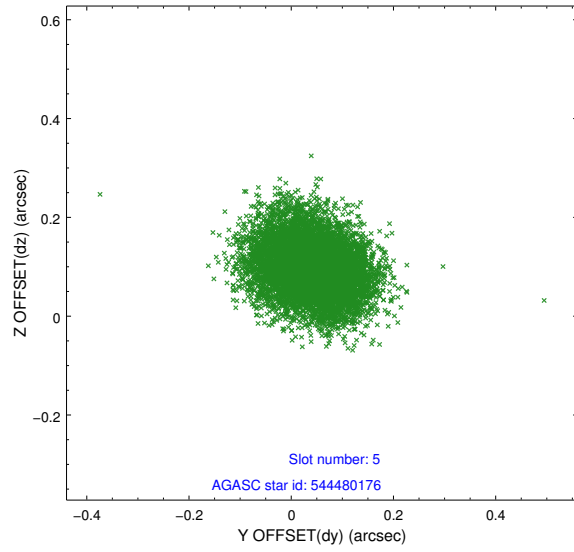
2.4.1 Slot 3



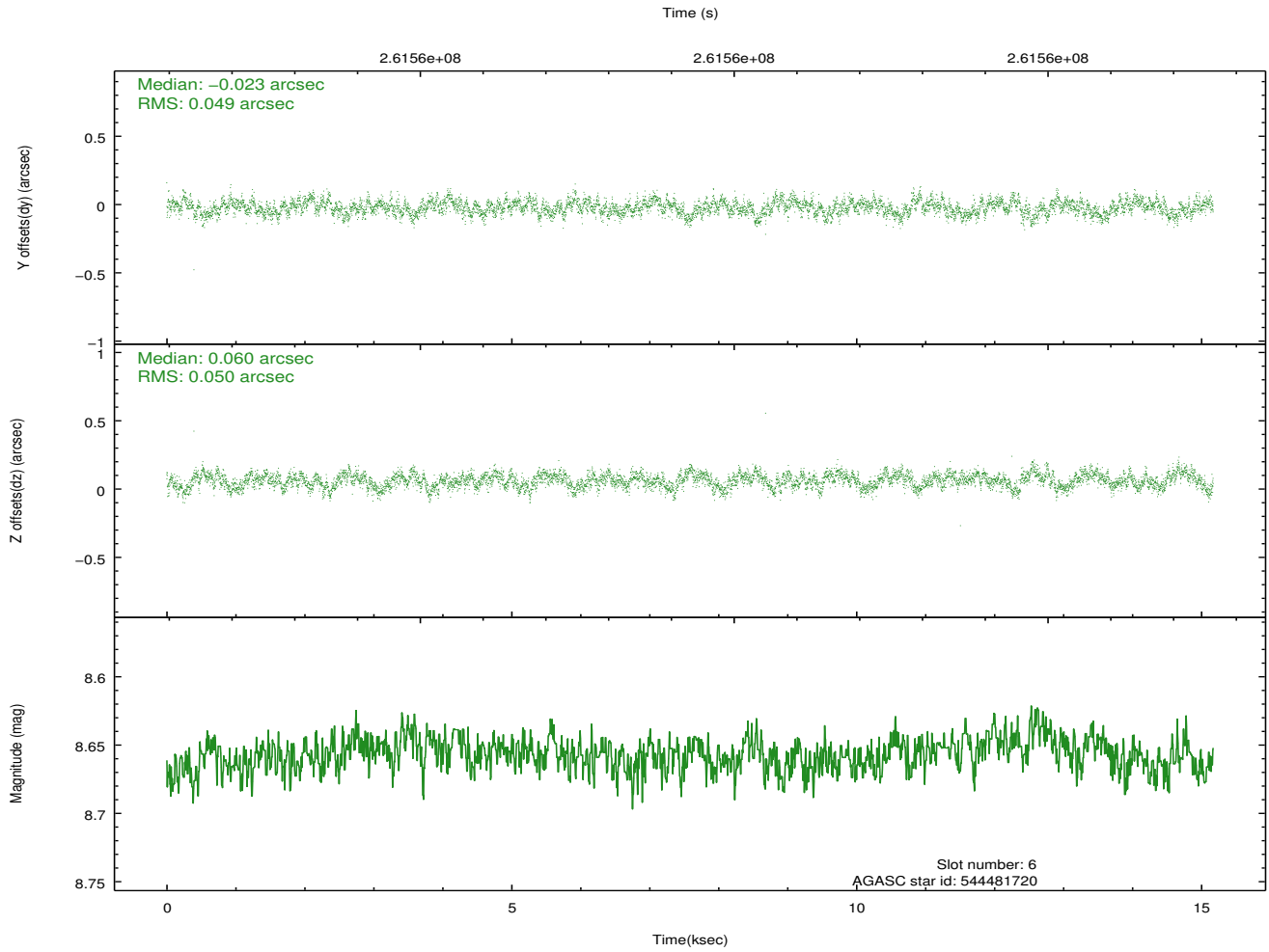
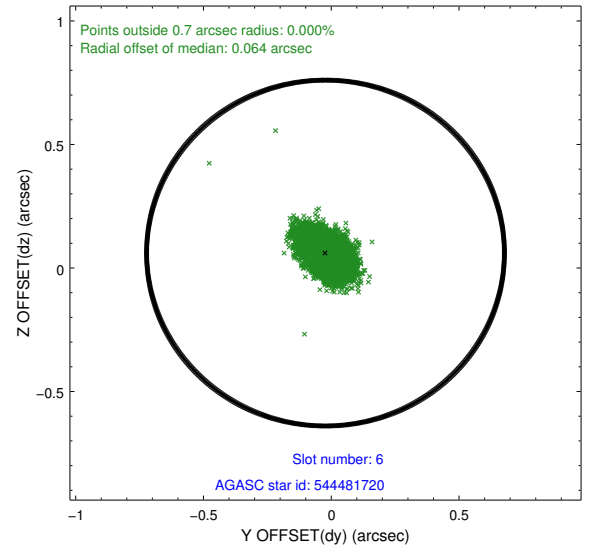
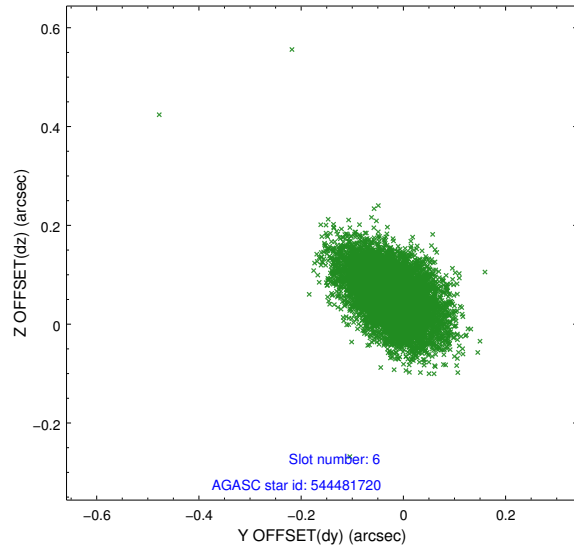
2.4.2 Slot 4



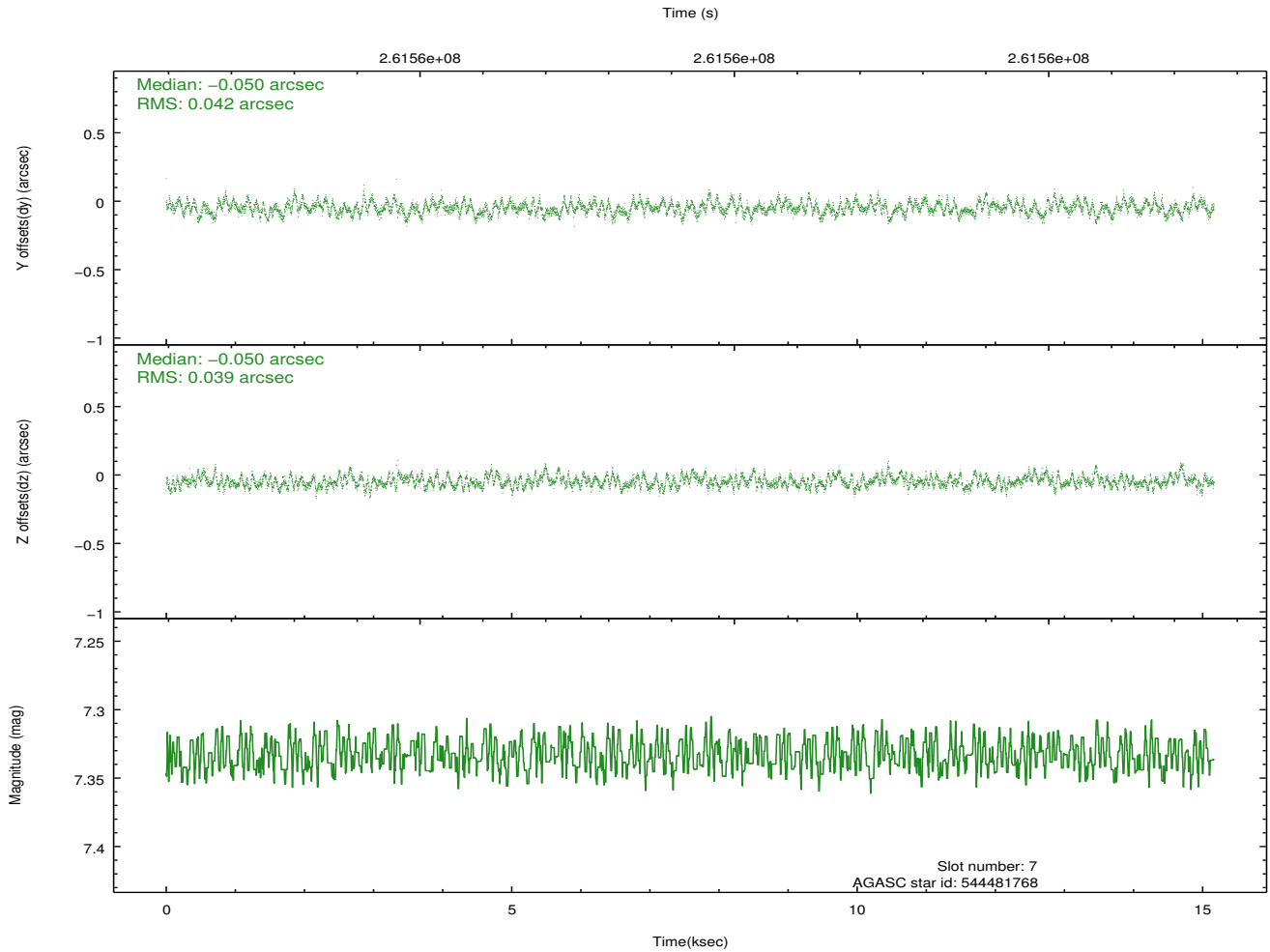
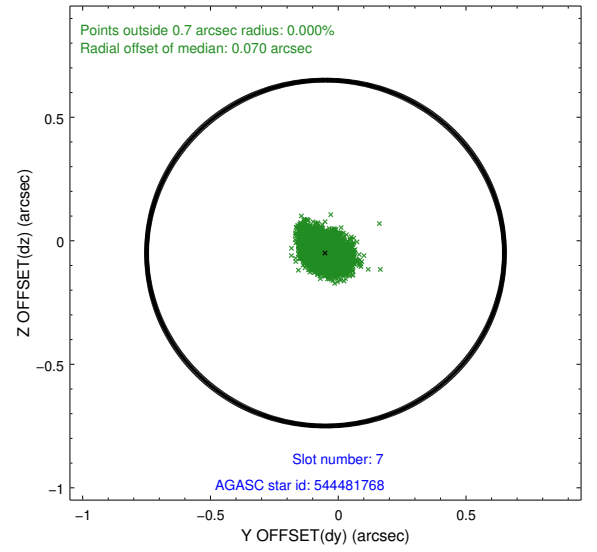
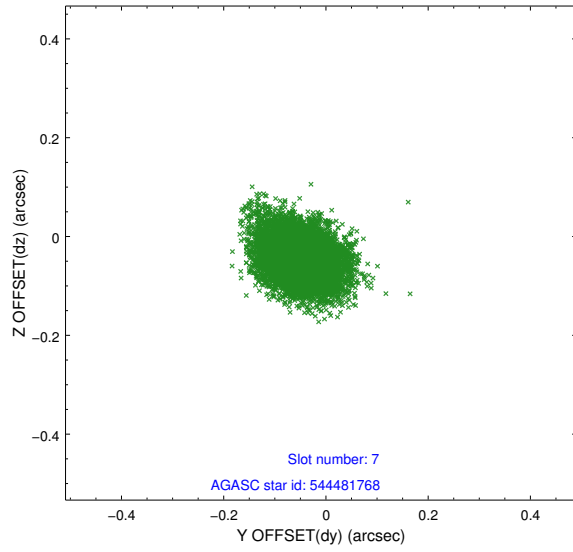
2.4.3 Slot 5



2.4.4 Slot 6

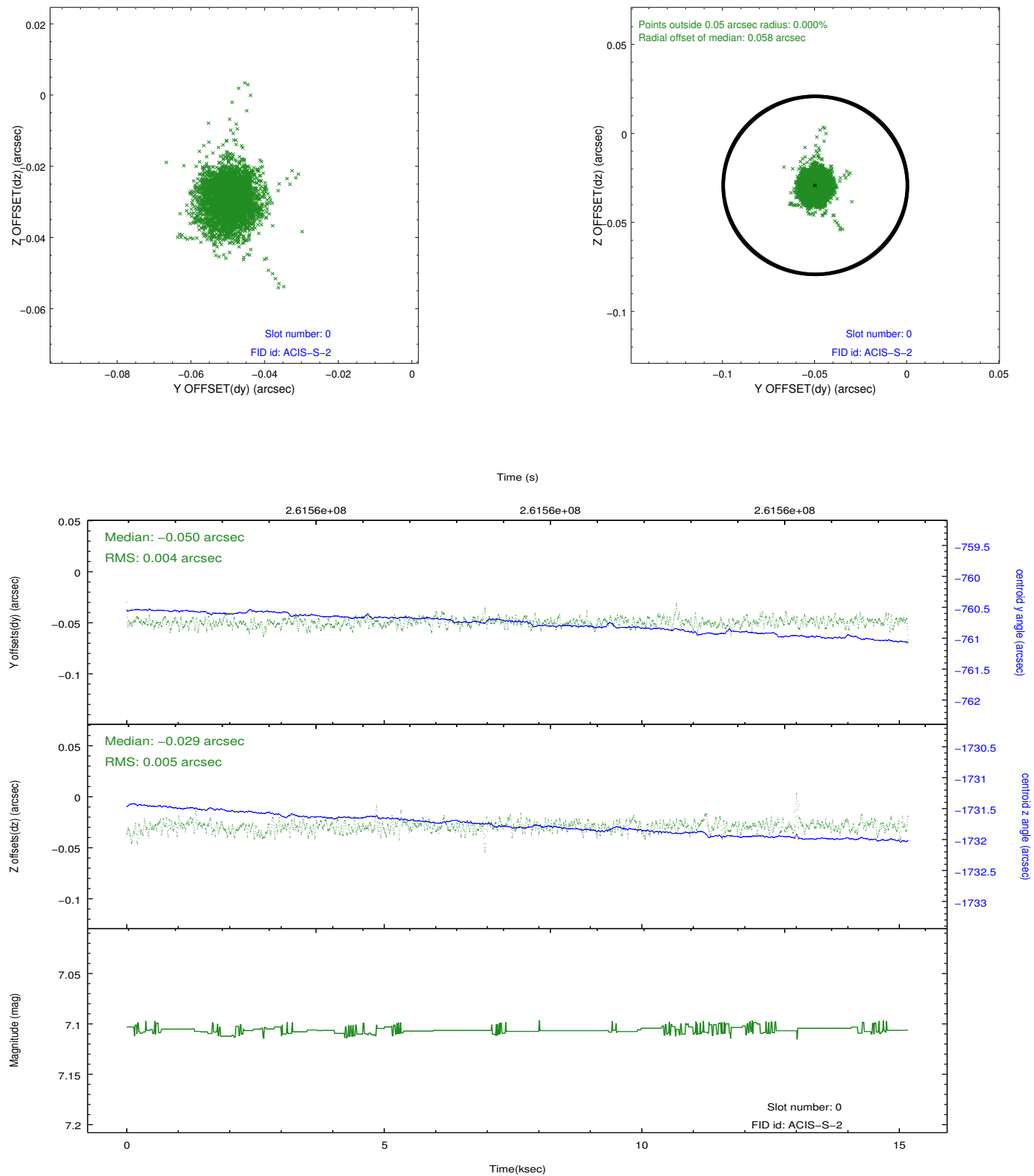


2.4.5 Slot 7

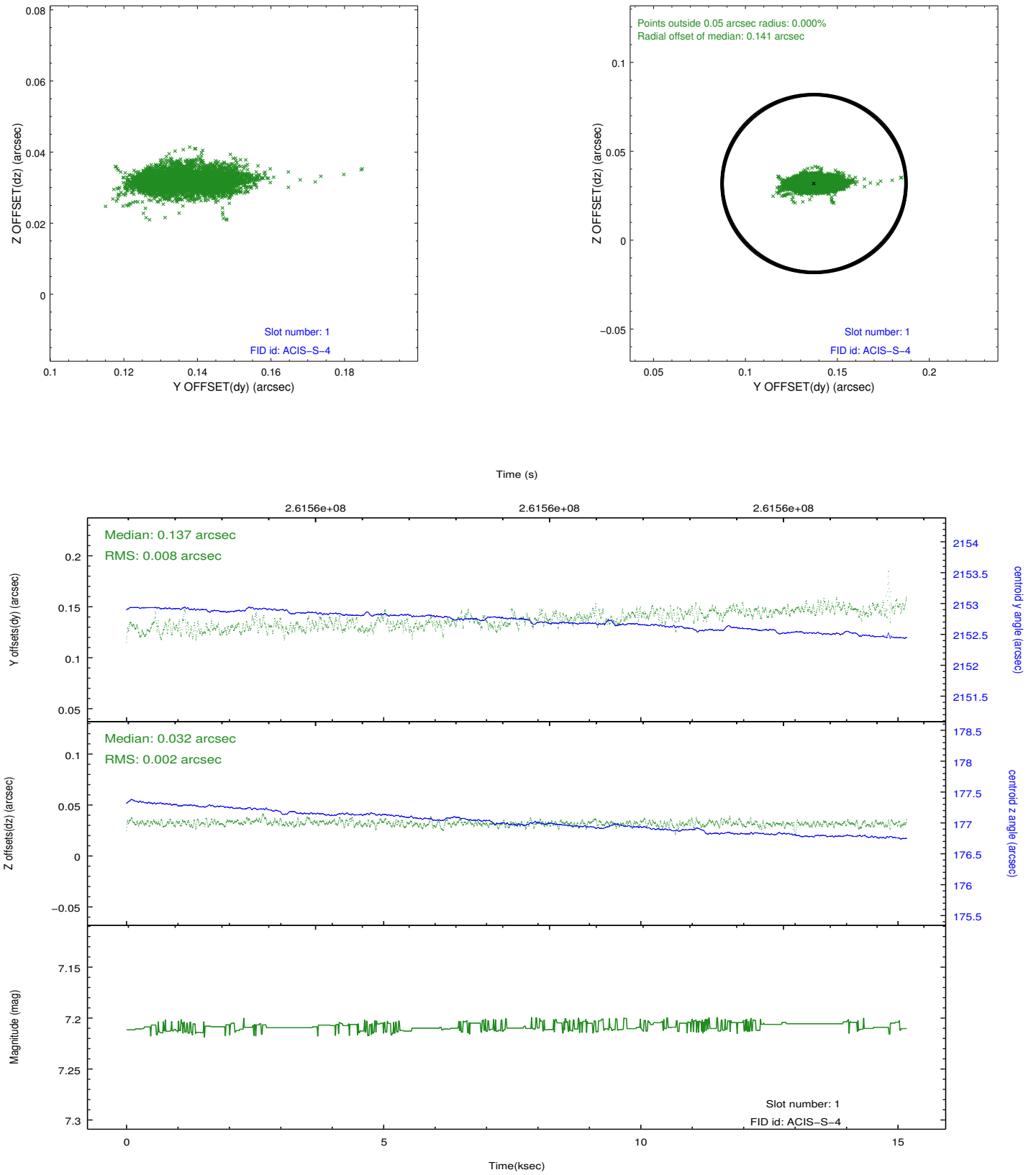


2.5 FID Slots

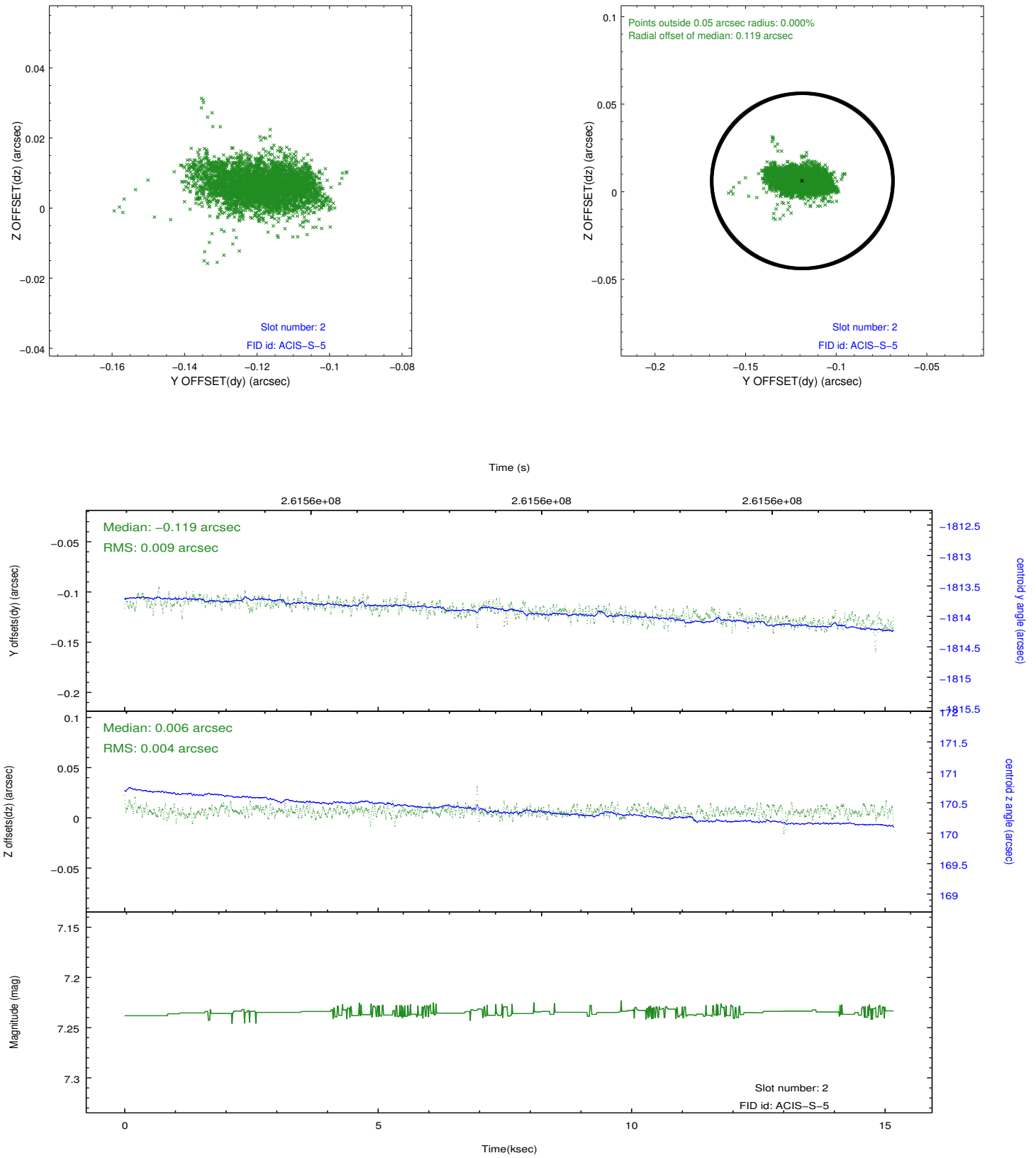
2.5.1 Slot 0



2.5.2 Slot 1



2.5.3 Slot 2



A Summary

A.1 Status

V&V Scientist	Beth Sundheim
V&V Date (YYYY-MM-DD)	2012.04.02
V&V Edition	1
V&V Disposition and Status	OK
V&V Charge Time	15.1712002

A.2 Comments