

V&V Reference Report

L2 ASCDS Version : 8.4.3

Observation 6774 - L2 Version 2
Chandra X-Ray Center

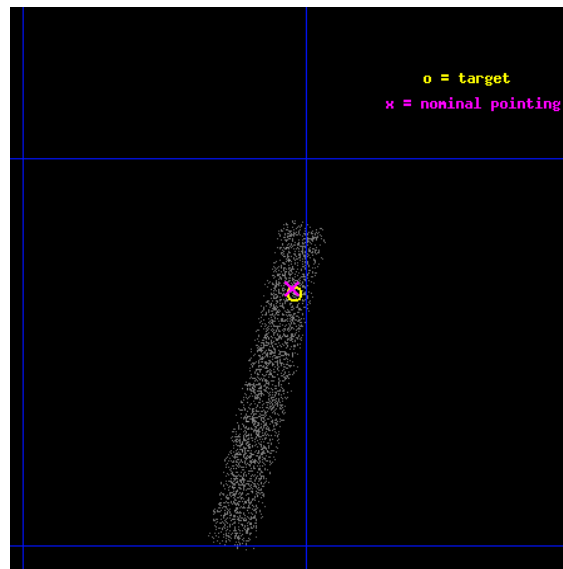
L2 Processing Date : Mar 29 2012

Contents

1	Front	2
2	OBI	3
2.1	OBI	3
2.1.1	Images	3
2.1.2	Bias	3
2.1.3	Parameters	4
2.1.4	Events	4
2.2	Compared Parameters	5
2.3	Aspect	6
2.4	Star Slots	9
2.4.1	Slot 3	9
2.4.2	Slot 4	10
2.4.3	Slot 5	11
2.4.4	Slot 6	12
2.5	FID Slots	13
2.5.1	Slot 0	13
2.5.2	Slot 1	14
2.5.3	Slot 2	15
A	Summary	16
A.1	Status	16
A.2	Comments	16

1 Front

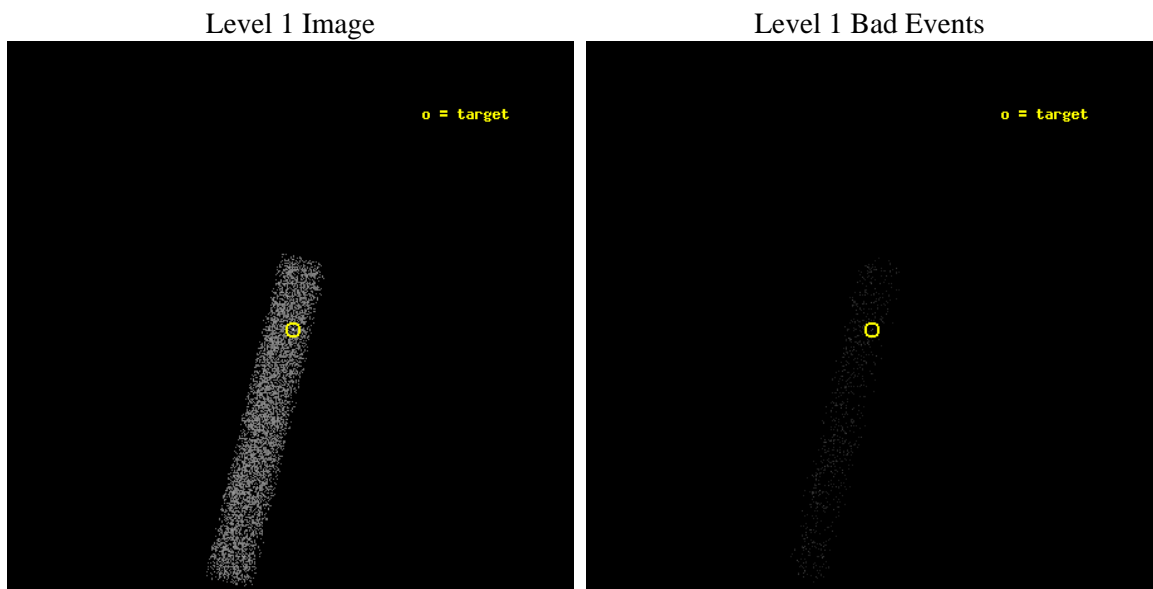
seq_num	701192	Sequence number
obs_id	6774	Observation id
title	Exploring the X-Ray Properties of Active Galactic Nuclei with Double-Peaked Balmer Lines	Proposal title
observer	Professor Gordon Garmire	Principal investigator
object	SDSSJ2125-0813	Source name
dtcycle	0	
cycle	P	events from which exps? Prim/Second/Both
ra_targ	321.255	Observer's specified target RA [deg]
dec_targ	-8.224611	Observer's specified target Dec [deg]
ra_nom	321.25639644415	Nominal RA [deg]
dec_nom	-8.2228599789834	Nominal Dec [deg]
roll_nom	103.15085158487	Nominal Roll [deg]
revision	2	Processing version of data
ontime	4531.2000674903	Sum of GTIs [s]
livetime	4109.5592848634	Livetime [s]
ontime7	4531.2000674903	Sum of GTIs [s]
l2events	3279	Number of level 2 events



2 OBI

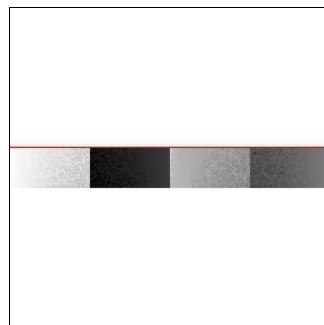
2.1 OBI

2.1.1 Images



2.1.2 Bias

Chip 7



2.1.3 Parameters

obi_num	0	Obi number	sched_exp_time	4500.000000	[s] Scheduled observation exposure time
ascdsver	8.4.3	Processing system revision	ontime	4531.2000674903	Sum of GTIs [s]
caldsver	4.4.8	 	ontime7	4531.2000674903	Sum of GTIs [s]
date	2012-03-29T11:48:42	Date and time of file creation	l1events	9707	Number of level 1 events
revision	2	Processing version of data			

2.1.4 Events

	ccd 7
level 1 events	9707
rejected events	6284
rejected %	64%

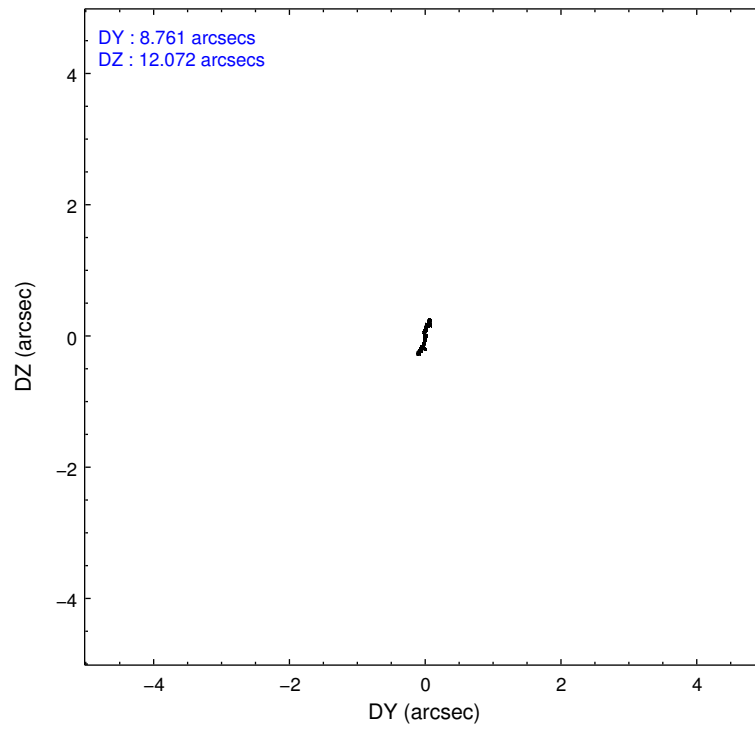
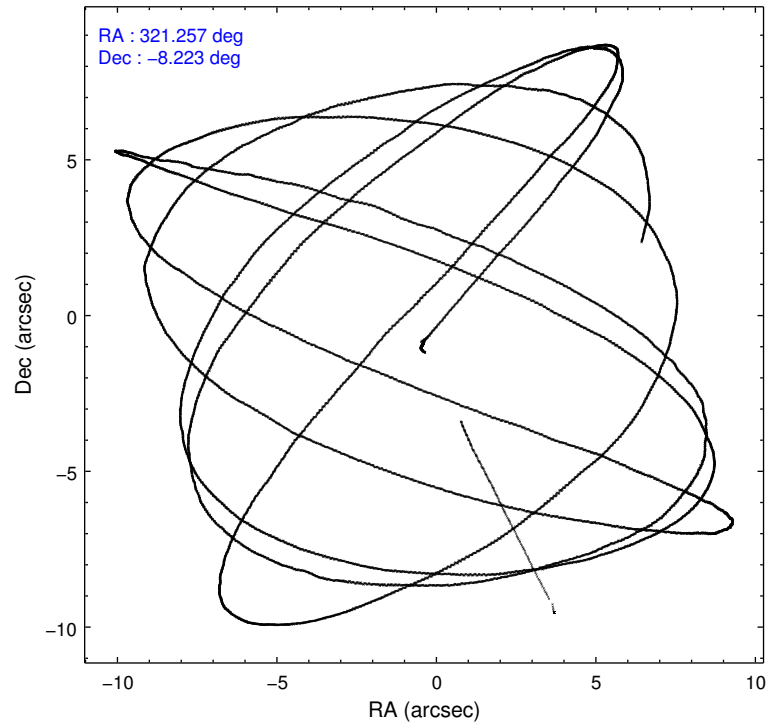
	ccd 7
grade 0 events	478
	4%
grade 1 events	11
	0%
grade 2 events	920
	9%
grade 3 events	553
	5%
grade 4 events	549
	5%
grade 5 events	873
	8%
grade 6 events	2000
	20%
grade 7 events	4323
	44%

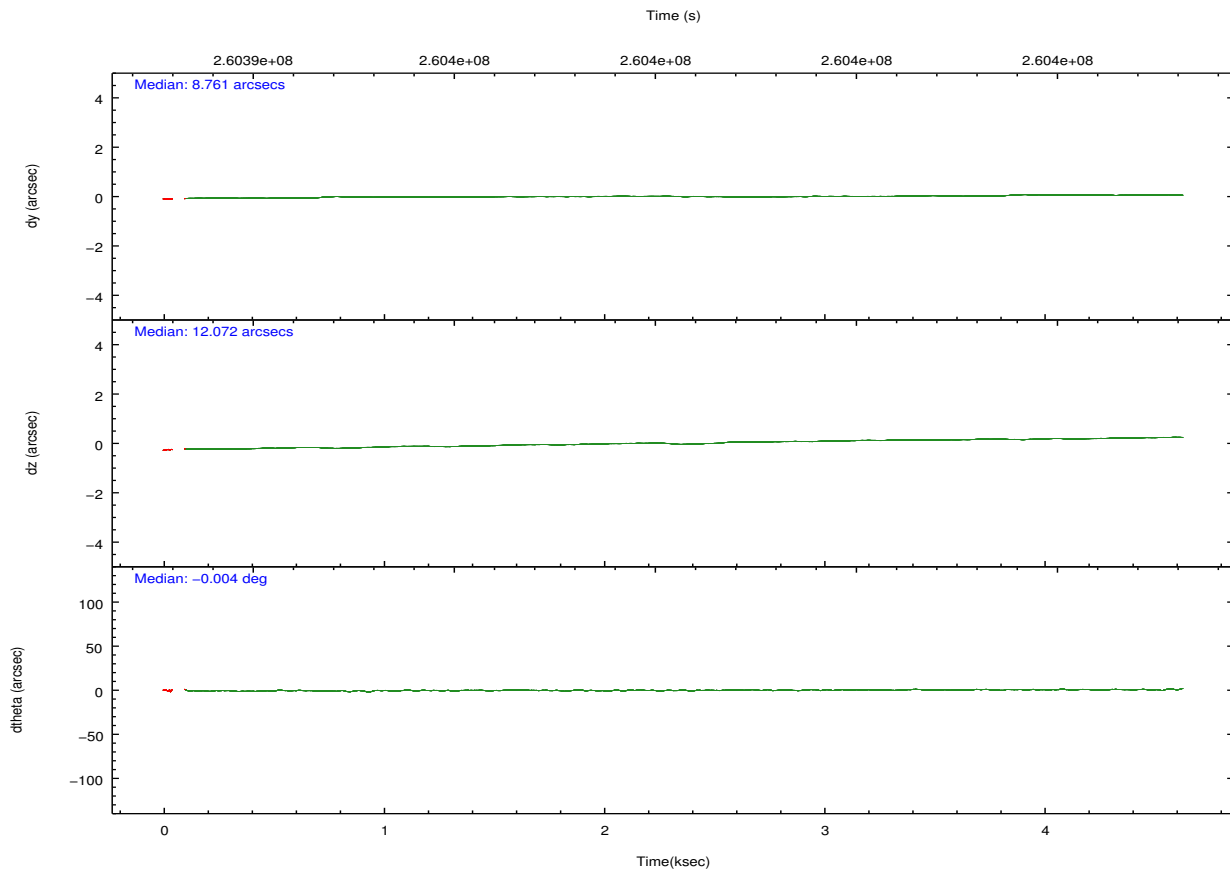
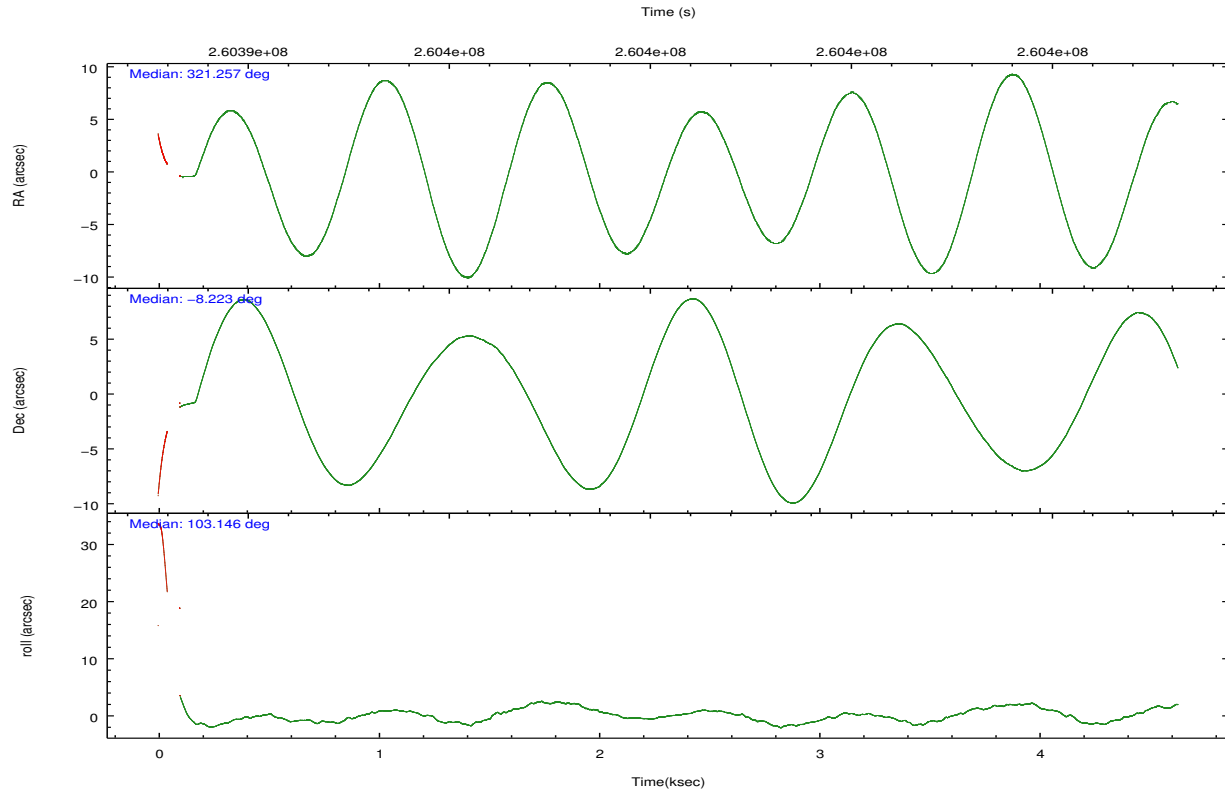
2.2 Compared Parameters

Parameter	Planned	Actual
Instrument	ACIS	ACIS
Detector	ACIS-7	ACIS-7
Grating	NONE	NONE
Data mode	FAINT	FAINT
Observation mode	POINTING	POINTING
[deg] Pointing RA	321.275449	321.2563964441525
[deg] Pointing Dec	-8.242629	-8.222859978983411
[deg] Pointing Roll	102.996905	103.1508515848706
[mm] SIM focus pos	-0.684267	-0.6828225247311905
[mm] SIM defocus	0	0.001444936568705701
[mm] SIM translation stage pos	-190.132523	-190.1400660498719
[mm] SIM translation stage offset	0	0.00754346686406393
[s] Observation start time (MET)	260393902.184000	260392504.8093
Observation start date	2006-04-02T19:37:17	2006-04-02T19:15:04
[s] Observation end time (MET)	260398402.184000	260398932.0721
Observation end date	2006-04-02T20:52:17	2006-04-02T21:02:12
Read mode	TIMED	TIMED

Parameter	Planned	Actual
Obspar format version number	7	7
Obspar file type	PREDICTED	ACTUAL
Obspar update status	NONE	UPDATED
Number of optional ACIS chips dropped	0	0
On-chip summing requested	N	N
Subarray requested	CUSTOM	1/8
Subarray start row	449	449
Subarray row count	128	128
Alternating exposures requested	N	N
[s] Primary exposure time	0.000000	0.4

2.3 Aspect



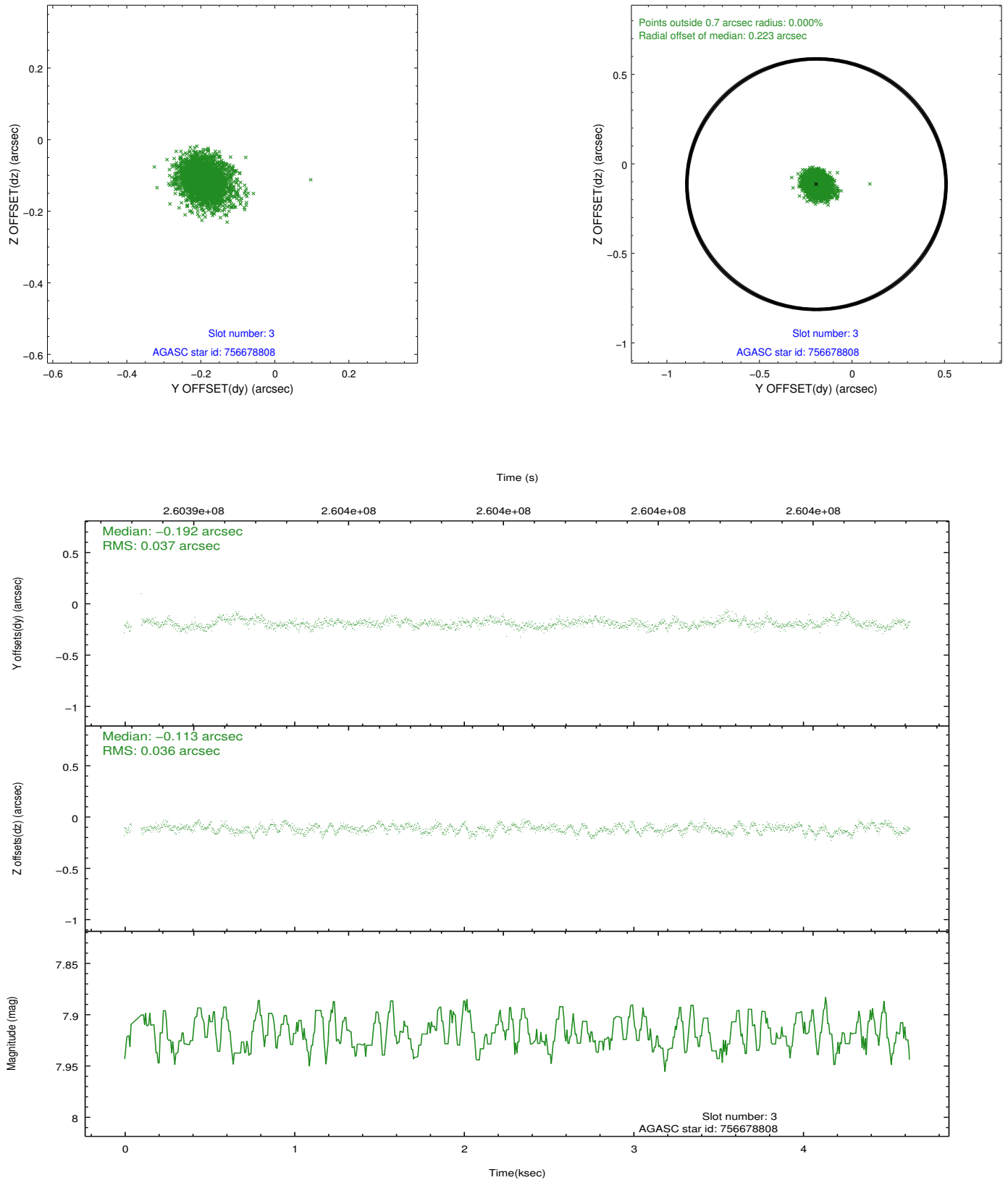


Slot Statistics

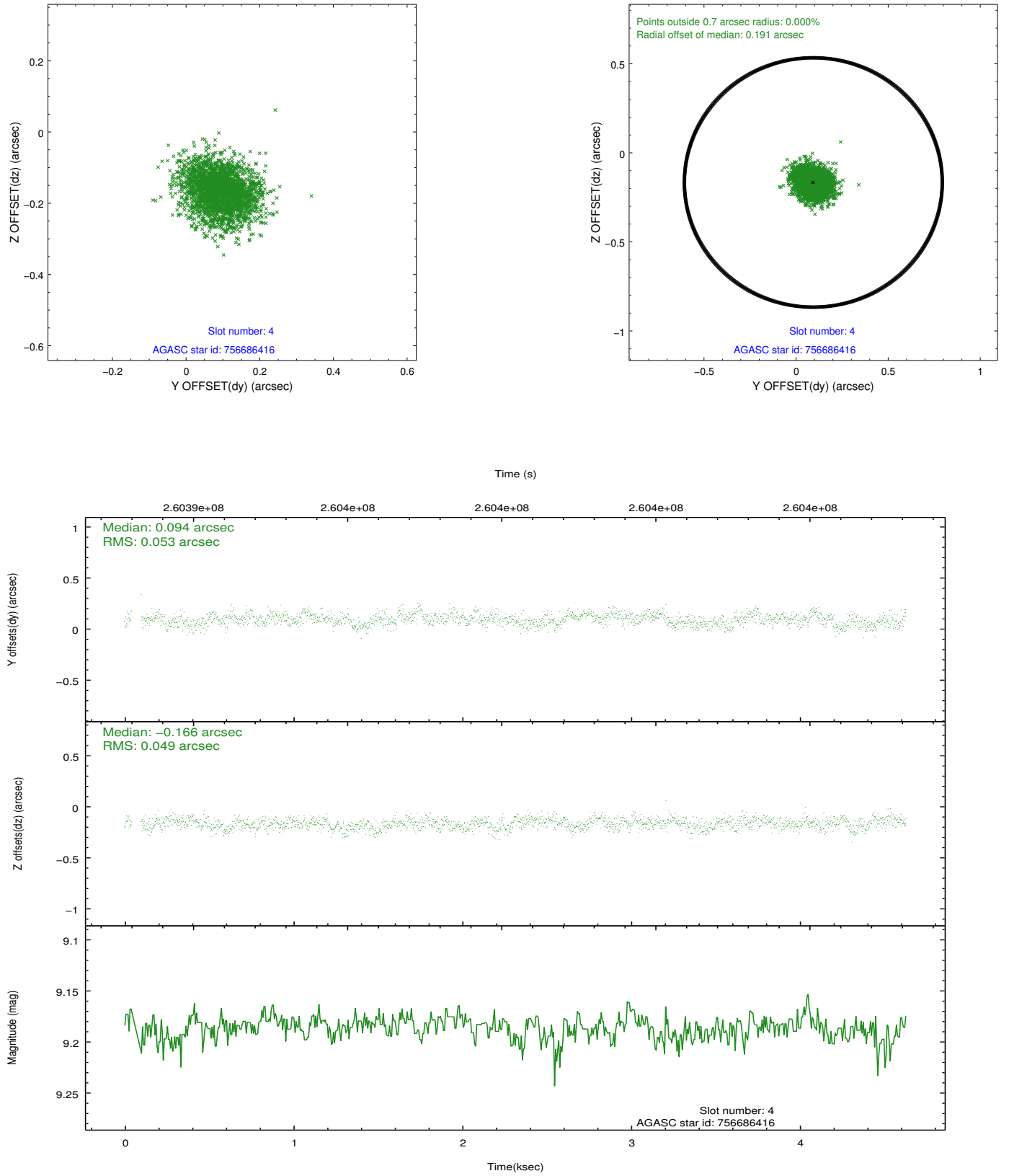
	status	id	mag	n_pts	med_dy	med_dz	drl
	FID	ACIS-S-2	7.10	1117	-0.009	-0.022	0.009
	FID	ACIS-S-4	7.20	1117	0.114	0.011	0.006
	FID	ACIS-S-5	7.23	1117	-0.136	0.020	0.008
	GUIDE	756678808	7.92	2233	-0.192	-0.113	0.055
	GUIDE	756686416	9.19	2232	0.094	-0.166	0.078
	GUIDE	758391560	7.15	2233	-0.021	0.273	0.037
	GUIDE	758390648	7.81	2233	0.116	0.010	0.069
0.0000.0000.0000.0000000.00000000.000.00							

2.4 Star Slots

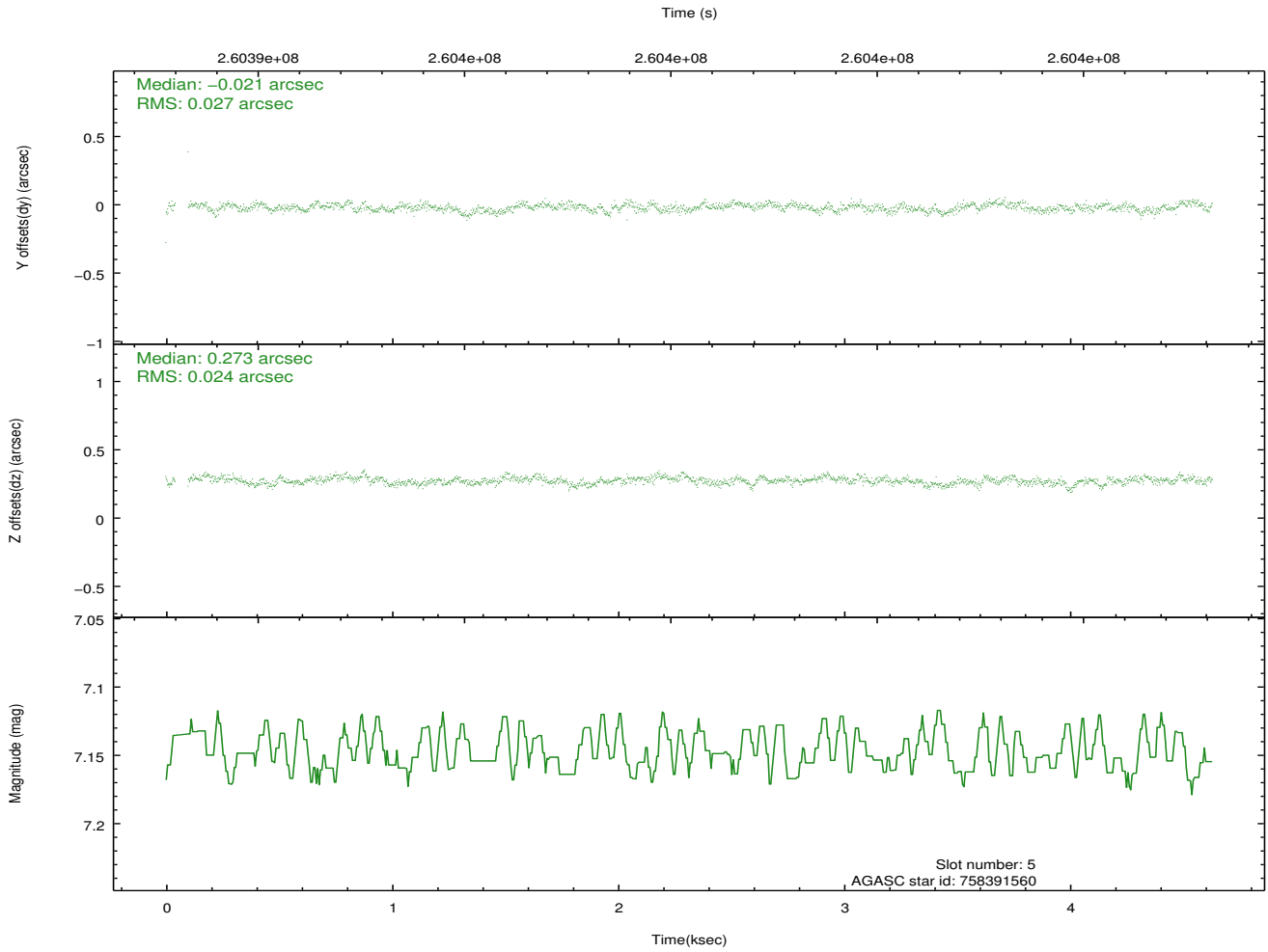
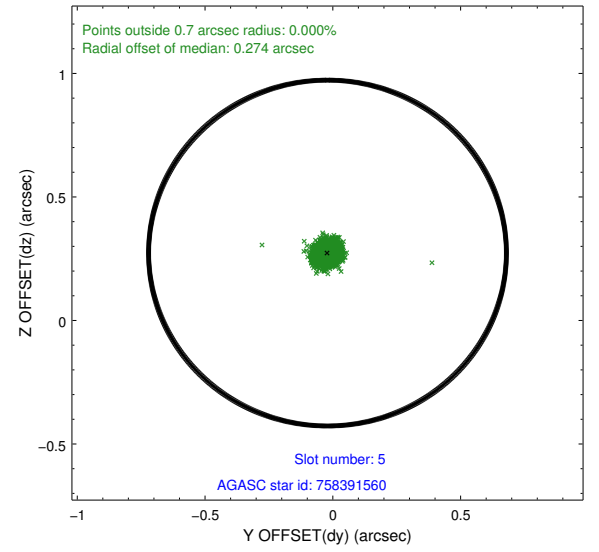
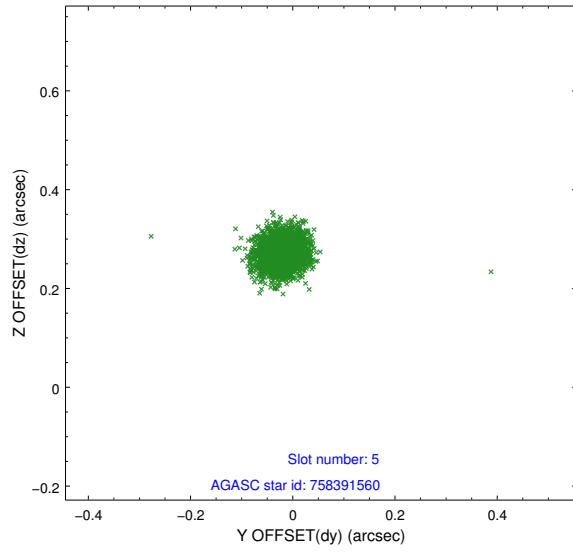
2.4.1 Slot 3



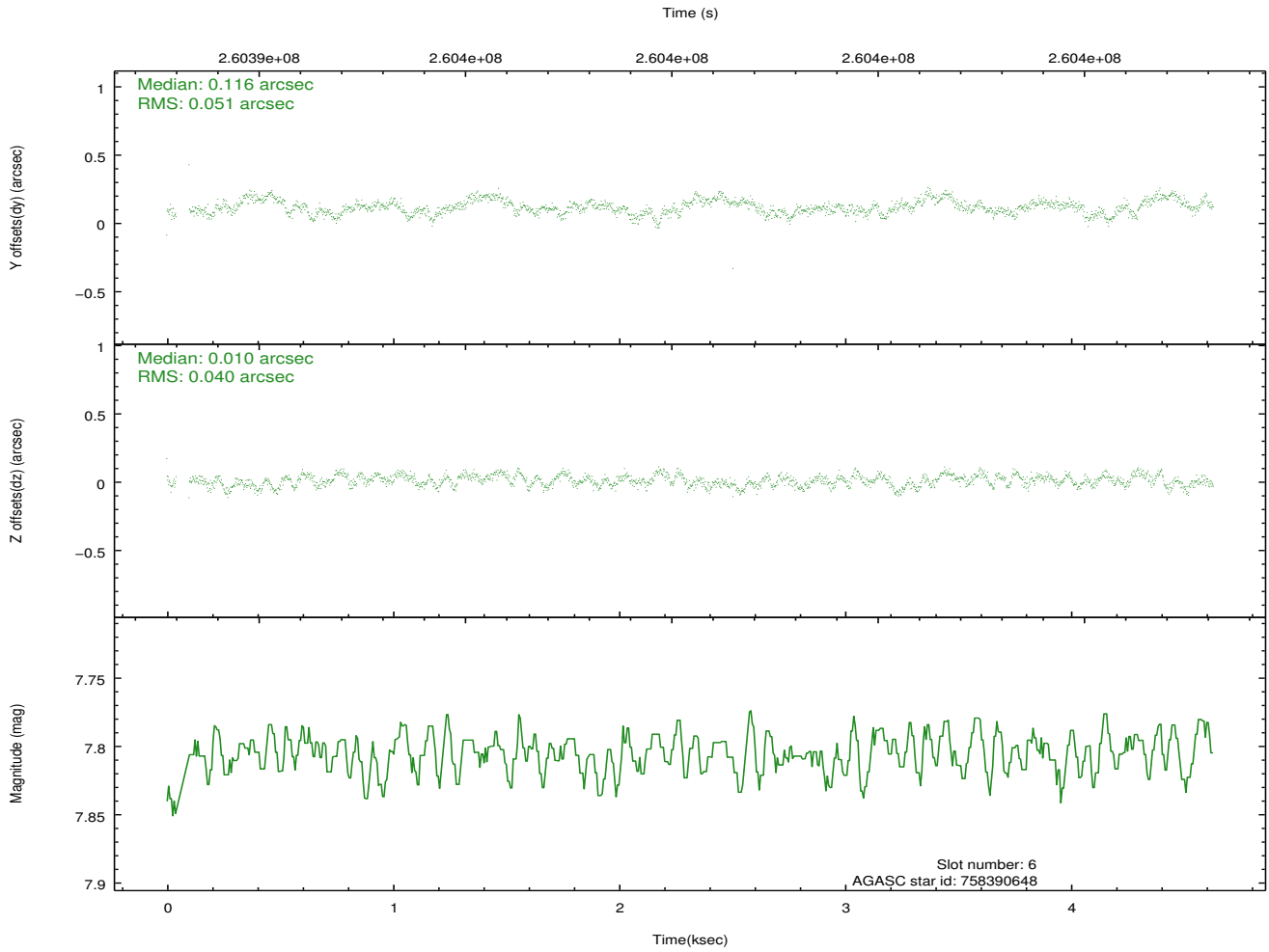
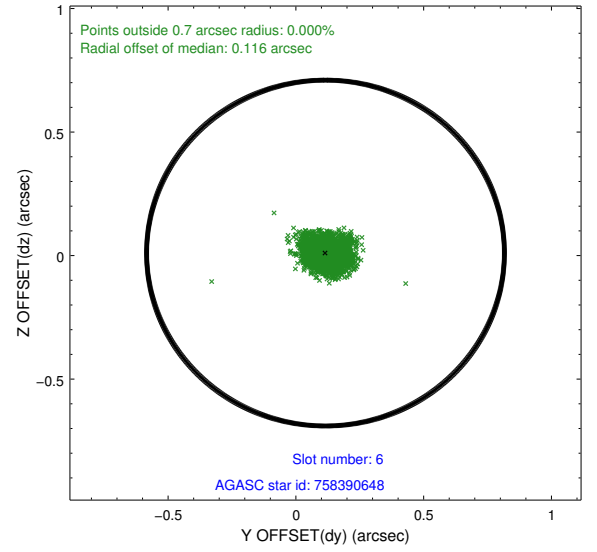
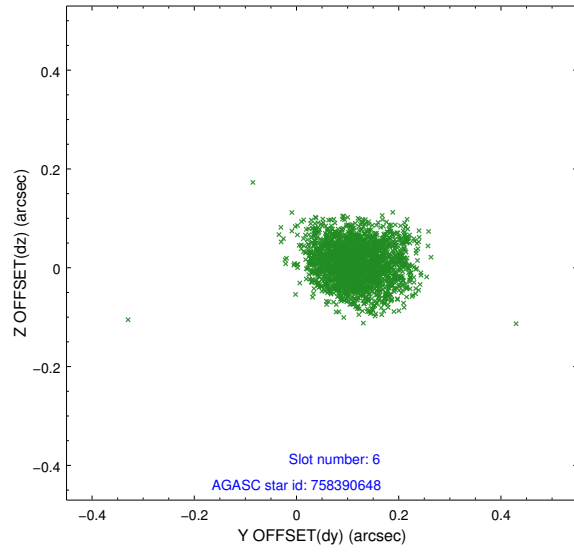
2.4.2 Slot 4



2.4.3 Slot 5

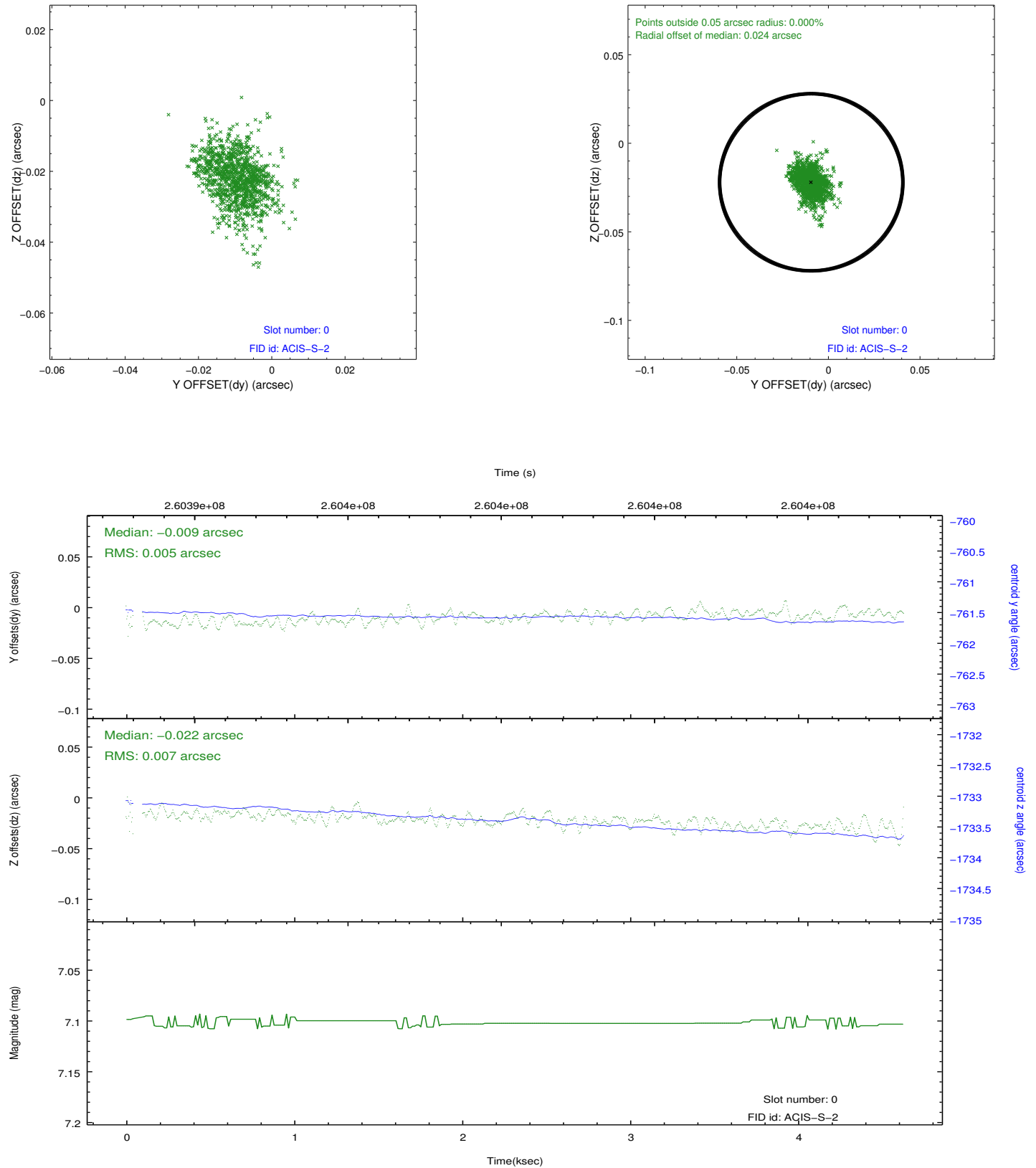


2.4.4 Slot 6

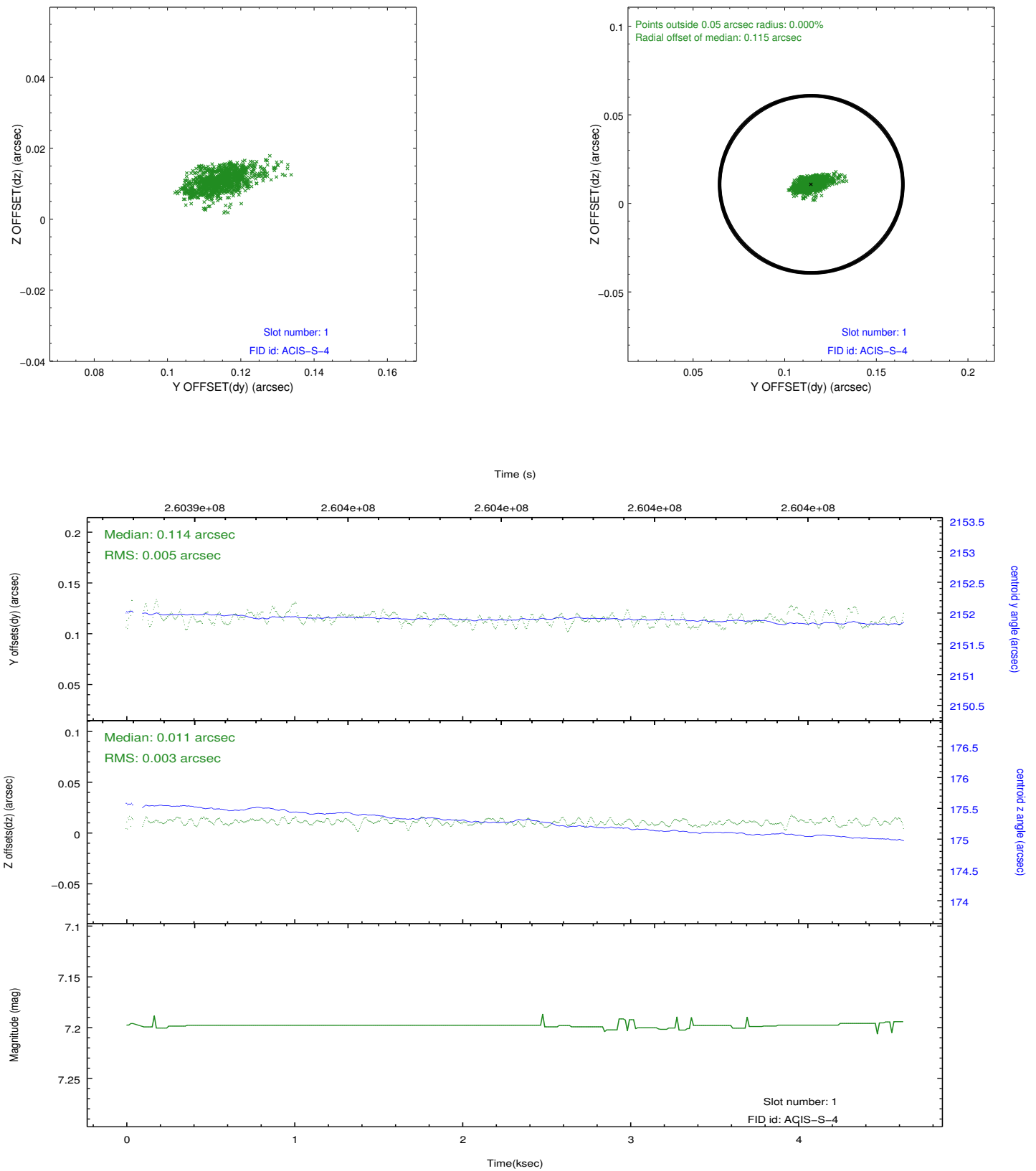


2.5 FID Slots

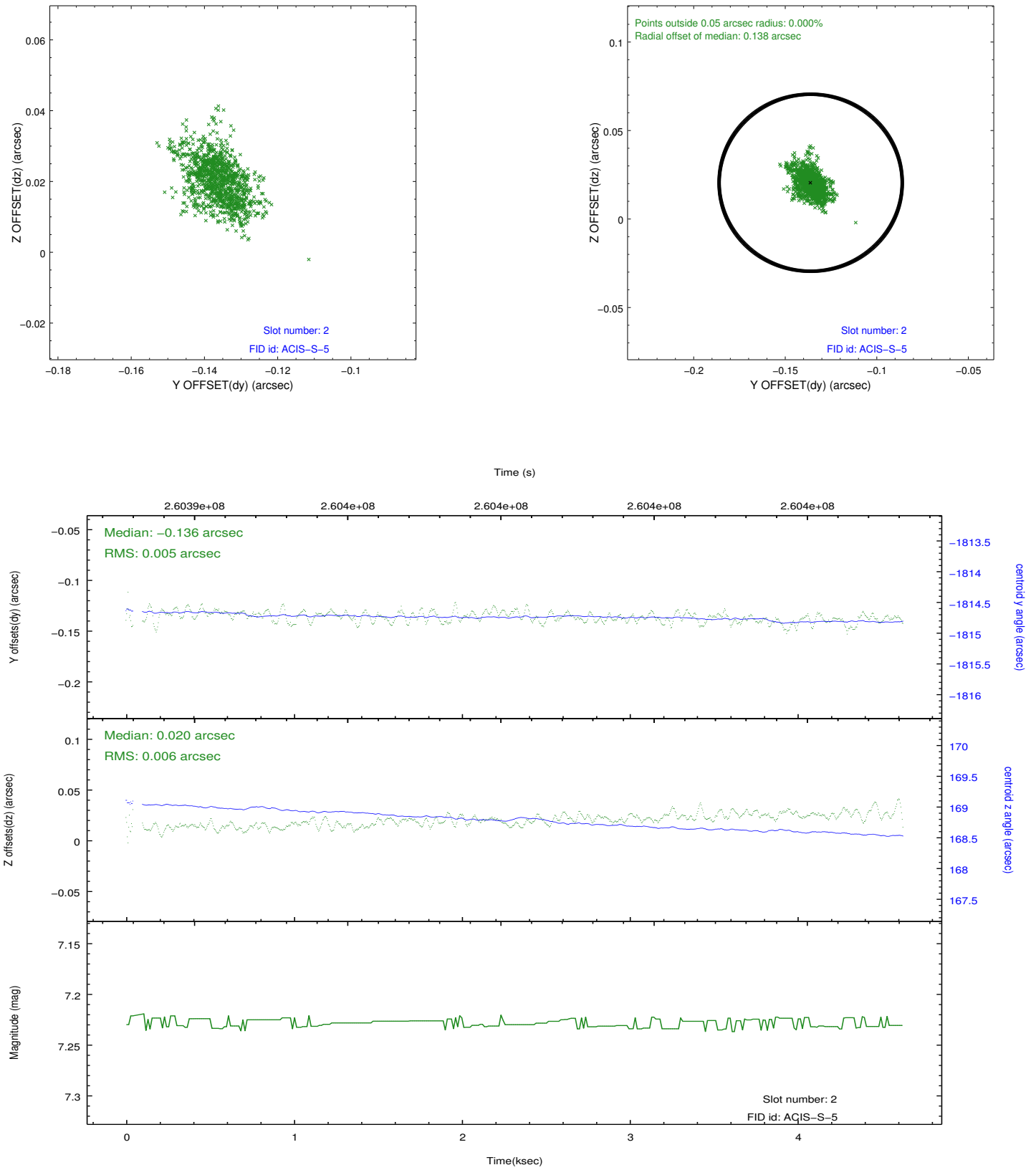
2.5.1 Slot 0



2.5.2 Slot 1



2.5.3 Slot 2



A Summary

A.1 Status

V&V Scientist	Jen Lauer
V&V Date (YYYY-MM-DD)	2012.03.30
V&V Edition	1
V&V Disposition and Status	OK
V&V Charge Time	4.53120006

A.2 Comments