

V&V Reference Report

L2 ASCDS Version : 8.4.3.1

Observation 7164 - L2 Version 2
Chandra X-Ray Center

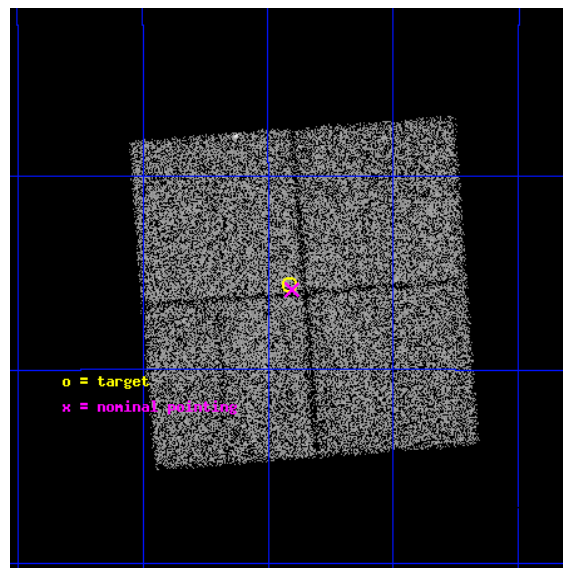
L2 Processing Date : Apr 12 2012

Contents

1	Front	2
2	OBI	3
2.1	OBI	3
2.1.1	Images	3
2.1.2	Bias	3
2.1.3	Parameters	4
2.1.4	Events	4
2.2	Compared Parameters	5
2.3	Aspect	6
2.4	Star Slots	9
2.4.1	Slot 3	9
2.4.2	Slot 4	10
2.4.3	Slot 5	11
2.4.4	Slot 6	12
2.4.5	Slot 7	13
2.5	FID Slots	14
2.5.1	Slot 0	14
2.5.2	Slot 1	15
2.5.3	Slot 2	16
A	Summary	17
A.1	Status	17
A.2	Comments	17

1 Front

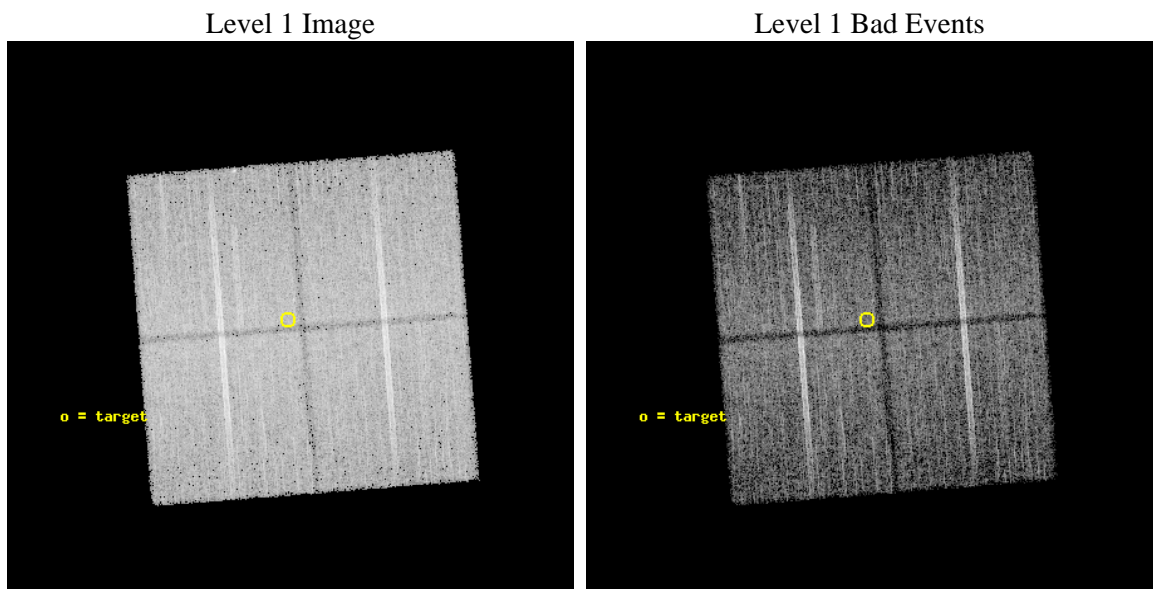
seq_num	600602	Sequence number
obs_id	7164	Observation id
title	Galactic Bulge Latitude Survey	Proposal title
observer	Professor Johnathan Grindlay	Principal investigator
object	GBW8	Source name
dtcycle	0	
cycle	P	events from which exps? Prim/Second/Both
ra_targ	266.97875	Observer's specified target RA [deg]
dec_targ	-29.260528	Observer's specified target Dec [deg]
ra_nom	266.97628648664	Nominal RA [deg]
dec_nom	-29.264670682035	Nominal Dec [deg]
roll_nom	265.60048235936	Nominal Roll [deg]
revision	2	Processing version of data
ontime	14790.10011375	Sum of GTIs [s]
livetime	14596.85656745	Livetime [s]
ontime0	14790.10011375	Sum of GTIs [s]
ontime1	14790.10011375	Sum of GTIs [s]
ontime2	14786.959153414	Sum of GTIs [s]
ontime3	14790.10011375	Sum of GTIs [s]
l2events	66336	Number of level 2 events



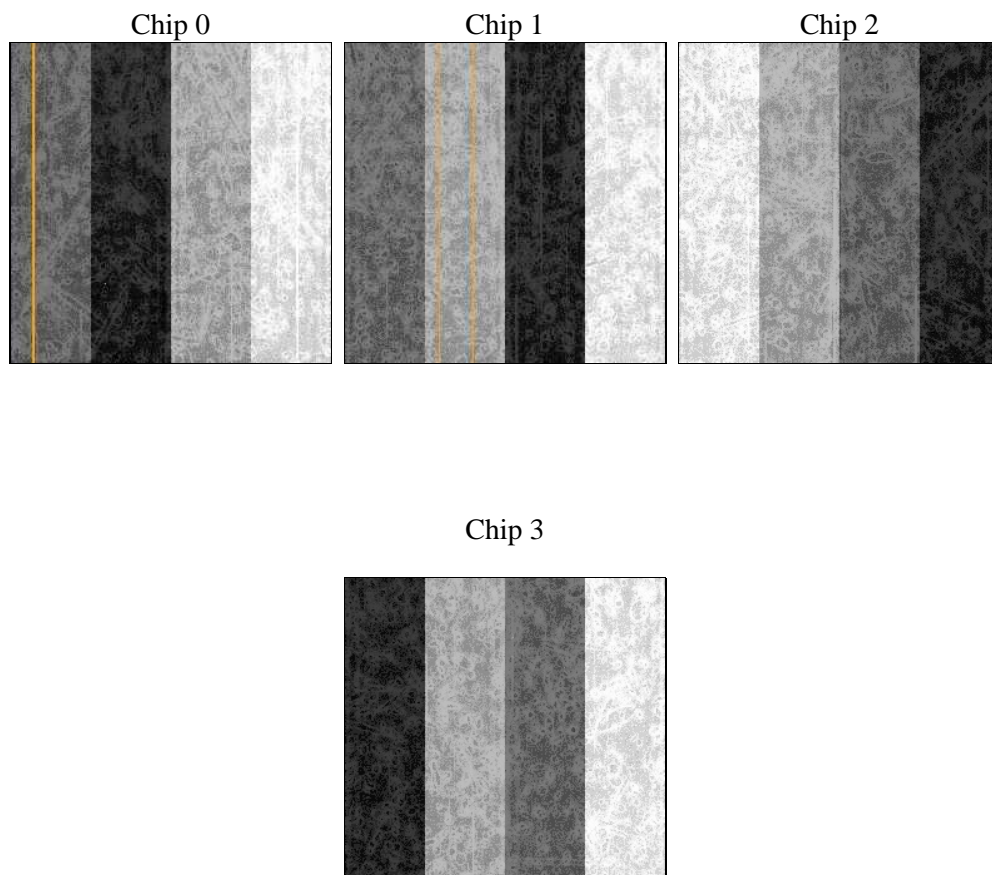
2 OBI

2.1 OBI

2.1.1 Images



2.1.2 Bias



2.1.3 Parameters

obi_num	0	Obi number	sched_exp_time	15000.000000	[s] Scheduled observation exposure time
ascdsver	8.4.3.1	Processing system revision	ontime	14790.10011375	Sum of GTIs [s]
caldsver	4.4.9	 	ontime0	14790.10011375	Sum of GTIs [s]
date	2012-04-12T22:57:51	Date and time of file creation	ontime1	14790.10011375	Sum of GTIs [s]
revision	2	Processing version of data	ontime2	14786.959153414	Sum of GTIs [s]
			ontime3	14790.10011375	Sum of GTIs [s]
			l1events	536388	Number of level 1 events

2.1.4 Events

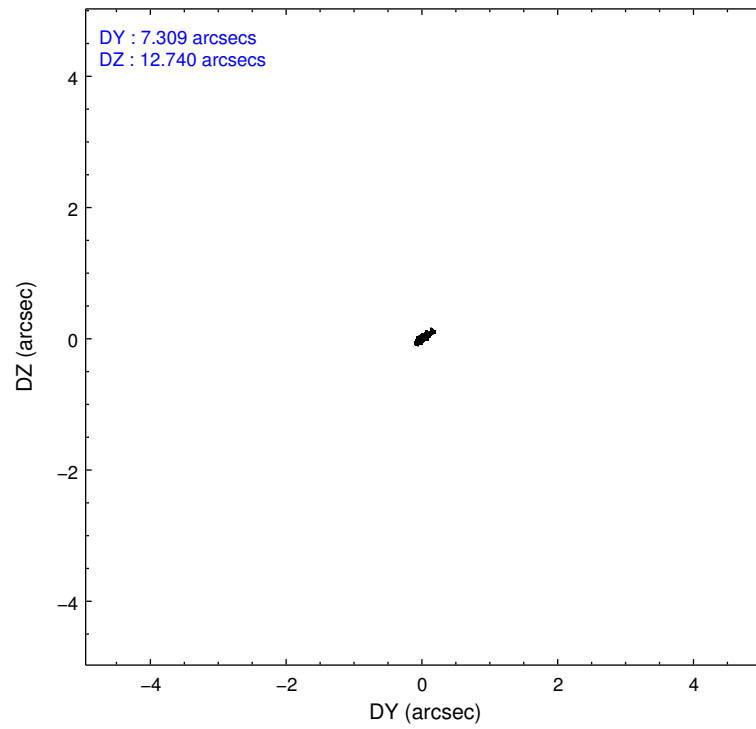
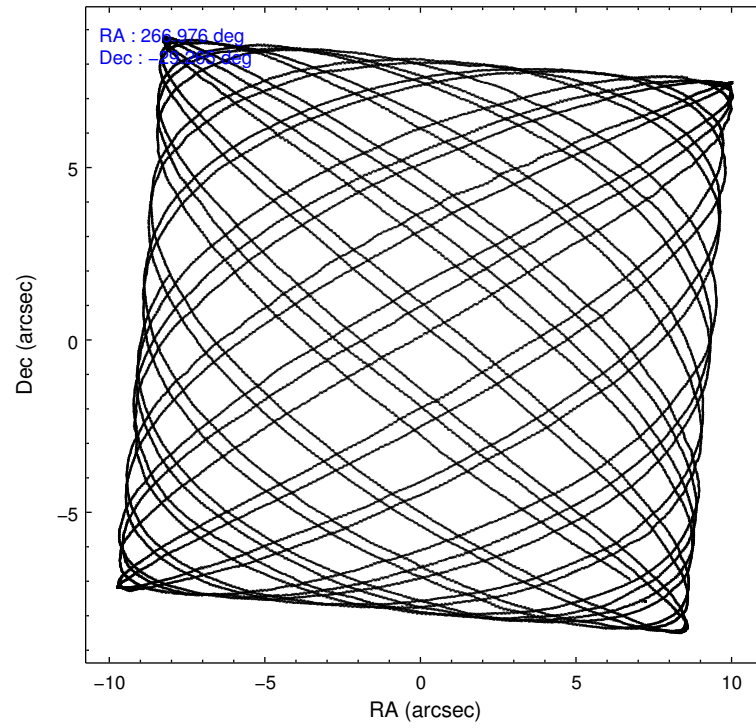
	ccd 0	ccd 1	ccd 2	ccd 3
level 1 events	128475	128887	141563	137463
rejected events	109481	109388	122142	118785
rejected %	85%	84%	86%	86%

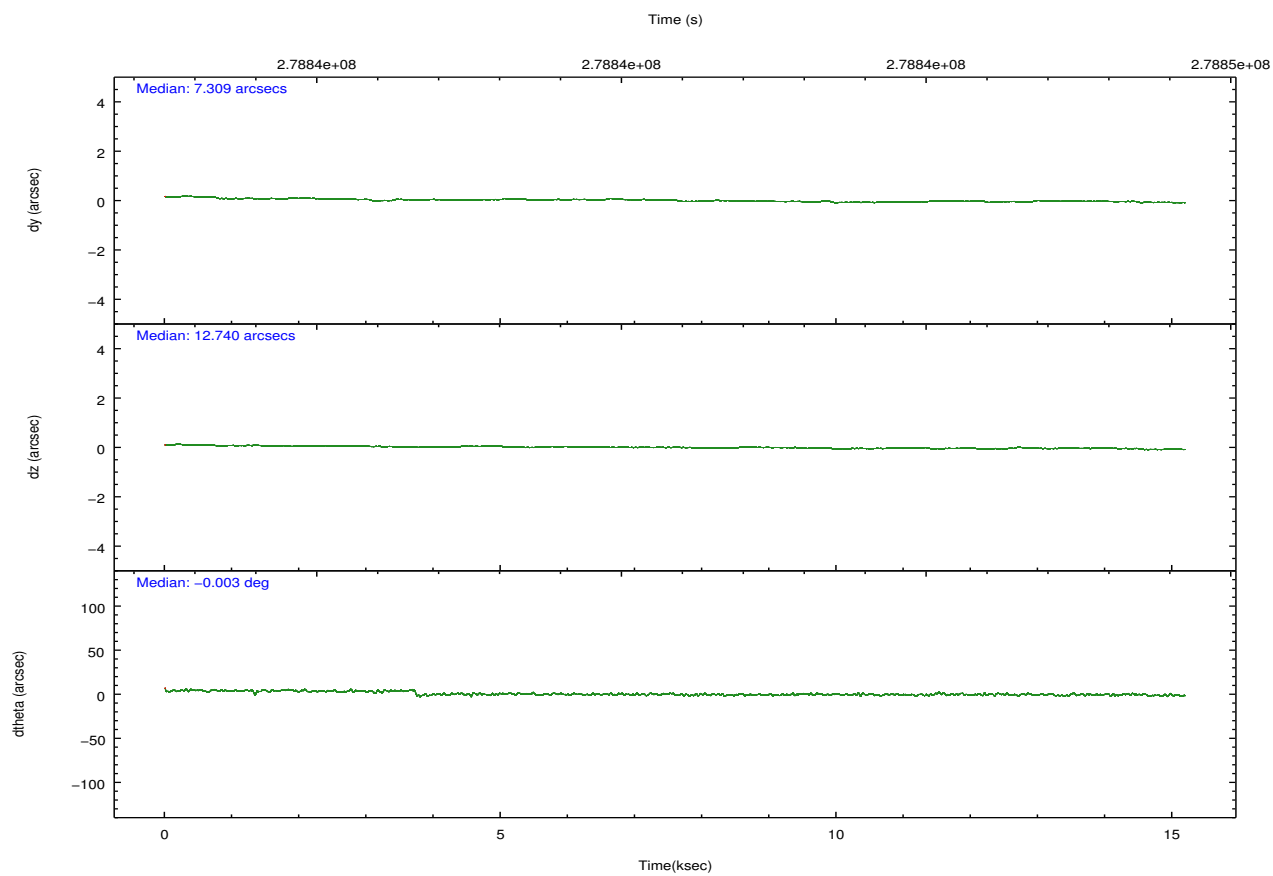
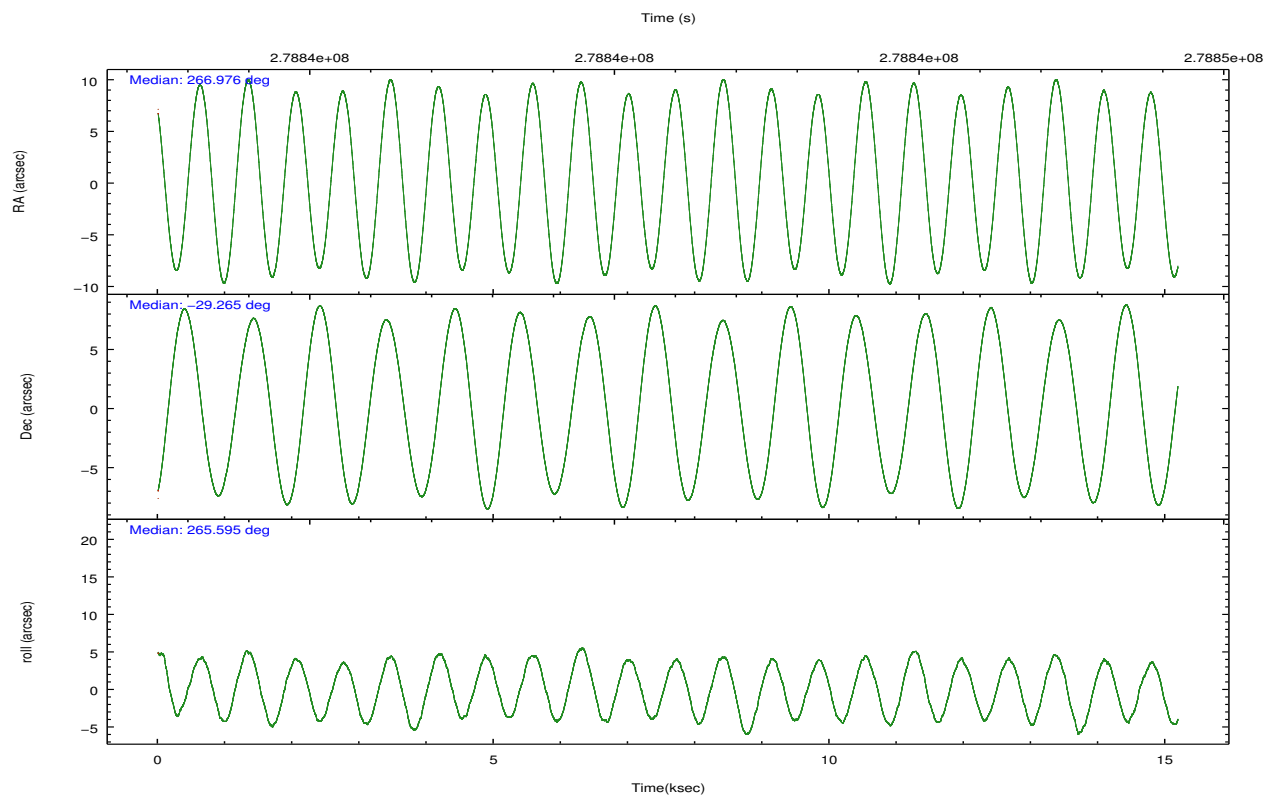
	ccd 0	ccd 1	ccd 2	ccd 3
grade 0 events	8860	8218	9665	8965
	6%	6%	6%	6%
grade 1 events	83	75	115	101
	0%	0%	0%	0%
grade 2 events	3923	4220	3744	3519
	3%	3%	2%	2%
grade 3 events	1744	1795	1675	1636
	1%	1%	1%	1%
grade 4 events	1524	1711	1576	1641
	1%	1%	1%	1%
grade 5 events	5467	5814	5128	6093
	4%	4%	3%	4%
grade 6 events	2949	3557	2764	2923
	2%	2%	1%	2%
grade 7 events	103925	103497	116896	112585
	80%	80%	82%	81%

2.2 Compared Parameters

Parameter	Planned	Actual	Parameter	Planned	Actual
Instrument	ACIS	ACIS	Obspar format version number	7	7
Detector	ACIS-0123	ACIS-0123	Obspar file type	PREDICTED	ACTUAL
Grating	NONE	NONE	Obspar update status	NONE	UPDATED
Data mode	VFAINT	VFAINT	Number of optional ACIS chips dropped	0	0
Observation mode	POINTING	POINTING	On-chip summing requested	N	N
[deg] Pointing RA	266.962625	266.9762864866391	Subarray requested	NONE	NONE
[deg] Pointing Dec	-29.239994	-29.26467068203454	Alternating exposures requested	N	N
[deg] Pointing Roll	265.385127	265.6004823593589	[s] Primary exposure time	0.000000	3.1
[mm] SIM focus pos	-0.782348	-0.7809083437167272			
[mm] SIM defocus	0	0.001439871863259334			
[mm] SIM translation stage pos	-233.592463	-233.5874344608287			
[mm] SIM translation stage offset	0	-0.005018542100998502			
[s] Observation start time (MET)	278833476.184000	278833100.27348			
Observation start date	2006-11-02T05:43:31	2006-11-02T05:38:20			
[s] Observation end time (MET)	278848476.184000	278849584.83676			
Observation end date	2006-11-02T09:53:31	2006-11-02T10:13:04			
Read mode	TIMED	TIMED			

2.3 Aspect



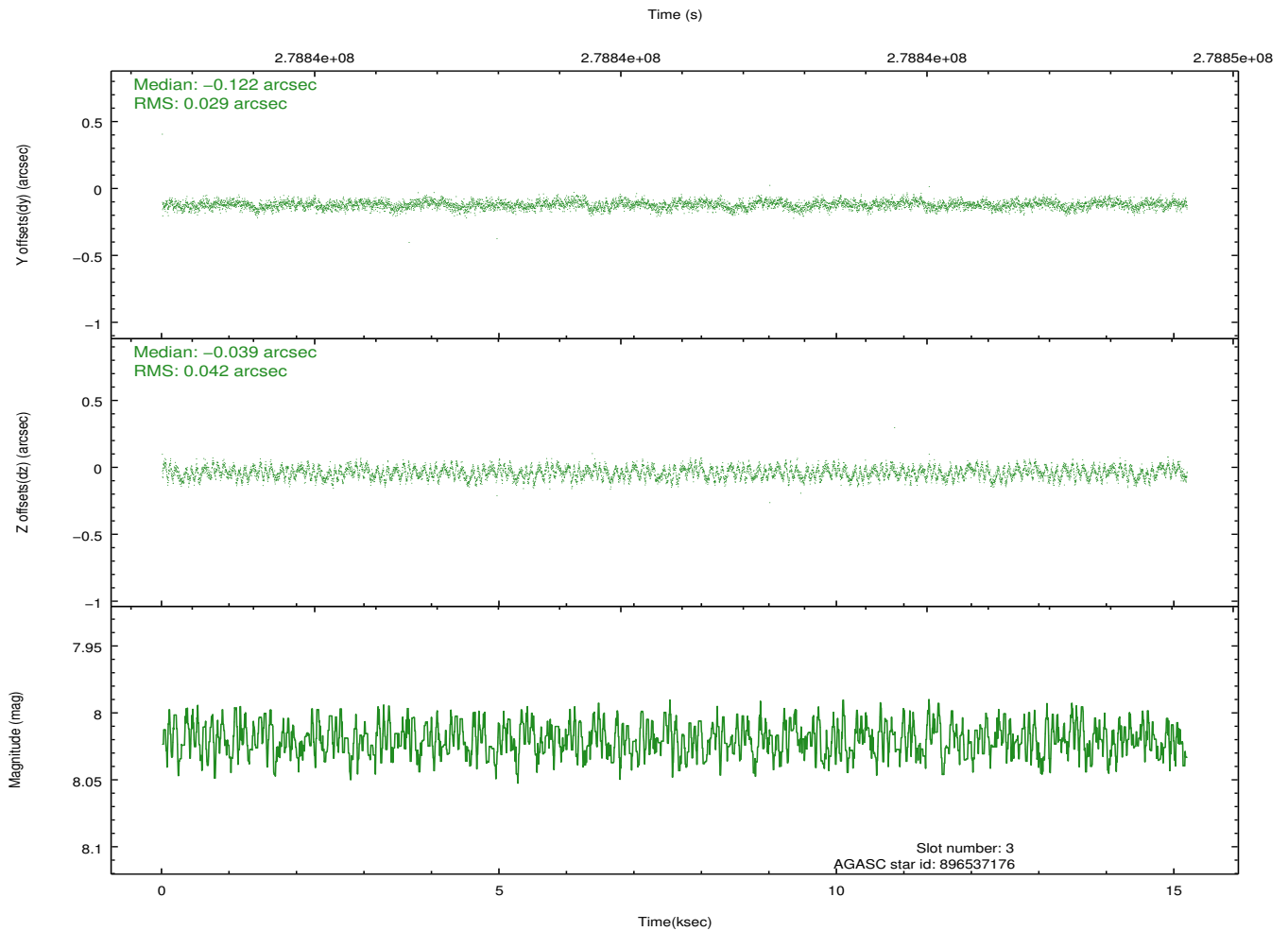
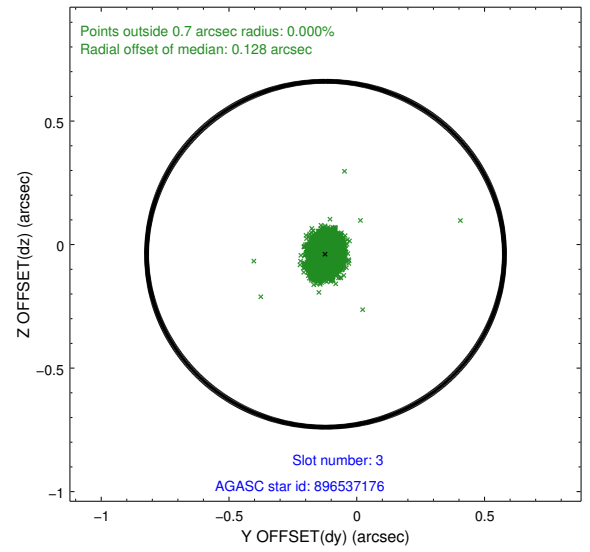
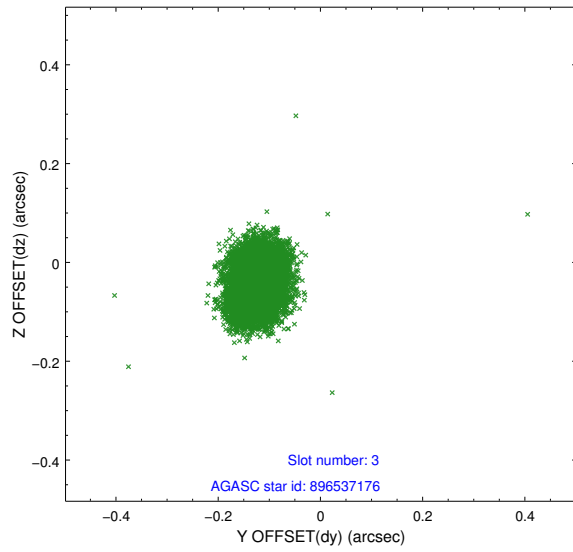


Slot Statistics

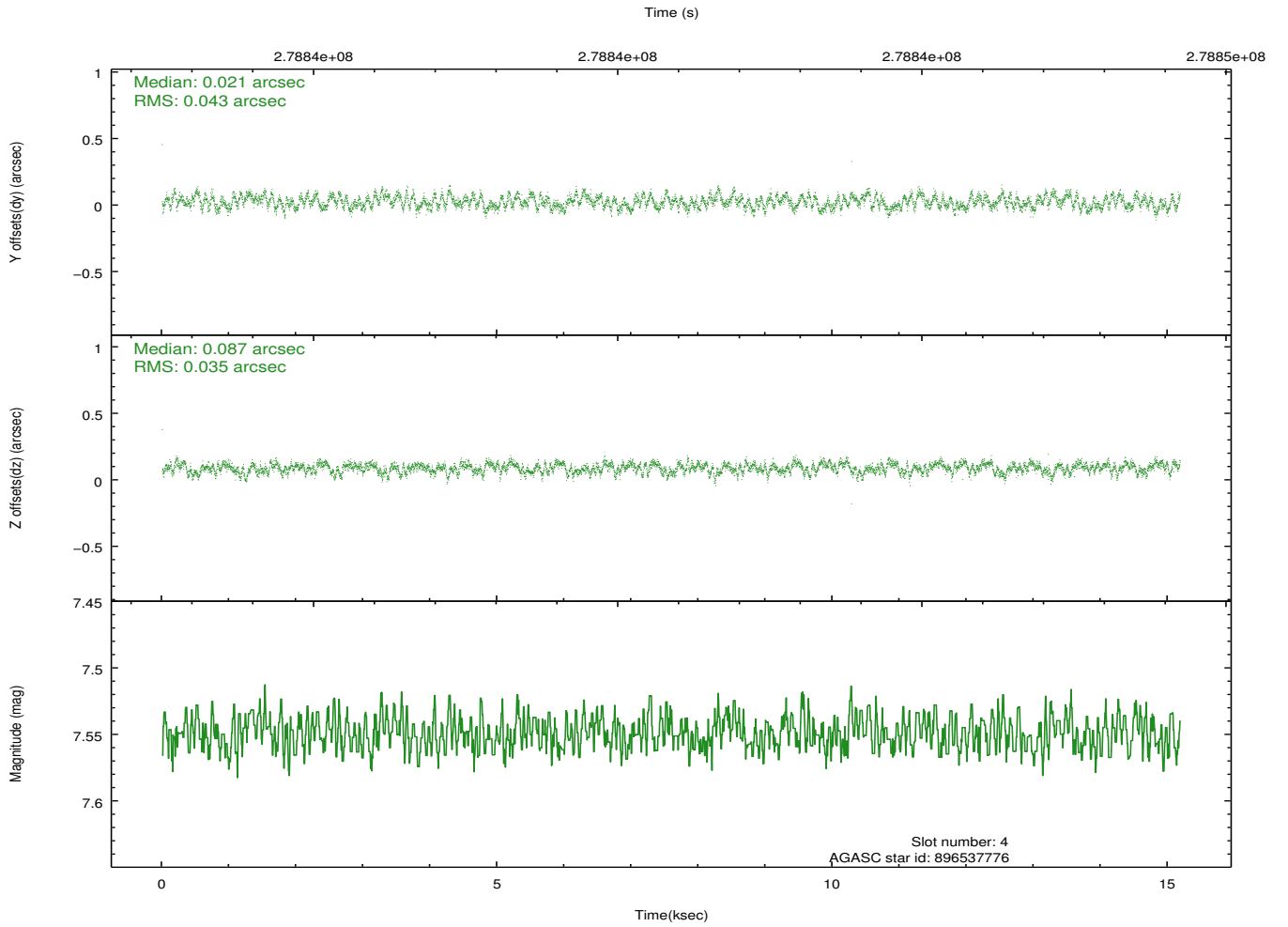
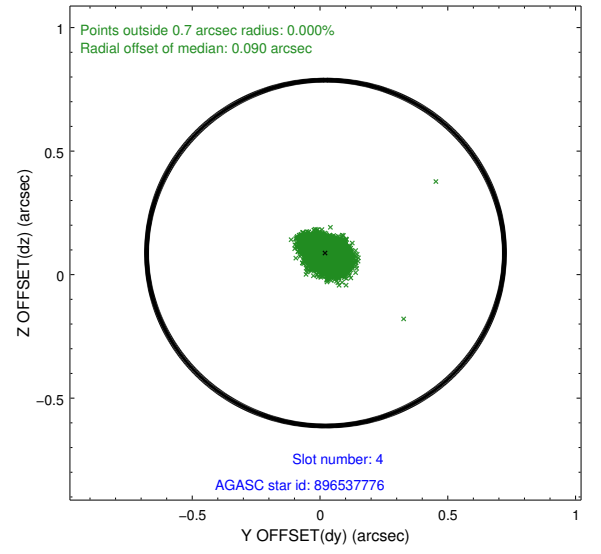
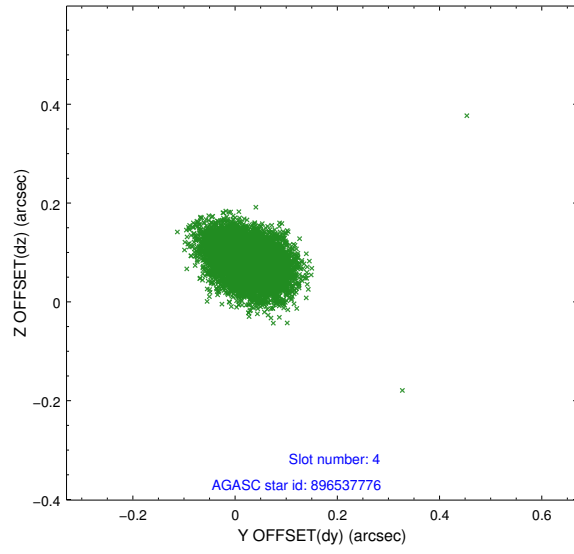
slot	status	id	mag	n_pts	med_dy	med_dz	dr1	dr2	ra	dec	mean_y	mean_z
0	FID	ACIS-I-2	7.14	3704	-0.170	-0.081	0.011	0.022	0.000000	0.000000	-761.98	-842.74
1	FID	ACIS-I-4	7.18	3704	0.098	0.104	0.013	0.034	0.000000	0.000000	2152.19	1063.49
2	FID	ACIS-I-6	7.24	3704	-0.026	0.042	0.016	0.044	0.000000	0.000000	398.59	1705.94
3	GUIDE	896537176	8.02	7405	-0.122	-0.039	0.055	0.085	266.498272	-28.678259	-1894.55	-1624.33
4	GUIDE	896537776	7.55	7408	0.021	0.087	0.059	0.093	266.655684	-29.665673	1606.12	-833.39
5	GUIDE	896541576	8.17	7406	-0.166	-0.087	0.067	0.104	267.051055	-28.762912	-1733.96	139.91
6	GUIDE	896541168	8.18	7403	0.162	-0.034	0.066	0.106	266.319970	-29.850801	2359.26	-1822.48
7	GUIDE	896543712	8.26	7406	0.111	0.080	0.082	0.129	267.764551	-28.659720	-2277.06	2357.66

2.4 Star Slots

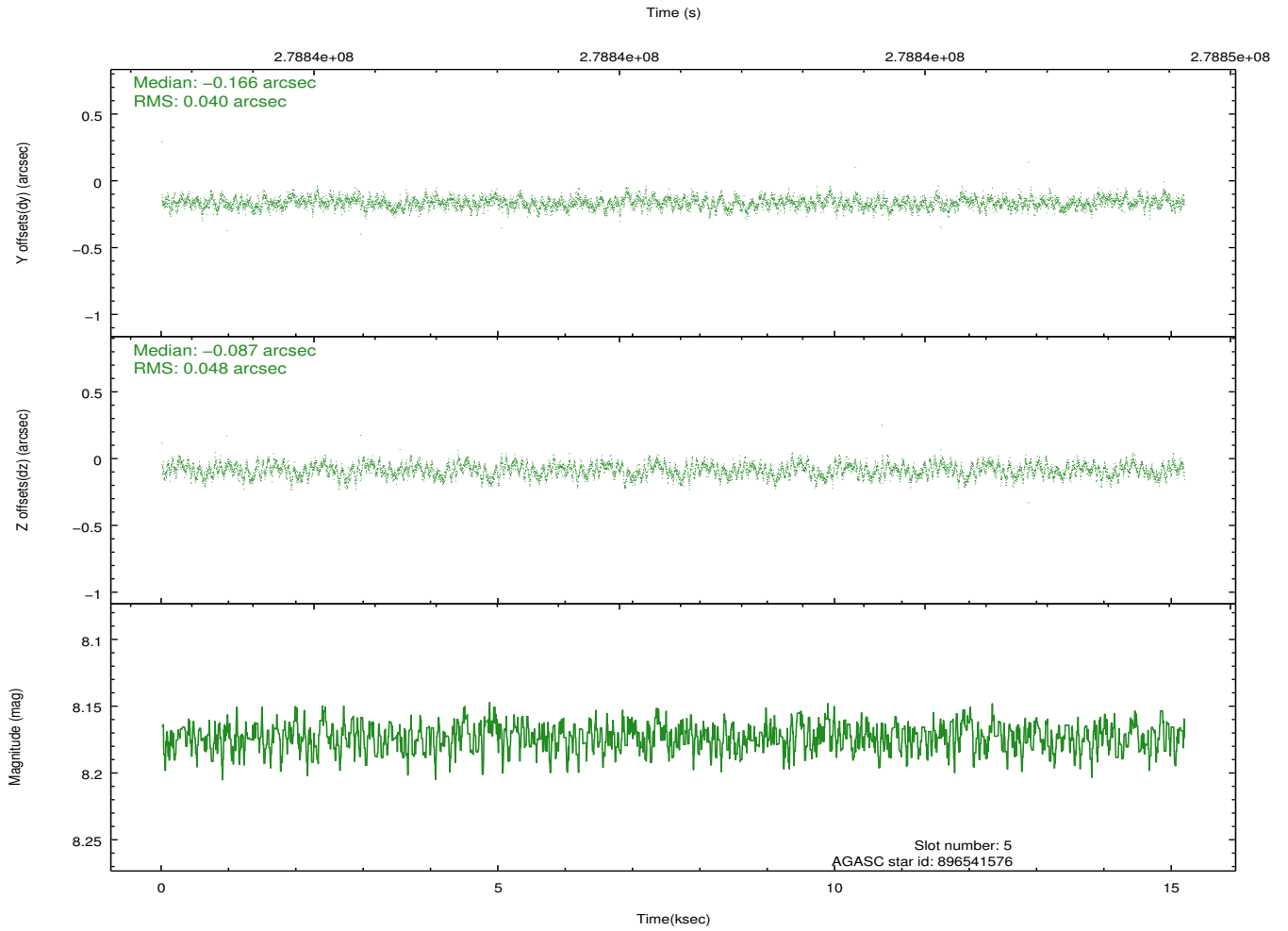
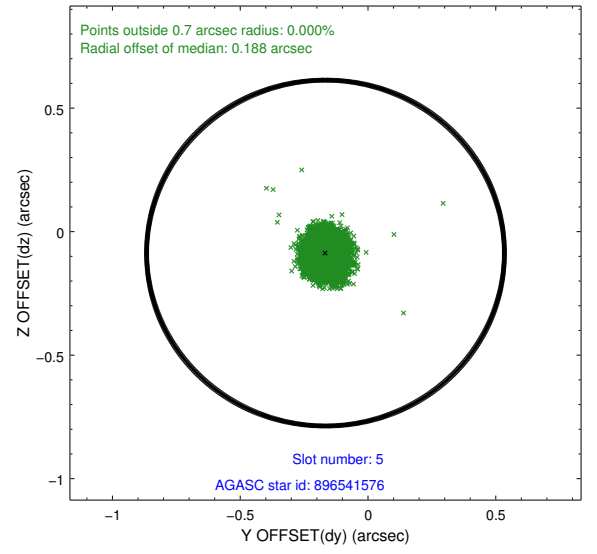
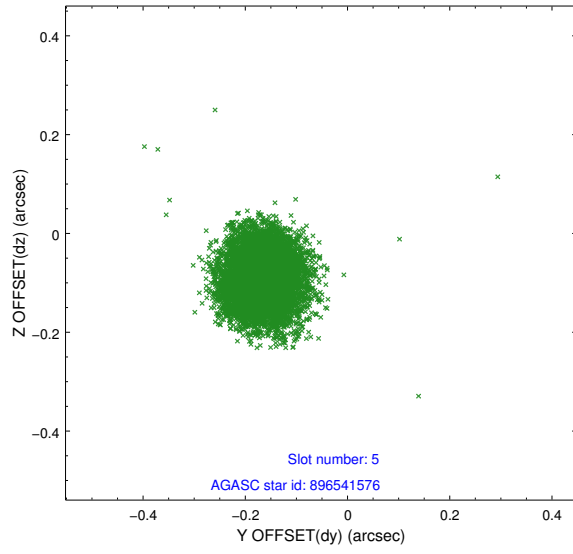
2.4.1 Slot 3



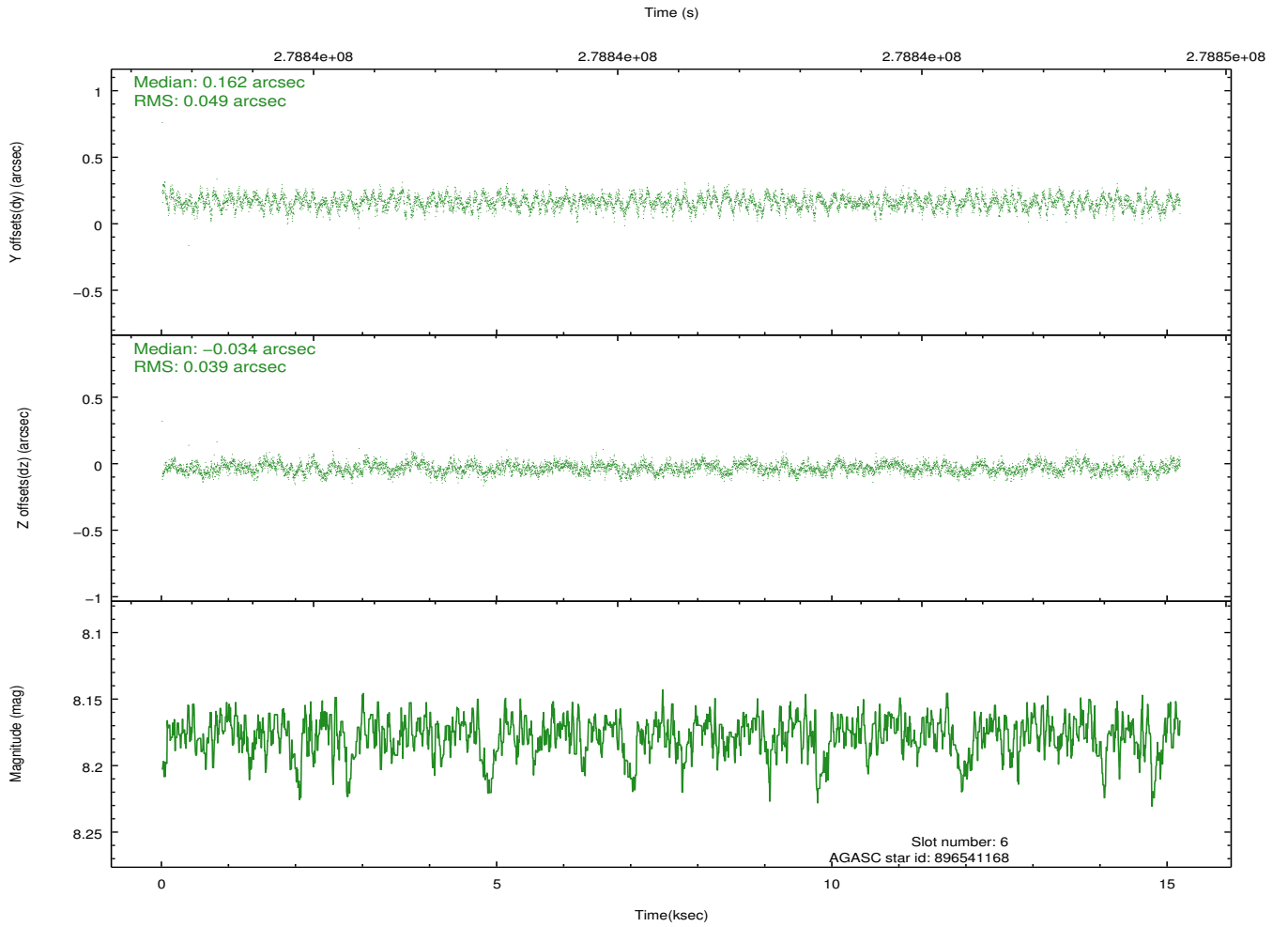
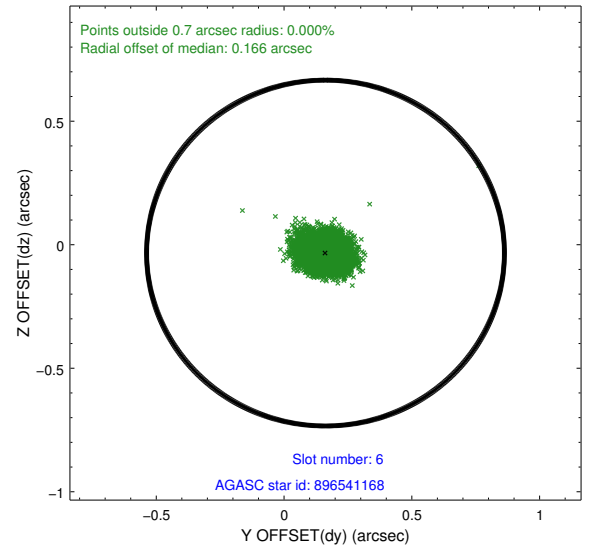
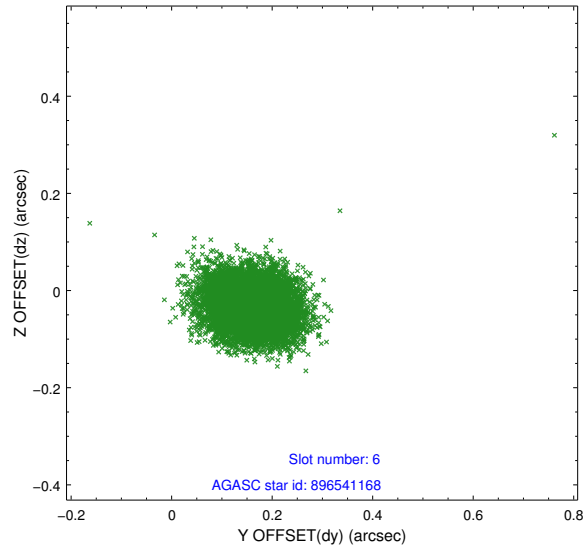
2.4.2 Slot 4



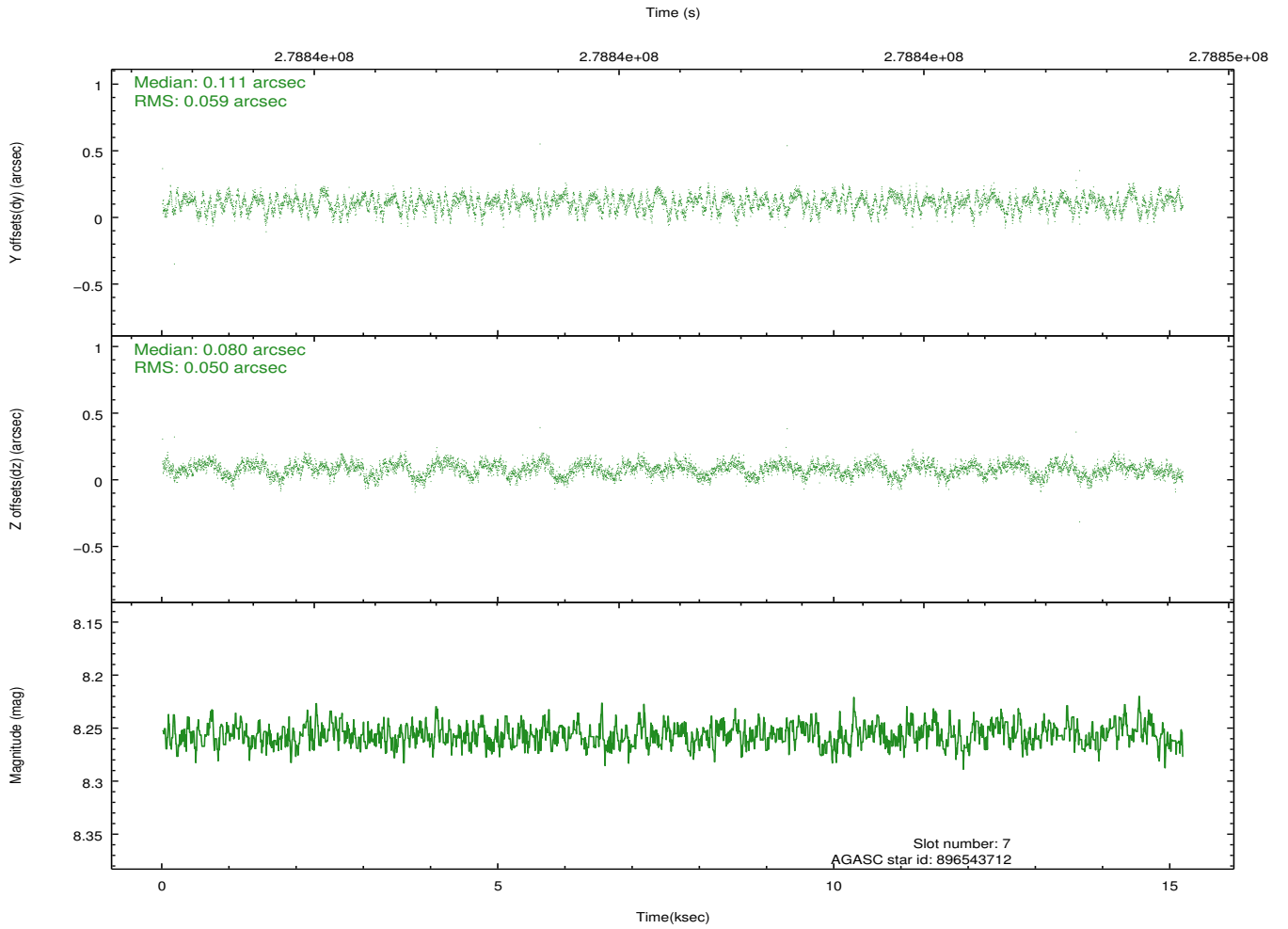
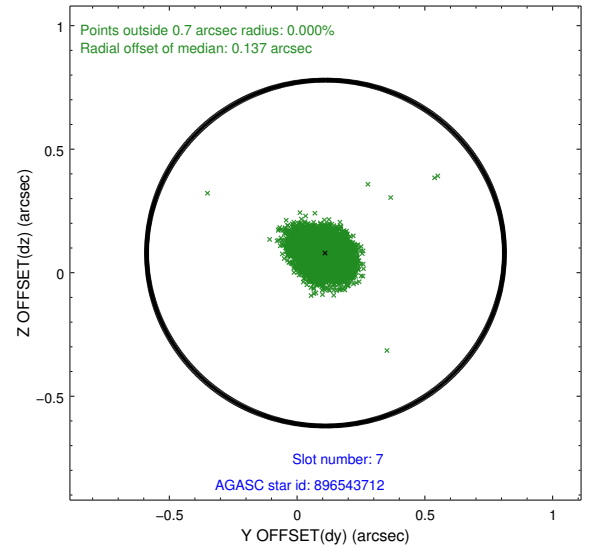
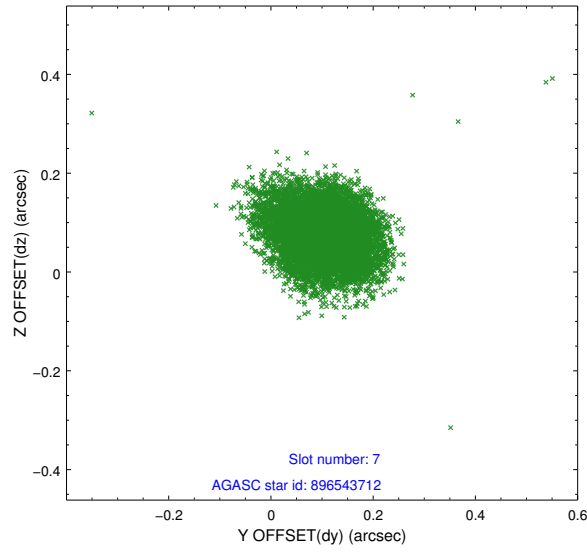
2.4.3 Slot 5



2.4.4 Slot 6

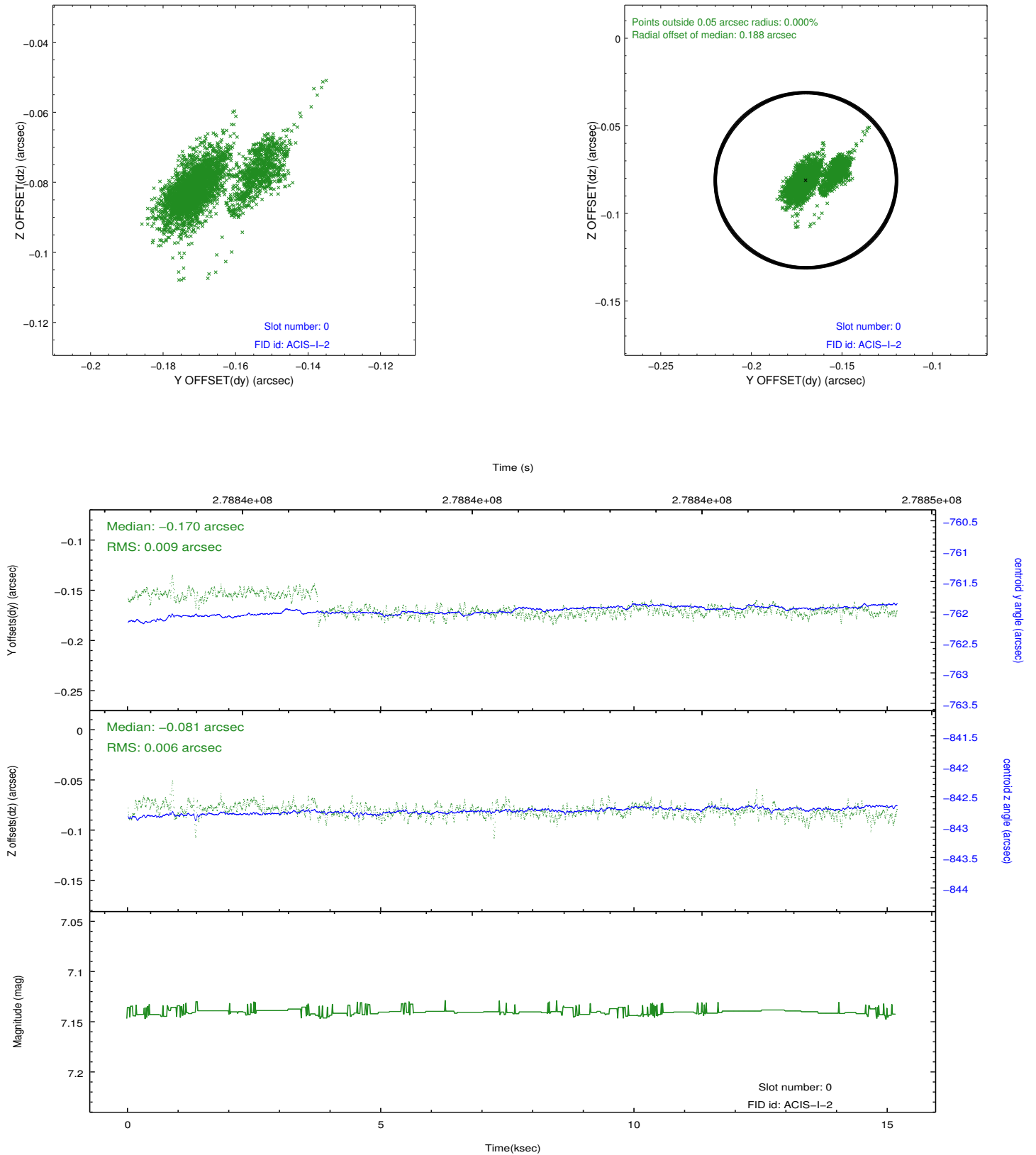


2.4.5 Slot 7

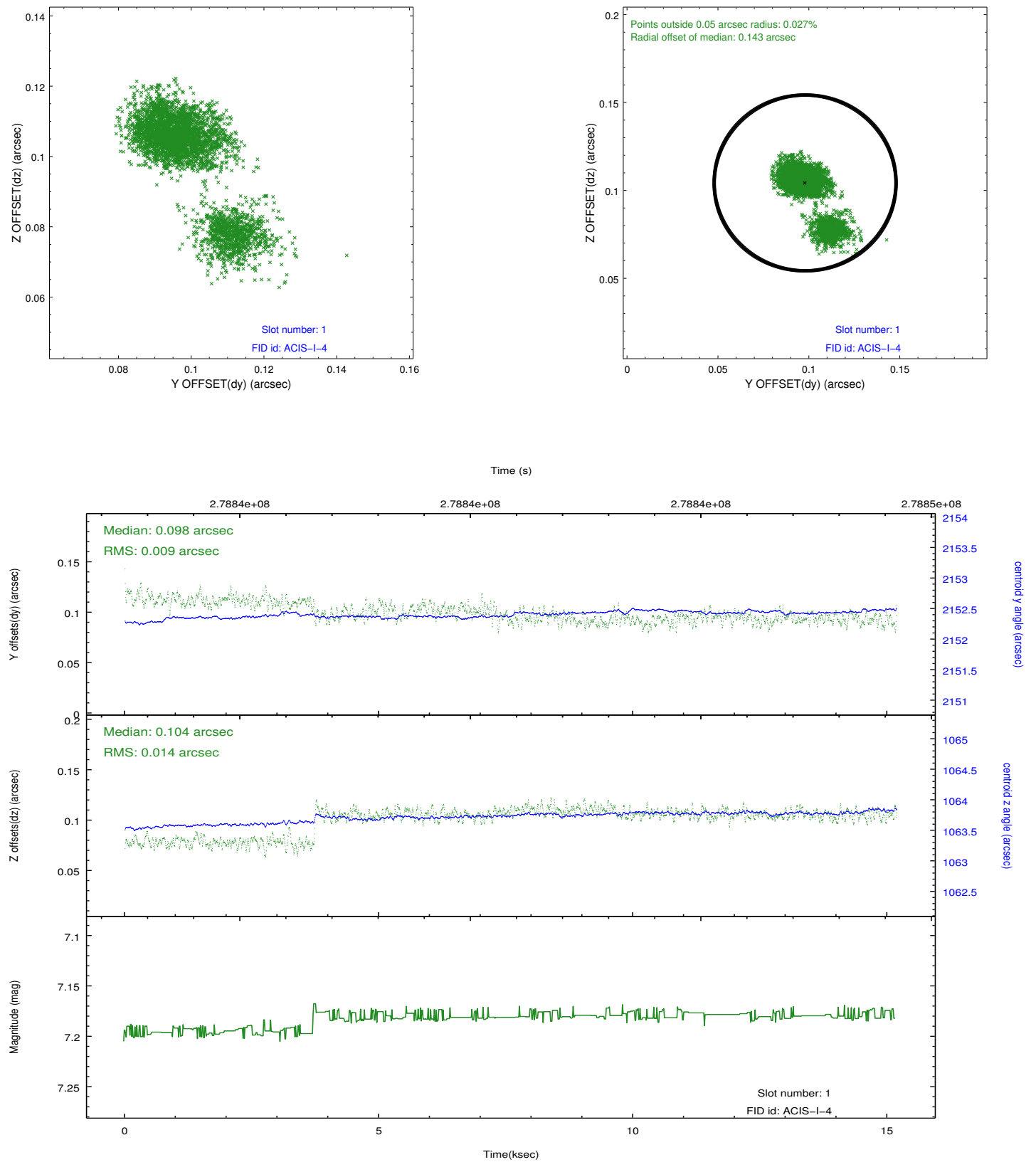


2.5 FID Slots

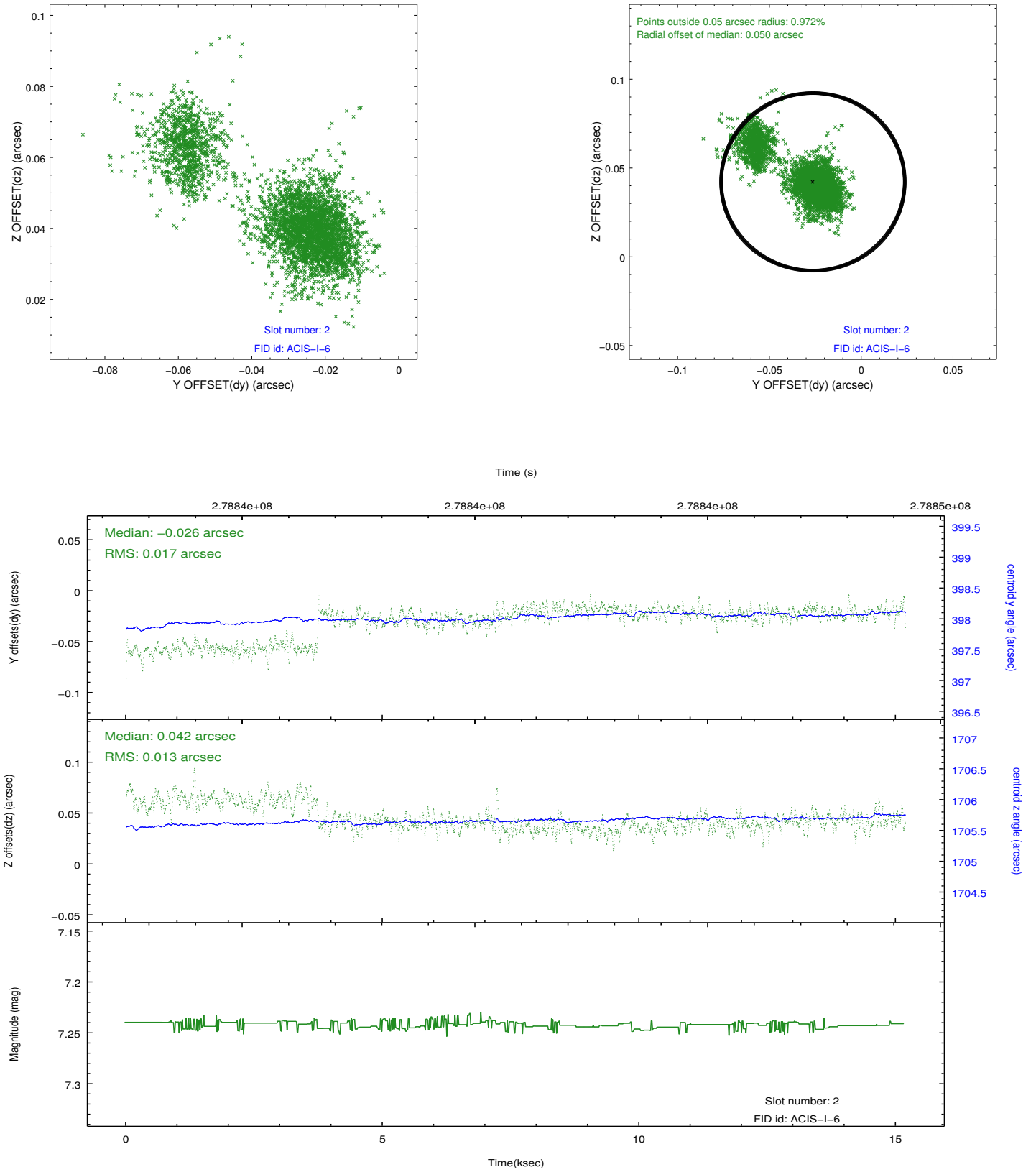
2.5.1 Slot 0



2.5.2 Slot 1



2.5.3 Slot 2



A Summary

A.1 Status

V&V Scientist	Beth Sundheim
V&V Date (YYYY-MM-DD)	2012.04.13
V&V Edition	1
V&V Disposition and Status	OK
V&V Charge Time	14.7901001

A.2 Comments

Joint proposal with NOAO.