

V&V Reference Report

L2 ASCDS Version : 8.4.3.1

Observation 7159 - L2 Version 2
Chandra X-Ray Center

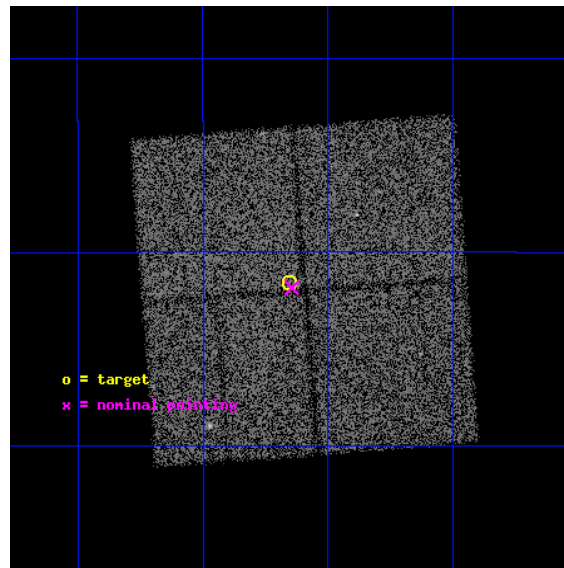
L2 Processing Date : Apr 12 2012

Contents

1	Front	2
2	OBI	3
2.1	OBI	3
2.1.1	Images	3
2.1.2	Bias	3
2.1.3	Parameters	4
2.1.4	Events	4
2.2	Compared Parameters	5
2.3	Aspect	6
2.4	Star Slots	9
2.4.1	Slot 3	9
2.4.2	Slot 4	10
2.4.3	Slot 5	11
2.4.4	Slot 6	12
2.4.5	Slot 7	13
2.5	FID Slots	14
2.5.1	Slot 0	14
2.5.2	Slot 1	15
2.5.3	Slot 2	16
A	Summary	17
A.1	Status	17
A.2	Comments	17

1 Front

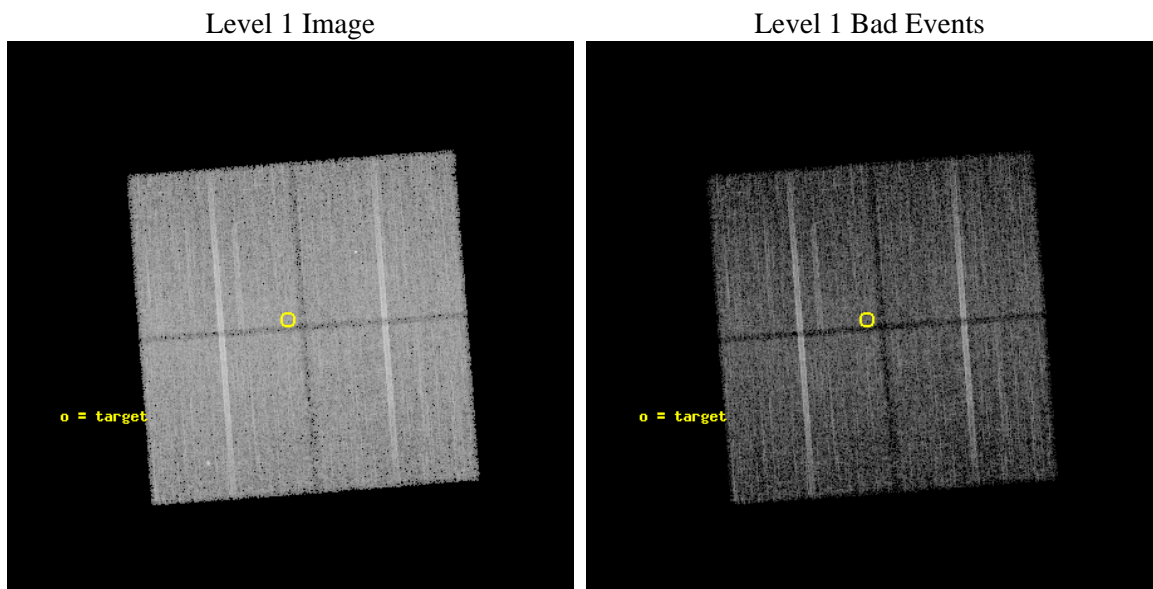
seq_num	600597	Sequence number
obs_id	7159	Observation id
title	Galactic Bulge Latitude Survey	Proposal title
observer	Professor Johnathan Grindlay	Principal investigator
object	GBW3	Source name
dtcycle	0	
cycle	P	events from which exps? Prim/Second/Both
ra_targ	267.28875	Observer's specified target RA [deg]
dec_targ	-29.193361	Observer's specified target Dec [deg]
ra_nom	267.28628786115	Nominal RA [deg]
dec_nom	-29.197472641803	Nominal Dec [deg]
roll_nom	265.60048564404	Nominal Roll [deg]
revision	2	Processing version of data
ontime	13984.059137285	Sum of GTIs [s]
livetime	13801.347109742	Livetime [s]
ontime0	13987.200107574	Sum of GTIs [s]
ontime1	13987.200107574	Sum of GTIs [s]
ontime2	13984.059137225	Sum of GTIs [s]
ontime3	13984.059137285	Sum of GTIs [s]
l2events	65998	Number of level 2 events



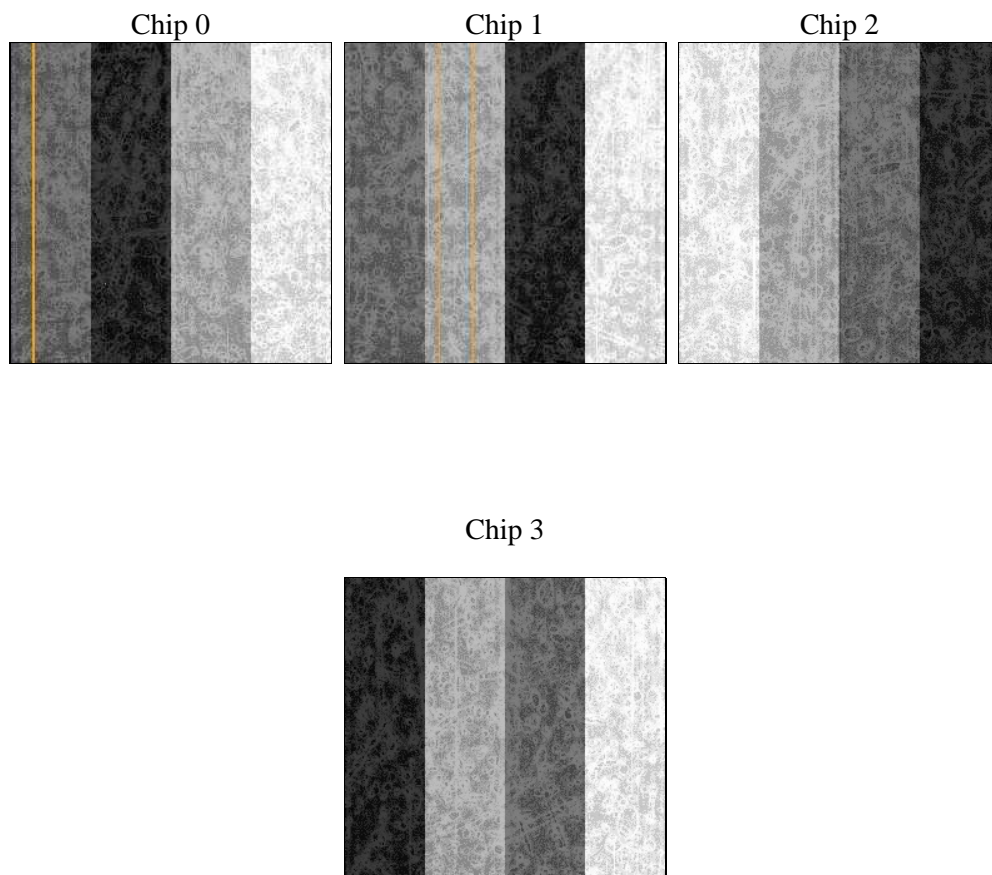
2 OBI

2.1 OBI

2.1.1 Images



2.1.2 Bias



2.1.3 Parameters

obi_num	1	Obi number	sched_exp_time	14200.000000	[s] Scheduled observation exposure time
ascdsver	8.4.3.1	Processing system revision	ontime	13984.059137285	Sum of GTIs [s]
caldsver	4.4.9	 	ontime0	13987.200107574	Sum of GTIs [s]
date	2012-04-12T22:56:16	Date and time of file creation	ontime1	13987.200107574	Sum of GTIs [s]
revision	2	Processing version of data	ontime2	13984.059137225	Sum of GTIs [s]
			ontime3	13984.059137285	Sum of GTIs [s]
			l1events	513778	Number of level 1 events

2.1.4 Events

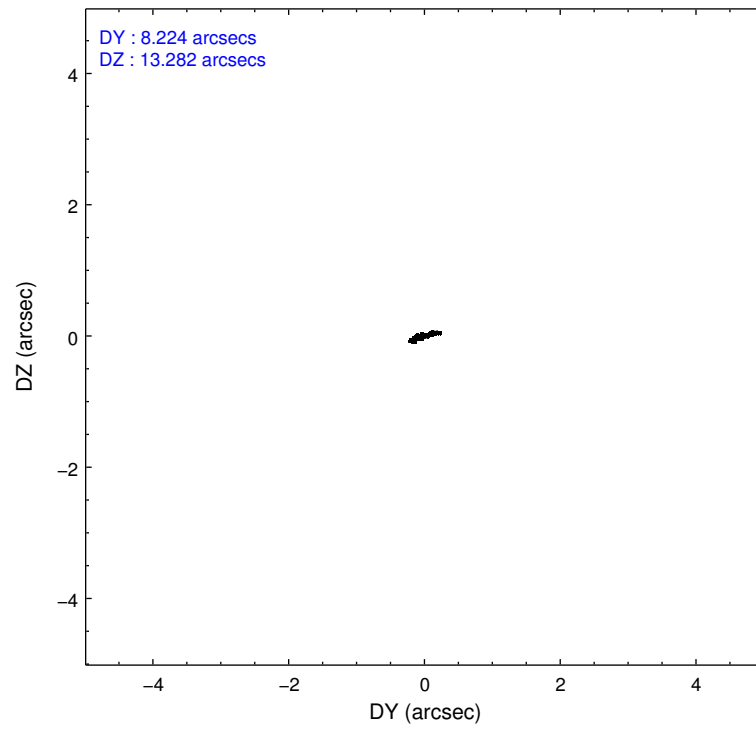
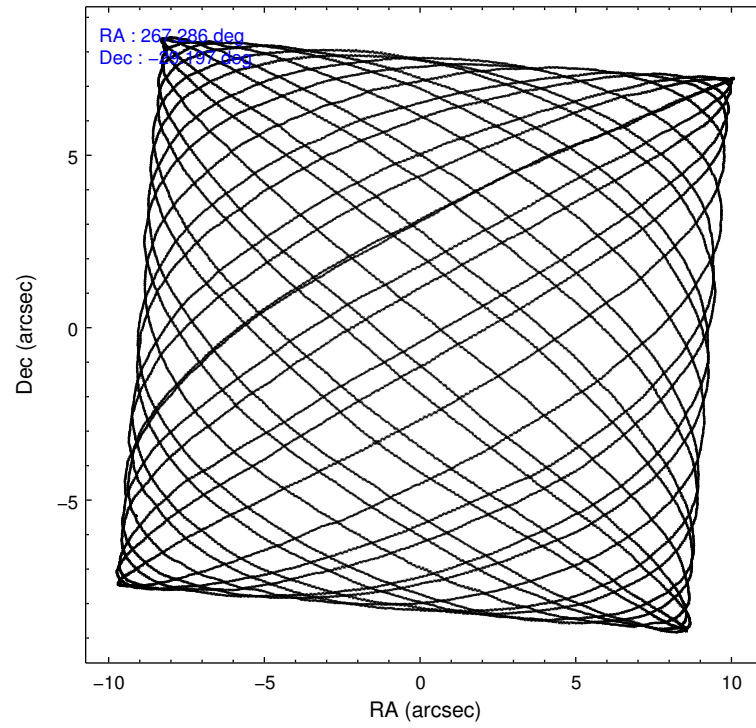
	ccd 0	ccd 1	ccd 2	ccd 3
level 1 events	121376	125768	135242	131392
rejected events	103339	105815	116114	112502
rejected %	85%	84%	85%	85%

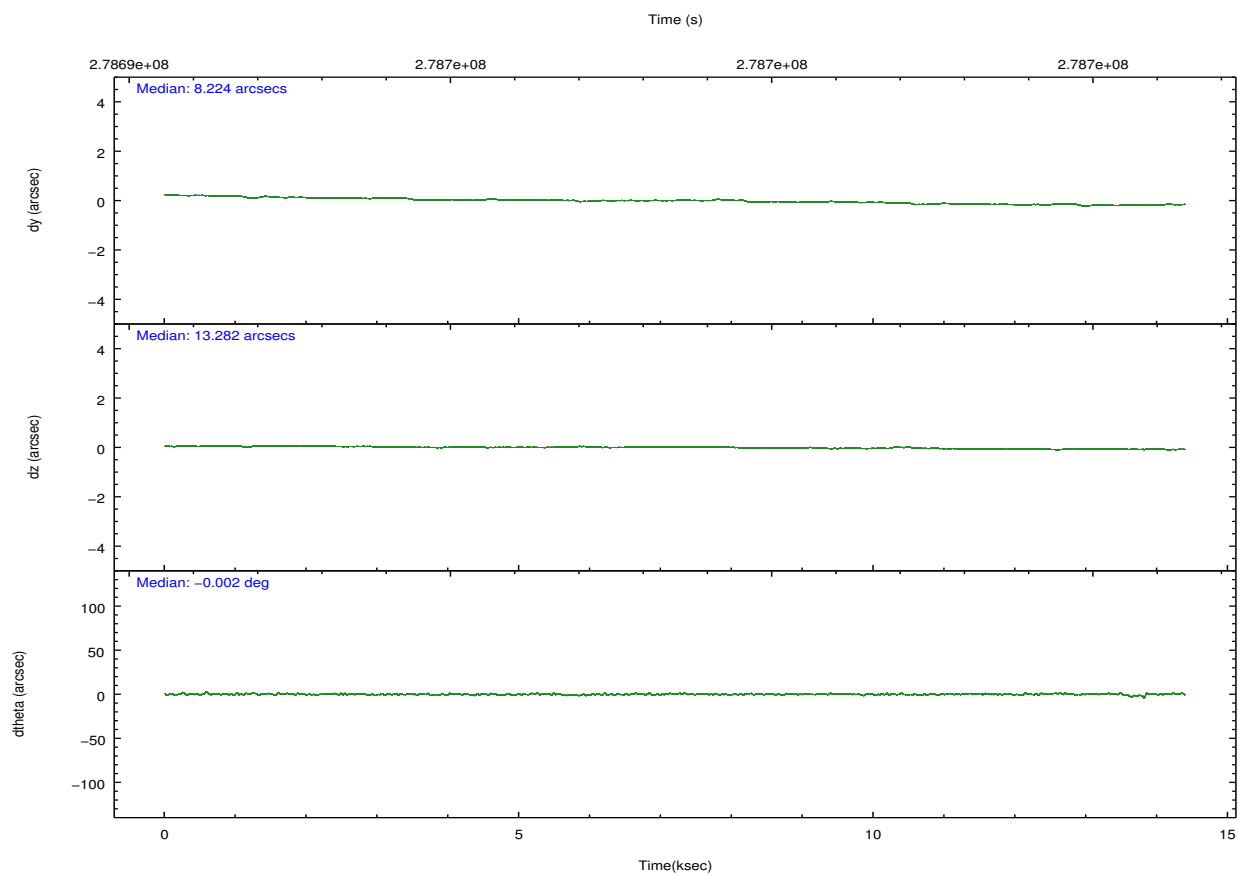
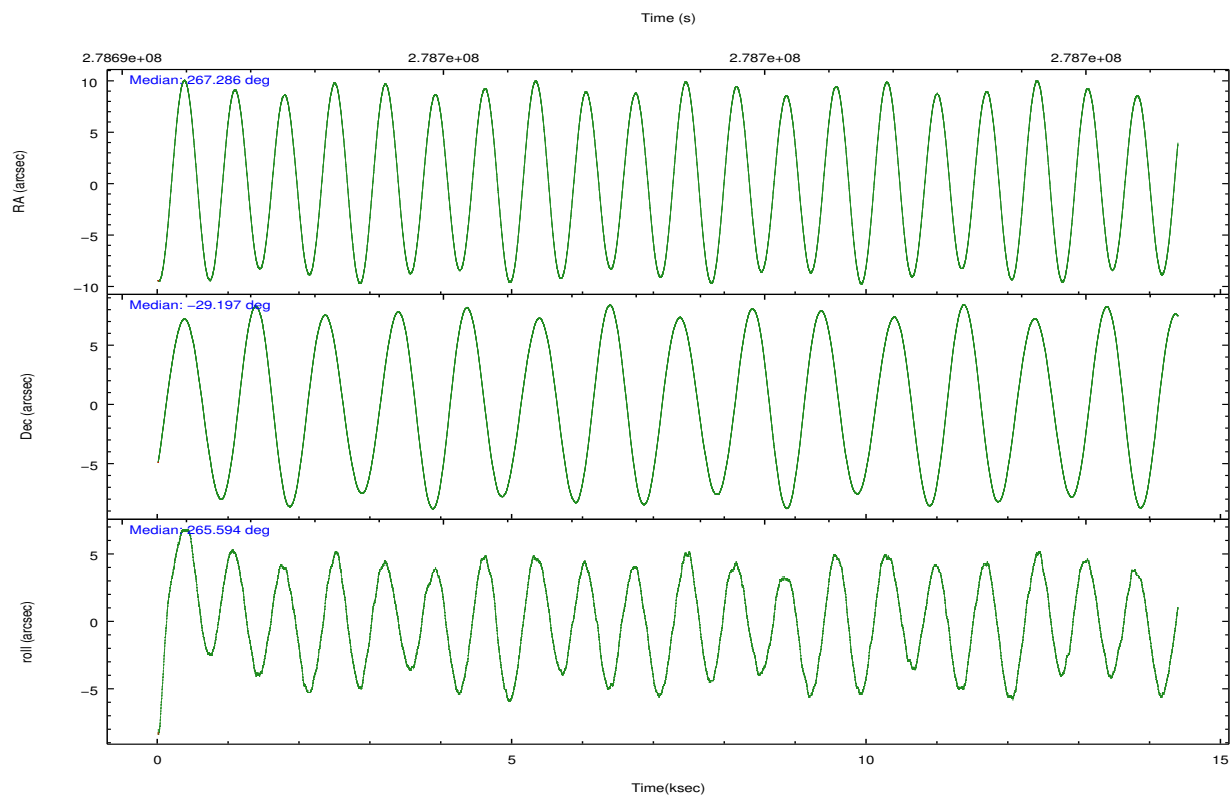
	ccd 0	ccd 1	ccd 2	ccd 3
grade 0 events	8525	9021	9719	9503
	7%	7%	7%	7%
grade 1 events	85	80	98	104
	0%	0%	0%	0%
grade 2 events	3680	4268	3718	3360
	3%	3%	2%	2%
grade 3 events	1614	1766	1527	1562
	1%	1%	1%	1%
grade 4 events	1469	1672	1598	1599
	1%	1%	1%	1%
grade 5 events	4981	5697	4927	5905
	4%	4%	3%	4%
grade 6 events	2755	3234	2570	2871
	2%	2%	1%	2%
grade 7 events	98267	100030	111085	106488
	80%	79%	82%	81%

2.2 Compared Parameters

Parameter	Planned	Actual	Parameter	Planned	Actual
Instrument	ACIS	ACIS	Obspar format version number	7	7
Detector	ACIS-0123	ACIS-0123	Obspar file type	PREDICTED	ACTUAL
Grating	NONE	NONE	Obspar update status	NONE	UPDATED
Data mode	VFAINT	VFAINT	Number of optional ACIS chips dropped	0	0
Observation mode	POINTING	POINTING	On-chip summing requested	N	N
[deg] Pointing RA	267.272647	267.2862878611487	Subarray requested	NONE	NONE
[deg] Pointing Dec	-29.172835	-29.19747264180265	Alternating exposures requested	N	N
[deg] Pointing Roll	265.385150	265.6004856440385	[s] Primary exposure time	0.000000	3.1
[mm] SIM focus pos	-0.782348	-0.7809083437167272			
[mm] SIM defocus	0	0.001439871863259334			
[mm] SIM translation stage pos	-233.592463	-233.5874344608287			
[mm] SIM translation stage offset	0	-0.005018542100998502			
[s] Observation start time (MET)	278691497.184000	278691121.36678			
Observation start date	2006-10-31T14:17:12	2006-10-31T14:12:01			
[s] Observation end time (MET)	278705697.184000	278706991.44253			
Observation end date	2006-10-31T18:13:52	2006-10-31T18:36:31			
Read mode	TIMED	TIMED			

2.3 Aspect



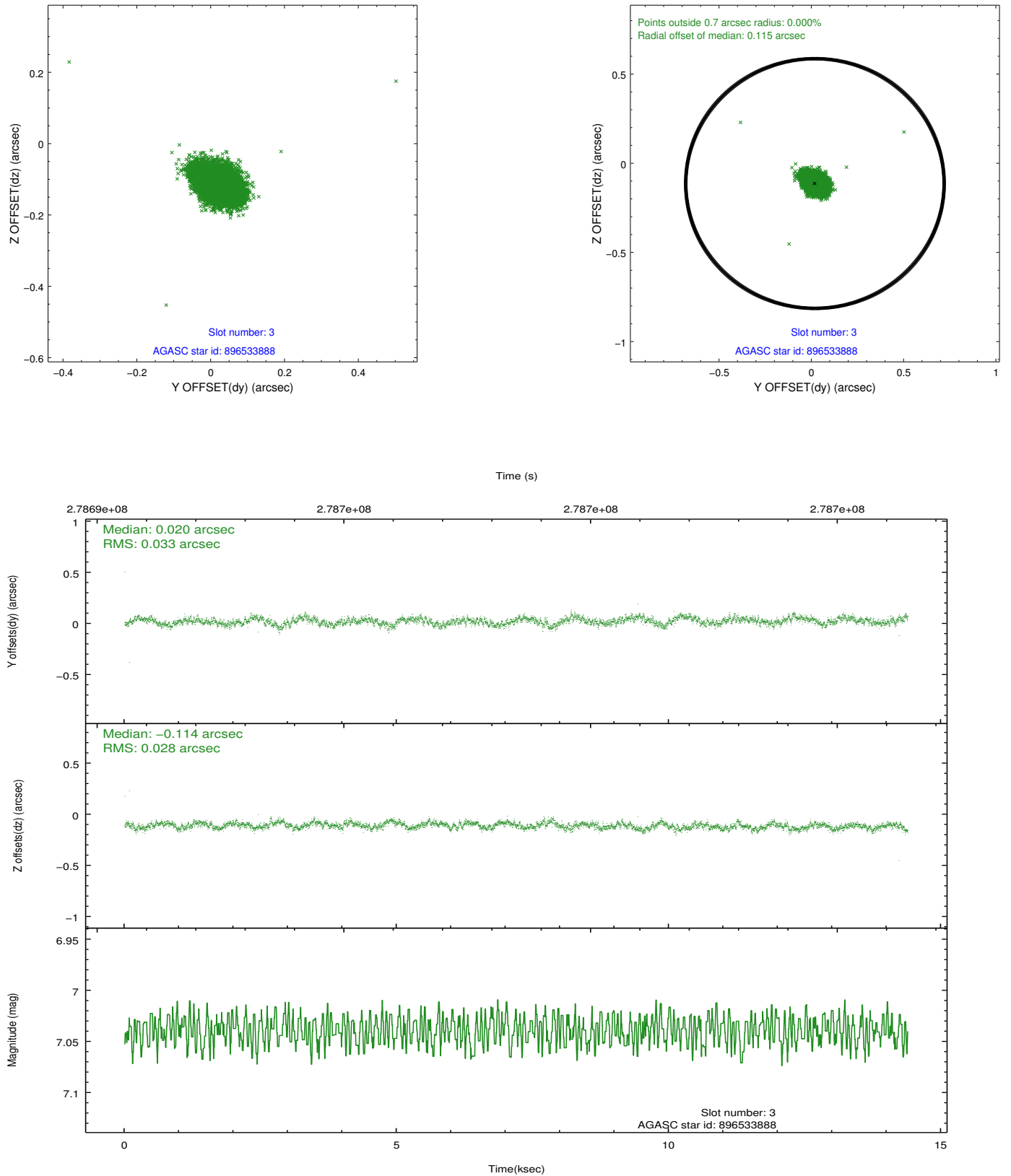


Slot Statistics

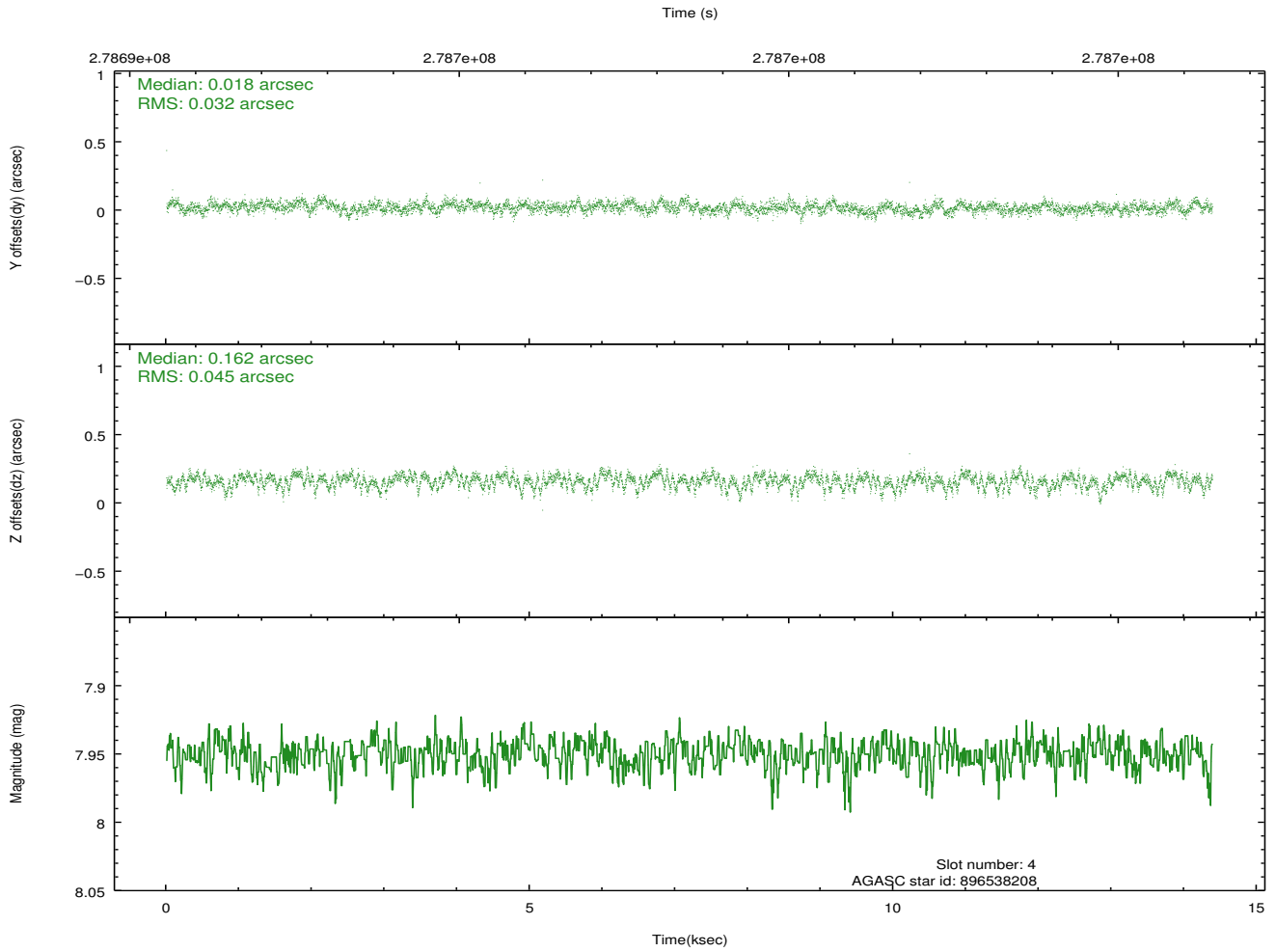
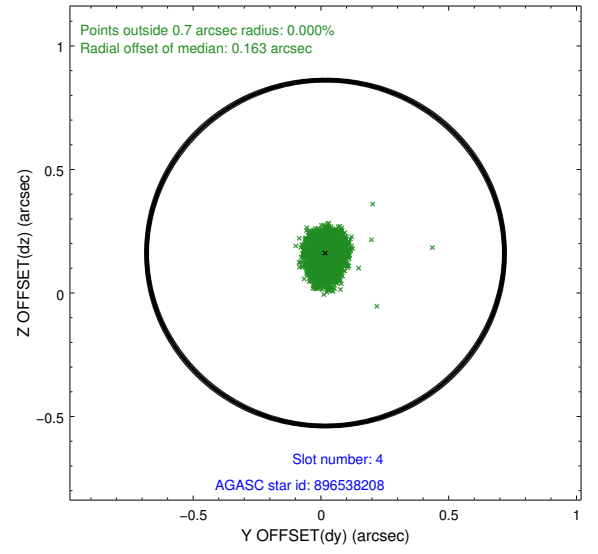
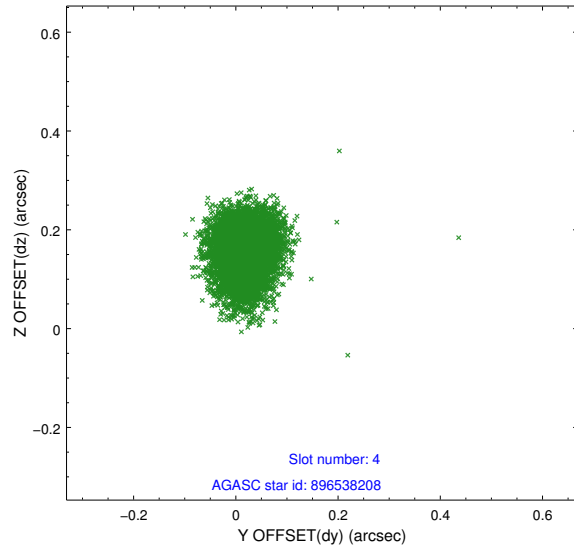
slot	status	id	mag	n_pts	med_dy	med_dz	dr1	dr2	ra	dec	mean_y	mean_z
0	FID	ACIS-I-1	7.24	3510	-0.024	0.005	0.012	0.020	0.000000	0.000000	931.41	-836.83
1	FID	ACIS-I-4	7.19	3509	0.174	0.032	0.012	0.019	0.000000	0.000000	2151.84	1062.83
2	FID	ACIS-I-5	7.23	3510	-0.247	0.034	0.013	0.021	0.000000	0.000000	-1816.39	1061.08
3	GUIDE	896533888	7.04	7018	0.020	-0.114	0.045	0.074	266.666434	-29.392757	947.75	-1830.87
4	GUIDE	896538208	7.95	7017	0.018	0.162	0.058	0.097	267.176969	-28.671626	-1773.41	-446.37
5	GUIDE	896541360	7.74	7016	0.090	-0.125	0.044	0.073	266.684478	-29.453744	1161.47	-1755.77
6	GUIDE	896542048	9.24	7015	0.159	0.083	0.079	0.126	267.742937	-29.132026	-261.85	1462.64
7	GUIDE	898243552	8.75	7012	-0.287	-0.001	0.079	0.129	267.970066	-28.622317	-2146.44	2038.21

2.4 Star Slots

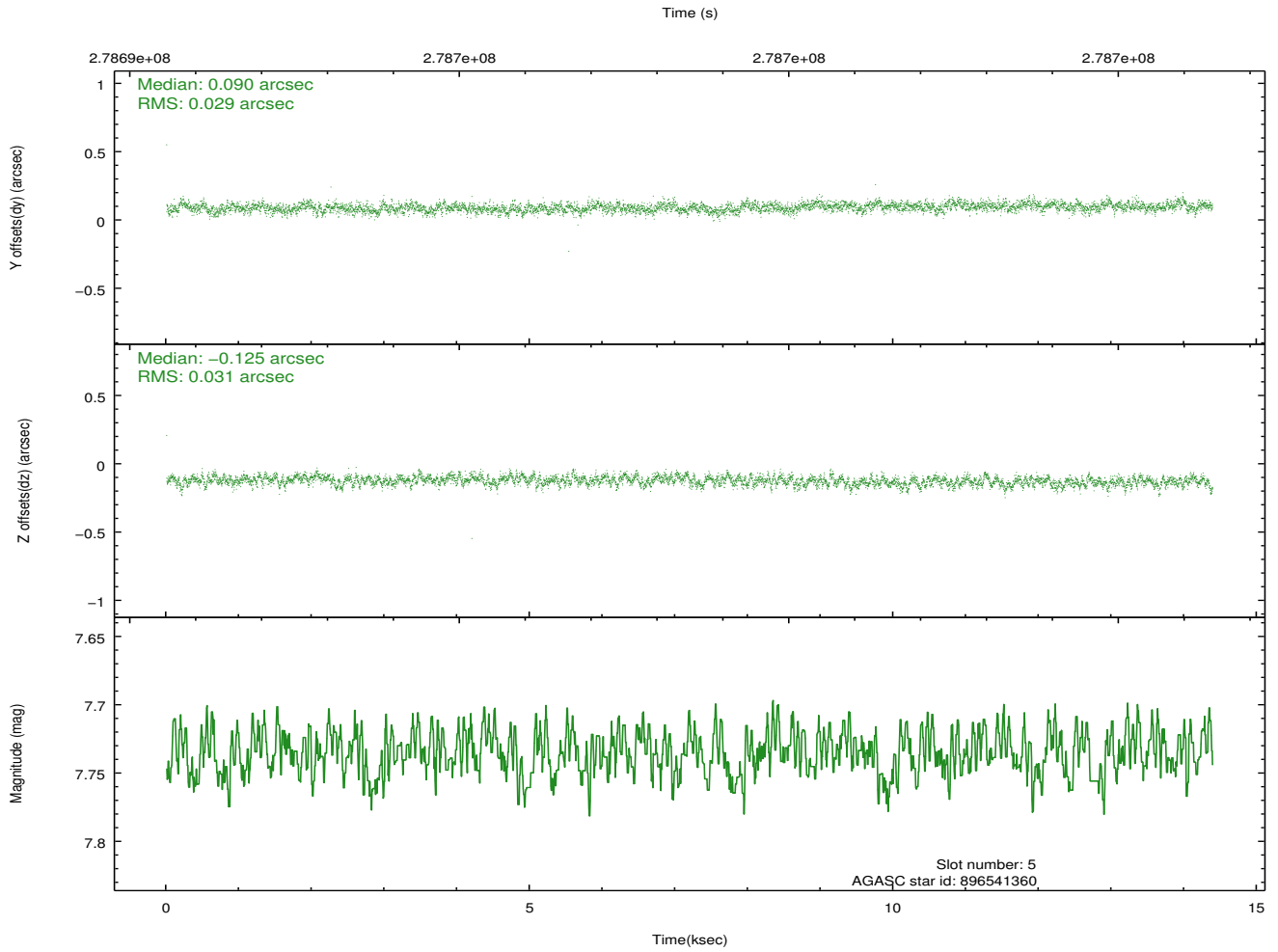
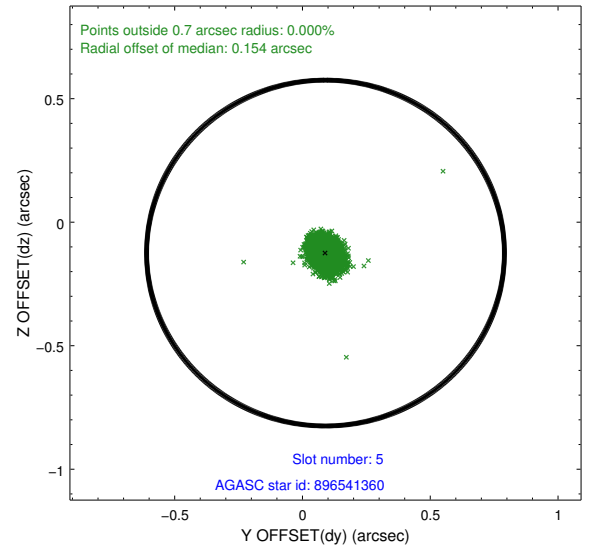
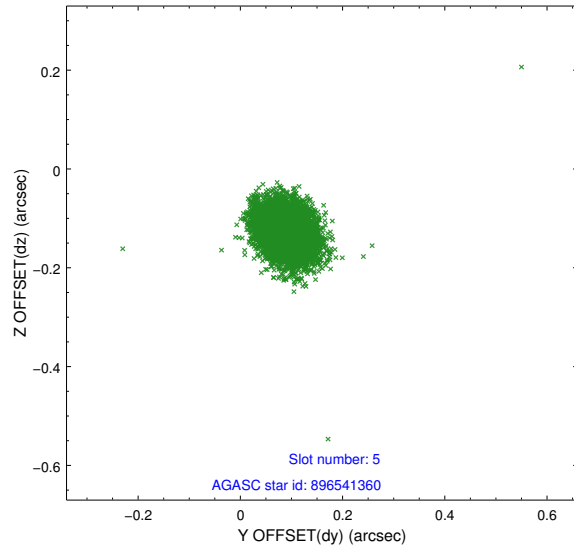
2.4.1 Slot 3



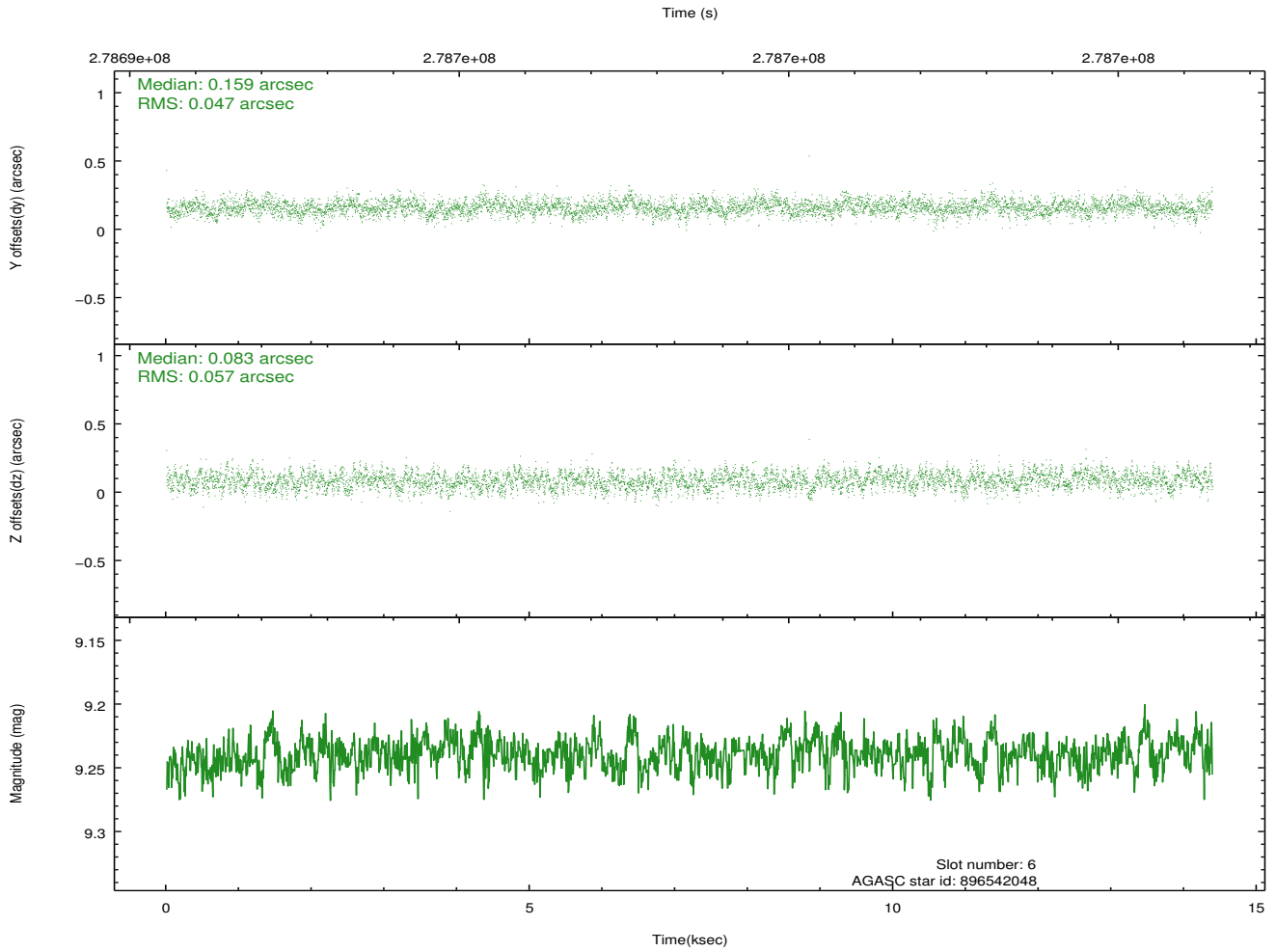
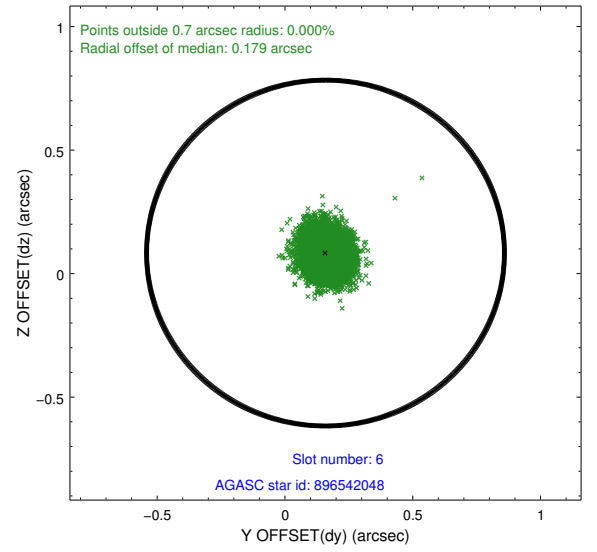
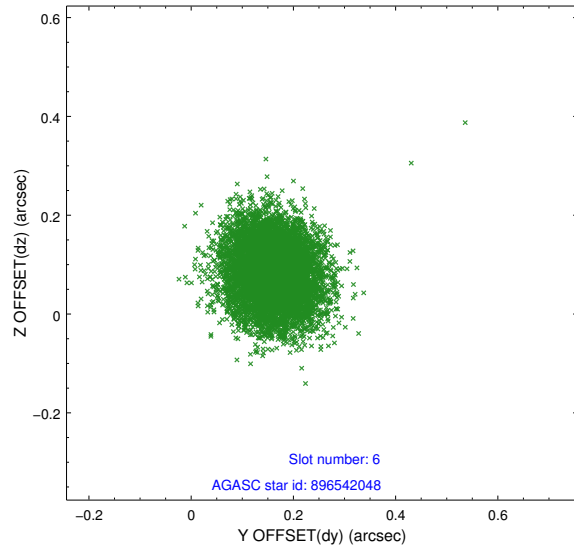
2.4.2 Slot 4



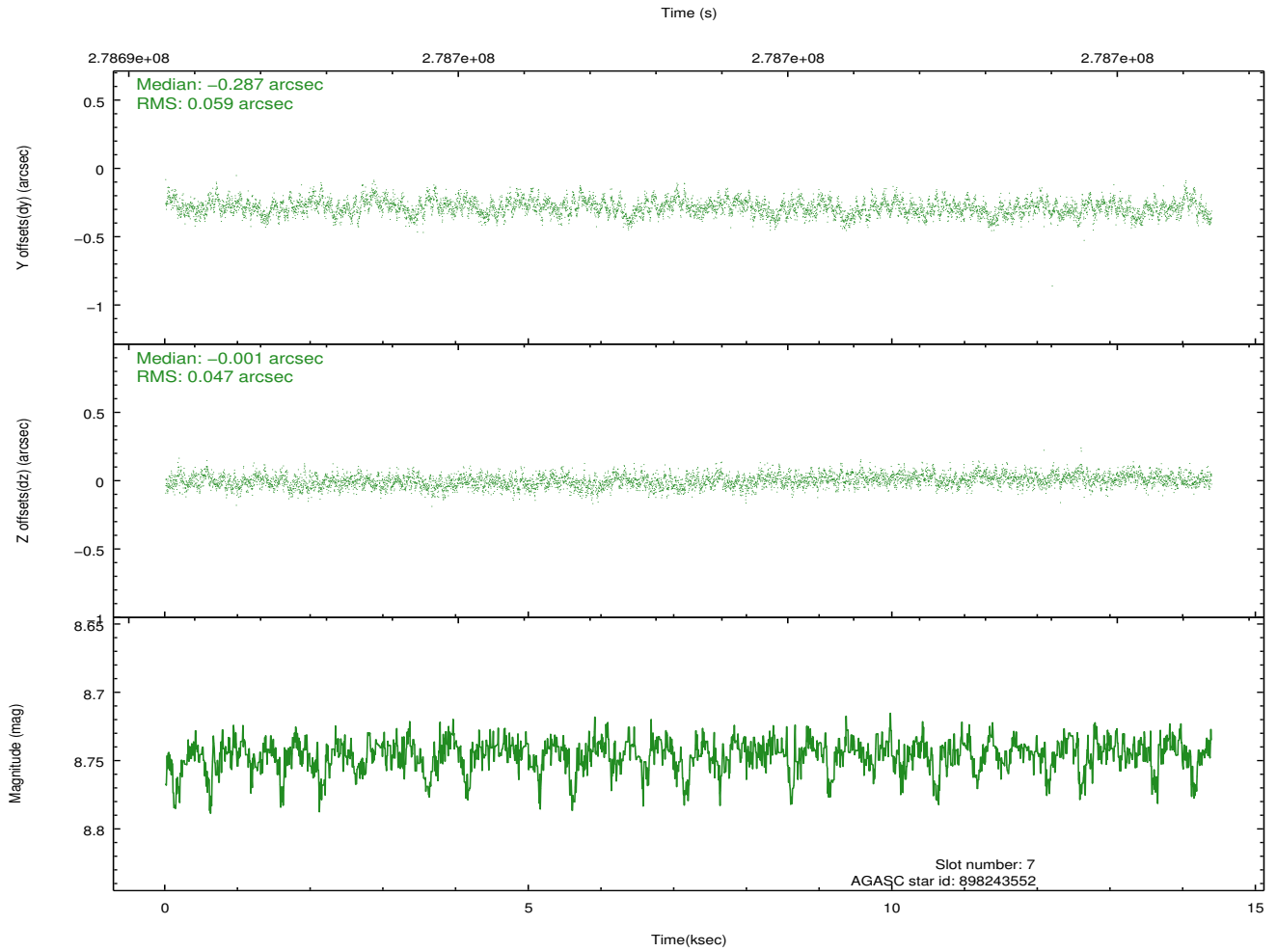
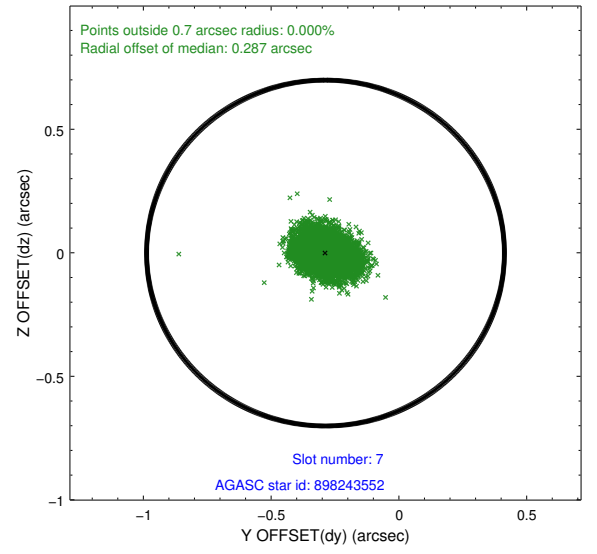
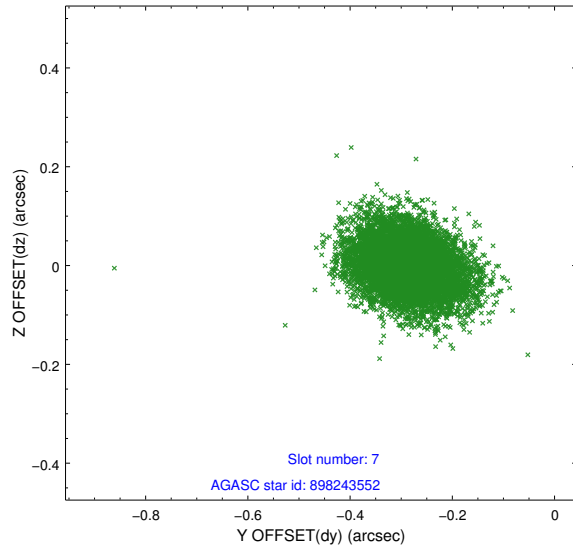
2.4.3 Slot 5



2.4.4 Slot 6

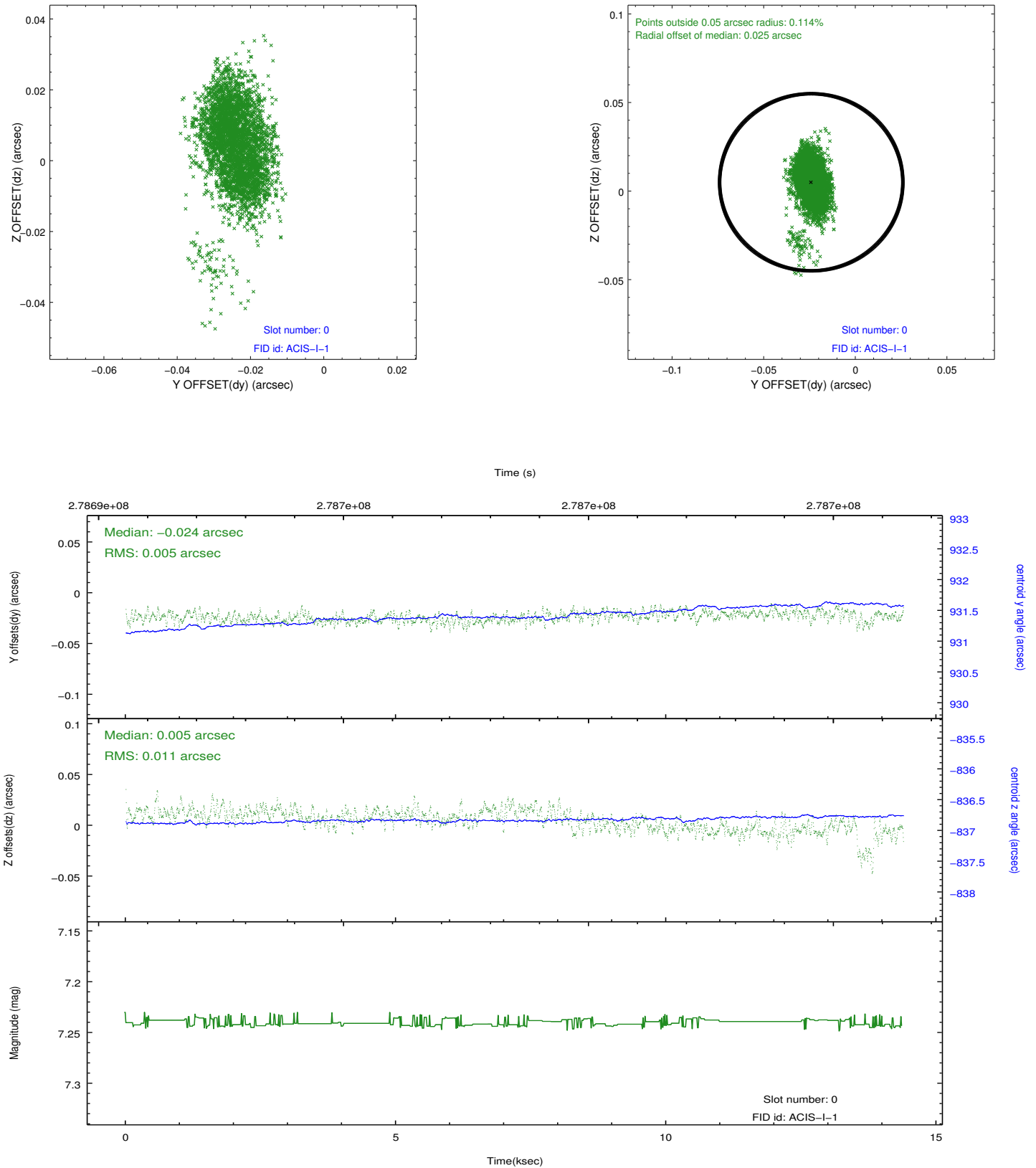


2.4.5 Slot 7

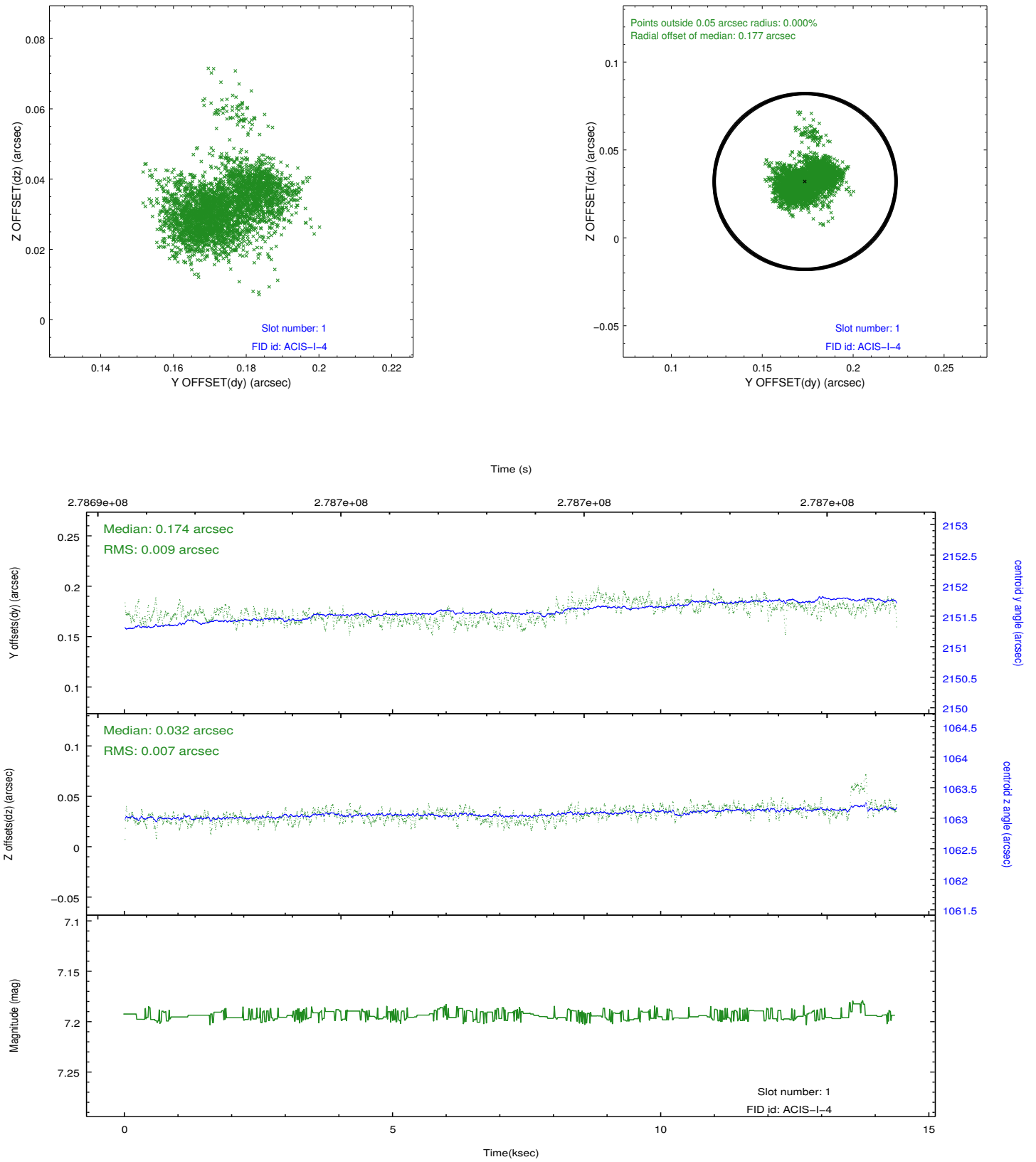


2.5 FID Slots

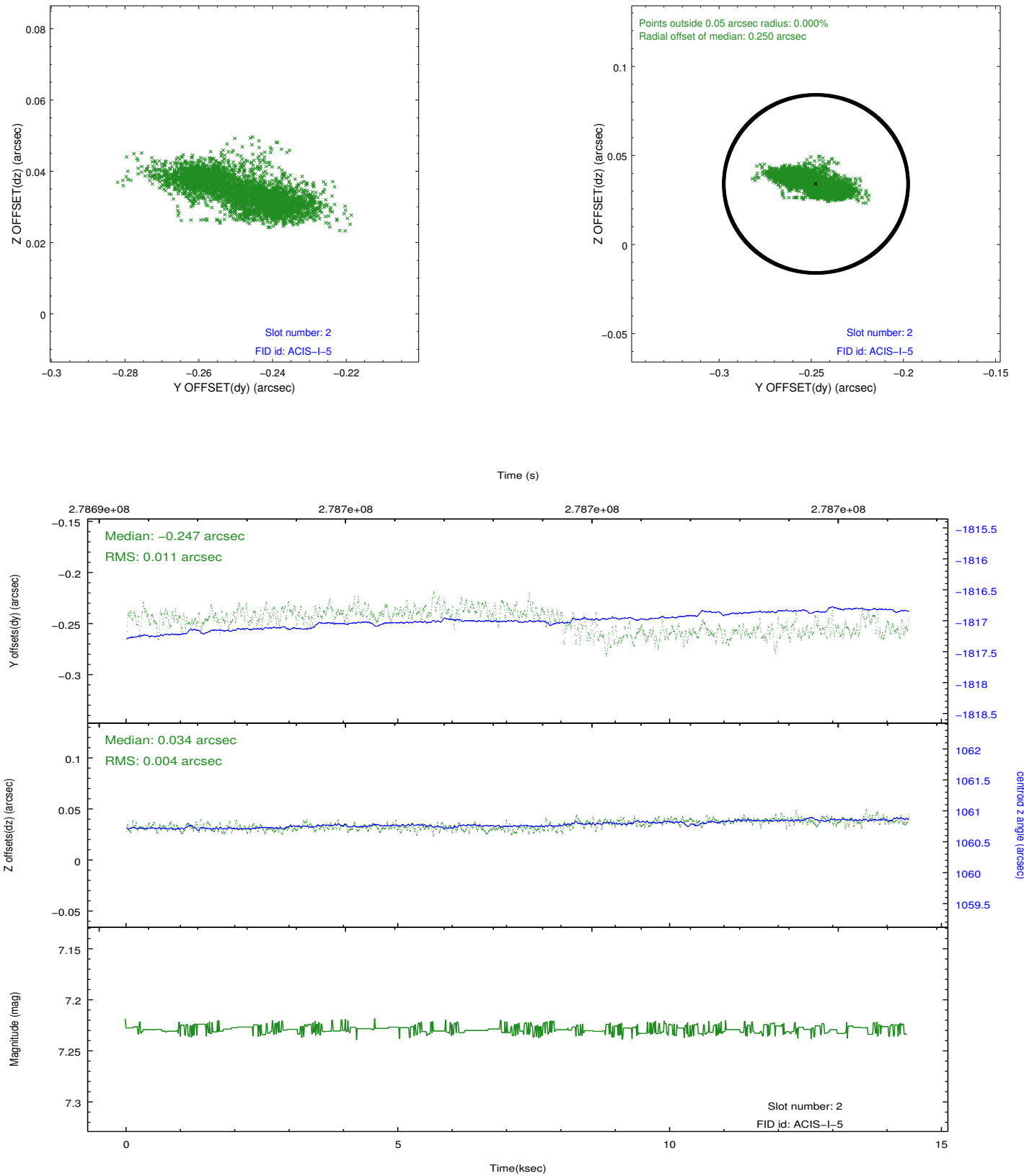
2.5.1 Slot 0



2.5.2 Slot 1



2.5.3 Slot 2



A Summary

A.1 Status

V&V Scientist	Beth Sundheim
V&V Date (YYYY-MM-DD)	2012.04.13
V&V Edition	1
V&V Disposition and Status	OK
V&V Charge Time	13.9840591

A.2 Comments

Joint proposal with NOAO.