

V&V Reference Report

L2 ASCDS Version : 8.4.4

Observation 6720 - L2 Version 3
Chandra X-Ray Center

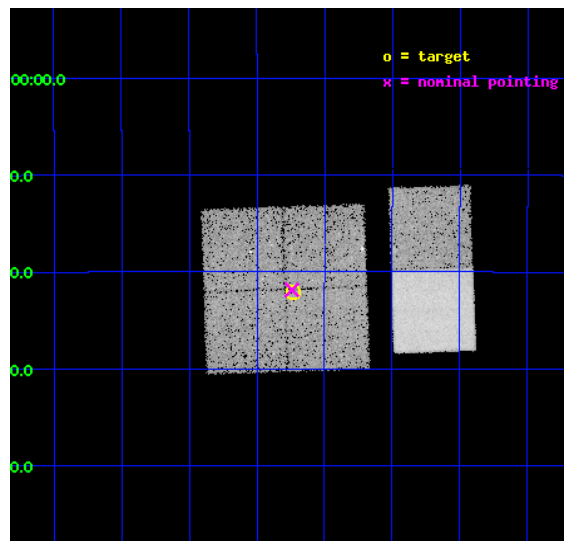
L2 Processing Date : Apr 20 2012

Contents

1	Front	2
2	OBI	3
2.1	OBI	3
2.1.1	Images	3
2.1.2	Bias	3
2.1.3	Parameters	4
2.1.4	Events	4
2.2	Compared Parameters	5
2.3	Aspect	6
2.4	Star Slots	9
2.4.1	Slot 3	9
2.4.2	Slot 4	10
2.4.3	Slot 5	11
2.4.4	Slot 6	12
2.4.5	Slot 7	13
2.5	FID Slots	14
2.5.1	Slot 0	14
2.5.2	Slot 1	15
2.5.3	Slot 2	16
A	Summary	17
A.1	Status	17
A.2	Comments	17

1 Front

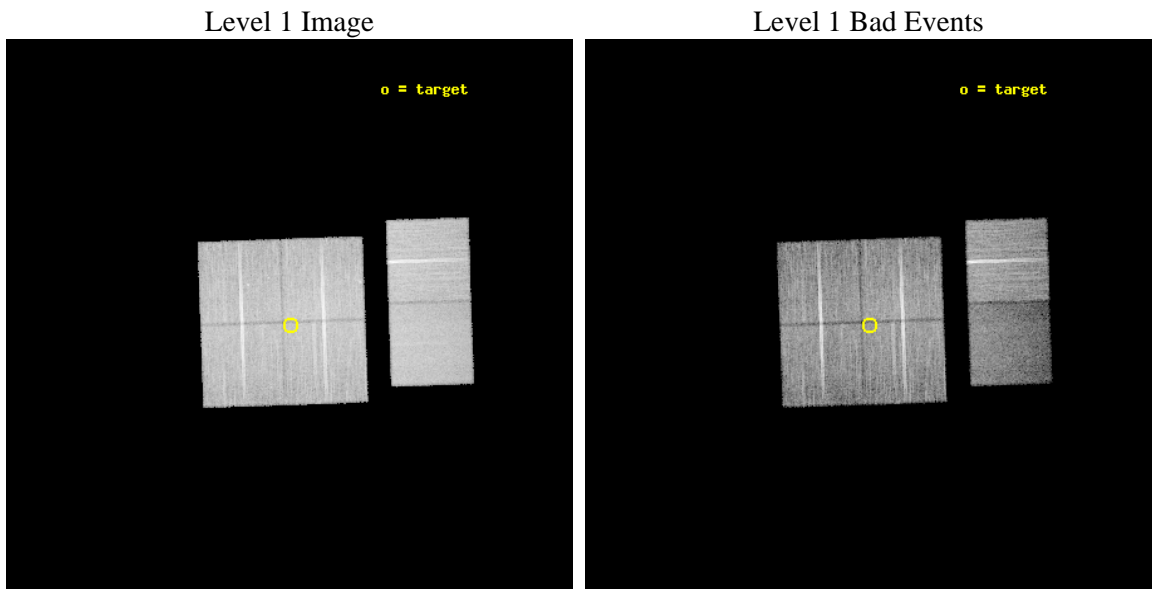
seq_num	500667	Sequence number
obs_id	6720	Observation id
title	Using Chandra to reveal the nature of Galactic VHE particle acceleration sites discovered by H.E.S.S.	Proposal title
observer	Dr. Gerd Puehlhofer	Principal investigator
object	HESS J1809-193	Source name
dtcycle	0	
cycle	P	events from which exps? Prim/Second/Both
ra_targ	272.558333	Observer's specified target RA [deg]
dec_targ	-19.368611	Observer's specified target Dec [deg]
ra_nom	272.56034969995	Nominal RA [deg]
dec_nom	-19.364291791819	Nominal Dec [deg]
roll_nom	88.045770007805	Nominal Roll [deg]
revision	3	Processing version of data
ontime	19139.199928761	Sum of GTIs [s]
livetime	18896.84785502	Livetime [s]
ontime0	19139.199928761	Sum of GTIs [s]
ontime1	19132.717998207	Sum of GTIs [s]
ontime2	19132.717968225	Sum of GTIs [s]
ontime3	19139.199928761	Sum of GTIs [s]
ontime6	19139.199928761	Sum of GTIs [s]
ontime7	19139.199928761	Sum of GTIs [s]
l2events	129380	Number of level 2 events



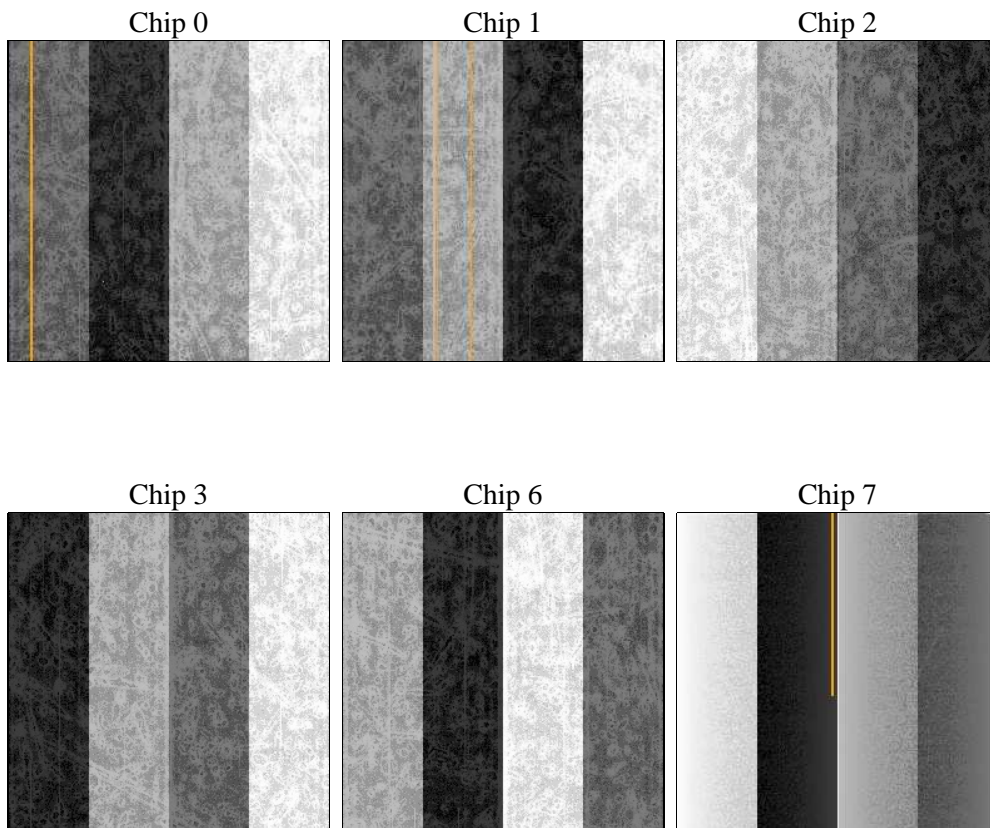
2 OBI

2.1 OBI

2.1.1 Images



2.1.2 Bias



2.1.3 Parameters

obi_num	0	Obi number	sched_exp_time	19000.000000	[s] Scheduled observation exposure time
ascdsver	8.4.4	Processing system revision	ontime	19139.199928761	Sum of GTIs [s]
caldsver	4.4.9	 	ontime0	19139.199928761	Sum of GTIs [s]
date	2012-04-20T03:38:24	Date and time of file creation	ontime1	19132.717998207	Sum of GTIs [s]
revision	3	Processing version of data	ontime2	19132.717968225	Sum of GTIs [s]
			ontime3	19139.199928761	Sum of GTIs [s]
			ontime6	19139.199928761	Sum of GTIs [s]
			ontime7	19139.199928761	Sum of GTIs [s]
			l1events	814716	Number of level 1 events

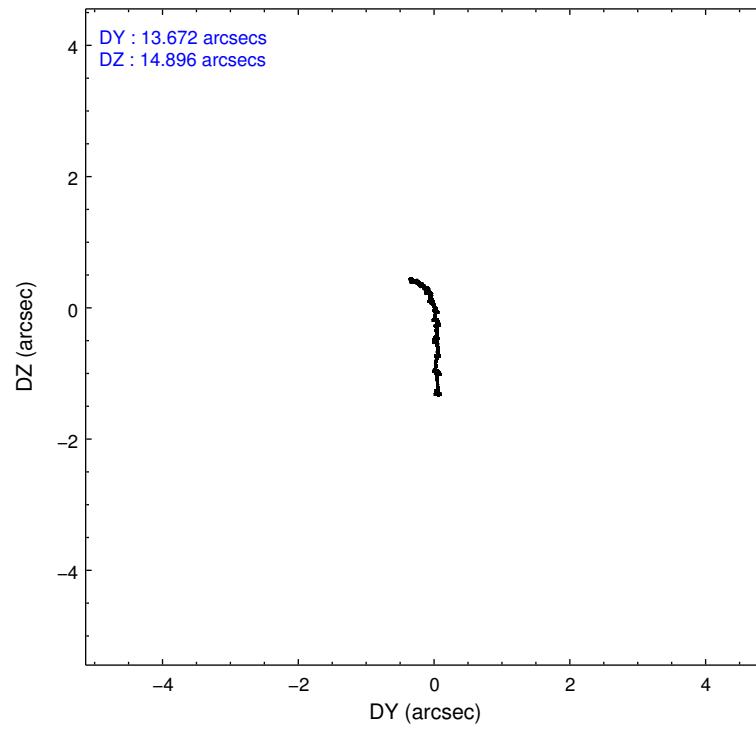
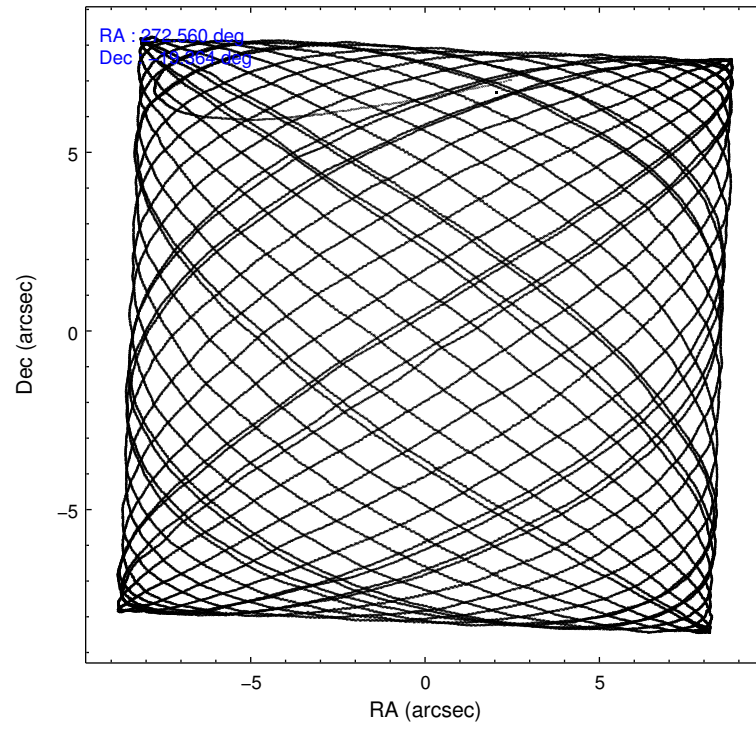
2.1.4 Events

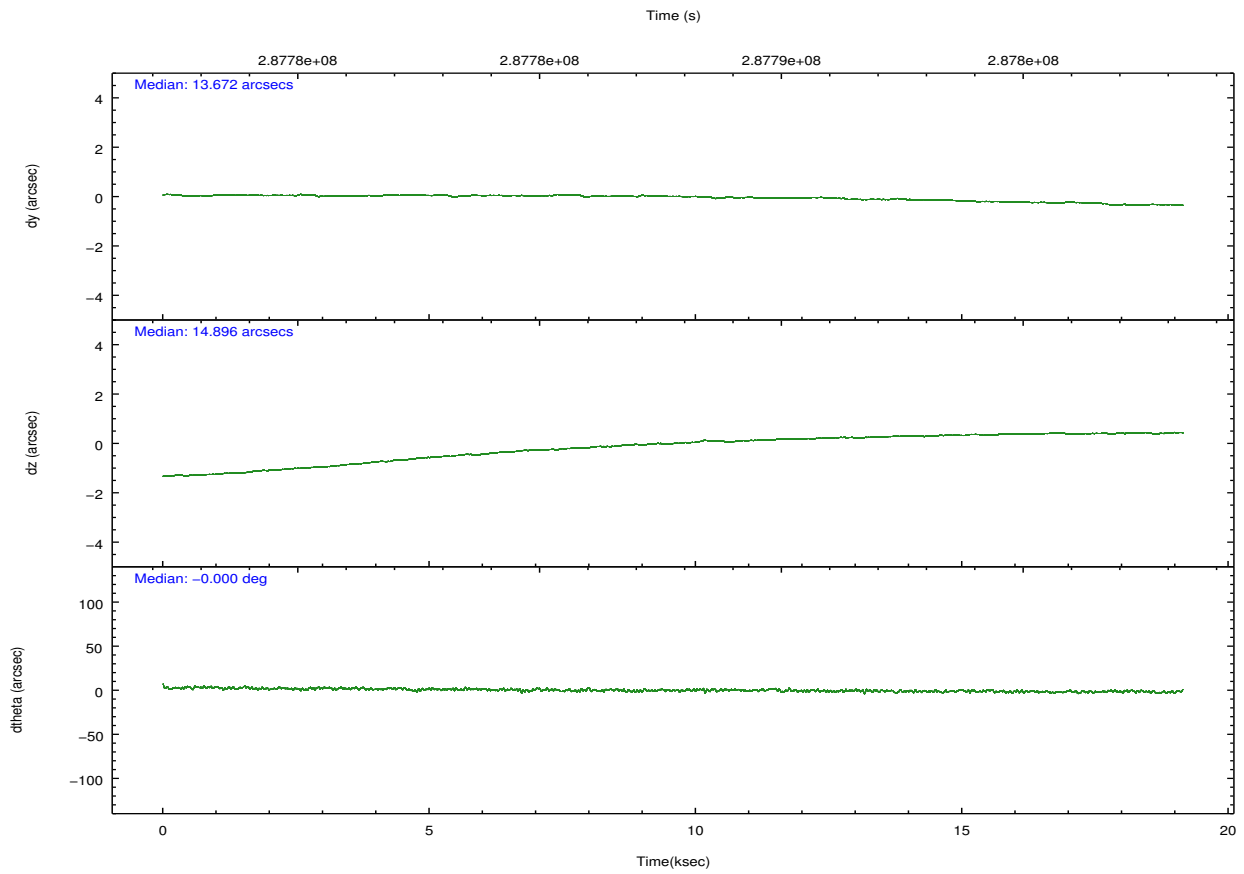
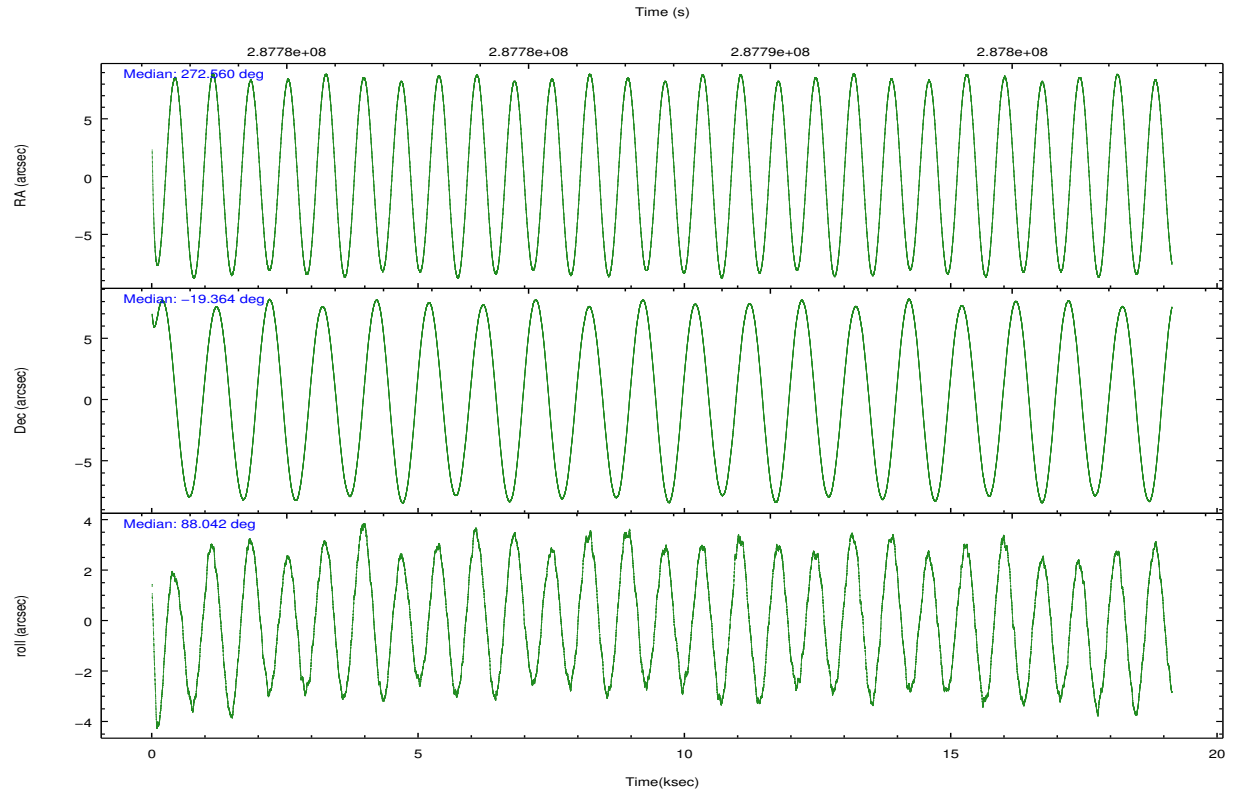
	ccd 0	ccd 1	ccd 2	ccd 3	ccd 6	ccd 7		ccd 0	ccd 1	ccd 2	ccd 3	ccd 6	ccd 7
level 1 events	130035	125078	146850	136136	144380	132237	grade 0 events	7135	6633	7456	6944	6377	6976
rejected events	114101	109281	130609	121022	128945	67248		5%	5%	5%	5%	4%	5%
rejected %	87%	87%	88%	88%	89%	50%	grade 1 events	87	79	94	93	84	192
								0%	0%	0%	0%	0%	0%
							grade 2 events	3488	3203	3473	2929	3251	14084
								2%	2%	2%	2%	2%	10%
							grade 3 events	1630	1705	1526	1494	1524	6215
								1%	1%	1%	1%	1%	4%
							grade 4 events	1492	1681	1559	1514	1605	6324
								1%	1%	1%	1%	1%	4%
							grade 5 events	3836	4392	3742	4527	4844	13987
								2%	3%	2%	3%	3%	10%
							grade 6 events	2462	2901	2480	2472	2924	32506
								1%	2%	1%	1%	2%	24%
							grade 7 events	109905	104484	126520	116163	123771	51953
								84%	83%	86%	85%	85%	39%

2.2 Compared Parameters

Parameter	Planned	Actual	Parameter	Planned	Actual
Instrument	ACIS	ACIS	Obspar format version number	7	7
Detector	ACIS-012367	ACIS-012367	Obspar file type	PREDICTED	ACTUAL
Grating	NONE	NONE	Obspar update status	NONE	UPDATED
Data mode	VFAINT	VFAINT	Number of optional ACIS chips dropped	0	0
Observation mode	POINTING	POINTING	On-chip summing requested	N	N
[deg] Pointing RA	272.574158	272.5603496999525	Subarray requested	NONE	NONE
[deg] Pointing Dec	-19.388517	-19.36429179181905	Alternating exposures requested	N	N
[deg] Pointing Roll	87.841669	88.04577000780479	[s] Primary exposure time	0.000000	3.2
[mm] SIM focus pos	-0.782348	-0.7809083437167272			
[mm] SIM defocus	0	0.001439871863259334			
[mm] SIM translation stage pos	-233.592463	-233.5874344608287			
[mm] SIM translation stage offset	0	-0.005018542100998502			
[s] Observation start time (MET)	287778328.184000	287777110.78434			
Observation start date	2007-02-13T18:24:23	2007-02-13T18:05:10			
[s] Observation end time (MET)	287797328.184000	287797700.98532			
Observation end date	2007-02-13T23:41:03	2007-02-13T23:48:20			
Read mode	TIMED	TIMED			

2.3 Aspect



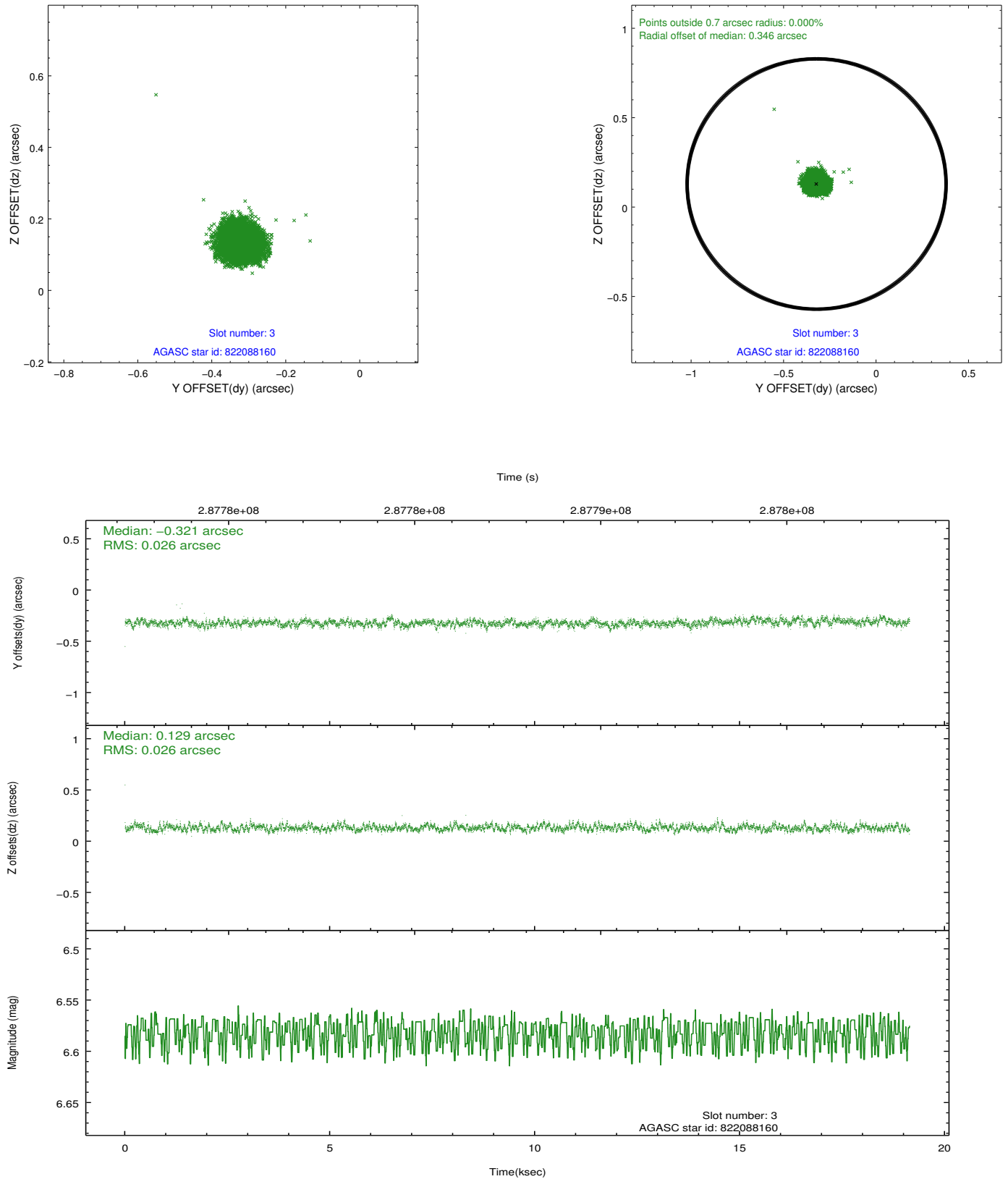


Slot Statistics

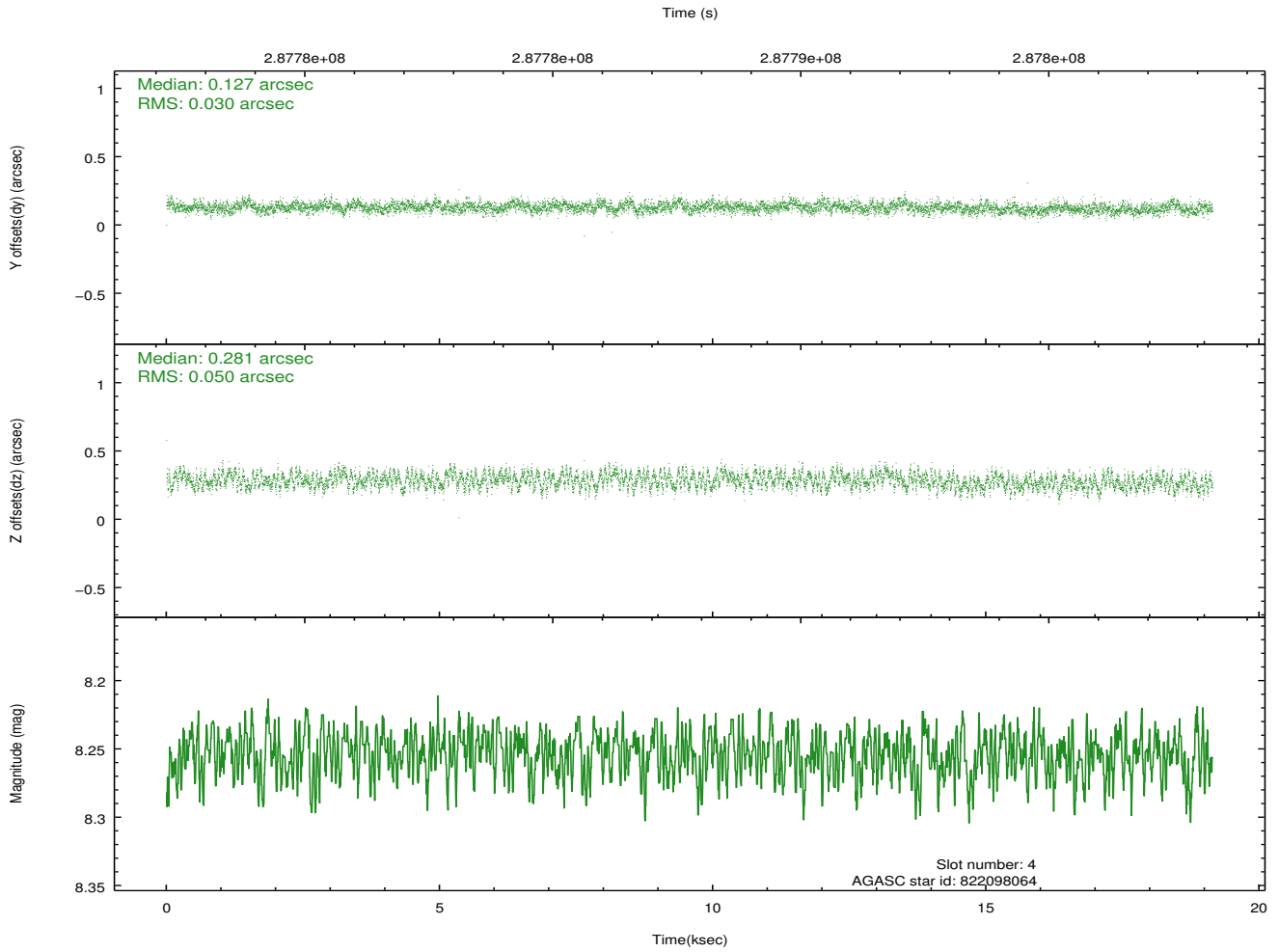
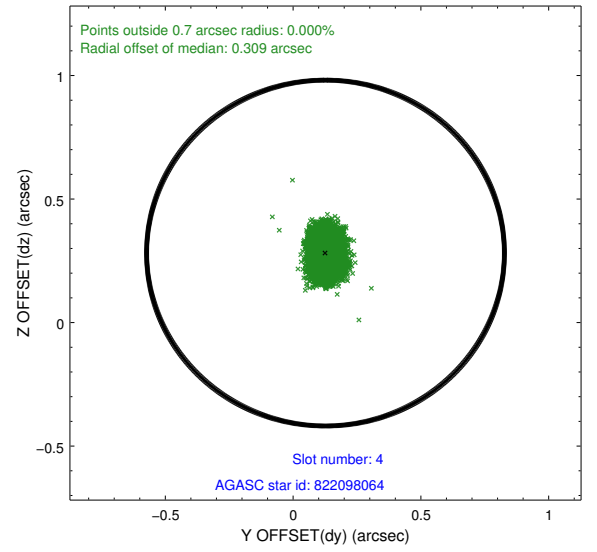
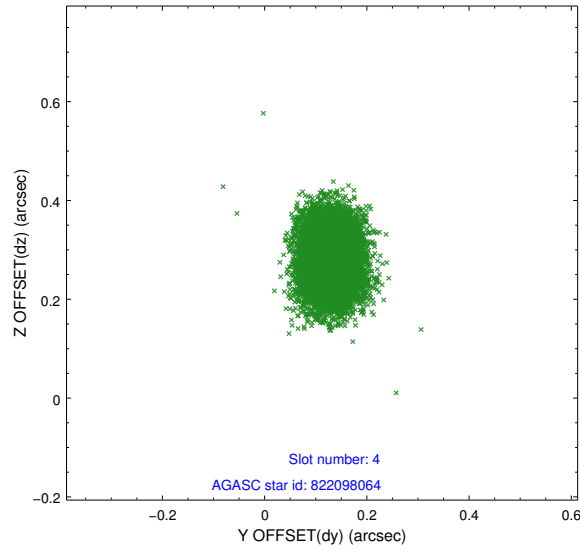
slot	status	id	mag	n_pts	med_dy	med_dz	dr1	dr2	ra	dec	mean_y	mean_z
0	FID	ACIS-I-1	7.23	4670	-0.046	0.048	0.024	0.036	0.000000	0.000000	925.81	-838.28
1	FID	ACIS-I-2	7.14	4670	-0.165	-0.085	0.012	0.019	0.000000	0.000000	-768.28	-844.91
2	FID	ACIS-I-4	7.17	4670	0.112	0.101	0.017	0.036	0.000000	0.000000	2145.82	1061.44
3	GUIDE	822088160	6.58	9340	-0.321	0.129	0.039	0.063	272.729284	-18.869551	1886.45	-457.26
4	GUIDE	822098064	8.25	9337	0.127	0.281	0.062	0.100	273.233974	-19.745214	-1202.73	-2282.30
5	GUIDE	822098736	8.48	9334	0.164	-0.101	0.060	0.099	272.269355	-19.875225	-1790.63	964.93
6	GUIDE	822100176	8.48	9332	0.249	-0.150	0.059	0.095	272.112888	-19.868886	-1789.00	1495.48
7	GUIDE	822091704	8.10	9331	-0.219	-0.159	0.062	0.100	272.220028	-18.943658	1553.35	1265.59

2.4 Star Slots

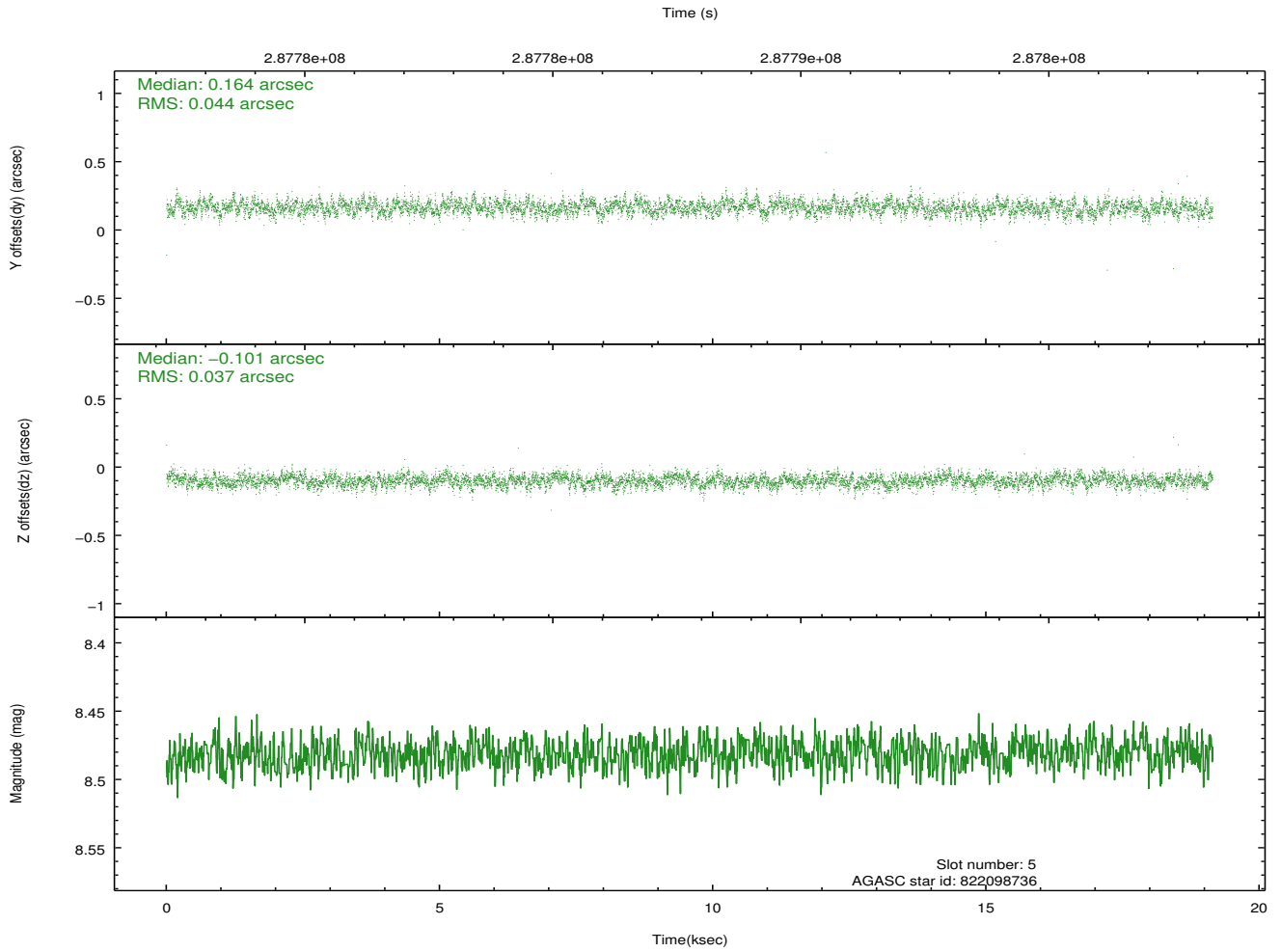
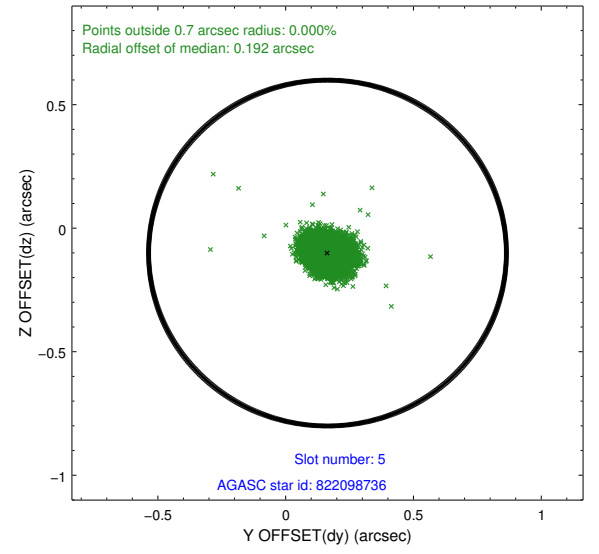
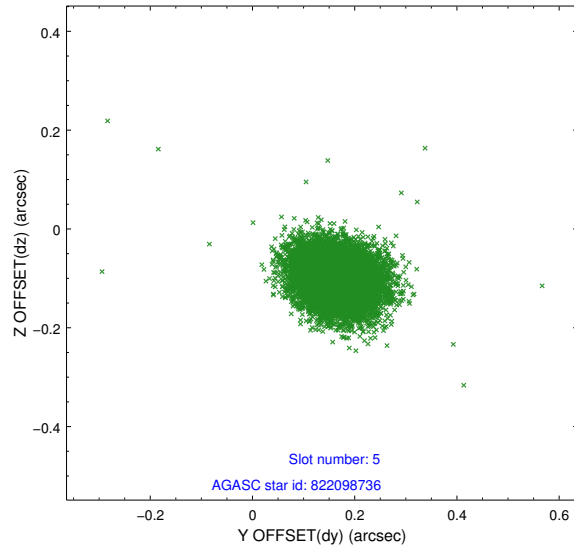
2.4.1 Slot 3



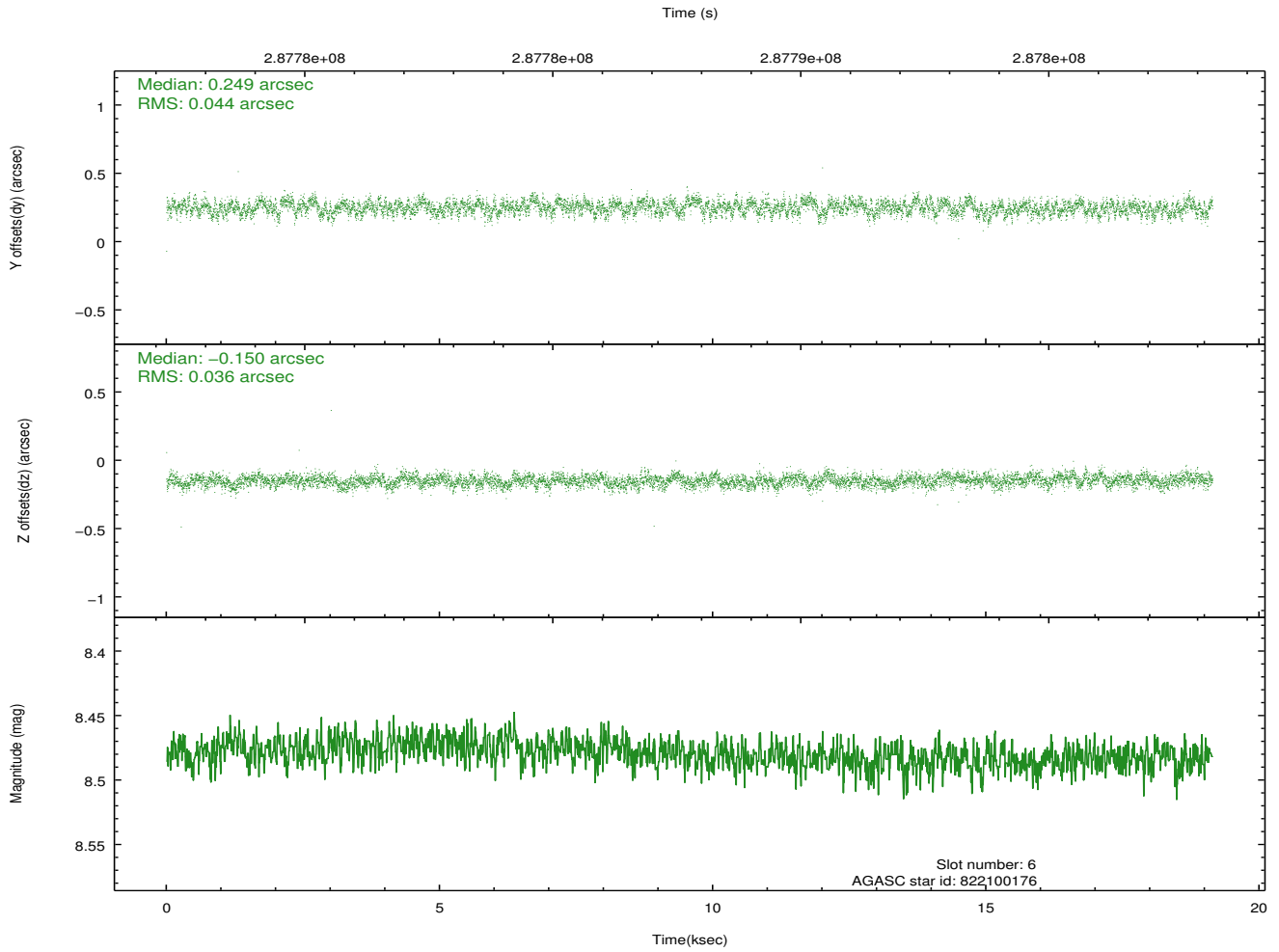
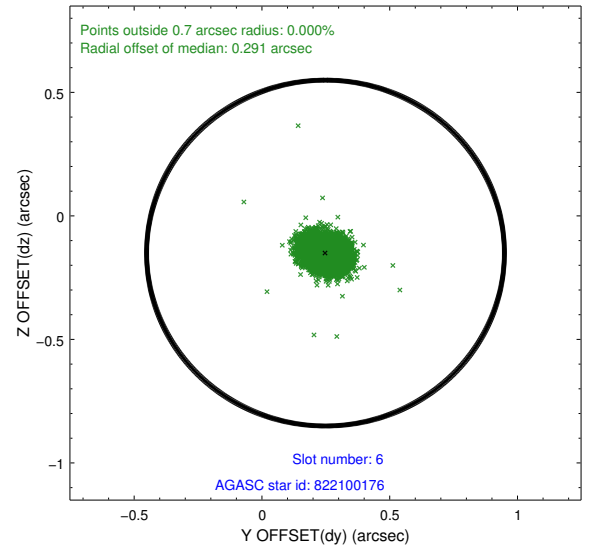
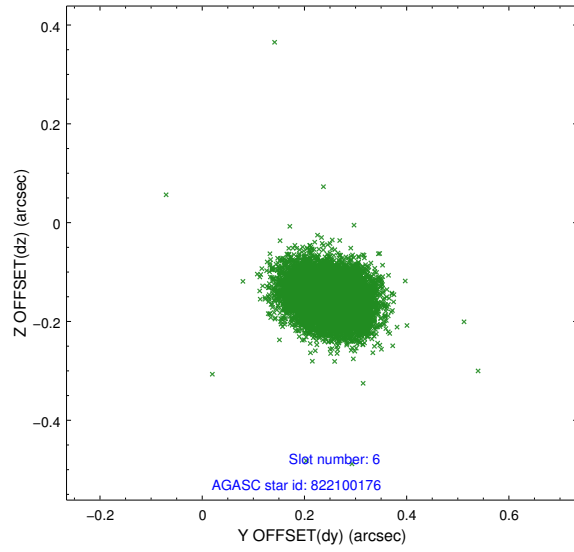
2.4.2 Slot 4



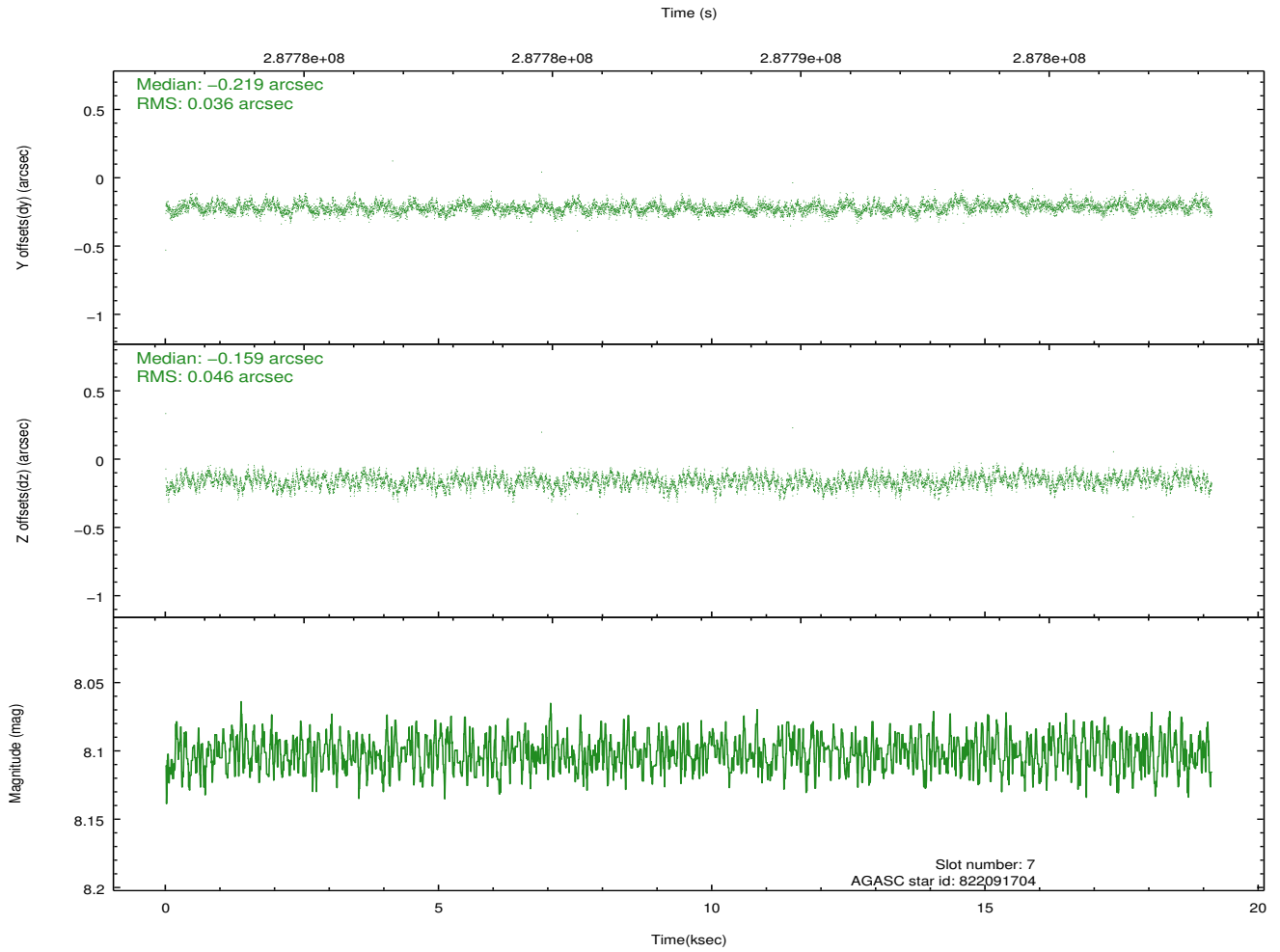
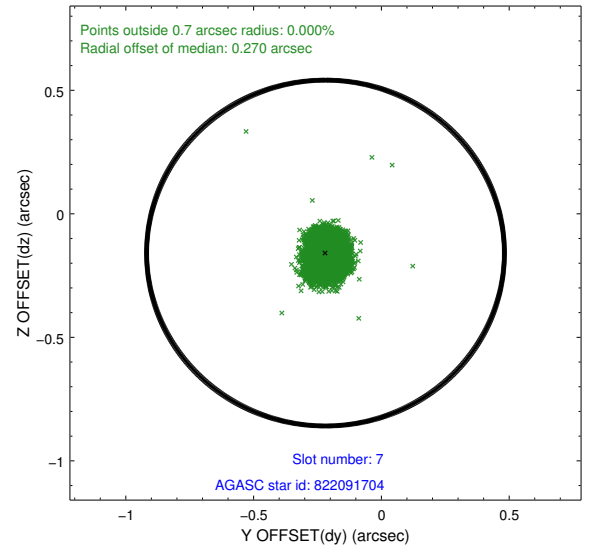
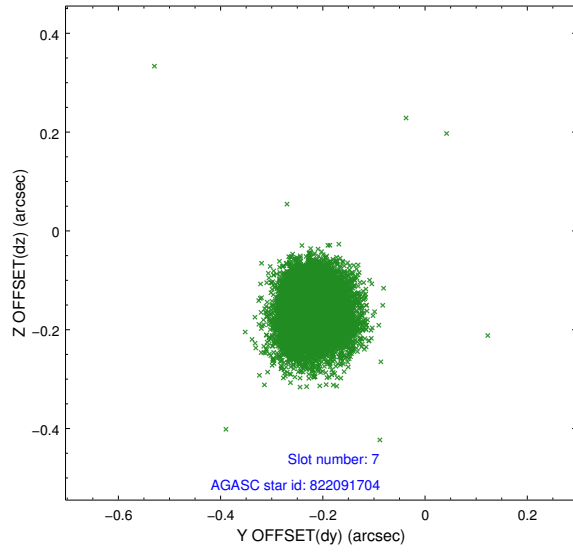
2.4.3 Slot 5



2.4.4 Slot 6

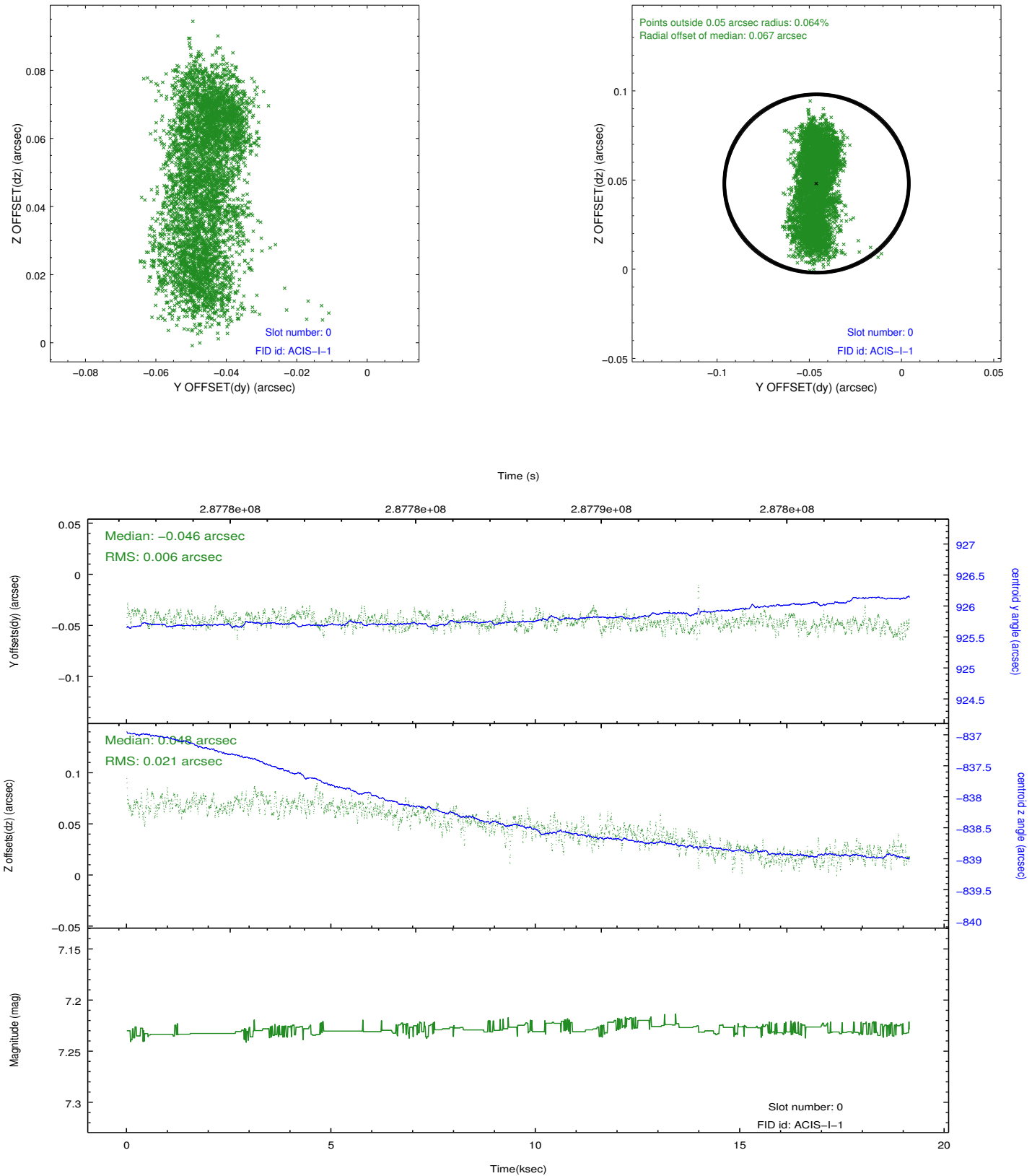


2.4.5 Slot 7

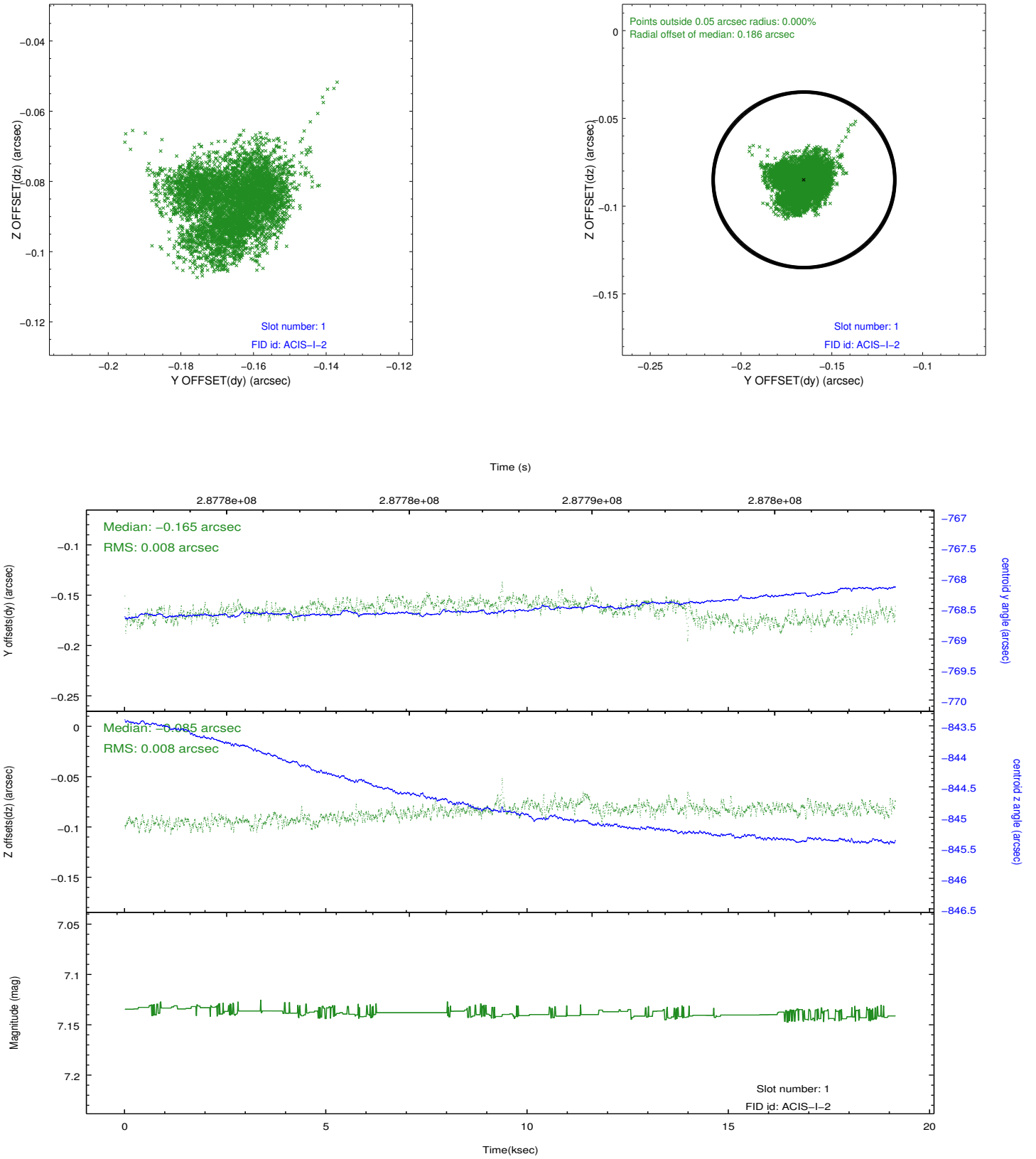


2.5 FID Slots

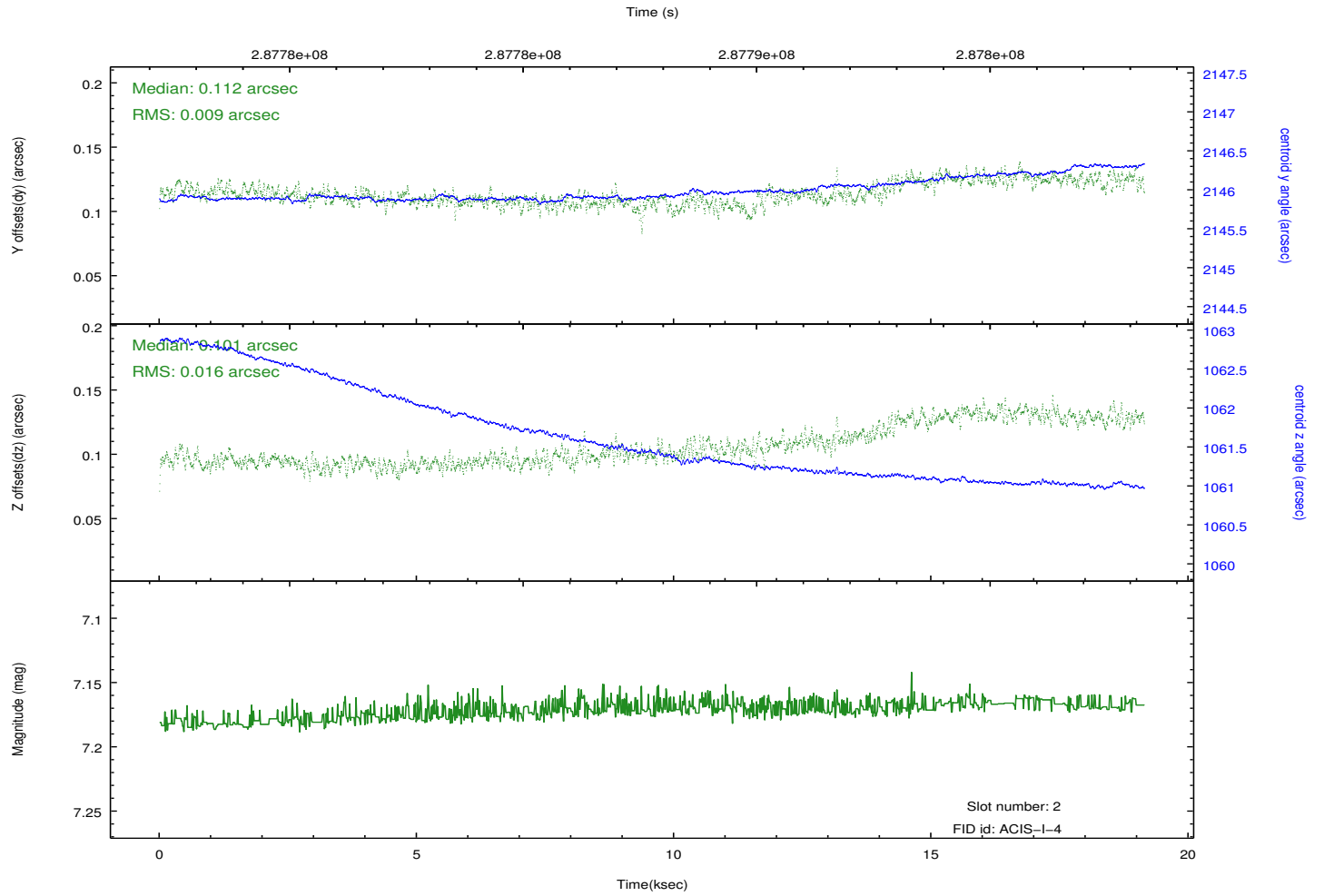
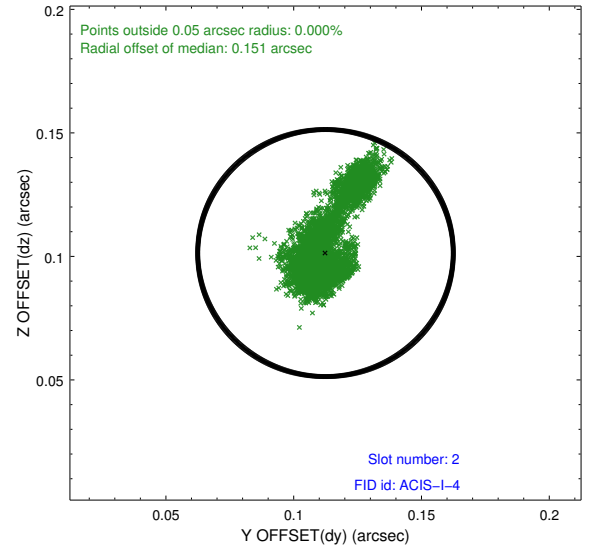
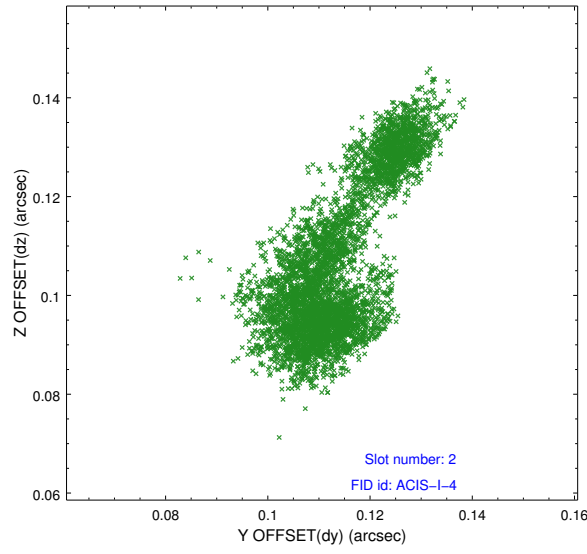
2.5.1 Slot 0



2.5.2 Slot 1



2.5.3 Slot 2



A Summary

A.1 Status

V&V Scientist	Beth Sundheim
V&V Date (YYYY-MM-DD)	2012.04.22
V&V Edition	1
V&V Disposition and Status	OK
V&V Charge Time	19.1391999

A.2 Comments