

# V&V Reference Report

## L2 ASCDS Version : 8.4.4

Observation 6692 - L2 Version 3  
Chandra X-Ray Center

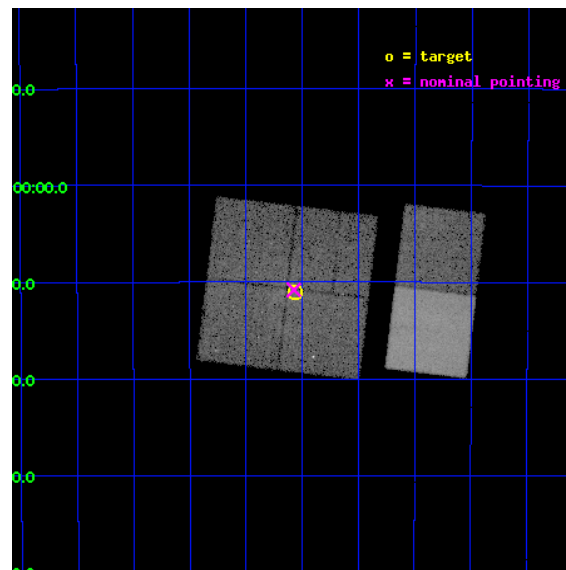
L2 Processing Date : Apr 19 2012

## Contents

<b>1</b>	<b>Front</b>	<b>2</b>
<b>2</b>	<b>OBI</b>	<b>3</b>
2.1	OBI . . . . .	3
2.1.1	Images . . . . .	3
2.1.2	Bias . . . . .	3
2.1.3	Parameters . . . . .	4
2.1.4	Events . . . . .	4
2.2	Compared Parameters . . . . .	5
2.3	Aspect . . . . .	6
2.4	Star Slots . . . . .	9
2.4.1	Slot 3 . . . . .	9
2.4.2	Slot 4 . . . . .	10
2.4.3	Slot 5 . . . . .	11
2.4.4	Slot 6 . . . . .	12
2.4.5	Slot 7 . . . . .	13
2.5	FID Slots . . . . .	14
2.5.1	Slot 0 . . . . .	14
2.5.2	Slot 1 . . . . .	15
2.5.3	Slot 2 . . . . .	16
<b>A</b>	<b>Summary</b>	<b>17</b>
A.1	Status . . . . .	17
A.2	Comments . . . . .	17

# 1 Front

seq_num	500643	Sequence number
obs_id	6692	Observation id
title	Exploring the X-ray Properties of the Twin VHE Gamma-ray SNRs CTB 37 A & B	Proposal title
observer	Dr James Hinton	Principal investigator
object	HESS J1713--381	Source name
dtcycle	0	&#160
cycle	P	events from which exps? Prim/Second/Both
ra_targ	258.517083	Observer's specified target RA [deg]
dec_targ	-38.184806	Observer's specified target Dec [deg]
ra_nom	258.51865601339	Nominal RA [deg]
dec_nom	-38.180266614172	Nominal Dec [deg]
roll_nom	96.814348526752	Nominal Roll [deg]
revision	3	Processing version of data
ontime	25155.158936024	Sum of GTIs [s]
livetime	24836.629166958	Livetime [s]
ontime0	25155.158966005	Sum of GTIs [s]
ontime1	25155.158916116	Sum of GTIs [s]
ontime2	25158.399906337	Sum of GTIs [s]
ontime3	25155.158936024	Sum of GTIs [s]
ontime6	25158.399906337	Sum of GTIs [s]
ontime7	25158.399906337	Sum of GTIs [s]
l2events	159981	Number of level 2 events

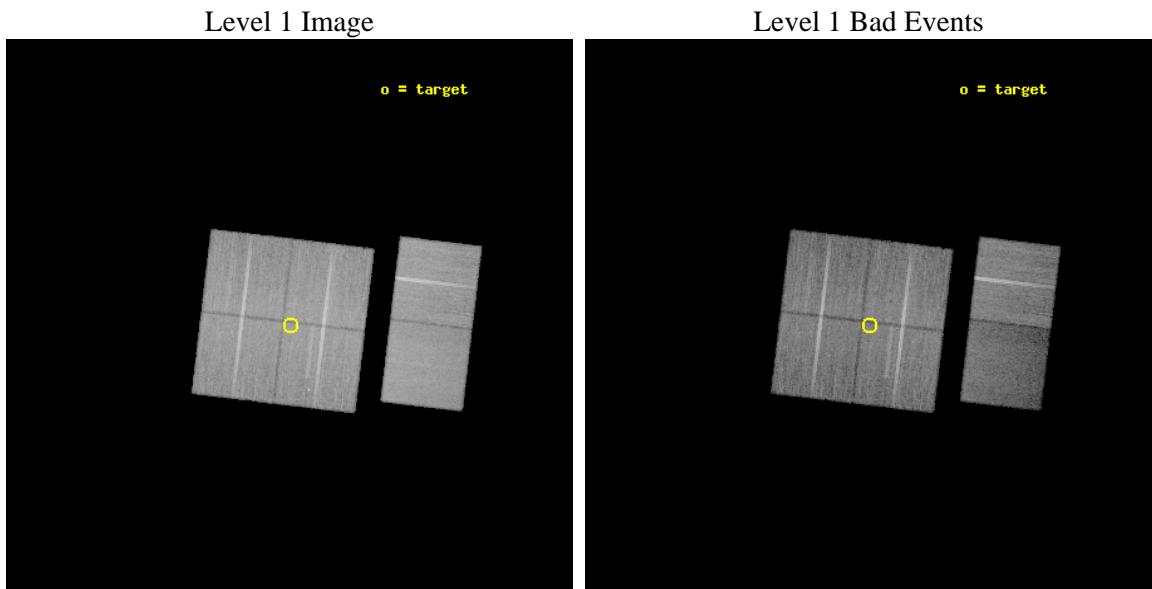




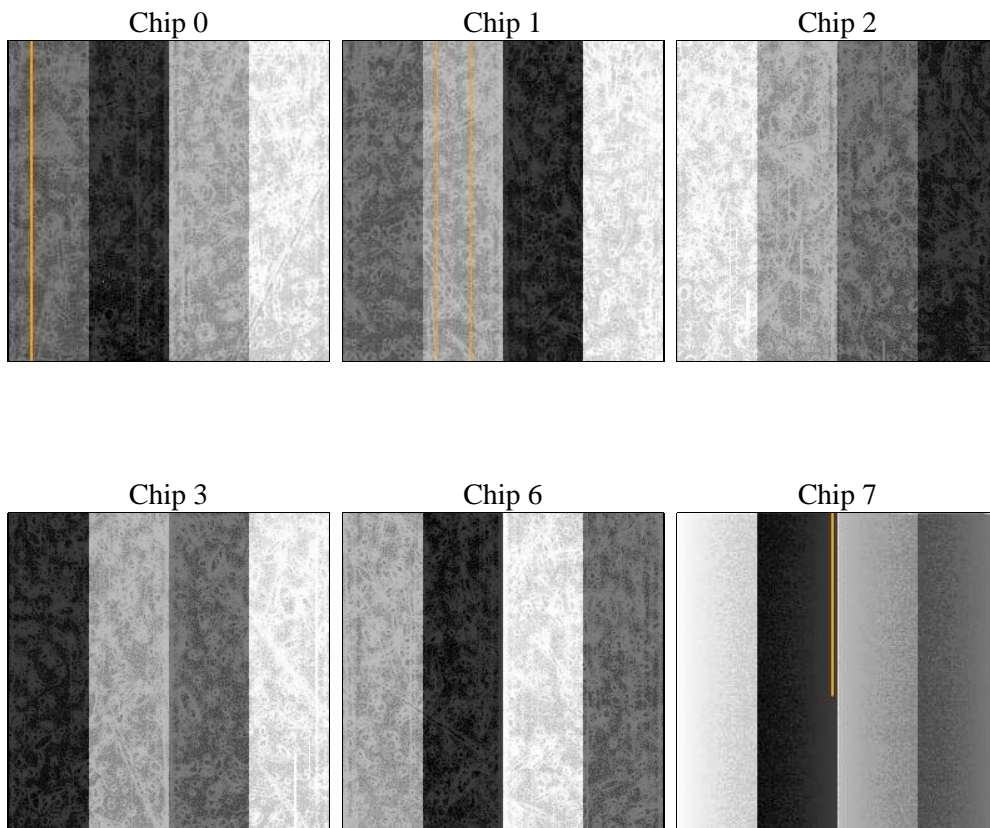
## 2 OBI

### 2.1 OBI

#### 2.1.1 Images



#### 2.1.2 Bias



### 2.1.3 Parameters

obi_num	2	Obi number	sched_exp_time	25000.000000	[s] Scheduled observation exposure time
ascdsver	8.4.4	Processing system revision	ontime	25155.158936024	Sum of GTIs [s]
caldsver	4.4.9	&#160	ontime0	25155.158966005	Sum of GTIs [s]
date	2012-04-19T14:28:49	Date and time of file creation	ontime1	25155.158916116	Sum of GTIs [s]
revision	3	Processing version of data	ontime2	25158.399906337	Sum of GTIs [s]
			ontime3	25155.158936024	Sum of GTIs [s]
			ontime6	25158.399906337	Sum of GTIs [s]
			ontime7	25158.399906337	Sum of GTIs [s]
			l1events	1043458	Number of level 1 events

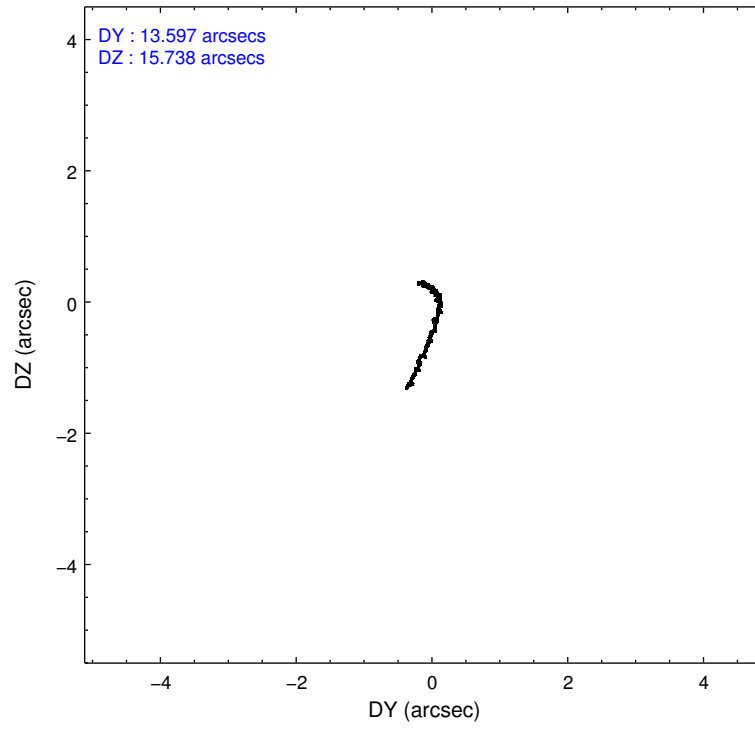
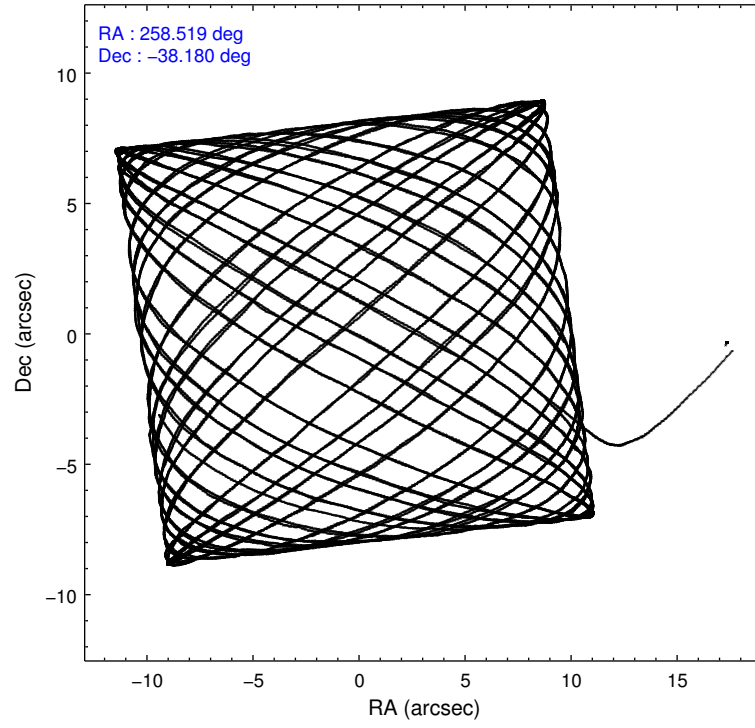
### 2.1.4 Events

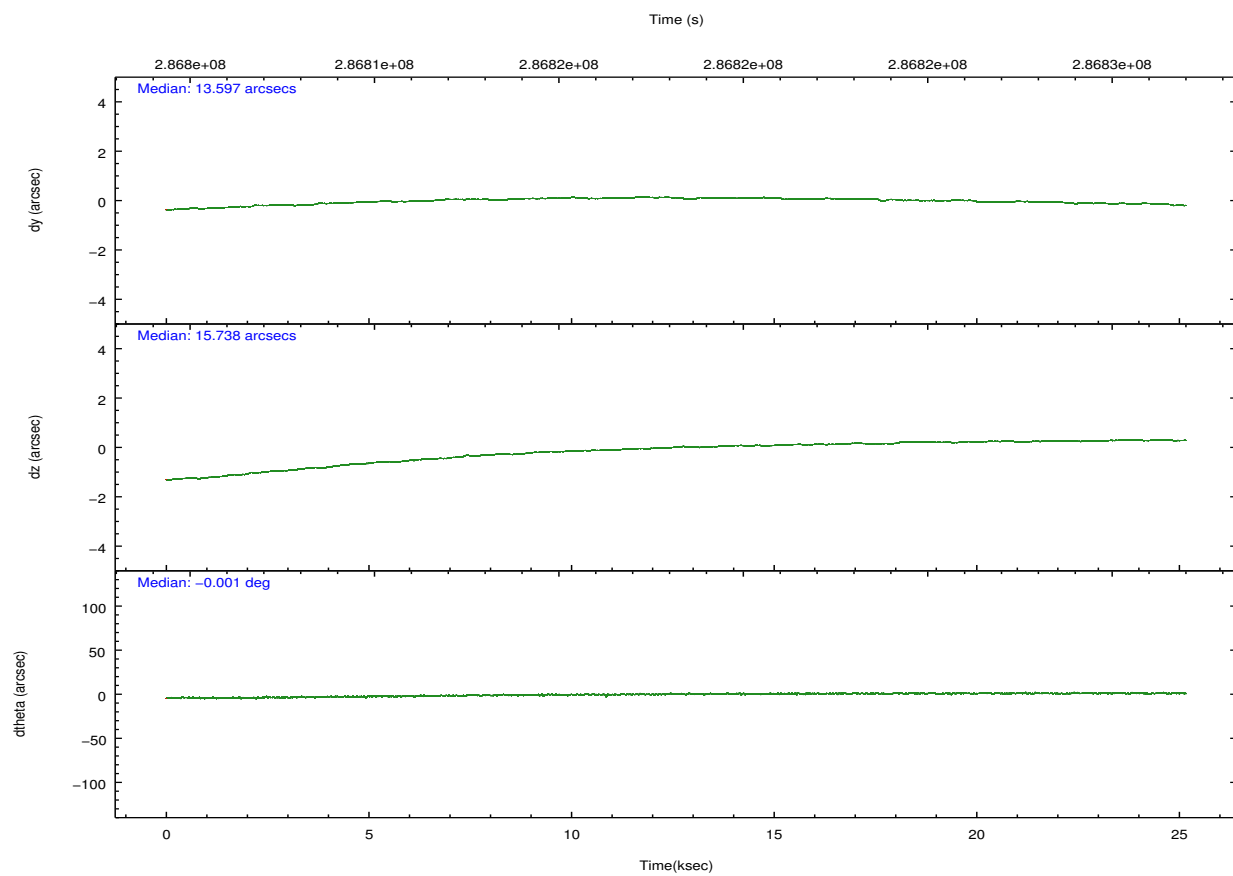
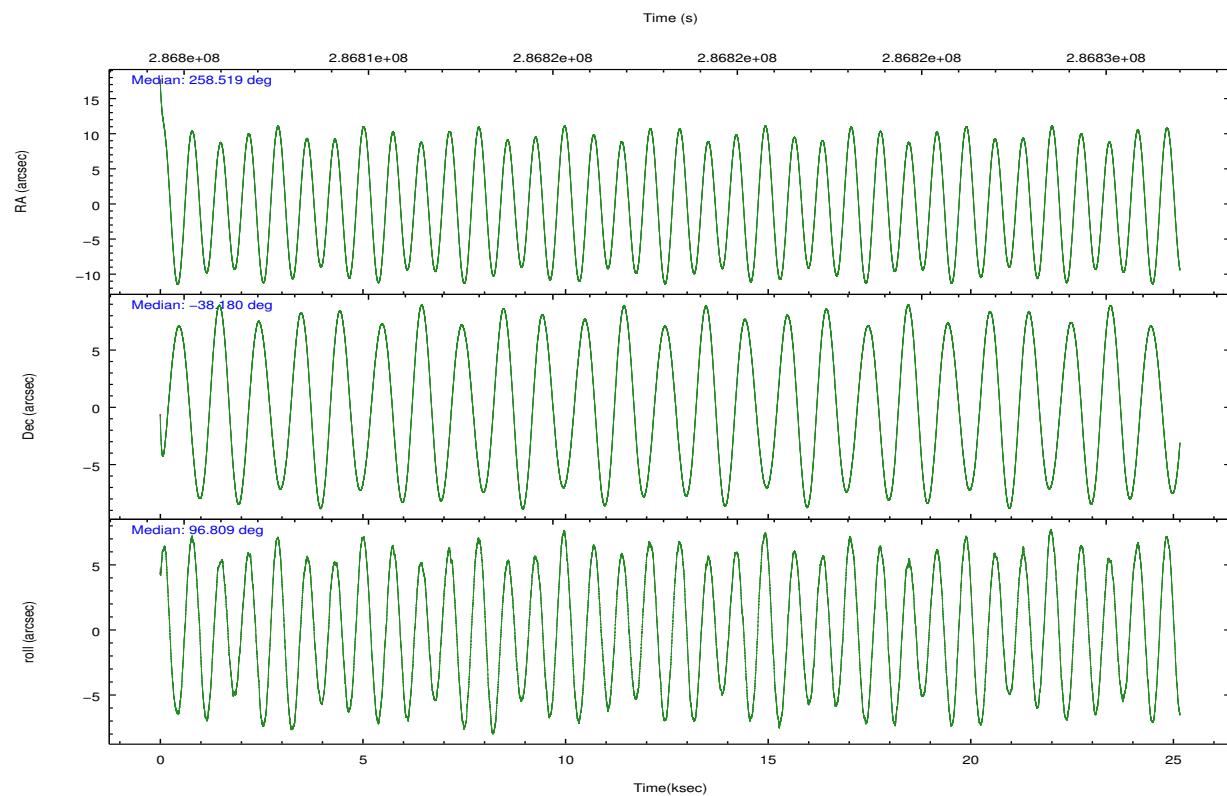
	ccd 0	ccd 1	ccd 2	ccd 3	ccd 6	ccd 7		ccd 0	ccd 1	ccd 2	ccd 3	ccd 6	ccd 7
level 1 events	167355	163815	186199	176098	181536	168455	grade 0 events	7727	8364	8757	8407	7127	8543
rejected events	148376	143626	166383	156979	162687	86820		4%	5%	4%	4%	3%	5%
rejected %	88%	87%	89%	89%	89%	51%	grade 1 events	102	76	160	127	127	252
								0%	0%	0%	0%	0%	0%
							grade 2 events	4476	4274	4431	3914	4279	17335
								2%	2%	2%	2%	2%	10%
							grade 3 events	2008	2157	1909	1969	2061	8001
								1%	1%	1%	1%	1%	4%
							grade 4 events	1948	2141	2066	2023	2031	7859
								1%	1%	1%	1%	1%	4%
							grade 5 events	5126	5763	5128	6074	6071	18295
								3%	3%	2%	3%	3%	10%
							grade 6 events	3167	3597	3009	3163	3657	41144
								1%	2%	1%	1%	2%	24%
							grade 7 events	142801	137443	160739	150421	156183	67026
								85%	83%	86%	85%	86%	39%

## 2.2 Compared Parameters

Parameter	Planned	Actual	Parameter	Planned	Actual
Instrument	ACIS	ACIS	Obspar format version number	7	7
Detector	ACIS-012367	ACIS-012367	Obspar file type	PREDICTED	ACTUAL
Grating	NONE	NONE	Obspar update status	NONE	UPDATED
Data mode	VFAINT	VFAINT	Number of optional ACIS chips dropped	0	0
Observation mode	POINTING	POINTING	On-chip summing requested	N	N
[deg] Pointing RA	258.539715	258.5186560133932	Subarray requested	NONE	NONE
[deg] Pointing Dec	-38.202211	-38.18026661417174	Alternating exposures requested	N	N
[deg] Pointing Roll	96.618687	96.81434852675166	[s] Primary exposure time	0.000000	3.2
[mm] SIM focus pos	-0.782348	-0.7809083437167272			
[mm] SIM defocus	0	0.001439871863259334			
[mm] SIM translation stage pos	-233.592463	-233.5874344608287			
[mm] SIM translation stage offset	0	-0.005018542100998502			
[s] Observation start time (MET)	286805761.184000	286804508.73816			
Observation start date	2007-02-02T12:14:56	2007-02-02T11:55:08			
[s] Observation end time (MET)	286830761.184000	286831092.62692			
Observation end date	2007-02-02T19:11:36	2007-02-02T19:18:12			
Read mode	TIMED	TIMED			

## 2.3 Aspect



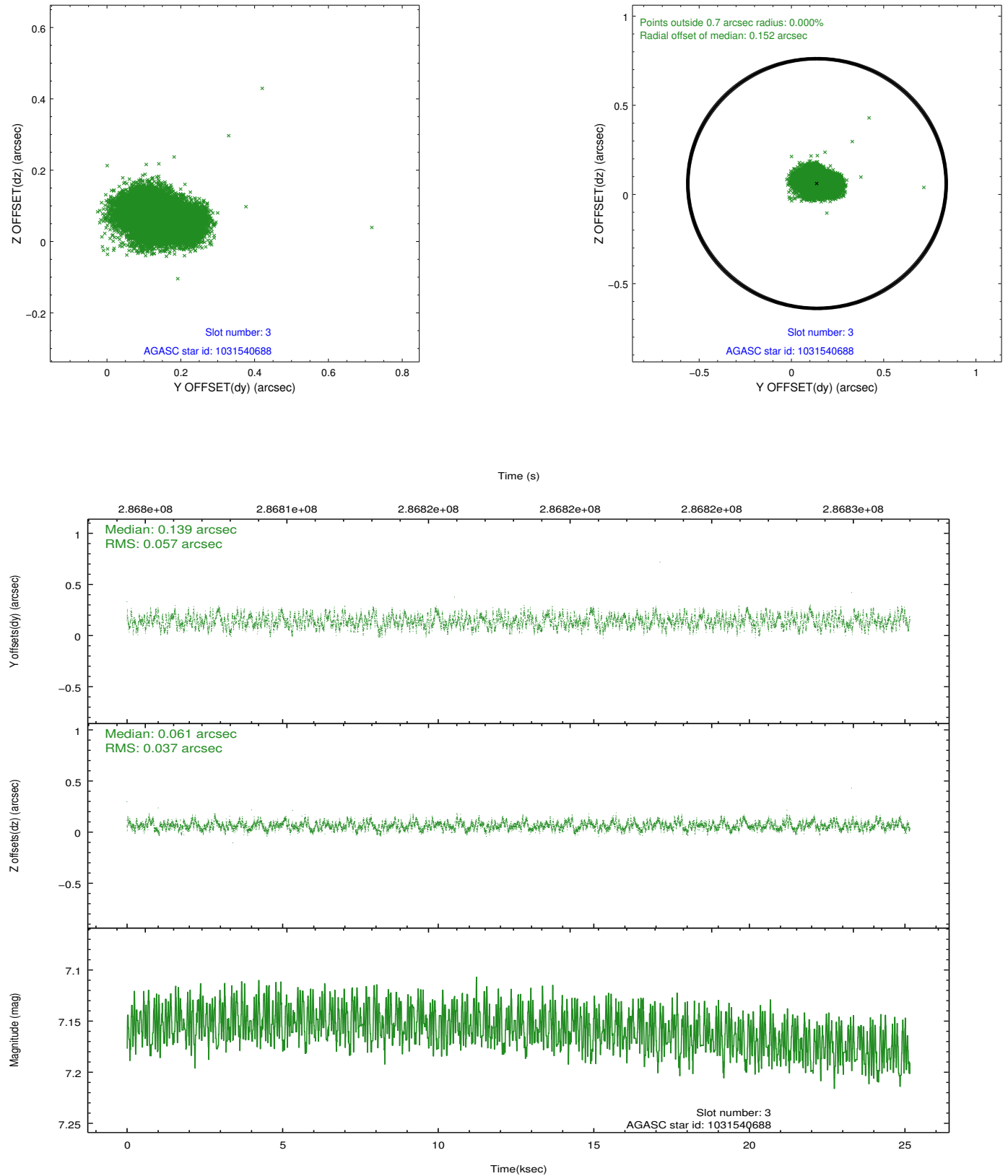


### Slot Statistics

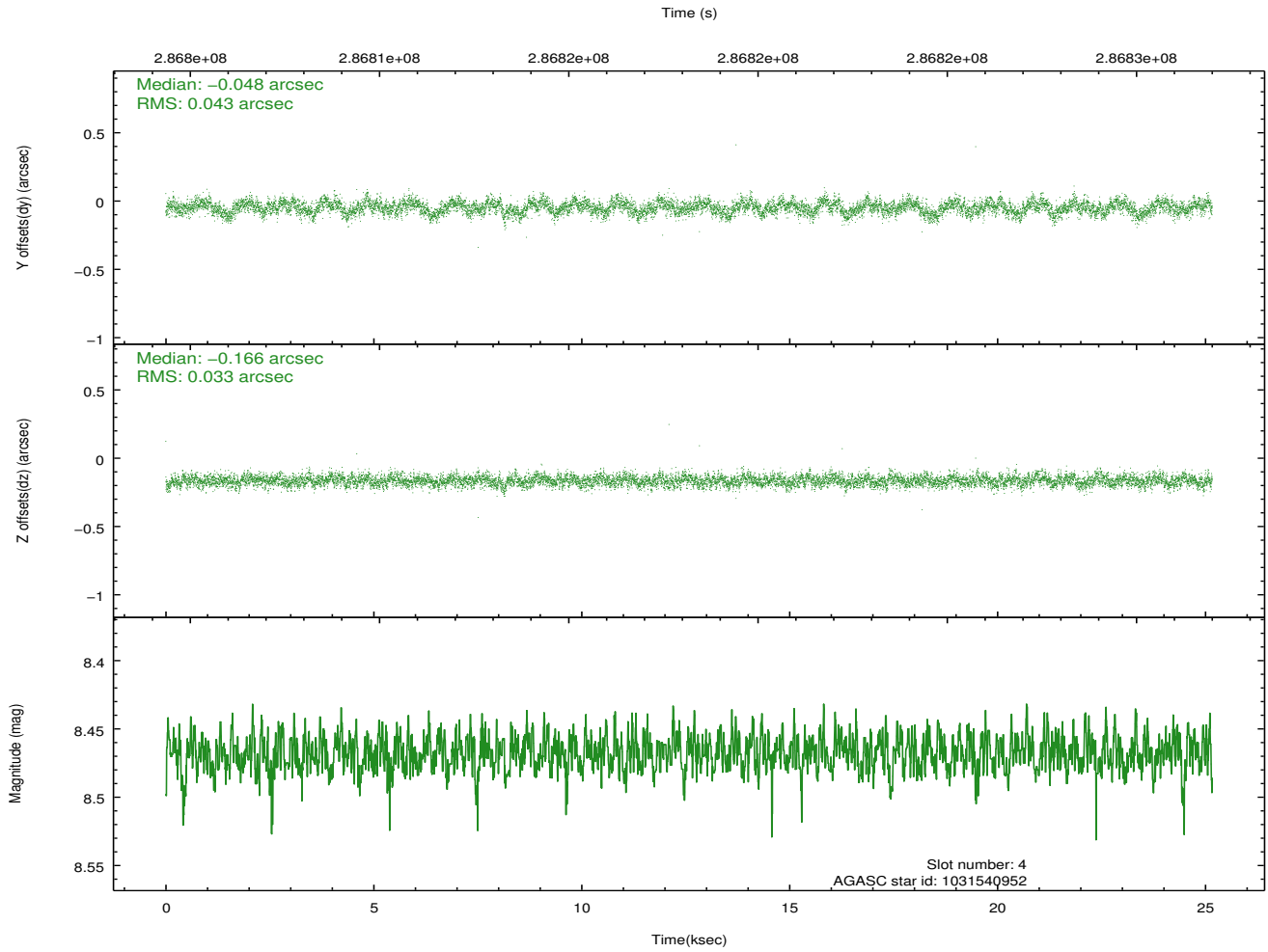
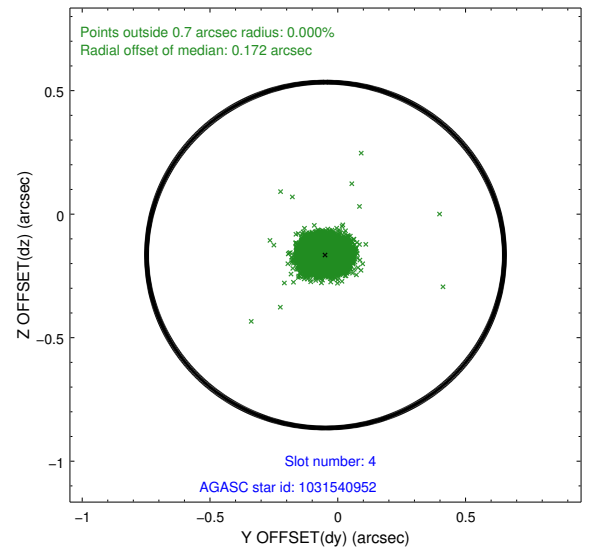
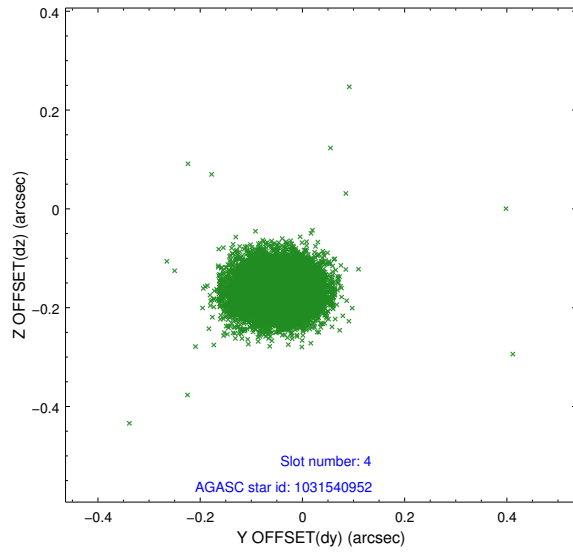
slot	status	id	mag	n_pts	med_dy	med_dz	dr1	dr2	ra	dec	mean_y	mean_z
0	FID	ACIS-I-1	7.23	6138	0.065	-0.060	0.015	0.056	0.000000	0.000000	925.98	-839.23
1	FID	ACIS-I-5	7.22	6135	-0.228	0.056	0.011	0.020	0.000000	0.000000	-1822.33	1058.34
2	FID	ACIS-I-6	7.24	6138	0.074	0.072	0.014	0.035	0.000000	0.000000	391.44	1702.97
3	GUIDE	1031540688	7.16	12277	0.139	0.061	0.074	0.115	258.843021	-38.212972	-138.36	-847.48
4	GUIDE	1031540952	8.47	12270	-0.048	-0.166	0.056	0.092	258.248329	-37.810269	1495.89	660.71
5	GUIDE	1031546760	8.27	12272	-0.001	-0.107	0.046	0.075	258.059719	-38.284628	-141.69	1381.91
6	GUIDE	1031538744	7.09	12209	-0.225	-0.173	0.046	0.072	257.905000	-37.853256	1449.42	1648.30
7	GUIDE	1031541992	8.55	12271	0.131	0.379	0.056	0.090	259.348449	-38.357588	-828.08	-2201.67

## 2.4 Star Slots

### 2.4.1 Slot 3

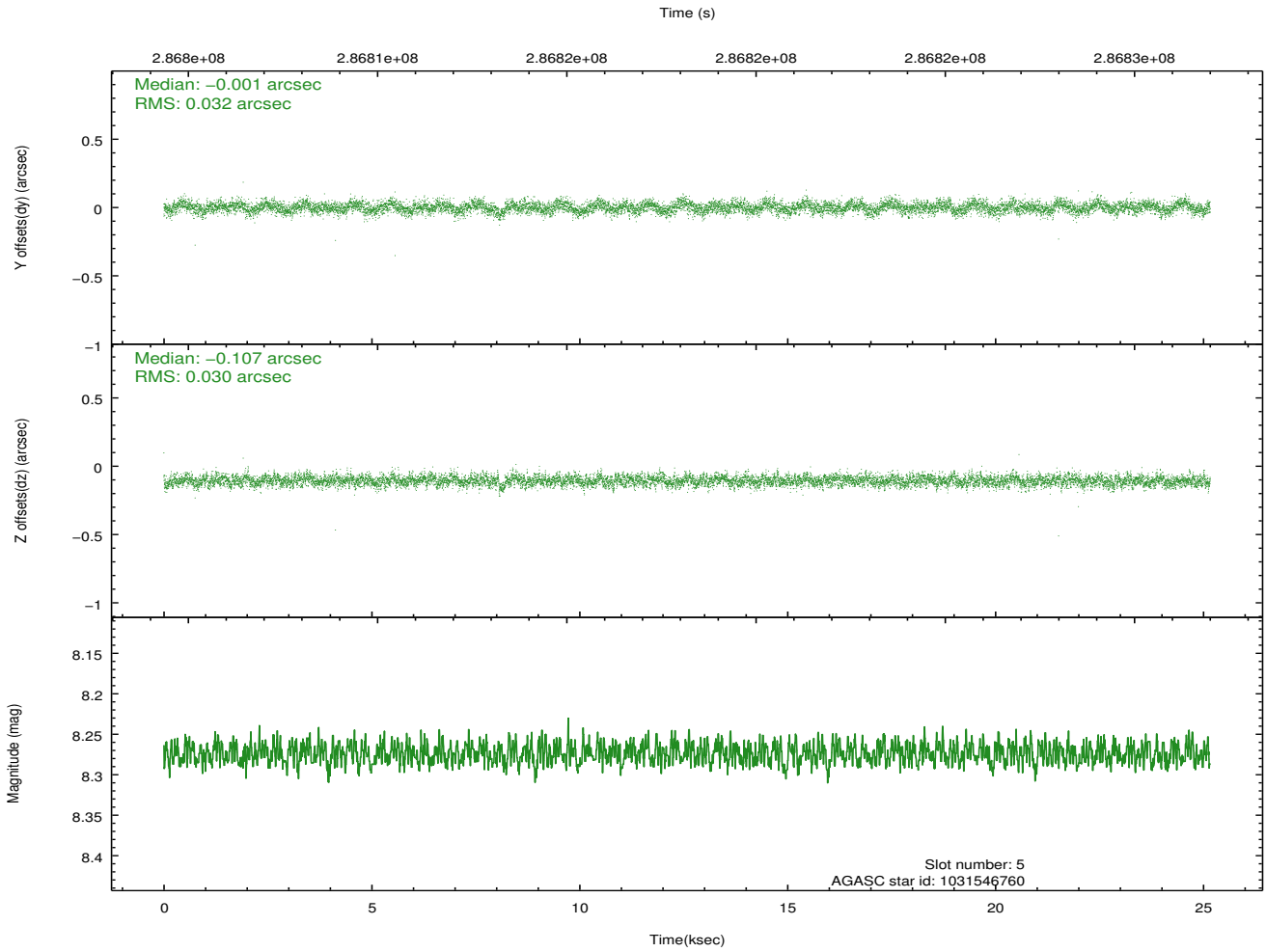
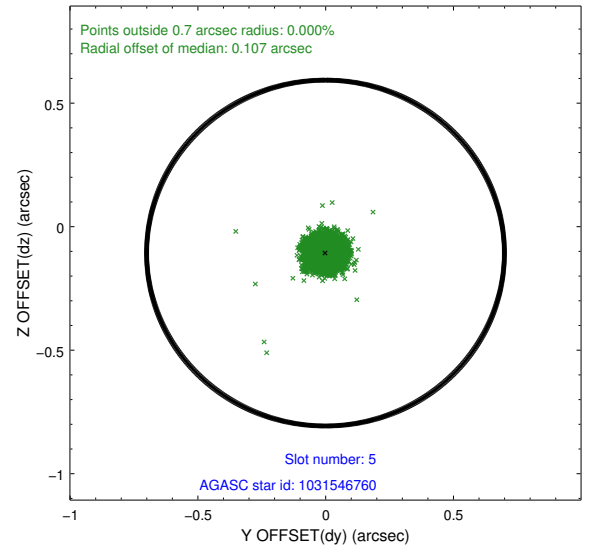
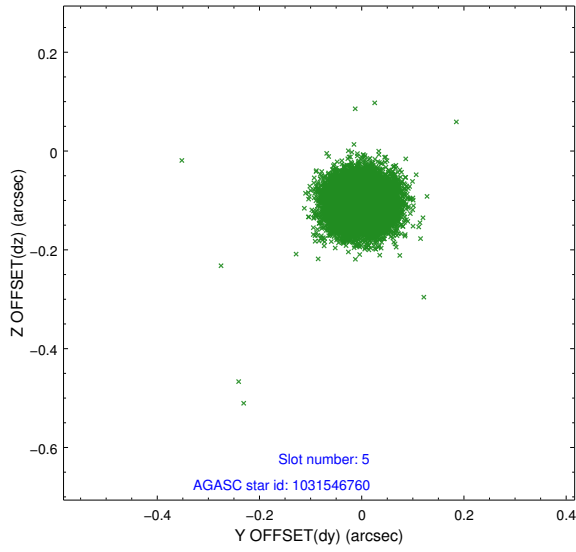


## 2.4.2 Slot 4

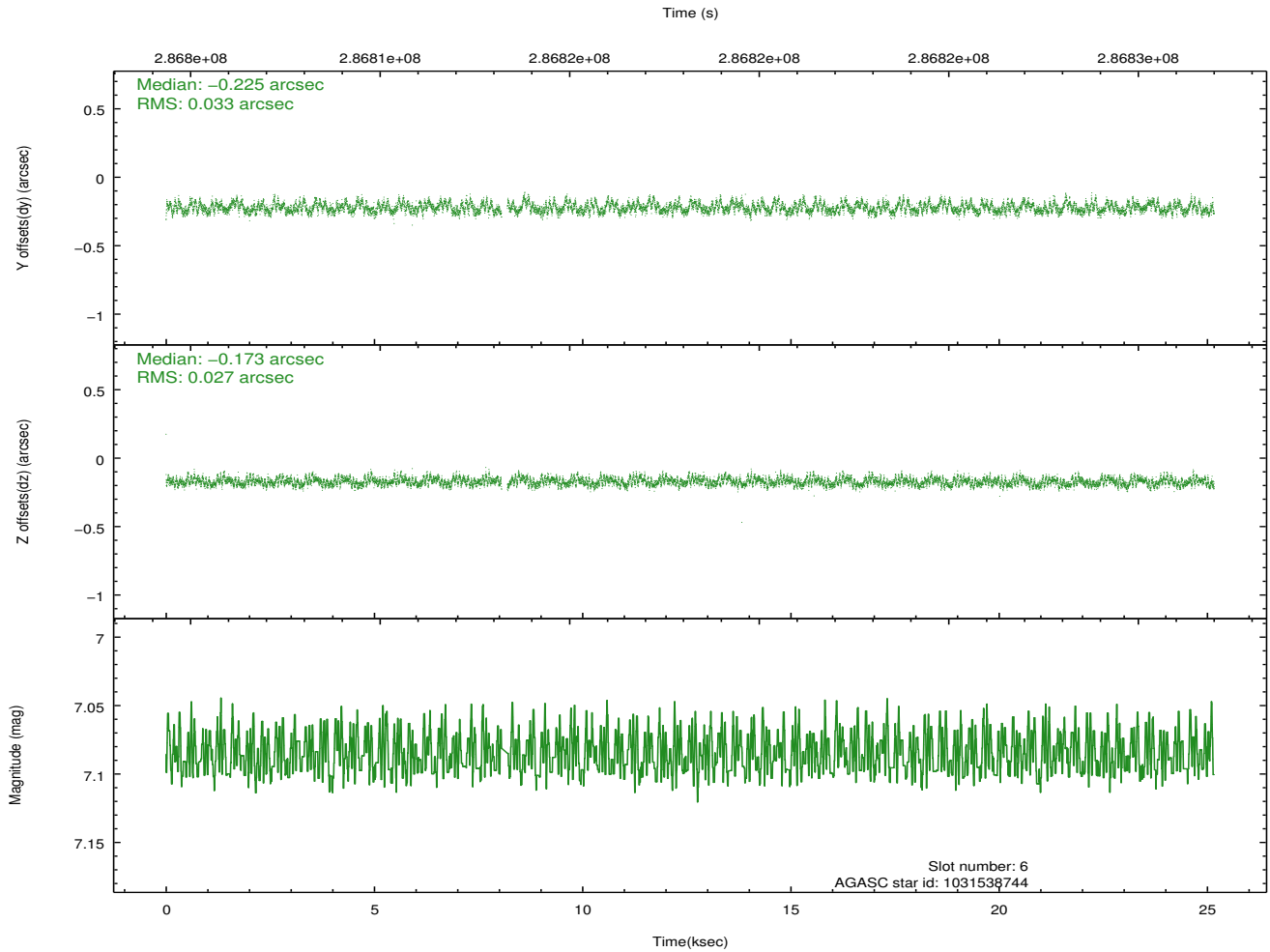
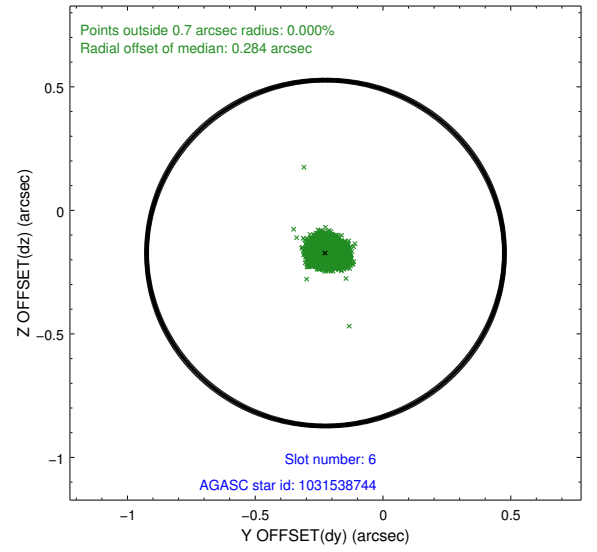
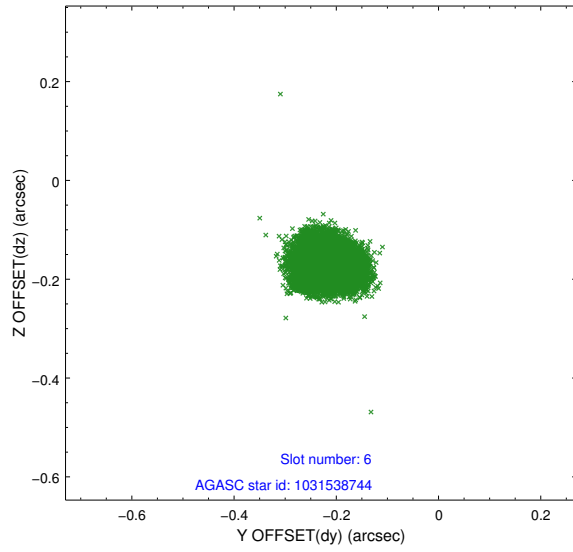




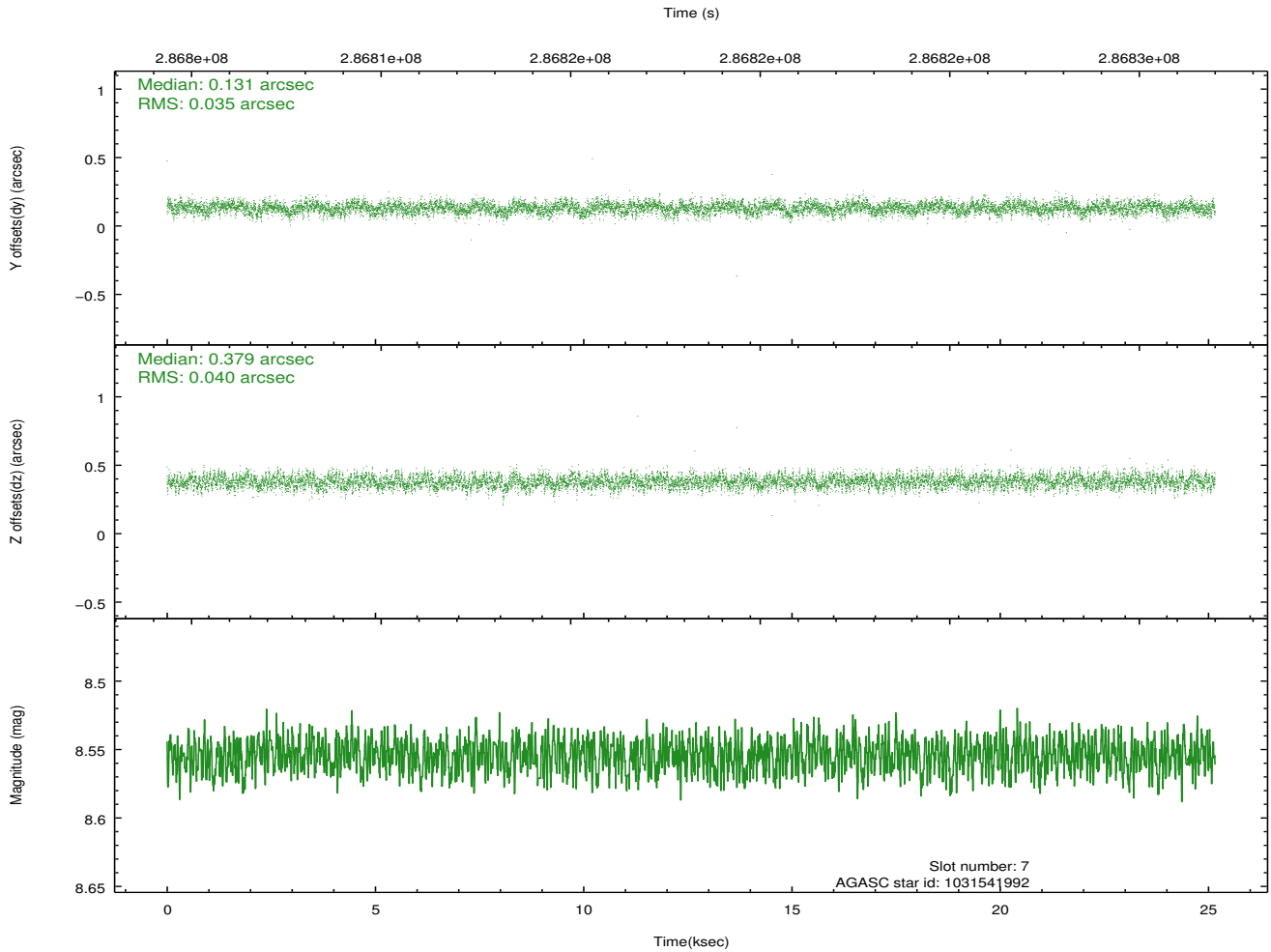
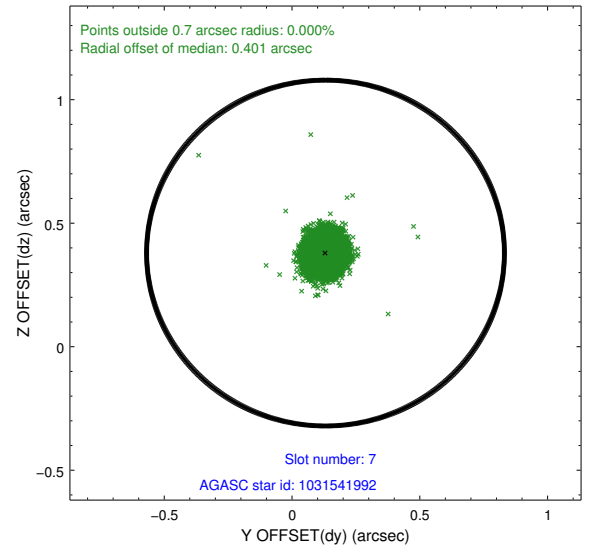
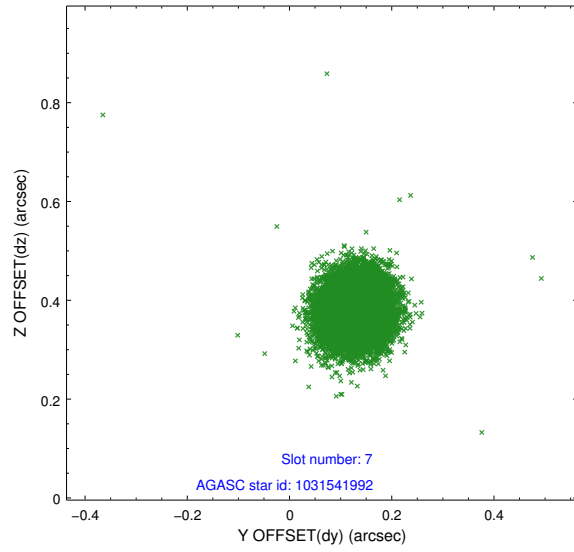
### 2.4.3 Slot 5



## 2.4.4 Slot 6

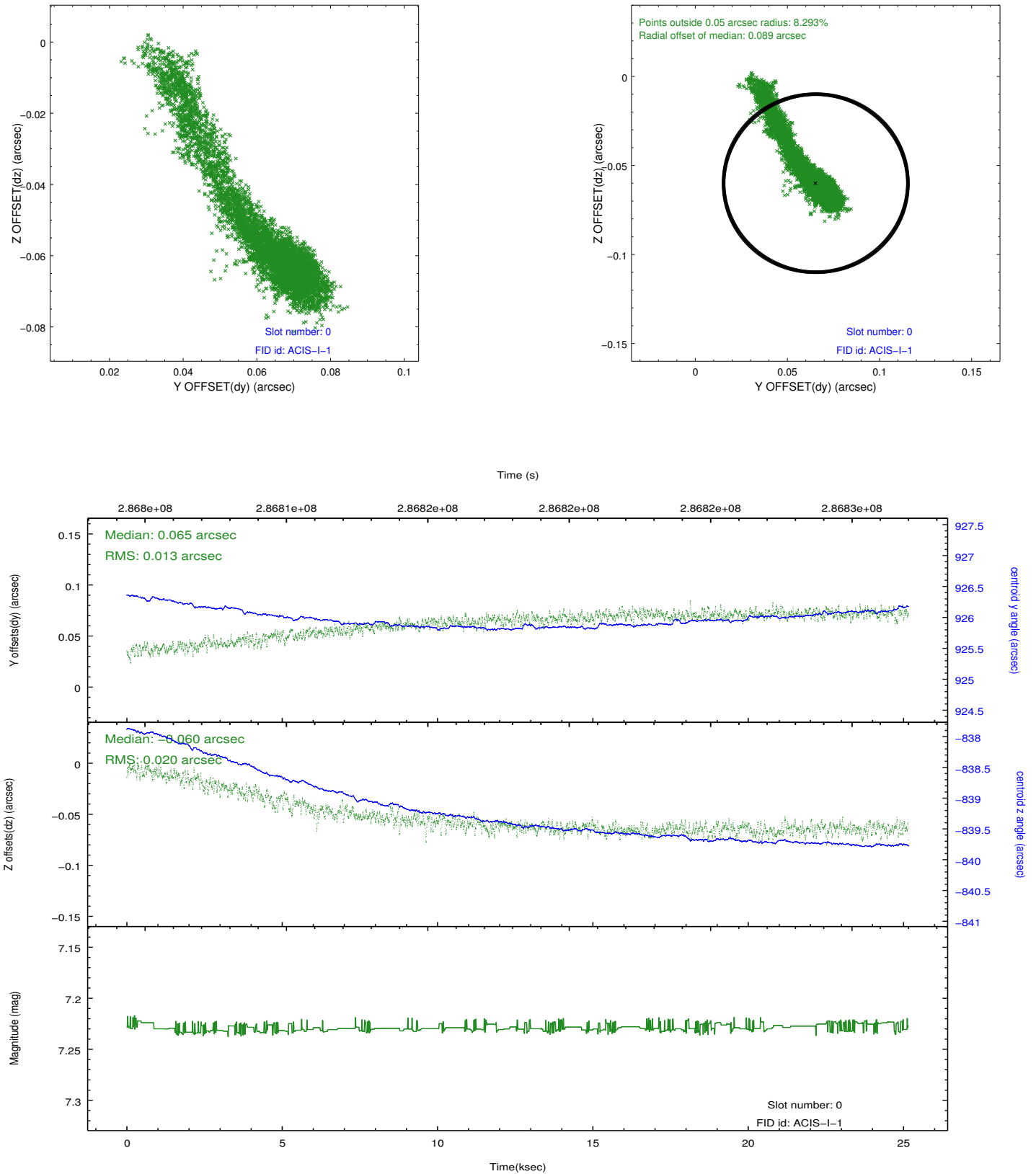


## 2.4.5 Slot 7

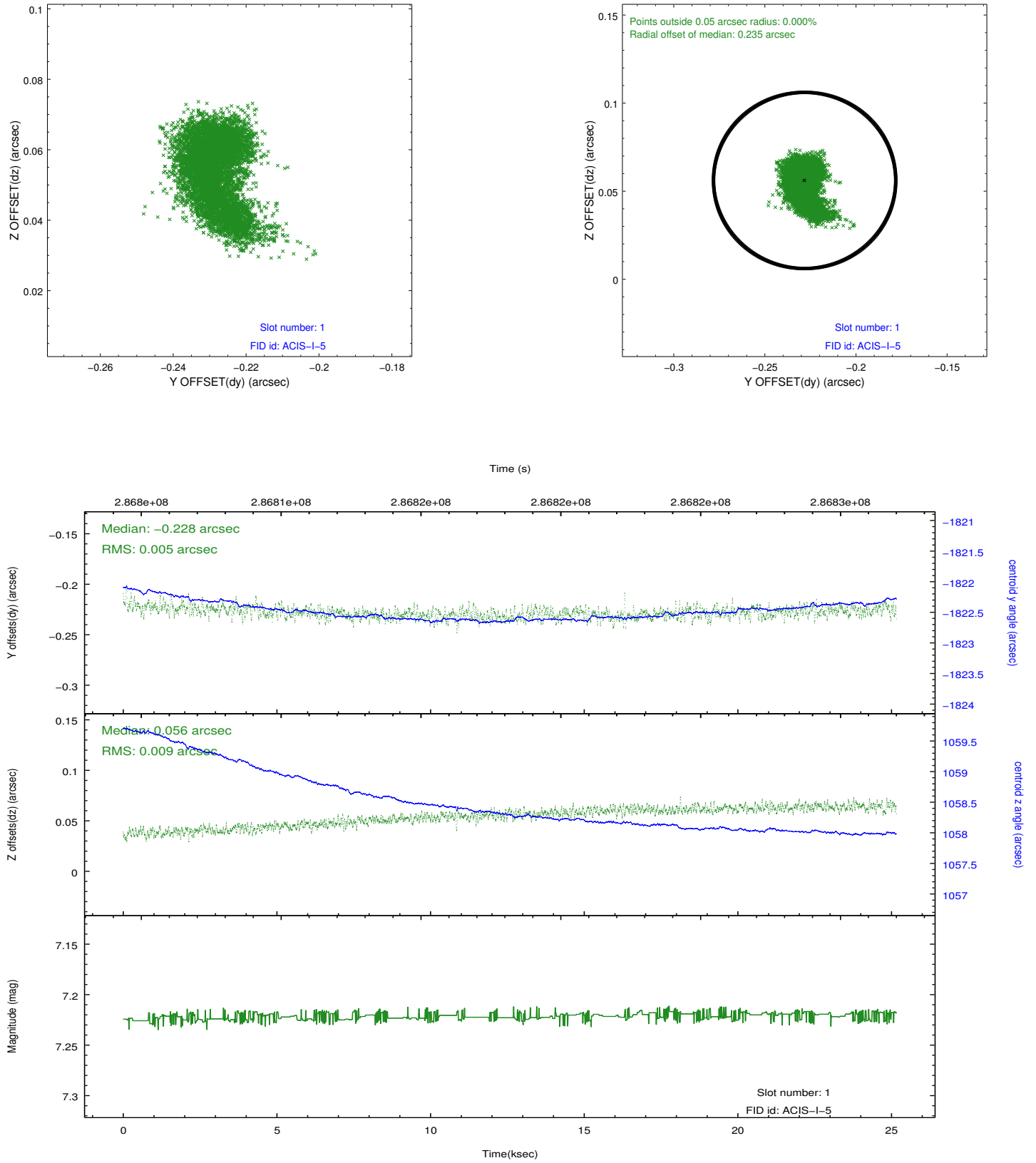


## 2.5 FID Slots

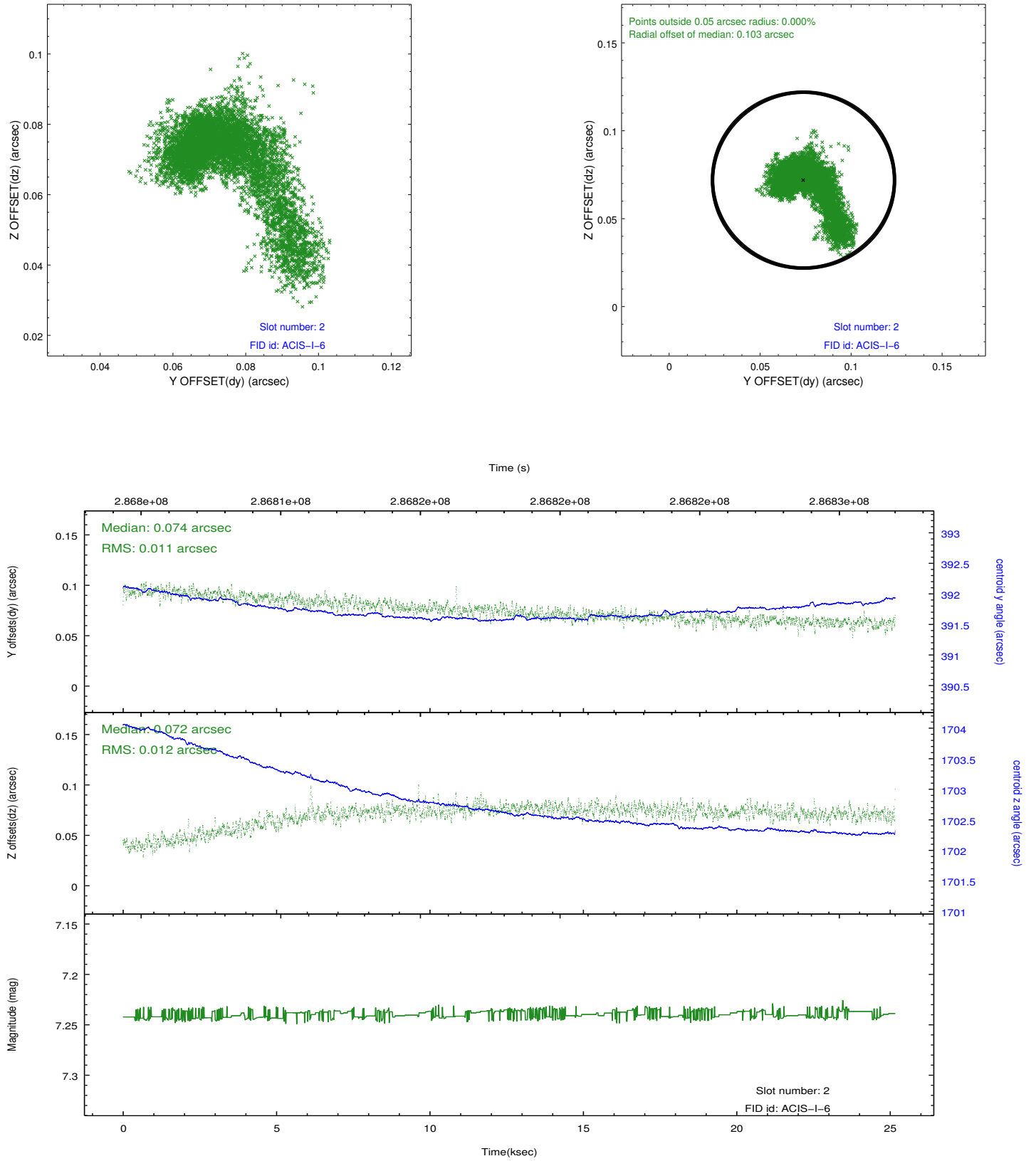
### 2.5.1 Slot 0



## 2.5.2 Slot 1



### 2.5.3 Slot 2



## A Summary

### A.1 Status

V&V Scientist	Beth Sundheim
V&V Date (YYYY-MM-DD)	2012.04.20
V&V Edition	1
V&V Disposition and Status	OK
V&V Charge Time	25.1551589

### A.2 Comments