

V&V Reference Report

L2 ASCDS Version : 8.4.3.1

Observation 7335 - L2 Version 2
Chandra X-Ray Center

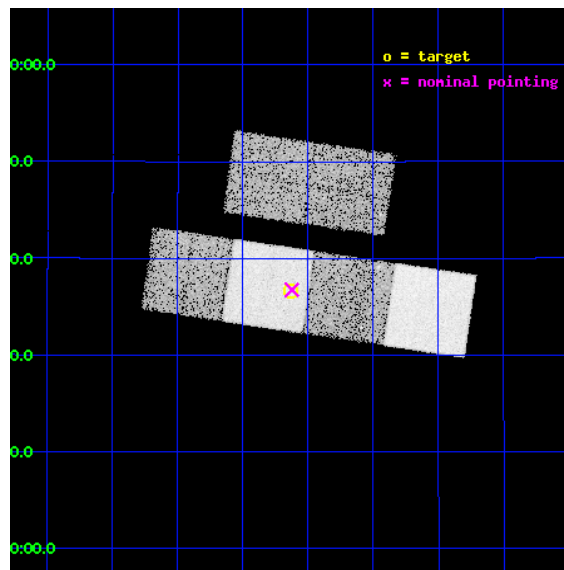
L2 Processing Date : Apr 5 2012

Contents

1	Front	2
2	OBI	3
2.1	OBI	3
2.1.1	Images	3
2.1.2	Bias	3
2.1.3	Parameters	4
2.1.4	Events	4
2.2	Compared Parameters	5
2.3	Aspect	6
2.4	Star Slots	9
2.4.1	Slot 3	9
2.4.2	Slot 4	10
2.4.3	Slot 5	11
2.4.4	Slot 6	12
2.5	FID Slots	13
2.5.1	Slot 0	13
2.5.2	Slot 1	14
2.5.3	Slot 2	15
A	Summary	16
A.1	Status	16
A.2	Comments	16

1 Front

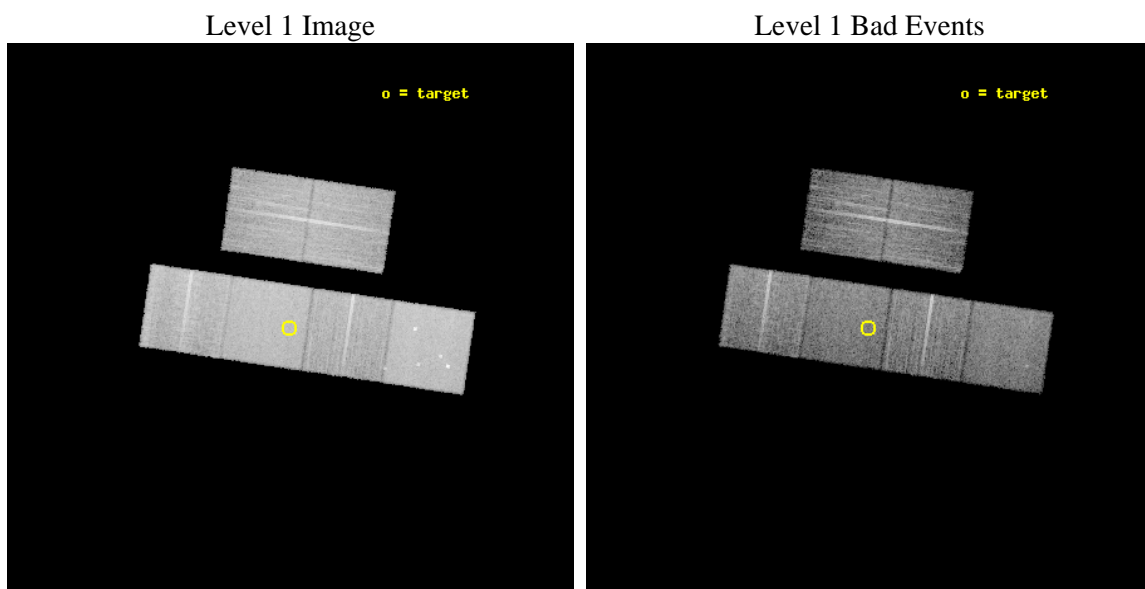
seq_num	400561	Sequence number
obs_id	7335	Observation id
title	Is PSR B1931+24 the golden source for the accretion regimes testing?	
observer	Dr. Nanda Rea	Principal investigator
object	PSR B1931+24	Source name
dtcycle	0	
cycle	P	events from which exps? Prim/Second/Both
ra_targ	293.4075	Observer's specified target RA [deg]
dec_targ	24.611111	Observer's specified target Dec [deg]
ra_nom	293.405804047	Nominal RA [deg]
dec_nom	24.612578021556	Nominal Dec [deg]
roll_nom	188.39105165783	Nominal Roll [deg]
revision	2	Processing version of data
ontime	9375.9999651313	Sum of GTIs [s]
livetime	9257.2754080234	Livetime [s]
ontime2	9375.9999651313	Sum of GTIs [s]
ontime3	9375.9999651313	Sum of GTIs [s]
ontime5	9375.9999651313	Sum of GTIs [s]
ontime6	9375.9999651313	Sum of GTIs [s]
ontime7	9375.9999651313	Sum of GTIs [s]
ontime8	9372.7589648366	Sum of GTIs [s]
l2events	136261	Number of level 2 events



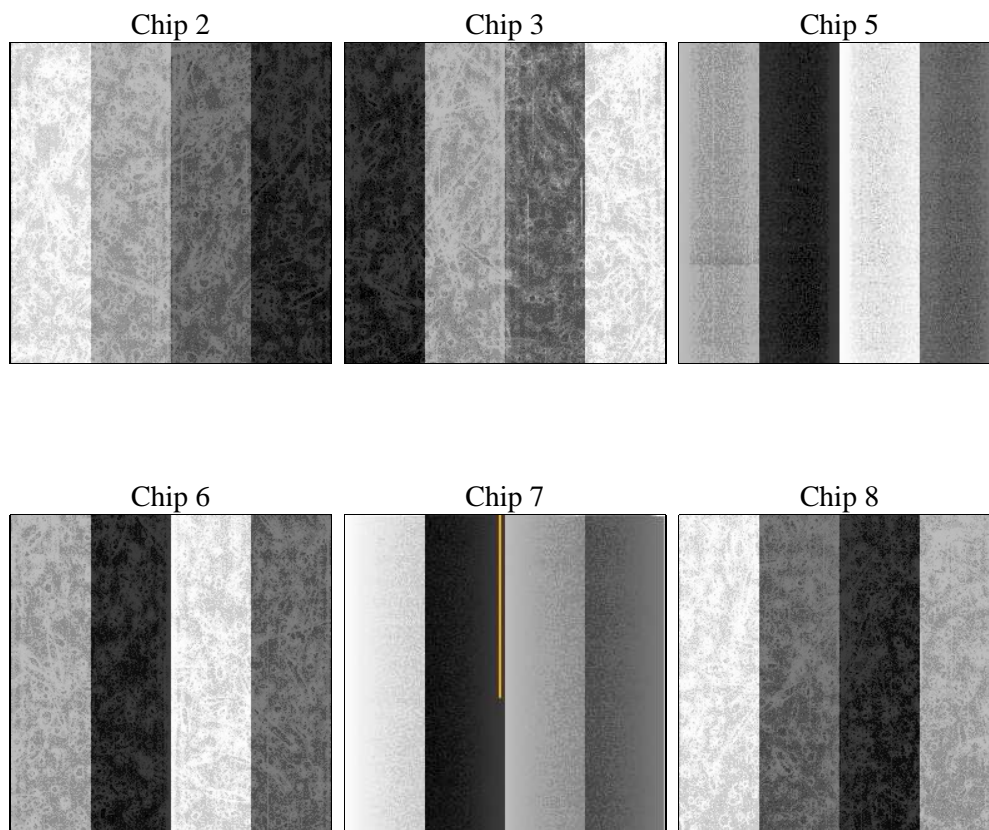
2 OBI

2.1 OBI

2.1.1 Images



2.1.2 Bias



2.1.3 Parameters

obi_num	0	Obi number	sched_exp_time	9351.213000	[s] Scheduled observation exposure time
ascdsver	8.4.3.1	Processing system revision	ontime	9375.9999651313	Sum of GTIs [s]
caldsver	4.4.9	 	ontime2	9375.9999651313	Sum of GTIs [s]
date	2012-04-05T12:19:23	Date and time of file creation	ontime3	9375.9999651313	Sum of GTIs [s]
revision	2	Processing version of data	ontime5	9375.9999651313	Sum of GTIs [s]
			ontime6	9375.9999651313	Sum of GTIs [s]
			ontime7	9375.9999651313	Sum of GTIs [s]
			ontime8	9372.7589648366	Sum of GTIs [s]
			l1events	627601	Number of level 1 events

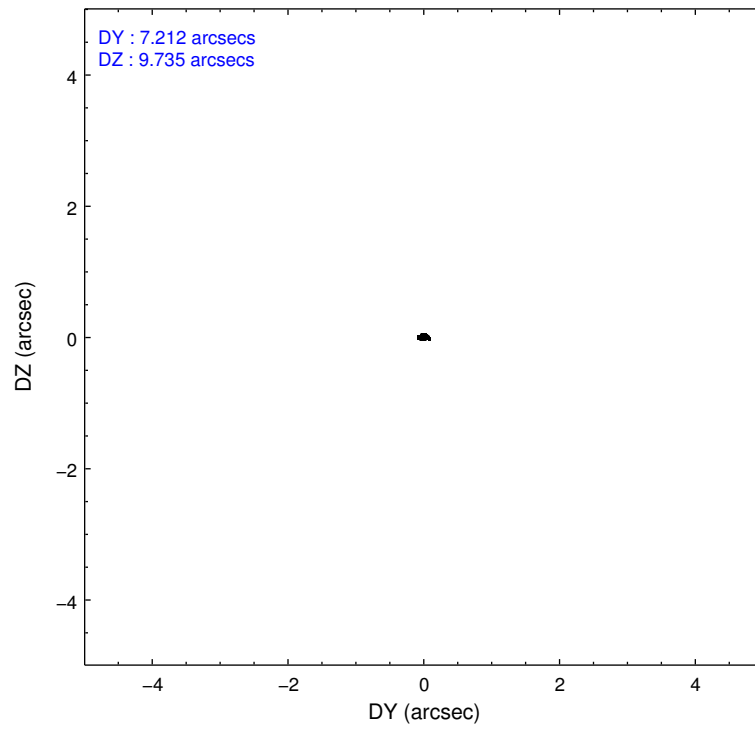
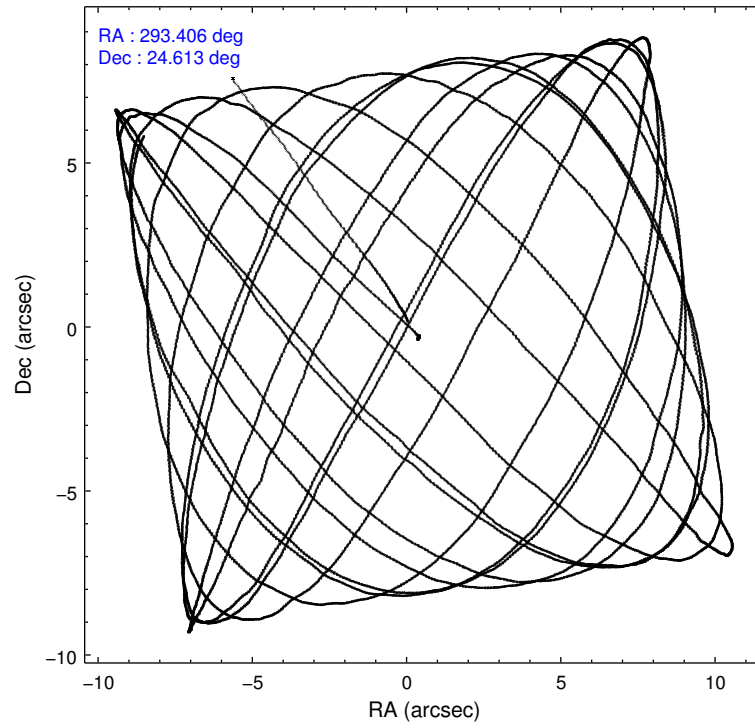
2.1.4 Events

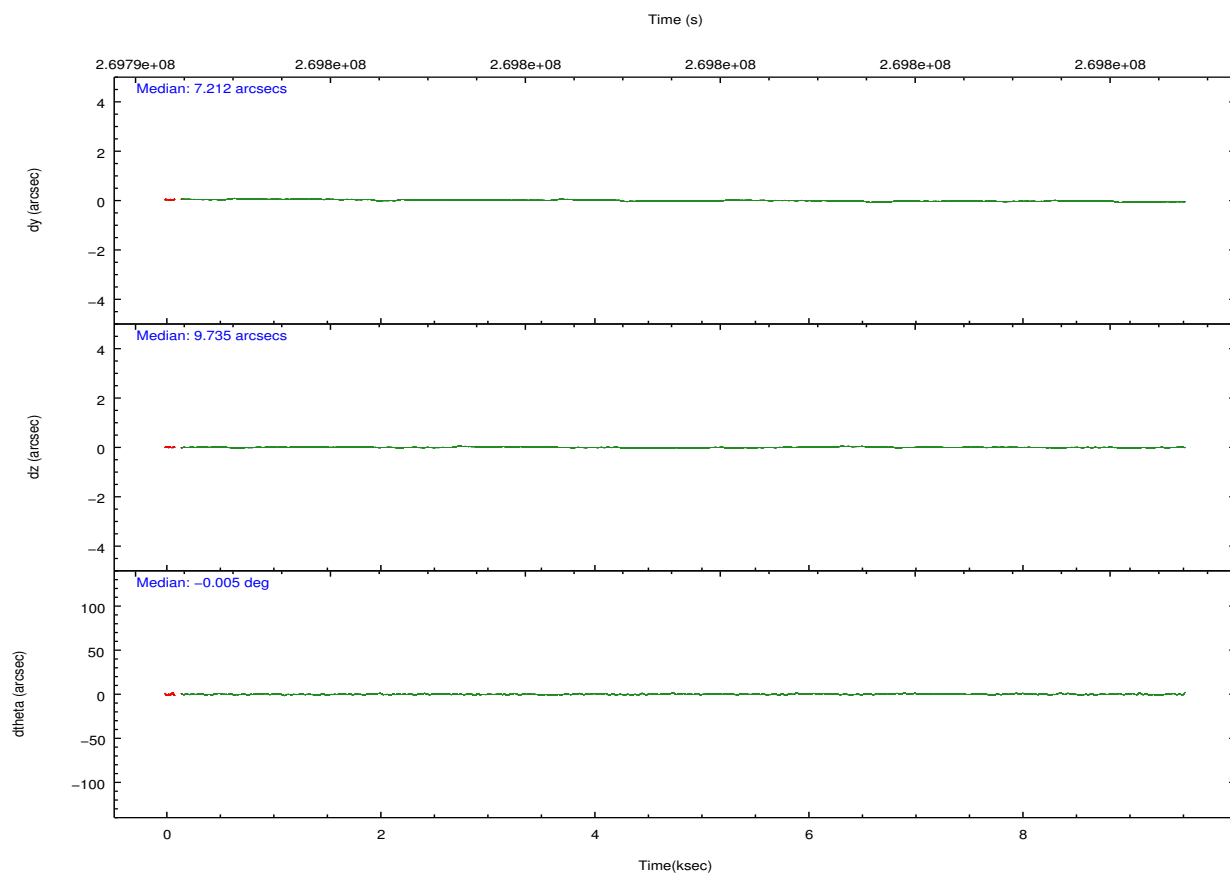
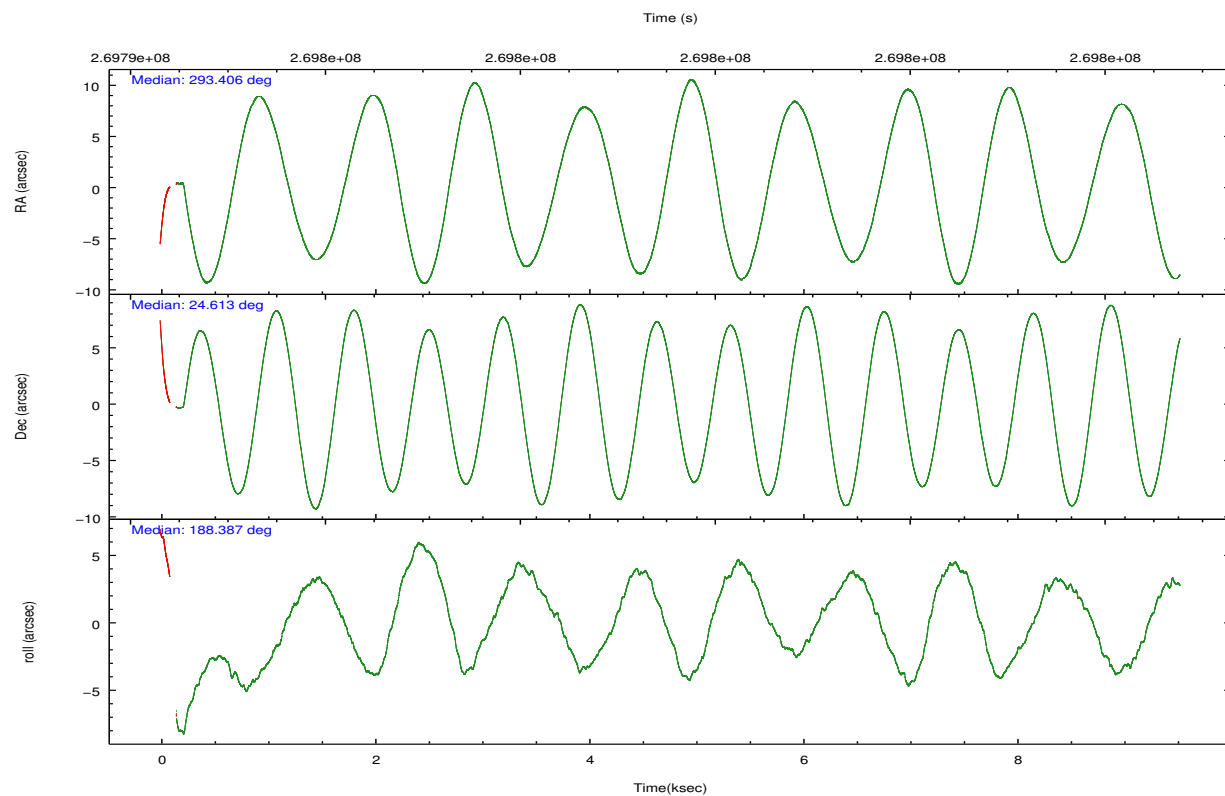
	ccd 2	ccd 3	ccd 5	ccd 6	ccd 7	ccd 8		ccd 2	ccd 3	ccd 5	ccd 6	ccd 7	ccd 8
level 1 events	88996	84835	133046	89285	118875	112564	grade 0 events	4372	4446	6529	4001	4213	7746
rejected events	79281	75050	74056	79230	71519	88660		4%	5%	4%	4%	3%	6%
rejected %	89%	88%	55%	88%	60%	78%	grade 1 events	58	70	290	43	111	75
								0%	0%	0%	0%	0%	0%
							grade 2 events	2100	1980	18320	2299	9979	5514
								2%	2%	13%	2%	8%	4%
							grade 3 events	928	916	2187	1048	4297	2602
								1%	1%	1%	1%	3%	2%
							grade 4 events	961	989	2156	992	4324	2407
								1%	1%	1%	1%	3%	2%
							grade 5 events	3316	3919	9309	4172	11427	5434
								3%	4%	6%	4%	9%	4%
							grade 6 events	1739	1837	32261	2166	26592	6570
								1%	2%	24%	2%	22%	5%
							grade 7 events	75522	70678	61994	74564	57932	82216
								84%	83%	46%	83%	48%	73%

2.2 Compared Parameters

Parameter	Planned	Actual	Parameter	Planned	Actual
Instrument	ACIS	ACIS	Obspar format version number	7	7
Detector	ACIS-235678	ACIS-235678	Obspar file type	PREDICTED	ACTUAL
Grating	NONE	NONE	Obspar update status	NONE	UPDATED
Data mode	FAINT	FAINT	Number of optional ACIS chips dropped	0	0
Observation mode	POINTING	POINTING	On-chip summing requested	N	N
[deg] Pointing RA	293.429105	293.4058040469966	Subarray requested	NONE	NONE
[deg] Pointing Dec	24.629778	24.61257802155585	Alternating exposures requested	N	N
[deg] Pointing Roll	188.224698	188.3910516578271	[s] Primary exposure time	0.000000	3.2
[s] Window start time (MET)	269740865.184000	269740865.184000			
[s] Window stop time (MET)	270172865.184000	270172865.184000			
[mm] SIM focus pos	-0.684267	-0.6828225247311905			
[mm] SIM defocus	0	0.001444936568705701			
[mm] SIM translation stage pos	-190.132523	-190.1400660498719			
[mm] SIM translation stage offset	0	0.00754346686406393			
[s] Observation start time (MET)	269794948.184000	269793608.44841			
Observation start date	2006-07-20T15:01:23	2006-07-20T14:40:08			
[s] Observation end time (MET)	269804299.184000	269804510.34892			
Observation end date	2006-07-20T17:37:14	2006-07-20T17:41:50			
Read mode	TIMED	TIMED			

2.3 Aspect



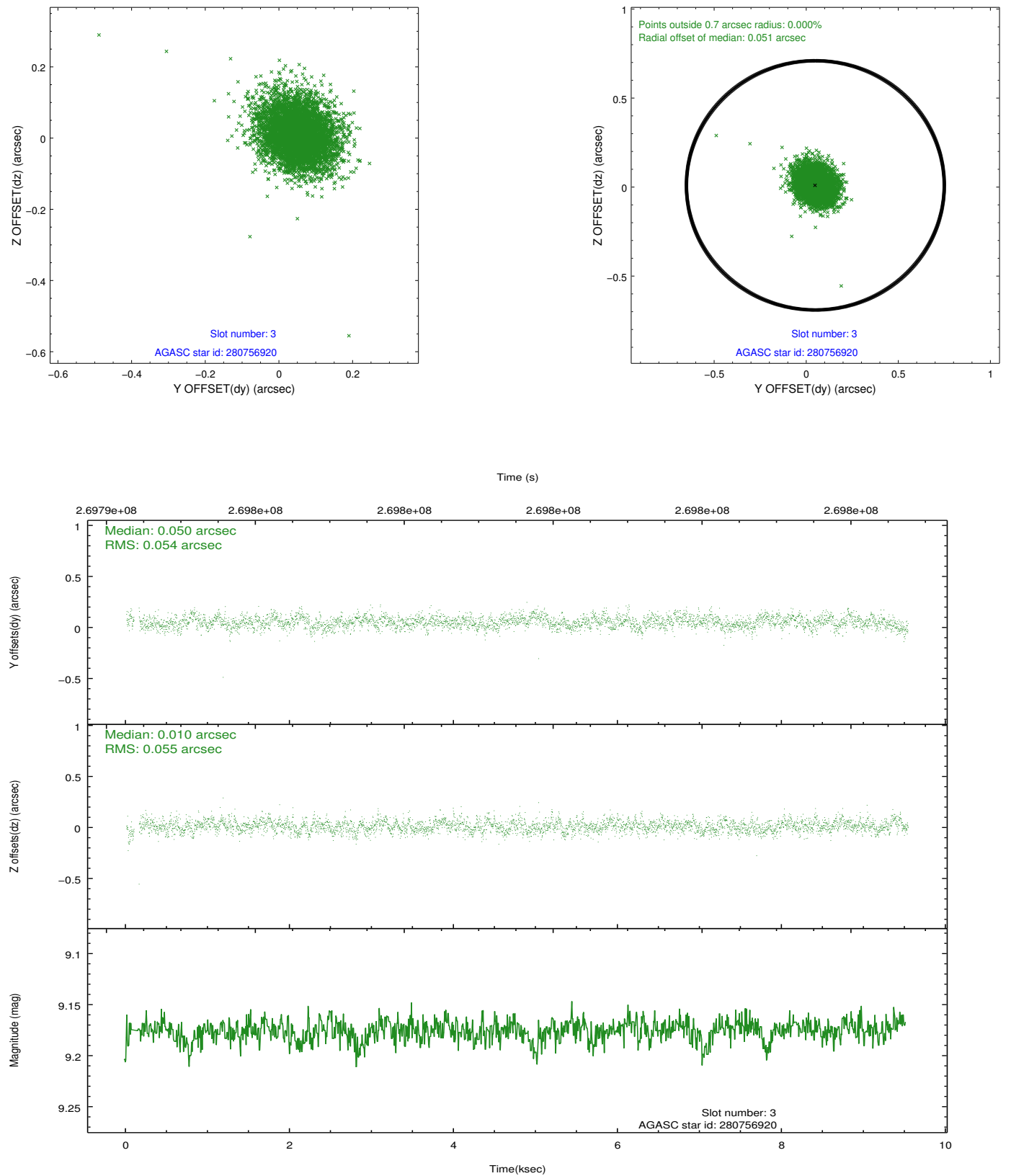


Slot Statistics

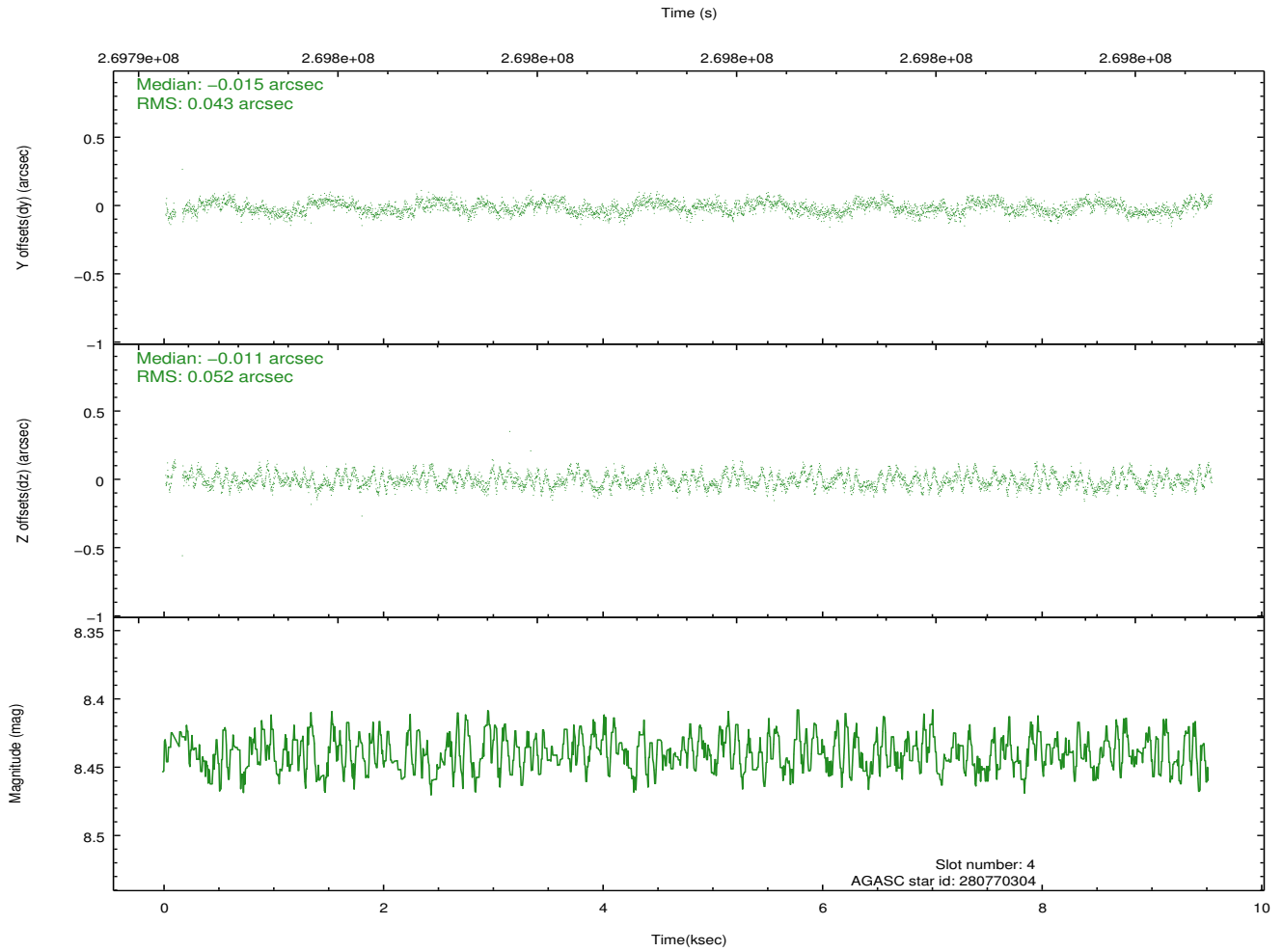
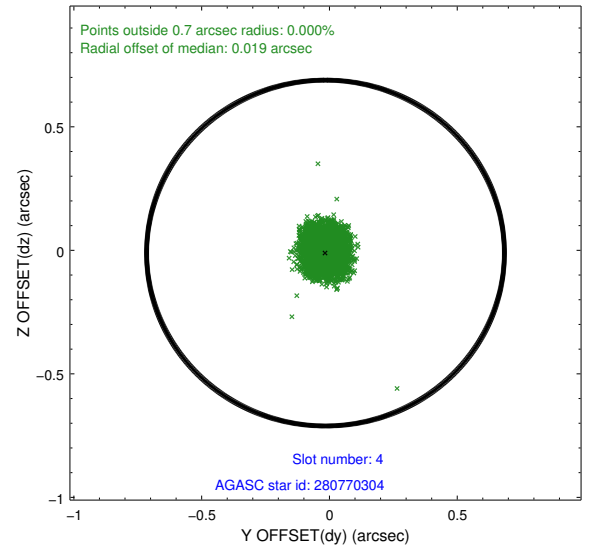
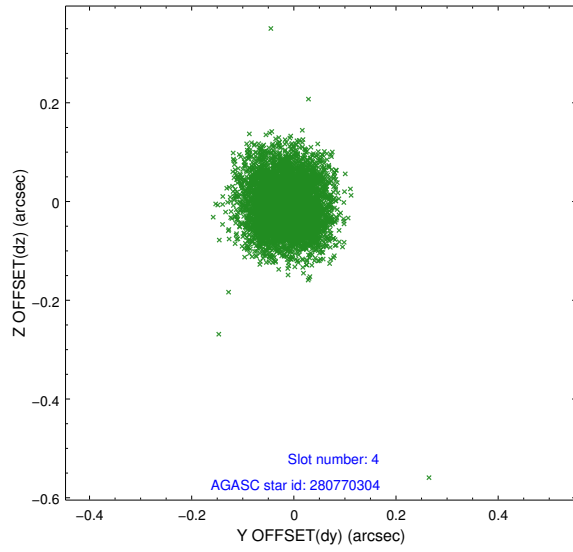
	status	id	mag	n_pts	med_dy	med_dz	drl
	FID	ACIS-S-2	7.11	2309	-0.075	-0.048	0.006
	FID	ACIS-S-4	7.21	2310	0.073	0.040	0.006
	FID	ACIS-S-6	7.36	2309	-0.025	0.015	0.007
	GUIDE	280756920	9.18	4617	0.050	0.010	0.080
	GUIDE	280770304	8.44	4617	-0.015	-0.011	0.072
	GUIDE	280772160	9.14	4619	-0.021	0.052	0.078
	GUIDE	280774592	8.70	4618	-0.015	-0.052	0.063
0.0000.0000.0000.0000000.00000000.000.00							

2.4 Star Slots

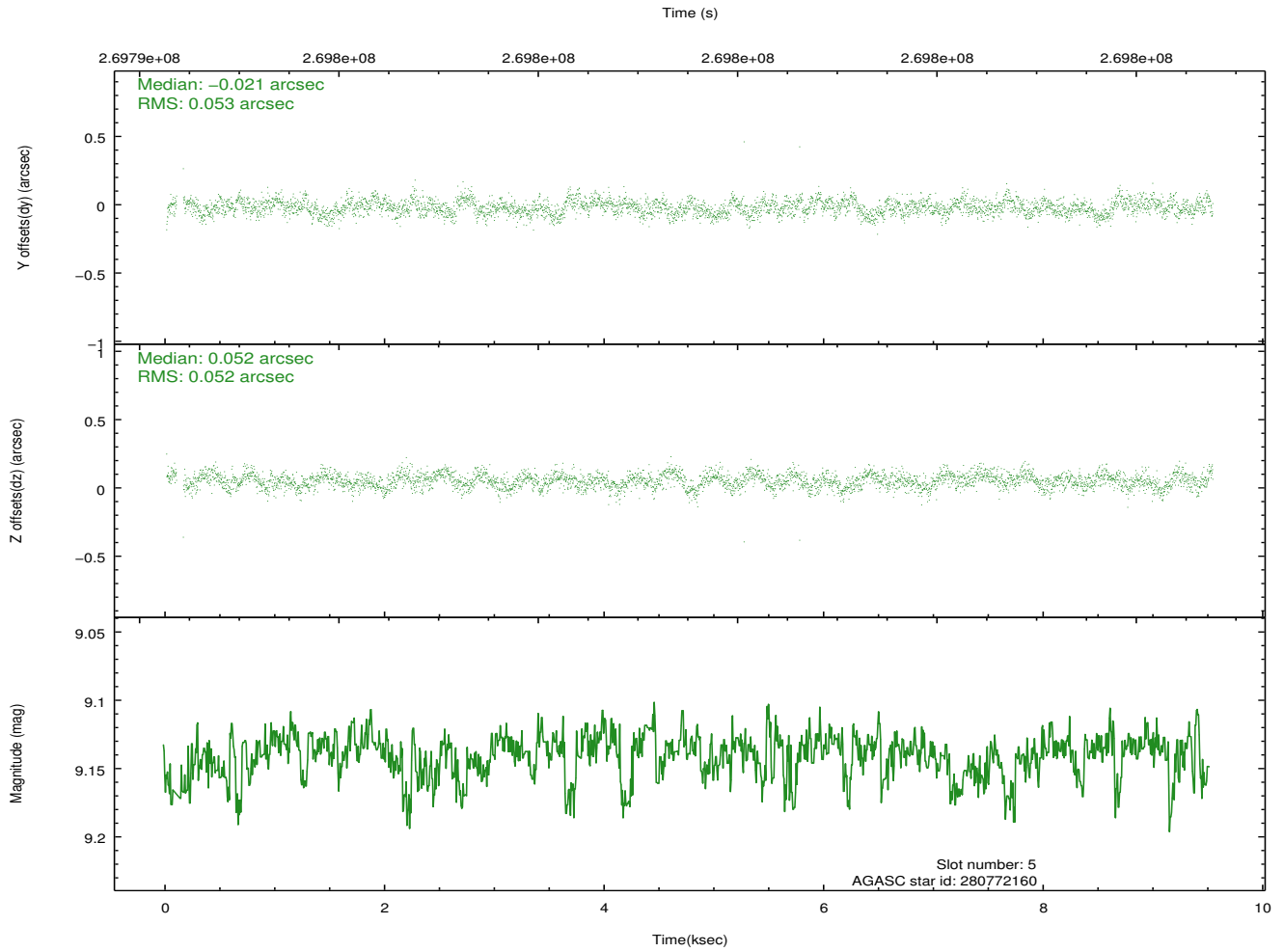
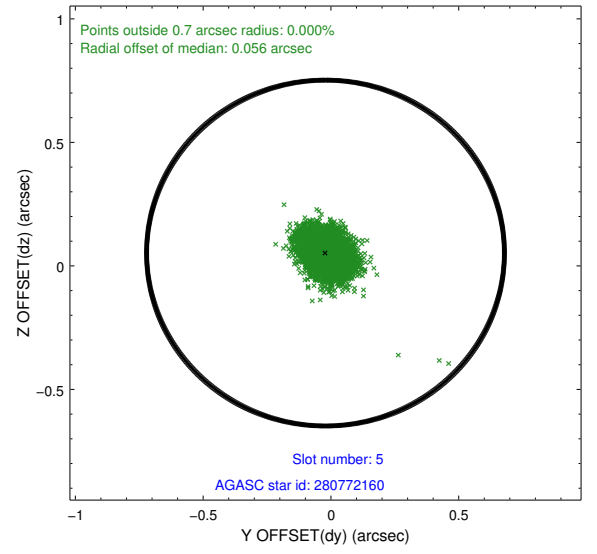
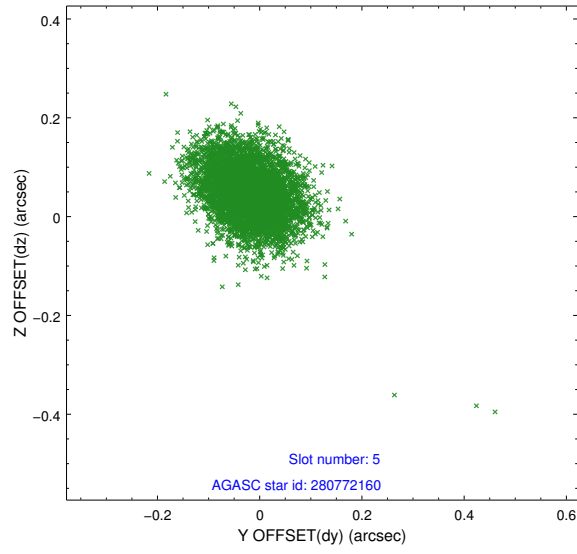
2.4.1 Slot 3



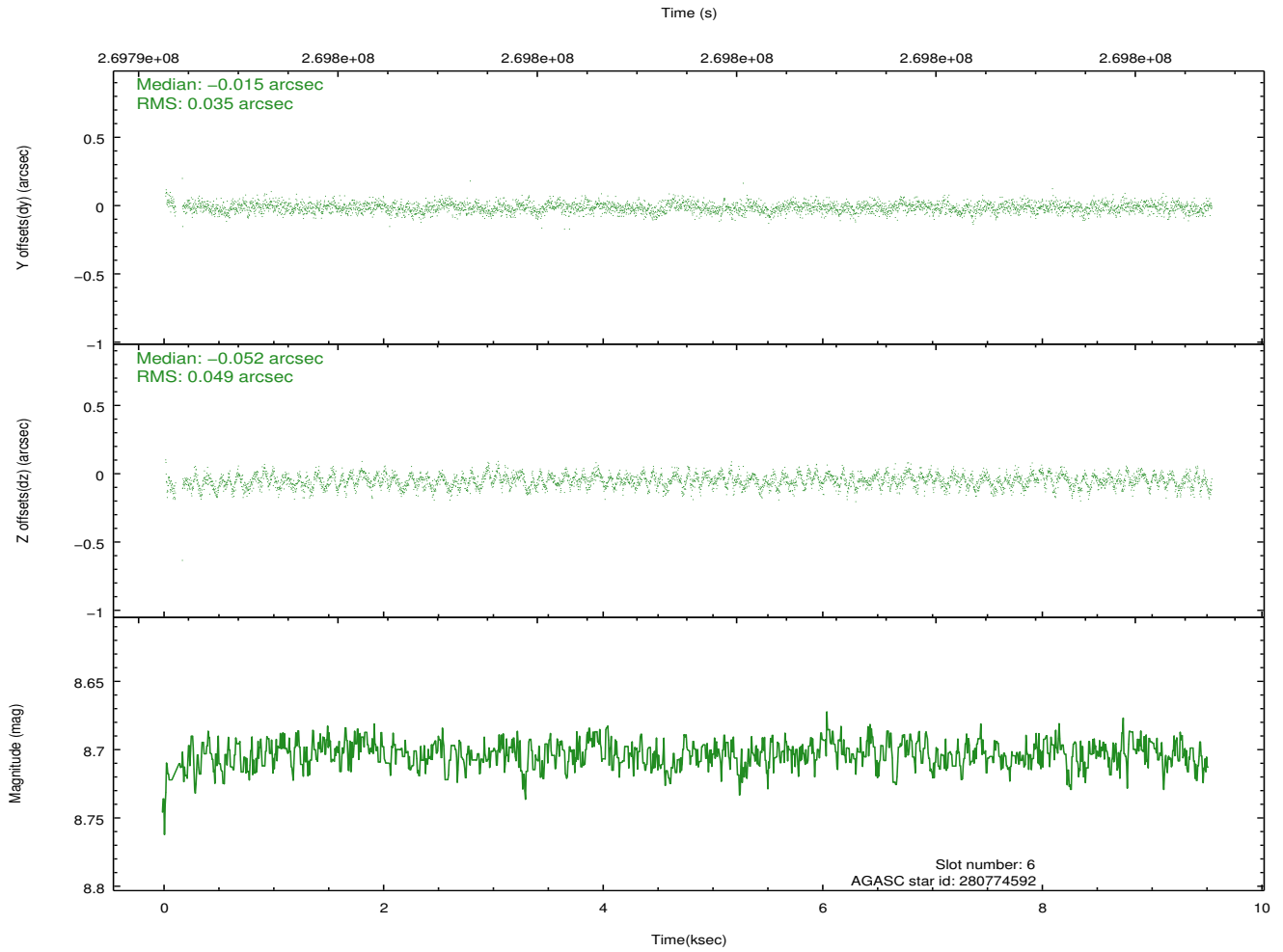
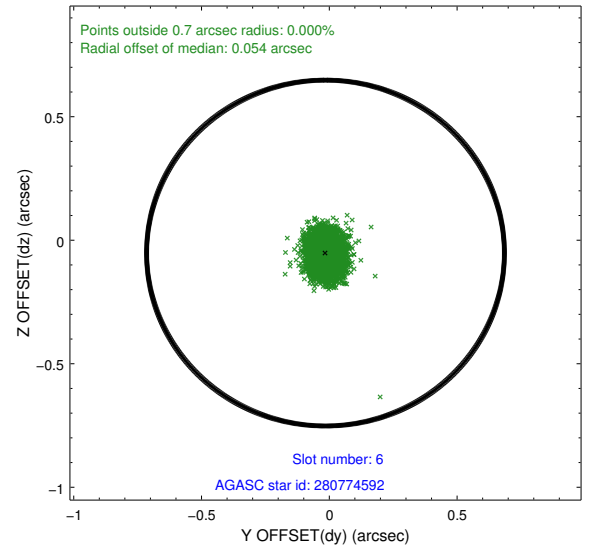
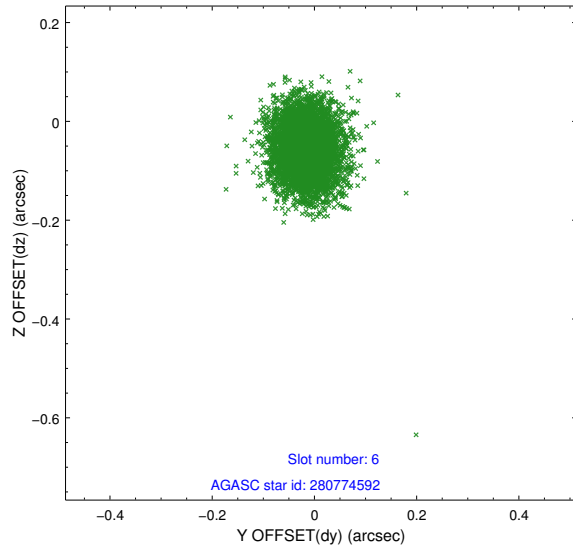
2.4.2 Slot 4



2.4.3 Slot 5

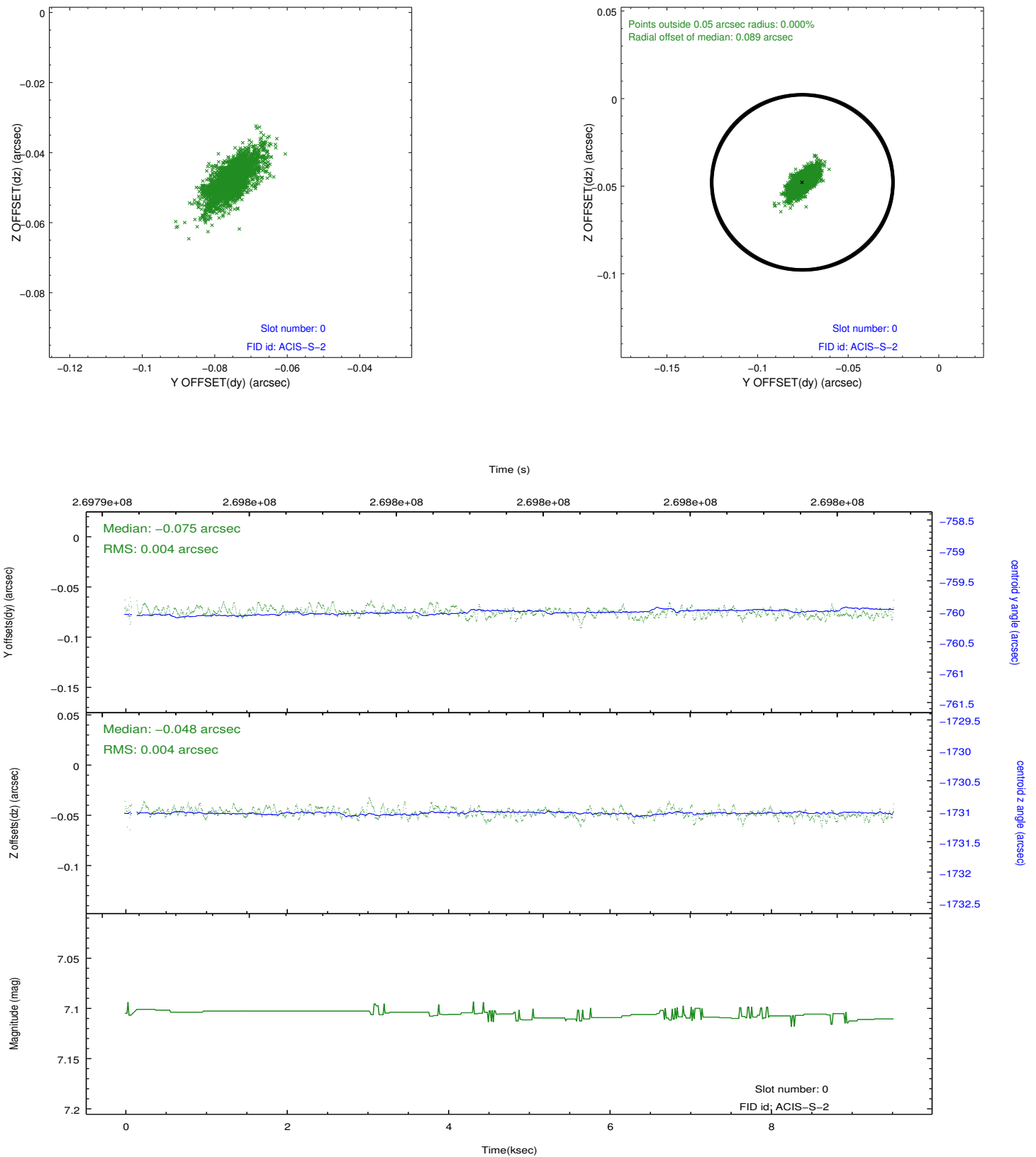


2.4.4 Slot 6

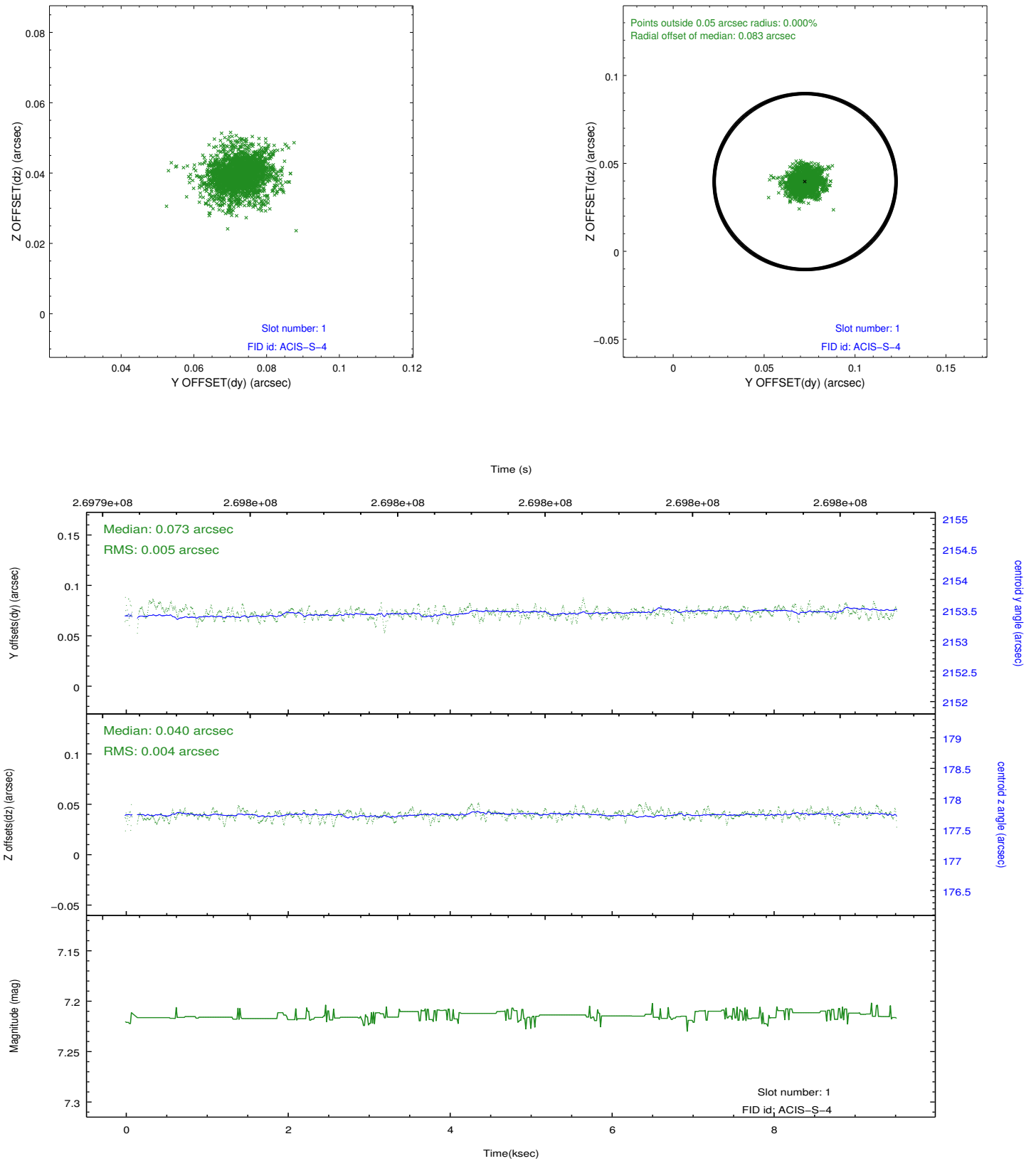


2.5 FID Slots

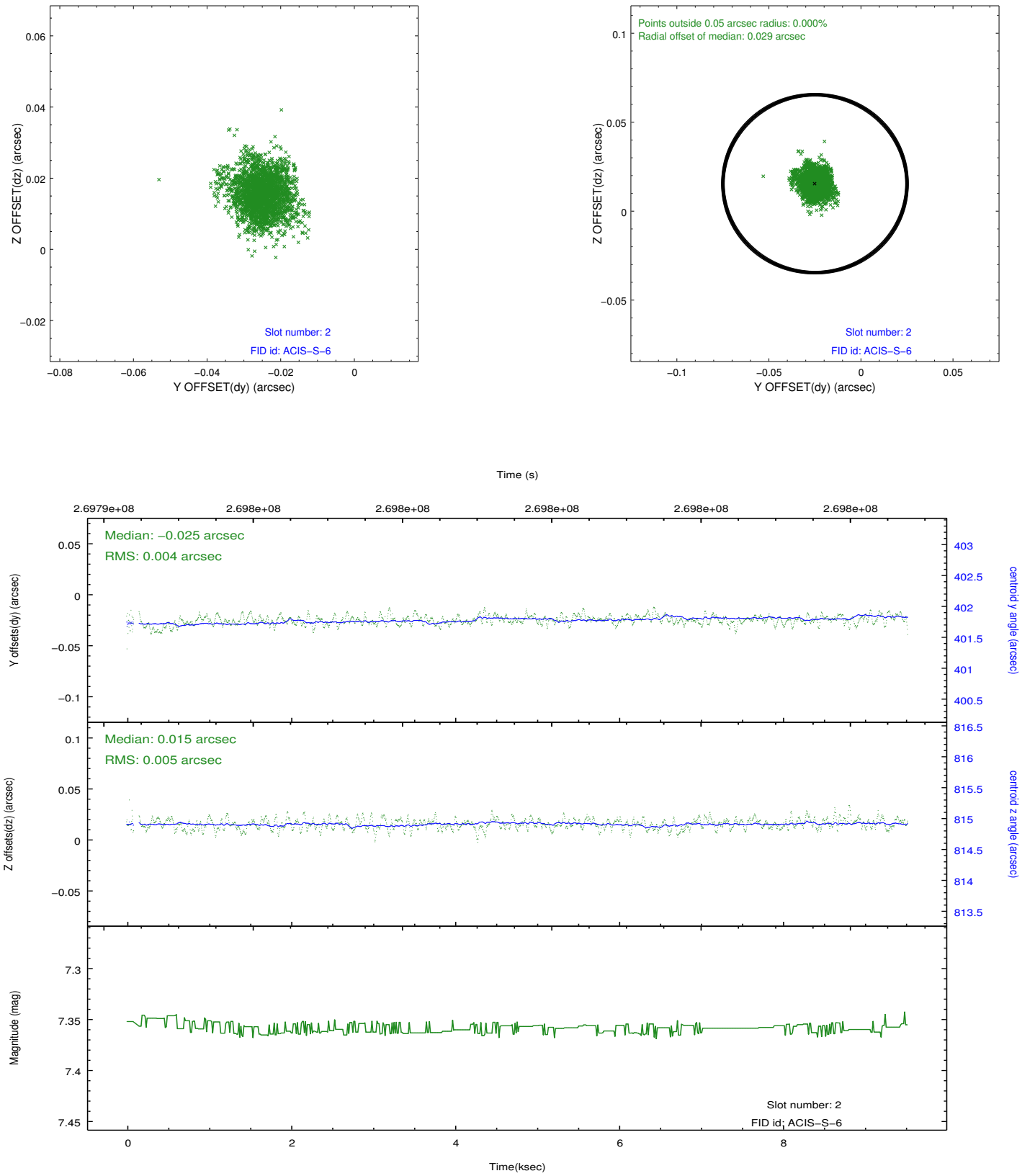
2.5.1 Slot 0



2.5.2 Slot 1



2.5.3 Slot 2



A Summary

A.1 Status

V&V Scientist	Jen Lauer
V&V Date (YYYY-MM-DD)	2012.04.05
V&V Edition	1
V&V Disposition and Status	OK
V&V Charge Time	9.37599996

A.2 Comments

Time constraint met.