

V&V Reference Report

L2 ASCDS Version : 8.4.3

Observation 7269 - L2 Version 2
Chandra X-Ray Center

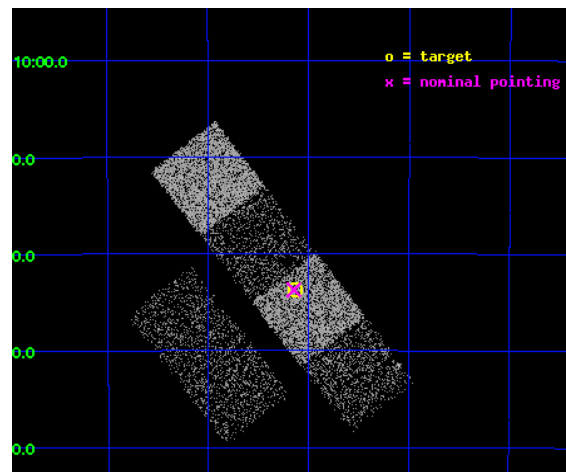
L2 Processing Date : Mar 24 2012

Contents

1	Front	2
2	OBI	3
2.1	OBI	3
2.1.1	Images	3
2.1.2	Bias	3
2.1.3	Parameters	4
2.1.4	Events	4
2.2	Compared Parameters	5
2.3	Aspect	6
2.4	Star Slots	9
2.4.1	Slot 3	9
2.4.2	Slot 4	10
2.4.3	Slot 5	11
2.4.4	Slot 6	12
2.4.5	Slot 7	13
2.5	FID Slots	14
2.5.1	Slot 0	14
2.5.2	Slot 1	15
2.5.3	Slot 2	16
A	Summary	17
A.1	Status	17
A.2	Comments	17

1 Front

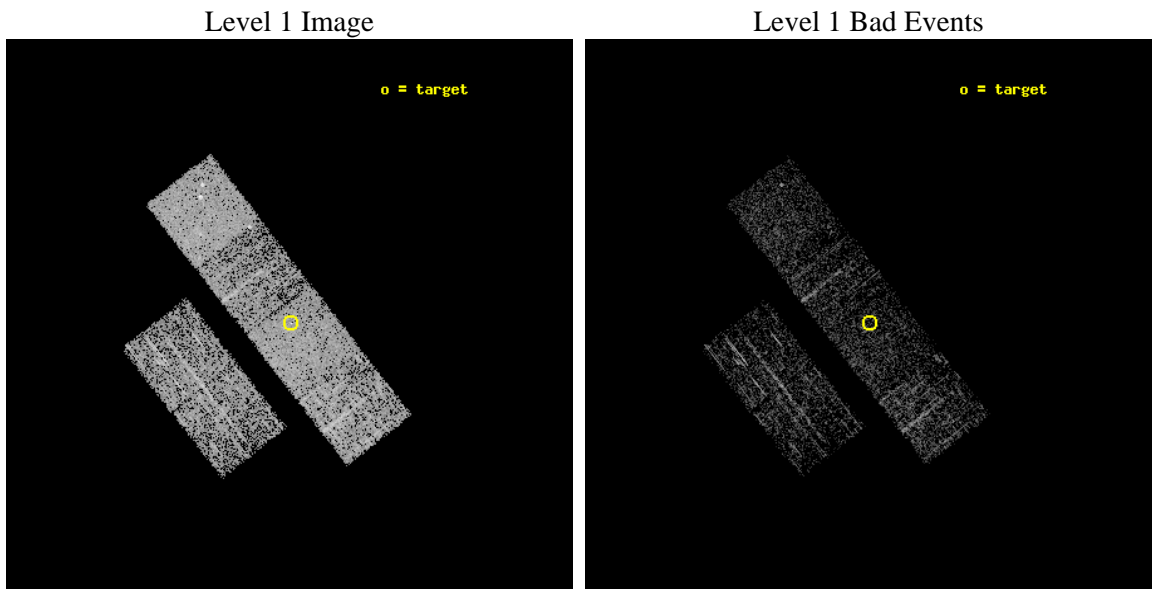
seq_num	400558	Sequence number
obs_id	7269	Observation id
title	Eruptive Behavior in HD 109962: A compact object interacting with a W UMa system?	Proposal title
observer	Prof. Frederick Walter	Principal investigator
object	HD 109962	Source name
dtcycle	0	
cycle	P	events from which exps? Prim/Second/Both
ra_targ	189.782917	Observer's specified target RA [deg]
dec_targ	-45.562278	Observer's specified target Dec [deg]
ra_nom	189.78640477041	Nominal RA [deg]
dec_nom	-45.562129815836	Nominal Dec [deg]
roll_nom	52.048846069795	Nominal Roll [deg]
revision	2	Processing version of data
ontime	1161.5999956727	Sum of GTIs [s]
livetime	1146.8911170959	Livetime [s]
ontime2	1161.5999956727	Sum of GTIs [s]
ontime3	1161.5999956727	Sum of GTIs [s]
ontime5	1161.5999956727	Sum of GTIs [s]
ontime6	1161.5999956727	Sum of GTIs [s]
ontime7	1161.5999956727	Sum of GTIs [s]
ontime8	1161.5999956727	Sum of GTIs [s]
l2events	15851	Number of level 2 events



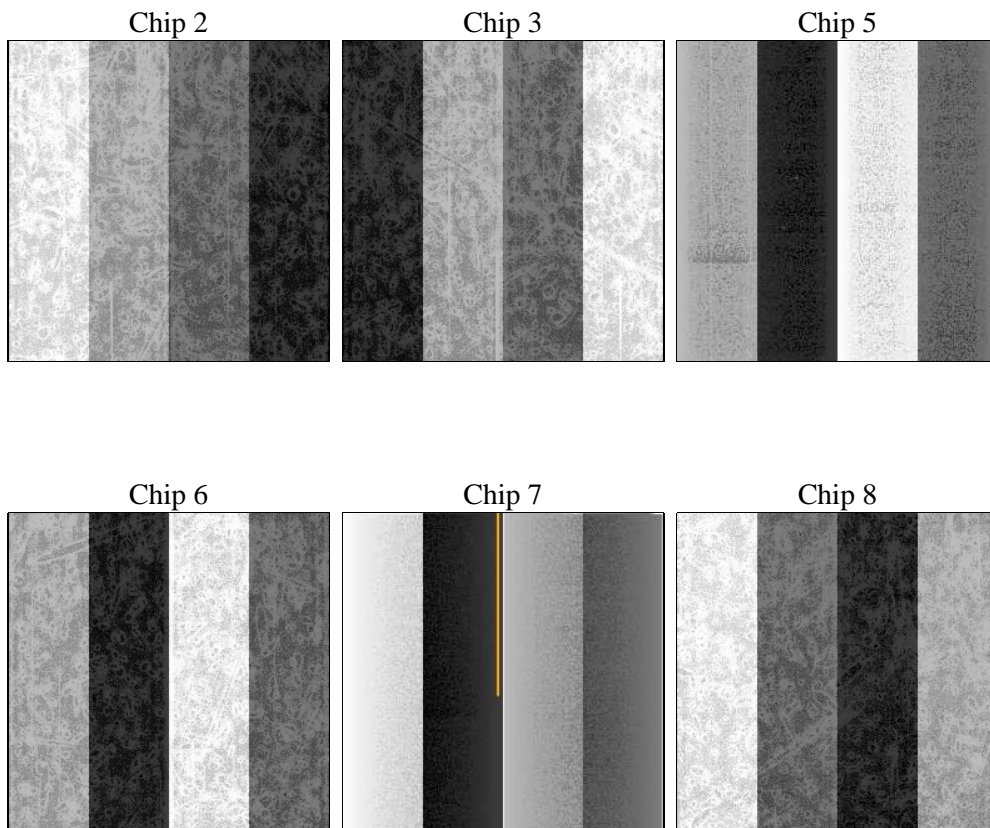
2 OBI

2.1 OBI

2.1.1 Images



2.1.2 Bias



2.1.3 Parameters

obi_num	0	Obi number	sched_exp_time	1000.000000	[s] Scheduled observation exposure time
ascdsver	8.4.3	Processing system revision	ontime	1161.5999956727	Sum of GTIs [s]
caldsver	4.4.8	 	ontime2	1161.5999956727	Sum of GTIs [s]
date	2012-03-24T23:22:27	Date and time of file creation	ontime3	1161.5999956727	Sum of GTIs [s]
revision	2	Processing version of data	ontime5	1161.5999956727	Sum of GTIs [s]
			ontime6	1161.5999956727	Sum of GTIs [s]
			ontime7	1161.5999956727	Sum of GTIs [s]
			ontime8	1161.5999956727	Sum of GTIs [s]
			l1events	75272	Number of level 1 events

2.1.4 Events

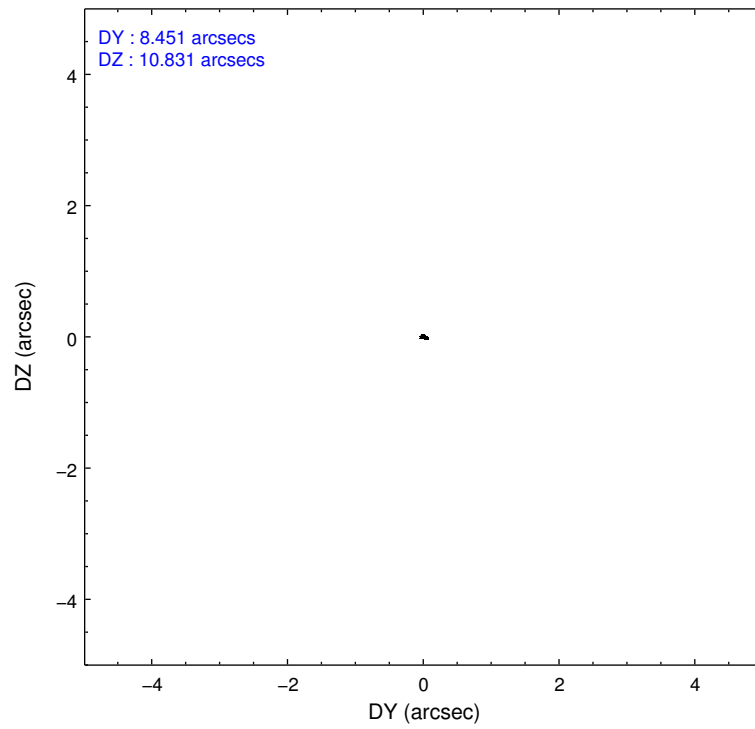
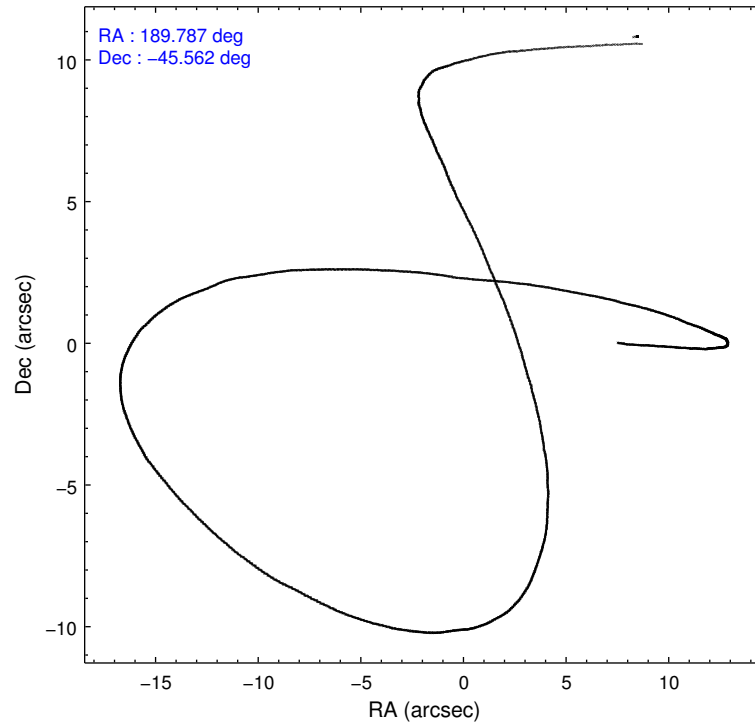
	ccd 2	ccd 3	ccd 5	ccd 6	ccd 7	ccd 8
level 1 events	10991	9795	16453	9827	14148	14058
rejected events	9896	8693	9331	8637	8687	11330
rejected %	90%	88%	56%	87%	61%	80%

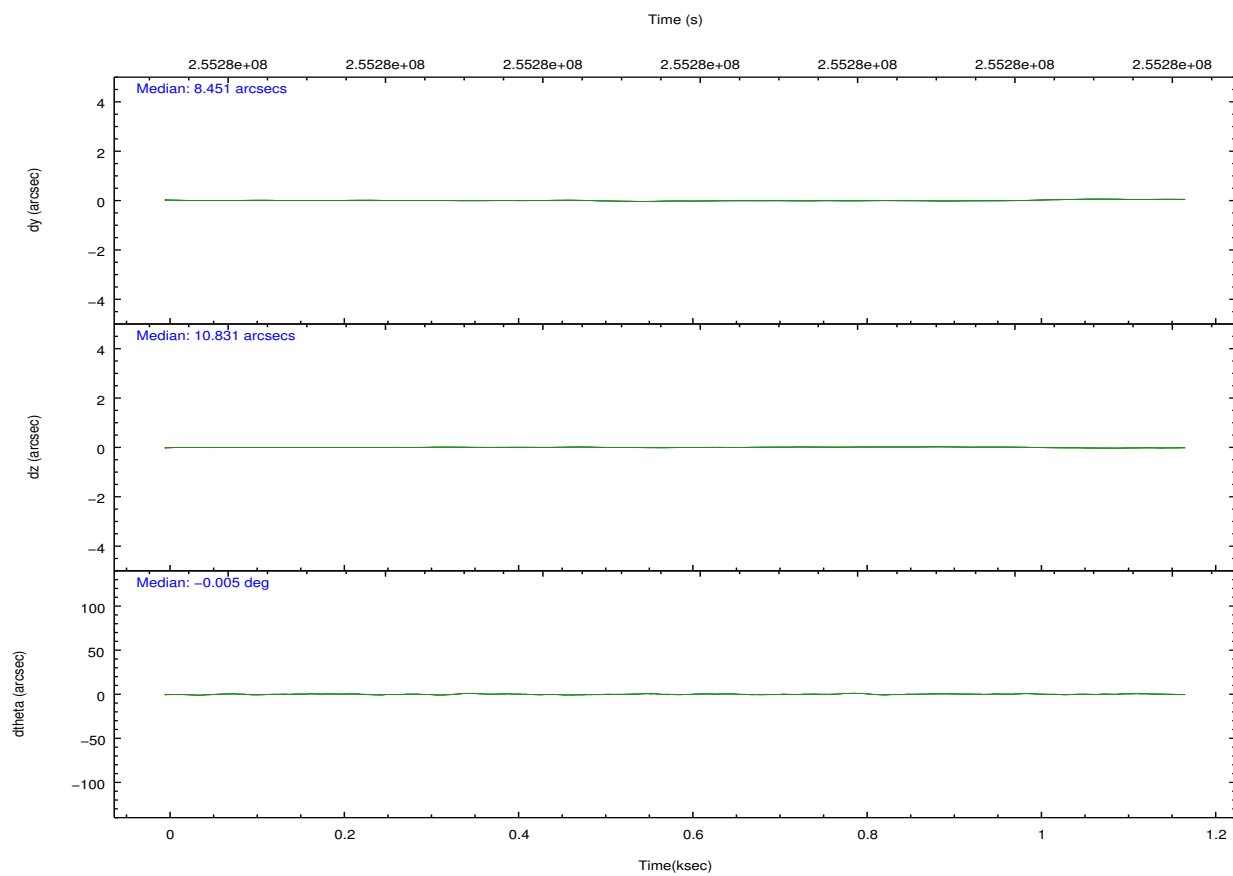
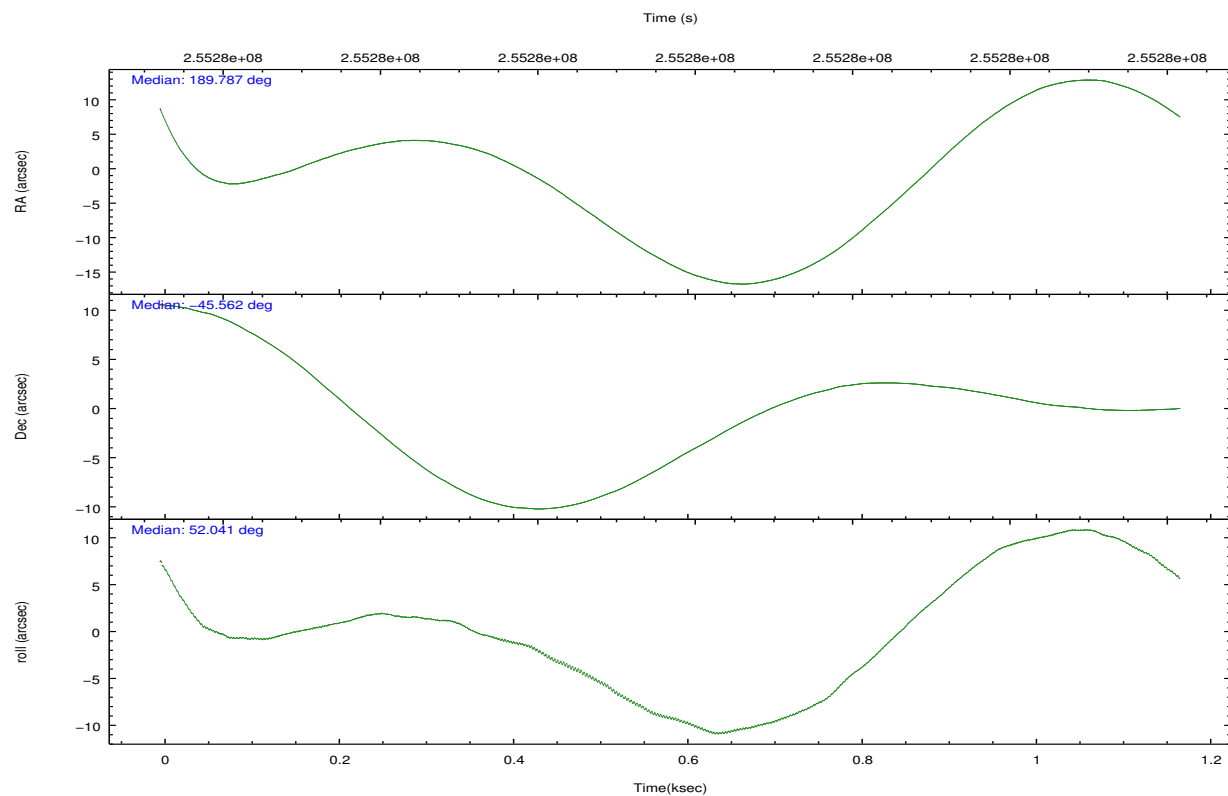
	ccd 2	ccd 3	ccd 5	ccd 6	ccd 7	ccd 8
grade 0 events	558	519	966	466	555	939
	5%	5%	5%	4%	3%	6%
grade 1 events	9	6	43	6	12	11
	0%	0%	0%	0%	0%	0%
grade 2 events	235	222	2322	265	1200	664
	2%	2%	14%	2%	8%	4%
grade 3 events	116	116	290	133	501	242
	1%	1%	1%	1%	3%	1%
grade 4 events	110	126	280	136	523	229
	1%	1%	1%	1%	3%	1%
grade 5 events	437	467	1195	539	1352	651
	3%	4%	7%	5%	9%	4%
grade 6 events	171	202	3845	289	3119	873
	1%	2%	23%	2%	22%	6%
grade 7 events	9355	8137	7512	7993	6886	10449
	85%	83%	45%	81%	48%	74%

2.2 Compared Parameters

Parameter	Planned	Actual	Parameter	Planned	Actual
Instrument	ACIS	ACIS	Obspar format version number	7	7
Detector	ACIS-235678	ACIS-235678	Obspar file type	PREDICTED	ACTUAL
Grating	NONE	NONE	Obspar update status	NONE	UPDATED
Data mode	FAINT	FAINT	Number of optional ACIS chips dropped	0	0
Observation mode	POINTING	POINTING	On-chip summing requested	N	N
[deg] Pointing RA	189.781028	189.786404770406	Subarray requested	NONE	NONE
[deg] Pointing Dec	-45.589341	-45.56212981583606	Alternating exposures requested	N	N
[deg] Pointing Roll	51.888343	52.04884606979513	[s] Primary exposure time	0.000000	3.2
[mm] SIM focus pos	-0.684267	-0.6828225247311905			
[mm] SIM defocus	0	0.001444936568705701			
[mm] SIM translation stage pos	-190.132523	-190.1425803651734			
[mm] SIM translation stage offset	0	0.01005778216563158			
[s] Observation start time (MET)	255276948.184000	255275838.84644			
Observation start date	2006-02-02T14:14:43	2006-02-02T13:57:18			
[s] Observation end time (MET)	255277948.184000	255279667.22162			
Observation end date	2006-02-02T14:31:23	2006-02-02T15:01:07			
Read mode	TIMED	TIMED			

2.3 Aspect



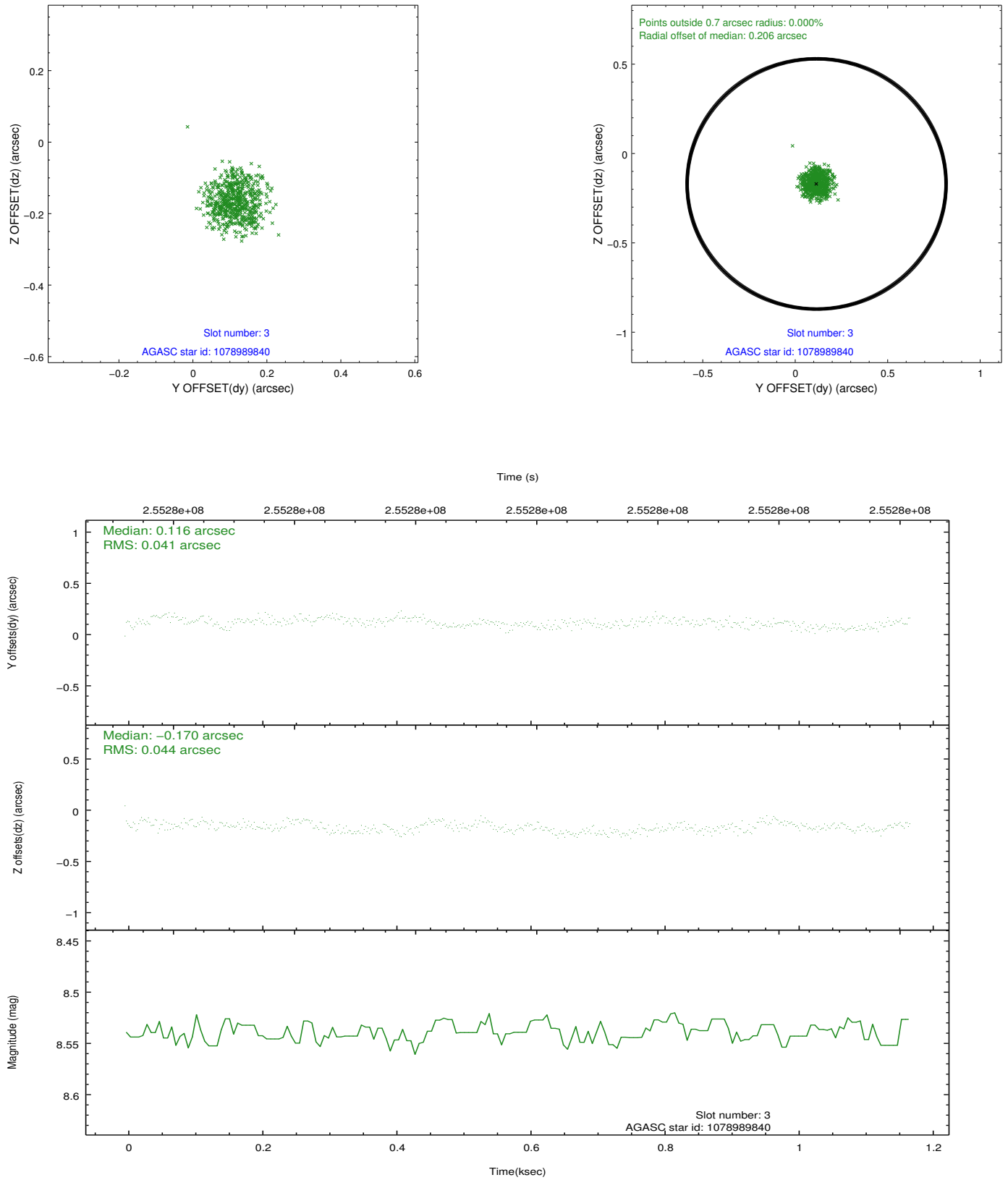


Slot Statistics

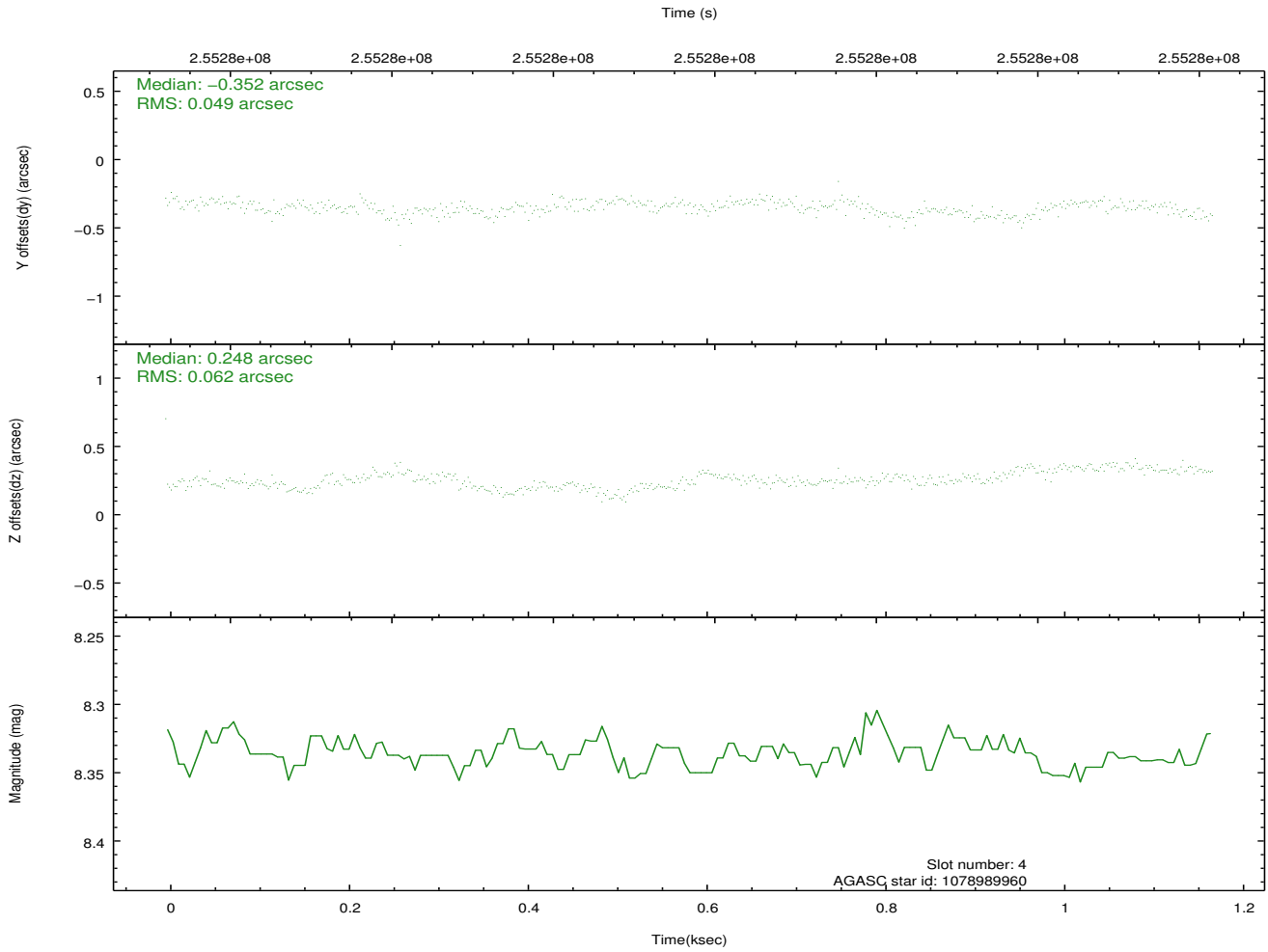
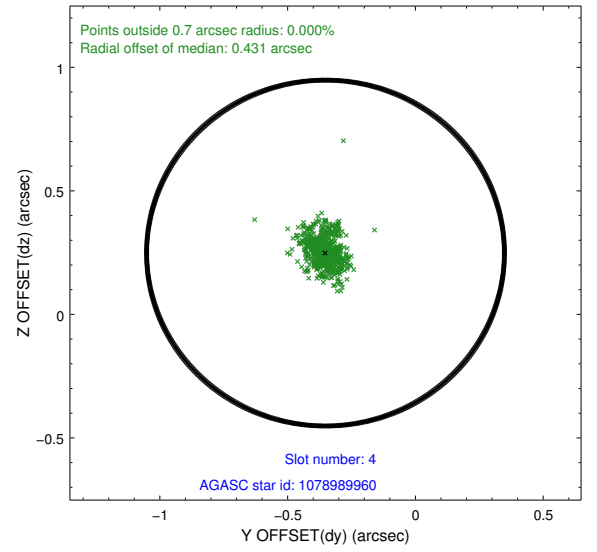
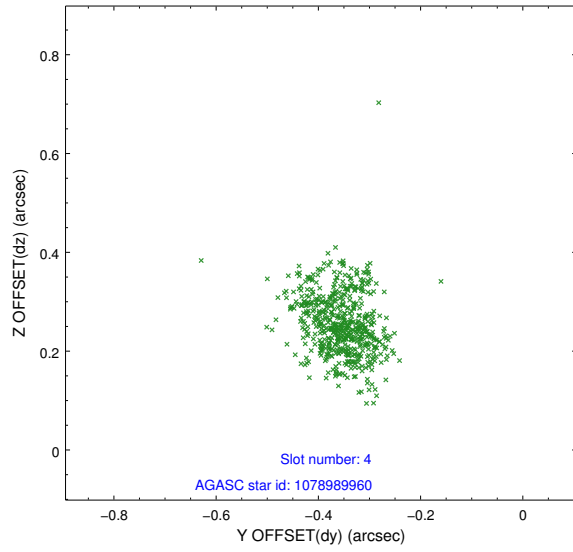
slot	status	id	mag	n_pts	med_dy	med_dz	dr1	dr2	ra	dec	mean_y	mean_z
0	FID	ACIS-S-2	7.11	286	-0.039	-0.016	0.010	0.017	0.000000	0.000000	-761.25	-1732.08
1	FID	ACIS-S-4	7.21	286	0.132	0.023	0.012	0.024	0.000000	0.000000	2149.57	170.61
2	FID	ACIS-S-5	7.23	286	-0.126	0.001	0.010	0.020	0.000000	0.000000	-1806.90	170.65
3	GUIDE	1078989840	8.54	572	0.116	-0.170	0.066	0.099	189.148829	-45.715945	-1345.57	965.97
4	GUIDE	1078989960	8.34	572	-0.352	0.248	0.083	0.133	190.660799	-45.325177	2109.23	-1169.39
5	GUIDE	1078992264	9.76	571	0.065	-0.146	0.141	0.211	188.832299	-45.482310	-1183.71	2111.86
6	GUIDE	1079006976	8.03	572	0.013	0.312	0.078	0.115	189.947916	-46.312201	-1794.80	-1928.18
7	GUIDE	1078997488	9.09	571	0.168	-0.248	0.078	0.129	188.640418	-45.761212	-2275.50	1856.67

2.4 Star Slots

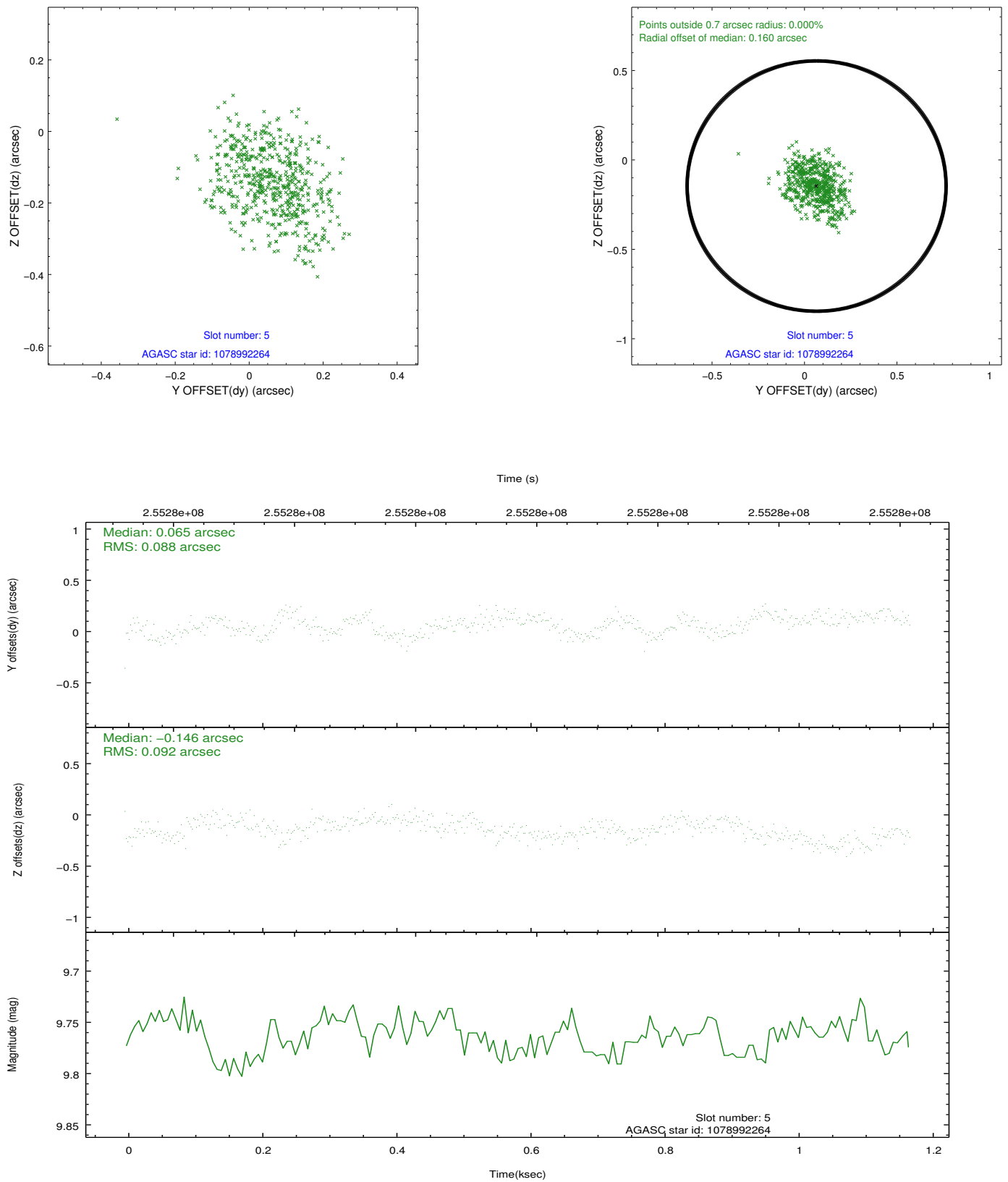
2.4.1 Slot 3



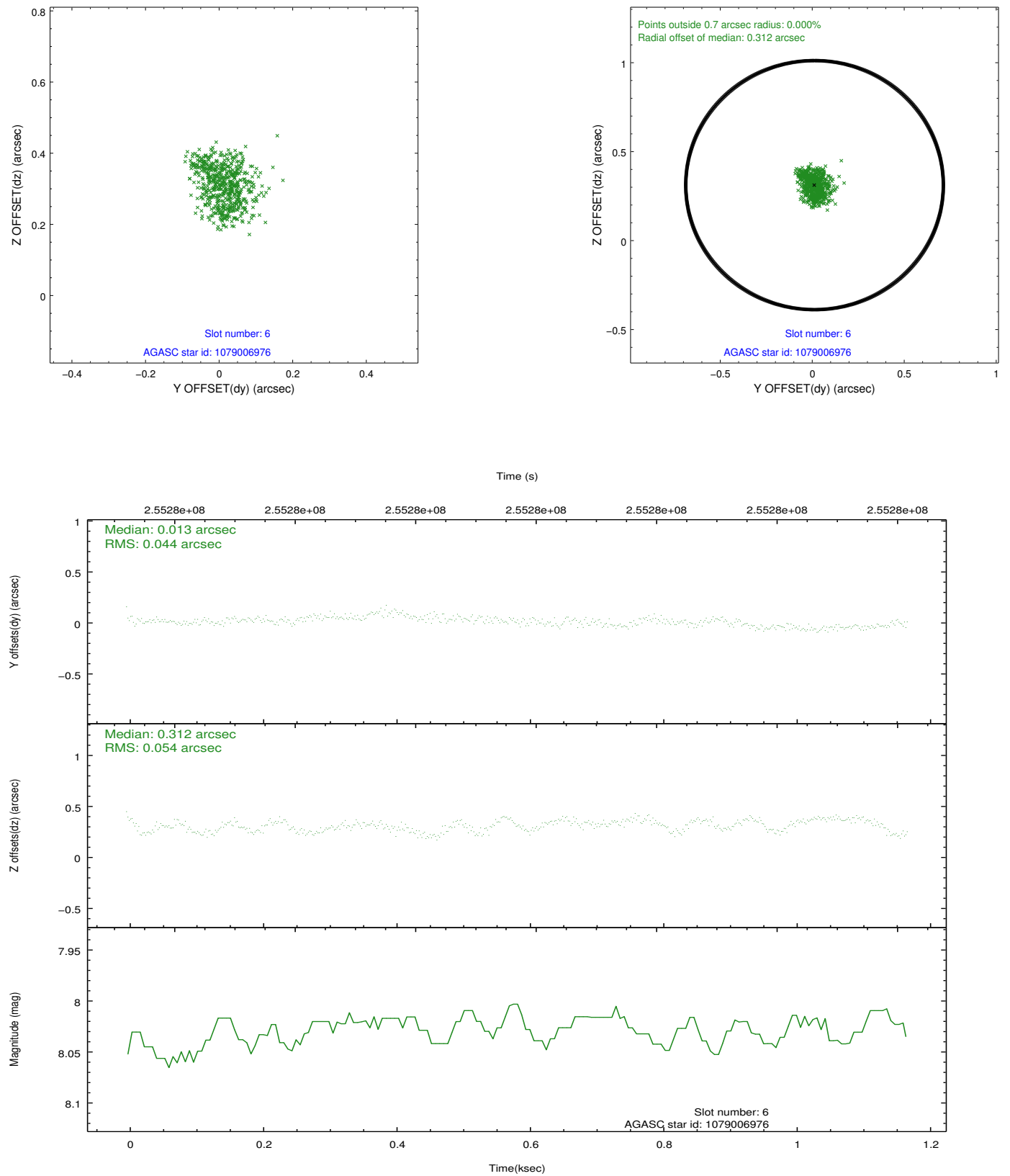
2.4.2 Slot 4



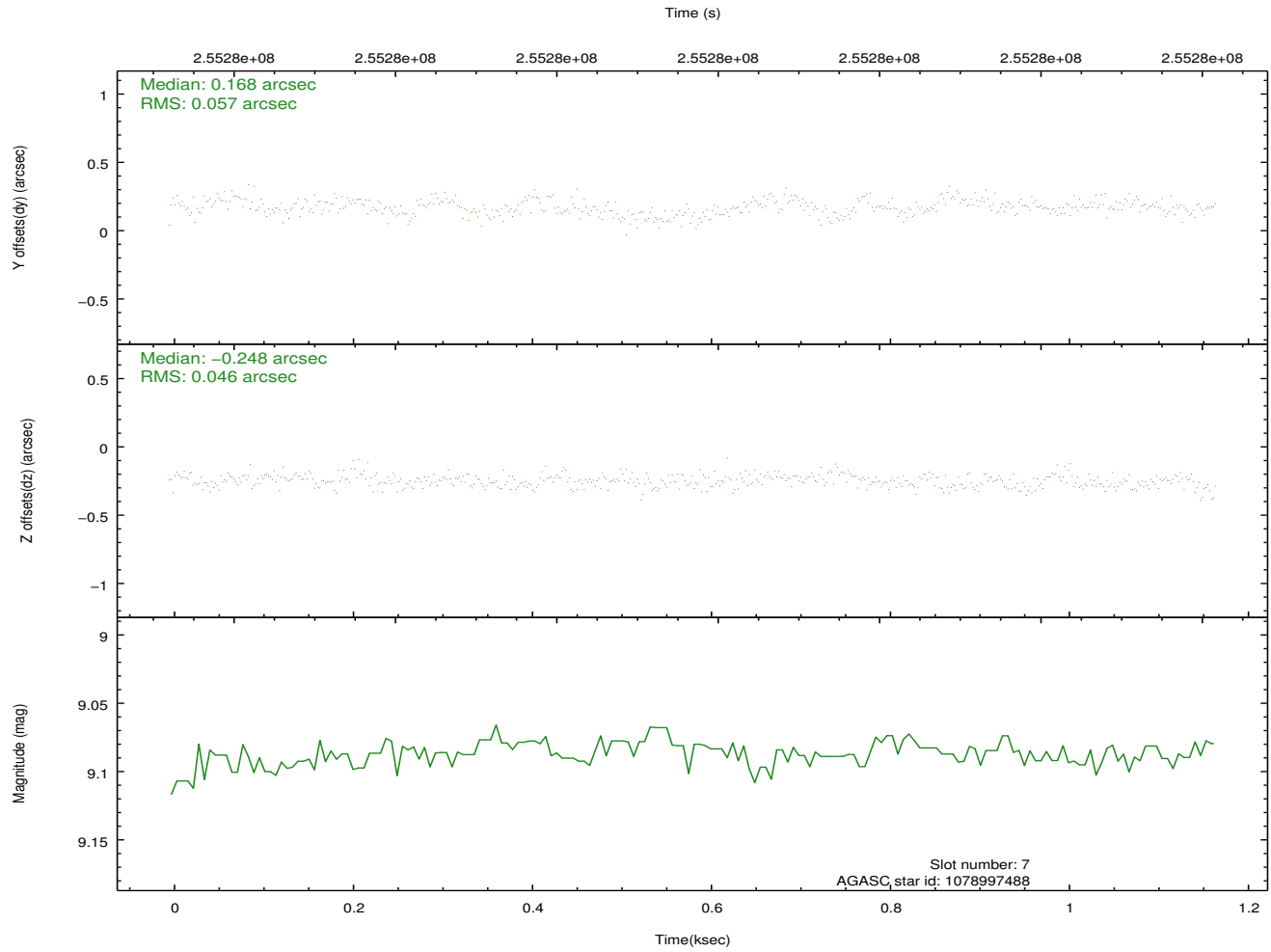
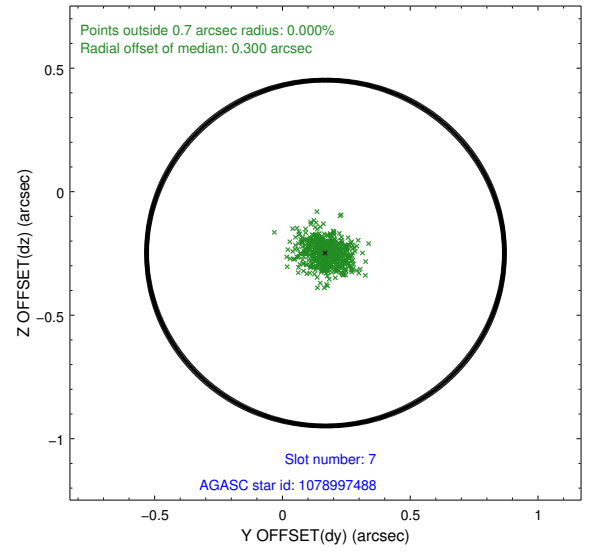
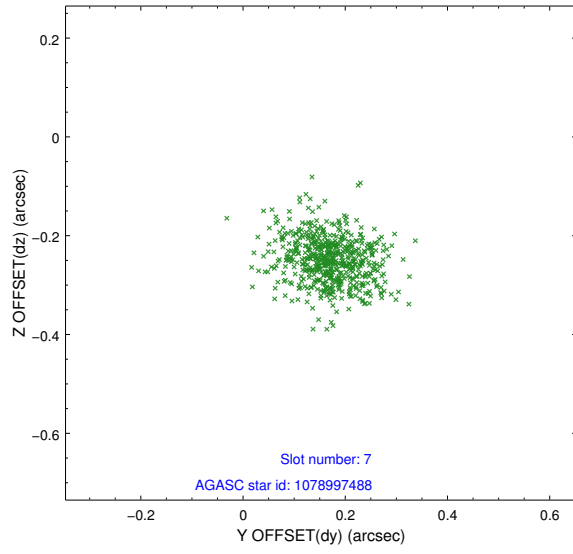
2.4.3 Slot 5



2.4.4 Slot 6

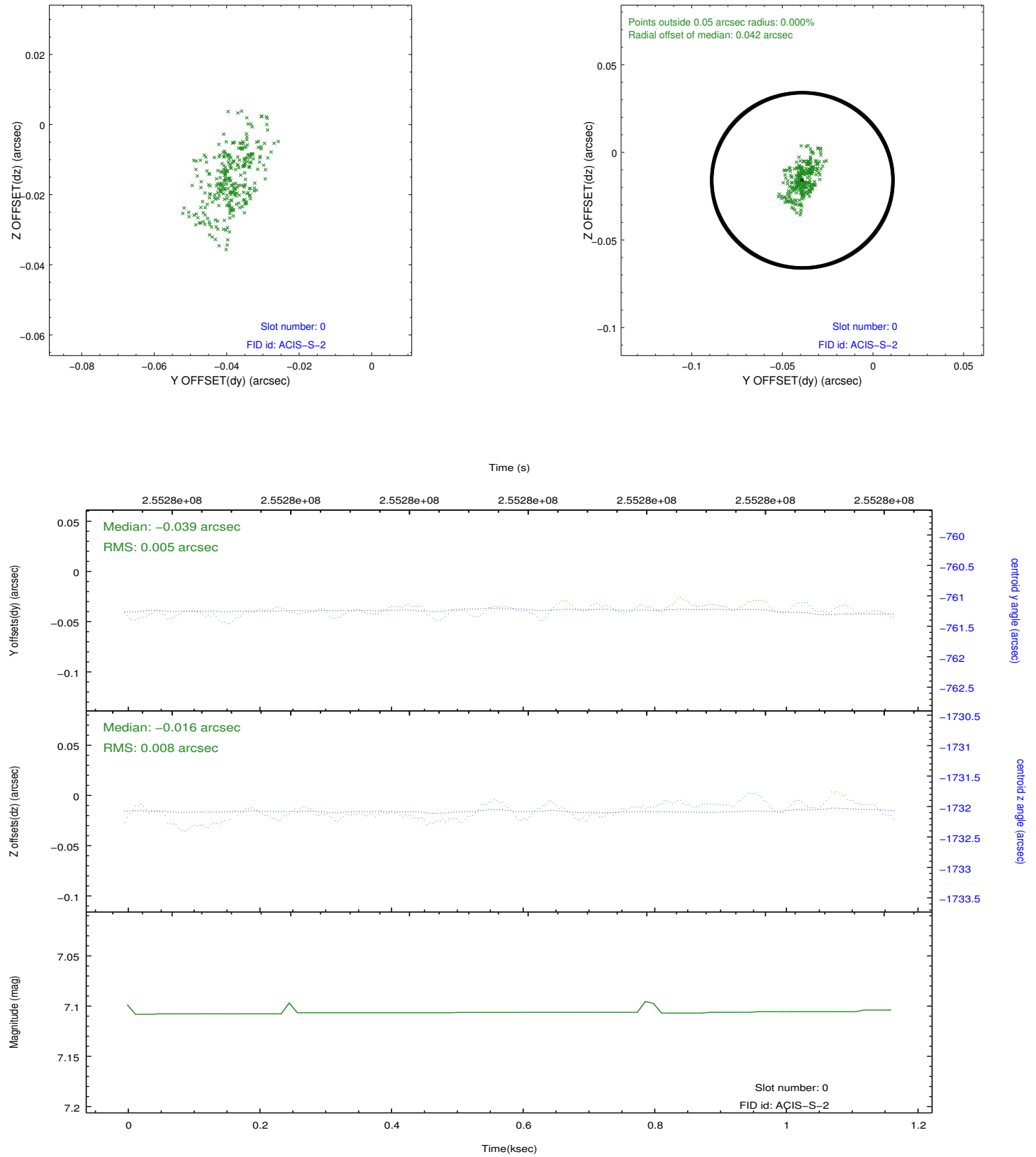


2.4.5 Slot 7

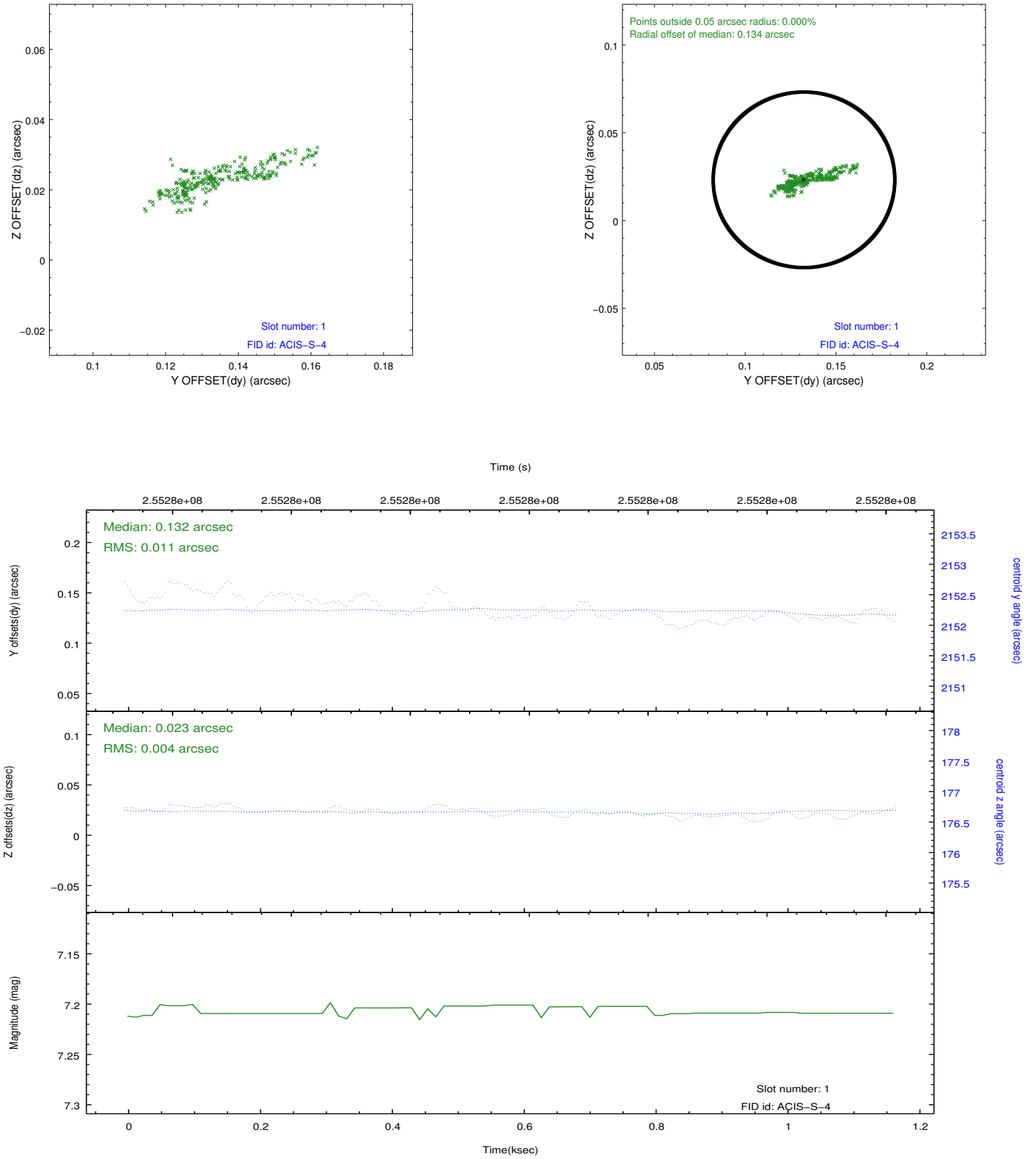


2.5 FID Slots

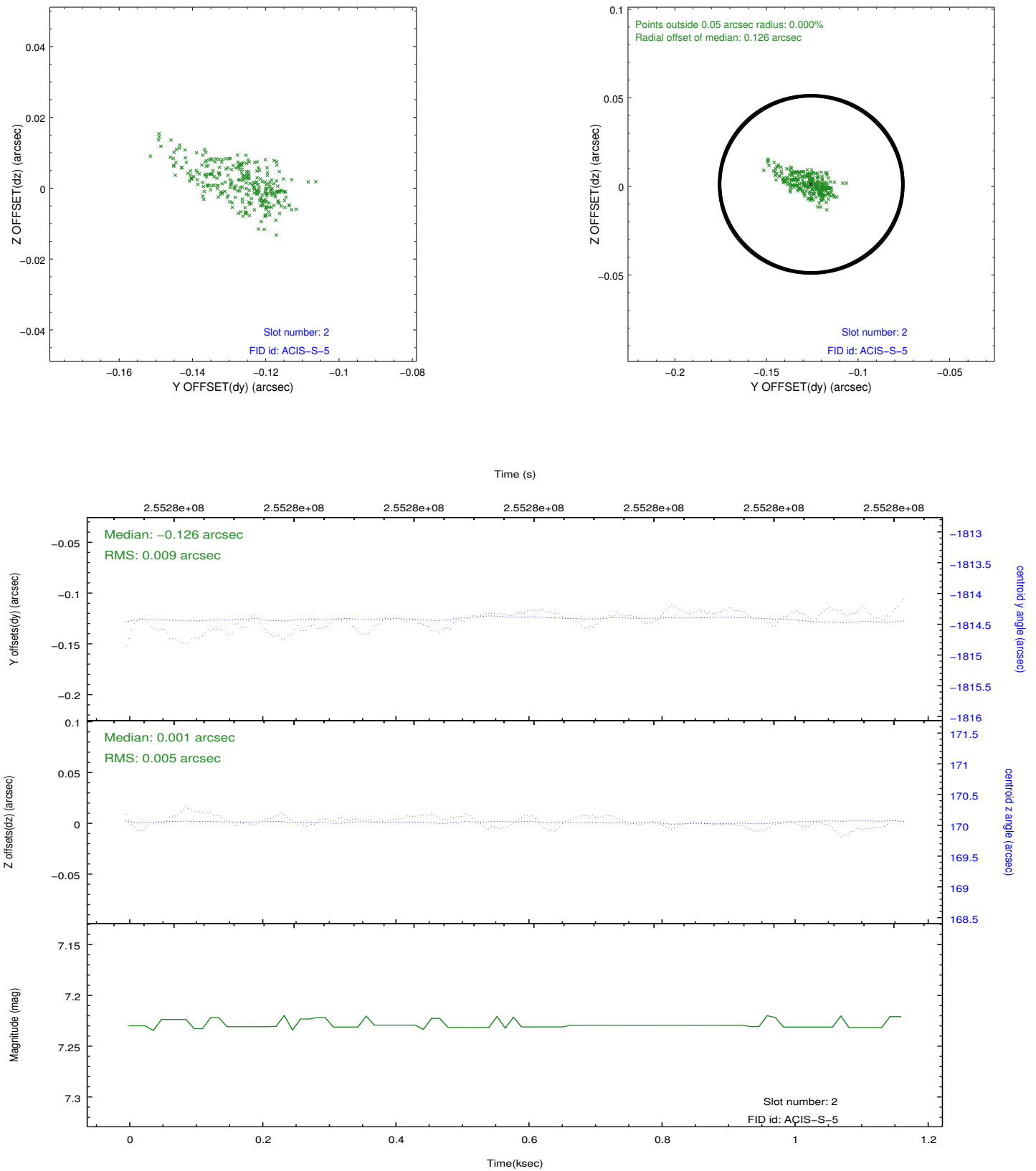
2.5.1 Slot 0



2.5.2 Slot 1



2.5.3 Slot 2



A Summary

A.1 Status

V&V Scientist	Jen Lauer
V&V Date (YYYY-MM-DD)	2012.03.26
V&V Edition	1
V&V Disposition and Status	OK
V&V Charge Time	1.16159999

A.2 Comments