

V&V Reference Report

L2 ASCDS Version : 8.4.3.1

Observation 6622 - L2 Version 2
Chandra X-Ray Center

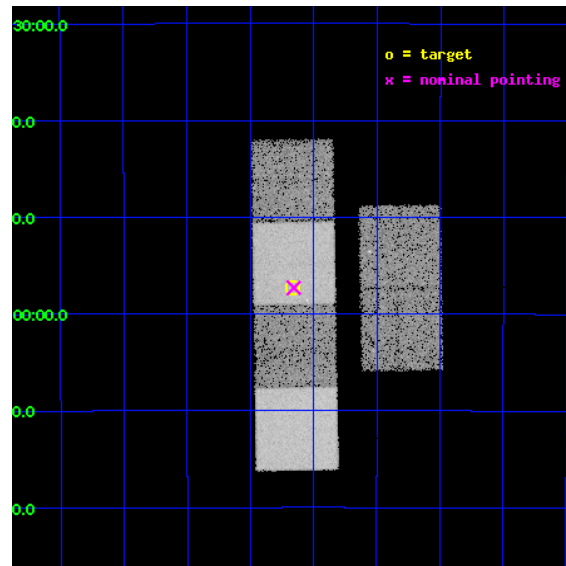
L2 Processing Date : Apr 9 2012

Contents

1	Front	2
2	OBI	3
2.1	OBI	3
2.1.1	Images	3
2.1.2	Bias	3
2.1.3	Parameters	4
2.1.4	Events	4
2.2	Compared Parameters	5
2.3	Aspect	6
2.4	Star Slots	9
2.4.1	Slot 3	9
2.4.2	Slot 4	10
2.4.3	Slot 5	11
2.4.4	Slot 6	12
2.4.5	Slot 7	13
2.5	FID Slots	14
2.5.1	Slot 0	14
2.5.2	Slot 1	15
2.5.3	Slot 2	16
A	Summary	17
A.1	Status	17
A.2	Comments	17

1 Front

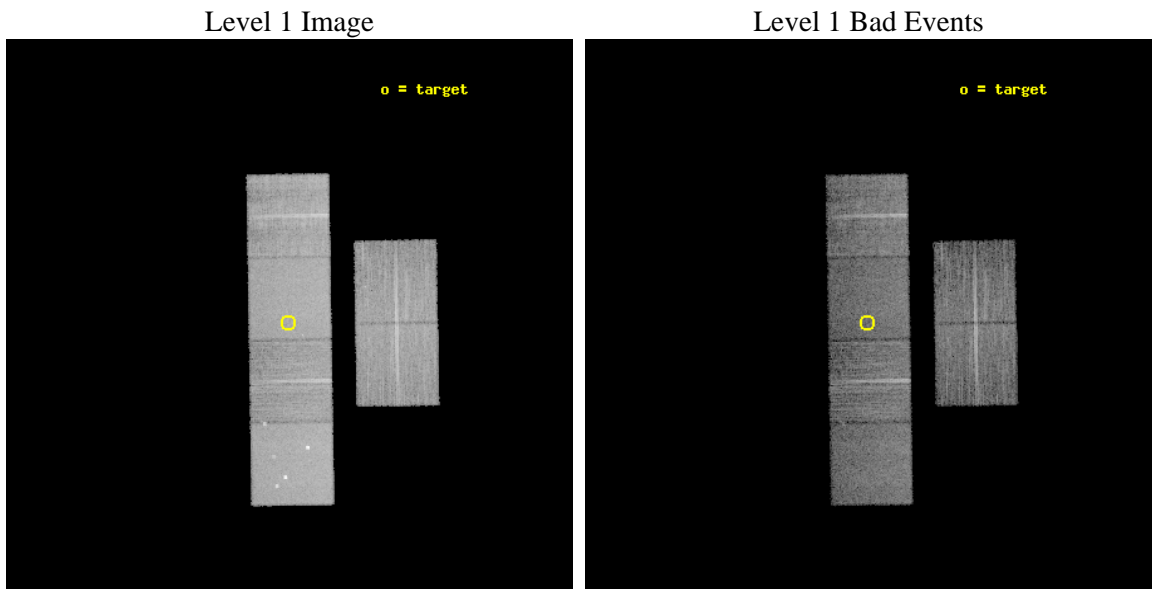
seq_num	400527	Sequence number
obs_id	6622	Observation id
title	X-ray Observations of Two Radio-Selected Transients Near the Galactic Center	Proposal title
observer	Dr. Paul Ray	Principal investigator
object	GCRT J1746-2757	Source name
dtcycle	0	
cycle	P	events from which exps? Prim/Second/Both
ra_targ	266.540833	Observer's specified target RA [deg]
dec_targ	-27.953889	Observer's specified target Dec [deg]
ra_nom	266.53893698011	Nominal RA [deg]
dec_nom	-27.955120381222	Nominal Dec [deg]
roll_nom	269.06435963595	Nominal Roll [deg]
revision	2	Processing version of data
ontime	9858.9077600241	Sum of GTIs [s]
livetime	9734.0683336451	Livetime [s]
ontime2	9858.9488000274	Sum of GTIs [s]
ontime3	9858.7846400142	Sum of GTIs [s]
ontime5	9858.8667200208	Sum of GTIs [s]
ontime6	9858.8256800175	Sum of GTIs [s]
ontime7	9858.9077600241	Sum of GTIs [s]
ontime8	9858.7436000109	Sum of GTIs [s]
l2events	153597	Number of level 2 events



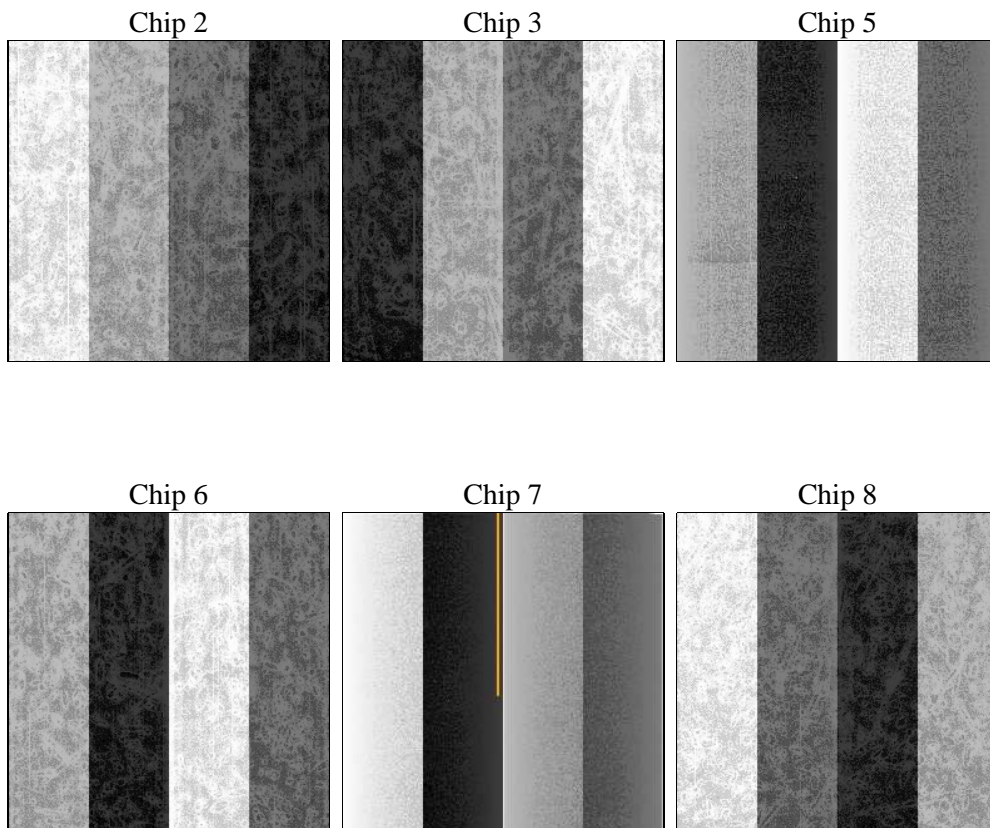
2 OBI

2.1 OBI

2.1.1 Images



2.1.2 Bias



2.1.3 Parameters

obi_num	0	Obi number	sched_exp_time	9706.656000	[s] Scheduled observation exposure time
ascdsver	8.4.3.1	Processing system revision	ontime	9858.9077600241	Sum of GTIs [s]
caldsver	4.4.9	 	ontime2	9858.9488000274	Sum of GTIs [s]
date	2012-04-09T16:03:25	Date and time of file creation	ontime3	9858.7846400142	Sum of GTIs [s]
revision	2	Processing version of data	ontime5	9858.8667200208	Sum of GTIs [s]
			ontime6	9858.8256800175	Sum of GTIs [s]
			ontime7	9858.9077600241	Sum of GTIs [s]
			ontime8	9858.7436000109	Sum of GTIs [s]
			l1events	659448	Number of level 1 events

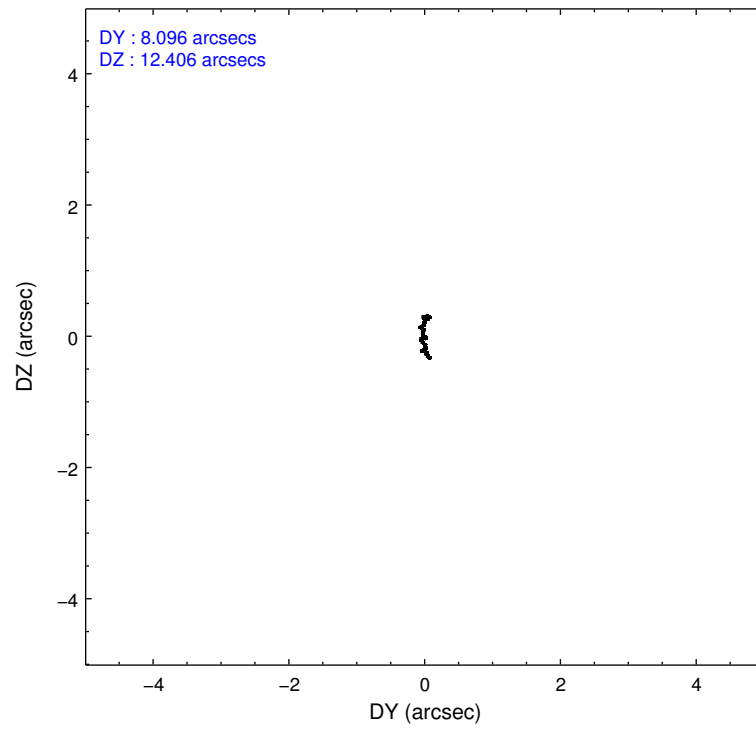
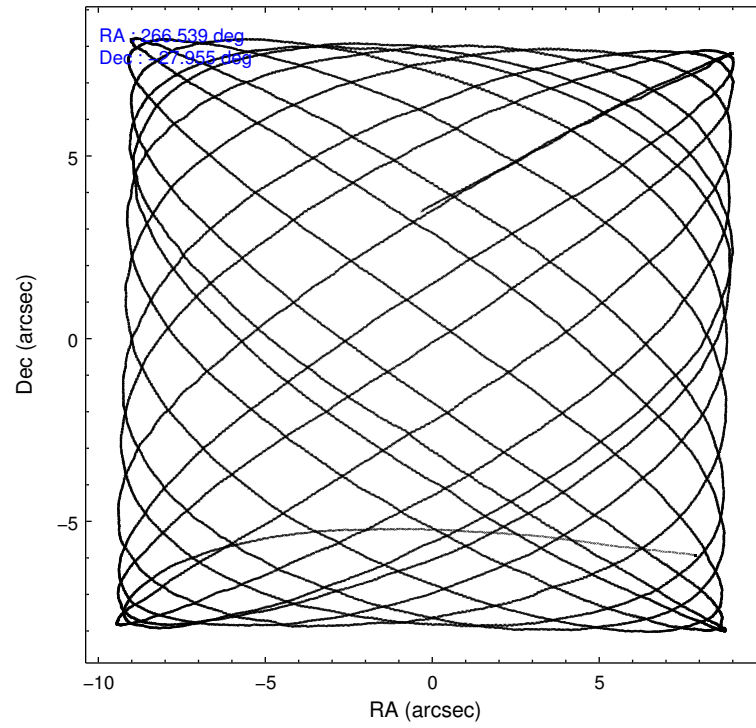
2.1.4 Events

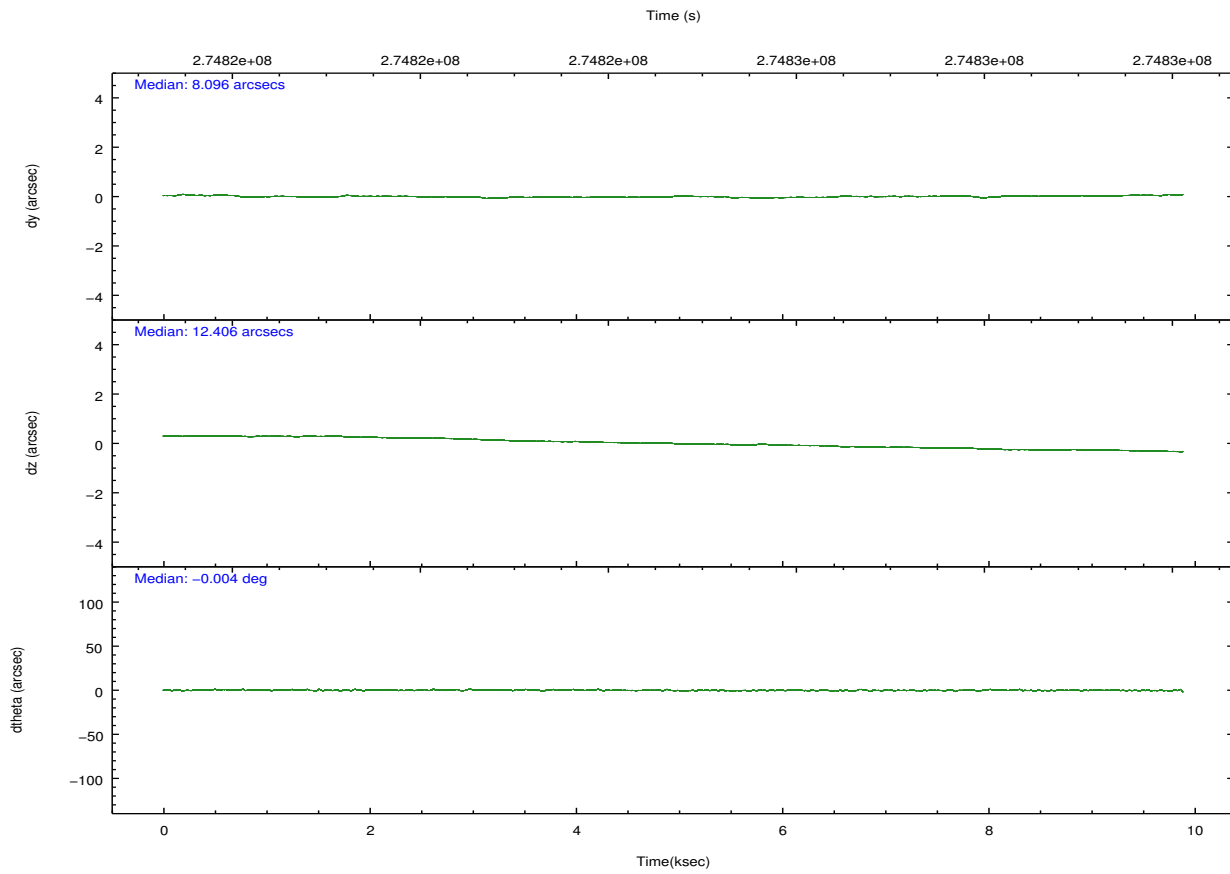
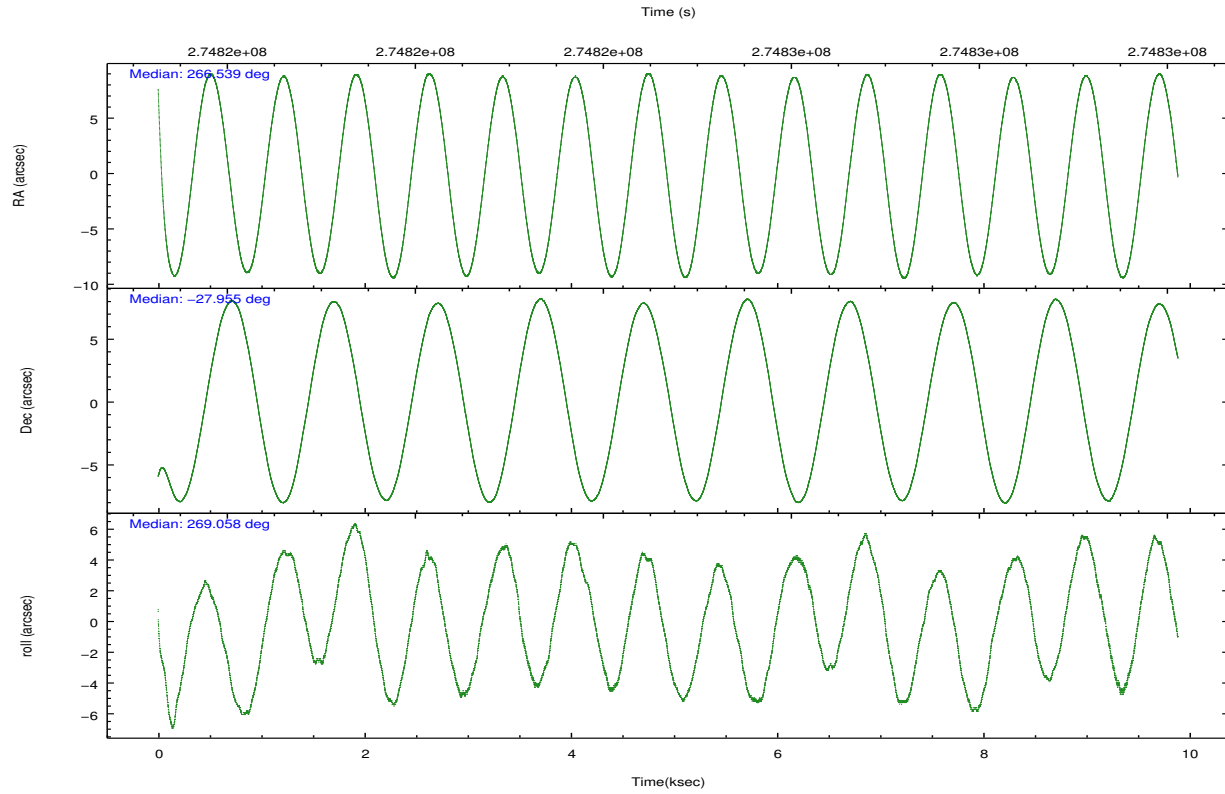
	ccd 2	ccd 3	ccd 5	ccd 6	ccd 7	ccd 8		ccd 2	ccd 3	ccd 5	ccd 6	ccd 7	ccd 8
level 1 events	94120	89662	142516	93496	123273	116381	grade 0 events	5452	5153	10292	5101	4600	8428
rejected events	82491	78313	74113	81567	70914	89242		5%	5%	7%	5%	3%	7%
rejected %	87%	87%	52%	87%	57%	76%	grade 1 events	75	60	307	47	111	90
								0%	0%	0%	0%	0%	0%
							grade 2 events	2332	2191	19267	2467	10744	6101
								2%	2%	13%	2%	8%	5%
							grade 3 events	991	1089	2619	1065	4719	2730
								1%	1%	1%	1%	3%	2%
							grade 4 events	1003	1015	2503	1017	4585	2563
								1%	1%	1%	1%	3%	2%
							grade 5 events	3501	4062	9898	4238	11627	5620
								3%	4%	6%	4%	9%	4%
							grade 6 events	1855	1902	33743	2282	27740	7325
								1%	2%	23%	2%	22%	6%
							grade 7 events	78911	74190	63887	77279	59147	83524
								83%	82%	44%	82%	47%	71%

2.2 Compared Parameters

Parameter	Planned	Actual	Parameter	Planned	Actual
Instrument	ACIS	ACIS	Obspar format version number	7	7
Detector	ACIS-235678	ACIS-235678	Obspar file type	PREDICTED	ACTUAL
Grating	NONE	NONE	Obspar update status	NONE	UPDATED
Data mode	FAINT	FAINT	Number of optional ACIS chips dropped	0	0
Observation mode	POINTING	POINTING	On-chip summing requested	N	N
[deg] Pointing RA	266.523577	266.5389369801097	Subarray requested	NONE	NONE
[deg] Pointing Dec	-27.931490	-27.95512038122228	Alternating exposures requested	N	N
[deg] Pointing Roll	268.900541	269.0643596359491	[s] Primary exposure time	0.000000	3.2
[mm] SIM focus pos	-0.684267	-0.6828225247311905			
[mm] SIM defocus	0	0.001444936568705701			
[mm] SIM translation stage pos	-190.132523	-190.1425803651734			
[mm] SIM translation stage offset	0	0.01005778216563158			
[s] Observation start time (MET)	274819918.184000	274818858.75934			
Observation start date	2006-09-16T18:50:53	2006-09-16T18:34:18			
[s] Observation end time (MET)	274829625.184000	274829847.78485			
Observation end date	2006-09-16T21:32:40	2006-09-16T21:37:27			
Read mode	TIMED	TIMED			

2.3 Aspect



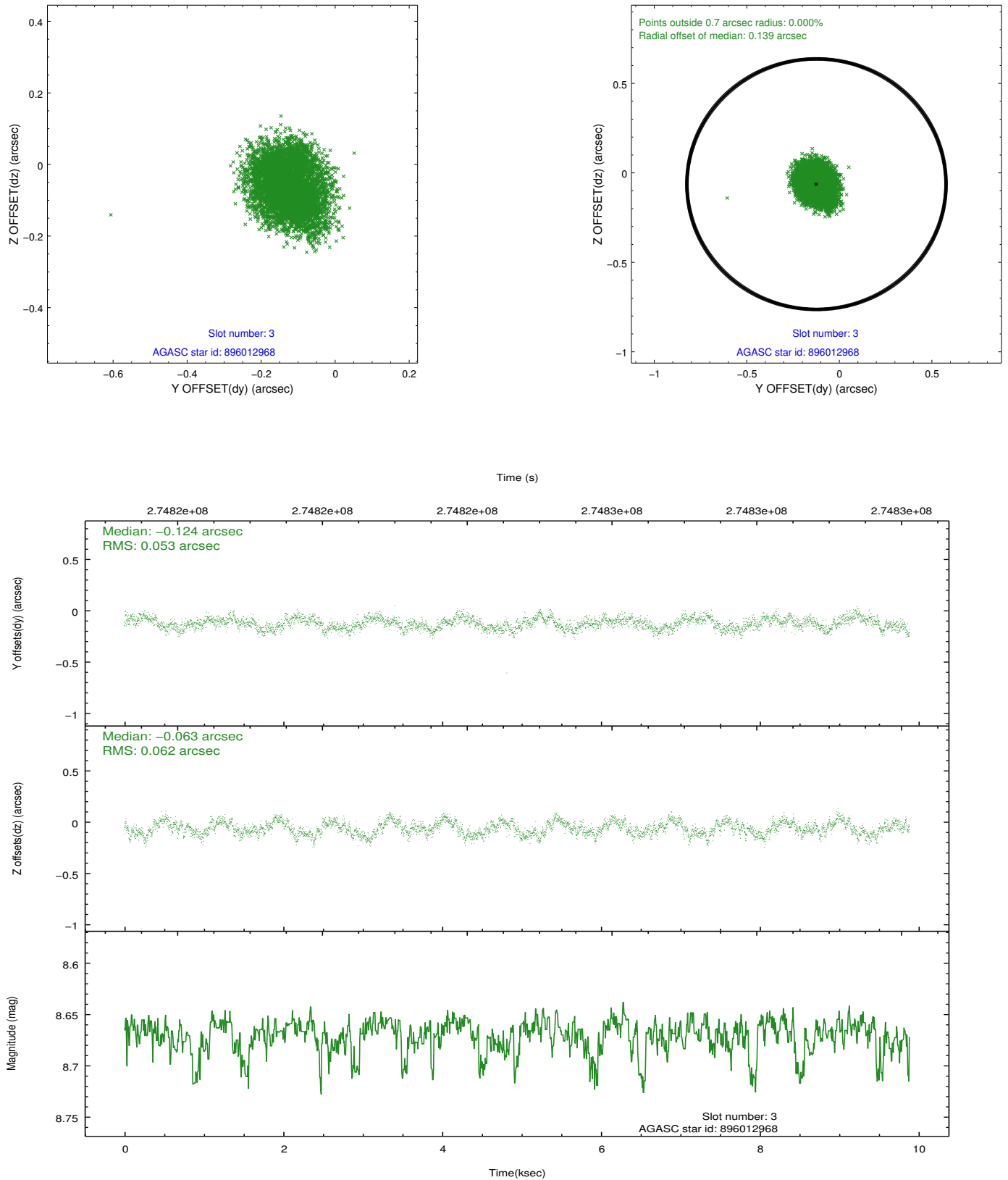


Slot Statistics

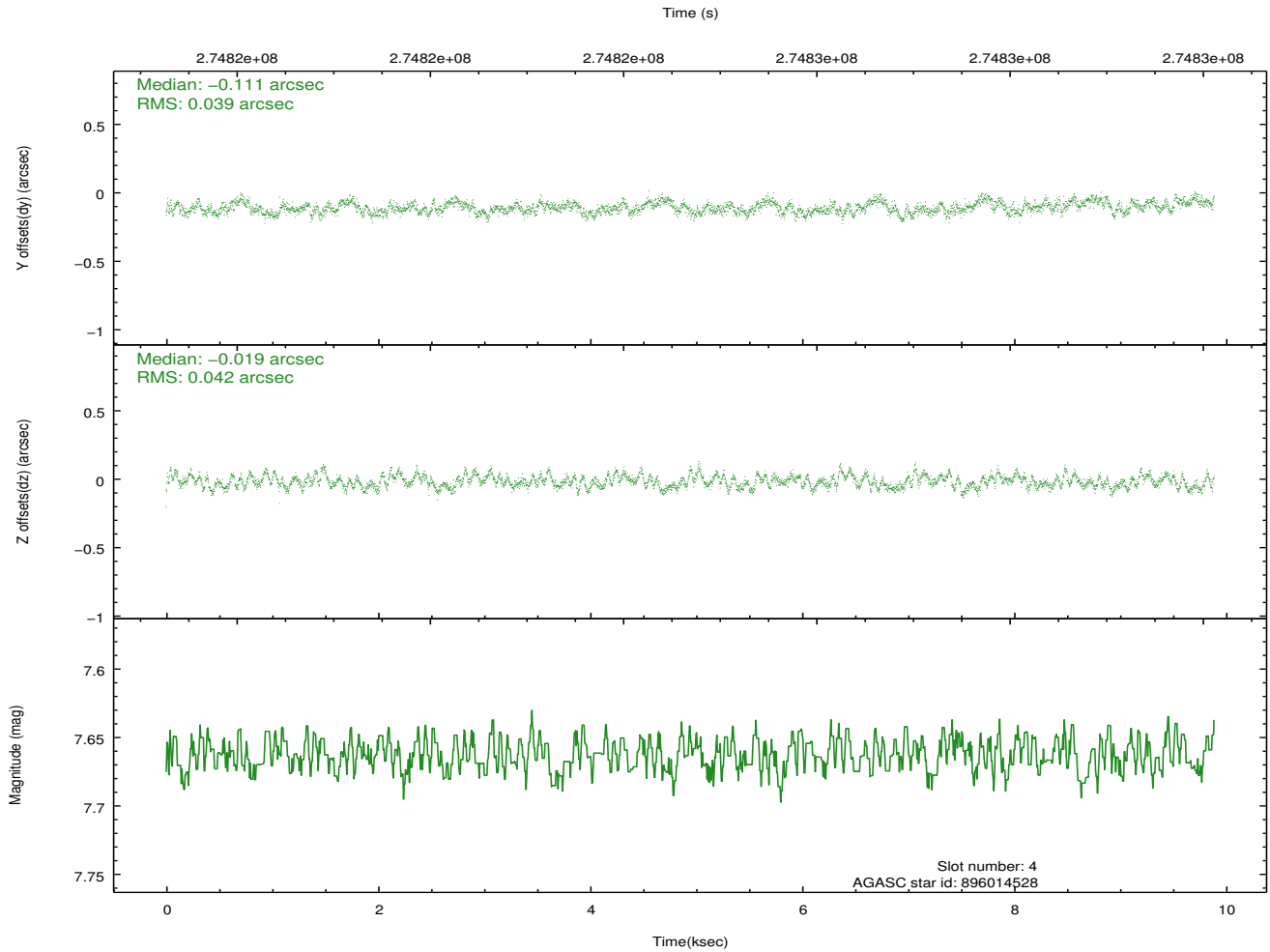
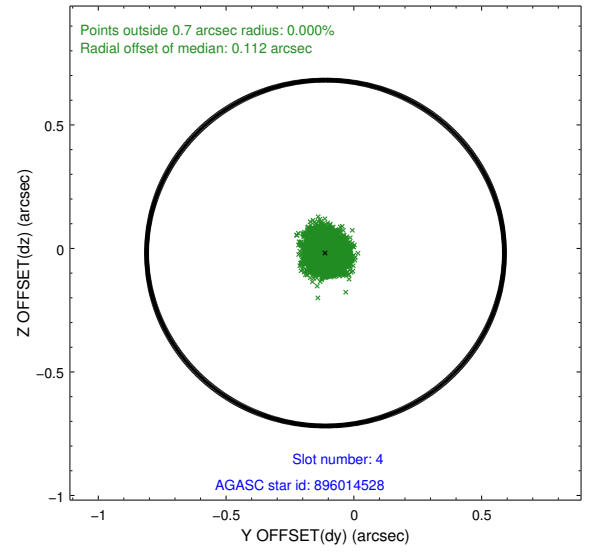
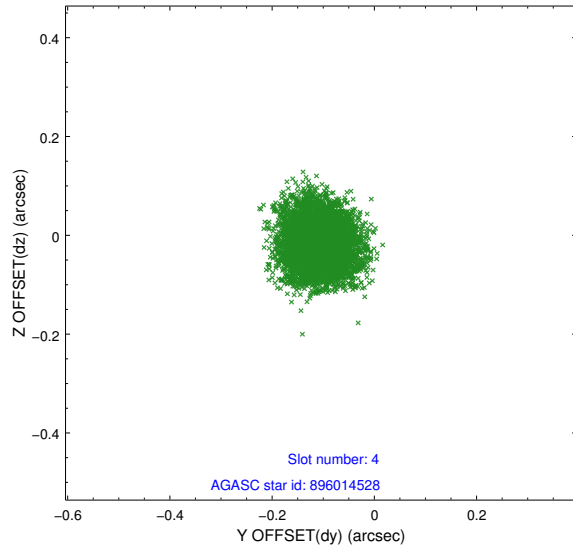
slot	status	id	mag	n_pts	med_dy	med_dz	dr1	dr2	ra	dec	mean_y	mean_z
0	FID	ACIS-S-2	7.10	2413	-0.055	-0.038	0.008	0.024	0.000000	0.000000	-760.93	-1733.71
1	FID	ACIS-S-4	7.20	2412	0.075	0.014	0.008	0.018	0.000000	0.000000	2152.23	174.27
2	FID	ACIS-S-6	7.35	2412	-0.048	0.030	0.008	0.015	0.000000	0.000000	401.75	812.29
3	GUIDE	896012968	8.67	4822	-0.124	-0.063	0.089	0.135	266.634547	-27.600471	-1197.91	331.02
4	GUIDE	896014528	7.66	4820	-0.111	-0.019	0.062	0.097	266.628858	-27.438607	-1780.42	302.24
5	GUIDE	896538696	6.83	4820	0.000	0.029	0.045	0.072	266.298470	-28.325572	1432.82	-685.66
6	GUIDE	896538840	8.92	4820	0.224	-0.015	0.065	0.107	266.920426	-28.466925	1906.51	1293.07
7	GUIDE	896402656	8.85	4822	0.010	0.064	0.070	0.113	265.739192	-28.230753	1133.94	-2466.08

2.4 Star Slots

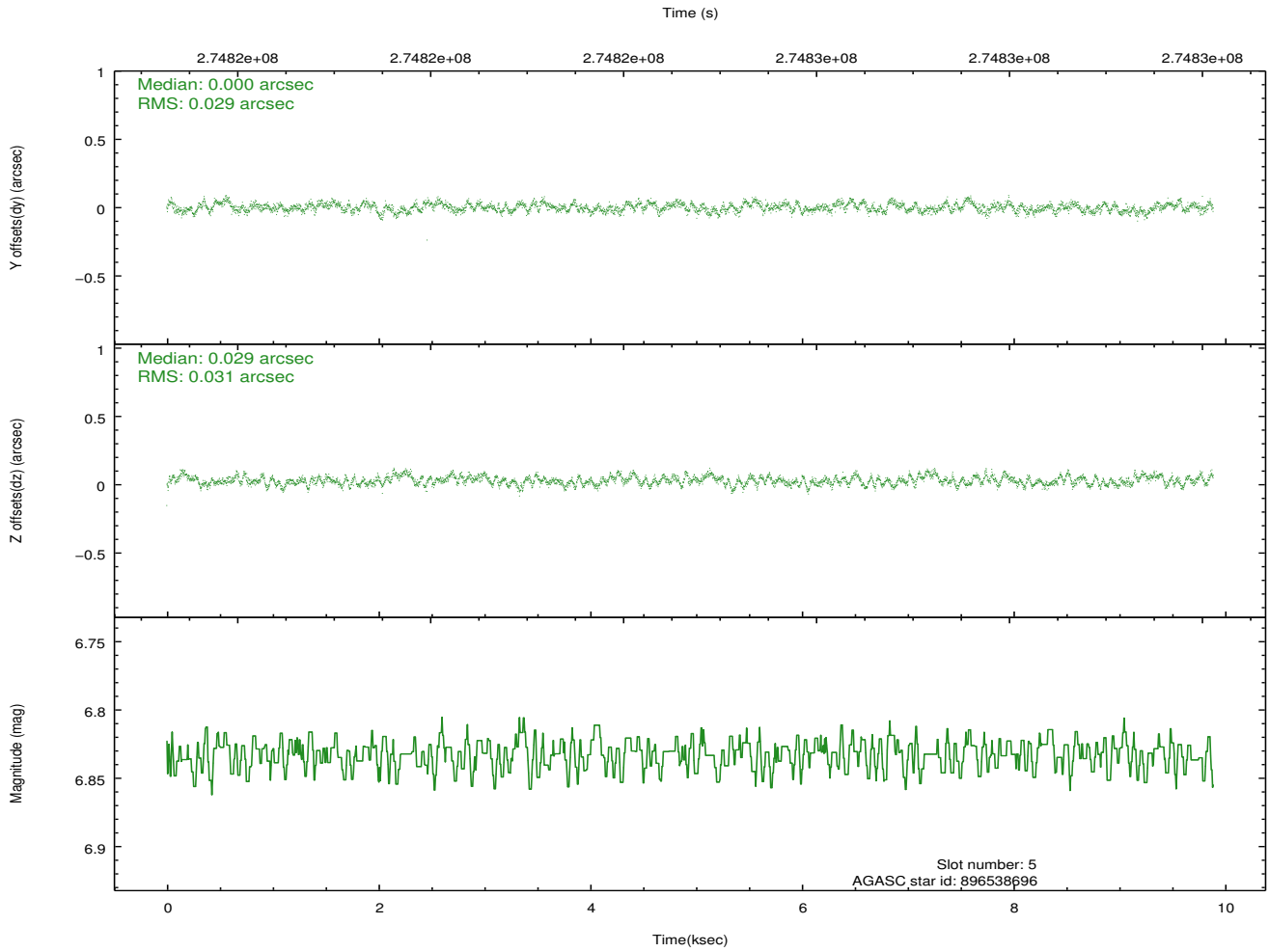
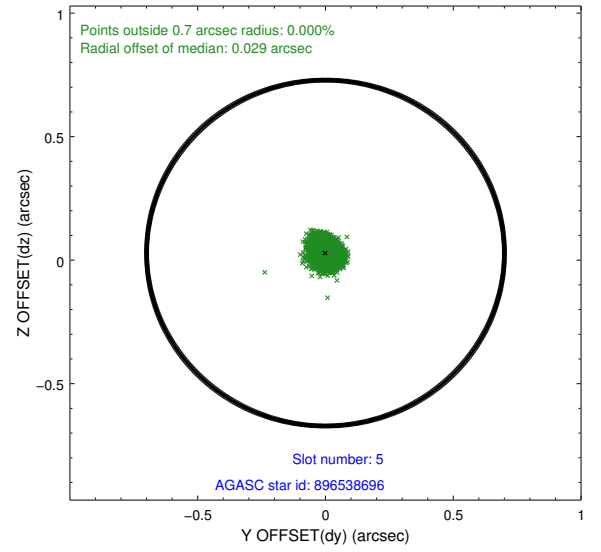
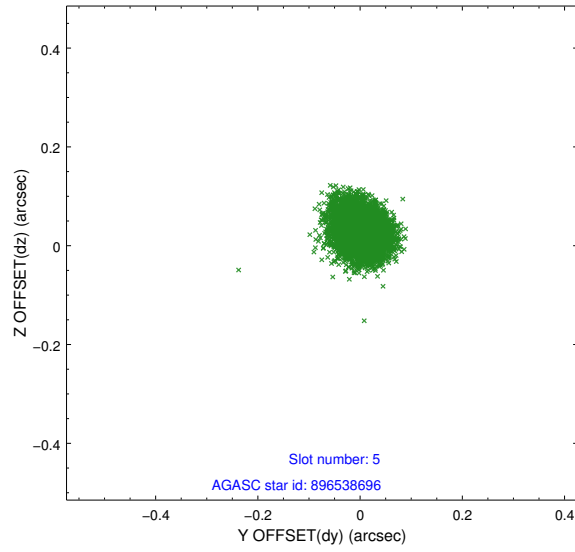
2.4.1 Slot 3



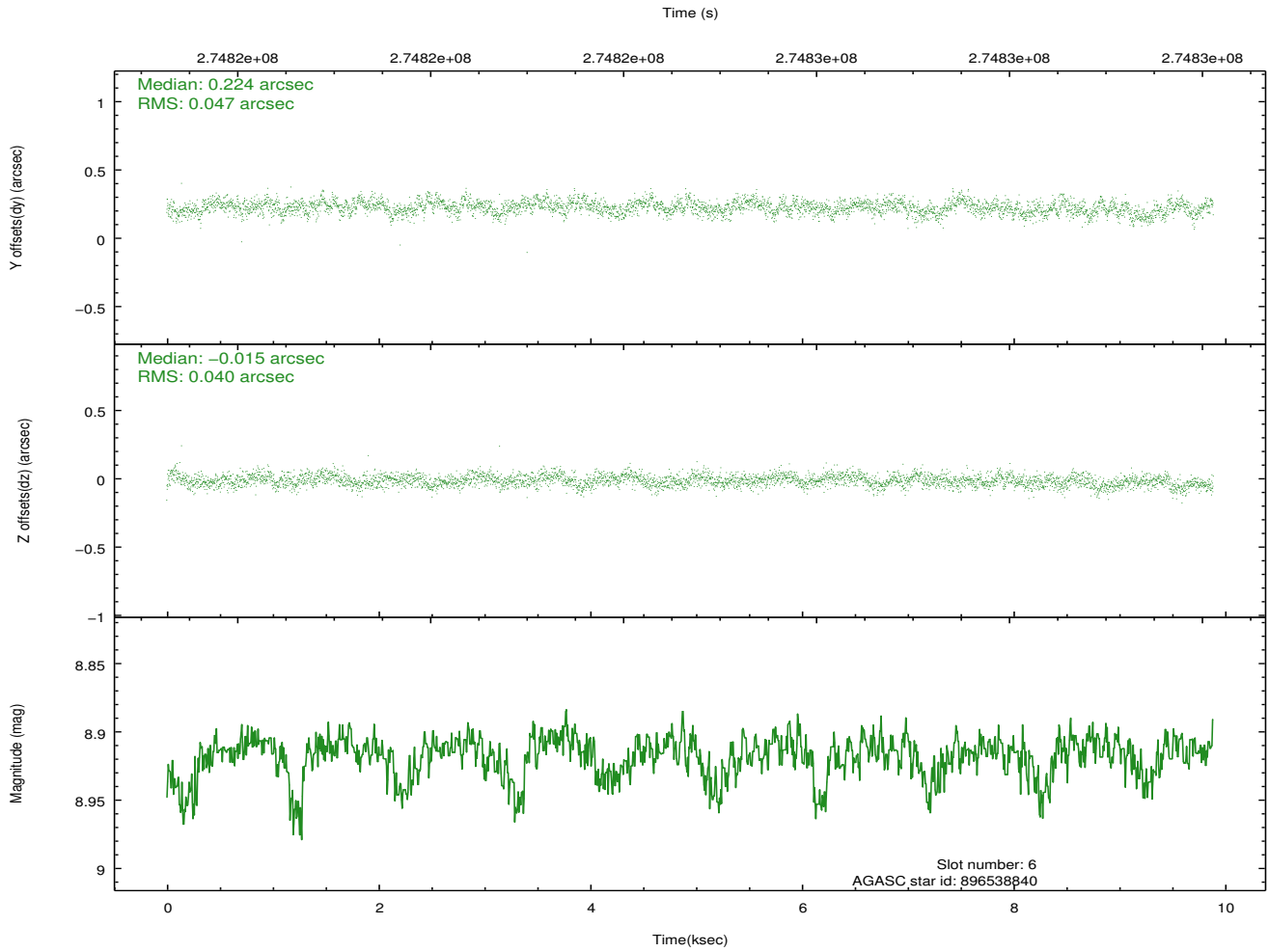
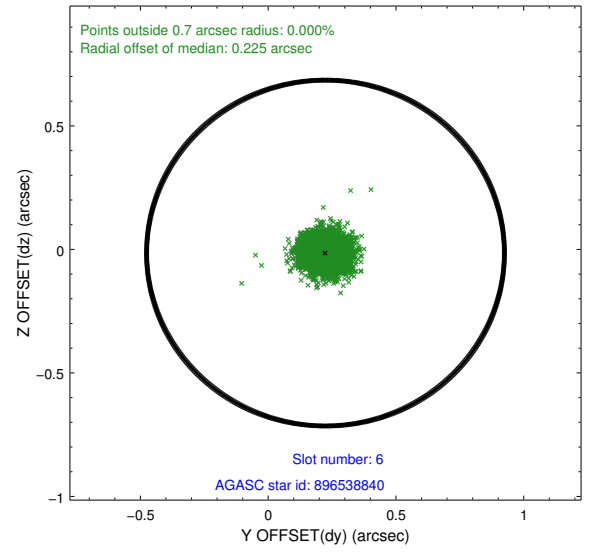
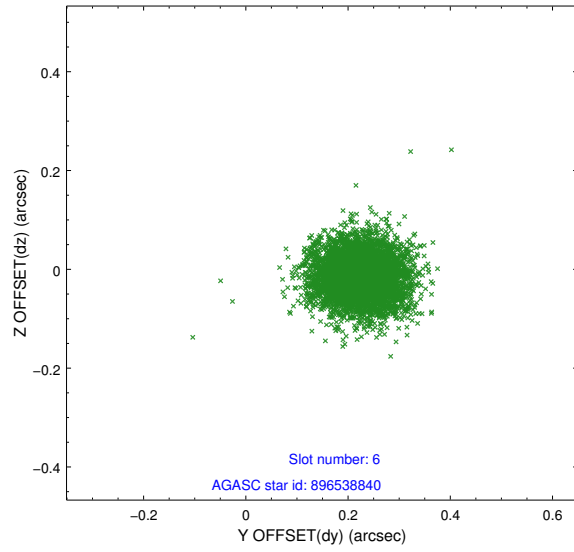
2.4.2 Slot 4



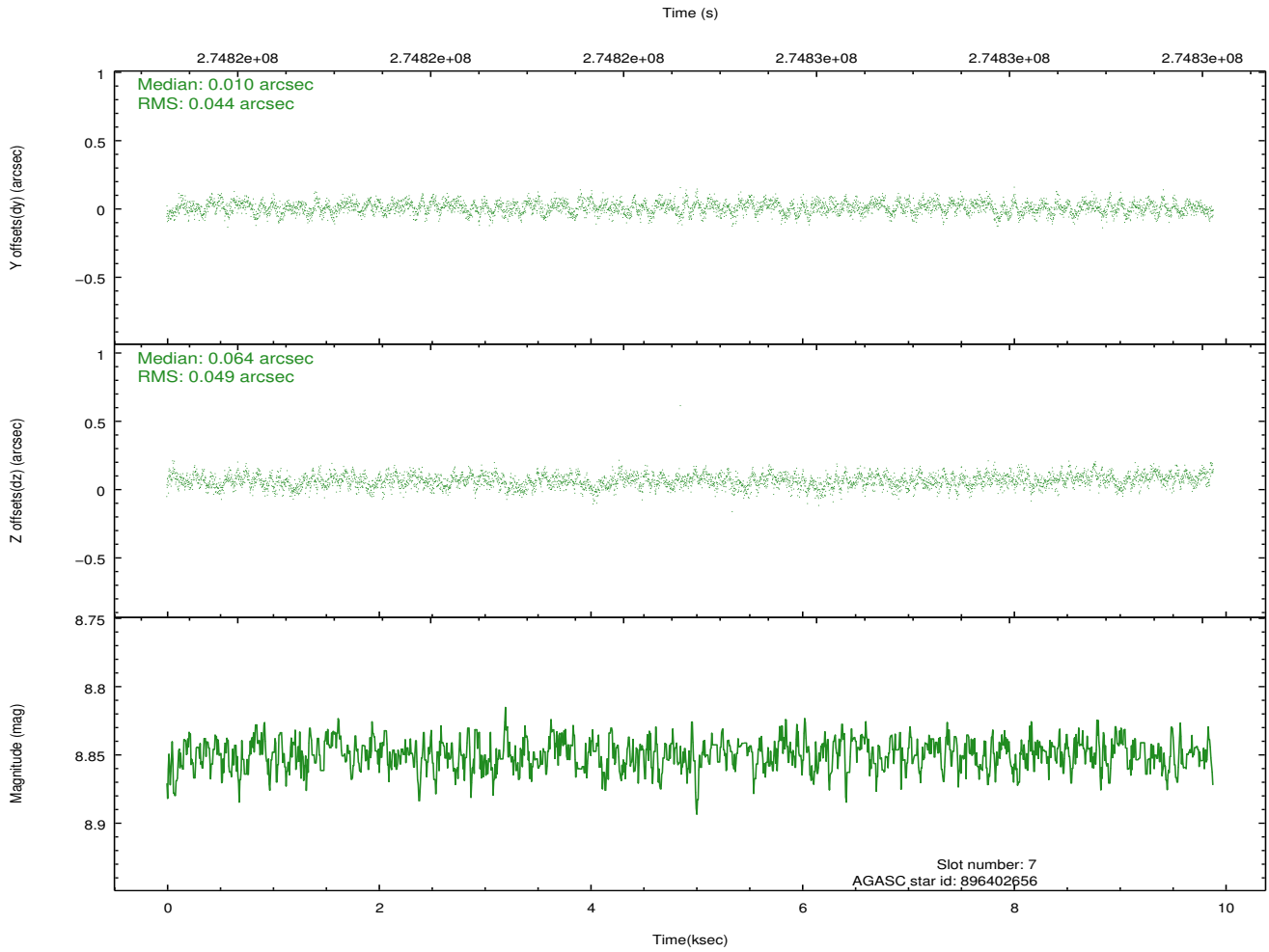
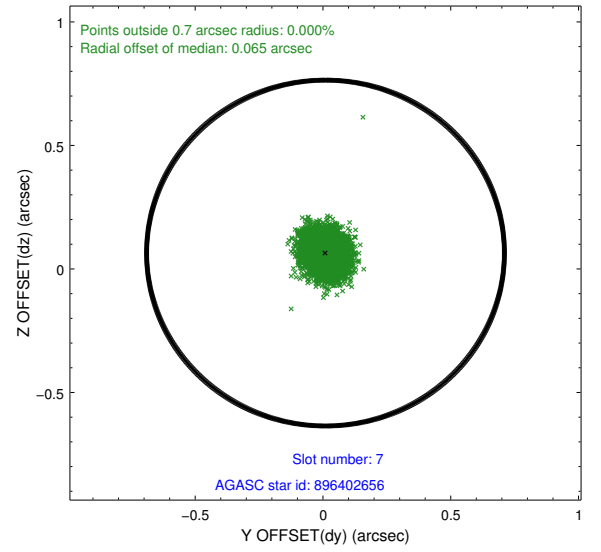
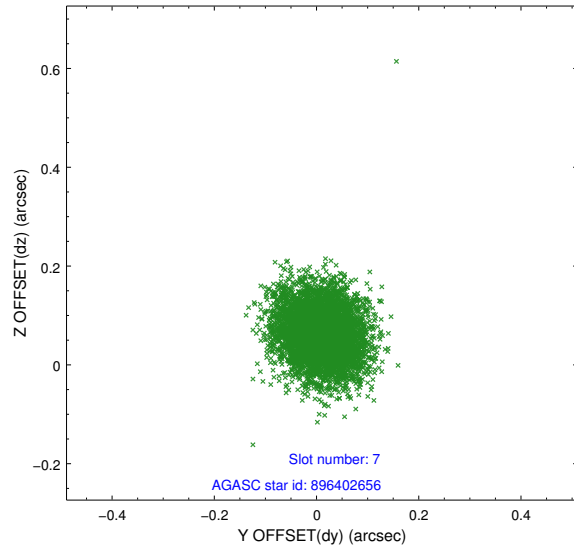
2.4.3 Slot 5



2.4.4 Slot 6

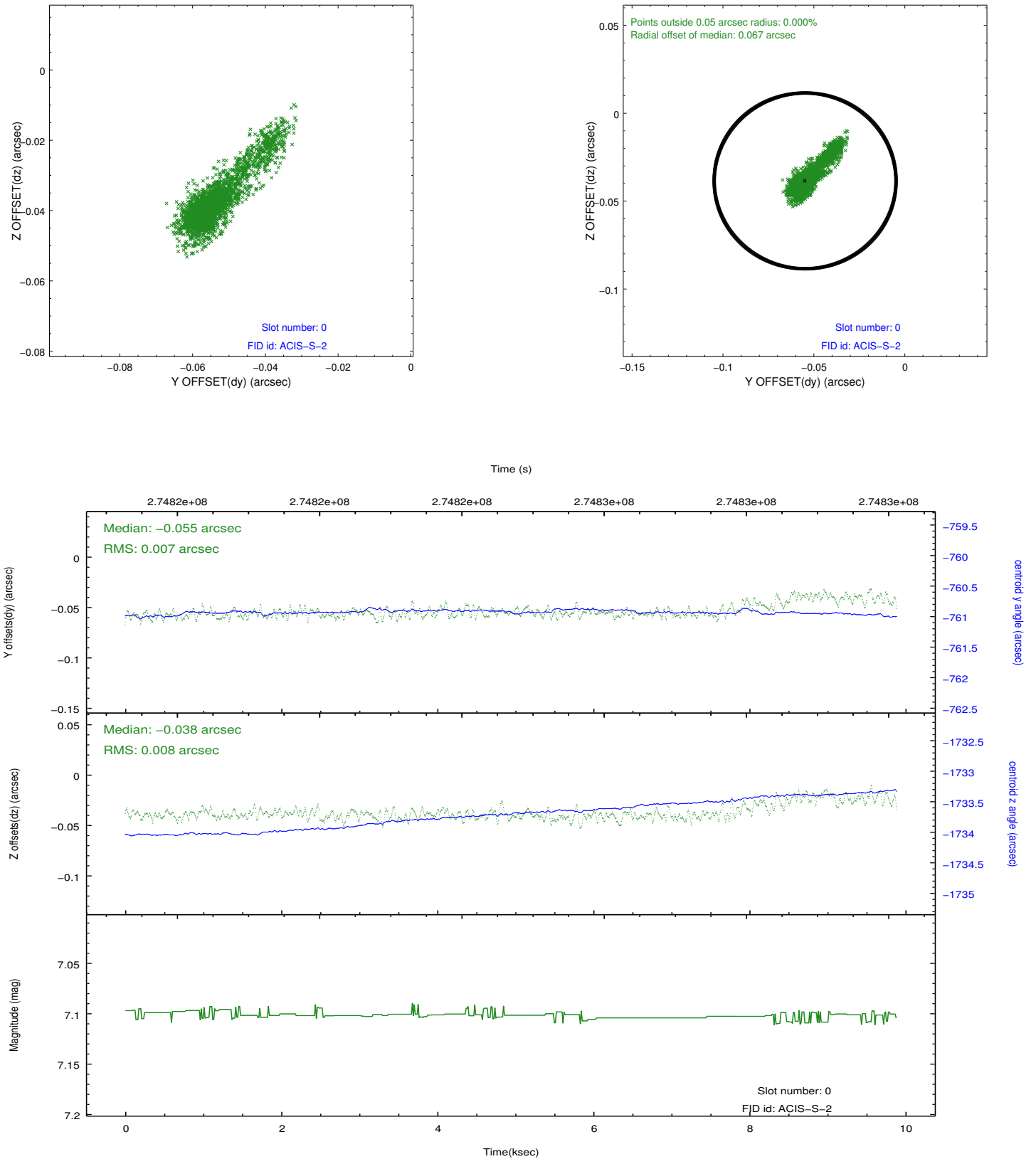


2.4.5 Slot 7

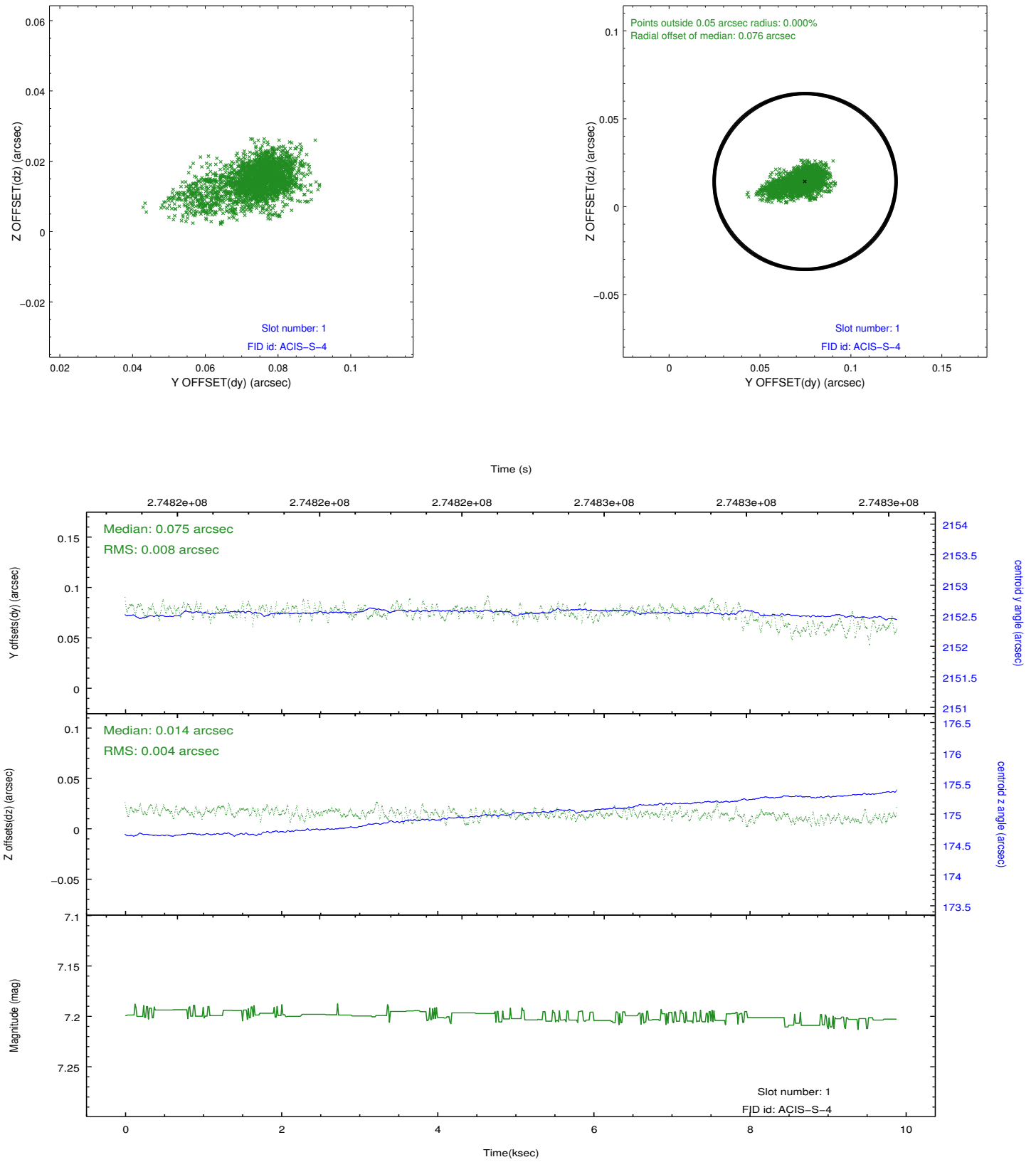


2.5 FID Slots

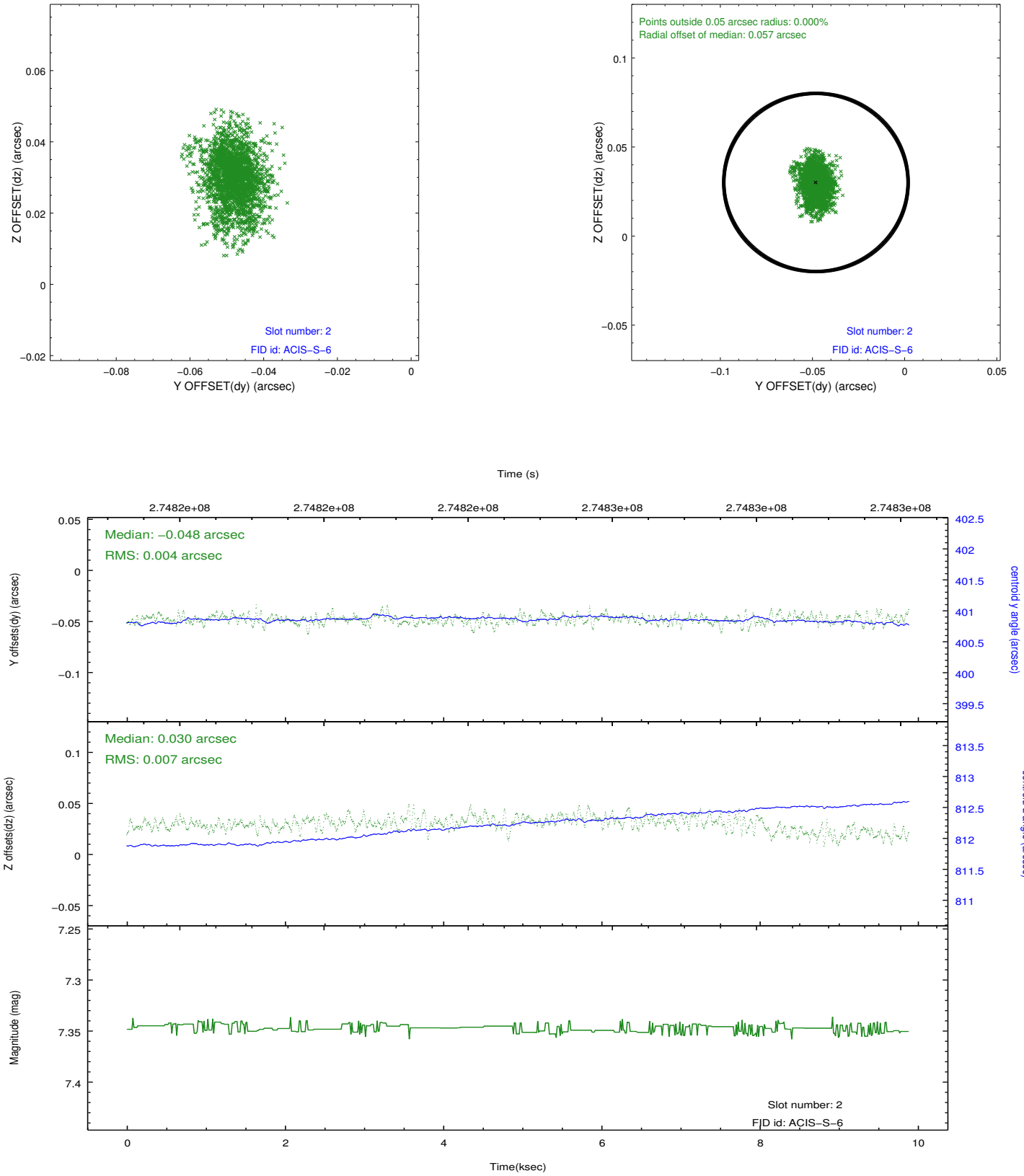
2.5.1 Slot 0



2.5.2 Slot 1



2.5.3 Slot 2



A Summary

A.1 Status

V&V Scientist	Jen Lauer
V&V Date (YYYY-MM-DD)	2012.04.09
V&V Edition	1
V&V Disposition and Status	OK
V&V Charge Time	9.85919996

A.2 Comments