

V&V Reference Report

L2 ASCDS Version : 8.4.3

Observation 6571 - L2 Version 3
Chandra X-Ray Center

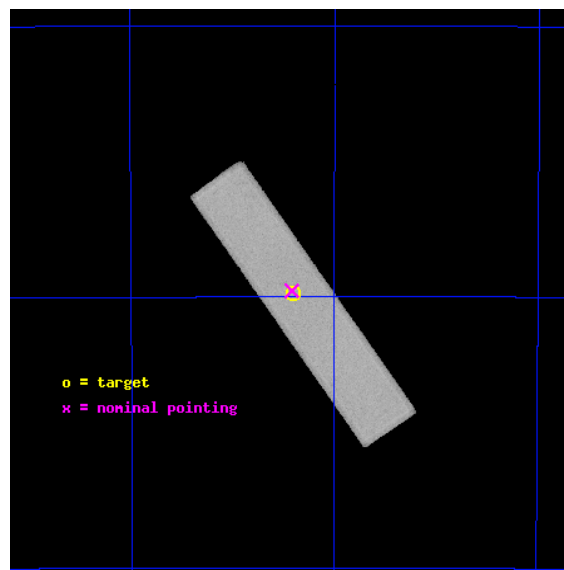
L2 Processing Date : Aug 11 2012

Contents

| | | |
|----------|-------------------------------|-----------|
| 1 | Front | 2 |
| 2 | OBI | 3 |
| 2.1 | OBI | 3 |
| 2.1.1 | Images | 3 |
| 2.1.2 | Parameters | 4 |
| 2.1.3 | Events | 4 |
| 2.2 | Compared Parameters | 5 |
| 2.3 | Aspect | 6 |
| 2.4 | Star Slots | 9 |
| 2.4.1 | Slot 3 | 9 |
| 2.4.2 | Slot 4 | 10 |
| 2.4.3 | Slot 5 | 11 |
| 2.4.4 | Slot 6 | 12 |
| 2.4.5 | Slot 7 | 13 |
| 2.5 | FID Slots | 14 |
| 2.5.1 | Slot 0 | 14 |
| 2.5.2 | Slot 1 | 15 |
| 2.5.3 | Slot 2 | 16 |
| A | Summary | 17 |
| A.1 | Status | 17 |
| A.2 | Comments | 17 |

1 Front

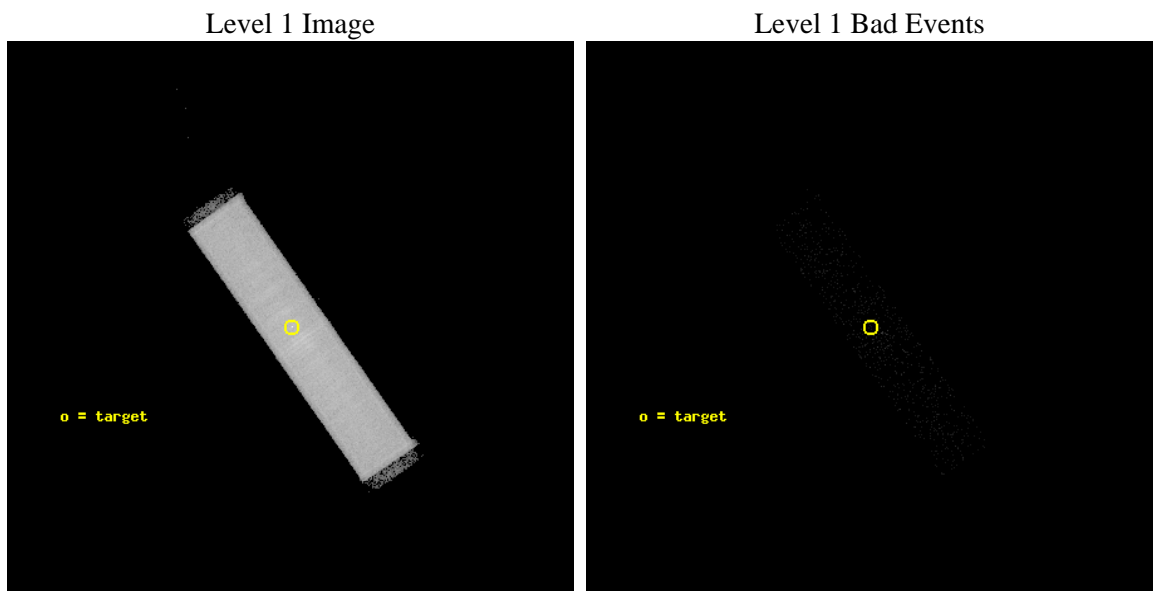
| | | |
|----------|--------------------------------------|---------------------------------------|
| seq_num | 400476 | Sequence number |
| obs_id | 6571 | Observation id |
| title | The low-L LMXB 1RXS J171824.2-402934 | Proposal title |
| observer | Prof Mariano Mendez | Principal investigator |
| object | 1RXS J171824.2-402934 | Source name |
| ra_targ | 259.6006 | Observer's specified target RA [deg] |
| dec_targ | -40.492511 | Observer's specified target Dec [deg] |
| ra_nom | 259.60424674909 | Nominal RA [deg] |
| dec_nom | -40.489037047363 | Nominal Dec [deg] |
| roll_nom | 54.766361222756 | Nominal Roll [deg] |
| revision | 3 | Processing version of data |
| ontime | 5181.6314917207 | [s] |
| livetime | 5156.8196809525 | Ontime multiplied by DTCOR |
| l2events | 260124 | Number of level 2 events |



2 OBI

2.1 OBI

2.1.1 Images



2.1.2 Parameters

| | | | | | |
|----------|---------------------|--------------------------------|----------------|-----------------|---|
| obi_num | 0 | Obi number | sched_exp_time | 5000.000000 | [s] Scheduled observation exposure time |
| ascdsver | 8.4.5 | Processing system revision | ontime | 5181.6314917207 | [s] |
| caldbver | 4.5.1.1 | | l1events | 373898 | Number of level 1 events |
| date | 2012-08-11T07:15:03 | Date and time of file creation | | | |
| revision | 3 | Processing version of data | | | |

2.1.3 Events

Level 1 Events

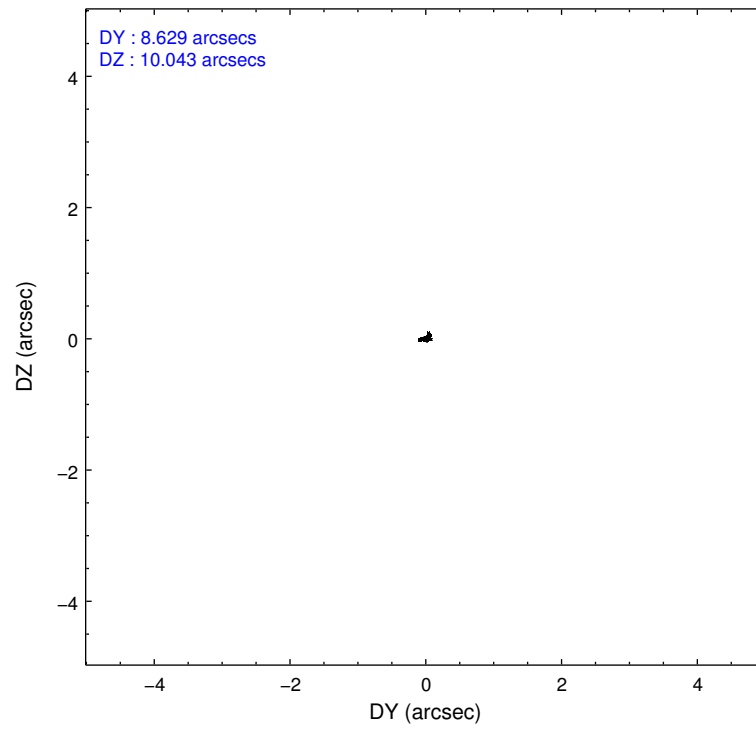
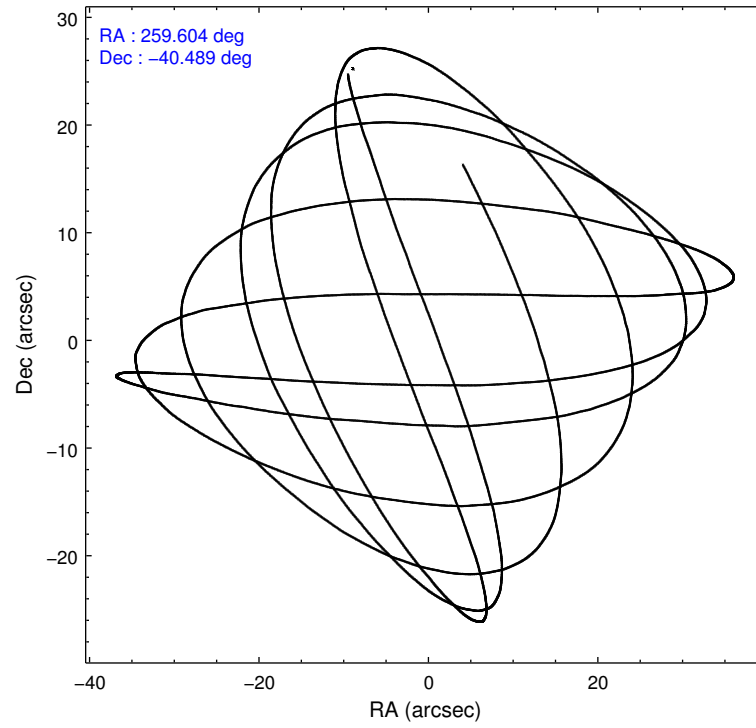
| | segment 1 | segment 2 | segment 3 |
|-----------------|----------------------|----------------------|----------------------|
| level 1 events | 434 | 373456 | 8 |
| rejected events | 16 | 11658 | 7 |
| rejected % | 3% | 3% | 87% |

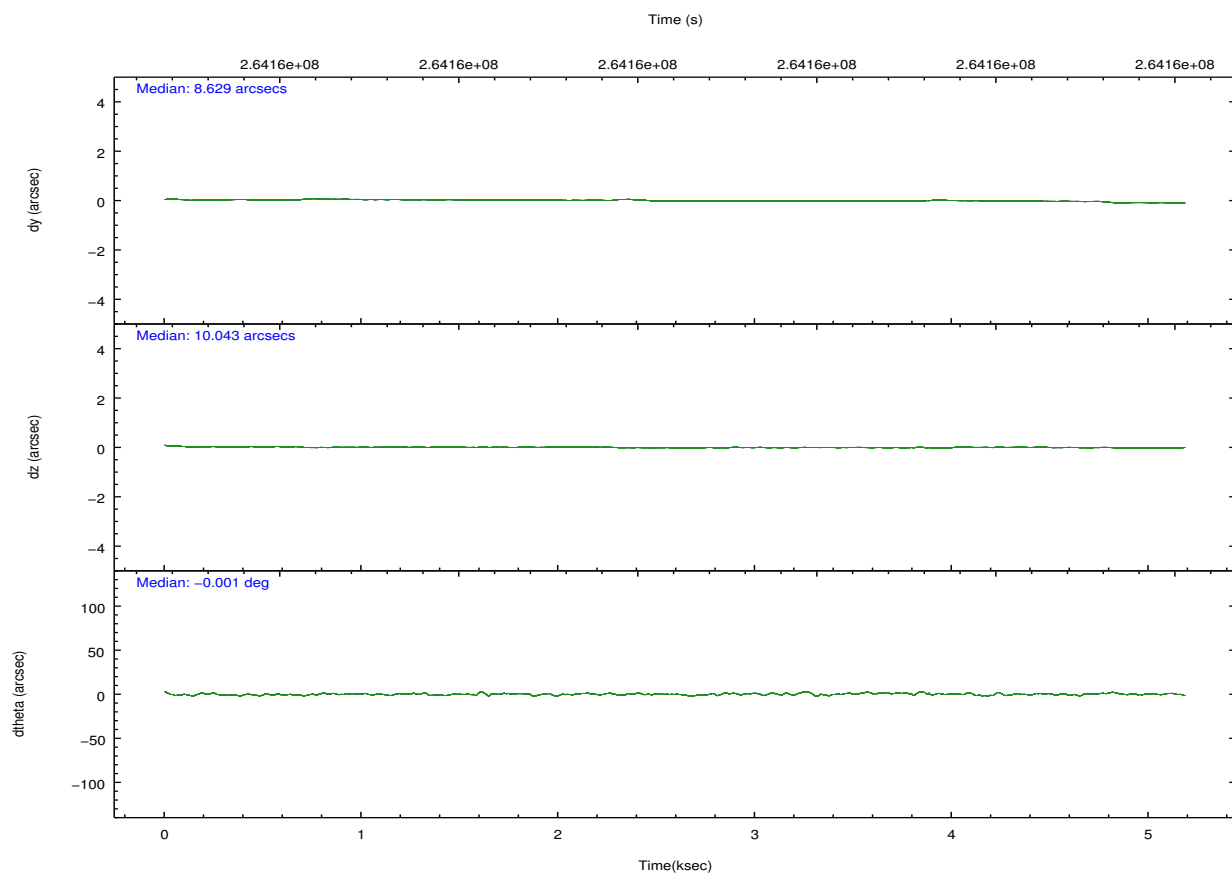
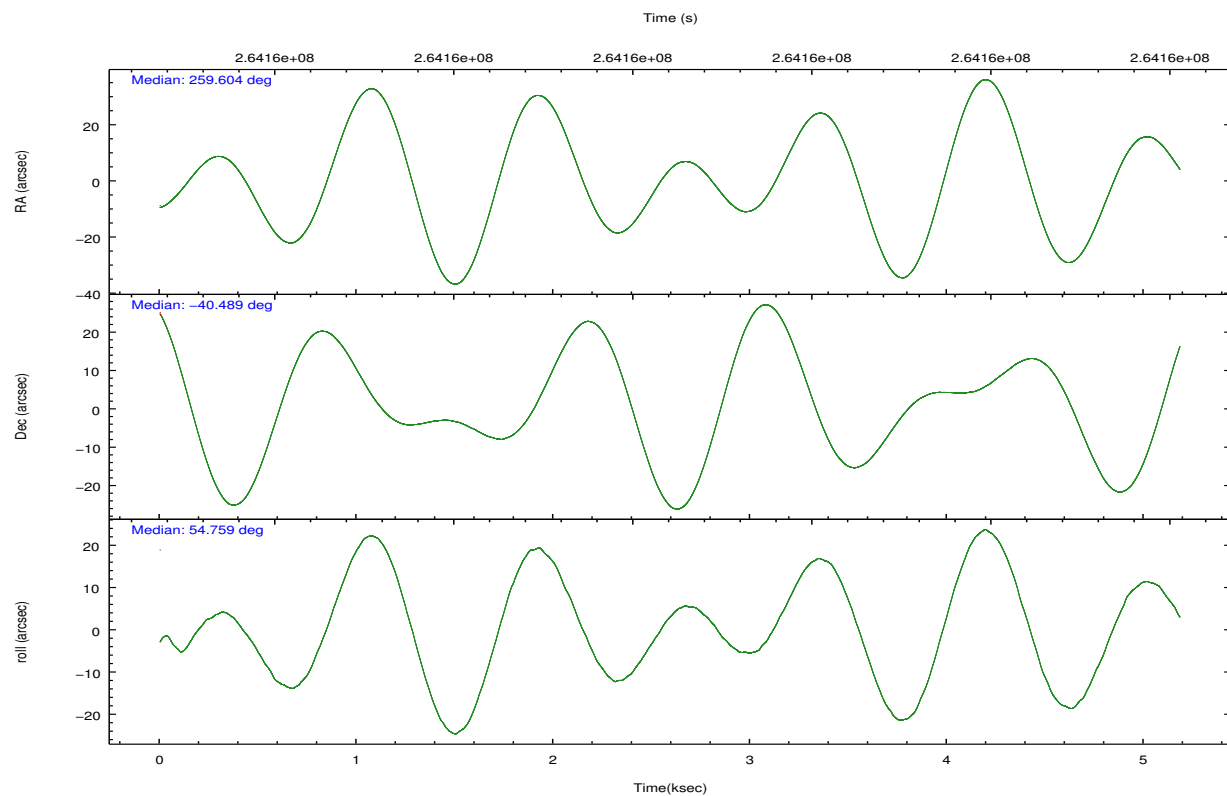
2.2 Compared Parameters

| Parameter | Planned | Actual |
|-----------------------------------|-----------------------|----------------------|
| Instrument | HRC | HRC |
| Detector | HRC-S | HRC-S |
| Grating | NONE | NONE |
| Data mode | OBSERVING | OBSERVING |
| Observation mode | POINTING | POINTING |
| [deg] Pointing RA | 259.602720 | 259.6042467490943 |
| [deg] Pointing Dec | -40.517343 | -40.4890370473633 |
| [deg] Pointing Roll | 54.698026 | 54.7663612227559 |
| [mm] SIM focus pos | -1.533336 | -1.526339935833849 |
| [mm] SIM defocus | 7.710433287538843e-07 | 0.006996703570447904 |
| [mm] SIM translation stage pos | 250.455976 | 250.466033080201 |
| [mm] SIM translation stage offset | 0 | -0.01005468664627074 |
| [s] Observation start time (MET) | 264159805.184000 | 264159356.40992 |
| Observation start date | 2006-05-16T09:42:20 | 2006-05-16T09:35:56 |
| [s] Observation end time (MET) | 264164805.184000 | 264165774.96022 |
| Observation end date | 2006-05-16T11:05:40 | 2006-05-16T11:22:54 |

| Parameter | Planned | Actual |
|------------------------------|-----------|---------|
| Obspar format version number | 7 | 7 |
| Obspar file type | PREDICTED | ACTUAL |
| Obspar update status | NONE | UPDATED |

2.3 Aspect



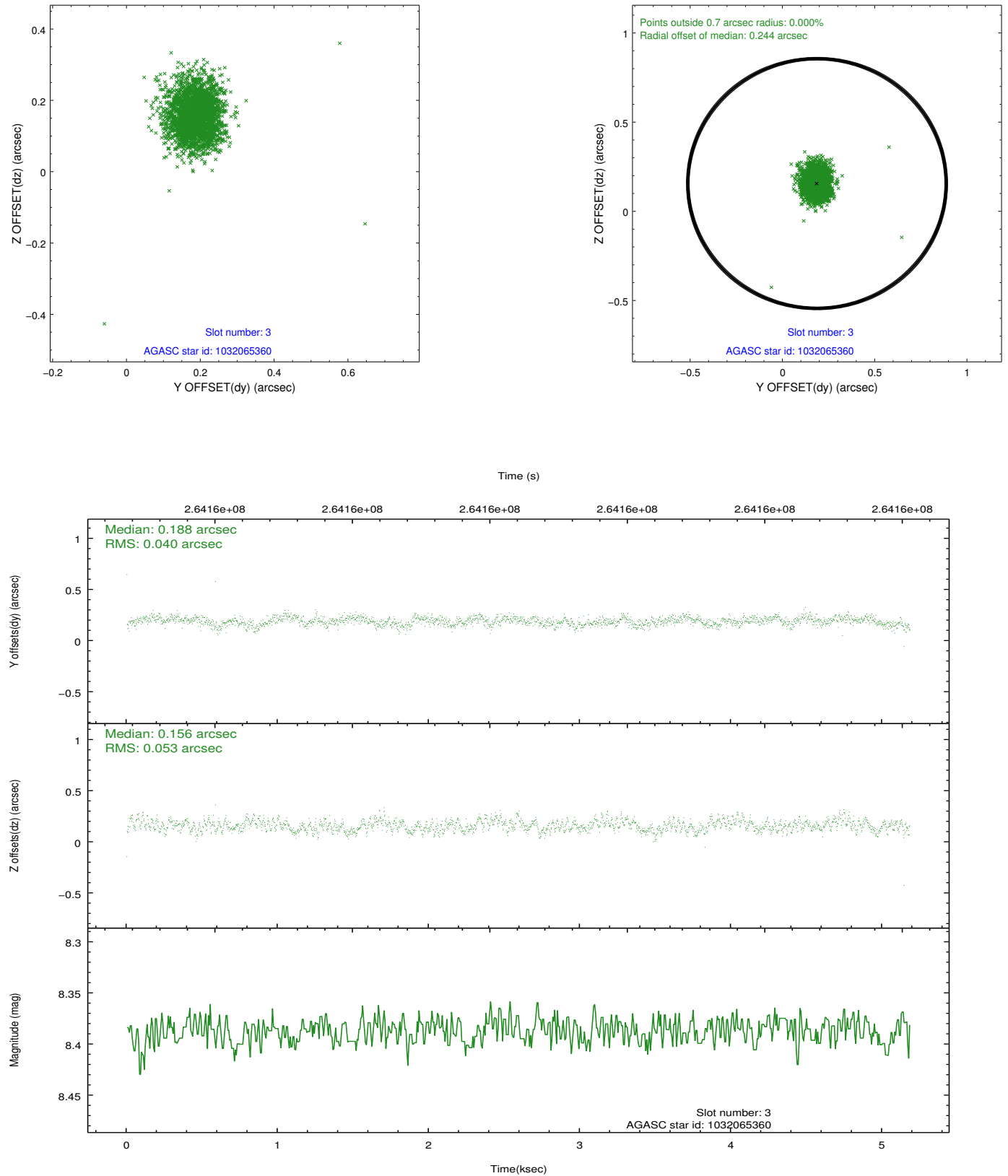


Slot Statistics

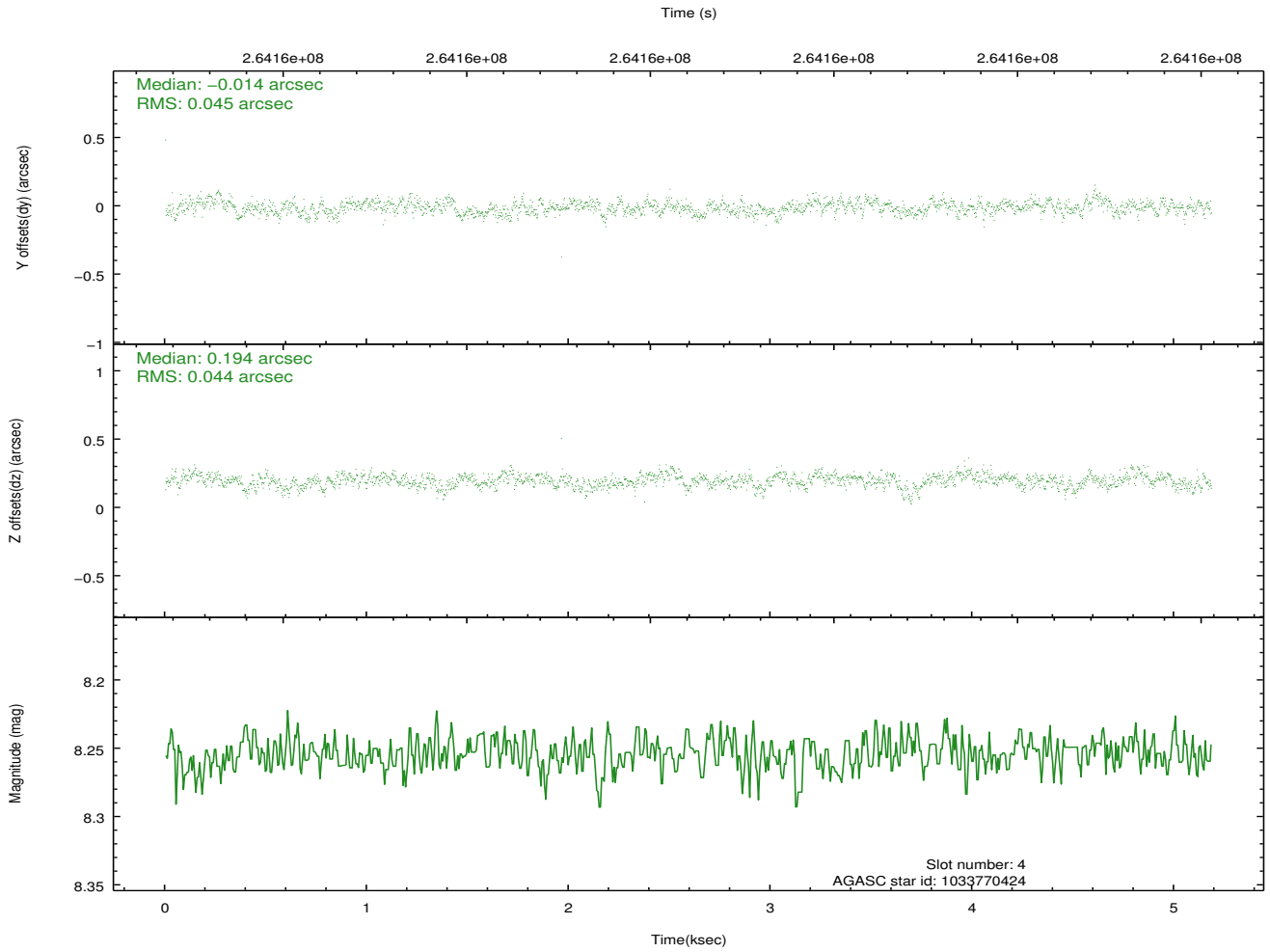
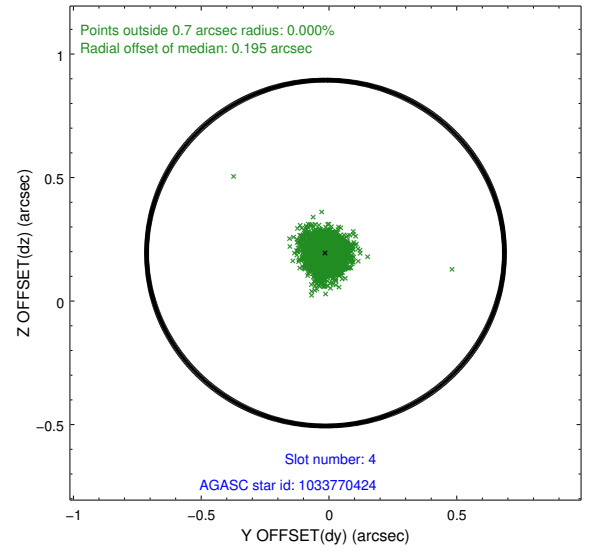
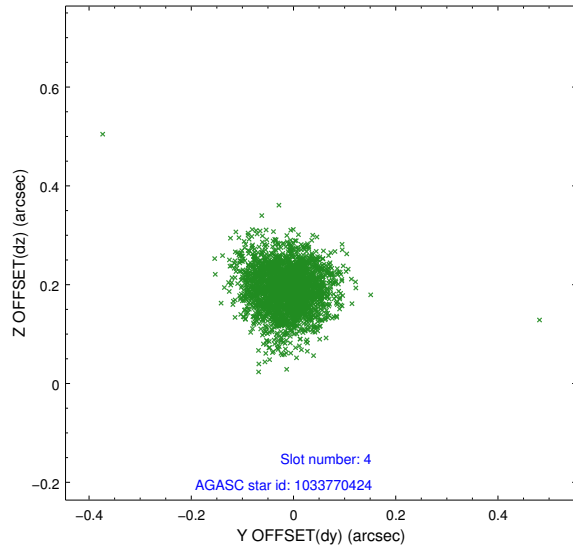
| slot | status | id | mag | n_pts | med_dy | med_dz | dr1 | dr2 | ra | dec | mean_y | mean_z |
|------|--------|------------|------|-------|--------|--------|-------|-------|------------|------------|----------|----------|
| 0 | FID | HRC-S-2 | 6.99 | 1265 | 0.146 | -0.137 | 0.010 | 0.018 | 0.000000 | 0.000000 | 1236.84 | -451.40 |
| 1 | FID | HRC-S-3 | 7.01 | 1264 | 0.045 | -0.094 | 0.006 | 0.011 | 0.000000 | 0.000000 | -1164.61 | 570.55 |
| 2 | FID | HRC-S-4 | 6.96 | 1264 | 0.215 | -0.064 | 0.010 | 0.019 | 0.000000 | 0.000000 | 1234.61 | 573.84 |
| 3 | GUIDE | 1032065360 | 8.39 | 2523 | 0.188 | 0.156 | 0.068 | 0.112 | 259.684100 | -41.099417 | -1581.10 | -1390.52 |
| 4 | GUIDE | 1033770424 | 8.25 | 2528 | -0.014 | 0.194 | 0.066 | 0.108 | 260.243465 | -40.286835 | 1689.53 | -959.61 |
| 5 | GUIDE | 1033775792 | 7.38 | 2529 | -0.352 | -0.138 | 0.054 | 0.086 | 260.192320 | -40.388299 | 1310.62 | -1053.71 |
| 6 | GUIDE | 1032062224 | 8.11 | 2529 | 0.052 | -0.358 | 0.063 | 0.102 | 258.732987 | -40.317739 | -801.58 | 2356.50 |
| 7 | GUIDE | 1032066000 | 7.95 | 2528 | 0.127 | 0.151 | 0.063 | 0.103 | 259.957393 | -41.208388 | -1475.55 | -2221.15 |

2.4 Star Slots

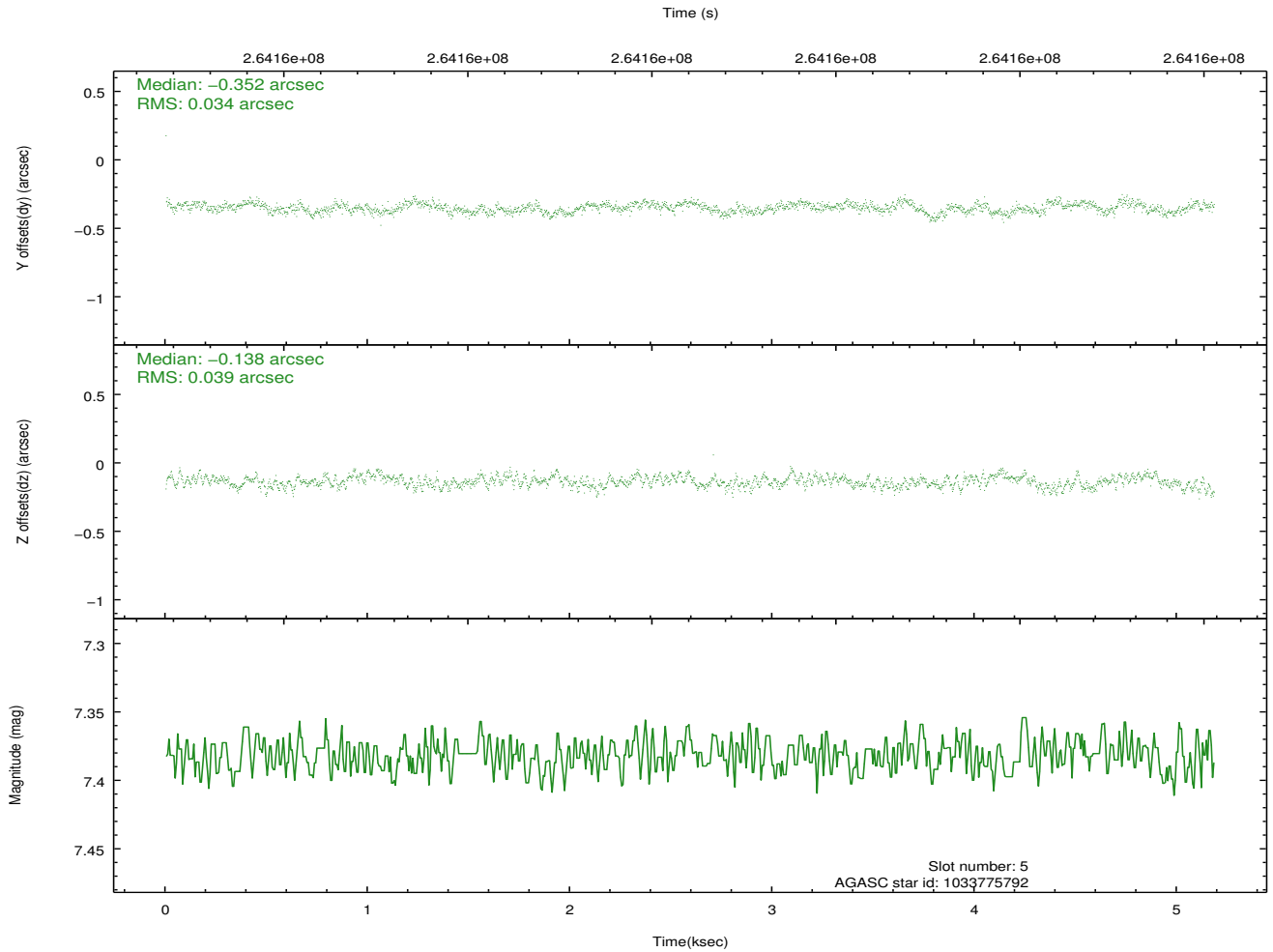
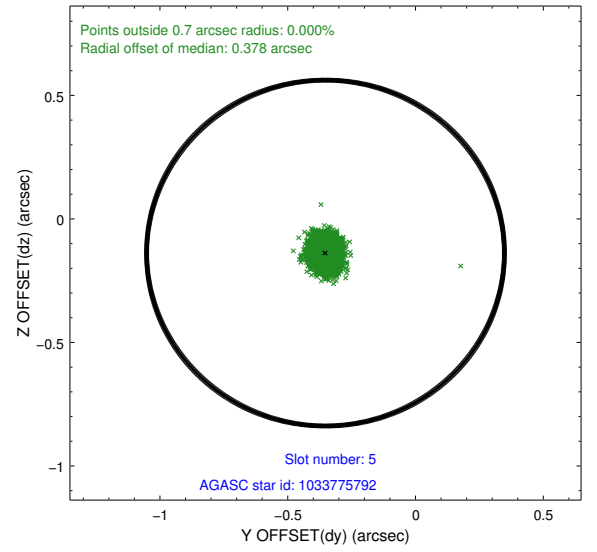
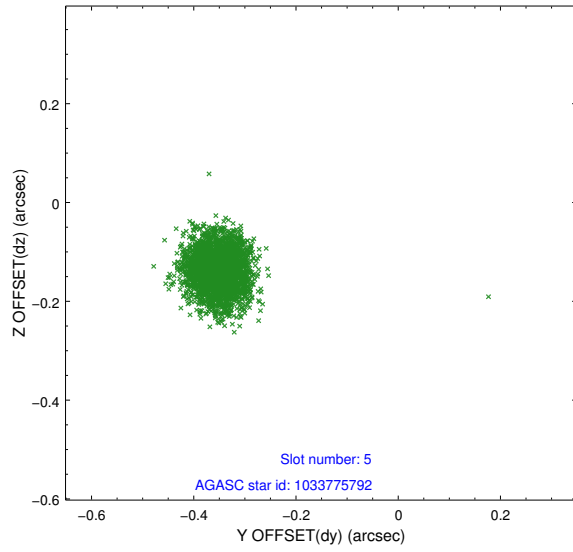
2.4.1 Slot 3



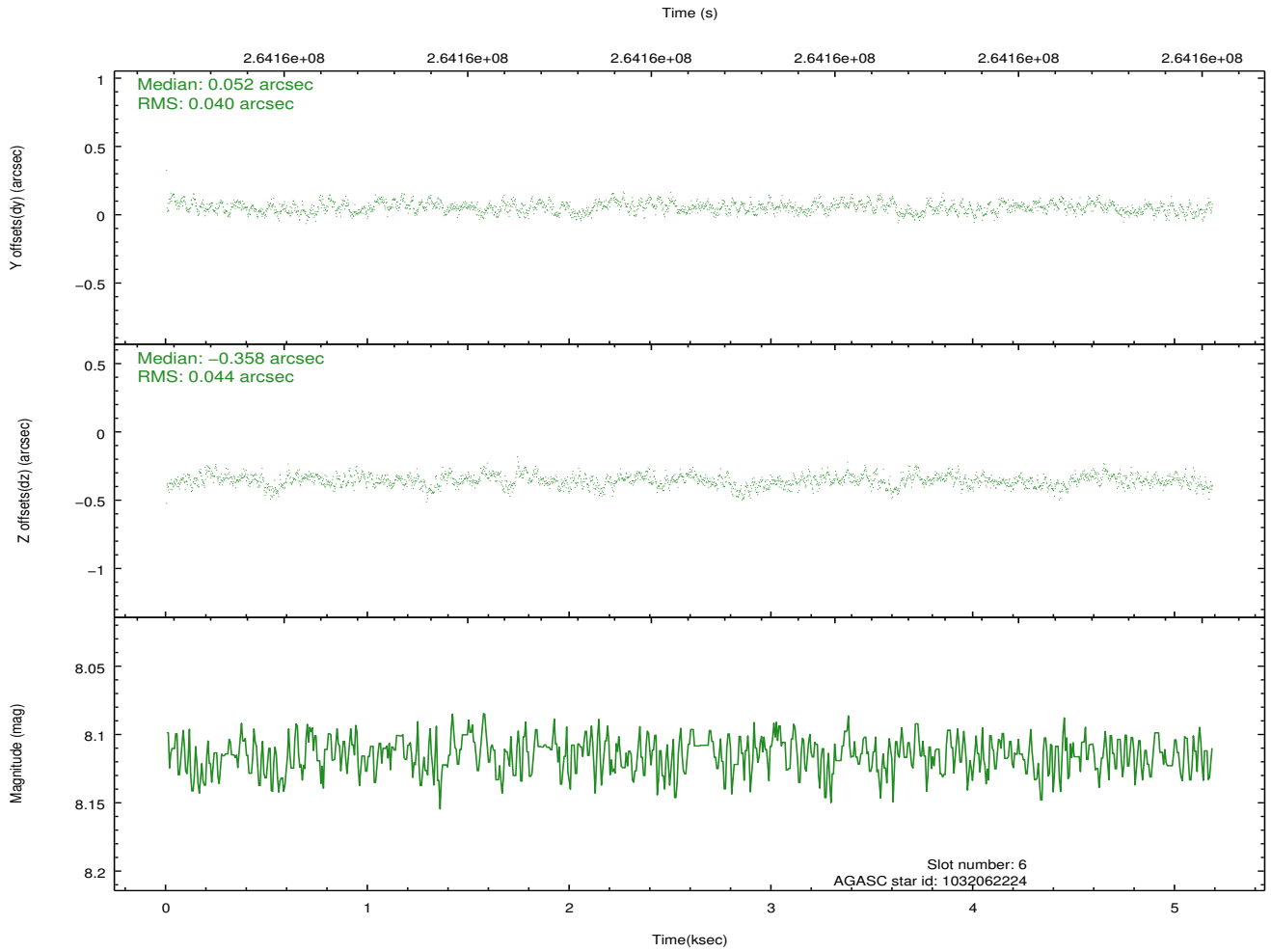
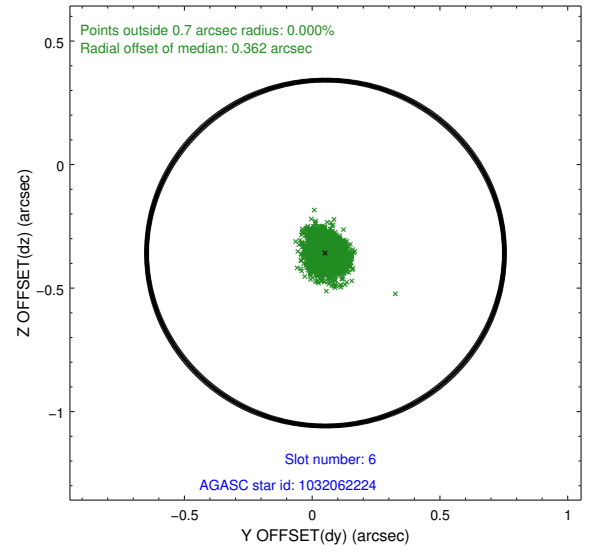
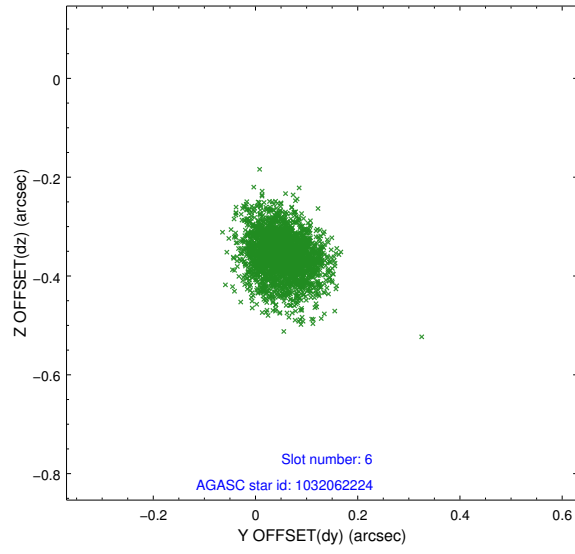
2.4.2 Slot 4



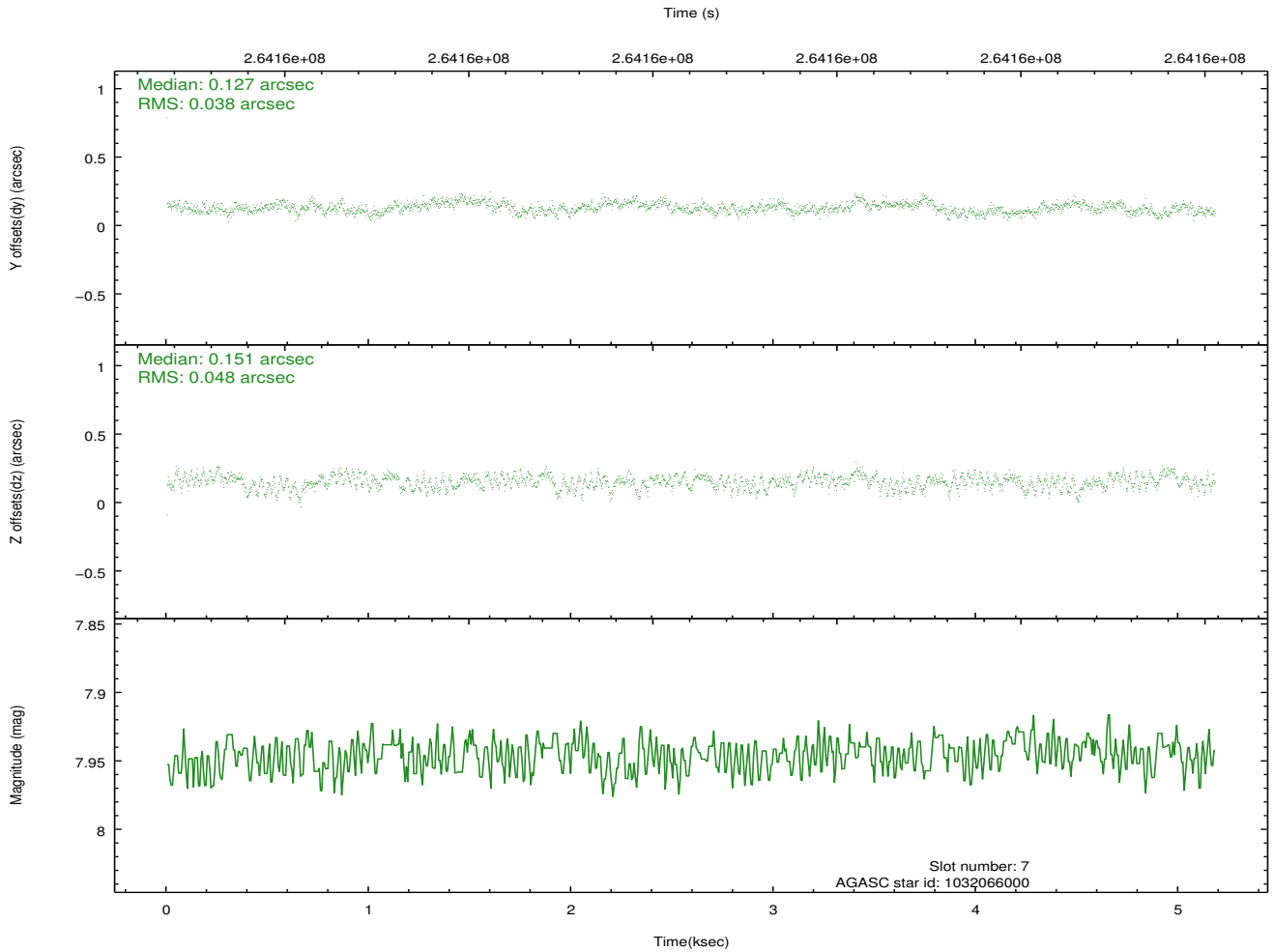
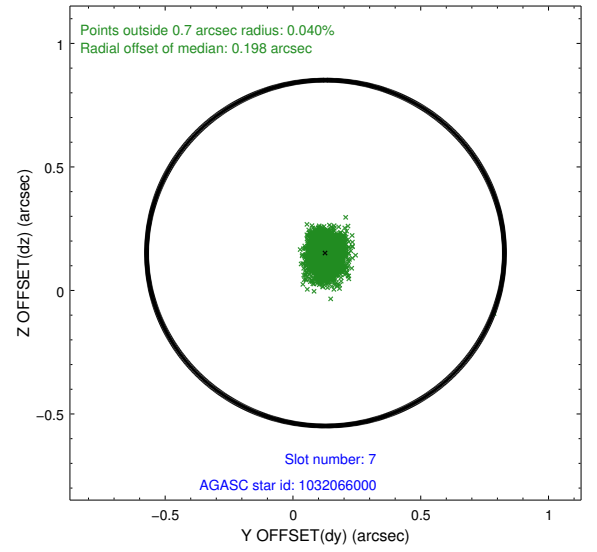
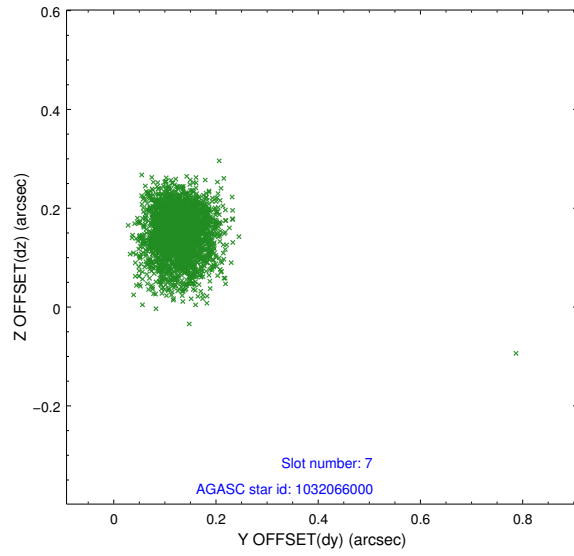
2.4.3 Slot 5



2.4.4 Slot 6

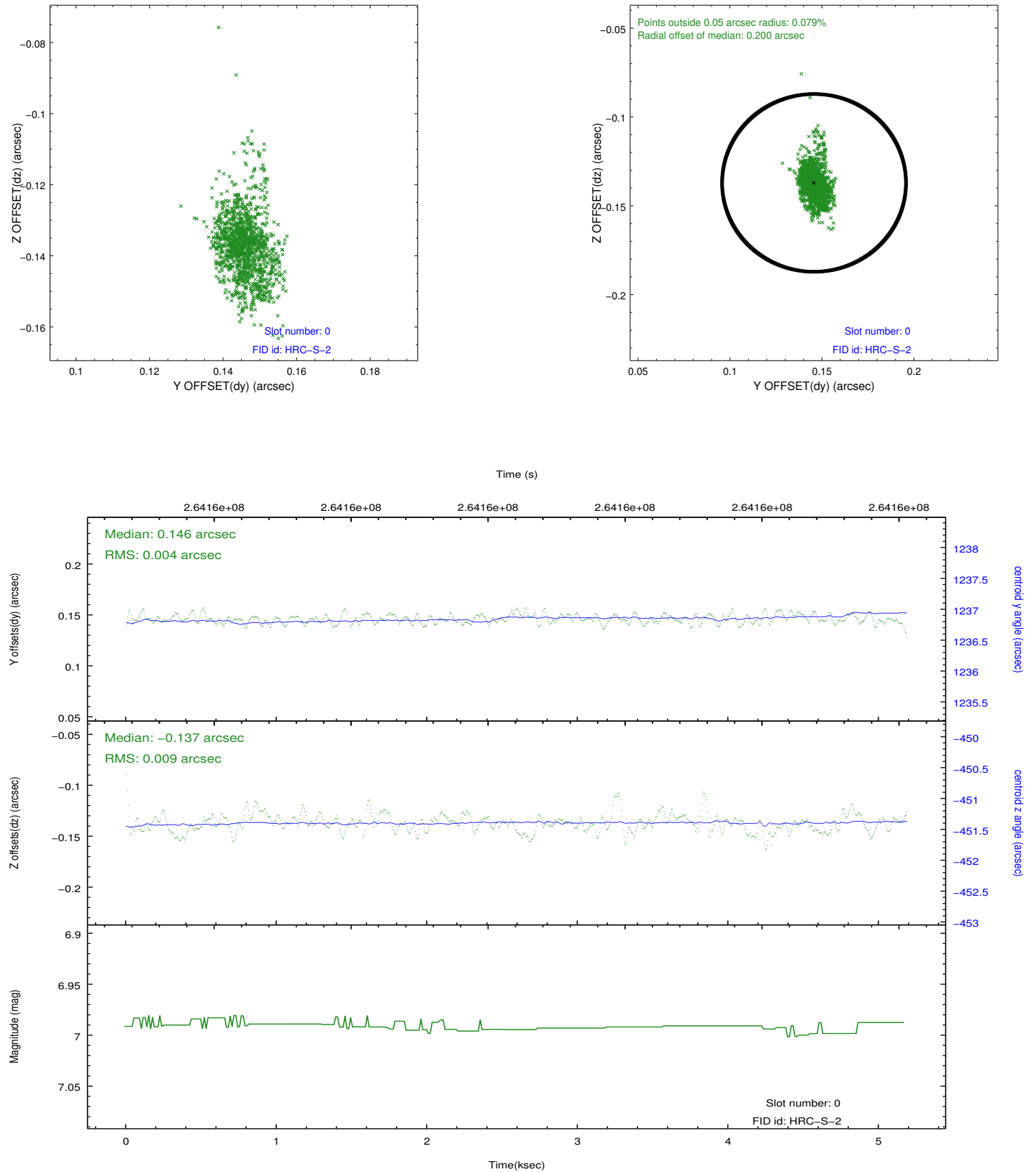


2.4.5 Slot 7

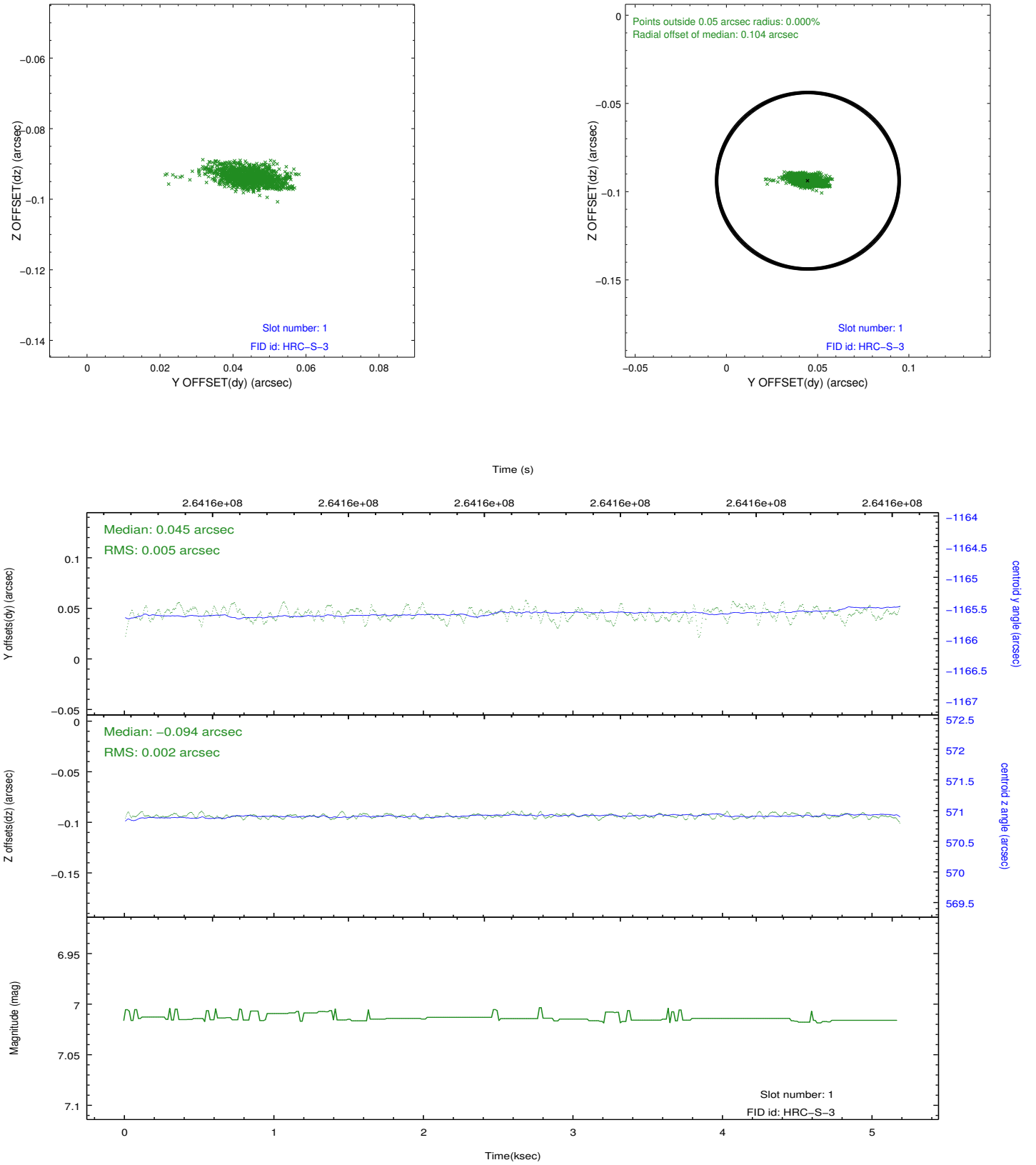


2.5 FID Slots

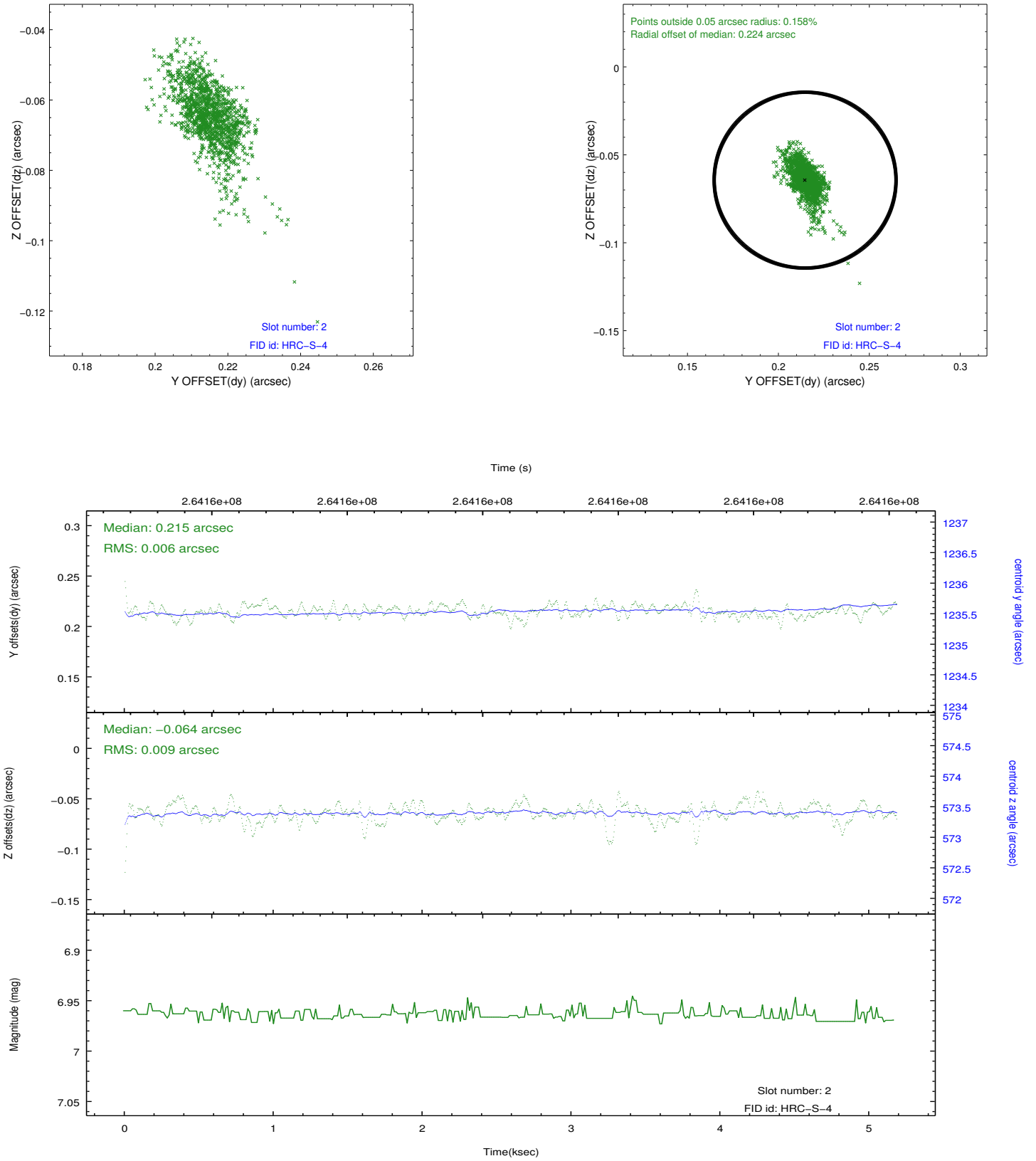
2.5.1 Slot 0



2.5.2 Slot 1



2.5.3 Slot 2



A Summary

A.1 Status

| | |
|----------------------------|------------|
| V&V Scientist | Jen Lauer |
| V&V Date (YYYY-MM-DD) | 2012.08.13 |
| V&V Edition | 1 |
| V&V Disposition and Status | OK |
| V&V Charge Time | 5.18163149 |

A.2 Comments