

# V&V Reference Report

## L2 ASCDS Version : 8.4.3

Observation 7247 - L2 Version 2  
Chandra X-Ray Center

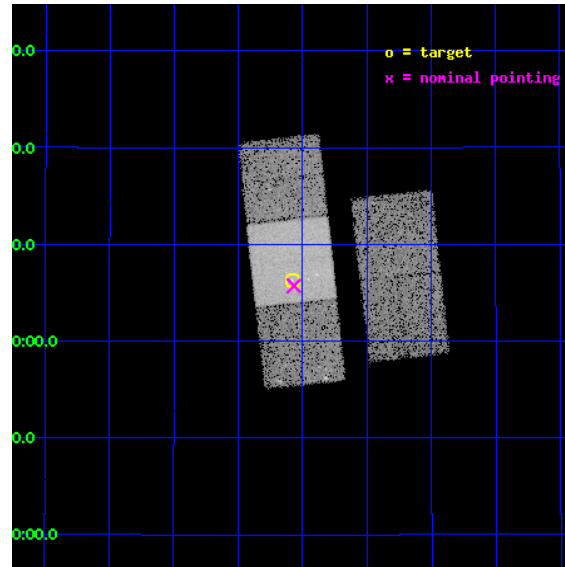
L2 Processing Date : Mar 20 2012

## Contents

<b>1</b>	<b>Front</b>	<b>2</b>
<b>2</b>	<b>OBI</b>	<b>3</b>
2.1	OBI . . . . .	3
2.1.1	Images . . . . .	3
2.1.2	Bias . . . . .	3
2.1.3	Parameters . . . . .	4
2.1.4	Events . . . . .	4
2.2	Compared Parameters . . . . .	5
2.3	Aspect . . . . .	6
2.4	Star Slots . . . . .	9
2.4.1	Slot 3 . . . . .	9
2.4.2	Slot 4 . . . . .	10
2.4.3	Slot 5 . . . . .	11
2.4.4	Slot 6 . . . . .	12
2.4.5	Slot 7 . . . . .	13
2.5	FID Slots . . . . .	14
2.5.1	Slot 0 . . . . .	14
2.5.2	Slot 1 . . . . .	15
2.5.3	Slot 2 . . . . .	16
<b>A</b>	<b>Summary</b>	<b>17</b>
A.1	Status . . . . .	17
A.2	Comments . . . . .	17

# 1 Front

seq_num	200384	Sequence number
obs_id	7247	Observation id
title	DG Tauri: A T Tauri Star with an X-Ray Jet?	Proposal title
observer	Prof. Manuel Guedel	Principal investigator
object	DG Tau	Source name
dtcycle	0	&#160
cycle	P	events from which exps? Prim/Second/Both
ra_targ	66.77	Observer's specified target RA [deg]
dec_targ	26.104694	Observer's specified target Dec [deg]
ra_nom	66.766990238702	Nominal RA [deg]
dec_nom	26.095394204526	Nominal Dec [deg]
roll_nom	263.75795096528	Nominal Roll [deg]
revision	2	Processing version of data
ontime	16157.199968904	Sum of GTIs [s]
livetime	15946.094256553	Livetime [s]
ontime2	16157.199968904	Sum of GTIs [s]
ontime3	16157.199968904	Sum of GTIs [s]
ontime6	16144.6360479	Sum of GTIs [s]
ontime7	16157.199968904	Sum of GTIs [s]
ontime8	16154.058998644	Sum of GTIs [s]
l2events	90488	Number of level 2 events

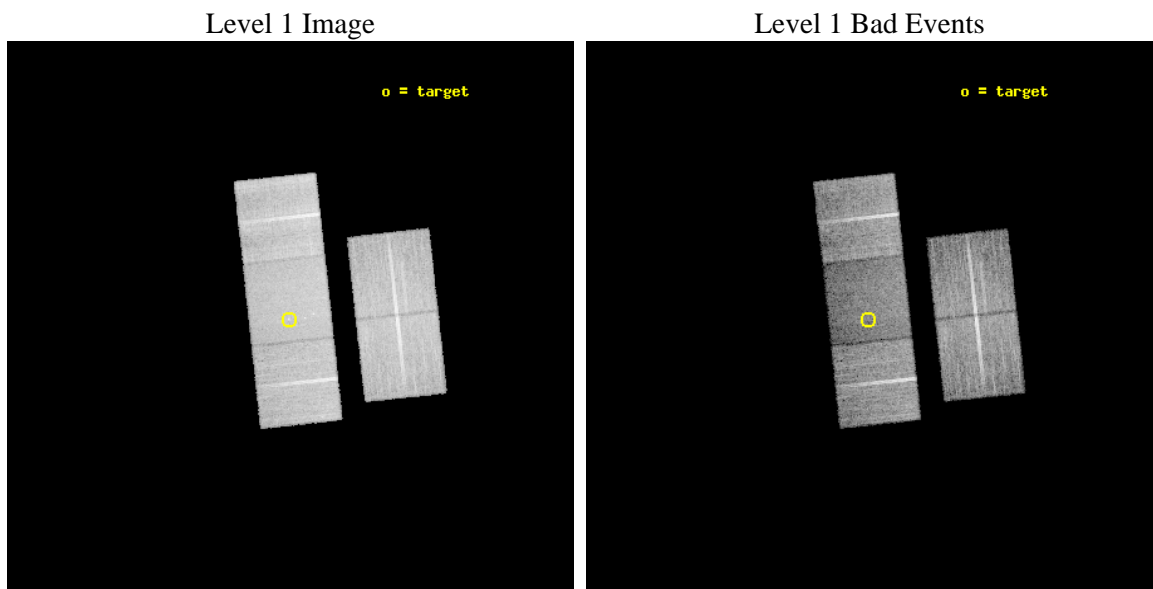




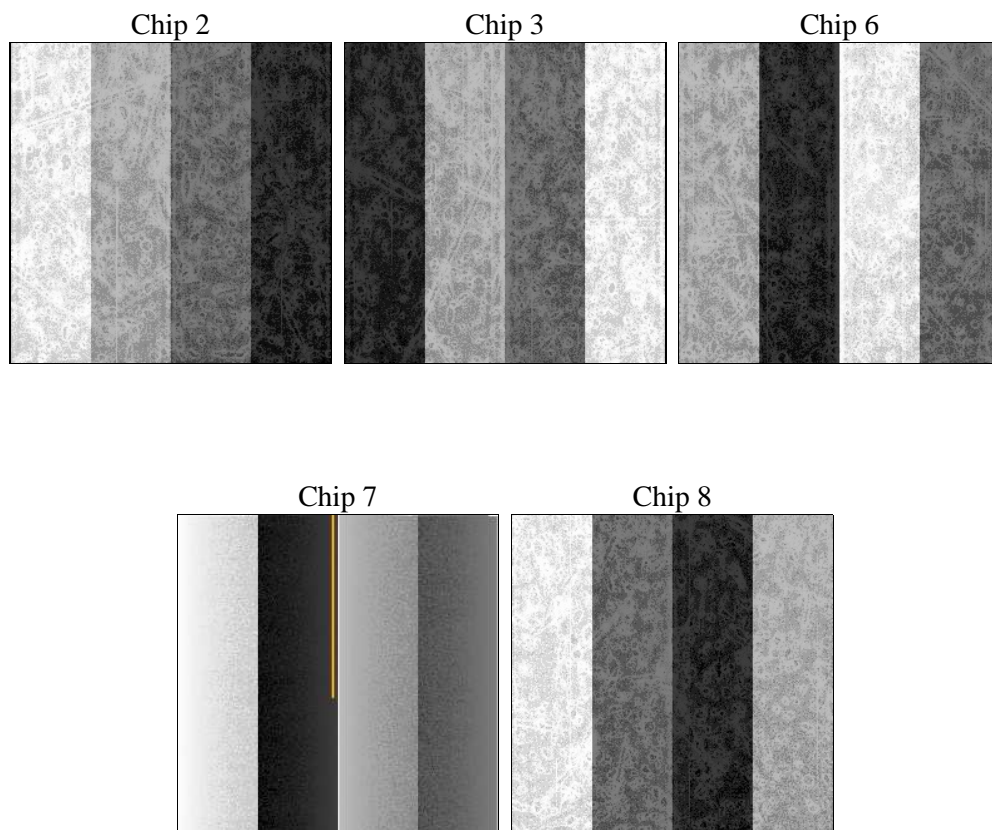
## 2 OBI

### 2.1 OBI

#### 2.1.1 Images



#### 2.1.2 Bias



### 2.1.3 Parameters

obi_num	0	Obi number	sched_exp_time	16000.000000	[s] Scheduled observation exposure time
ascdsver	8.4.3	Processing system revision	ontime	16157.199968904	Sum of GTIs [s]
caldsver	4.4.8	&#160	ontime2	16157.199968904	Sum of GTIs [s]
date	2012-03-20T02:54:53	Date and time of file creation	ontime3	16157.199968904	Sum of GTIs [s]
revision	2	Processing version of data	ontime6	16144.6360479	Sum of GTIs [s]
			ontime7	16157.199968904	Sum of GTIs [s]
			ontime8	16154.058998644	Sum of GTIs [s]
			l1events	618490	Number of level 1 events

### 2.1.4 Events

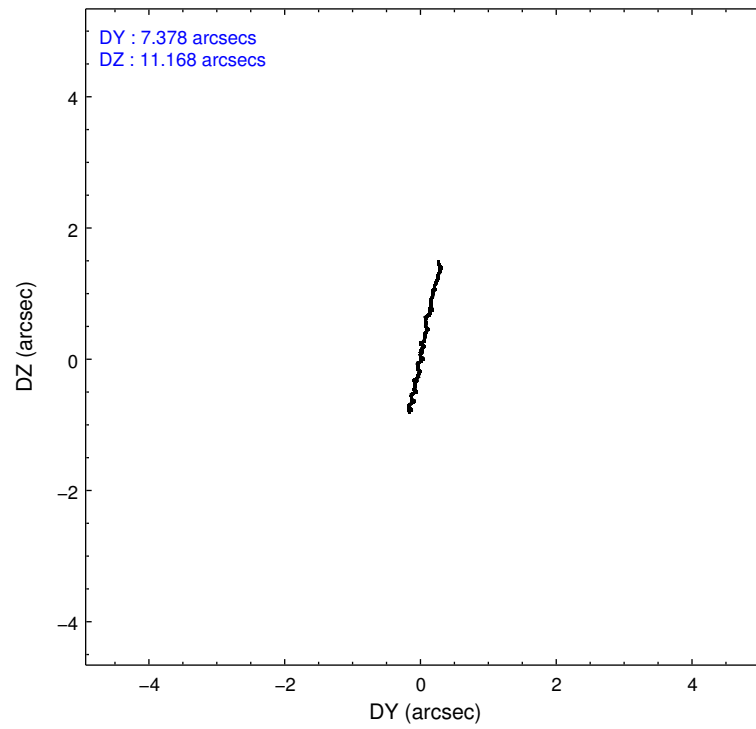
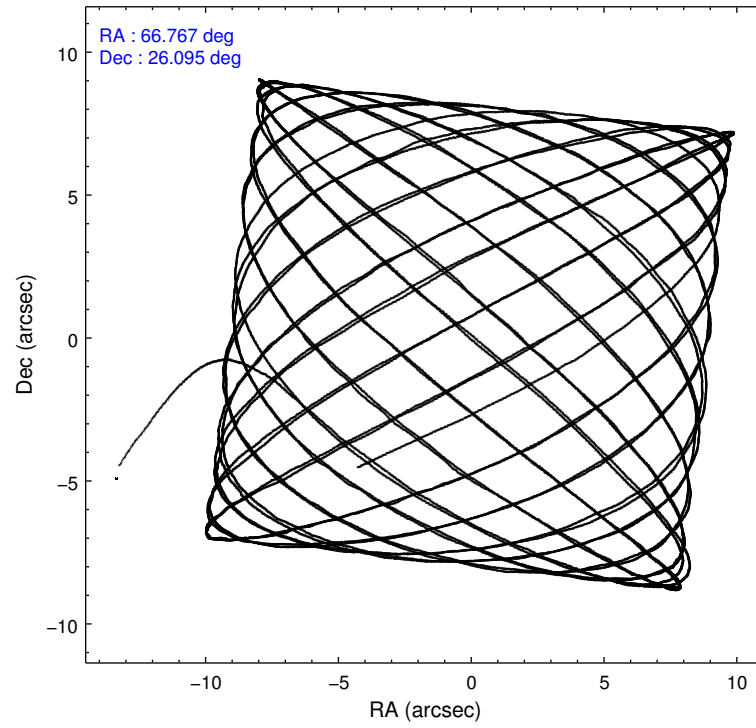
	ccd 2	ccd 3	ccd 6	ccd 7	ccd 8
level 1 events	119547	112372	117688	124342	144541
rejected events	109428	102481	106183	70343	112707
rejected %	91%	91%	90%	56%	77%

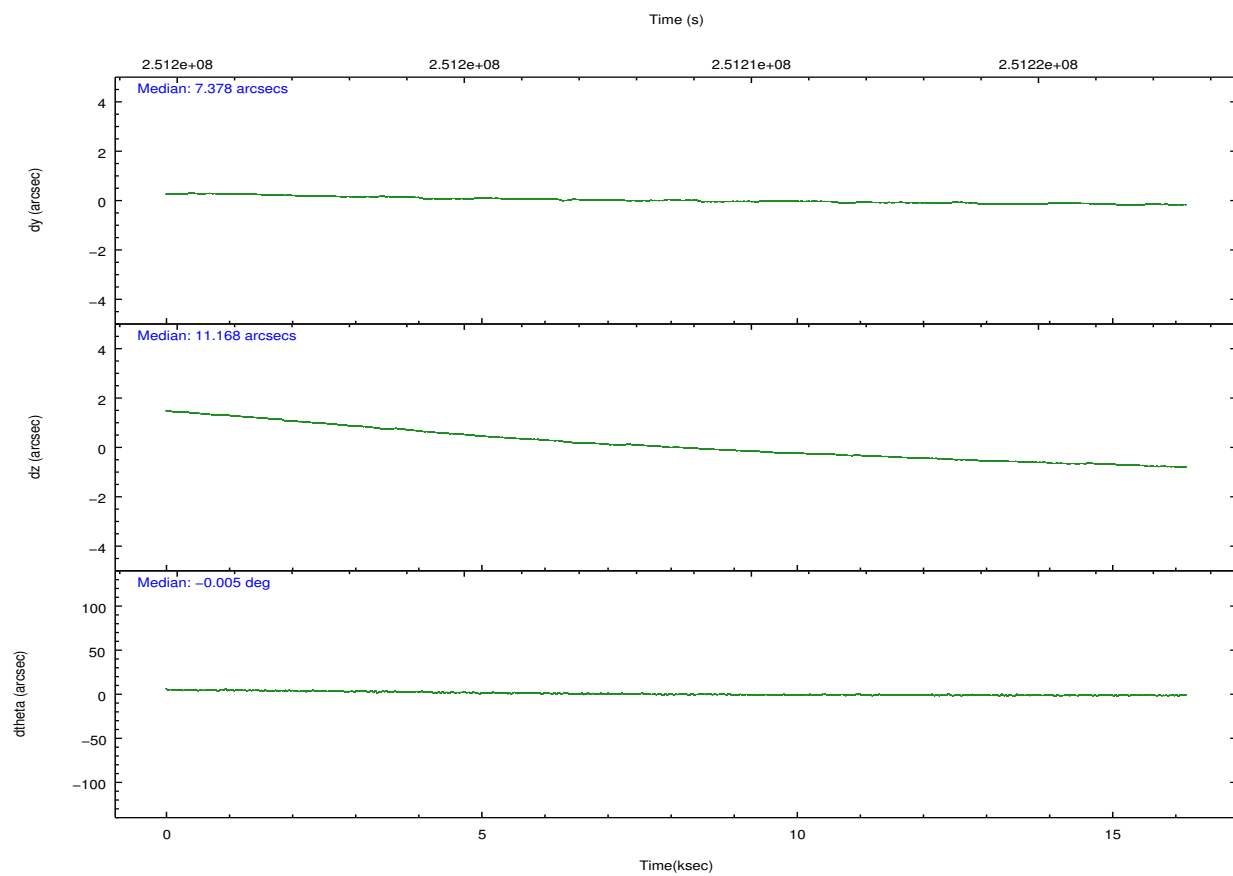
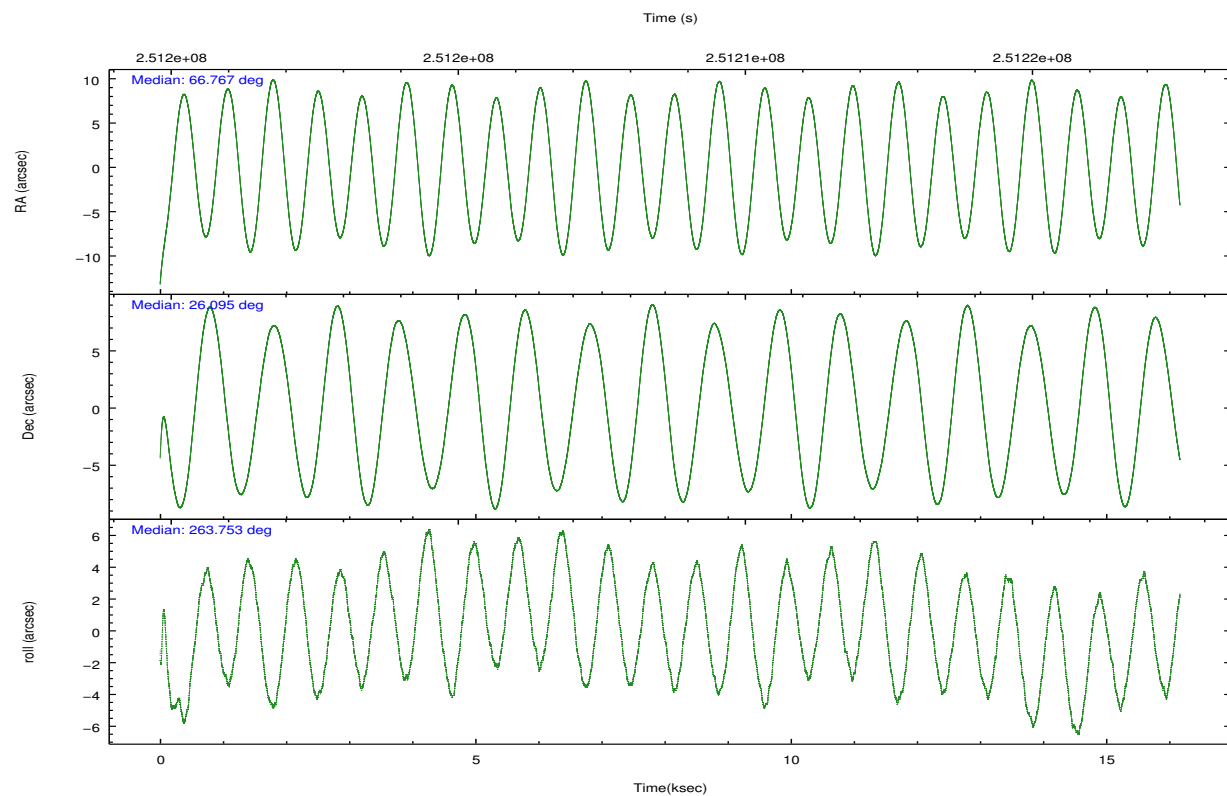
	ccd 2	ccd 3	ccd 6	ccd 7	ccd 8
grade 0 events	3782	3526	4229	4866	9506
	3%	3%	3%	3%	6%
grade 1 events	42	60	57	130	108
	0%	0%	0%	0%	0%
grade 2 events	2491	2277	2649	11177	7543
	2%	2%	2%	8%	5%
grade 3 events	1169	1265	1285	5382	3822
	0%	1%	1%	4%	2%
grade 4 events	1204	1178	1352	5193	3390
	1%	1%	1%	4%	2%
grade 5 events	3520	4256	4720	13133	6481
	2%	3%	4%	10%	4%
grade 6 events	1913	2058	2498	29866	9173
	1%	1%	2%	24%	6%
grade 7 events	105426	97752	100898	54595	104518
	88%	86%	85%	43%	72%

## 2.2 Compared Parameters

Parameter	Planned	Actual	Parameter	Planned	Actual
Instrument	ACIS	ACIS	Obspar format version number	7	7
Detector	ACIS-23678	ACIS-23678	Obspar file type	PREDICTED	ACTUAL
Grating	NONE	NONE	Obspar update status	NONE	UPDATED
Data mode	VFAINT	VFAINT	Number of optional ACIS chips dropped	0	0
Observation mode	POINTING	POINTING	On-chip summing requested	N	N
[deg] Pointing RA	66.754376	66.76699023870209	Subarray requested	NONE	NONE
[deg] Pointing Dec	26.120185	26.09539420452628	Alternating exposures requested	N	N
[deg] Pointing Roll	263.606880	263.7579509652772	[s] Primary exposure time	0.000000	3.1
[mm] SIM focus pos	-0.684267	-0.6828225247311905			
[mm] SIM defocus	0	0.001444936568705701			
[mm] SIM translation stage pos	-190.132523	-190.1425803651734			
[mm] SIM translation stage offset	0	0.01005778216563158			
[s] Observation start time (MET)	251200768.184000	251199425.95755			
Observation start date	2005-12-17T09:58:24	2005-12-17T09:37:05			
[s] Observation end time (MET)	251216768.184000	251217277.35838			
Observation end date	2005-12-17T14:25:04	2005-12-17T14:34:37			
Read mode	TIMED	TIMED			

## 2.3 Aspect



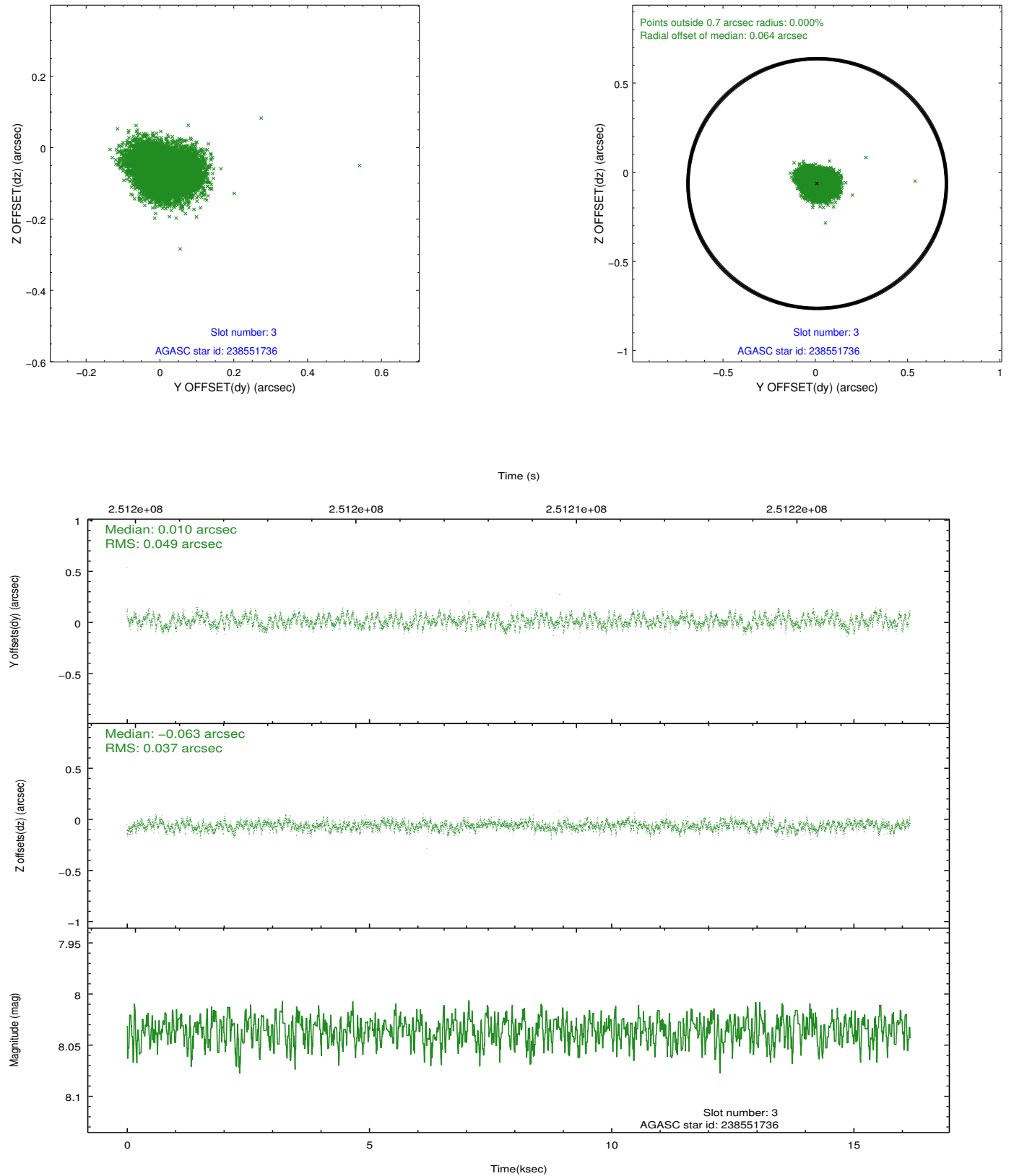


### Slot Statistics

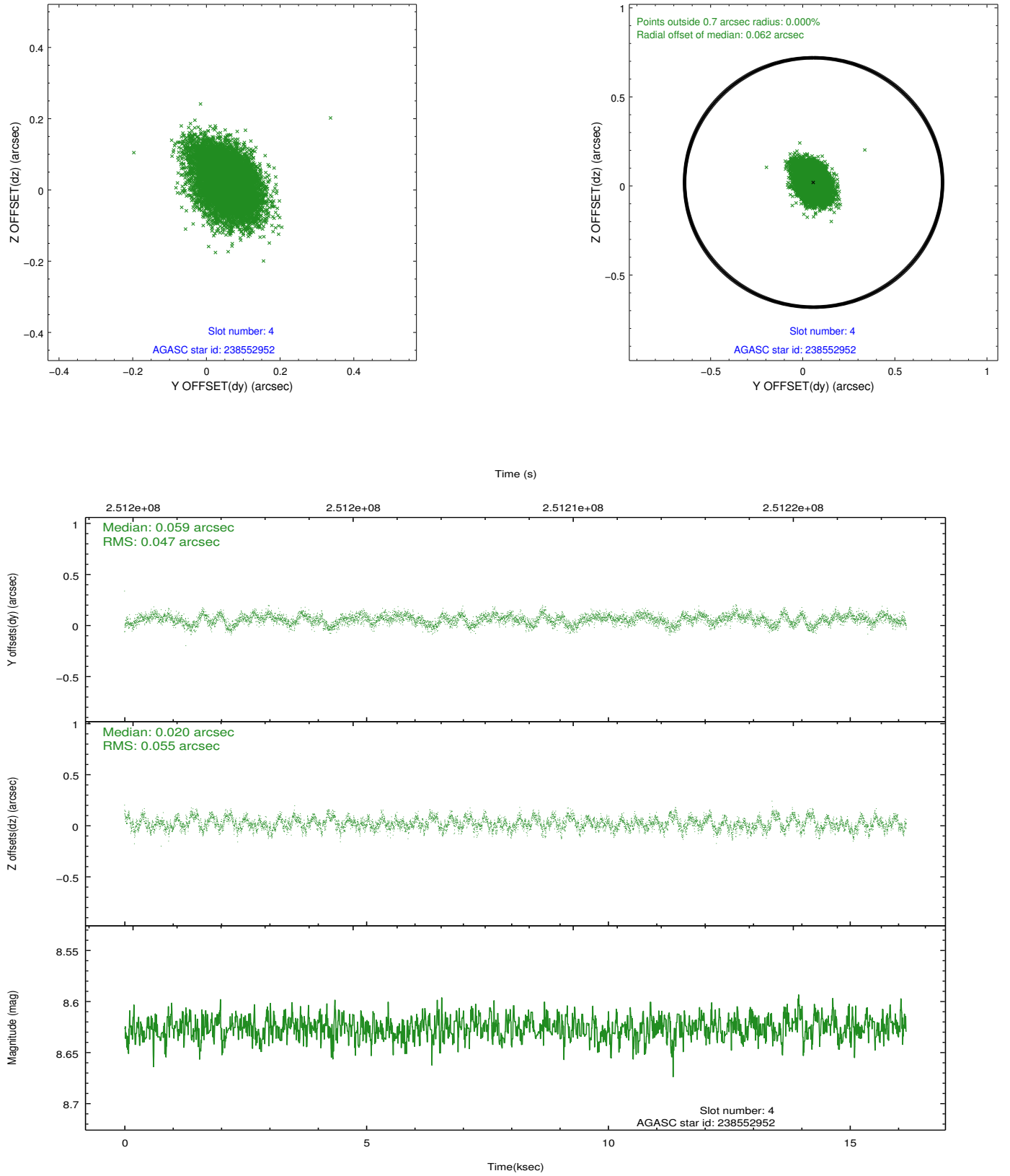
slot	status	id	mag	n_pts	med_dy	med_dz	dr1	dr2	ra	dec	mean_y	mean_z
0	FID	ACIS-S-2	7.10	3942	-0.044	-0.029	0.018	0.035	0.000000	0.000000	-760.18	-1732.56
1	FID	ACIS-S-4	7.21	3943	0.104	0.028	0.011	0.018	0.000000	0.000000	2153.10	175.74
2	FID	ACIS-S-5	7.23	3943	-0.092	0.007	0.014	0.036	0.000000	0.000000	-1812.75	169.64
3	GUIDE	238551736	8.04	7884	0.010	-0.063	0.066	0.102	66.295103	25.749175	1491.11	-1331.02
4	GUIDE	238552952	8.63	7887	0.059	0.020	0.076	0.127	66.435210	25.897396	911.51	-937.99
5	GUIDE	238560976	7.90	7882	-0.055	0.011	0.059	0.094	66.476513	25.572013	2061.11	-676.83
6	GUIDE	240257560	8.71	7881	-0.011	0.022	0.061	0.101	66.998185	25.718771	1347.81	946.95
7	GUIDE	240781424	9.17	7876	0.002	0.007	0.095	0.149	67.378197	26.671551	-2200.38	1773.40

## 2.4 Star Slots

### 2.4.1 Slot 3

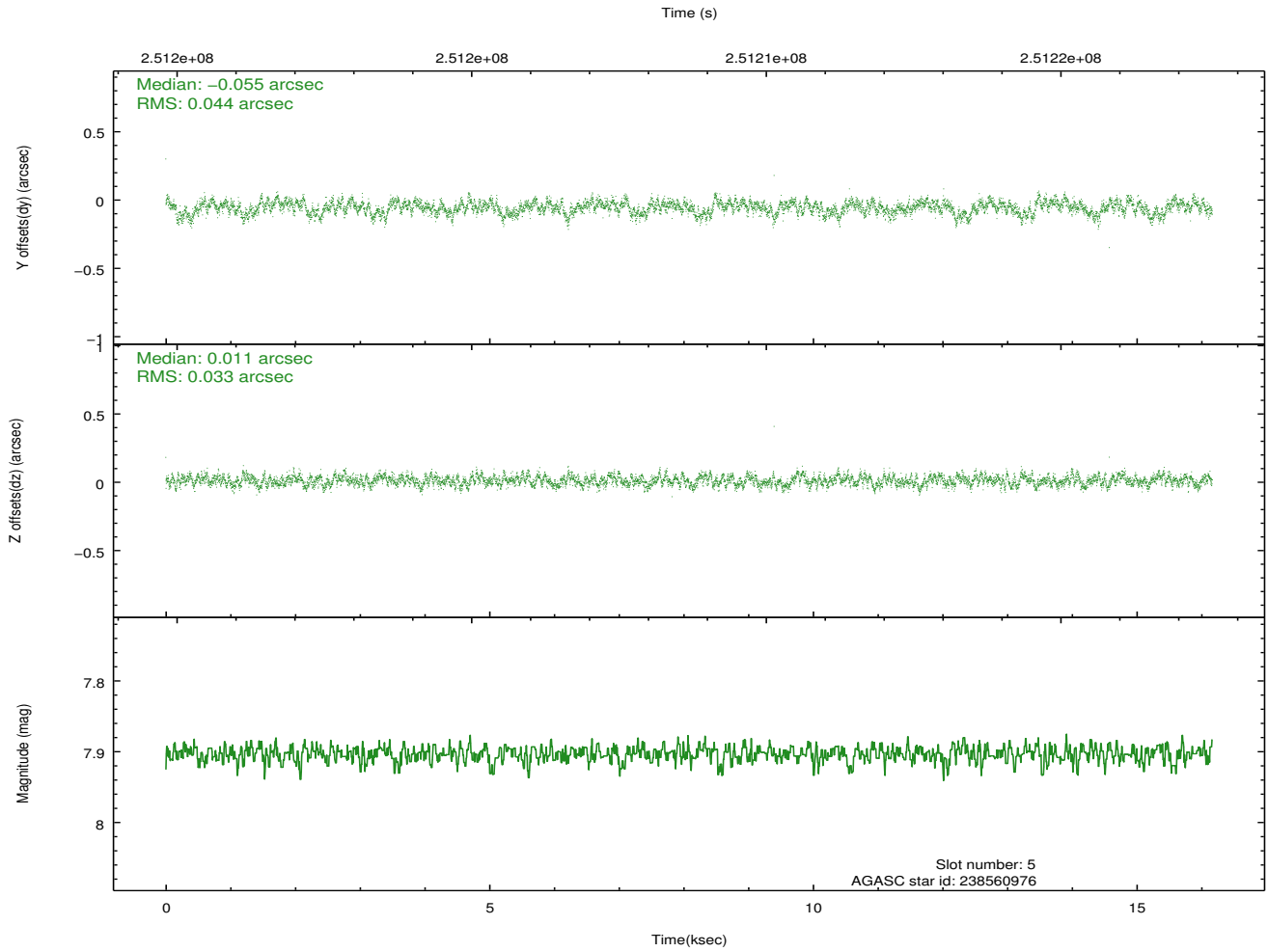
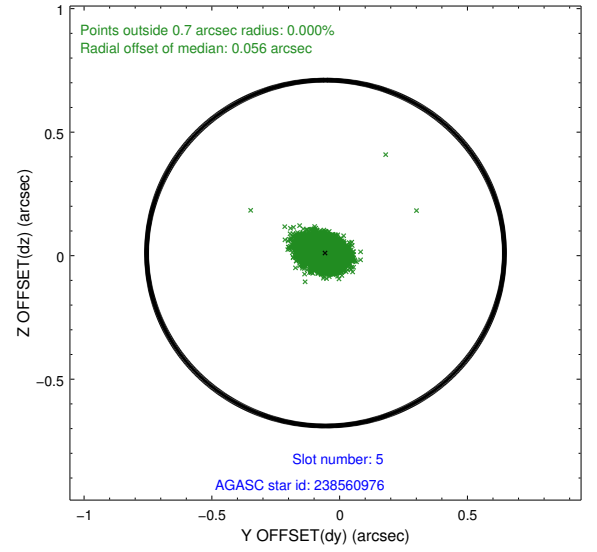
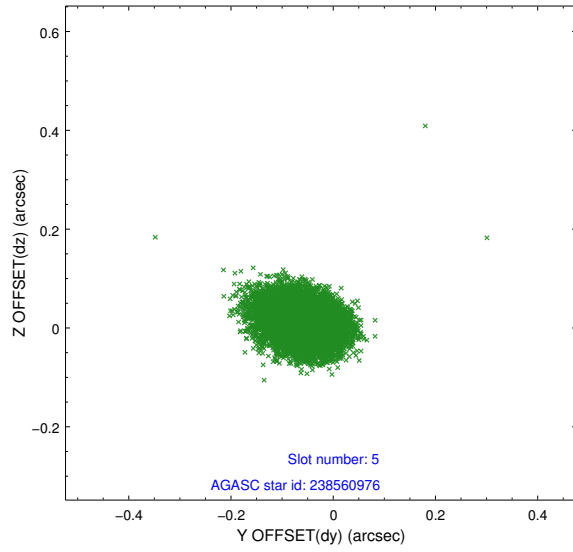


## 2.4.2 Slot 4

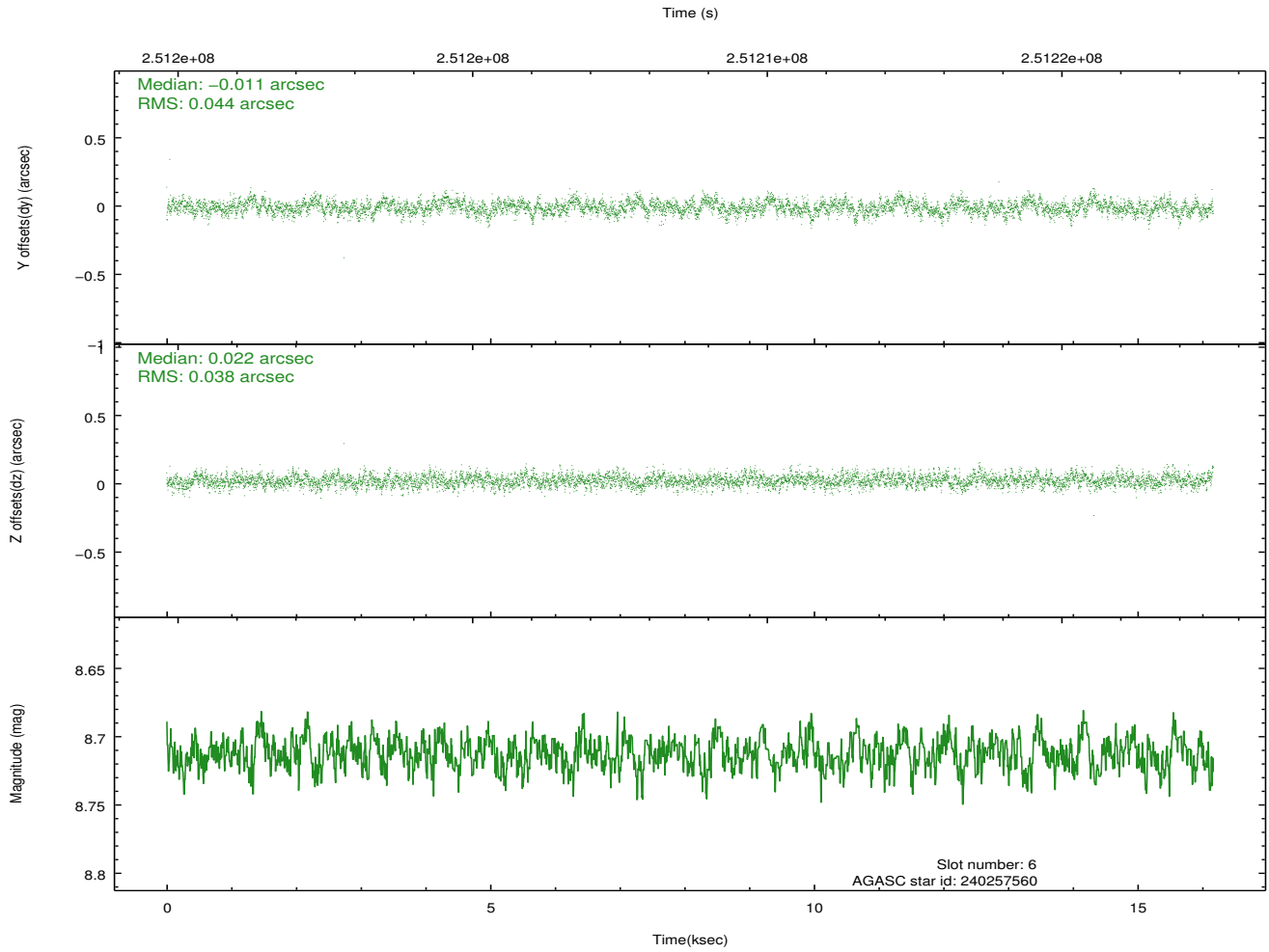
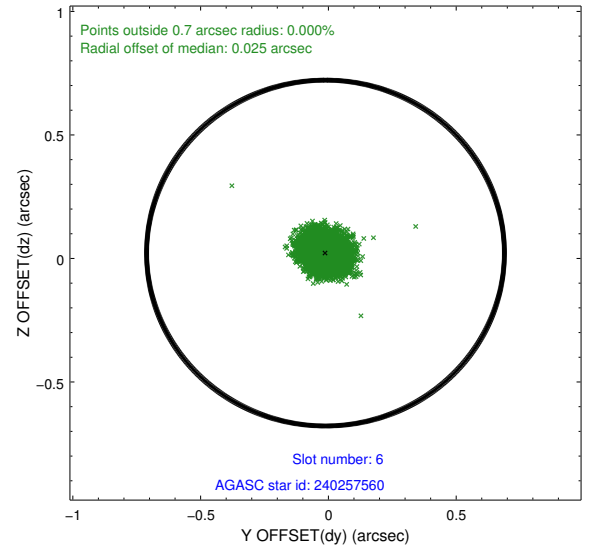
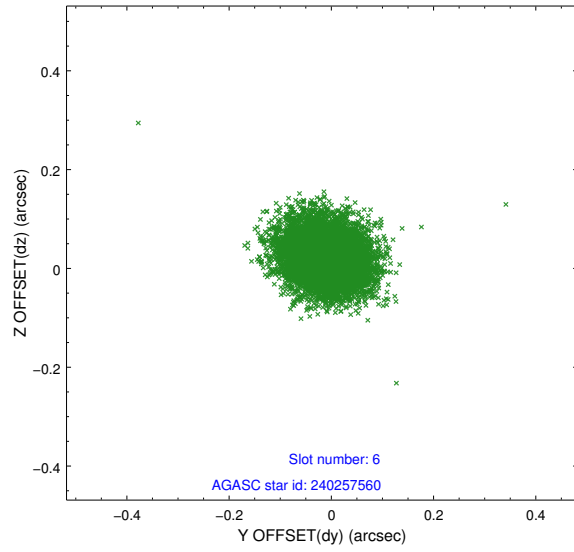




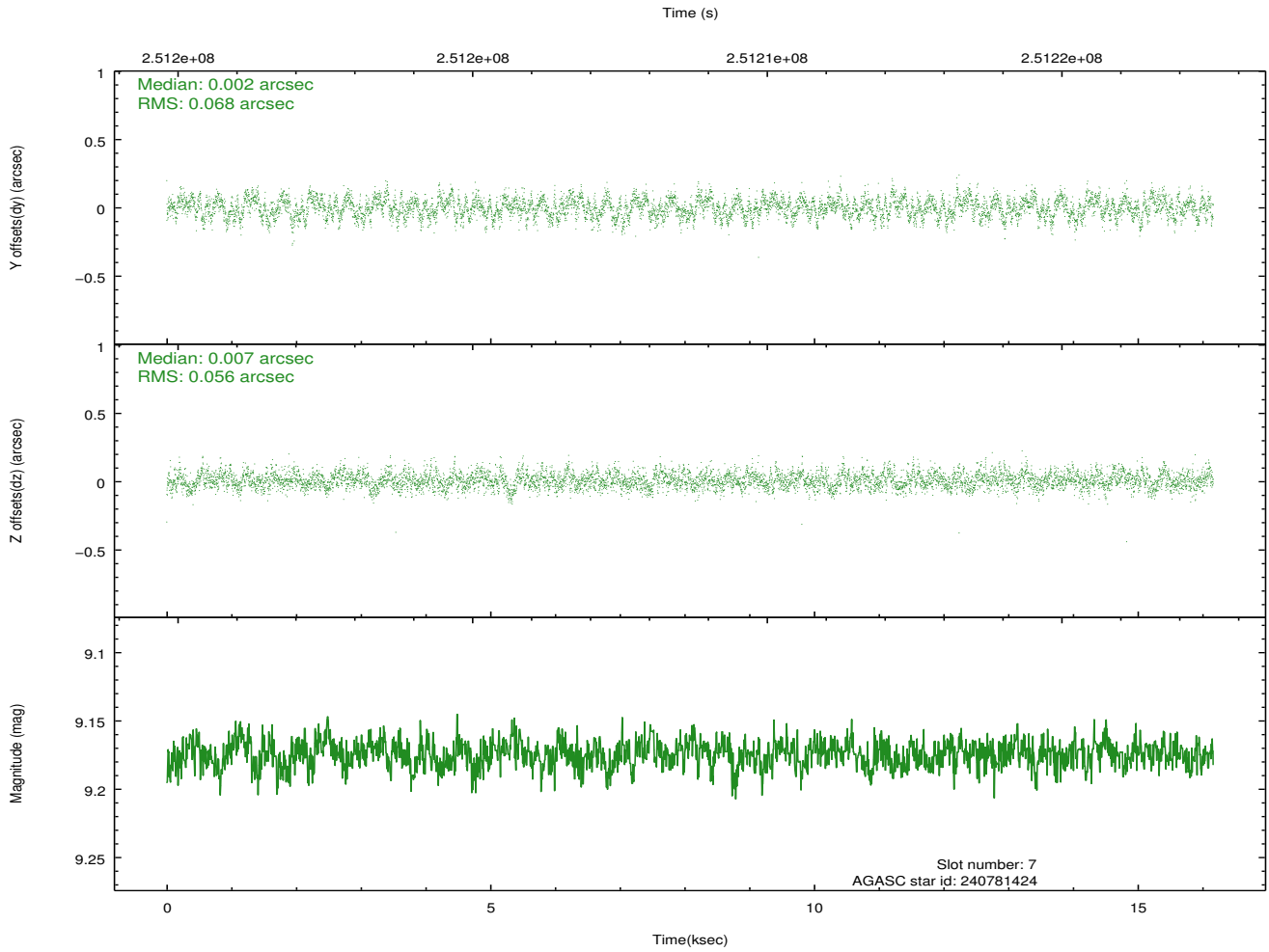
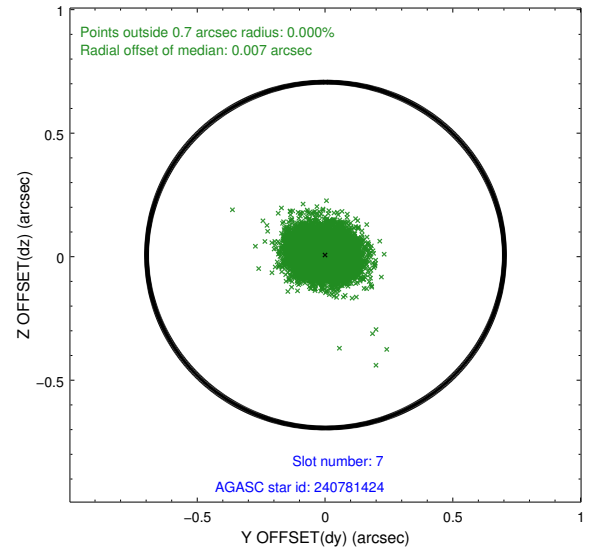
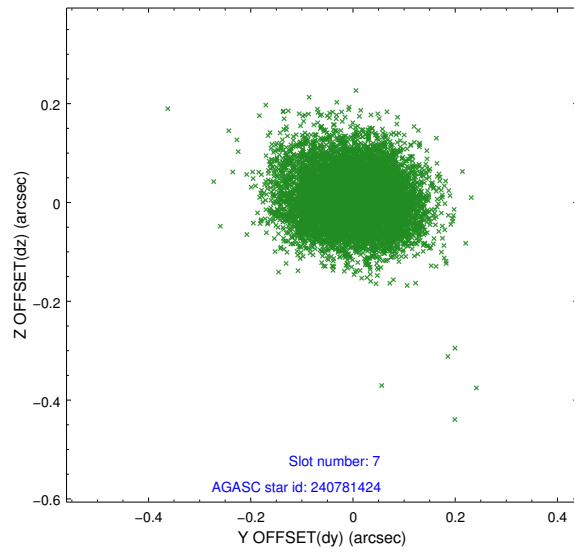
### 2.4.3 Slot 5



## 2.4.4 Slot 6

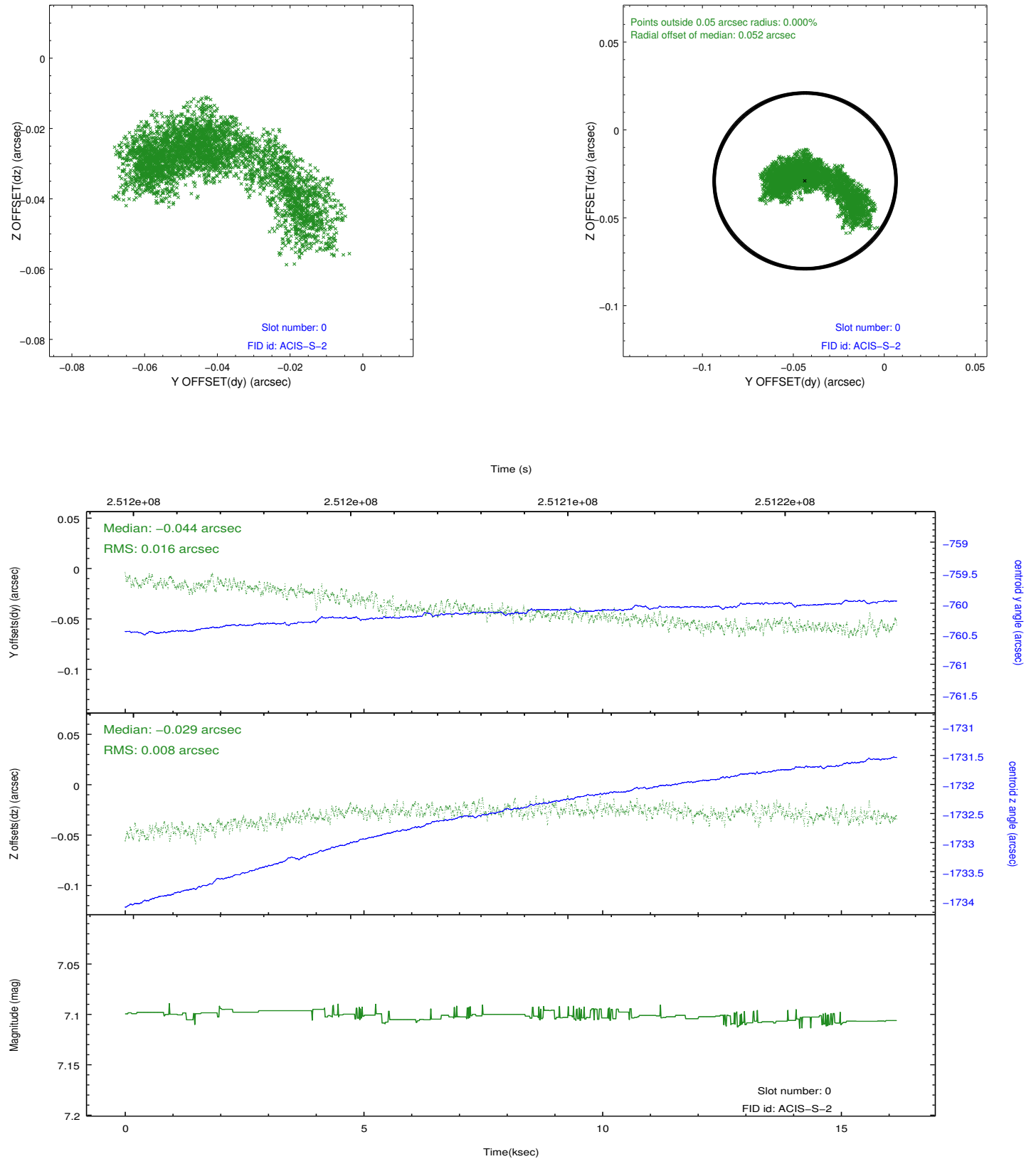


## 2.4.5 Slot 7

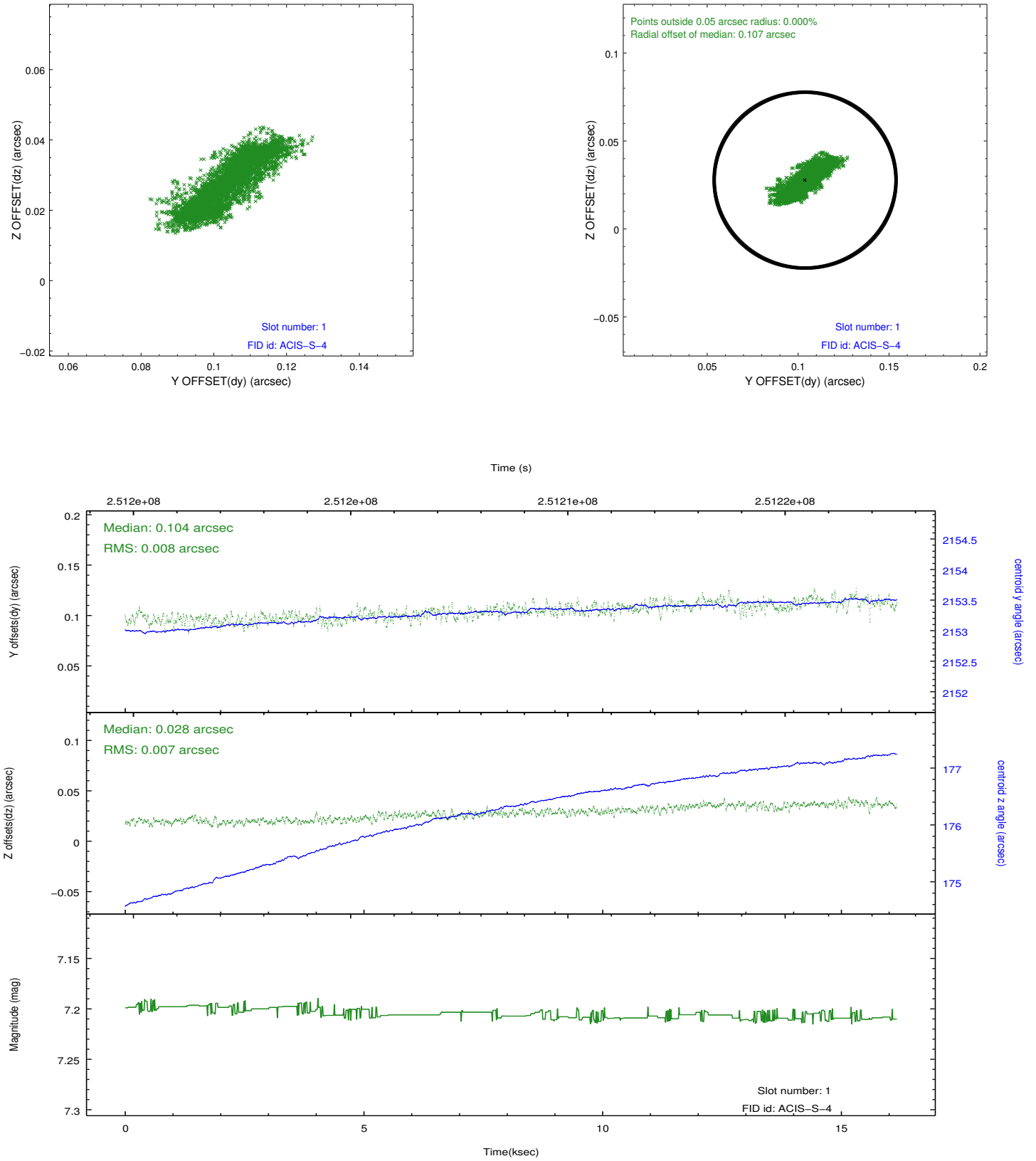


## 2.5 FID Slots

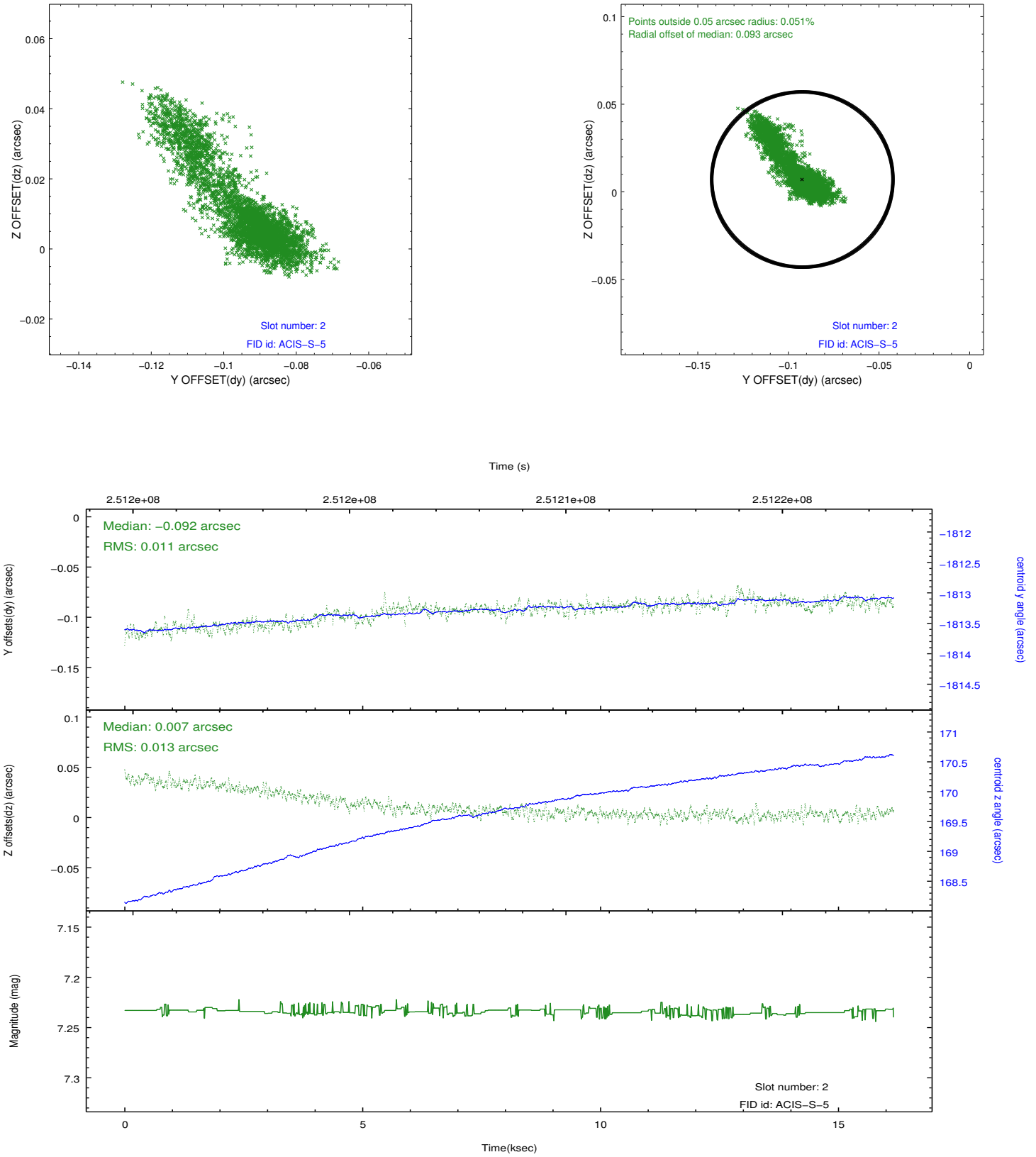
### 2.5.1 Slot 0



## 2.5.2 Slot 1



### 2.5.3 Slot 2



## A Summary

### A.1 Status

V&V Scientist	Jen Lauer
V&V Date (YYYY-MM-DD)	2012.03.20
V&V Edition	1
V&V Disposition and Status	OK
V&V Charge Time	16.15719

### A.2 Comments

Dither pattern may overlap a CCD node boundary, which has 2 columns marked as bad data.