

V&V Reference Report

L2 ASCDS Version : 8.4.3

Observation 6429 - L2 Version 2
Chandra X-Ray Center

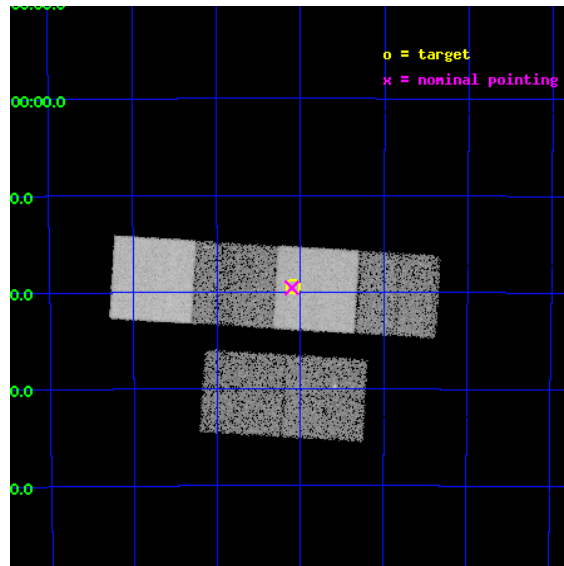
L2 Processing Date : Mar 27 2012

Contents

1	Front	2
2	OBI	3
2.1	OBI	3
2.1.1	Images	3
2.1.2	Bias	3
2.1.3	Parameters	4
2.1.4	Events	4
2.2	Compared Parameters	5
2.3	Aspect	6
2.4	Star Slots	9
2.4.1	Slot 3	9
2.4.2	Slot 4	10
2.4.3	Slot 5	11
2.4.4	Slot 6	12
2.4.5	Slot 7	13
2.5	FID Slots	14
2.5.1	Slot 0	14
2.5.2	Slot 1	15
2.5.3	Slot 2	16
A	Summary	17
A.1	Status	17
A.2	Comments	17

1 Front

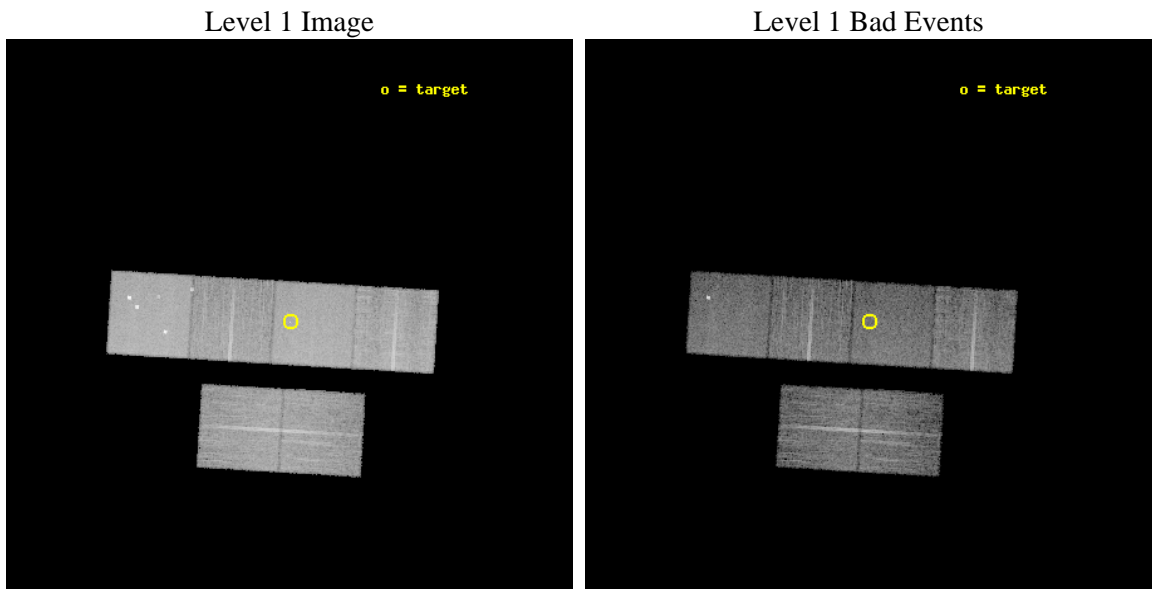
seq_num	200403	Sequence number
obs_id	6429	Observation id
title	X-Ray Activity and Winds in Young A Stars at the Epoch of Disk Clearing	Proposal title
observer	Dr. Carol Grady	Principal investigator
object	HD 100453	Source name
dtcycle	0	
cycle	P	events from which exps? Prim/Second/Both
ra_targ	173.273333	Observer's specified target RA [deg]
dec_targ	-54.324583	Observer's specified target Dec [deg]
ra_nom	173.27557463121	Nominal RA [deg]
dec_nom	-54.326213912145	Nominal Dec [deg]
roll_nom	3.4194422511056	Nominal Roll [deg]
revision	2	Processing version of data
ontime	9811.1999634504	Sum of GTIs [s]
livetime	9686.9646419179	Livetime [s]
ontime2	9811.1999634504	Sum of GTIs [s]
ontime3	9811.1727818251	Sum of GTIs [s]
ontime5	9811.1999634504	Sum of GTIs [s]
ontime6	9811.1999634504	Sum of GTIs [s]
ontime7	9811.1999634504	Sum of GTIs [s]
ontime8	9811.1317418516	Sum of GTIs [s]
l2events	137826	Number of level 2 events



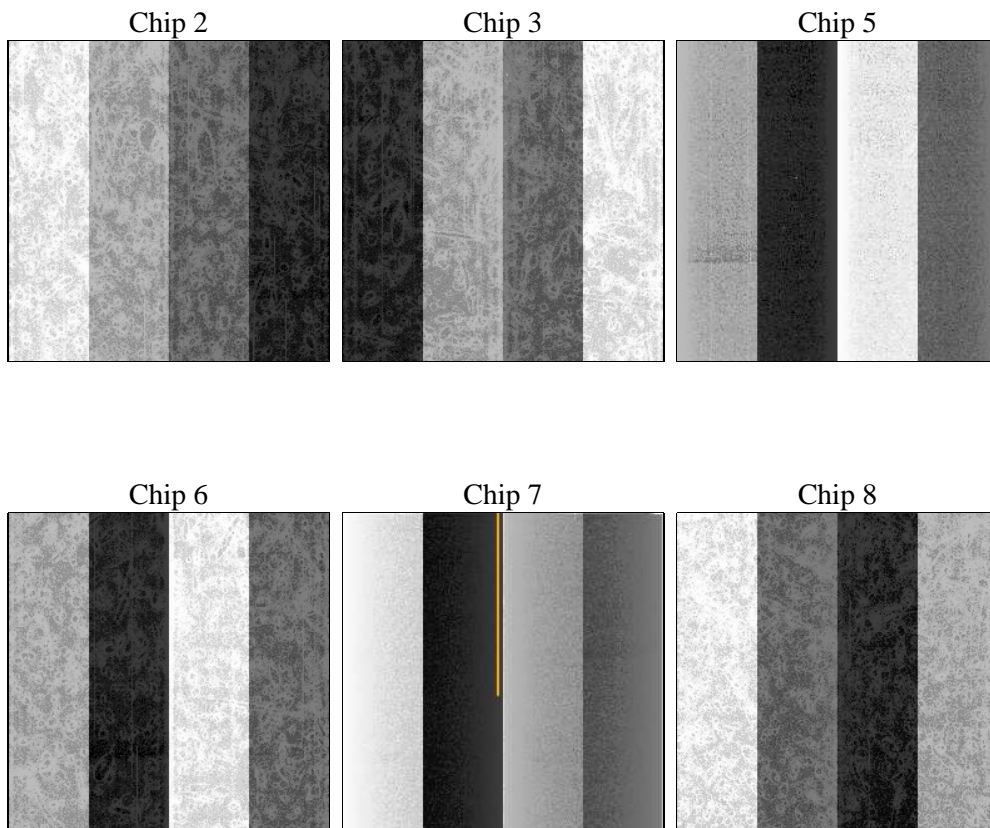
2 OBI

2.1 OBI

2.1.1 Images



2.1.2 Bias



2.1.3 Parameters

obi_num	0	Obi number	sched_exp_time	9857.263000	[s] Scheduled observation exposure time
ascdsver	8.4.3	Processing system revision	ontime	9811.1999634504	Sum of GTIs [s]
caldsver	4.4.8	 	ontime2	9811.1999634504	Sum of GTIs [s]
date	2012-03-27T05:35:52	Date and time of file creation	ontime3	9811.1727818251	Sum of GTIs [s]
revision	2	Processing version of data	ontime5	9811.1999634504	Sum of GTIs [s]
			ontime6	9811.1999634504	Sum of GTIs [s]
			ontime7	9811.1999634504	Sum of GTIs [s]
			ontime8	9811.1317418516	Sum of GTIs [s]
			l1events	611568	Number of level 1 events

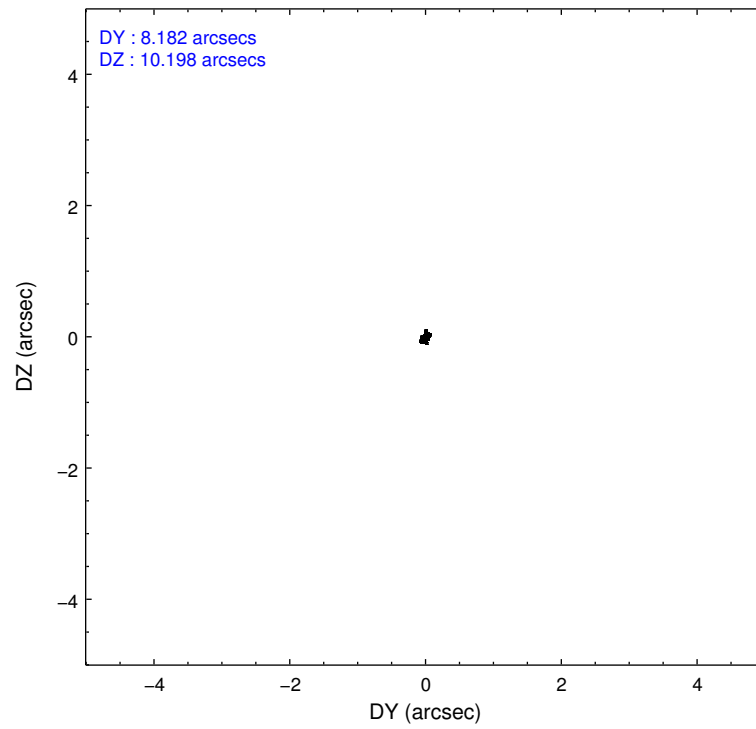
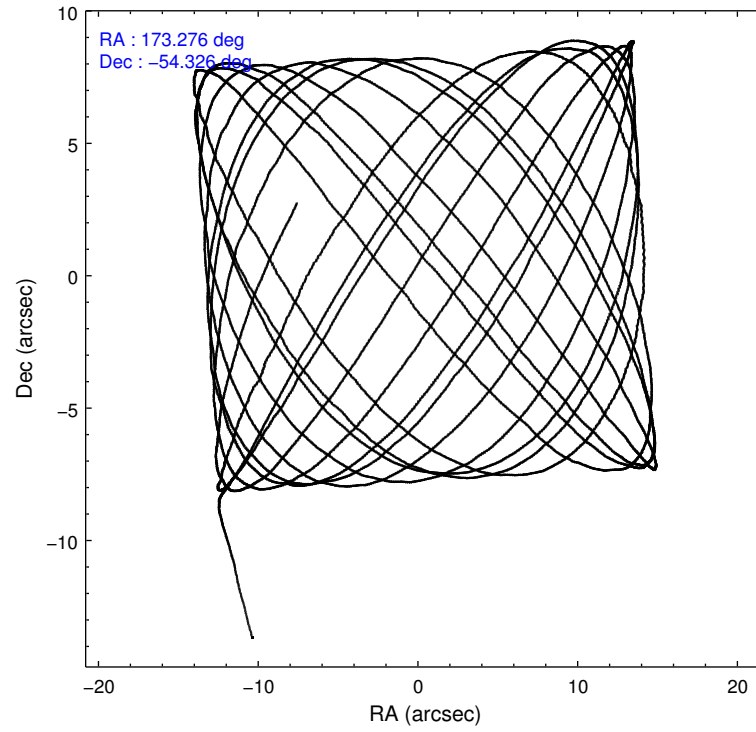
2.1.4 Events

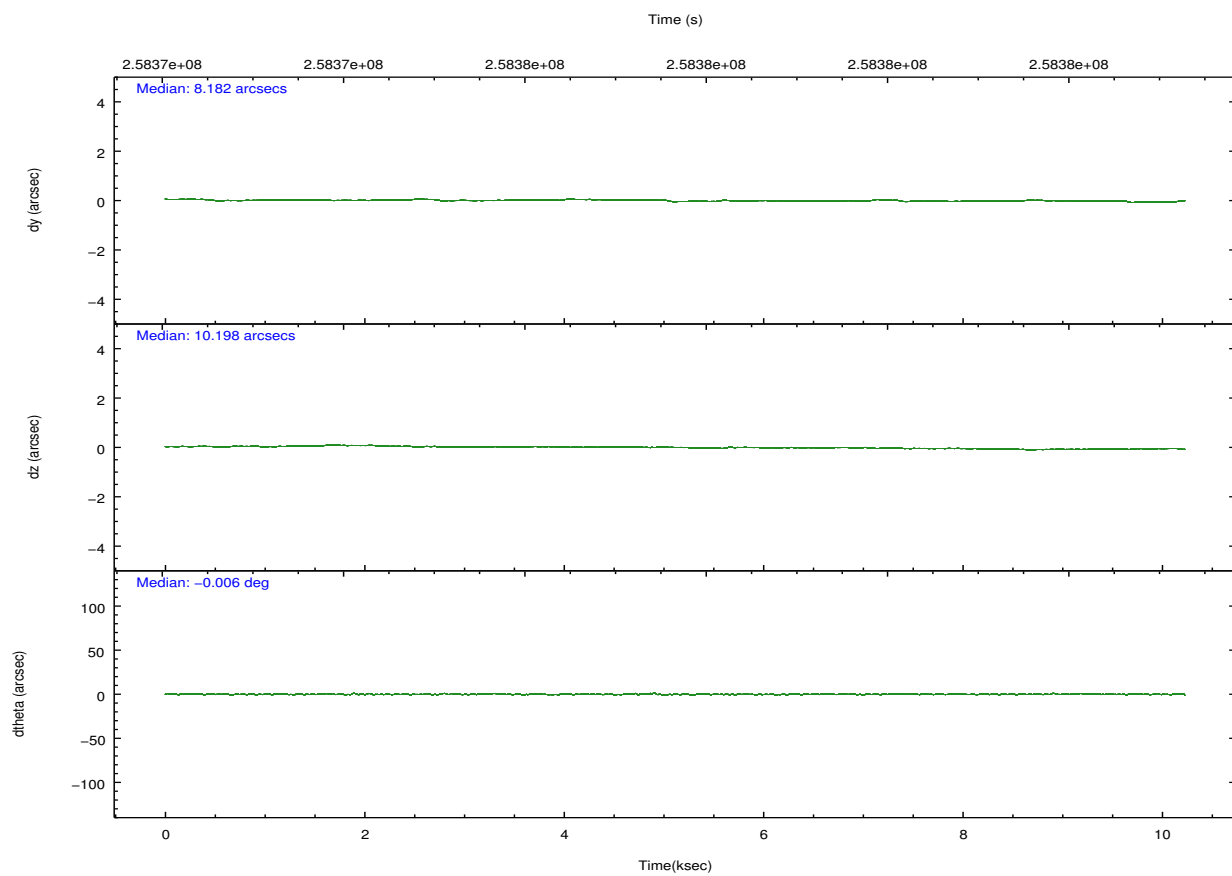
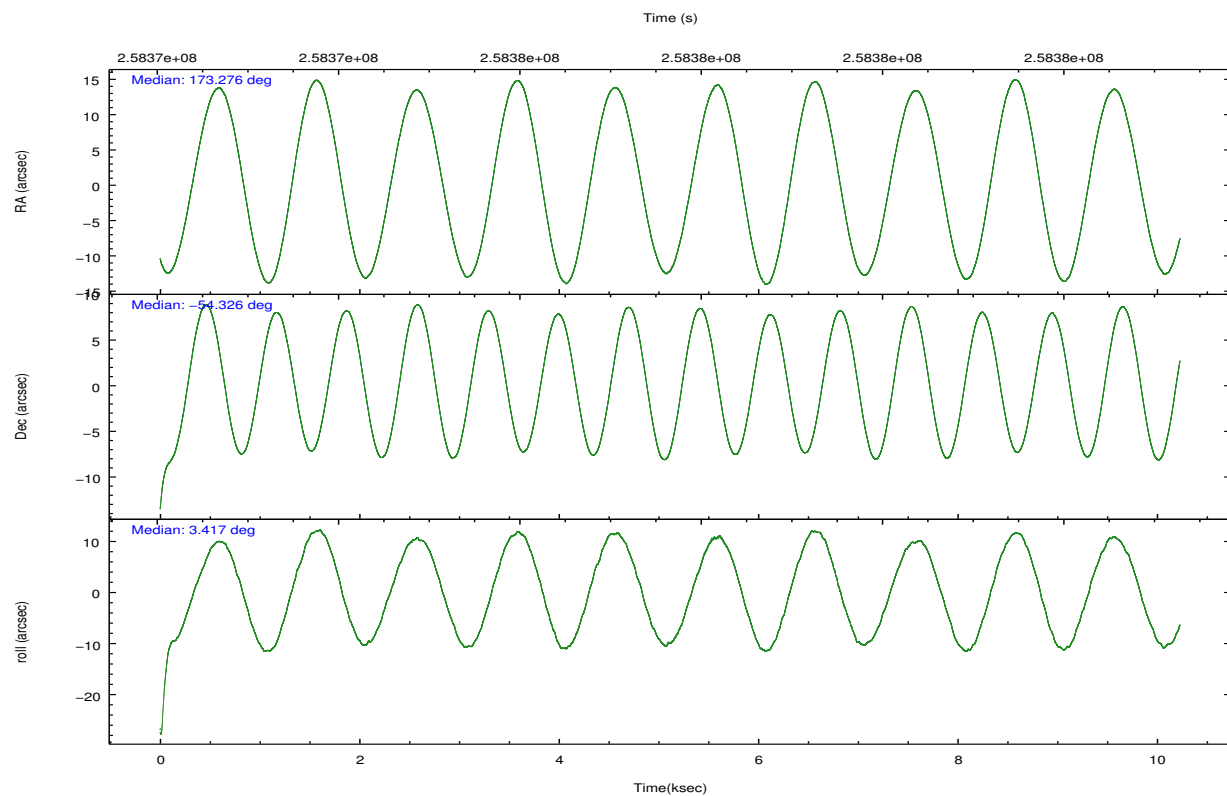
	ccd 2	ccd 3	ccd 5	ccd 6	ccd 7	ccd 8		ccd 2	ccd 3	ccd 5	ccd 6	ccd 7	ccd 8
level 1 events	86449	80764	132757	86854	115774	108970	grade 0 events	4374	4342	8504	4000	4469	7299
rejected events	76525	70862	70524	76674	67689	85955		5%	5%	6%	4%	3%	6%
rejected %	88%	87%	53%	88%	58%	78%	grade 1 events	56	35	168	57	98	78
								0%	0%	0%	0%	0%	0%
							grade 2 events	2210	1918	18450	2197	9621	5178
								2%	2%	13%	2%	8%	4%
							grade 3 events	881	987	2166	980	4144	2436
								1%	1%	1%	1%	3%	2%
							grade 4 events	844	958	2085	950	4161	2263
								0%	1%	1%	1%	3%	2%
							grade 5 events	3259	3725	8945	3984	10963	5138
								3%	4%	6%	4%	9%	4%
							grade 6 events	1626	1699	31068	2059	25718	5896
								1%	2%	23%	2%	22%	5%
							grade 7 events	73199	67100	61371	72627	56600	80682
								84%	83%	46%	83%	48%	74%

2.2 Compared Parameters

Parameter	Planned	Actual	Parameter	Planned	Actual
Instrument	ACIS	ACIS	Obspar format version number	7	7
Detector	ACIS-235678	ACIS-235678	Obspar file type	PREDICTED	ACTUAL
Grating	NONE	NONE	Obspar update status	NONE	UPDATED
Data mode	FAINT	FAINT	Number of optional ACIS chips dropped	0	0
Observation mode	POINTING	POINTING	On-chip summing requested	N	N
[deg] Pointing RA	173.236992	173.2755746312099	Subarray requested	NONE	NONE
[deg] Pointing Dec	-54.341473	-54.32621391214509	Alternating exposures requested	N	N
[deg] Pointing Roll	3.231491	3.419442251105626	[s] Primary exposure time	0.000000	3.2
[mm] SIM focus pos	-0.684267	-0.6828225247311905			
[mm] SIM defocus	0	0.001444936568705701			
[mm] SIM translation stage pos	-190.132523	-190.1425803651734			
[mm] SIM translation stage offset	0	0.01005778216563158			
[s] Observation start time (MET)	258372911.184000	258371856.61528			
Observation start date	2006-03-10T10:14:06	2006-03-10T09:57:36			
[s] Observation end time (MET)	258382768.184000	258382989.65329			
Observation end date	2006-03-10T12:58:23	2006-03-10T13:03:09			
Read mode	TIMED	TIMED			

2.3 Aspect



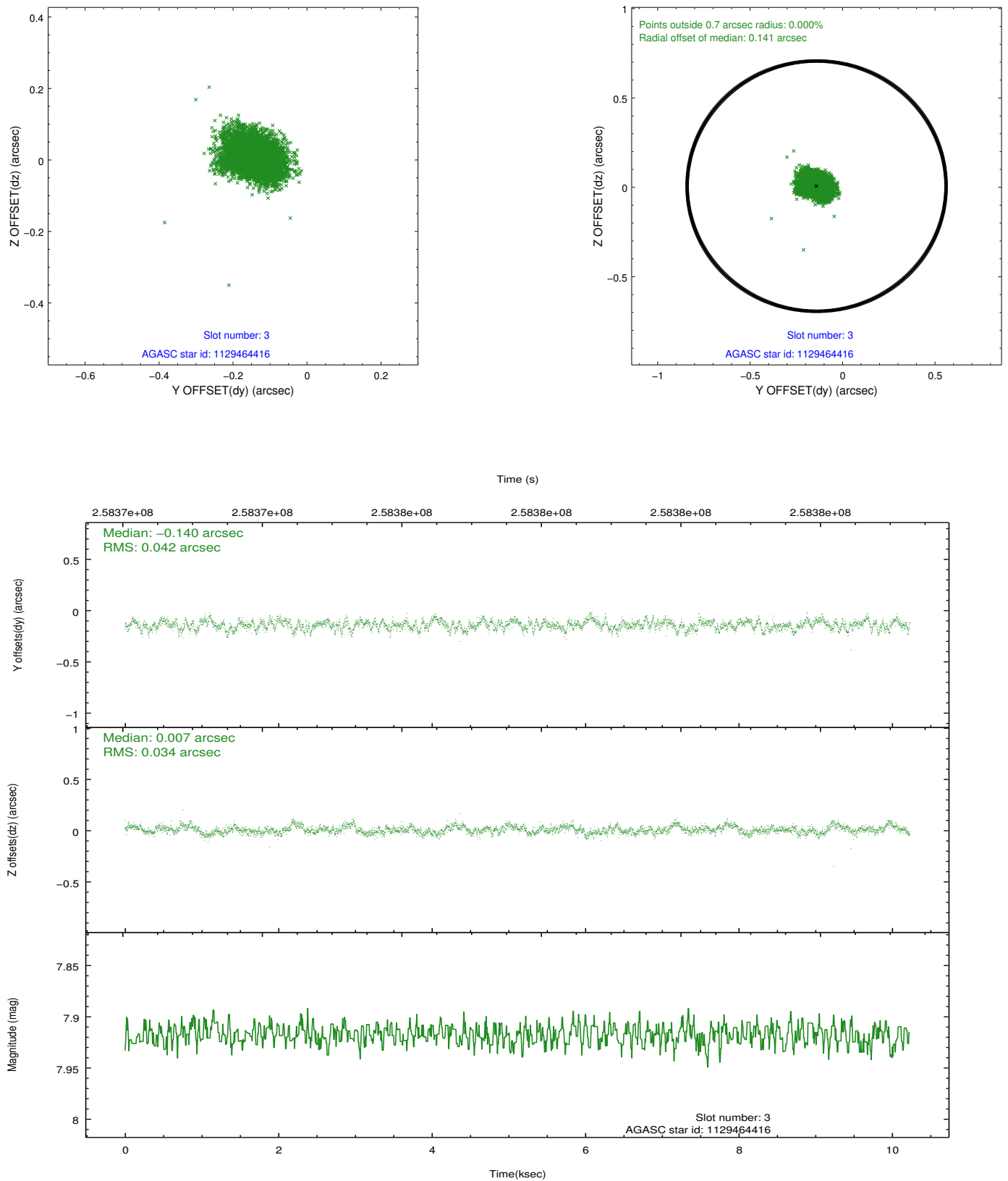


Slot Statistics

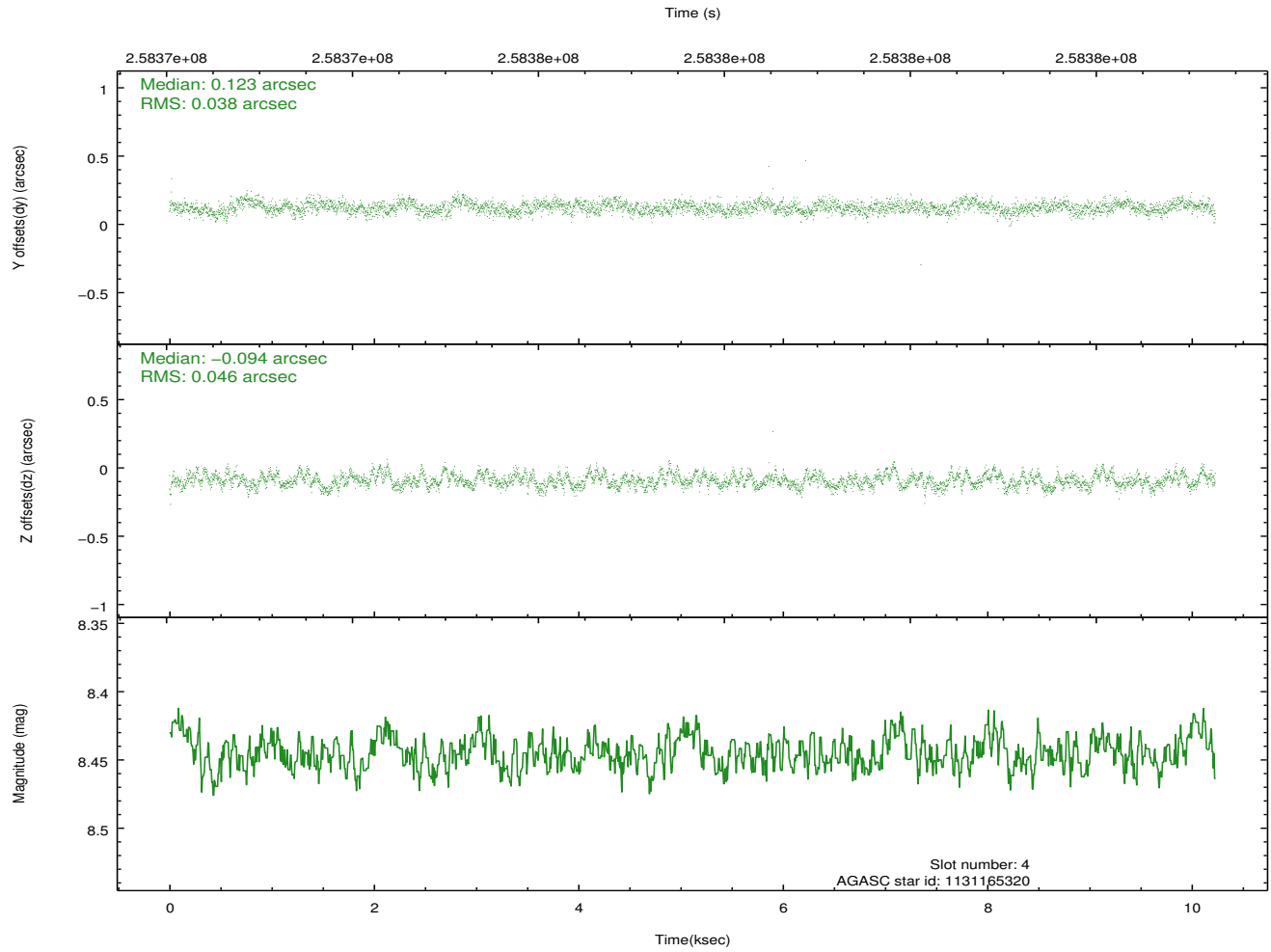
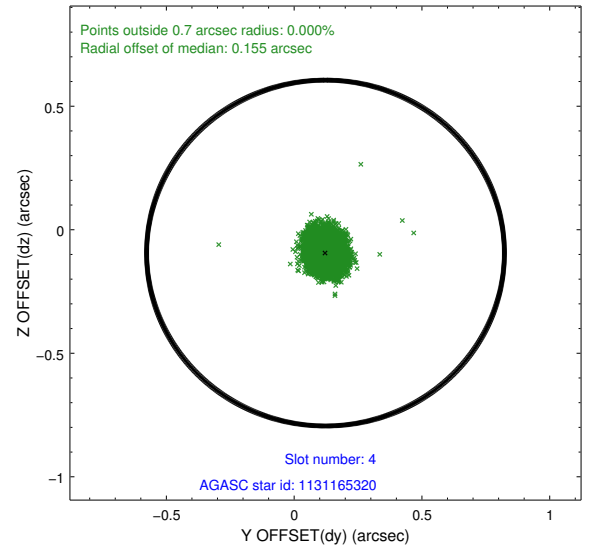
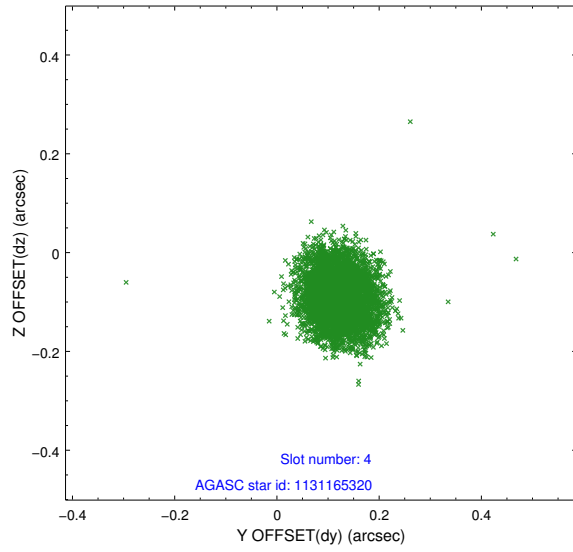
slot	status	id	mag	n_pts	med_dy	med_dz	dr1	dr2	ra	dec	mean_y	mean_z
0	FID	ACIS-S-2	7.11	2495	-0.046	-0.034	0.007	0.011	0.000000	0.000000	-760.96	-1731.45
1	FID	ACIS-S-4	7.20	2495	0.140	0.031	0.005	0.009	0.000000	0.000000	2152.21	176.65
2	FID	ACIS-S-5	7.23	2496	-0.126	0.012	0.007	0.011	0.000000	0.000000	-1813.27	170.78
3	GUIDE	1129464416	7.92	4990	-0.140	0.007	0.057	0.095	172.164580	-54.169318	-2222.42	729.36
4	GUIDE	1131165320	8.45	4991	0.123	-0.094	0.063	0.101	174.088421	-54.252788	1804.81	207.67
5	GUIDE	1129463800	8.68	4988	-0.047	-0.014	0.070	0.114	172.232476	-53.716699	-2010.41	2351.49
6	GUIDE	1129981608	7.16	4991	0.089	0.100	0.063	0.095	172.159412	-54.883579	-2339.11	-1839.10
7	GUIDE	1131164376	8.79	4986	-0.022	0.001	0.068	0.108	173.638106	-53.881005	942.73	1604.77

2.4 Star Slots

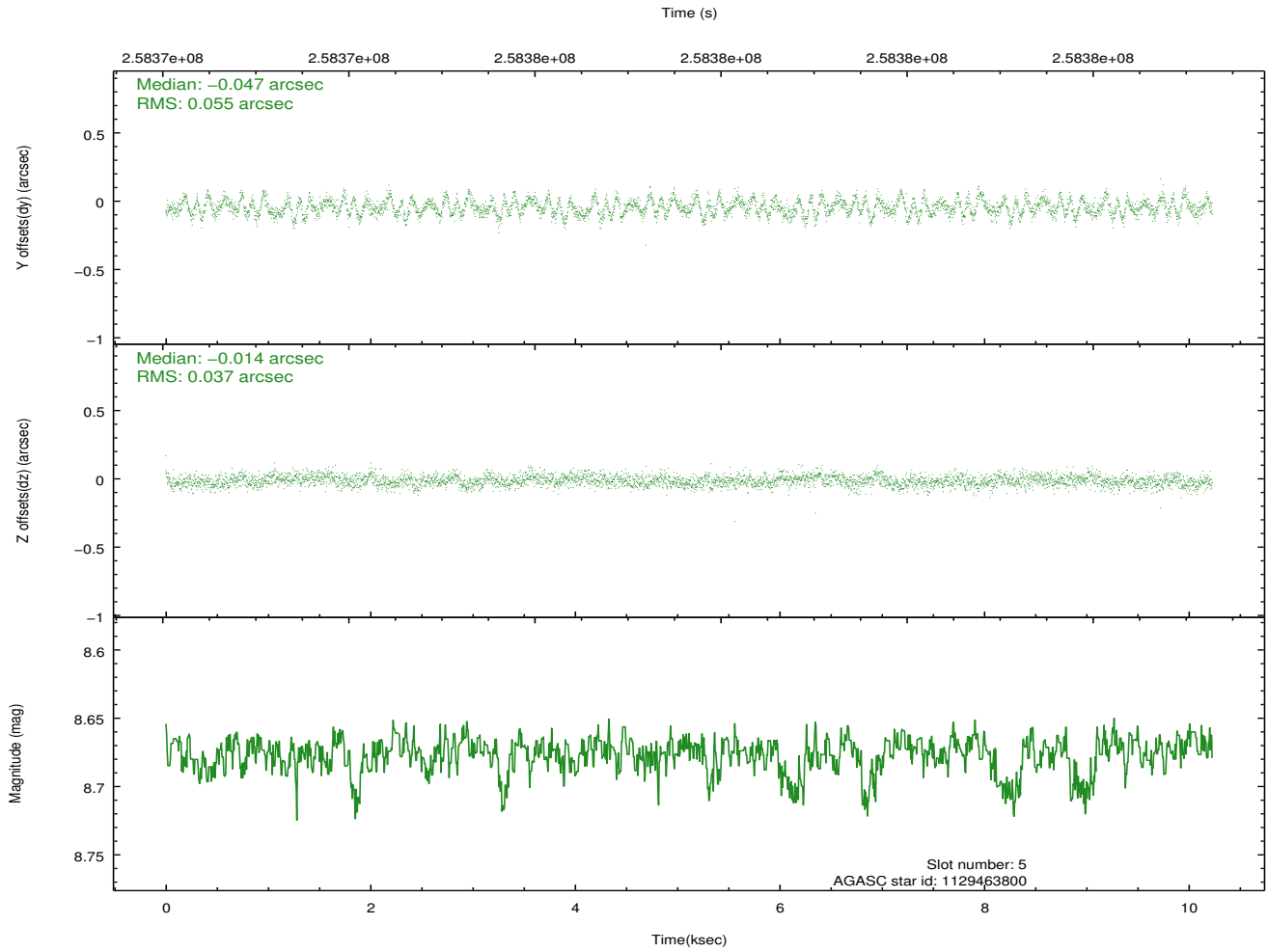
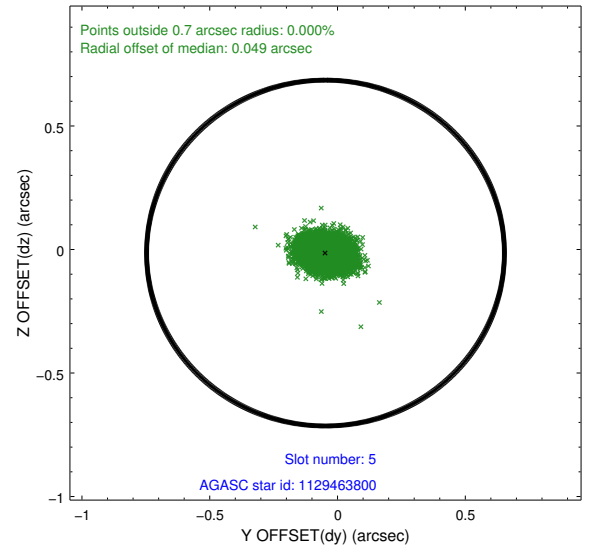
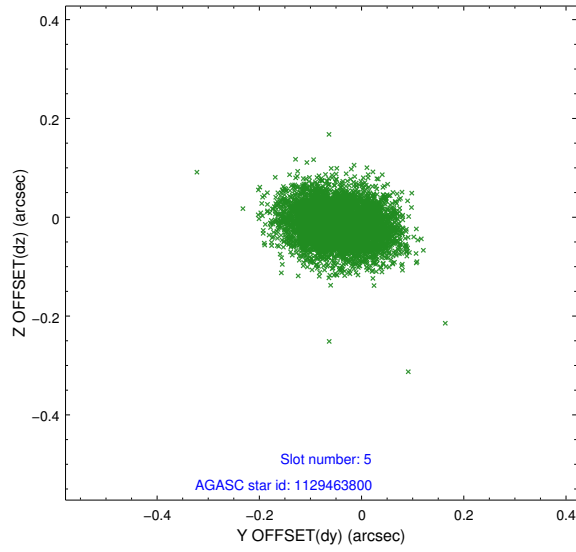
2.4.1 Slot 3



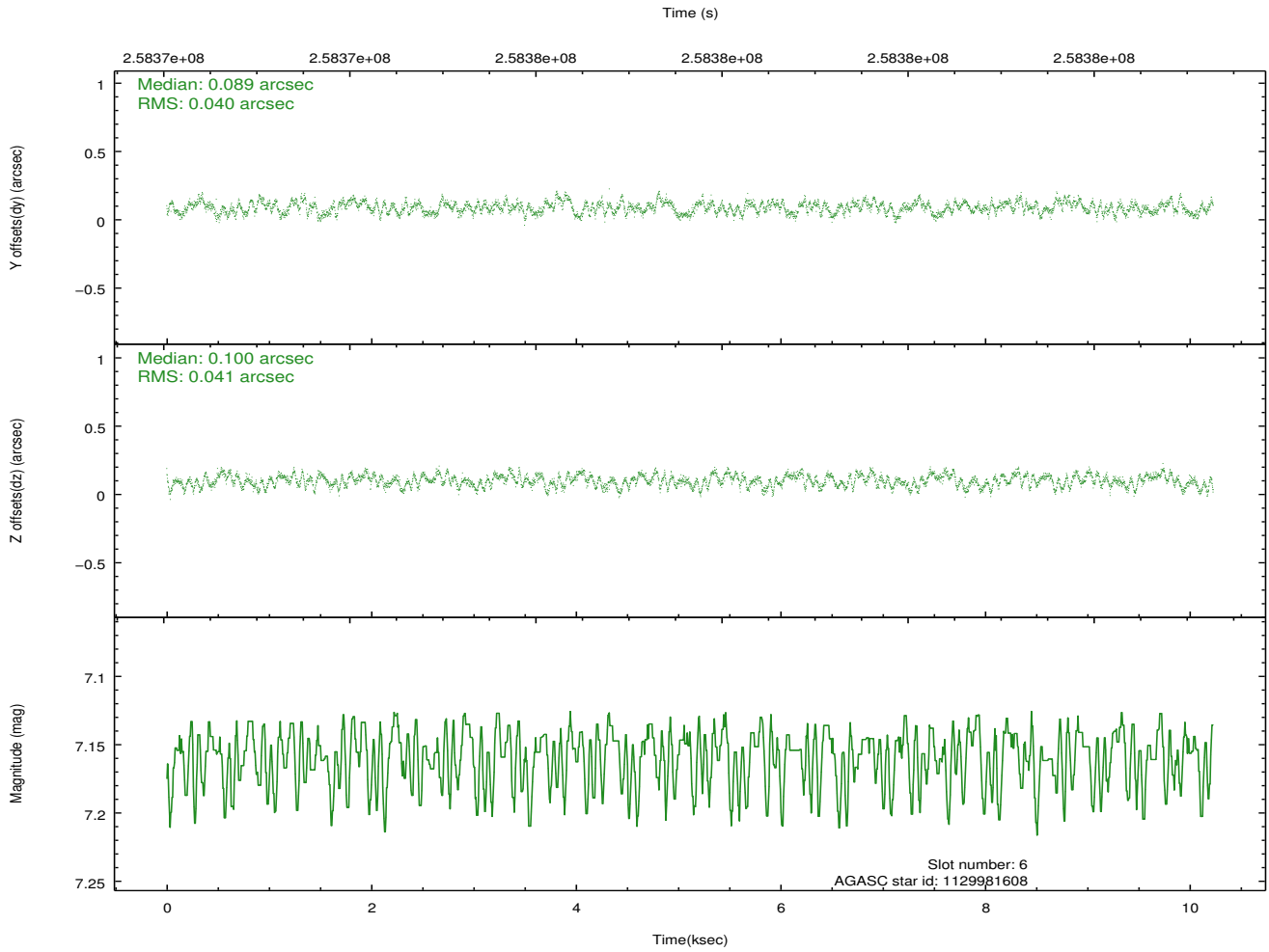
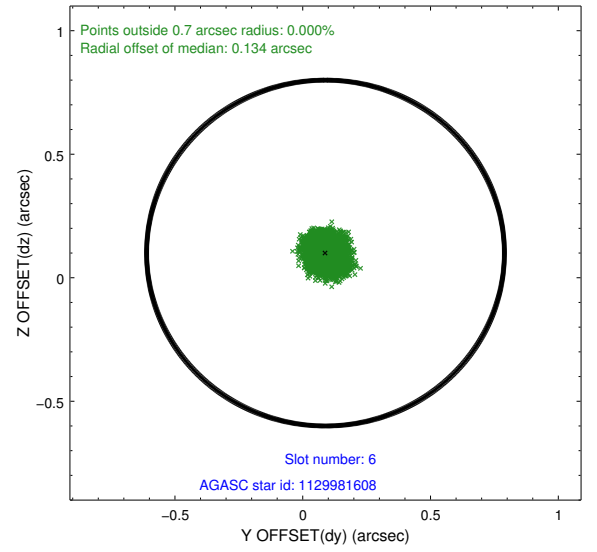
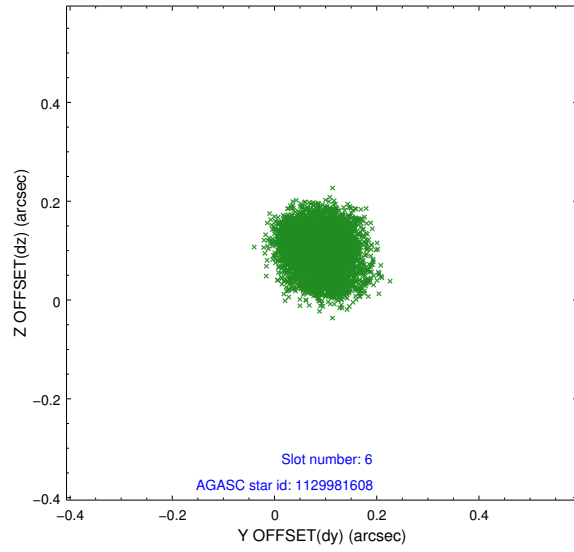
2.4.2 Slot 4



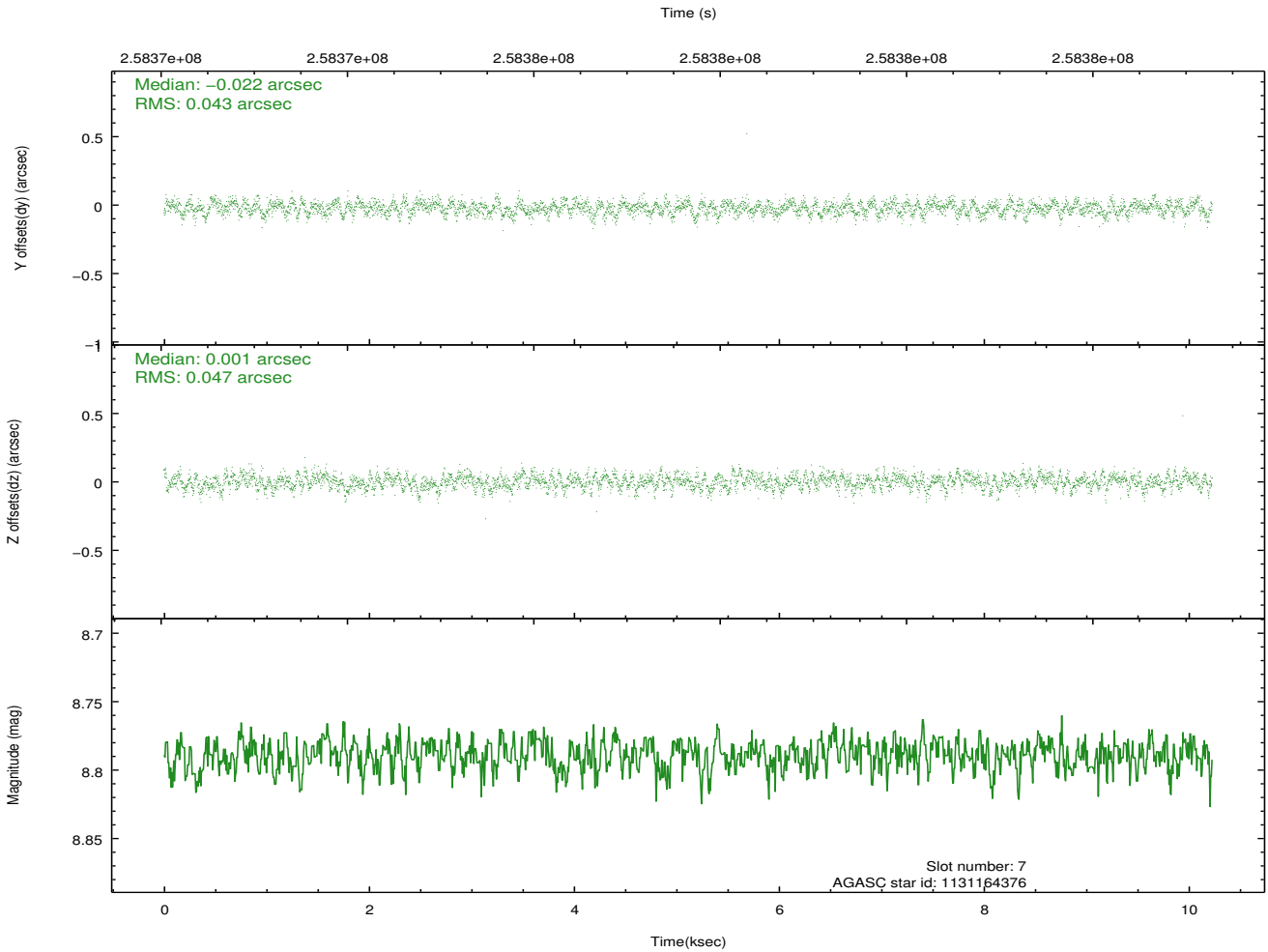
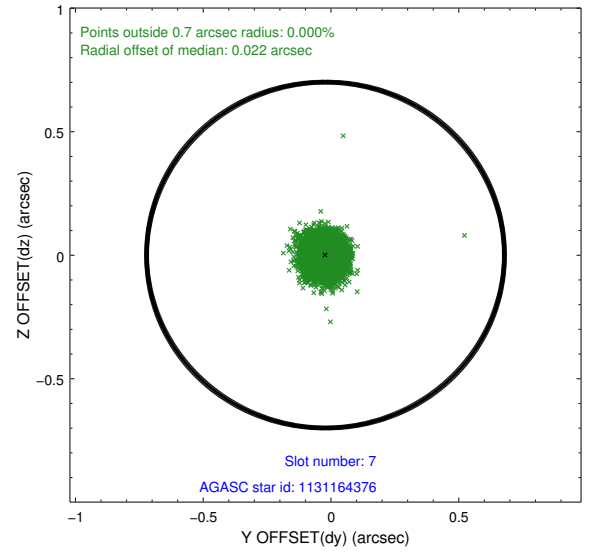
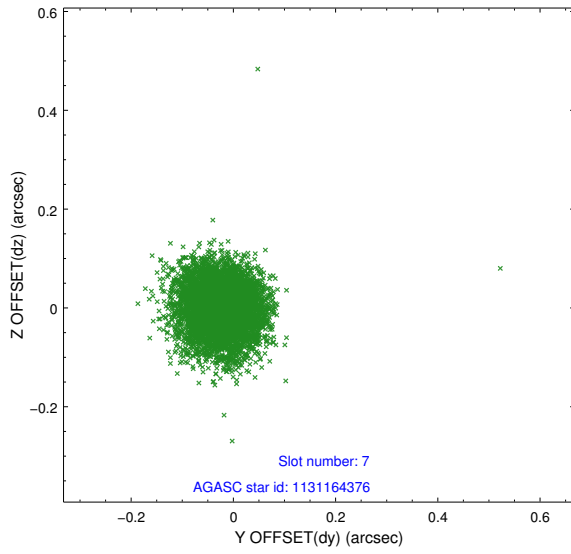
2.4.3 Slot 5



2.4.4 Slot 6

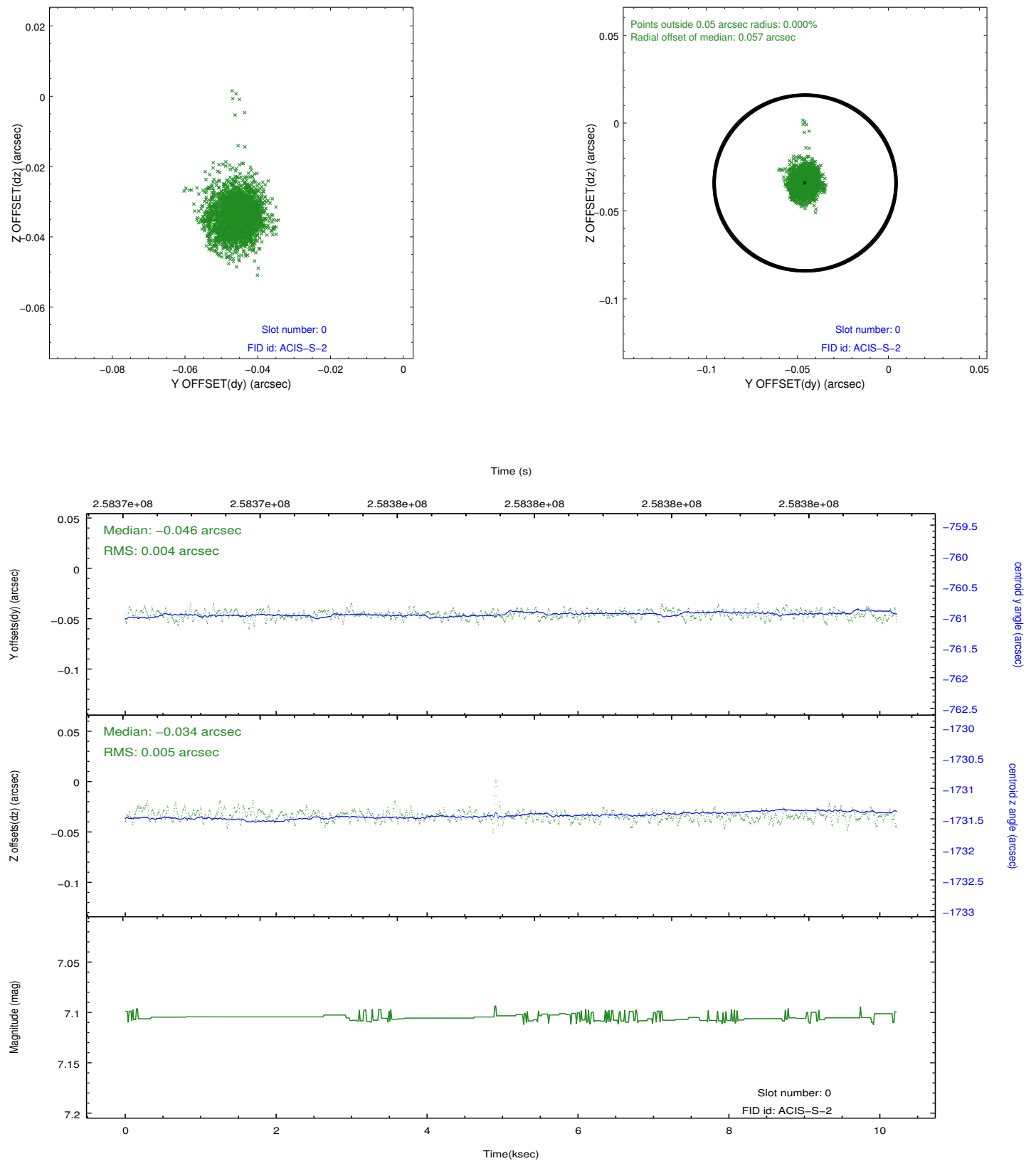


2.4.5 Slot 7

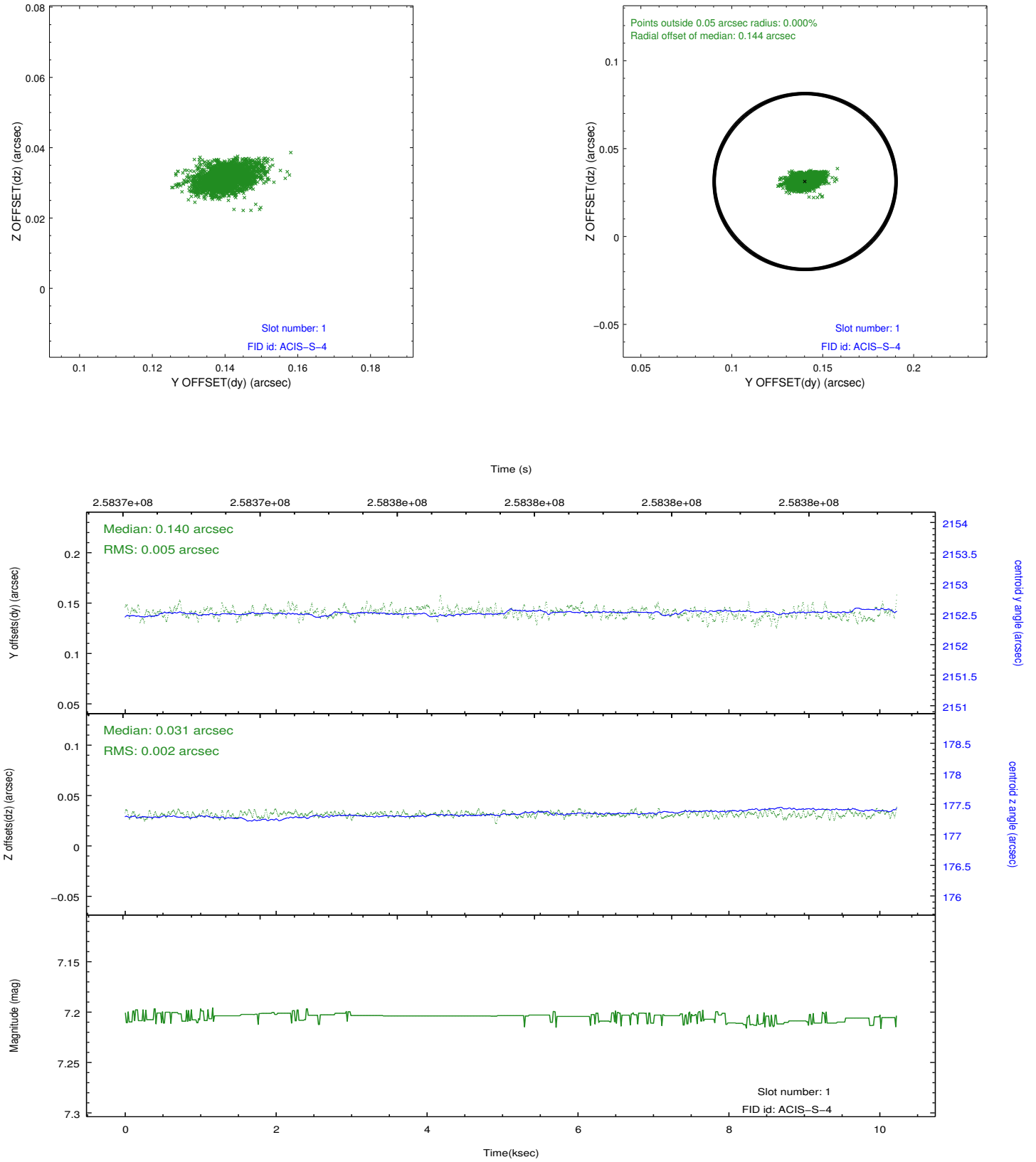


2.5 FID Slots

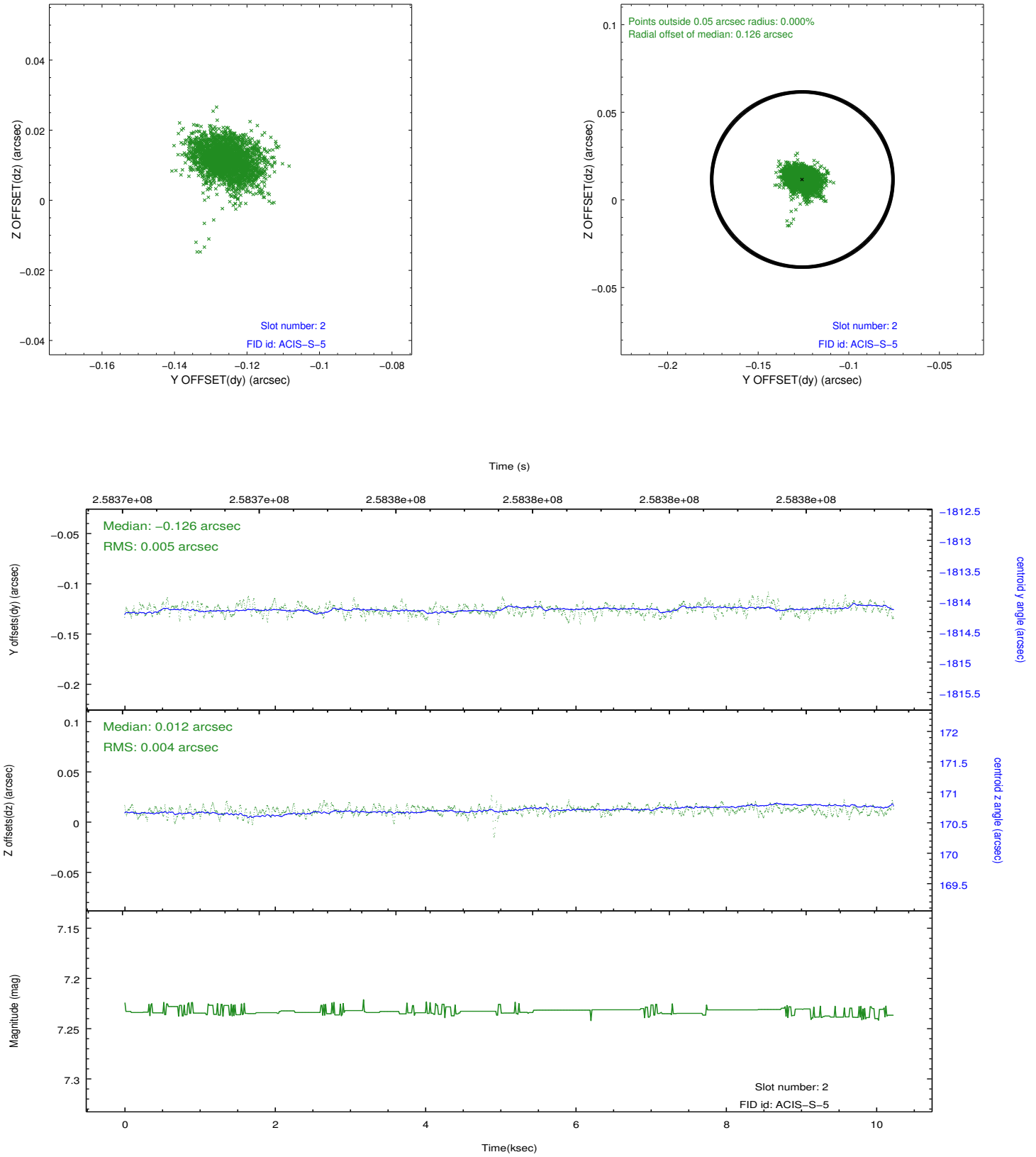
2.5.1 Slot 0



2.5.2 Slot 1



2.5.3 Slot 2



A Summary

A.1 Status

V&V Scientist	Beth Sundheim
V&V Date (YYYY-MM-DD)	2012.03.28
V&V Edition	1
V&V Disposition and Status	OK
V&V Charge Time	9.81119996

A.2 Comments

Joint proposal with HST.