

# V&V Reference Report

## L2 ASCDS Version : 7.6.7.1

Observation 6335 - L2 Version 002  
Chandra X-Ray Center

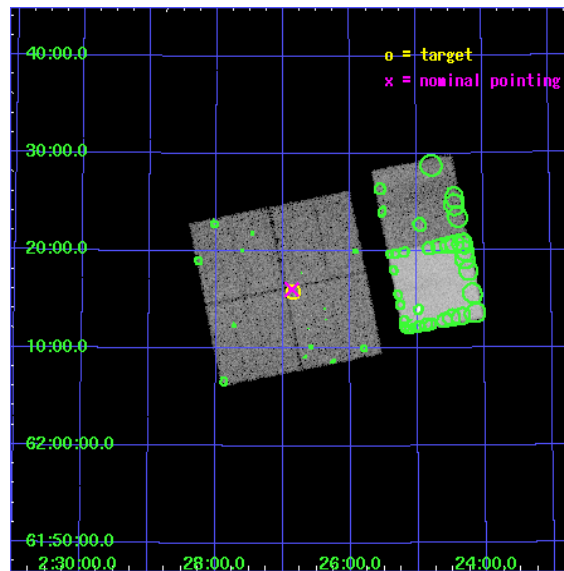
L2 Processing Date : Mar 11 2006

## Contents

<b>1</b>	<b>Front</b>	<b>2</b>
<b>2</b>	<b>OBI</b>	<b>3</b>
2.1	OBI . . . . .	3
2.1.1	Images . . . . .	3
2.1.2	Bias . . . . .	3
2.1.3	Parameters . . . . .	4
2.1.4	Events . . . . .	4
2.2	Compared Parameters . . . . .	5
2.3	Aspect . . . . .	6
2.4	Star Slots . . . . .	9
2.4.1	Slot 3 . . . . .	9
2.4.2	Slot 4 . . . . .	10
2.4.3	Slot 5 . . . . .	11
2.4.4	Slot 6 . . . . .	12
2.4.5	Slot 7 . . . . .	13
2.5	FID Slots . . . . .	14
2.5.1	Slot 0 . . . . .	14
2.5.2	Slot 1 . . . . .	15
2.5.3	Slot 2 . . . . .	16
<b>3</b>	<b>Point Sources</b>	<b>17</b>
<b>A</b>	<b>Summary</b>	<b>18</b>
A.1	Status . . . . .	18
A.2	Comments . . . . .	18

# 1 Front

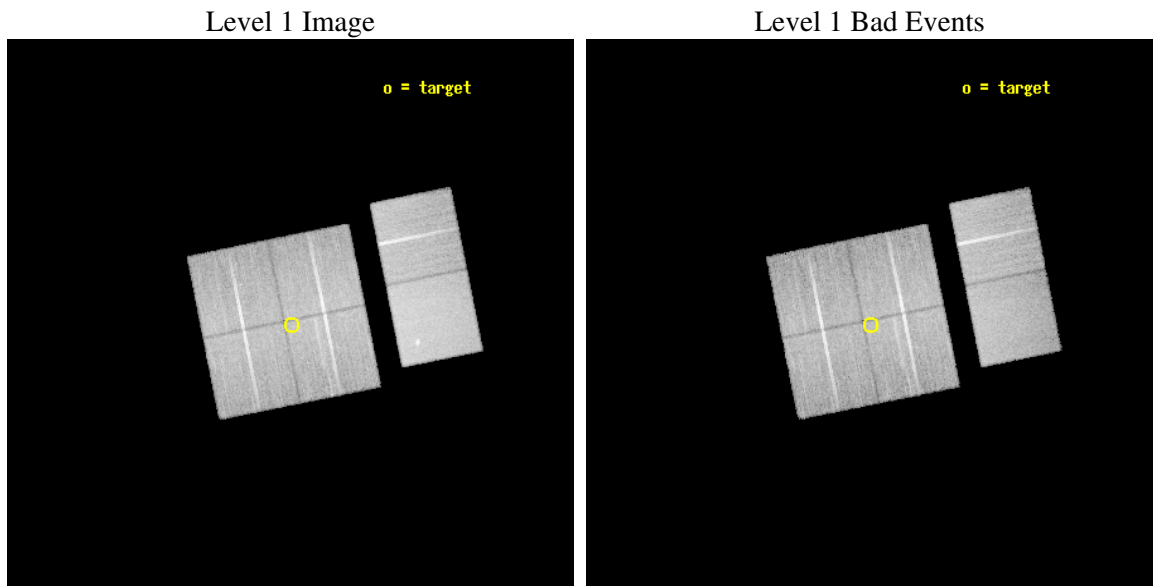
seq_num	900391
obs_id	6335
title	Massive Star Life, Death, and Rebirth in the Perseus Arm
observer	Dr. Leisa Townsley
object	W3 North
dtcycle	0
cycle	P
ra_targ	36.711667
dec_targ	62.264444
ra_nom	36.717311825892
dec_nom	62.268285348381
roll_nom	78.624504822214
revision	2
ontime	21267.199920774
livetime	20997.901829806
ontime0	21267.199920774
ontime1	21267.199920774
ontime2	21263.95895049
ontime3	21267.199920774
ontime6	21267.199920774
ontime7	21267.199920774
l2events	170284



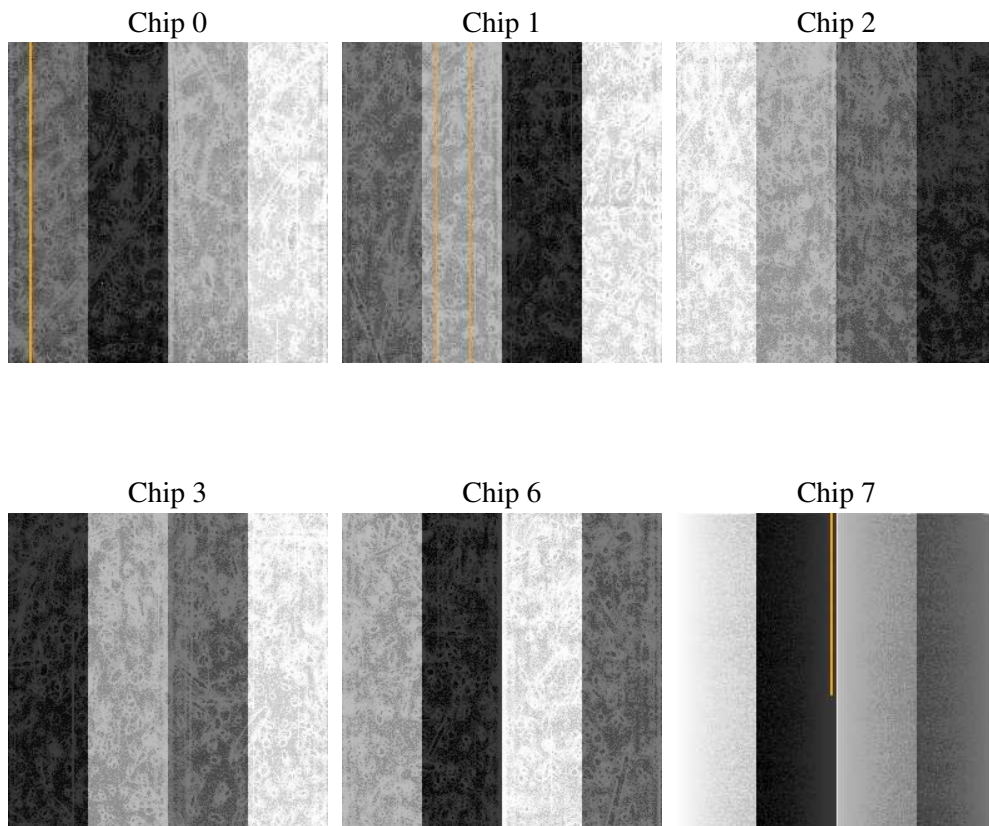
## 2 OBI

### 2.1 OBI

#### 2.1.1 Images



#### 2.1.2 Bias



### 2.1.3 Parameters

obi_num	0
ascdsver	7.6.7.1
caldsver	3.2.1
date	2006-03-12T01:12:39
revision	2

sched_exp_time	21307.345000
ontime	21270.687042803
ontime0	21270.687042803
ontime1	21270.687042803
ontime2	21267.446072519
ontime3	21270.687042803
ontime6	21270.687042803
ontime7	21270.687042803
l1events	1020017

### 2.1.4 Events

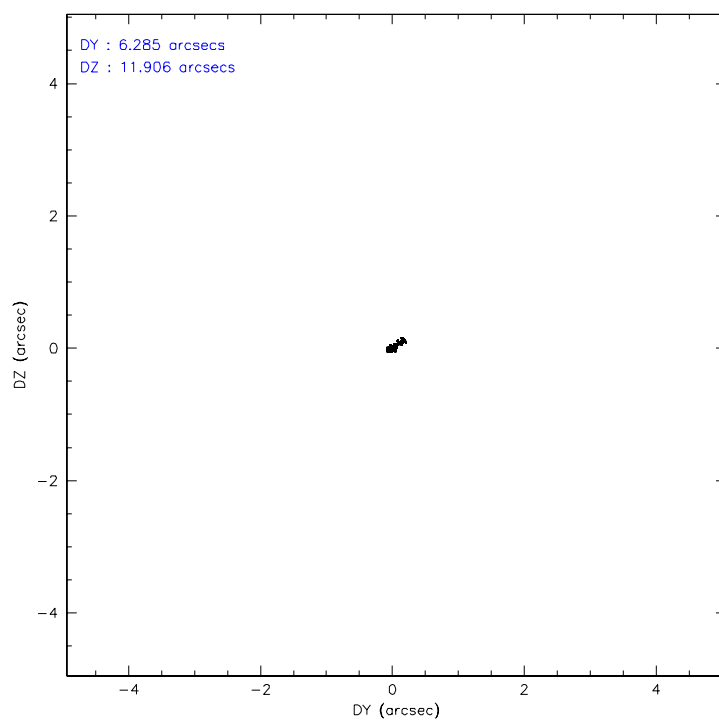
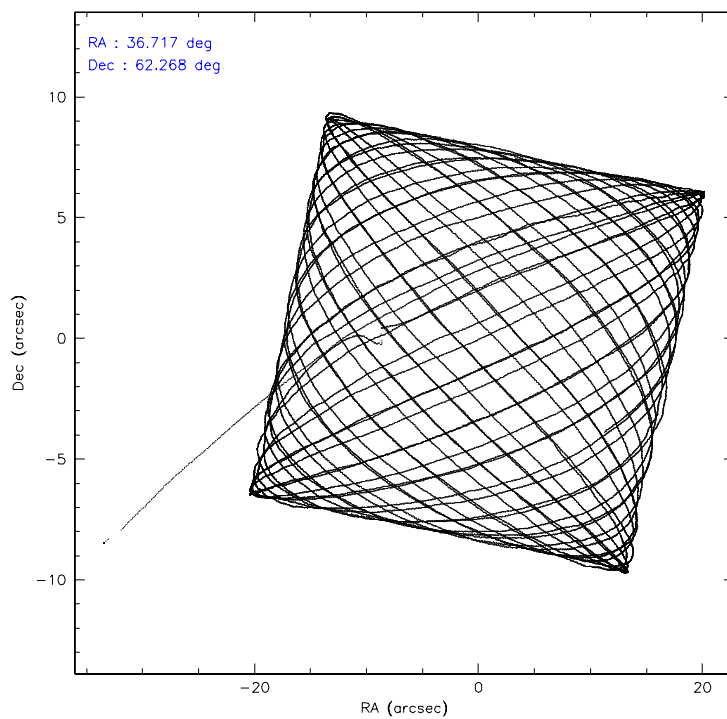
	ccd 0	ccd 1	ccd 2	ccd 3	ccd 6	ccd 7
level 1 events	148641	150637	159152	162864	171980	226743
rejected events	128480	130032	139748	143092	152400	140142
rejected %	86%	86%	87%	87%	88%	61%

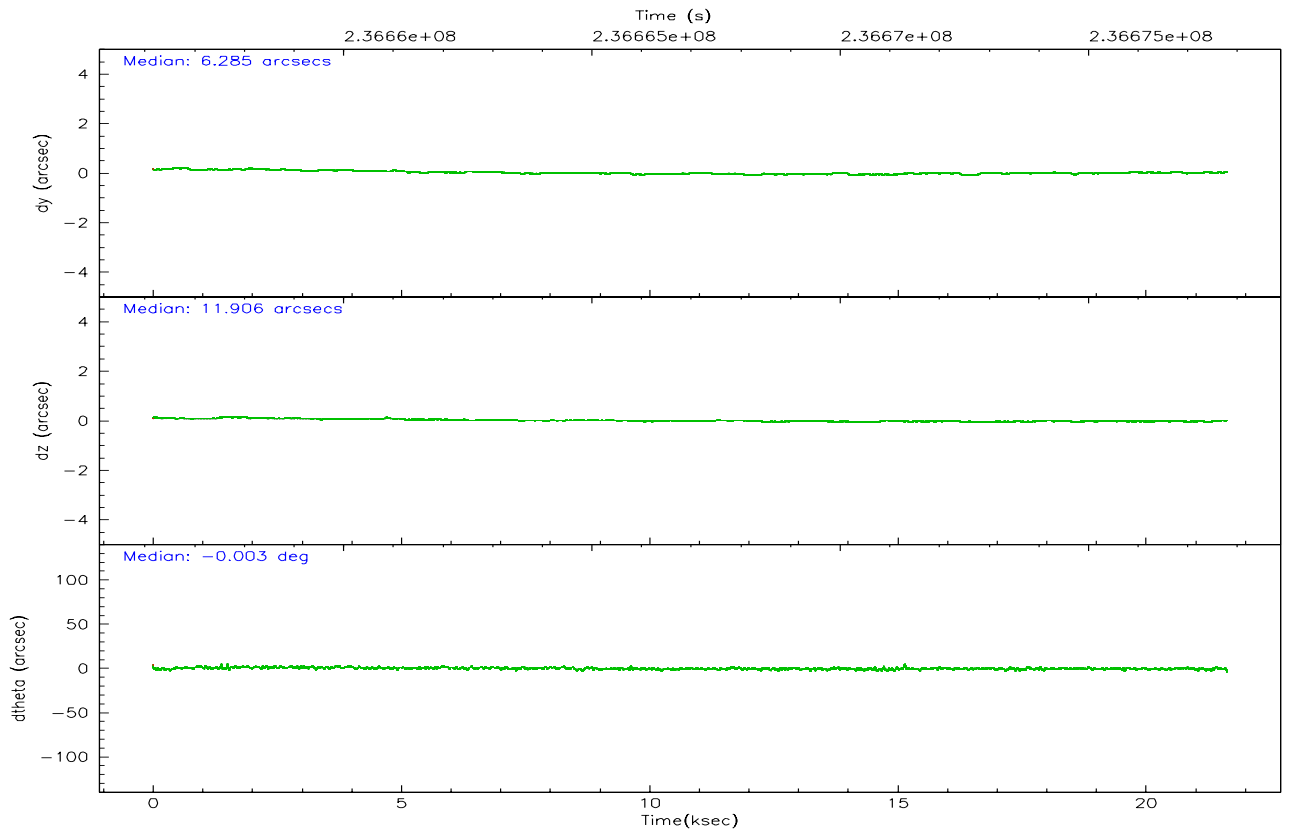
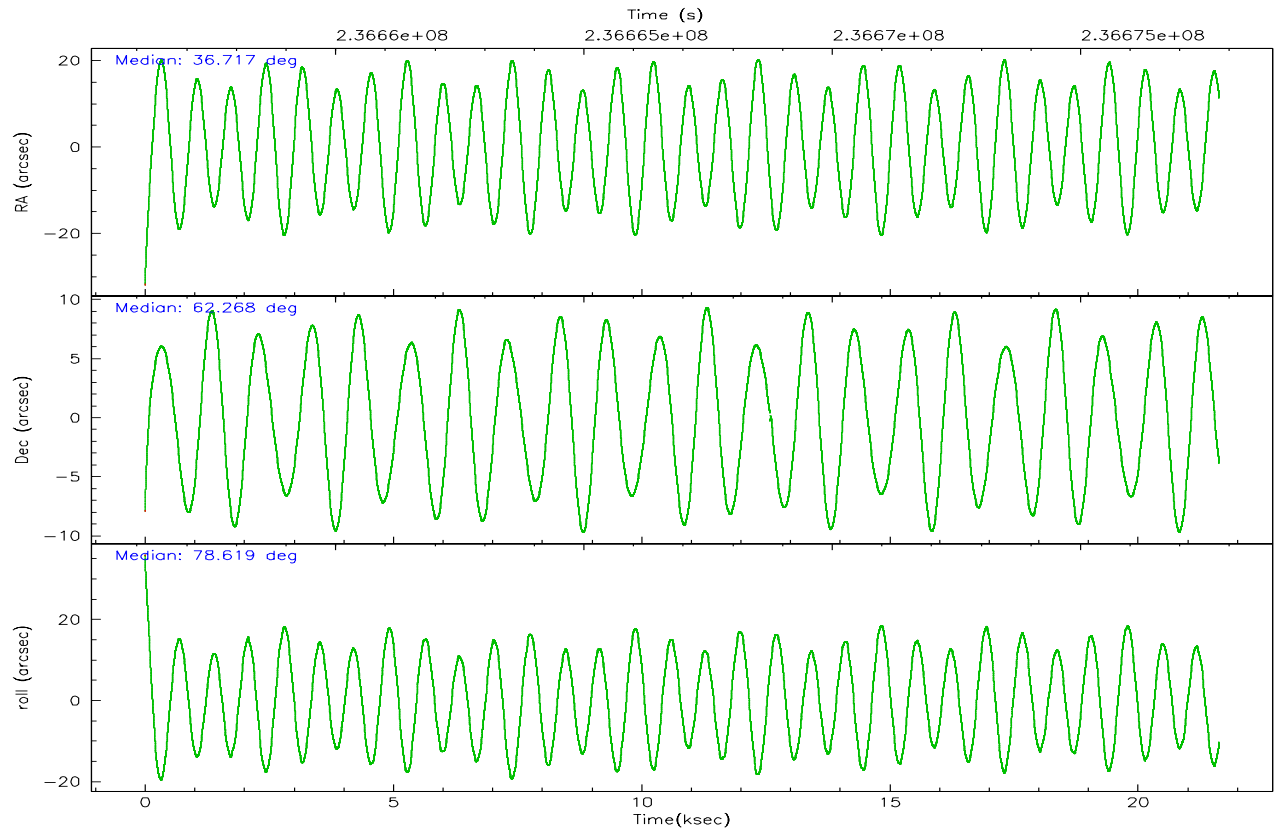
	ccd 0	ccd 1	ccd 2	ccd 3	ccd 6	ccd 7
grade 0 events	8514	7941	8581	8705	7544	4851
	5%	5%	5%	5%	4%	2%
grade 1 events	104	88	90	119	90	151
	0%	0%	0%	0%	0%	0%
grade 2 events	4339	4673	3992	3825	4218	21752
	2%	3%	2%	2%	2%	9%
grade 3 events	2005	1985	1838	1915	1920	4371
	1%	1%	1%	1%	1%	1%
grade 4 events	1832	2034	1849	1934	1926	4193
	1%	1%	1%	1%	1%	1%
grade 5 events	6649	7086	6320	7583	7942	14847
	4%	4%	3%	4%	4%	6%
grade 6 events	3475	3972	3150	3395	3973	51449
	2%	2%	1%	2%	2%	22%
grade 7 events	121723	122858	133332	135388	144367	125129
	81%	81%	83%	83%	83%	55%

## 2.2 Compared Parameters

Parameter	Planned	Actual	Parameter	Planned	Actual
Instrument	ACIS	ACIS	Obspar format version number	6	6
Detector	ACIS-012367	ACIS-012367	Obspar file type	PREDICTED	ACTUAL
Grating	NONE	NONE	Obspar update status	NONE	UPDATED
Data mode	VFAINT	VFAINT	On-chip summing requested	N	N
Observation mode	POINTING	POINTING	Subarray requested	NONE	NONE
Pointing RA	36.736295	36.71731182589185	Alternating exposures requested	N	N
Pointing Dec	62.242350	62.26828534838074	Primary exposure time	0.000000	3.2
Pointing Roll	78.399020	78.62450482221351			
SIM focus pos (mm)	-0.782348	-0.7809083437167272			
SIM defocus (mm)	0	0.001439871863259334			
SIM translation stage pos (mm)	-233.592463	-233.5874344608287			
SIM translation stage offset (mm)	0	-0.005018542100998502			
Observation start time	236656486.184000	236655454.80118			
Observation start date	2005-07-02T01:53:42	2005-07-02T01:37:34			
Observation end time	236677793.184000	236678025.30221			
Observation end date	2005-07-02T07:48:49	2005-07-02T07:53:45			
Read mode	TIMED	TIMED			

## 2.3 Aspect





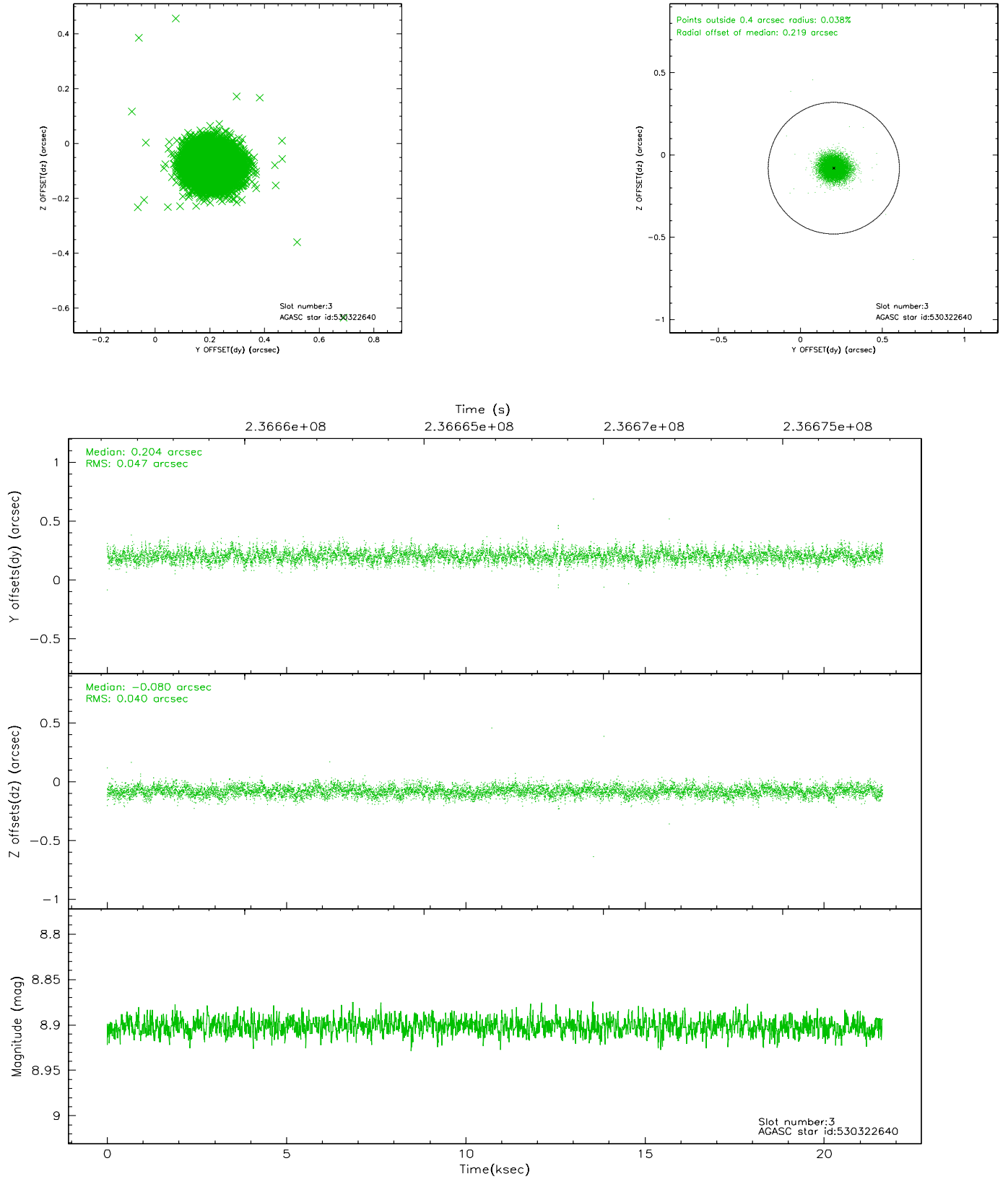
### Slot Statistics

slot	status	id	mag	n_pts	med_dy	med_dz	dr1	dr2	ra	dec	mean_y	mean_z
0	FID	ACIS-I-1	7.24	5278	-0.049	-0.004	0.012	0.021	0.000000	0.000000	933.36	-835.43
1	FID	ACIS-I-2	7.14	5276	-0.095	-0.020	0.008	0.014	0.000000	0.000000	-760.69	-842.00
2	FID	ACIS-I-4	7.17	5277	0.046	0.092	0.007	0.012	0.000000	0.000000	2153.23	1064.41
3	GUIDE	530322640	8.90	10552	0.204	-0.080	0.064	0.104	35.878914	61.773652	-1936.89	1092.44
4	GUIDE	530850752	7.40	10556	-0.238	-0.026	0.050	0.082	36.960051	62.890600	2359.99	110.20
5	GUIDE	530862896	8.90	10550	0.002	-0.071	0.073	0.117	35.753276	62.216485	-410.68	1599.73
6	GUIDE	530863576	9.23	10545	-0.087	0.188	0.086	0.137	38.002549	62.242334	447.37	-2074.68
7	GUIDE	530327200	8.69	10551	0.117	-0.008	0.060	0.097	37.247178	61.519674	-2368.39	-1381.77

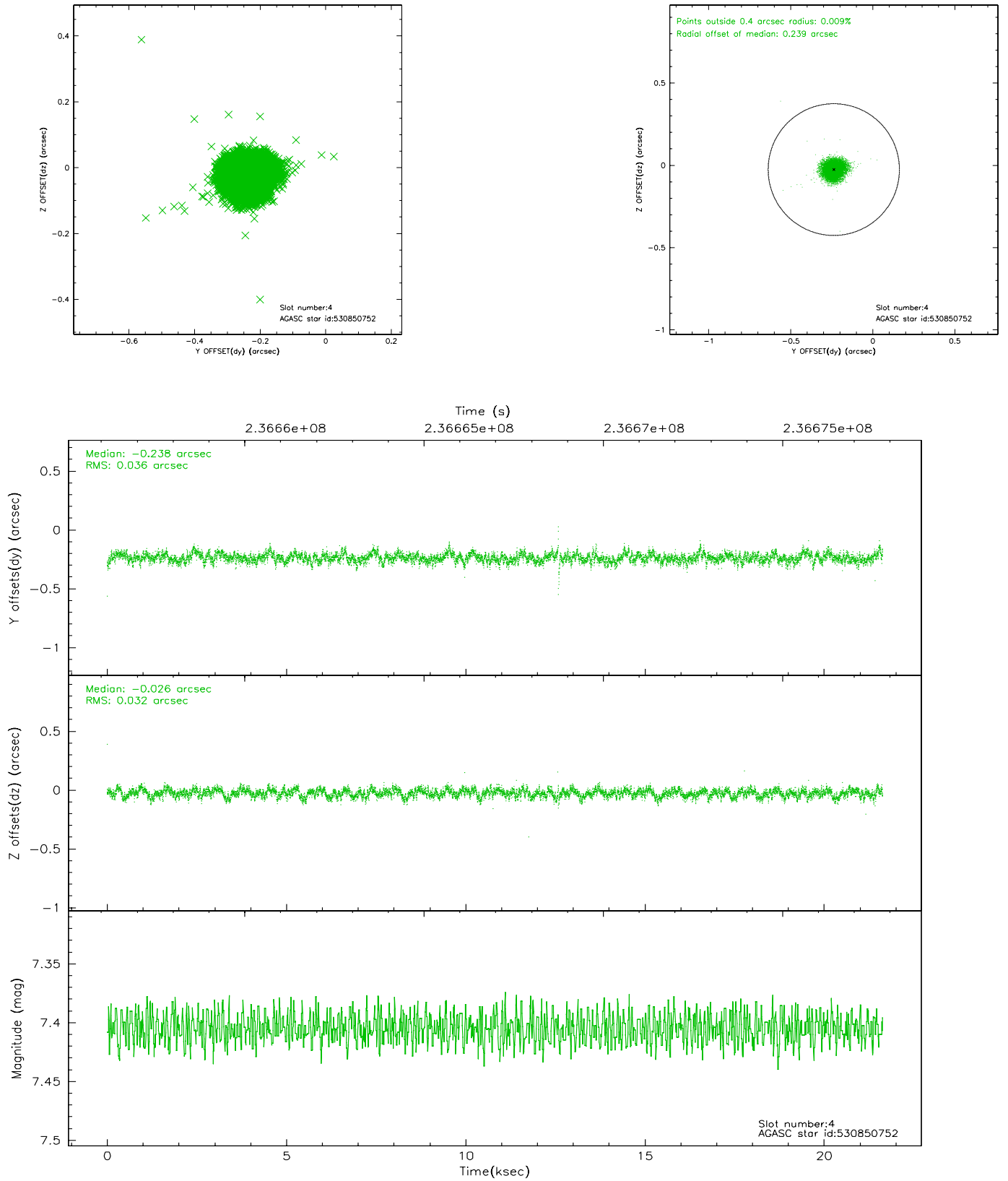


## 2.4 Star Slots

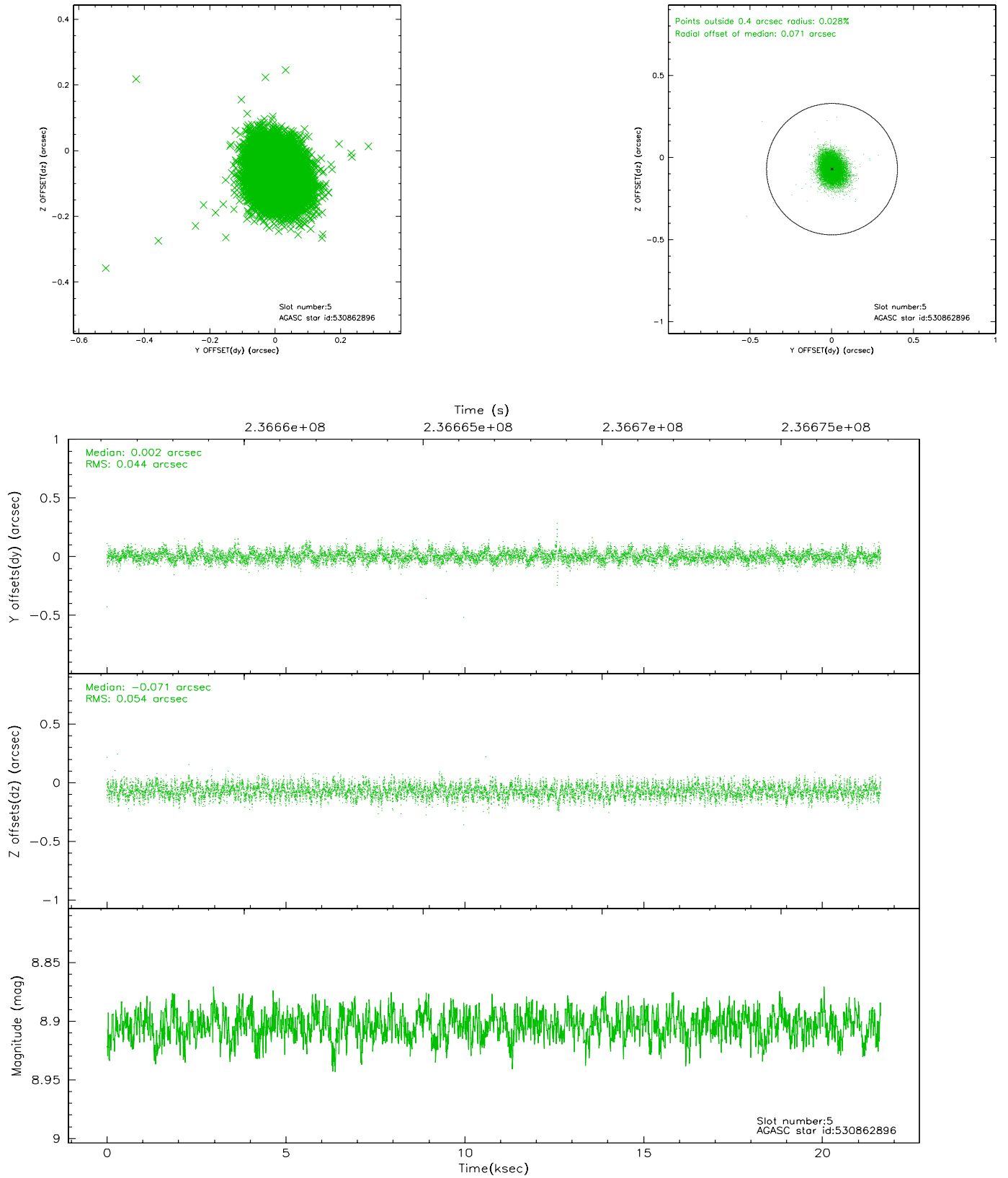
### 2.4.1 Slot 3



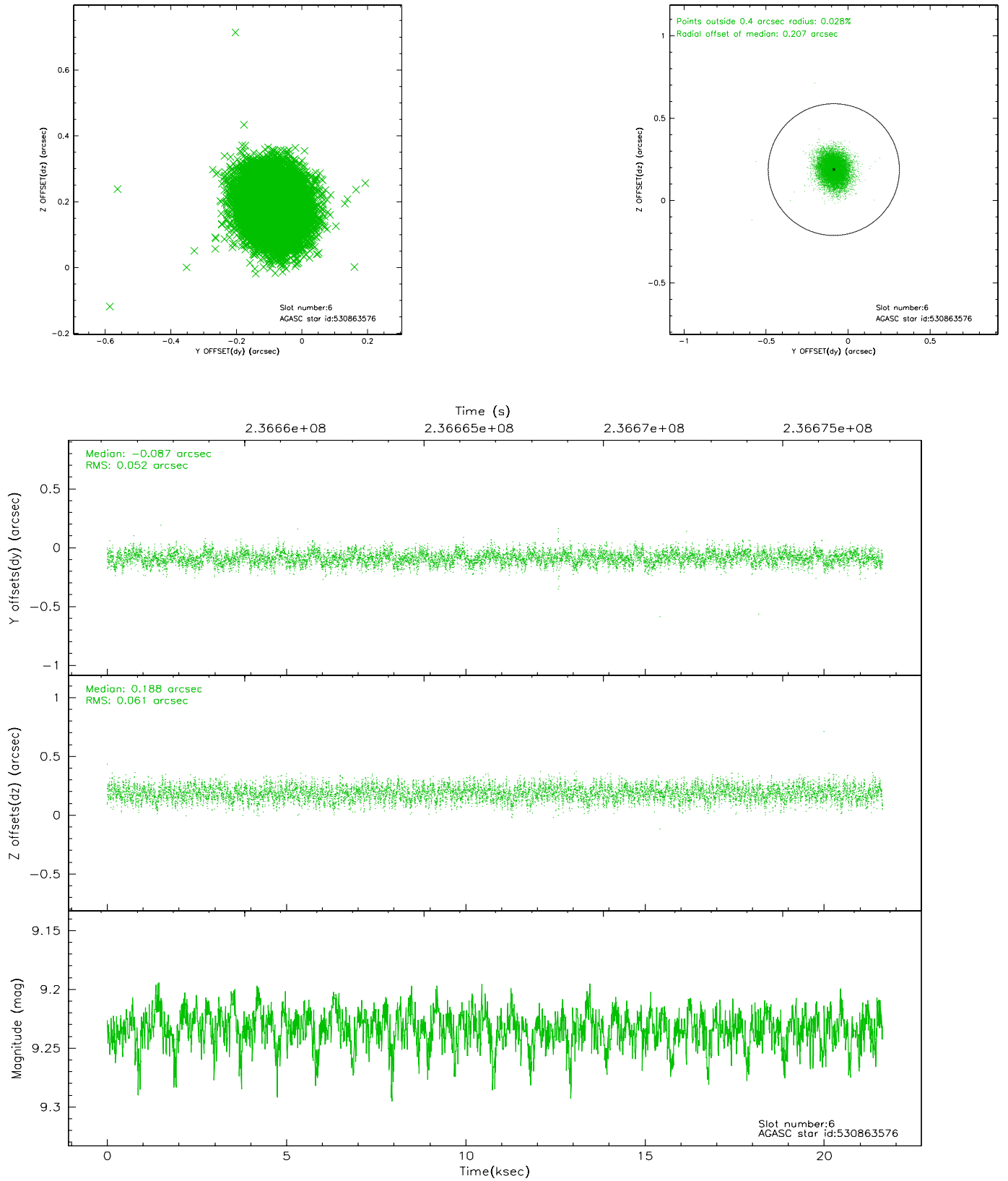
## 2.4.2 Slot 4



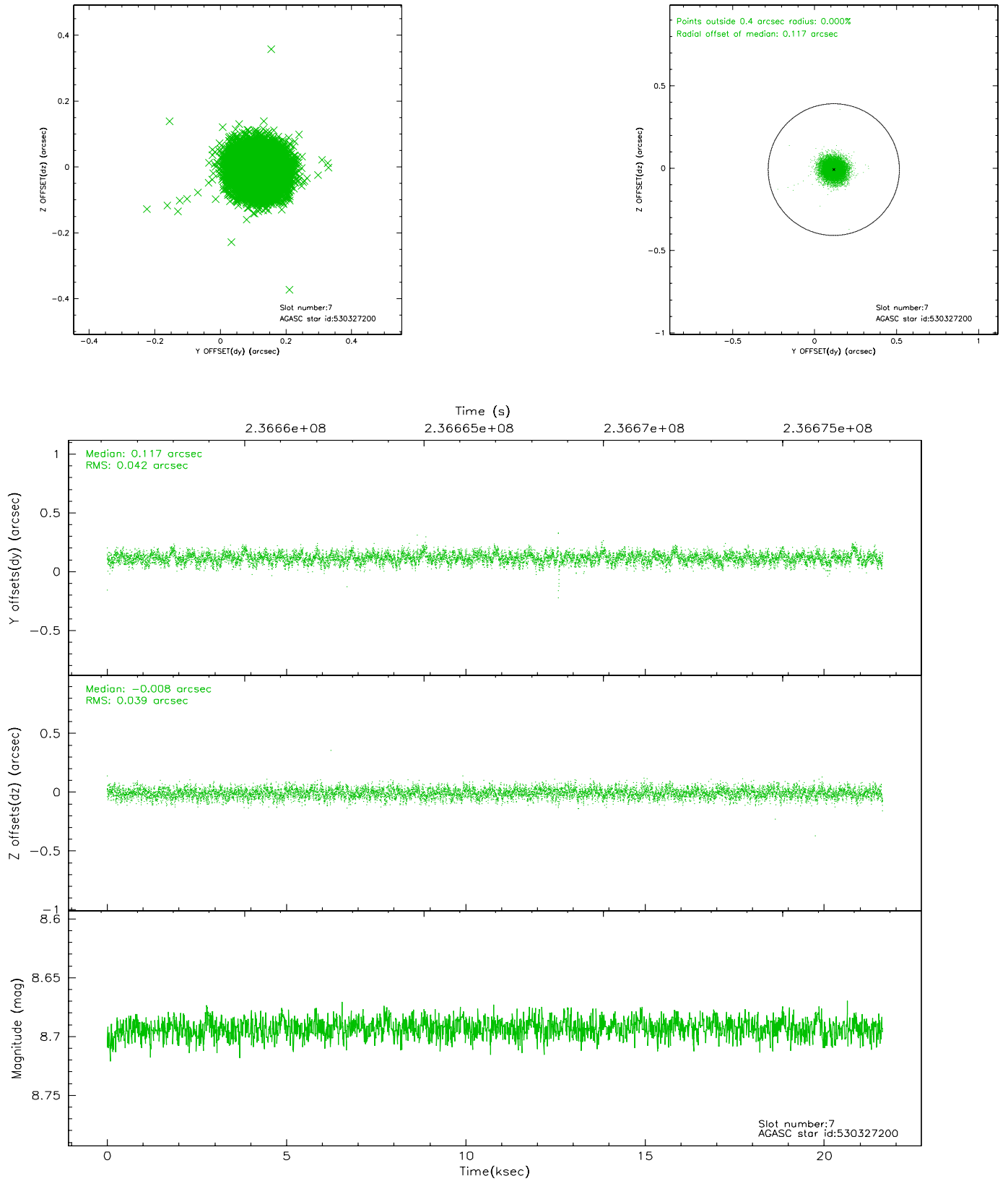
### 2.4.3 Slot 5



## 2.4.4 Slot 6

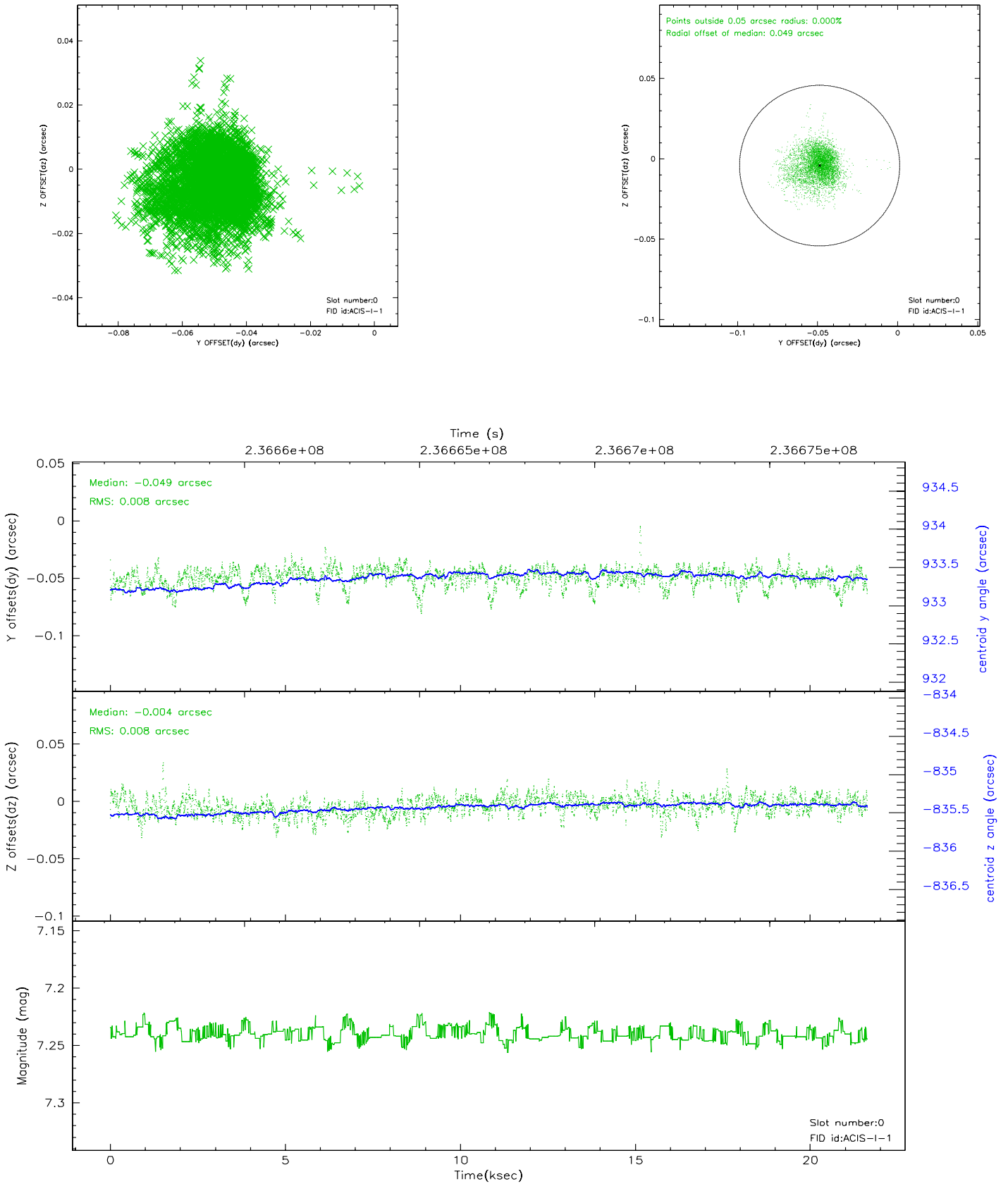


## 2.4.5 Slot 7

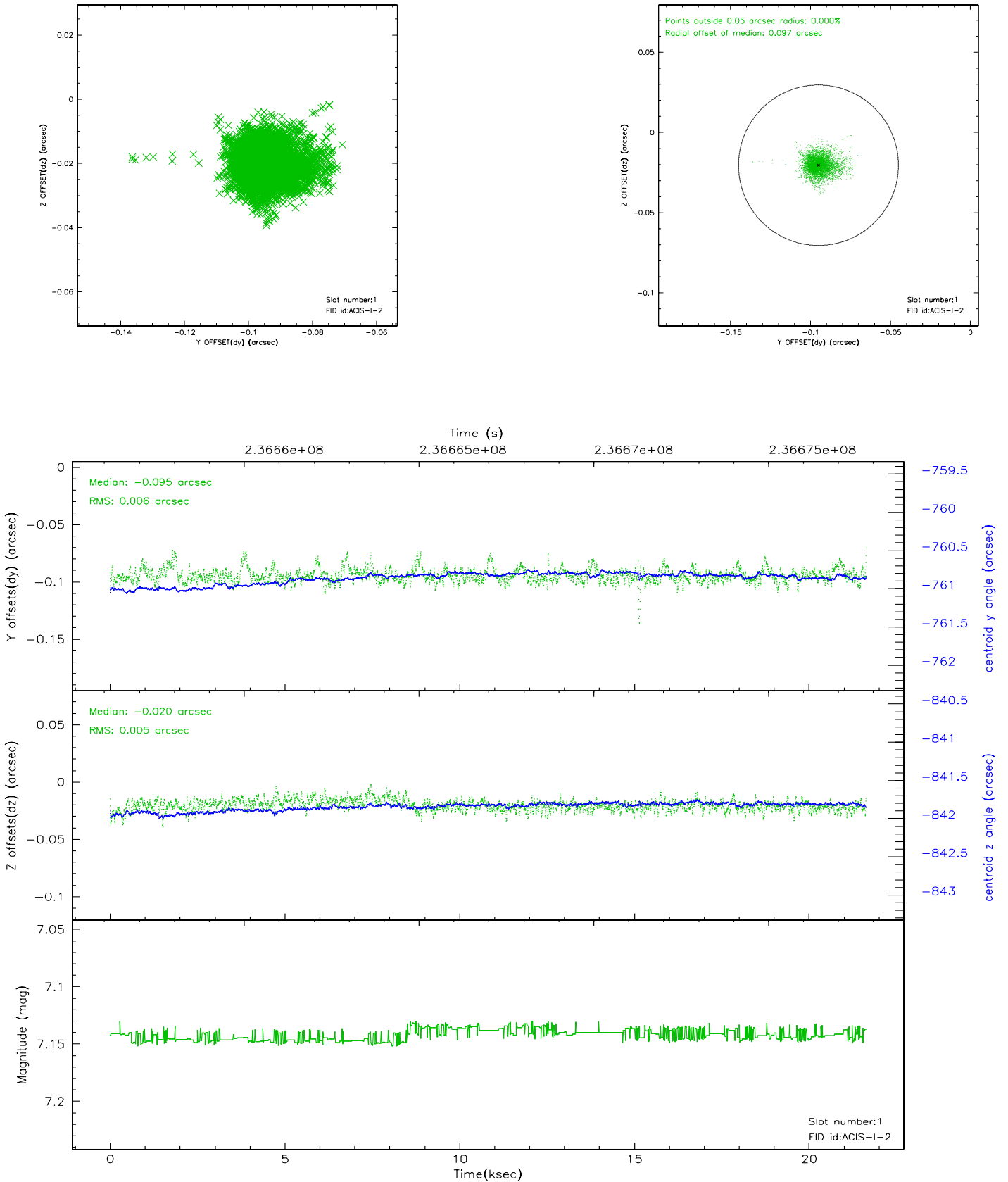


## 2.5 FID Slots

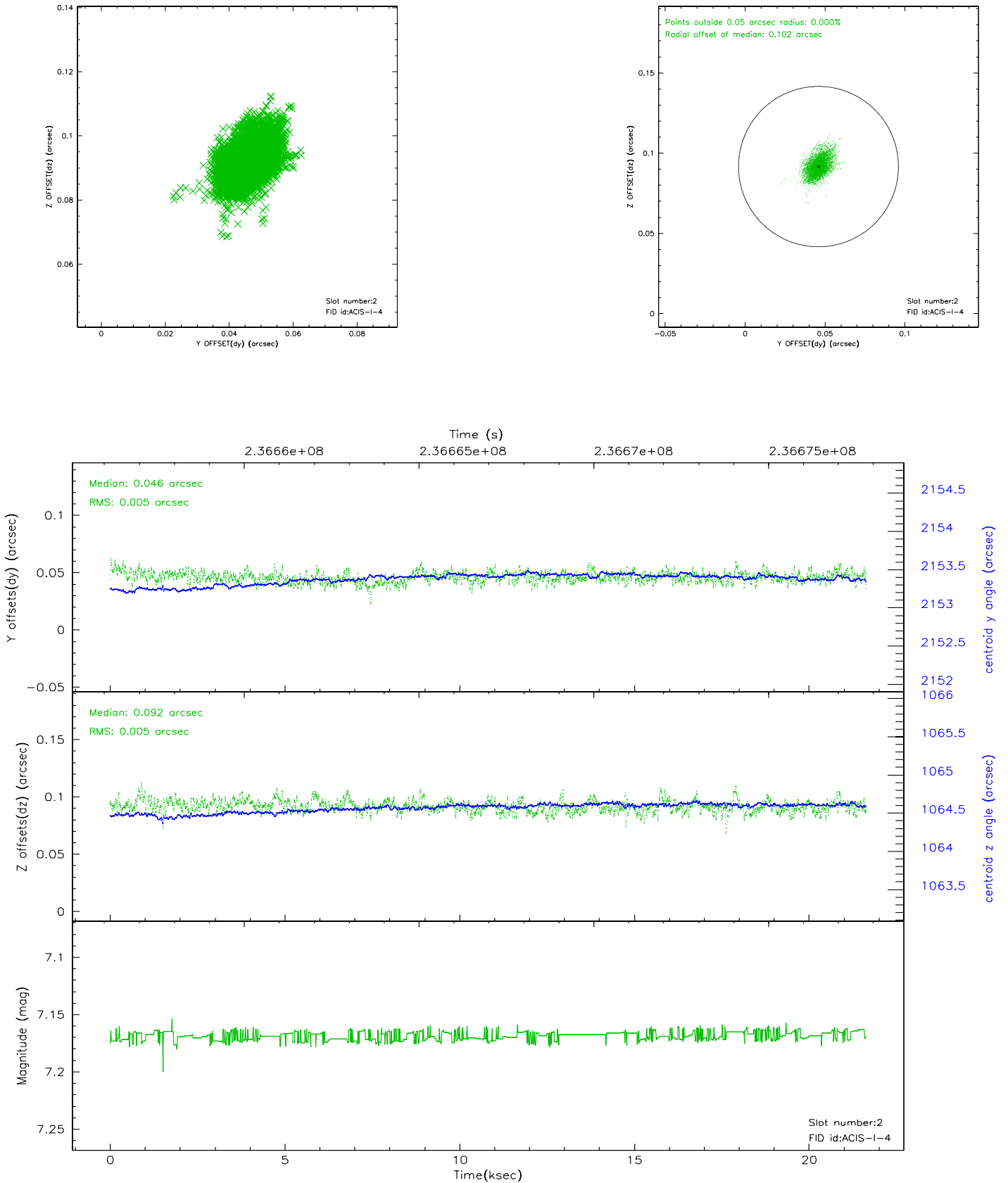
### 2.5.1 Slot 0



## 2.5.2 Slot 1

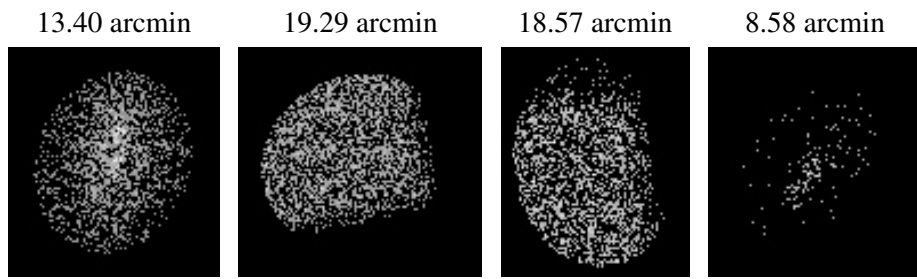


### 2.5.3 Slot 2





### 3 Point Sources



## A Summary

### A.1 Status

V&V Scientist	Beth Sundheim
V&V Date (YYYY-MM-DD)	2006.03.13
V&V Edition	1
V&V Disposition and Status	OK
V&V Charge Time	21.26719

### A.2 Comments