

# V&V Reference Report

## L2 ASCDS Version : 7.6.7.1

Observation 5854 - L2 Version 002  
Chandra X-Ray Center

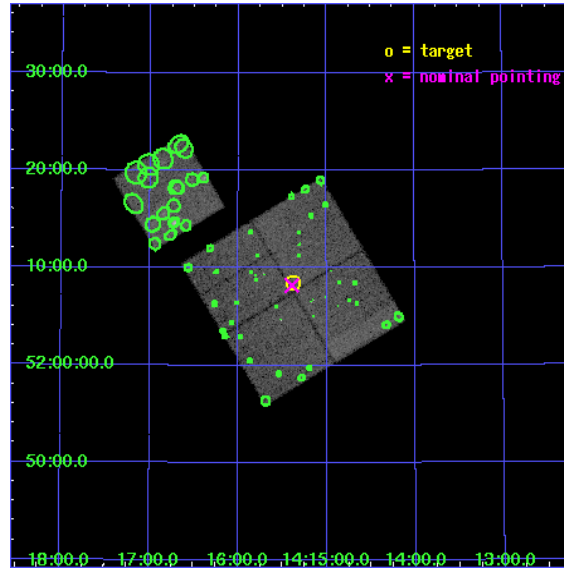
L2 Processing Date : Mar 31 2006

## Contents

<b>1</b>	<b>Front</b>	<b>2</b>
<b>2</b>	<b>OBI</b>	<b>3</b>
2.1	OBI . . . . .	3
2.1.1	Images . . . . .	3
2.1.2	Bias . . . . .	3
2.1.3	Parameters . . . . .	4
2.1.4	Events . . . . .	4
2.2	Compared Parameters . . . . .	5
2.3	Aspect . . . . .	6
2.4	Star Slots . . . . .	9
2.4.1	Slot 3 . . . . .	9
2.4.2	Slot 4 . . . . .	10
2.4.3	Slot 5 . . . . .	11
2.4.4	Slot 6 . . . . .	12
2.4.5	Slot 7 . . . . .	13
2.5	FID Slots . . . . .	14
2.5.1	Slot 0 . . . . .	14
2.5.2	Slot 1 . . . . .	15
2.5.3	Slot 2 . . . . .	16
<b>3</b>	<b>Point Sources</b>	<b>17</b>
<b>A</b>	<b>Summary</b>	<b>18</b>
A.1	Status . . . . .	18
A.2	Comments . . . . .	18

# 1 Front

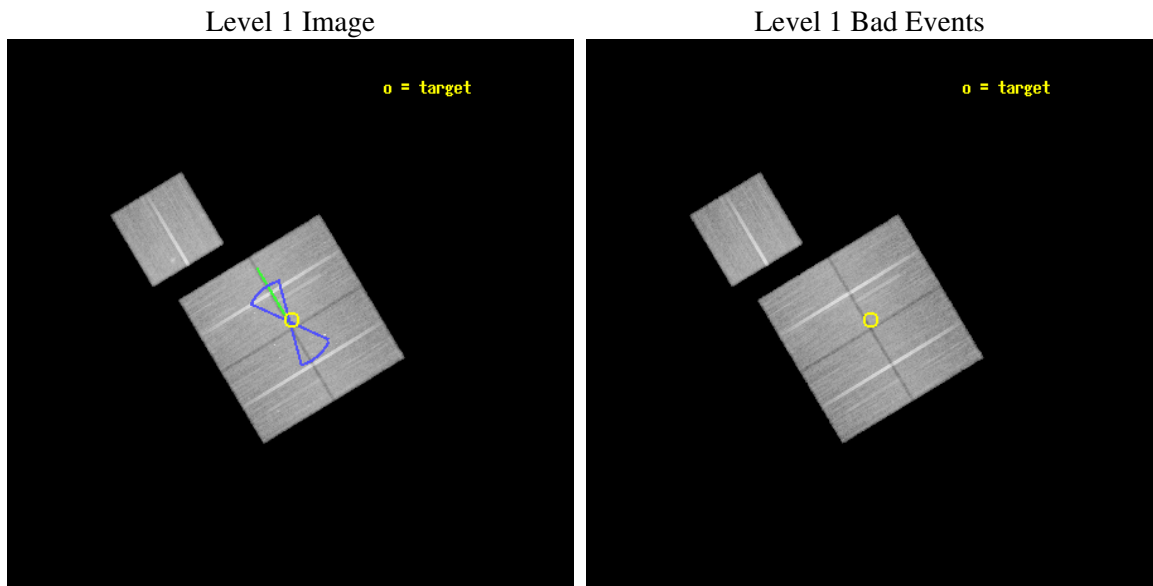
seq_num	900354
obs_id	5854
title	Deep Chandra Imaging of the Extended Groth Strip: The Co-evolution of Black Holes and Galaxies
observer	Professor Kirpal Nandra
object	EGS-7
dtcycle	0
cycle	P
ra_targ	213.843735
dec_targ	52.140667
ra_nom	213.84815500612
dec_nom	52.136921906543
roll_nom	328.97374202535
revision	2
ontime	50728.399902463
livetime	50065.596012033
ontime0	50725.258932173
ontime1	50725.258942217
ontime2	50725.258912295
ontime3	50728.399902463
ontime6	50725.258932203
l2events	134060



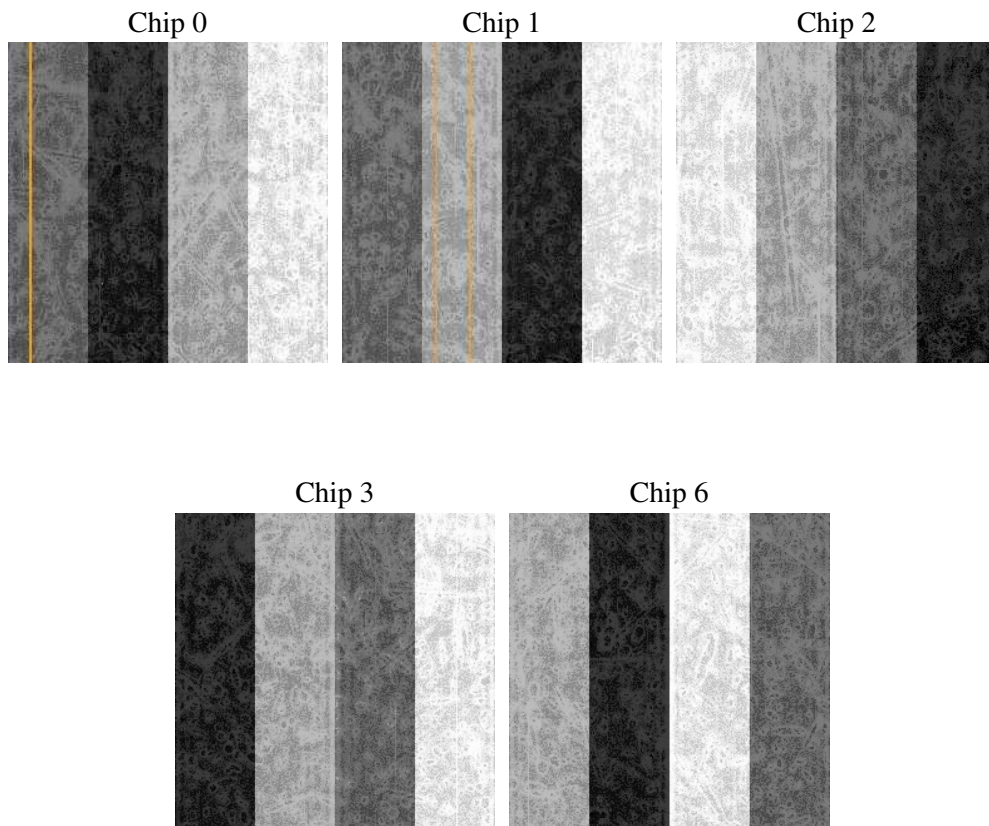
## 2 OBI

### 2.1 OBI

#### 2.1.1 Images



#### 2.1.2 Bias



### 2.1.3 Parameters

obi_num	0
ascdsver	7.6.7.1
caldbver	3.2.1
date	2006-03-31T16:27:51
revision	2

sched_exp_time	50600.000000
ontime	51182.642095298
ontime0	51179.501125008
ontime1	51179.501135051
ontime2	51179.50110513
ontime3	51182.642095298
ontime6	51179.501125038
l1events	1519554

### 2.1.4 Events

	ccd 0	ccd 1	ccd 2	ccd 3	ccd 6
level 1 events	290641	284320	327097	303636	313860
rejected events	259562	248723	296307	274514	279617
rejected %	89%	87%	90%	90%	89%

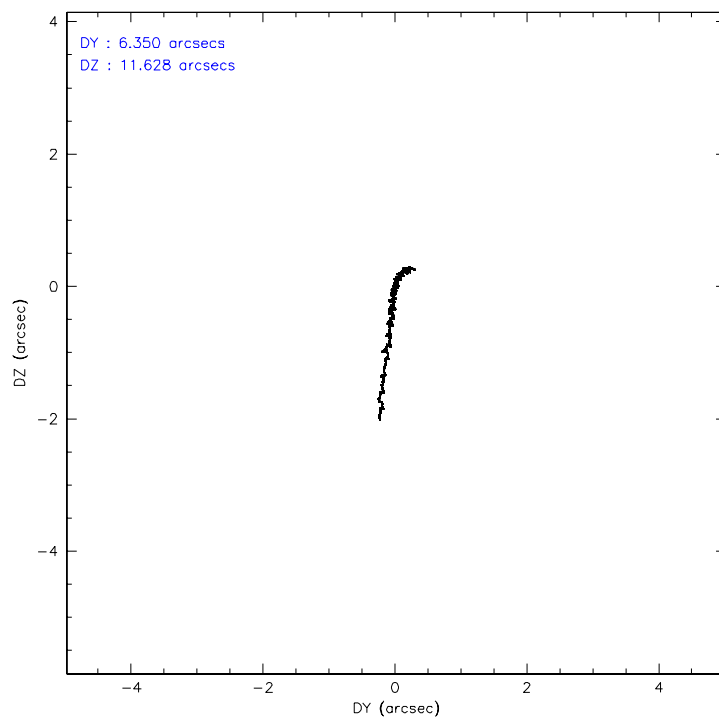
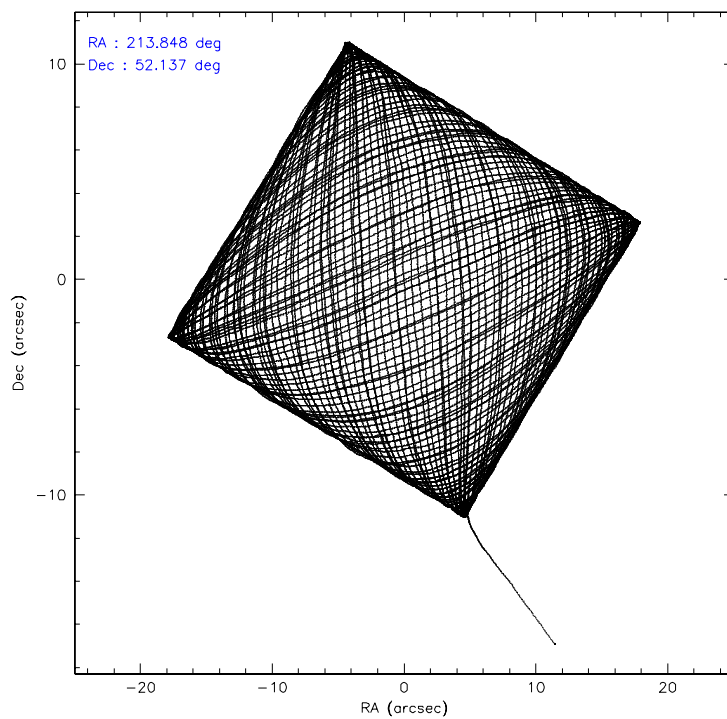
	ccd 0	ccd 1	ccd 2	ccd 3	ccd 6
grade 0 events	11076	13546	11222	9958	12801
	3%	4%	3%	3%	4%
grade 1 events	126	147	166	133	148
	0%	0%	0%	0%	0%
grade 2 events	7515	7733	7537	6778	7286
	2%	2%	2%	2%	2%
grade 3 events	3566	3800	3250	3400	3766
	1%	1%	0%	1%	1%
grade 4 events	3305	3787	3416	3310	3593
	1%	1%	1%	1%	1%
grade 5 events	10703	12183	10542	12776	12717
	3%	4%	3%	4%	4%
grade 6 events	5918	7040	5628	5917	7064
	2%	2%	1%	1%	2%
grade 7 events	248432	236084	285336	261364	266485
	85%	83%	87%	86%	84%

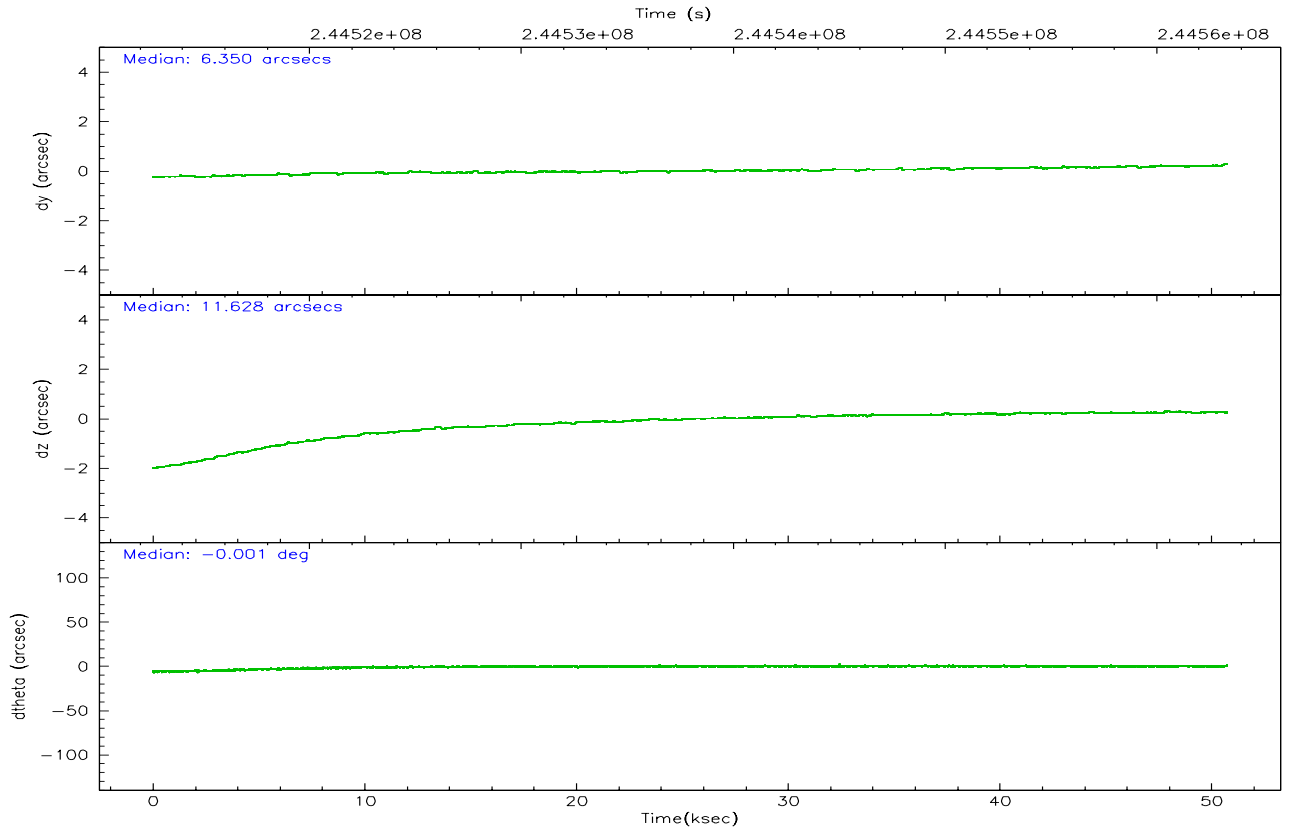
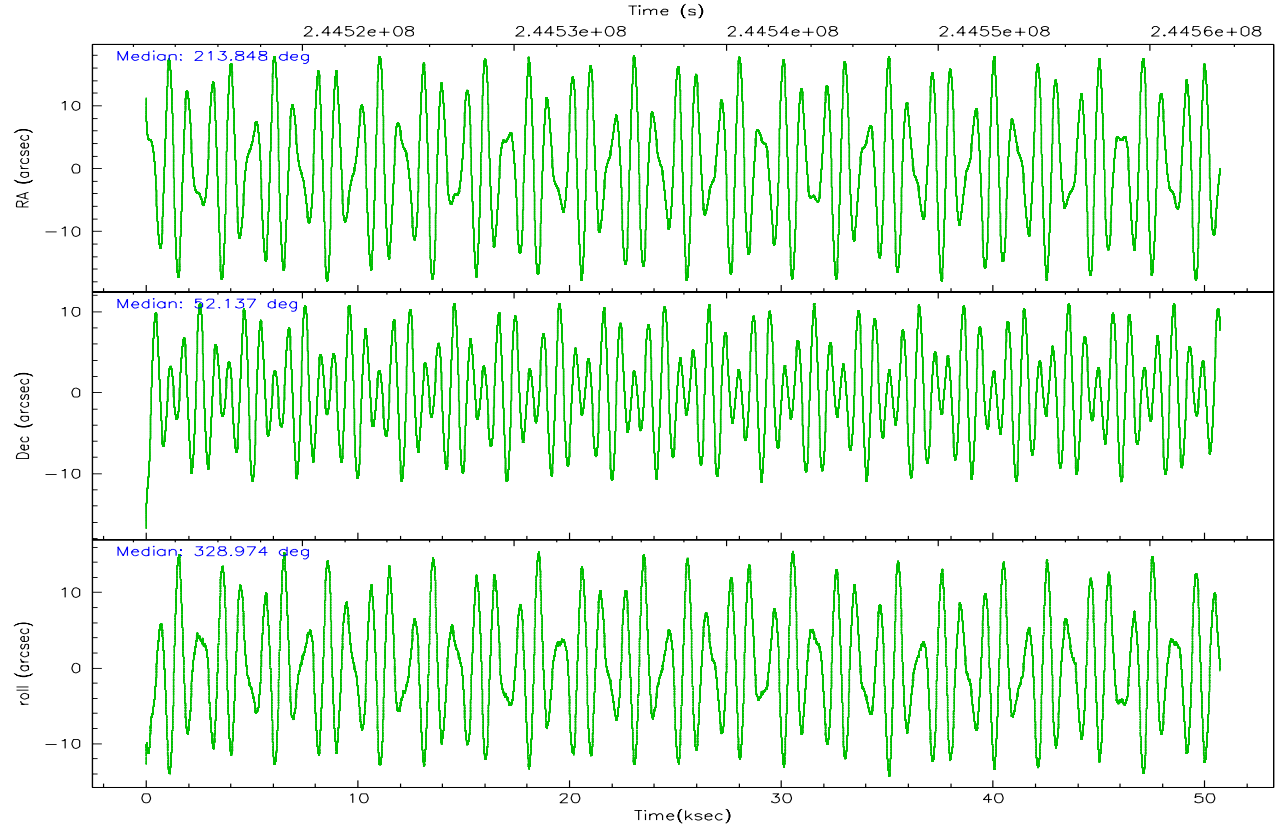


## 2.2 Compared Parameters

Parameter	Planned	Actual	Parameter	Planned	Actual
Instrument	ACIS	ACIS	Obspar format version number	6	6
Detector	ACIS-01236	ACIS-01236	Obspar file type	PREDICTED	ACTUAL
Grating	NONE	NONE	Obspar update status	NONE	UPDATED
Data mode	VFAINT	VFAINT	On-chip summing requested	N	N
Observation mode	POINTING	POINTING	Subarray requested	NONE	NONE
Pointing RA	213.803566	213.848155006115	Alternating exposures requested	N	N
Pointing Dec	52.137282	52.1369219065432	Primary exposure time	0.000000	3.1
Pointing Roll	328.800264	328.9737420253545			
Roll angle	50.756000	50.756000			
Roll tolerance	25.000000	25.000000			
Roll constraint allows 180D rotation	Y	Y			
SIM focus pos (mm)	-0.782348	-0.7809083437167272			
SIM defocus (mm)	0	0.001439871863259334			
SIM translation stage pos (mm)	-233.592463	-233.5874344608287			
SIM translation stage offset (mm)	0	-0.005018542100998502			
Observation start time	244512735.184000	244511543.06147			
Observation start date	2005-10-01T00:11:11	2005-09-30T23:52:23			
Observation end time	244563335.184000	244564361.3139			
Observation end date	2005-10-01T14:14:31	2005-10-01T14:32:41			
Read mode	TIMED	TIMED			

## 2.3 Aspect



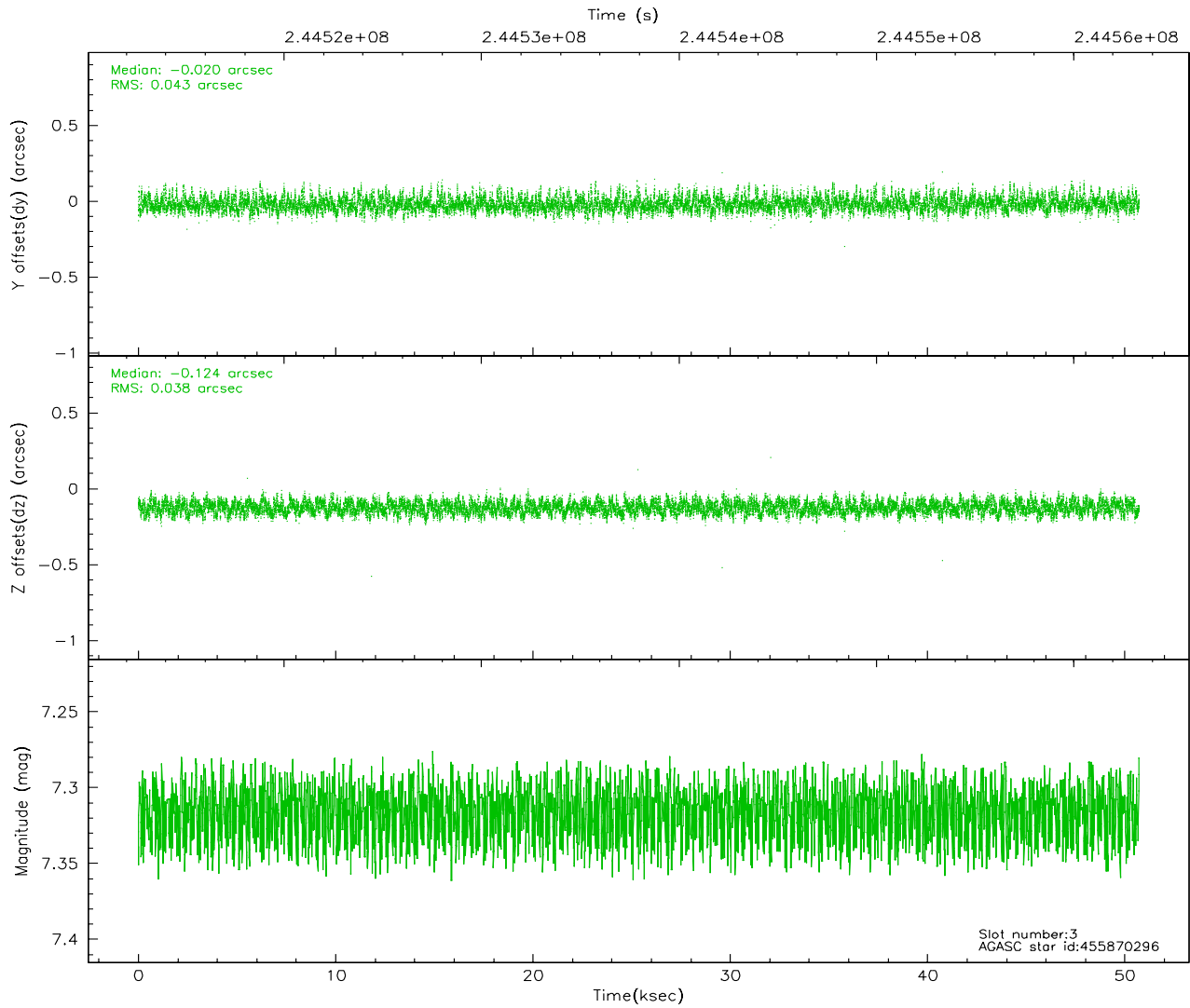
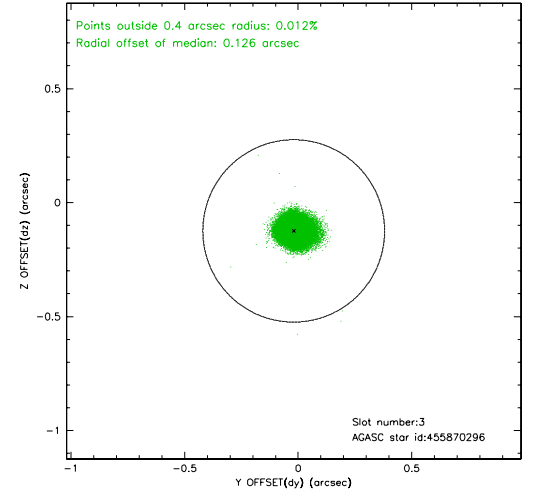
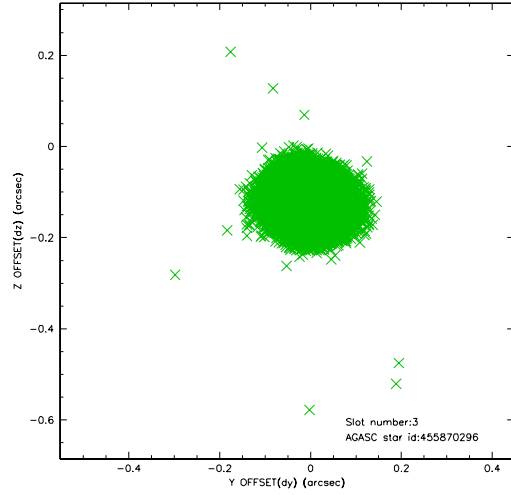


### Slot Statistics

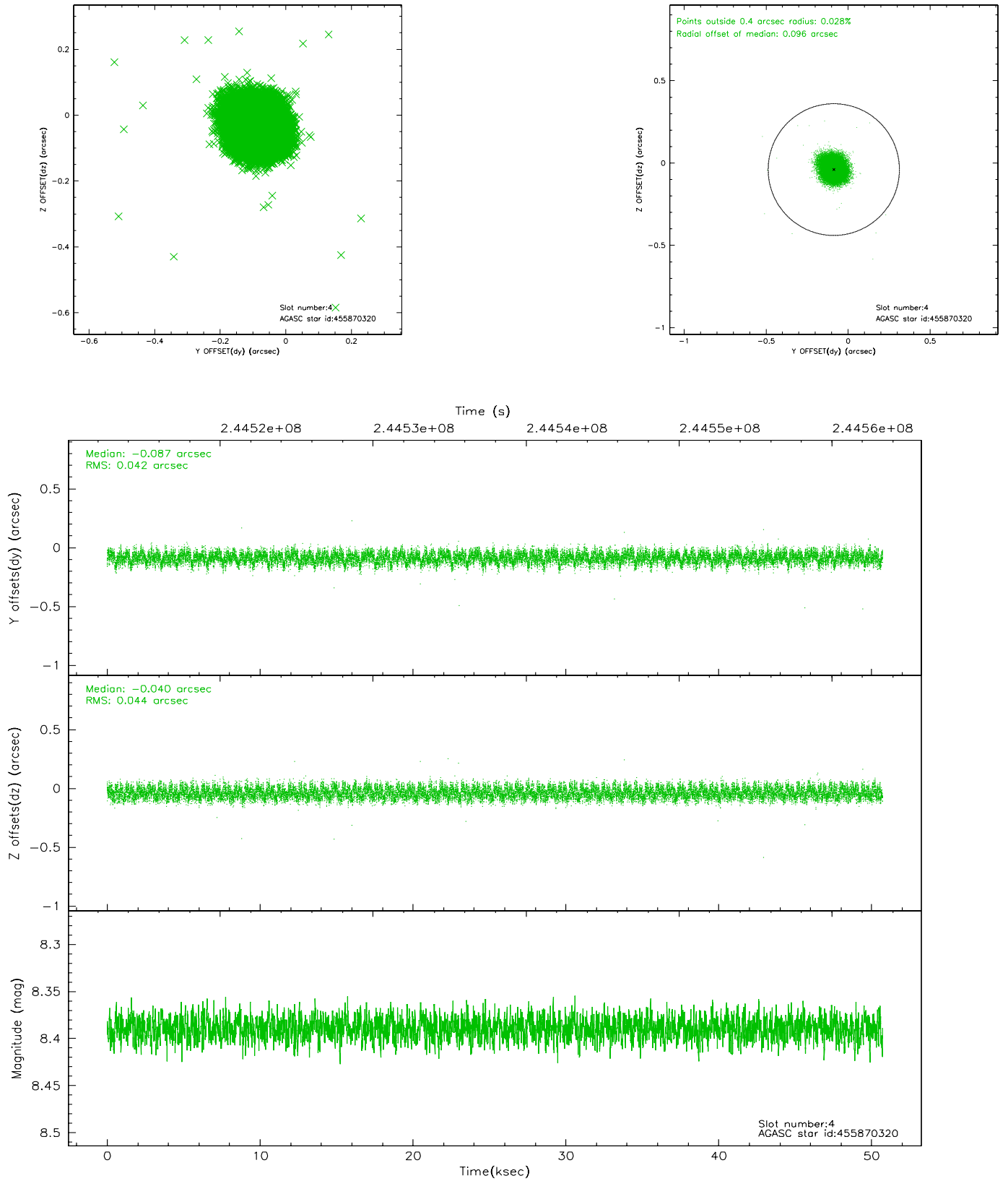
slot	status	id	mag	n_pts	med_dy	med_dz	dr1	dr2	ra	dec	mean_y	mean_z
0	FID	ACIS-I-1	7.24	12375	0.027	0.004	0.010	0.044	0.000000	0.000000	933.34	-834.91
1	FID	ACIS-I-5	7.23	12374	-0.129	0.057	0.009	0.034	0.000000	0.000000	-1814.89	1062.69
2	FID	ACIS-I-6	7.25	12374	0.011	0.010	0.014	0.035	0.000000	0.000000	398.95	1707.08
3	GUIDE	455870296	7.32	24746	-0.020	-0.124	0.061	0.096	214.629779	52.033323	1753.66	636.57
4	GUIDE	455870320	8.39	24743	-0.087	-0.040	0.066	0.101	214.874440	52.401638	1510.02	2047.31
5	GUIDE	505806936	7.01	24750	-0.043	-0.050	0.068	0.111	213.820815	52.535927	-711.07	1247.19
6	GUIDE	454958240	9.05	24734	0.141	0.154	0.080	0.128	212.550018	52.097330	-2308.91	-1538.48
7	GUIDE	455871352	8.10	24748	0.002	0.061	0.065	0.108	215.099961	52.172669	2368.87	1613.54

## 2.4 Star Slots

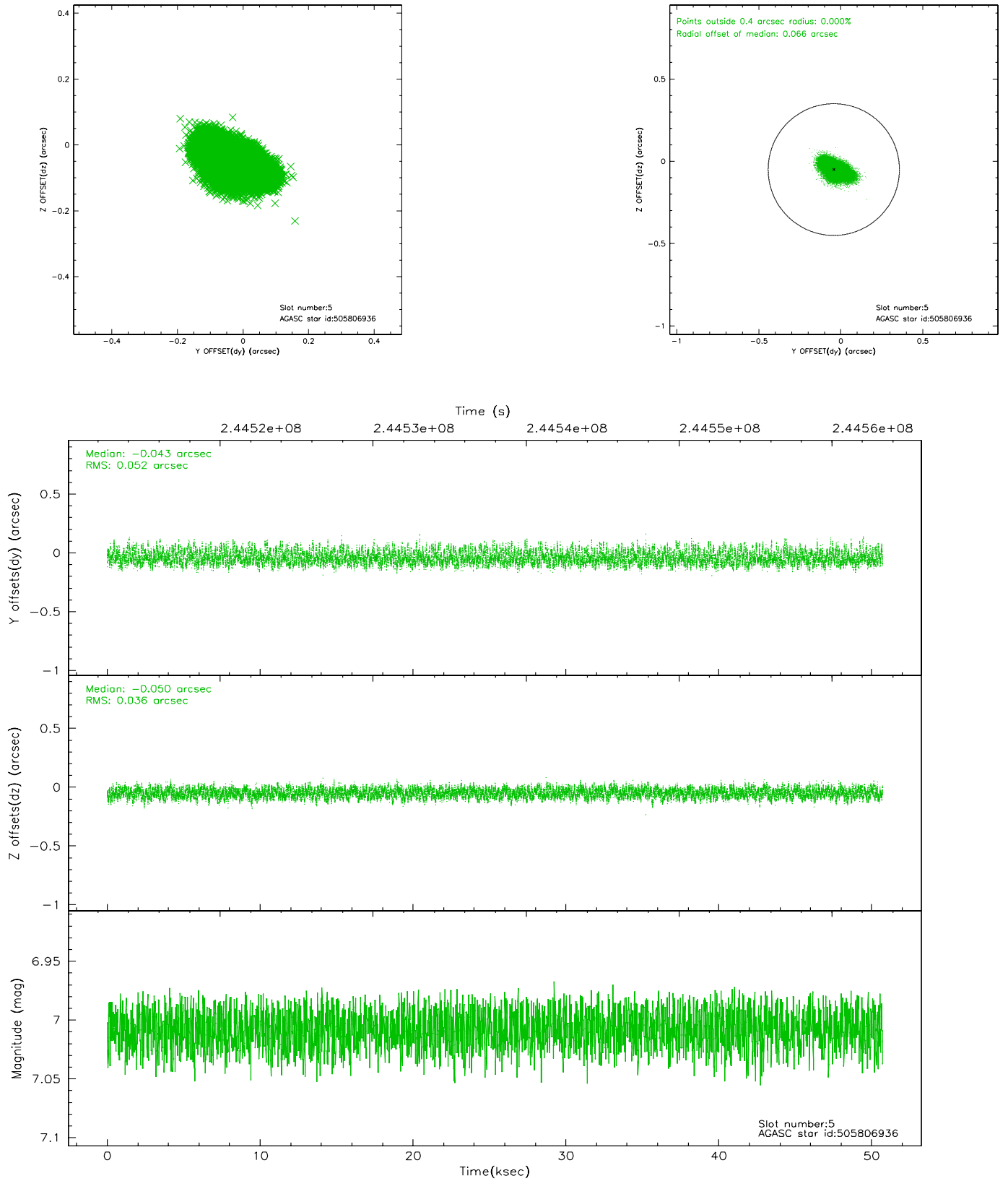
### 2.4.1 Slot 3



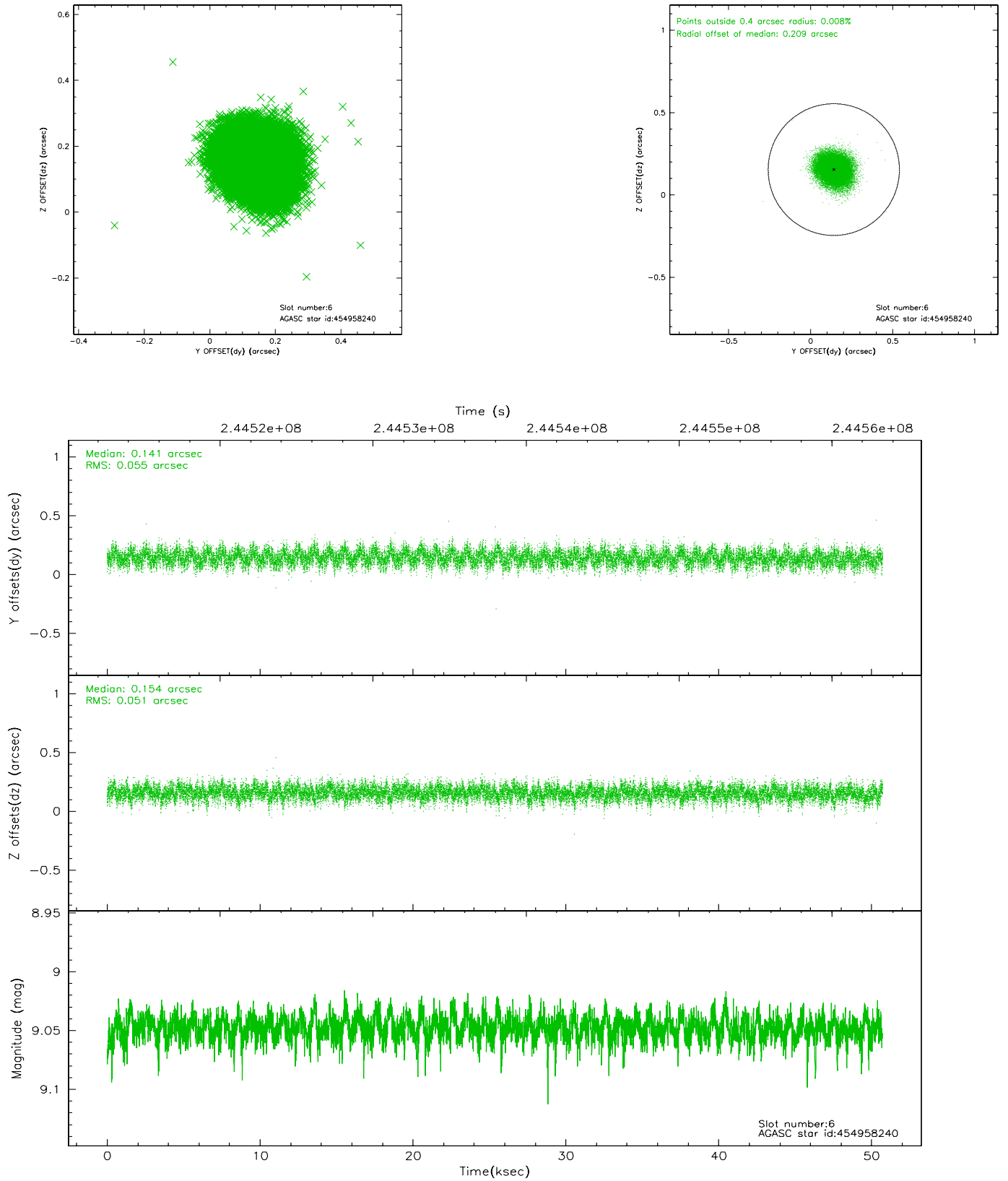
## 2.4.2 Slot 4



### 2.4.3 Slot 5

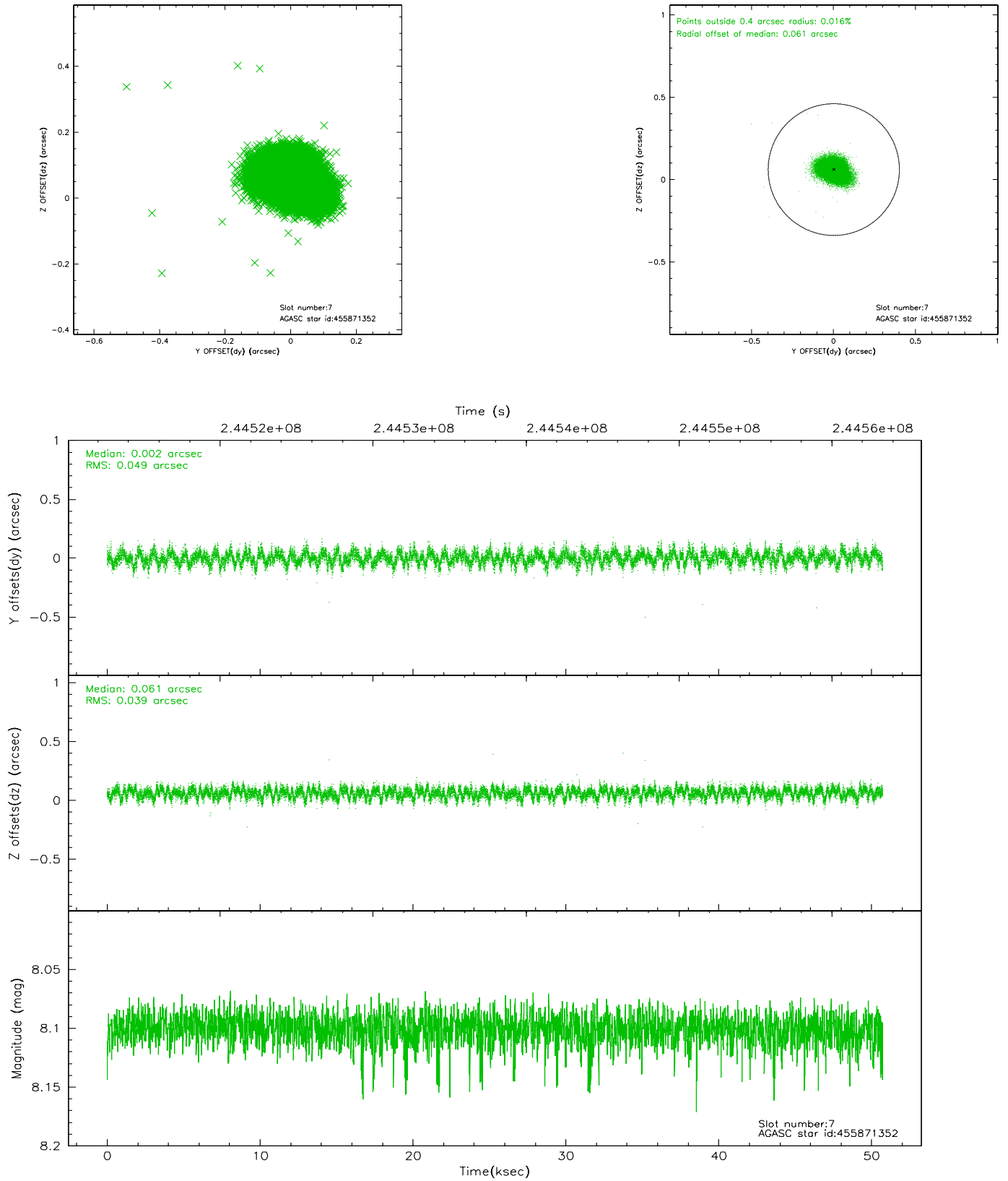


## 2.4.4 Slot 6



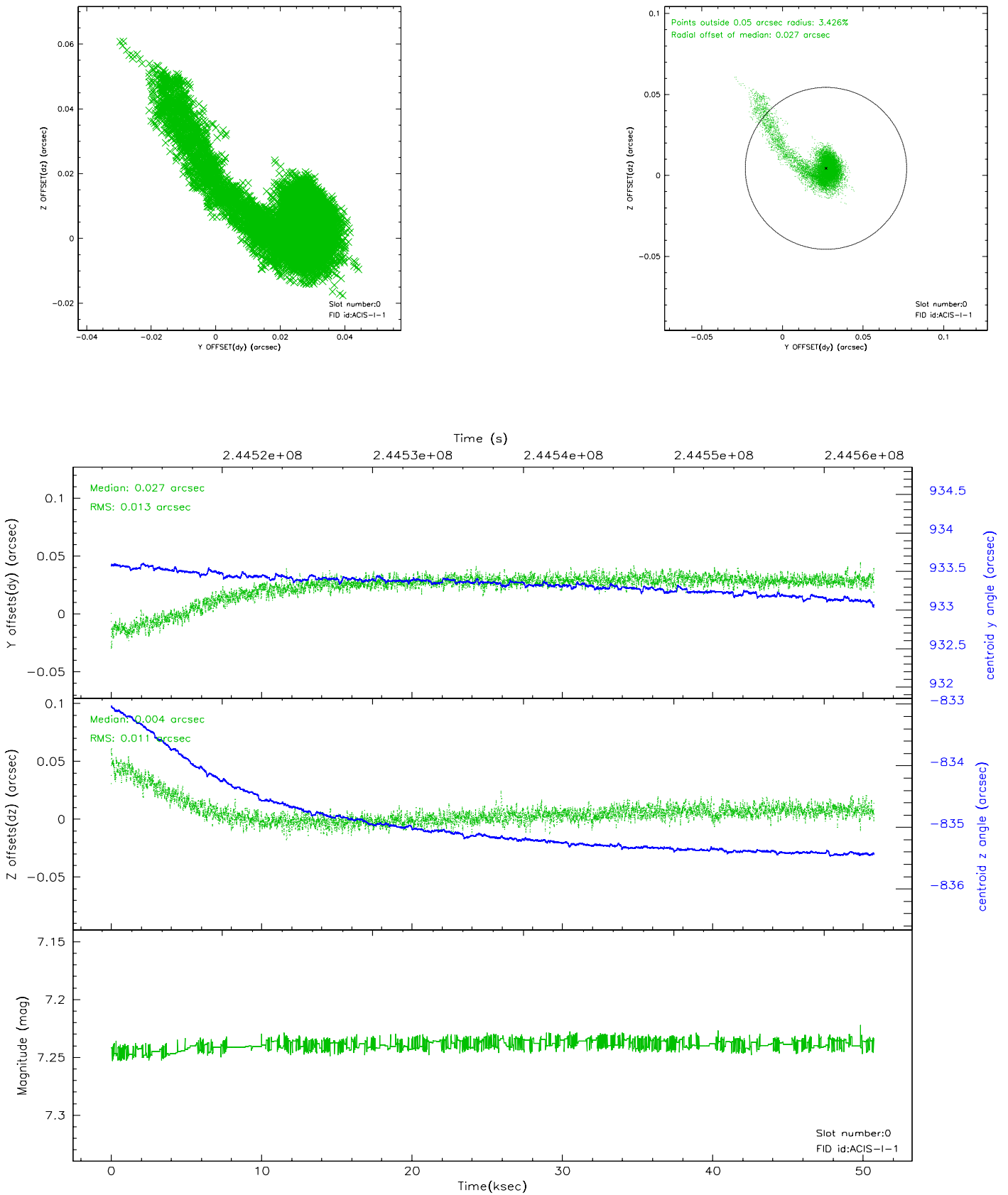


## 2.4.5 Slot 7

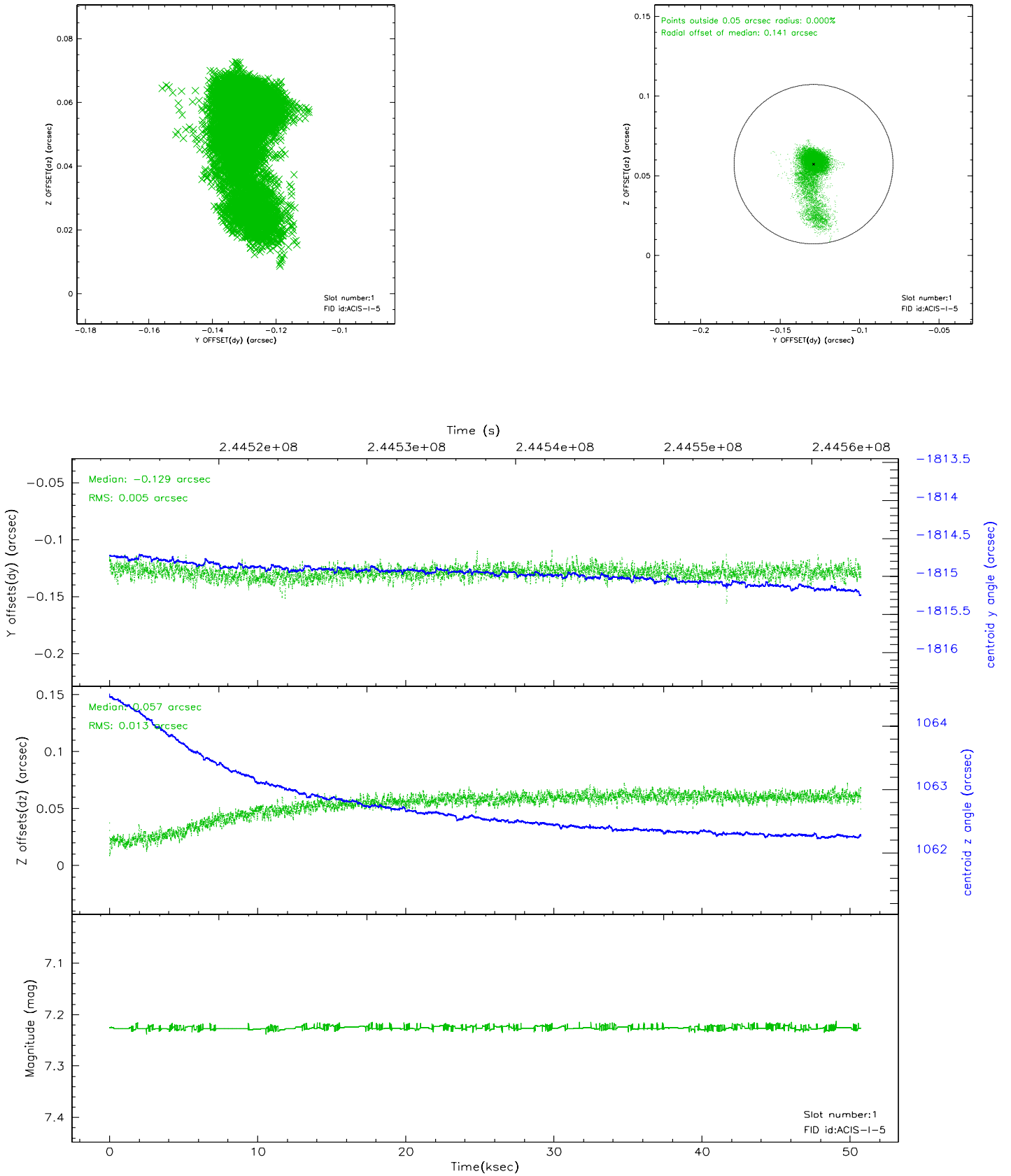


## 2.5 FID Slots

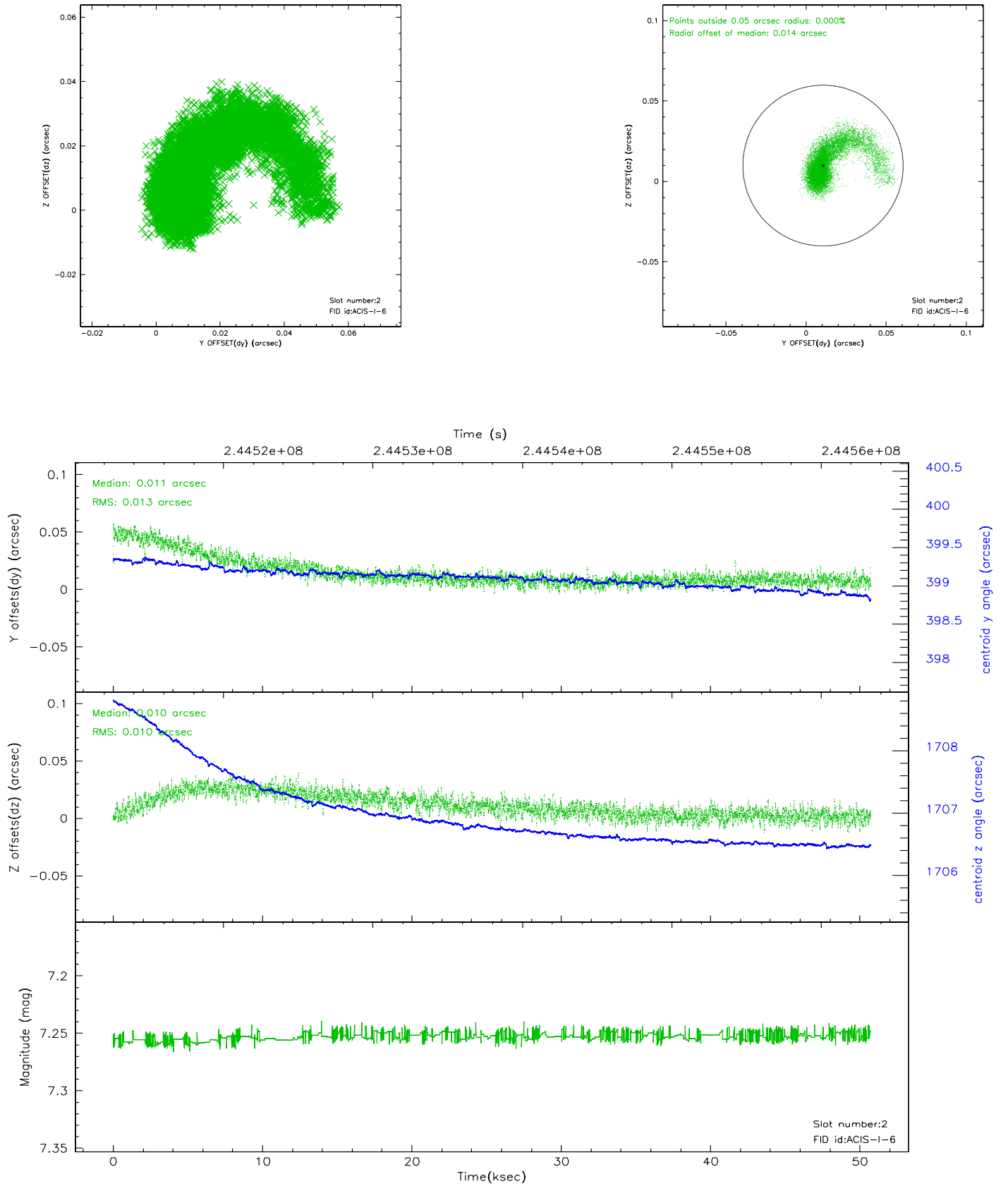
### 2.5.1 Slot 0



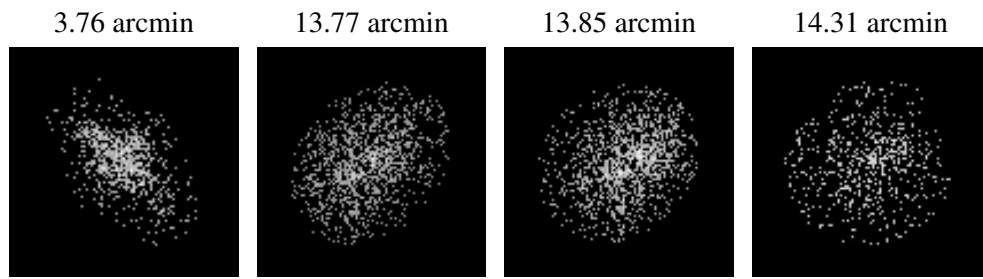
## 2.5.2 Slot 1



### 2.5.3 Slot 2



### 3 Point Sources



# A Summary

## A.1 Status

V&V Scientist	Beth Sundheim
V&V Date (YYYY-MM-DD)	2006.03.31
V&V Edition	1
V&V Disposition and Status	OK
V&V Charge Time	50.72839

## A.2 Comments

Roll constraint satisfied.

Focal plane temperature is elevated during initial ~5 ksec of observation.