

# V&V Reference Report

## L2 ASCDS Version : 7.6.7.1

Observation 5851 - L2 Version 002  
Chandra X-Ray Center

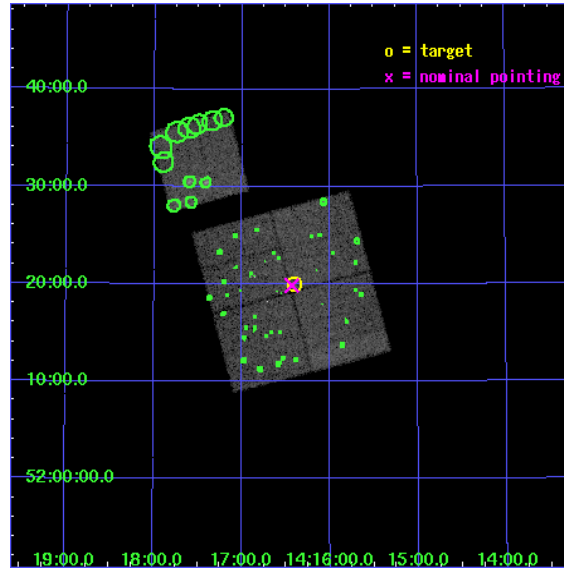
L2 Processing Date : Apr 1 2006

## Contents

<b>1</b>	<b>Front</b>	<b>2</b>
<b>2</b>	<b>OBI</b>	<b>3</b>
2.1	OBI . . . . .	3
2.1.1	Images . . . . .	3
2.1.2	Bias . . . . .	3
2.1.3	Parameters . . . . .	4
2.1.4	Events . . . . .	4
2.2	Compared Parameters . . . . .	5
2.3	Aspect . . . . .	6
2.4	Star Slots . . . . .	9
2.4.1	Slot 3 . . . . .	9
2.4.2	Slot 4 . . . . .	10
2.4.3	Slot 5 . . . . .	11
2.4.4	Slot 6 . . . . .	12
2.4.5	Slot 7 . . . . .	13
2.5	FID Slots . . . . .	14
2.5.1	Slot 0 . . . . .	14
2.5.2	Slot 1 . . . . .	15
2.5.3	Slot 2 . . . . .	16
<b>3</b>	<b>Point Sources</b>	<b>17</b>
<b>A</b>	<b>Summary</b>	<b>18</b>
A.1	Status . . . . .	18
A.2	Comments . . . . .	18

# 1 Front

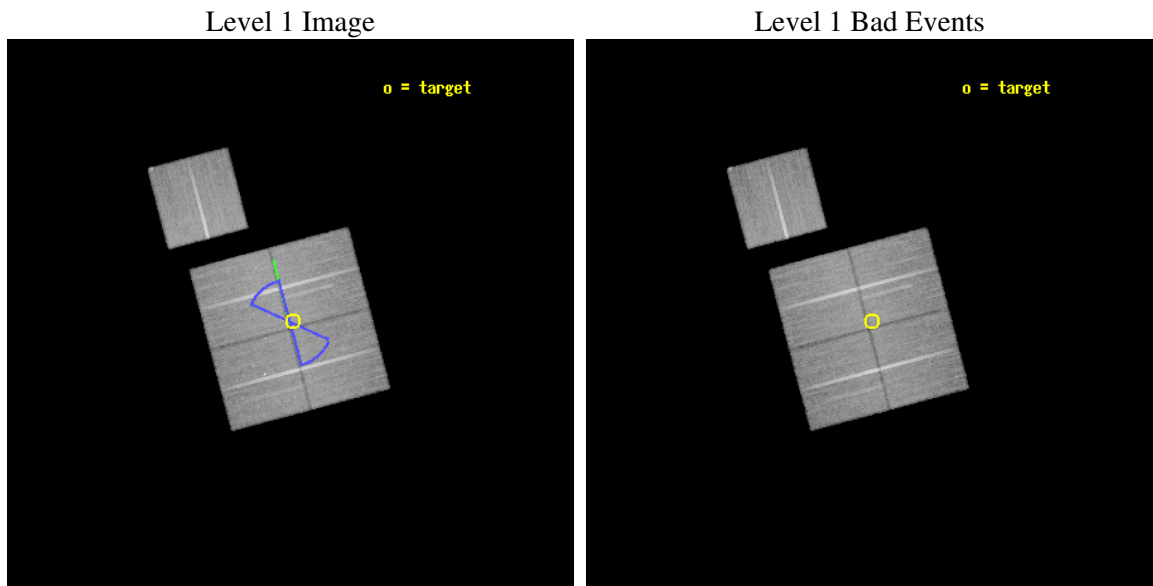
seq_num	900353
obs_id	5851
title	Deep Chandra Imaging of the Extended Groth Strip: The Co-evolution of Black Holes and Galaxies
observer	Professor Kirpal Nandra
object	EGS-6
dtcycle	0
cycle	P
ra_targ	214.102081
dec_targ	52.334053
ra_nom	214.1080765933
dec_nom	52.331214465781
roll_nom	345.20394148961
revision	2
ontime	36149.017960072
livetime	35676.704427903
ontime0	36155.299930483
ontime1	36155.299930483
ontime2	36152.158960253
ontime3	36149.017960072
ontime6	36149.018049747
l2events	99729



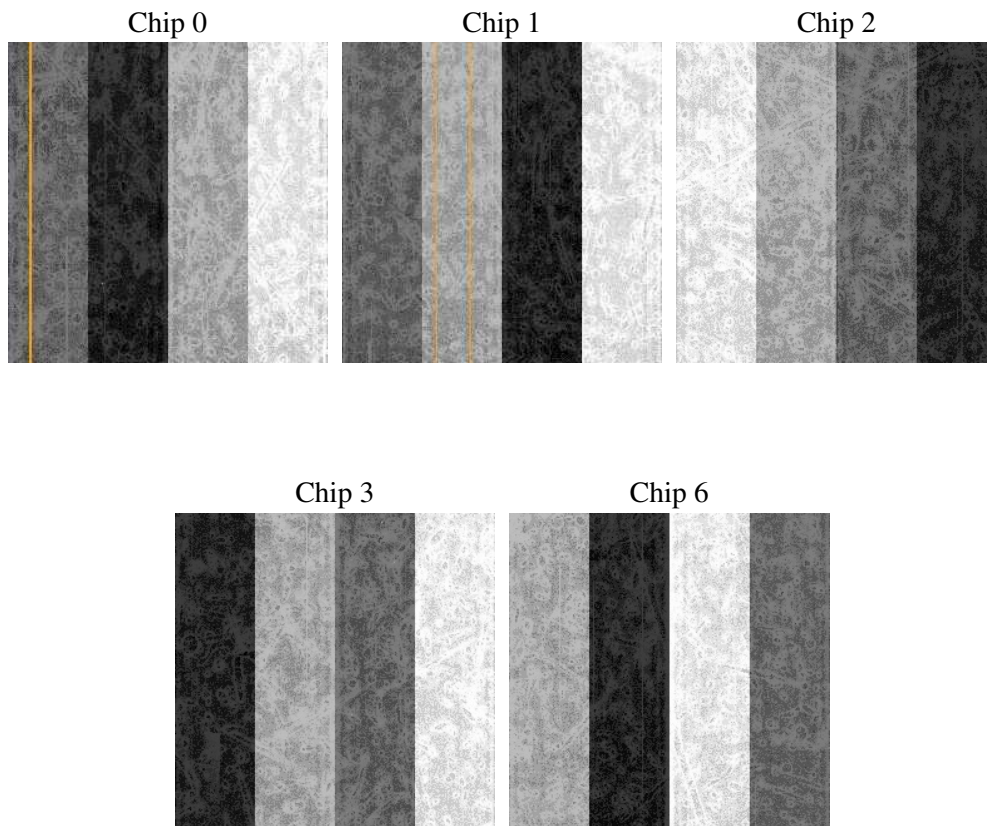
## 2 OBI

### 2.1 OBI

#### 2.1.1 Images



#### 2.1.2 Bias



### 2.1.3 Parameters

obi_num	0
ascdsver	7.6.7.1
caldbver	3.2.1
date	2006-04-01T03:03:29
revision	2

sched_exp_time	36000.000000
ontime	36561.289444089
ontime0	36567.571444392
ontime1	36567.5714145
ontime2	36564.43044427
ontime3	36561.289444089
ontime6	36561.289563656
l1events	1165700

### 2.1.4 Events

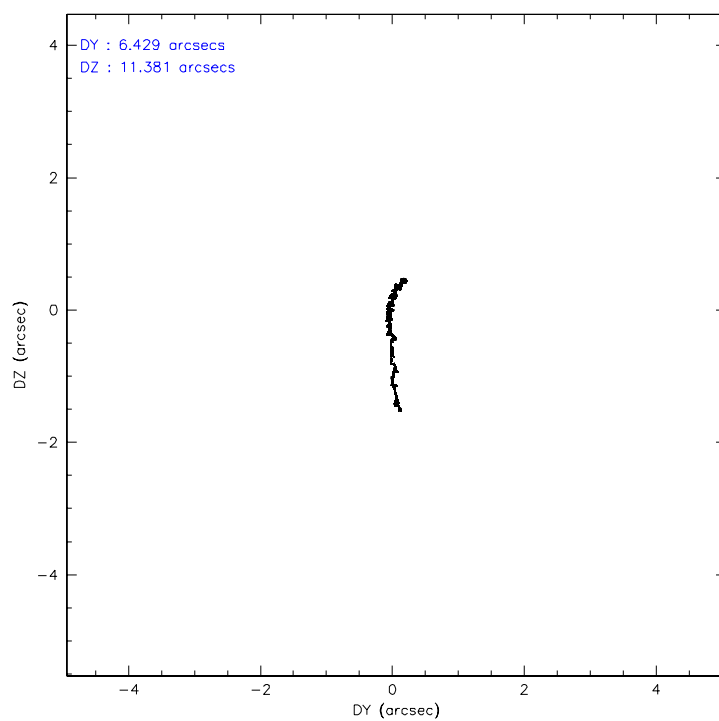
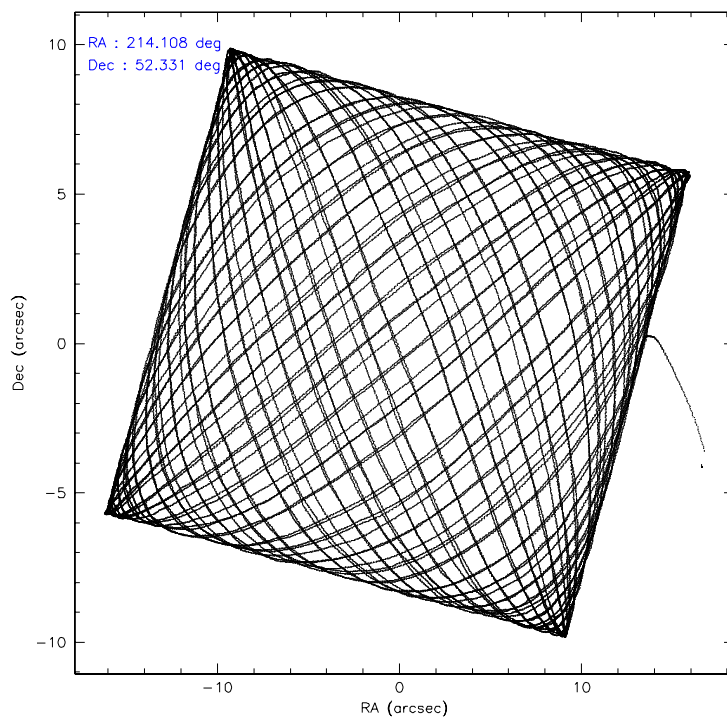
	ccd 0	ccd 1	ccd 2	ccd 3	ccd 6
level 1 events	222398	221120	248803	237205	236174
rejected events	197876	195458	225628	215243	212124
rejected %	88%	88%	90%	90%	89%

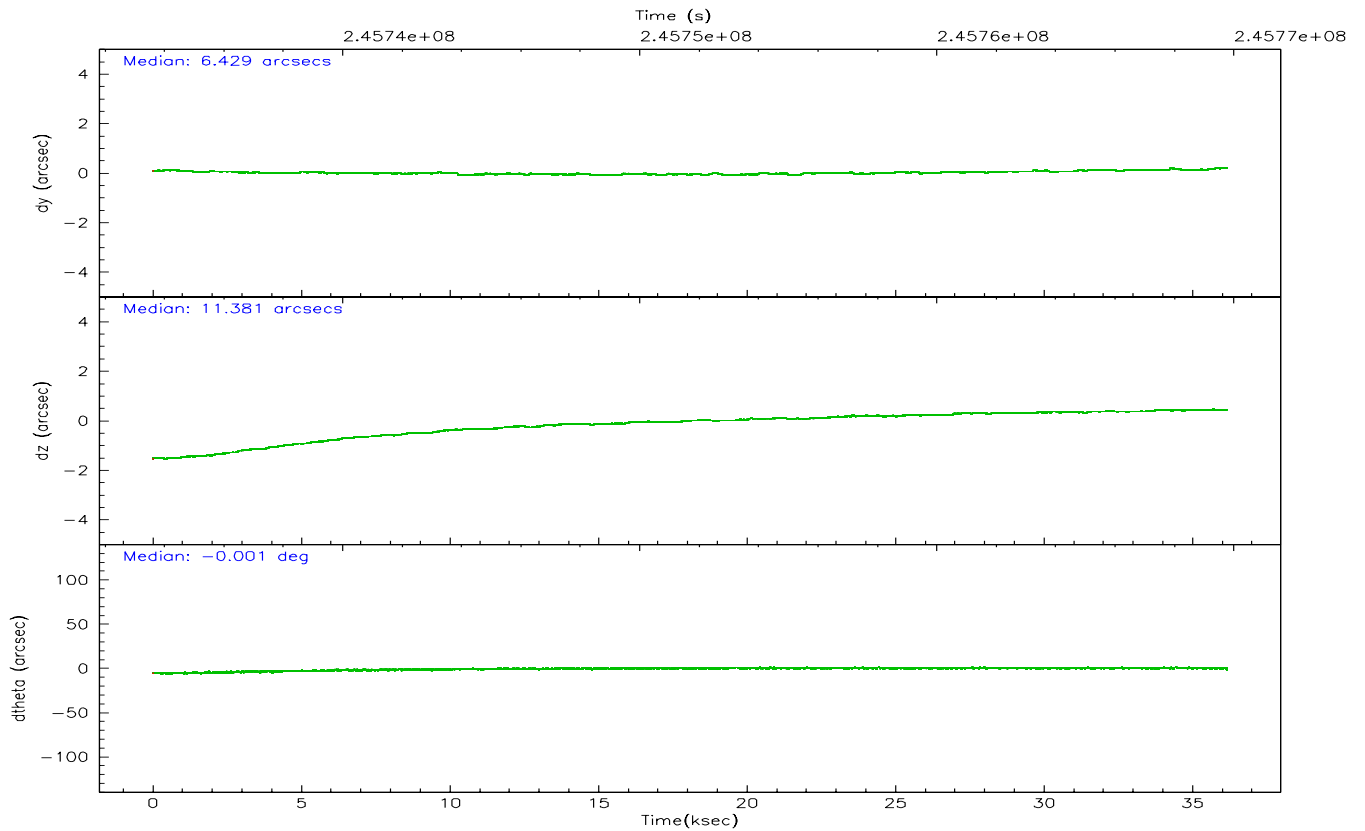
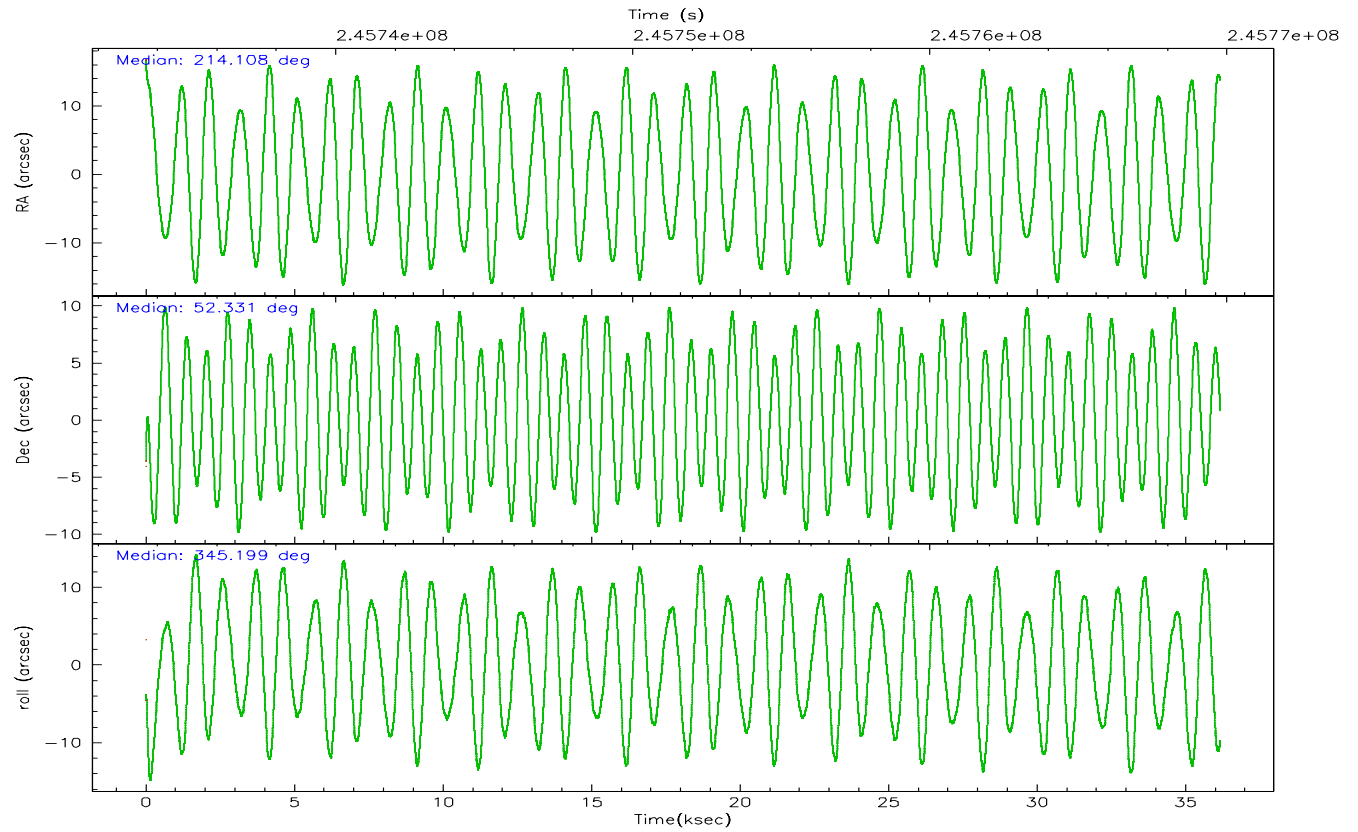
	ccd 0	ccd 1	ccd 2	ccd 3	ccd 6
grade 0 events	9381	9270	8671	7768	8623
	4%	4%	3%	3%	3%
grade 1 events	104	92	131	119	92
	0%	0%	0%	0%	0%
grade 2 events	5679	5682	5401	4824	5277
	2%	2%	2%	2%	2%
grade 3 events	2722	2845	2536	2629	2709
	1%	1%	1%	1%	1%
grade 4 events	2503	2898	2566	2549	2658
	1%	1%	1%	1%	1%
grade 5 events	8090	9110	7517	9685	9492
	3%	4%	3%	4%	4%
grade 6 events	4531	5252	4223	4457	5054
	2%	2%	1%	1%	2%
grade 7 events	189388	185971	217758	205174	202269
	85%	84%	87%	86%	85%

## 2.2 Compared Parameters

Parameter	Planned	Actual	Parameter	Planned	Actual
Instrument	ACIS	ACIS	Obspar format version number	6	6
Detector	ACIS-01236	ACIS-01236	Obspar file type	PREDICTED	ACTUAL
Grating	NONE	NONE	Obspar update status	NONE	UPDATED
Data mode	VFAINT	VFAINT	On-chip summing requested	N	N
Observation mode	POINTING	POINTING	Subarray requested	NONE	NONE
Pointing RA	214.064887	214.108076593299	Alternating exposures requested	N	N
Pointing Dec	52.323922	52.33121446578091	Primary exposure time	0.000000	3.1
Pointing Roll	345.029437	345.2039414896116			
Roll angle	50.756000	50.756000			
Roll tolerance	25.000000	25.000000			
Roll constraint allows 180D rotation	Y	Y			
SIM focus pos (mm)	-0.782348	-0.7809083437167272			
SIM defocus (mm)	0	0.001439871863259334			
SIM translation stage pos (mm)	-233.592463	-233.5874344608287			
SIM translation stage offset (mm)	0	-0.005018542100998502			
Observation start time	245733783.184000	245732598.45517			
Observation start date	2005-10-15T03:21:59	2005-10-15T03:03:18			
Observation end time	245769783.184000	245770725.38193			
Observation end date	2005-10-15T13:21:59	2005-10-15T13:38:45			
Read mode	TIMED	TIMED			

## 2.3 Aspect





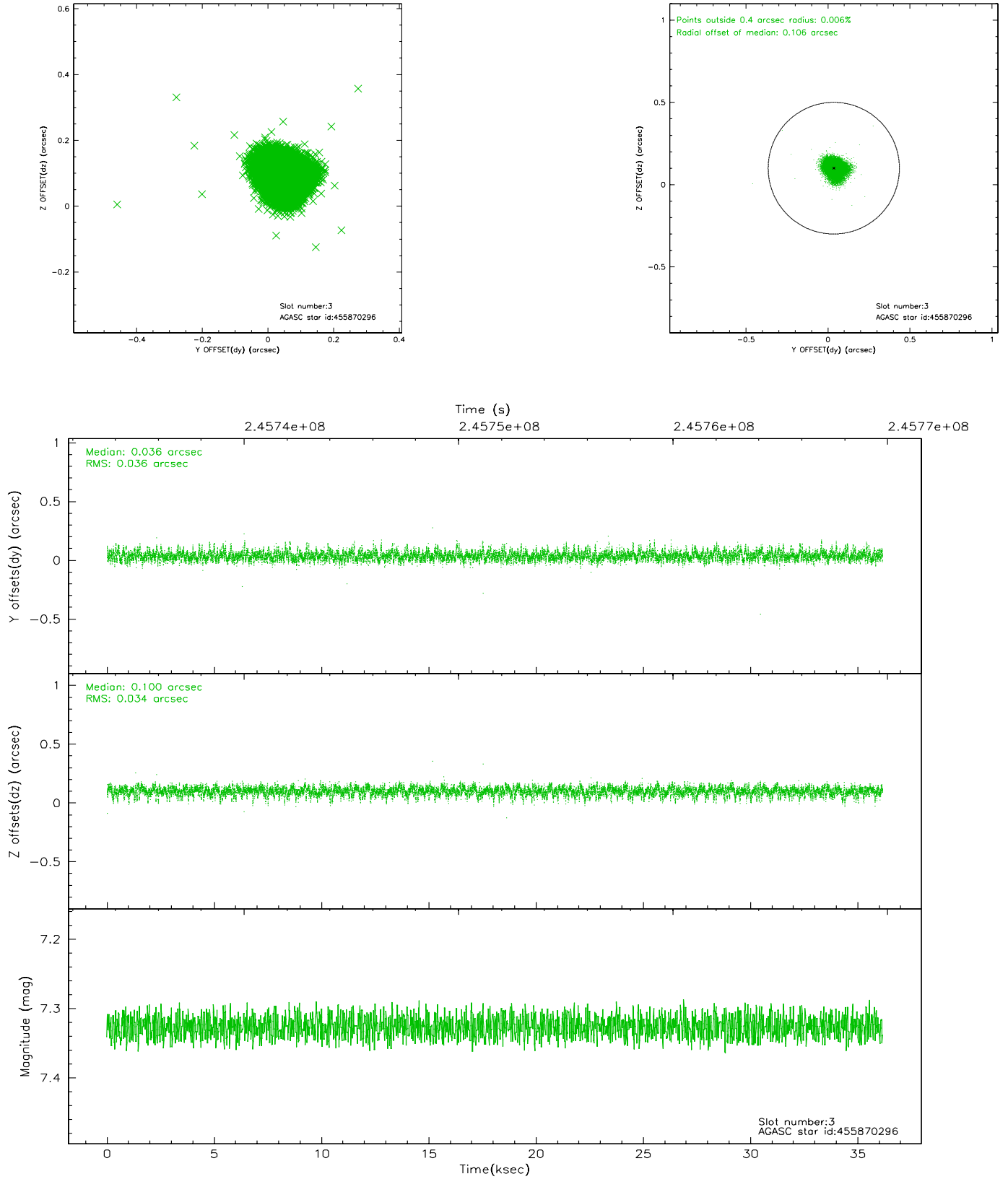
### Slot Statistics

slot	status	id	mag	n_pts	med_dy	med_dz	dr1	dr2	ra	dec	mean_y	mean_z
0	FID	ACIS-I-1	7.24	8819	0.025	0.001	0.010	0.044	0.000000	0.000000	933.25	-834.72
1	FID	ACIS-I-5	7.23	8820	-0.129	0.054	0.010	0.030	0.000000	0.000000	-1814.95	1062.85
2	FID	ACIS-I-6	7.25	8820	0.013	0.017	0.014	0.031	0.000000	0.000000	398.80	1707.32
3	GUIDE	455870296	7.33	17639	0.036	0.100	0.051	0.086	214.629779	52.033323	1477.79	-682.36
4	GUIDE	504894728	8.81	17631	0.142	0.190	0.056	0.094	213.220892	52.722550	-2151.04	921.56
5	GUIDE	505806936	7.01	17570	-0.004	-0.018	0.072	0.112	213.820815	52.535927	-713.80	600.29
6	GUIDE	505812376	7.66	17640	-0.199	-0.193	0.045	0.074	214.039537	52.937930	-624.48	2121.19
7	GUIDE	455871352	8.13	17574	0.017	-0.078	0.054	0.090	215.099961	52.172669	2344.15	80.46

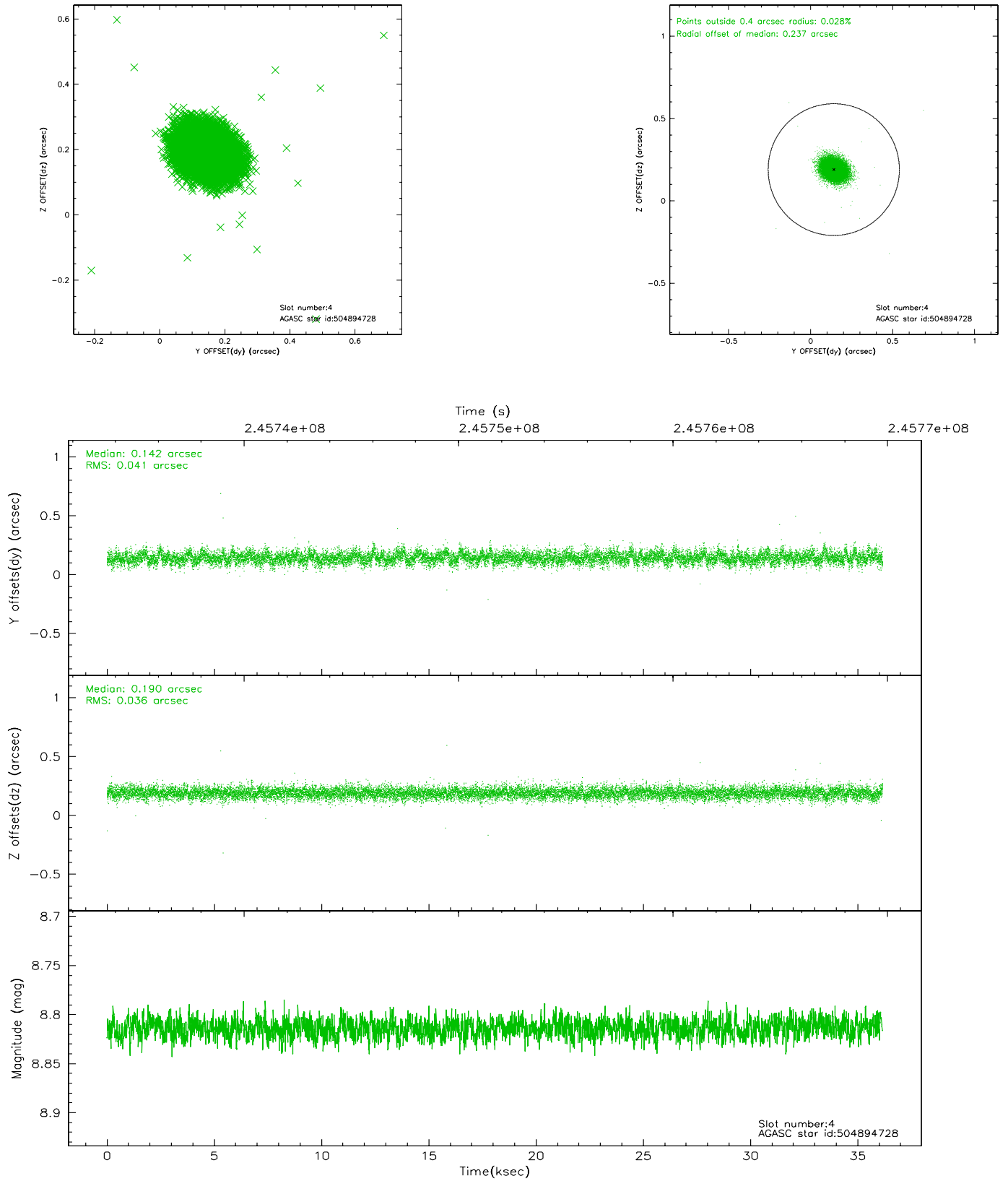


## 2.4 Star Slots

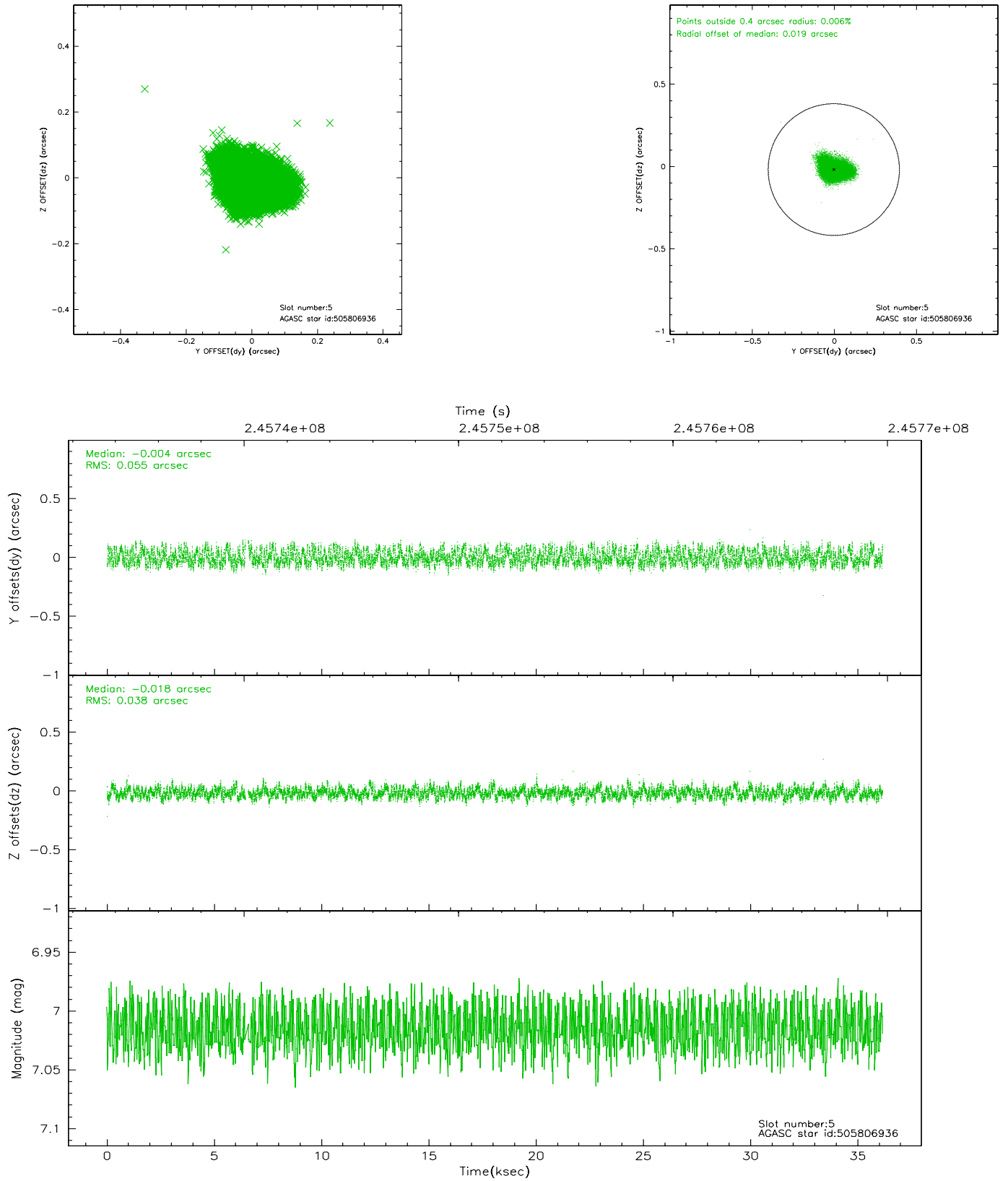
### 2.4.1 Slot 3



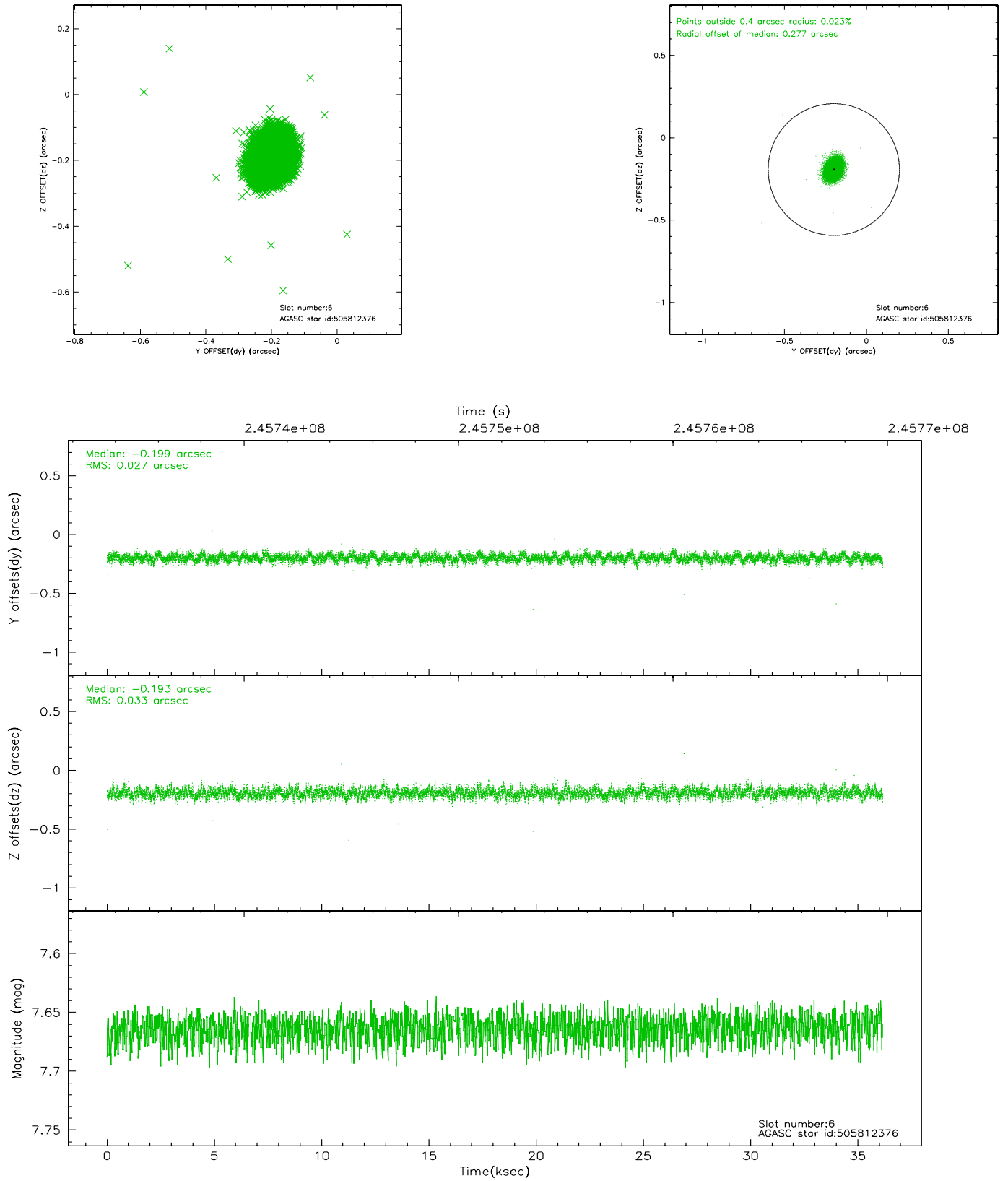
## 2.4.2 Slot 4



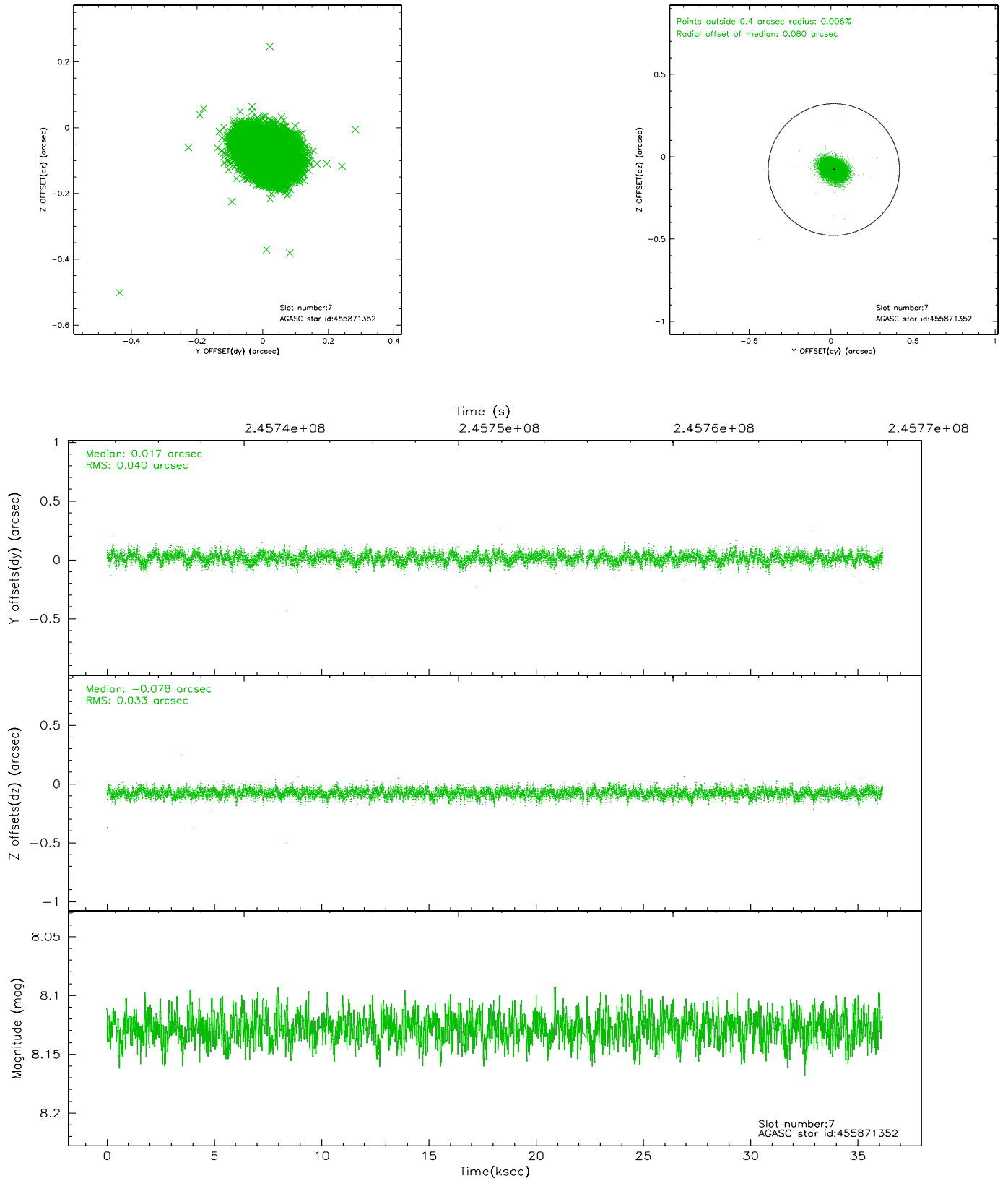
### 2.4.3 Slot 5



## 2.4.4 Slot 6

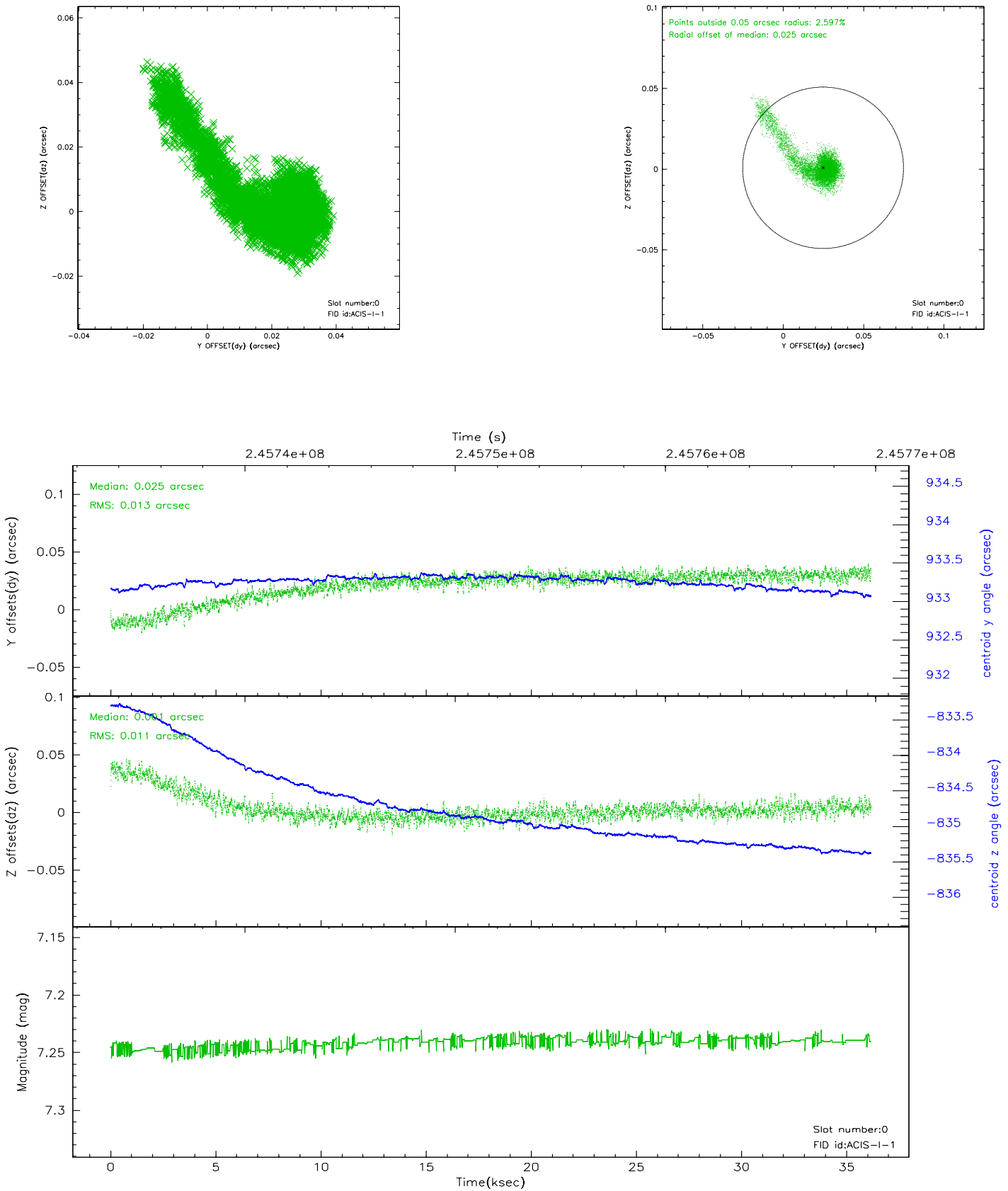


## 2.4.5 Slot 7

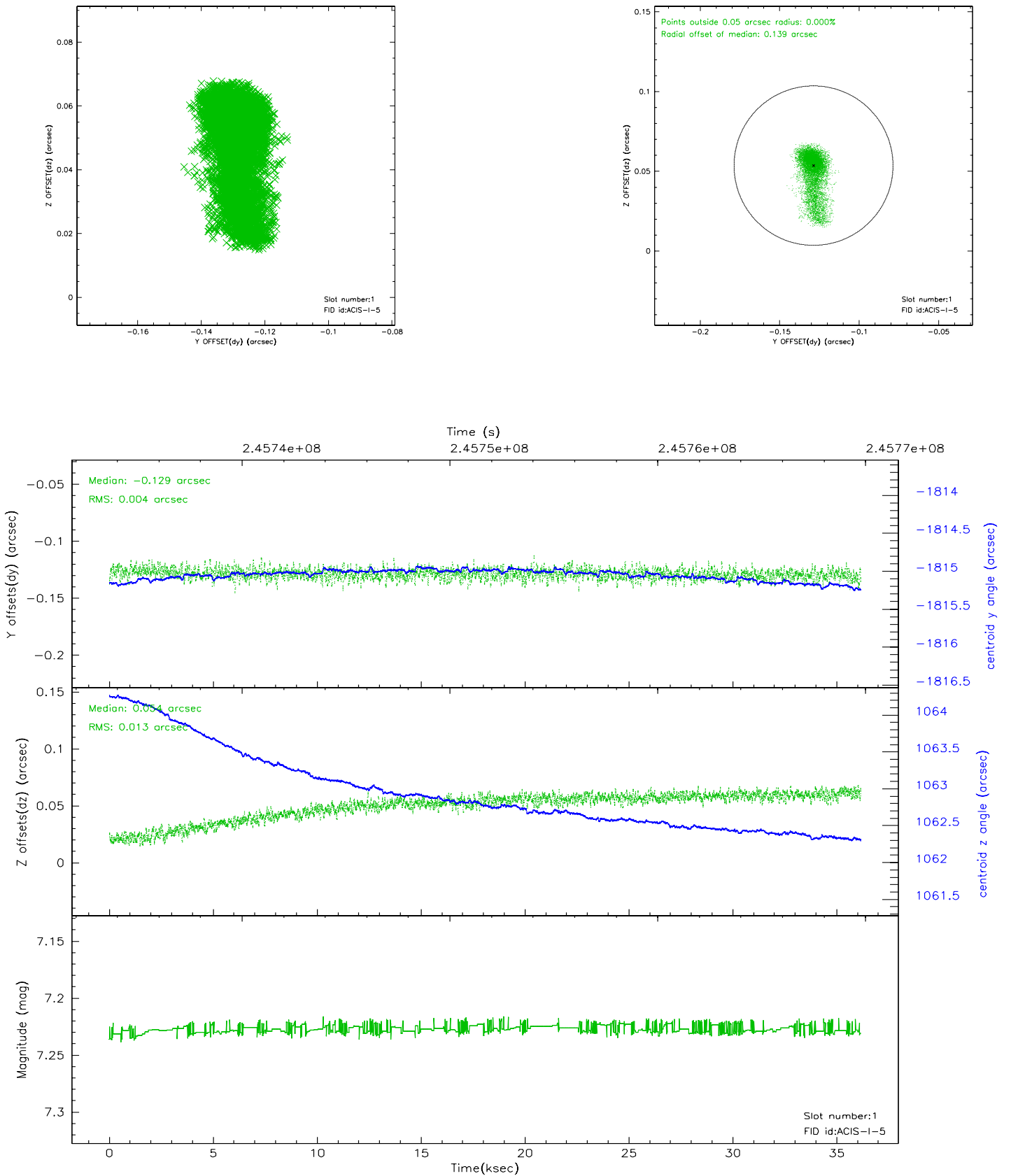


## 2.5 FID Slots

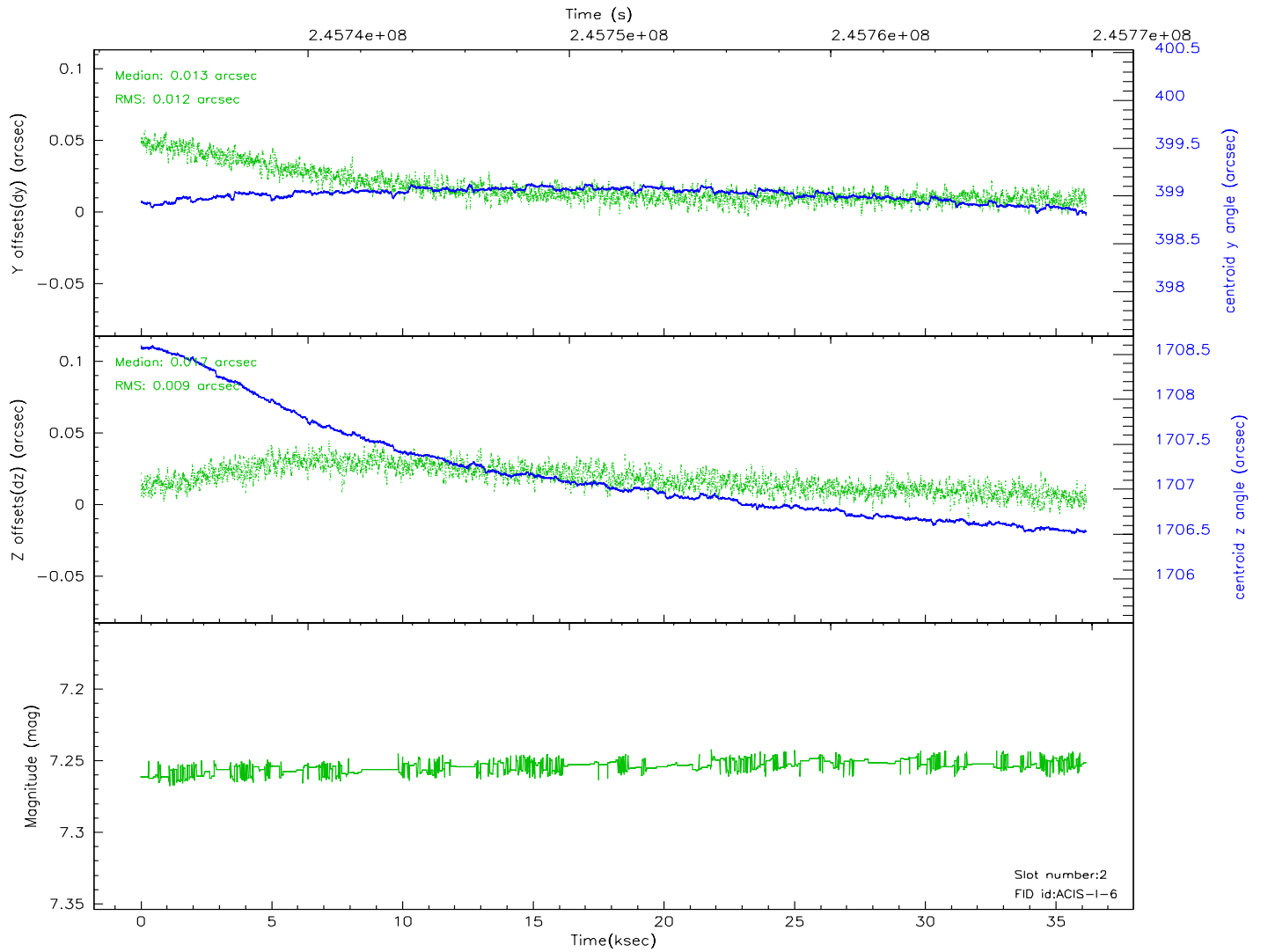
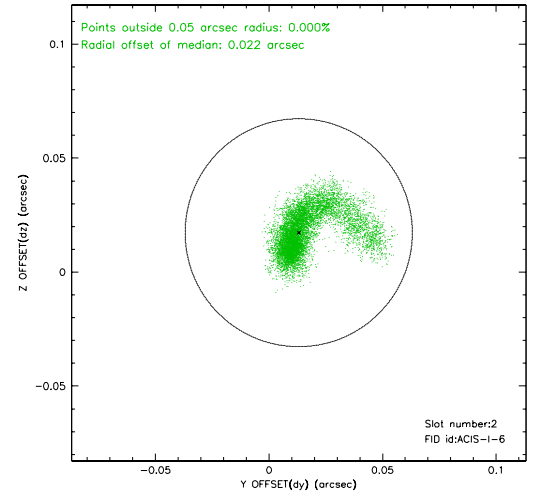
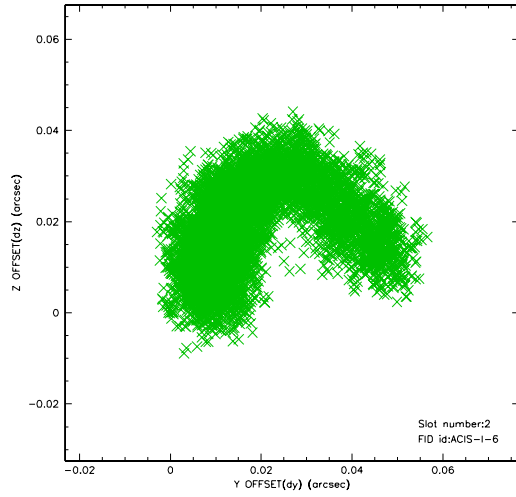
### 2.5.1 Slot 0



## 2.5.2 Slot 1

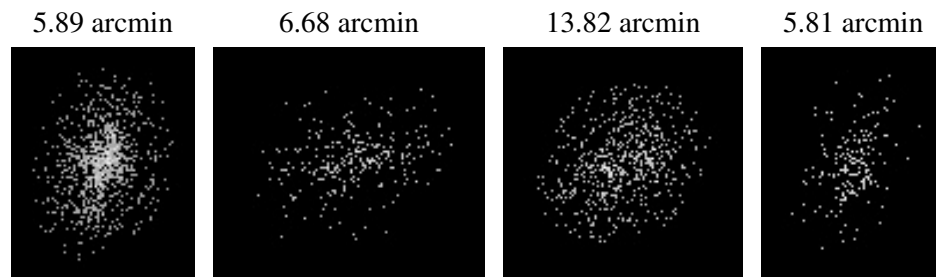


### 2.5.3 Slot 2





### 3 Point Sources



## A Summary

### A.1 Status

V&V Scientist	Beth Sundheim
V&V Date (YYYY-MM-DD)	2006.04.03
V&V Edition	1
V&V Disposition and Status	OK
V&V Charge Time	36.14901

### A.2 Comments

Roll constraint satisfied.