

V&V Reference Report

L2 ASCDS Version : 8.5.1.1

Observation 5844 - L2 Version 3
Chandra X-Ray Center

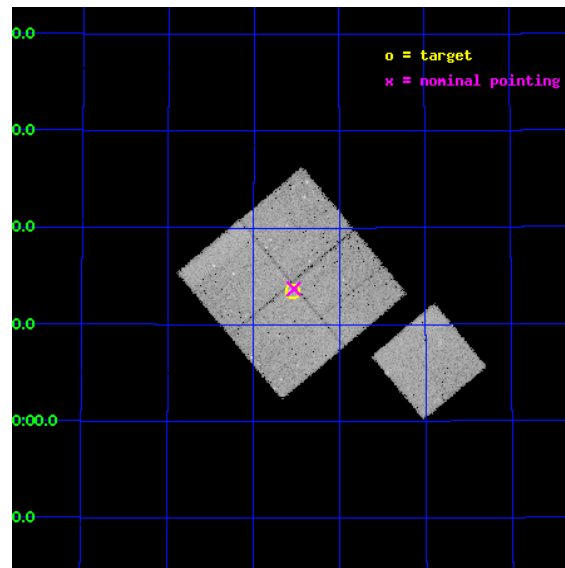
L2 Processing Date : Dec 20 2012

Contents

1	Front	2
2	OBI	3
2.1	OBI	3
2.1.1	Images	3
2.1.2	Bias	3
2.1.3	Parameters	4
2.1.4	Events	4
2.2	Compared Parameters	5
2.3	Aspect	6
2.4	Star Slots	9
2.4.1	Slot 3	9
2.4.2	Slot 4	10
2.4.3	Slot 5	11
2.4.4	Slot 6	12
2.4.5	Slot 7	13
2.5	FID Slots	14
2.5.1	Slot 0	14
2.5.2	Slot 1	15
2.5.3	Slot 2	16
A	Summary	17
A.1	Status	17
A.2	Comments	17

1 Front

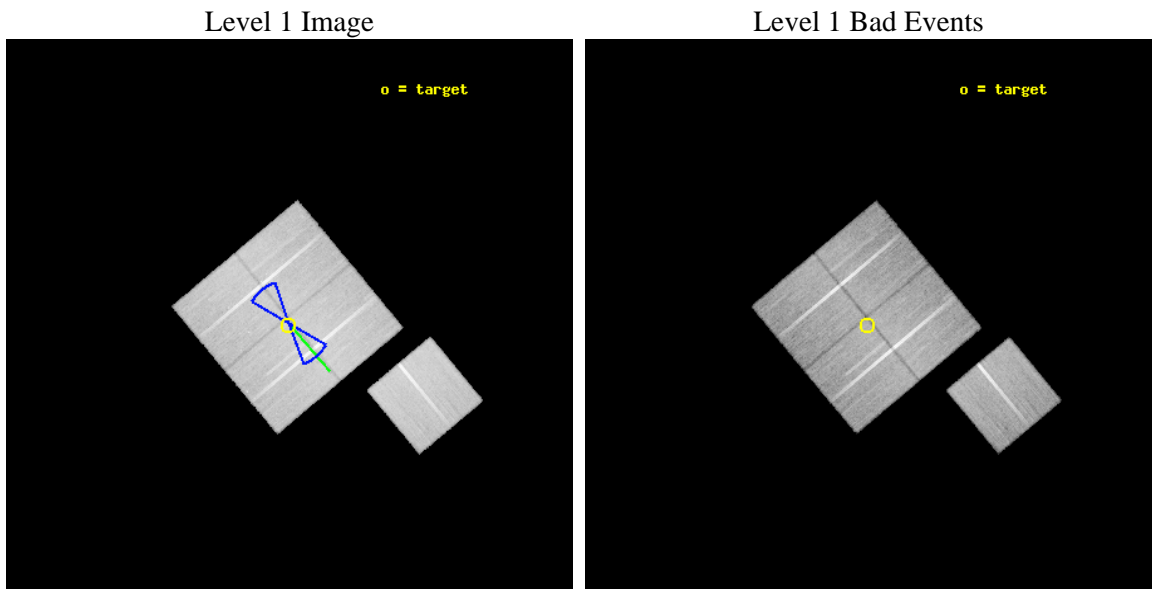
seq_num	900349	Sequence number
obs_id	5844	Observation id
title	Deep Chandra Imaging of the Extended Groth Strip: The Co-evolution of Black Holes and Galaxies	Proposal title
observer	Prof Kirpal Nandra	Principal investigator
object	EGS-2	Source name
dtcycle	0	
cycle	P	events from which exps? Prim/Second/Both
ra_targ	215.386246	Observer's specified target RA [deg]
dec_targ	53.224361	Observer's specified target Dec [deg]
ra_nom	215.38270304236	Nominal RA [deg]
dec_nom	53.228494193845	Nominal Dec [deg]
roll_nom	140.14291494749	Nominal Roll [deg]
revision	3	Processing version of data
ontime	46453.376960039	Sum of GTIs [s]
livetime	45846.429391578	Livetime [s]
ontime0	46450.236079186	Sum of GTIs [s]
ontime1	46447.094929785	Sum of GTIs [s]
ontime2	46453.376940042	Sum of GTIs [s]
ontime3	46453.376960039	Sum of GTIs [s]
ontime6	46462.799910635	Sum of GTIs [s]
l2events	119401	Number of level 2 events



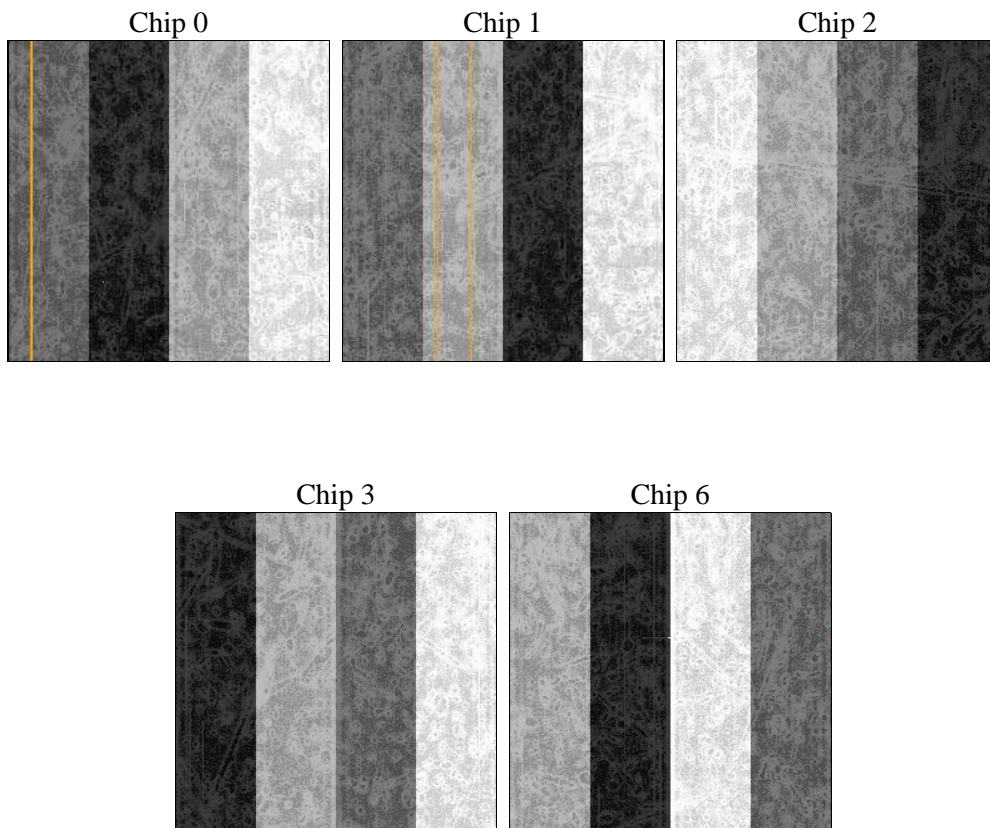
2 OBI

2.1 OBI

2.1.1 Images



2.1.2 Bias



2.1.3 Parameters

obi_num	0	Obi number	sched_exp_time	46400.000000	[s] Scheduled observation exposure time
ascdsver	8.5.1.1	Processing system revision	ontime	46453.376960039	Sum of GTIs [s]
caldsver	4.5.5	 	ontime0	46450.236079186	Sum of GTIs [s]
date	2012-12-20T21:20:30	Date and time of file creation	ontime1	46447.094929785	Sum of GTIs [s]
revision	3	Processing version of data	ontime2	46453.376940042	Sum of GTIs [s]
			ontime3	46453.376960039	Sum of GTIs [s]
			ontime6	46462.799910635	Sum of GTIs [s]
			l1events	1397942	Number of level 1 events

2.1.4 Events

	ccd 0	ccd 1	ccd 2	ccd 3	ccd 6
level 1 events	265619	264896	295093	281844	290490
rejected events	236651	232994	267759	255118	261391
rejected %	89%	87%	90%	90%	89%

	ccd 0	ccd 1	ccd 2	ccd 3	ccd 6
grade 0 events	10105	11587	9477	9358	10087
	3%	4%	3%	3%	3%
grade 1 events	142	133	141	182	117
	0%	0%	0%	0%	0%
grade 2 events	6852	7009	6469	5859	6310
	2%	2%	2%	2%	2%
grade 3 events	3359	3593	2995	3064	3231
	1%	1%	1%	1%	1%
grade 4 events	3143	3457	3135	3162	3152
	1%	1%	1%	1%	1%
grade 5 events	10180	11072	9586	11318	11357
	3%	4%	3%	4%	3%
grade 6 events	5514	6262	5261	5283	6323
	2%	2%	1%	1%	2%
grade 7 events	226324	221783	258029	243618	249913
	85%	83%	87%	86%	86%

2.2 Compared Parameters

Parameter	Planned	Actual
Instrument	ACIS	ACIS
Detector	ACIS-01236	ACIS-01236
Grating	NONE	NONE
Data mode	VFAINT	VFAINT
Observation mode	POINTING	POINTING
[deg] Pointing RA	215.427811	215.3827030423631
[deg] Pointing Dec	53.223888	53.22849419384542
[deg] Pointing Roll	139.898090	140.1429149474895
[deg] Roll angle	50.756000	50.756000
[deg] Roll tolerance	20.000000	20.000000
Roll constraint allows 180D rotation	Y	Y
[mm] SIM focus pos	-0.782348	-0.7809083437167272
[mm] SIM defocus	0	0.001439871863259334
[mm] SIM translation stage pos	-233.592463	-233.5874344608287
[mm] SIM translation stage offset	0	-0.005018542100998502
[s] Observation start time (MET)	227832796.184000	227831860.79934
Observation start date	2005-03-21T22:52:12	2005-03-21T22:37:40
[s] Observation end time (MET)	227879196.184000	227879652.96401
Observation end date	2005-03-22T11:45:32	2005-03-22T11:54:12
Read mode	TIMED	TIMED

Parameter	Planned	Actual
Obspar format version number	7	7
Obspar file type	PREDICTED	ACTUAL
Obspar update status	NONE	UPDATED
Number of optional ACIS chips dropped	0	0
On-chip summing requested	N	N
Subarray requested	NONE	NONE
Alternating exposures requested	N	N
[s] Primary exposure time	0.000000	3.1

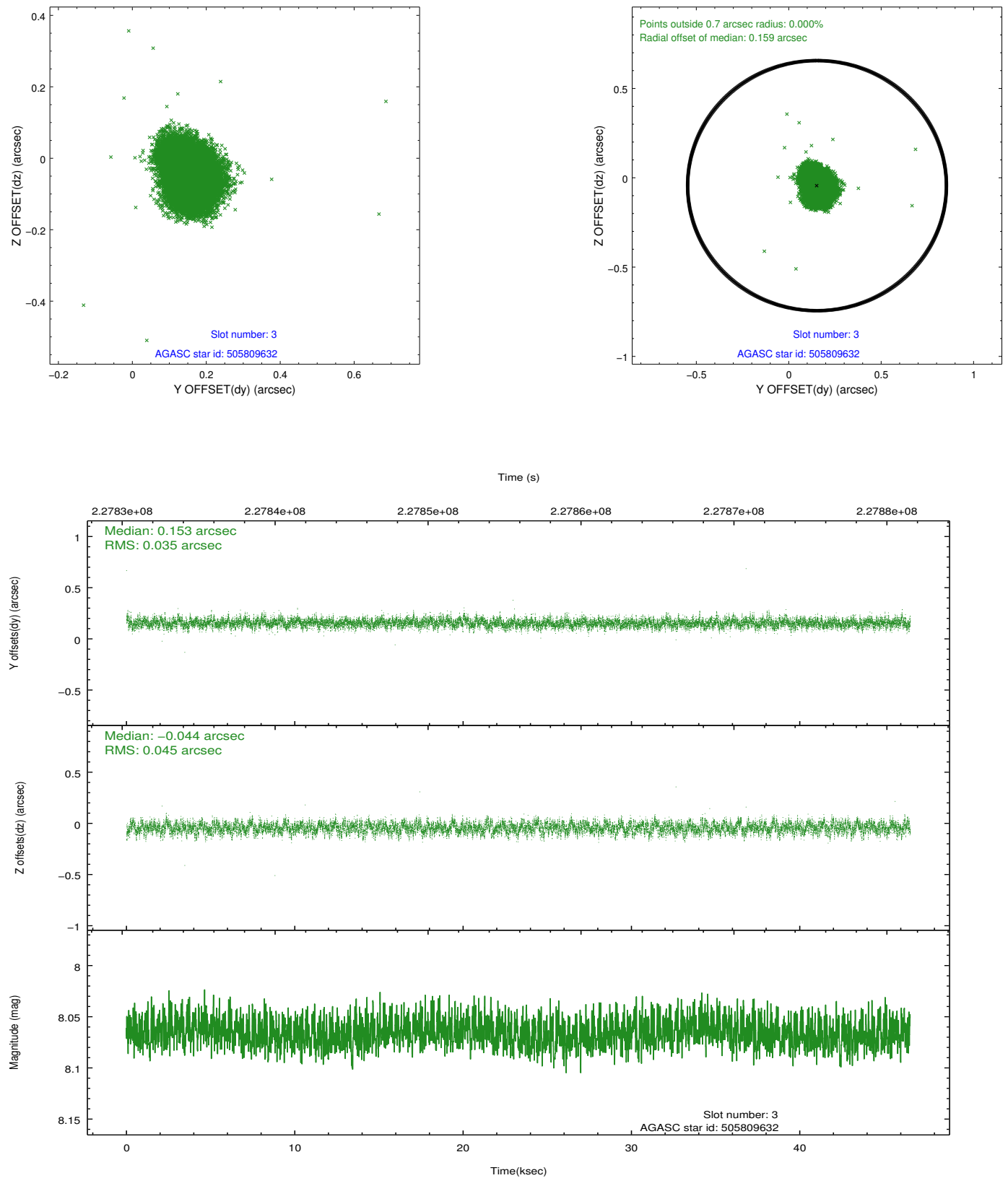
2.3 Aspect

Slot Statistics

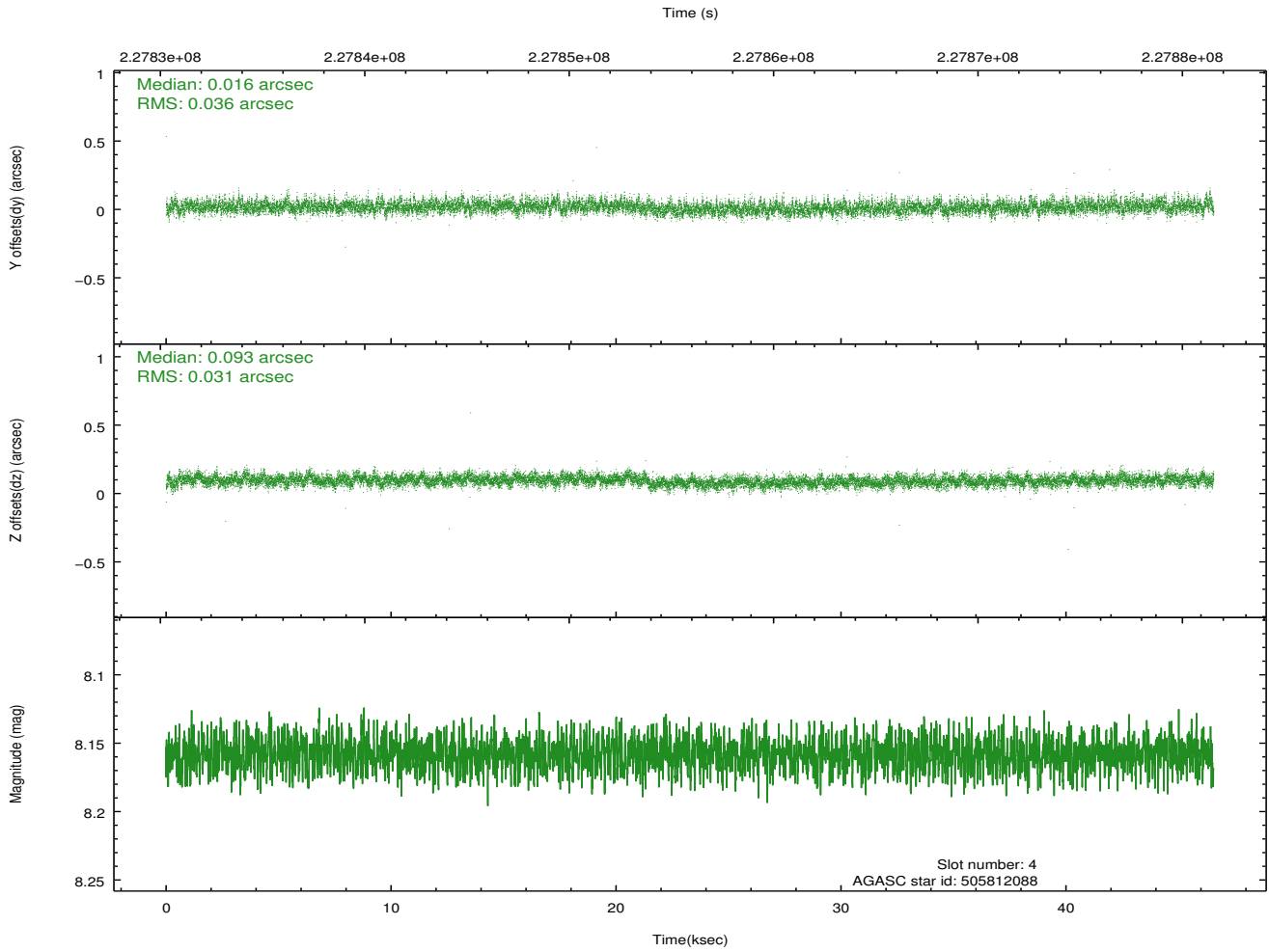
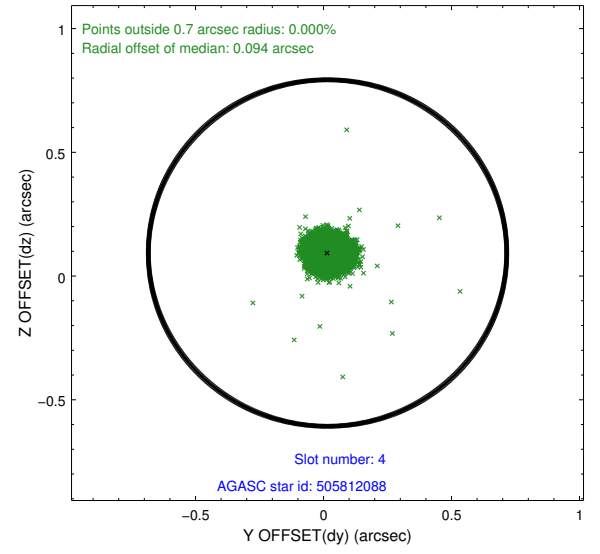
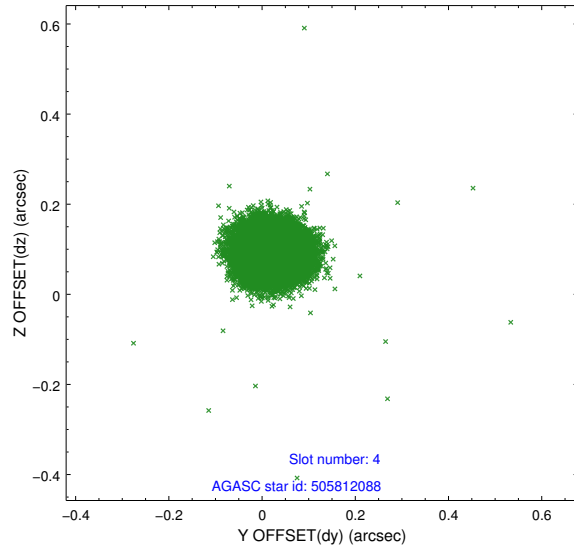
slot	status	id	mag	n_pts	med_dy	med_dz	dr1	dr2	ra	dec	mean_y	mean_z
0	FID	ACIS-I-1	7.24	11358	0.006	0.031	0.014	0.020	0.000000	0.000000	933.78	-832.70
1	FID	ACIS-I-5	7.23	11358	-0.162	0.031	0.017	0.025	0.000000	0.000000	-1814.52	1064.78
2	FID	ACIS-I-6	7.25	11358	0.067	0.007	0.011	0.019	0.000000	0.000000	399.37	1709.26
3	GUIDE	505809632	8.07	22713	0.153	-0.044	0.060	0.098	215.499426	53.521185	572.71	-917.13
4	GUIDE	505812088	8.16	22713	0.016	0.093	0.050	0.082	214.186617	53.263562	2151.40	1595.08
5	GUIDE	505815088	7.28	22714	-0.016	-0.051	0.057	0.088	216.315963	53.584954	-607.01	-2225.57
6	GUIDE	505815928	8.31	22708	-0.033	0.029	0.063	0.102	216.234742	53.074559	-1674.59	-720.36
7	GUIDE	505817384	8.07	22705	-0.120	-0.027	0.073	0.116	216.827424	53.311152	-2080.23	-2202.09

2.4 Star Slots

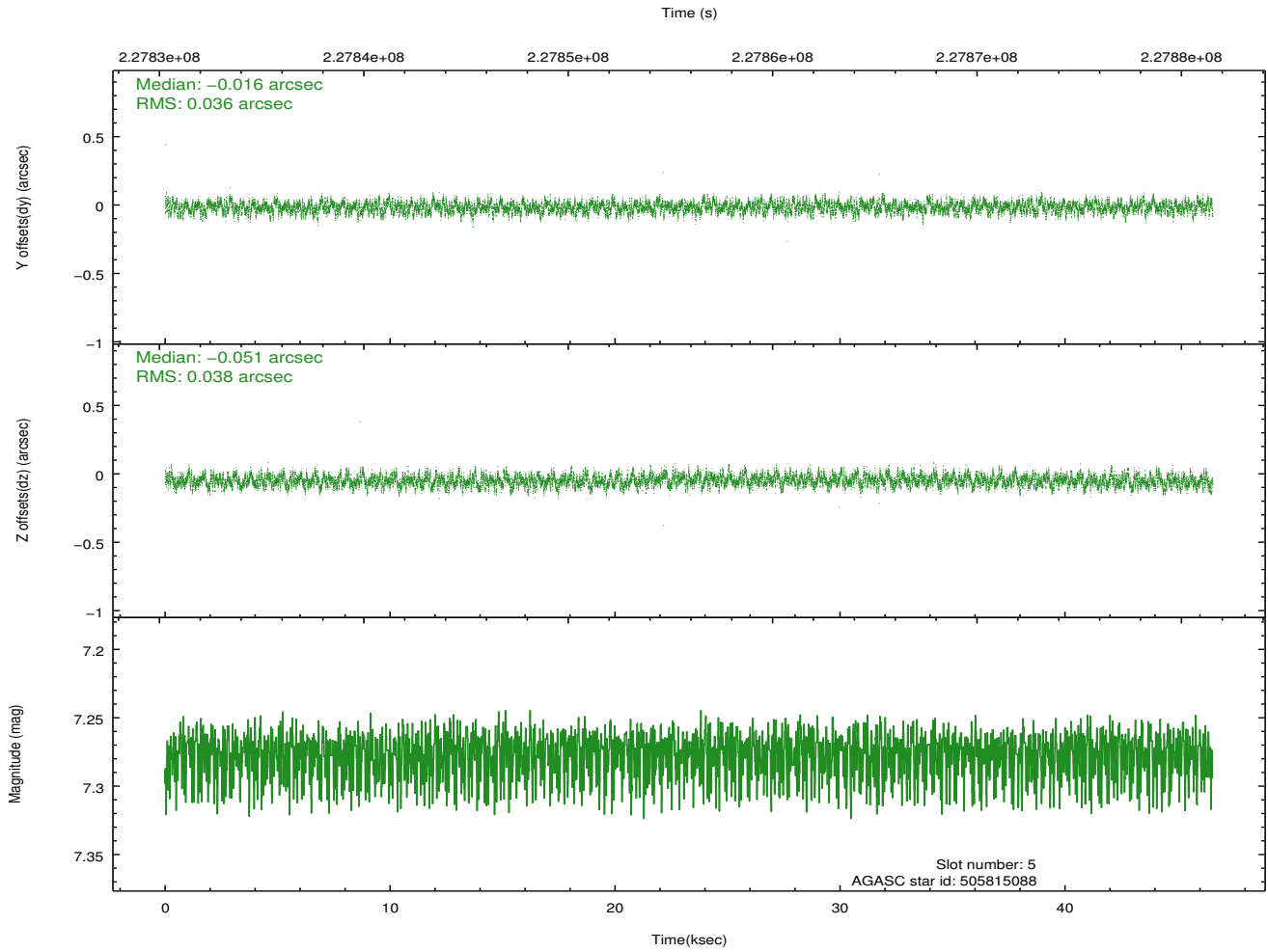
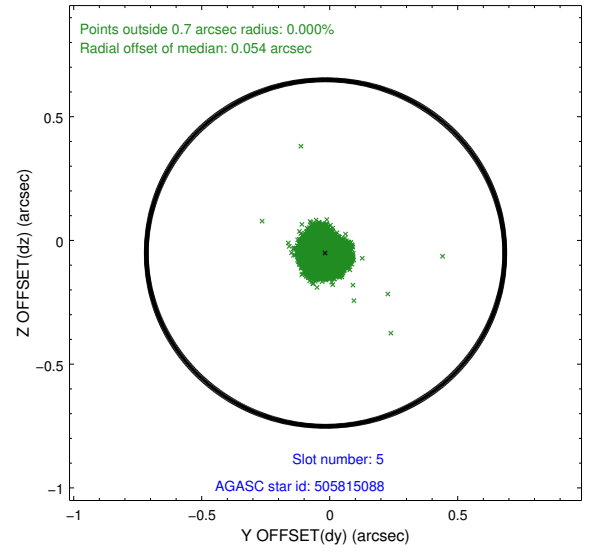
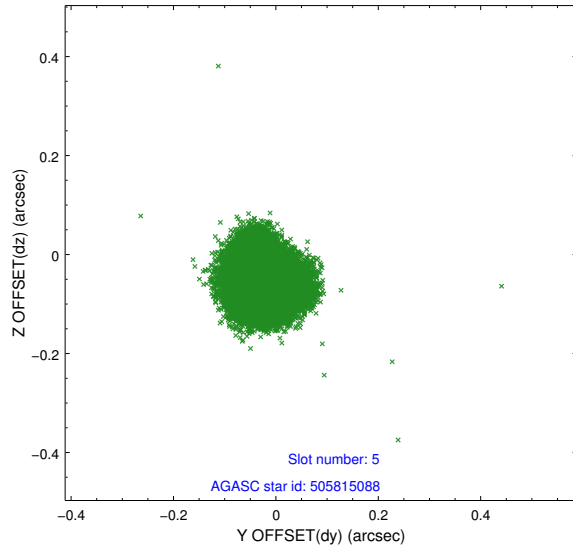
2.4.1 Slot 3



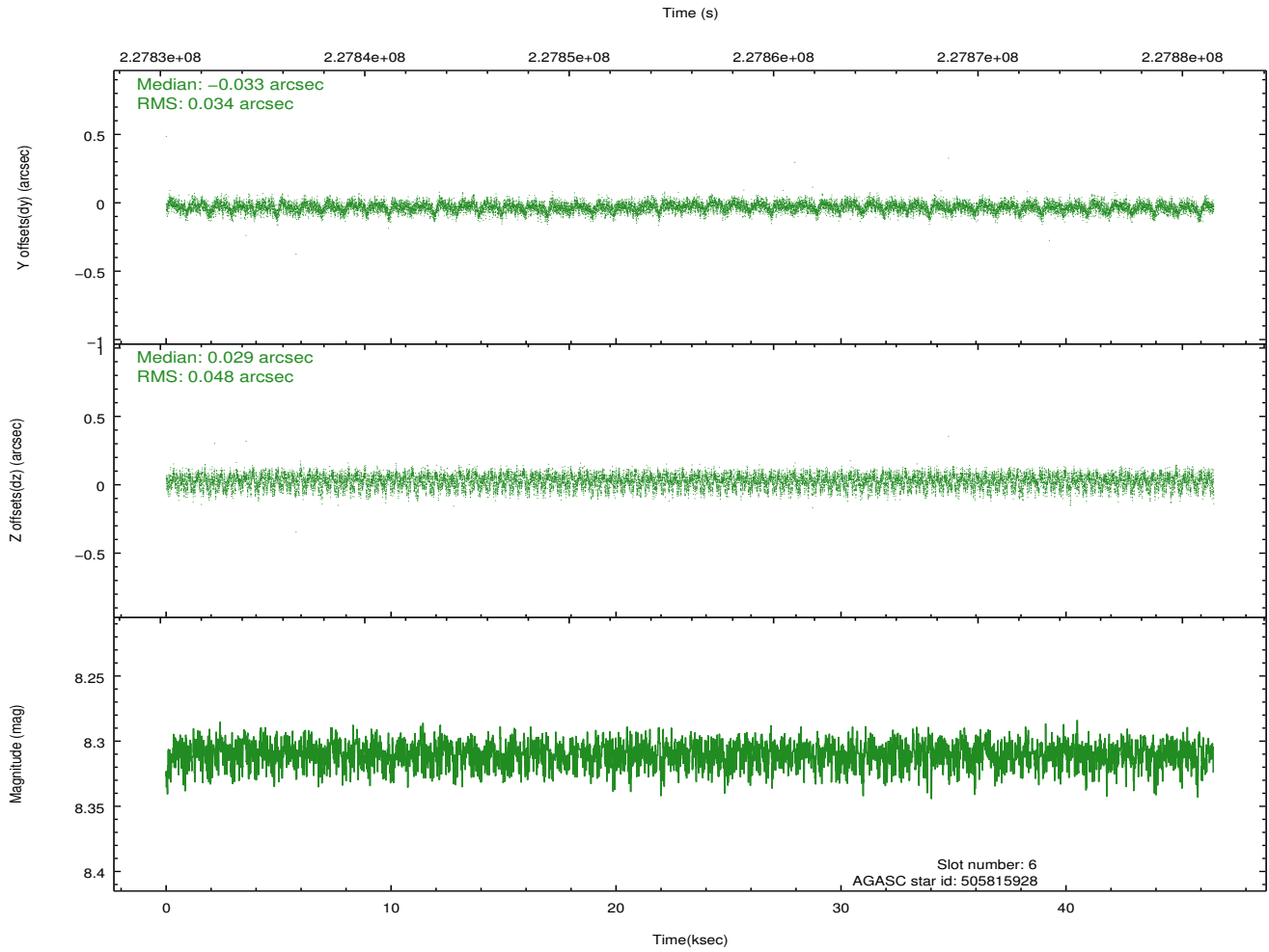
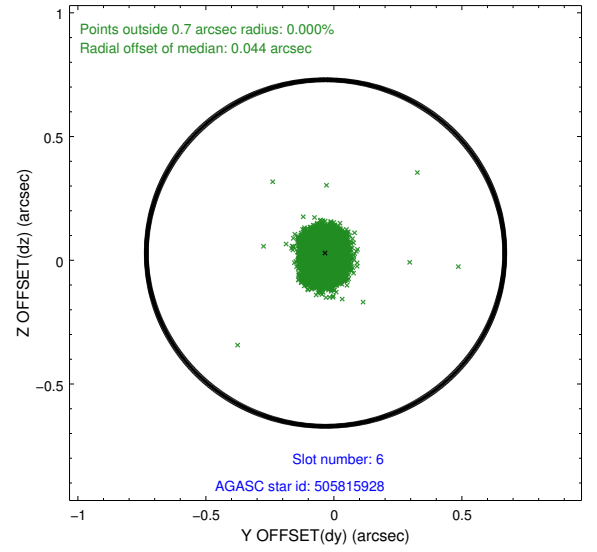
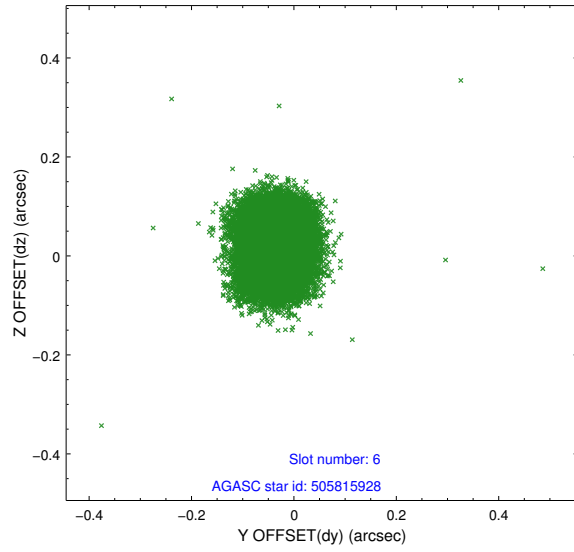
2.4.2 Slot 4



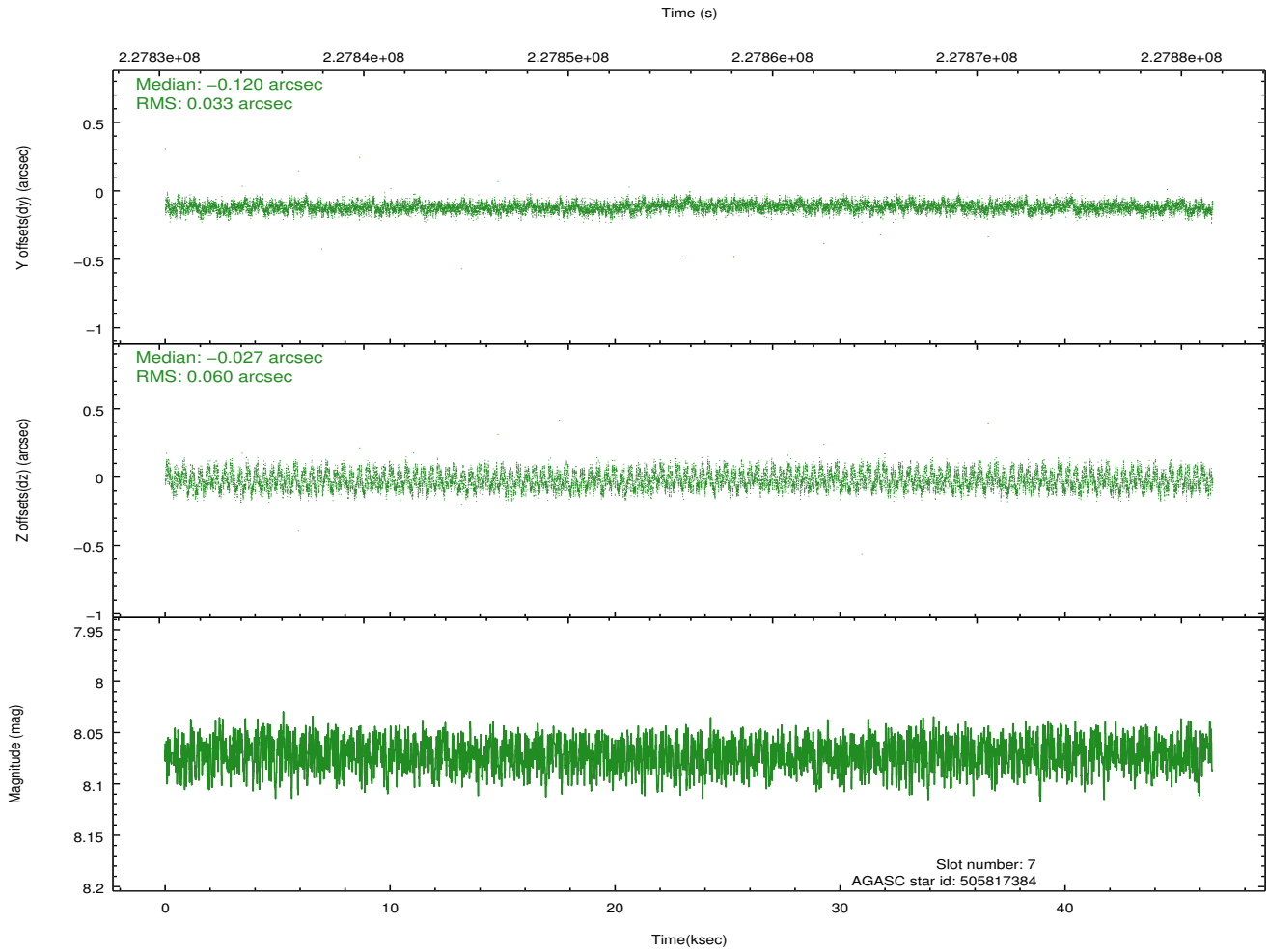
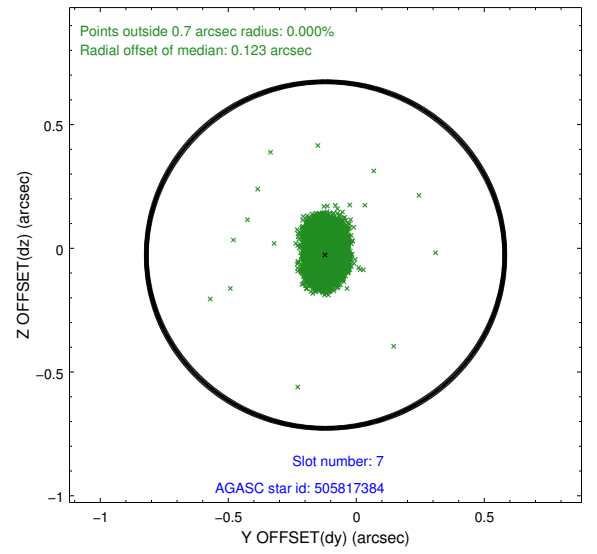
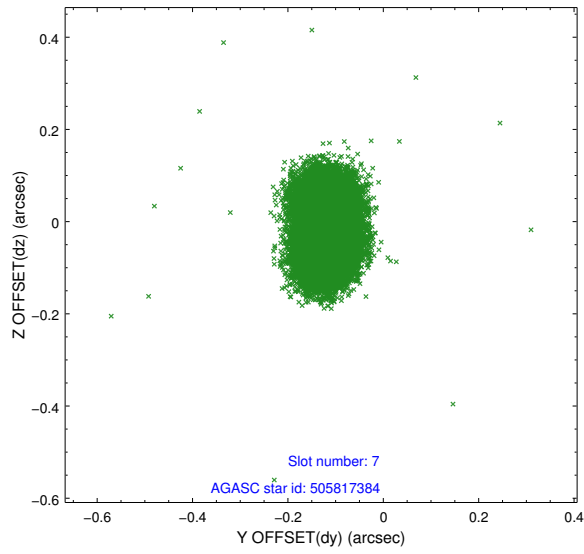
2.4.3 Slot 5



2.4.4 Slot 6

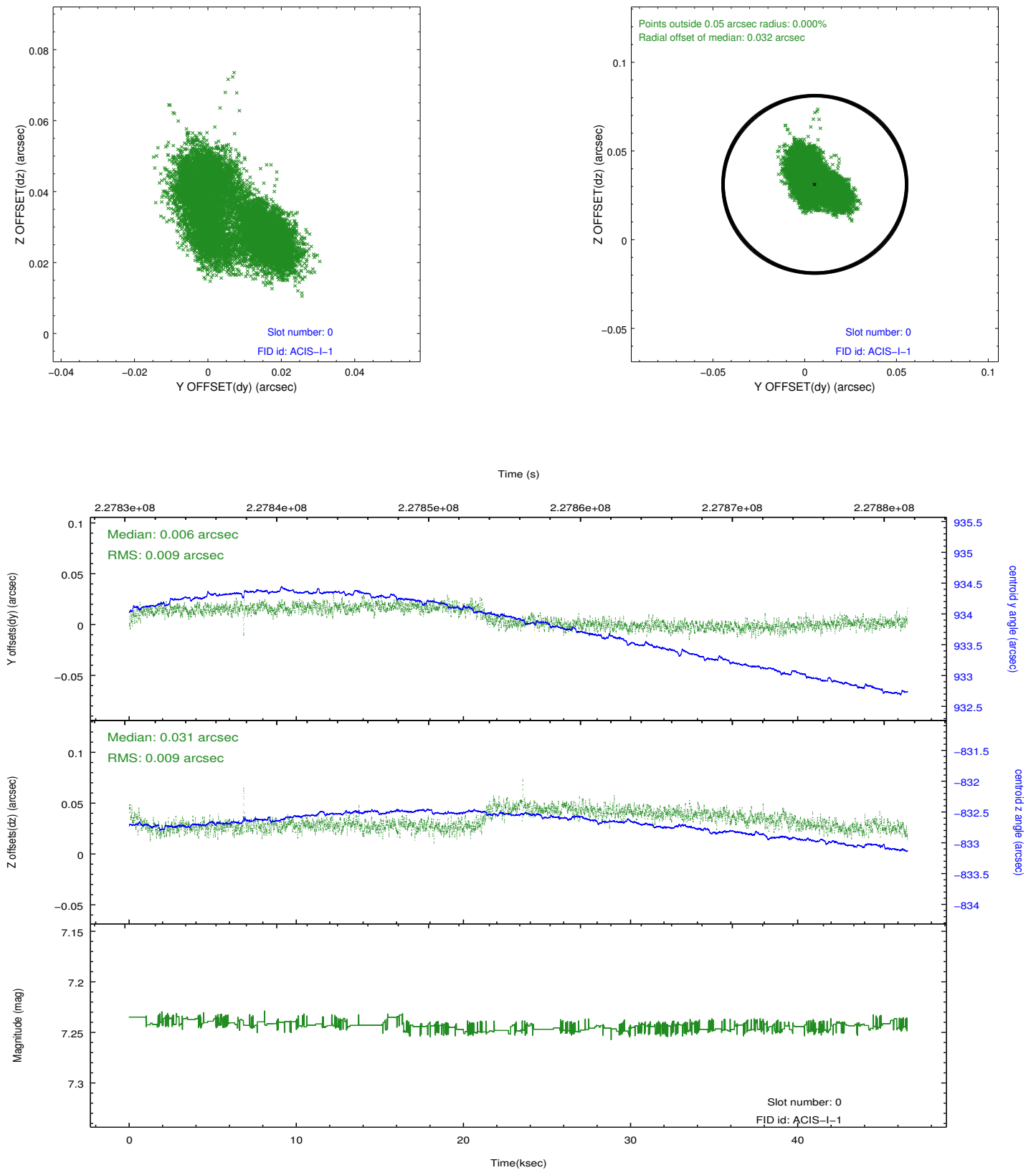


2.4.5 Slot 7

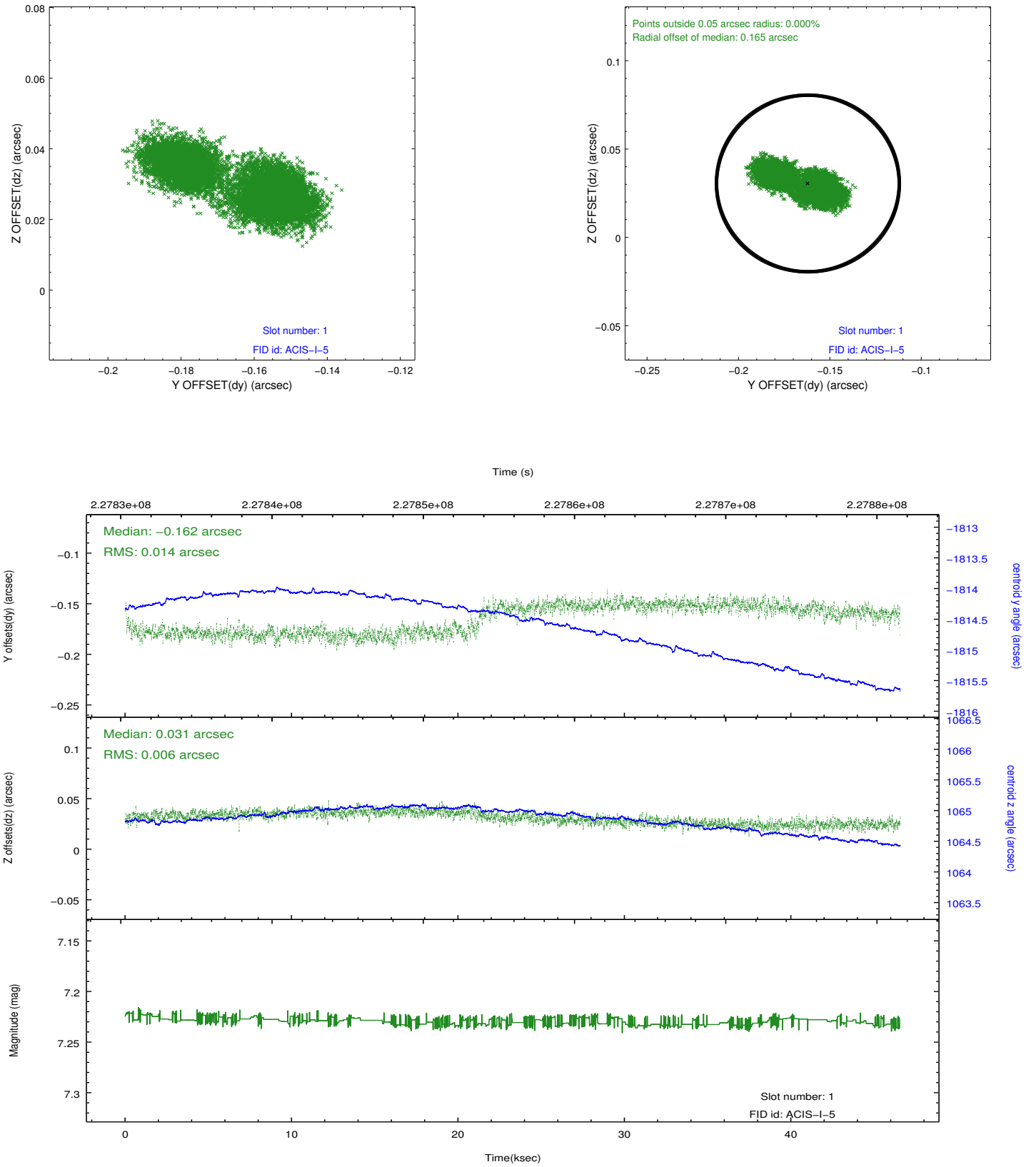


2.5 FID Slots

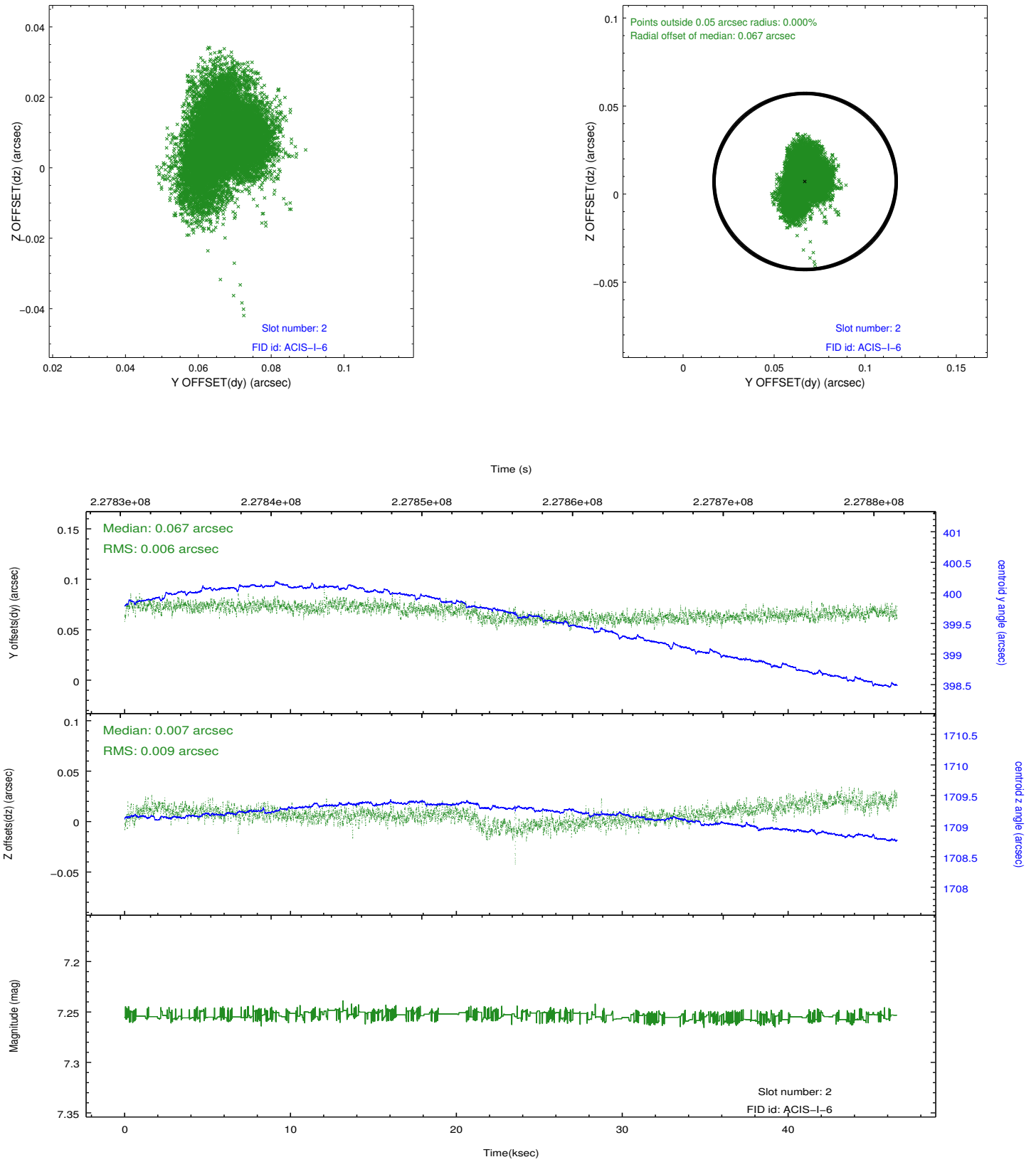
2.5.1 Slot 0



2.5.2 Slot 1



2.5.3 Slot 2



A Summary

A.1 Status

V&V Scientist	Jen Lauer
V&V Date (YYYY-MM-DD)	2013.01.31
V&V Edition	1
V&V Disposition and Status	OK
V&V Charge Time	46.45337

A.2 Comments

Roll constraint met.