

V&V Reference Report

L2 ASCDS Version : 8.5.1.1

Observation 6394 - L2 Version 4
Chandra X-Ray Center

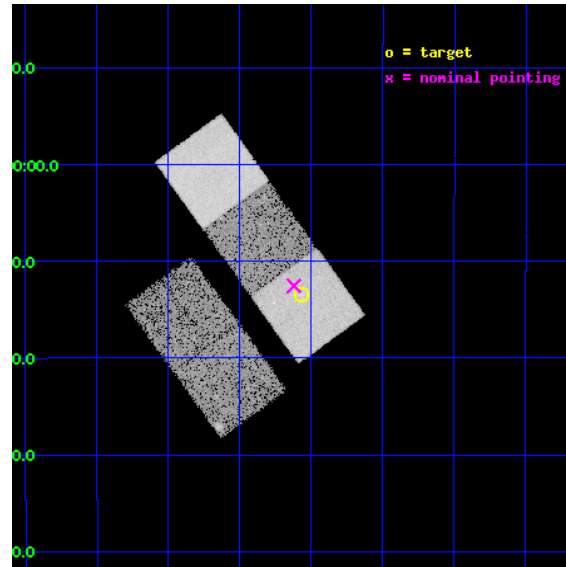
L2 Processing Date : Mar 8 2013

Contents

1	Front	2
2	OBI	3
2.1	OBI	3
2.1.1	Images	3
2.1.2	Bias	3
2.1.3	Parameters	4
2.1.4	Events	4
2.2	Compared Parameters	5
2.3	Aspect	6
2.4	Star Slots	9
2.4.1	Slot 3	9
2.4.2	Slot 4	10
2.4.3	Slot 5	11
2.4.4	Slot 6	12
2.4.5	Slot 7	13
2.5	FID Slots	14
2.5.1	Slot 0	14
2.5.2	Slot 1	15
2.5.3	Slot 2	16
A	Summary	17
A.1	Status	17
A.2	Comments	17

1 Front

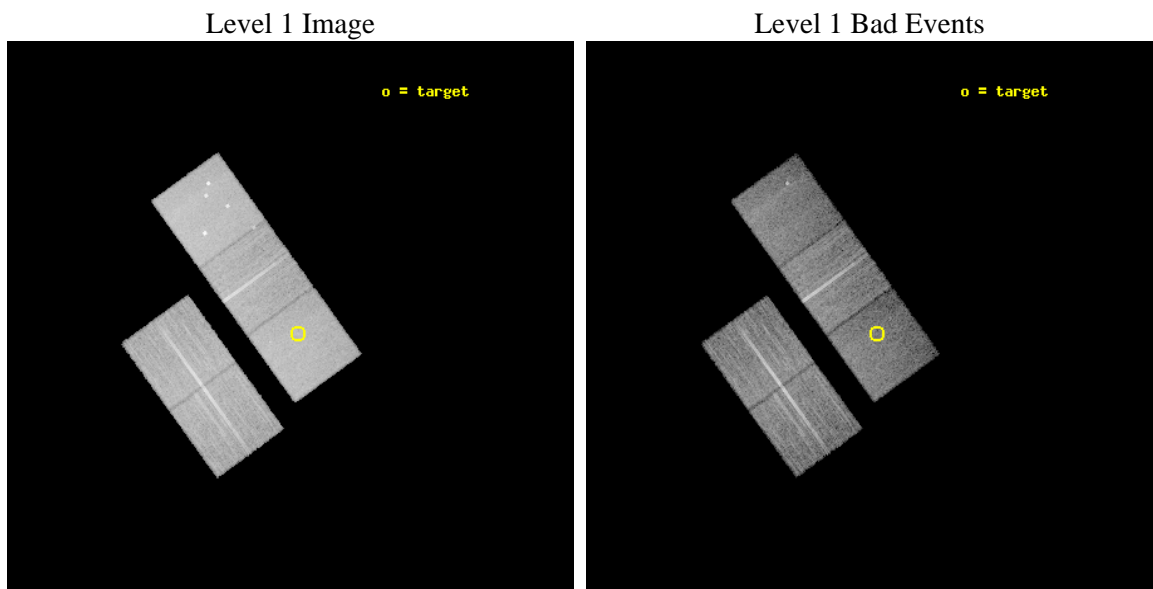
seq_num	800500	Sequence number
obs_id	6394	Observation id
title	A detailed study of a $z>1$ galaxy cluster	Proposal title
observer	Dr Laurence Jones	Principal investigator
object	XLSSJ022404.0-041328	Source name
dtcycle	0	
cycle	P	events from which exps? Prim/Second/Both
ra_targ	36.017083	Observer's specified target RA [deg]
dec_targ	-4.224694	Observer's specified target Dec [deg]
ra_nom	36.030652774847	Nominal RA [deg]
dec_nom	-4.2089097290795	Nominal Dec [deg]
roll_nom	54.157587361941	Nominal Roll [deg]
revision	4	Processing version of data
ontime	17772.299965799	Sum of GTIs [s]
livetime	17540.091782969	Livetime [s]
ontime2	17772.299965799	Sum of GTIs [s]
ontime3	17772.299965799	Sum of GTIs [s]
ontime5	17772.299965799	Sum of GTIs [s]
ontime6	17769.158995539	Sum of GTIs [s]
ontime7	17772.299965799	Sum of GTIs [s]
l2events	152597	Number of level 2 events



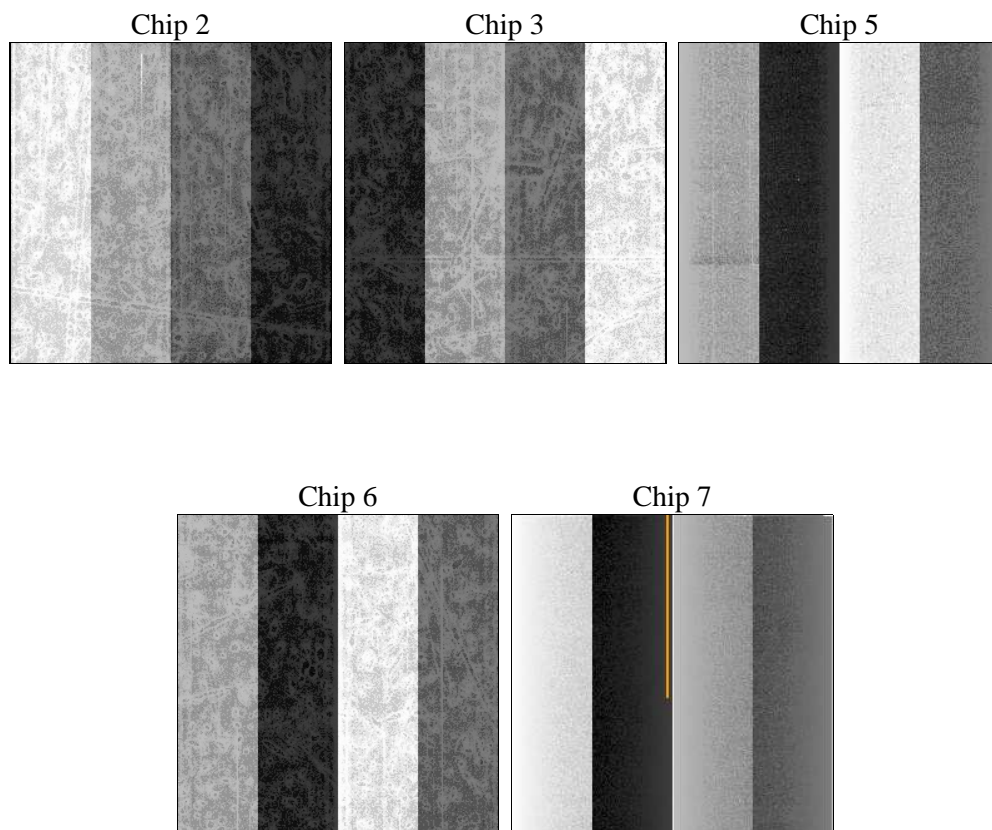
2 OBI

2.1 OBI

2.1.1 Images



2.1.2 Bias



2.1.3 Parameters

obi_num	0	Obi number	sched_exp_time	17600.000000	[s] Scheduled observation exposure time
ascdsver	8.5.1.1	Processing system revision	ontime	17772.299965799	Sum of GTIs [s]
caldsver	4.5.6	 	ontime2	17772.299965799	Sum of GTIs [s]
date	2013-03-07T23:03:55	Date and time of file creation	ontime3	17772.299965799	Sum of GTIs [s]
revision	4	Processing version of data	ontime5	17772.299965799	Sum of GTIs [s]
			ontime6	17769.158995539	Sum of GTIs [s]
			ontime7	17772.299965799	Sum of GTIs [s]
			l1events	647283	Number of level 1 events

2.1.4 Events

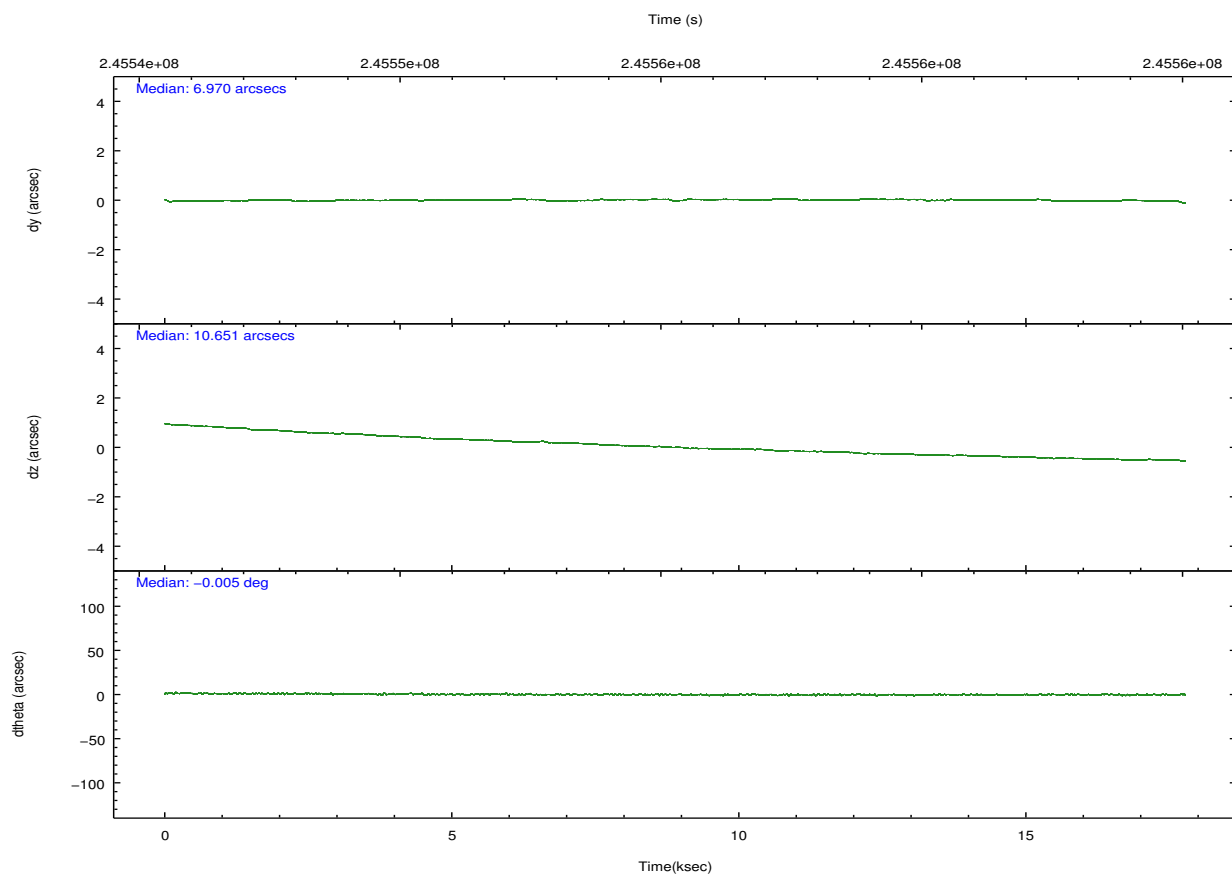
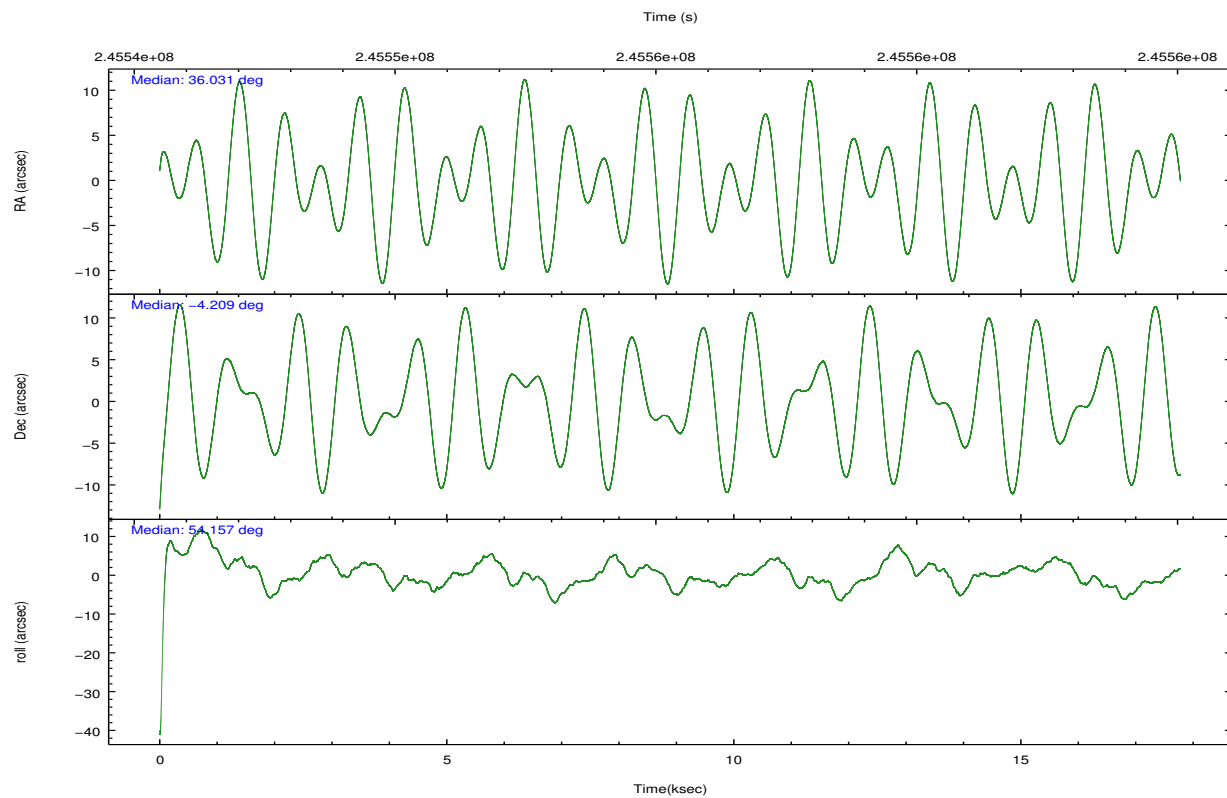
	ccd 2	ccd 3	ccd 5	ccd 6	ccd 7
level 1 events	121888	113945	163248	117689	130513
rejected events	111195	103348	86232	106012	74793
rejected %	91%	90%	52%	90%	57%

	ccd 2	ccd 3	ccd 5	ccd 6	ccd 7
grade 0 events	4011	3932	9326	4250	5191
	3%	3%	5%	3%	3%
grade 1 events	51	56	160	51	104
	0%	0%	0%	0%	0%
grade 2 events	2690	2408	23500	2686	11720
	2%	2%	14%	2%	8%
grade 3 events	1248	1291	3609	1383	5491
	1%	1%	2%	1%	4%
grade 4 events	1251	1252	3442	1363	5552
	1%	1%	2%	1%	4%
grade 5 events	3801	4631	13315	4740	13774
	3%	4%	8%	4%	10%
grade 6 events	2017	2207	41323	2560	30723
	1%	1%	25%	2%	23%
grade 7 events	106819	98168	68573	100656	57958
	87%	86%	42%	85%	44%

2.2 Compared Parameters

Parameter	Planned	Actual	Parameter	Planned	Actual
Instrument	ACIS	ACIS	Obspar format version number	7	7
Detector	ACIS-23567	ACIS-23567	Obspar file type	PREDICTED	ACTUAL
Grating	NONE	NONE	Obspar update status	NONE	UPDATED
Data mode	VFAINT	VFAINT	Number of optional ACIS chips dropped	0	0
Observation mode	POINTING	POINTING	On-chip summing requested	N	N
[deg] Pointing RA	36.028223	36.03065277484659	Subarray requested	NONE	NONE
[deg] Pointing Dec	-4.236056	-4.208909729079537	Alternating exposures requested	N	N
[deg] Pointing Roll	54.000825	54.15758736194105	[s] Primary exposure time	0.000000	3.1
[mm] SIM focus pos	-0.684267	-0.6828225247311905			
[mm] SIM defocus	0	0.001444936568705701			
[mm] SIM translation stage pos	-190.132523	-190.1425803651734			
[mm] SIM translation stage offset	0	0.01005778216563158			
[s] Observation start time (MET)	245546563.184000	245545118.25904			
Observation start date	2005-10-12T23:21:39	2005-10-12T22:58:38			
[s] Observation end time (MET)	245564163.184000	245565369.69747			
Observation end date	2005-10-13T04:14:59	2005-10-13T04:36:09			
Read mode	TIMED	TIMED			

2.3 Aspect

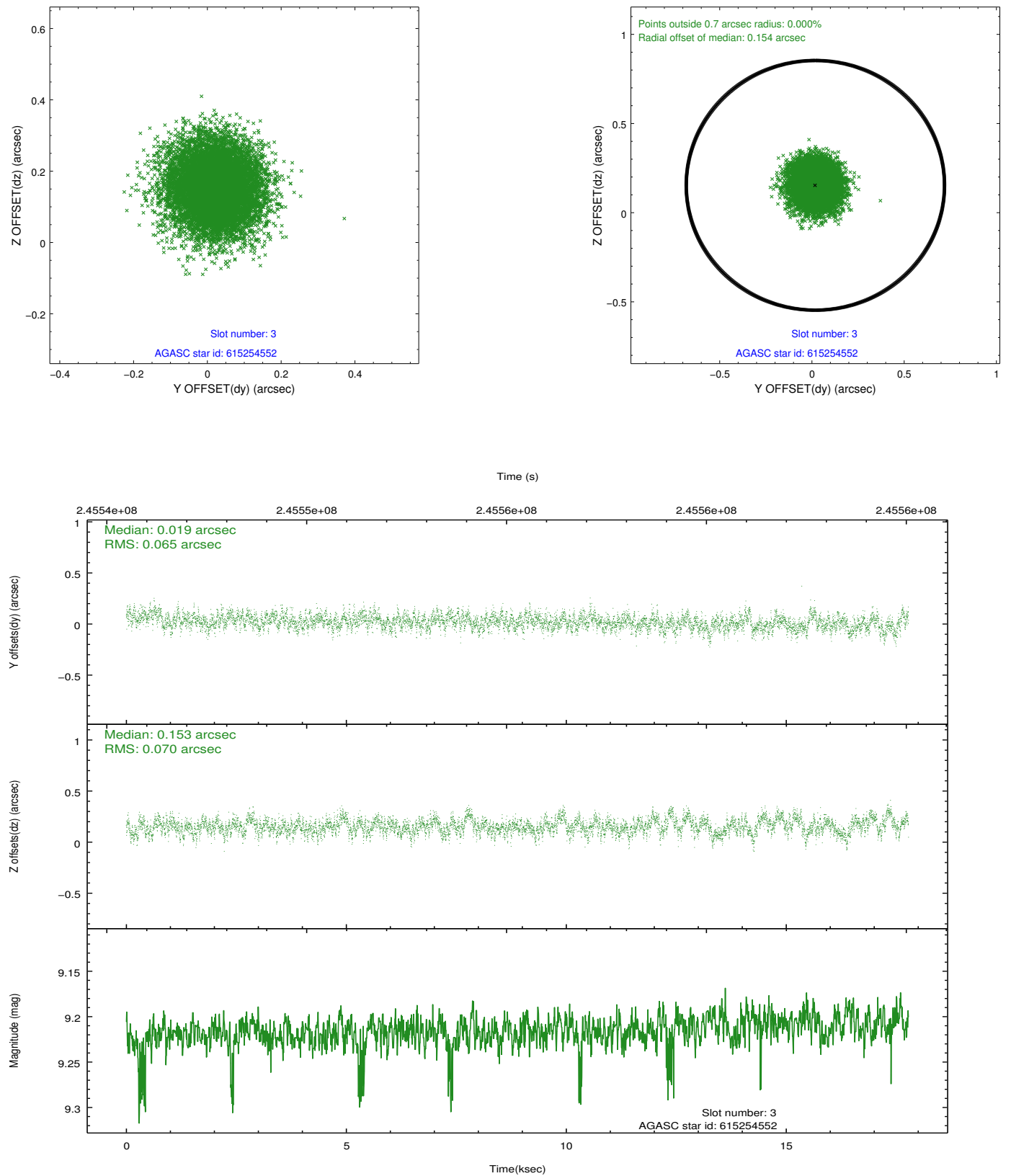


Slot Statistics

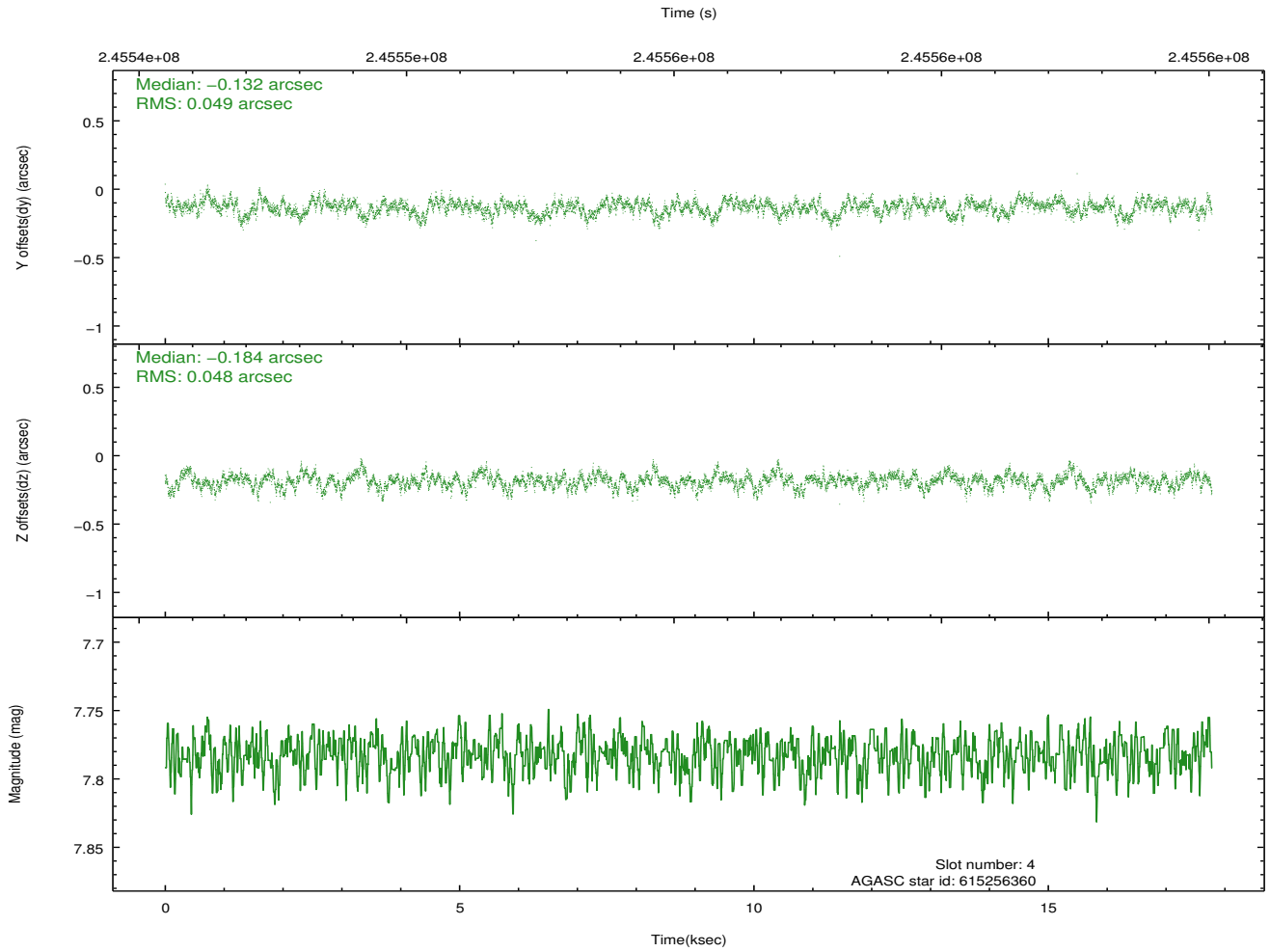
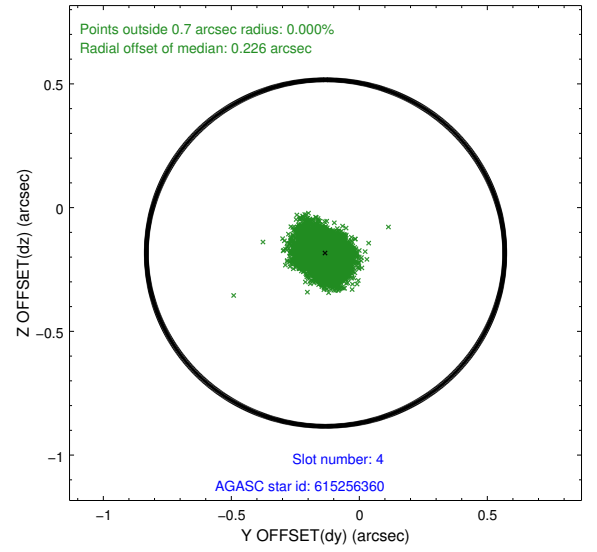
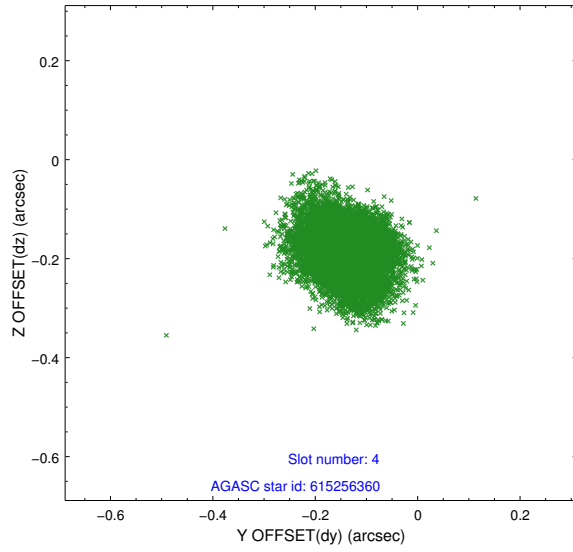
slot	status	id	mag	n_pts	med_dy	med_dz	dr1	dr2	ra	dec	mean_y	mean_z
0	FID	ACIS-S-2	7.10	4337	-0.071	-0.054	0.009	0.017	0.000000	0.000000	-759.77	-1731.99
1	FID	ACIS-S-4	7.21	4337	0.073	0.030	0.009	0.015	0.000000	0.000000	2153.52	176.37
2	FID	ACIS-S-6	7.35	4337	-0.030	0.032	0.010	0.015	0.000000	0.000000	402.52	814.01
3	GUIDE	615254552	9.22	8659	0.019	0.153	0.103	0.164	36.600600	-3.877551	2251.89	-904.78
4	GUIDE	615256360	7.78	8674	-0.132	-0.184	0.073	0.119	36.286608	-3.875886	1594.63	10.85
5	GUIDE	615256944	9.79	8655	0.223	0.017	0.120	0.202	35.497386	-4.510719	-1919.91	959.88
6	GUIDE	615260160	9.71	8664	0.038	0.056	0.142	0.223	35.737387	-3.921265	302.11	1510.91
7	GUIDE	615260392	7.62	8672	-0.136	-0.038	0.059	0.100	35.914136	-3.376682	2261.83	2150.53

2.4 Star Slots

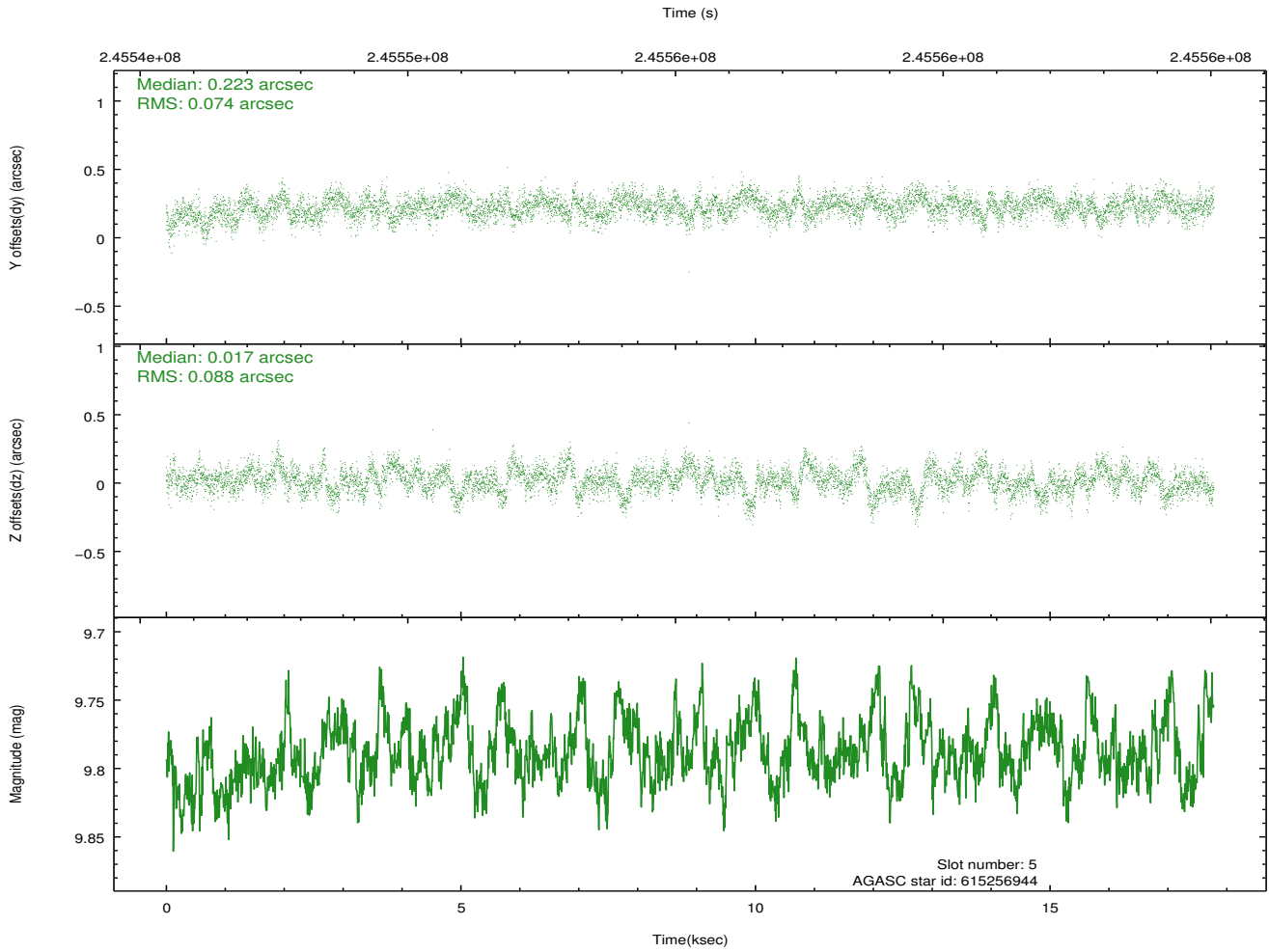
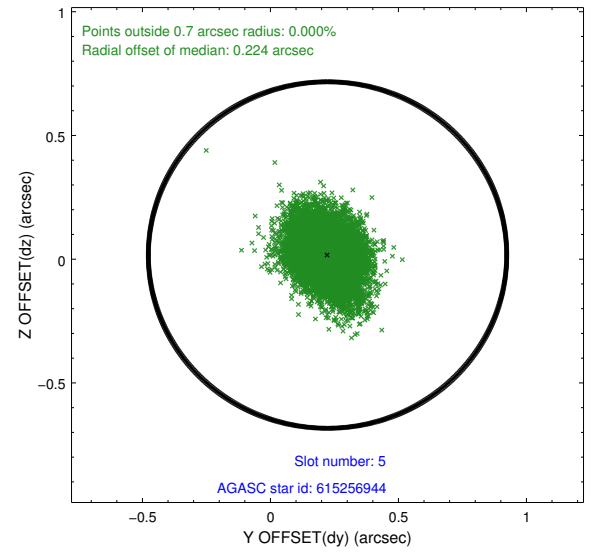
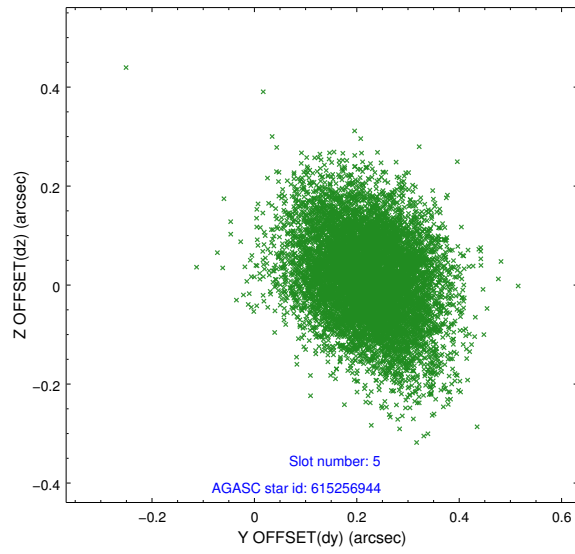
2.4.1 Slot 3



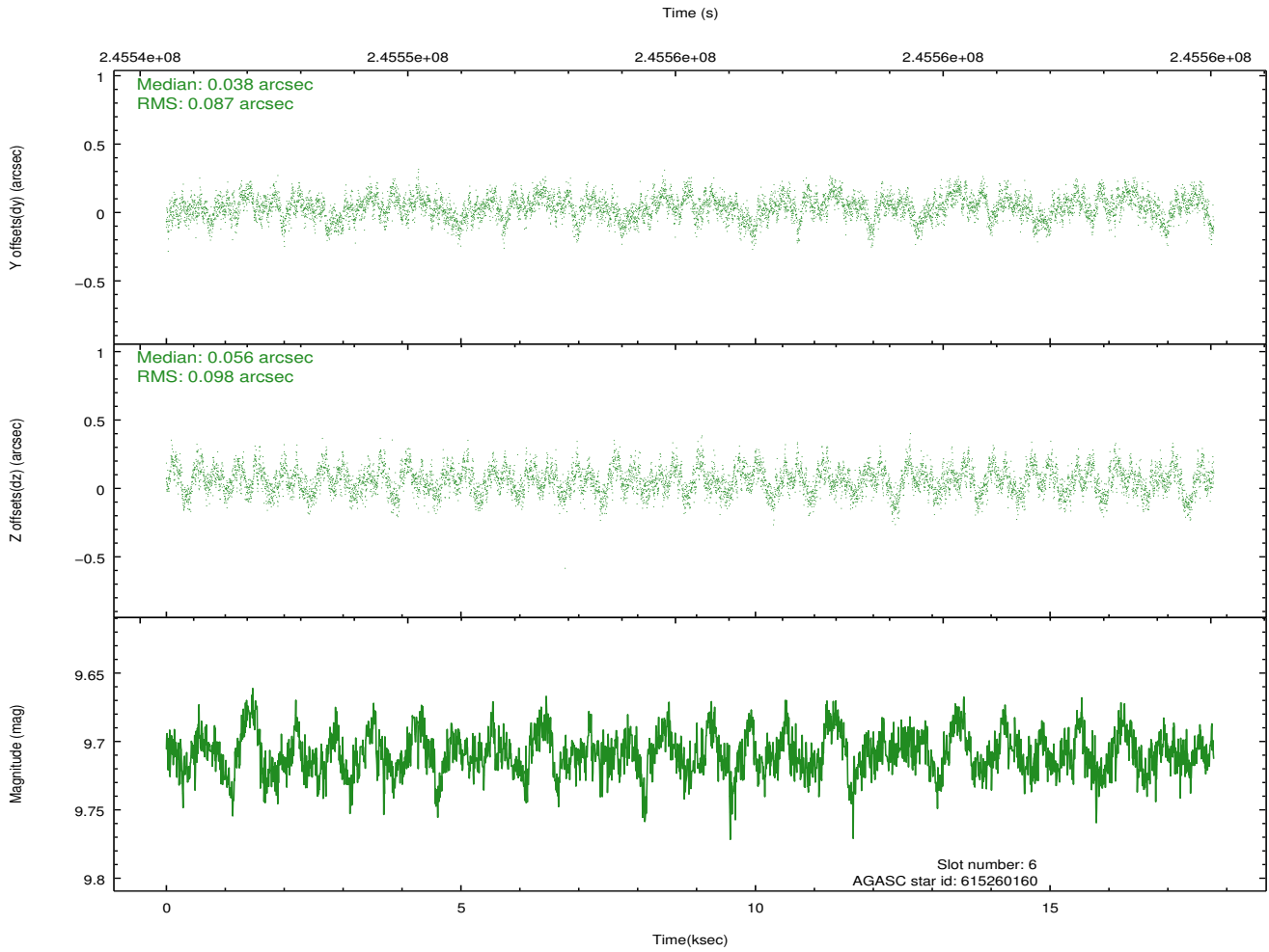
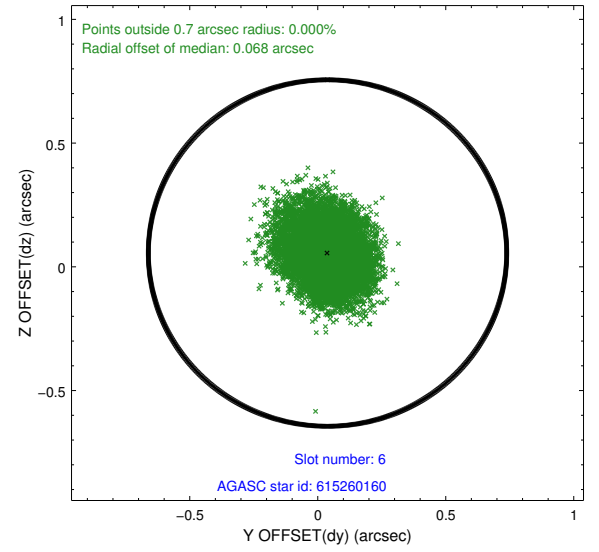
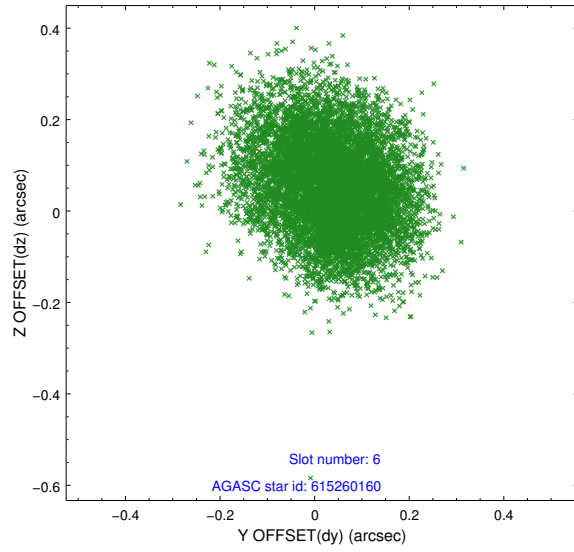
2.4.2 Slot 4



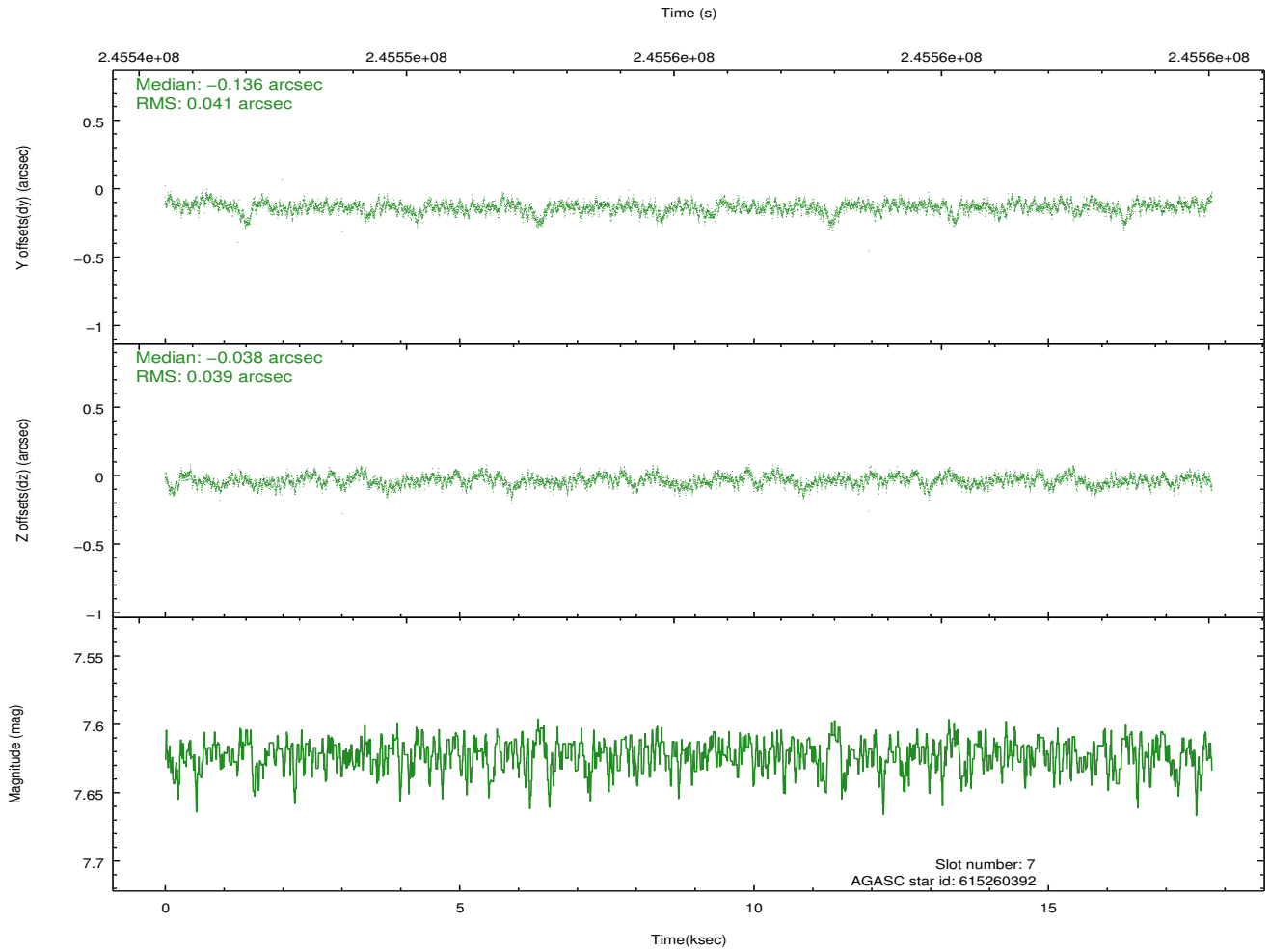
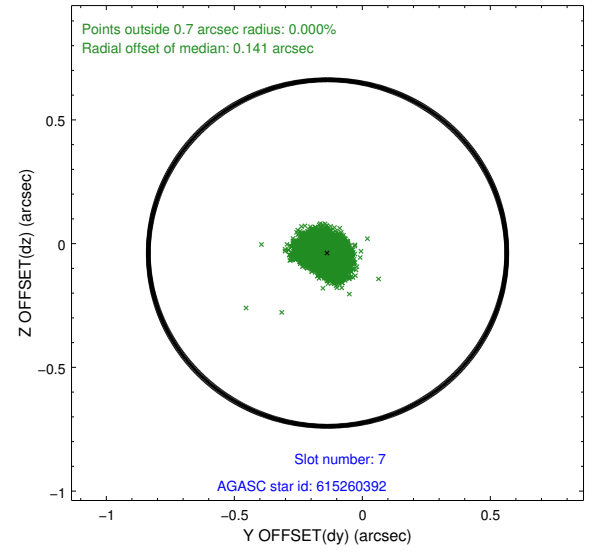
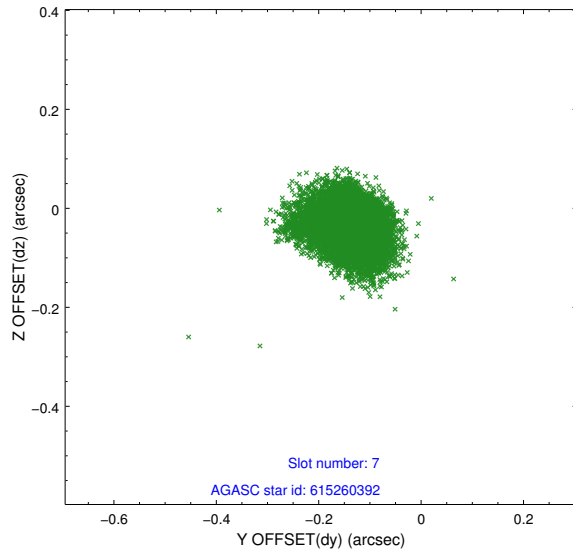
2.4.3 Slot 5



2.4.4 Slot 6

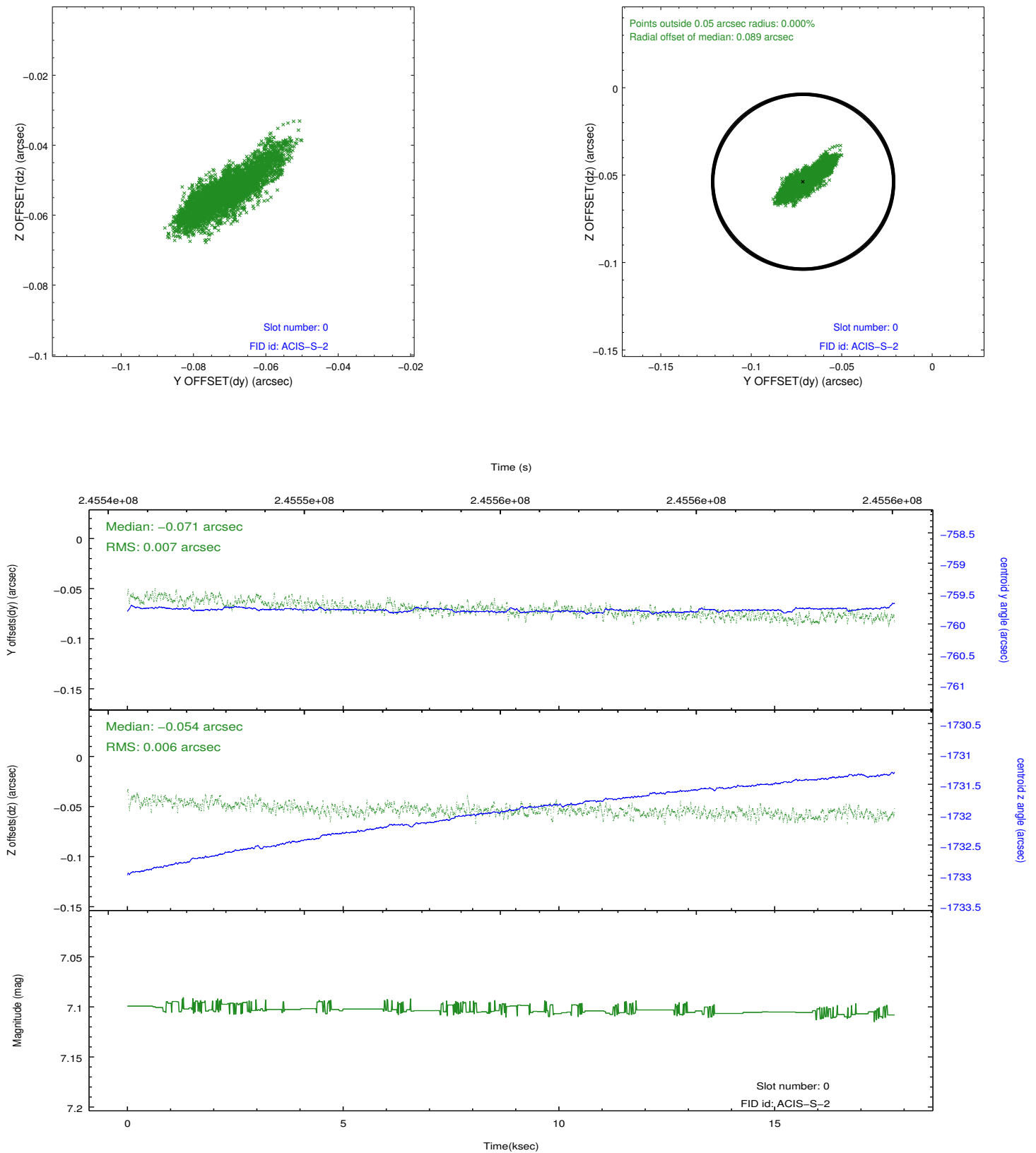


2.4.5 Slot 7

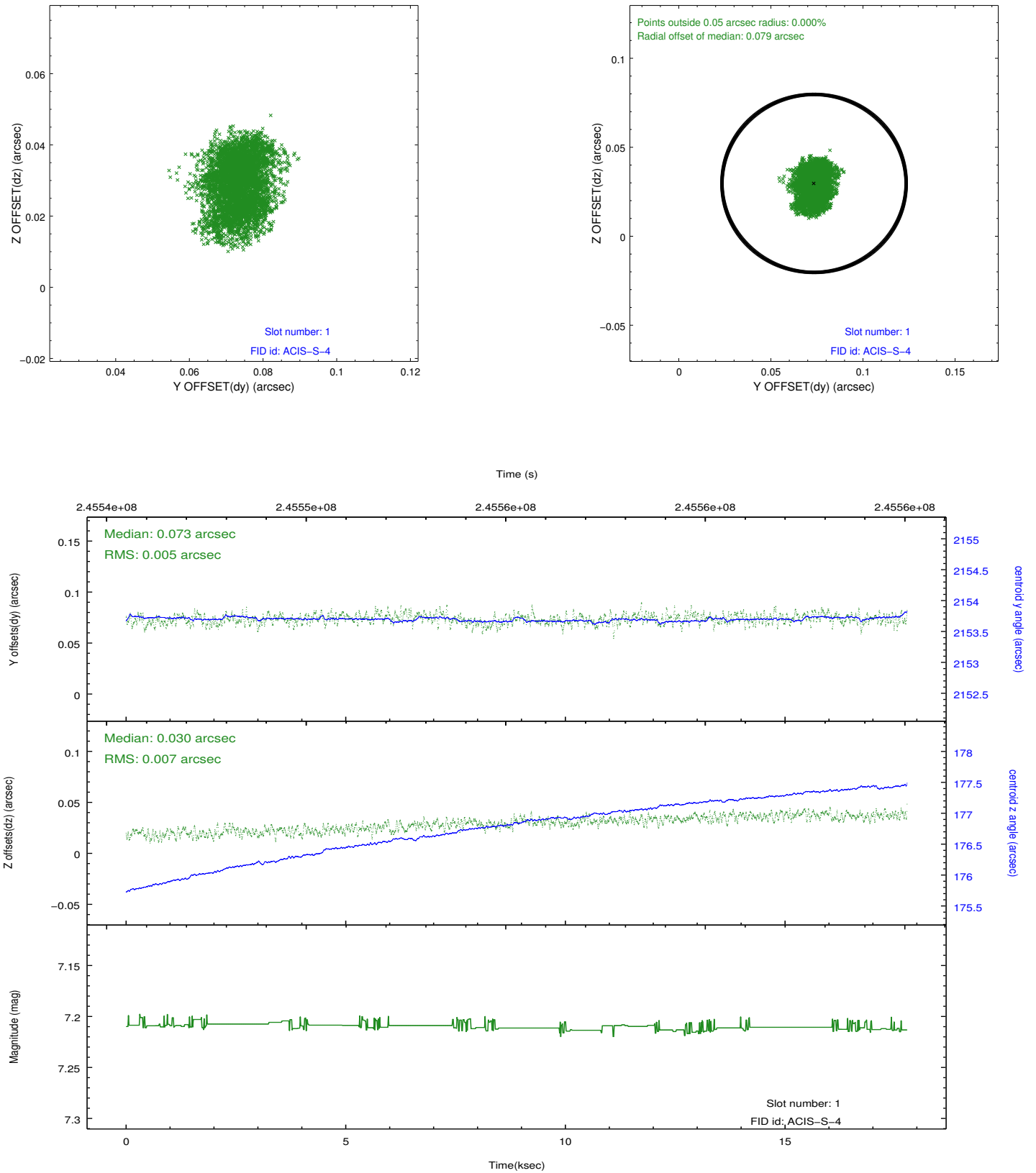


2.5 FID Slots

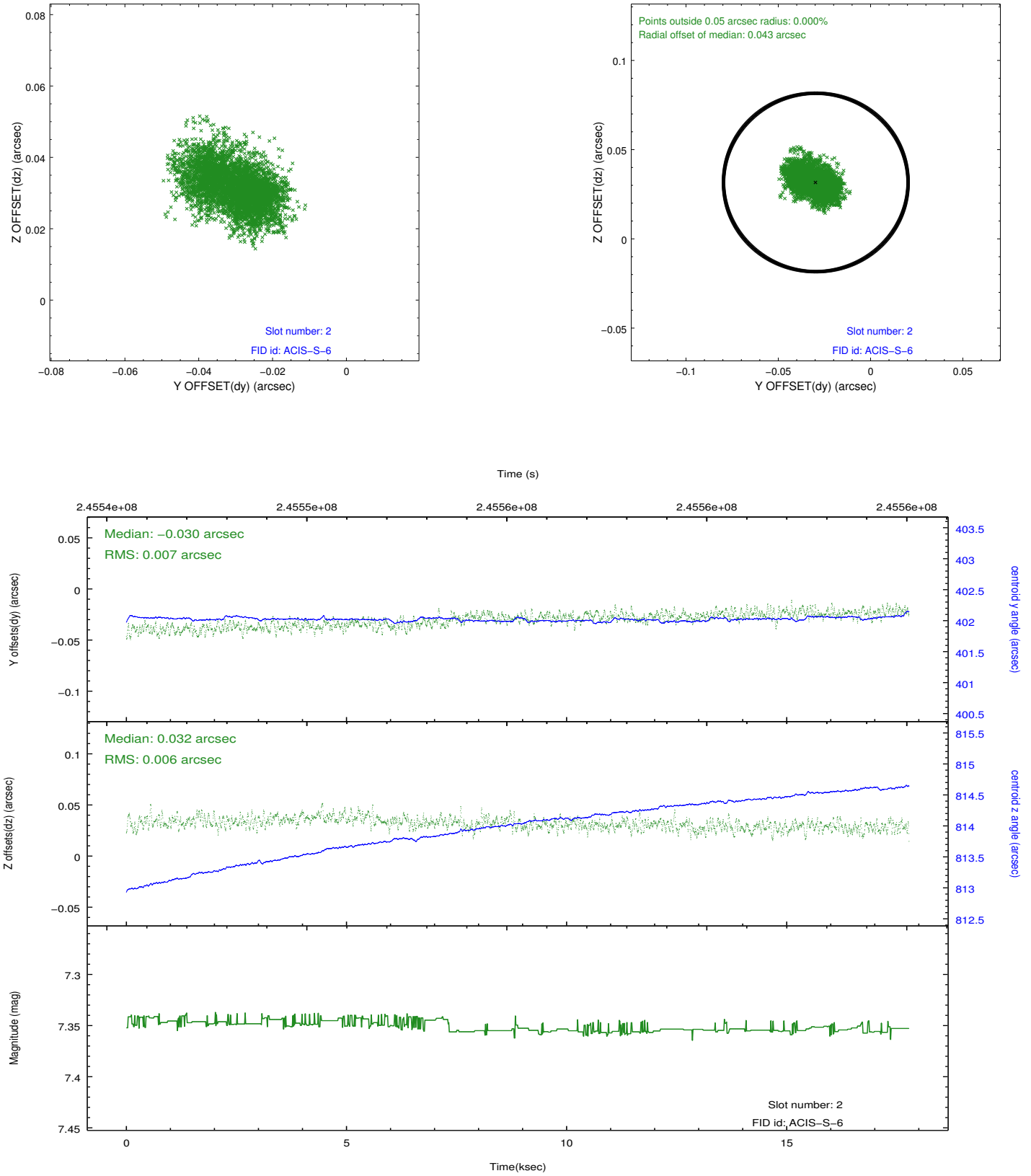
2.5.1 Slot 0



2.5.2 Slot 1



2.5.3 Slot 2



A Summary

A.1 Status

V&V Scientist	Jen Lauer
V&V Date (YYYY-MM-DD)	2013.03.08
V&V Edition	1
V&V Disposition and Status	OK
V&V Charge Time	17.77229

A.2 Comments

As a consequence of the DEA-A shutdown anomaly on Sep 15th (DOY258), the reported value of the ACIS FP temperature was ~1.3 degrees warmer than the actual temperature. The value for FP temperature reported in the headers of the Level 2 event file and the Mission Timeline files are incorrect by this amount for this processing. However, the temperature is corrected in the processing in order to obtain the correct temperature for the CTI correction. So the calibrated data are correct. If using the FP temp values in the headers of data files (some CIAO tools require this information), investigators should subtract 1.3 degrees from the reported temperature to determine the true temperature.

=====

Joint Proposal: XMM