

V&V Reference Report

L2 ASCDS Version : 7.6.7.1

Observation 6394 - L2 Version 002
Chandra X-Ray Center

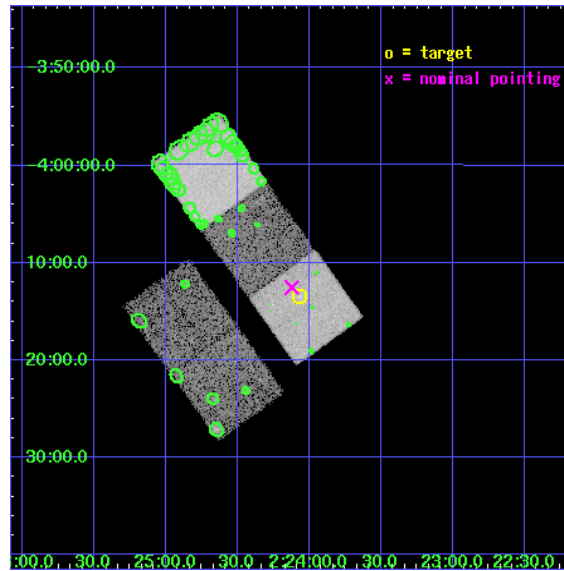
L2 Processing Date : Mar 31 2006

Contents

1	Front	2
2	OBI	3
2.1	OBI	3
2.1.1	Images	3
2.1.2	Bias	3
2.1.3	Parameters	4
2.1.4	Events	4
2.2	Compared Parameters	5
2.3	Aspect	6
2.4	Star Slots	9
2.4.1	Slot 3	9
2.4.2	Slot 4	10
2.4.3	Slot 5	11
2.4.4	Slot 6	12
2.4.5	Slot 7	13
2.5	FID Slots	14
2.5.1	Slot 0	14
2.5.2	Slot 1	15
2.5.3	Slot 2	16
3	Point Sources	17
A	Summary	18
A.1	Status	18
A.2	Comments	18

1 Front

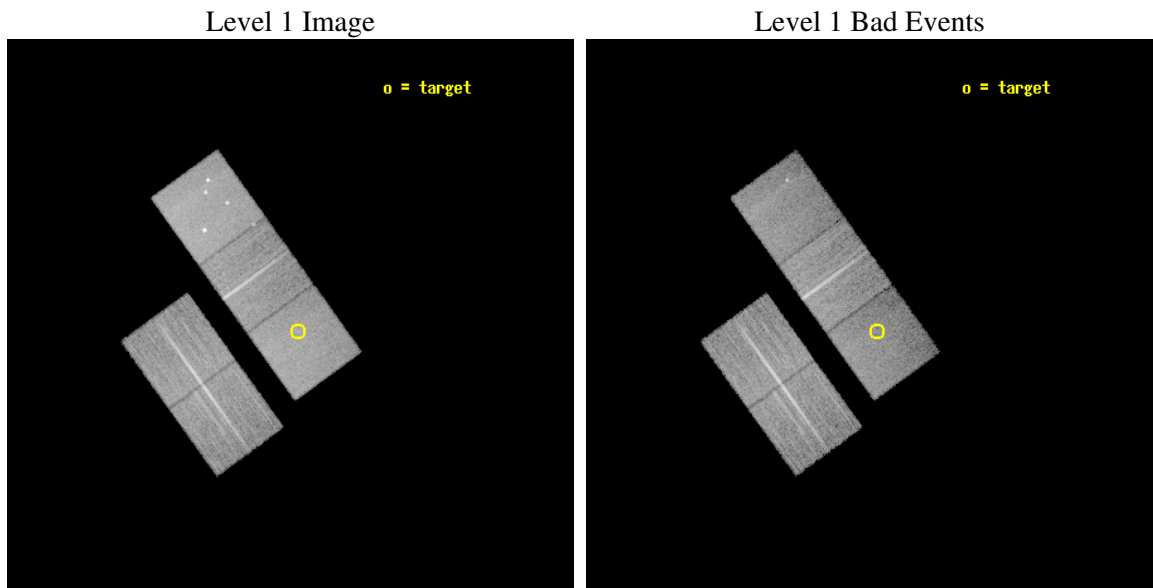
seq_num	800500
obs_id	6394
title	A detailed study of a $z>1$ galaxy cluster
observer	Dr Laurence Jones
object	XLSSJ022404.0-041328
dtcycle	0
cycle	P
ra_targ	36.017083
dec_targ	-4.224694
ra_nom	36.030636403704
dec_nom	-4.2089322020484
roll_nom	54.15758615362
revision	2
ontime	17772.299965829
livetime	17540.091782998
ontime2	17772.299965829
ontime3	17772.299965829
ontime5	17772.299965829
ontime6	17769.158995569
ontime7	17772.299965829
l2events	146077



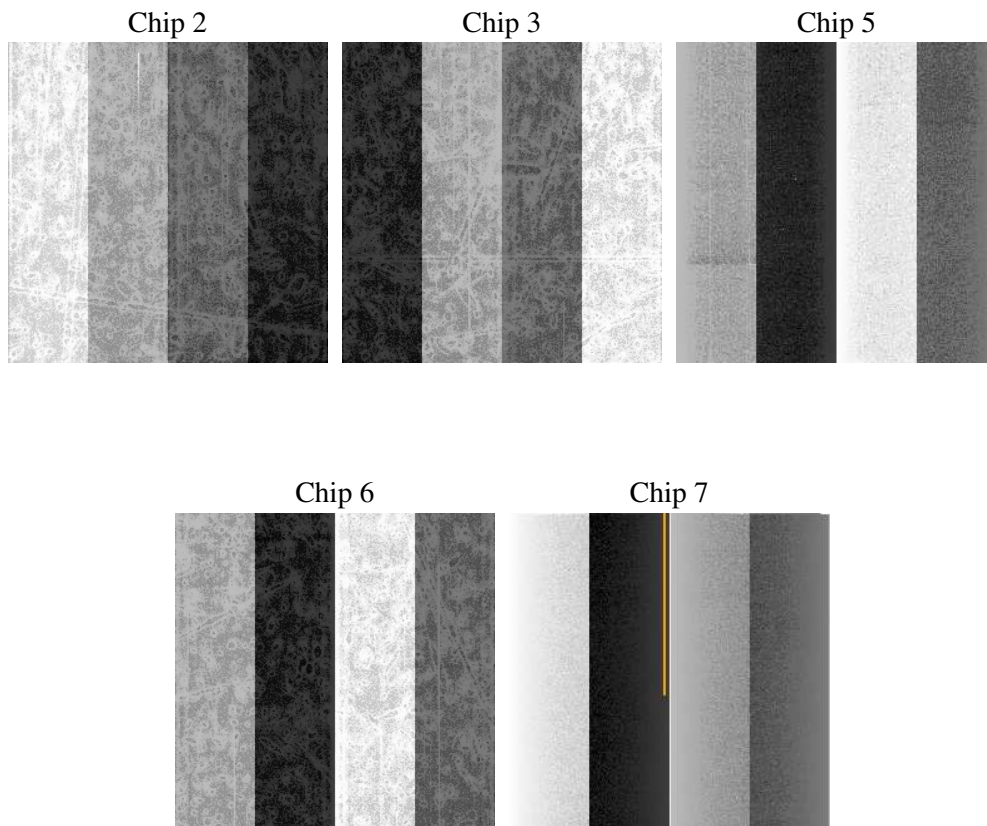
2 OBI

2.1 OBI

2.1.1 Images



2.1.2 Bias



2.1.3 Parameters

obi_num	0
ascdsver	7.6.7.1
caldbver	3.2.1
date	2006-04-01T01:42:46
revision	2

sched_exp_time	17600.000000
ontime	18676.448640108
ontime2	18676.448640108
ontime3	18676.44862023
ontime5	18676.448640108
ontime6	18673.30764997
ontime7	18676.448640108
l1events	647283

2.1.4 Events

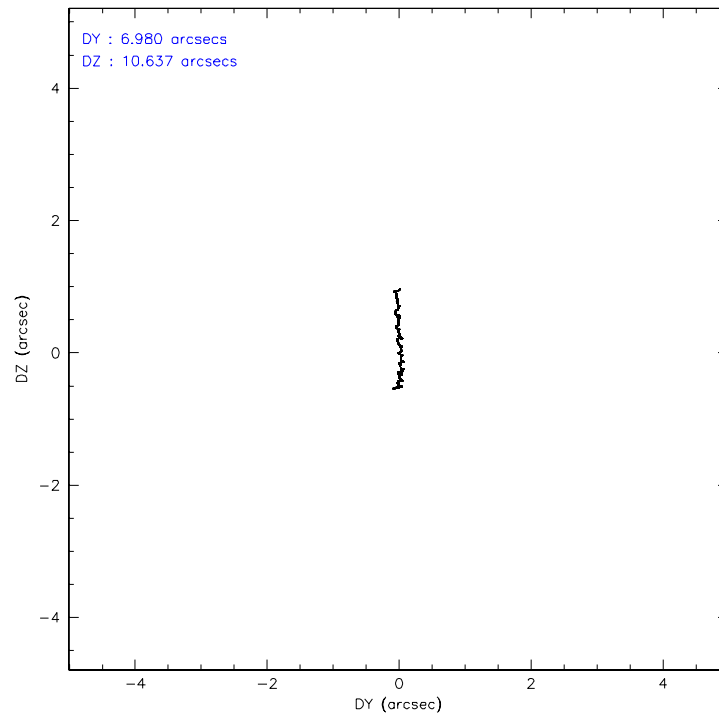
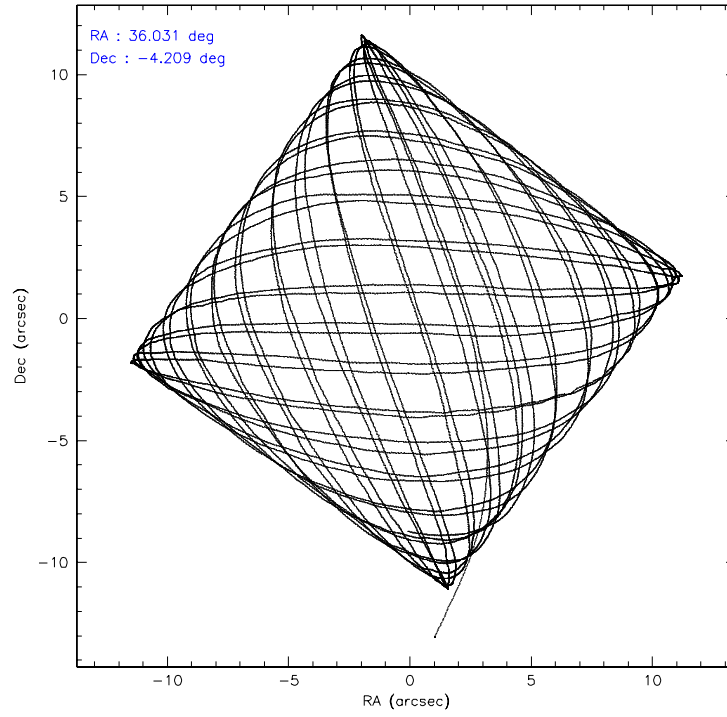
	ccd 2	ccd 3	ccd 5	ccd 6	ccd 7
level 1 events	121888	113945	163248	117689	130513
rejected events	111197	103350	88659	106009	79066
rejected %	91%	90%	54%	90%	60%

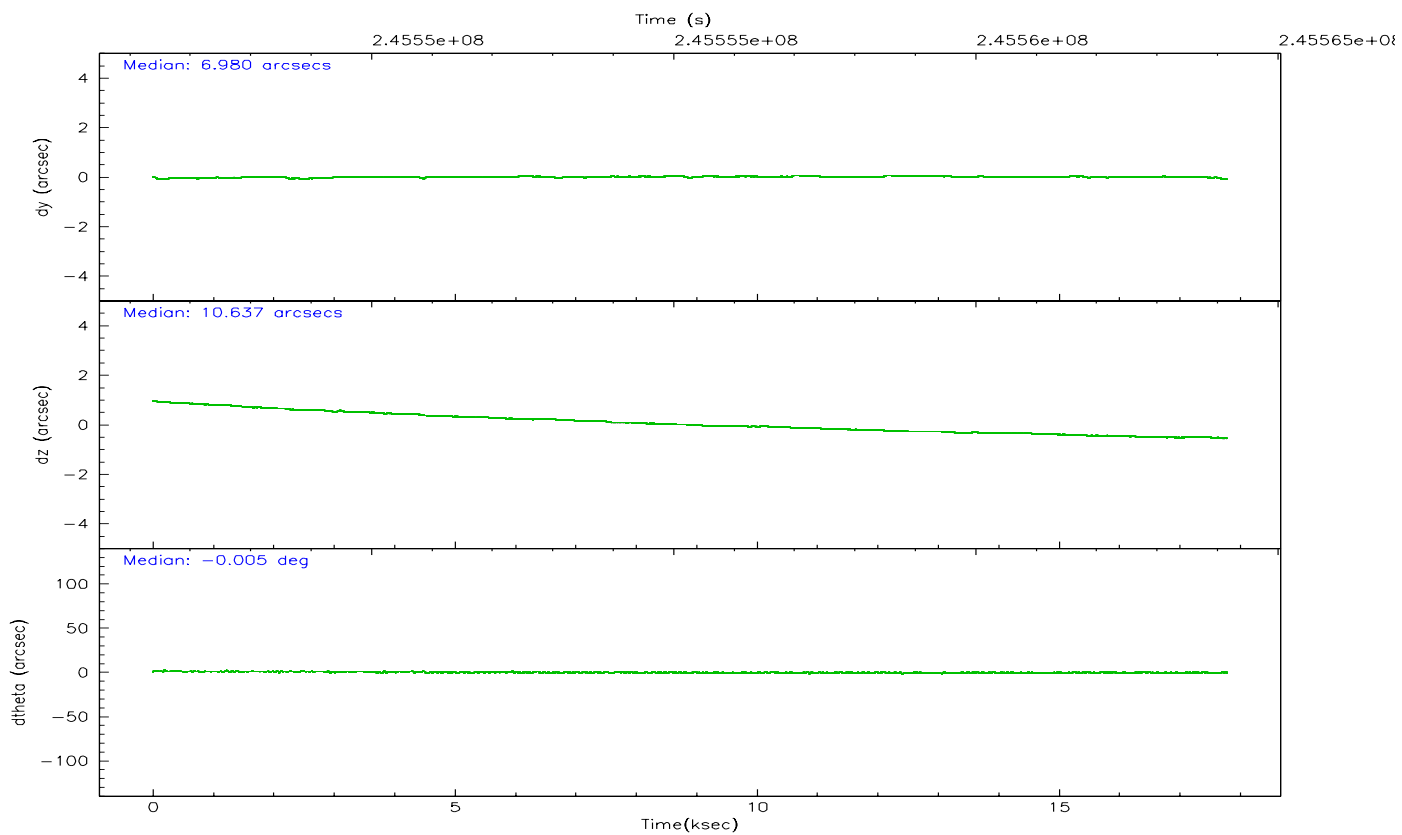
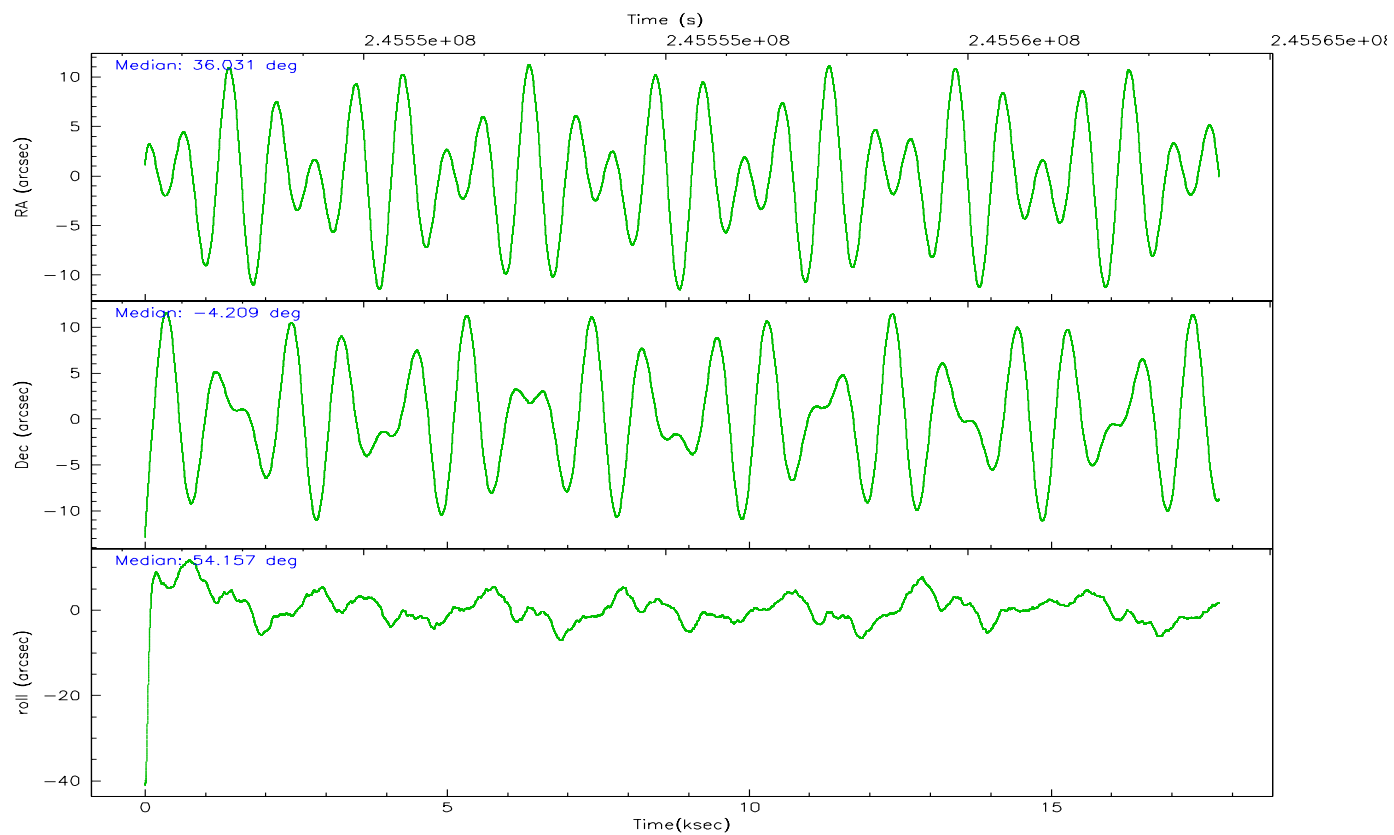
	ccd 2	ccd 3	ccd 5	ccd 6	ccd 7
grade 0 events	4011	3932	7262	4250	3092
	3%	3%	4%	3%	2%
grade 1 events	51	56	89	51	68
	0%	0%	0%	0%	0%
grade 2 events	2690	2408	24170	2686	13397
	2%	2%	14%	2%	10%
grade 3 events	1248	1291	2017	1383	3068
	1%	1%	1%	1%	2%
grade 4 events	1251	1252	1878	1362	3037
	1%	1%	1%	1%	2%
grade 5 events	3800	4629	8789	4738	9649
	3%	4%	5%	4%	7%
grade 6 events	2017	2207	43308	2563	31556
	1%	1%	26%	2%	24%
grade 7 events	106820	98170	75735	100656	66646
	87%	86%	46%	85%	51%

2.2 Compared Parameters

Parameter	Planned	Actual	Parameter	Planned	Actual
Instrument	ACIS	ACIS	Obspar format version number	6	6
Detector	ACIS-23567	ACIS-23567	Obspar file type	PREDICTED	ACTUAL
Grating	NONE	NONE	Obspar update status	NONE	UPDATED
Data mode	VFAINT	VFAINT	On-chip summing requested	N	N
Observation mode	POINTING	POINTING	Subarray requested	NONE	NONE
Pointing RA	36.028223	36.03063640370375	Alternating exposures requested	N	N
Pointing Dec	-4.236056	-4.208932202048357	Primary exposure time	0.000000	3.1
Pointing Roll	54.000825	54.15758615361994			
SIM focus pos (mm)	-0.684267	-0.6828225247311905			
SIM defocus (mm)	0	0.001444936568705701			
SIM translation stage pos (mm)	-190.132523	-190.1425803651734			
SIM translation stage offset (mm)	0	0.01005778216563158			
Observation start time	245546563.184000	245545118.25904			
Observation start date	2005-10-12T23:21:39	2005-10-12T22:58:38			
Observation end time	245564163.184000	245565369.69747			
Observation end date	2005-10-13T04:14:59	2005-10-13T04:36:09			
Read mode	TIMED	TIMED			

2.3 Aspect



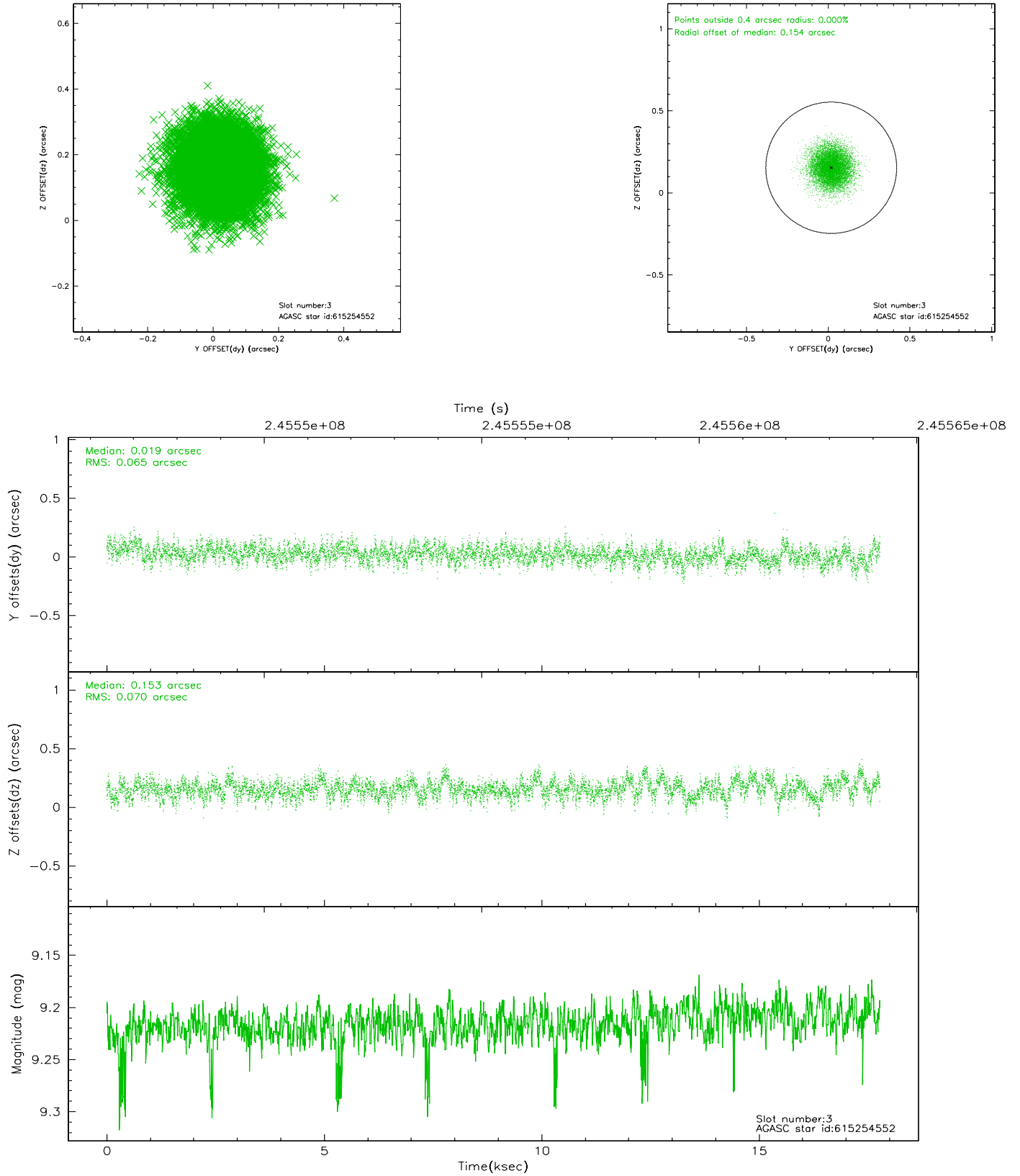


Slot Statistics

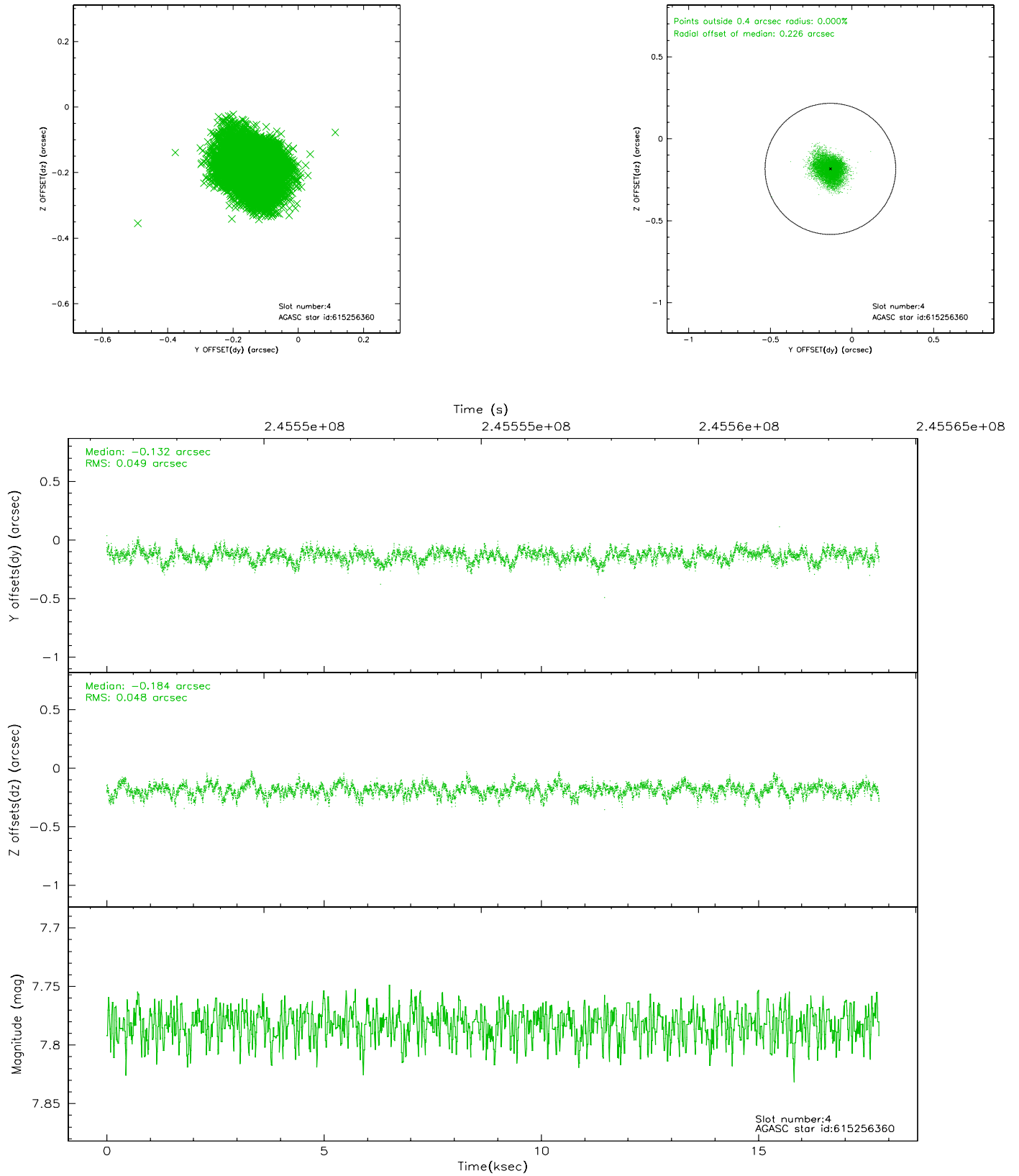
slot	status	id	mag	n_pts	med_dy	med_dz	dr1	dr2	ra	dec	mean_y	mean_z
0	FID	ACIS-S-2	7.10	4337	-0.047	-0.027	0.012	0.021	0.000000	0.000000	-759.76	-1731.95
1	FID	ACIS-S-4	7.21	4337	0.045	0.022	0.010	0.016	0.000000	0.000000	2153.48	176.37
2	FID	ACIS-S-6	7.35	4337	-0.026	0.012	0.009	0.014	0.000000	0.000000	402.51	814.00
3	GUIDE	615254552	9.22	8659	0.019	0.153	0.103	0.164	36.600600	-3.877551	2251.89	-904.78
4	GUIDE	615256360	7.78	8674	-0.132	-0.184	0.073	0.119	36.286608	-3.875886	1594.63	10.85
5	GUIDE	615256944	9.79	8655	0.223	0.017	0.120	0.202	35.497386	-4.510719	-1919.91	959.88
6	GUIDE	615260160	9.71	8664	0.038	0.056	0.142	0.223	35.737387	-3.921265	302.11	1510.91
7	GUIDE	615260392	7.62	8672	-0.136	-0.038	0.059	0.100	35.914136	-3.376682	2261.83	2150.53

2.4 Star Slots

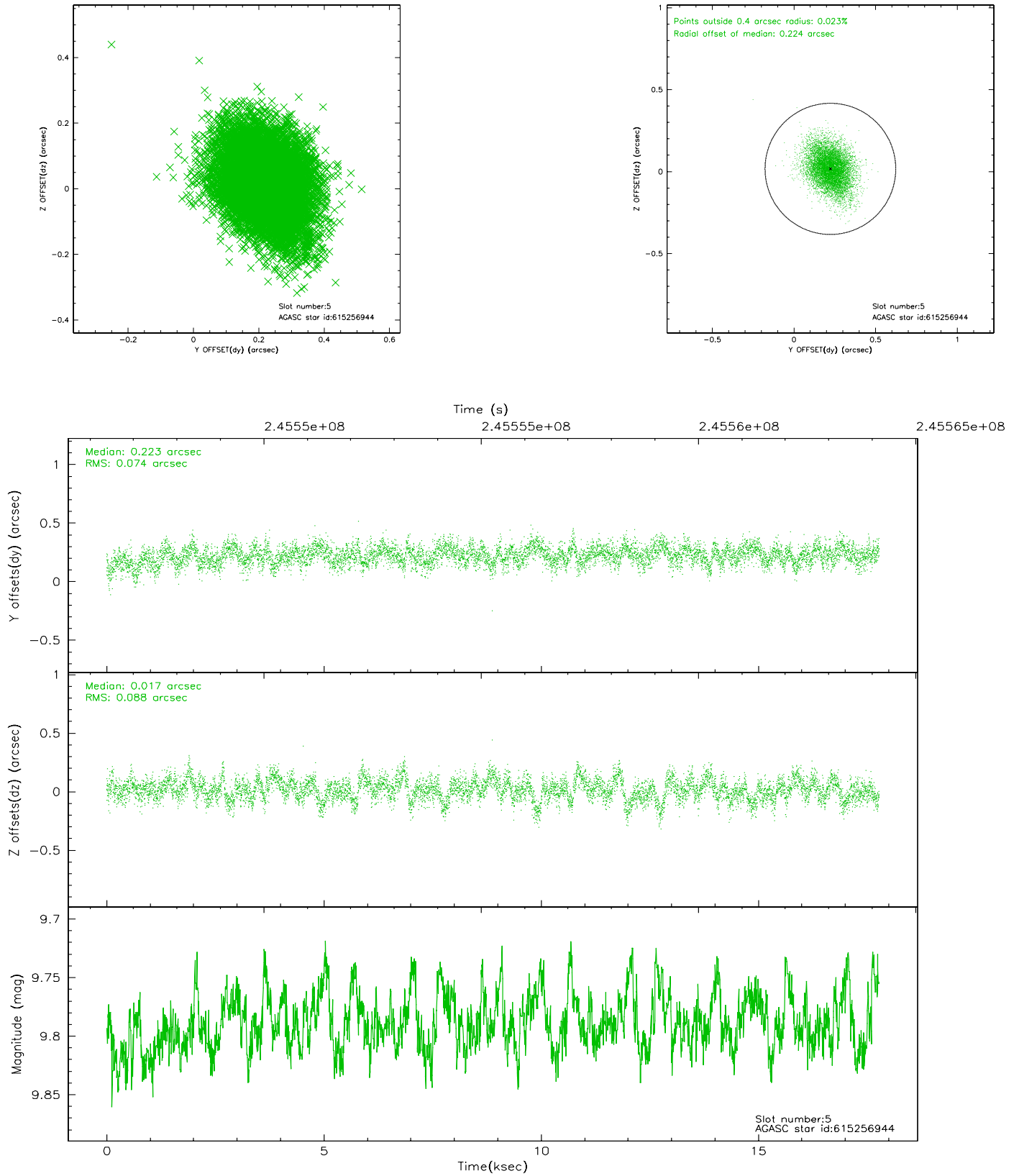
2.4.1 Slot 3



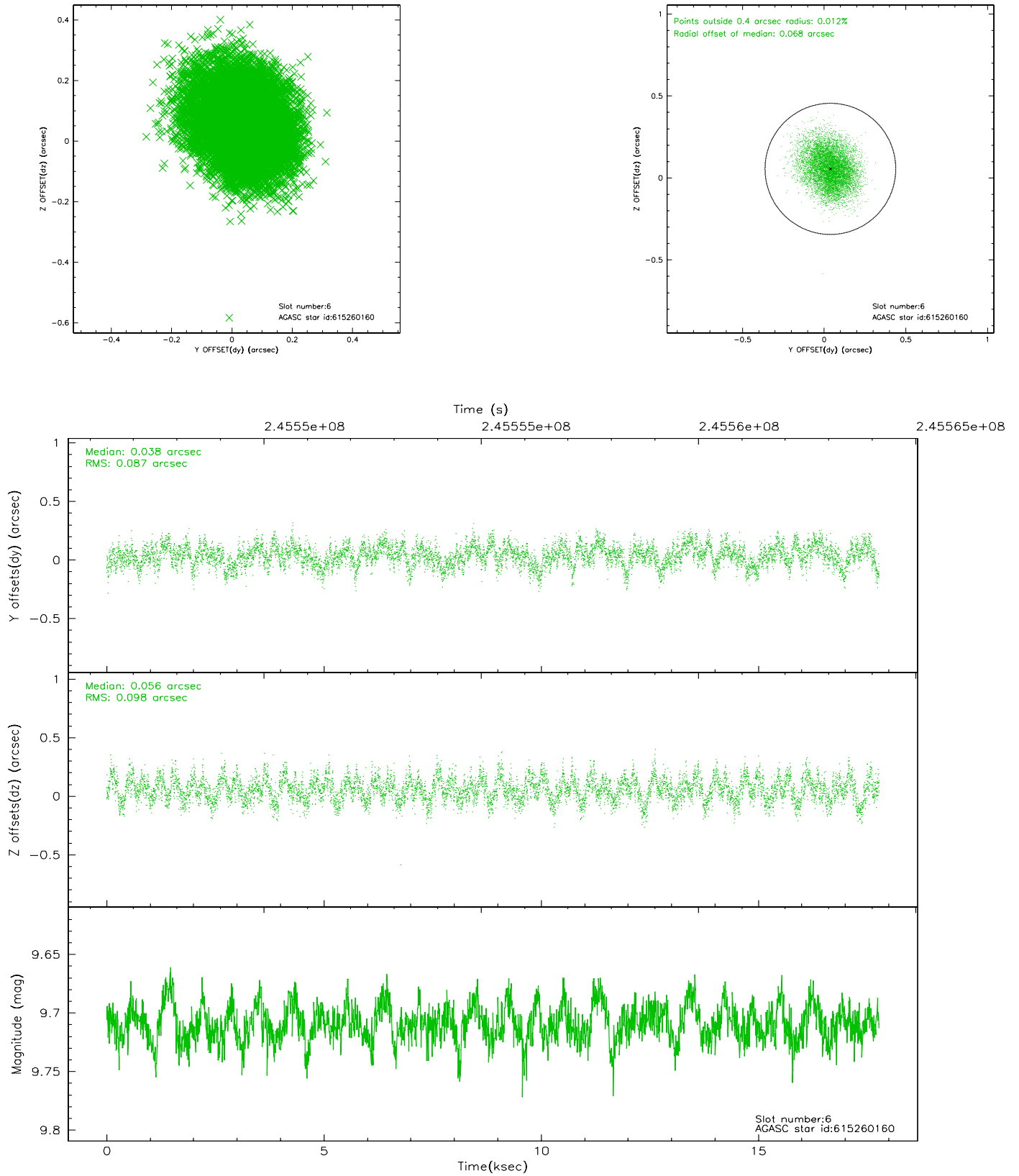
2.4.2 Slot 4



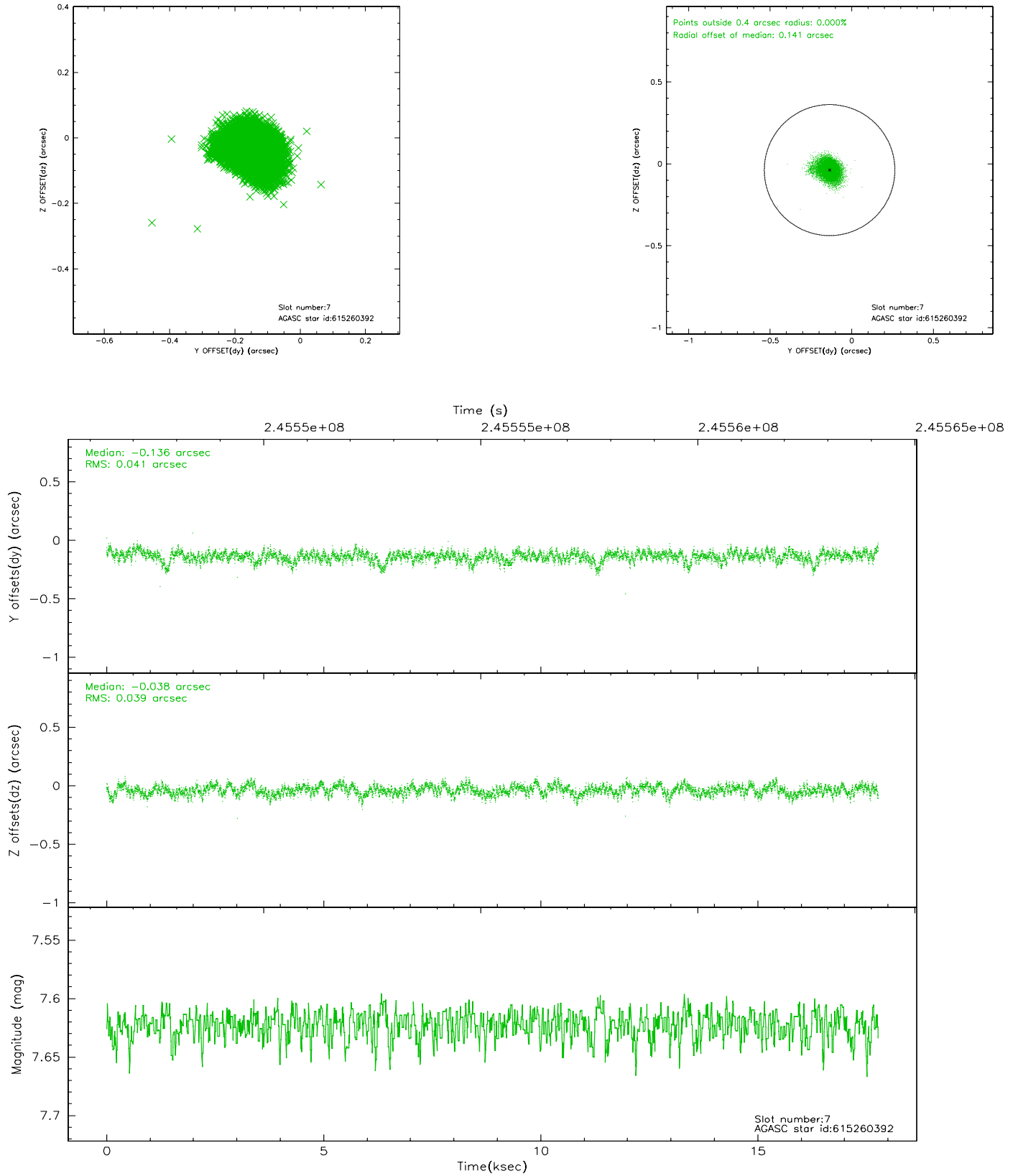
2.4.3 Slot 5



2.4.4 Slot 6

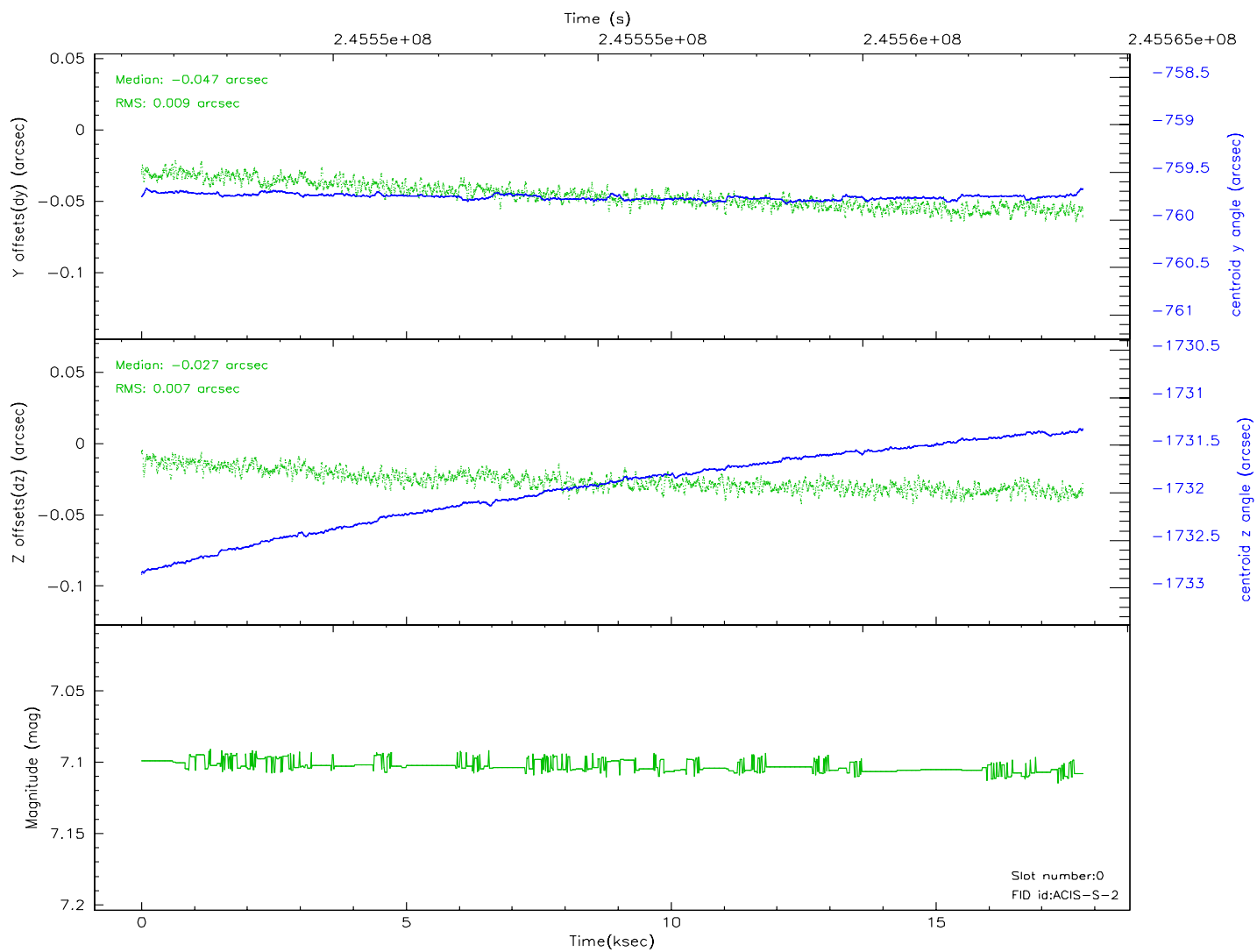
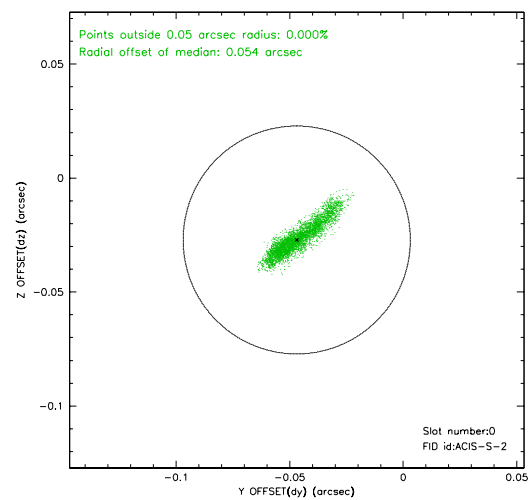
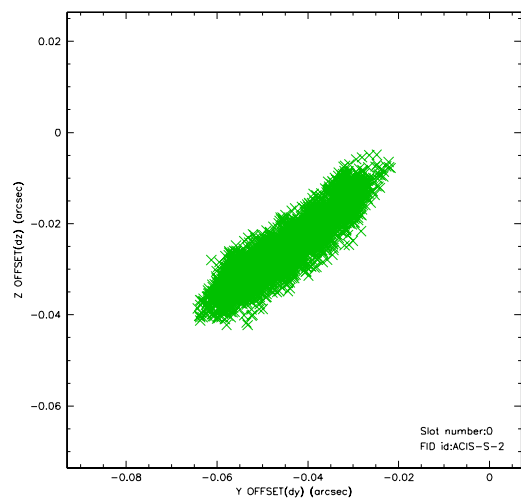


2.4.5 Slot 7

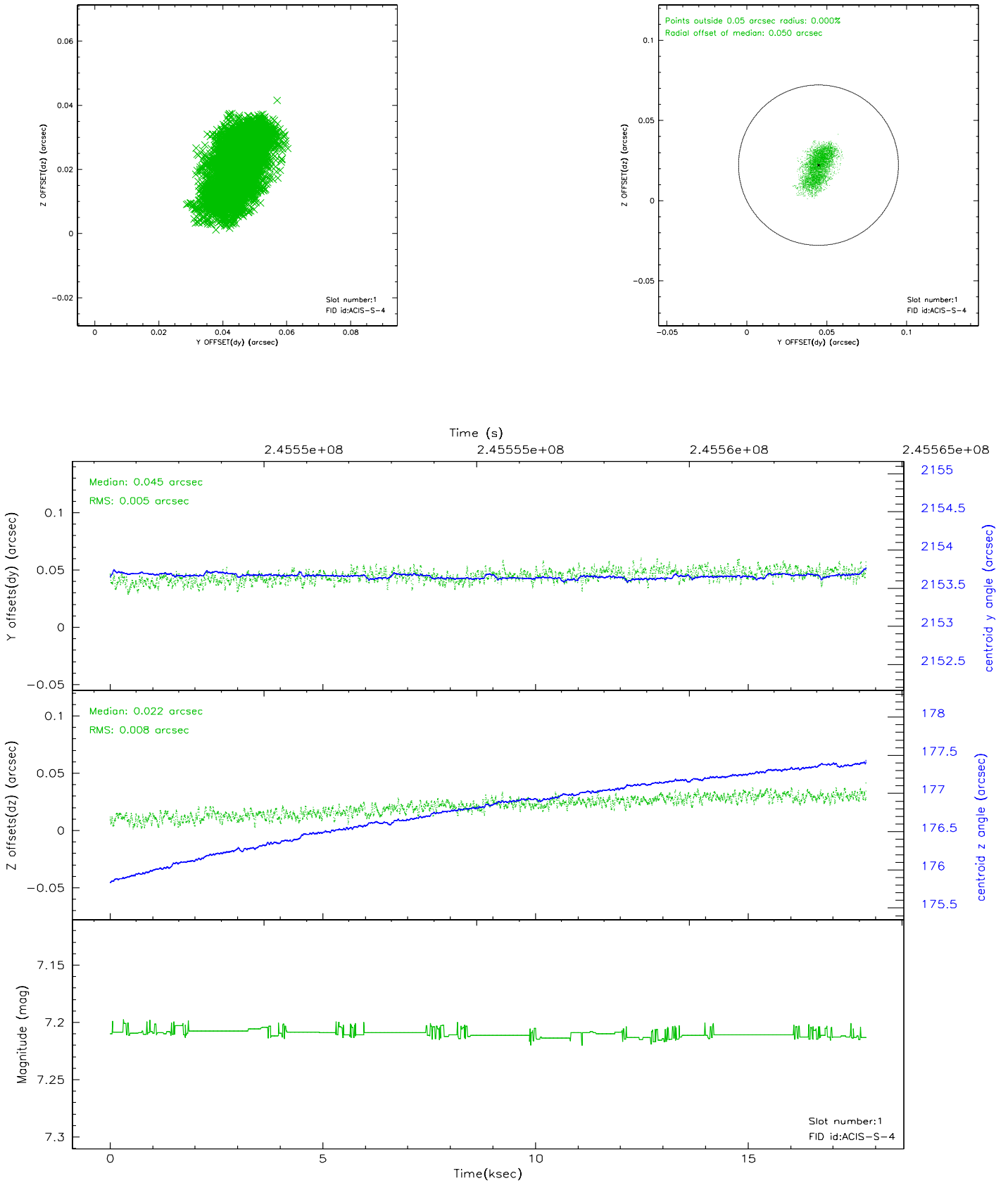


2.5 FID Slots

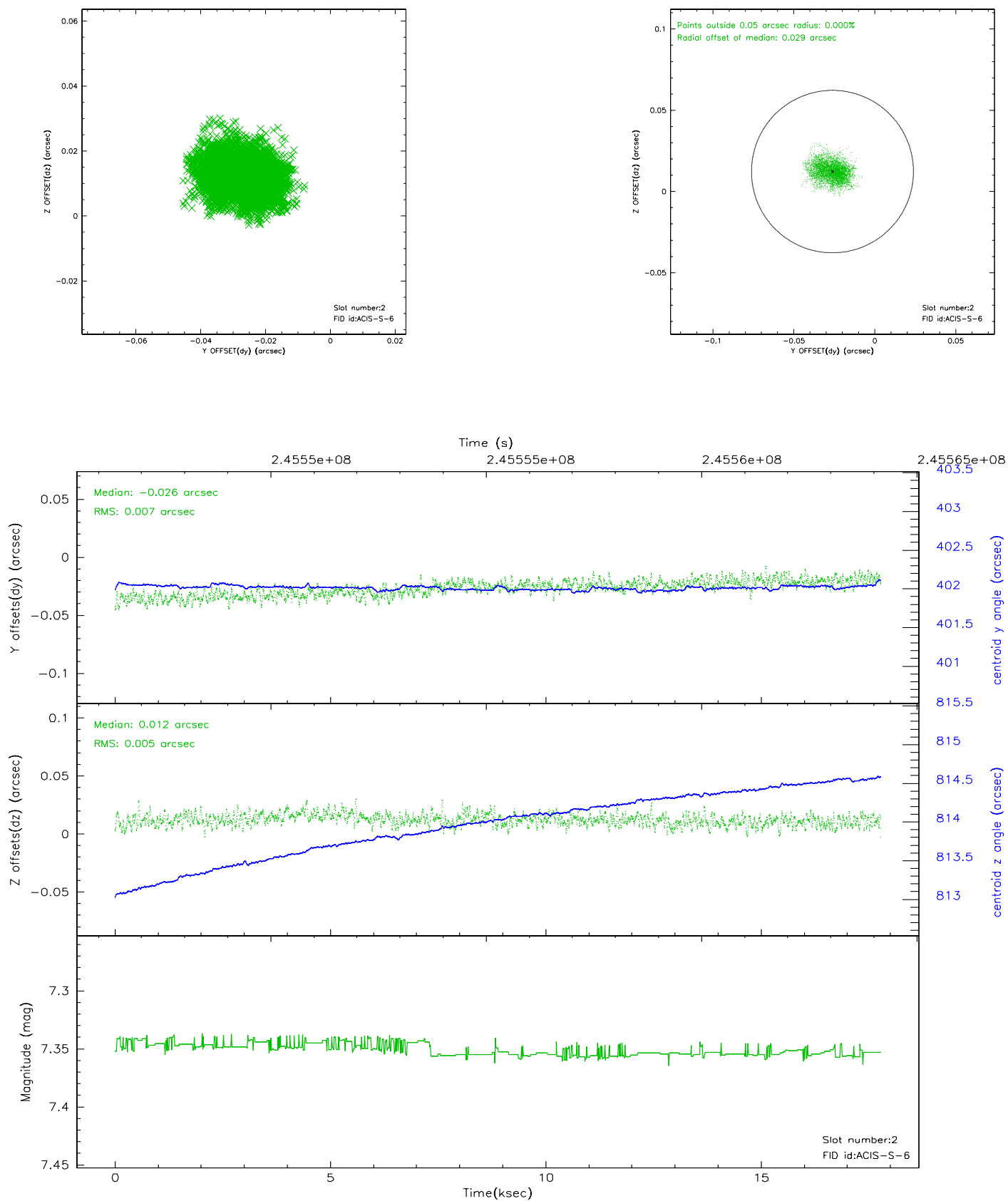
2.5.1 Slot 0



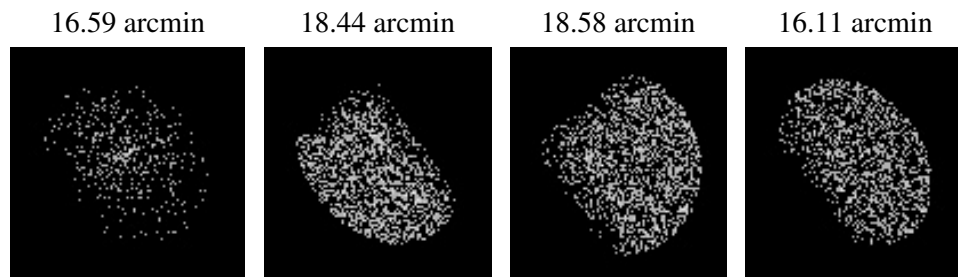
2.5.2 Slot 1



2.5.3 Slot 2



3 Point Sources



A Summary

A.1 Status

V&V Scientist	Beth Sundheim
V&V Date (YYYY-MM-DD)	2006.04.03
V&V Edition	1
V&V Disposition and Status	OK
V&V Charge Time	17.77229

A.2 Comments