

# V&V Reference Report

## L2 ASCDS Version : 7.6.7

Observation 5838 - L2 Version 002  
Chandra X-Ray Center

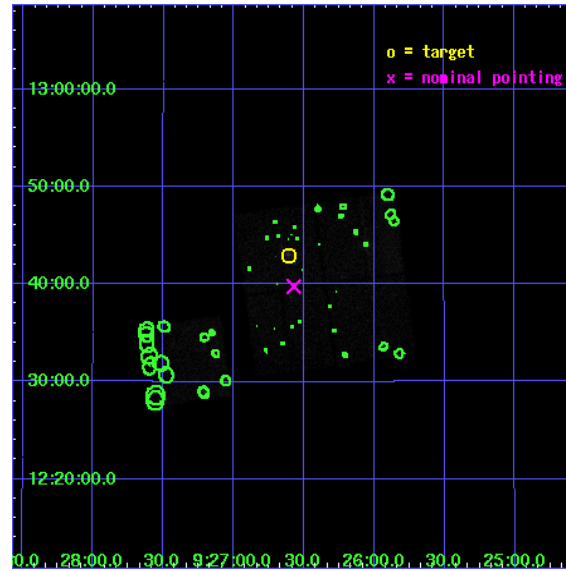
L2 Processing Date: Feb 23 2006

## Contents

<b>1</b>	<b>Front</b>	<b>2</b>
<b>2</b>	<b>OBI</b>	<b>3</b>
2.1	OBI . . . . .	3
2.1.1	Images . . . . .	3
2.1.2	Bias . . . . .	3
2.1.3	Parameters . . . . .	4
2.1.4	Events . . . . .	4
2.2	Compared Parameters . . . . .	5
2.3	Aspect . . . . .	6
2.4	Star Slots . . . . .	9
2.4.1	Slot 3 . . . . .	9
2.4.2	Slot 4 . . . . .	10
2.4.3	Slot 5 . . . . .	11
2.4.4	Slot 6 . . . . .	12
2.4.5	Slot 7 . . . . .	13
2.5	FID Slots . . . . .	14
2.5.1	Slot 0 . . . . .	14
2.5.2	Slot 1 . . . . .	15
2.5.3	Slot 2 . . . . .	16
<b>3</b>	<b>Point Sources</b>	<b>17</b>
<b>A</b>	<b>Summary</b>	<b>18</b>
A.1	Status . . . . .	18
A.2	Comments . . . . .	18

# 1 Front

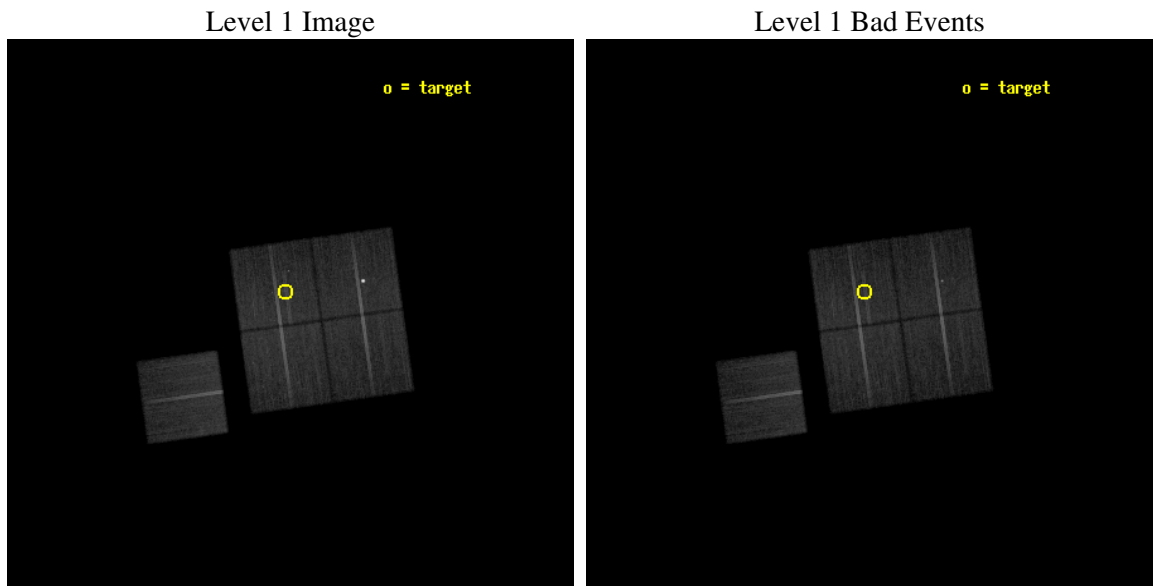
seq_num	800547
obs_id	5838
title	Supplement to Chandra observations of high-redshift clusters of galaxies from the 400 Square Degree ROSAT PSPC survey
observer	Dr. Steven Murray
object	cl0926+1242
dtcycle	0
cycle	P
ra_targ	141.6525
dec_targ	12.716389
ra_nom	141.64281778446
dec_nom	12.662917227116
roll_nom	262.07743099532
revision	2
ontime	31768.758938789
livetime	31353.676715434
ontime0	31762.476978213
ontime1	31768.758948714
ontime2	31762.476978213
ontime3	31768.758938789
ontime6	31771.899938911
l2events	108151



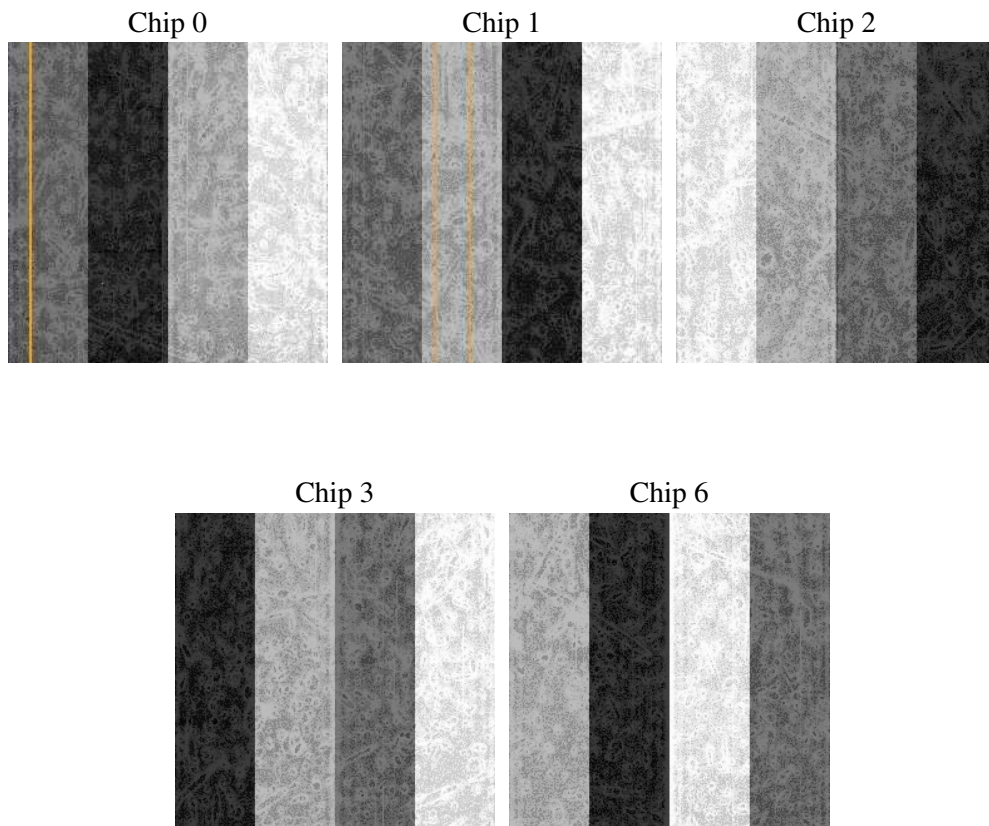
## 2 OBI

### 2.1 OBI

#### 2.1.1 Images



#### 2.1.2 Bias



### 2.1.3 Parameters

obi_num	1
ascdsver	7.6.7
caldbver	3.2.1
date	2006-02-24T01:35:54
revision	2

sched_exp_time	32000.000000
ontime	31774.462698191
ontime0	31768.180747598
ontime1	31774.462718099
ontime2	31768.180747598
ontime3	31774.462698191
ontime6	31777.603708297
l1events	970818

### 2.1.4 Events

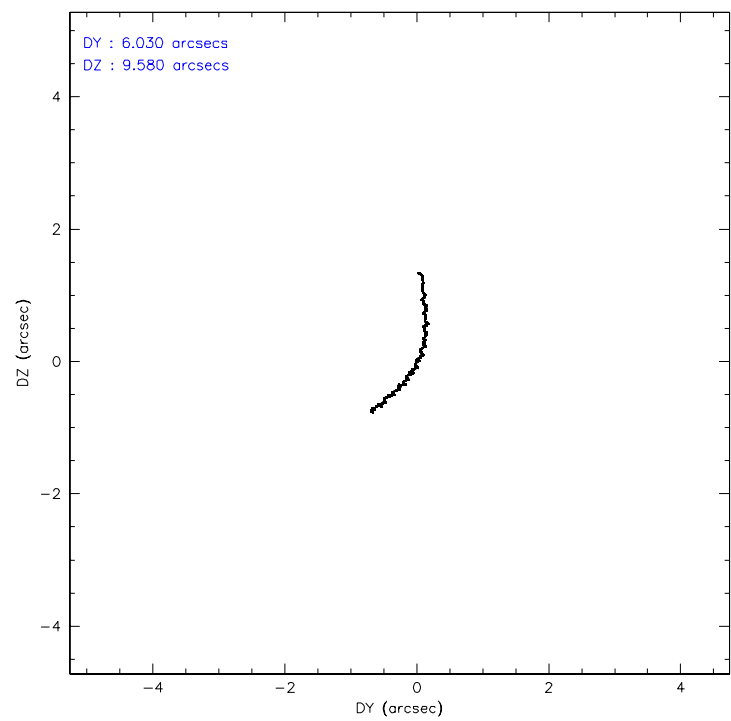
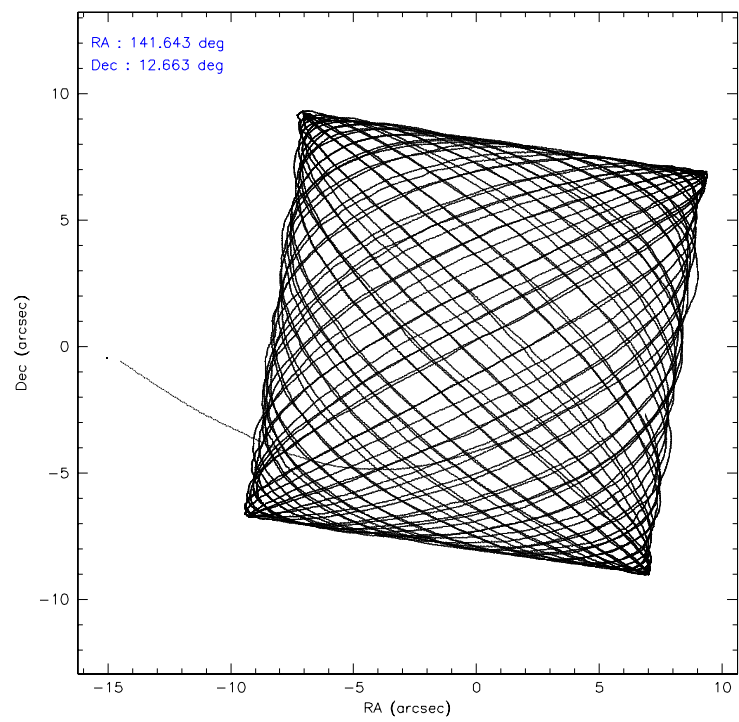
	ccd 0	ccd 1	ccd 2	ccd 3	ccd 6
level 1 events	175730	209240	197814	193850	194184
rejected events	156891	159957	179012	174057	174241
rejected %	89%	76%	90%	89%	89%

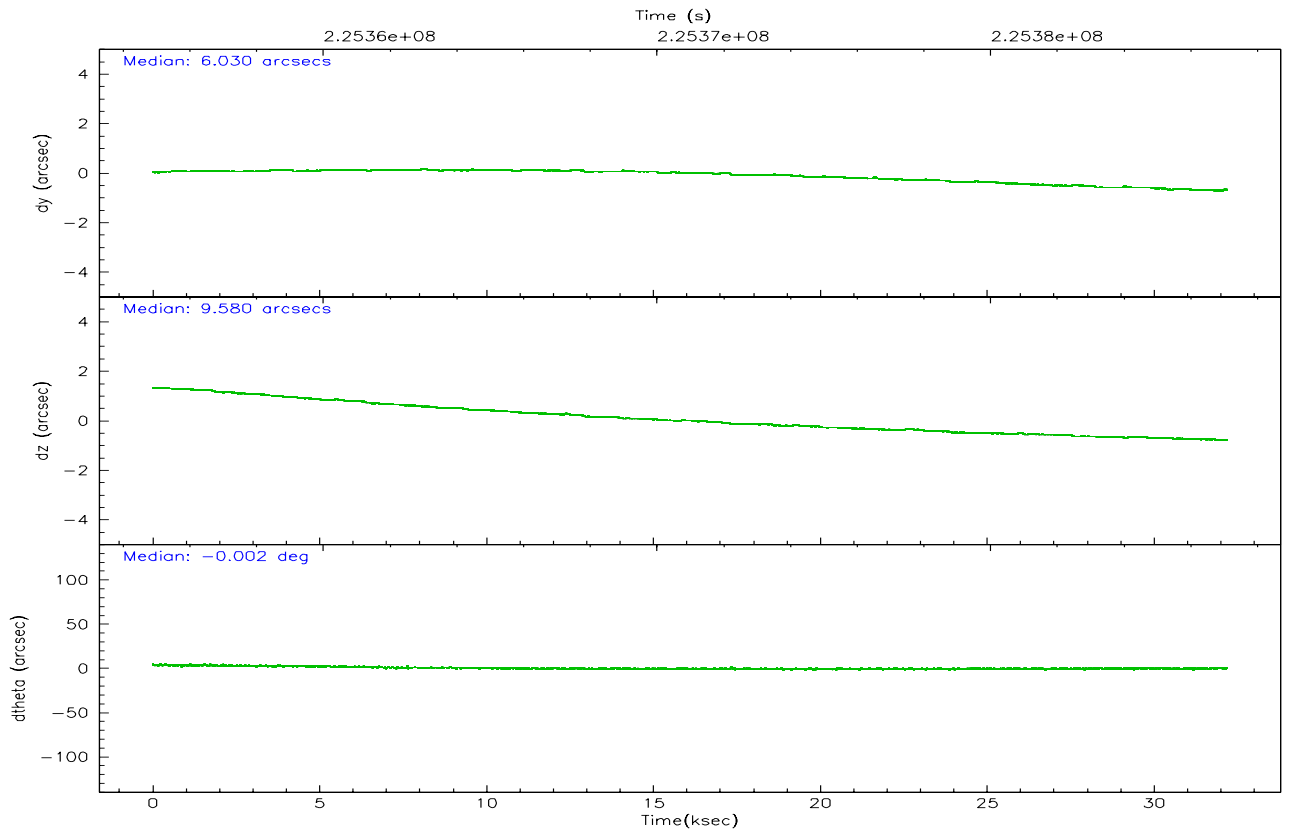
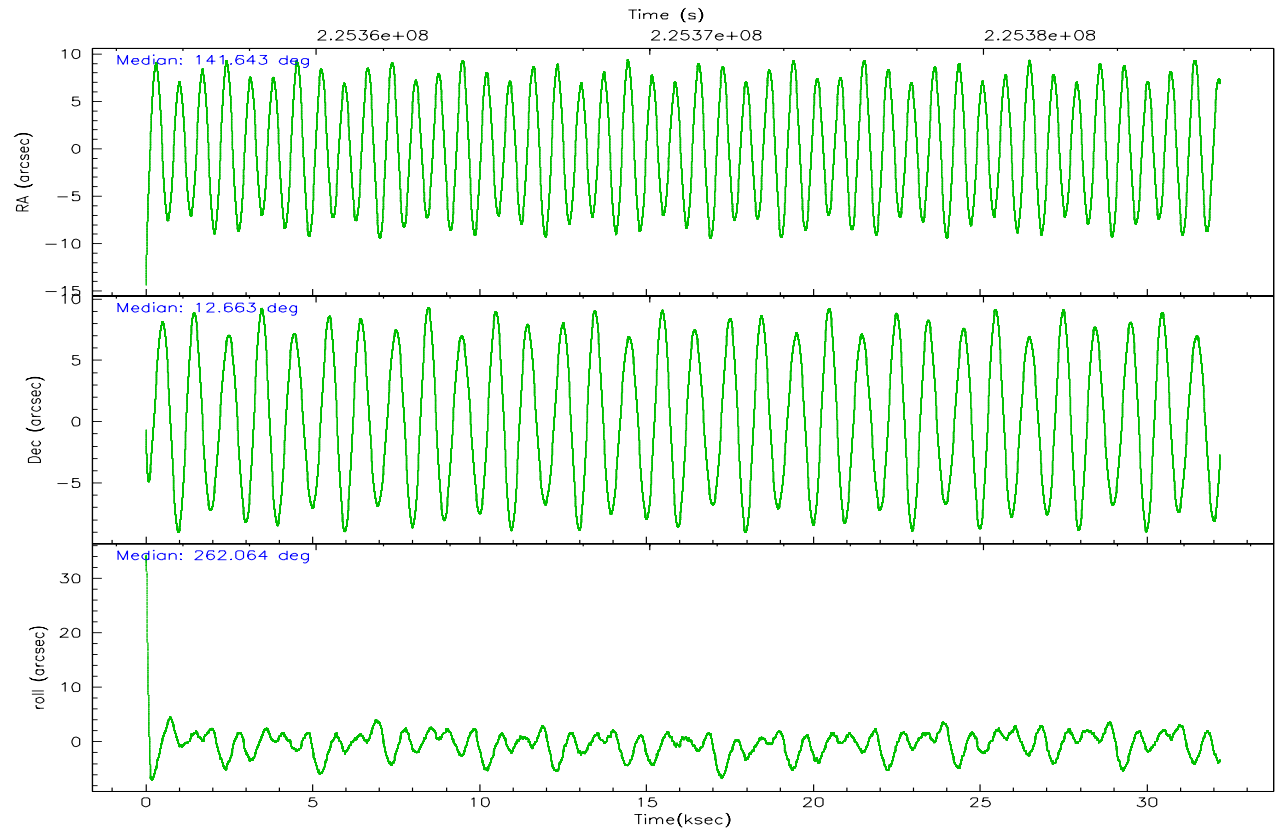
	ccd 0	ccd 1	ccd 2	ccd 3	ccd 6
grade 0 events	6462	30475	6741	7684	7303
	3%	14%	3%	3%	3%
grade 1 events	98	531	102	98	75
	0%	0%	0%	0%	0%
grade 2 events	4446	7403	4465	4091	4184
	2%	3%	2%	2%	2%
grade 3 events	2208	3319	2080	2191	2247
	1%	1%	1%	1%	1%
grade 4 events	2027	3132	2021	2119	2132
	1%	1%	1%	1%	1%
grade 5 events	6792	7609	6552	7676	7415
	3%	3%	3%	3%	3%
grade 6 events	3698	4965	3499	3712	4078
	2%	2%	1%	1%	2%
grade 7 events	149999	151806	172354	166279	166750
	85%	72%	87%	85%	85%

## 2.2 Compared Parameters

Parameter	Planned	Actual	Parameter	Planned	Actual
Instrument	ACIS	ACIS	Obspar format version number	6	6
Detector	ACIS-01236	ACIS-01236	Obspar file type	PREDICTED	ACTUAL
Grating	NONE	NONE	Obspar update status	NONE	UPDATED
Data mode	VFAINT	VFAINT	On-chip summing requested	N	N
Observation mode	POINTING	POINTING	Subarray requested	NONE	NONE
Pointing RA	141.632148	141.6428177844562	Alternating exposures requested	N	N
Pointing Dec	12.688247	12.66291722711608	Primary exposure time	0.000000	3.1
Pointing Roll	261.871069	262.0774309953214			
SIM focus pos (mm)	-0.782348	-0.7809083437167272			
SIM defocus (mm)	0	0.001439871863259334			
SIM translation stage pos (mm)	-225.840463	-225.8458576473255			
SIM translation stage offset (mm)	-7.752	-7.746595355604228			
Observation start time	225355085.184000	225353941.12455			
Observation start date	2005-02-21T06:37:01	2005-02-21T06:19:01			
Observation end time	225387085.184000	225387824.03858			
Observation end date	2005-02-21T15:30:21	2005-02-21T15:43:44			
Read mode	TIMED	TIMED			

### 2.3 Aspect





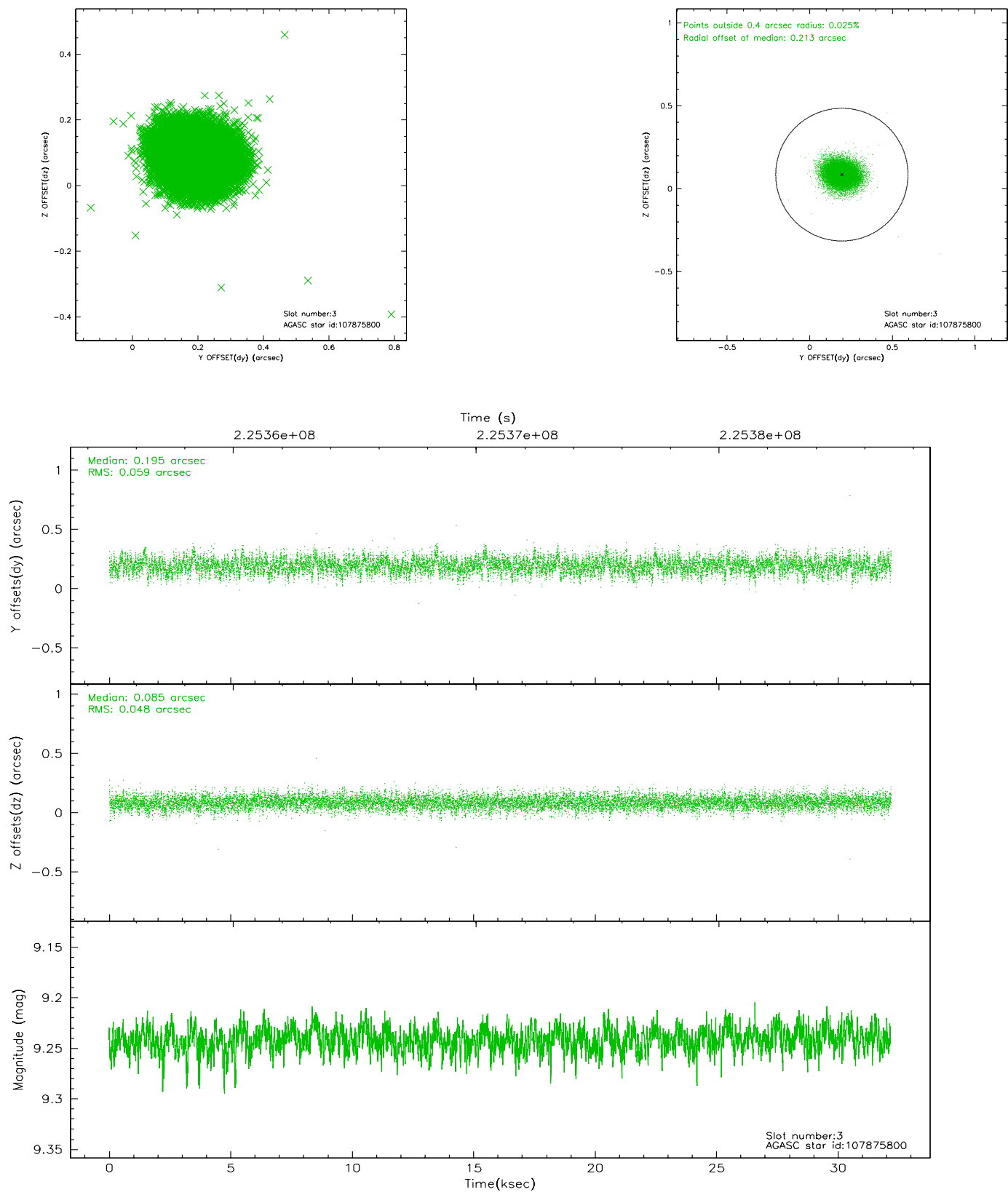
### Slot Statistics

slot	status	id	mag	n_pts	med_dy	med_dz	dr1	dr2	ra	dec	mean_y	mean_z
0	FID	ACIS-I-1	7.23	7850	0.074	-0.051	0.016	0.037	0.000000	0.000000	933.73	-992.22
1	FID	ACIS-I-5	7.22	7850	-0.212	0.072	0.014	0.026	0.000000	0.000000	-1814.63	905.35
2	FID	ACIS-I-6	7.25	7850	0.049	0.050	0.019	0.034	0.000000	0.000000	399.19	1549.90
3	GUIDE	107875800	9.24	15687	0.195	0.085	0.080	0.131	142.127320	12.199859	1492.58	1973.62
4	GUIDE	107876712	6.76	15700	-0.125	-0.070	0.064	0.106	142.139443	12.385311	825.62	1919.57
5	GUIDE	108269584	8.55	15697	0.013	-0.135	0.062	0.099	141.684428	12.507889	617.27	273.81
6	GUIDE	108273032	9.09	15681	-0.016	0.093	0.074	0.121	141.083954	12.520007	870.75	-1821.53
7	GUIDE	108273952	7.80	15624	-0.069	0.023	0.063	0.100	142.111925	12.674985	-191.97	1673.99

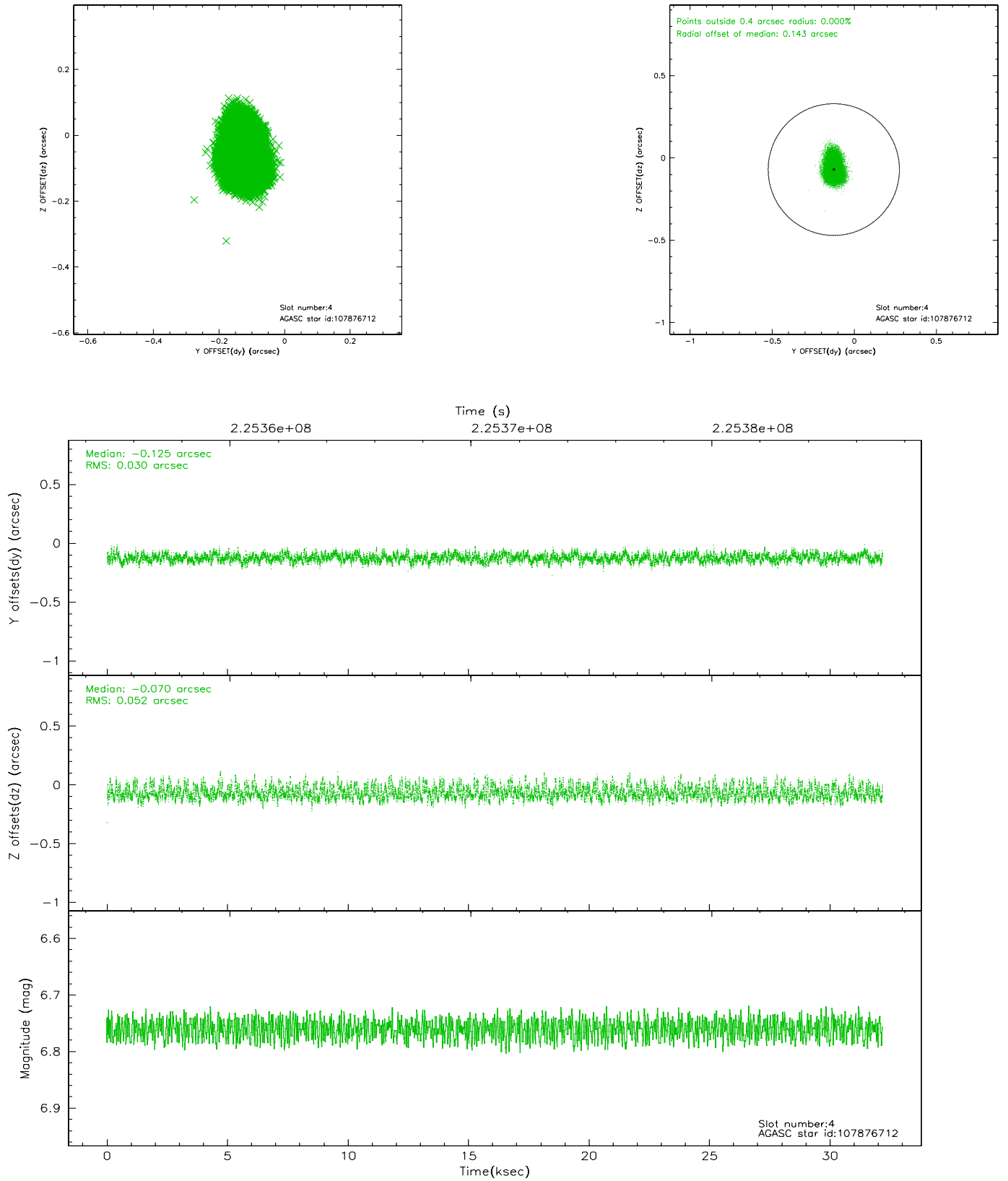


## 2.4 Star Slots

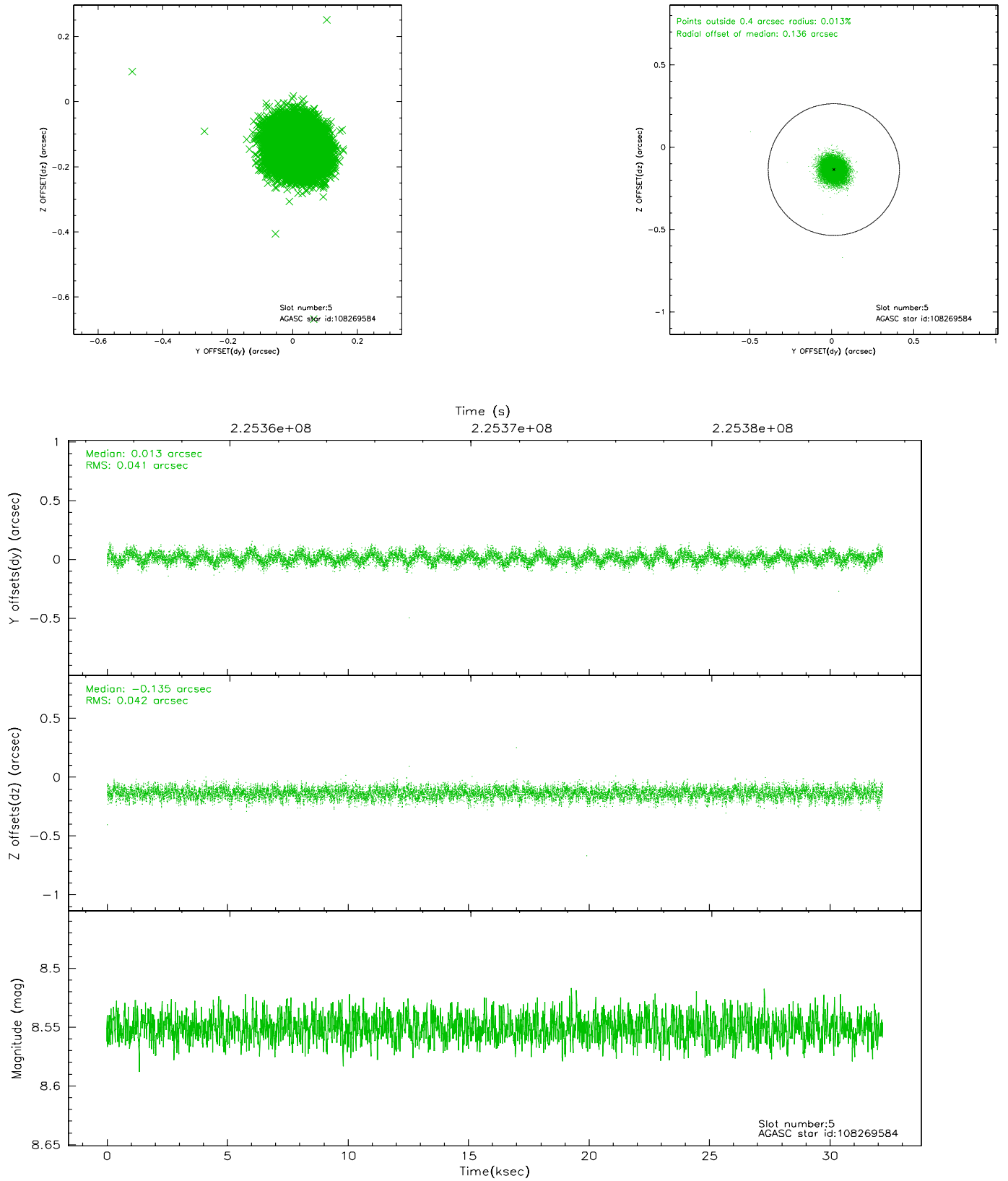
### 2.4.1 Slot 3



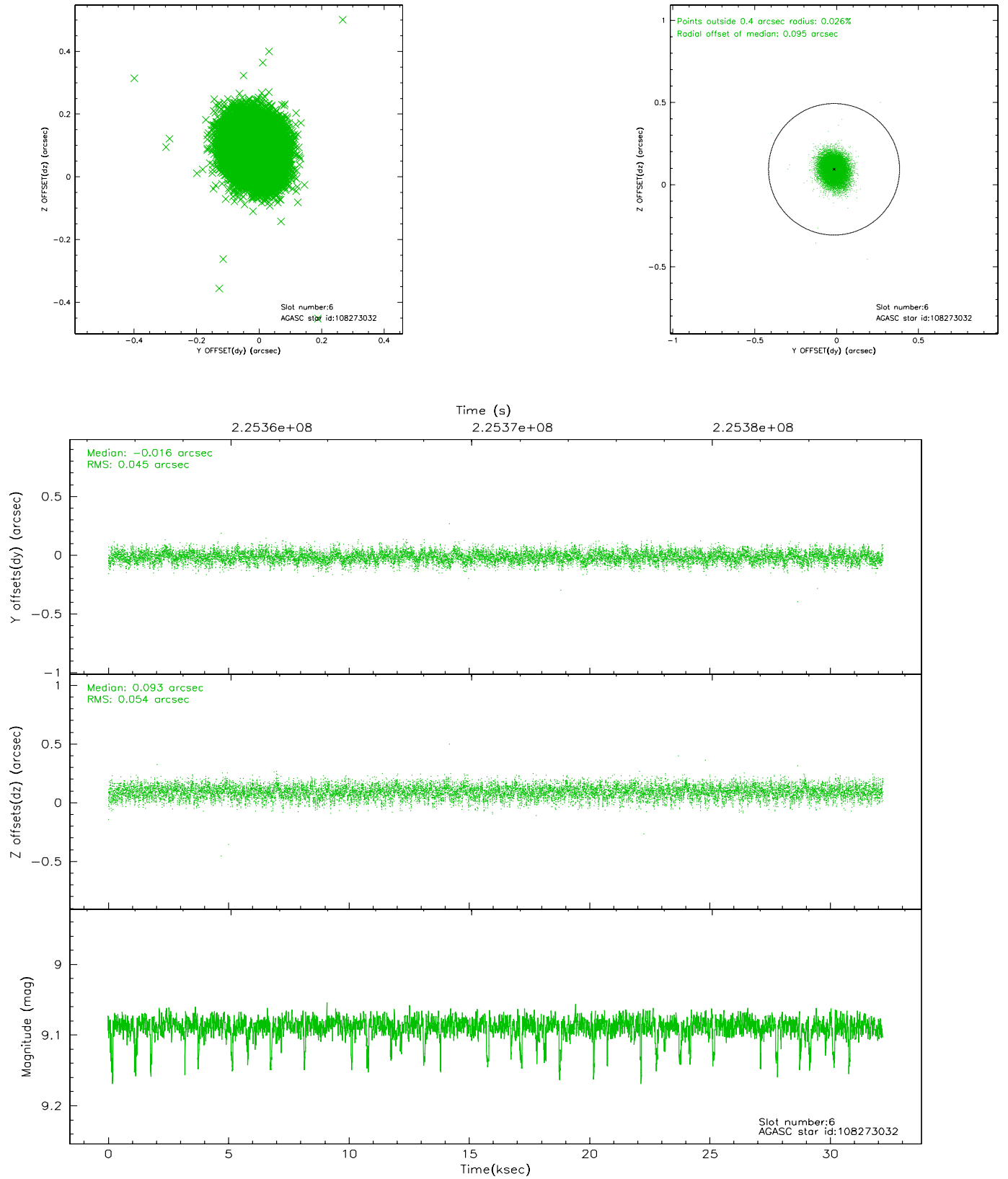
## 2.4.2 Slot 4



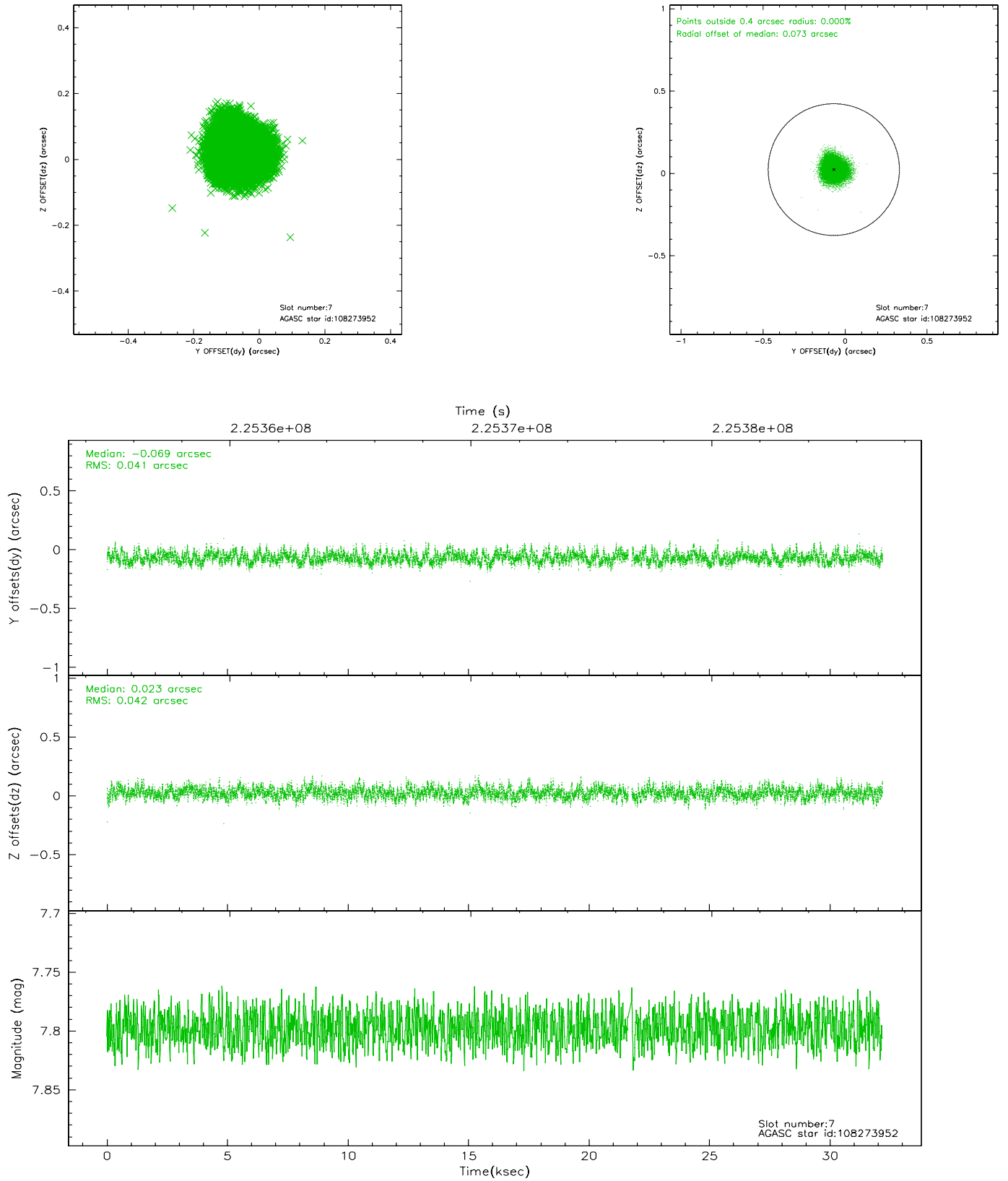
### 2.4.3 Slot 5



## 2.4.4 Slot 6

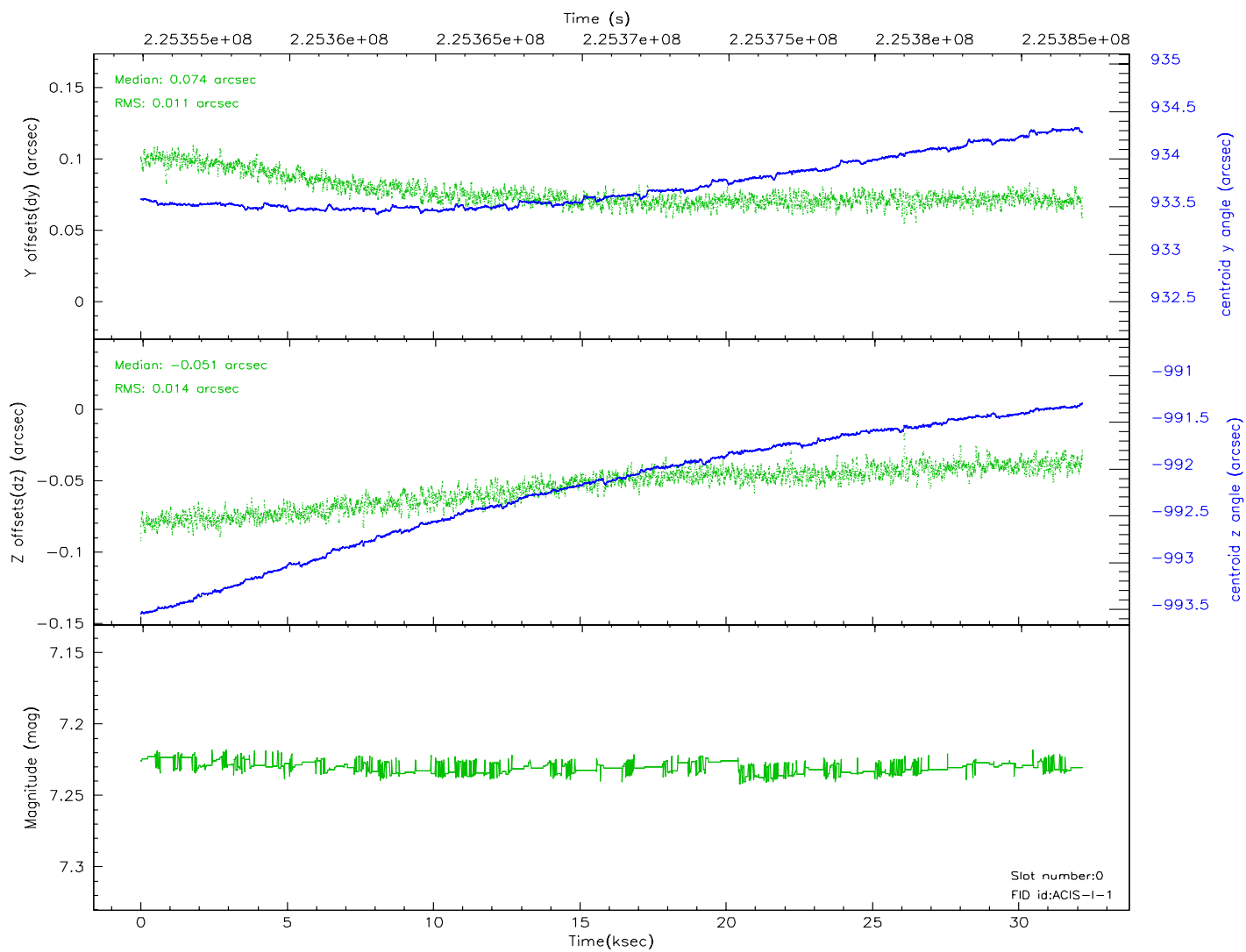
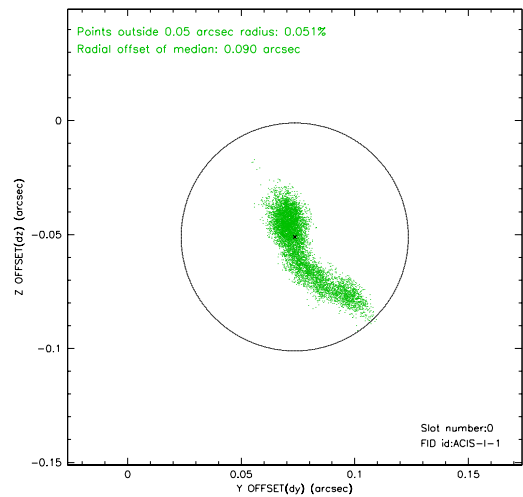
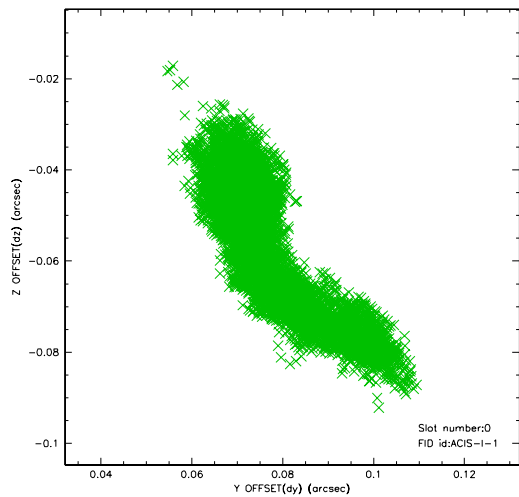


## 2.4.5 Slot 7

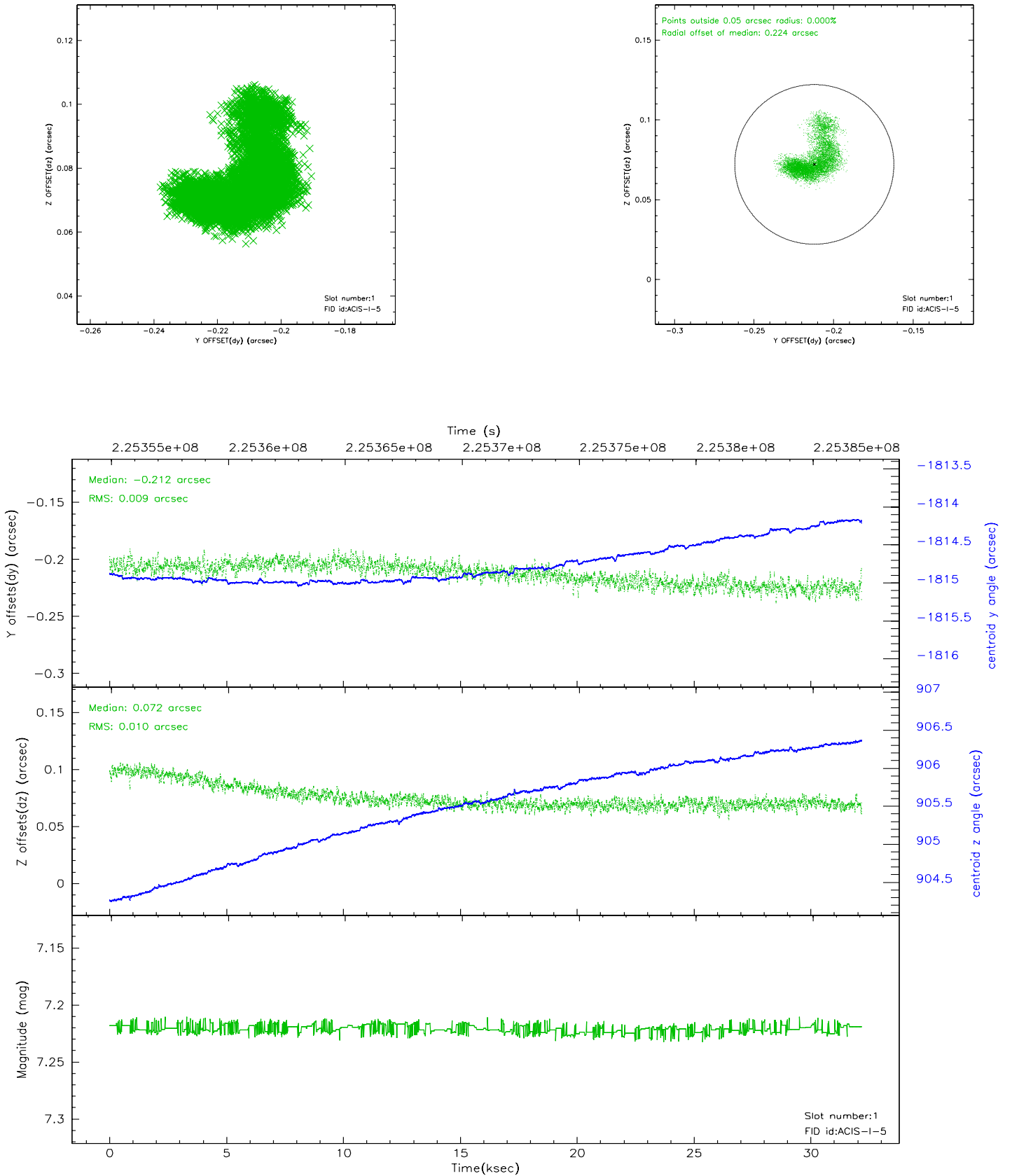


## 2.5 FID Slots

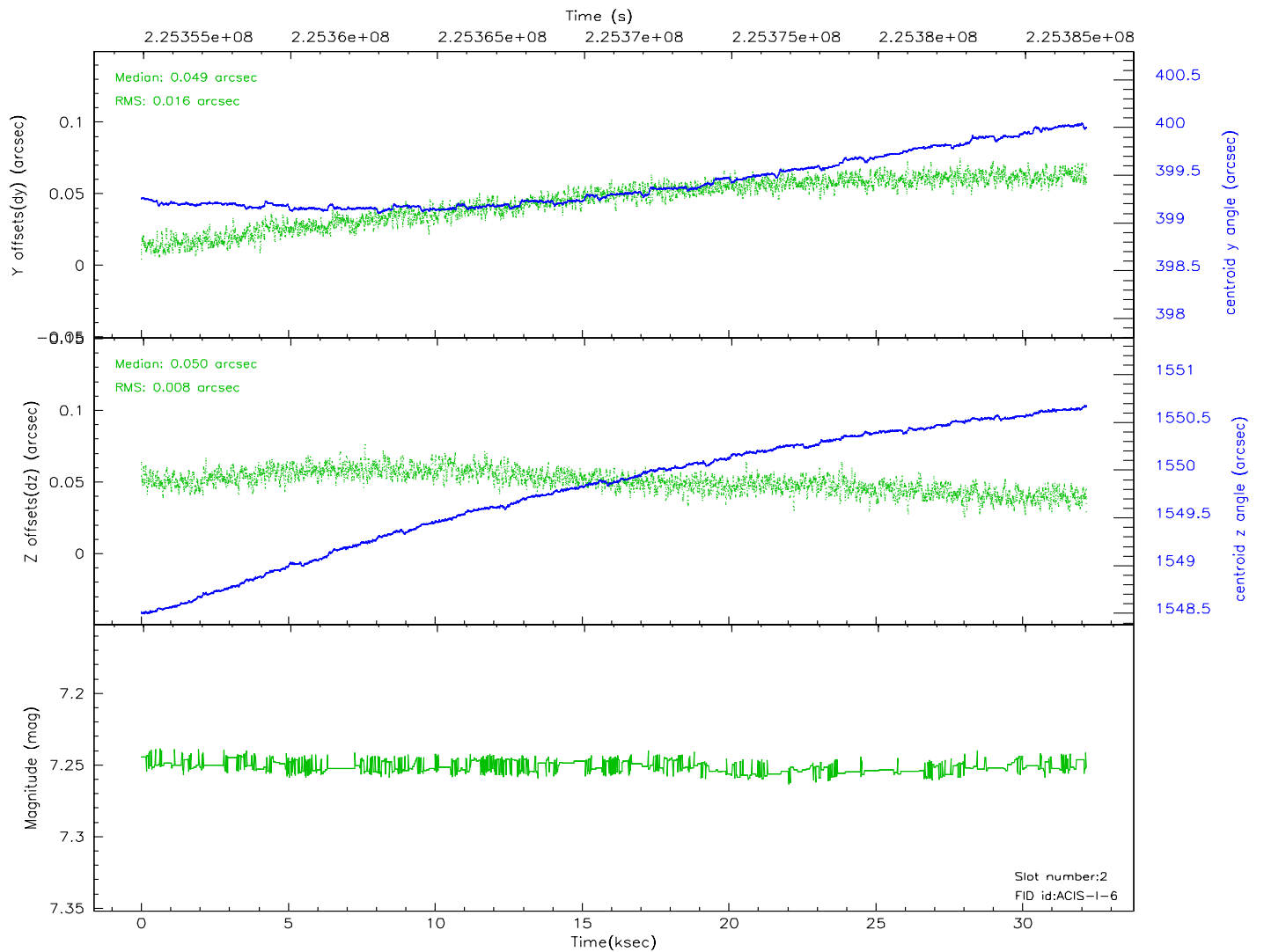
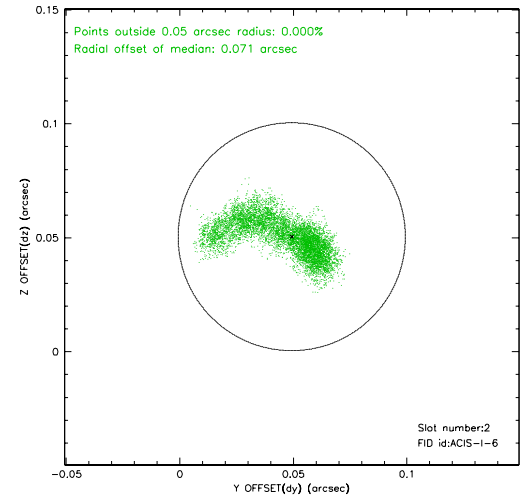
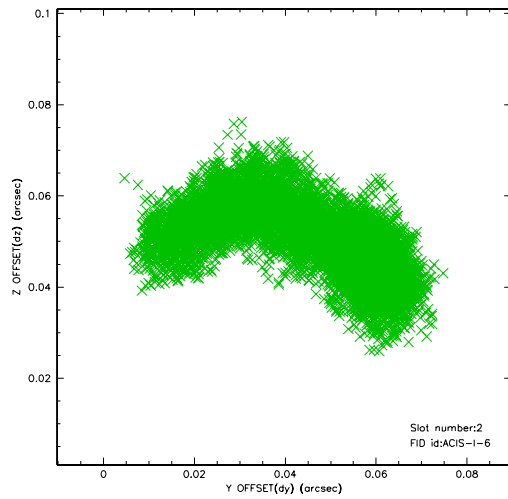
### 2.5.1 Slot 0



## 2.5.2 Slot 1

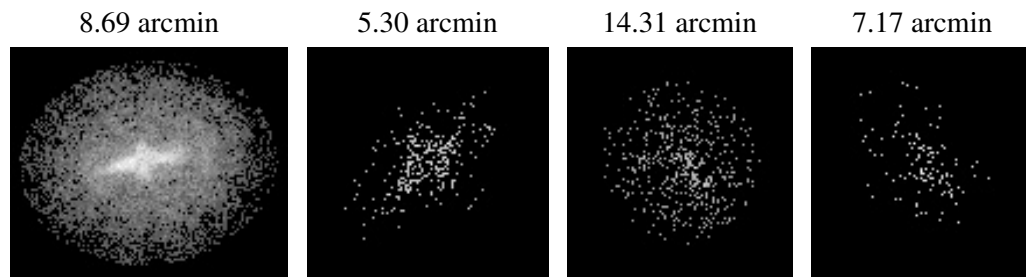


### 2.5.3 Slot 2





### 3 Point Sources



## A Summary

### A.1 Status

V&V Scientist	Beth Sundheim
V&V Date (YYYY-MM-DD)	2006.02.24
V&V Edition	1
V&V Disposition and Status	OK
V&V Charge Time	31.76875

### A.2 Comments