

V&V Reference Report

L2 ASCDS Version : 8.5.1

Observation 5826 - L2 Version 3
Chandra X-Ray Center

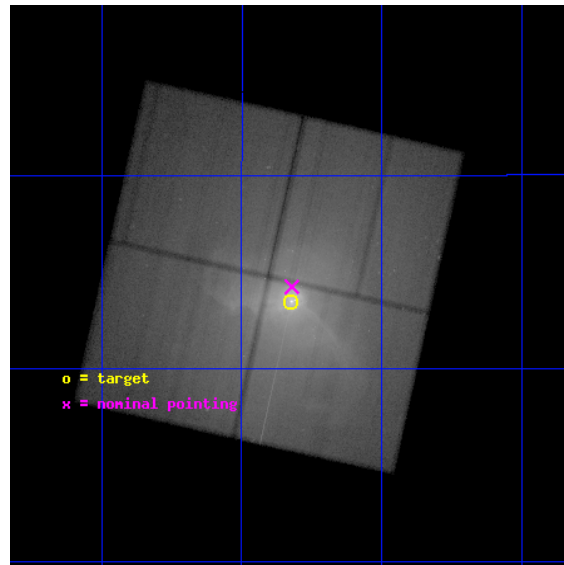
L2 Processing Date : Dec 18 2012

Contents

1	Front	2
2	OBI	3
2.1	OBI	3
2.1.1	Images	3
2.1.2	Bias	3
2.1.3	Parameters	4
2.1.4	Events	4
2.2	Compared Parameters	5
2.3	Aspect	6
2.4	Star Slots	9
2.4.1	Slot 3	9
2.4.2	Slot 4	10
2.4.3	Slot 5	11
2.4.4	Slot 6	12
2.4.5	Slot 7	13
2.5	FID Slots	14
2.5.1	Slot 0	14
2.5.2	Slot 1	15
2.5.3	Slot 2	16
A	Summary	17
A.1	Status	17
A.2	Comments	17

1 Front

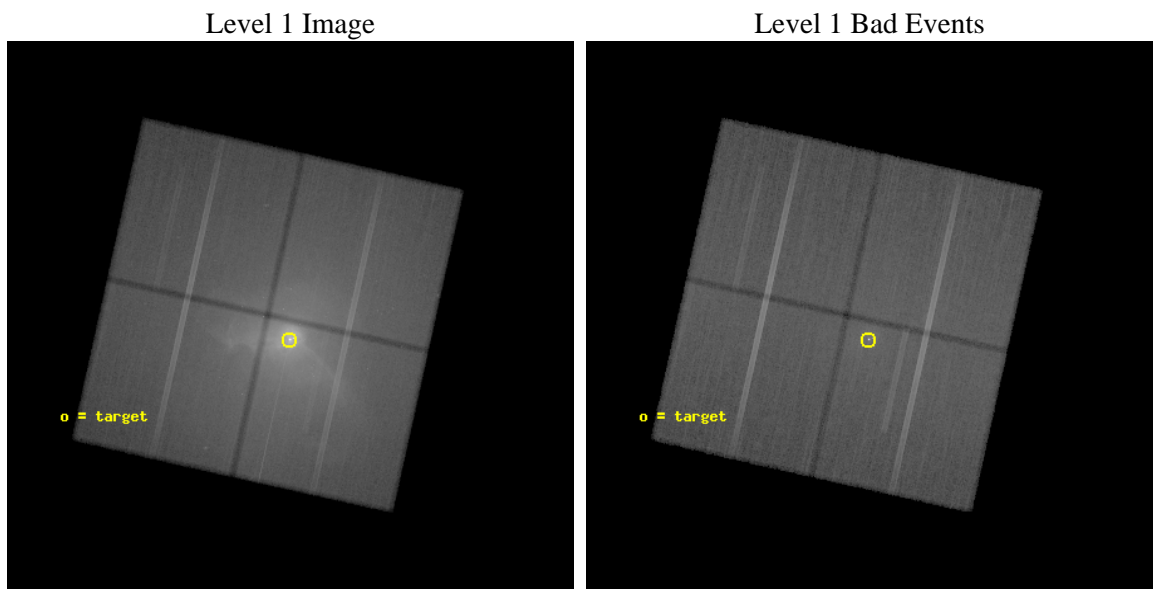
seq_num	800538	Sequence number
obs_id	5826	Observation id
title	The History of AGN Activity in M87 and the Interaction of Nuclear Outbursts with the Surrounding Atmosphere	Proposal title
observer	Dr. william forman	Principal investigator
object	M87	Source name
dtcycle	0	
cycle	P	events from which exps? Prim/Second/Both
ra_targ	187.70625	Observer's specified target RA [deg]
dec_targ	12.391111	Observer's specified target Dec [deg]
ra_nom	187.70526817353	Nominal RA [deg]
dec_nom	12.403831655396	Nominal Dec [deg]
roll_nom	102.60890032839	Nominal Roll [deg]
revision	3	Processing version of data
ontime	128435.11905077	Sum of GTIs [s]
livetime	126757.01966781	Livetime [s]
ontime0	128434.99591094	Sum of GTIs [s]
ontime1	128425.61395019	Sum of GTIs [s]
ontime2	128425.65502024	Sum of GTIs [s]
ontime3	128435.11905077	Sum of GTIs [s]
l2events	4700145	Number of level 2 events



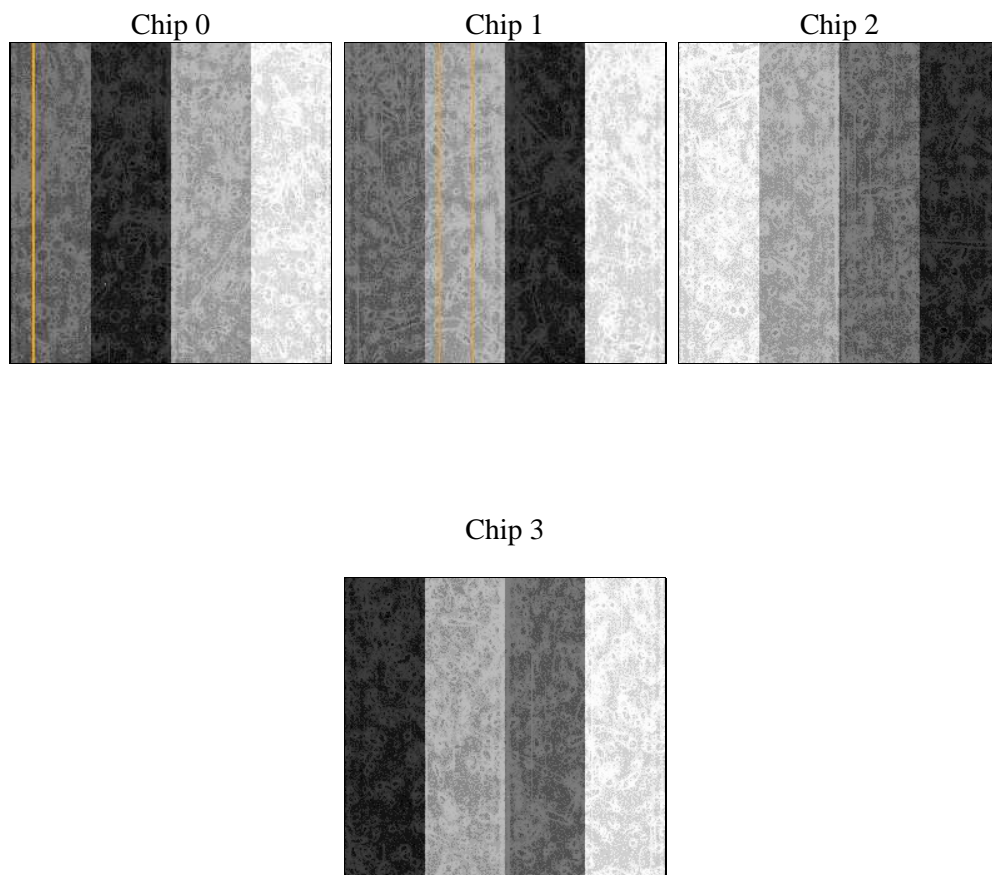
2 OBI

2.1 OBI

2.1.1 Images



2.1.2 Bias



2.1.3 Parameters

obi_num	0	Obi number	sched_exp_time	128394.759000	[s] Scheduled observation exposure time
ascdsver	8.5.1	Processing system revision	ontime	128435.11905077	Sum of GTIs [s]
caldsver	4.5.5	 	ontime0	128434.99591094	Sum of GTIs [s]
date	2012-12-18T15:24:54	Date and time of file creation	ontime1	128425.61395019	Sum of GTIs [s]
revision	3	Processing version of data	ontime2	128425.65502024	Sum of GTIs [s]
			ontime3	128435.11905077	Sum of GTIs [s]
			l1events	7924053	Number of level 1 events

2.1.4 Events

	ccd 0	ccd 1	ccd 2	ccd 3
level 1 events	1335553	1684509	1883372	3020619
rejected events	683118	686805	789139	793231
rejected %	51%	40%	41%	26%

	ccd 0	ccd 1	ccd 2	ccd 3
grade 0 events	506295	794869	885665	1857272
	37%	47%	47%	61%
grade 1 events	2533	3458	5055	16213
	0%	0%	0%	0%
grade 2 events	71952	103141	107111	200102
	5%	6%	5%	6%
grade 3 events	24834	33507	35333	61358
	1%	1%	1%	2%
grade 4 events	24024	33209	35228	61235
	1%	1%	1%	2%
grade 5 events	30283	33597	30556	44165
	2%	1%	1%	1%
grade 6 events	25351	32999	30916	47482
	1%	1%	1%	1%
grade 7 events	650281	649729	753508	732792
	48%	38%	40%	24%

2.2 Compared Parameters

Parameter	Planned	Actual	Parameter	Planned	Actual
Instrument	ACIS	ACIS	Obspar format version number	7	7
Detector	ACIS-0123	ACIS-0123	Obspar file type	PREDICTED	ACTUAL
Grating	NONE	NONE	Obspar update status	NONE	UPDATED
Data mode	VFAINT	VFAINT	Number of optional ACIS chips dropped	0	0
Observation mode	POINTING	POINTING	On-chip summing requested	N	N
[deg] Pointing RA	187.724333	187.7052681735339	Subarray requested	NONE	NONE
[deg] Pointing Dec	12.383731	12.40383165539642	Alternating exposures requested	N	N
[deg] Pointing Roll	102.396126	102.6089003283851	[s] Primary exposure time	0.000000	3.1
[mm] SIM focus pos	-0.782348	-0.7809083437167272			
[mm] SIM defocus	0	0.001439871863259334			
[mm] SIM translation stage pos	-231.592463	-231.5960967419932			
[mm] SIM translation stage offset	-2	-1.996356260936523			
[s] Observation start time (MET)	226268078.184000	226266714.94088			
Observation start date	2005-03-03T20:13:34	2005-03-03T19:51:54			
[s] Observation end time (MET)	226396473.184000	226396711.08427			
Observation end date	2005-03-05T07:53:29	2005-03-05T07:58:31			
Read mode	TIMED	TIMED			

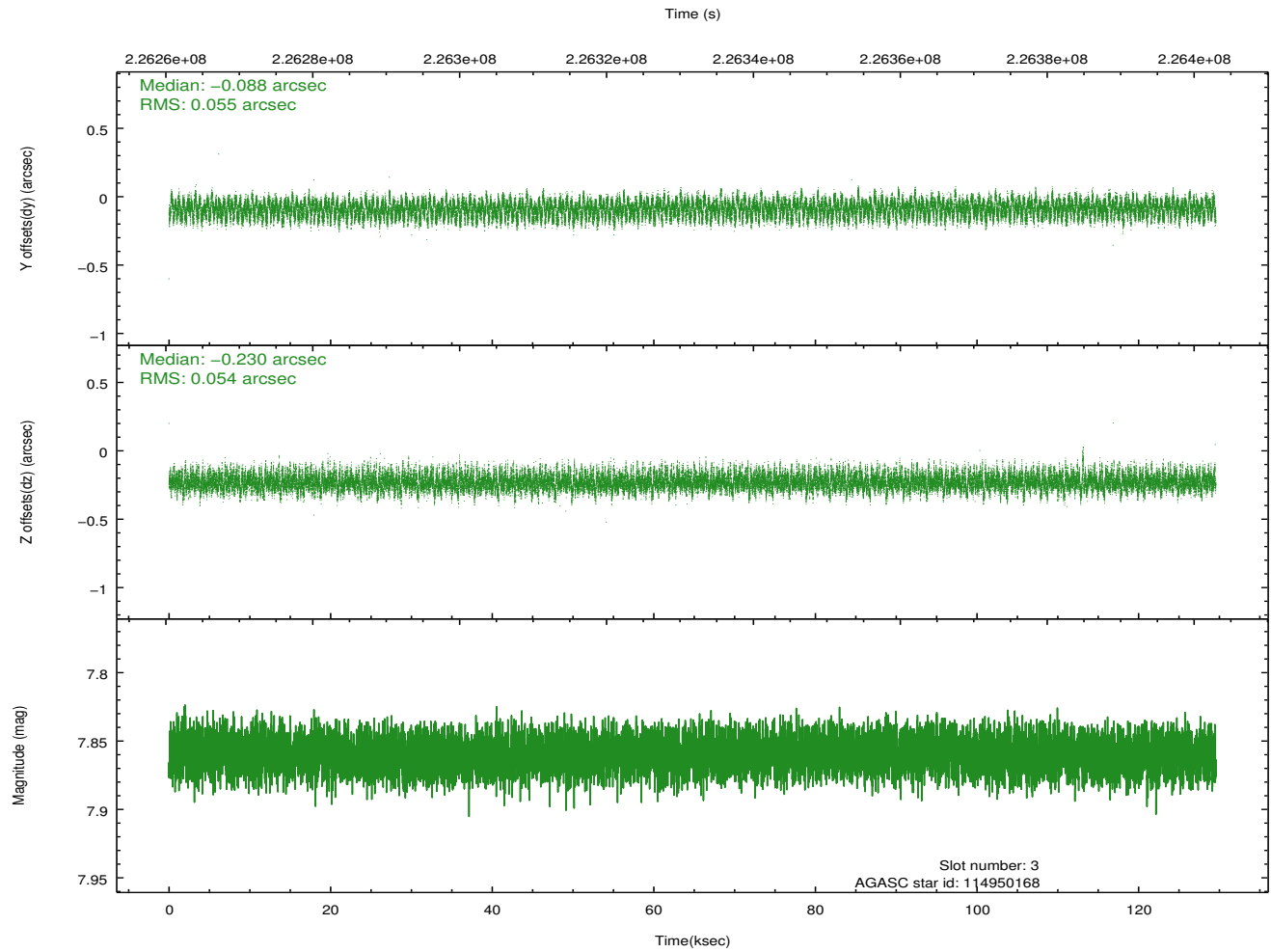
2.3 Aspect

Slot Statistics

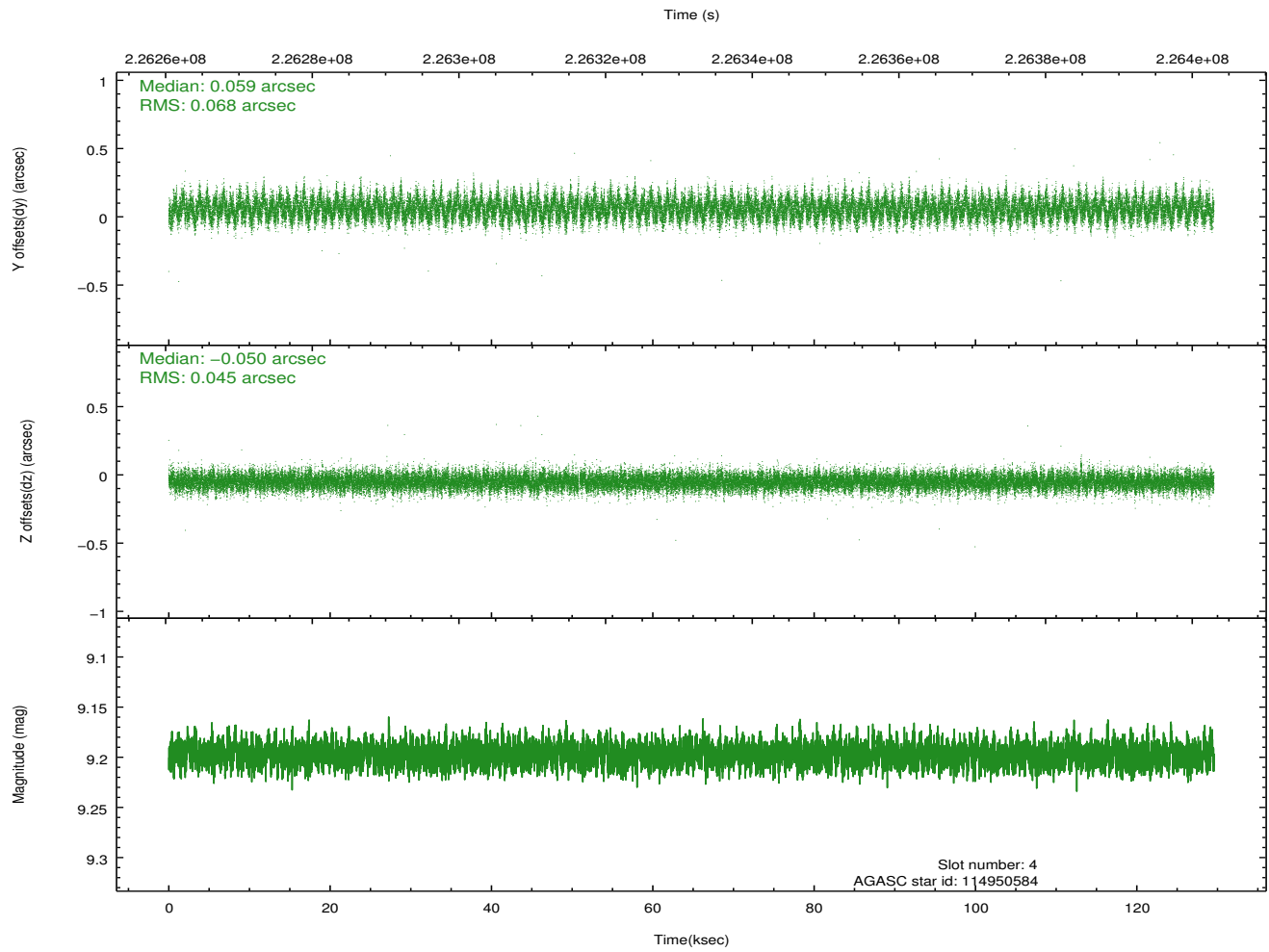
slot	status	id	mag	n_pts	med_dy	med_dz	dr1	dr2	ra	dec	mean_y	mean_z
0	FID	ACIS-I-1	7.24	31601	0.029	0.001	0.016	0.033	0.000000	0.000000	934.08	-873.56
1	FID	ACIS-I-5	7.23	31599	-0.221	0.032	0.020	0.032	0.000000	0.000000	-1814.30	1024.05
2	FID	ACIS-I-6	7.25	31600	0.101	0.038	0.021	0.043	0.000000	0.000000	399.83	1668.42
3	GUIDE	114950168	7.86	63181	-0.088	-0.230	0.084	0.130	187.143398	12.117441	-495.65	2202.46
4	GUIDE	114950584	9.20	63091	0.059	-0.050	0.085	0.144	187.487323	11.827248	-1777.14	1245.98
5	GUIDE	114952792	9.50	63122	-0.121	-0.130	0.118	0.187	187.070263	12.344747	358.94	2276.84
6	GUIDE	114955056	8.32	63113	0.065	0.369	0.073	0.116	187.914001	12.127854	-1042.68	-453.64
7	GUIDE	114956608	9.64	63161	0.083	0.038	0.141	0.220	187.452443	11.725979	-2106.72	1444.92

2.4 Star Slots

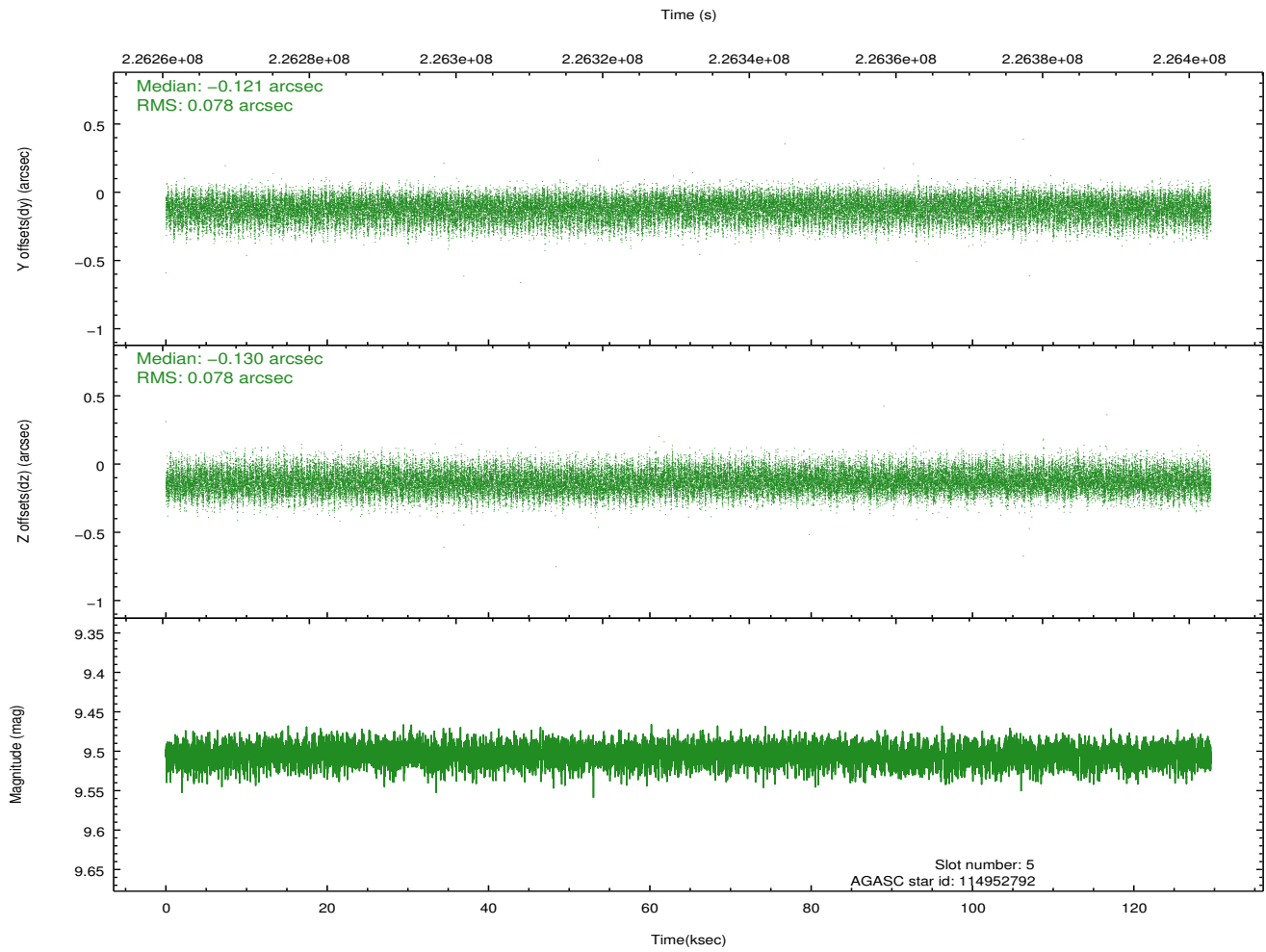
2.4.1 Slot 3



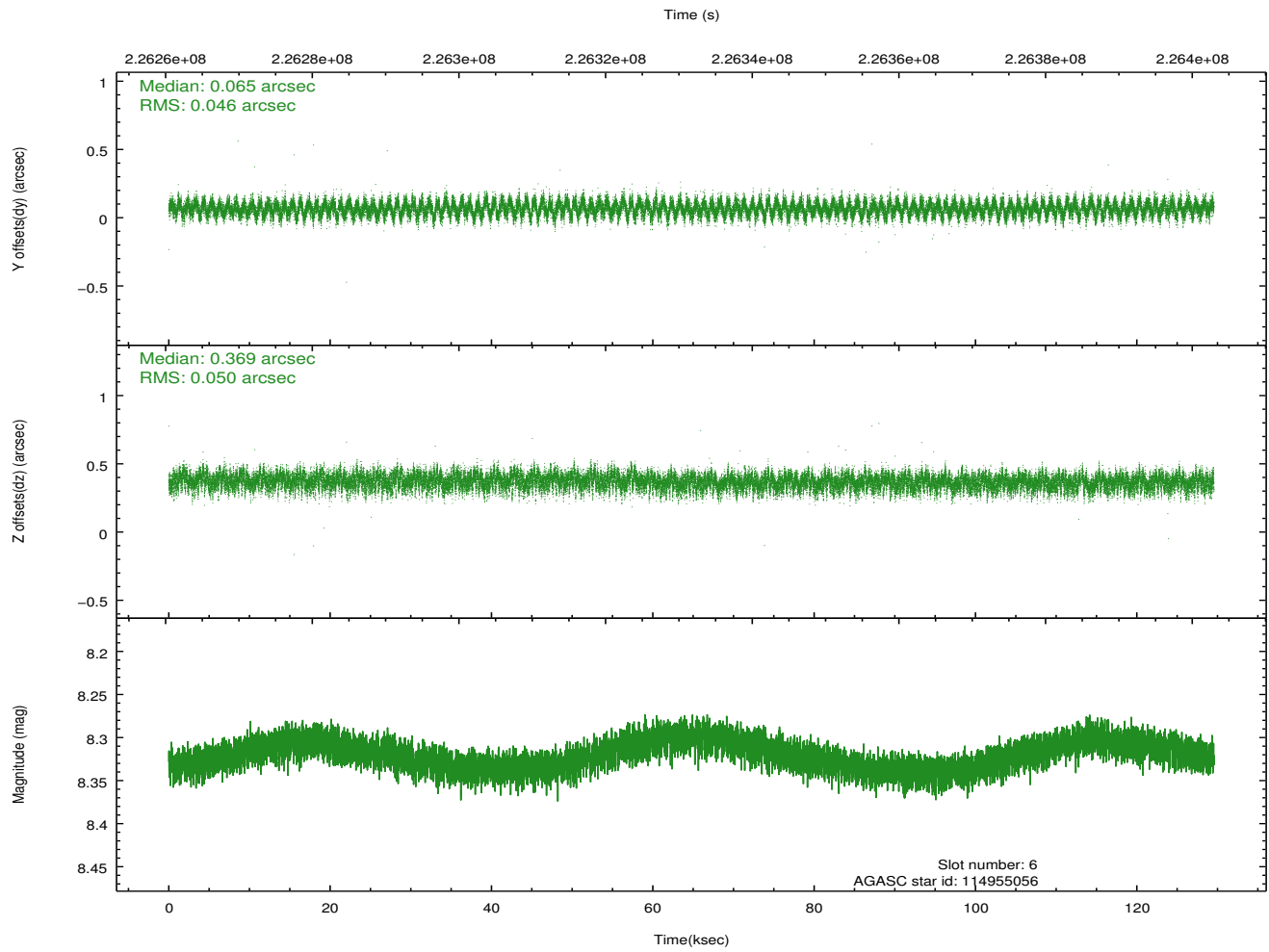
2.4.2 Slot 4



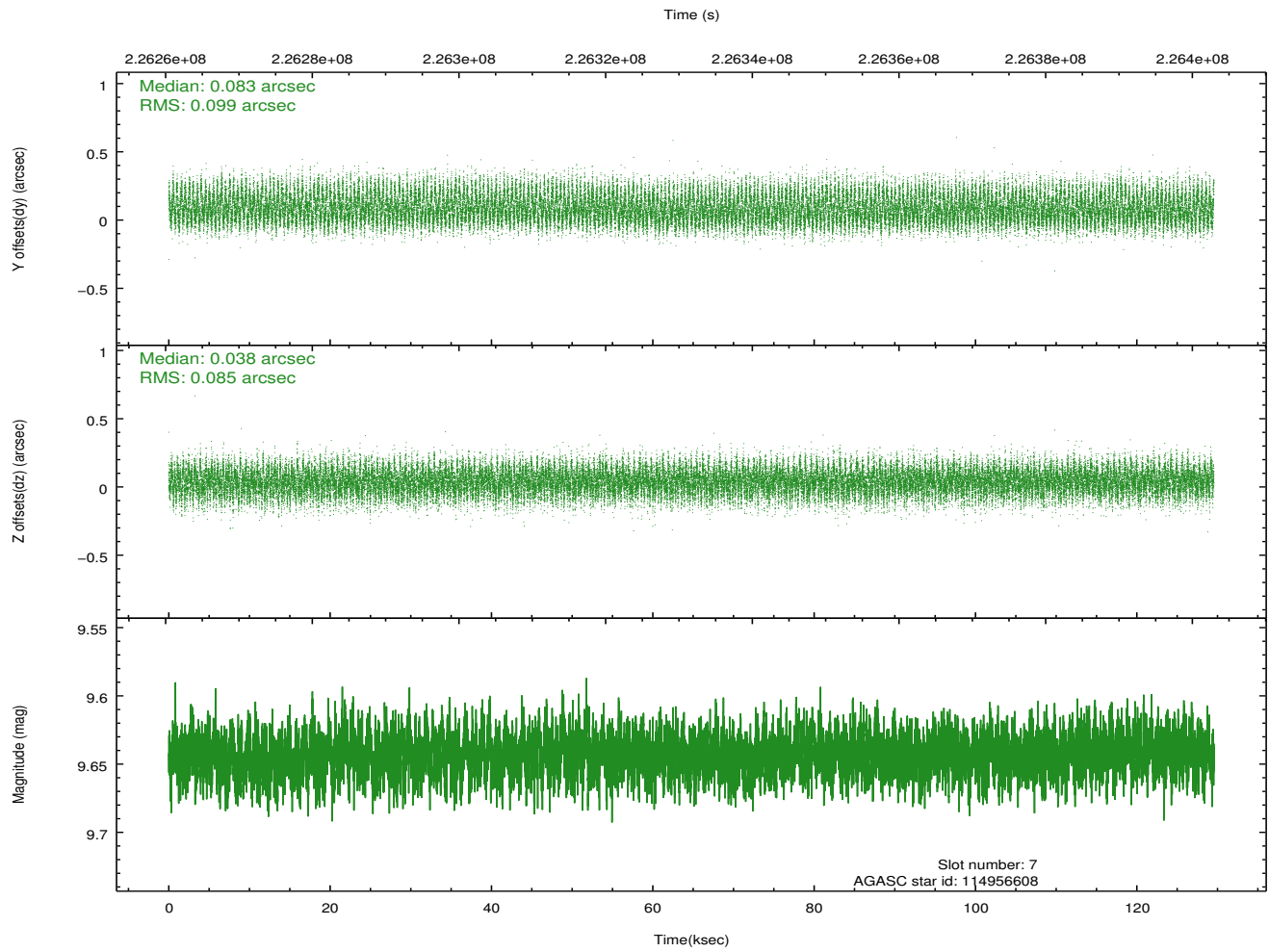
2.4.3 Slot 5



2.4.4 Slot 6

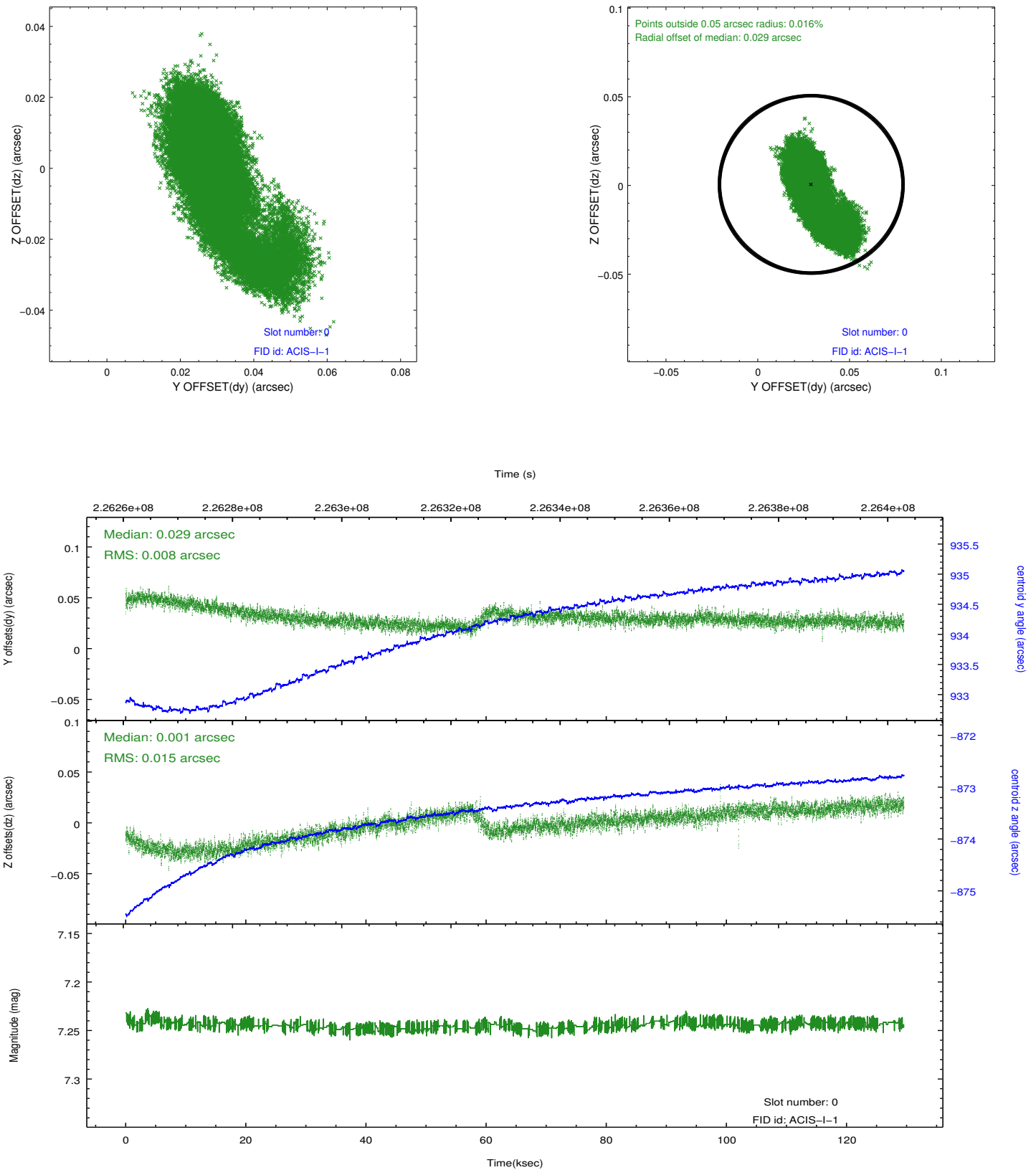


2.4.5 Slot 7

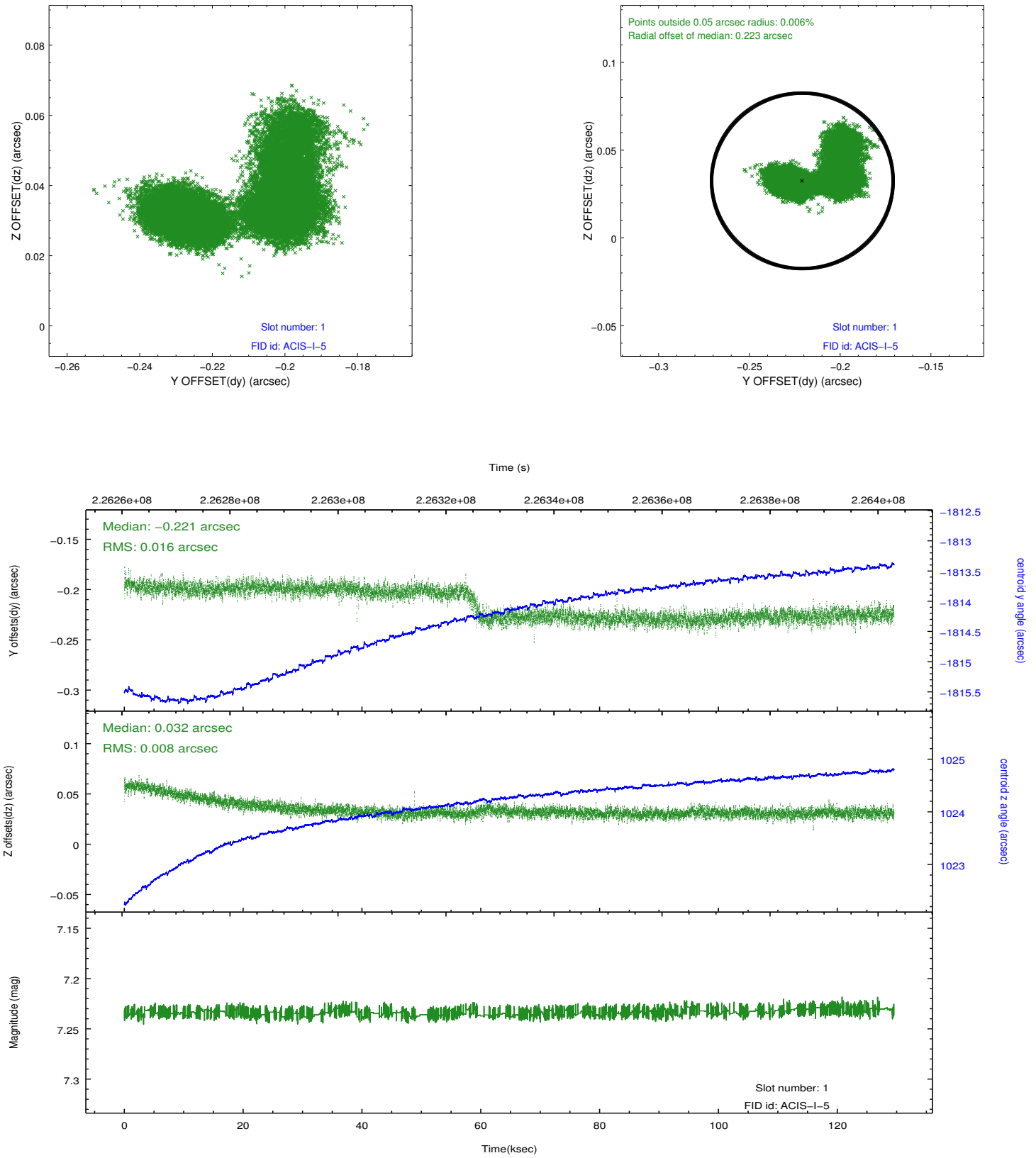


2.5 FID Slots

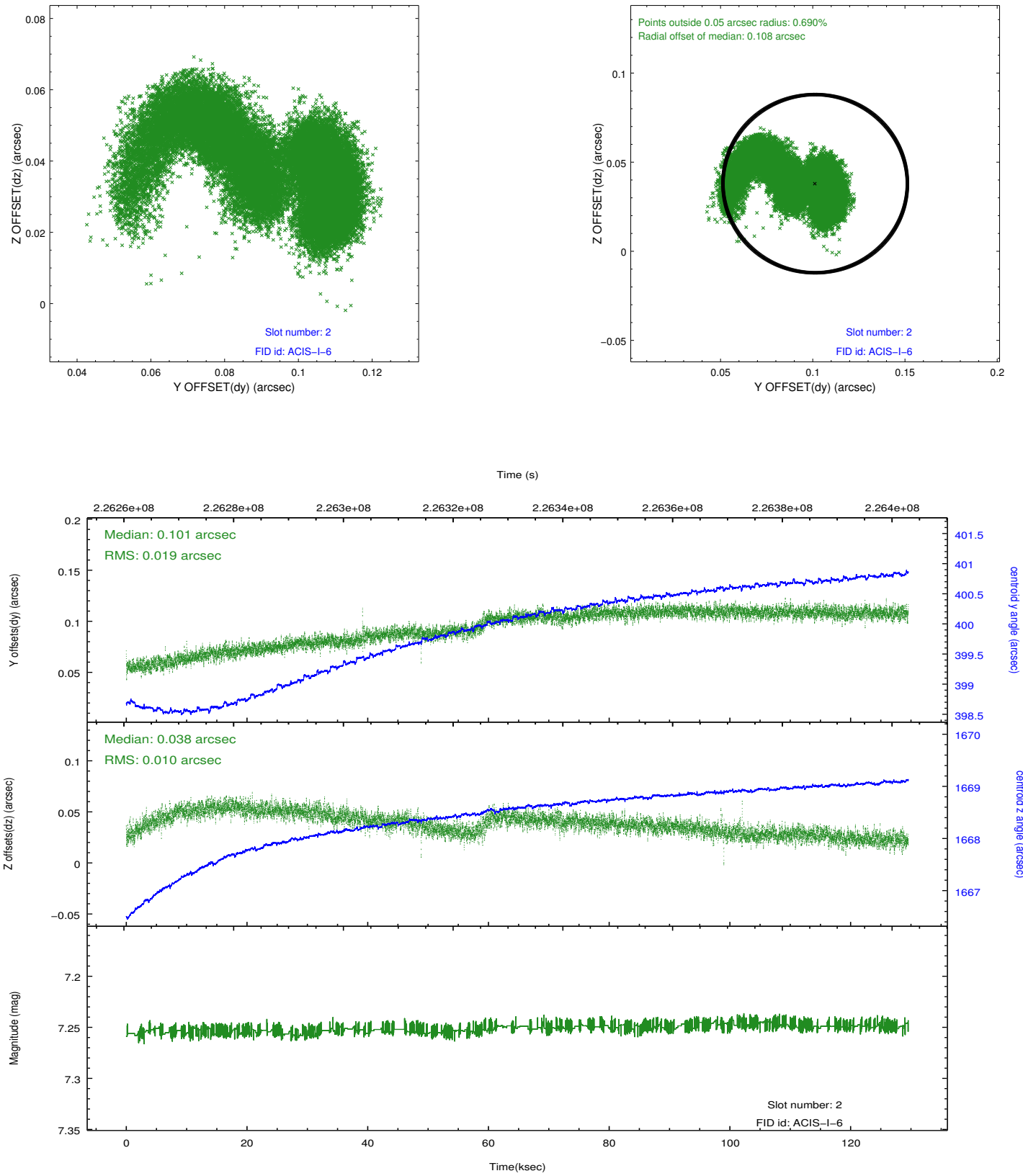
2.5.1 Slot 0



2.5.2 Slot 1



2.5.3 Slot 2



A Summary

A.1 Status

V&V Scientist	Jen Lauer
V&V Date (YYYY-MM-DD)	2013.01.11
V&V Edition	1
V&V Disposition and Status	OK
V&V Charge Time	128.4358

A.2 Comments