

V&V Reference Report

L2 ASCDS Version : 8.5.1

Observation 5825 - L2 Version 3
Chandra X-Ray Center

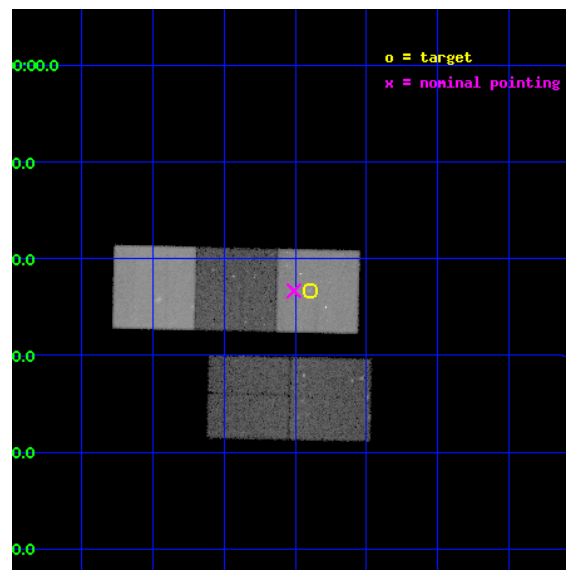
L2 Processing Date : Dec 18 2012

Contents

1	Front	2
2	OBI	3
2.1	OBI	3
2.1.1	Images	3
2.1.2	Bias	3
2.1.3	Parameters	4
2.1.4	Events	4
2.2	Compared Parameters	5
2.3	Aspect	6
2.4	Star Slots	9
2.4.1	Slot 3	9
2.4.2	Slot 4	10
2.4.3	Slot 5	11
2.4.4	Slot 6	12
2.4.5	Slot 7	13
2.5	FID Slots	14
2.5.1	Slot 0	14
2.5.2	Slot 1	15
2.5.3	Slot 2	16
A	Summary	17
A.1	Status	17
A.2	Comments	17

1 Front

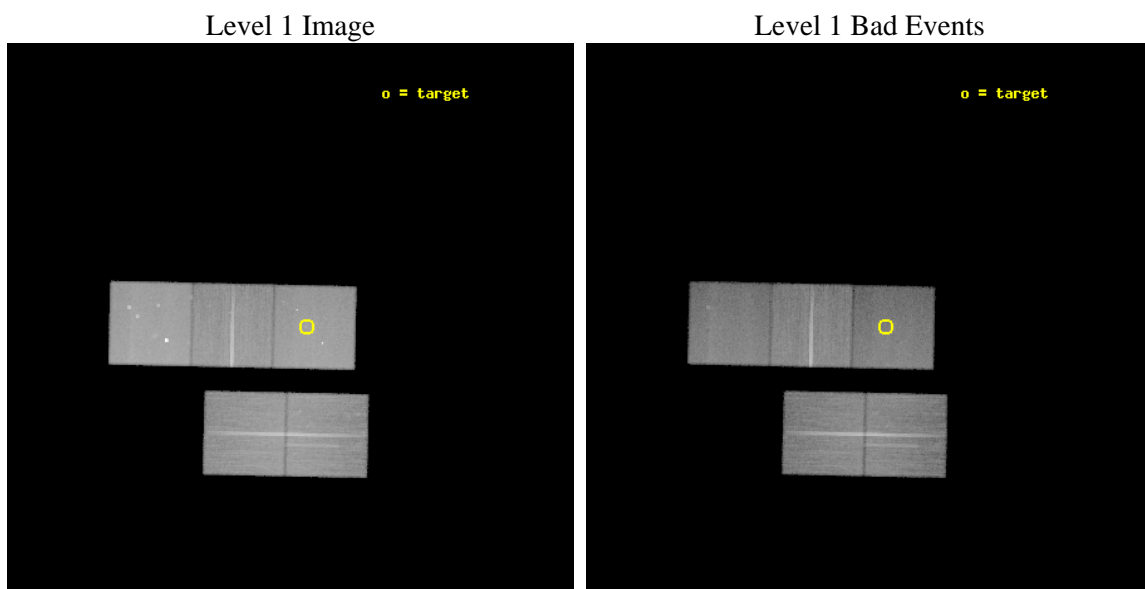
seq_num	800537	Sequence number
obs_id	5825	Observation id
title	X-ray Emission from Optically-Selected, High-Redshift Galaxy Clusters from the RCS Survey	Proposal title
observer	Professor Gordon Garmire	Principal investigator
object	RCS1107.3-0523	Source name
dtcycle	0	
cycle	P	events from which exps? Prim/Second/Both
ra_targ	166.848167	Observer's specified target RA [deg]
dec_targ	-5.387639	Observer's specified target Dec [deg]
ra_nom	166.87735141643	Nominal RA [deg]
dec_nom	-5.3887512539072	Nominal Dec [deg]
roll_nom	1.240282740078	Nominal Roll [deg]
revision	3	Processing version of data
ontime	50120.799903601	Sum of GTIs [s]
livetime	49465.934754465	Livetime [s]
ontime2	50111.376922876	Sum of GTIs [s]
ontime3	50117.658933342	Sum of GTIs [s]
ontime5	50120.799903601	Sum of GTIs [s]
ontime6	50117.658923358	Sum of GTIs [s]
ontime7	50120.799903601	Sum of GTIs [s]
l2events	429698	Number of level 2 events



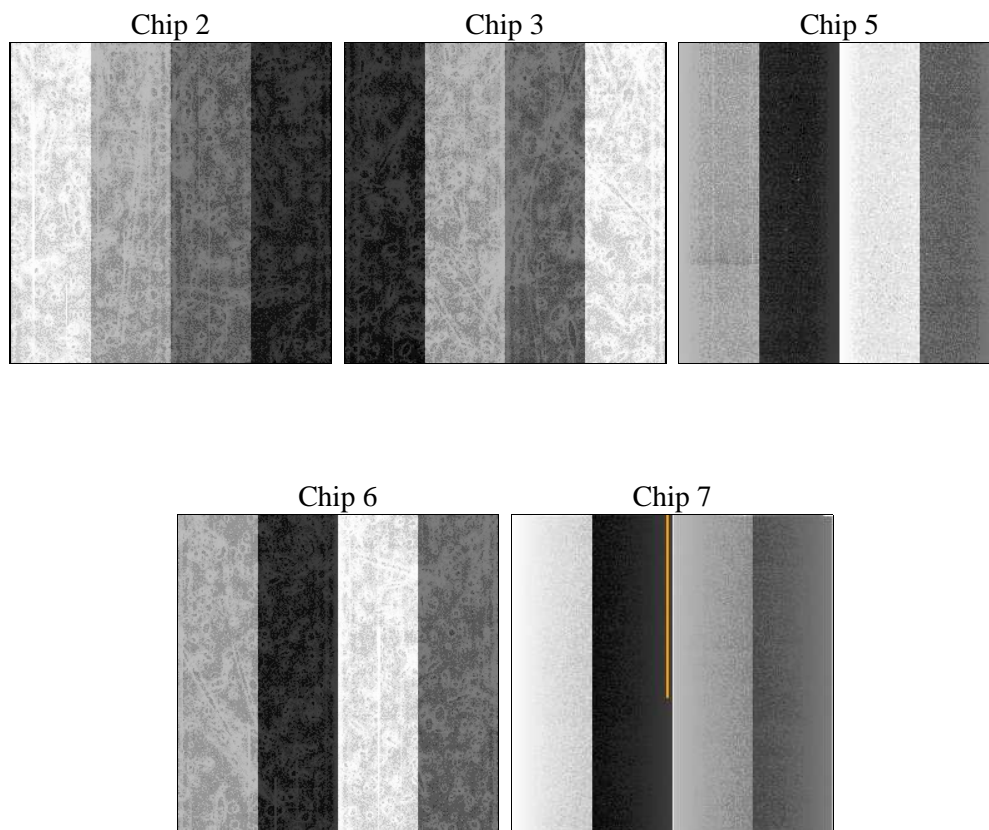
2 OBI

2.1 OBI

2.1.1 Images



2.1.2 Bias



2.1.3 Parameters

obi_num	0	Obi number	sched_exp_time	50000.000000	[s] Scheduled observation exposure time
ascdsver	8.5.1	Processing system revision	ontime	50120.799903601	Sum of GTIs [s]
caldsver	4.5.5	 	ontime2	50111.376922876	Sum of GTIs [s]
date	2012-12-18T11:23:09	Date and time of file creation	ontime3	50117.658933342	Sum of GTIs [s]
revision	3	Processing version of data	ontime5	50120.799903601	Sum of GTIs [s]
			ontime6	50117.658923358	Sum of GTIs [s]
			ontime7	50120.799903601	Sum of GTIs [s]
			l1events	1742900	Number of level 1 events

2.1.4 Events

	ccd 2	ccd 3	ccd 5	ccd 6	ccd 7
level 1 events	321097	310656	436526	317373	357248
rejected events	291492	281296	218589	285857	195529
rejected %	90%	90%	50%	90%	54%

	ccd 2	ccd 3	ccd 5	ccd 6	ccd 7
grade 0 events	10358	10701	29217	11008	15819
	3%	3%	6%	3%	4%
grade 1 events	160	149	376	153	335
	0%	0%	0%	0%	0%
grade 2 events	7210	6430	63769	7055	33110
	2%	2%	14%	2%	9%
grade 3 events	3463	3513	9849	3657	15937
	1%	1%	2%	1%	4%
grade 4 events	3346	3490	9166	3402	15746
	1%	1%	2%	1%	4%
grade 5 events	10616	12603	35038	12921	37756
	3%	4%	8%	4%	10%
grade 6 events	5693	5716	109488	6942	83683
	1%	1%	25%	2%	23%
grade 7 events	280251	268054	179623	272235	154862
	87%	86%	41%	85%	43%

2.2 Compared Parameters

Parameter	Planned	Actual	Parameter	Planned	Actual
Instrument	ACIS	ACIS	Obspar format version number	7	7
Detector	ACIS-23567	ACIS-23567	Obspar file type	PREDICTED	ACTUAL
Grating	NONE	NONE	Obspar update status	NONE	UPDATED
Data mode	VFAINT	VFAINT	Number of optional ACIS chips dropped	0	0
Observation mode	POINTING	POINTING	On-chip summing requested	N	N
[deg] Pointing RA	166.854151	166.8773514164279	Subarray requested	NONE	NONE
[deg] Pointing Dec	-5.403193	-5.388751253907157	Alternating exposures requested	N	N
[deg] Pointing Roll	1.081467	1.24028274007803	[s] Primary exposure time	0.000000	3.1
[mm] SIM focus pos	-0.684267	-0.6828225247311905			
[mm] SIM defocus	0	0.001444936568705701			
[mm] SIM translation stage pos	-190.132523	-190.1400660498719			
[mm] SIM translation stage offset	0	0.00754346686406393			
[s] Observation start time (MET)	226461705.184000	226460337.96215			
Observation start date	2005-03-06T02:00:41	2005-03-06T01:38:57			
[s] Observation end time (MET)	226511705.184000	226512581.70202			
Observation end date	2005-03-06T15:54:01	2005-03-06T16:09:41			
Read mode	TIMED	TIMED			

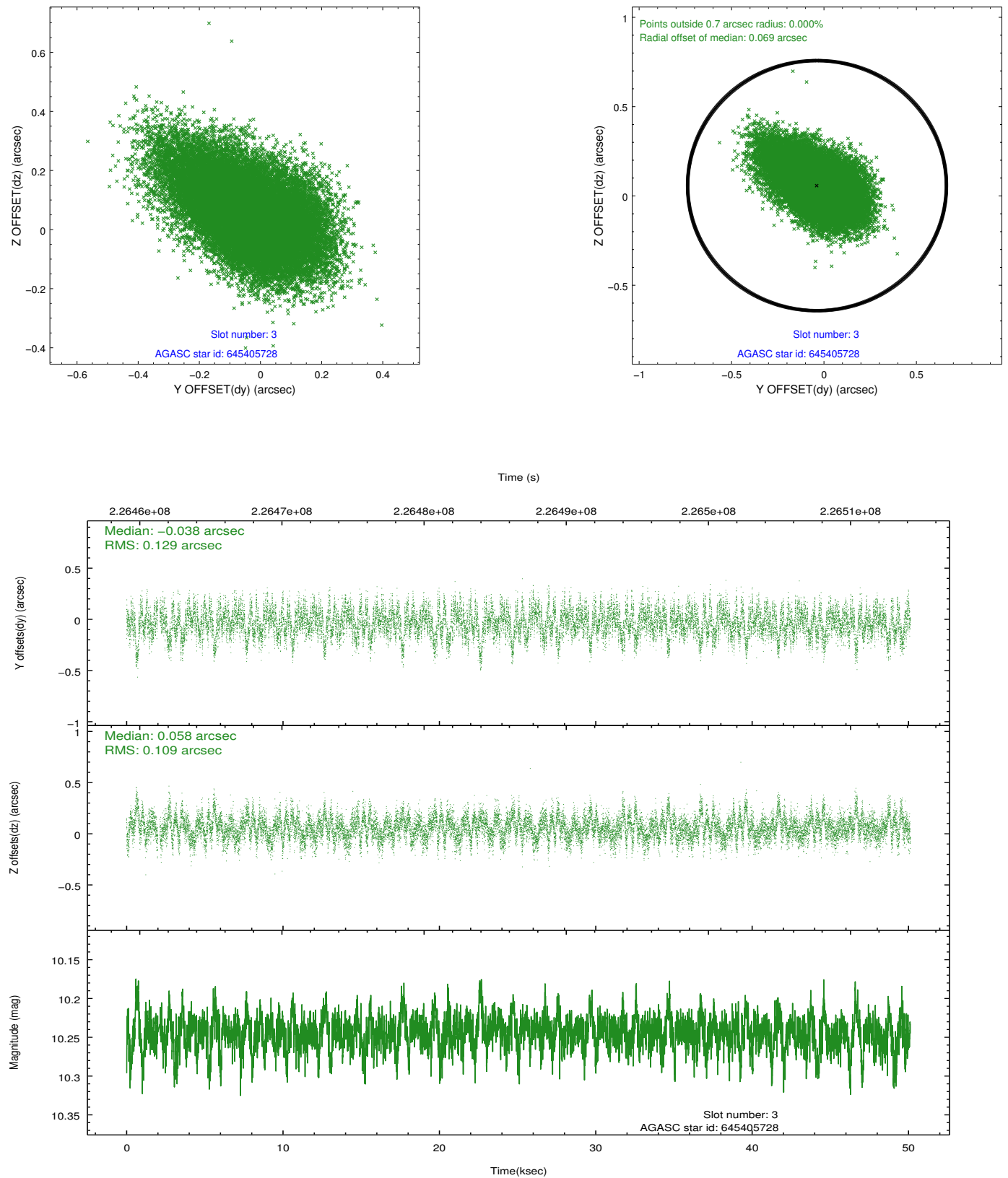
2.3 Aspect

Slot Statistics

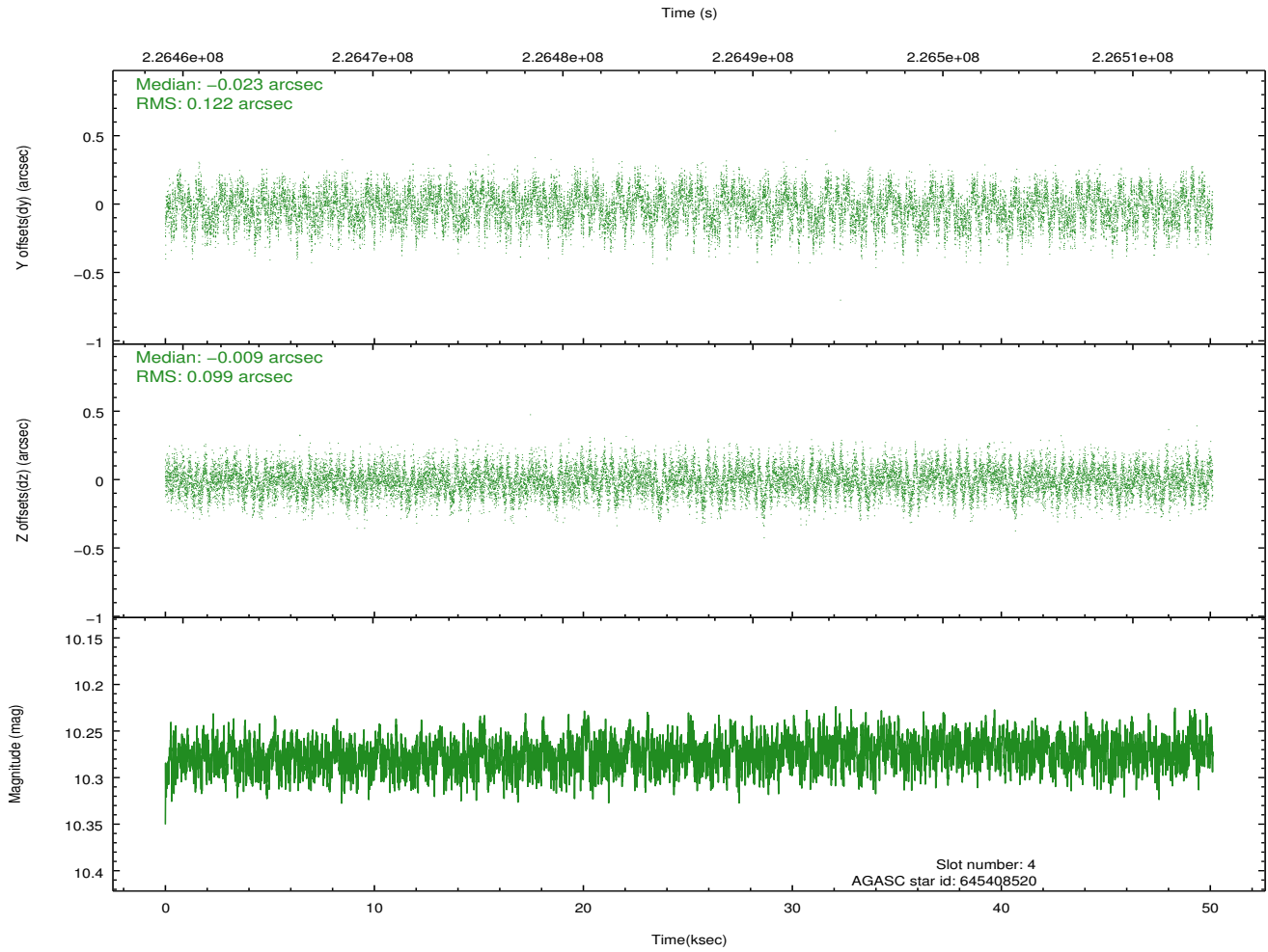
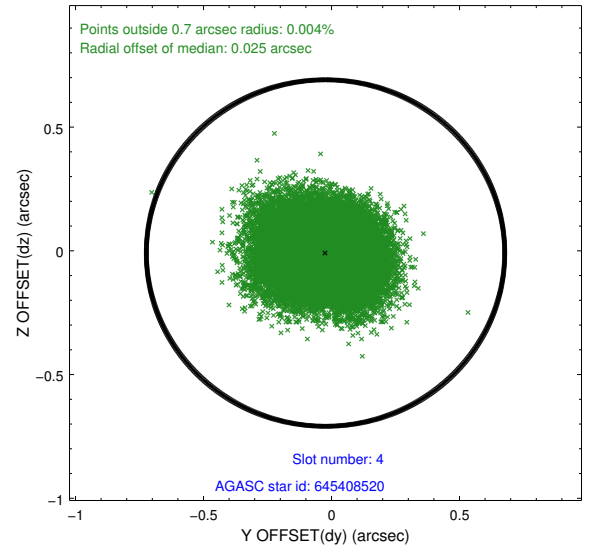
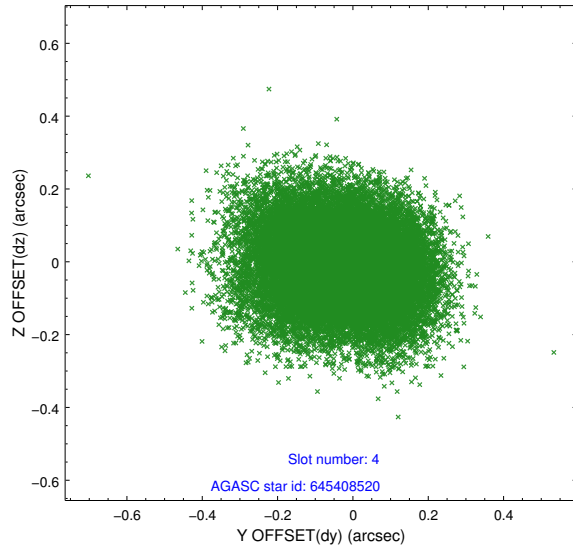
slot	status	id	mag	n_pts	med_dy	med_dz	dr1	dr2	ra	dec	mean_y	mean_z
0	FID	ACIS-S-2	7.11	12225	-0.041	-0.048	0.011	0.023	0.000000	0.000000	-758.15	-1729.43
1	FID	ACIS-S-4	7.21	12225	0.100	0.033	0.009	0.018	0.000000	0.000000	2155.30	179.13
2	FID	ACIS-S-5	7.23	12225	-0.089	0.023	0.008	0.015	0.000000	0.000000	-1811.04	172.80
3	GUIDE	645405728	10.24	24358	-0.038	0.058	0.175	0.301	166.379932	-4.876775	-1664.37	1925.98
4	GUIDE	645408520	10.28	24411	-0.023	-0.009	0.167	0.268	166.485150	-4.846117	-1285.29	2029.69
5	BAD	645793424	10.46	23444	0.129	-0.045	0.214	0.361	167.489888	-5.605287	2263.58	-771.32
6	GUIDE	645798808	9.59	24314	0.059	-0.115	0.138	0.207	166.261457	-5.333958	-2118.92	288.08
7	GUIDE	645801536	10.46	24417	-0.100	0.109	0.179	0.306	166.481888	-5.828422	-1361.88	-1505.83

2.4 Star Slots

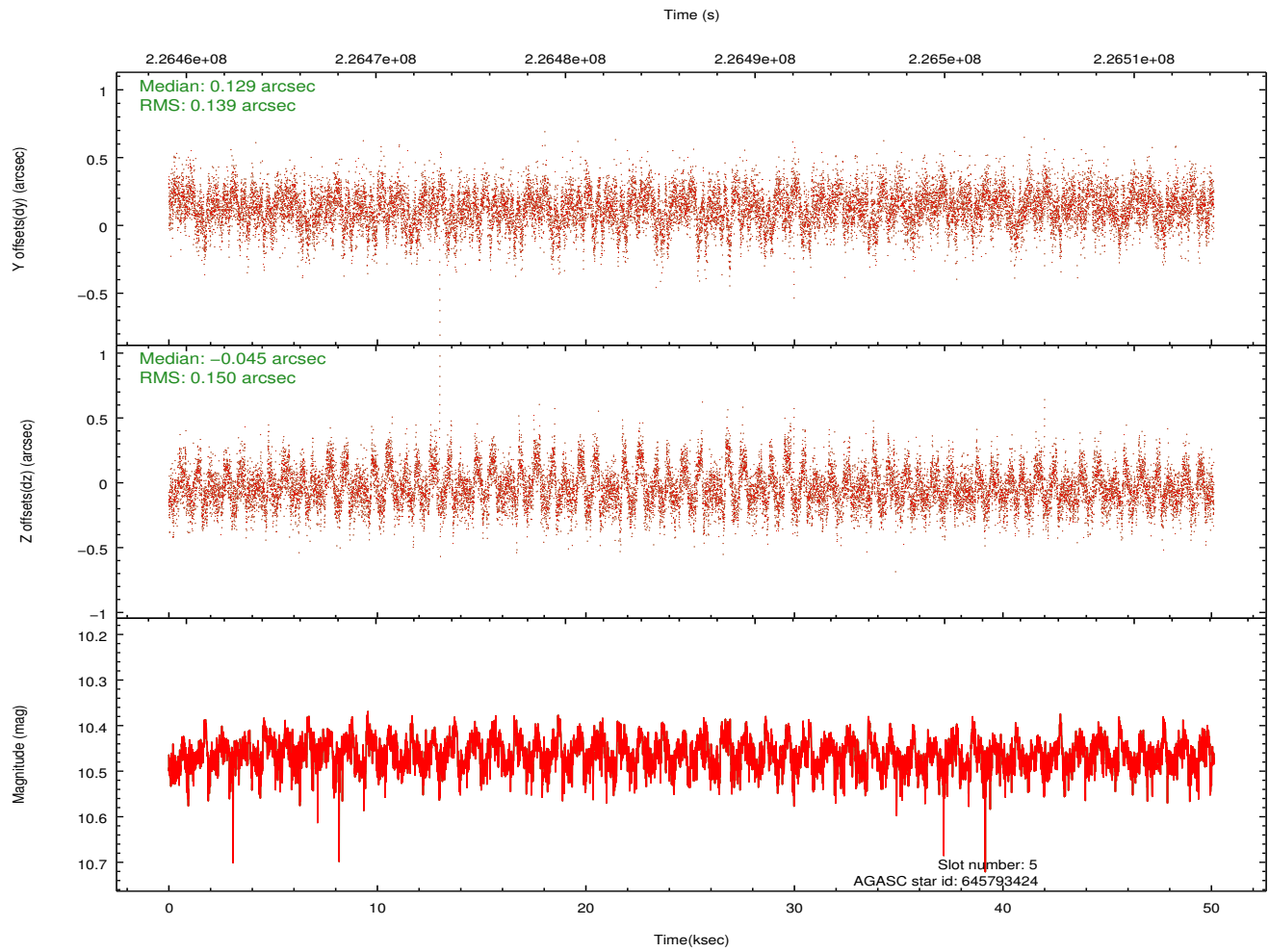
2.4.1 Slot 3



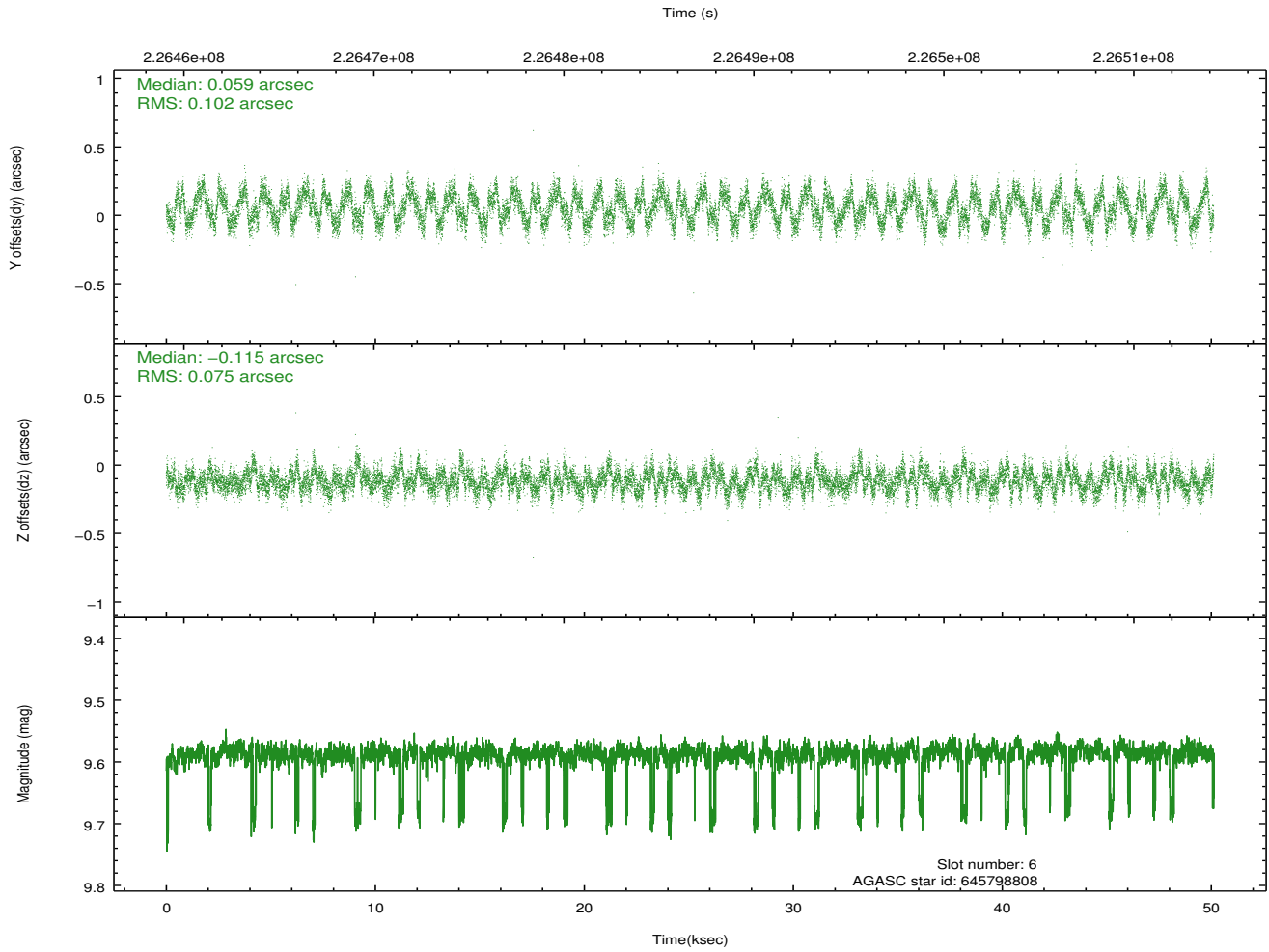
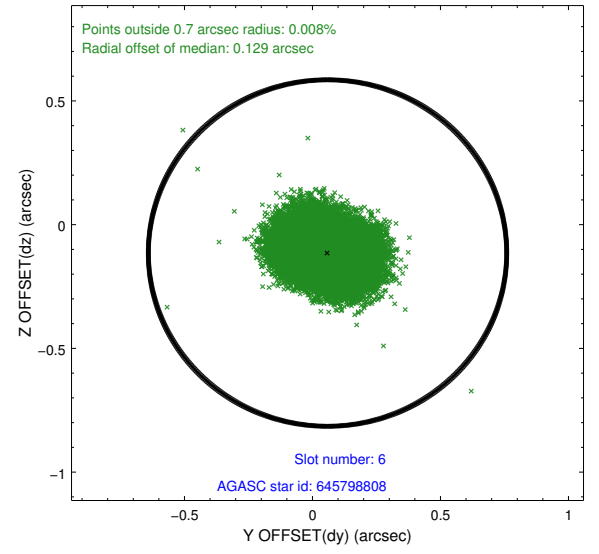
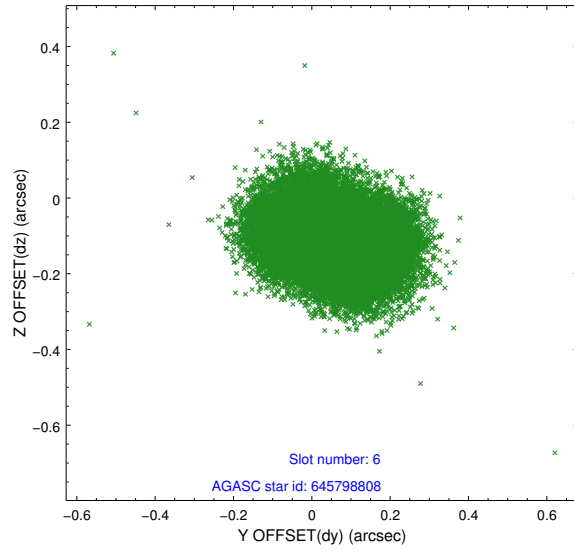
2.4.2 Slot 4



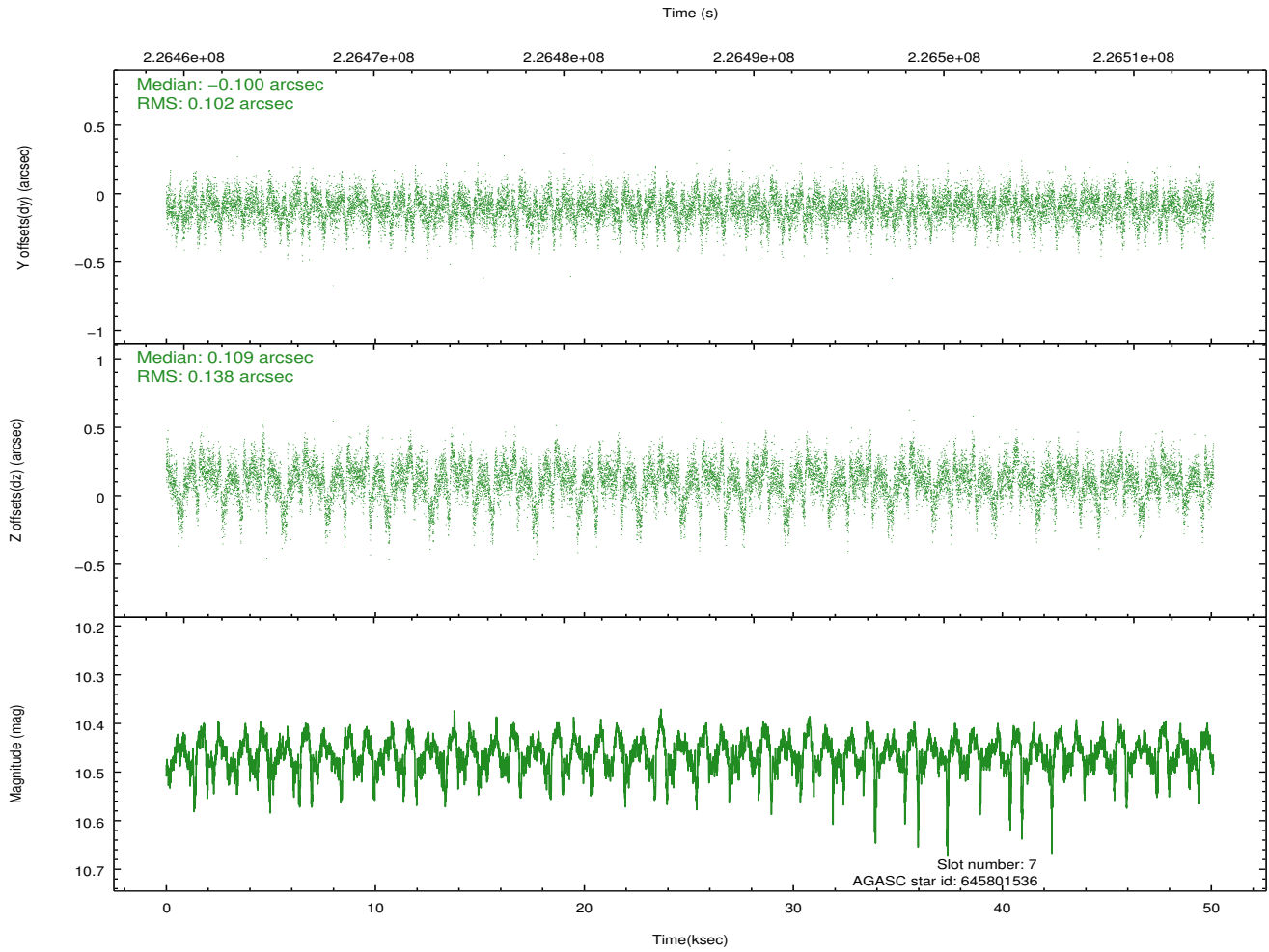
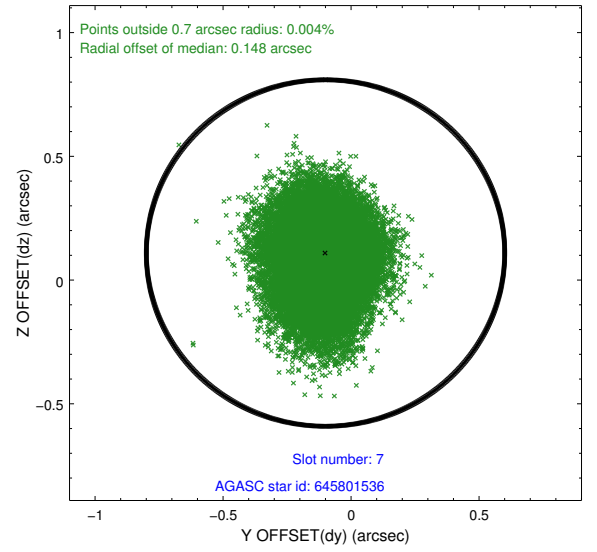
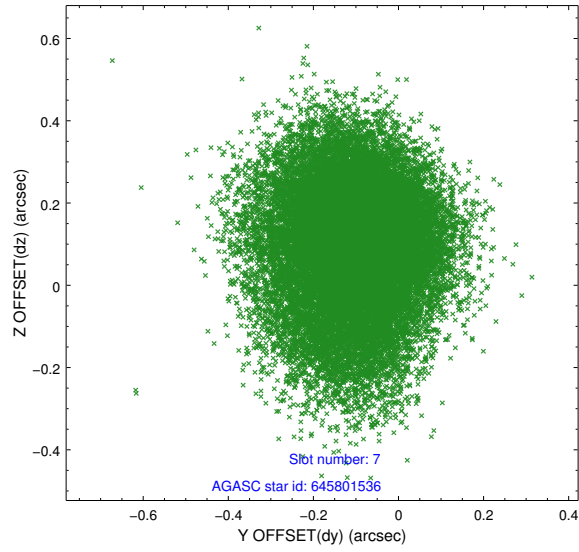
2.4.3 Slot 5



2.4.4 Slot 6

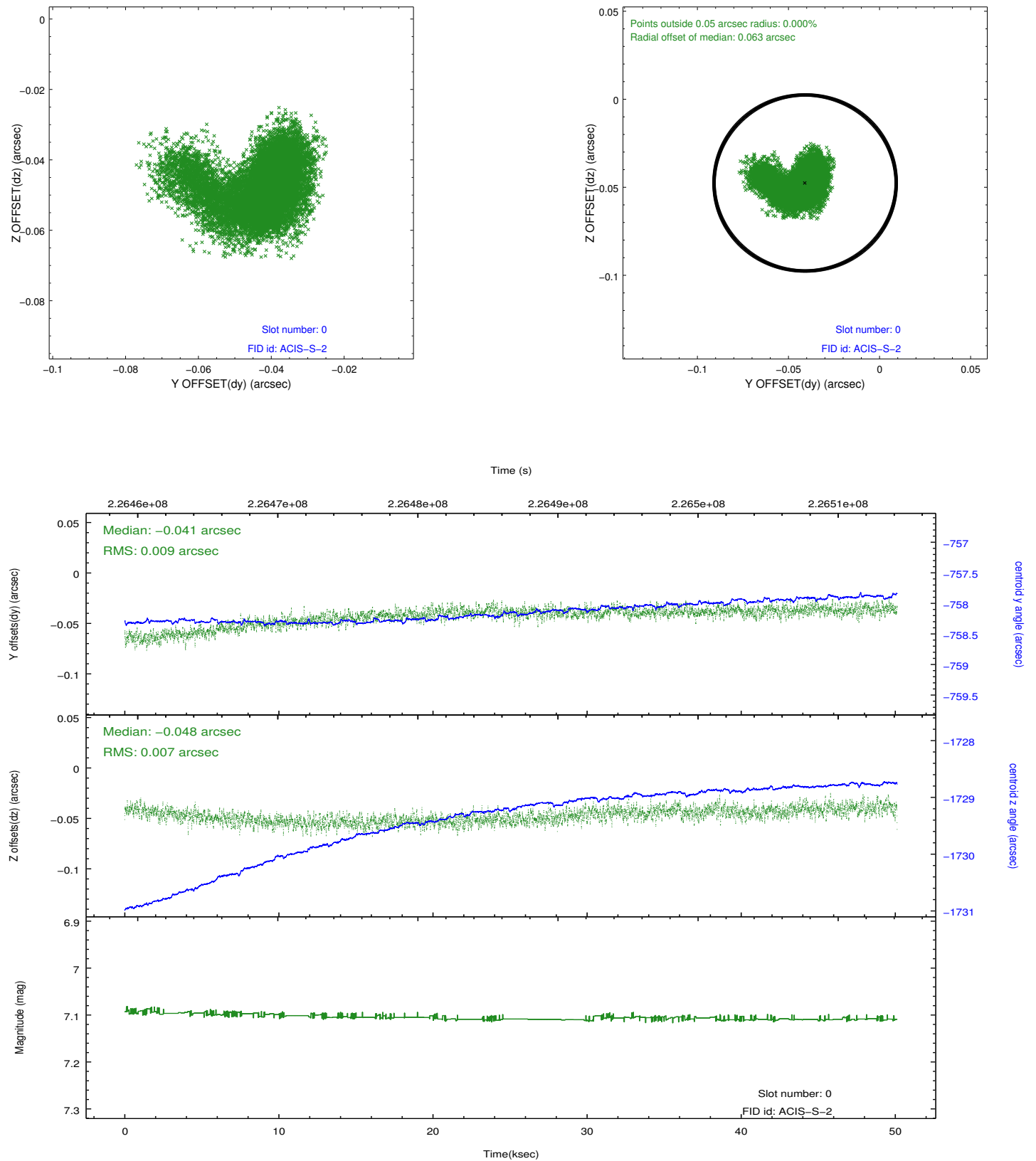


2.4.5 Slot 7

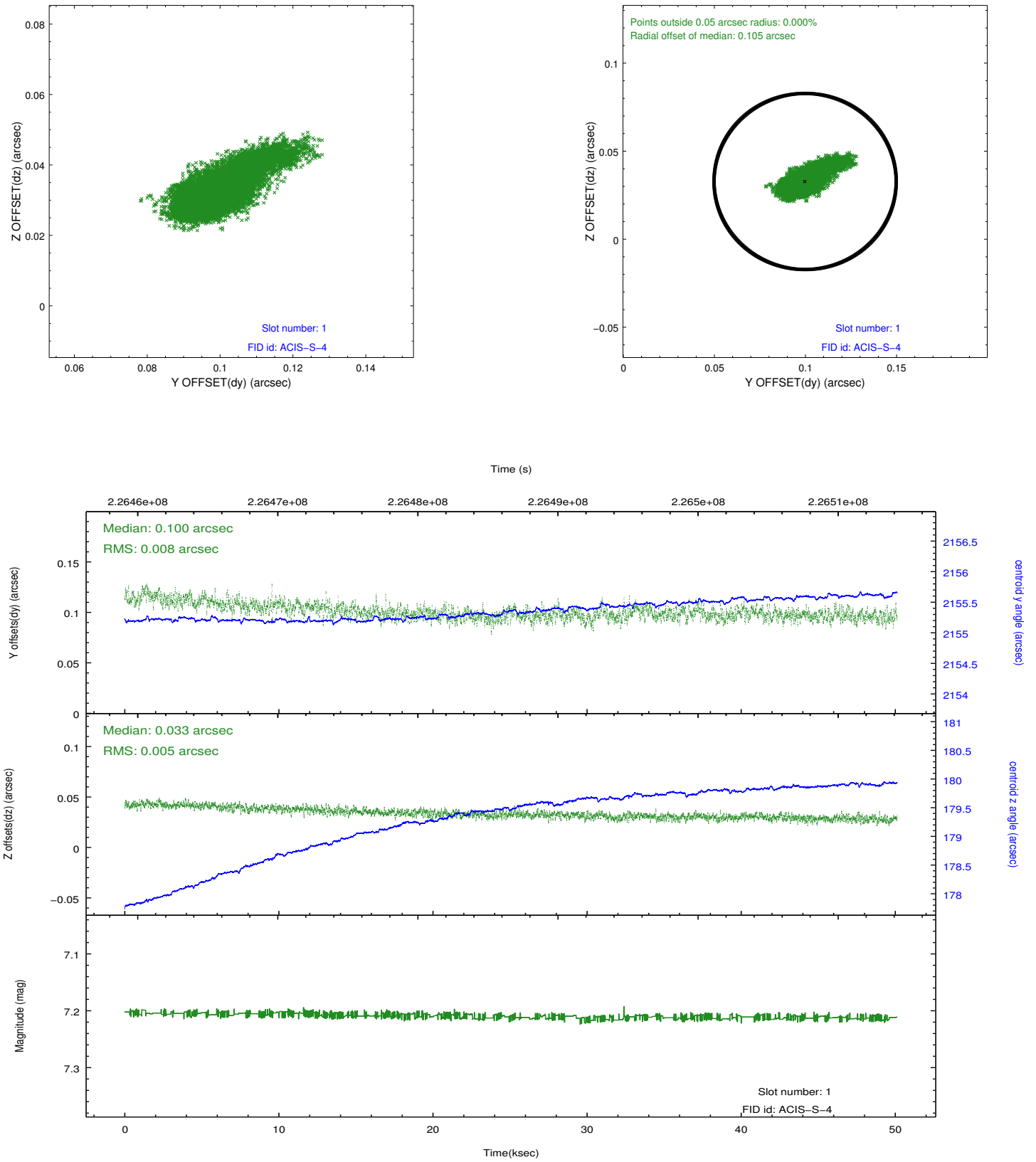


2.5 FID Slots

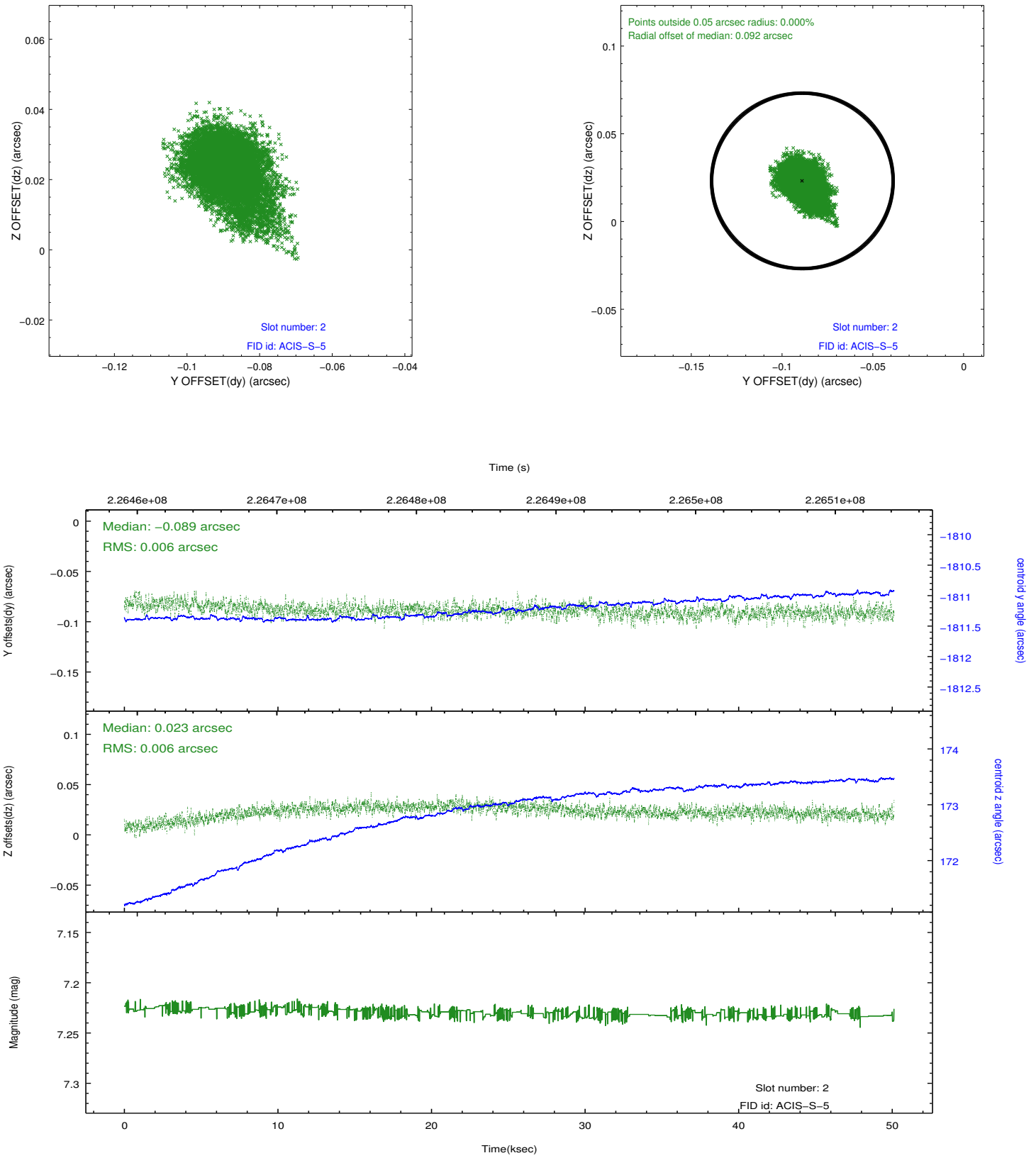
2.5.1 Slot 0



2.5.2 Slot 1



2.5.3 Slot 2



A Summary

A.1 Status

V&V Scientist	Jen Lauer
V&V Date (YYYY-MM-DD)	2013.01.11
V&V Edition	1
V&V Disposition and Status	OK
V&V Charge Time	50.12079

A.2 Comments