

V&V Reference Report

L2 ASCDS Version : 8.4.3.1

Observation 5818 - L2 Version 2
Chandra X-Ray Center

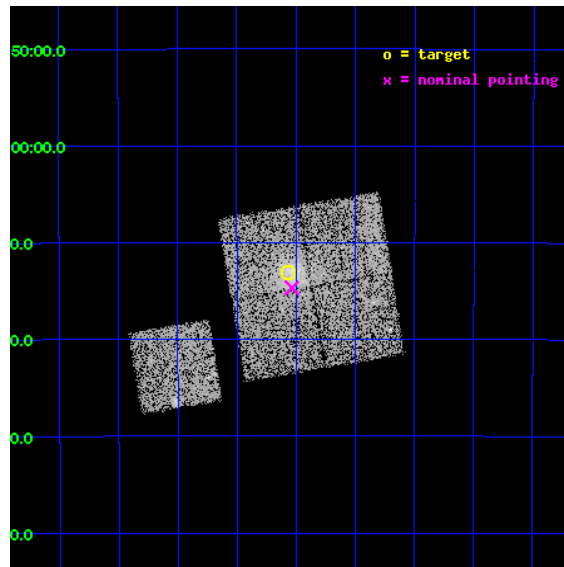
L2 Processing Date : Mar 25 2012

Contents

1	Front	2
2	OBI	3
2.1	OBI	3
2.1.1	Images	3
2.1.2	Bias	3
2.1.3	Parameters	4
2.1.4	Events	4
2.2	Compared Parameters	5
2.3	Aspect	6
2.4	Star Slots	9
2.4.1	Slot 3	9
2.4.2	Slot 4	10
2.4.3	Slot 5	11
2.4.4	Slot 6	12
2.4.5	Slot 7	13
2.5	FID Slots	14
2.5.1	Slot 0	14
2.5.2	Slot 1	15
2.5.3	Slot 2	16
A	Summary	17
A.1	Status	17
A.2	Comments	17

1 Front

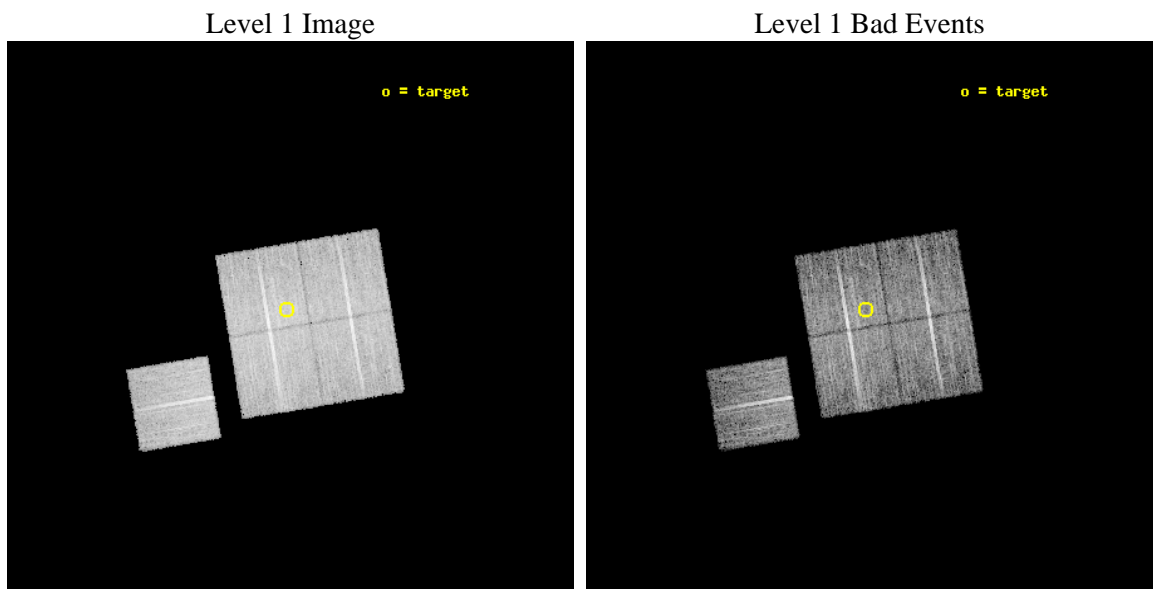
seq_num	800531	Sequence number
obs_id	5818	Observation id
title	MACS: The most massive galaxy clusters at $z>0.3$	Proposal title
observer	Dr. Harald Ebeling	Principal investigator
object	MACSJ0159.0-3412	Source name
dtcycle	0	
cycle	P	events from which exps? Prim/Second/Both
ra_targ	29.766667	Observer's specified target RA [deg]
dec_targ	-34.217806	Observer's specified target Dec [deg]
ra_nom	29.758875704668	Nominal RA [deg]
dec_nom	-34.244708420558	Nominal Dec [deg]
roll_nom	260.53281811068	Nominal Roll [deg]
revision	2	Processing version of data
ontime	9544.1560197473	Sum of GTIs [s]
livetime	9419.4545950438	Livetime [s]
ontime0	9544.0329196751	Sum of GTIs [s]
ontime1	9544.0739397705	Sum of GTIs [s]
ontime2	9547.2559699118	Sum of GTIs [s]
ontime3	9544.1560197473	Sum of GTIs [s]
ontime6	9547.1328499019	Sum of GTIs [s]
l2events	31689	Number of level 2 events



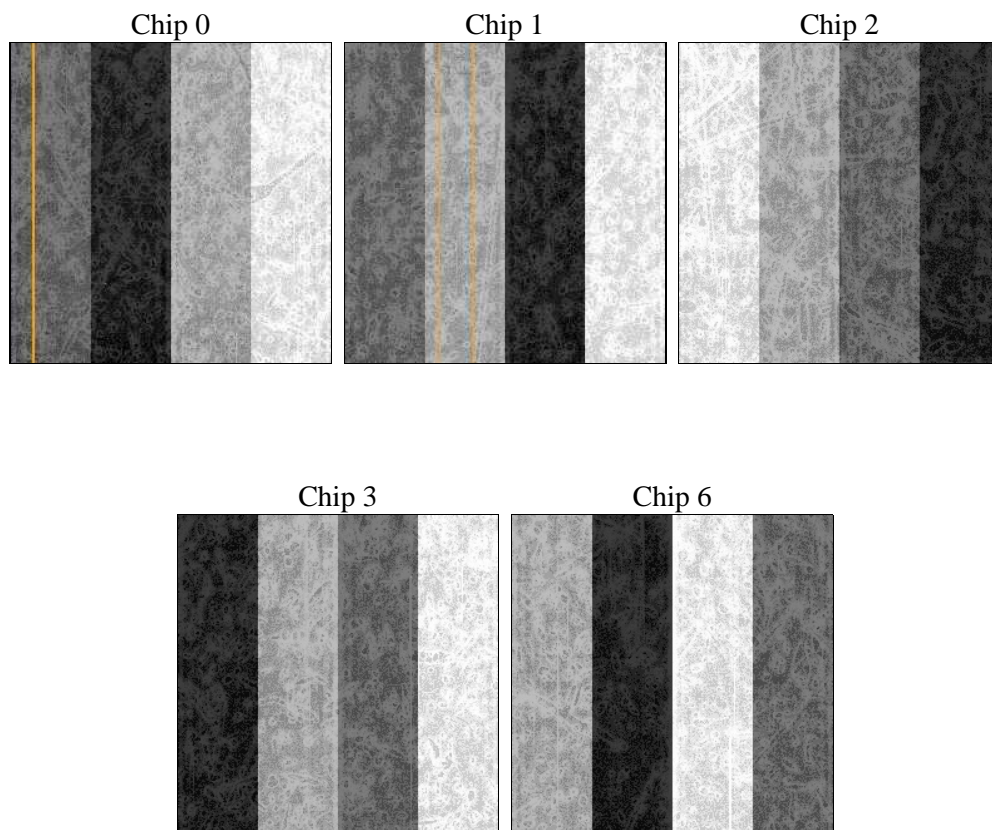
2 OBI

2.1 OBI

2.1.1 Images



2.1.2 Bias



2.1.3 Parameters

obi_num	3	Obi number	sched_exp_time	9500.000000	[s] Scheduled observation exposure time
ascdsver	8.4.3.1	Processing system revision	ontime	9544.1560197473	Sum of GTIs [s]
caldsver	4.4.8	 	ontime0	9544.0329196751	Sum of GTIs [s]
date	2012-03-25T17:49:24	Date and time of file creation	ontime1	9544.0739397705	Sum of GTIs [s]
revision	2	Processing version of data	ontime2	9547.2559699118	Sum of GTIs [s]
			ontime3	9544.1560197473	Sum of GTIs [s]
			ontime6	9547.1328499019	Sum of GTIs [s]
			l1events	344136	Number of level 1 events

2.1.4 Events

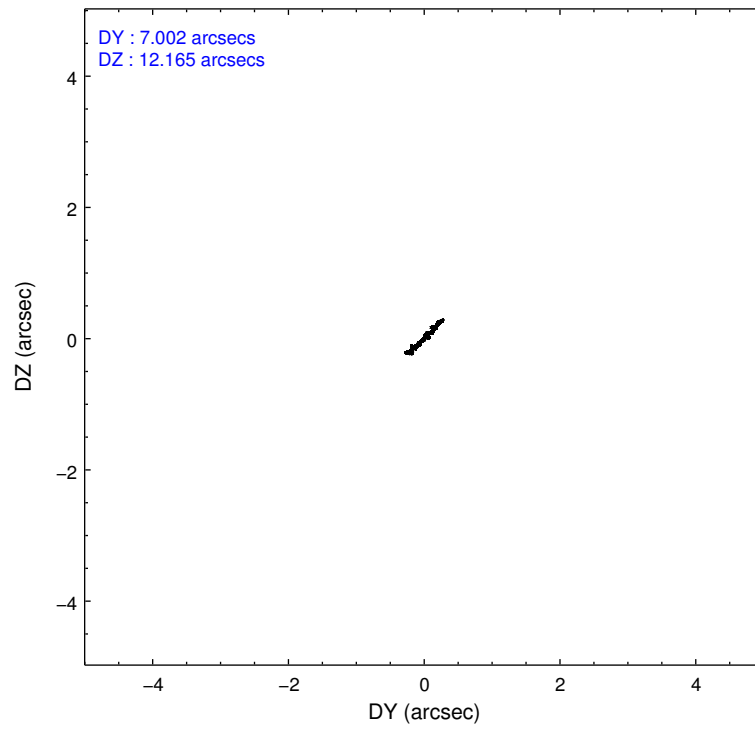
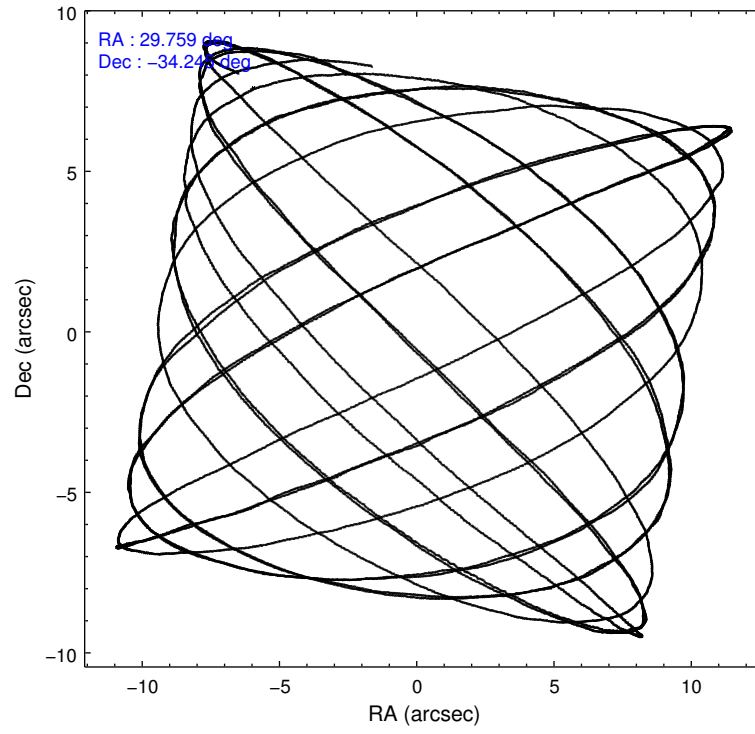
	ccd 0	ccd 1	ccd 2	ccd 3	ccd 6
level 1 events	65656	64658	73087	72753	67982
rejected events	58704	56838	66374	63649	60960
rejected %	89%	87%	90%	87%	89%

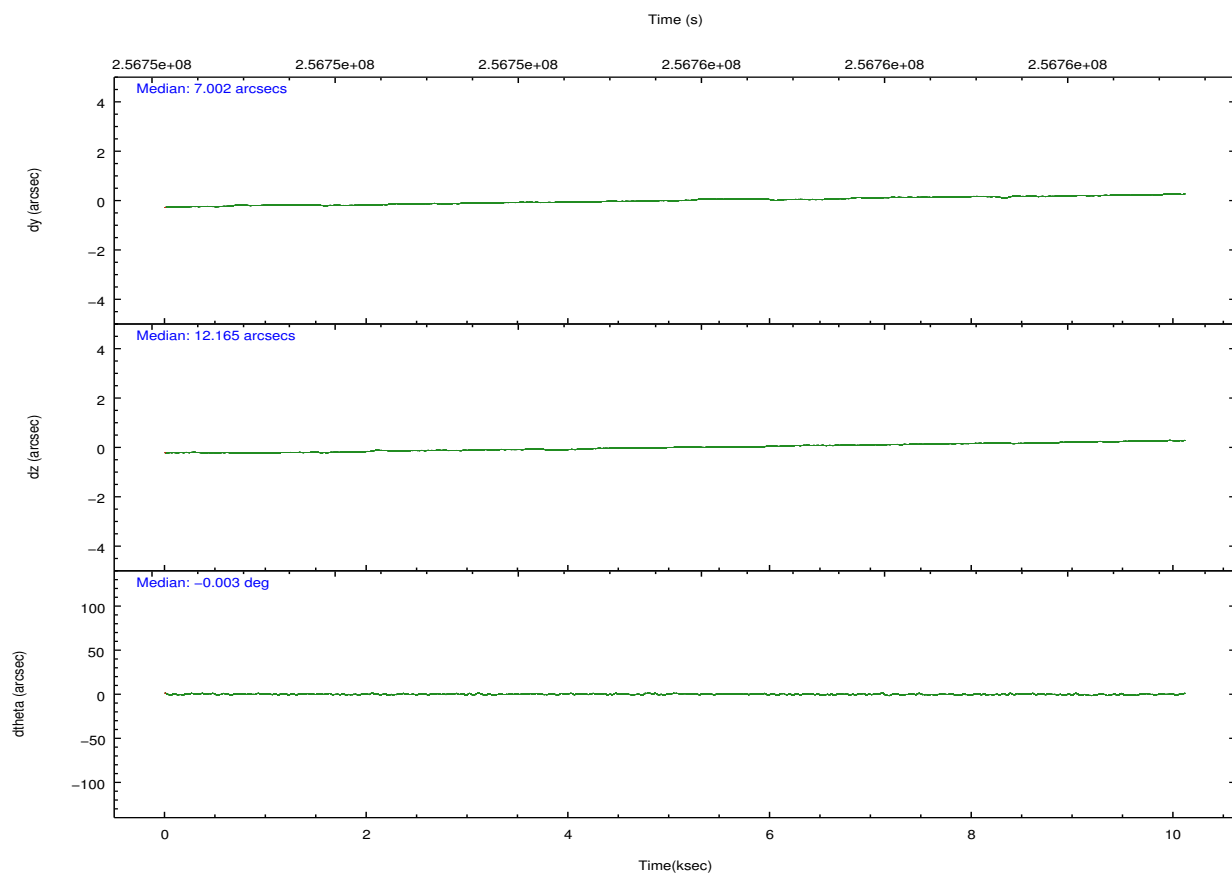
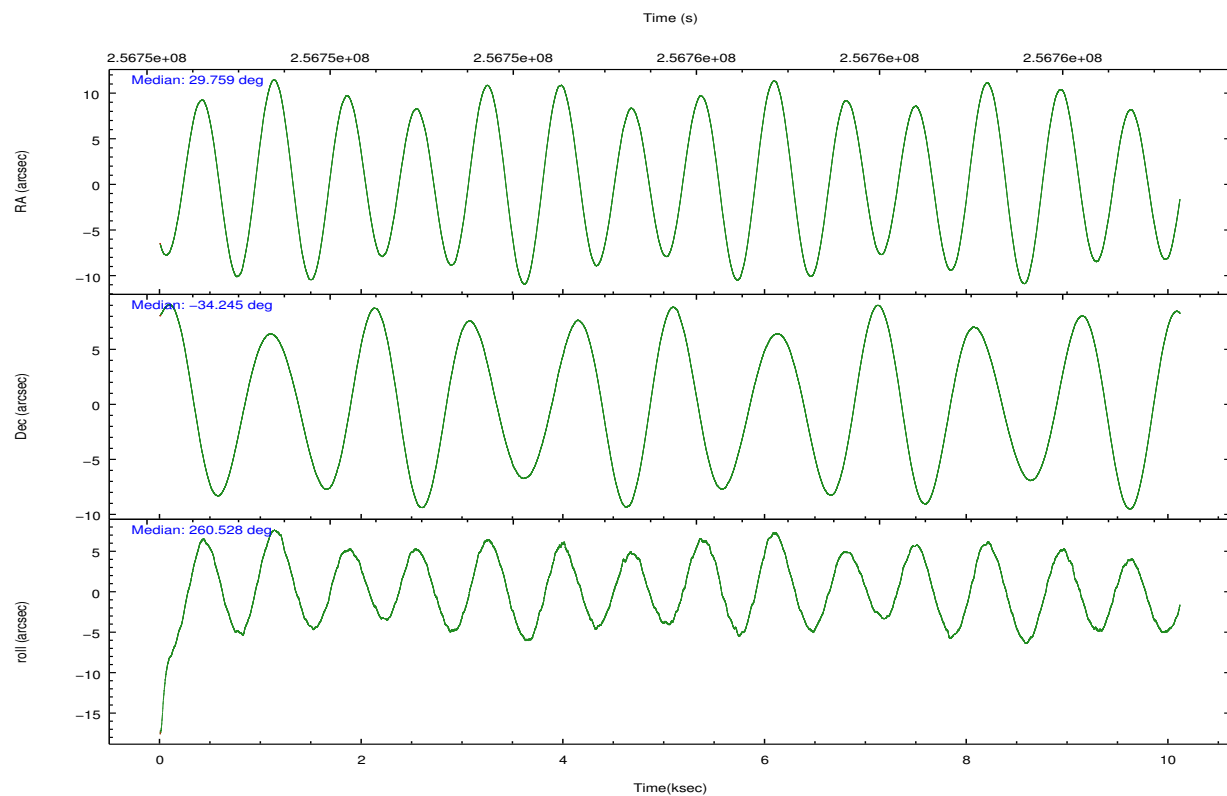
	ccd 0	ccd 1	ccd 2	ccd 3	ccd 6
grade 0 events	2458	2926	2486	4380	2555
	3%	4%	3%	6%	3%
grade 1 events	28	39	38	42	35
	0%	0%	0%	0%	0%
grade 2 events	1621	1667	1597	1704	1439
	2%	2%	2%	2%	2%
grade 3 events	785	831	733	806	792
	1%	1%	1%	1%	1%
grade 4 events	758	839	757	825	762
	1%	1%	1%	1%	1%
grade 5 events	2314	2764	2232	2775	2716
	3%	4%	3%	3%	3%
grade 6 events	1332	1560	1144	1393	1477
	2%	2%	1%	1%	2%
grade 7 events	56360	54032	64100	60828	58206
	85%	83%	87%	83%	85%

2.2 Compared Parameters

Parameter	Planned	Actual	Parameter	Planned	Actual
Instrument	ACIS	ACIS	Obspar format version number	7	7
Detector	ACIS-01236	ACIS-01236	Obspar file type	PREDICTED	ACTUAL
Grating	NONE	NONE	Obspar update status	NONE	UPDATED
Data mode	VFAINT	VFAINT	Number of optional ACIS chips dropped	0	0
Observation mode	POINTING	POINTING	On-chip summing requested	N	N
[deg] Pointing RA	29.747182	29.75887570466775	Subarray requested	NONE	NONE
[deg] Pointing Dec	-34.219114	-34.24470842055779	Alternating exposures requested	N	N
[deg] Pointing Roll	260.317567	260.5328181106756	[s] Primary exposure time	0.000000	3.1
[mm] SIM focus pos	-0.782348	-0.7809083437167272			
[mm] SIM defocus	0	0.001439871863259334			
[mm] SIM translation stage pos	-229.442463	-229.4438428438578			
[mm] SIM translation stage offset	-4.15	-4.148610159071865			
[s] Observation start time (MET)	256751276.184000	256750135.87739			
Observation start date	2006-02-19T15:46:51	2006-02-19T15:28:55			
[s] Observation end time (MET)	256760776.184000	256762210.89045			
Observation end date	2006-02-19T18:25:11	2006-02-19T18:50:10			
Read mode	TIMED	TIMED			

2.3 Aspect



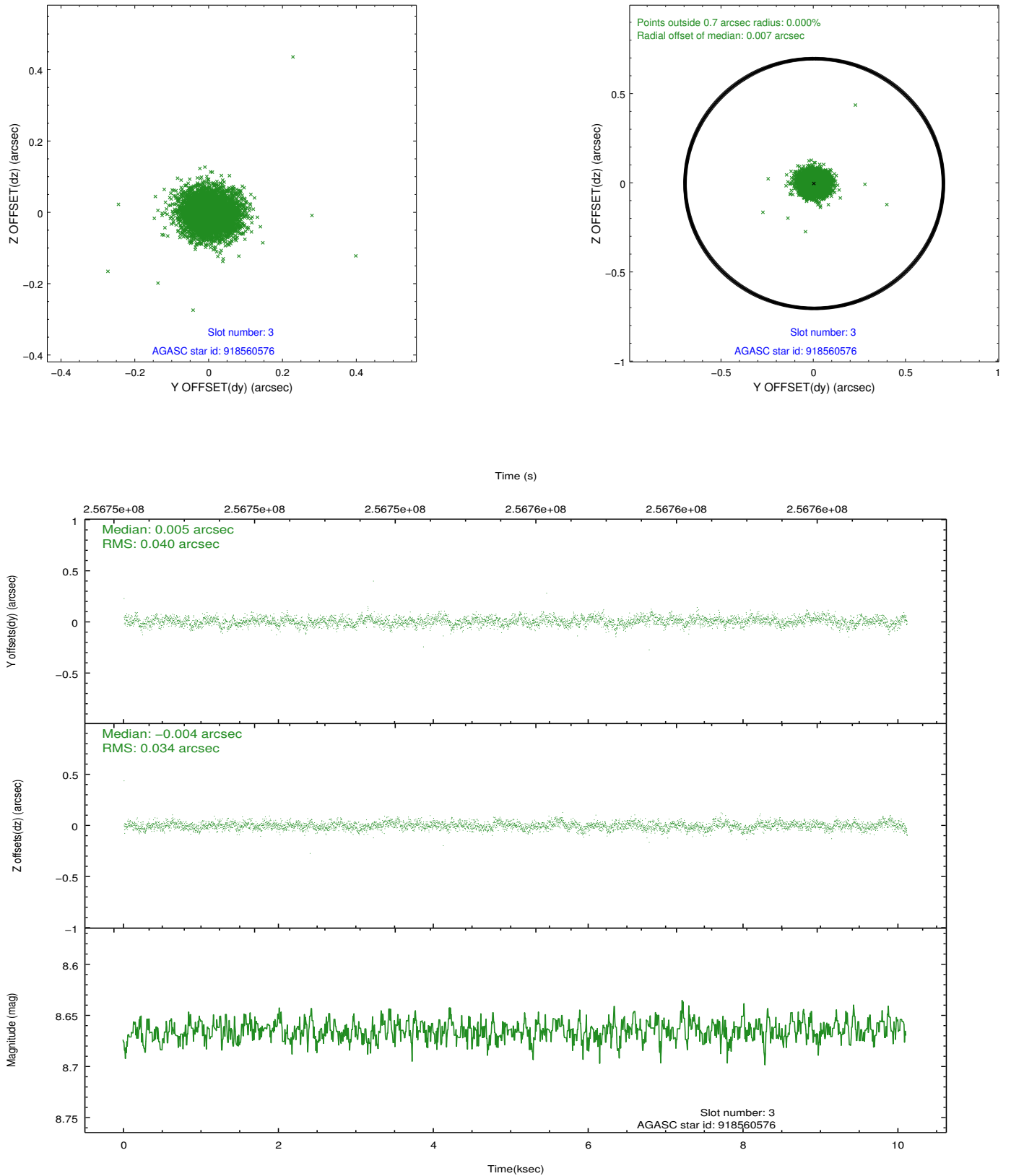


Slot Statistics

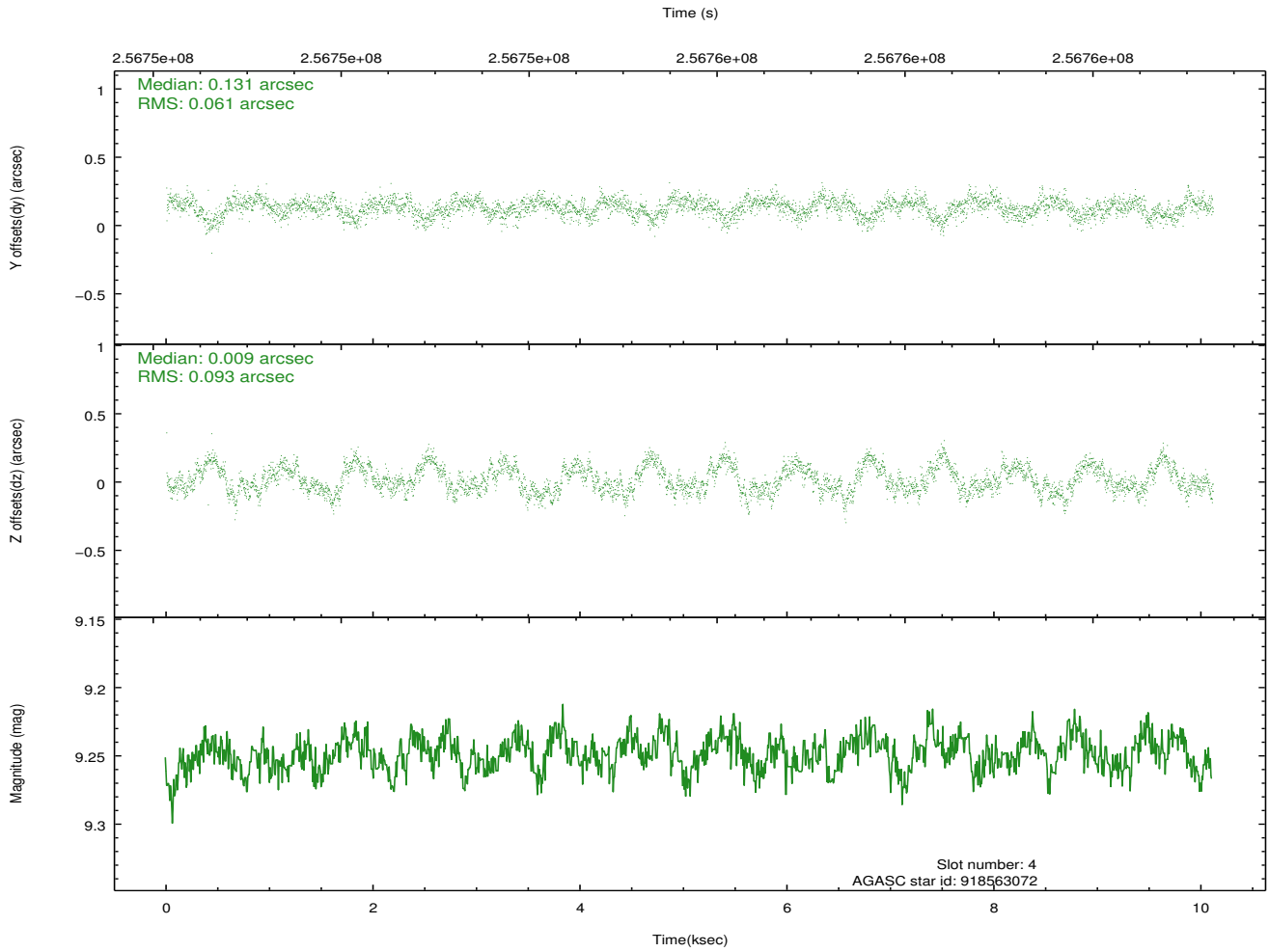
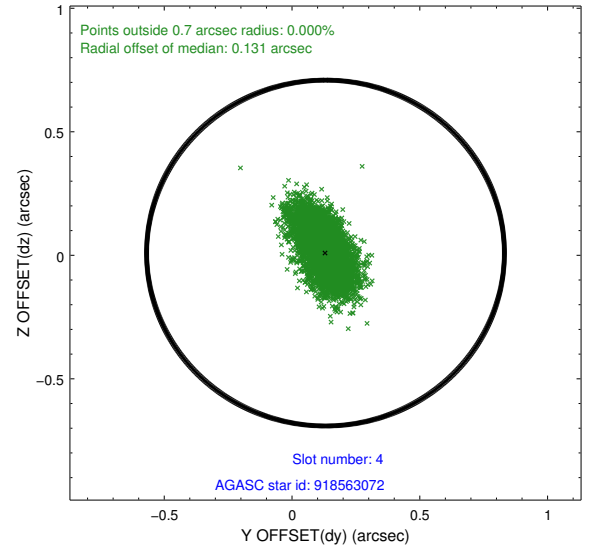
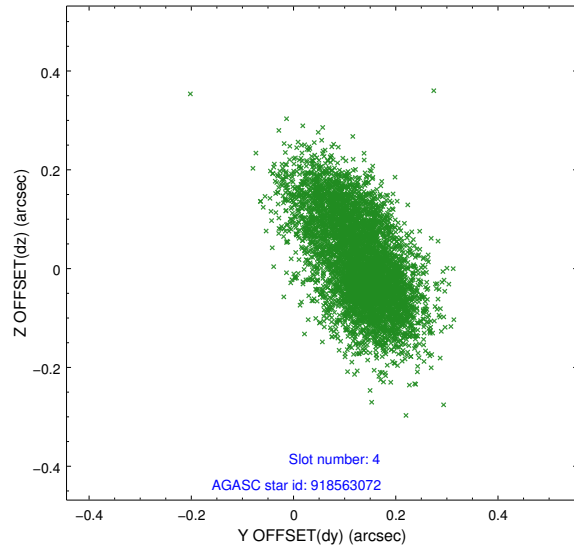
slot	status	id	mag	n_pts	med_dy	med_dz	dr1	dr2	ra	dec	mean_y	mean_z
0	FID	ACIS-I-1	7.24	2467	0.016	-0.099	0.013	0.021	0.000000	0.000000	932.64	-920.89
1	FID	ACIS-I-4	7.15	2467	0.069	0.085	0.013	0.020	0.000000	0.000000	2152.75	979.35
2	FID	ACIS-I-5	7.22	2467	-0.183	0.085	0.010	0.015	0.000000	0.000000	-1814.92	977.20
3	GUIDE	918560576	8.66	4931	0.005	-0.004	0.054	0.090	29.920396	-34.759217	1831.40	832.66
4	GUIDE	918563072	9.25	4931	0.131	0.009	0.119	0.195	29.914104	-34.440152	702.24	622.99
5	GUIDE	918564712	8.99	4931	-0.094	0.080	0.082	0.129	30.196054	-34.420805	494.83	1437.17
6	GUIDE	918566288	8.03	4931	0.077	-0.138	0.077	0.127	29.263904	-33.939814	-744.33	-1590.97
7	GUIDE	918306224	7.39	4933	-0.114	0.046	0.063	0.096	29.092482	-33.731213	-1395.37	-2226.51

2.4 Star Slots

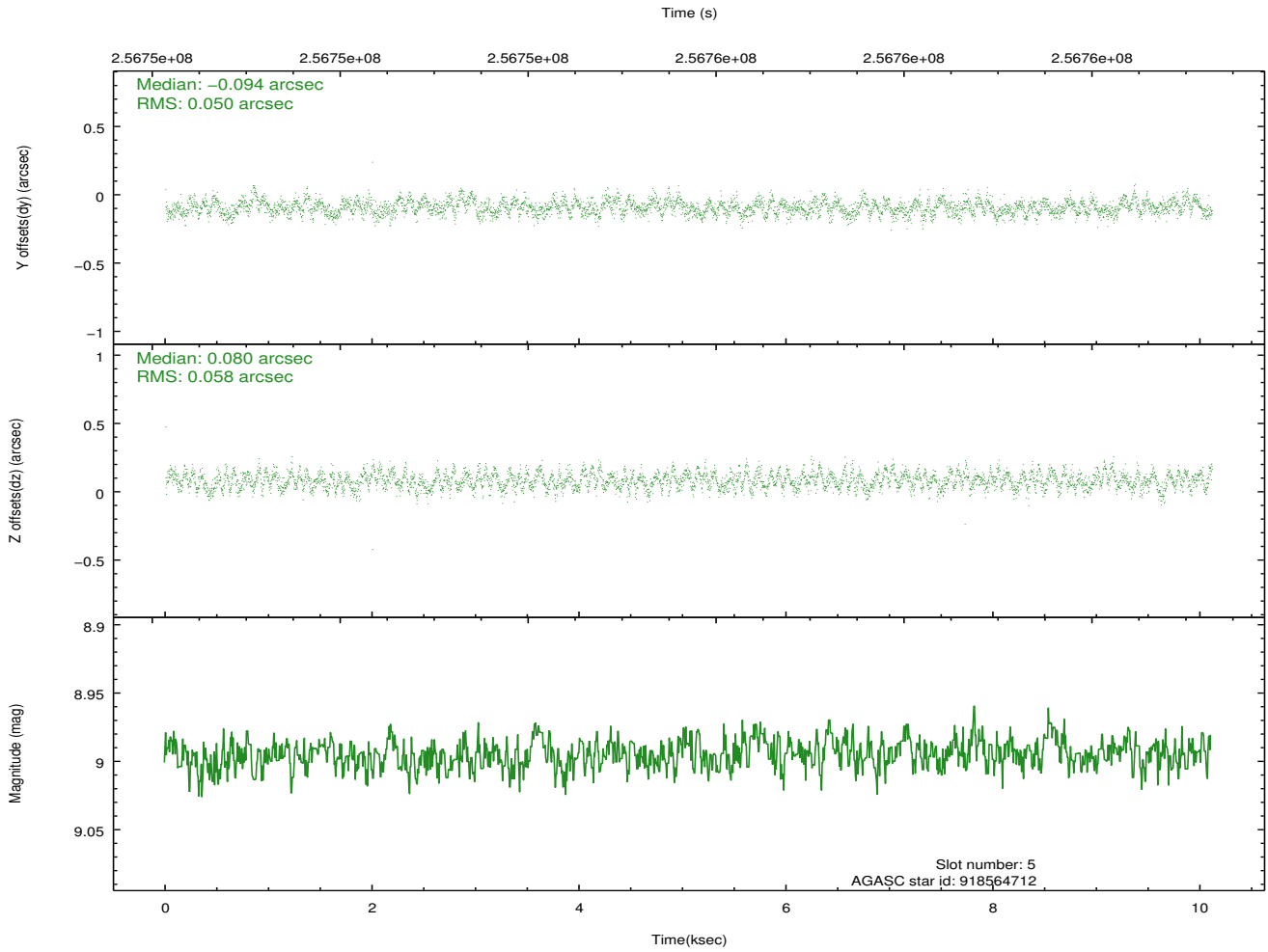
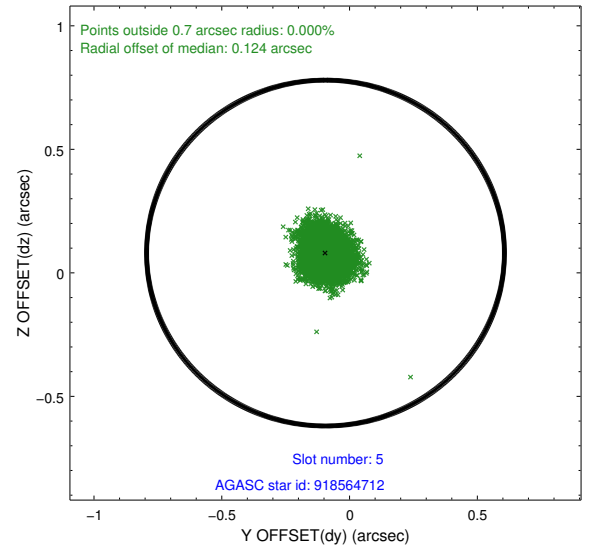
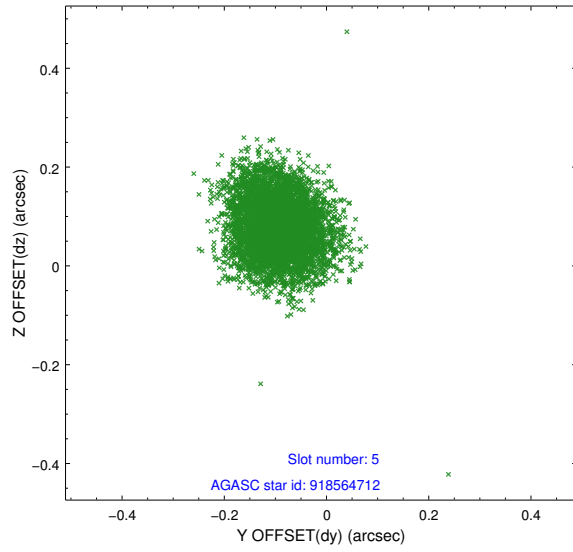
2.4.1 Slot 3



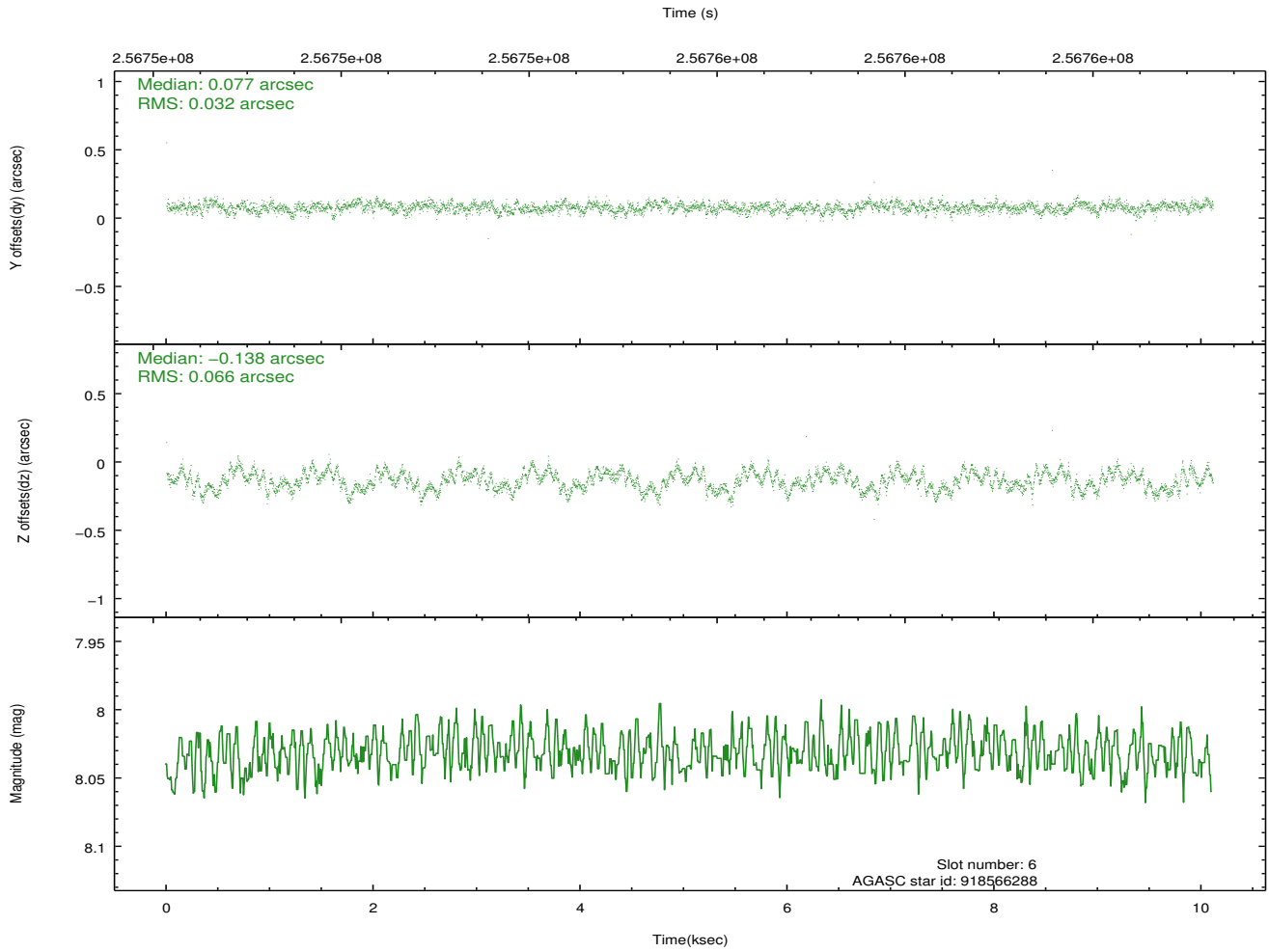
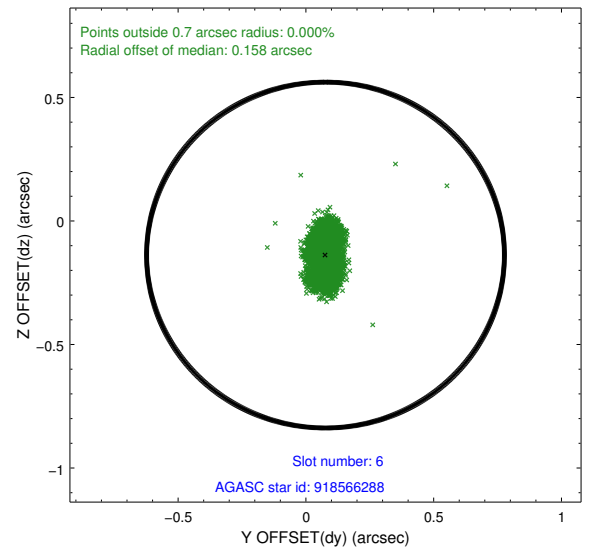
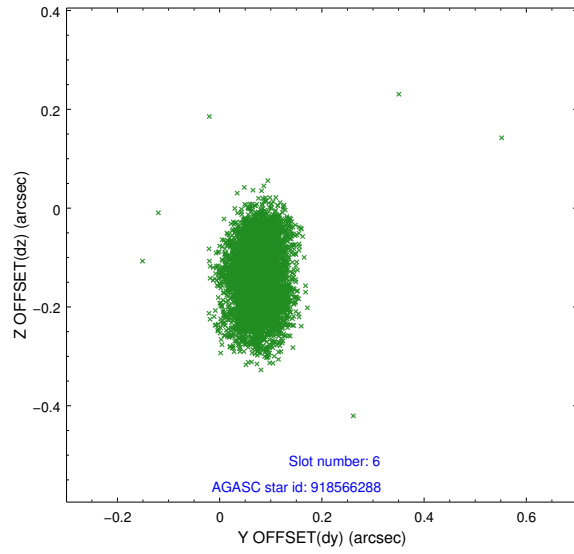
2.4.2 Slot 4



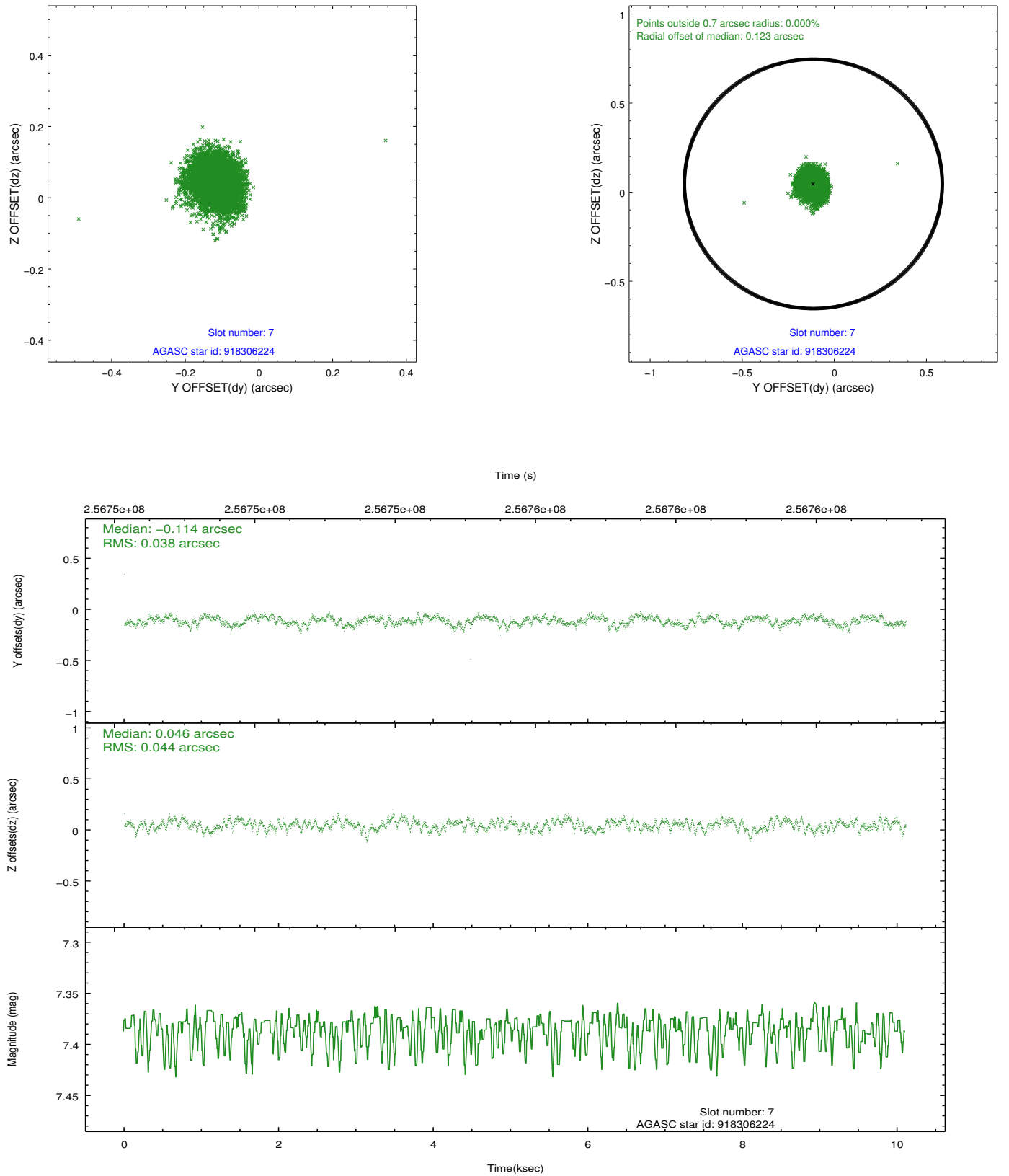
2.4.3 Slot 5



2.4.4 Slot 6

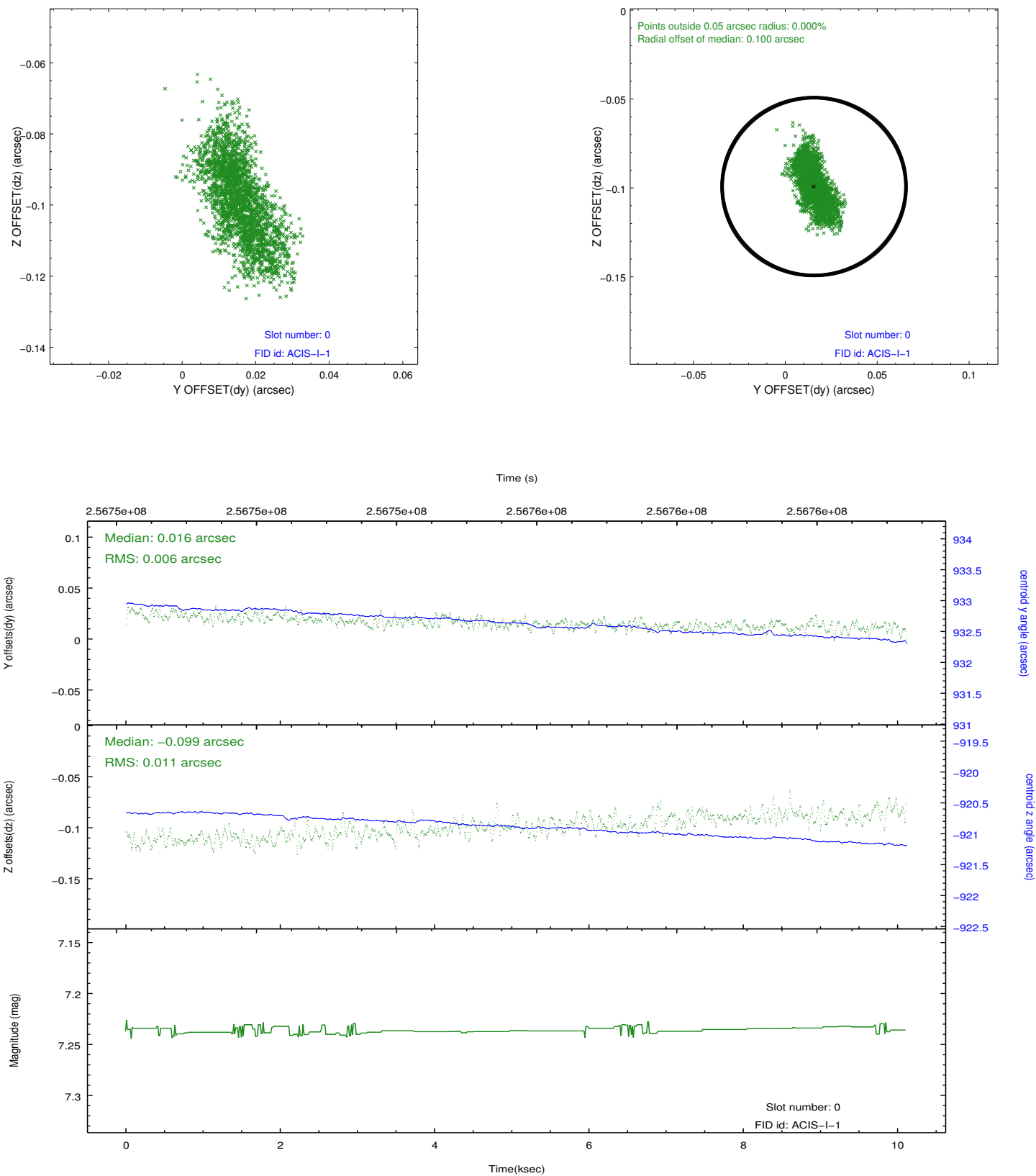


2.4.5 Slot 7

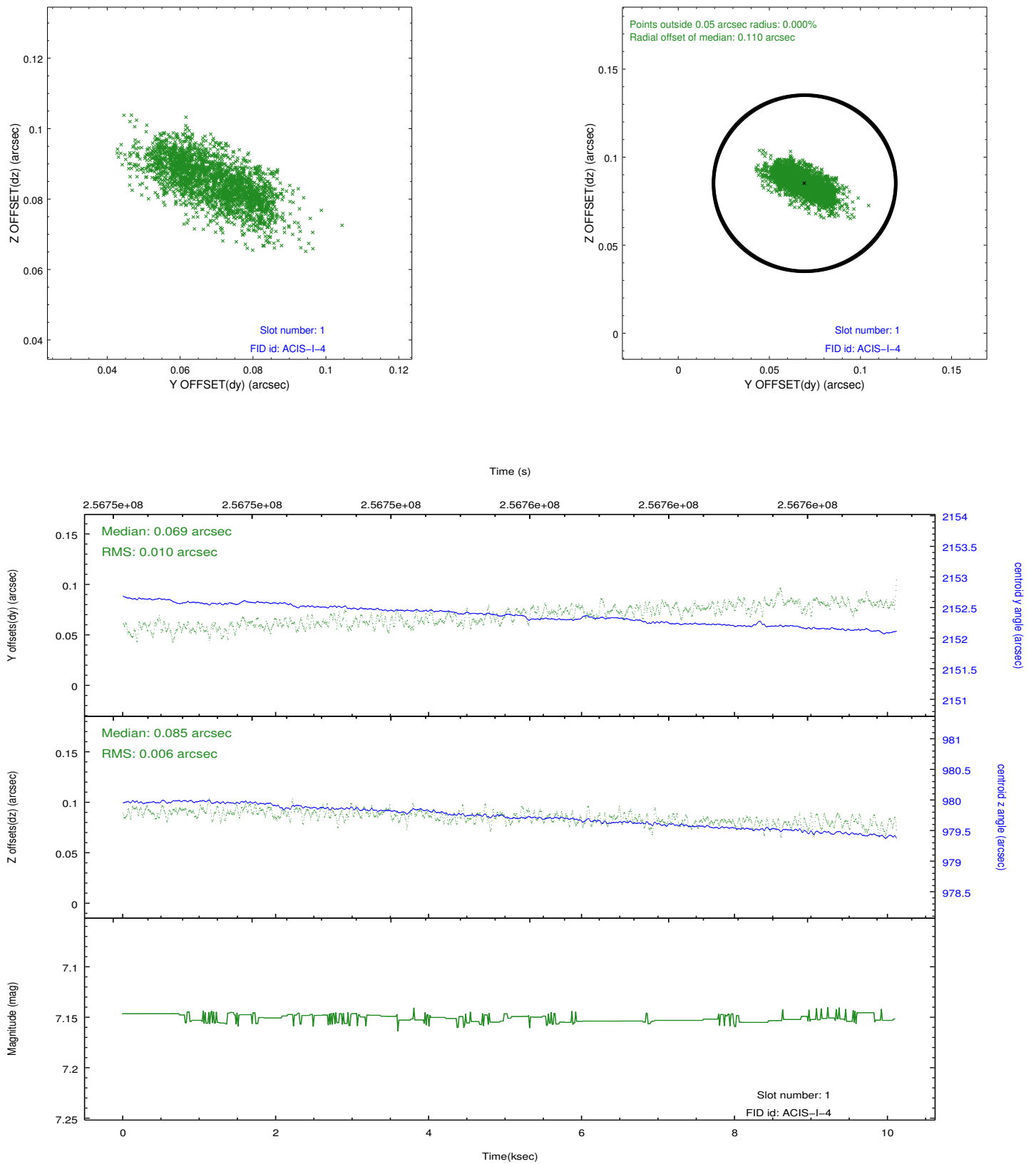


2.5 FID Slots

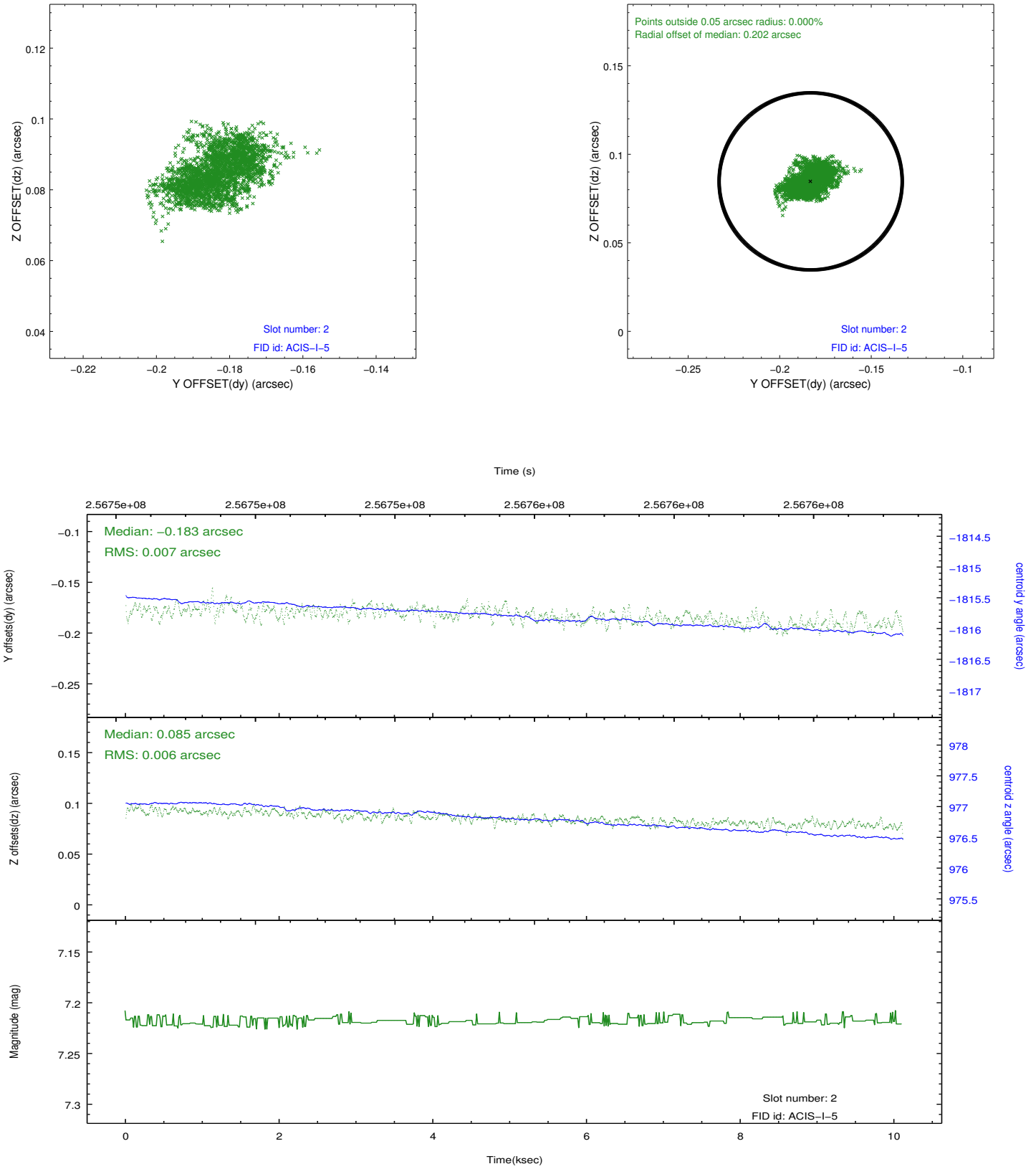
2.5.1 Slot 0



2.5.2 Slot 1



2.5.3 Slot 2



A Summary

A.1 Status

V&V Scientist	Beth Sundheim
V&V Date (YYYY-MM-DD)	2012.03.27
V&V Edition	1
V&V Disposition and Status	OK
V&V Charge Time	9.54485899

A.2 Comments