

V&V Reference Report

L2 ASCDS Version : 7.6.7.1

Observation 5817 - L2 Version 002
Chandra X-Ray Center

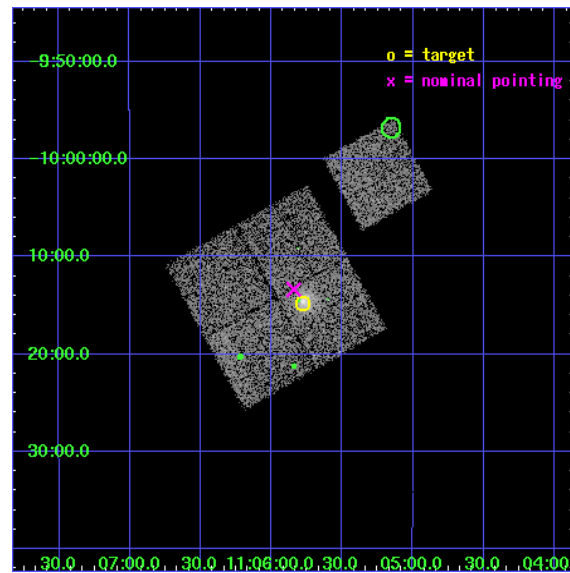
L2 Processing Date : Mar 16 2006

Contents

1	Front	2
2	OBI	3
2.1	OBI	3
2.1.1	Images	3
2.1.2	Bias	3
2.1.3	Parameters	4
2.1.4	Events	4
2.2	Compared Parameters	5
2.3	Aspect	6
2.4	Star Slots	9
2.4.1	Slot 3	9
2.4.2	Slot 4	10
2.4.3	Slot 5	11
2.4.4	Slot 6	12
2.4.5	Slot 7	13
2.5	FID Slots	14
2.5.1	Slot 0	14
2.5.2	Slot 1	15
2.5.3	Slot 2	16
3	Point Sources	17
A	Summary	18
A.1	Status	18
A.2	Comments	18

1 Front

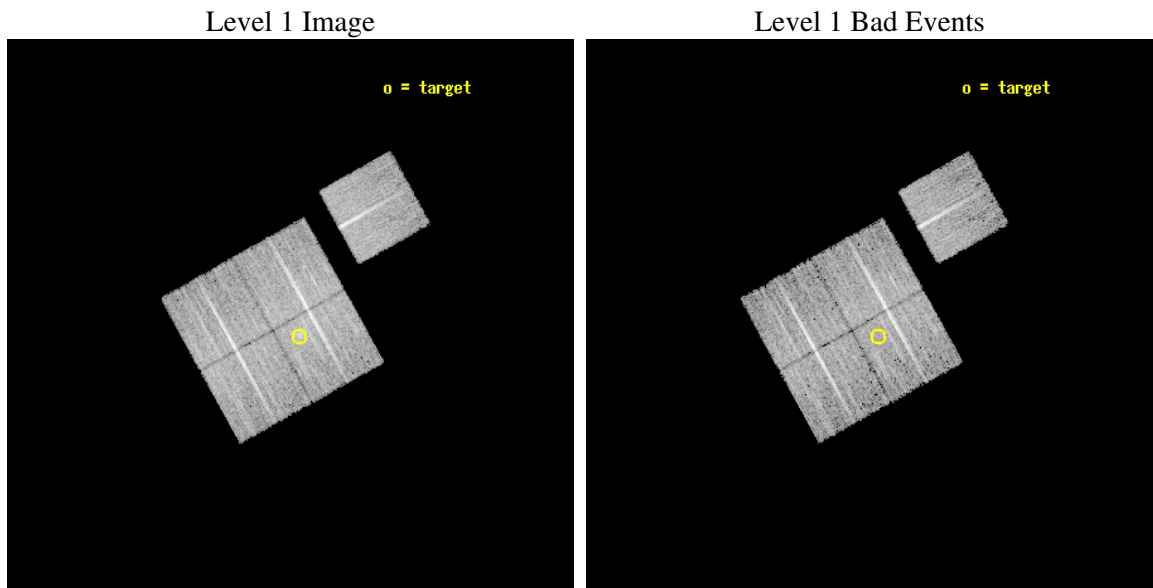
seq_num	800530
obs_id	5817
title	MACS: The most massive galaxy clusters at $z>0.3$
observer	Dr. Harald Ebeling
object	MACSJ1105.7-1014
dtcycle	0
cycle	P
ra_targ	166.445
dec_targ	-10.246167
ra_nom	166.46032992248
dec_nom	-10.222962145007
roll_nom	60.914606093295
revision	2
ontime	10459.399979889
livetime	10322.740219054
ontime0	10456.258989722
ontime1	10459.399979889
ontime2	10459.399979889
ontime3	10459.399979889
ontime6	10449.977099001
l2events	28183



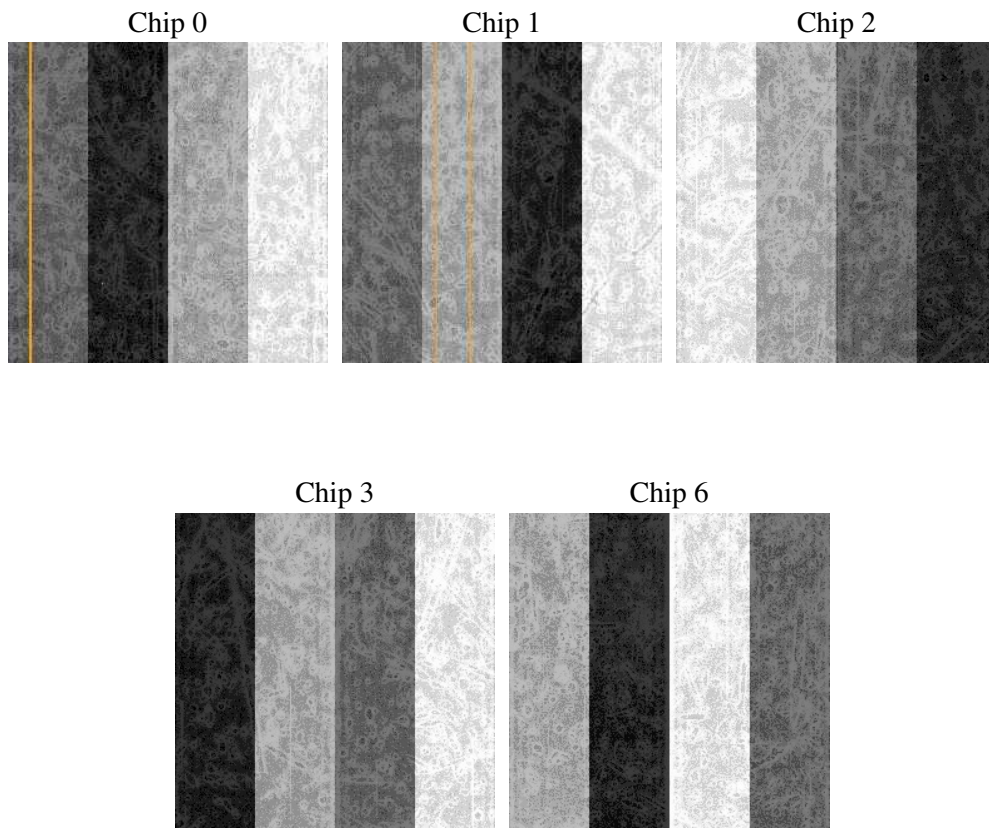
2 OBI

2.1 OBI

2.1.1 Images



2.1.2 Bias



2.1.3 Parameters

obi_num	0
ascdsver	7.6.7.1
caldsver	3.2.1
date	2006-03-16T17:32:42
revision	2

sched_exp_time	10407.119000
ontime	10462.686071754
ontime0	10459.545081586
ontime1	10462.686071754
ontime2	10462.686071754
ontime3	10462.686071754
ontime6	10453.263190866
l1events	305481

2.1.4 Events

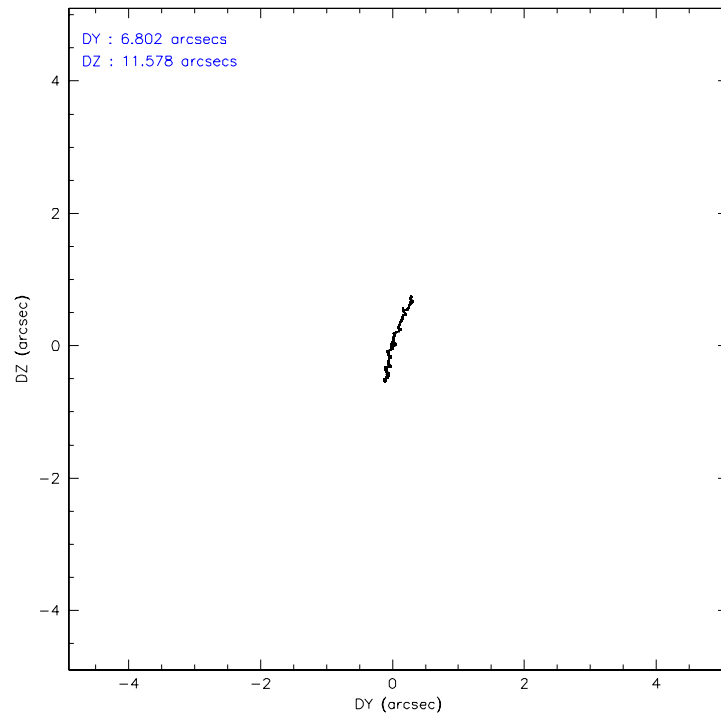
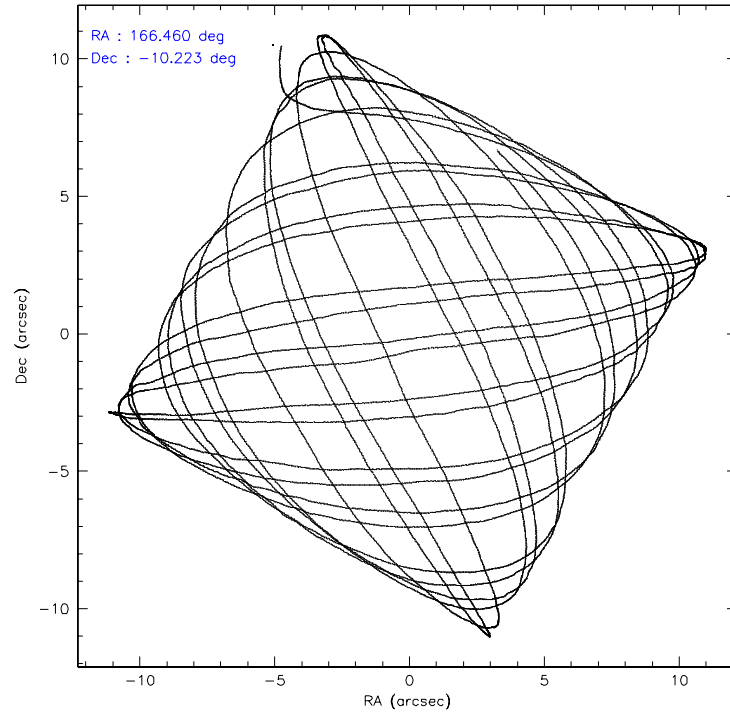
	ccd 0	ccd 1	ccd 2	ccd 3	ccd 6
level 1 events	58116	58753	63979	63553	61080
rejected events	52070	51583	57648	55825	54628
rejected %	89%	87%	90%	87%	89%

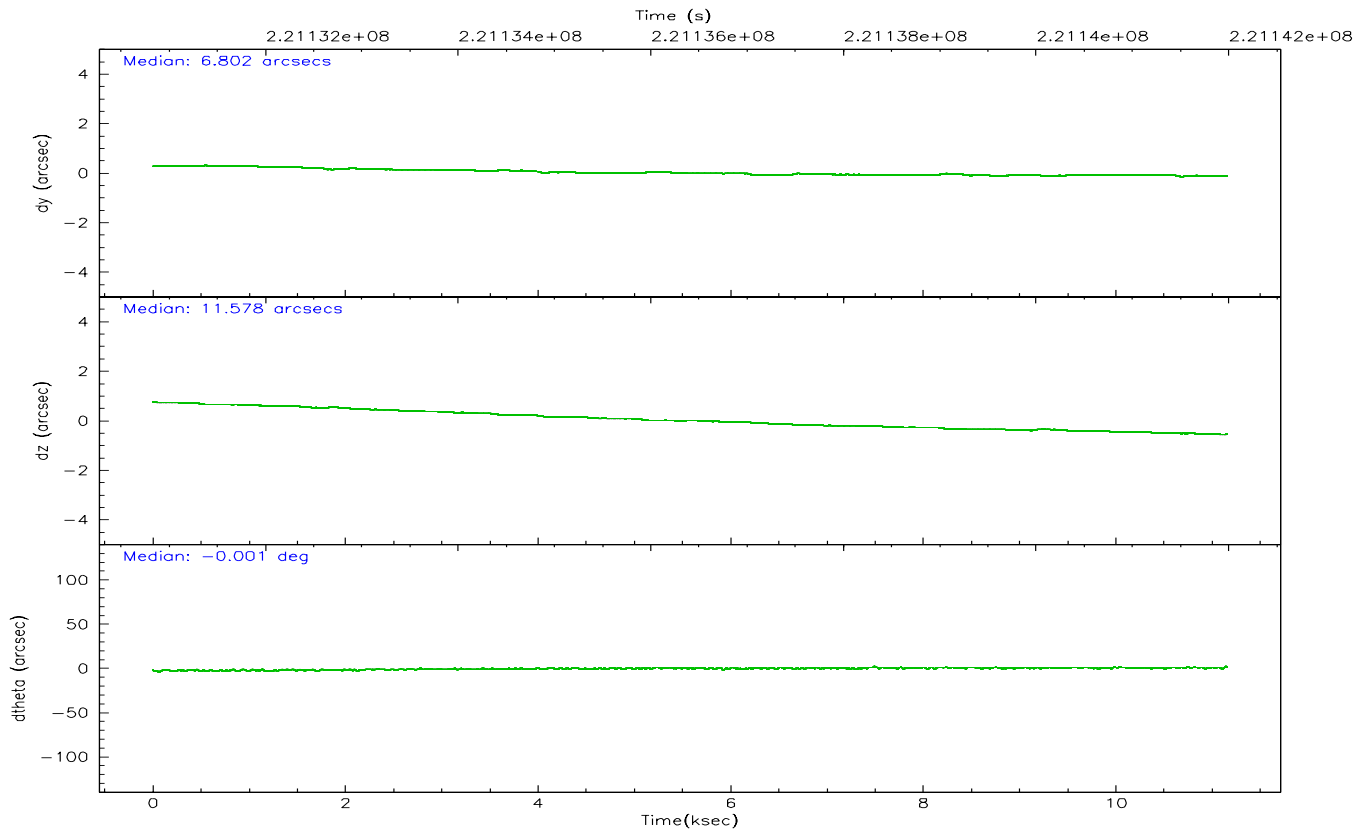
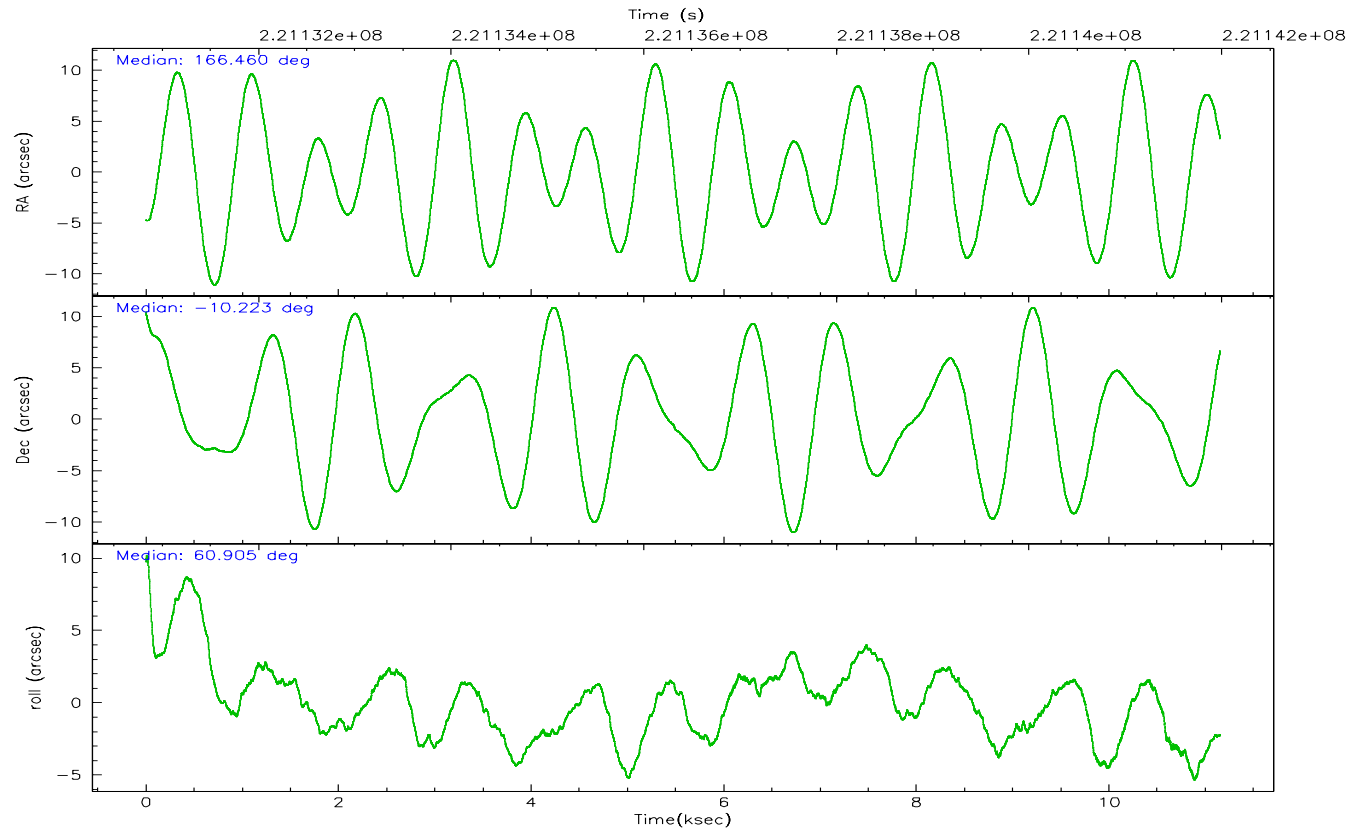
	ccd 0	ccd 1	ccd 2	ccd 3	ccd 6
grade 0 events	2086	2730	2446	3695	2369
	3%	4%	3%	5%	3%
grade 1 events	21	32	36	33	21
	0%	0%	0%	0%	0%
grade 2 events	1391	1487	1454	1371	1376
	2%	2%	2%	2%	2%
grade 3 events	732	784	632	753	674
	1%	1%	0%	1%	1%
grade 4 events	660	764	667	740	707
	1%	1%	1%	1%	1%
grade 5 events	2163	2287	2001	2451	2320
	3%	3%	3%	3%	3%
grade 6 events	1178	1407	1134	1170	1326
	2%	2%	1%	1%	2%
grade 7 events	49885	49262	55609	53340	52287
	85%	83%	86%	83%	85%

2.2 Compared Parameters

Parameter	Planned	Actual	Parameter	Planned	Actual
Instrument	ACIS	ACIS	Obspar format version number	6	6
Detector	ACIS-01236	ACIS-01236	Obspar file type	PREDICTED	ACTUAL
Grating	NONE	NONE	Obspar update status	NONE	UPDATED
Data mode	VFAINT	VFAINT	On-chip summing requested	N	N
Observation mode	POINTING	POINTING	Subarray requested	NONE	NONE
Pointing RA	166.460874	166.4603299224817	Alternating exposures requested	N	N
Pointing Dec	-10.250346	-10.22296214500721	Primary exposure time	0.000000	3.1
Pointing Roll	60.706004	60.91460609329499			
SIM focus pos (mm)	-0.782348	-0.7809083437167272			
SIM defocus (mm)	0	0.001439871863259334			
SIM translation stage pos (mm)	-229.442463	-229.4438428438578			
SIM translation stage offset (mm)	-4.15	-4.148610159071865			
Observation start time	221131580.184000	221130314.65877			
Observation start date	2005-01-03T09:25:16	2005-01-03T09:05:14			
Observation end time	221141987.184000	221142218.4968			
Observation end date	2005-01-03T12:18:43	2005-01-03T12:23:38			
Read mode	TIMED	TIMED			

2.3 Aspect



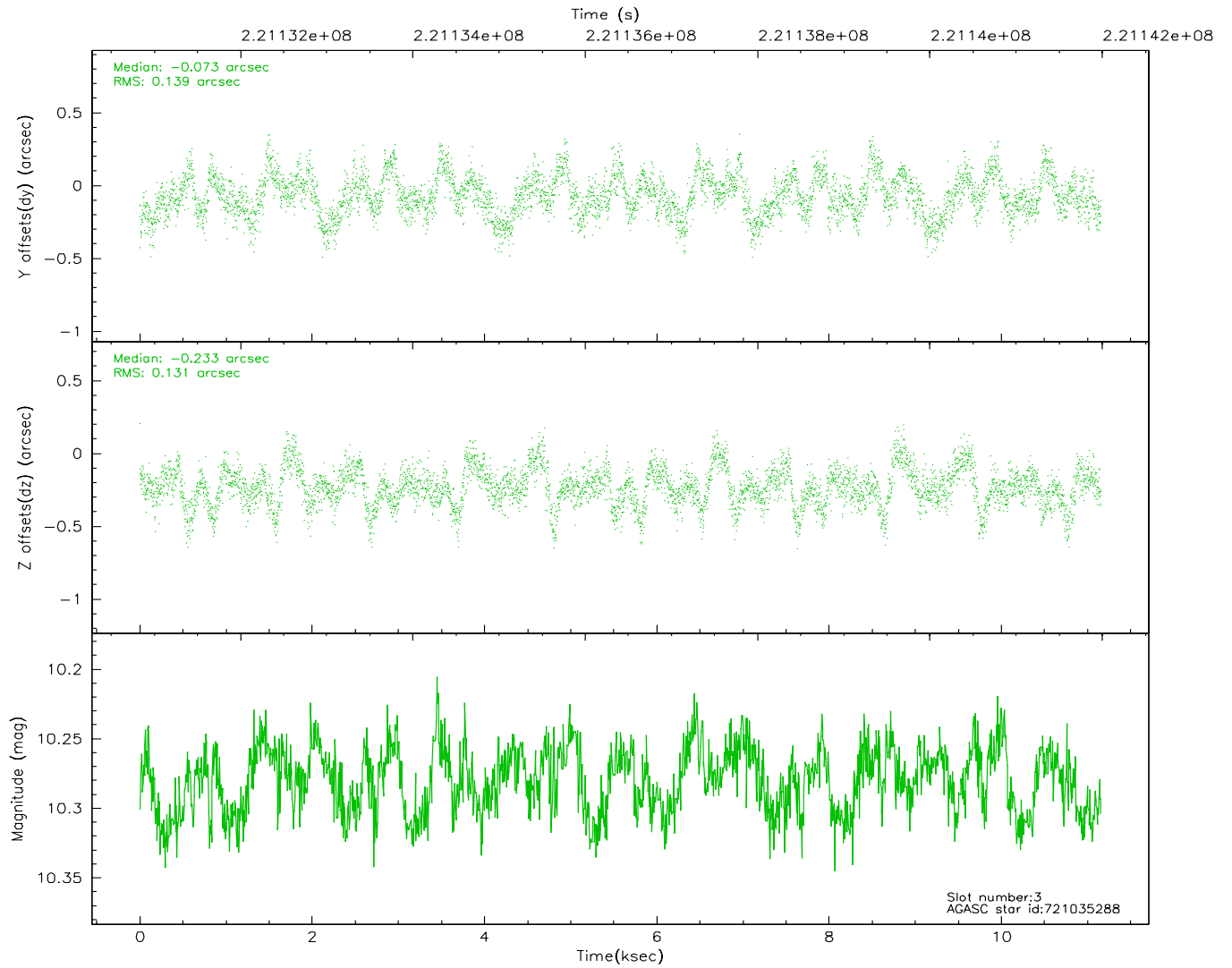
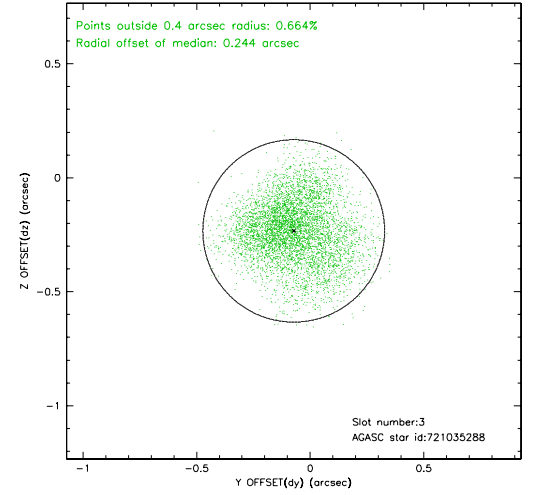
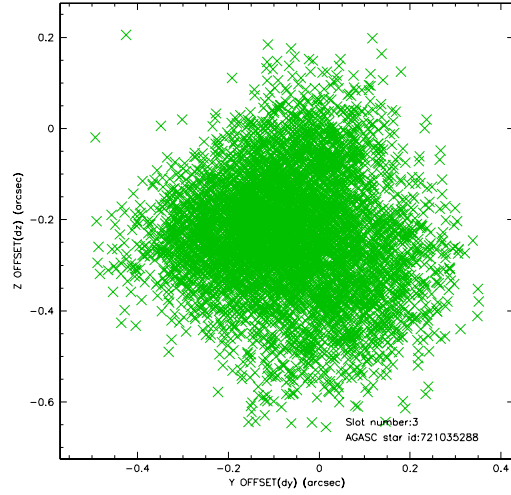


Slot Statistics

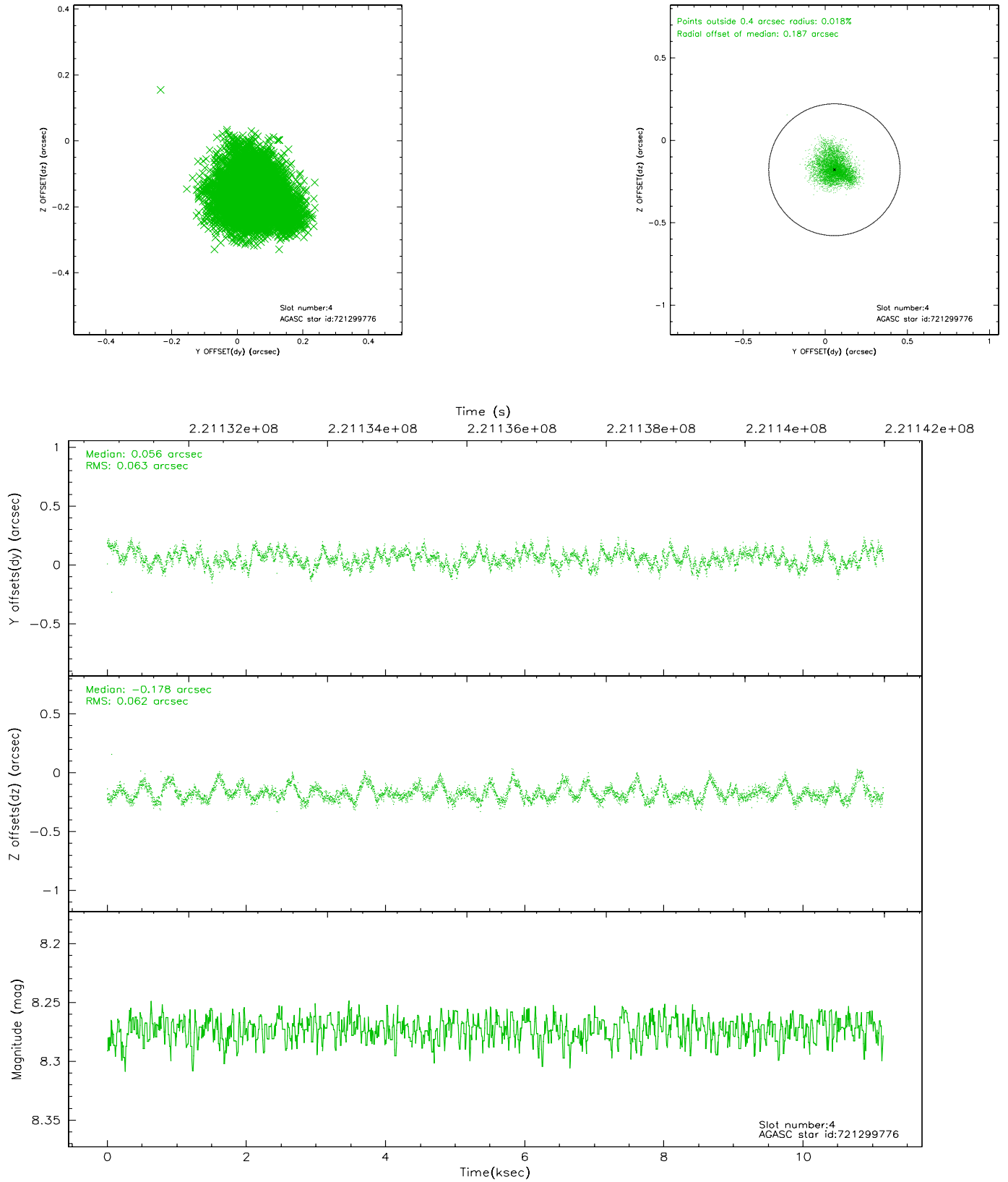
slot	status	id	mag	n_pts	med_dy	med_dz	dr1	dr2	ra	dec	mean_y	mean_z
0	FID	ACIS-I-1	7.24	2720	0.063	0.000	0.016	0.026	0.000000	0.000000	932.81	-920.27
1	FID	ACIS-I-5	7.22	2722	-0.174	0.084	0.009	0.015	0.000000	0.000000	-1815.24	977.10
2	FID	ACIS-I-6	7.25	2722	0.020	-0.014	0.011	0.017	0.000000	0.000000	397.86	1621.98
3	GUIDE	721035288	10.28	5425	-0.073	-0.233	0.208	0.326	166.480897	-9.719942	1699.99	872.48
4	GUIDE	721299776	8.27	5442	0.056	-0.178	0.095	0.151	165.954762	-10.326331	-1116.59	1428.68
5	GUIDE	721423408	8.55	5443	-0.085	0.359	0.096	0.151	167.239240	-10.270877	1281.99	-2441.37
6	GUIDE	721034296	10.19	5436	-0.069	-0.209	0.202	0.320	166.054619	-9.652340	1171.12	2310.03
7	GUIDE	721421584	10.03	5426	0.162	0.272	0.169	0.264	166.886293	-10.881232	-1244.88	-2422.86

2.4 Star Slots

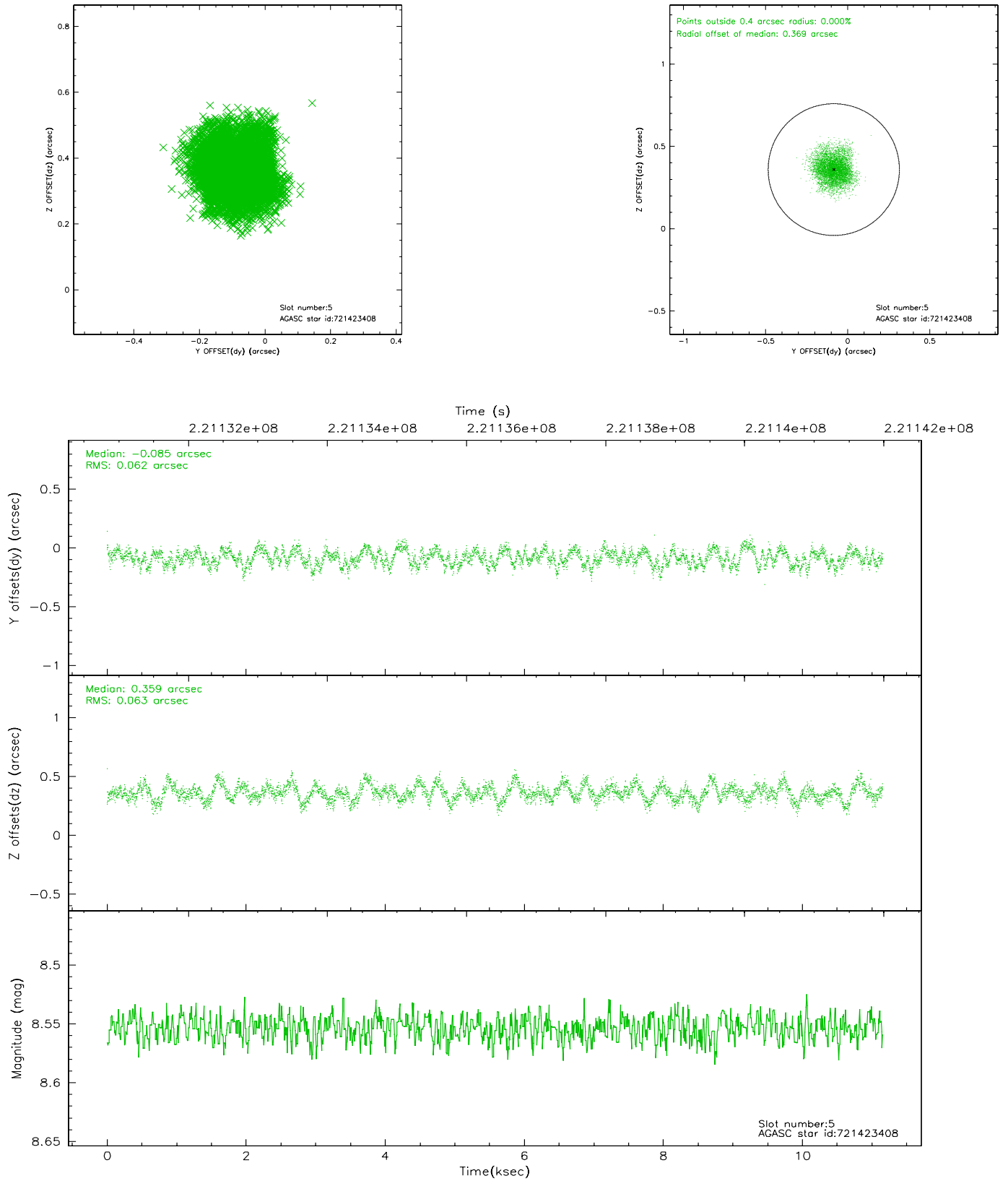
2.4.1 Slot 3



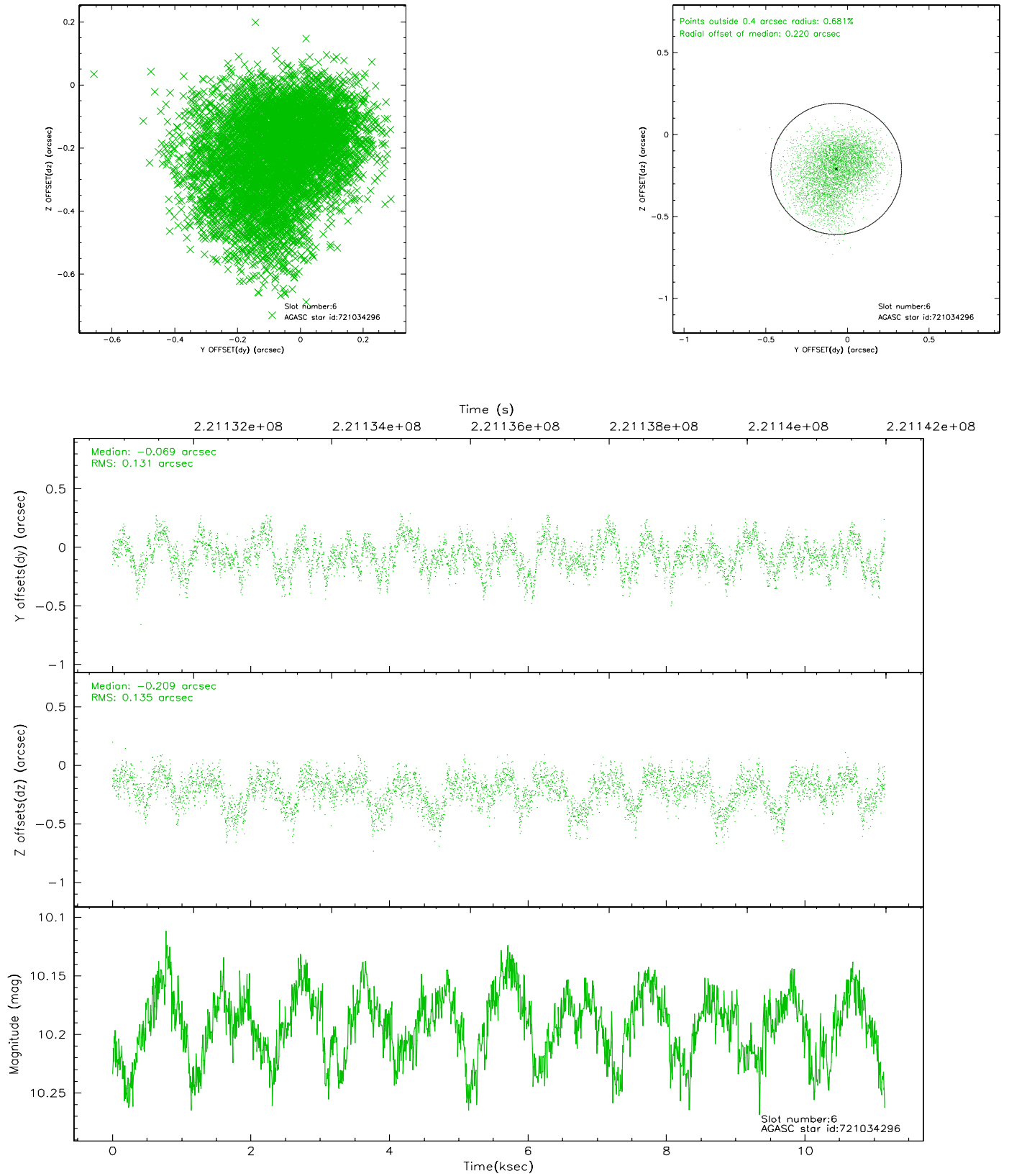
2.4.2 Slot 4



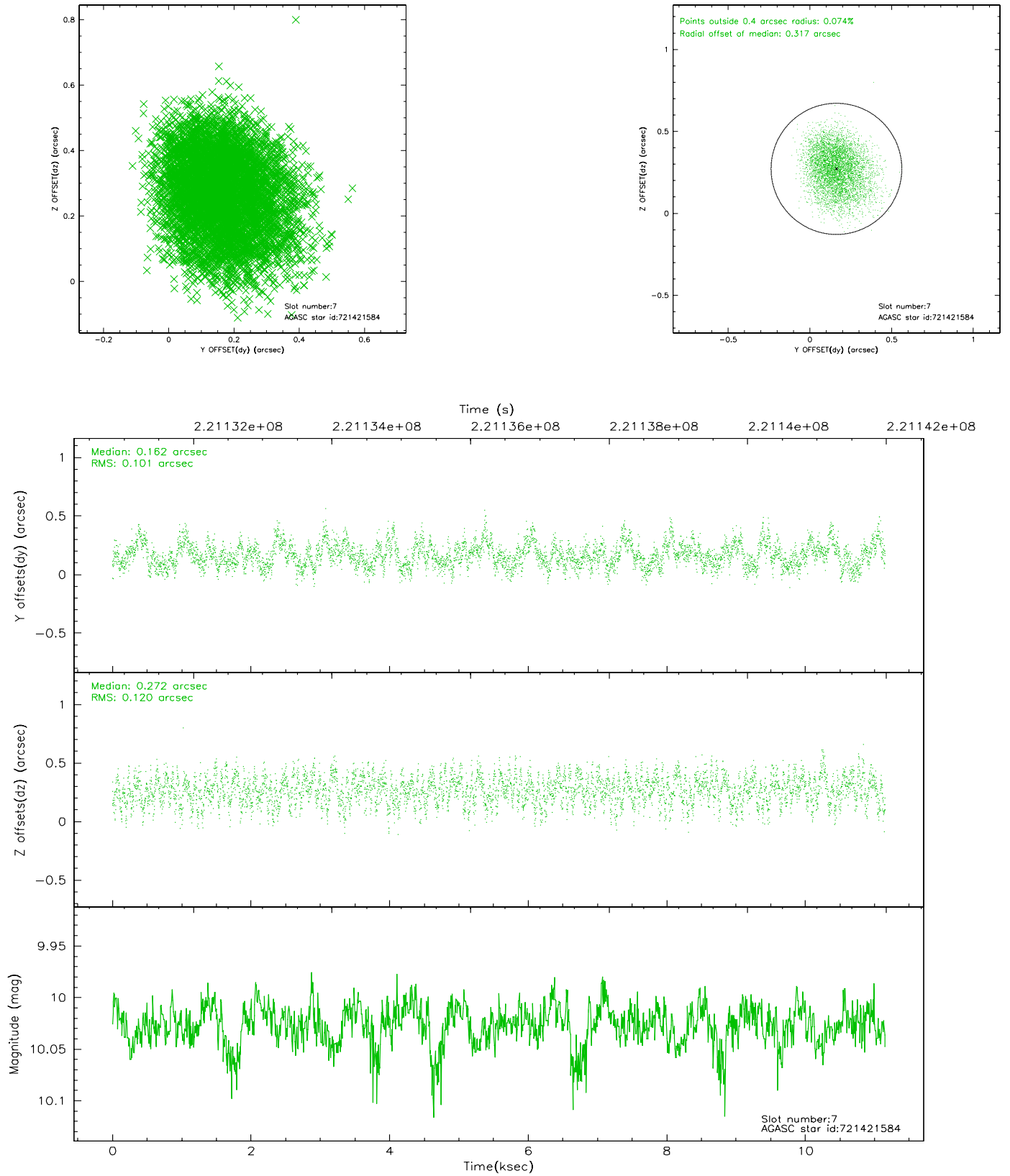
2.4.3 Slot 5



2.4.4 Slot 6

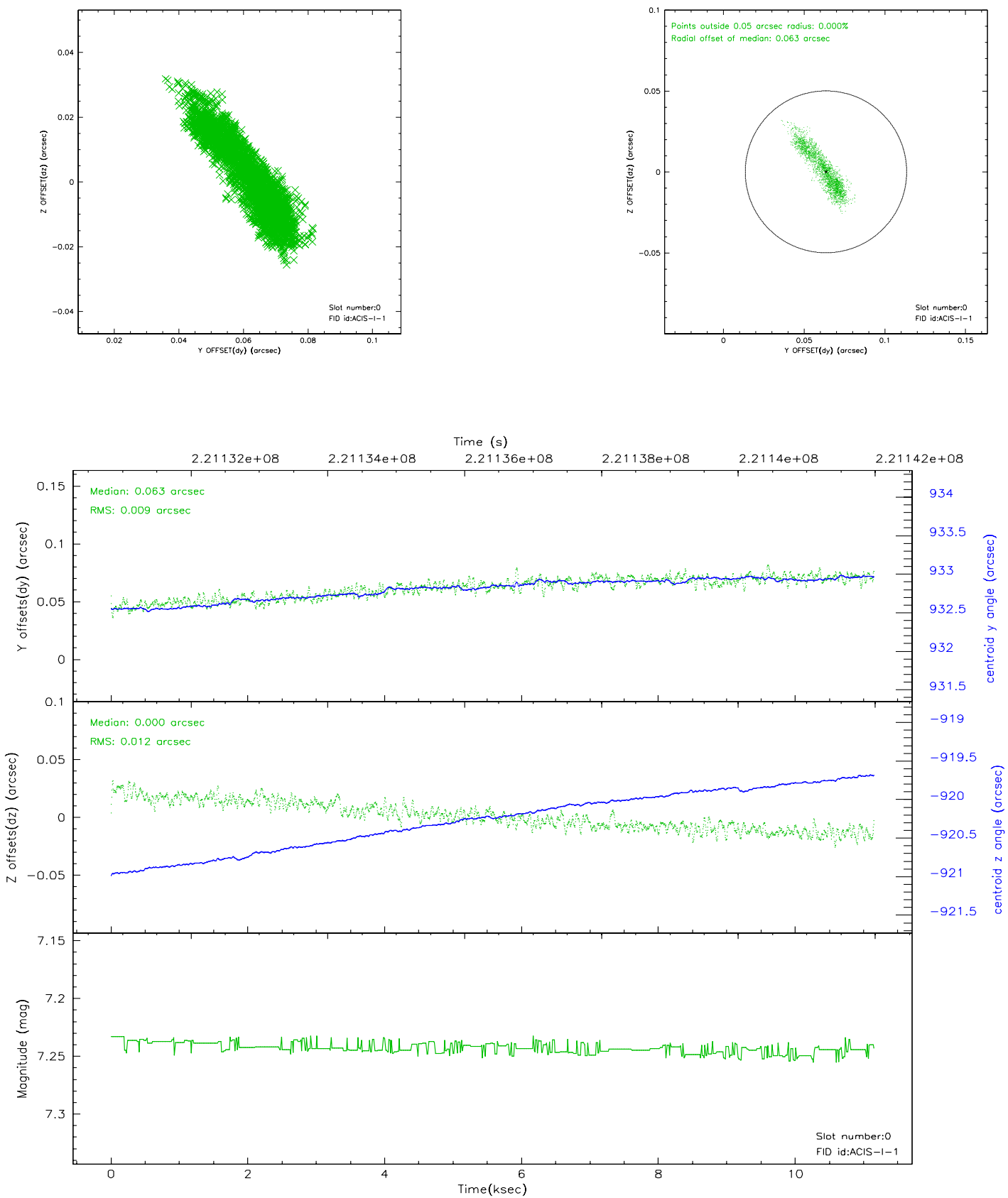


2.4.5 Slot 7

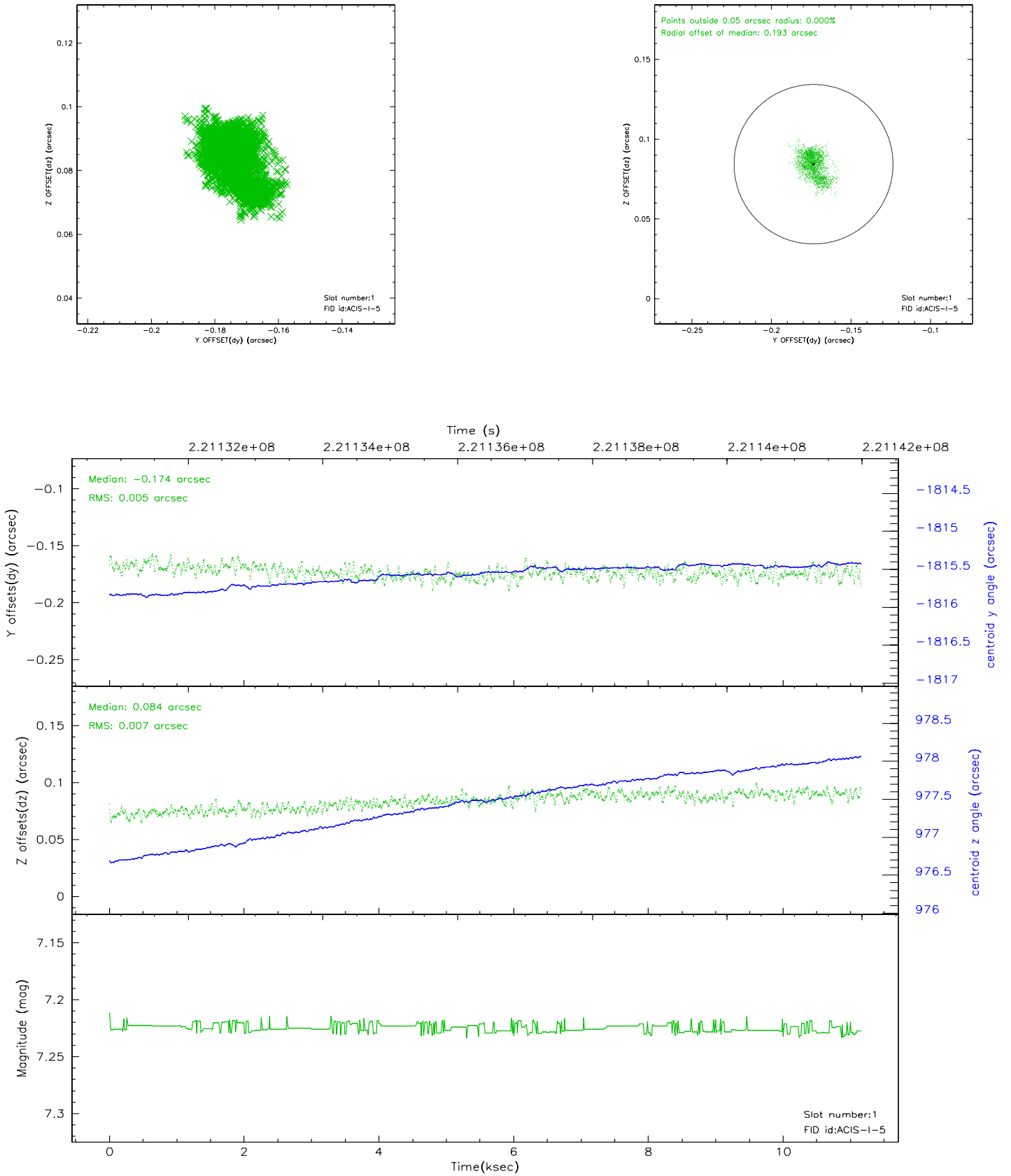


2.5 FID Slots

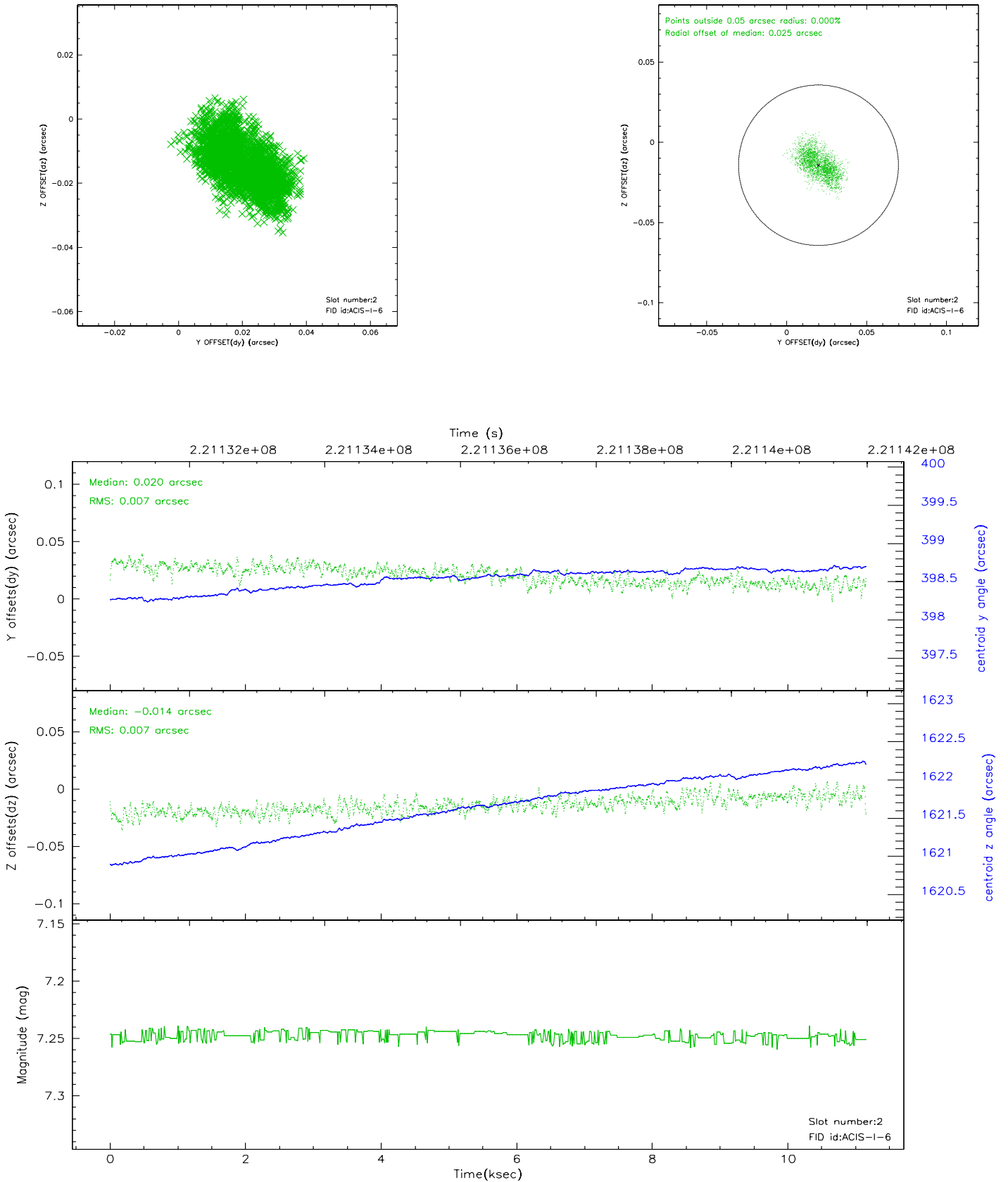
2.5.1 Slot 0



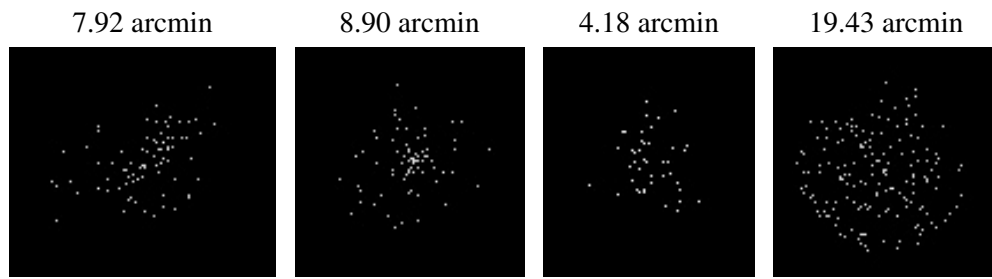
2.5.2 Slot 1



2.5.3 Slot 2



3 Point Sources



A Summary

A.1 Status

V&V Scientist	Jen Lauer
V&V Date (YYYY-MM-DD)	2006.03.16
V&V Edition	1
V&V Disposition and Status	OK
V&V Charge Time	10.45939

A.2 Comments