

# V&V Reference Report

## L2 ASCDS Version : 7.6.7.1

Observation 5809 - L2 Version 002  
Chandra X-Ray Center

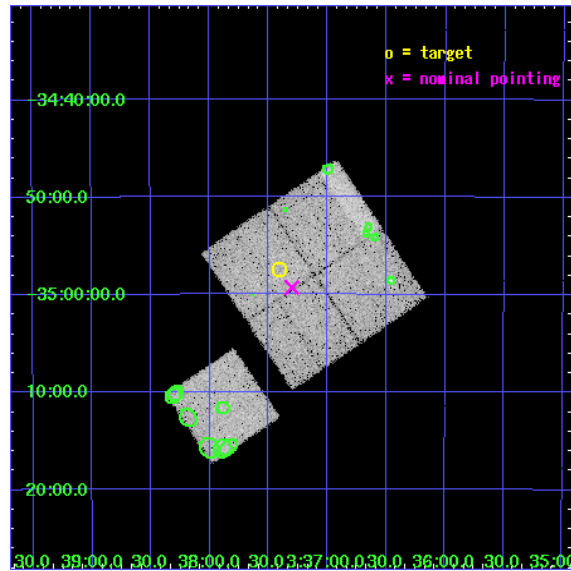
L2 Processing Date : Mar 17 2006

## Contents

<b>1</b>	<b>Front</b>	<b>2</b>
<b>2</b>	<b>OBI</b>	<b>3</b>
2.1	OBI . . . . .	3
2.1.1	Images . . . . .	3
2.1.2	Bias . . . . .	3
2.1.3	Parameters . . . . .	4
2.1.4	Events . . . . .	4
2.2	Compared Parameters . . . . .	5
2.3	Aspect . . . . .	6
2.4	Star Slots . . . . .	9
2.4.1	Slot 3 . . . . .	9
2.4.2	Slot 4 . . . . .	10
2.4.3	Slot 5 . . . . .	11
2.4.4	Slot 6 . . . . .	12
2.4.5	Slot 7 . . . . .	13
2.5	FID Slots . . . . .	14
2.5.1	Slot 0 . . . . .	14
2.5.2	Slot 1 . . . . .	15
2.5.3	Slot 2 . . . . .	16
<b>3</b>	<b>Point Sources</b>	<b>17</b>
<b>A</b>	<b>Summary</b>	<b>18</b>
A.1	Status . . . . .	18
A.2	Comments . . . . .	18

# 1 Front

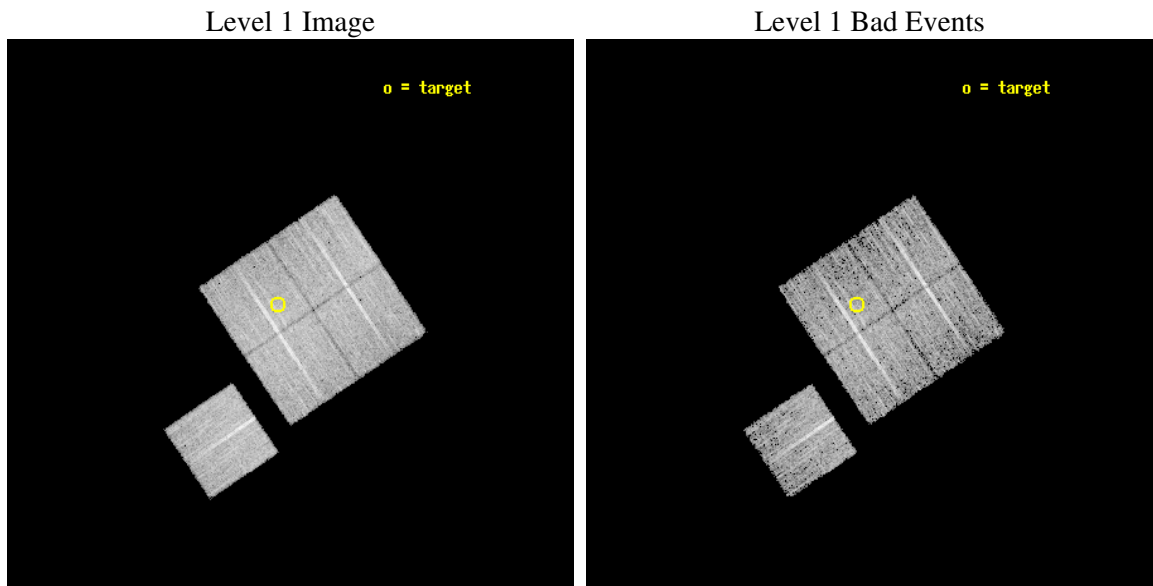
seq_num	800522
obs_id	5809
title	The Galaxy Cluster Mass-T <sub>x</sub> Relation at High Redshift
observer	Dr. Spencer Stanford
object	RX J0337-3457
dtcycle	0
cycle	P
ra_targ	54.352917
dec_targ	-34.958056
ra_nom	54.325312187928
dec_nom	-34.988171790226
roll_nom	236.03296048217
revision	2
ontime	6881.9999867678
livetime	6792.081590486
ontime0	6878.8590265214
ontime1	6881.9999867678
ontime2	6878.8589965701
ontime3	6881.9999867678
ontime6	6875.71802634
l2events	83606



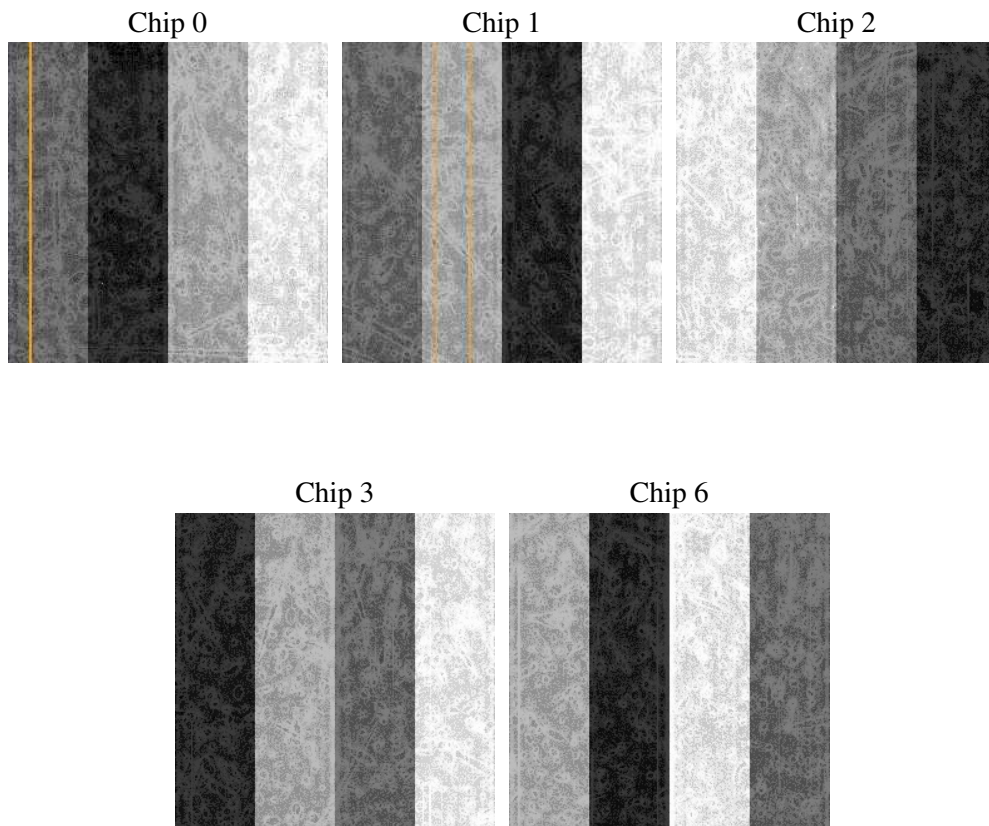
## 2 OBI

### 2.1 OBI

#### 2.1.1 Images



#### 2.1.2 Bias



### 2.1.3 Parameters

obi_num	0
ascdsver	7.6.7.1
caldbver	3.2.1
date	2006-03-17T20:57:36
revision	2

sched_exp_time	6705.396000
ontime	7214.8801778257
ontime0	7211.7392175794
ontime1	7214.8801778257
ontime2	7211.739187628
ontime3	7214.8801778257
ontime6	7208.5982373059
l1events	297107

### 2.1.4 Events

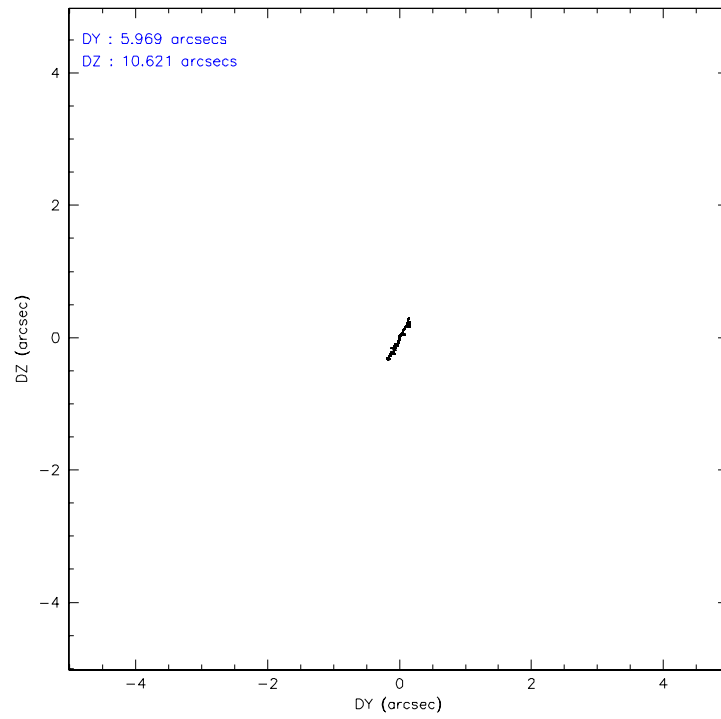
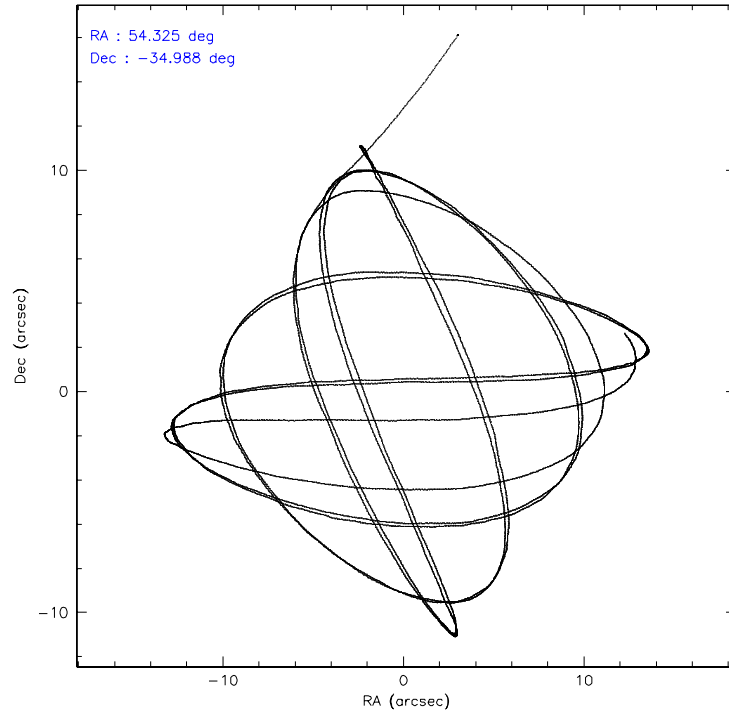
	<b>ccd 0</b>	<b>ccd 1</b>	<b>ccd 2</b>	<b>ccd 3</b>	<b>ccd 6</b>
level 1 events	54633	60283	60391	58344	63456
rejected events	37654	39887	43844	41207	43323
rejected %	68%	66%	72%	70%	68%

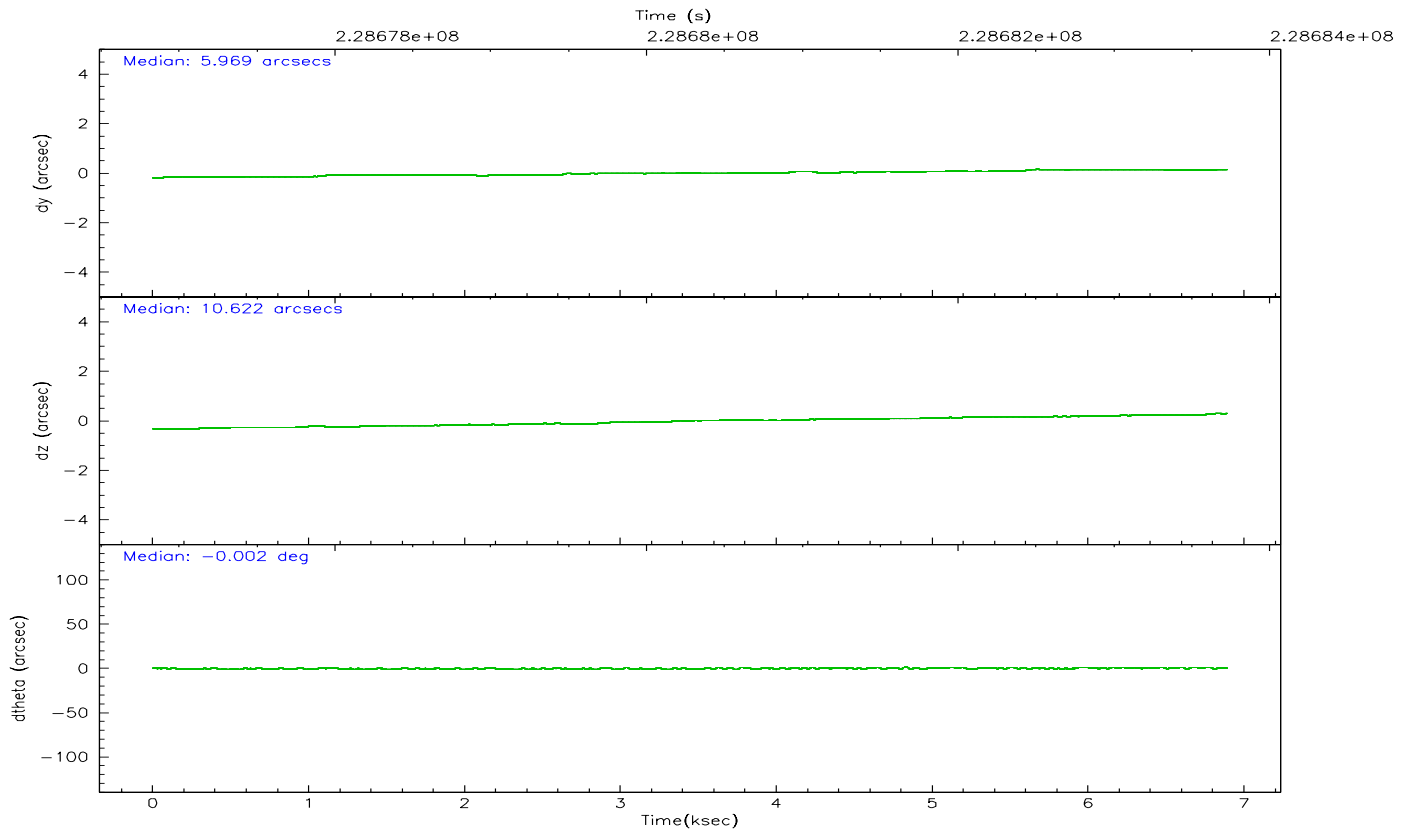
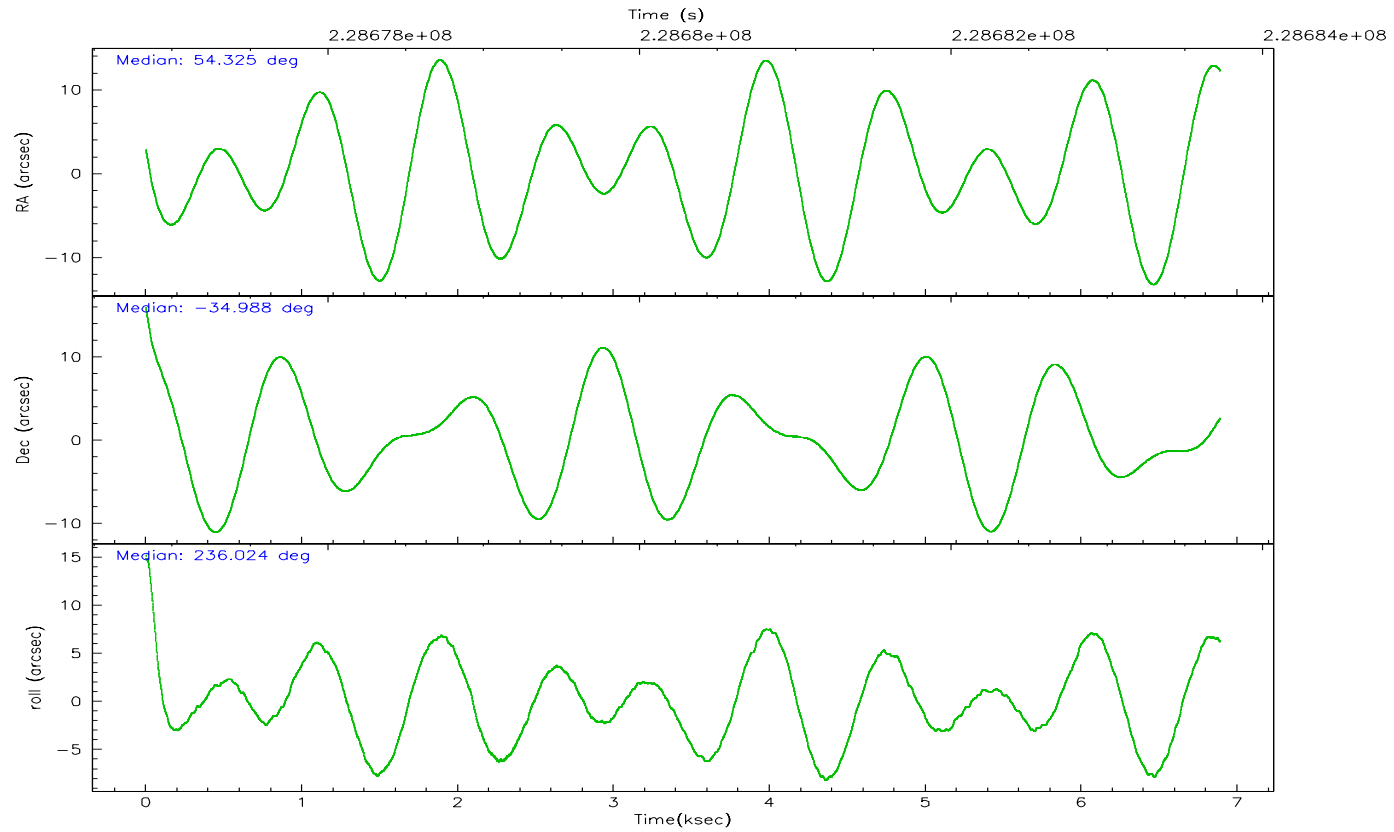
	<b>ccd 0</b>	<b>ccd 1</b>	<b>ccd 2</b>	<b>ccd 3</b>	<b>ccd 6</b>
grade 0 events	10079	12595	10079	10583	12593
	18%	20%	16%	18%	19%
grade 1 events	72	82	70	75	70
	0%	0%	0%	0%	0%
grade 2 events	2737	3290	2580	2479	2879
	5%	5%	4%	4%	4%
grade 3 events	1106	1204	1085	1111	1188
	2%	1%	1%	1%	1%
grade 4 events	1073	1207	1058	1124	1184
	1%	2%	1%	1%	1%
grade 5 events	1532	1771	1618	1773	1875
	2%	2%	2%	3%	2%
grade 6 events	2260	2414	2042	2158	2621
	4%	4%	3%	3%	4%
grade 7 events	35774	37720	41859	39041	41046
	65%	62%	69%	66%	64%

## 2.2 Compared Parameters

Parameter	Planned	Actual	Parameter	Planned	Actual
Instrument	ACIS	ACIS	Obspar format version number	6	6
Detector	ACIS-01236	ACIS-01236	Obspar file type	PREDICTED	ACTUAL
Grating	NONE	NONE	Obspar update status	NONE	UPDATED
Data mode	VFAINT	VFAINT	On-chip summing requested	N	N
Observation mode	POINTING	POINTING	Subarray requested	NONE	NONE
Pointing RA	54.327511	54.3253121879282	Alternating exposures requested	N	N
Pointing Dec	-34.960835	-34.98817179022578	Primary exposure time	0.000000	3.1
Pointing Roll	235.825523	236.0329604821654			
SIM focus pos (mm)	-0.782348	-0.7809083437167272			
SIM defocus (mm)	0	0.001439871863259334			
SIM translation stage pos (mm)	-227.592463	-227.5933067819097			
SIM translation stage offset (mm)	-6	-5.999146221020027			
Observation start time	228677019.184000	228675798.17514			
Observation start date	2005-03-31T17:22:35	2005-03-31T17:03:18			
Observation end time	228683724.184000	228683960.25051			
Observation end date	2005-03-31T19:14:20	2005-03-31T19:19:20			
Read mode	TIMED	TIMED			

## 2.3 Aspect





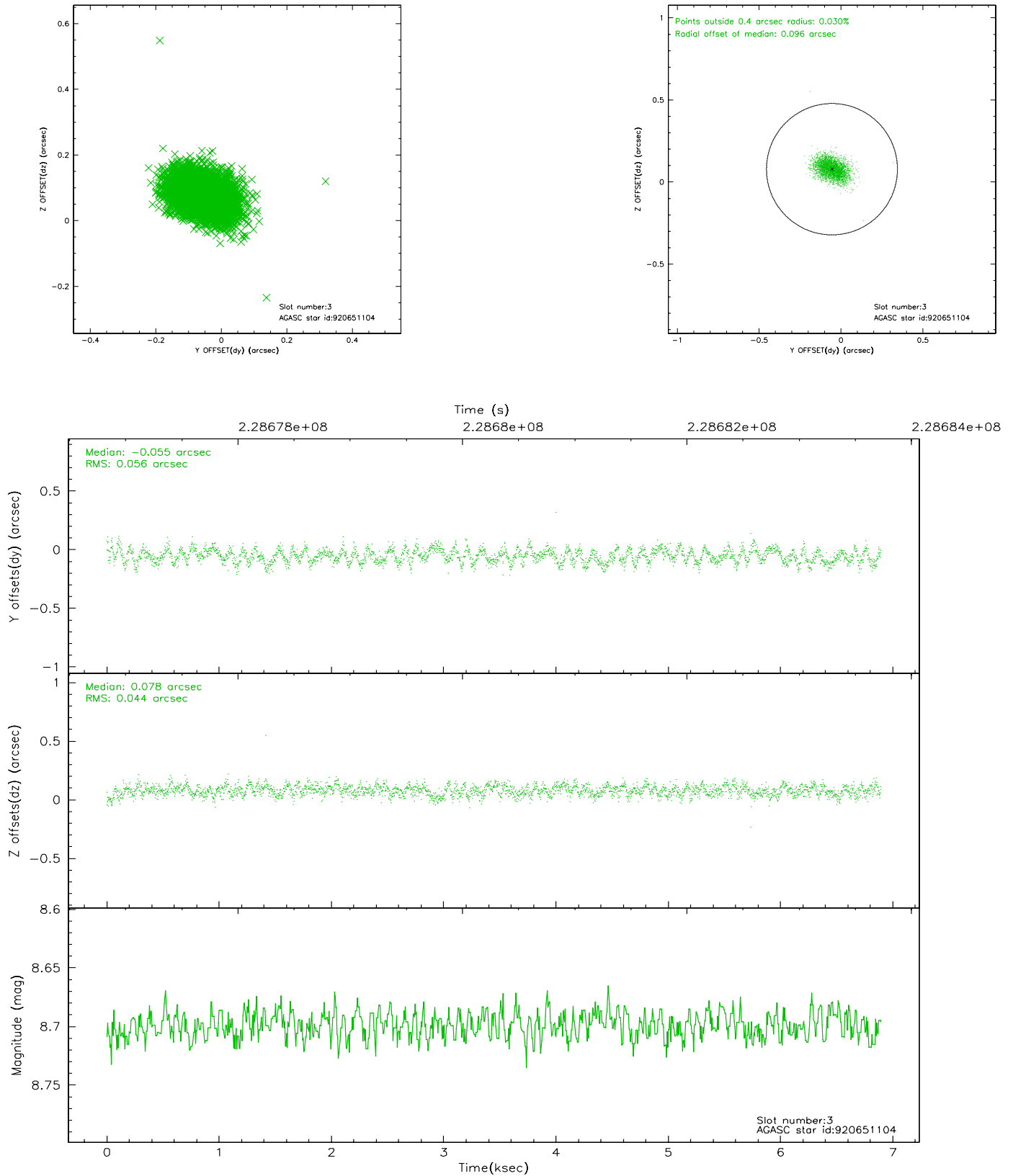
### Slot Statistics

slot	status	id	mag	n_pts	med_dy	med_dz	dr1	dr2	ra	dec	mean_y	mean_z
0	FID	ACIS-I-1	7.22	1680	0.056	-0.026	0.009	0.016	0.000000	0.000000	933.69	-957.23
1	FID	ACIS-I-5	7.22	1680	-0.200	0.063	0.006	0.010	0.000000	0.000000	-1814.21	939.84
2	FID	ACIS-I-6	7.25	1680	0.052	0.035	0.009	0.014	0.000000	0.000000	398.31	1585.28
3	GUIDE	920651104	8.70	3361	-0.055	0.078	0.075	0.120	53.495721	-34.796351	900.31	-2360.69
4	GUIDE	920651808	7.29	3296	0.041	0.074	0.057	0.091	53.624364	-34.832415	791.75	-1974.76
5	GUIDE	921573752	8.42	3362	-0.036	-0.052	0.082	0.130	55.297577	-34.906150	-1760.21	2266.14
6	GUIDE	921575528	7.95	3361	0.033	0.019	0.056	0.091	55.012292	-34.549755	-2359.19	853.58
7	GUIDE	921966544	7.92	3361	0.003	-0.117	0.061	0.096	54.743508	-35.636012	1328.69	2374.44

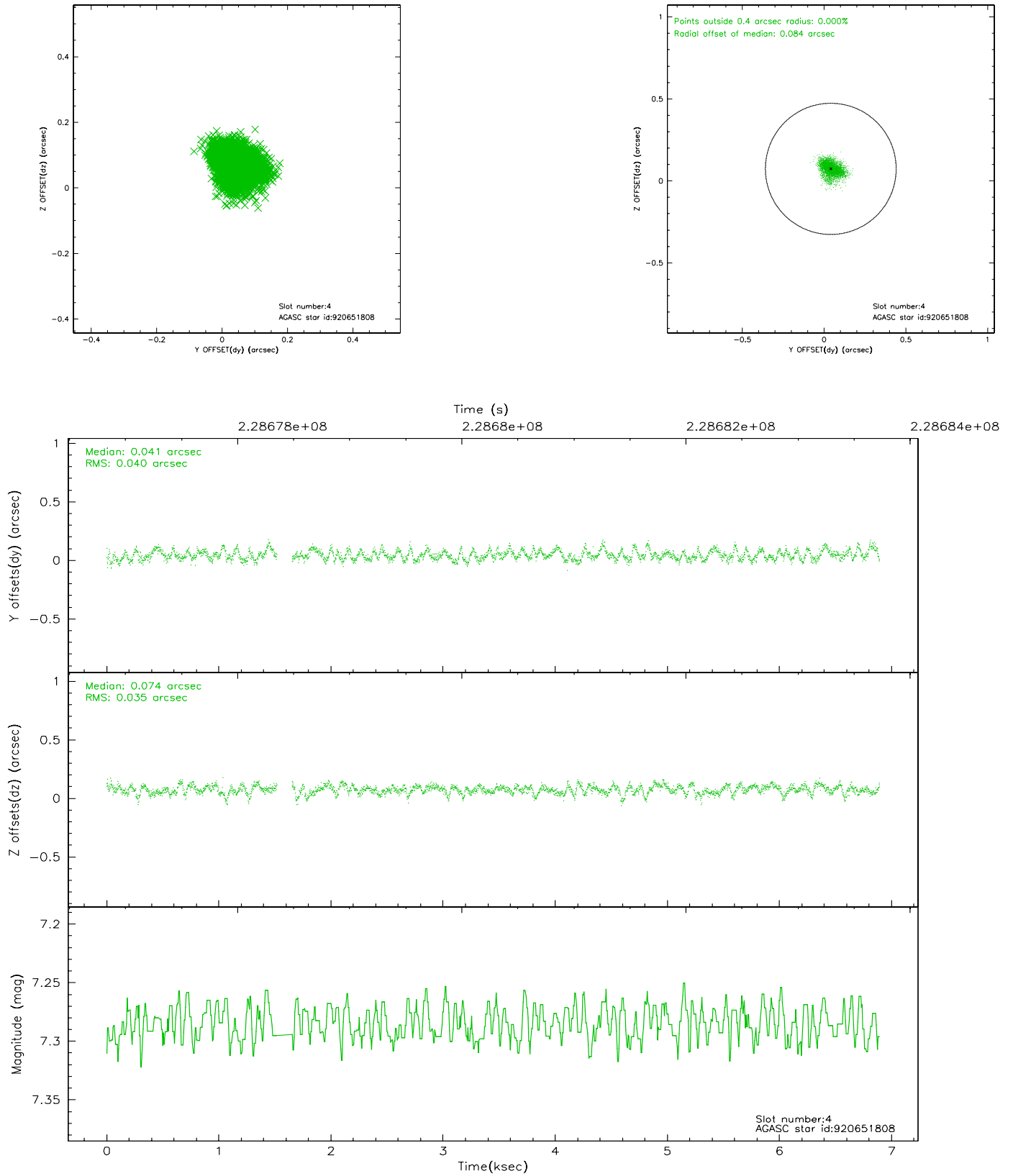


## 2.4 Star Slots

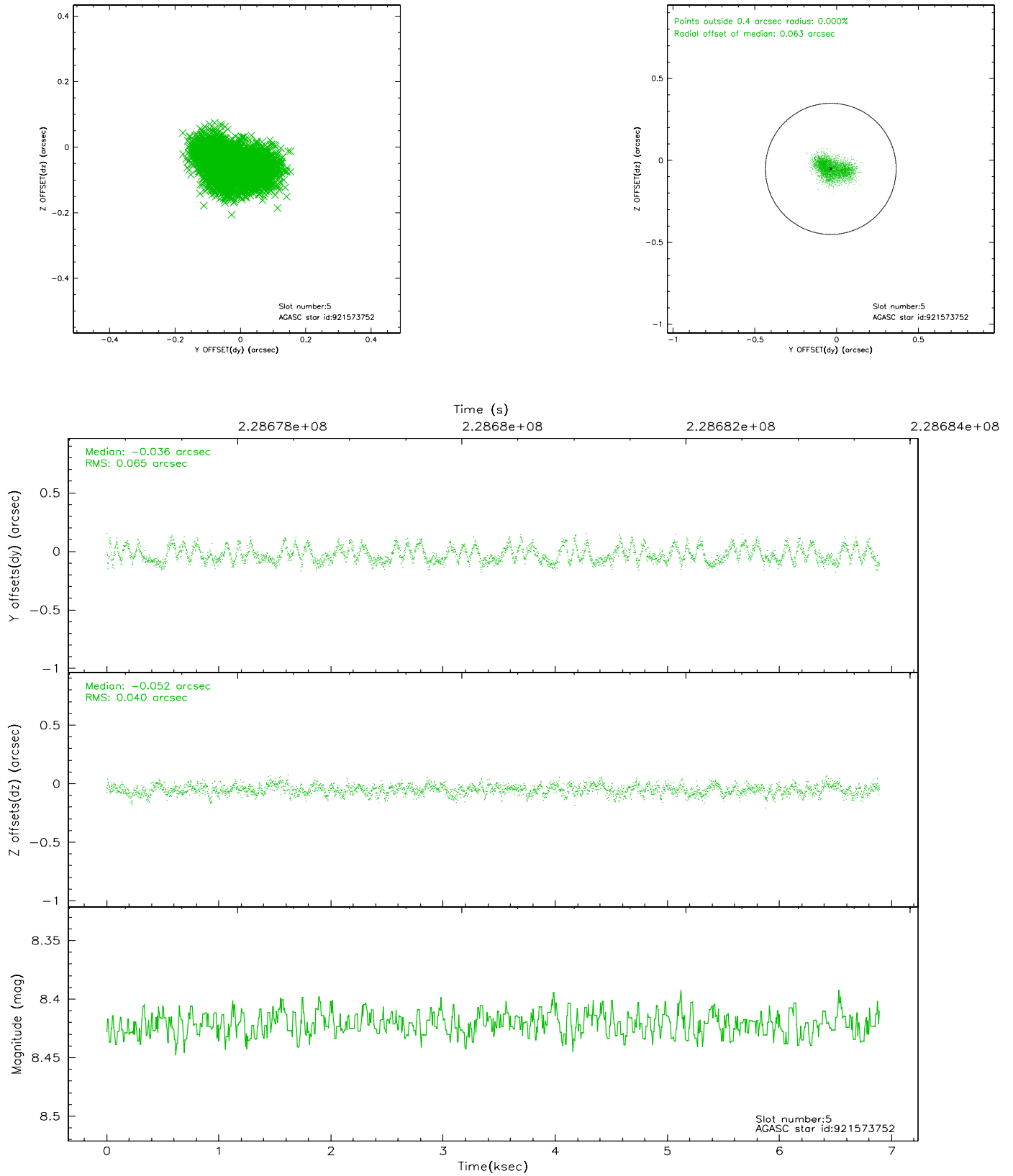
### 2.4.1 Slot 3



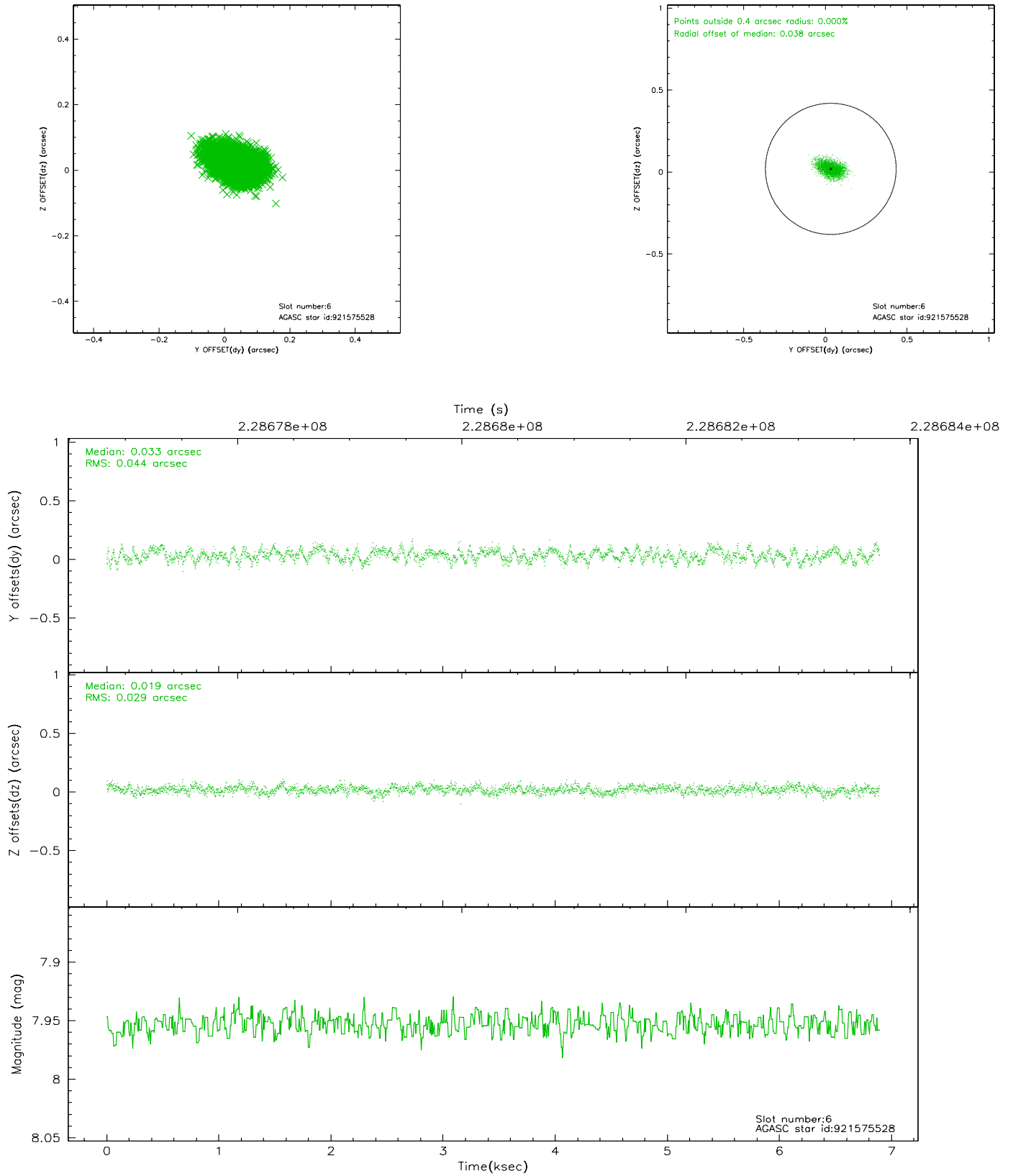
## 2.4.2 Slot 4



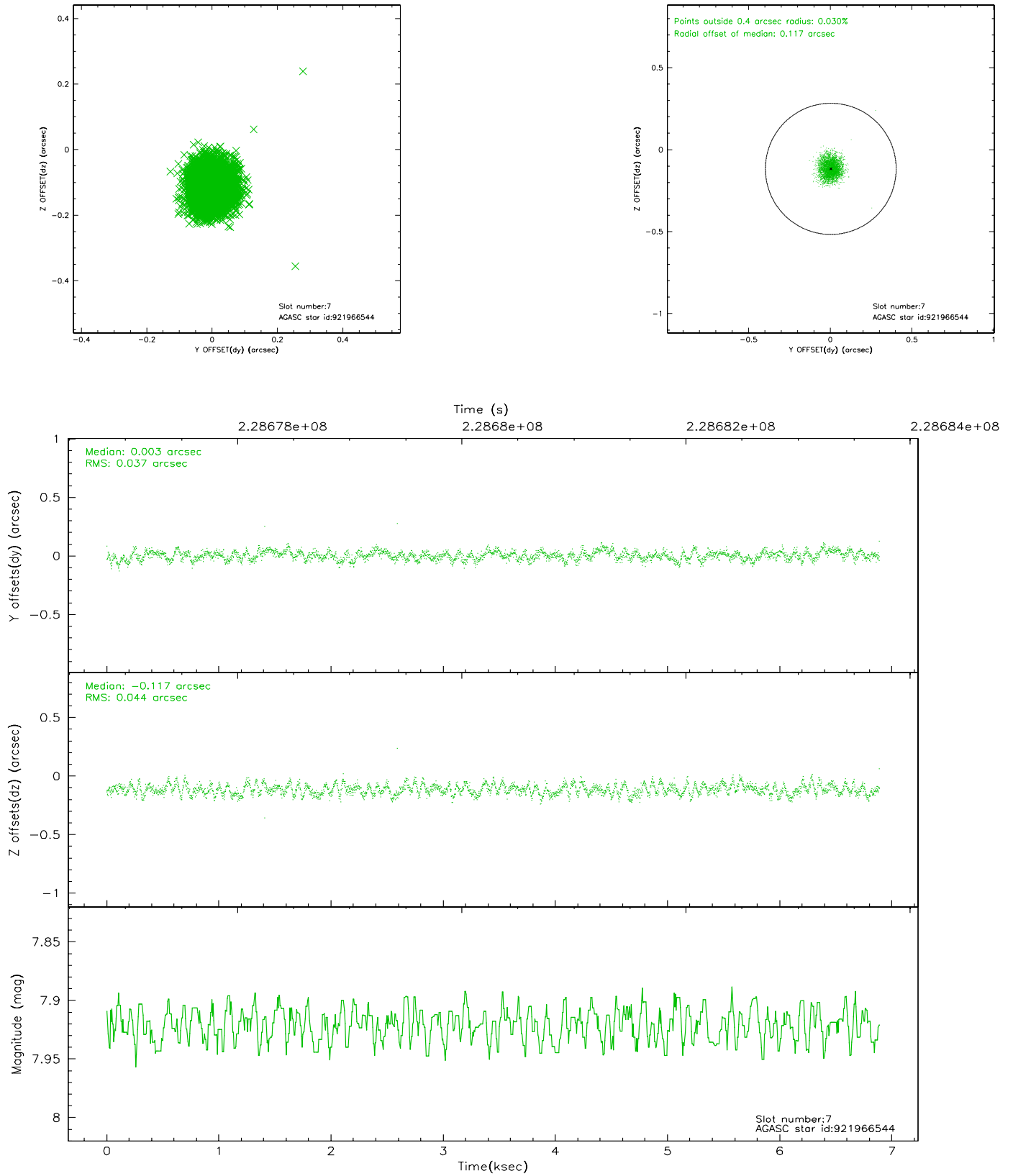
### 2.4.3 Slot 5



## 2.4.4 Slot 6

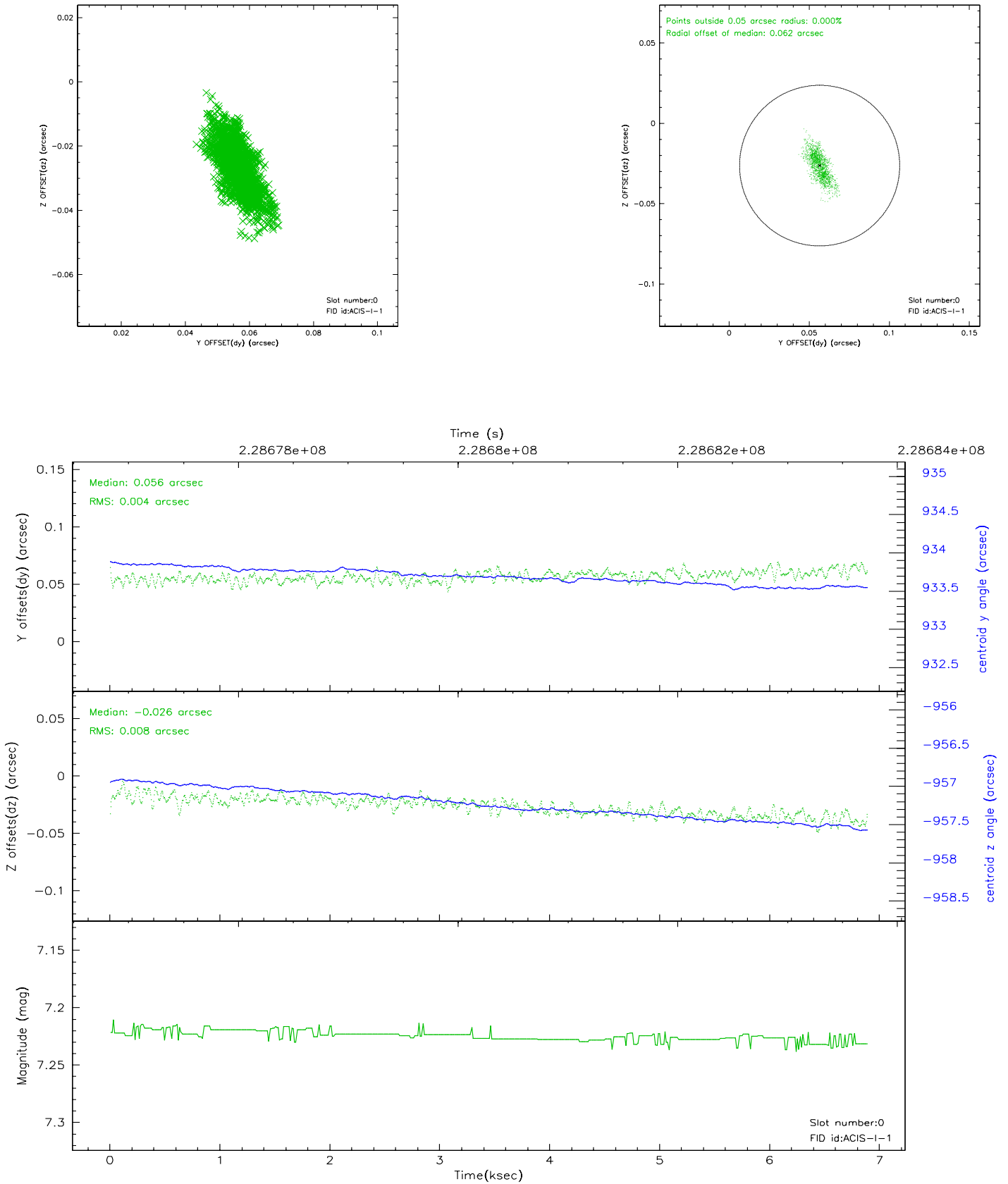


## 2.4.5 Slot 7

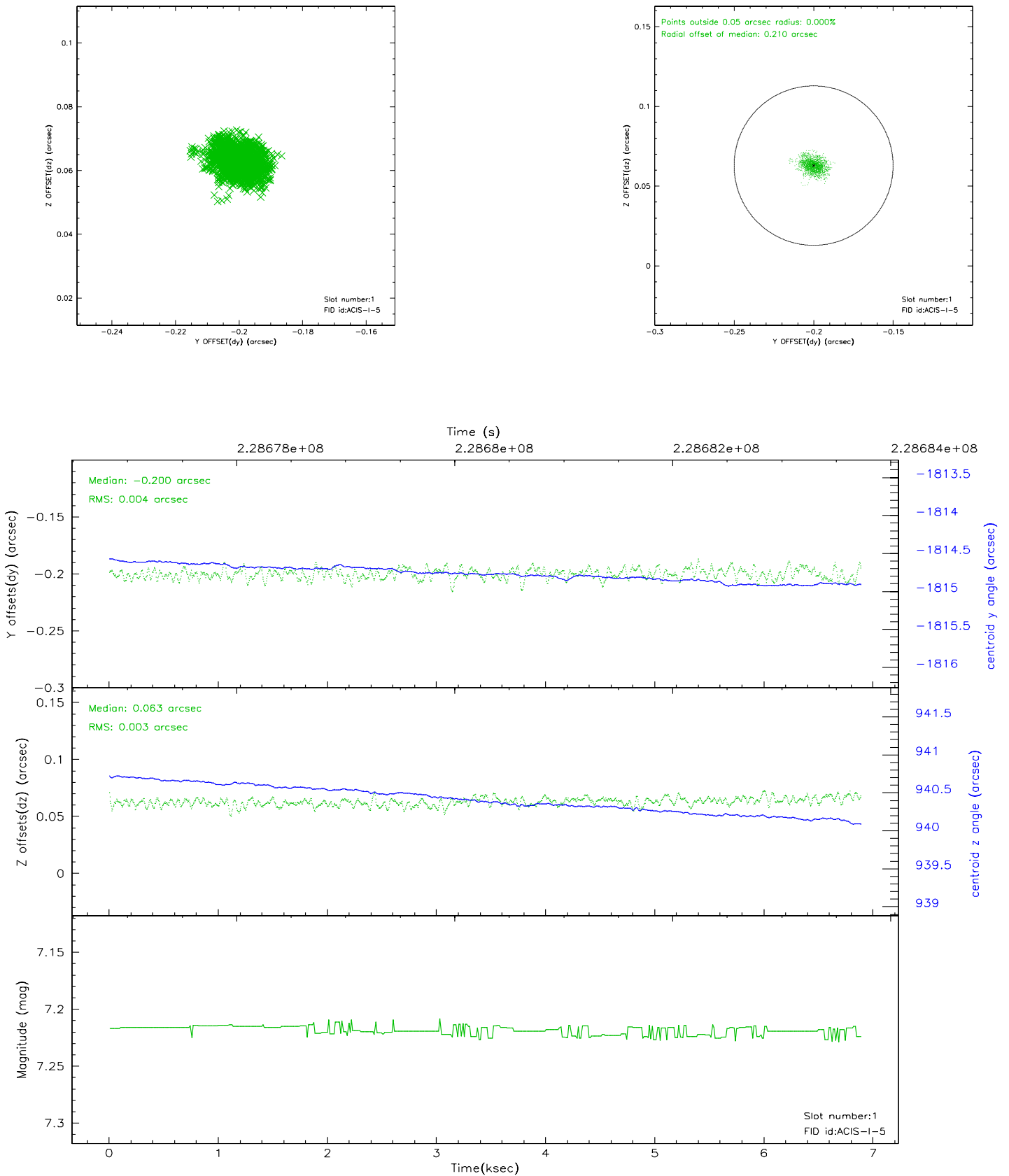


## 2.5 FID Slots

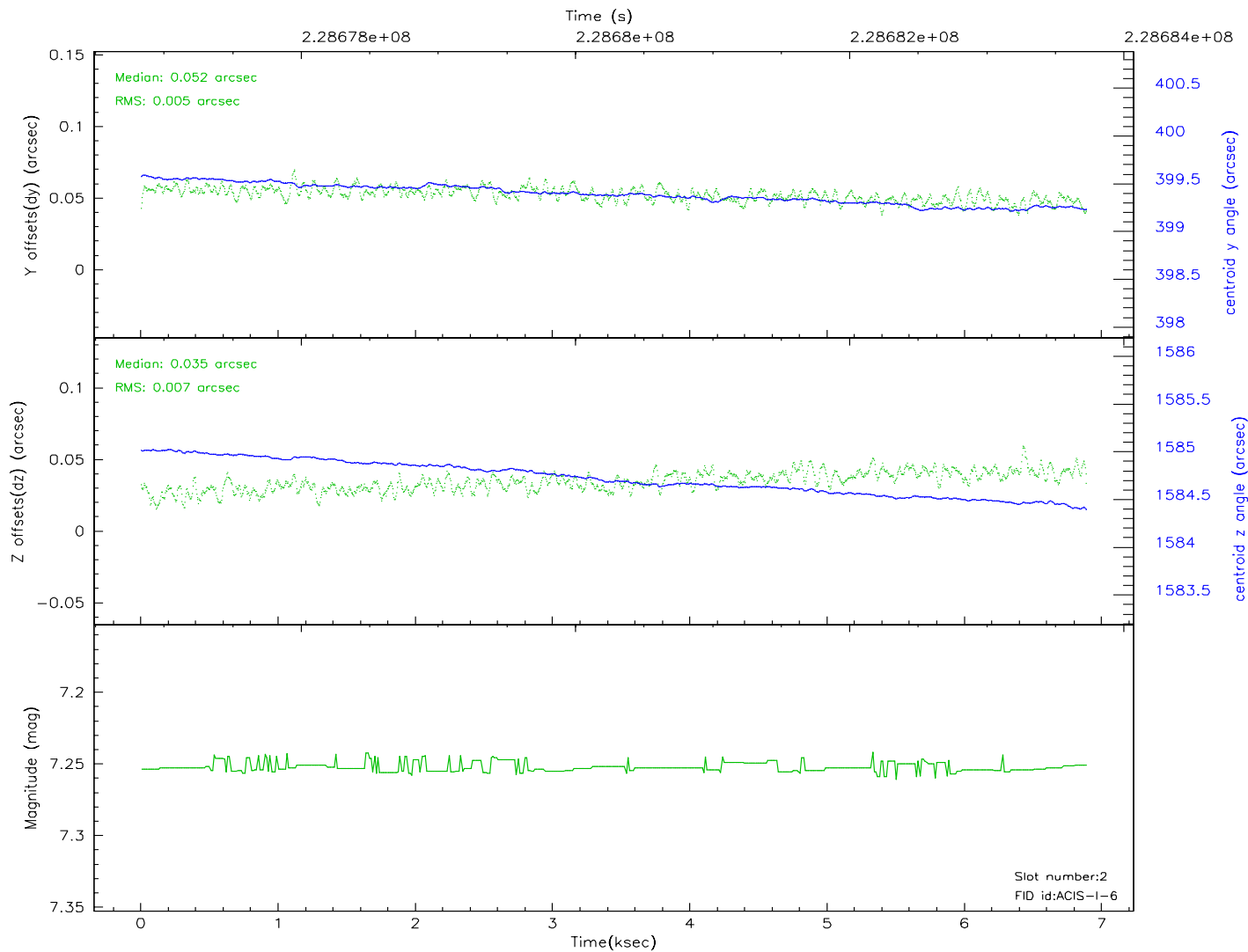
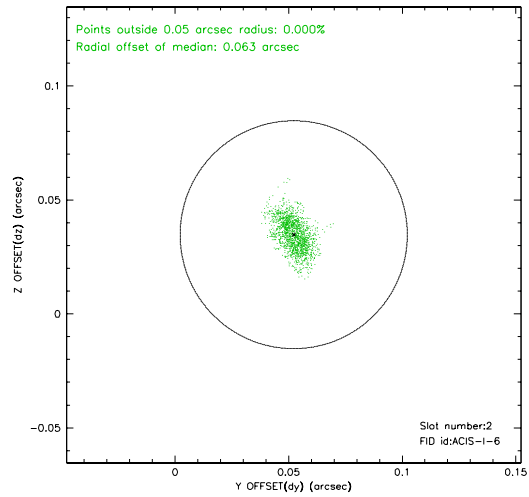
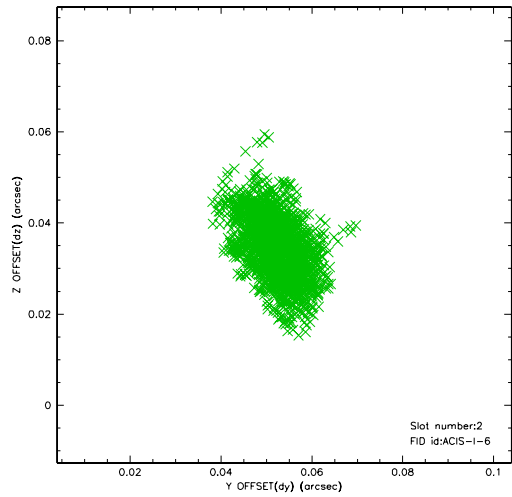
### 2.5.1 Slot 0



## 2.5.2 Slot 1

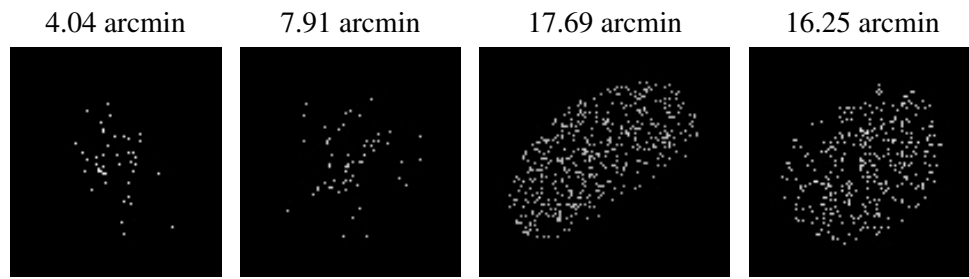


2.5.3 Slot 2





### 3 Point Sources



## A Summary

### A.1 Status

V&V Scientist	Jen Lauer
V&V Date (YYYY-MM-DD)	2006.03.20
V&V Edition	1
V&V Disposition and Status	OK
V&V Charge Time	6.881999

### A.2 Comments