

V&V Reference Report

L2 ASCDS Version : 8.5.1.1

Observation 5790 - L2 Version 3
Chandra X-Ray Center

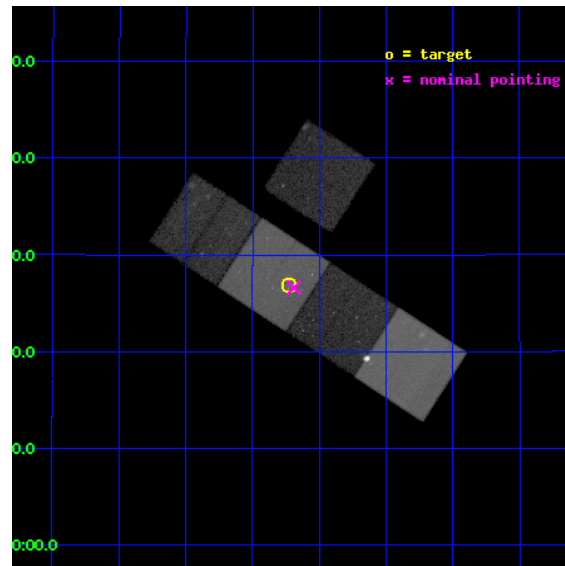
L2 Processing Date : Dec 20 2012

Contents

1	Front	2
2	OBI	3
2.1	OBI	3
2.1.1	Images	3
2.1.2	Bias	3
2.1.3	Parameters	4
2.1.4	Events	4
2.2	Compared Parameters	5
2.3	Aspect	6
2.4	Star Slots	9
2.4.1	Slot 3	9
2.4.2	Slot 4	10
2.4.3	Slot 5	11
2.4.4	Slot 6	12
2.4.5	Slot 7	13
2.5	FID Slots	14
2.5.1	Slot 0	14
2.5.2	Slot 1	15
2.5.3	Slot 2	16
A	Summary	17
A.1	Status	17
A.2	Comments	17

1 Front

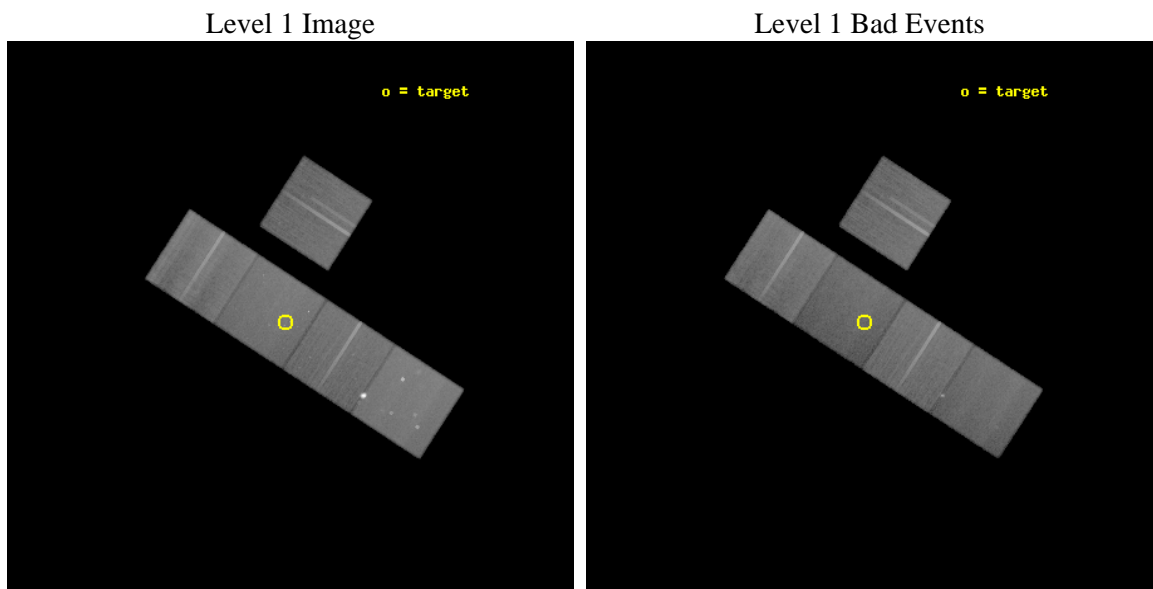
seq_num	800503	Sequence number
obs_id	5790	Observation id
title	Dark Matter in Isolated Ellipticals and Groups	Proposal title
observer	Professor Gordon Garmire	Principal investigator
object	RXJ1119.7+2126	Source name
dtcycle	0	
cycle	P	events from which exps? Prim/Second/Both
ra_targ	169.932083	Observer's specified target RA [deg]
dec_targ	21.447222	Observer's specified target Dec [deg]
ra_nom	169.92251511714	Nominal RA [deg]
dec_nom	21.443457355538	Nominal Dec [deg]
roll_nom	212.98128787596	Nominal Roll [deg]
revision	3	Processing version of data
ontime	53037.899897993	Sum of GTIs [s]
livetime	52344.920689891	Livetime [s]
ontime3	53028.476947218	Sum of GTIs [s]
ontime5	53037.899897993	Sum of GTIs [s]
ontime6	53019.053966492	Sum of GTIs [s]
ontime7	53037.899897993	Sum of GTIs [s]
ontime8	53028.450800955	Sum of GTIs [s]
l2events	526946	Number of level 2 events



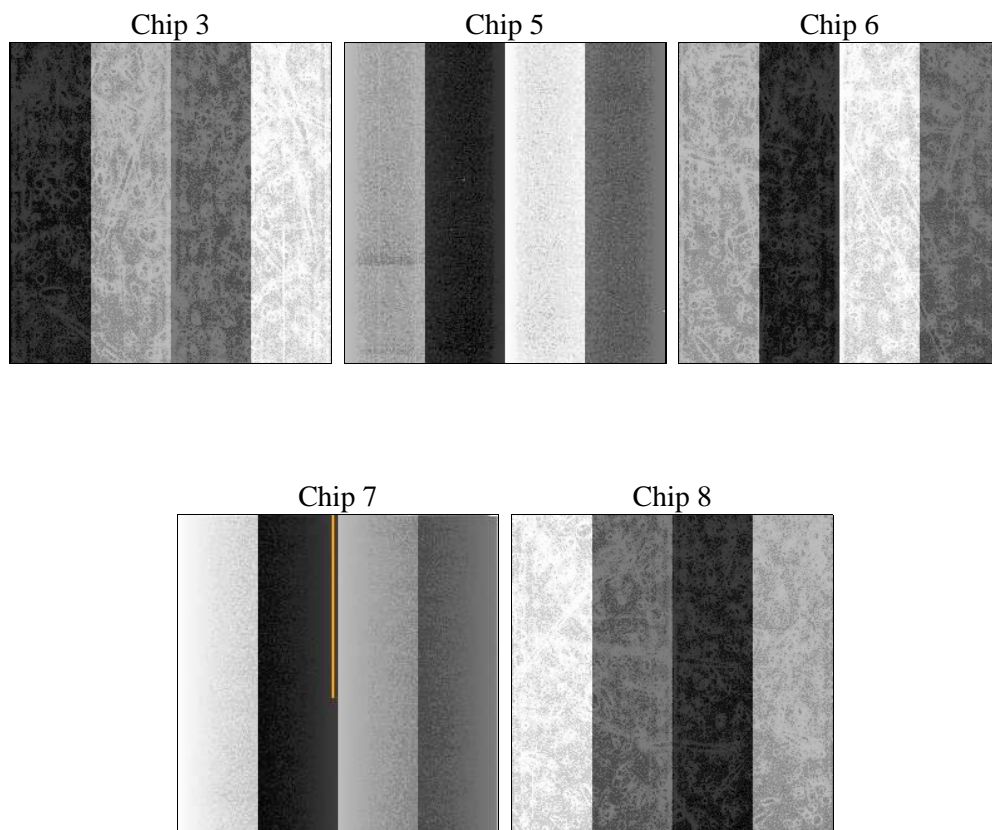
2 OBI

2.1 OBI

2.1.1 Images



2.1.2 Bias



2.1.3 Parameters

obi_num	0	Obi number	sched_exp_time	53000.000000	[s] Scheduled observation exposure time
ascdsver	8.5.1.1	Processing system revision	ontime	53037.899897993	Sum of GTIs [s]
caldbver	4.5.5	 	ontime3	53028.476947218	Sum of GTIs [s]
date	2012-12-21T00:41:11	Date and time of file creation	ontime5	53037.899897993	Sum of GTIs [s]
revision	3	Processing version of data	ontime6	53019.053966492	Sum of GTIs [s]
			ontime7	53037.899897993	Sum of GTIs [s]
			ontime8	53028.450800955	Sum of GTIs [s]
			l1events	1975952	Number of level 1 events

2.1.4 Events

	ccd 3	ccd 5	ccd 6	ccd 7	ccd 8
level 1 events	323168	507817	348072	371644	425251
rejected events	292925	228612	304265	201946	326450
rejected %	90%	45%	87%	54%	76%

	ccd 3	ccd 5	ccd 6	ccd 7	ccd 8
grade 0 events	10435	52940	19968	16207	30806
	3%	10%	5%	4%	7%
grade 1 events	172	914	238	318	270
	0%	0%	0%	0%	0%
grade 2 events	6545	76896	8189	34311	21722
	2%	15%	2%	9%	5%
grade 3 events	3639	14425	4098	15948	10656
	1%	2%	1%	4%	2%
grade 4 events	3496	14221	4015	16166	10102
	1%	2%	1%	4%	2%
grade 5 events	12818	37255	13567	39390	18914
	3%	7%	3%	10%	4%
grade 6 events	6128	120742	7540	87076	25516
	1%	23%	2%	23%	6%
grade 7 events	279935	190424	290457	162228	307265
	86%	37%	83%	43%	72%

2.2 Compared Parameters

Parameter	Planned	Actual	Parameter	Planned	Actual
Instrument	ACIS	ACIS	Obspar format version number	7	7
Detector	ACIS-35678	ACIS-35678	Obspar file type	PREDICTED	ACTUAL
Grating	NONE	NONE	Obspar update status	NONE	UPDATED
Data mode	VFAINT	VFAINT	Number of optional ACIS chips dropped	0	0
Observation mode	POINTING	POINTING	On-chip summing requested	N	N
[deg] Pointing RA	169.935445	169.9225151171352	Subarray requested	NONE	NONE
[deg] Pointing Dec	21.467882	21.4434573555379	Alternating exposures requested	N	N
[deg] Pointing Roll	212.819931	212.9812878759597	[s] Primary exposure time	0.000000	3.1
[mm] SIM focus pos	-0.684267	-0.6828225247311905			
[mm] SIM defocus	0	0.001444936568705701			
[mm] SIM translation stage pos	-190.132523	-190.1425803651734			
[mm] SIM translation stage offset	0	0.01005778216563158			
[s] Observation start time (MET)	228120245.184000	228119266.71238			
Observation start date	2005-03-25T06:43:01	2005-03-25T06:27:46			
[s] Observation end time (MET)	228173245.184000	228173919.71486			
Observation end date	2005-03-25T21:26:21	2005-03-25T21:38:39			
Read mode	TIMED	TIMED			

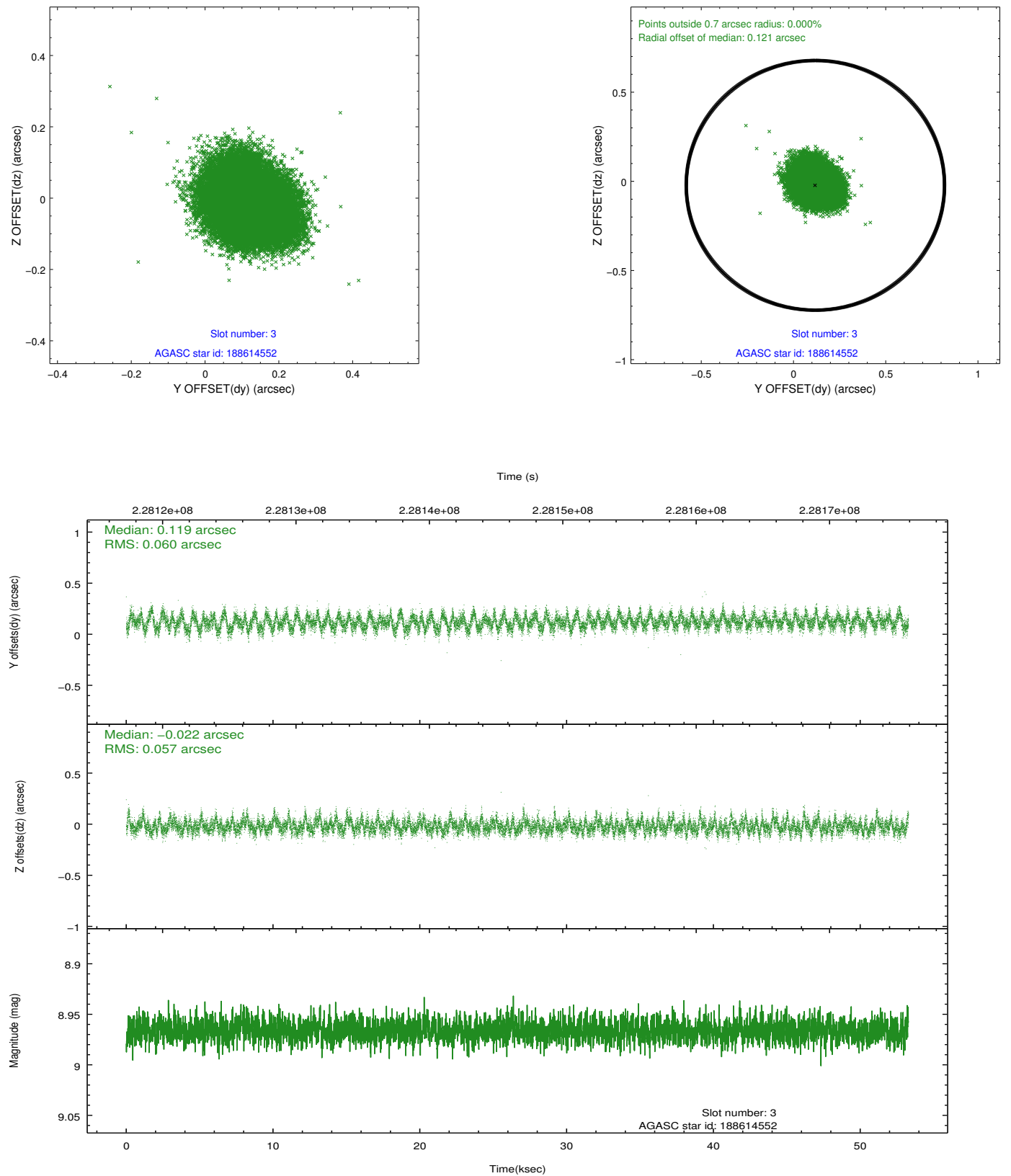
2.3 Aspect

Slot Statistics

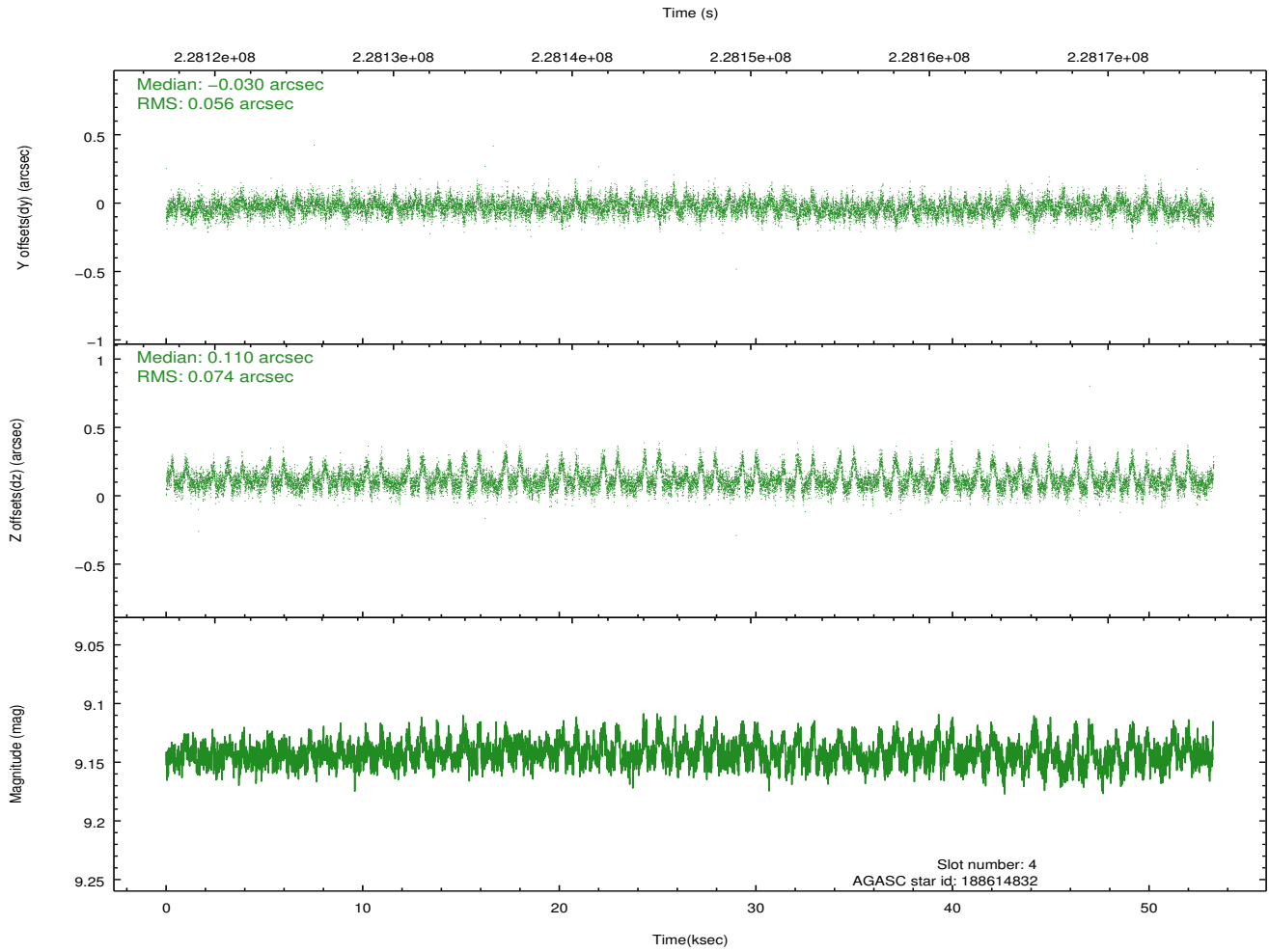
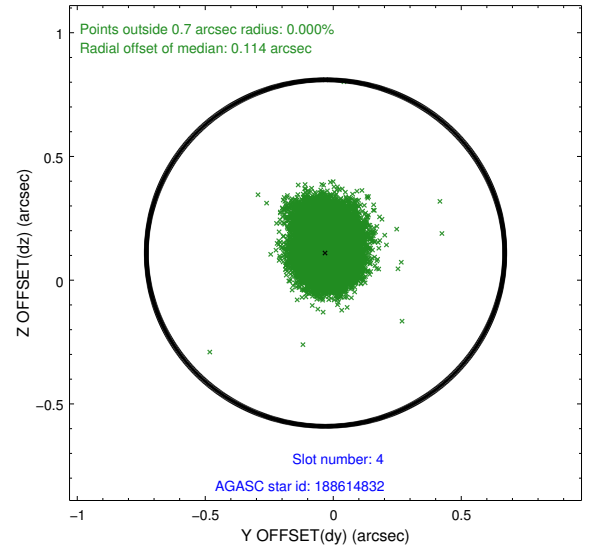
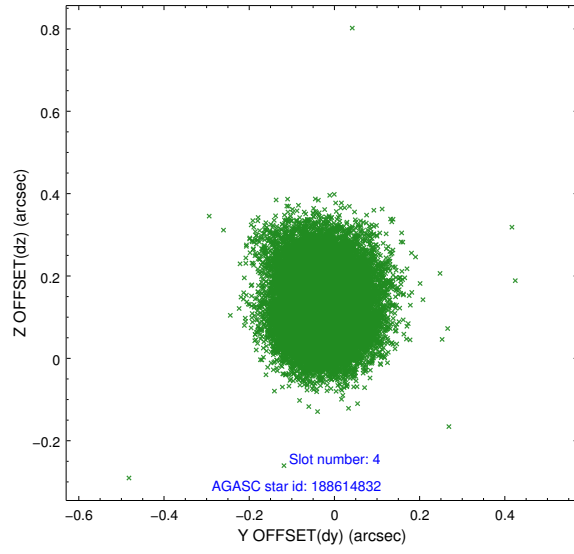
slot	status	id	mag	n_pts	med_dy	med_dz	dr1	dr2	ra	dec	mean_y	mean_z
0	FID	ACIS-S-2	7.10	12995	-0.042	-0.034	0.013	0.020	0.000000	0.000000	-760.18	-1730.84
1	FID	ACIS-S-4	7.21	12996	0.100	0.029	0.011	0.018	0.000000	0.000000	2153.21	177.79
2	FID	ACIS-S-5	7.24	12996	-0.089	0.013	0.010	0.016	0.000000	0.000000	-1813.14	171.34
3	GUIDE	188614552	8.97	25982	0.119	-0.022	0.089	0.142	169.490657	21.468678	1250.15	-811.68
4	GUIDE	188614832	9.14	25978	-0.030	0.110	0.094	0.168	170.375801	21.987686	-2250.17	-777.45
5	GUIDE	188619848	10.11	25905	0.077	0.052	0.189	0.307	169.714439	21.950506	-321.37	-1860.25
6	GUIDE	188622880	7.59	25991	-0.064	-0.070	0.070	0.113	170.025103	21.913955	-1121.70	-1187.14
7	GUIDE	188623472	7.07	25991	-0.098	-0.075	0.058	0.091	169.895324	20.725289	1562.57	2173.54

2.4 Star Slots

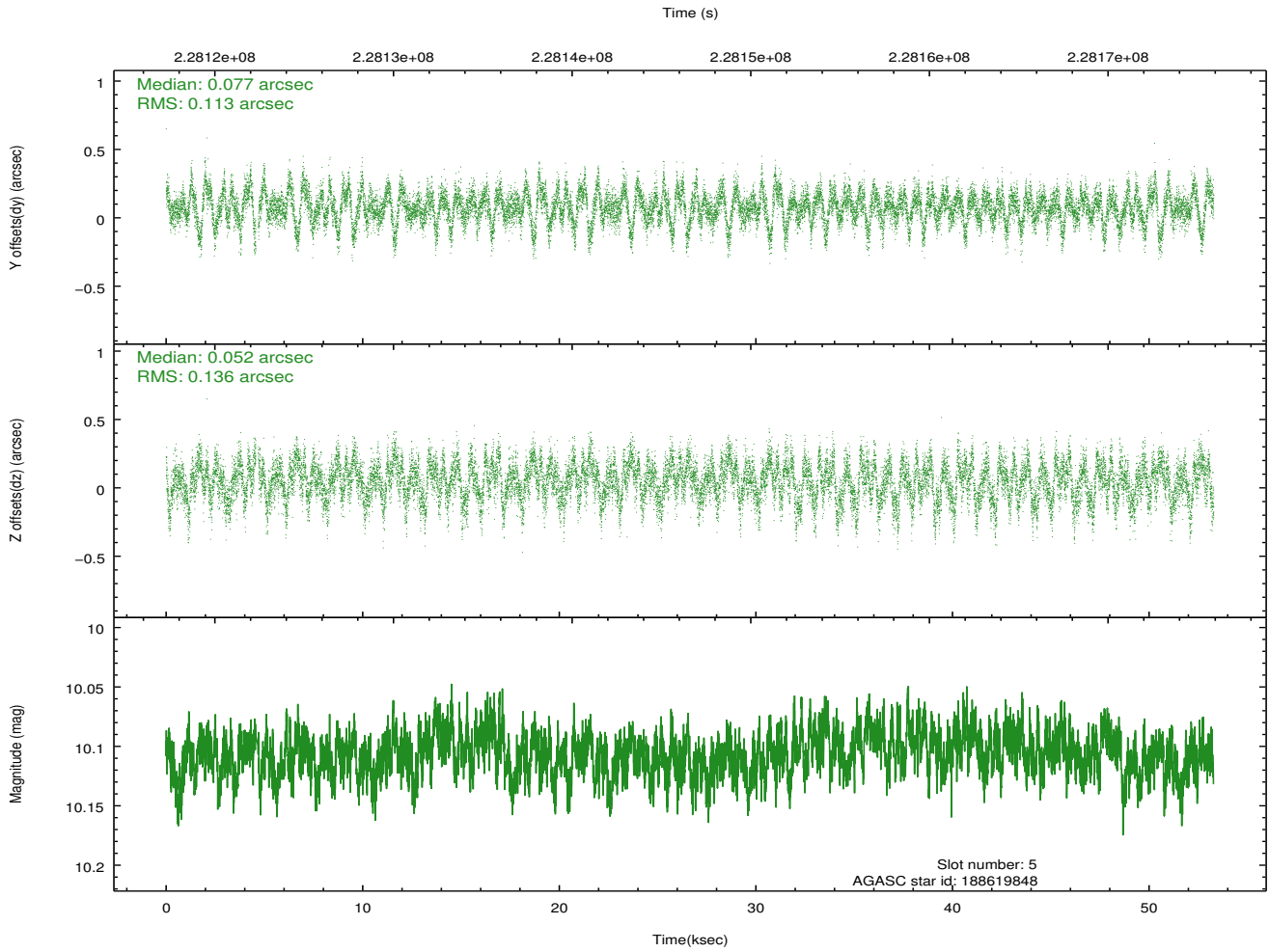
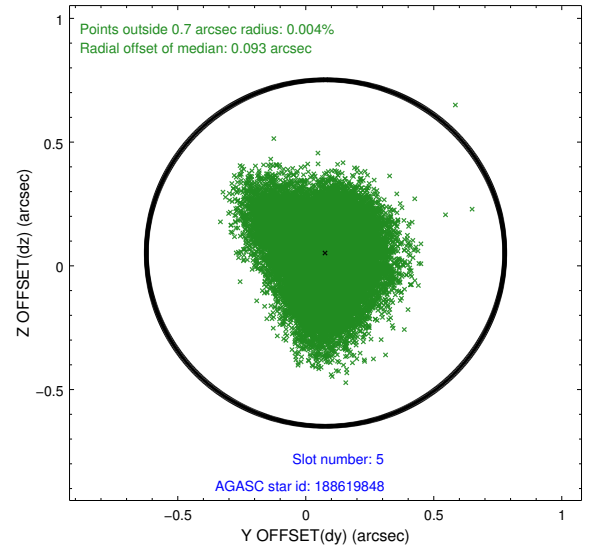
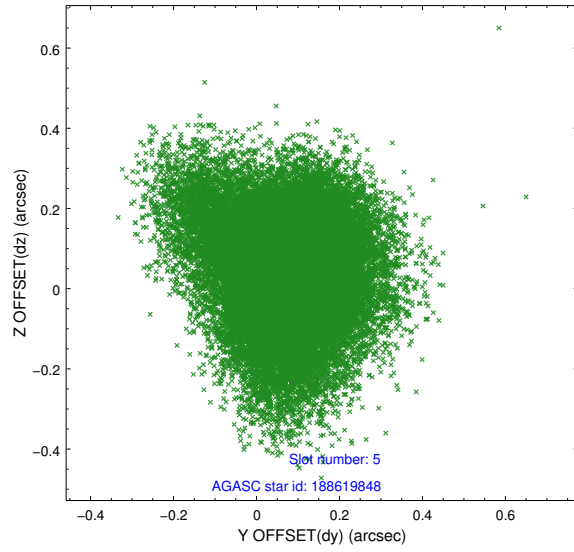
2.4.1 Slot 3



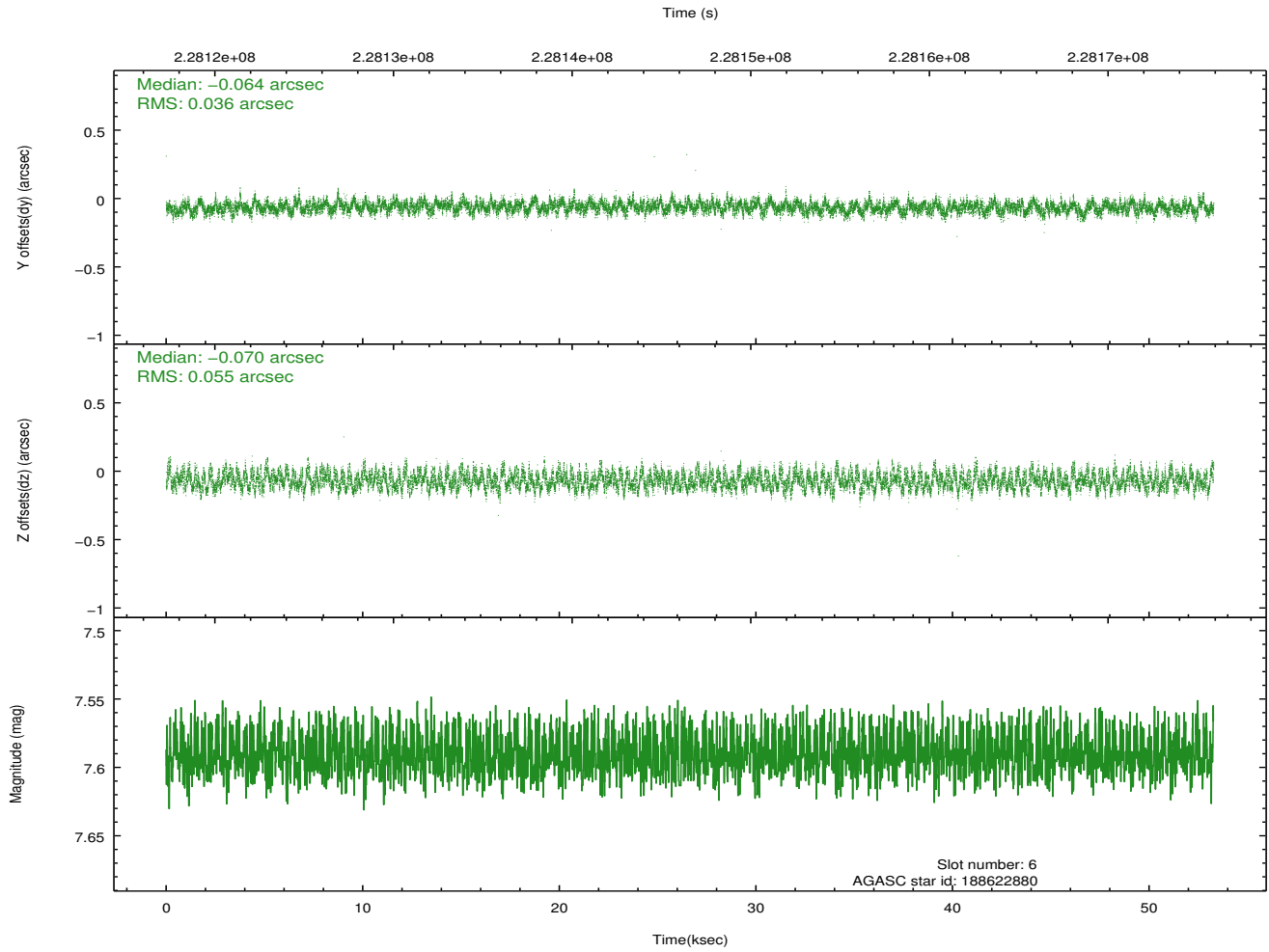
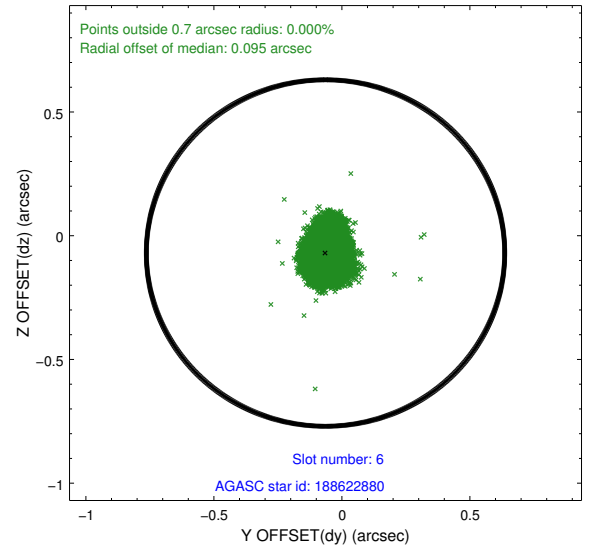
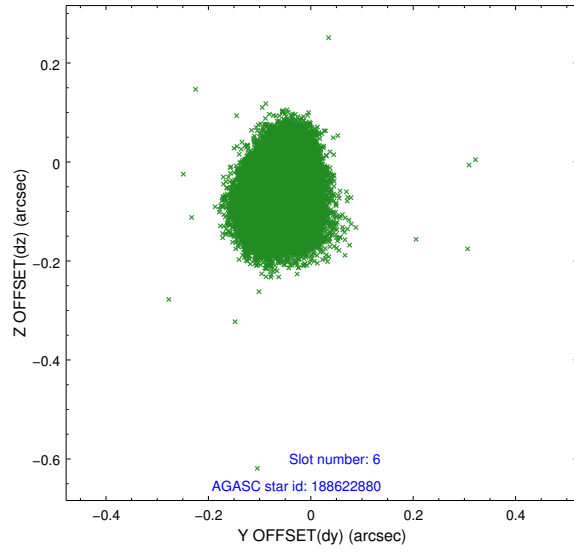
2.4.2 Slot 4



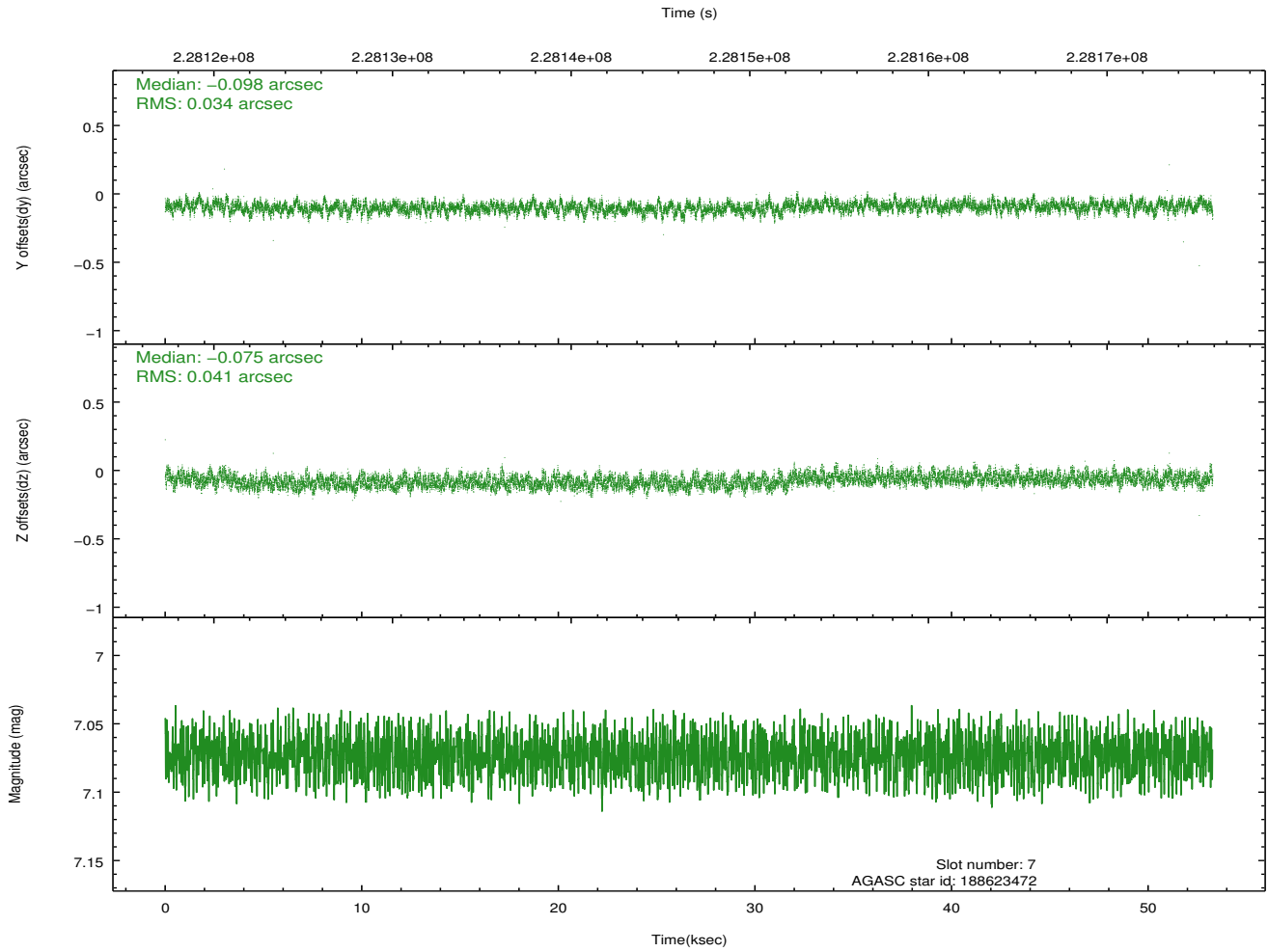
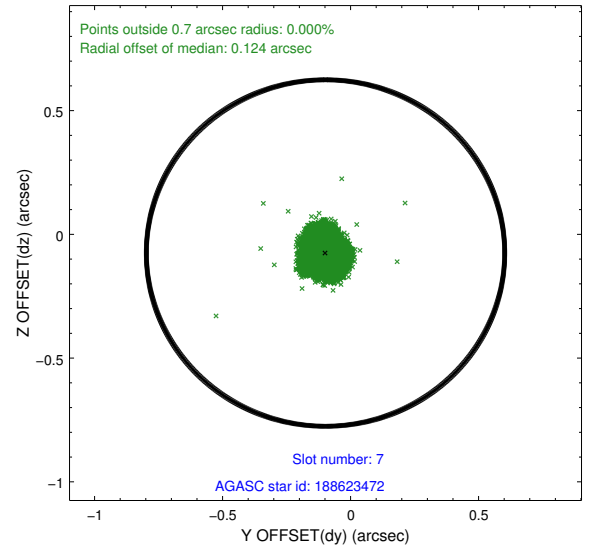
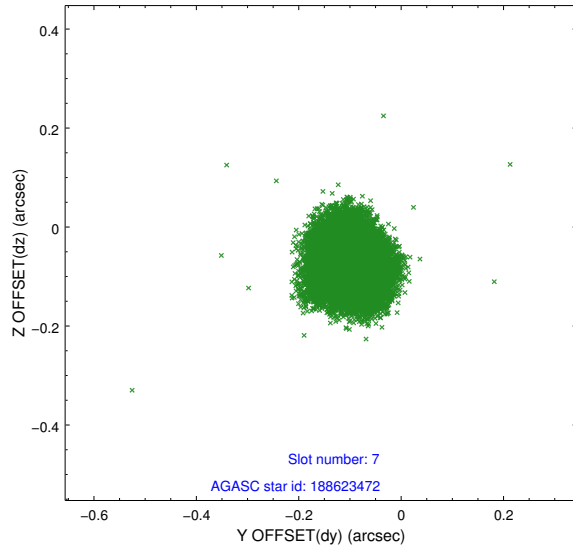
2.4.3 Slot 5



2.4.4 Slot 6

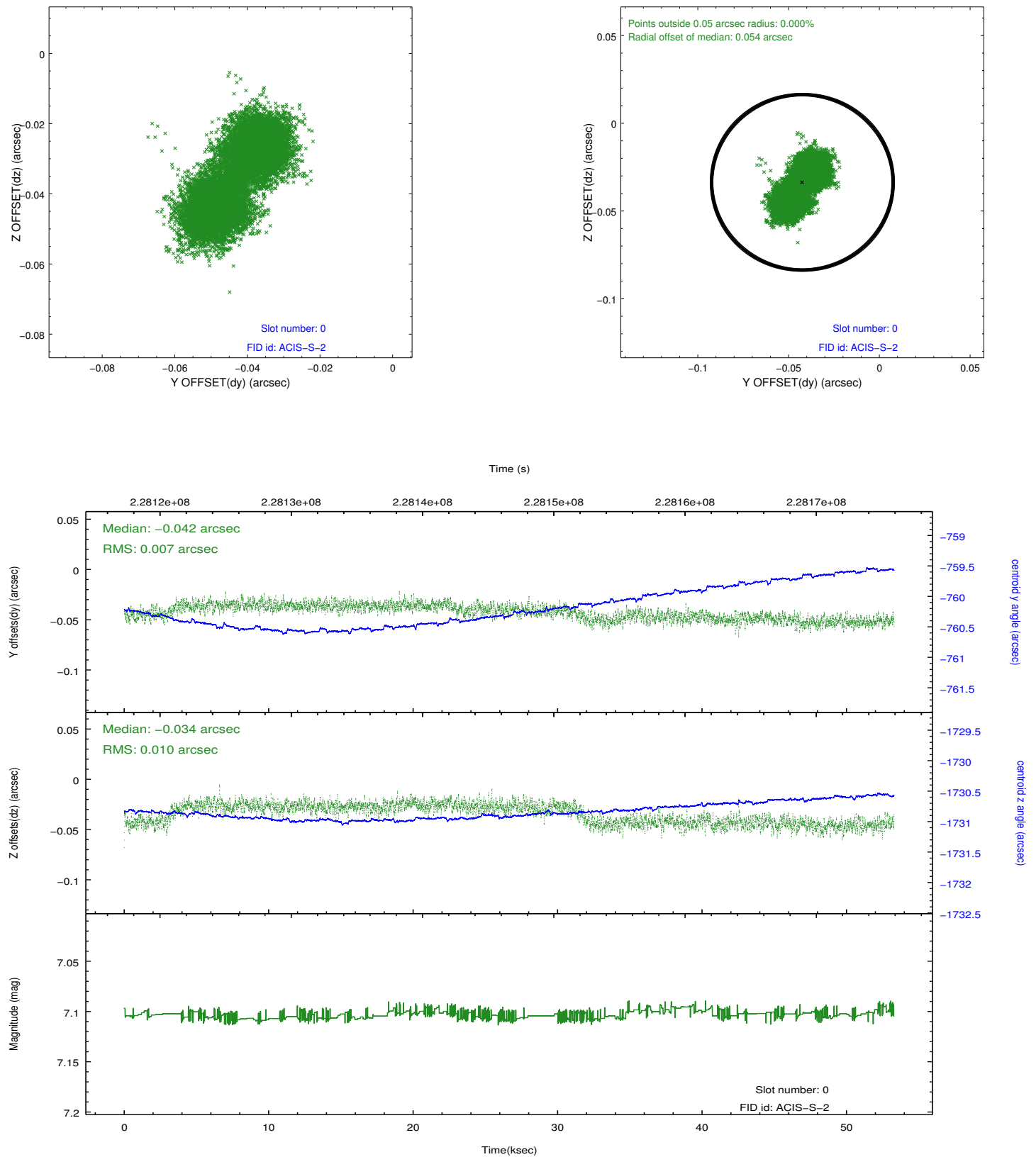


2.4.5 Slot 7

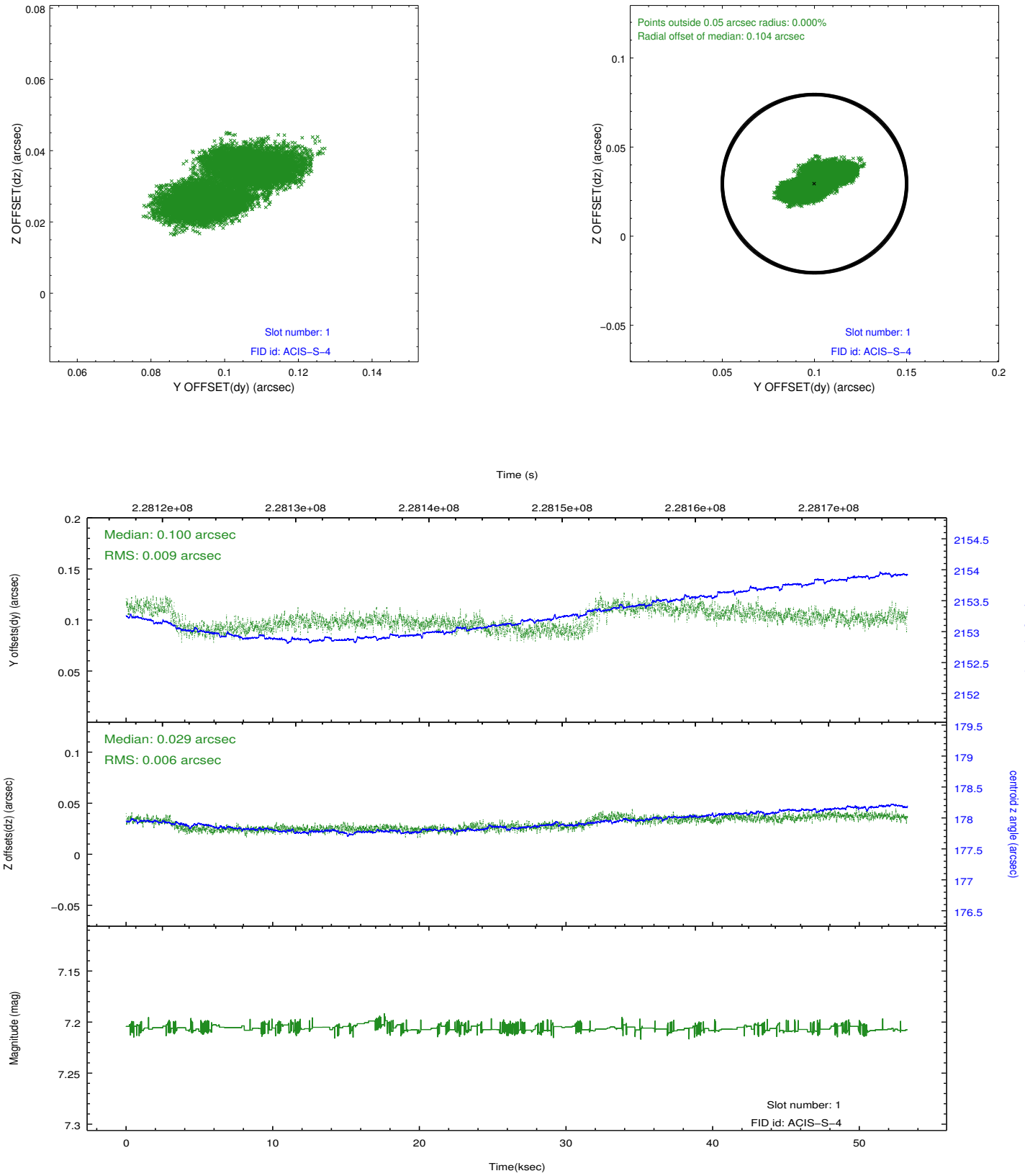


2.5 FID Slots

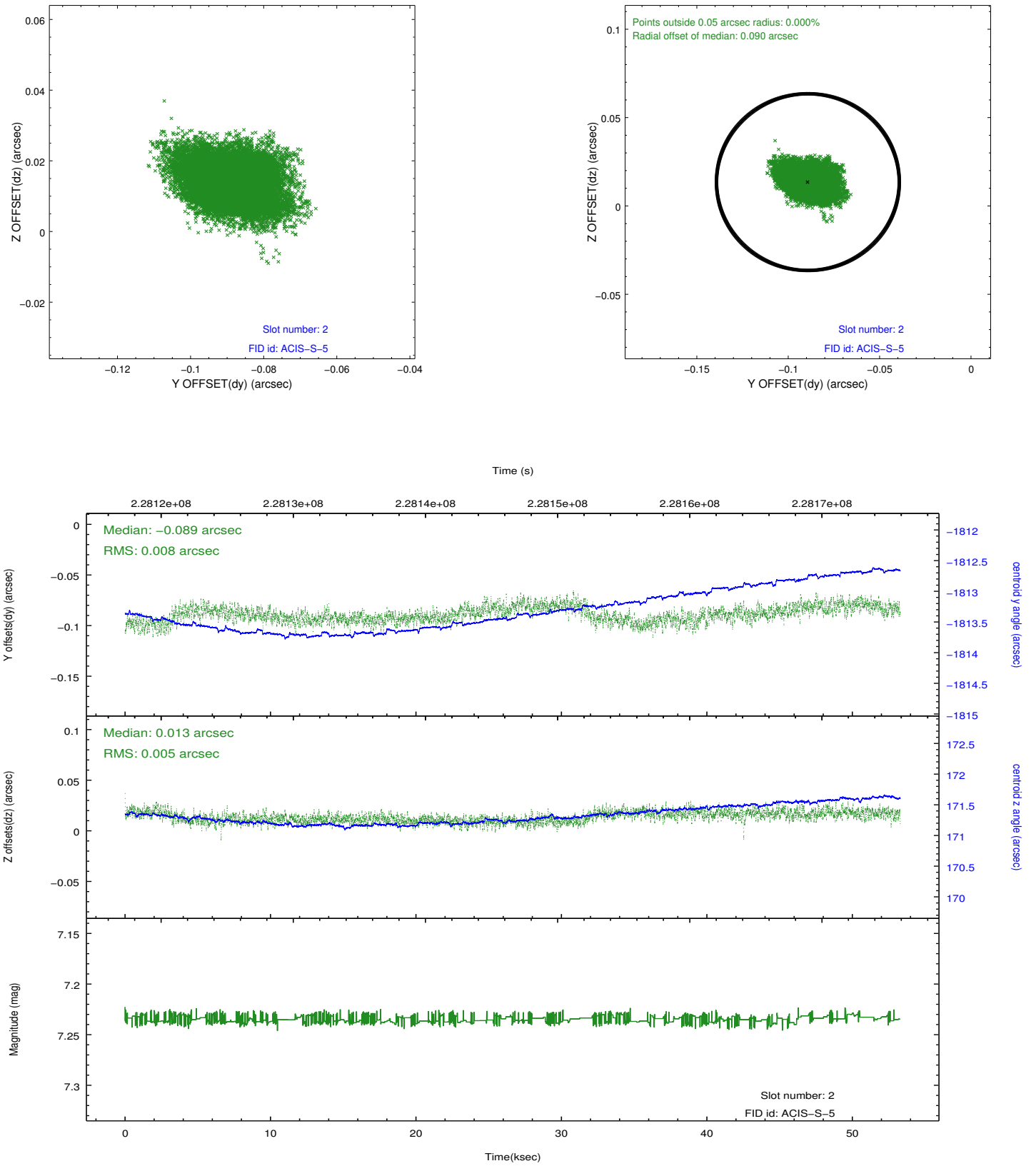
2.5.1 Slot 0



2.5.2 Slot 1



2.5.3 Slot 2



A Summary

A.1 Status

V&V Scientist	Beth Sundheim
V&V Date (YYYY-MM-DD)	2013.01.14
V&V Edition	1
V&V Disposition and Status	OK
V&V Charge Time	53.03789

A.2 Comments