

V&V Reference Report

L2 ASCDS Version : 7.6.7.1

Observation 5790 - L2 Version 002
Chandra X-Ray Center

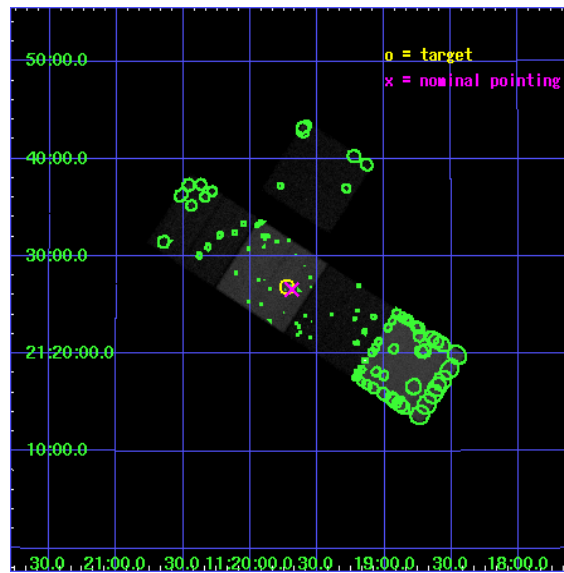
L2 Processing Date : Mar 17 2006

Contents

1	Front	2
2	OBI	3
2.1	OBI	3
2.1.1	Images	3
2.1.2	Bias	3
2.1.3	Parameters	4
2.1.4	Events	4
2.2	Compared Parameters	5
2.3	Aspect	6
2.4	Star Slots	9
2.4.1	Slot 3	9
2.4.2	Slot 4	10
2.4.3	Slot 5	11
2.4.4	Slot 6	12
2.4.5	Slot 7	13
2.5	FID Slots	14
2.5.1	Slot 0	14
2.5.2	Slot 1	15
2.5.3	Slot 2	16
3	Point Sources	17
A	Summary	18
A.1	Status	18
A.2	Comments	18

1 Front

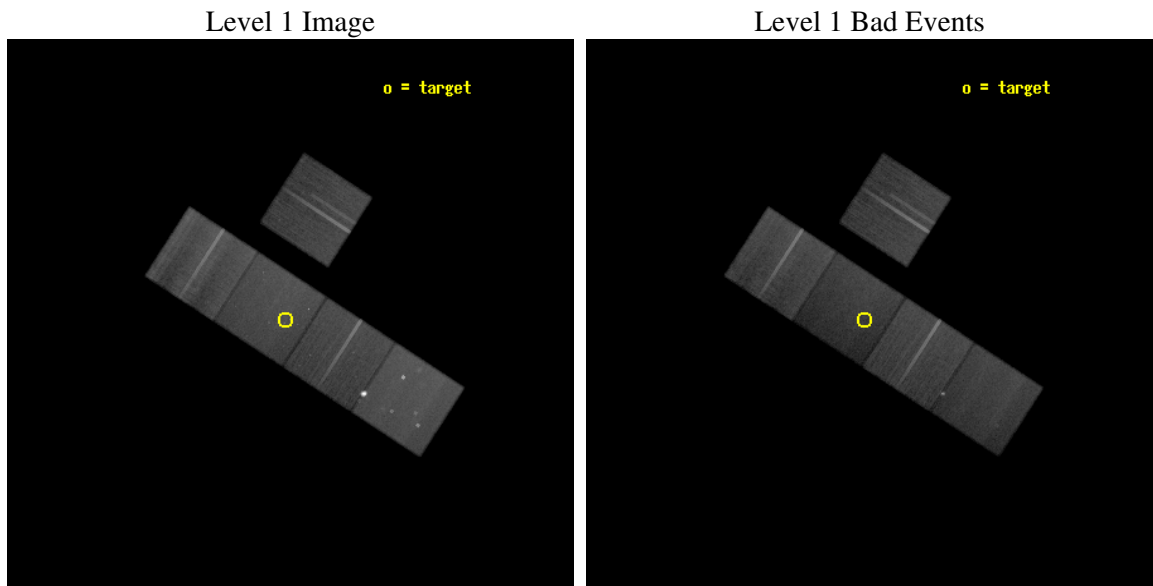
seq_num	800503
obs_id	5790
title	Dark Matter in Isolated Ellipticals and Groups
observer	Prof. Gordon Garmire
object	RXJ1119.7+2126
dtcycle	0
cycle	P
ra_targ	169.932083
dec_targ	21.447222
ra_nom	169.92254019779
dec_nom	21.443472412566
roll_nom	212.98127870031
revision	2
ontime	53037.899898022
livetime	52344.920689921
ontime3	53028.476947248
ontime5	53037.899898022
ontime6	53019.053966522
ontime7	53037.899898022
ontime8	53028.476907492
l2events	509910



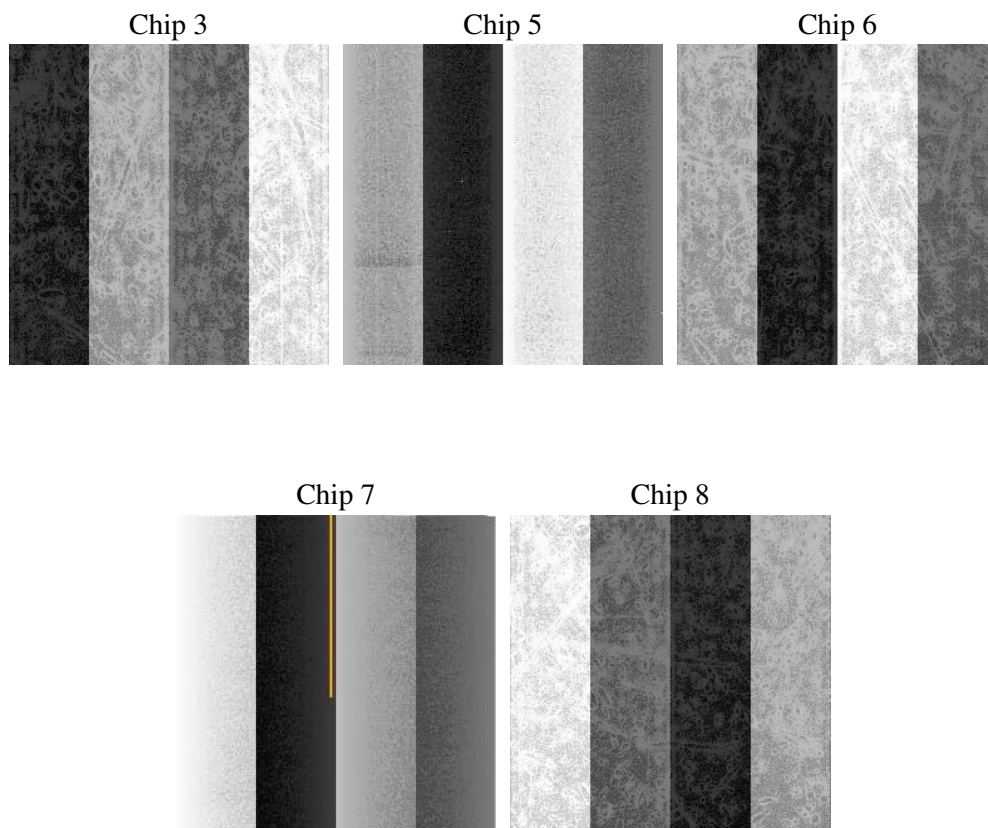
2 OBI

2.1 OBI

2.1.1 Images



2.1.2 Bias



2.1.3 Parameters

obi_num	0
ascdsver	7.6.7.1
caldbver	3.2.1
date	2006-03-17T16:16:33
revision	2

sched_exp_time	53000.000000
ontime	53042.28487727
ontime3	53032.861906588
ontime5	53042.28487727
ontime6	53023.43894577
ontime7	53042.28487727
ontime8	53032.86188674
l1events	1975952

2.1.4 Events

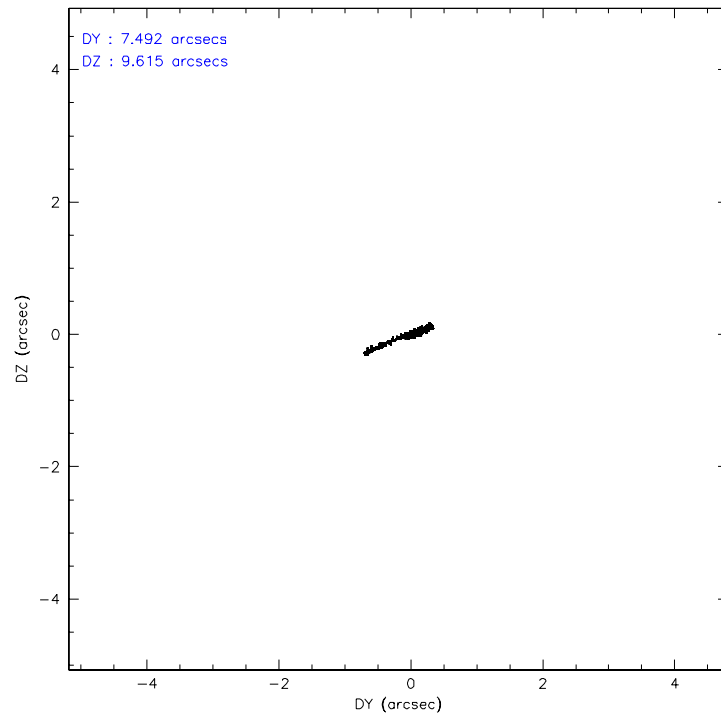
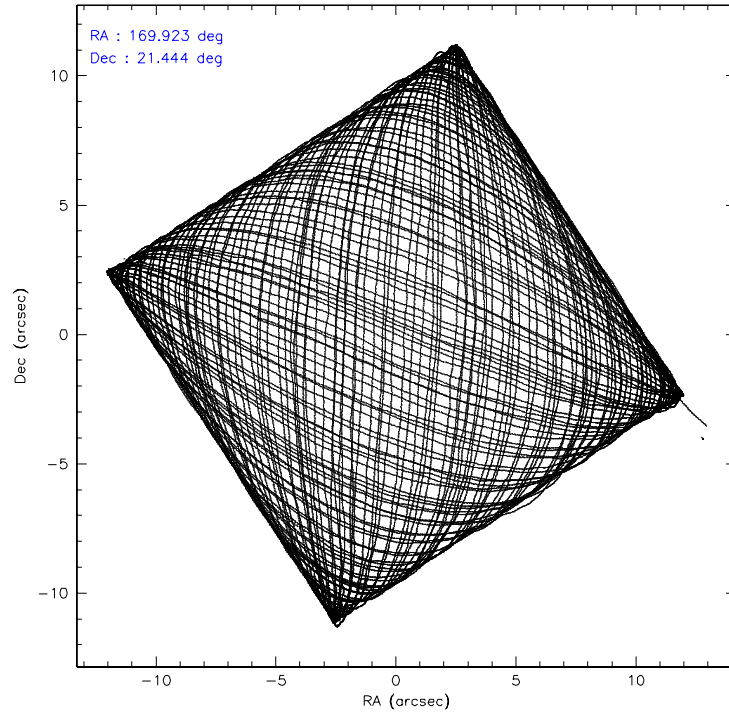
	ccd 3	ccd 5	ccd 6	ccd 7	ccd 8
level 1 events	323168	507817	348072	371644	425251
rejected events	292926	236539	304267	213946	326449
rejected %	90%	46%	87%	57%	76%

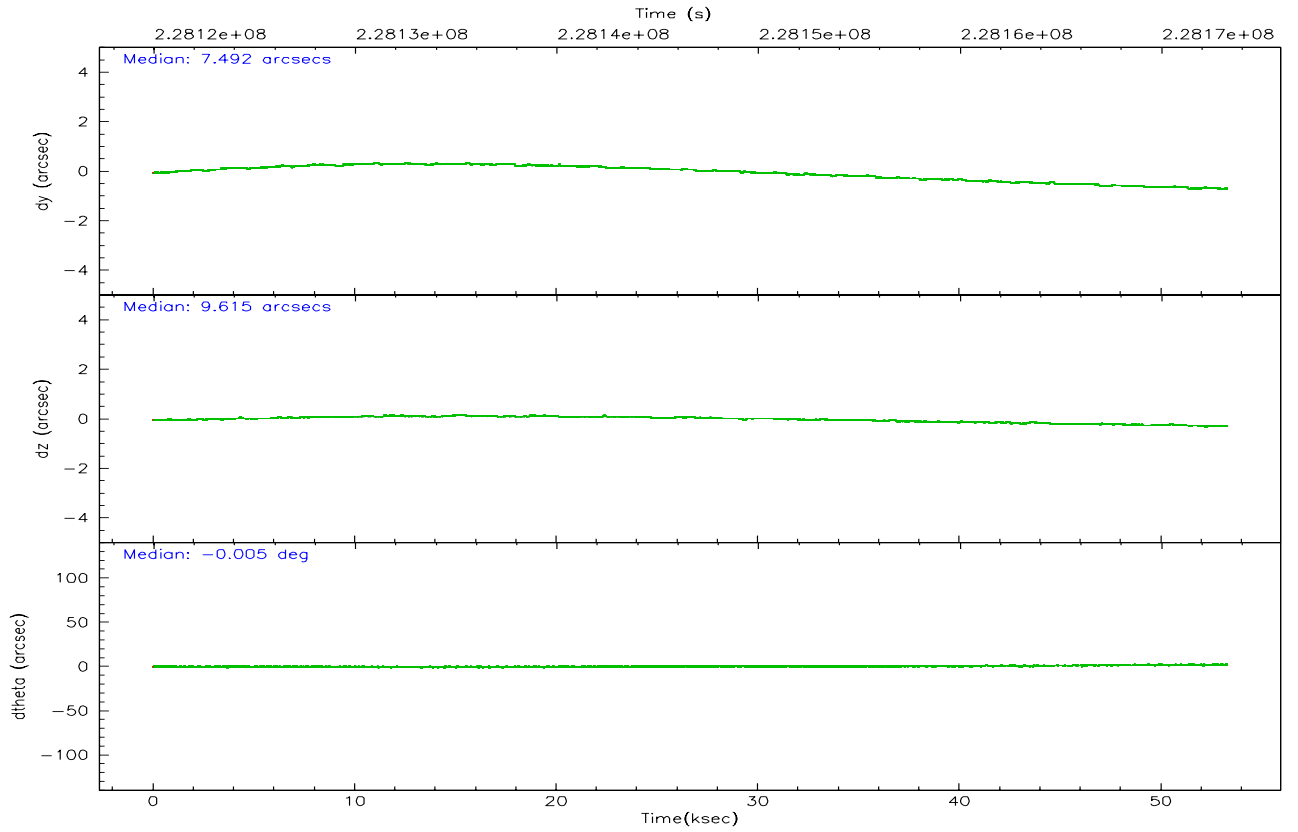
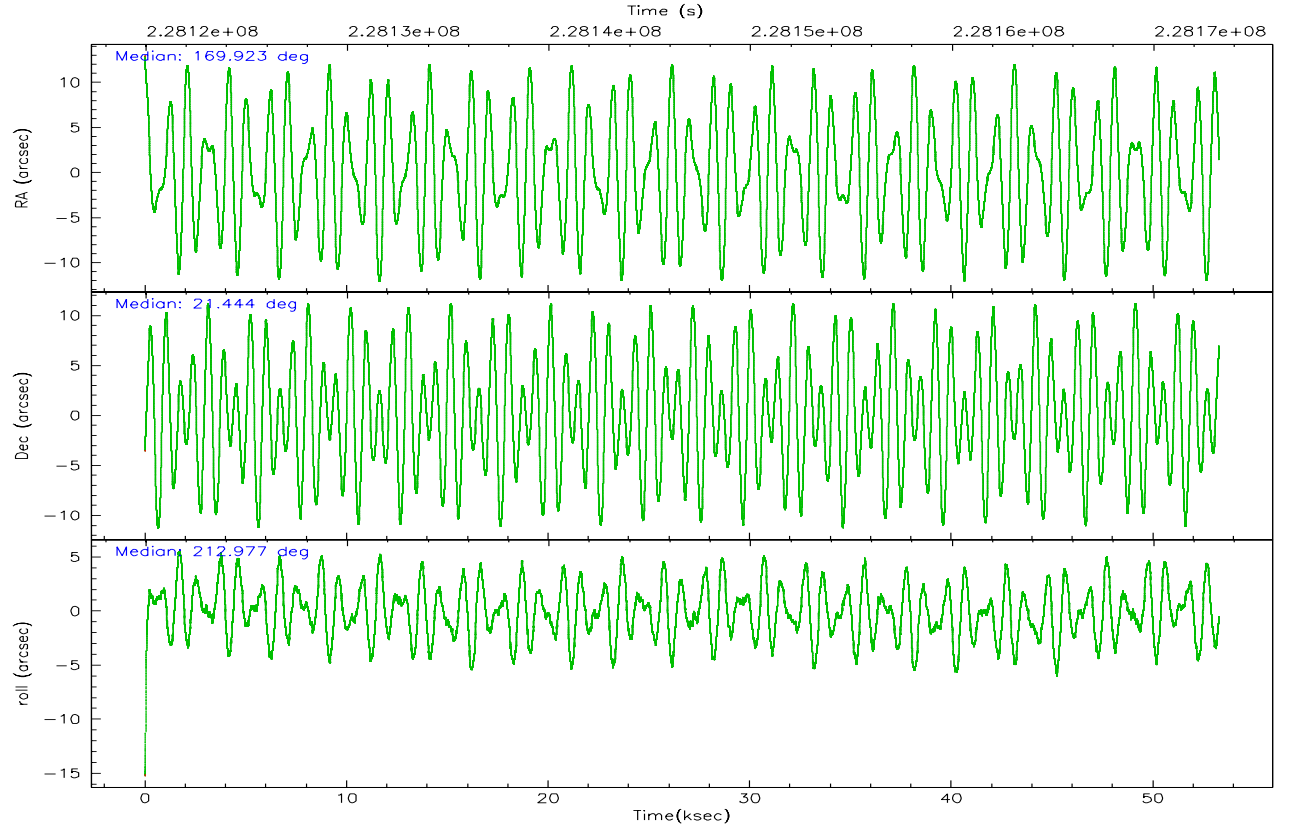
	ccd 3	ccd 5	ccd 6	ccd 7	ccd 8
grade 0 events	10435	42447	19966	10461	30803
	3%	8%	5%	2%	7%
grade 1 events	172	613	238	186	270
	0%	0%	0%	0%	0%
grade 2 events	6545	83145	8191	38909	21725
	2%	16%	2%	10%	5%
grade 3 events	3639	9060	4098	9300	10656
	1%	1%	1%	2%	2%
grade 4 events	3494	8786	4015	9163	10099
	1%	1%	1%	2%	2%
grade 5 events	12815	24859	13564	28641	18909
	3%	4%	3%	7%	4%
grade 6 events	6129	127890	7539	89883	25520
	1%	25%	2%	24%	6%
grade 7 events	279939	211017	290461	185101	307269
	86%	41%	83%	49%	72%

2.2 Compared Parameters

Parameter	Planned	Actual	Parameter	Planned	Actual
Instrument	ACIS	ACIS	Obspar format version number	6	6
Detector	ACIS-35678	ACIS-35678	Obspar file type	PREDICTED	ACTUAL
Grating	NONE	NONE	Obspar update status	NONE	UPDATED
Data mode	VFAINT	VFAINT	On-chip summing requested	N	N
Observation mode	POINTING	POINTING	Subarray requested	NONE	NONE
Pointing RA	169.935445	169.9225401977906	Alternating exposures requested	N	N
Pointing Dec	21.467882	21.44347241256615	Primary exposure time	0.000000	3.1
Pointing Roll	212.819931	212.9812787003141			
SIM focus pos (mm)	-0.684267	-0.6828225247311905			
SIM defocus (mm)	0	0.001444936568705701			
SIM translation stage pos (mm)	-190.132523	-190.1425803651734			
SIM translation stage offset (mm)	0	0.01005778216563158			
Observation start time	228120245.184000	228119266.71238			
Observation start date	2005-03-25T06:43:01	2005-03-25T06:27:46			
Observation end time	228173245.184000	228173919.71486			
Observation end date	2005-03-25T21:26:21	2005-03-25T21:38:39			
Read mode	TIMED	TIMED			

2.3 Aspect



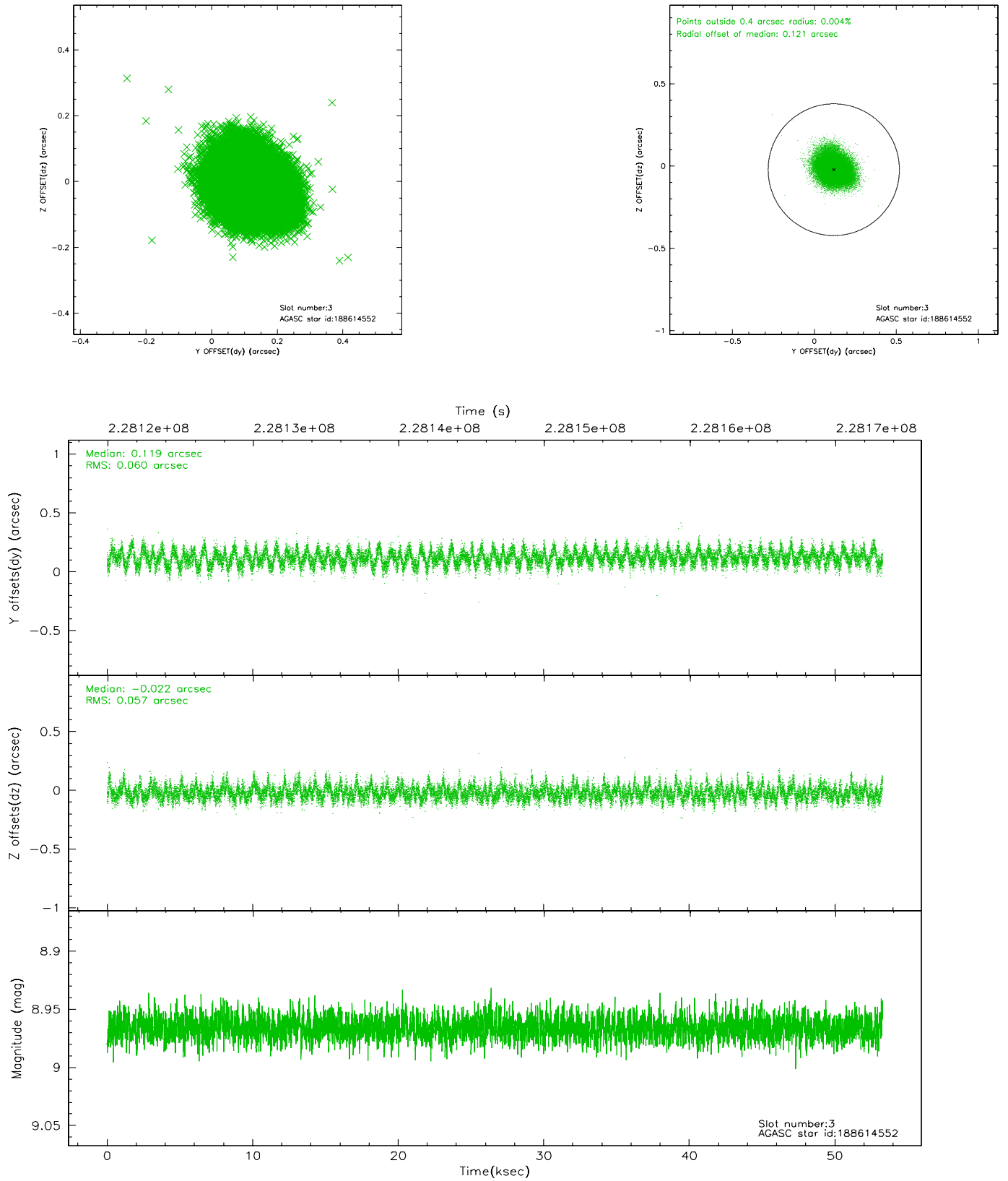


Slot Statistics

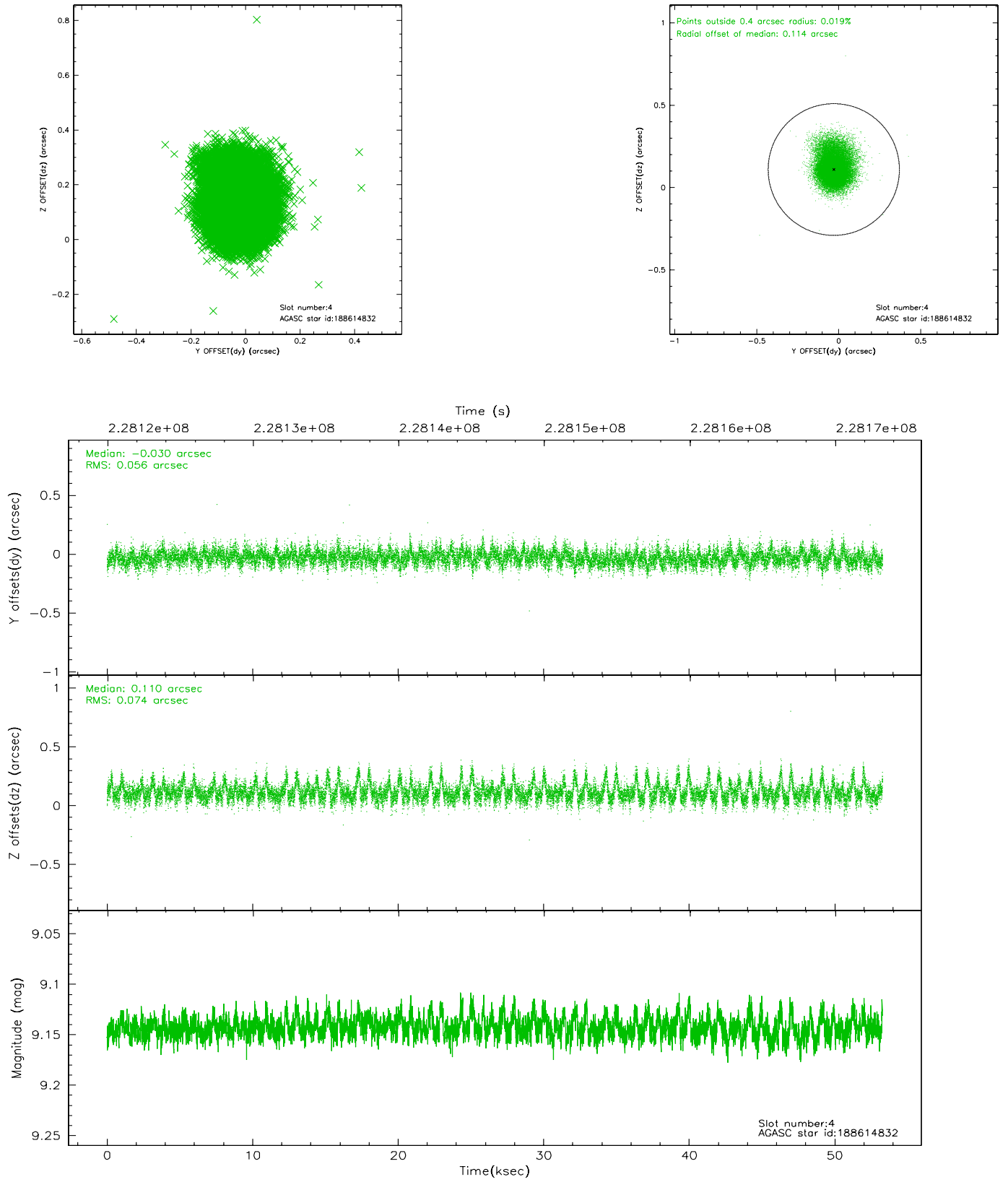
slot	status	id	mag	n_pts	med_dy	med_dz	dr1	dr2	ra	dec	mean_y	mean_z
0	FID	ACIS-S-2	7.10	12995	-0.031	-0.010	0.013	0.019	0.000000	0.000000	-760.17	-1730.79
1	FID	ACIS-S-4	7.21	12996	0.058	0.018	0.010	0.017	0.000000	0.000000	2153.17	177.80
2	FID	ACIS-S-5	7.24	12996	-0.059	0.002	0.009	0.015	0.000000	0.000000	-1813.11	171.35
3	GUIDE	188614552	8.97	25982	0.119	-0.022	0.089	0.142	169.490657	21.468678	1250.15	-811.68
4	GUIDE	188614832	9.14	25978	-0.030	0.110	0.094	0.168	170.375801	21.987686	-2250.17	-777.45
5	GUIDE	188619848	10.11	25905	0.077	0.052	0.189	0.307	169.714439	21.950506	-321.37	-1860.25
6	GUIDE	188622880	7.59	25991	-0.064	-0.070	0.070	0.113	170.025103	21.913955	-1121.70	-1187.14
7	GUIDE	188623472	7.07	25991	-0.098	-0.075	0.058	0.091	169.895324	20.725289	1562.57	2173.54

2.4 Star Slots

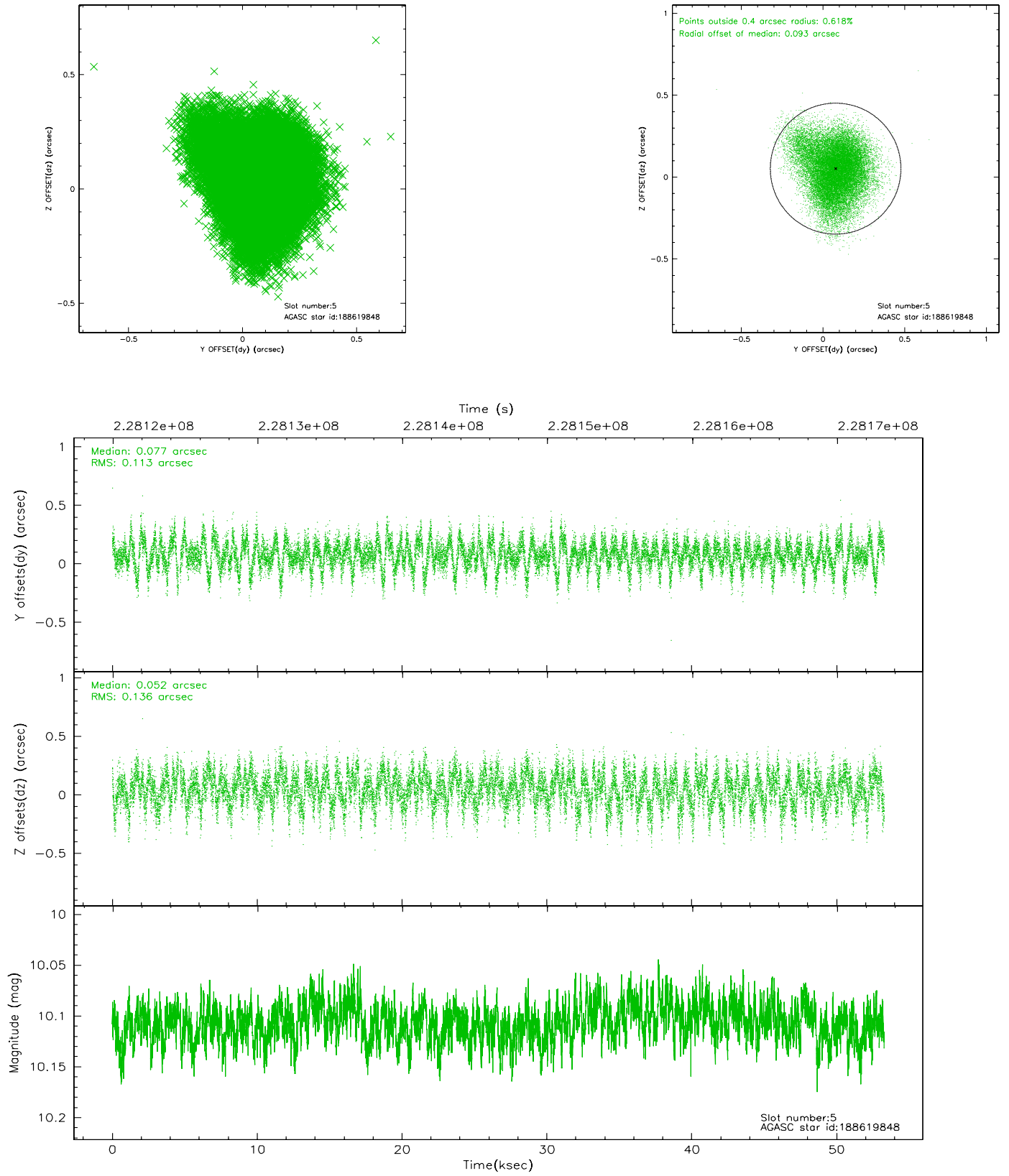
2.4.1 Slot 3



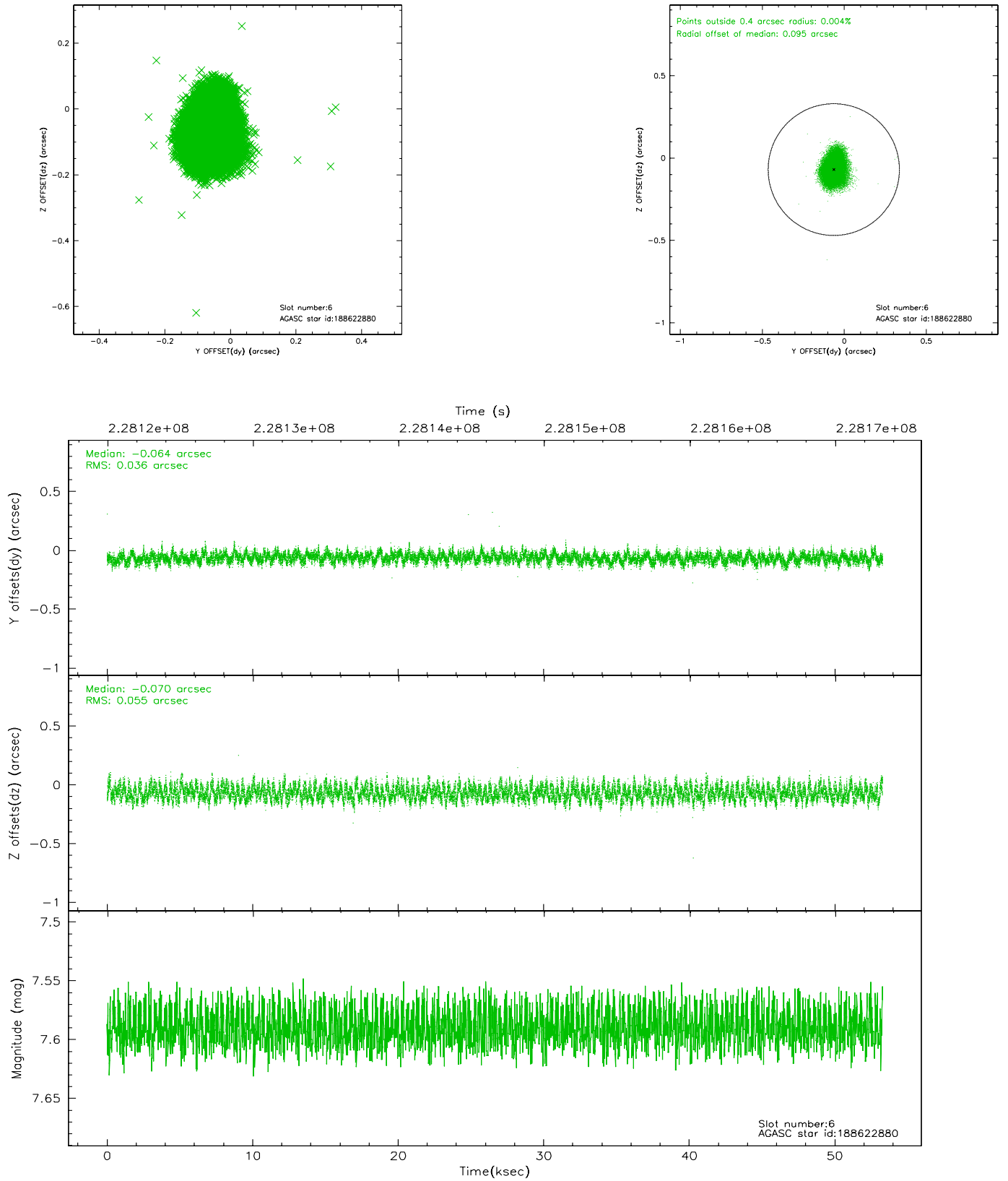
2.4.2 Slot 4



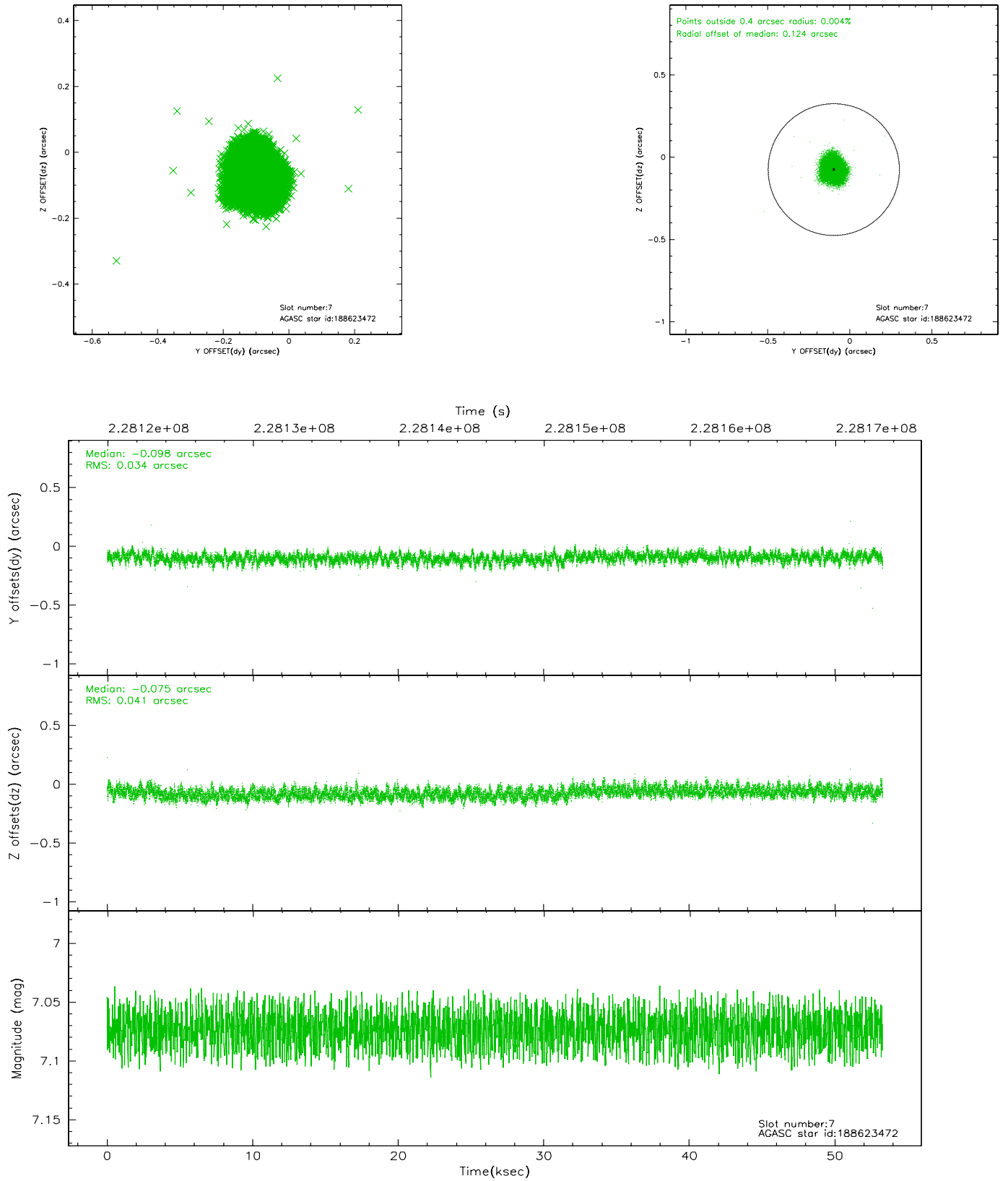
2.4.3 Slot 5



2.4.4 Slot 6

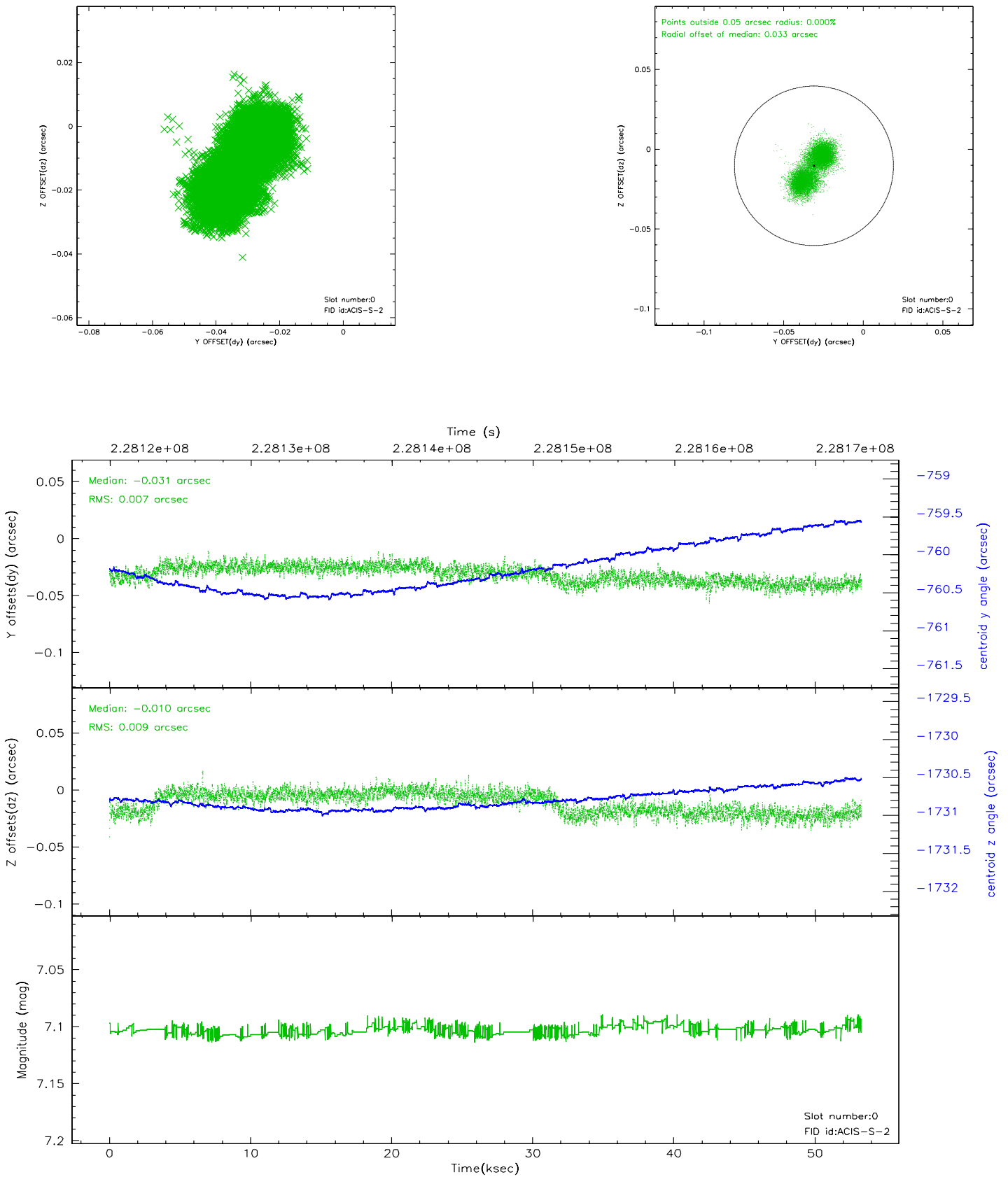


2.4.5 Slot 7

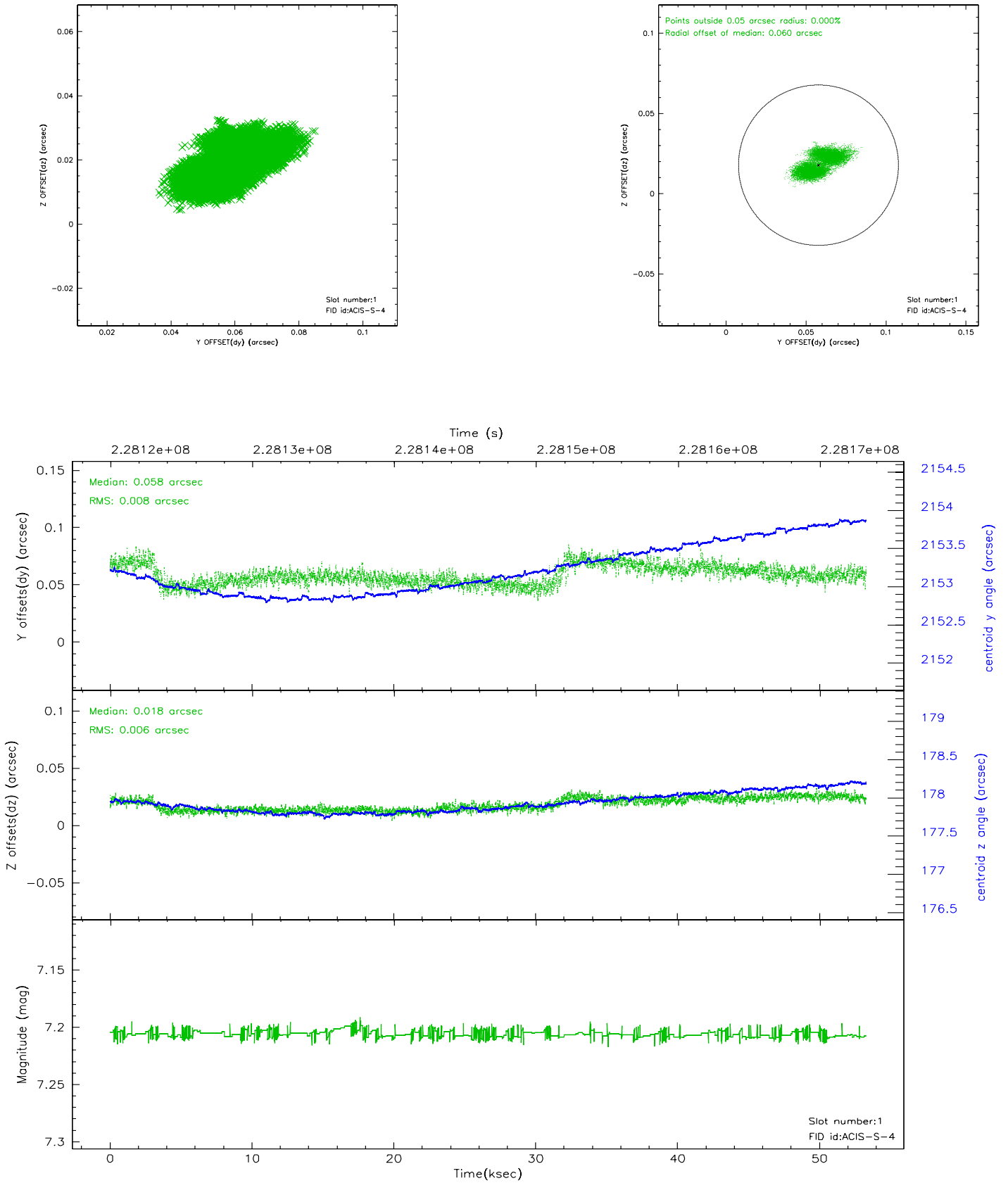


2.5 FID Slots

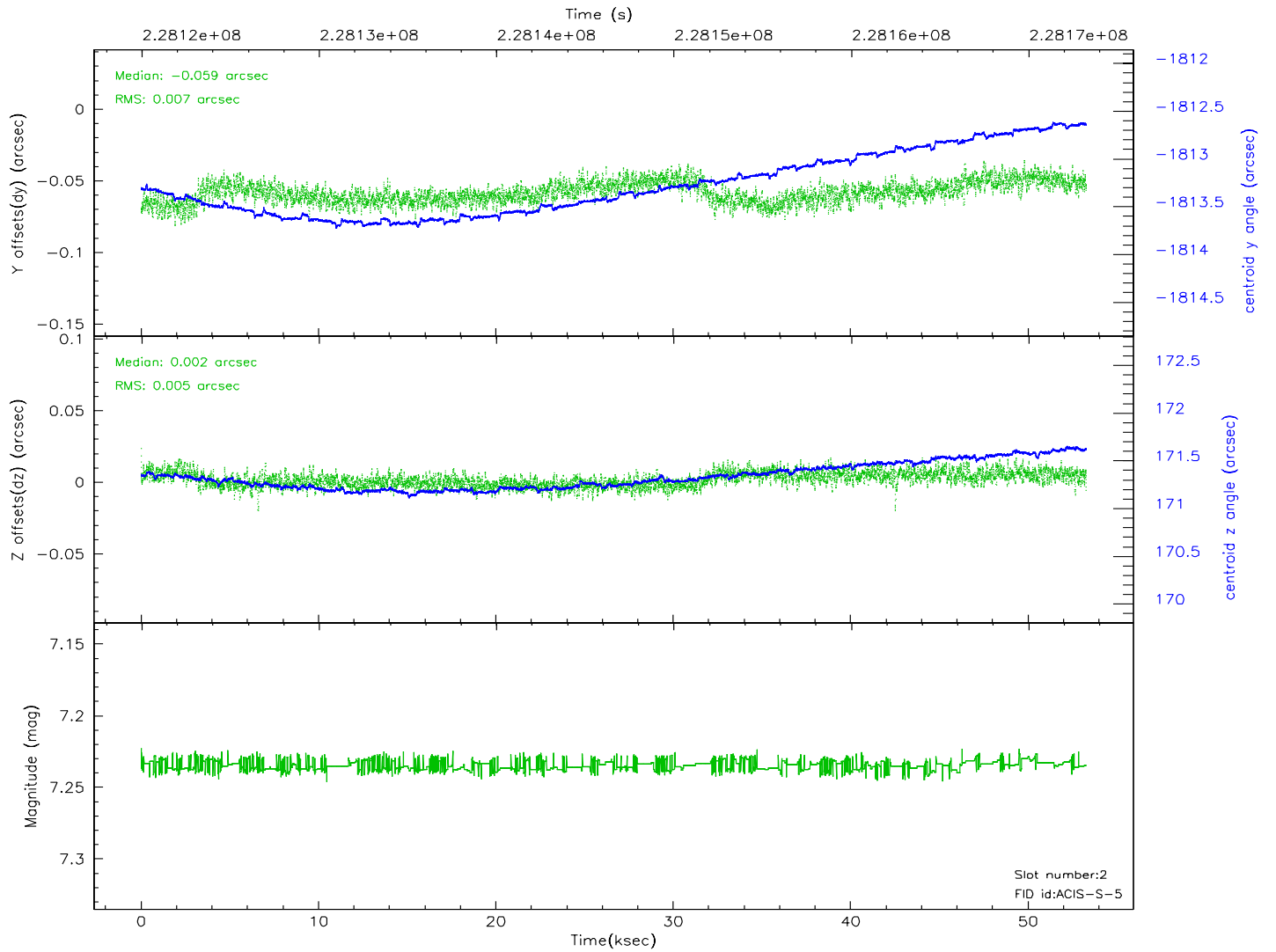
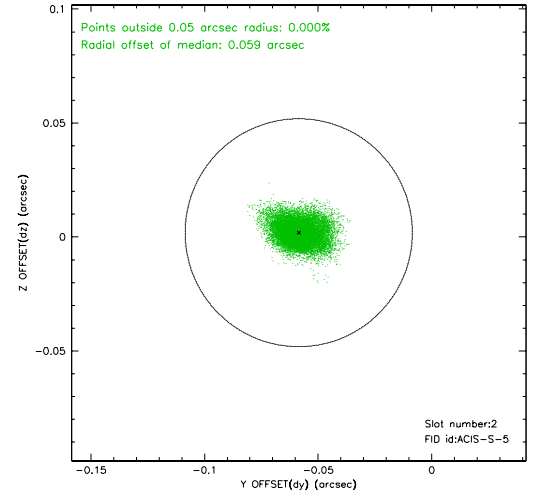
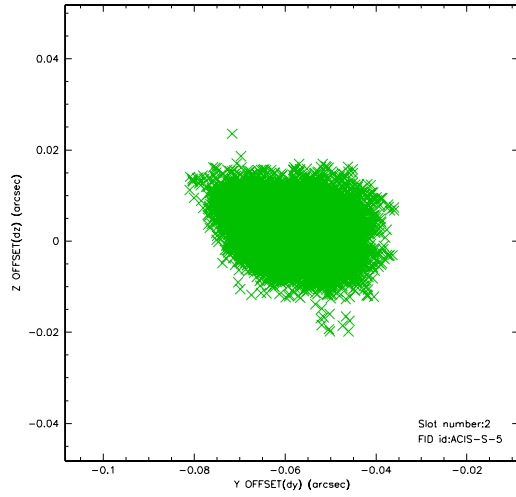
2.5.1 Slot 0



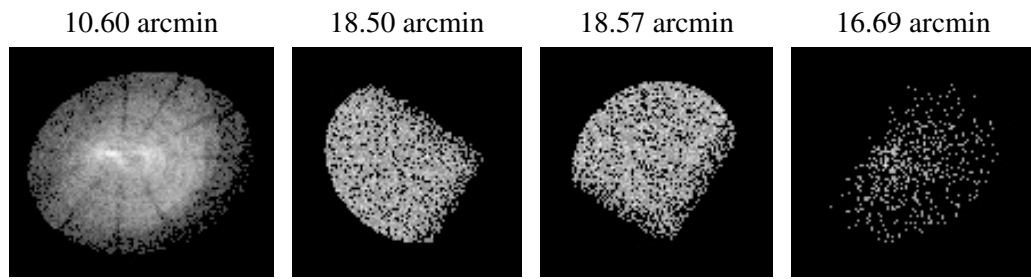
2.5.2 Slot 1



2.5.3 Slot 2



3 Point Sources



A Summary

A.1 Status

V&V Scientist	Beth Sundheim
V&V Date (YYYY-MM-DD)	2006.03.17
V&V Edition	1
V&V Disposition and Status	OK
V&V Charge Time	53.03789

A.2 Comments