

V&V Reference Report

L2 ASCDS Version : 8.5.1.1

Observation 5775 - L2 Version 3
Chandra X-Ray Center

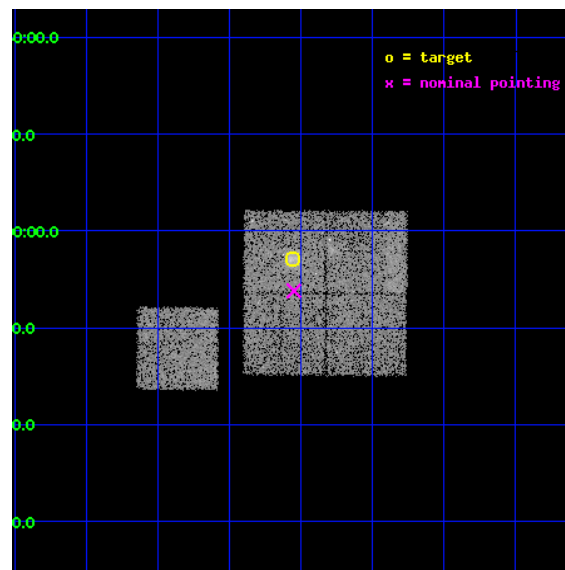
L2 Processing Date : Dec 20 2012

Contents

1	Front	2
2	OBI	3
2.1	OBI	3
2.1.1	Images	3
2.1.2	Bias	3
2.1.3	Parameters	4
2.1.4	Events	4
2.2	Compared Parameters	5
2.3	Aspect	6
2.4	Star Slots	9
2.4.1	Slot 3	9
2.4.2	Slot 4	10
2.4.3	Slot 5	11
2.4.4	Slot 6	12
2.4.5	Slot 7	13
2.5	FID Slots	14
2.5.1	Slot 0	14
2.5.2	Slot 1	15
2.5.3	Slot 2	16
A	Summary	17
A.1	Status	17
A.2	Comments	17

1 Front

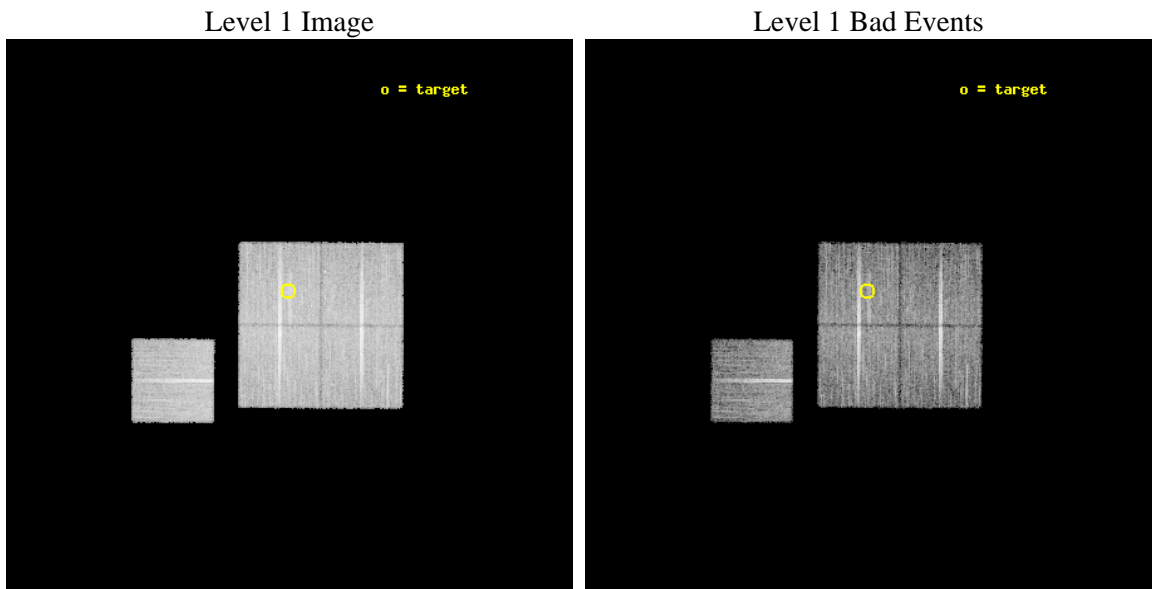
seq_num	800488	Sequence number
obs_id	5775	Observation id
title	Chandra observations of high-redshift clusters of galaxies from the 400 Square Degrees ROSAT PSPC survey	Proposal title
observer	Dr. Stephen Murray	Principal investigator
object	cl0318-0302	Source name
dtcycle	0	
cycle	P	events from which exps? Prim/Second/Both
ra_targ	49.639167	Observer's specified target RA [deg]
dec_targ	-3.048889	Observer's specified target Dec [deg]
ra_nom	49.637560002957	Nominal RA [deg]
dec_nom	-3.1032055299925	Nominal Dec [deg]
roll_nom	270.37663212481	Nominal Roll [deg]
revision	3	Processing version of data
ontime	14770.450670898	Sum of GTIs [s]
livetime	14577.463859035	Livetime [s]
ontime0	14776.609531194	Sum of GTIs [s]
ontime1	14773.509610951	Sum of GTIs [s]
ontime2	14773.550650954	Sum of GTIs [s]
ontime3	14770.450670898	Sum of GTIs [s]
ontime6	14776.568491191	Sum of GTIs [s]
l2events	42609	Number of level 2 events



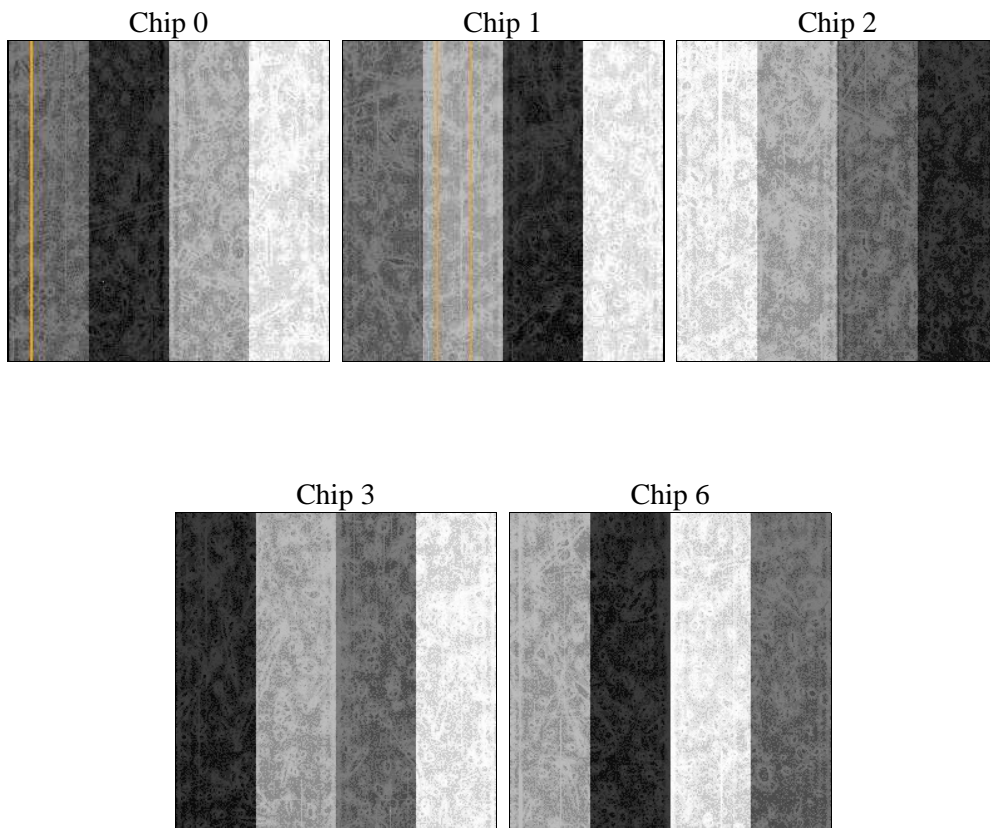
2 OBI

2.1 OBI

2.1.1 Images



2.1.2 Bias



2.1.3 Parameters

obi_num	1	Obi number	sched_exp_time	15000.000000	[s] Scheduled observation exposure time
ascdsver	8.5.1.1	Processing system revision	ontime	14770.450670898	Sum of GTIs [s]
caldsver	4.5.5	 	ontime0	14776.609531194	Sum of GTIs [s]
date	2012-12-20T15:44:57	Date and time of file creation	ontime1	14773.509610951	Sum of GTIs [s]
revision	3	Processing version of data	ontime2	14773.550650954	Sum of GTIs [s]
			ontime3	14770.450670898	Sum of GTIs [s]
			ontime6	14776.568491191	Sum of GTIs [s]
			l1events	450610	Number of level 1 events

2.1.4 Events

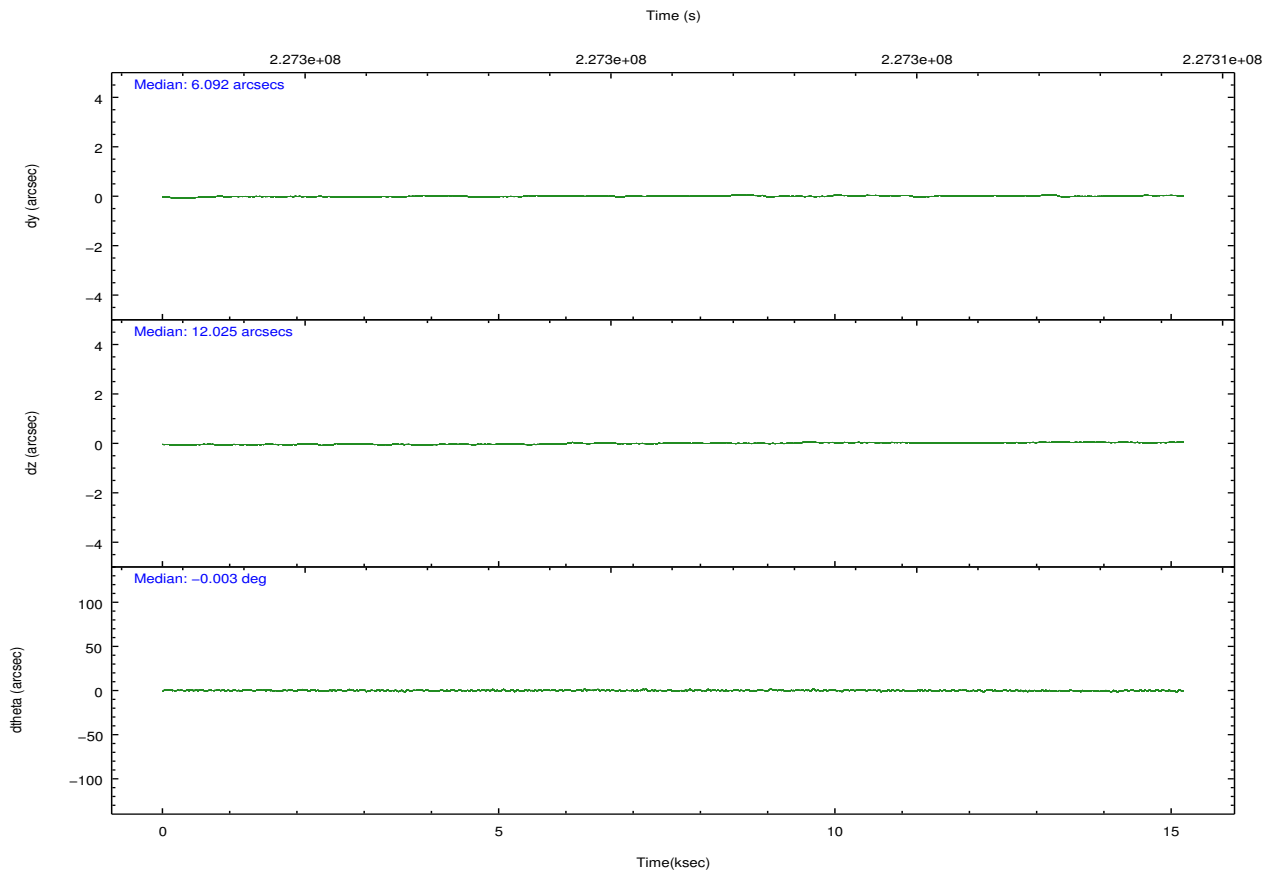
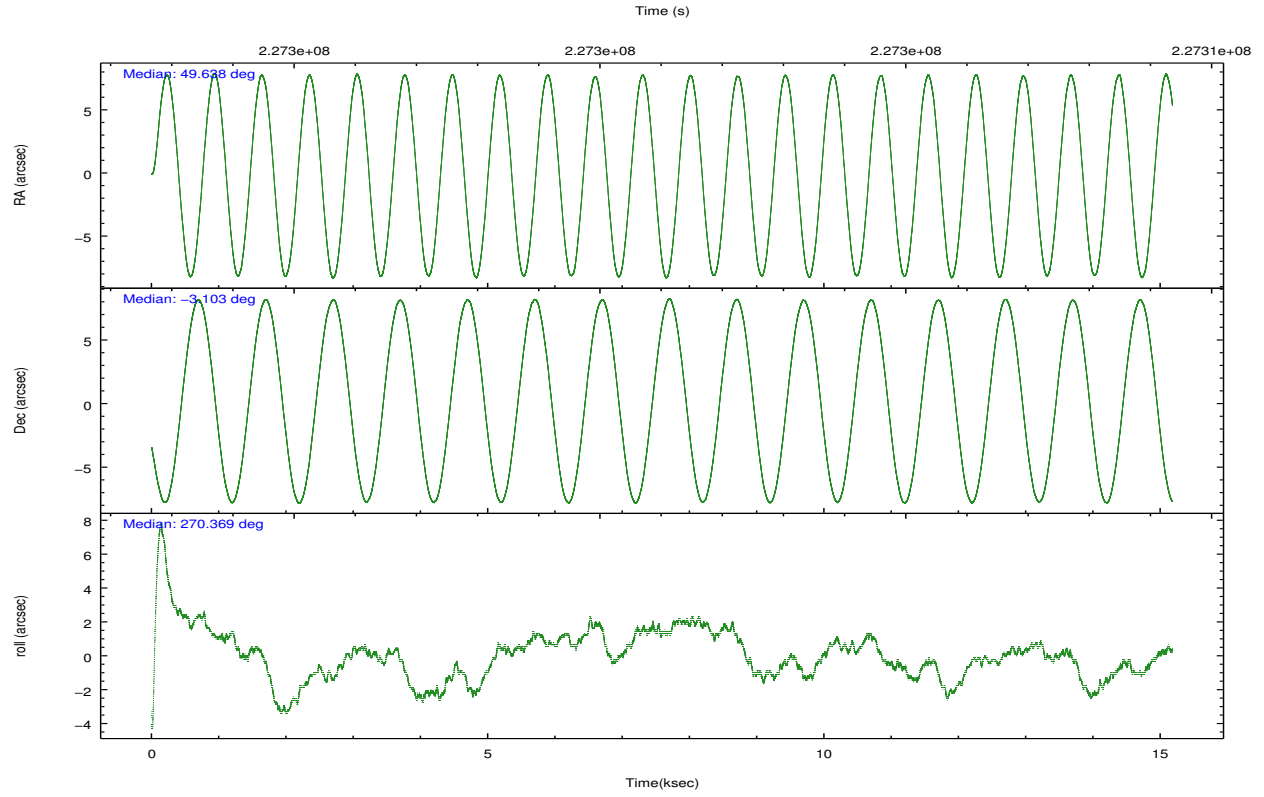
	ccd 0	ccd 1	ccd 2	ccd 3	ccd 6
level 1 events	86068	84318	94277	94038	91909
rejected events	76460	73219	85004	83248	81920
rejected %	88%	86%	90%	88%	89%

	ccd 0	ccd 1	ccd 2	ccd 3	ccd 6
grade 0 events	3474	4340	3603	4799	3720
	4%	5%	3%	5%	4%
grade 1 events	48	49	52	38	40
	0%	0%	0%	0%	0%
grade 2 events	2208	2379	2077	2039	2100
	2%	2%	2%	2%	2%
grade 3 events	1091	1197	969	1093	1139
	1%	1%	1%	1%	1%
grade 4 events	993	1141	964	1064	1024
	1%	1%	1%	1%	1%
grade 5 events	3278	3463	3013	3681	3793
	3%	4%	3%	3%	4%
grade 6 events	1844	2049	1666	1797	2012
	2%	2%	1%	1%	2%
grade 7 events	73132	69700	81933	79527	78081
	84%	82%	86%	84%	84%

2.2 Compared Parameters

Parameter	Planned	Actual	Parameter	Planned	Actual
Instrument	ACIS	ACIS	Obspar format version number	7	7
Detector	ACIS-01236	ACIS-01236	Obspar file type	PREDICTED	ACTUAL
Grating	NONE	NONE	Obspar update status	NONE	UPDATED
Data mode	VFAINT	VFAINT	Number of optional ACIS chips dropped	0	0
Observation mode	POINTING	POINTING	On-chip summing requested	N	N
[deg] Pointing RA	49.623564	49.63756000295687	Subarray requested	NONE	NONE
[deg] Pointing Dec	-3.079601	-3.103205529992514	Alternating exposures requested	N	N
[deg] Pointing Roll	270.167201	270.3766321248145	[s] Primary exposure time	0.000000	3.1
[mm] SIM focus pos	-0.782348	-0.7809083437167272			
[mm] SIM defocus	0	0.001439871863259334			
[mm] SIM translation stage pos	-225.840463	-225.8458576473255			
[mm] SIM translation stage offset	-7.752	-7.746595355604228			
[s] Observation start time (MET)	227293609.184000	227292900.39989			
Observation start date	2005-03-15T17:05:45	2005-03-15T16:55:00			
[s] Observation end time (MET)	227308609.184000	227309665.81315			
Observation end date	2005-03-15T21:15:45	2005-03-15T21:34:25			
Read mode	TIMED	TIMED			

2.3 Aspect

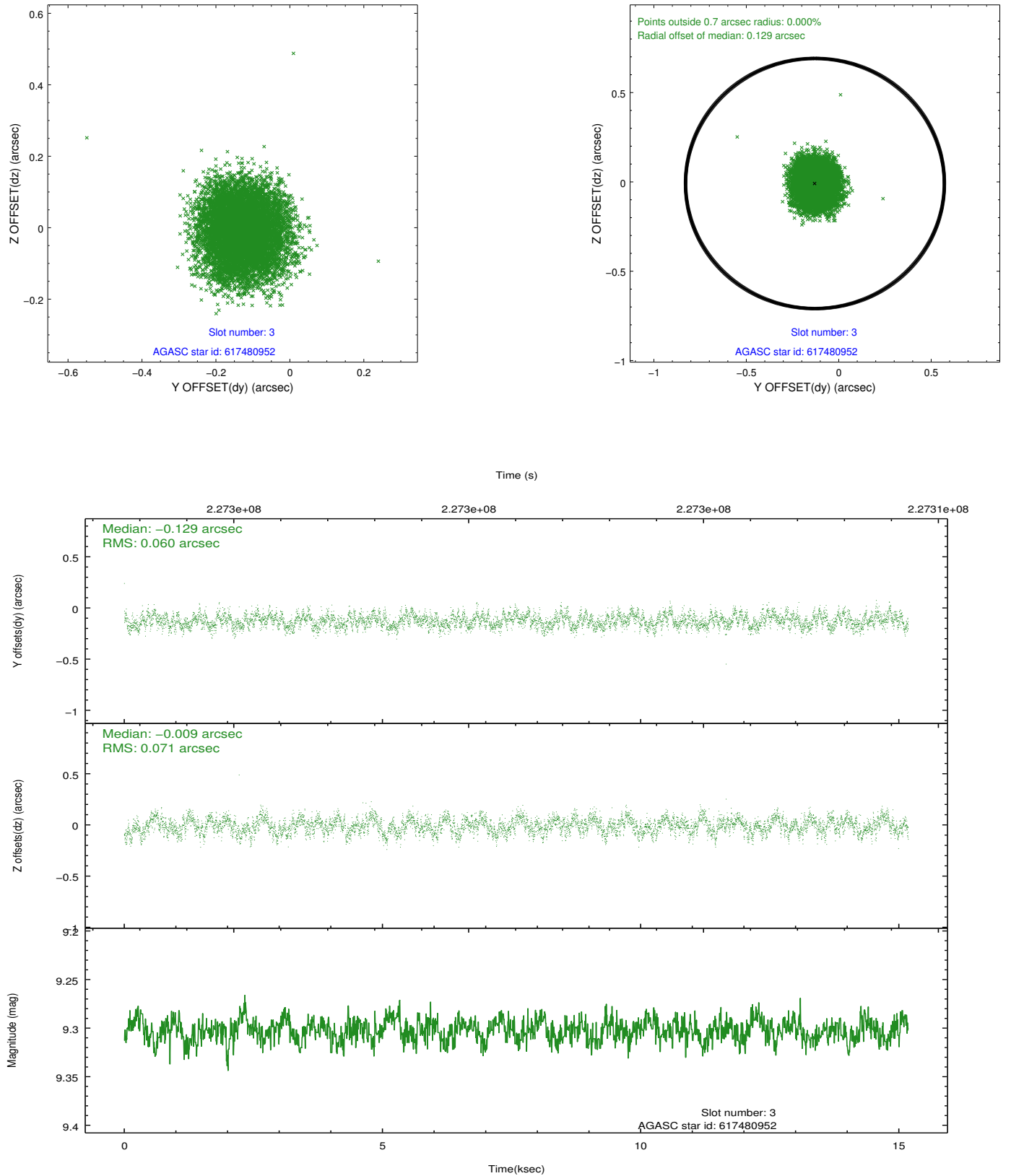


Slot Statistics

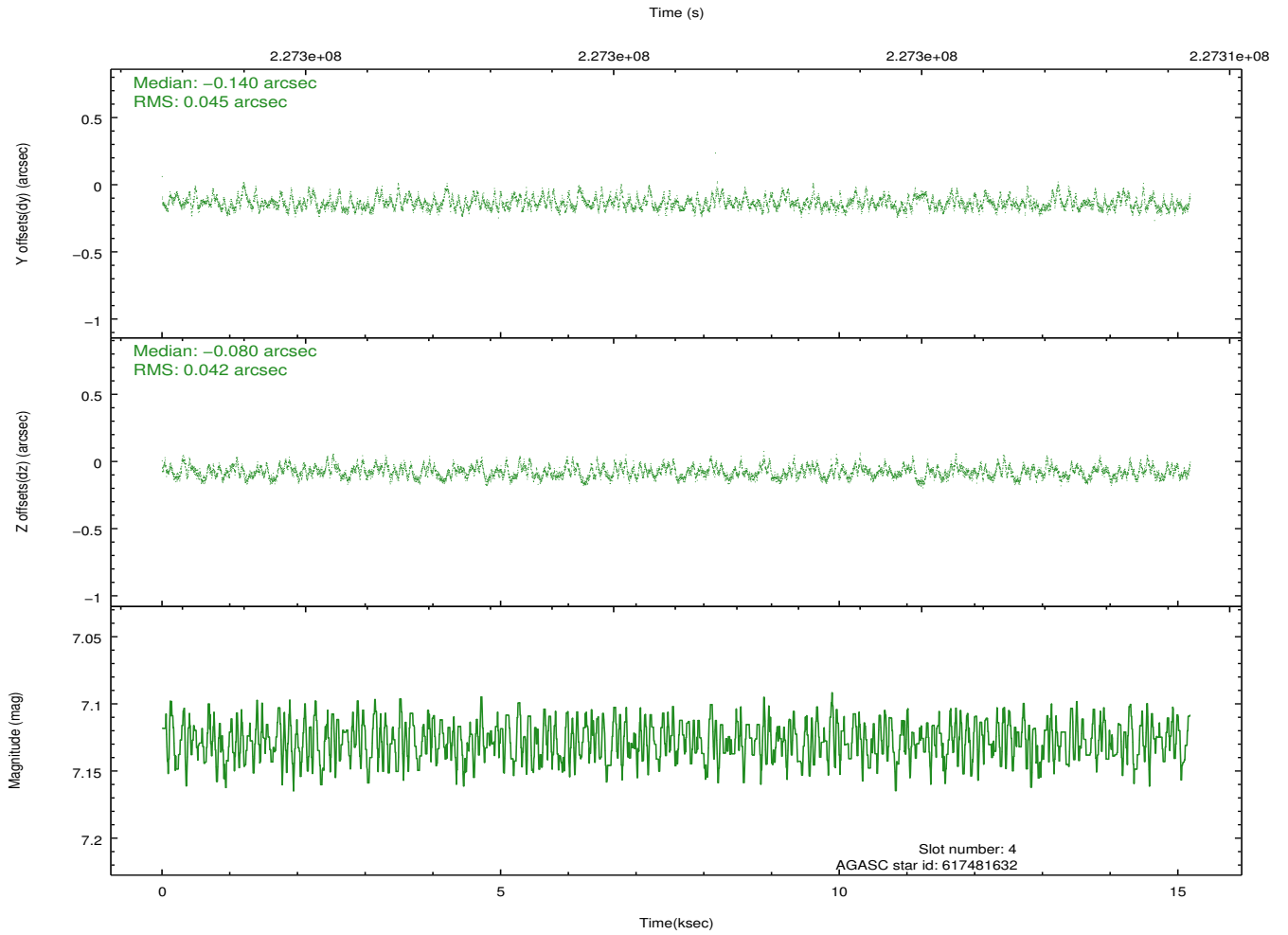
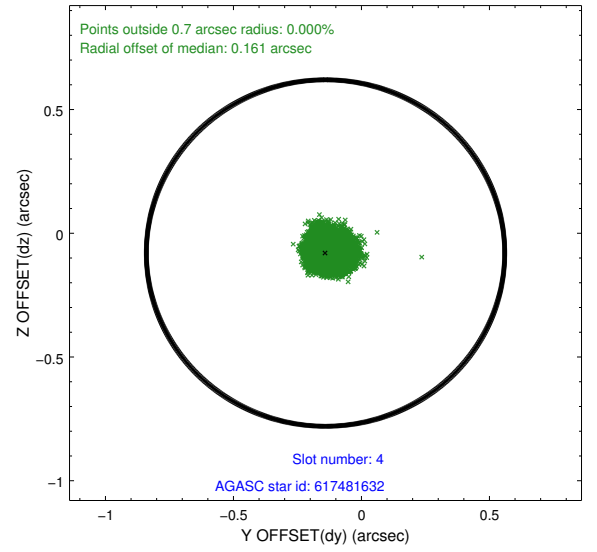
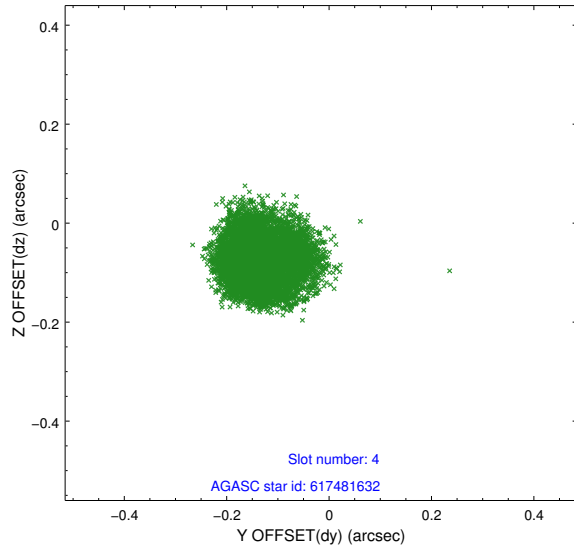
slot	status	id	mag	n_pts	med_dy	med_dz	dr1	dr2	ra	dec	mean_y	mean_z
0	FID	ACIS-I-1	7.23	3703	0.107	-0.179	0.008	0.013	0.000000	0.000000	933.60	-994.73
1	FID	ACIS-I-4	7.14	3701	-0.030	0.097	0.007	0.012	0.000000	0.000000	2153.19	906.15
2	FID	ACIS-I-5	7.22	3703	-0.174	0.153	0.006	0.012	0.000000	0.000000	-1814.34	903.35
3	GUIDE	617480952	9.30	7402	-0.129	-0.009	0.101	0.156	49.196103	-2.583964	-1788.15	-1532.19
4	GUIDE	617481632	7.13	7406	-0.140	-0.080	0.066	0.107	49.757893	-2.843196	-849.26	486.52
5	GUIDE	617488168	7.63	7406	0.133	0.005	0.065	0.104	49.169459	-3.530265	1618.74	-1635.66
6	GUIDE	617488464	8.94	7403	0.025	-0.047	0.084	0.129	49.246846	-3.265182	665.17	-1356.11
7	GUIDE	617611592	9.59	7398	0.104	0.132	0.093	0.155	50.028395	-3.018498	-215.14	1456.17

2.4 Star Slots

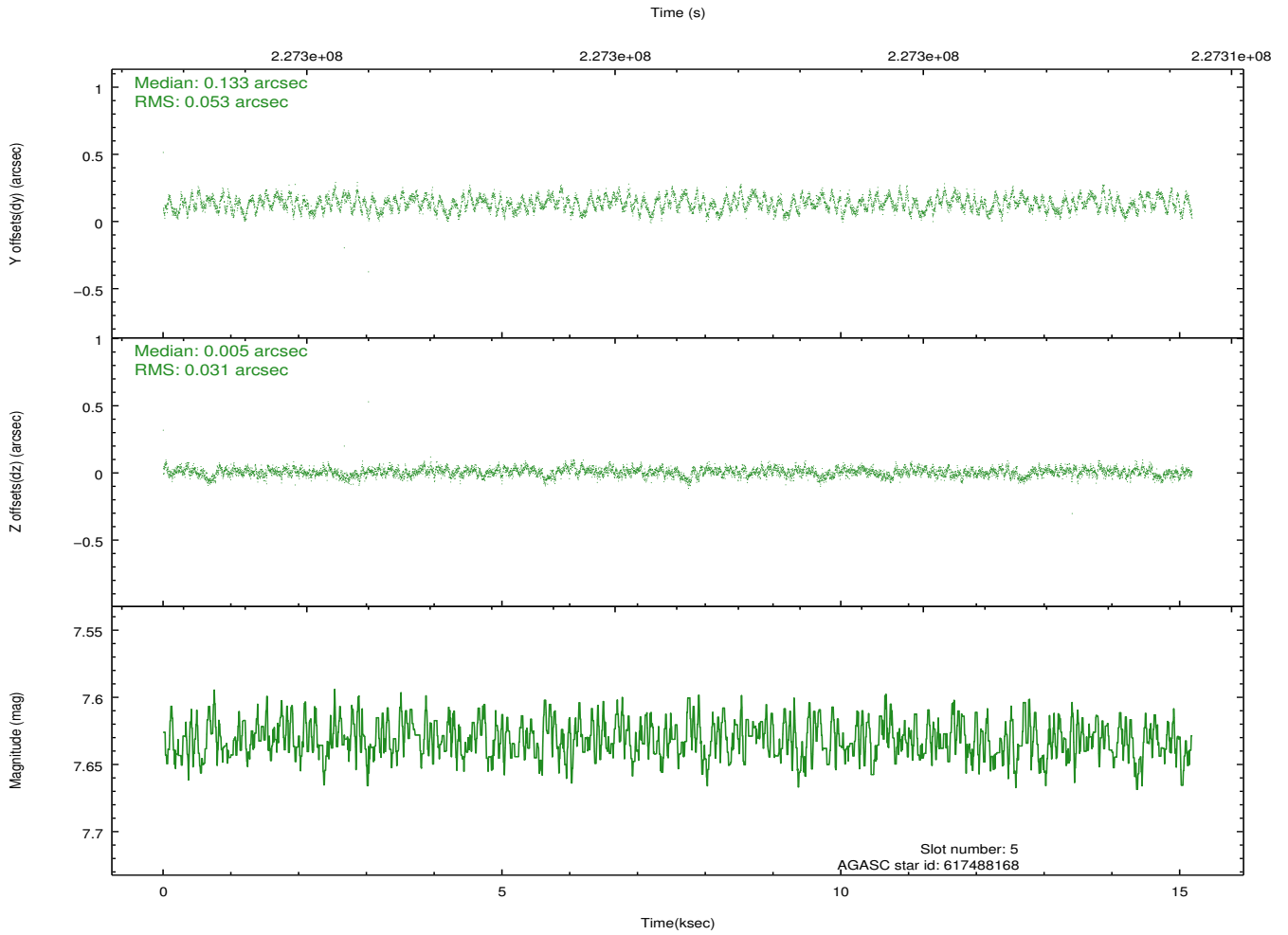
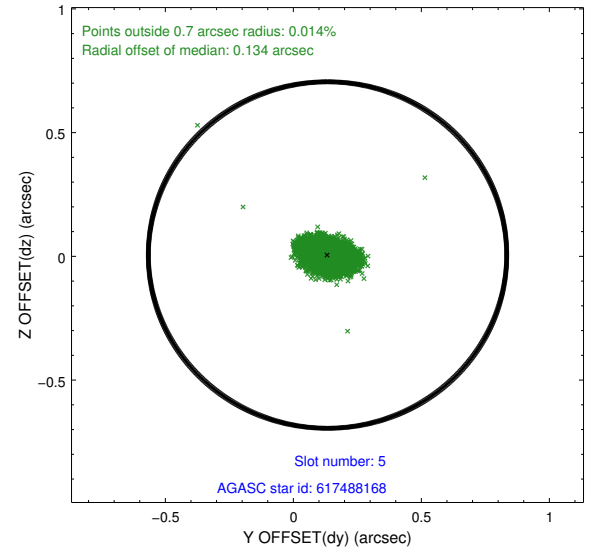
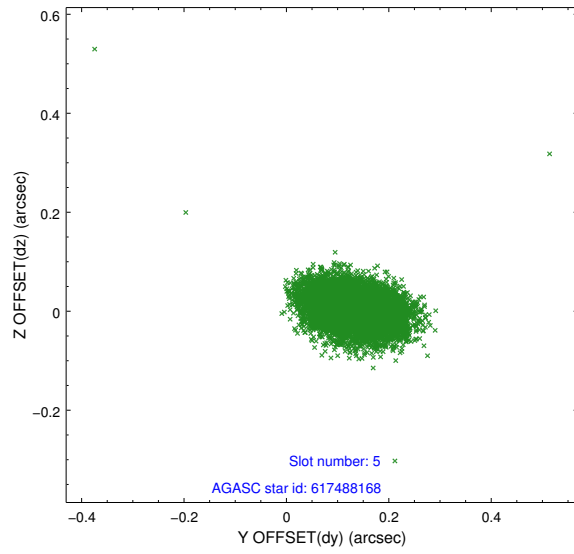
2.4.1 Slot 3



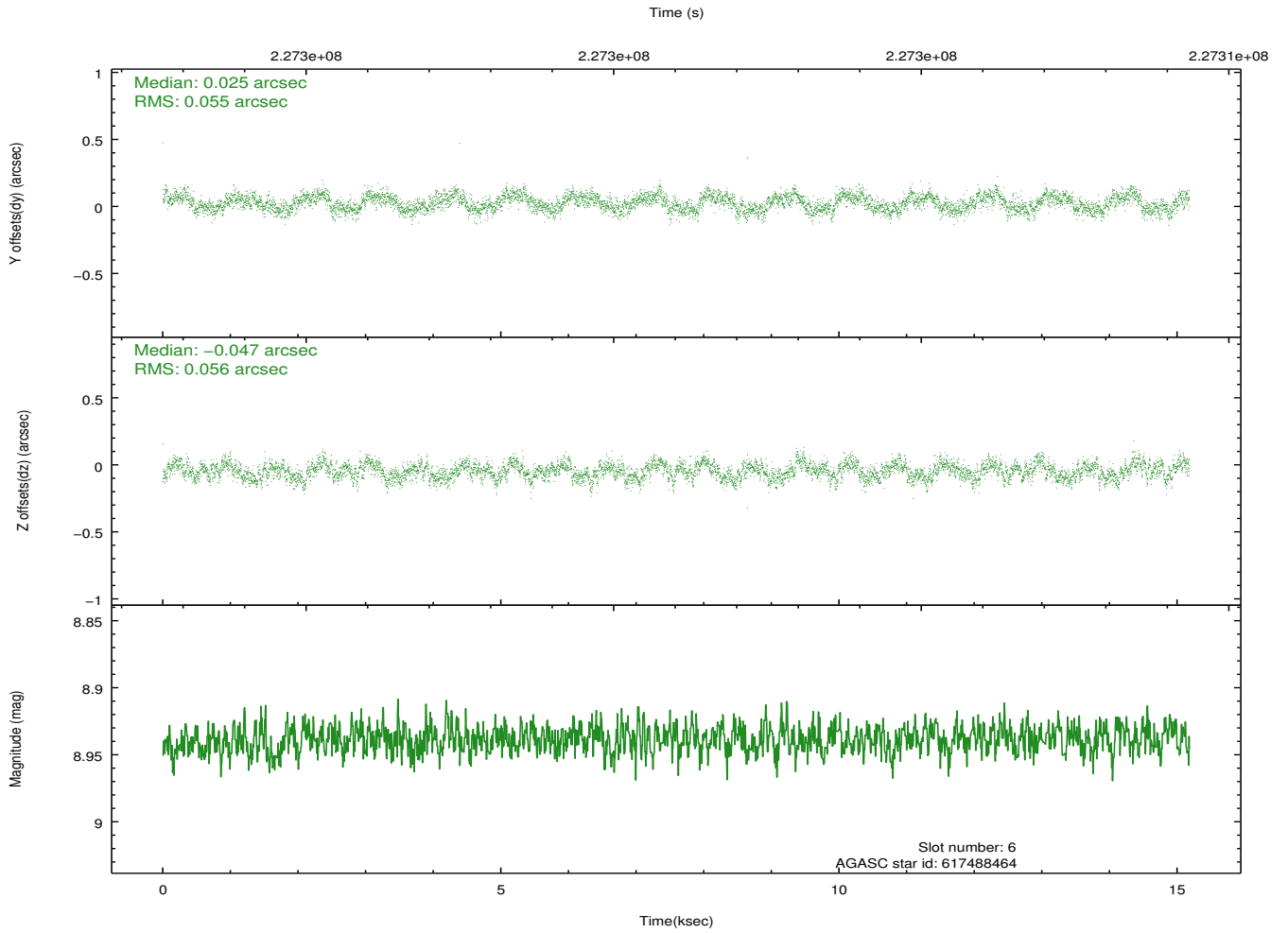
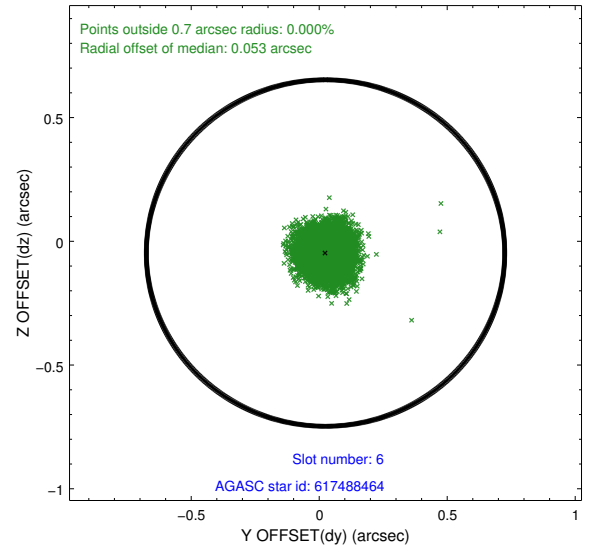
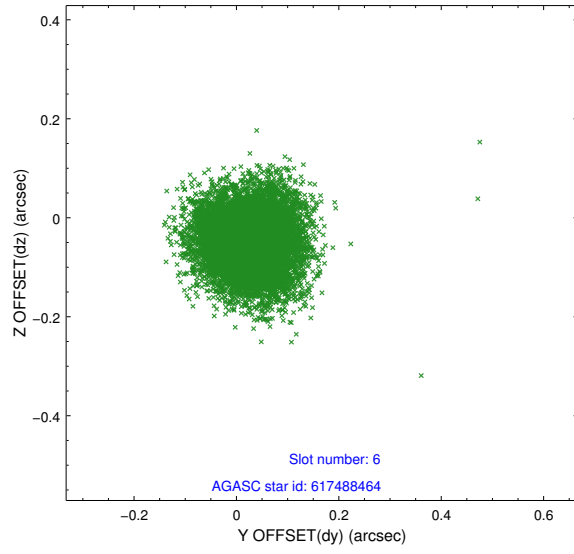
2.4.2 Slot 4



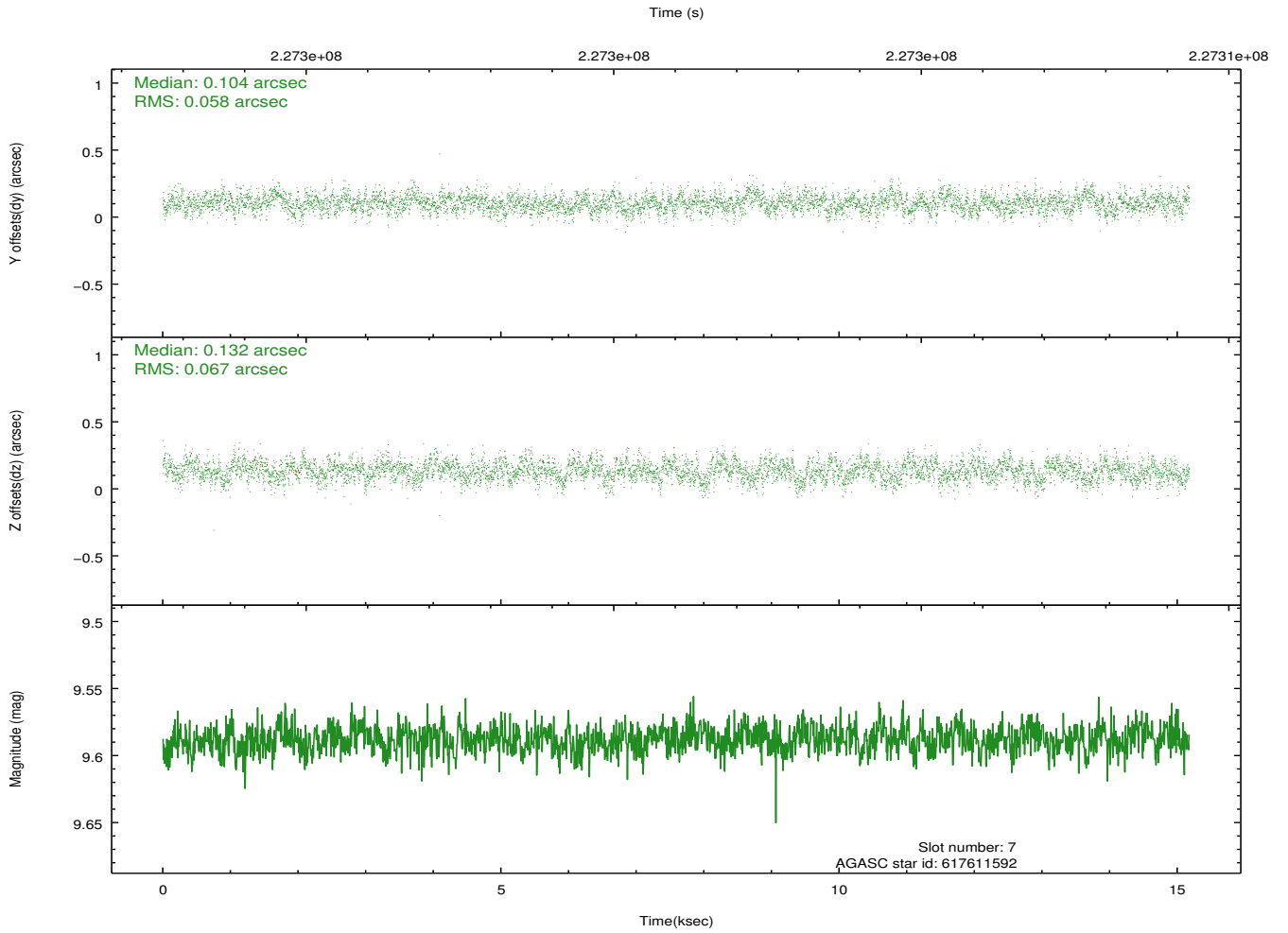
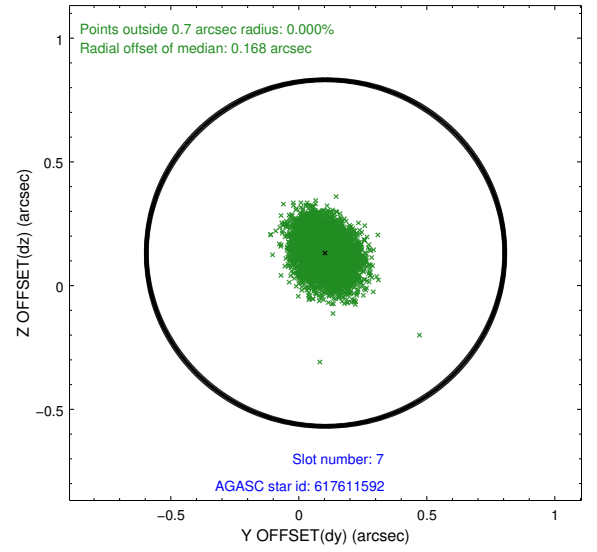
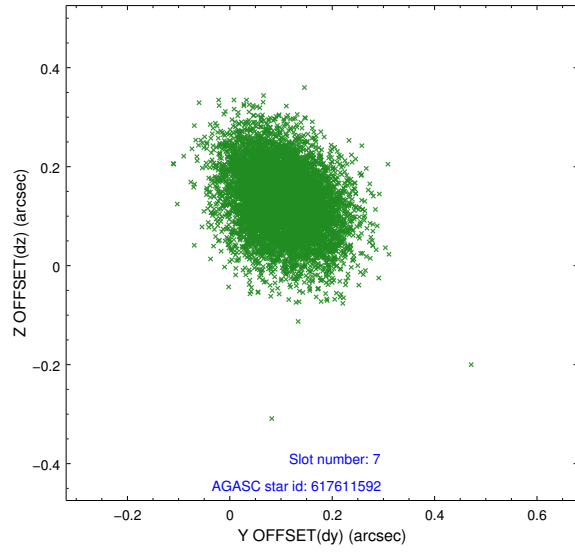
2.4.3 Slot 5



2.4.4 Slot 6

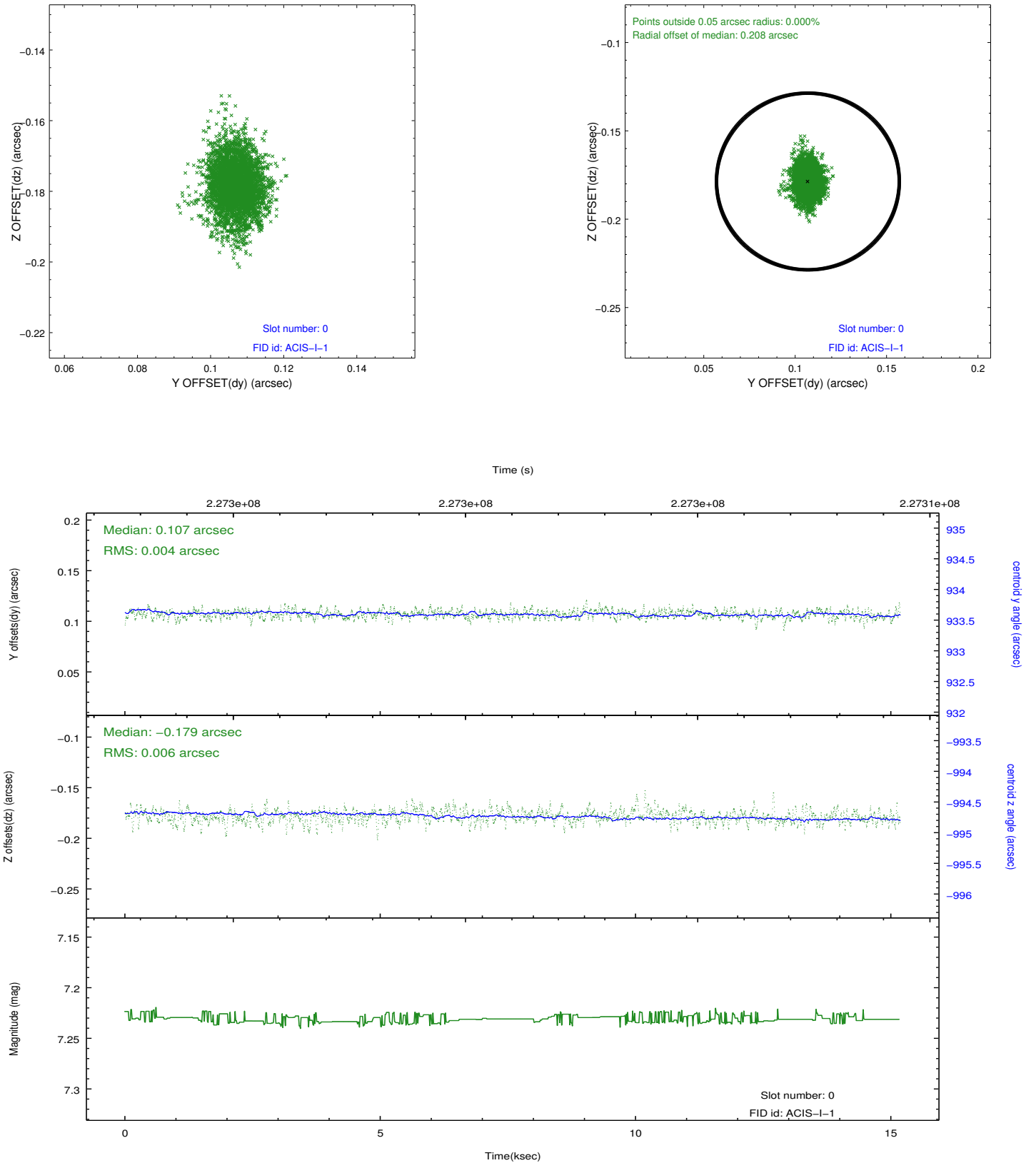


2.4.5 Slot 7

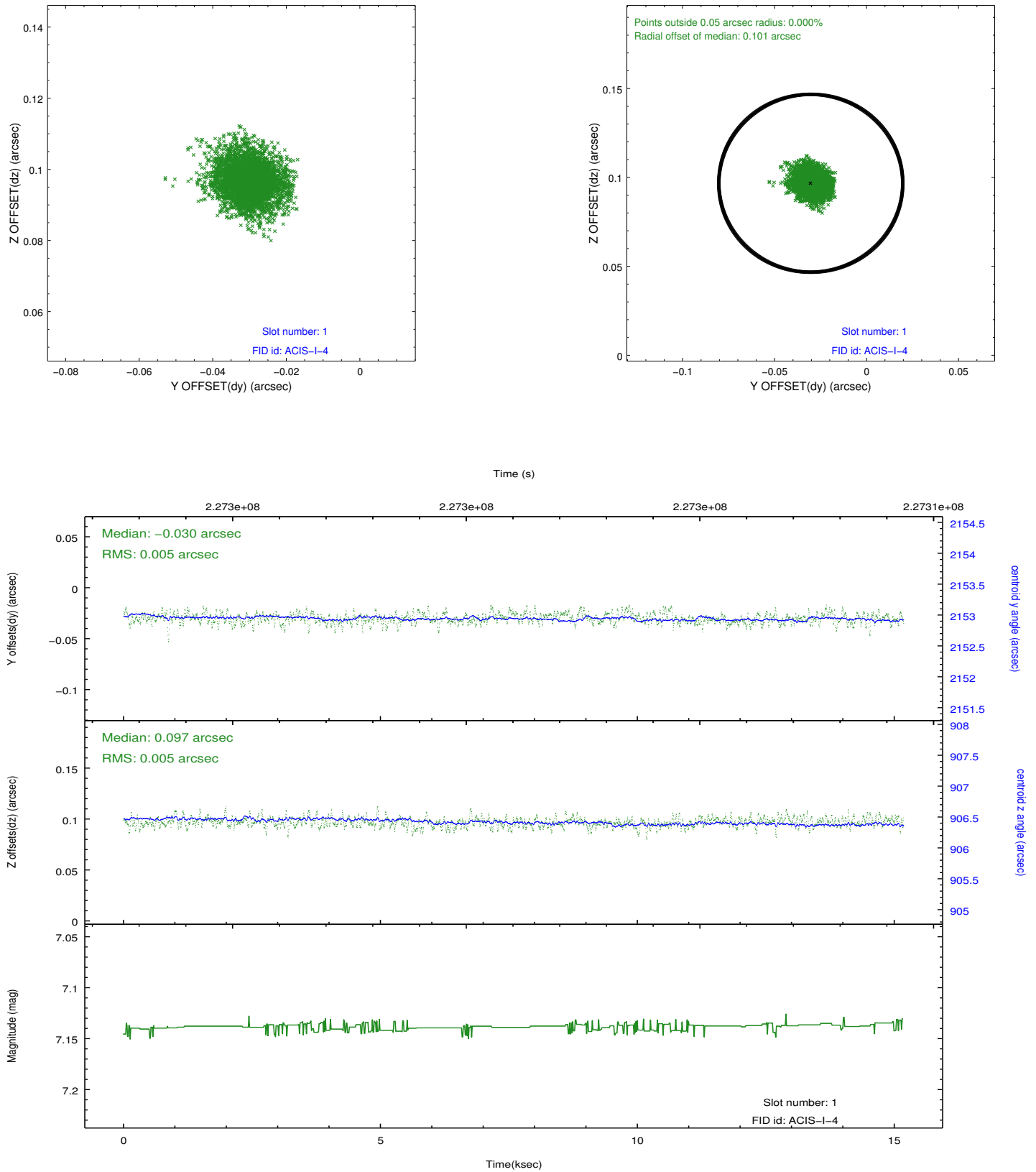


2.5 FID Slots

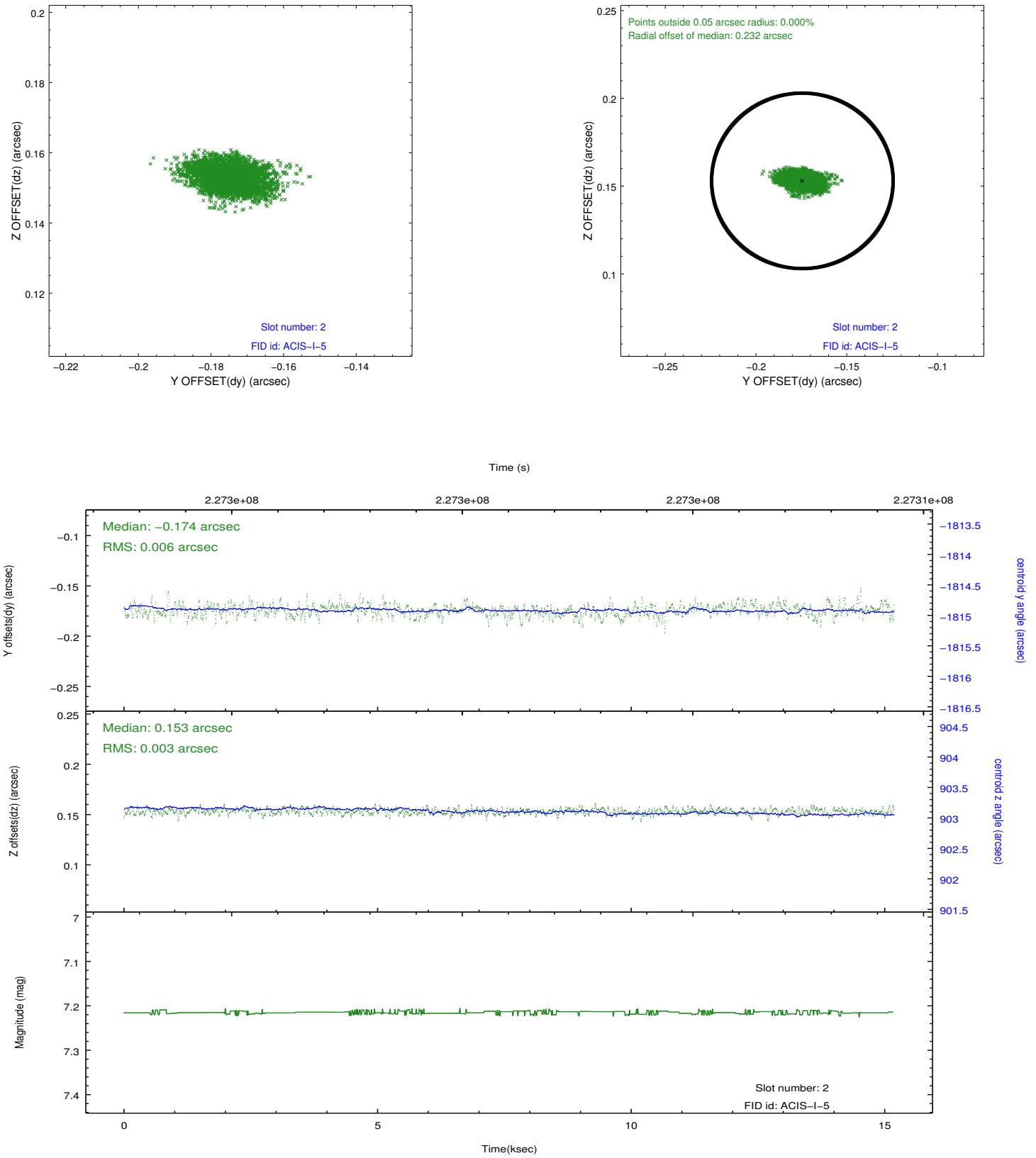
2.5.1 Slot 0



2.5.2 Slot 1



2.5.3 Slot 2



A Summary

A.1 Status

V&V Scientist	Jen Lauer
V&V Date (YYYY-MM-DD)	2013.01.11
V&V Edition	1
V&V Disposition and Status	OK
V&V Charge Time	14.77141

A.2 Comments