

V&V Reference Report

L2 ASCDS Version : 7.6.7

Observation 5775 - L2 Version 002
Chandra X-Ray Center

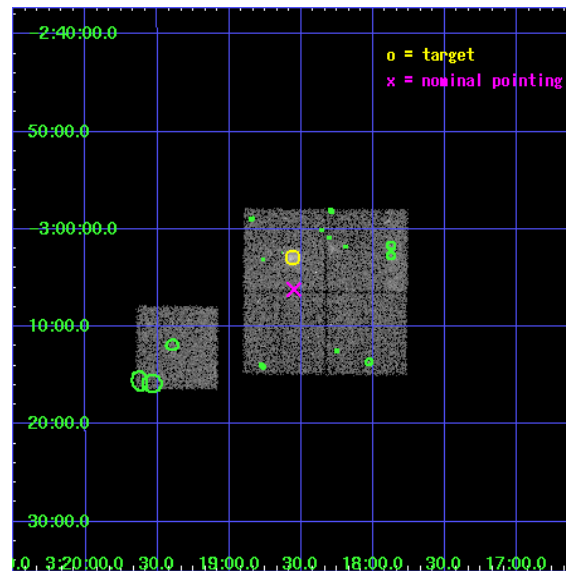
L2 Processing Date: Feb 27 2006

Contents

1	Front	2
2	OBI	3
2.1	OBI	3
2.1.1	Images	3
2.1.2	Bias	3
2.1.3	Parameters	4
2.1.4	Events	4
2.2	Compared Parameters	5
2.3	Aspect	6
2.4	Star Slots	9
2.4.1	Slot 3	9
2.4.2	Slot 4	10
2.4.3	Slot 5	11
2.4.4	Slot 6	12
2.4.5	Slot 7	13
2.5	FID Slots	14
2.5.1	Slot 0	14
2.5.2	Slot 1	15
2.5.3	Slot 2	16
3	Point Sources	17
A	Summary	18
A.1	Status	18
A.2	Comments	18

1 Front

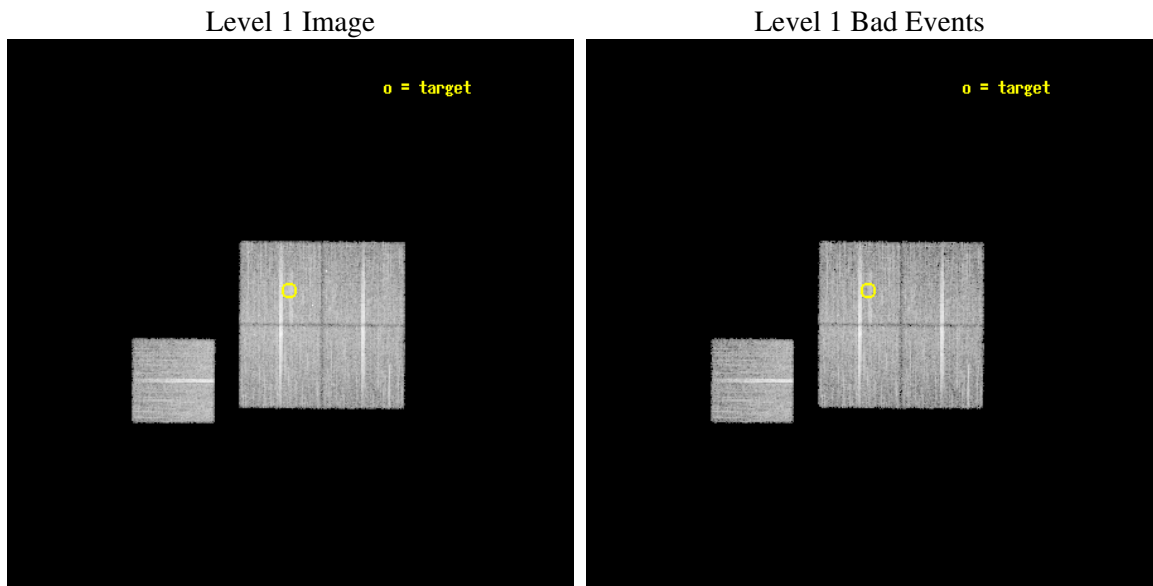
seq_num	800488
obs_id	5775
title	Chandra observations of high-redshift clusters of galaxies from the 400 Square Degrees ROSAT PSPC survey
observer	Dr. Steven Murray
object	cl0318-0302
dtcycle	0
cycle	P
ra_targ	49.639167
dec_targ	-3.048889
ra_nom	49.637559921414
dec_nom	-3.1031777523343
roll_nom	270.37663211367
revision	2
ontime	14771.417991281
livetime	14578.418540665
ontime0	14777.699971586
ontime1	14774.55901134
ontime2	14774.55901134
ontime3	14771.417991281
ontime6	14777.699971586
l2events	42759



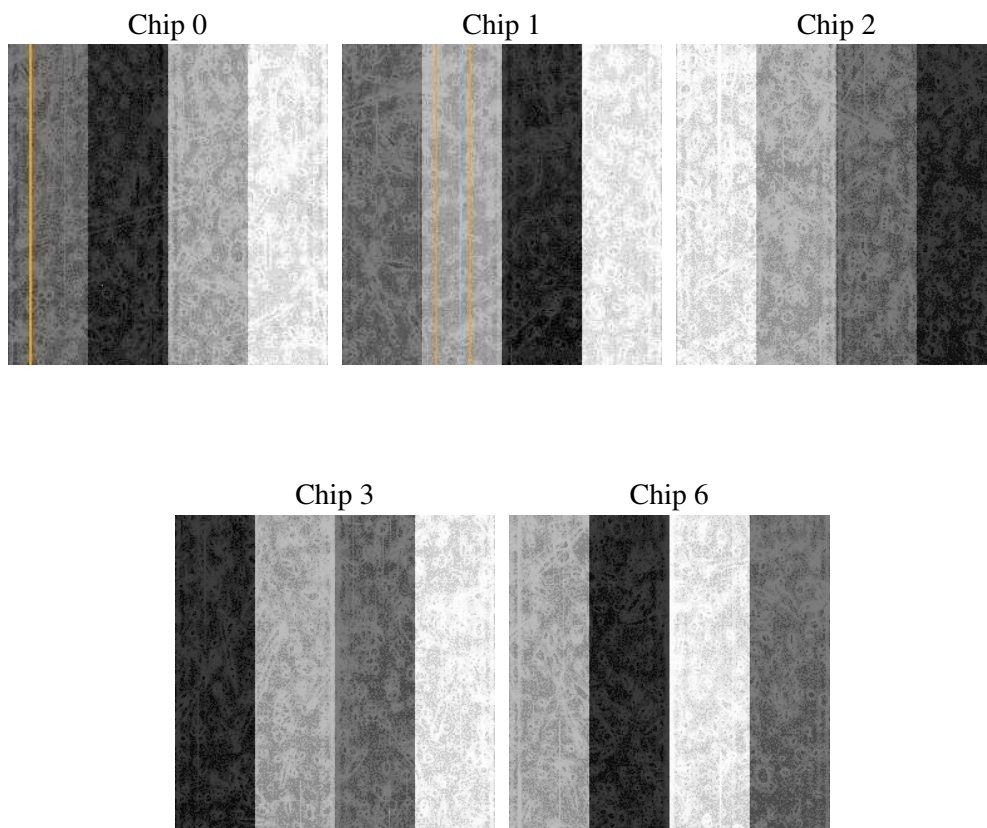
2 OBI

2.1 OBI

2.1.1 Images



2.1.2 Bias



2.1.3 Parameters

obi_num	1
ascdsver	7.6.7
caldsver	3.2.1
date	2006-02-27T11:02:46
revision	2

sched_exp_time	15000.000000
ontime	14775.272009939
ontime0	14781.553990245
ontime1	14778.413010091
ontime2	14778.413029999
ontime3	14775.272009939
ontime6	14781.553990245
l1events	450610

2.1.4 Events

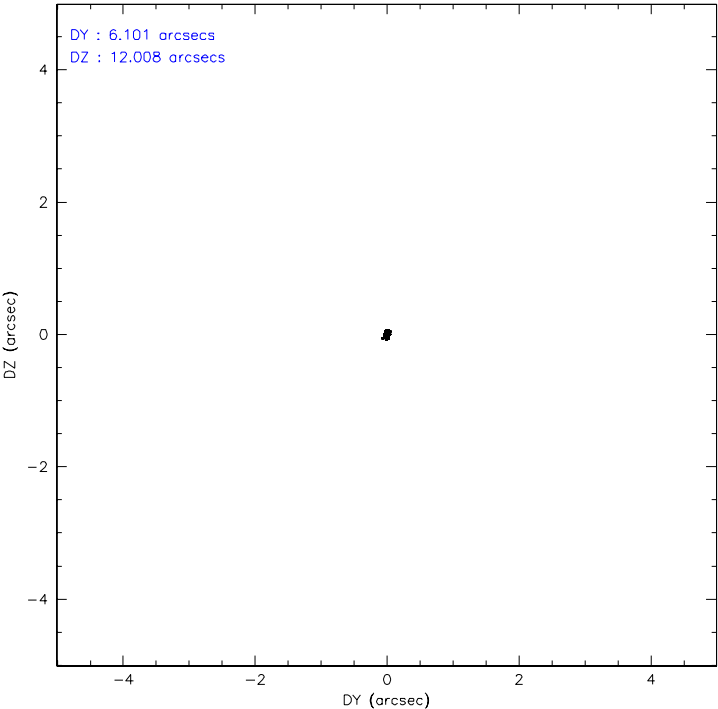
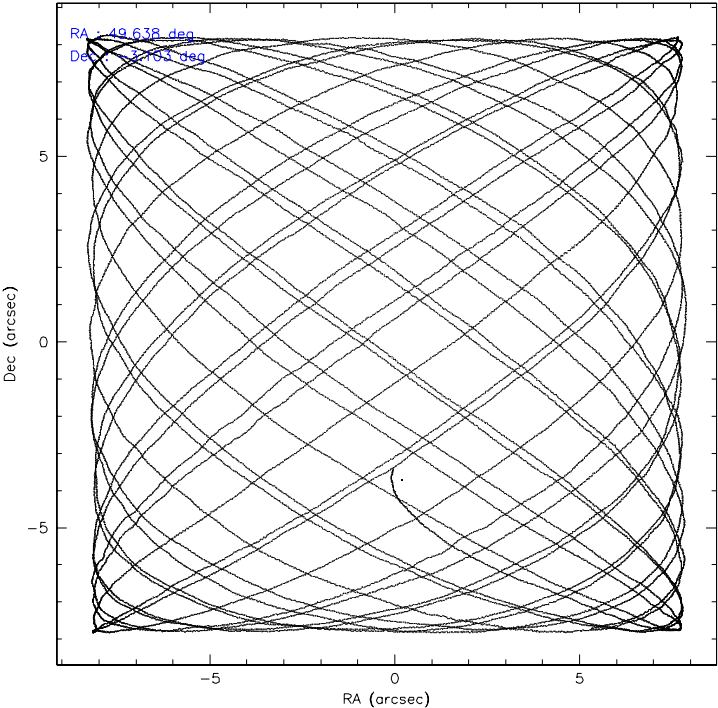
	ccd 0	ccd 1	ccd 2	ccd 3	ccd 6
level 1 events	86068	84318	94277	94038	91909
rejected events	76458	73216	85001	83246	81917
rejected %	88%	86%	90%	88%	89%

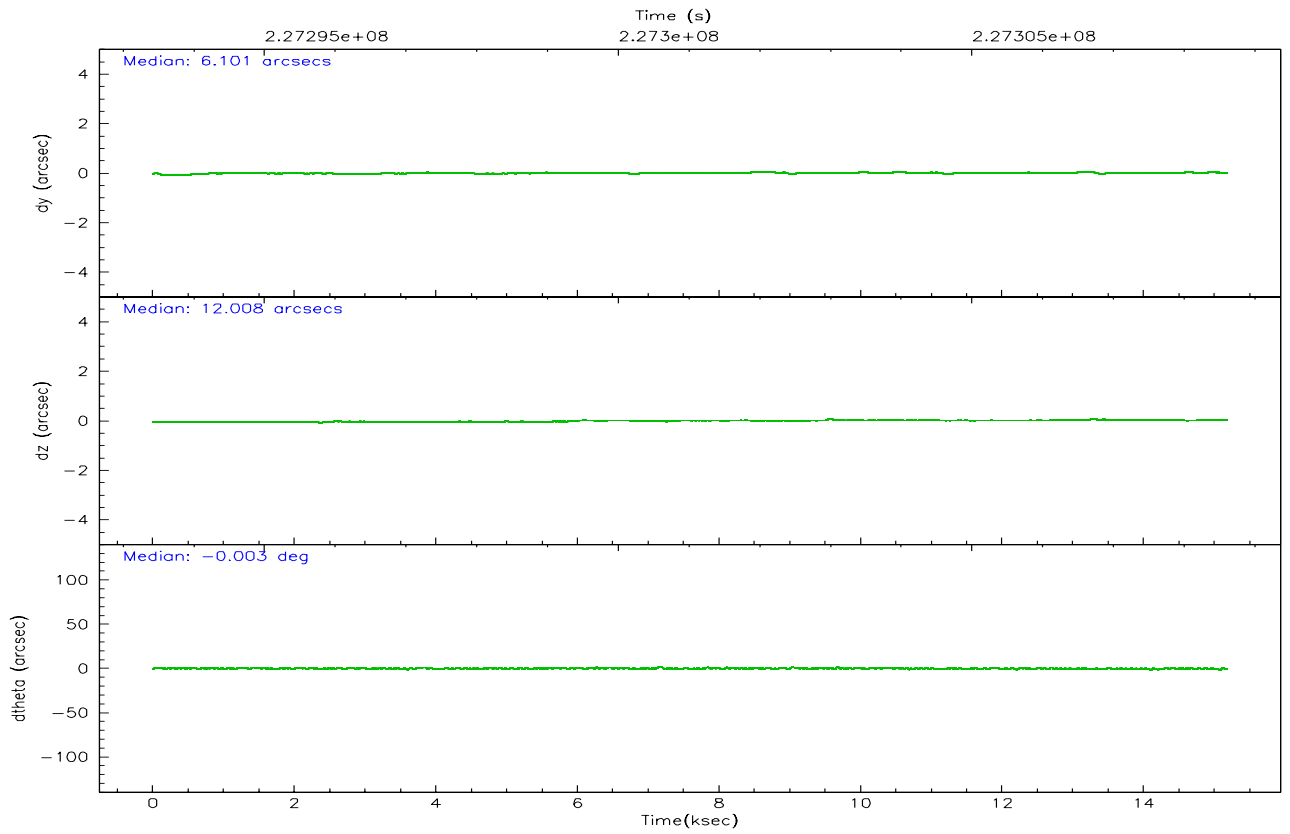
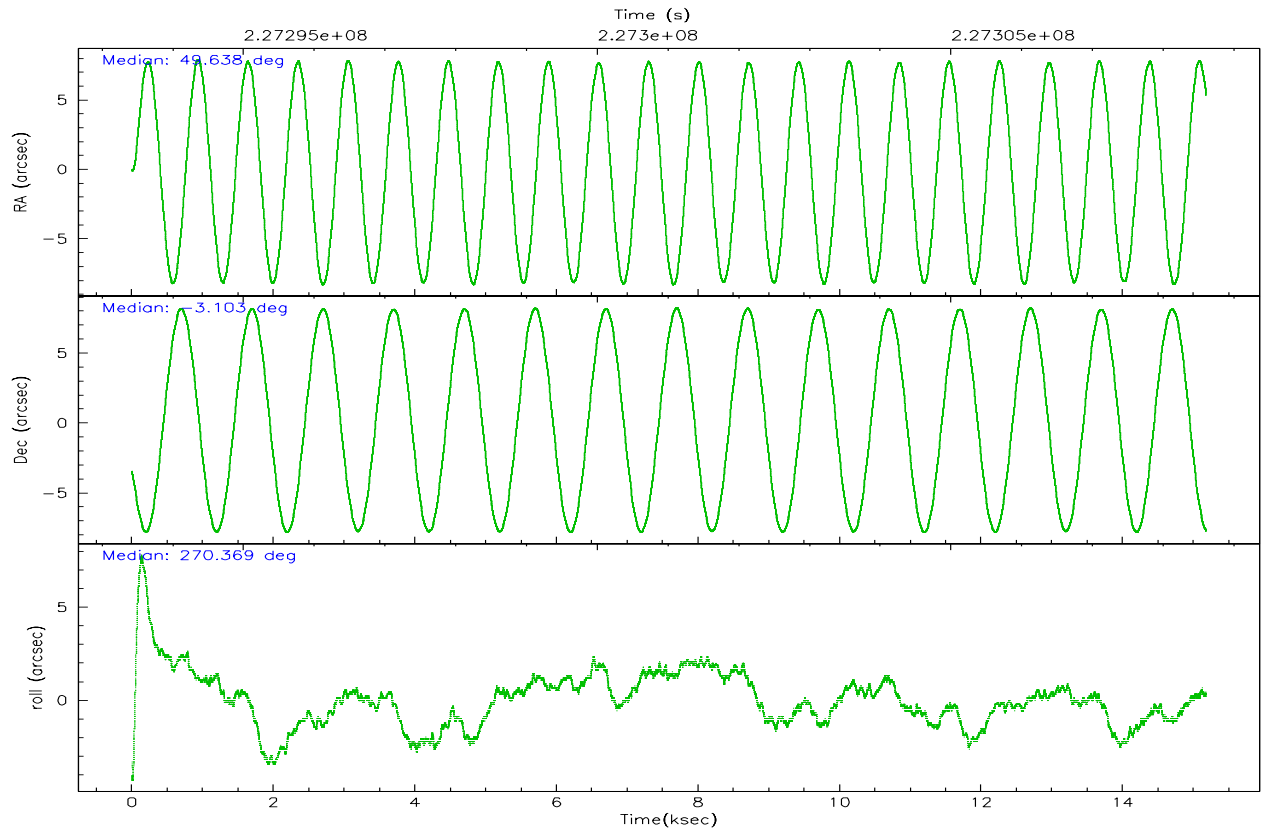
	ccd 0	ccd 1	ccd 2	ccd 3	ccd 6
grade 0 events	3474	4340	3603	4799	3720
	4%	5%	3%	5%	4%
grade 1 events	48	49	52	38	40
	0%	0%	0%	0%	0%
grade 2 events	2208	2379	2077	2039	2100
	2%	2%	2%	2%	2%
grade 3 events	1091	1197	969	1093	1139
	1%	1%	1%	1%	1%
grade 4 events	993	1141	964	1064	1024
	1%	1%	1%	1%	1%
grade 5 events	3278	3463	3013	3680	3793
	3%	4%	3%	3%	4%
grade 6 events	1844	2049	1666	1797	2012
	2%	2%	1%	1%	2%
grade 7 events	73132	69700	81933	79528	78081
	84%	82%	86%	84%	84%

2.2 Compared Parameters

Parameter	Planned	Actual	Parameter	Planned	Actual
Instrument	ACIS	ACIS	Obspar format version number	6	6
Detector	ACIS-01236	ACIS-01236	Obspar file type	PREDICTED	ACTUAL
Grating	NONE	NONE	Obspar update status	NONE	UPDATED
Data mode	VFAINT	VFAINT	On-chip summing requested	N	N
Observation mode	POINTING	POINTING	Subarray requested	NONE	NONE
Pointing RA	49.623564	49.63755992141365	Alternating exposures requested	N	N
Pointing Dec	-3.079601	-3.103177752334297	Primary exposure time	0.000000	3.1
Pointing Roll	270.167201	270.3766321136749			
SIM focus pos (mm)	-0.782348	-0.7809083437167272			
SIM defocus (mm)	0	0.001439871863259334			
SIM translation stage pos (mm)	-225.840463	-225.8458576473255			
SIM translation stage offset (mm)	-7.752	-7.746595355604228			
Observation start time	227293609.184000	227292900.39989			
Observation start date	2005-03-15T17:05:45	2005-03-15T16:55:00			
Observation end time	227308609.184000	227309665.81315			
Observation end date	2005-03-15T21:15:45	2005-03-15T21:34:25			
Read mode	TIMED	TIMED			

2.3 Aspect



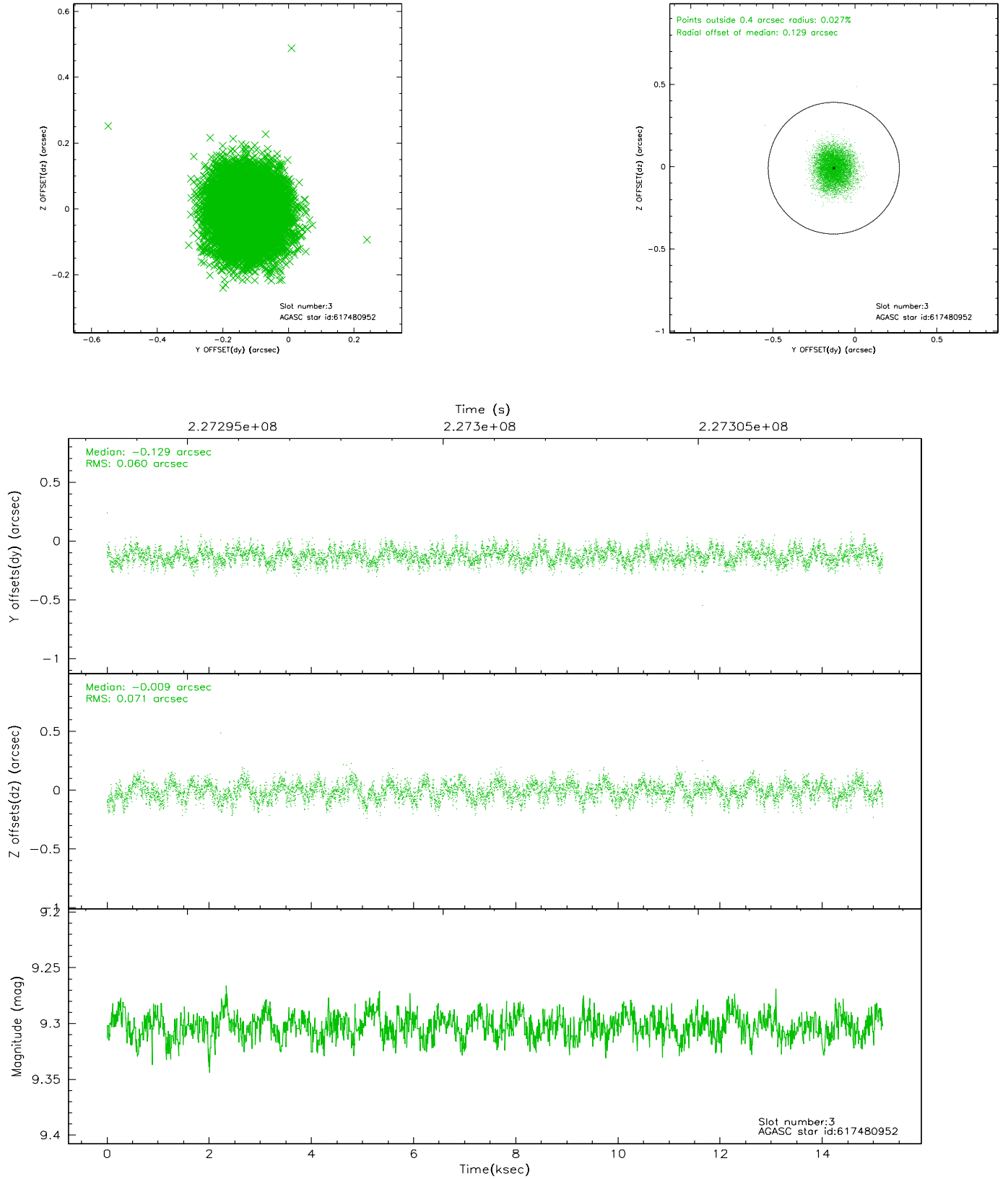


Slot Statistics

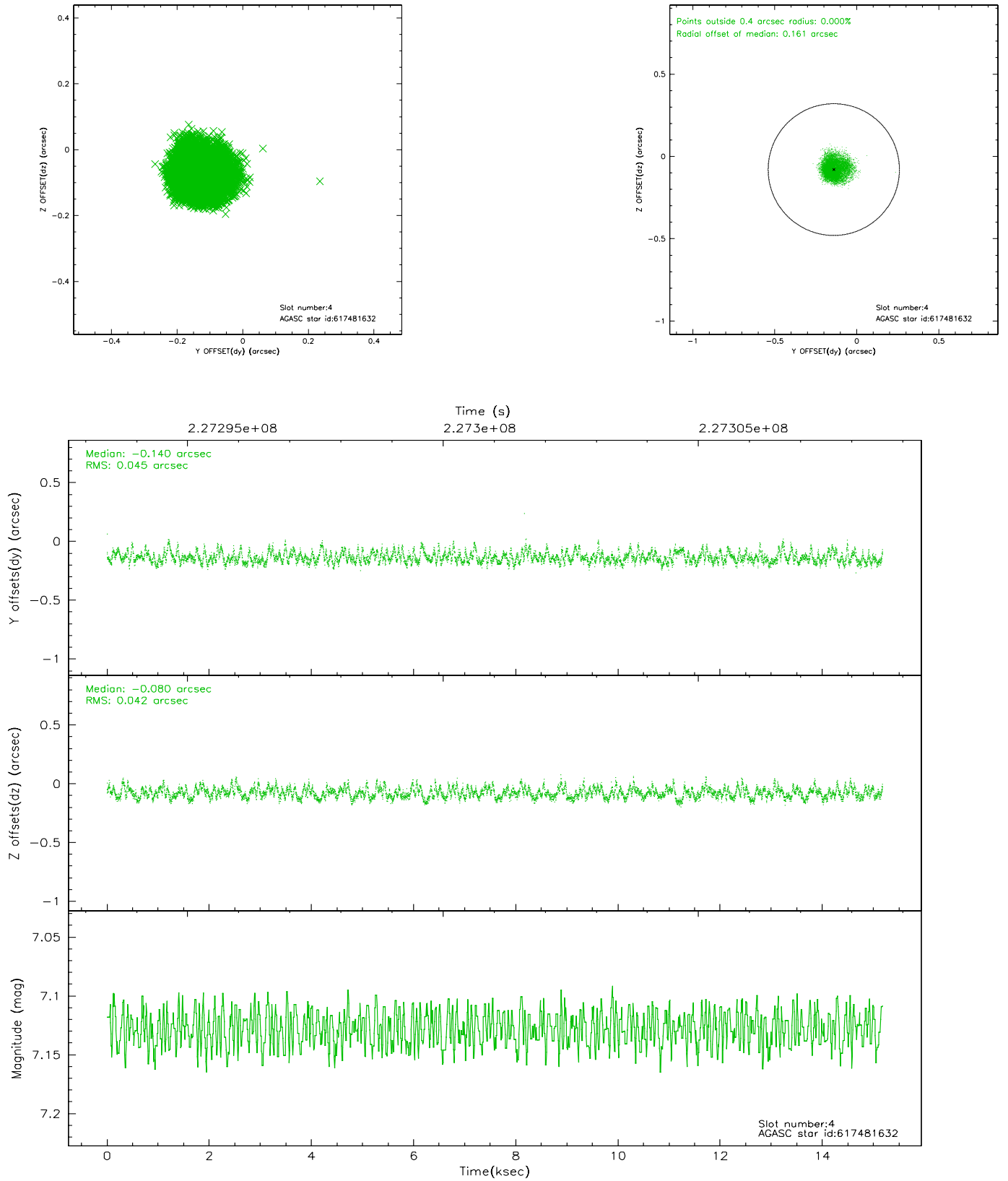
slot	status	id	mag	n_pts	med_dy	med_dz	dr1	dr2	ra	dec	mean_y	mean_z
0	FID	ACIS-I-1	7.23	3703	0.098	-0.155	0.007	0.013	0.000000	0.000000	933.58	-994.69
1	FID	ACIS-I-4	7.14	3701	-0.062	0.085	0.007	0.011	0.000000	0.000000	2153.15	906.16
2	FID	ACIS-I-5	7.22	3703	-0.133	0.141	0.006	0.011	0.000000	0.000000	-1814.30	903.36
3	GUIDE	617480952	9.30	7402	-0.129	-0.009	0.100	0.156	49.196103	-2.583964	-1788.15	-1532.19
4	GUIDE	617481632	7.13	7406	-0.140	-0.080	0.066	0.107	49.757893	-2.843196	-849.26	486.52
5	GUIDE	617488168	7.63	7406	0.133	0.005	0.065	0.104	49.169459	-3.530265	1618.74	-1635.66
6	GUIDE	617488464	8.94	7403	0.025	-0.047	0.084	0.129	49.246846	-3.265182	665.17	-1356.11
7	GUIDE	617611592	9.59	7398	0.104	0.132	0.093	0.155	50.028395	-3.018498	-215.14	1456.17

2.4 Star Slots

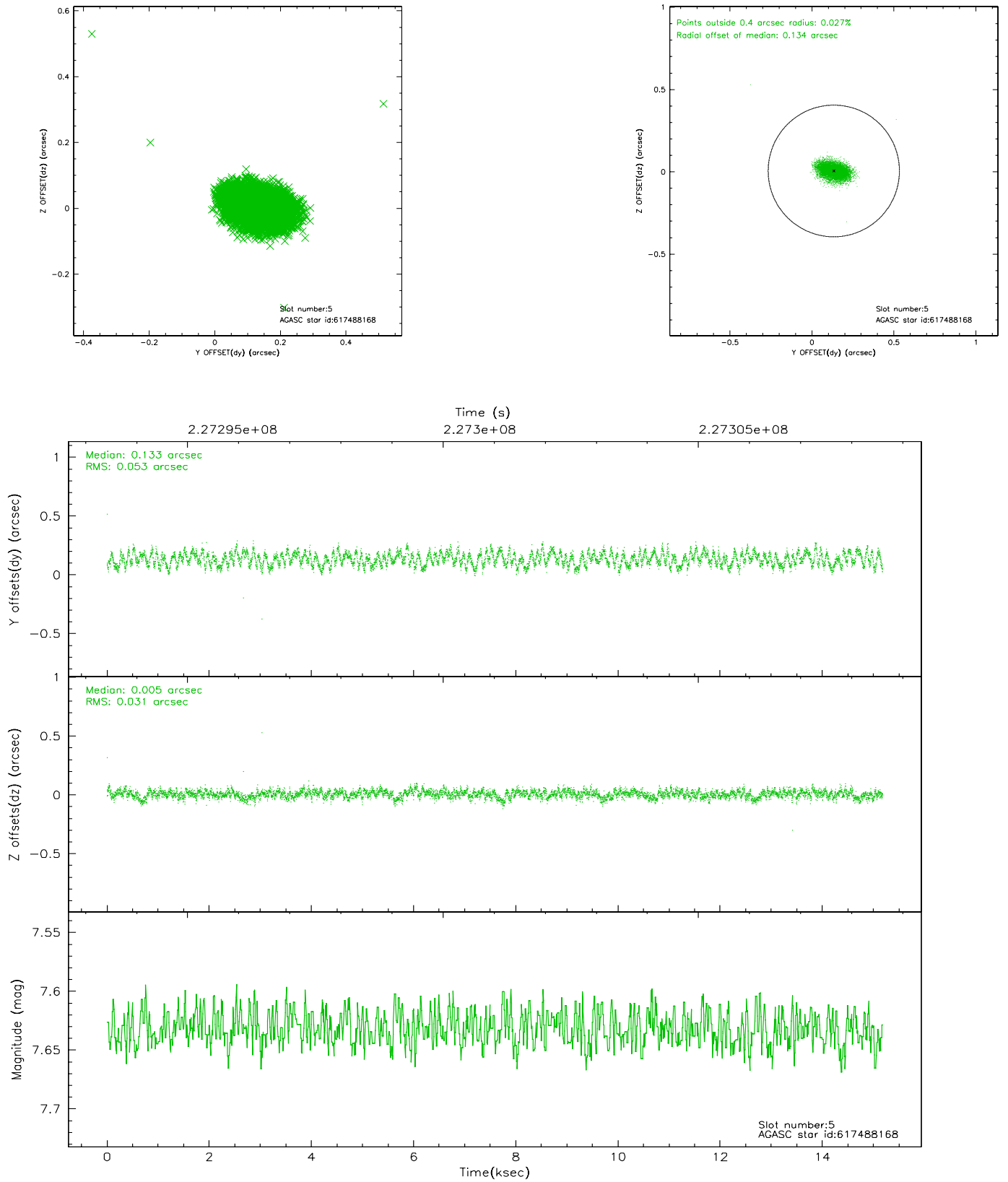
2.4.1 Slot 3



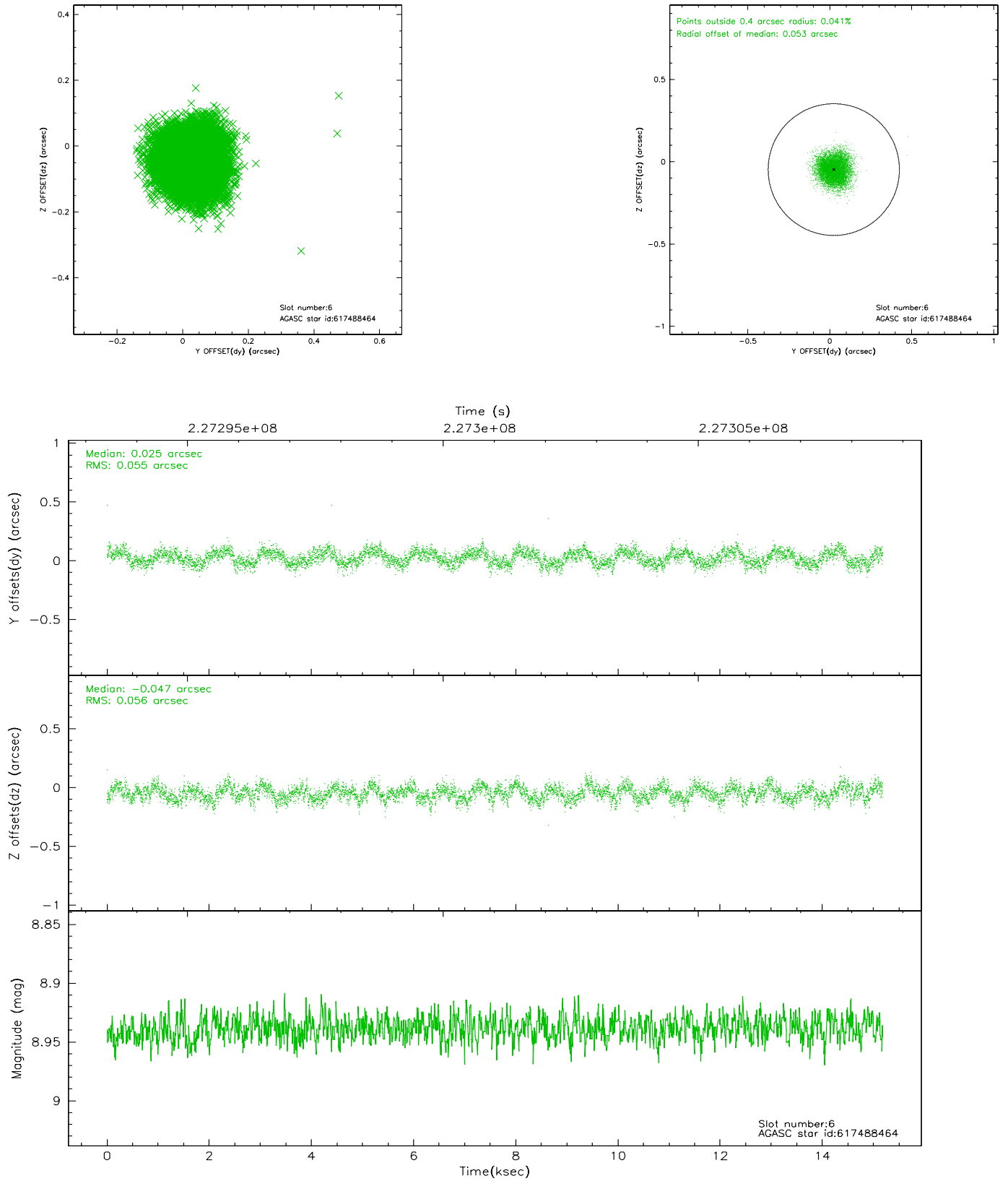
2.4.2 Slot 4



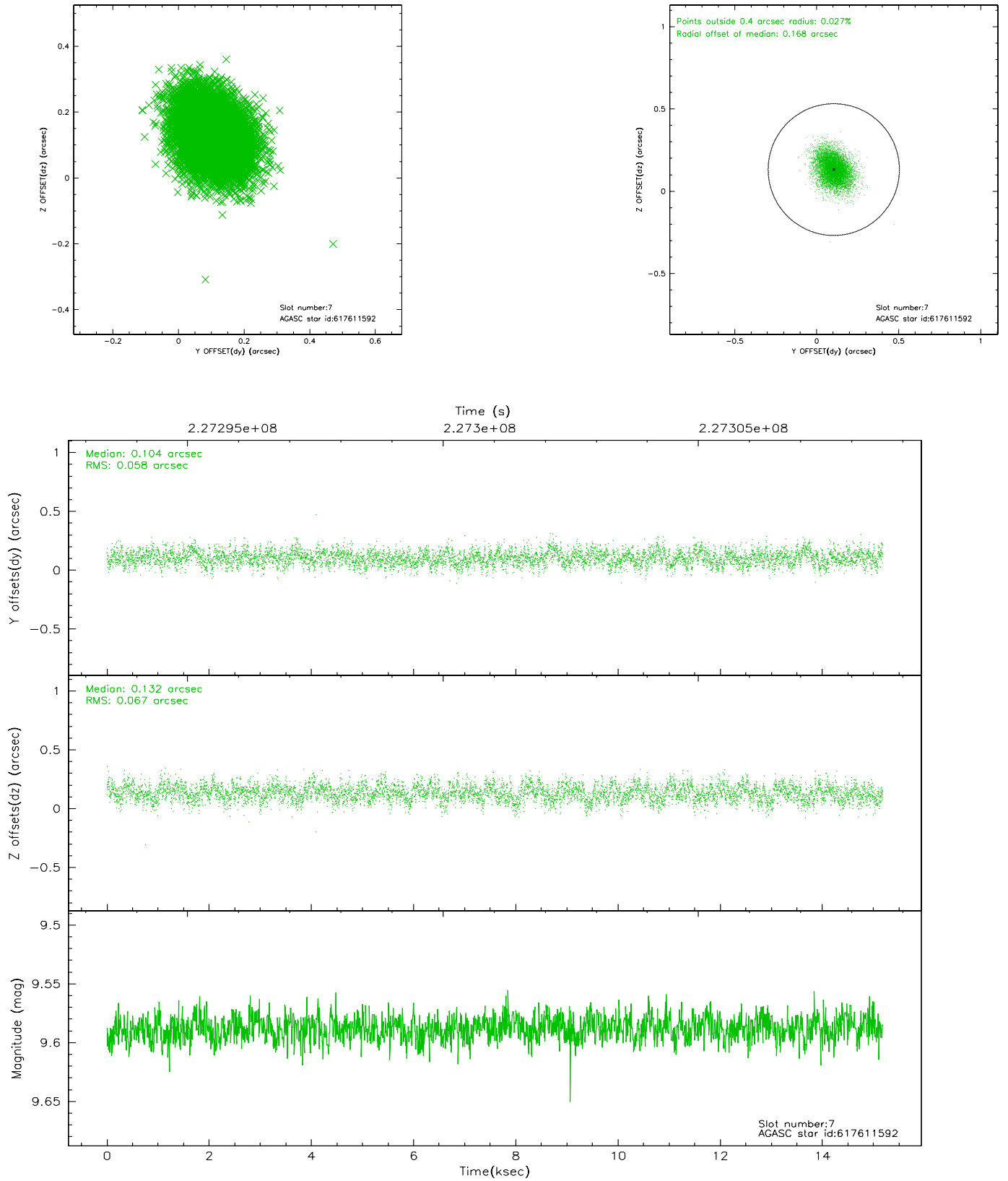
2.4.3 Slot 5



2.4.4 Slot 6

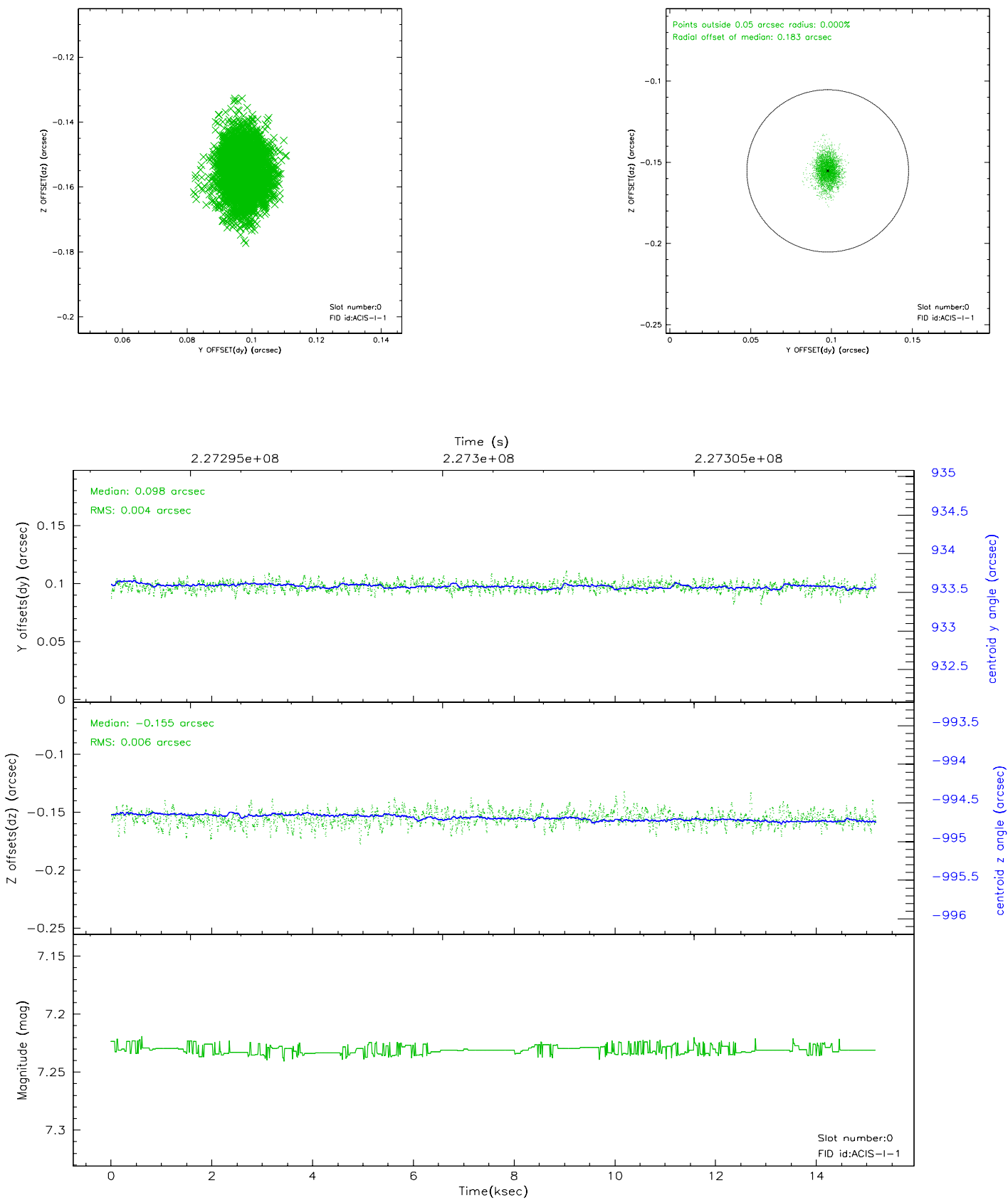


2.4.5 Slot 7

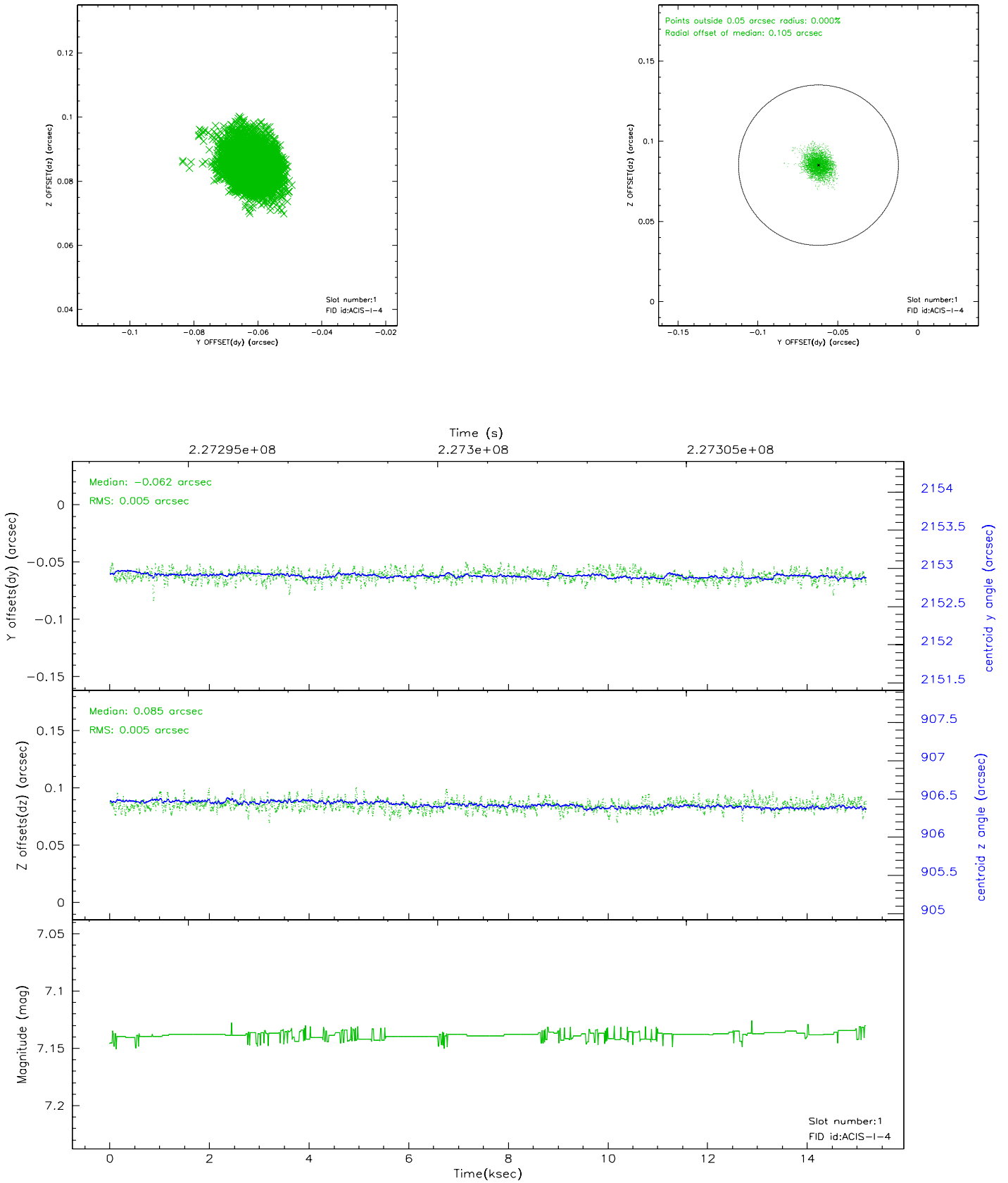


2.5 FID Slots

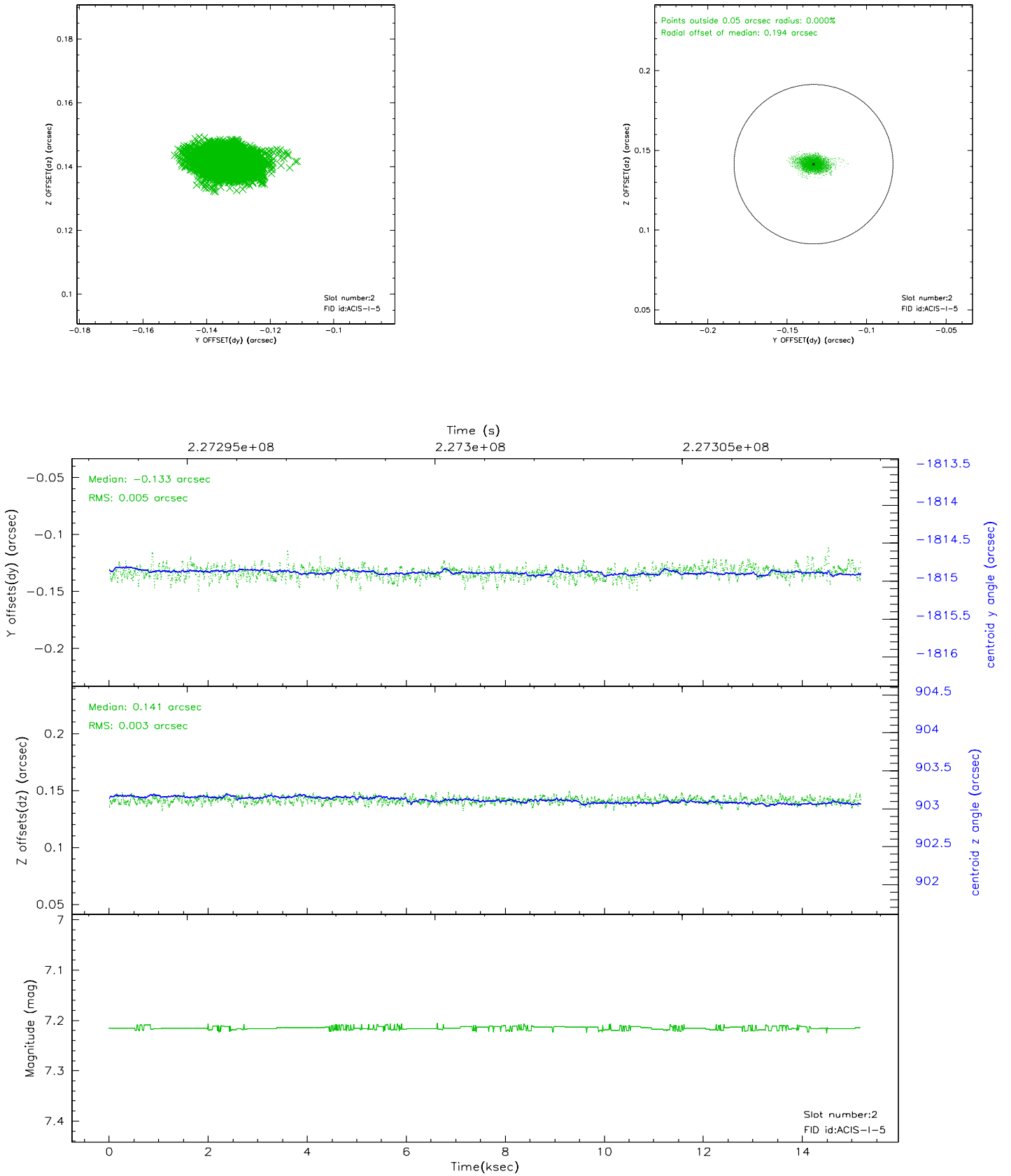
2.5.1 Slot 0



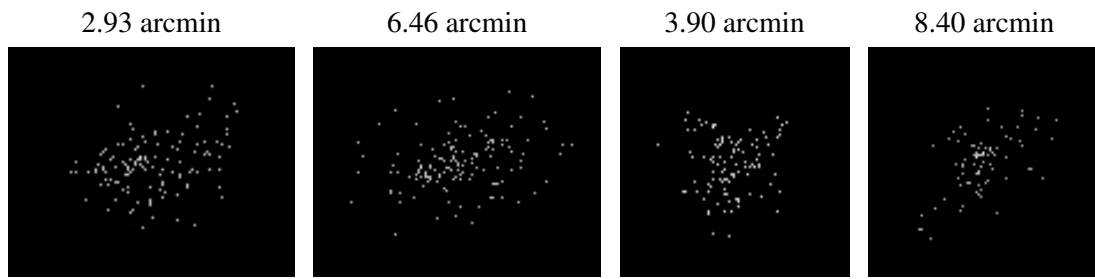
2.5.2 Slot 1



2.5.3 Slot 2



3 Point Sources



A Summary

A.1 Status

V&V Scientist	Jen Lauer
V&V Date (YYYY-MM-DD)	2006.02.27
V&V Edition	1
V&V Disposition and Status	OK
V&V Charge Time	14.77141

A.2 Comments