

V&V Reference Report

L2 ASCDS Version : 7.6.7.1

Observation 5774 - L2 Version 002
Chandra X-Ray Center

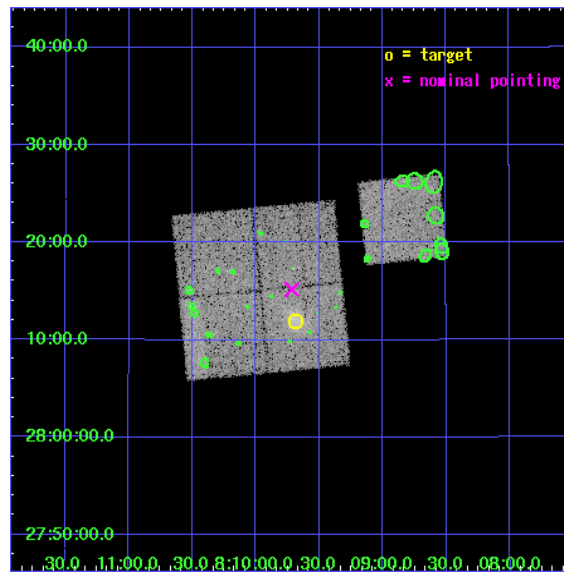
L2 Processing Date : Apr 10 2006

Contents

1	Front	2
2	OBI	3
2.1	OBI	3
2.1.1	Images	3
2.1.2	Bias	3
2.1.3	Parameters	4
2.1.4	Events	4
2.2	Compared Parameters	5
2.3	Aspect	6
2.4	Star Slots	9
2.4.1	Slot 3	9
2.4.2	Slot 4	10
2.4.3	Slot 5	11
2.4.4	Slot 6	12
2.4.5	Slot 7	13
2.5	FID Slots	14
2.5.1	Slot 0	14
2.5.2	Slot 1	15
2.5.3	Slot 2	16
3	Point Sources	17
A	Summary	18
A.1	Status	18
A.2	Comments	18

1 Front

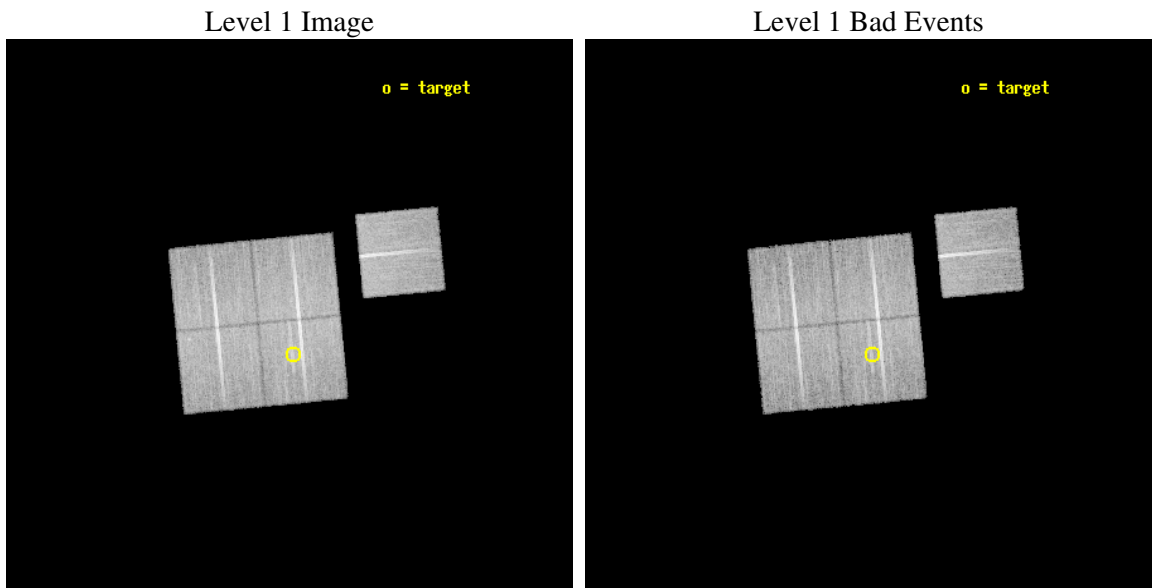
seq_num	800487
obs_id	5774
title	Chandra observations of high-redshift clusters of galaxies from the 400 Square Degrees ROSAT PSPC survey
observer	Dr. Stephen Murray
object	cl0809+2811
dtcycle	0
cycle	P
ra_targ	122.420833
dec_targ	28.199444
ra_nom	122.42897207067
dec_nom	28.253246210536
roll_nom	84.480973542245
revision	2
ontime	19942.258961529
livetime	19681.698666919
ontime0	19939.118001163
ontime1	19942.258971393
ontime2	19942.258961499
ontime3	19942.258961529
ontime6	19939.118001163
l2events	73712



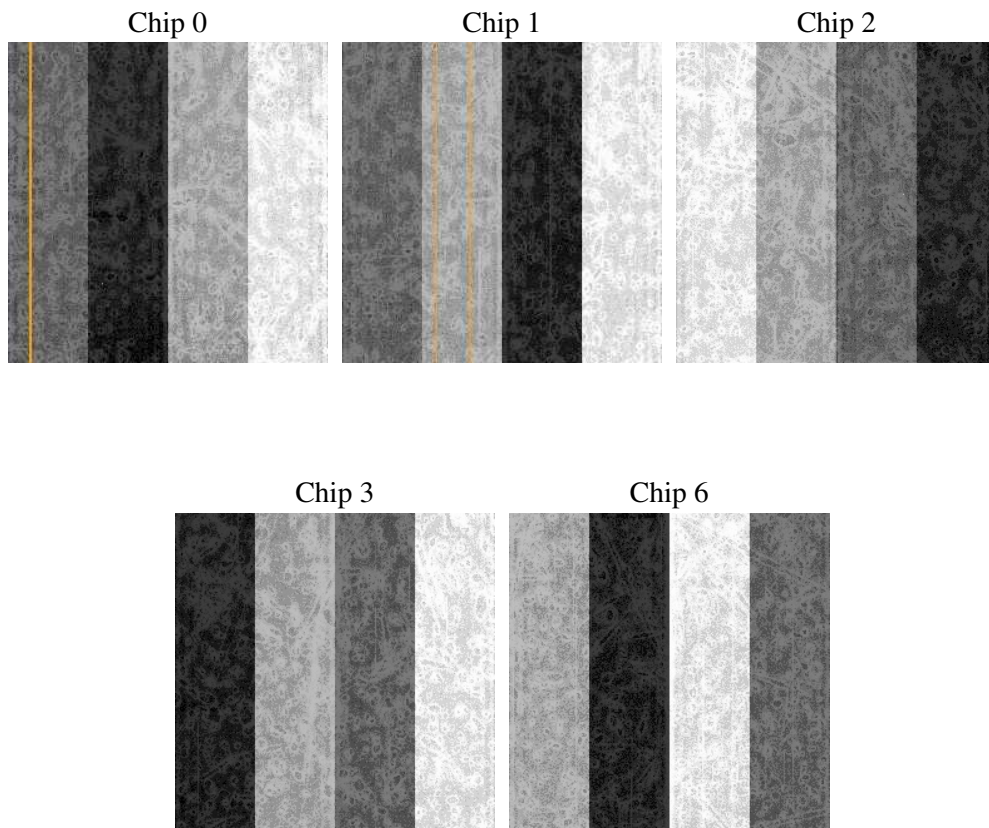
2 OBI

2.1 OBI

2.1.1 Images



2.1.2 Bias



2.1.3 Parameters

obi_num	0
ascdsver	7.6.7.1
caldsver	3.2.1
date	2006-04-10T22:55:39
revision	2

sched_exp_time	20000.000000
ontime	19948.564837307
ontime0	19945.423876941
ontime1	19948.564867049
ontime2	19948.564837277
ontime3	19948.564837307
ontime6	19945.423896819
l1events	653675

2.1.4 Events

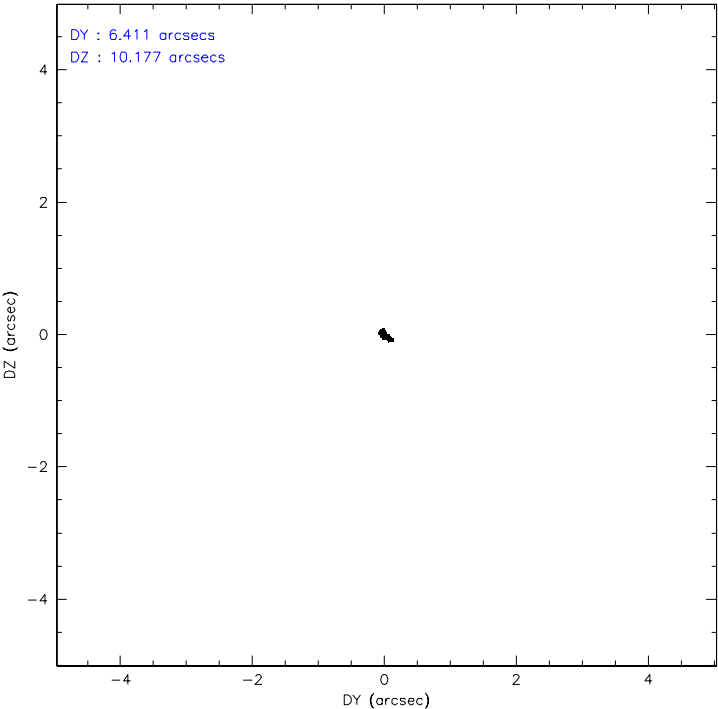
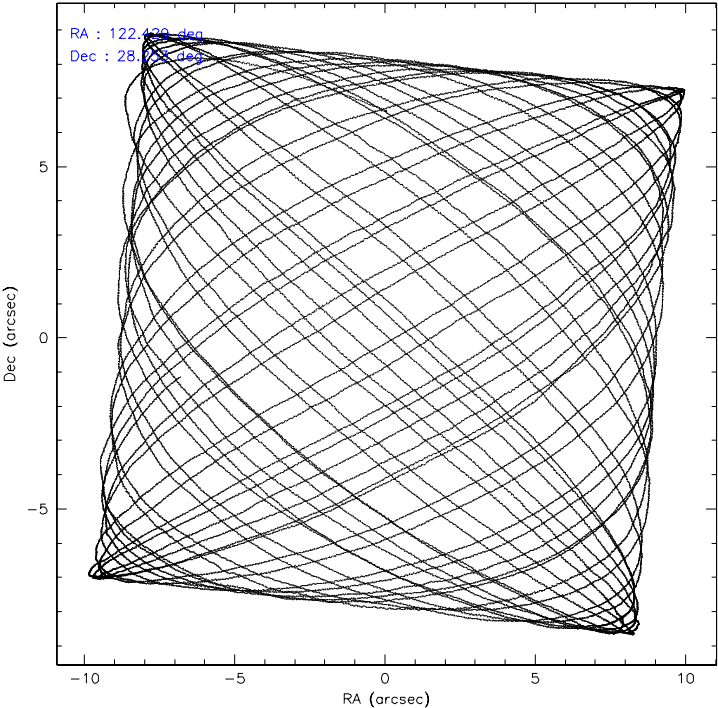
	ccd 0	ccd 1	ccd 2	ccd 3	ccd 6
level 1 events	125077	126583	135319	135025	131671
rejected events	109016	108072	119587	117096	114292
rejected %	87%	85%	88%	86%	86%

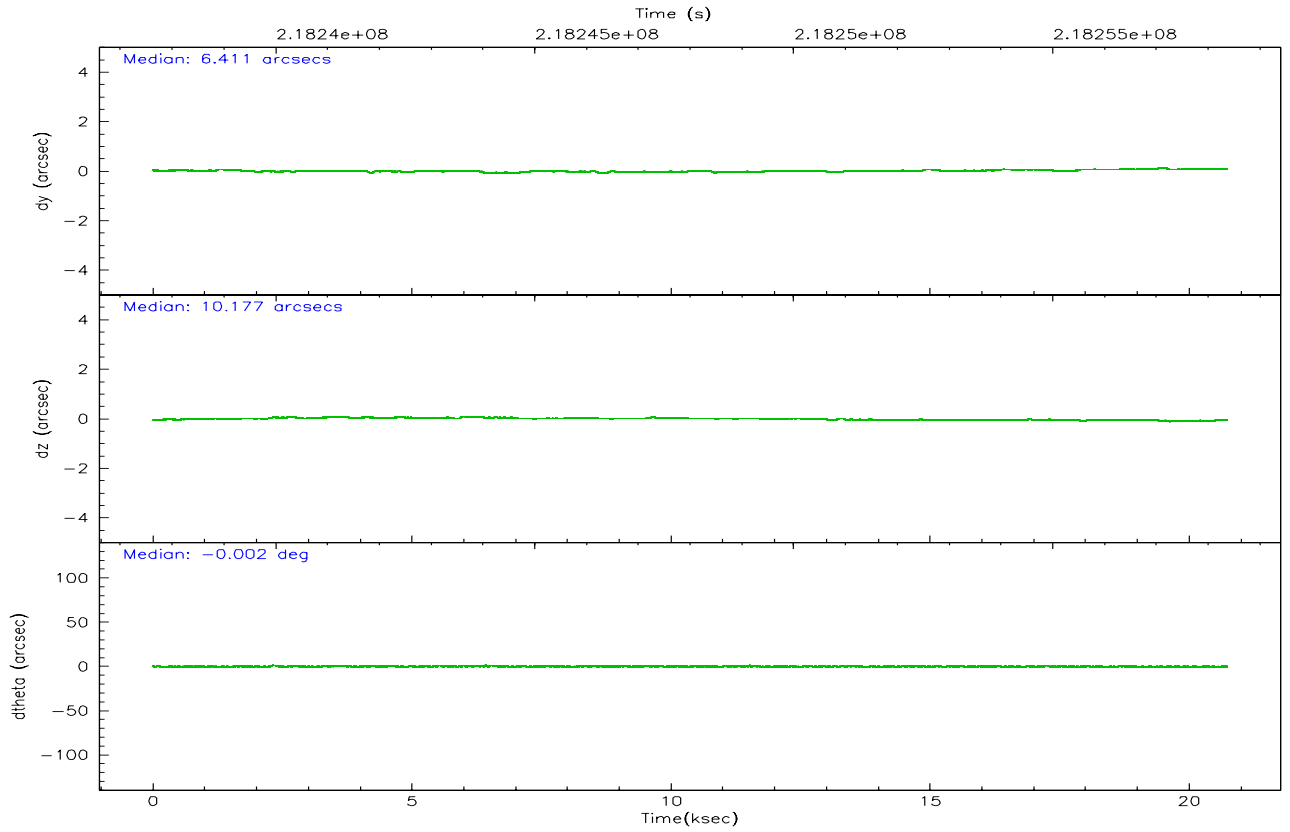
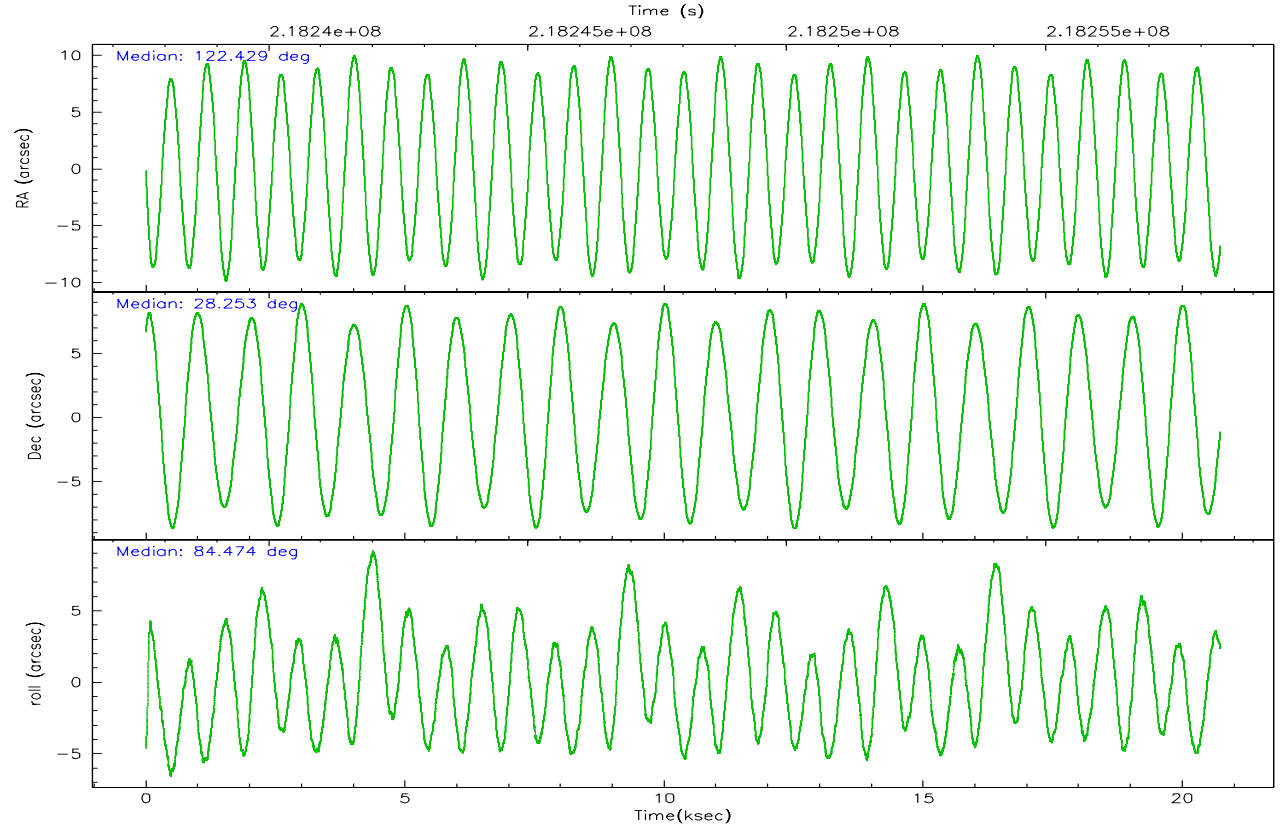
	ccd 0	ccd 1	ccd 2	ccd 3	ccd 6
grade 0 events	6811	8345	6790	8675	7675
	5%	6%	5%	6%	5%
grade 1 events	72	69	96	70	75
	0%	0%	0%	0%	0%
grade 2 events	3395	3636	3243	3226	3267
	2%	2%	2%	2%	2%
grade 3 events	1639	1671	1591	1630	1563
	1%	1%	1%	1%	1%
grade 4 events	1534	1703	1540	1584	1638
	1%	1%	1%	1%	1%
grade 5 events	4516	4705	4233	5045	4877
	3%	3%	3%	3%	3%
grade 6 events	2694	3163	2571	2822	3241
	2%	2%	1%	2%	2%
grade 7 events	104416	103291	115255	111973	109335
	83%	81%	85%	82%	83%

2.2 Compared Parameters

Parameter	Planned	Actual	Parameter	Planned	Actual
Instrument	ACIS	ACIS	Obspar format version number	6	6
Detector	ACIS-01236	ACIS-01236	Obspar file type	PREDICTED	ACTUAL
Grating	NONE	NONE	Obspar update status	NONE	UPDATED
Data mode	VFAINT	VFAINT	On-chip summing requested	N	N
Observation mode	POINTING	POINTING	Subarray requested	NONE	NONE
Pointing RA	122.441998	122.4289720706729	Alternating exposures requested	N	N
Pointing Dec	28.228395	28.25324621053621	Primary exposure time	0.000000	3.1
Pointing Roll	84.266117	84.48097354224507			
SIM focus pos (mm)	-0.782348	-0.7809083437167272			
SIM defocus (mm)	0	0.001439871863259334			
SIM translation stage pos (mm)	-225.840463	-225.8433433320239			
SIM translation stage offset (mm)	-7.752	-7.749109670905796			
Observation start time	218238365.184000	218237163.36602			
Observation start date	2004-11-30T21:45:01	2004-11-30T21:26:03			
Observation end time	218258365.184000	218259477.10452			
Observation end date	2004-12-01T03:18:21	2004-12-01T03:37:57			
Read mode	TIMED	TIMED			

2.3 Aspect



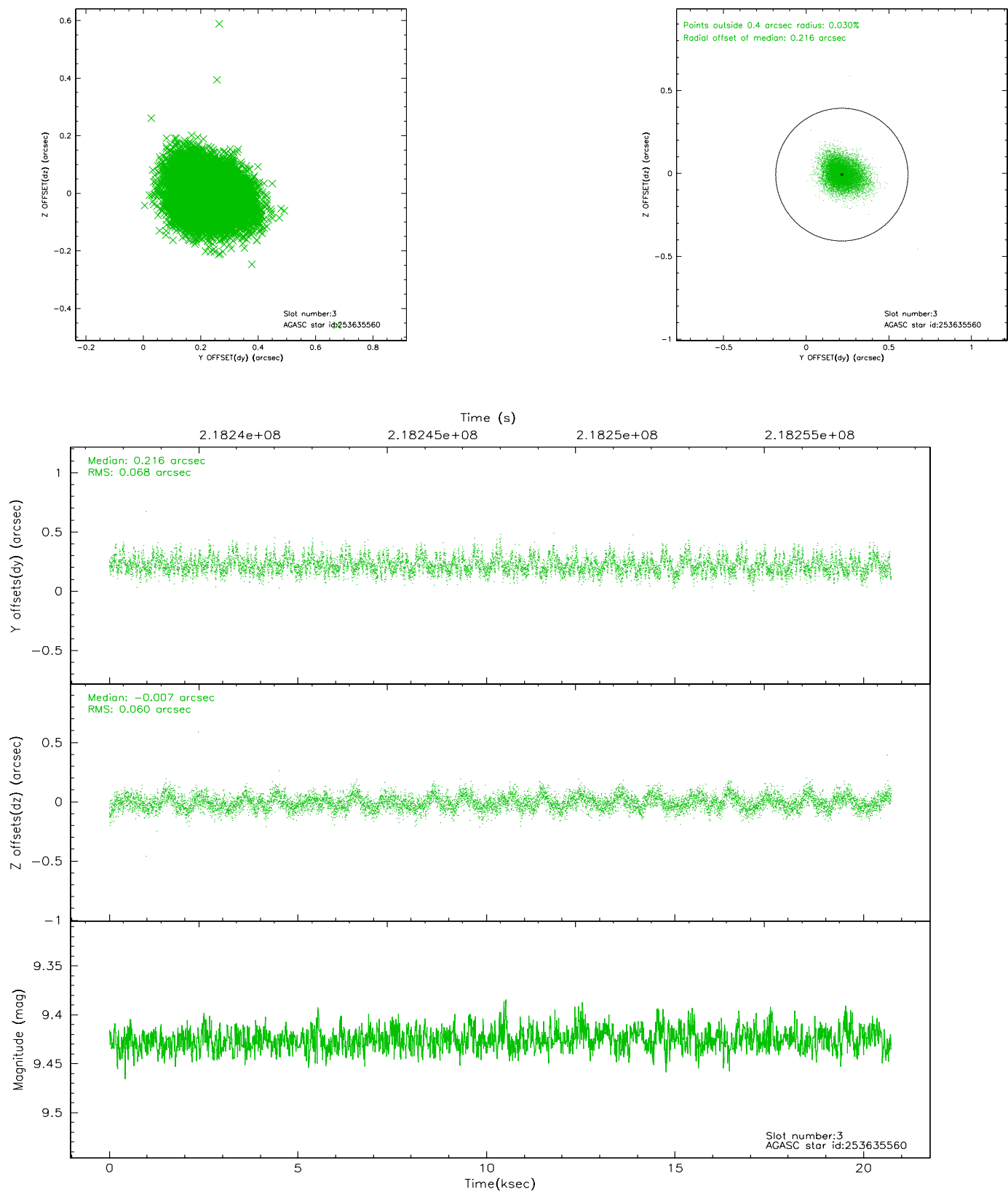


Slot Statistics

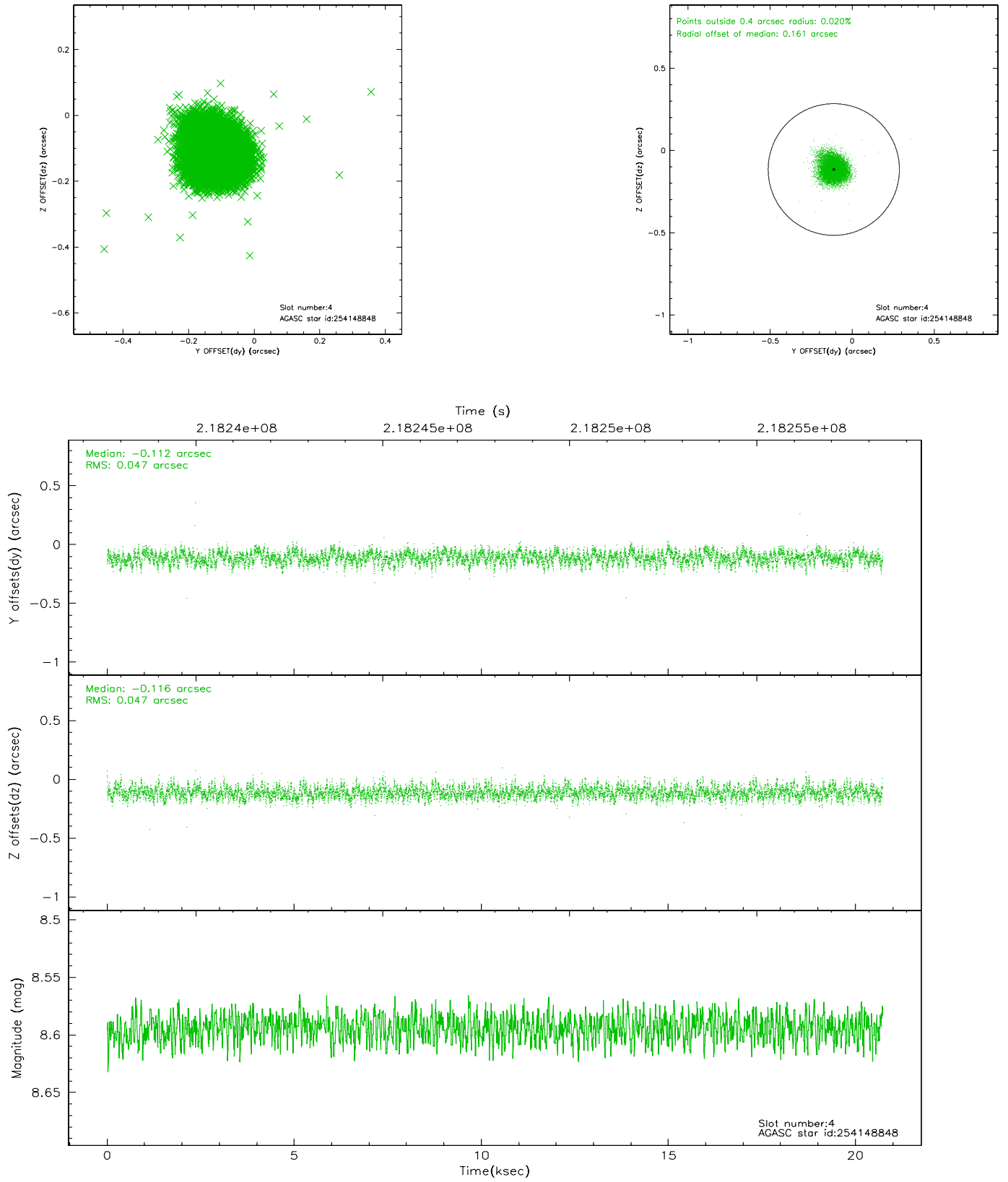
slot	status	id	mag	n_pts	med_dy	med_dz	dr1	dr2	ra	dec	mean_y	mean_z
0	FID	ACIS-I-1	7.23	5055	0.084	-0.077	0.006	0.010	0.000000	0.000000	933.21	-992.81
1	FID	ACIS-I-5	7.22	5055	-0.204	0.081	0.006	0.010	0.000000	0.000000	-1815.08	904.73
2	FID	ACIS-I-6	7.25	5057	0.029	0.067	0.006	0.010	0.000000	0.000000	398.52	1549.42
3	GUIDE	253635560	9.43	10107	0.216	-0.007	0.096	0.157	121.891540	27.828640	-1602.79	1600.02
4	GUIDE	254148848	8.59	10111	-0.112	-0.116	0.071	0.114	121.812561	28.591838	1108.02	2110.99
5	GUIDE	254149176	8.45	10113	0.029	-0.060	0.059	0.094	122.392823	28.196326	-130.17	143.60
6	GUIDE	254149440	9.34	10108	-0.022	-0.036	0.093	0.149	122.072793	28.597278	1206.55	1294.07
7	GUIDE	254157960	8.76	10105	-0.112	0.216	0.082	0.136	123.082877	28.757444	2102.84	-1820.95

2.4 Star Slots

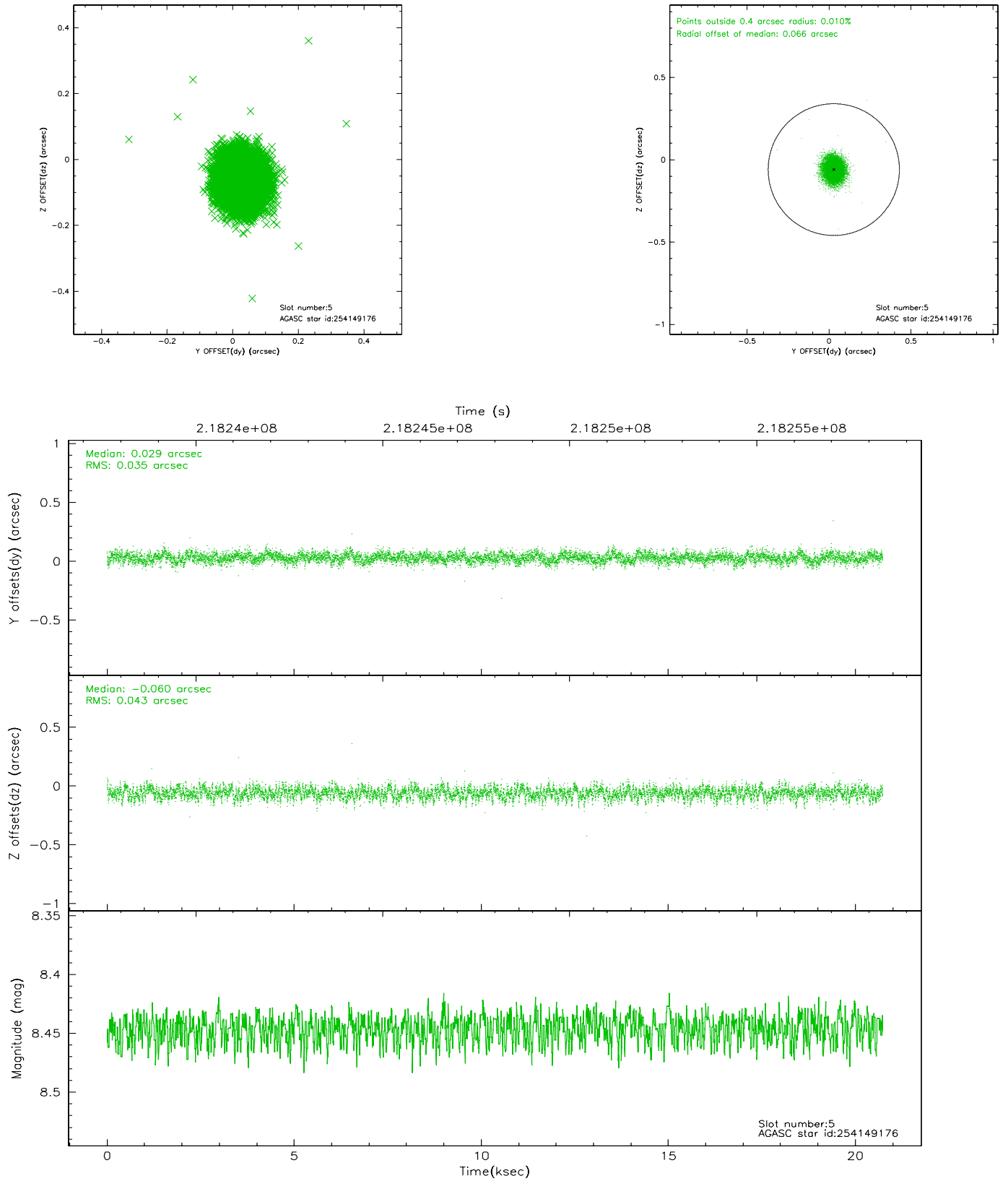
2.4.1 Slot 3



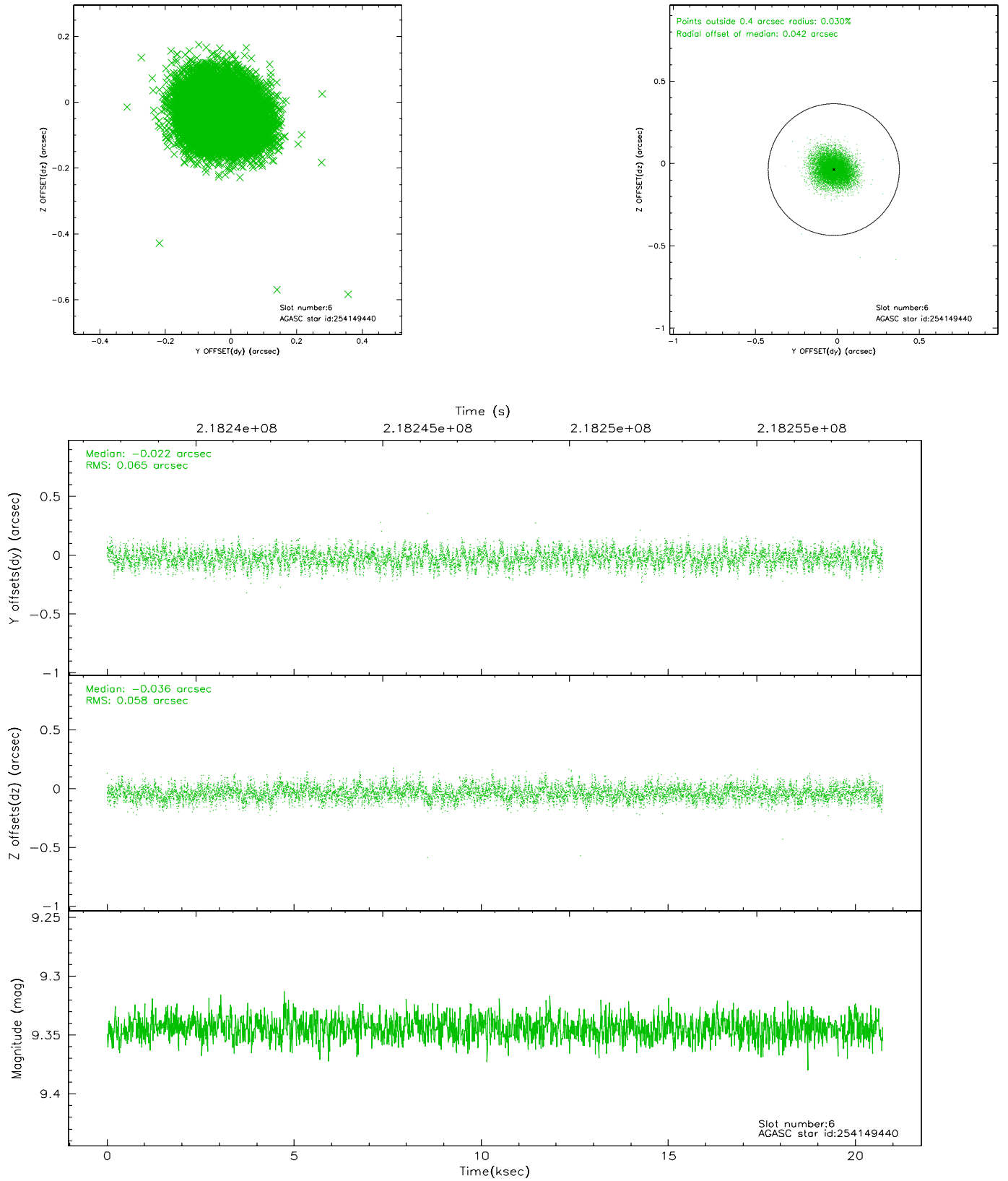
2.4.2 Slot 4



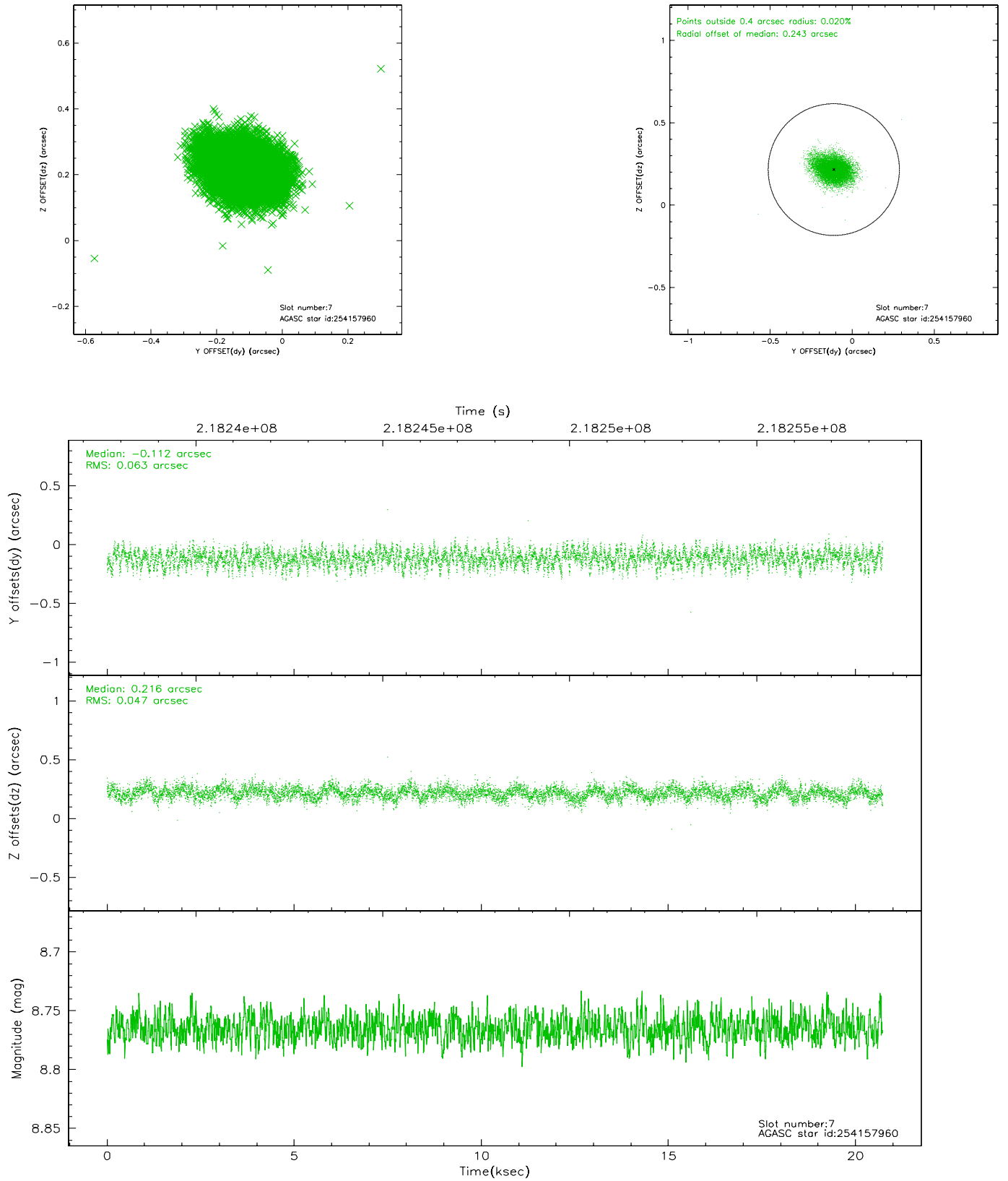
2.4.3 Slot 5



2.4.4 Slot 6

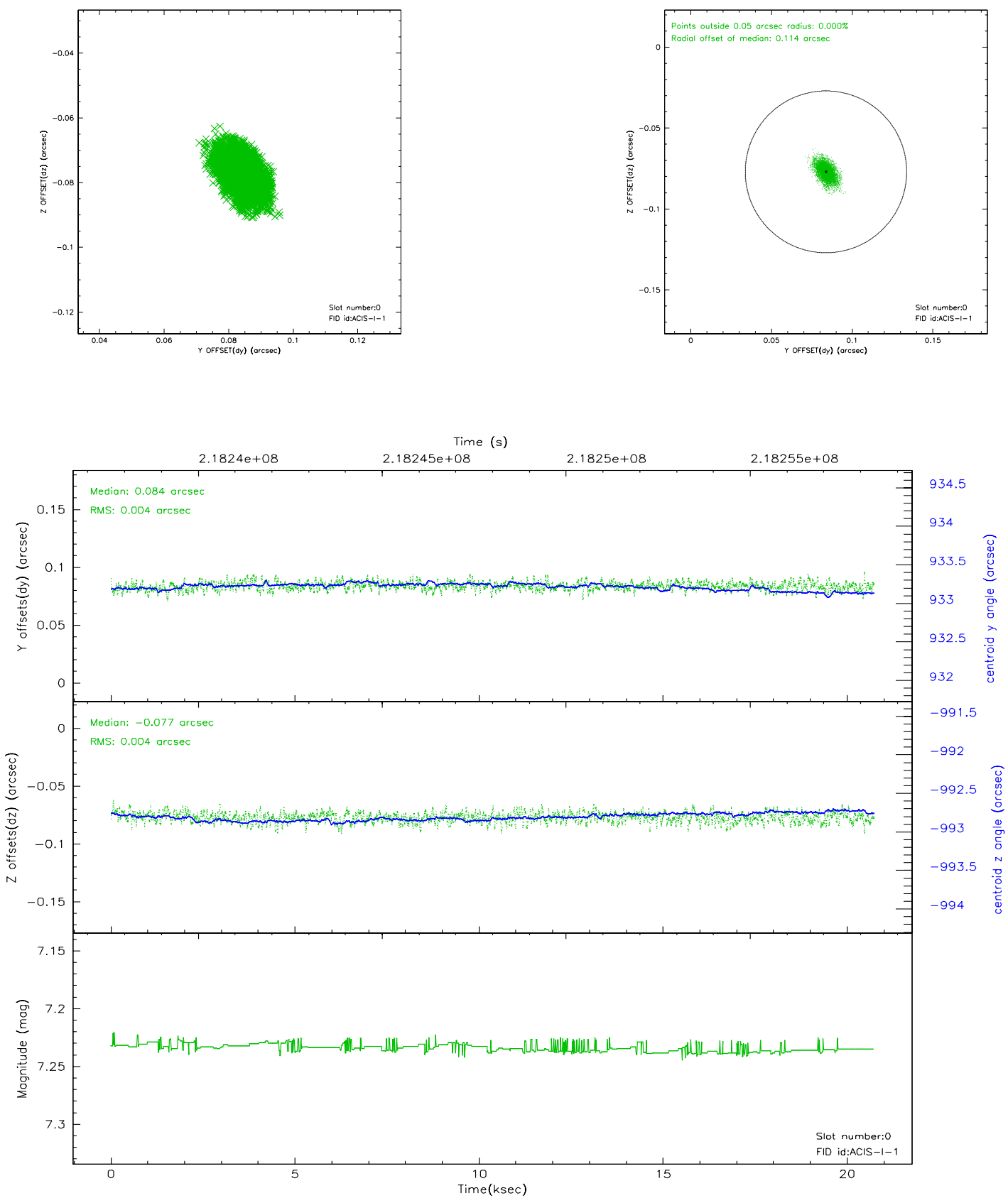


2.4.5 Slot 7

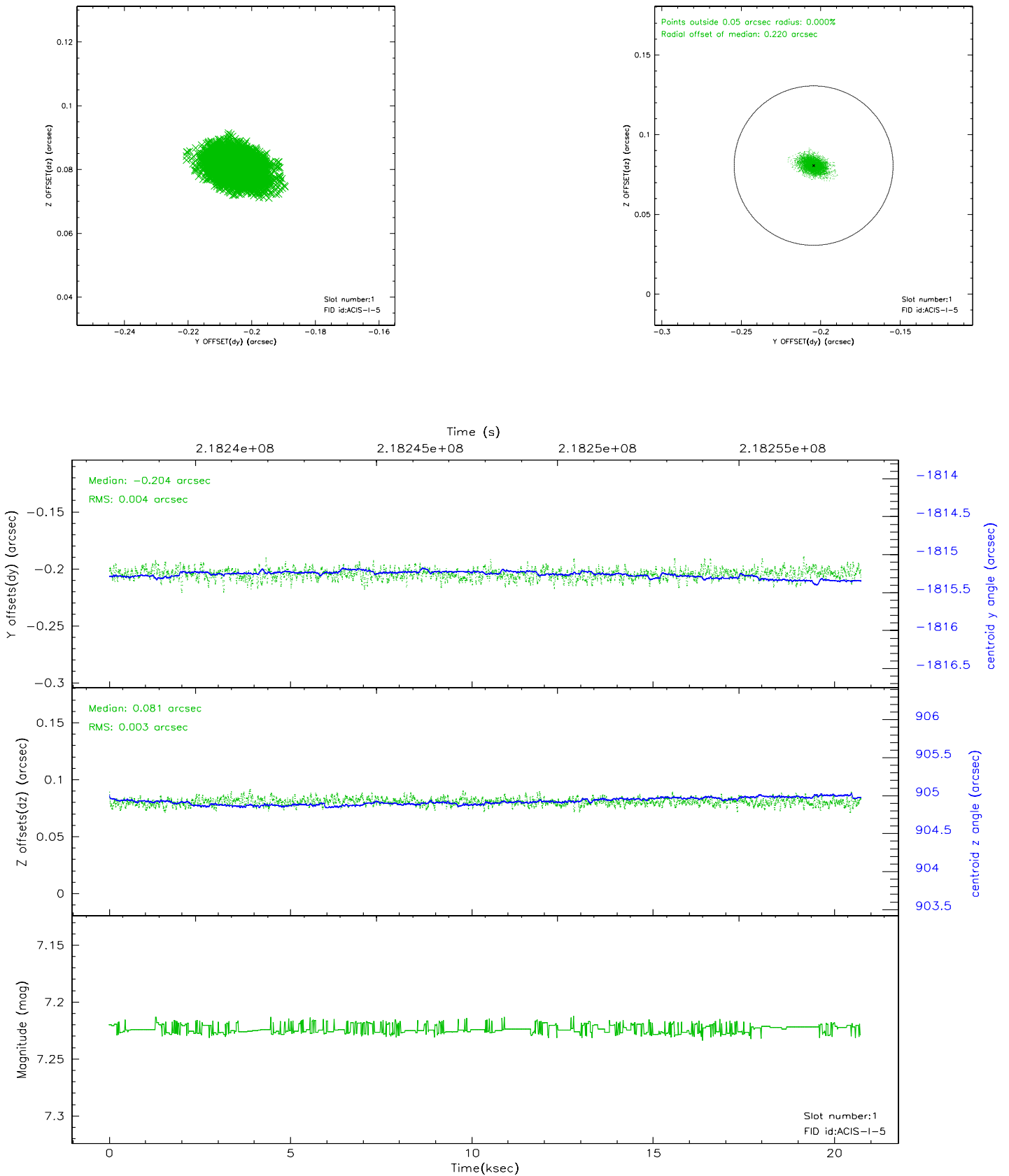


2.5 FID Slots

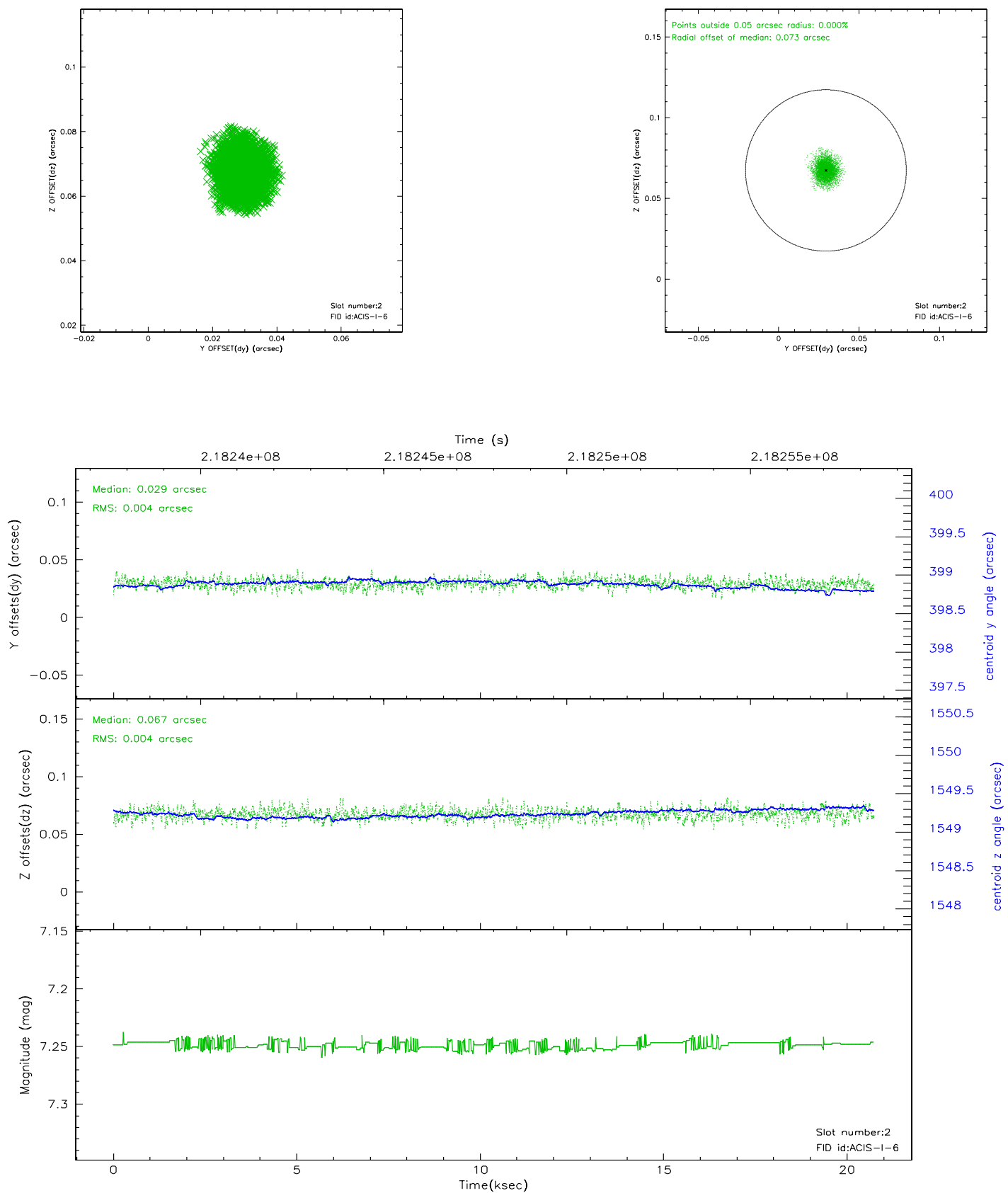
2.5.1 Slot 0



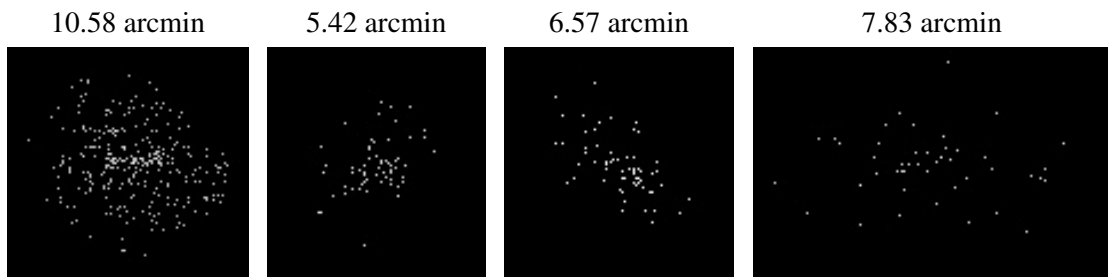
2.5.2 Slot 1



2.5.3 Slot 2



3 Point Sources



A Summary

A.1 Status

V&V Scientist	Jen Lauer
V&V Date (YYYY-MM-DD)	2006.04.11
V&V Edition	1
V&V Disposition and Status	OK
V&V Charge Time	19.94225

A.2 Comments