

V&V Reference Report

L2 ASCDS Version : 7.6.7

Observation 5758 - L2 Version 002
Chandra X-Ray Center

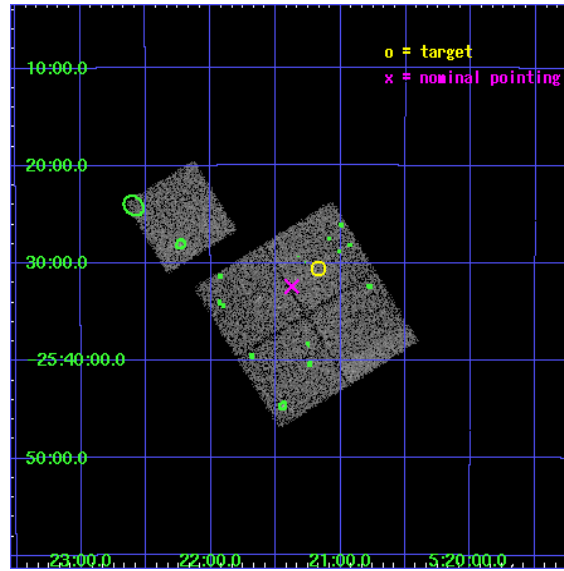
L2 Processing Date: Feb 15 2006

Contents

1	Front	2
2	OBI	3
2.1	OBI	3
2.1.1	Images	3
2.1.2	Bias	3
2.1.3	Parameters	4
2.1.4	Events	4
2.2	Compared Parameters	5
2.3	Aspect	6
2.4	Star Slots	9
2.4.1	Slot 3	9
2.4.2	Slot 4	10
2.4.3	Slot 5	11
2.4.4	Slot 6	12
2.4.5	Slot 7	13
2.5	FID Slots	14
2.5.1	Slot 0	14
2.5.2	Slot 1	15
2.5.3	Slot 2	16
3	Point Sources	17
A	Summary	18
A.1	Status	18
A.2	Comments	18

1 Front

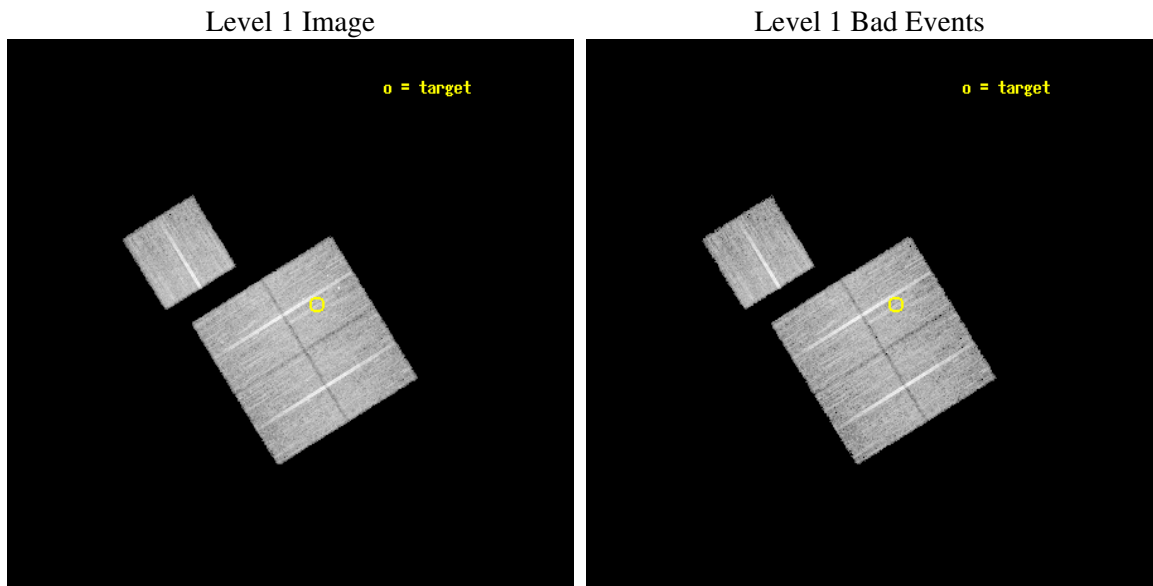
seq_num	800471
obs_id	5758
title	DARK ENERGY WITH X-RAY CLUSTERS: CHANDRA OBSERVATIONS OF 41 HIGH-REDSHIFT CLUSTERS FROM THE 400 deg^2 ROSAT PSPC SURVEY
observer	Dr Alexey Vikhlinin
object	cl0521-2530
dtcycle	0
cycle	P
ra_targ	80.29375
dec_targ	-25.51
ra_nom	80.343756015709
dec_nom	-25.540148678736
roll_nom	328.31699583563
revision	2
ontime	15162.099970847
livetime	14963.995972553
ontime0	15162.099970847
ontime1	15162.099970847
ontime2	15158.95898059
ontime3	15162.099970847
ontime6	15158.958990604
l2events	37642



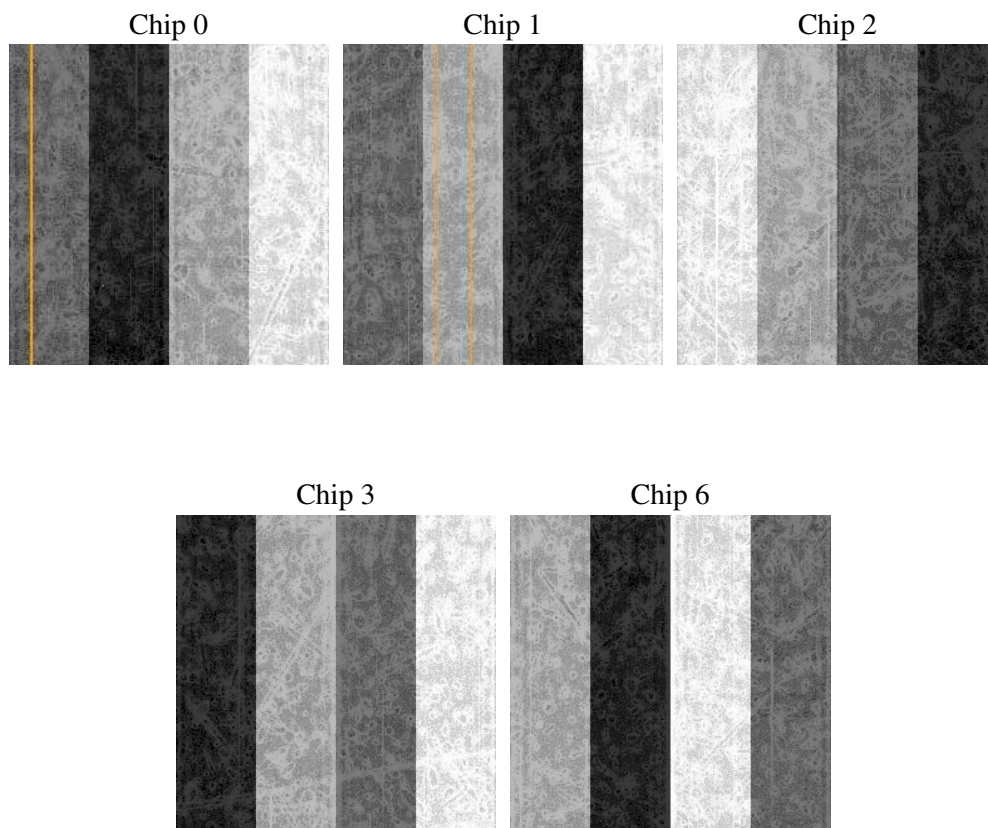
2 OBI

2.1 OBI

2.1.1 Images



2.1.2 Bias



2.1.3 Parameters

obi_num	0
ascdsver	7.6.7
caldbver	3.2.1
date	2006-02-16T01:37:08
revision	2

sched_exp_time	15000.000000
ontime	15334.420131356
ontime0	15334.420131356
ontime1	15334.420131356
ontime2	15331.279141098
ontime3	15334.420131356
ontime6	15331.279131174
llevents	437533

2.1.4 Events

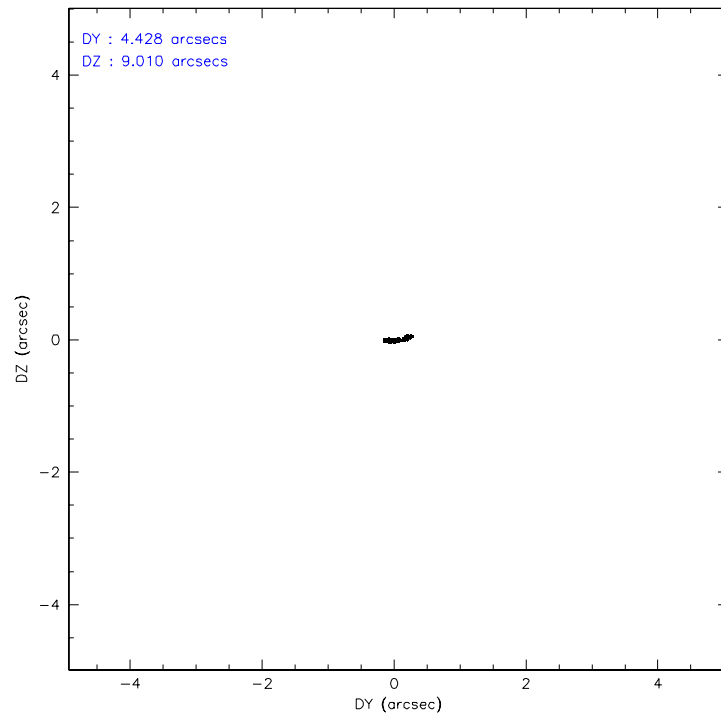
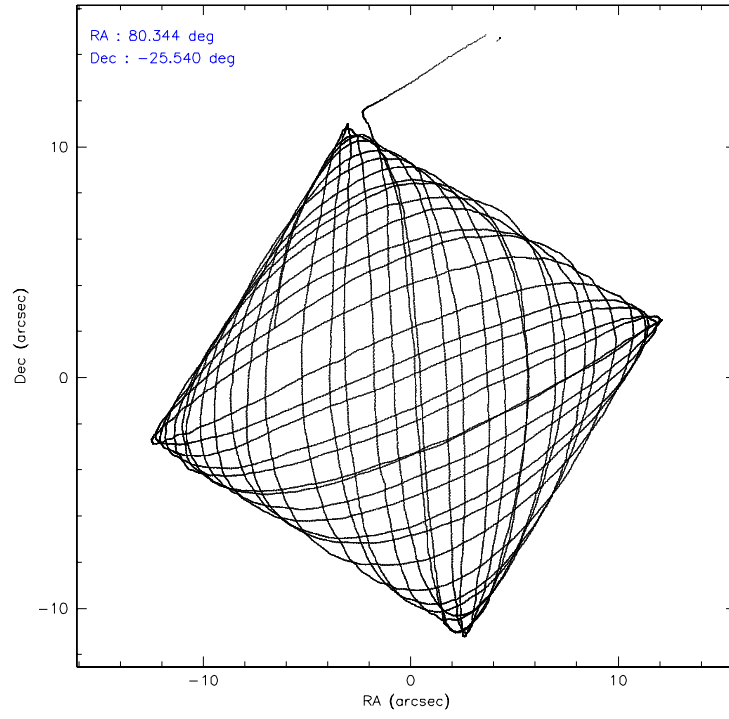
	ccd 0	ccd 1	ccd 2	ccd 3	ccd 6
level 1 events	83575	81285	91981	91639	89053
rejected events	74547	71489	83494	82678	80071
rejected %	89%	87%	90%	90%	89%

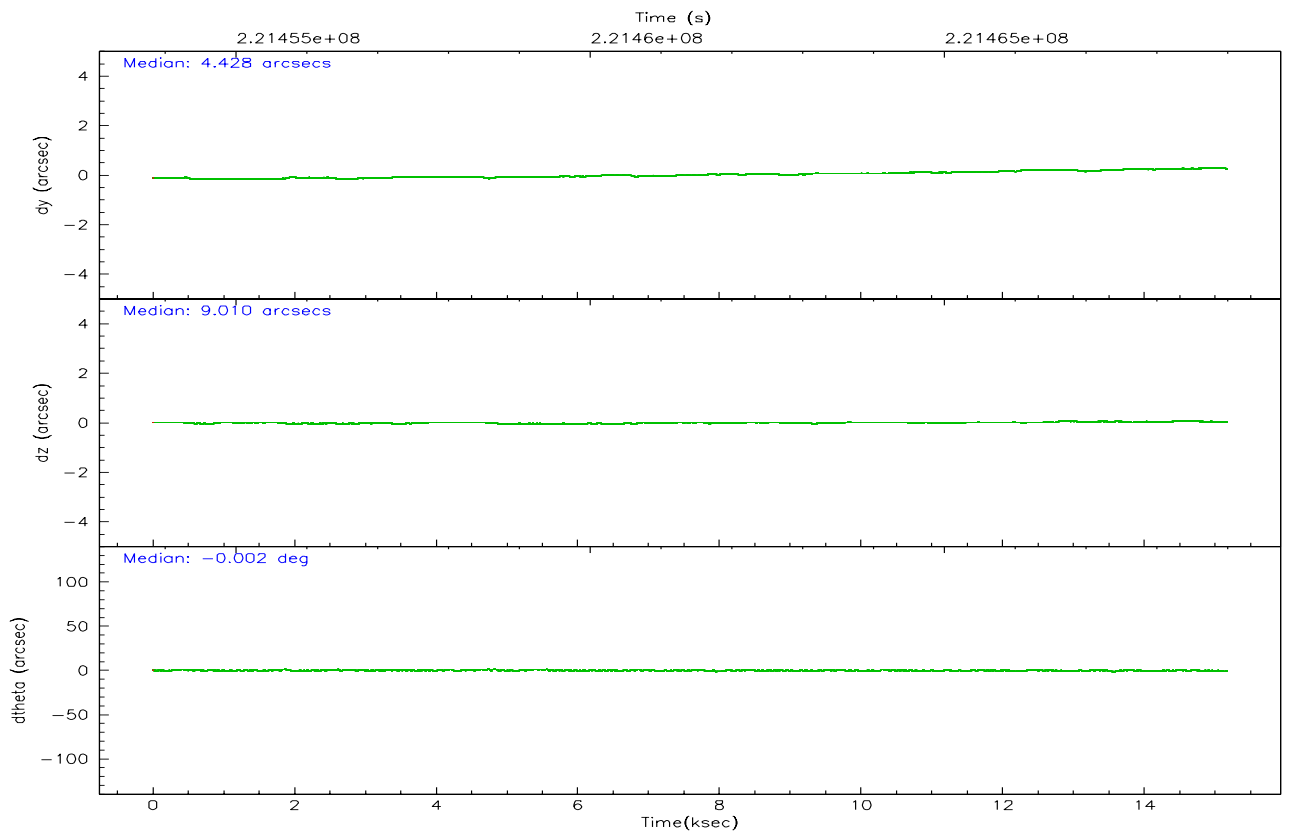
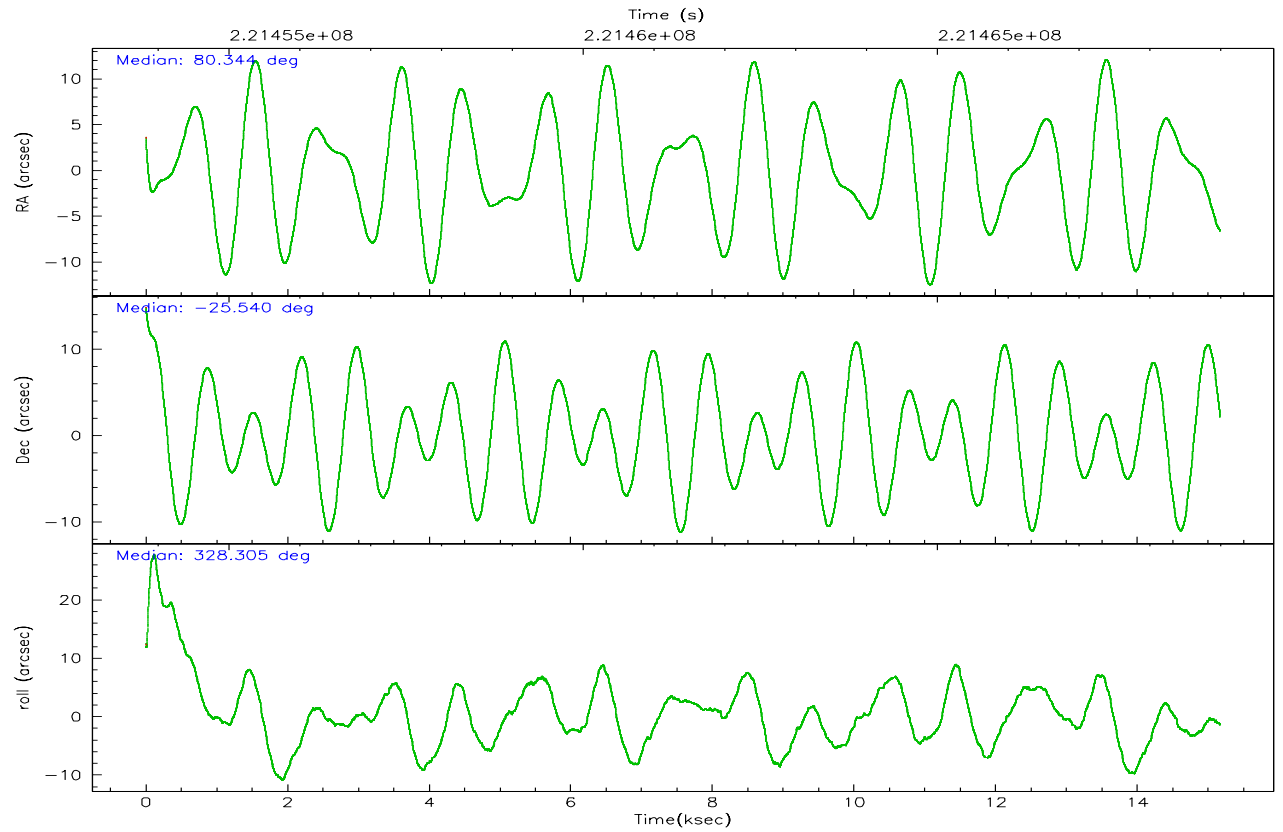
	ccd 0	ccd 1	ccd 2	ccd 3	ccd 6
grade 0 events	3245	3574	3137	3531	3103
	3%	4%	3%	3%	3%
grade 1 events	38	47	48	54	31
	0%	0%	0%	0%	0%
grade 2 events	2145	2136	1951	1917	1976
	2%	2%	2%	2%	2%
grade 3 events	1045	1097	978	935	1083
	1%	1%	1%	1%	1%
grade 4 events	994	1092	984	981	1058
	1%	1%	1%	1%	1%
grade 5 events	3170	3329	3131	3547	3435
	3%	4%	3%	3%	3%
grade 6 events	1729	2002	1542	1695	1877
	2%	2%	1%	1%	2%
grade 7 events	71209	68008	80210	78979	76490
	85%	83%	87%	86%	85%

2.2 Compared Parameters

Parameter	Planned	Actual	Parameter	Planned	Actual
Instrument	ACIS	ACIS	Obspar format version number	6	6
Detector	ACIS-01236	ACIS-01236	Obspar file type	PREDICTED	ACTUAL
Grating	NONE	NONE	Obspar update status	NONE	UPDATED
Data mode	VFAINT	VFAINT	On-chip summing requested	N	N
Observation mode	POINTING	POINTING	Subarray requested	NONE	NONE
Pointing RA	80.313425	80.34375601570873	Alternating exposures requested	N	N
Pointing Dec	-25.539511	-25.54014867873576	Primary exposure time	0.000000	3.1
Pointing Roll	328.095258	328.3169958356259			
SIM focus pos (mm)	-0.782348	-0.7809083437167272			
SIM defocus (mm)	0	0.001439871863259334			
SIM translation stage pos (mm)	-225.840463	-225.8433433320239			
SIM translation stage offset (mm)	-7.752	-7.749109670905796			
Observation start time	221453996.184000	221452928.29831			
Observation start date	2005-01-07T02:58:52	2005-01-07T02:42:08			
Observation end time	221468996.184000	221469777.24907			
Observation end date	2005-01-07T07:08:52	2005-01-07T07:22:57			
Read mode	TIMED	TIMED			

2.3 Aspect



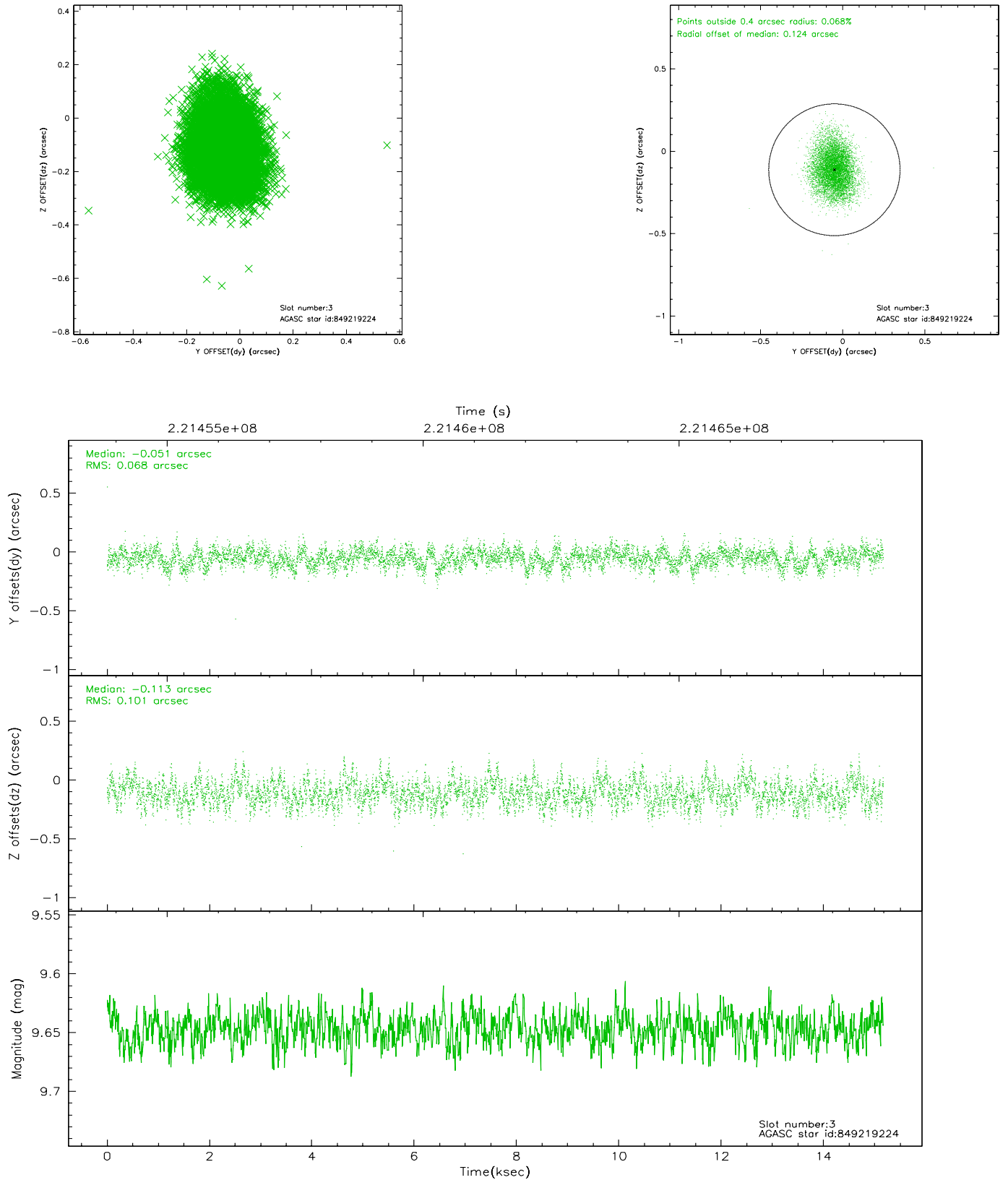


Slot Statistics

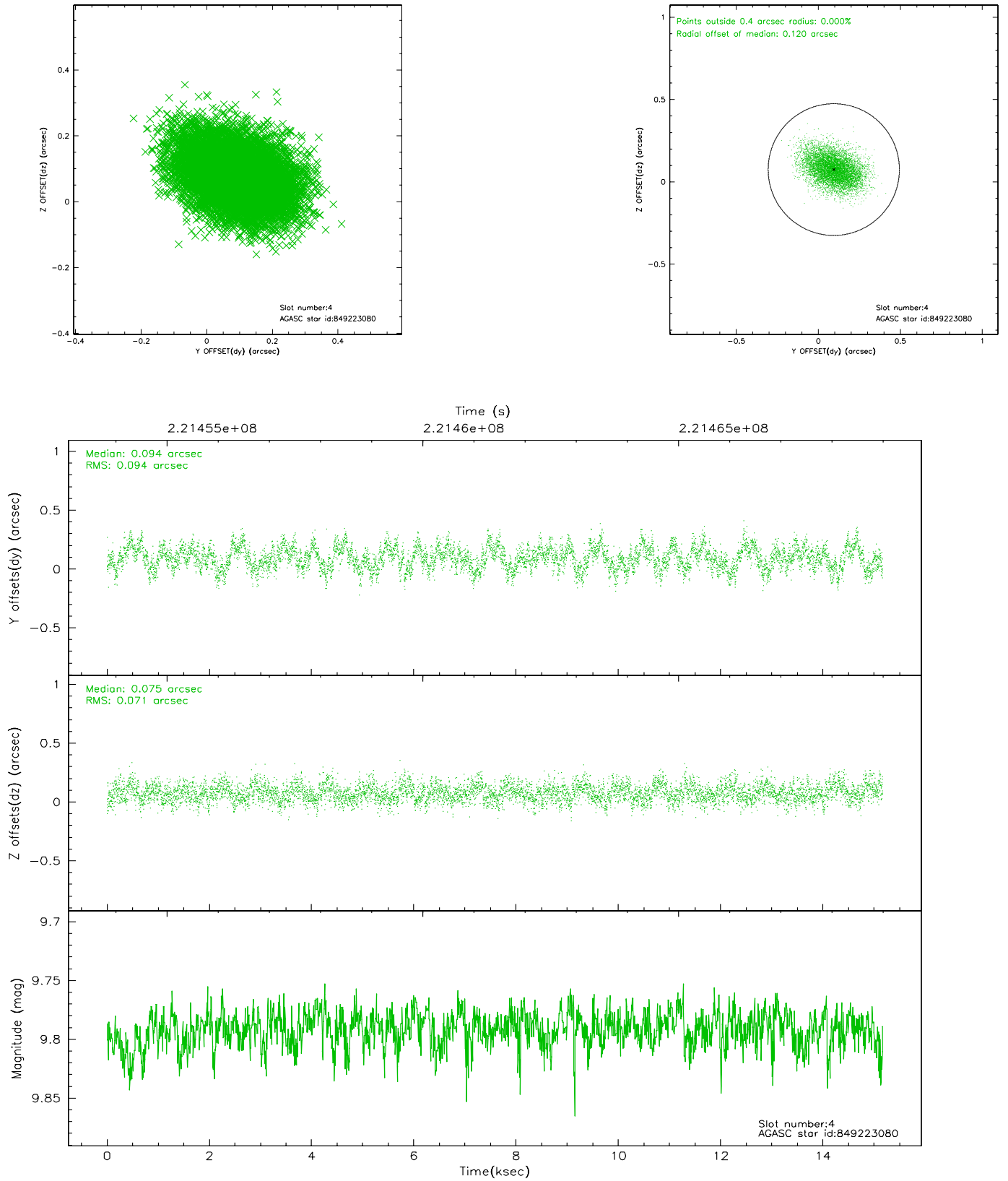
slot	status	id	mag	n_pts	med_dy	med_dz	dr1	dr2	ra	dec	mean_y	mean_z
0	FID	ACIS-I-1	7.23	3700	0.065	-0.039	0.008	0.012	0.000000	0.000000	935.22	-991.57
1	FID	ACIS-I-5	7.22	3700	-0.229	0.062	0.007	0.012	0.000000	0.000000	-1813.02	905.82
2	FID	ACIS-I-6	7.25	3700	0.072	0.049	0.009	0.014	0.000000	0.000000	400.45	1550.65
3	GUIDE	849219224	9.65	7390	-0.051	-0.113	0.129	0.209	79.917999	-26.007007	-194.96	-2106.48
4	GUIDE	849223080	9.79	7396	0.094	0.075	0.126	0.205	80.051501	-24.976586	-1796.13	1267.59
5	GUIDE	849225368	9.90	7396	0.072	0.173	0.151	0.238	80.439195	-25.283120	-140.23	1000.30
6	GUIDE	849226272	8.40	7396	0.031	0.053	0.068	0.112	80.214822	-25.538553	-273.31	-166.05
7	BAD	849226688	5.43	3700	-0.282	-0.381	0.062	0.098	79.879916	-25.124188	-1988.51	520.04

2.4 Star Slots

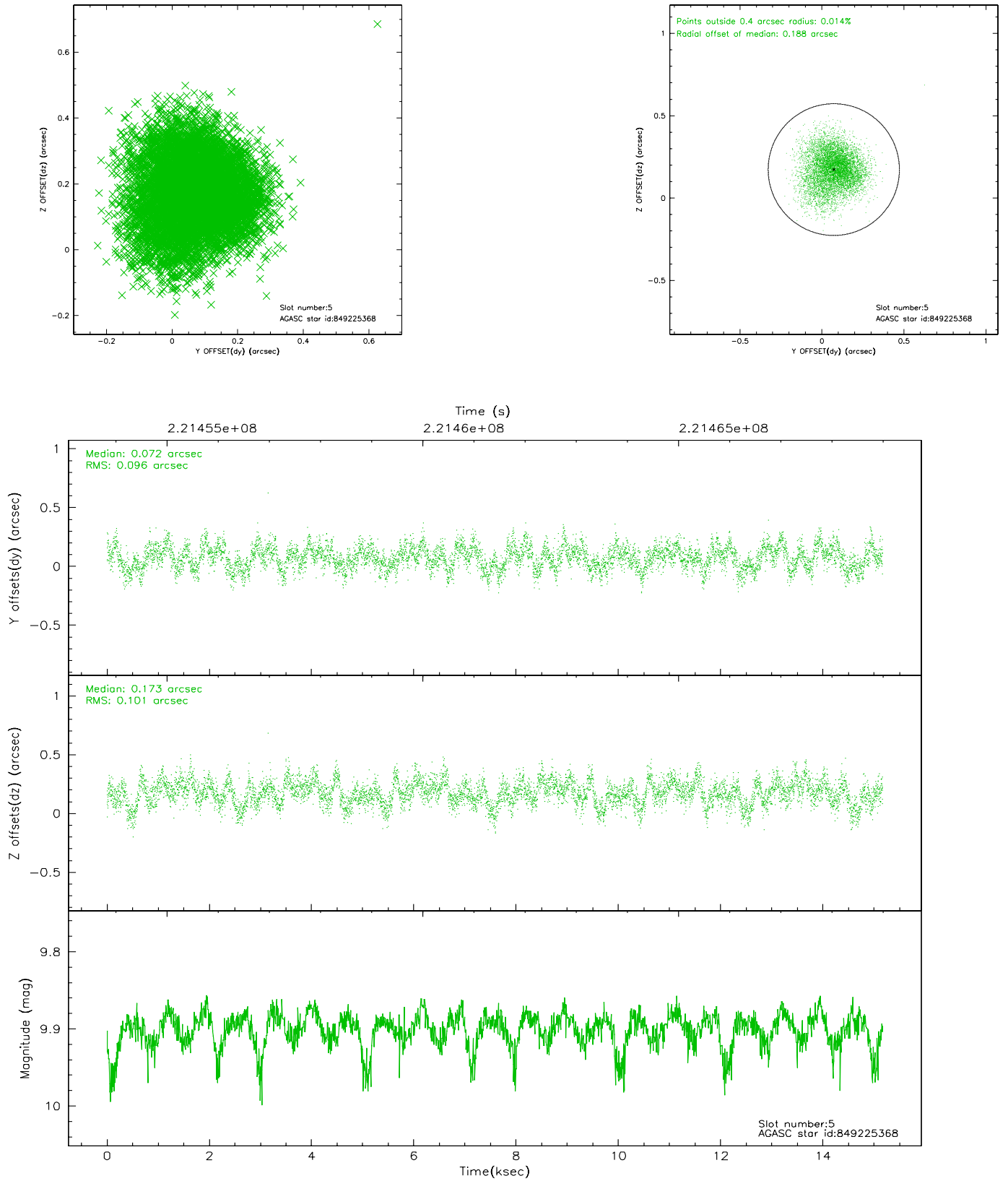
2.4.1 Slot 3



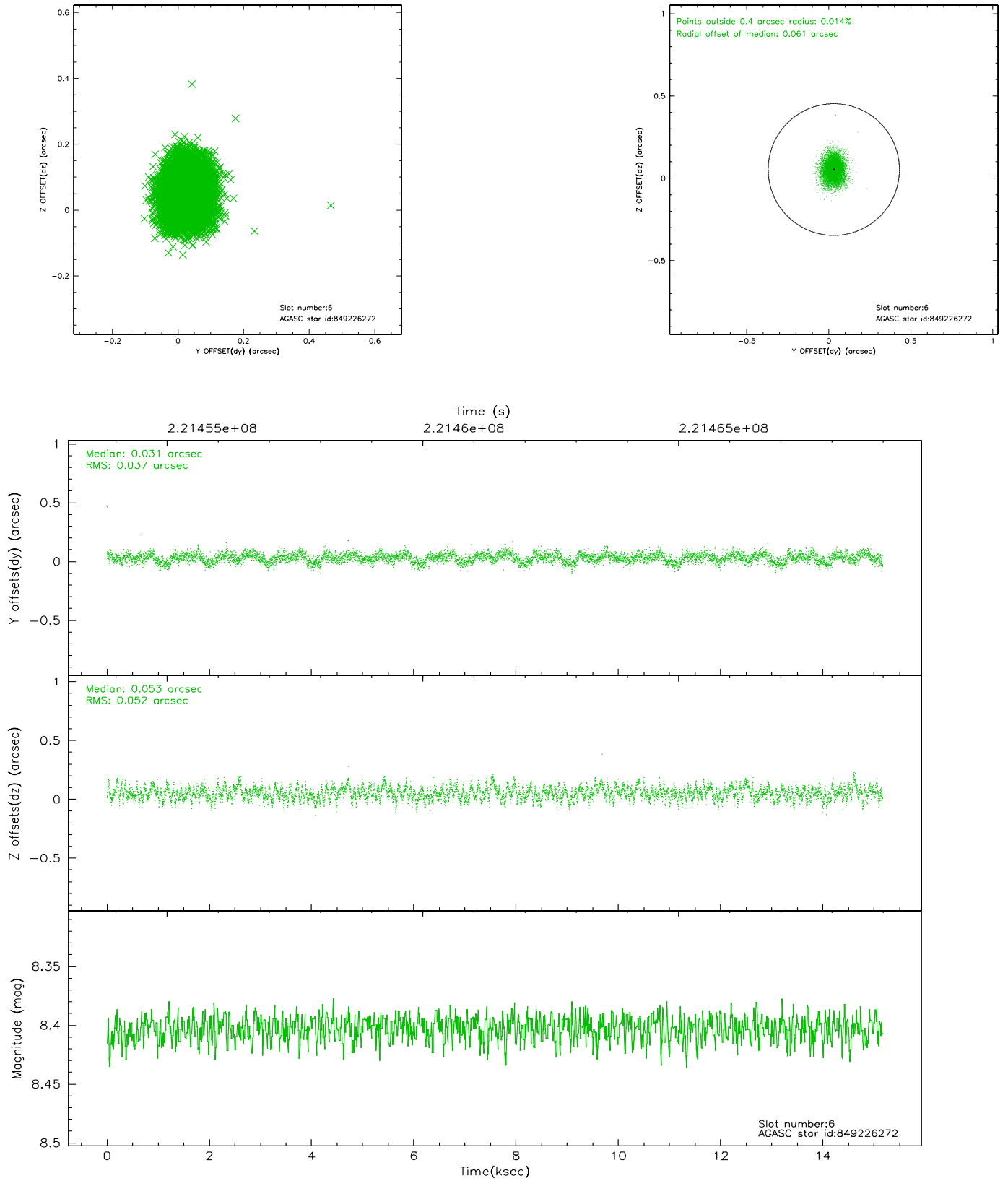
2.4.2 Slot 4



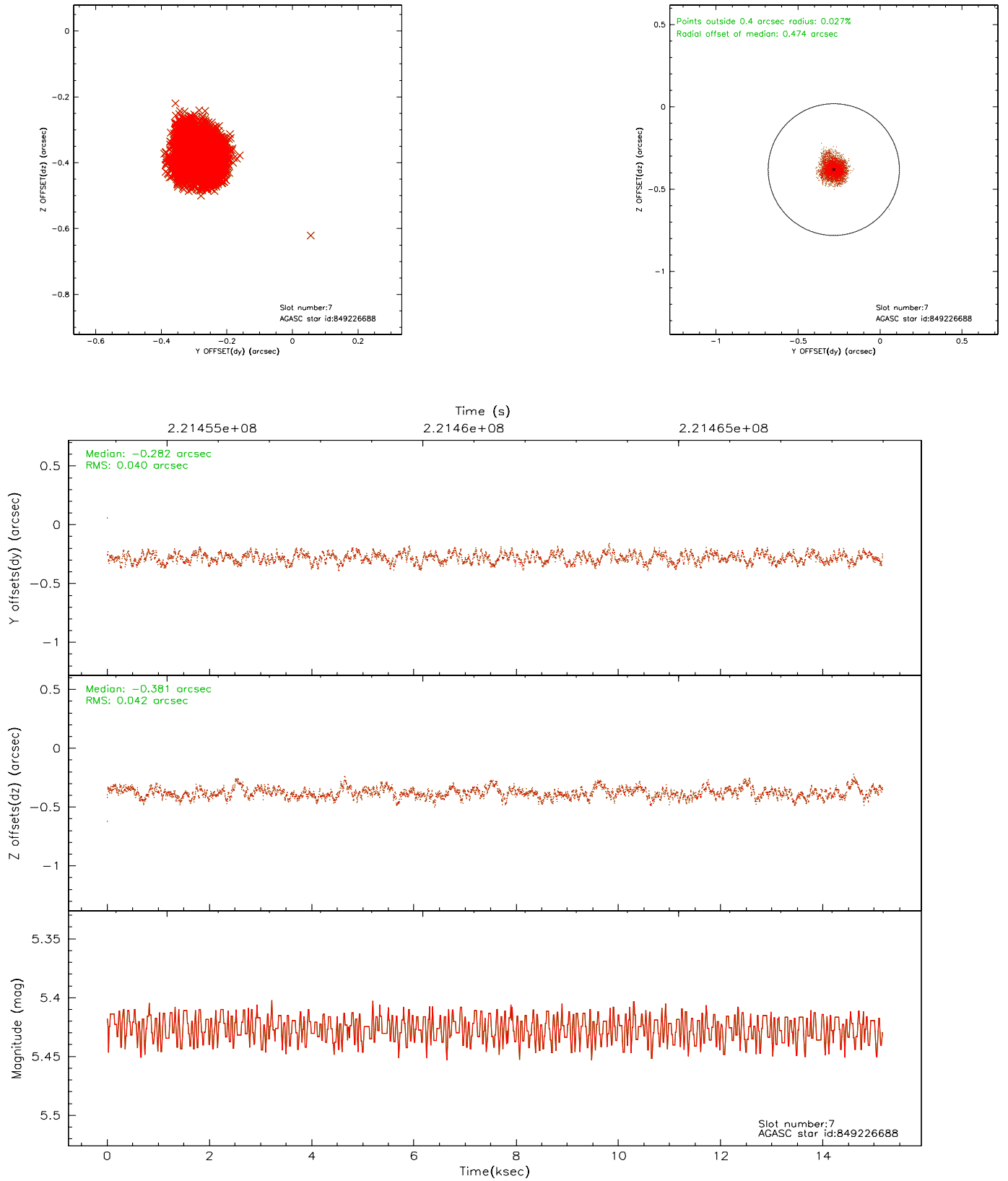
2.4.3 Slot 5



2.4.4 Slot 6

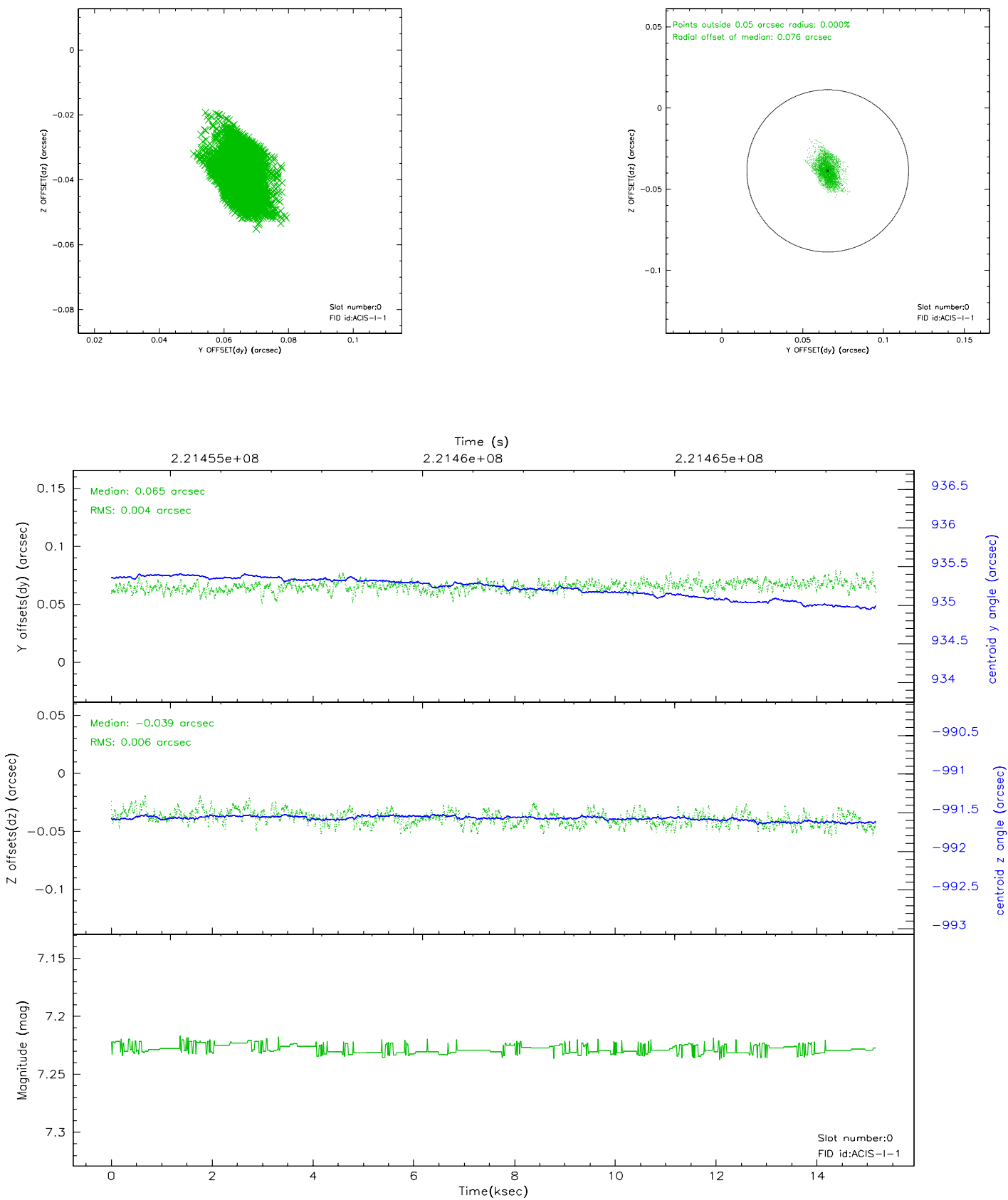


2.4.5 Slot 7

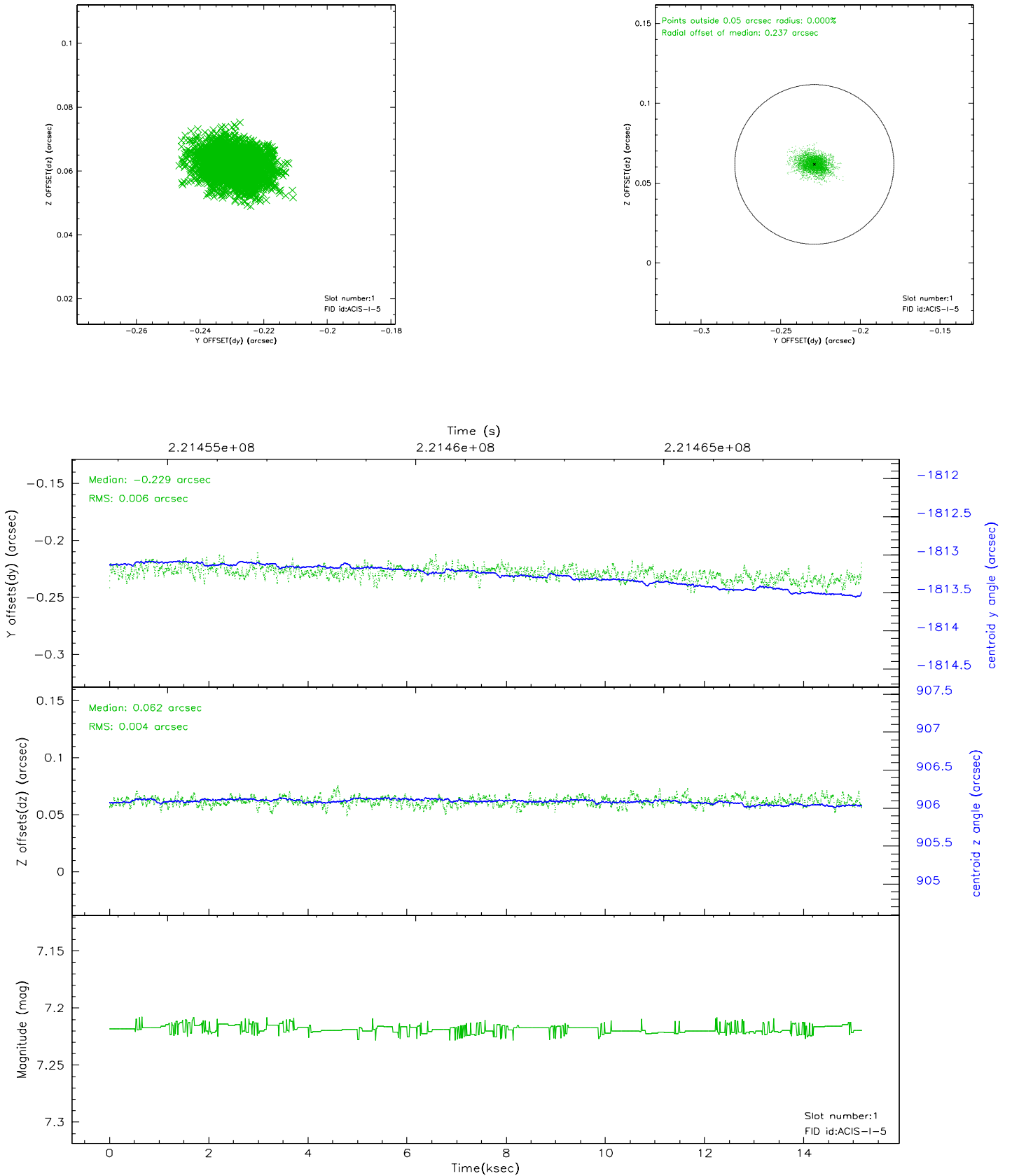


2.5 FID Slots

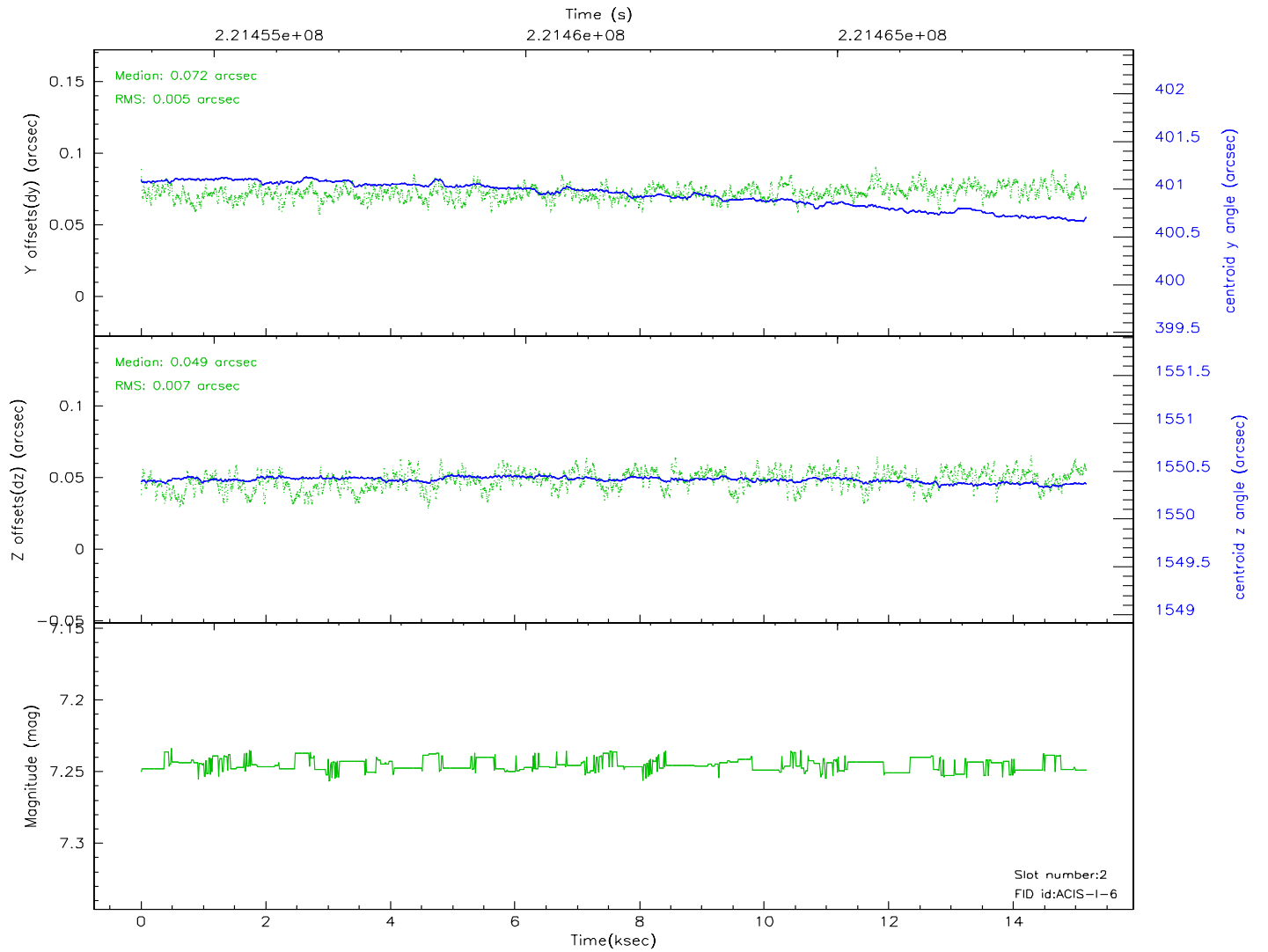
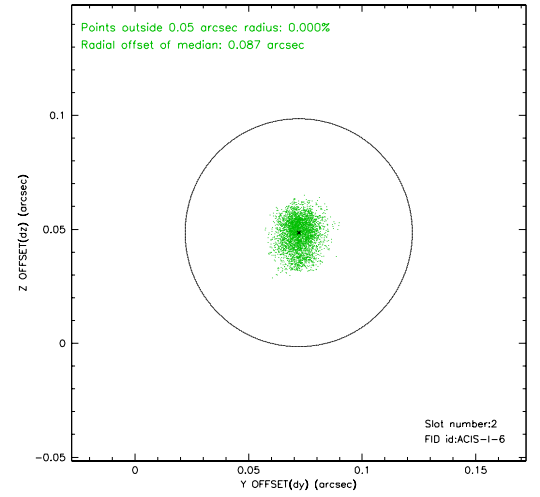
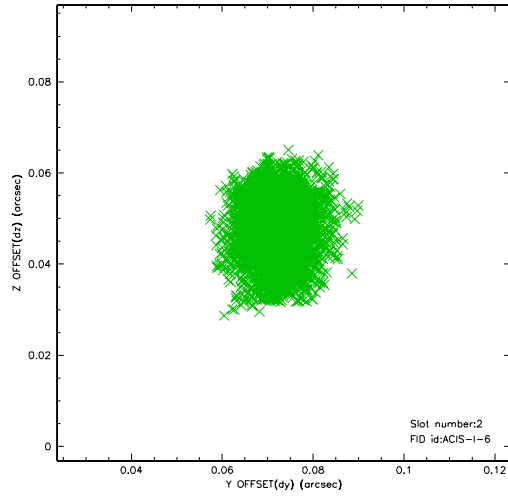
2.5.1 Slot 0



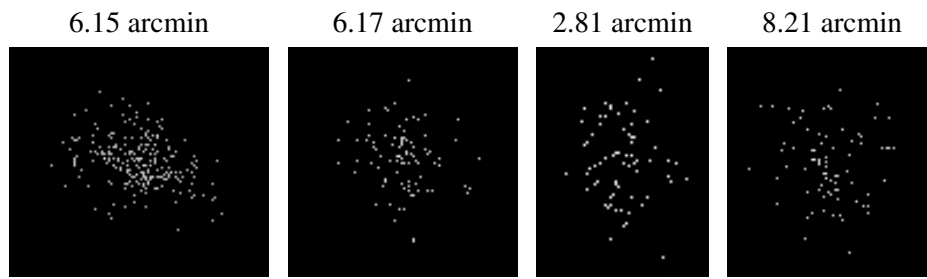
2.5.2 Slot 1



2.5.3 Slot 2



3 Point Sources



A Summary

A.1 Status

V&V Scientist	Jen Lauer
V&V Date (YYYY-MM-DD)	2006.02.16
V&V Edition	1
V&V Disposition and Status	OK
V&V Charge Time	15.16209

A.2 Comments

Charge time:

Using existing charge time of 15.16209.

Slot seven not included in the aspect solution.