

V&V Reference Report

L2 ASCDS Version : 7.6.7.1

Observation 6359 - L2 Version 002
Chandra X-Ray Center

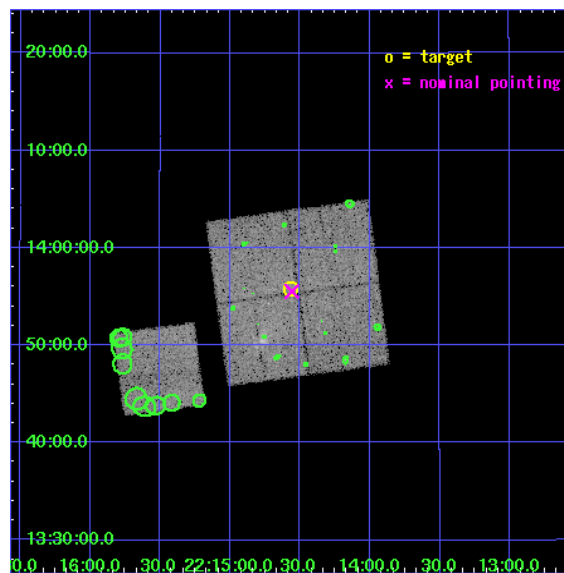
L2 Processing Date : Mar 31 2006

Contents

1	Front	2
2	OBI	3
2.1	OBI	3
2.1.1	Images	3
2.1.2	Bias	3
2.1.3	Parameters	4
2.1.4	Events	4
2.2	Compared Parameters	5
2.3	Aspect	6
2.4	Star Slots	9
2.4.1	Slot 3	9
2.4.2	Slot 4	10
2.4.3	Slot 5	11
2.4.4	Slot 6	12
2.4.5	Slot 7	13
2.5	FID Slots	14
2.5.1	Slot 0	14
2.5.2	Slot 1	15
2.5.3	Slot 2	16
3	Point Sources	17
A	Summary	18
A.1	Status	18
A.2	Comments	18

1 Front

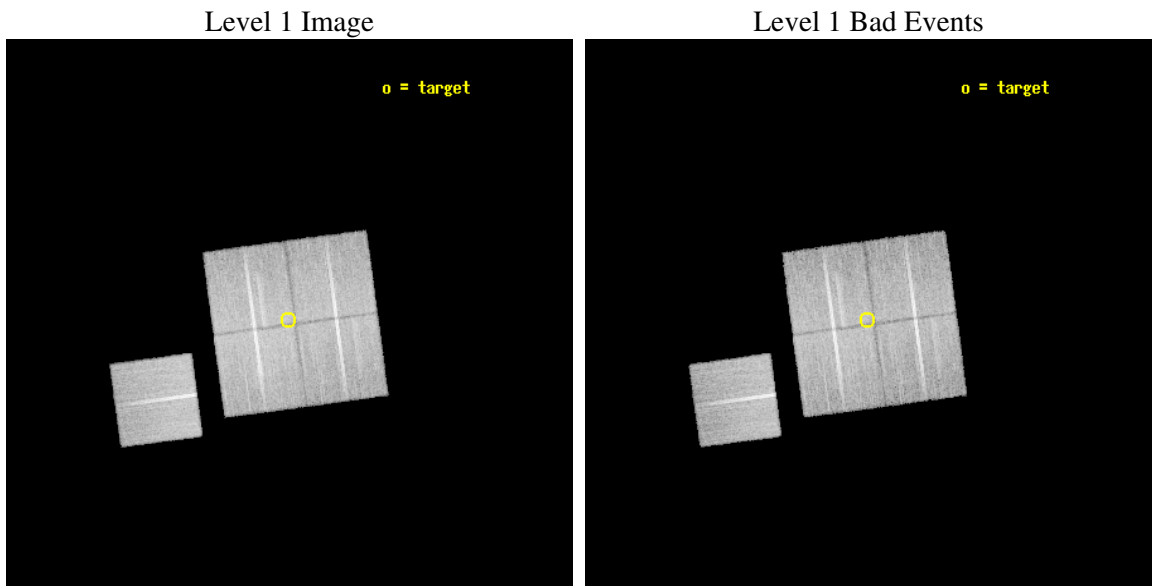
seq_num	701058
obs_id	6359
title	A Chandra Study of Two Nearby, Powerful Radio Galaxies in Poor Environments
observer	Dr. Ralph Kraft
object	3C 442A
dtcycle	0
cycle	P
ra_targ	333.6418
dec_targ	13.9296
ra_nom	333.63940981409
dec_nom	13.925664607431
roll_nom	262.32574677507
revision	2
ontime	20146.81799075
livetime	19883.584981829
ontime0	20149.959020913
ontime1	20149.958970994
ontime2	20143.67699042
ontime3	20146.81799075
ontime6	20153.099961251
l2events	85593



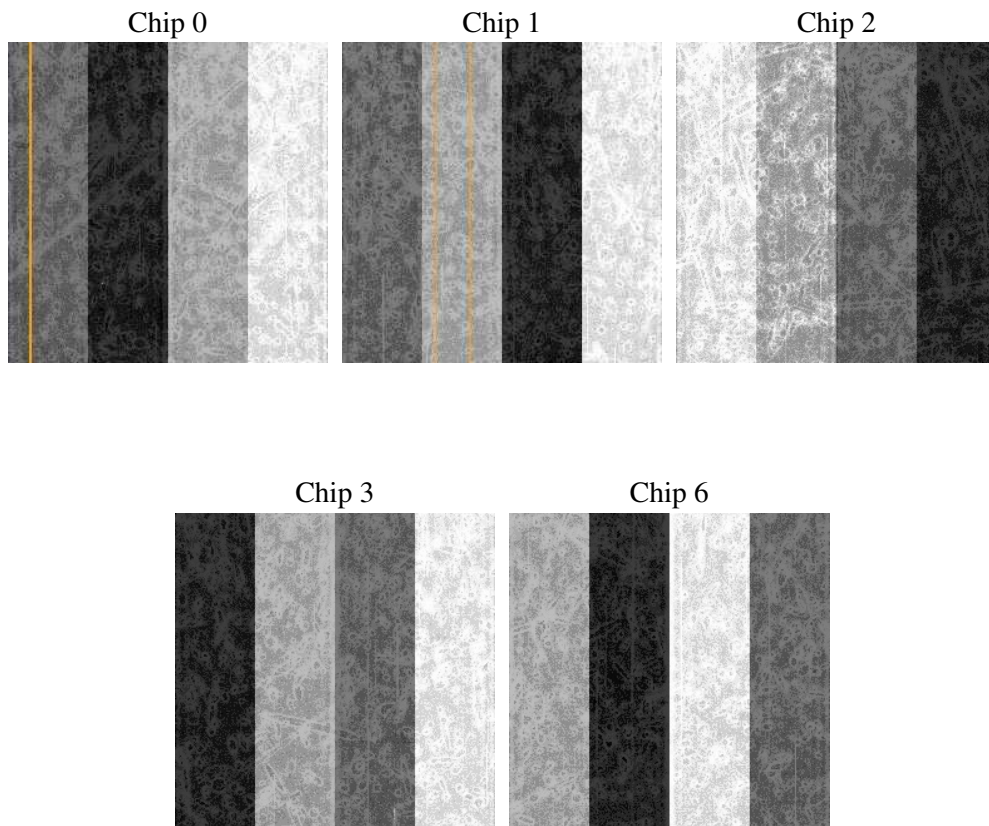
2 OBI

2.1 OBI

2.1.1 Images



2.1.2 Bias



2.1.3 Parameters

obi_num	0
ascdsver	7.6.7.1
caldbver	3.2.1
date	2006-03-31T21:22:45
revision	2

sched_exp_time	20000.000000
ontime	21848.870175362
ontime0	21852.011225432
ontime1	21852.011155605
ontime2	21845.729175031
ontime3	21848.870175362
ontime6	21855.152165771
l1events	809449

2.1.4 Events

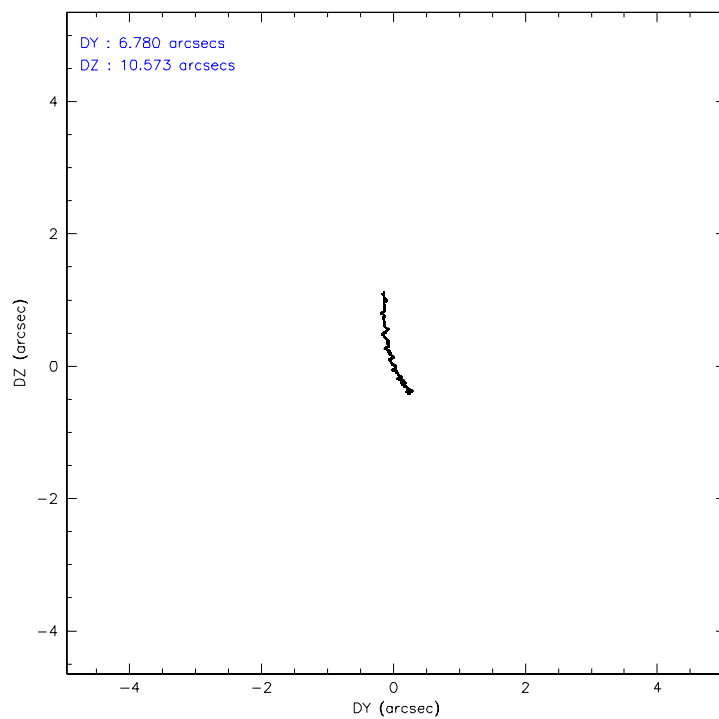
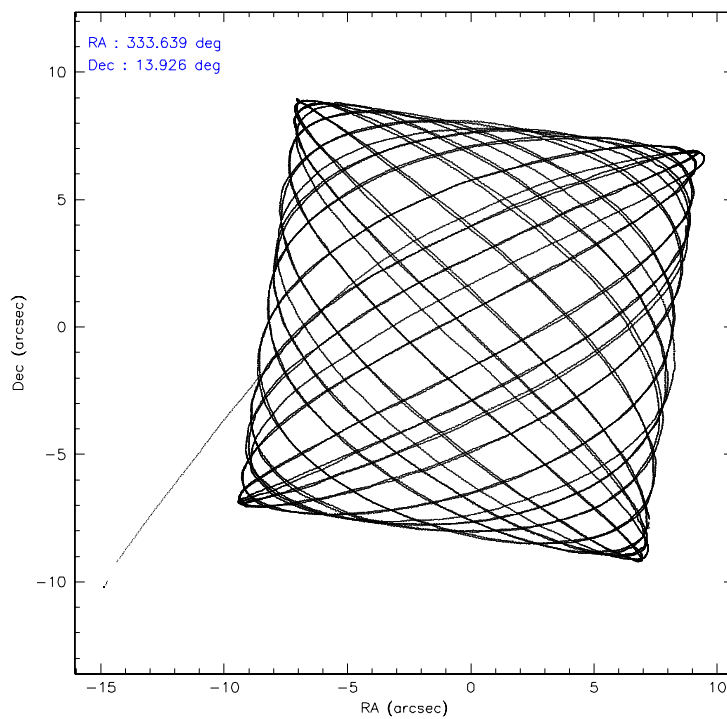
	ccd 0	ccd 1	ccd 2	ccd 3	ccd 6
level 1 events	153674	150789	174744	163572	166670
rejected events	134830	131277	152202	144587	148170
rejected %	87%	87%	87%	88%	88%

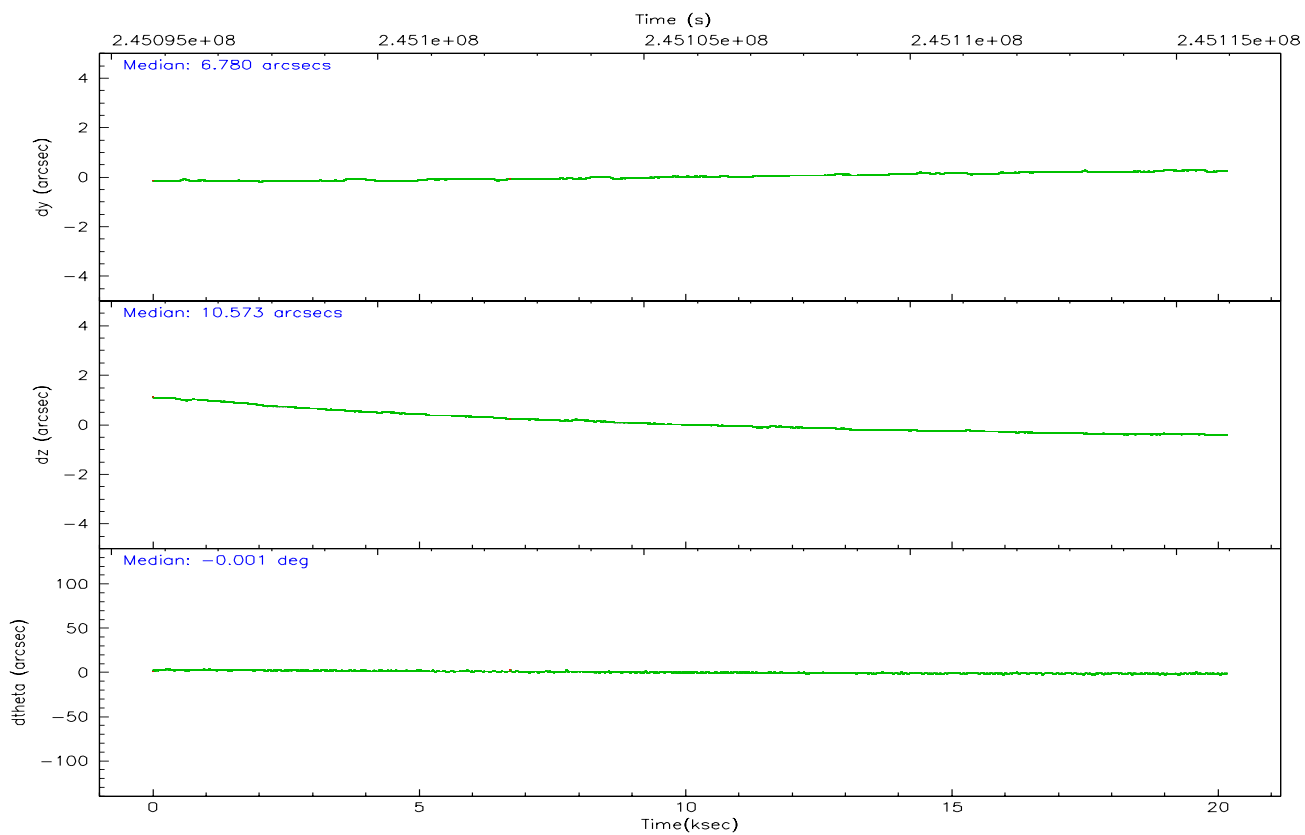
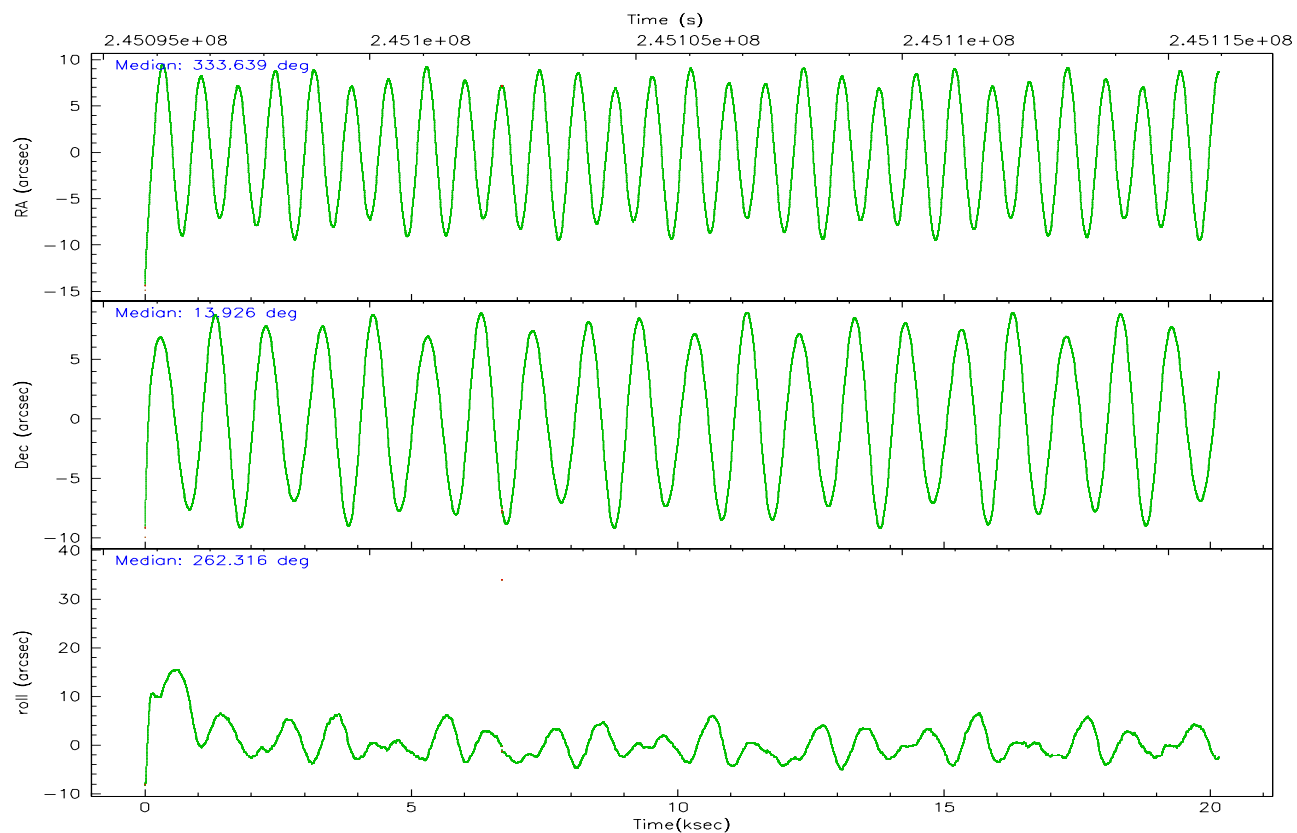
	ccd 0	ccd 1	ccd 2	ccd 3	ccd 6
grade 0 events	8906	8397	12460	9183	8022
	5%	5%	7%	5%	4%
grade 1 events	95	84	129	114	79
	0%	0%	0%	0%	0%
grade 2 events	4307	4817	4407	3935	4203
	2%	3%	2%	2%	2%
grade 3 events	1891	2050	1974	1976	1876
	1%	1%	1%	1%	1%
grade 4 events	1812	1923	2002	1916	1896
	1%	1%	1%	1%	1%
grade 5 events	6638	7207	6593	7638	7717
	4%	4%	3%	4%	4%
grade 6 events	3478	3974	3218	3524	4038
	2%	2%	1%	2%	2%
grade 7 events	126547	122337	143961	135286	138839
	82%	81%	82%	82%	83%

2.2 Compared Parameters

Parameter	Planned	Actual	Parameter	Planned	Actual
Instrument	ACIS	ACIS	Obspar format version number	6	6
Detector	ACIS-01236	ACIS-01236	Obspar file type	PREDICTED	ACTUAL
Grating	NONE	NONE	Obspar update status	NONE	UPDATED
Data mode	VFAINT	VFAINT	On-chip summing requested	N	N
Observation mode	POINTING	POINTING	Subarray requested	NONE	NONE
Pointing RA	333.628545	333.6394098140904	Alternating exposures requested	N	N
Pointing Dec	13.950894	13.92566460743102	Primary exposure time	0.000000	3.1
Pointing Roll	262.119795	262.325746775066			
SIM focus pos (mm)	-0.782348	-0.7809083437167272			
SIM defocus (mm)	0	0.001439871863259334			
SIM translation stage pos (mm)	-233.592463	-233.5874344608287			
SIM translation stage offset (mm)	0	-0.005018542100998502			
Observation start time	245095945.184000	245094091.07578			
Observation start date	2005-10-07T18:11:21	2005-10-07T17:41:31			
Observation end time	245115945.184000	245116835.82683			
Observation end date	2005-10-07T23:44:41	2005-10-08T00:00:35			
Read mode	TIMED	TIMED			

2.3 Aspect



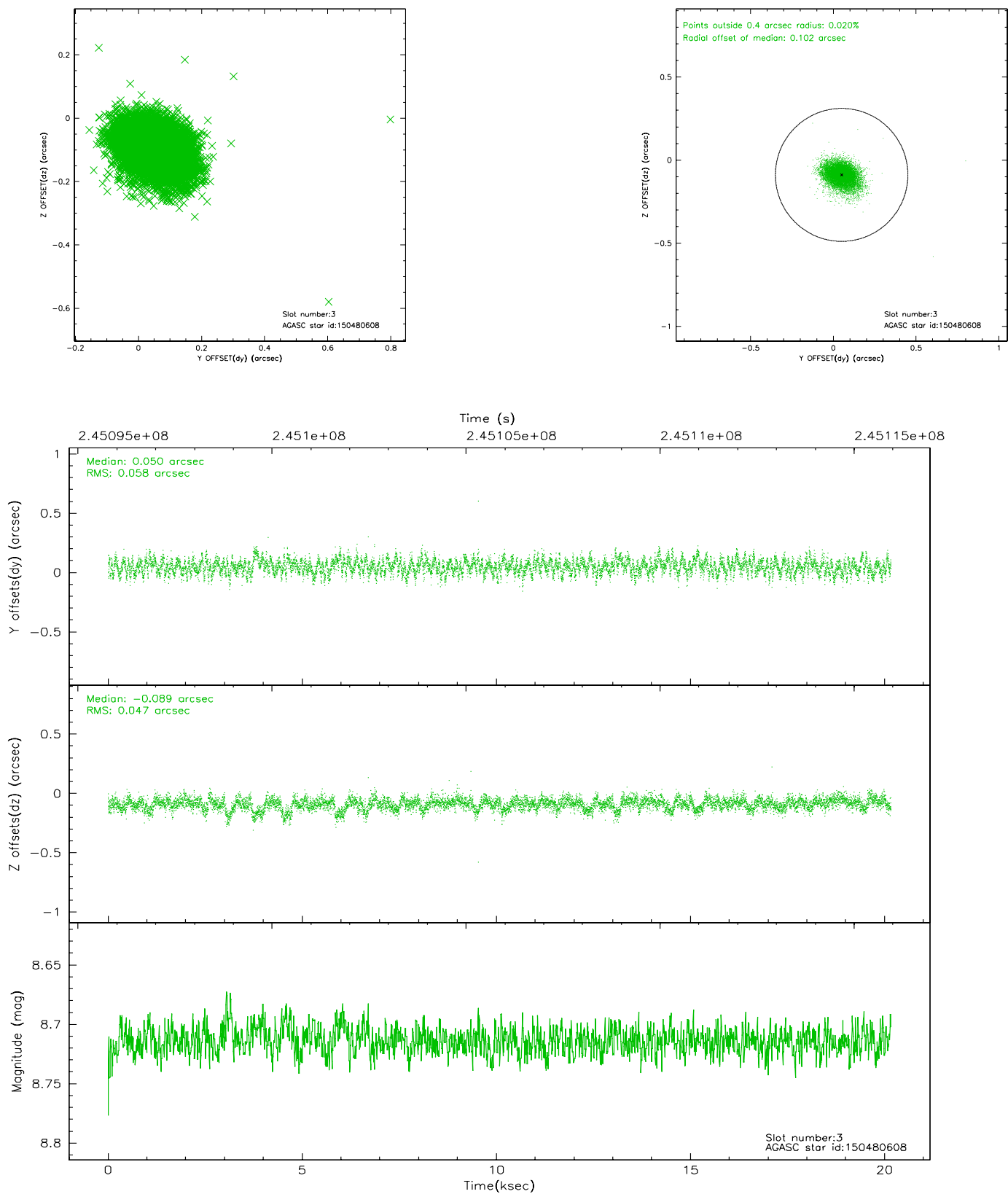


Slot Statistics

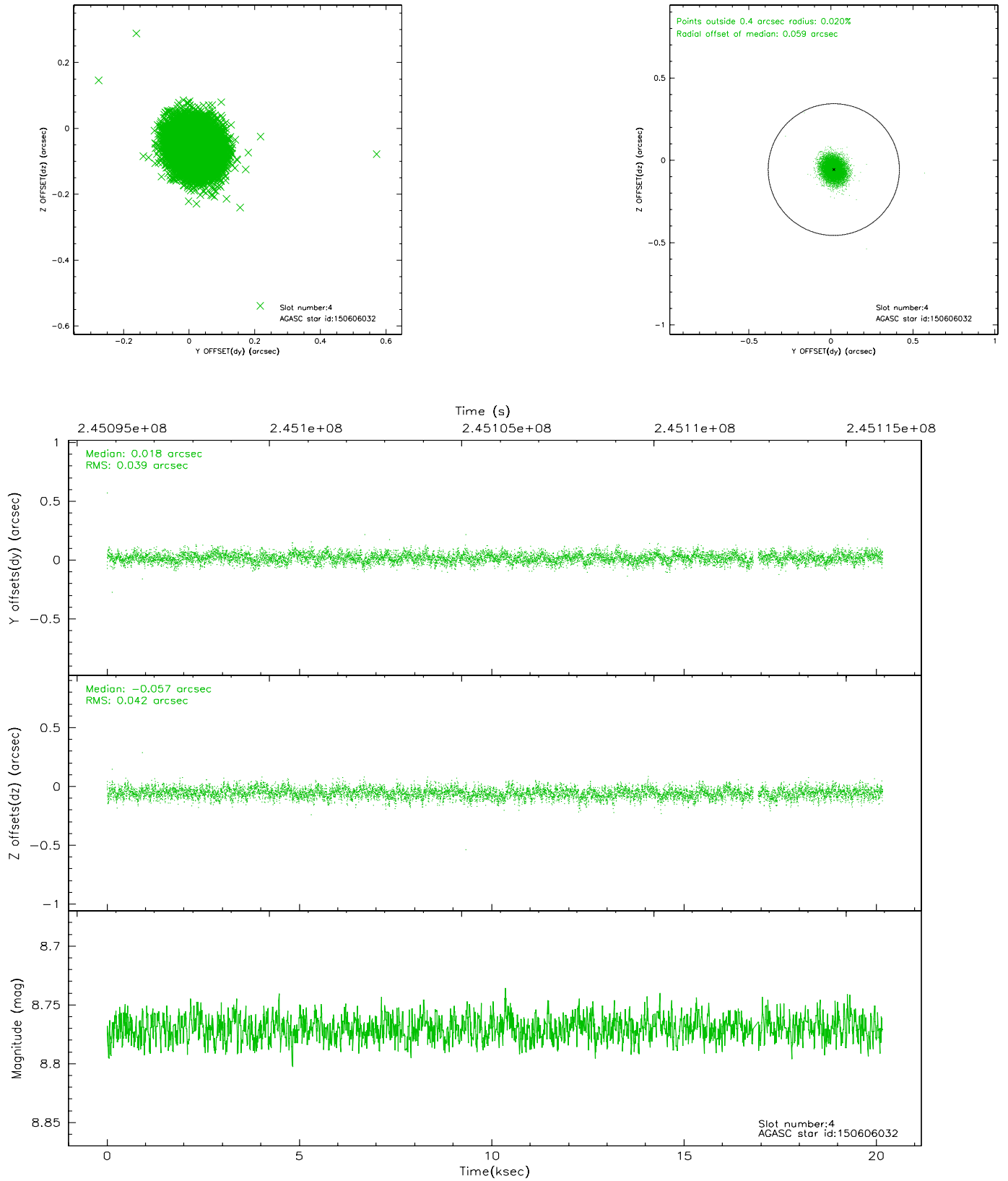
slot	status	id	mag	n_pts	med_dy	med_dz	dr1	dr2	ra	dec	mean_y	mean_z
0	FID	ACIS-I-1	7.25	4919	0.007	0.008	0.018	0.037	0.000000	0.000000	932.88	-834.18
1	FID	ACIS-I-5	7.23	4919	-0.130	0.034	0.014	0.024	0.000000	0.000000	-1815.24	1063.28
2	FID	ACIS-I-6	7.26	4918	0.033	0.027	0.014	0.024	0.000000	0.000000	398.28	1707.95
3	GUIDE	150480608	8.71	9825	0.050	-0.089	0.077	0.131	333.055796	13.488769	1921.39	-1757.95
4	GUIDE	150606032	8.77	9763	0.018	-0.057	0.060	0.098	333.468551	13.881130	325.97	-519.59
5	GUIDE	150611320	9.64	9826	0.054	0.027	0.126	0.206	333.975779	13.562036	1219.42	1395.81
6	GUIDE	150614840	8.68	9833	-0.104	0.095	0.085	0.134	333.996804	13.803587	347.97	1348.25
7	GUIDE	150610392	9.93	9824	-0.017	0.029	0.112	0.182	333.859193	14.324725	-1443.45	612.47

2.4 Star Slots

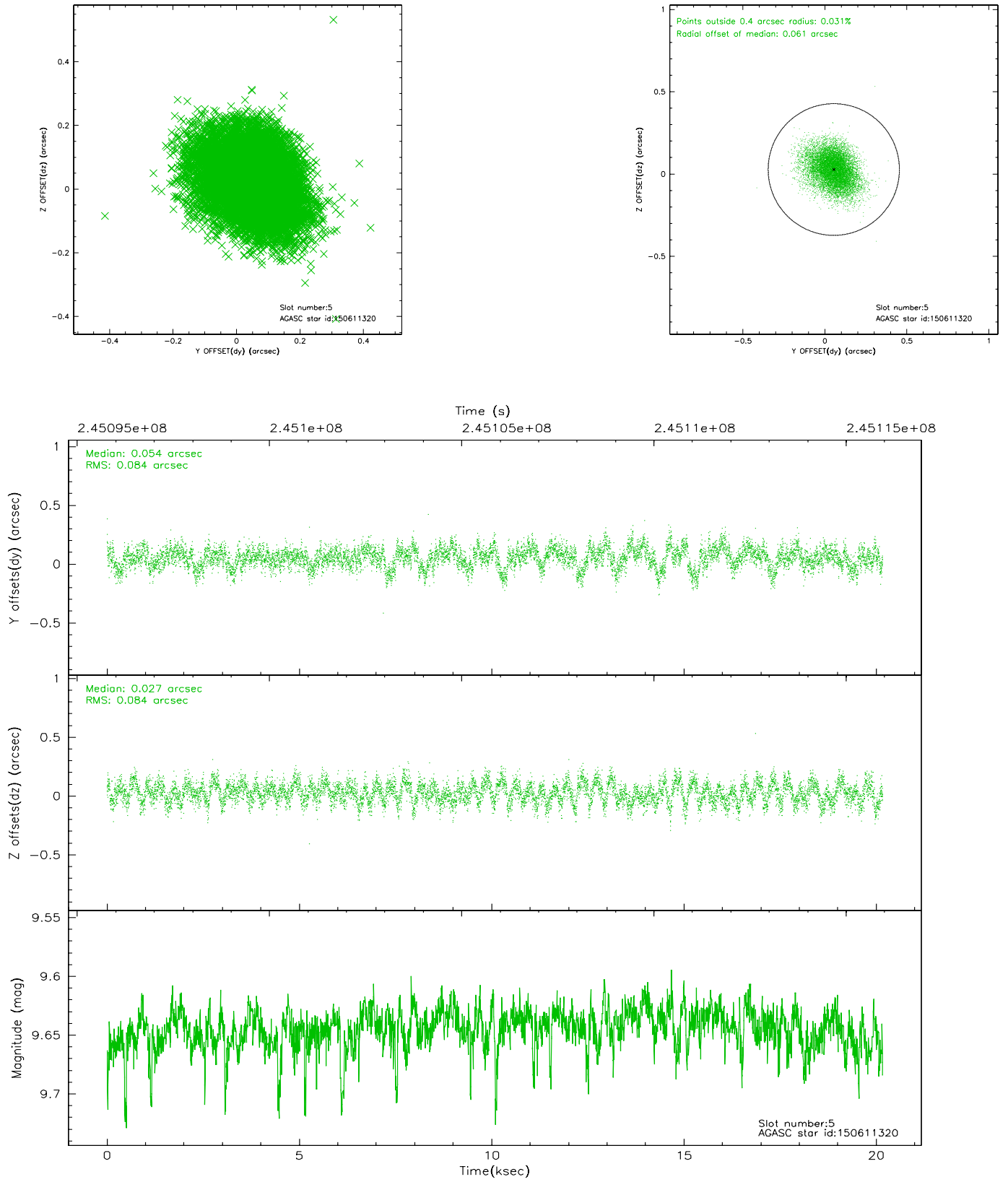
2.4.1 Slot 3



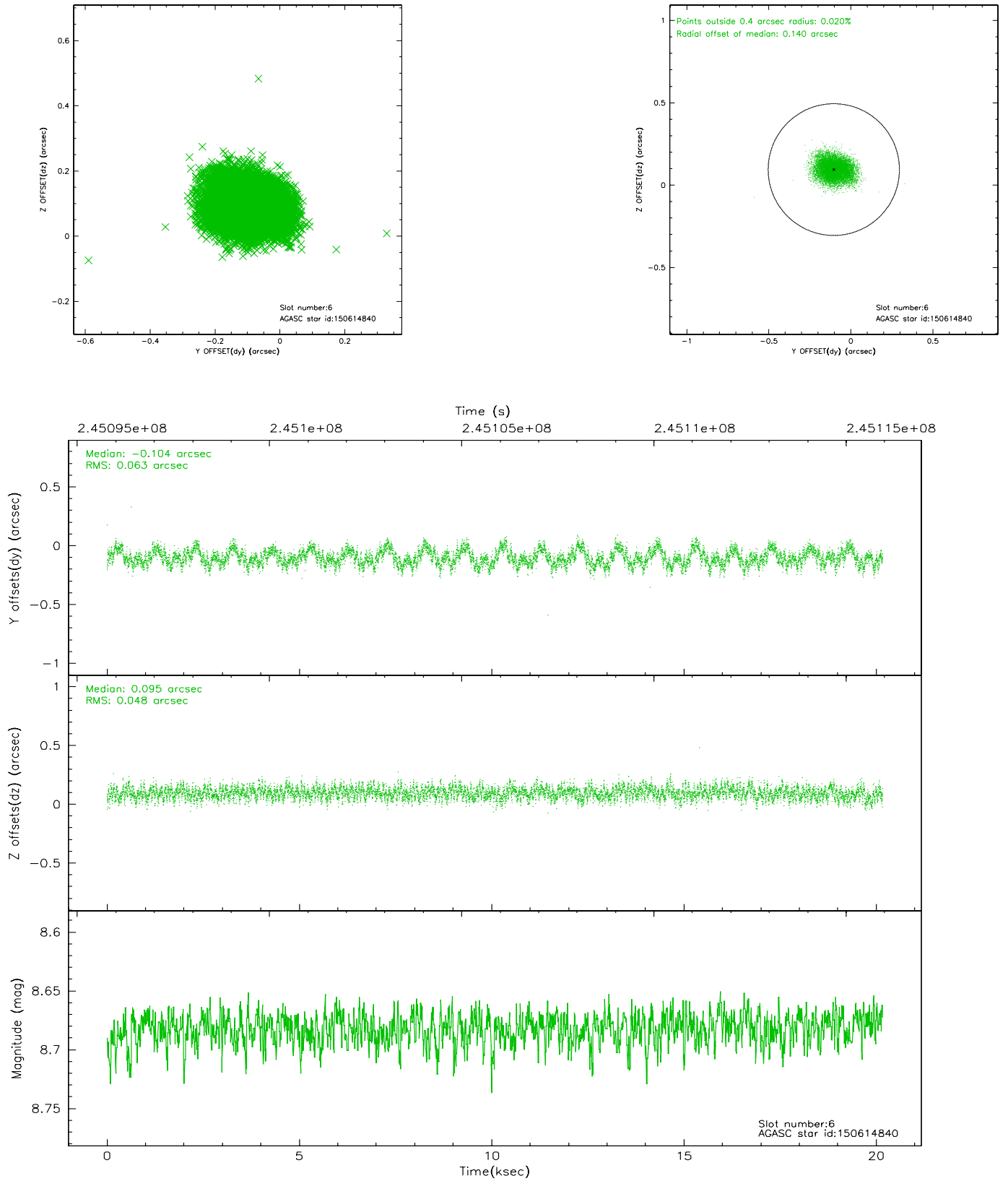
2.4.2 Slot 4



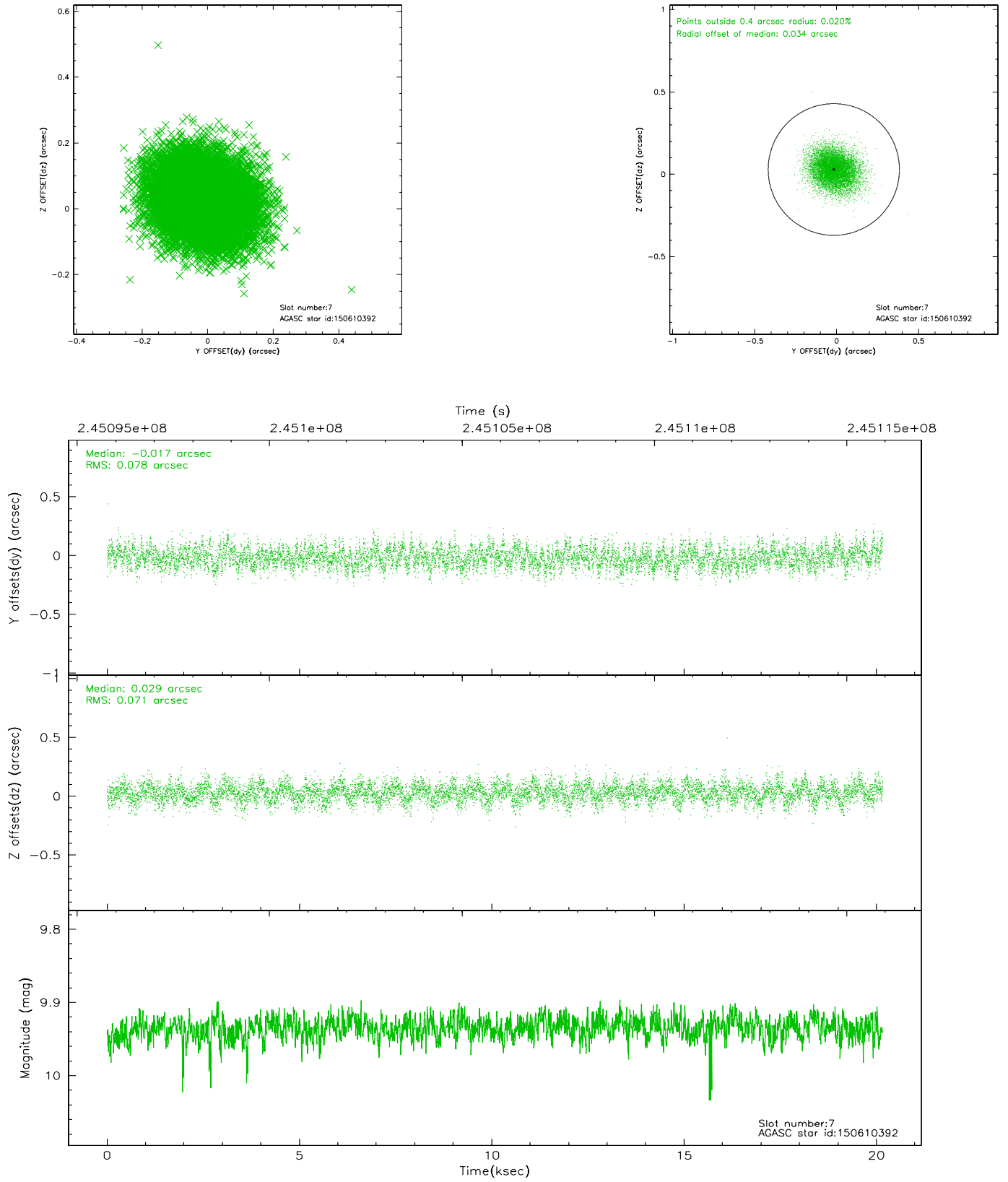
2.4.3 Slot 5



2.4.4 Slot 6

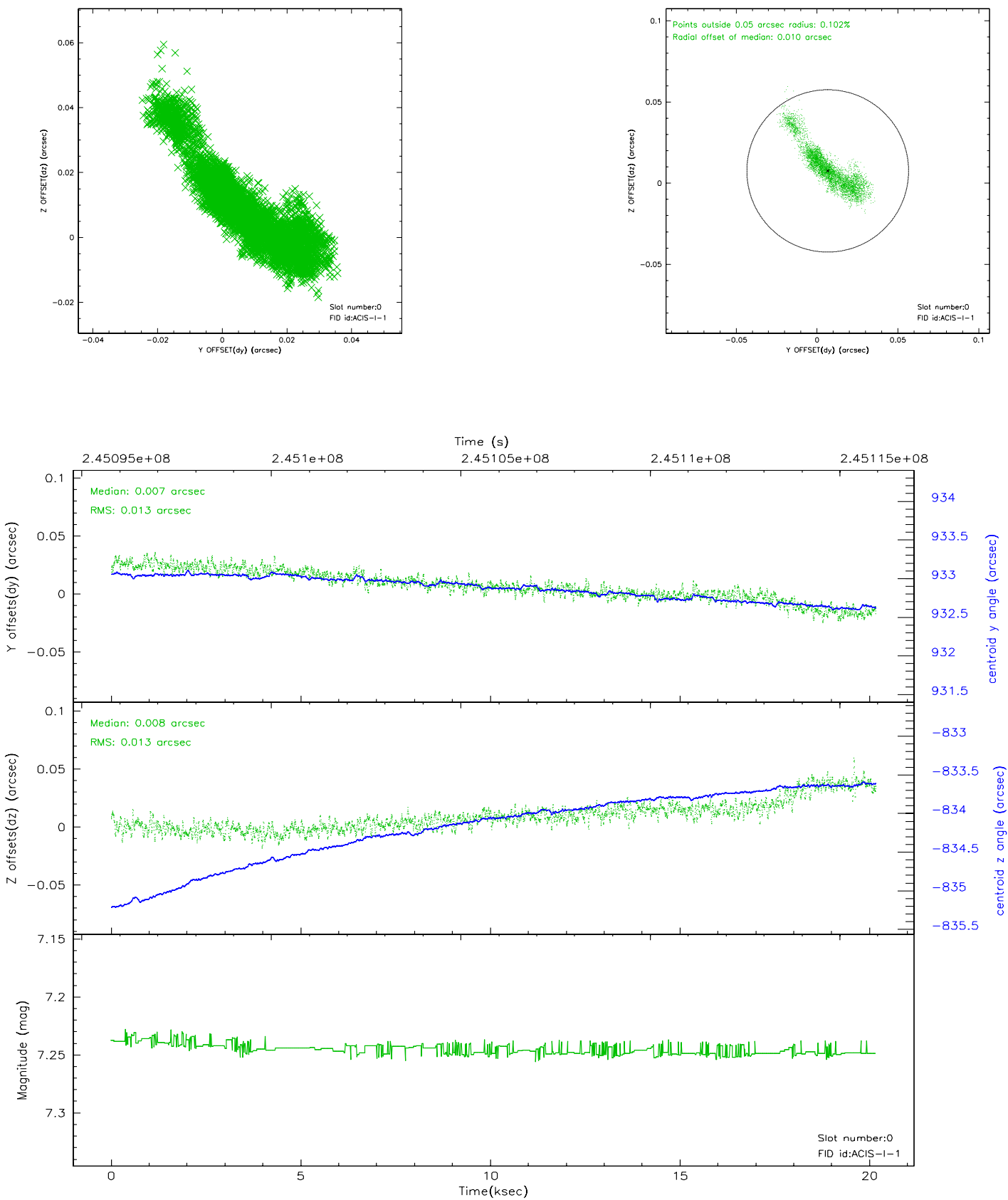


2.4.5 Slot 7

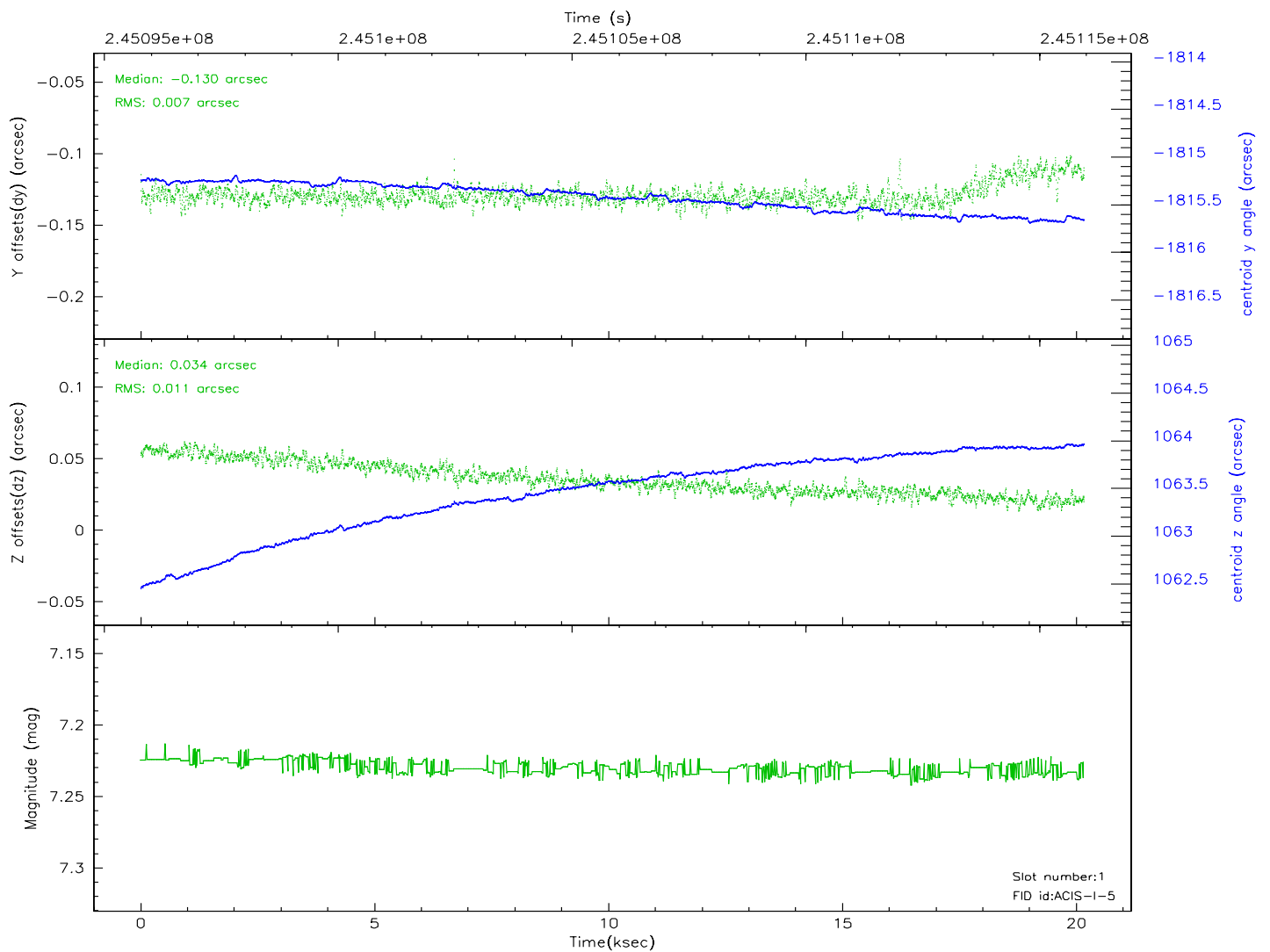
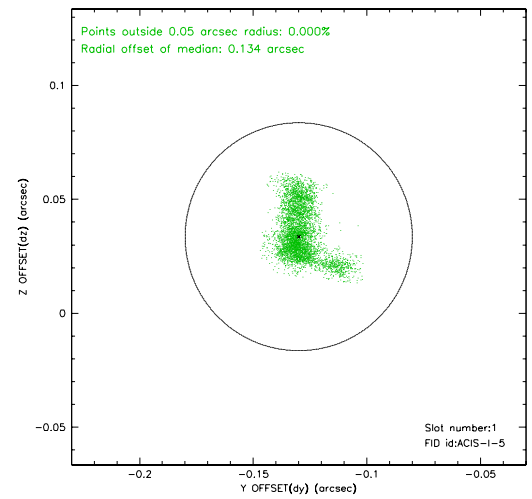
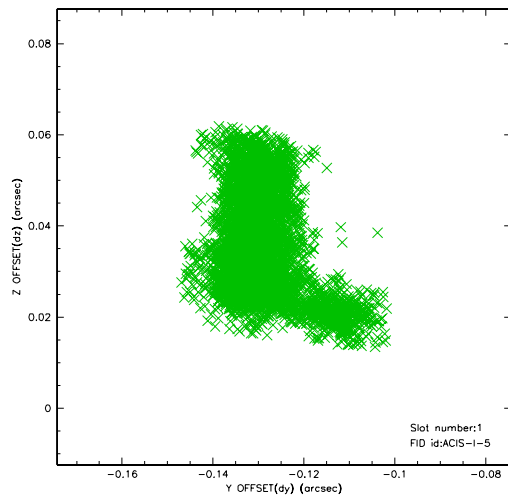


2.5 FID Slots

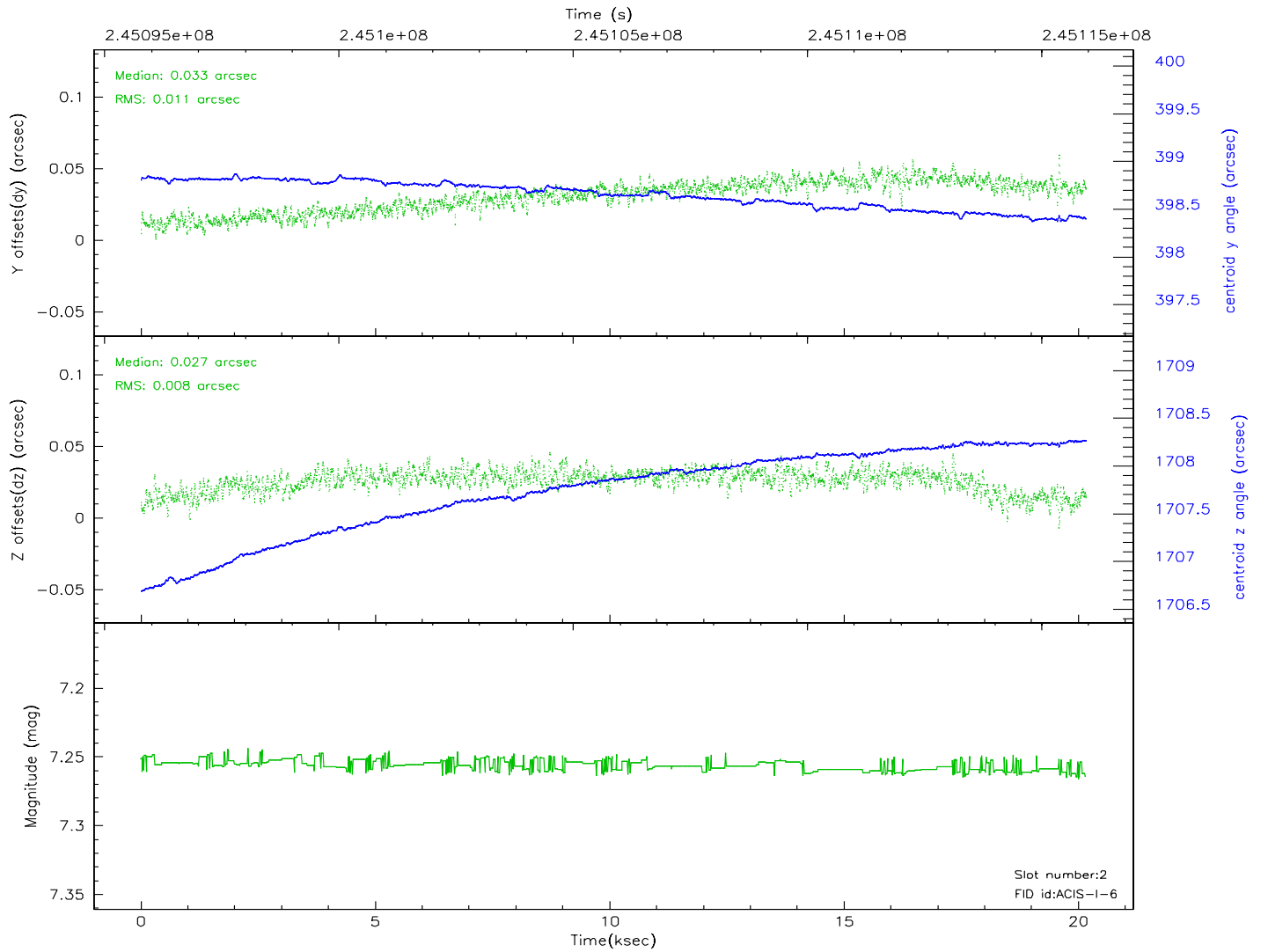
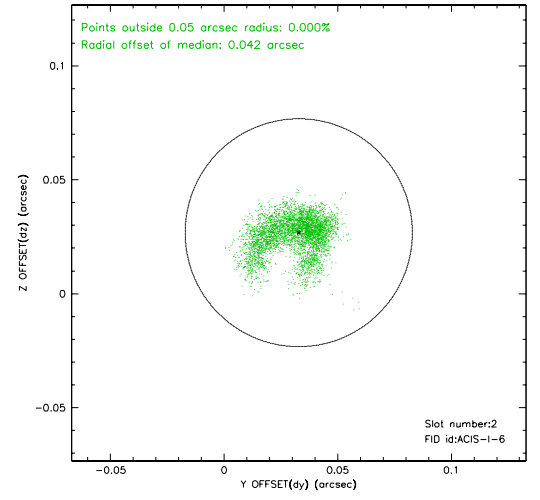
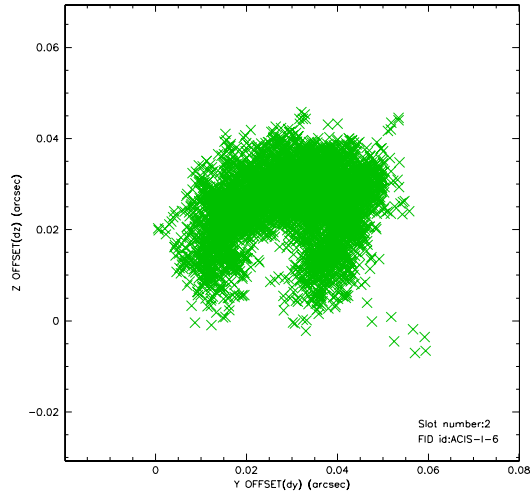
2.5.1 Slot 0



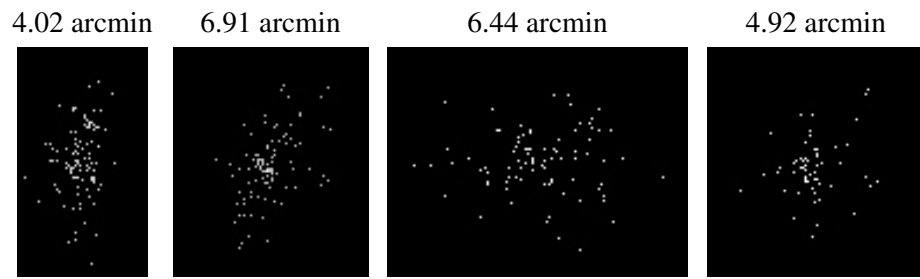
2.5.2 Slot 1



2.5.3 Slot 2



3 Point Sources



A Summary

A.1 Status

V&V Scientist	Jen Lauer
V&V Date (YYYY-MM-DD)	2006.04.03
V&V Edition	1
V&V Disposition and Status	OK
V&V Charge Time	20.14681

A.2 Comments

Fid lights are distended, though within spec. The img_roll_rms has an odd peak, within the mtl limits but still noticeably higher than the rest of the observation, approximately 7 ksec into the observation. Aspec review determined that the aspect solution is acceptable.

As a consequence of the DEA-A shutdown anomaly on Sep 15th (DOY258), the the reported value of the ACIS FP temperature was ~1.3 degrees warmer than the actual temperature. GOs should subtract 1.3 degrees from the reported temperature to determine the true temperature.