

V&V Reference Report

L2 ASCDS Version : 7.6.7.1

Observation 6346 - L2 Version 002
Chandra X-Ray Center

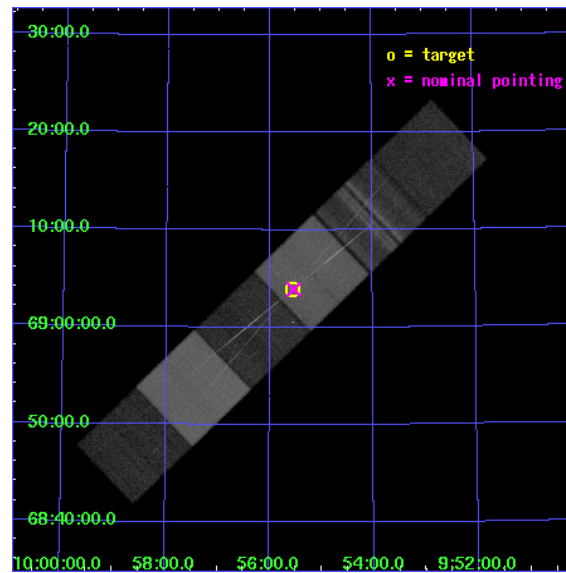
L2 Processing Date : Mar 14 2006

Contents

1	Front	2
2	OBI	3
2.1	OBI	3
2.1.1	Images	3
2.1.2	Bias	3
2.1.3	Parameters	4
2.1.4	Events	4
2.2	Compared Parameters	5
2.3	Aspect	6
2.4	Star Slots	9
2.4.1	Slot 3	9
2.4.2	Slot 4	10
2.4.3	Slot 5	11
2.4.4	Slot 6	12
2.4.5	Slot 7	13
2.5	FID Slots	14
2.5.1	Slot 0	14
2.5.2	Slot 1	15
2.5.3	Slot 2	16
3	Gratings	17
3.1	HEG Arm	17
3.2	MEG Arm	19
A	Summary	21
A.1	Status	21
A.2	Comments	21

1 Front

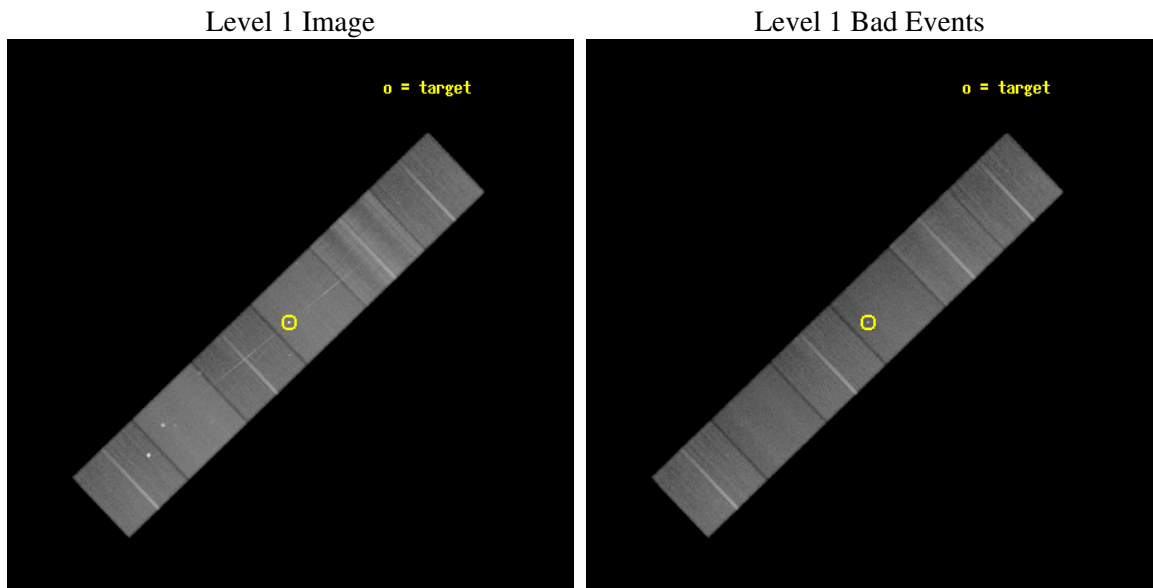
seq_num	701024
obs_id	6346
title	Understanding the accretion process in a Low-Luminosity AGN: is M81* a starved black hole?
observer	Dr. Claude Canizares
object	M81*
dtcycle	0
cycle	P
ra_targ	148.888333
dec_targ	69.065306
ra_nom	148.88208755389
dec_nom	69.065140762406
roll_nom	316.16246132395
revision	2
ontime	55177.599794447
livetime	54478.907801888
ontime4	55177.599794447
ontime5	55177.599794447
ontime6	55174.358834177
ontime7	55177.599794447
ontime8	55177.599794447
ontime9	55177.599794447
l2events	765668



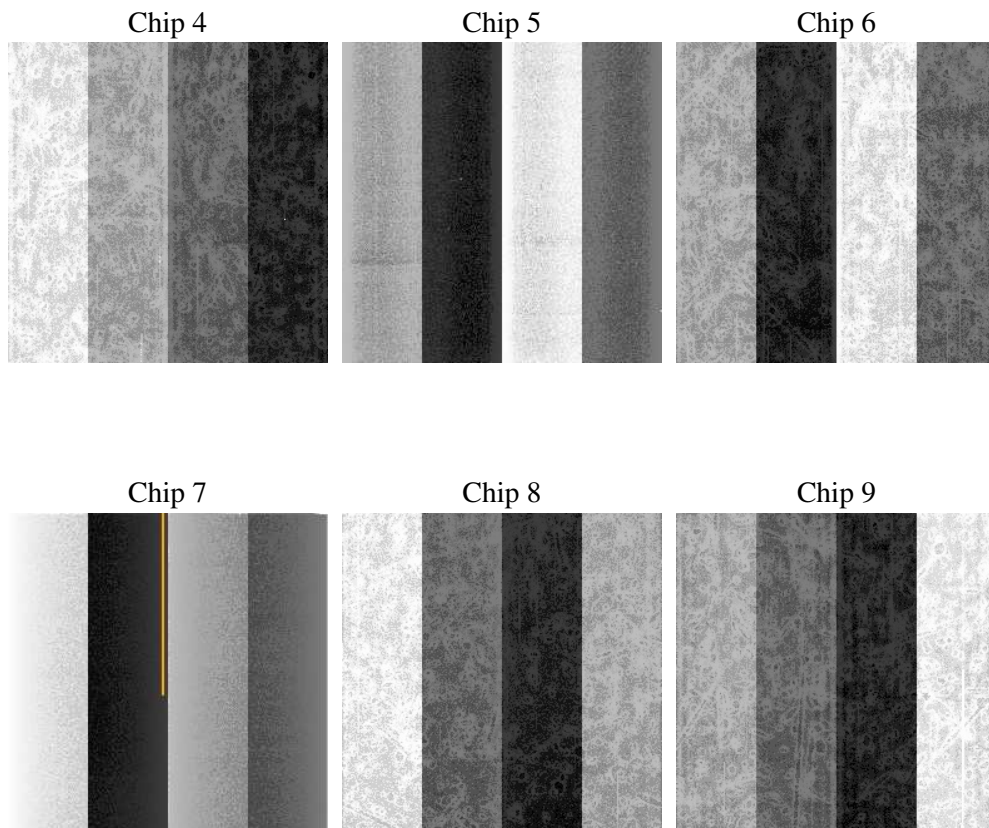
2 OBI

2.1 OBI

2.1.1 Images



2.1.2 Bias



2.1.3 Parameters

obi_num	1
ascdsver	7.6.7.1
caldsver	3.2.1
date	2006-03-14T18:49:30
revision	2

sched_exp_time	55000.000000
ontime	55190.993575931
ontime4	55190.993546039
ontime5	55190.993575931
ontime6	55190.993605882
ontime7	55190.993575931
ontime8	55194.234566152
ontime9	55194.234566152
l1events	3274046

2.1.4 Events

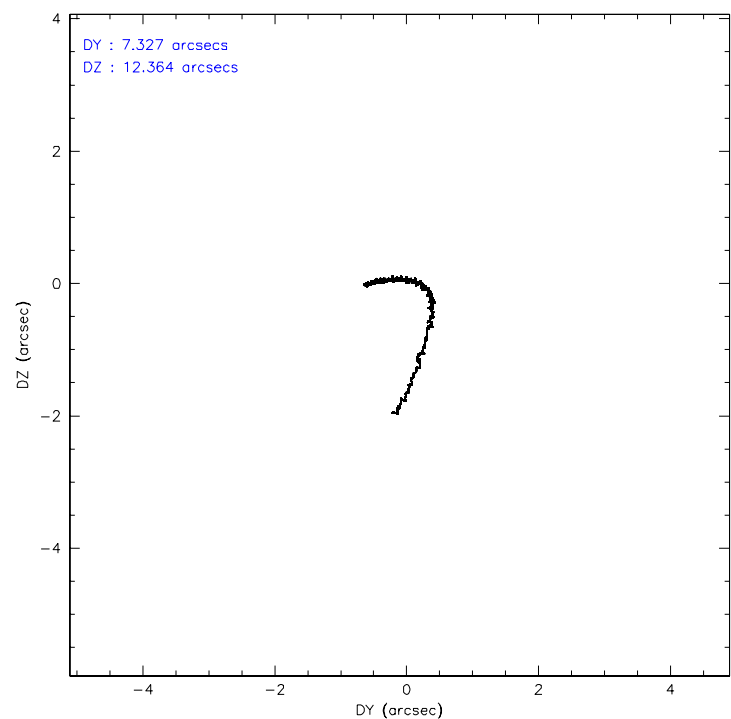
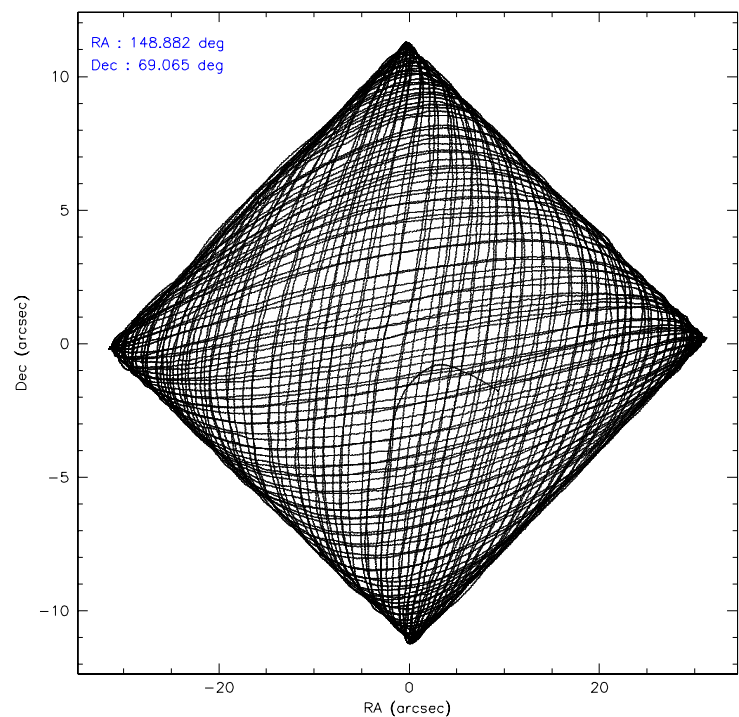
	ccd 4	ccd 5	ccd 6	ccd 7	ccd 8	ccd 9
level 1 events	503189	626872	460867	590486	648497	444135
rejected events	425644	346075	390733	347946	440914	382277
rejected %	84%	55%	84%	58%	67%	86%

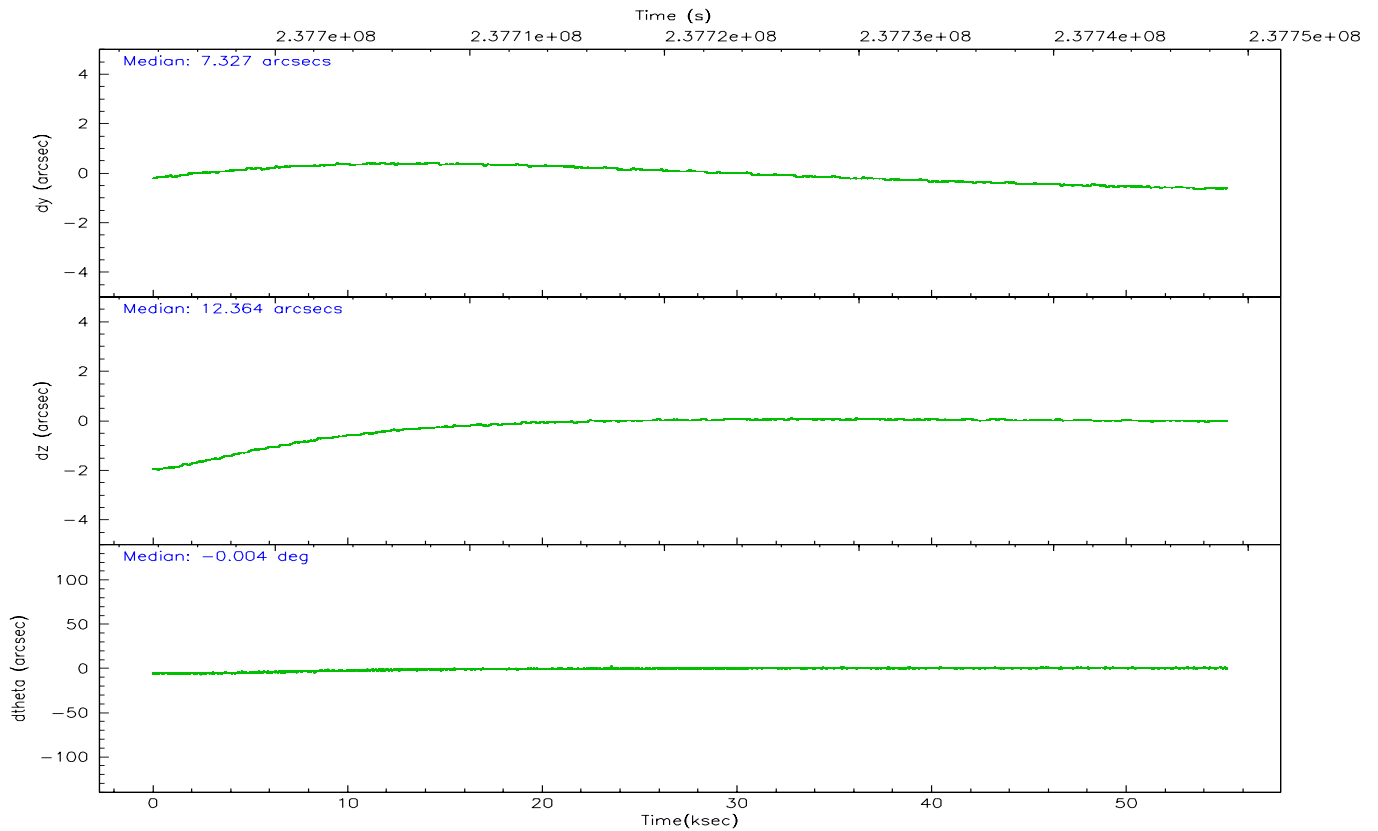
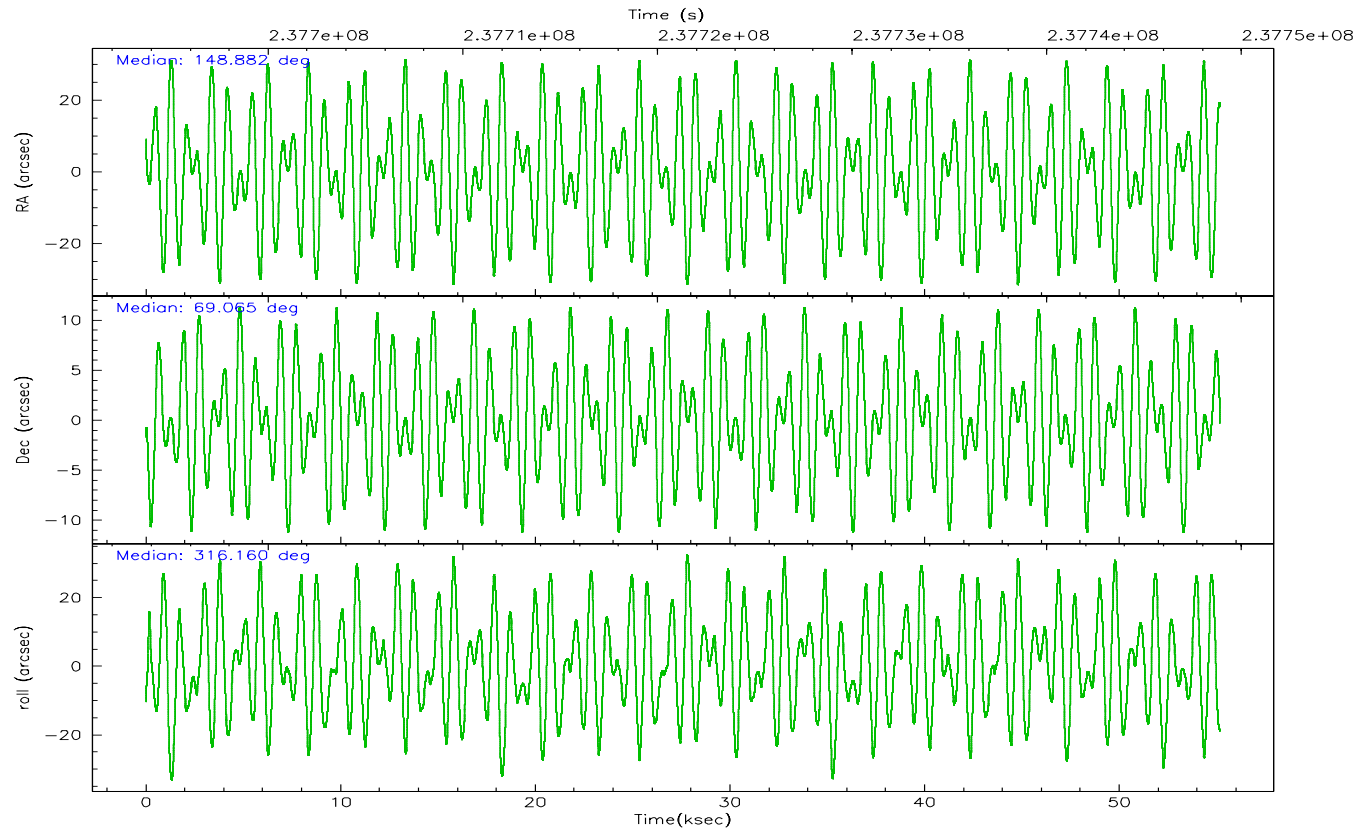
	ccd 4	ccd 5	ccd 6	ccd 7	ccd 8	ccd 9
grade 0 events	40914	16266	30797	16443	62585	25477
	8%	2%	6%	2%	9%	5%
grade 1 events	543	779	274	446	558	256
	0%	0%	0%	0%	0%	0%
grade 2 events	14666	91152	14419	62407	39993	12214
	2%	14%	3%	10%	6%	2%
grade 3 events	5877	6600	5603	12851	26451	5660
	1%	1%	1%	2%	4%	1%
grade 4 events	5648	6503	5494	12689	23821	5459
	1%	1%	1%	2%	3%	1%
grade 5 events	18711	30117	19399	37785	26918	20451
	3%	4%	4%	6%	4%	4%
grade 6 events	10458	160358	13854	138218	54750	13060
	2%	25%	3%	23%	8%	2%
grade 7 events	406372	315097	371027	309647	413421	361558
	80%	50%	80%	52%	63%	81%

2.2 Compared Parameters

Parameter	Planned	Actual	Parameter	Planned	Actual
Instrument	ACIS	ACIS	Obspar format version number	6	6
Detector	ACIS-456789	ACIS-456789	Obspar file type	PREDICTED	ACTUAL
Grating	HETG	HETG	Obspar update status	NONE	UPDATED
Data mode	FAINT	FAINT	On-chip summing requested	N	N
Observation mode	POINTING	POINTING	Subarray requested	NONE	NONE
Pointing RA	148.807850	148.8820875538889	Alternating exposures requested	N	N
Pointing Dec	69.071276	69.0651407624061	Primary exposure time	0.000000	3.2
Pointing Roll	316.075170	316.162461323946			
SIM focus pos (mm)	-0.684267	-0.6828225247311905			
SIM defocus (mm)	0	0.001444936568705701			
SIM translation stage pos (mm)	-190.132523	-190.1400660498719			
SIM translation stage offset (mm)	0	0.00754346686406393			
Observation start time	237693917.184000	237692695.39863			
Observation start date	2005-07-14T02:04:13	2005-07-14T01:44:55			
Observation end time	237748917.184000	237749654.13873			
Observation end date	2005-07-14T17:20:53	2005-07-14T17:34:14			
Read mode	TIMED	TIMED			

2.3 Aspect



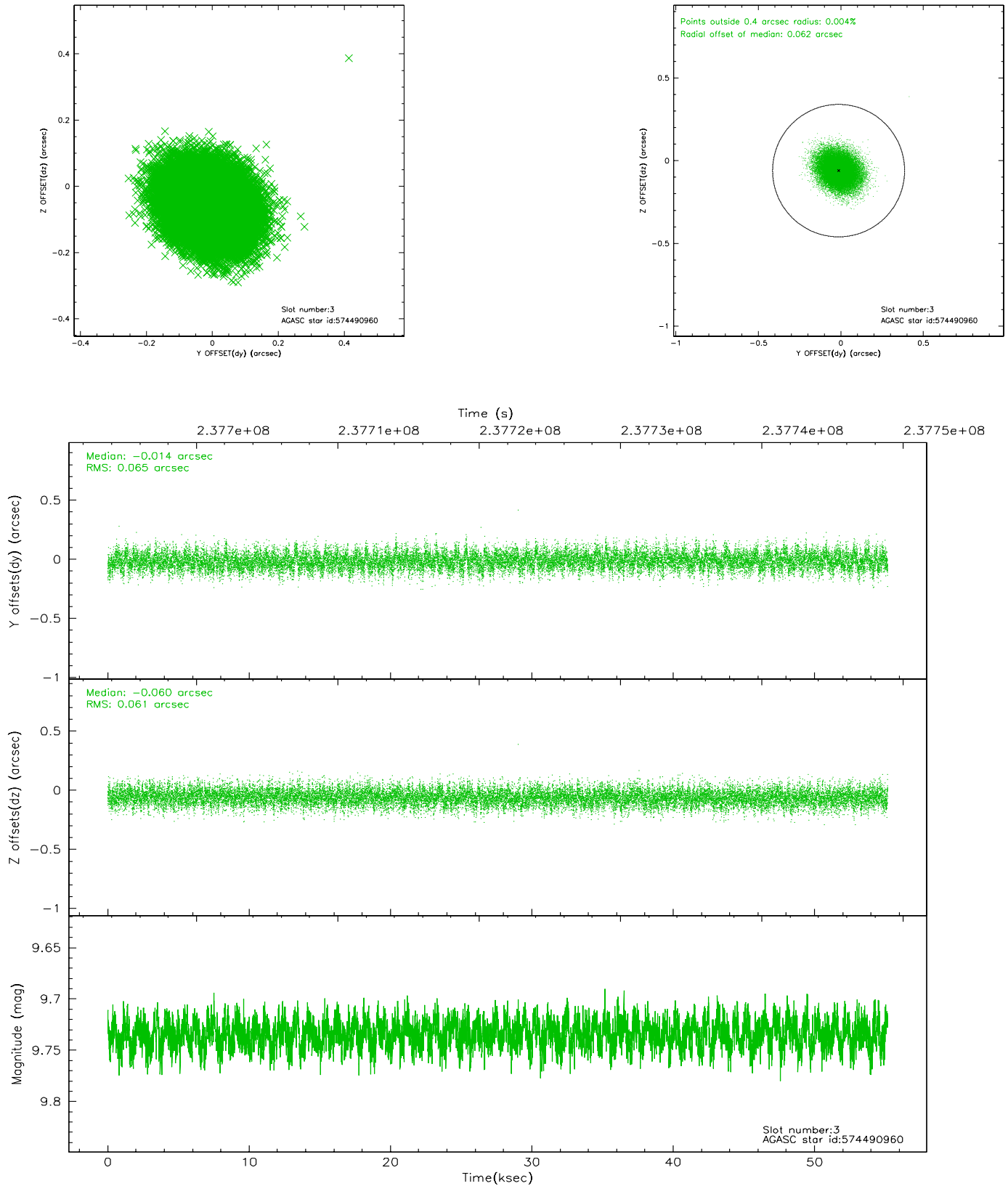


Slot Statistics

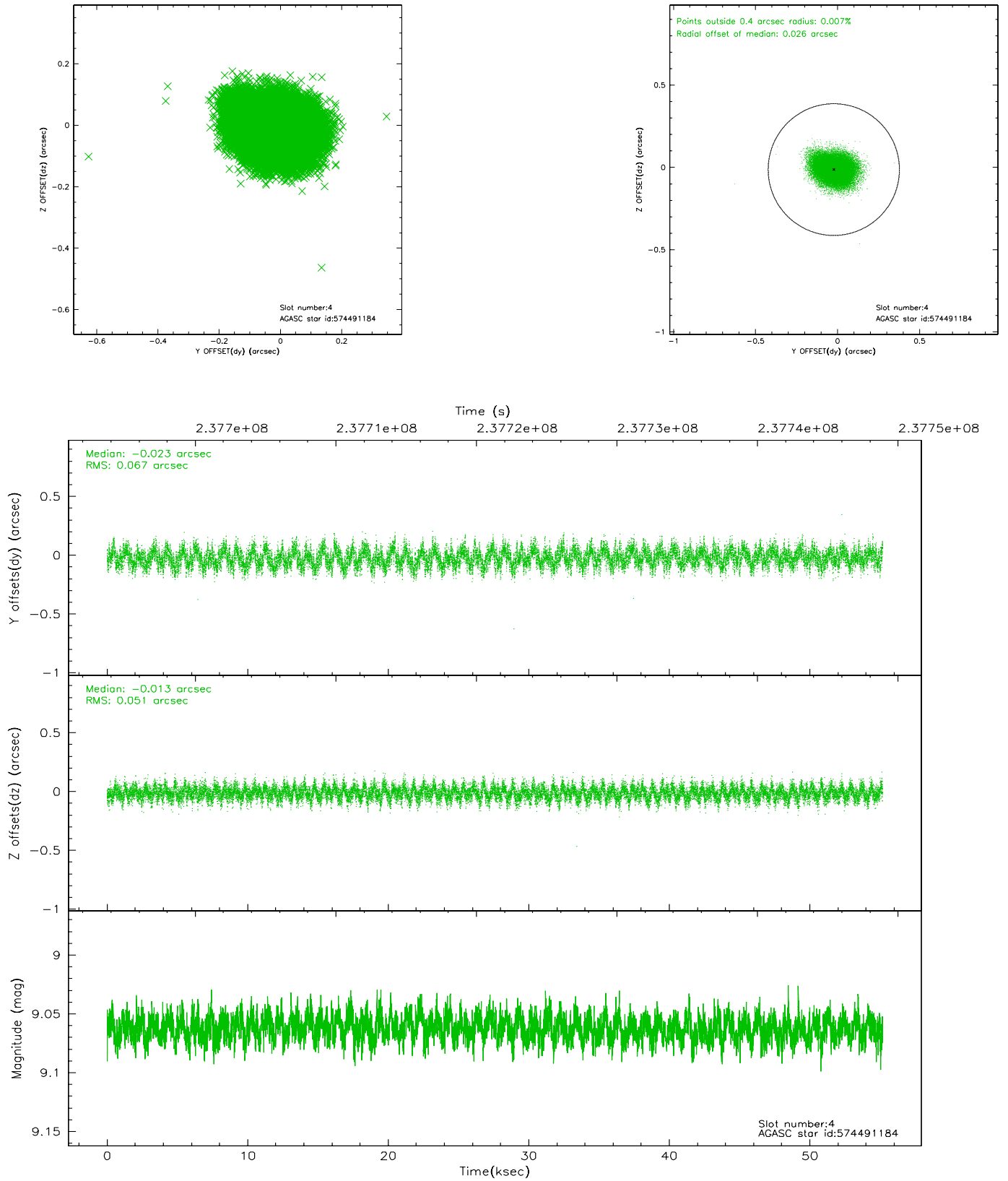
slot	status	id	mag	n_pts	med_dy	med_dz	dr1	dr2	ra	dec	mean_y	mean_z
0	FID	ACIS-S-2	7.10	13459	-0.008	-0.008	0.011	0.035	0.000000	0.000000	-760.06	-1733.41
1	FID	ACIS-S-4	7.20	13459	0.030	0.006	0.018	0.034	0.000000	0.000000	2153.28	175.11
2	FID	ACIS-S-5	7.23	13459	-0.052	0.011	0.020	0.027	0.000000	0.000000	-1812.98	168.76
3	GUIDE	574490960	9.73	26903	-0.014	-0.060	0.094	0.154	148.185918	69.658768	-2030.23	986.26
4	GUIDE	574491184	9.06	26915	-0.023	-0.013	0.090	0.145	148.582453	69.768699	-1944.11	1614.39
5	GUIDE	574491280	9.33	26904	-0.026	-0.039	0.088	0.142	148.611567	69.450135	-1125.02	810.01
6	GUIDE	574496312	10.27	26764	0.031	-0.004	0.162	0.280	149.547505	68.718299	1573.84	-240.13
7	GUIDE	574489568	9.79	26893	0.039	0.118	0.119	0.195	147.223974	69.438157	-2376.01	-418.86

2.4 Star Slots

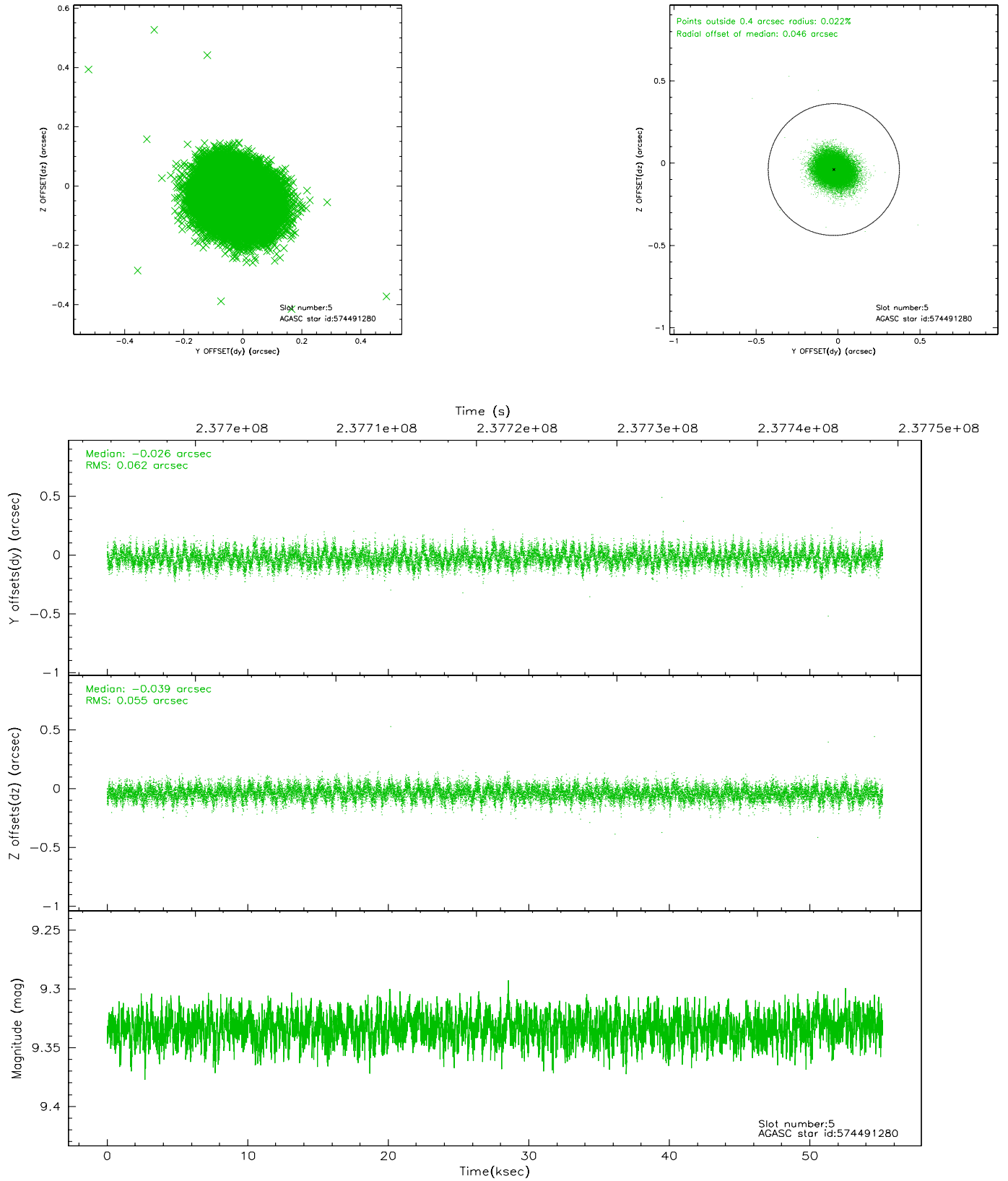
2.4.1 Slot 3



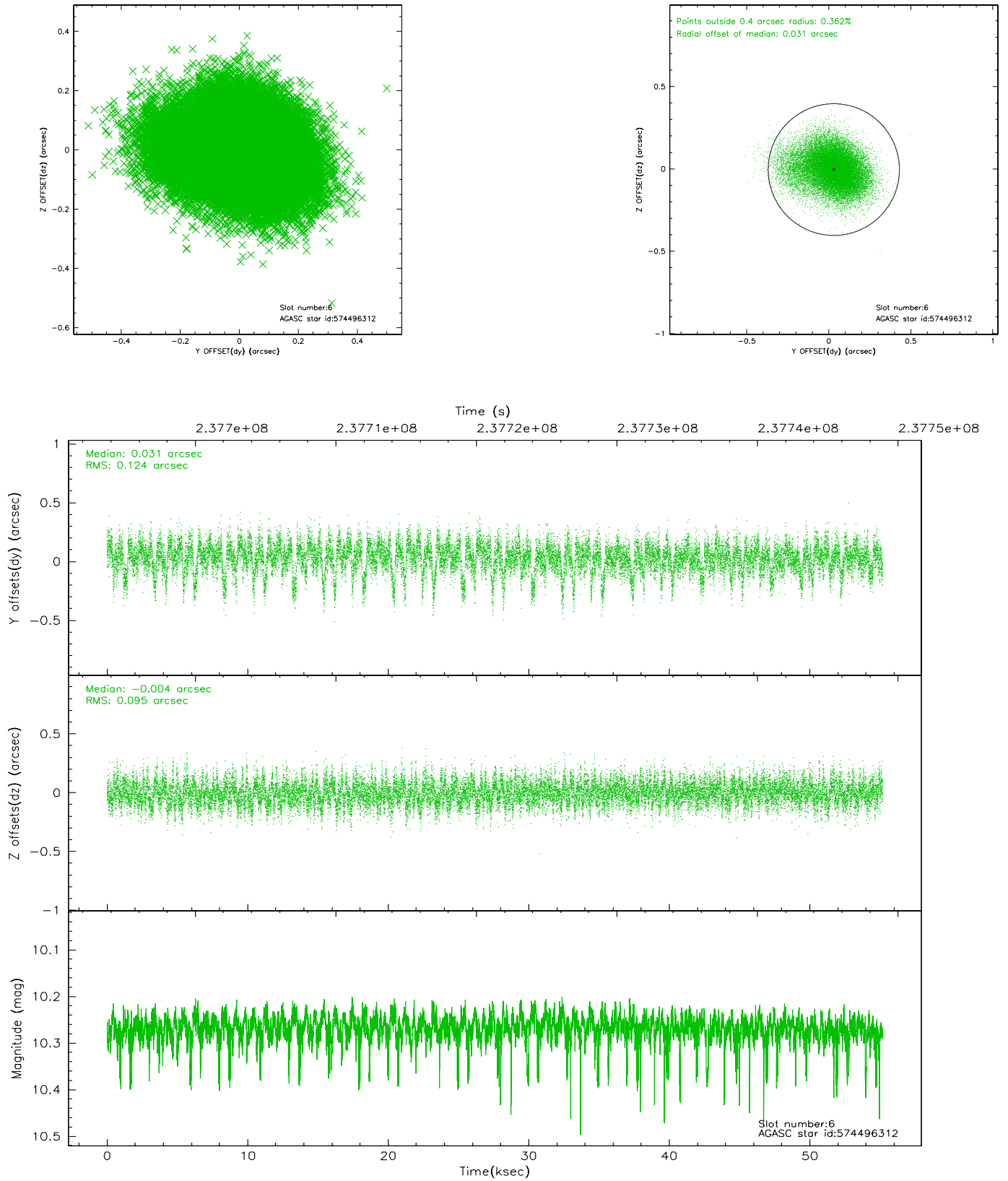
2.4.2 Slot 4



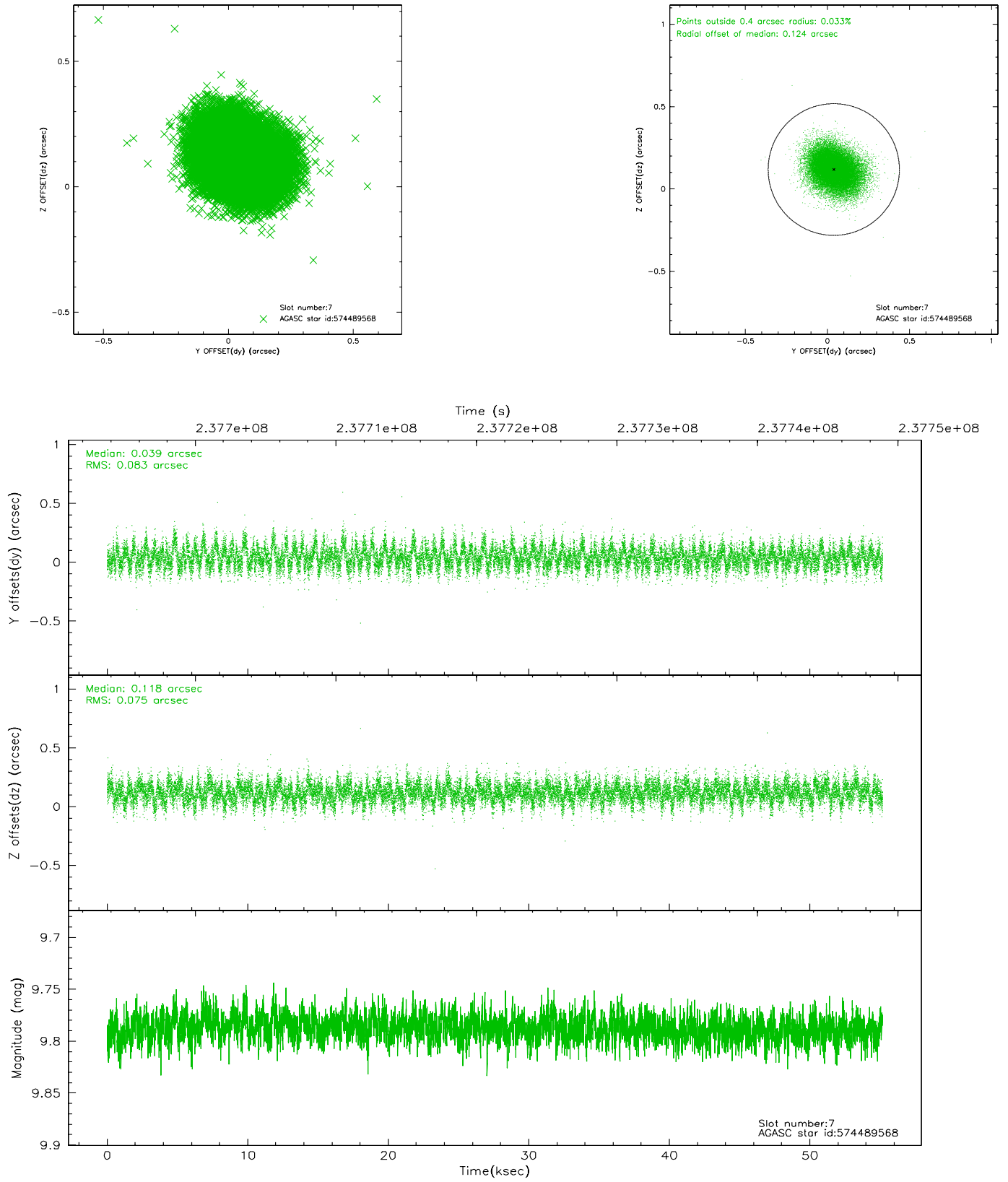
2.4.3 Slot 5



2.4.4 Slot 6

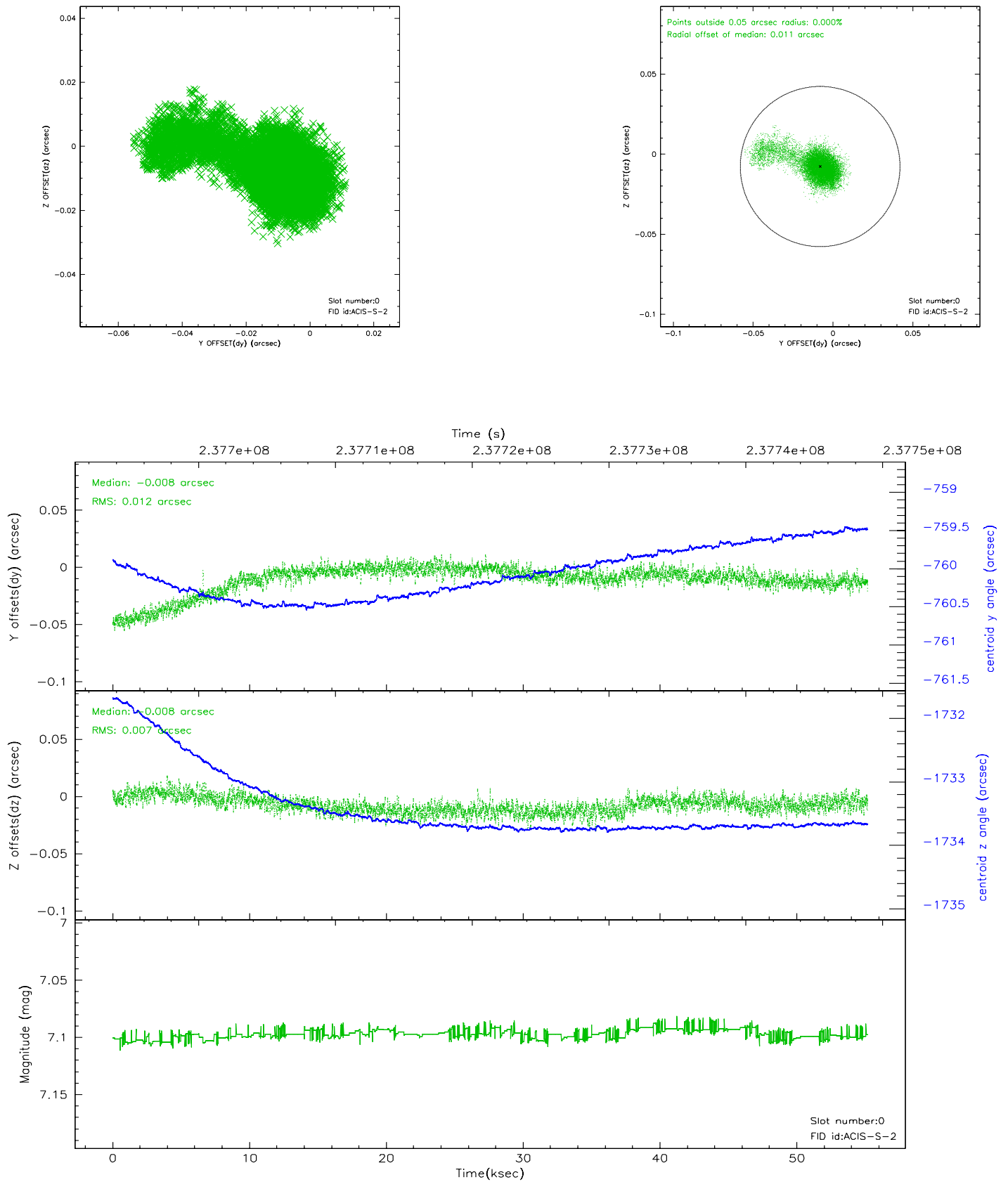


2.4.5 Slot 7

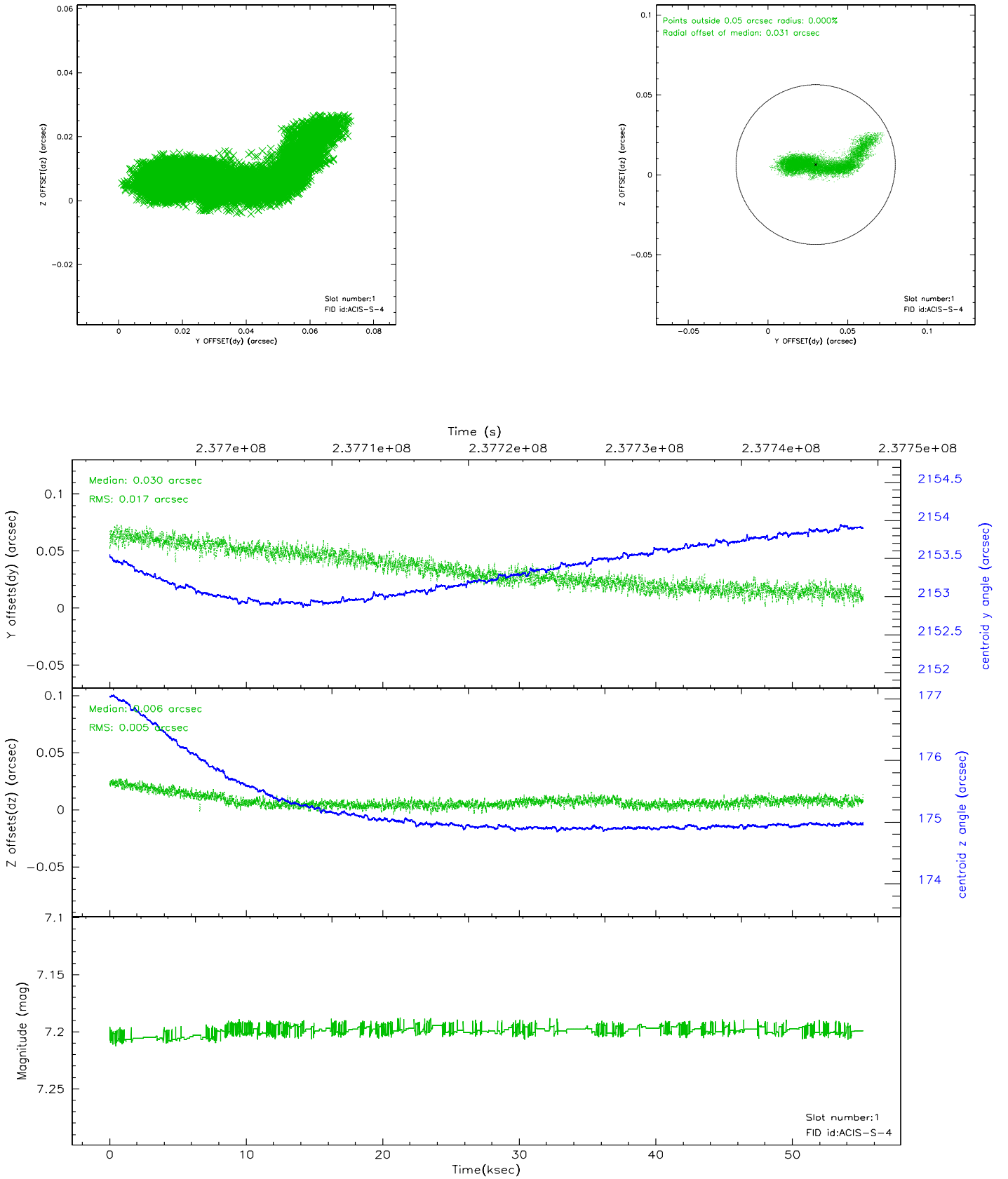


2.5 FID Slots

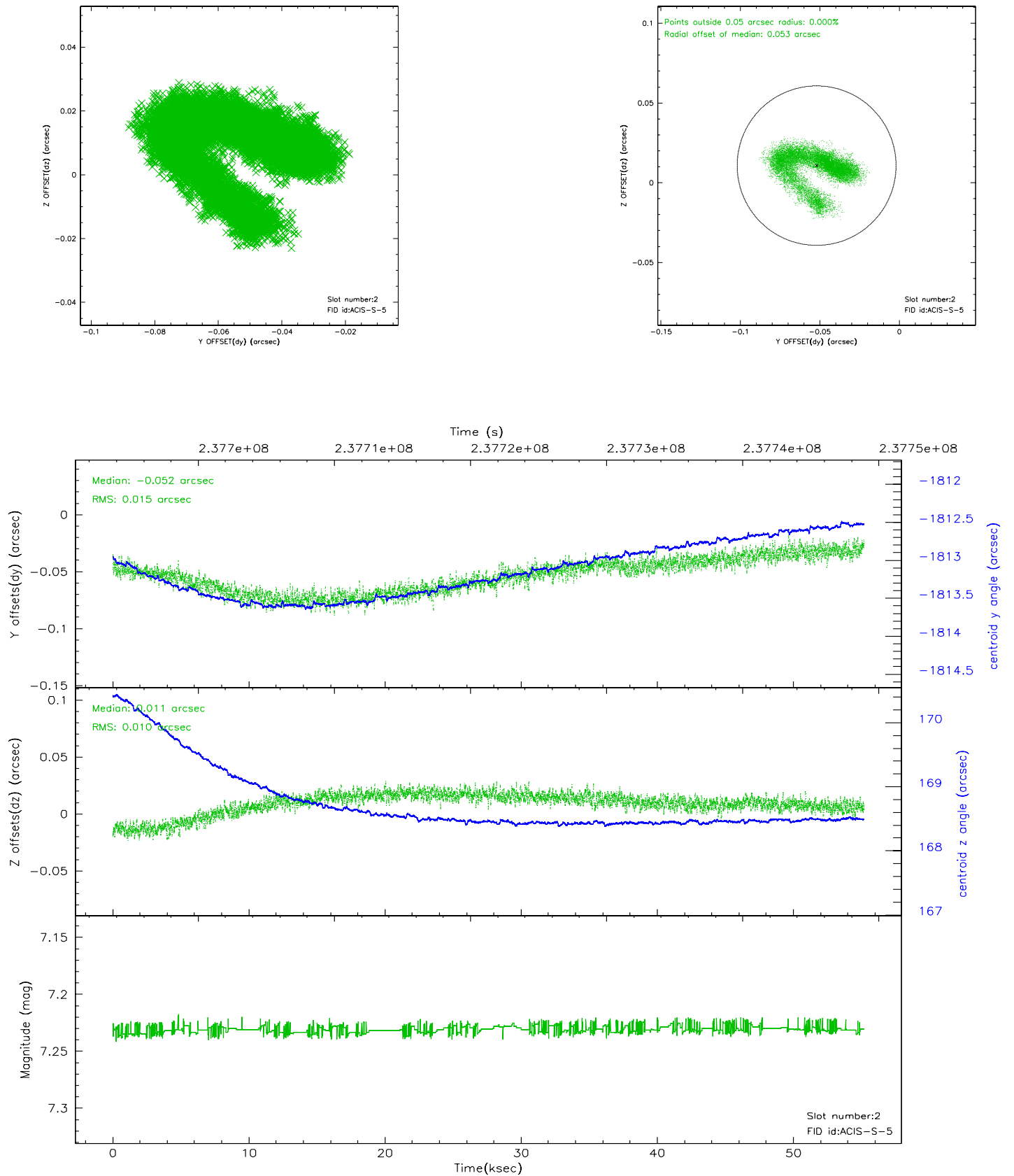
2.5.1 Slot 0



2.5.2 Slot 1

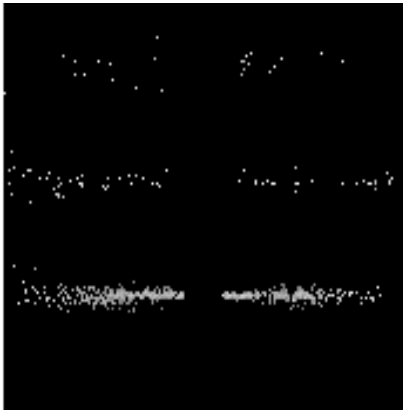


2.5.3 Slot 2

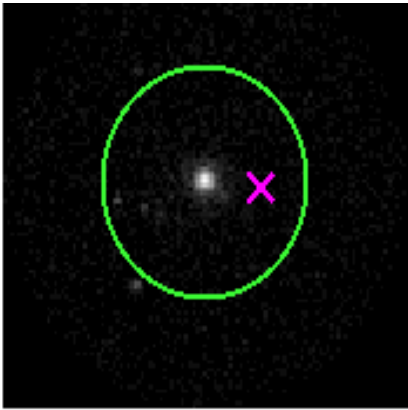


3 Gratings

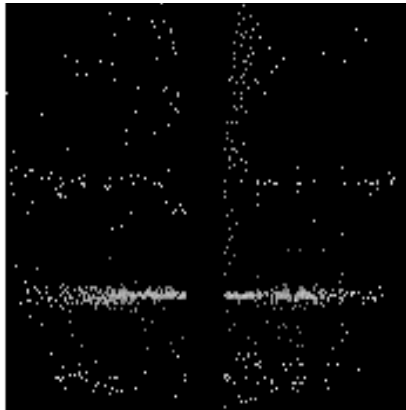
3.1 HEG Arm



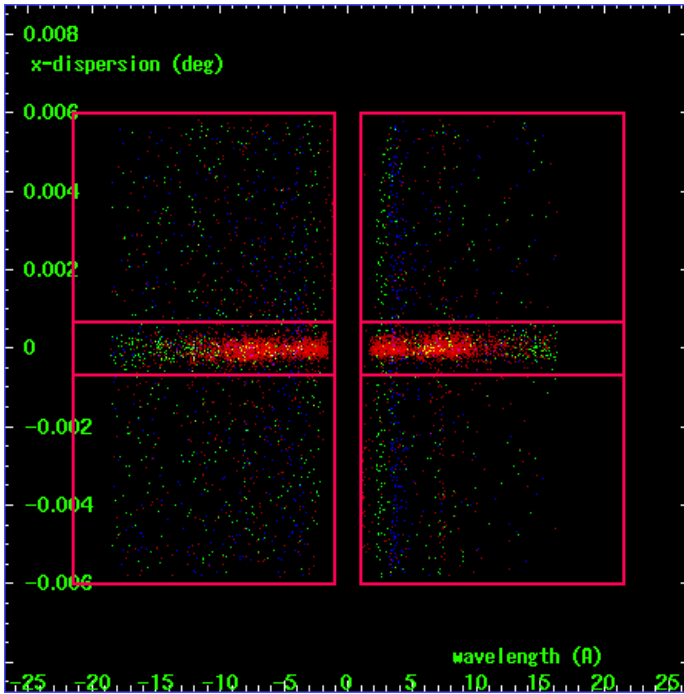
HEG Order Sort 123



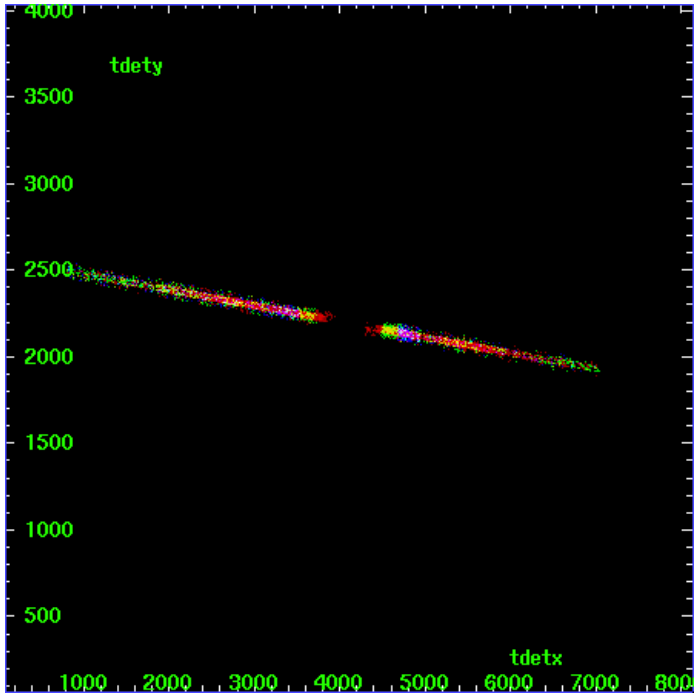
HEG Zero Order



HEG Order Sort ALL

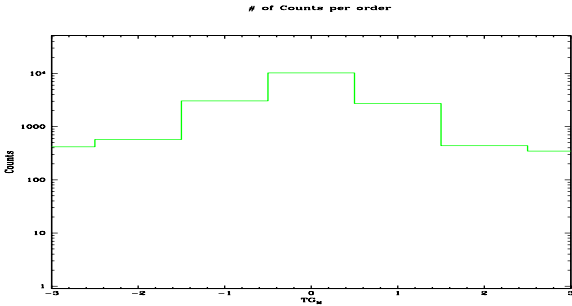


Spot Image HEG

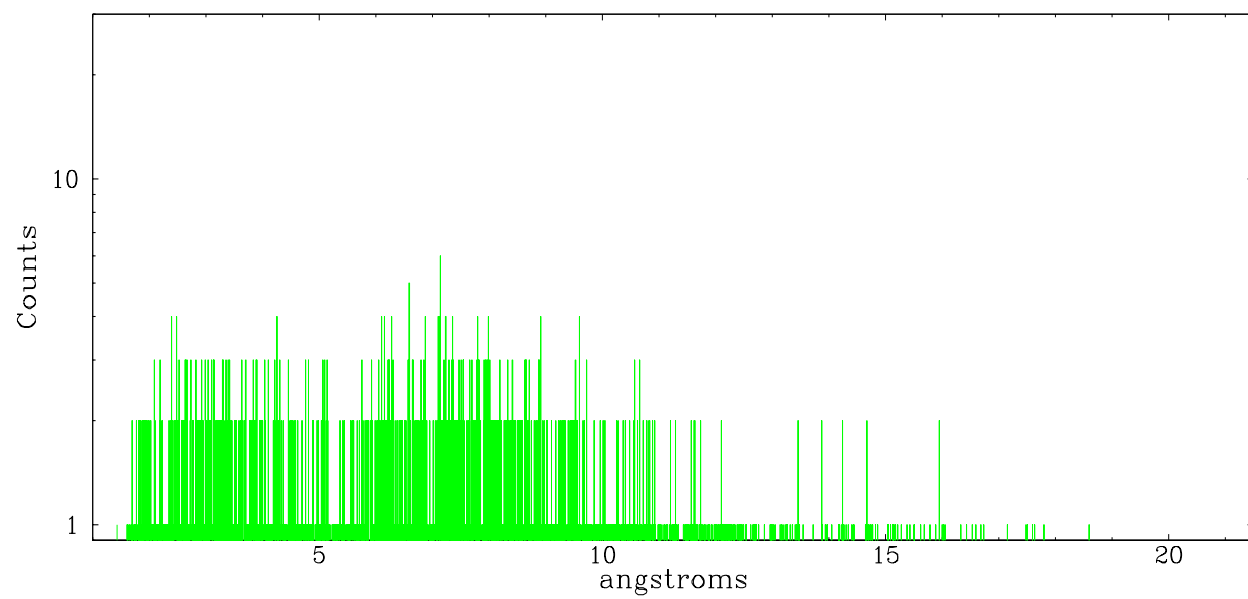


Full Detector HEG

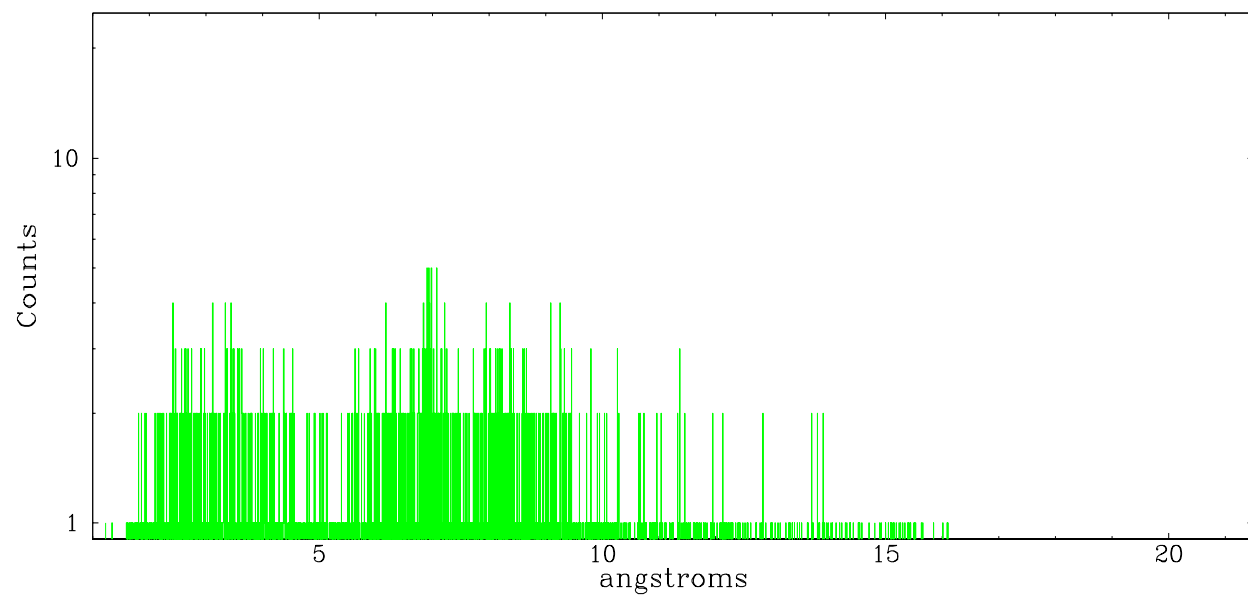
	order -3	order -2	order -1	order 0	order 1	order 2	order 3
Events	417	572	3027	10230	2717	436	346



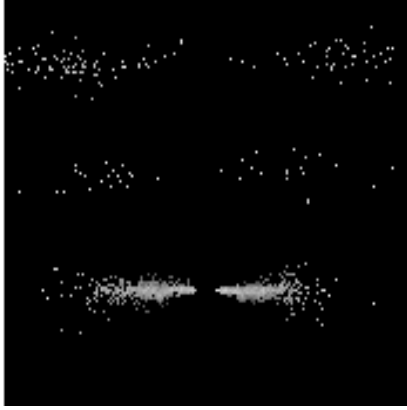
heg order -1



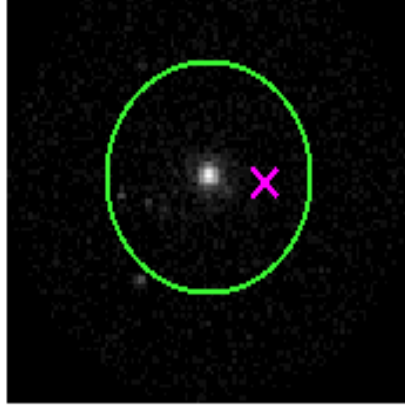
heg order +1



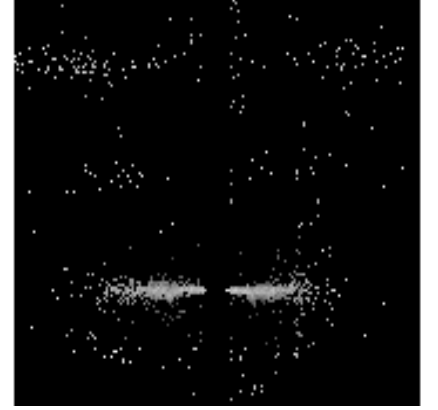
3.2 MEG Arm



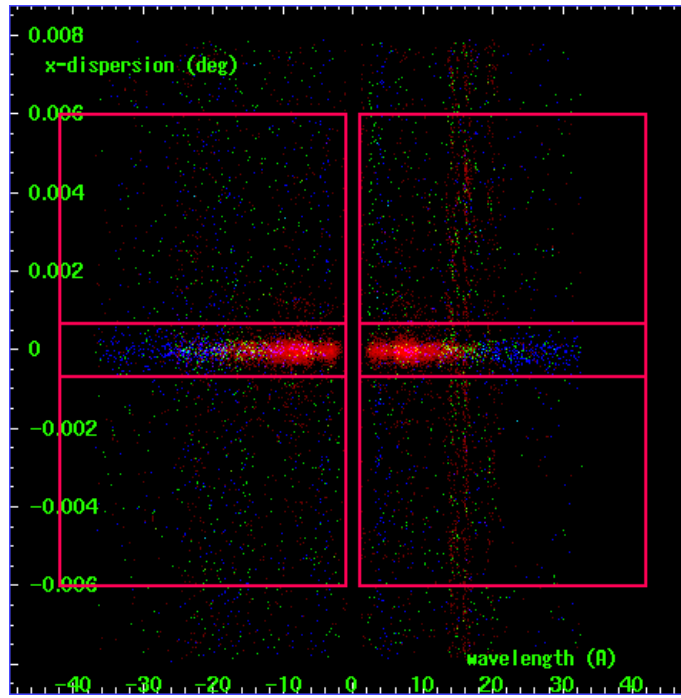
MEG Order Sort 123



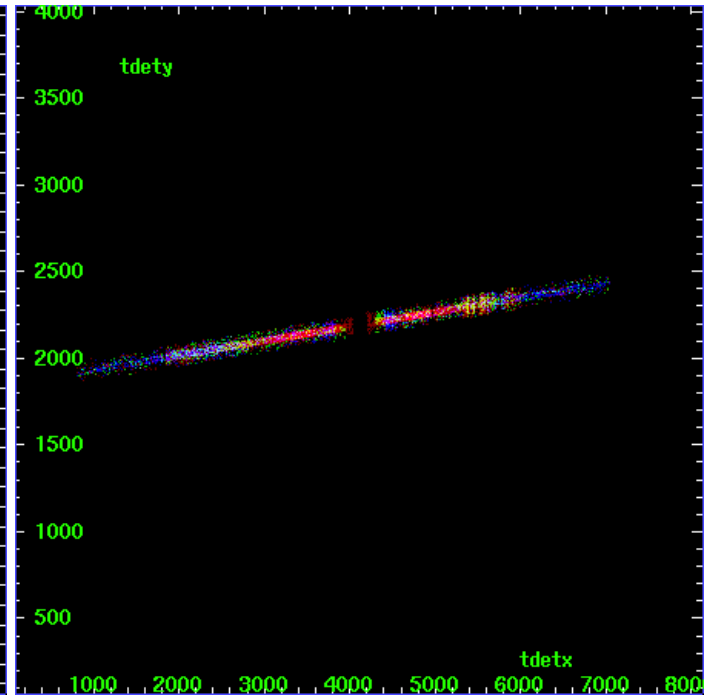
MEG Zero Order



MEG Order Sort ALL

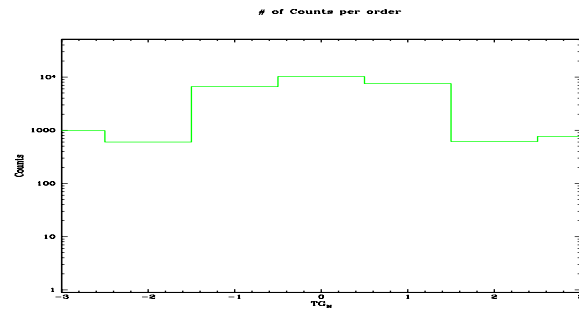


Spot Image MEG

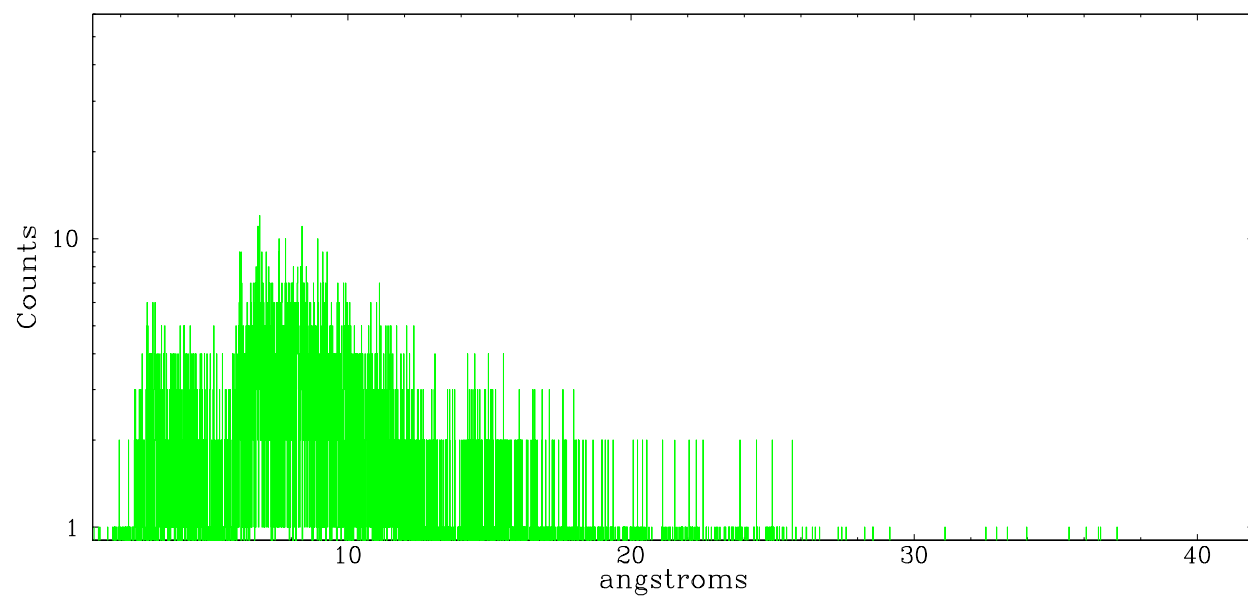


Full Detector MEG

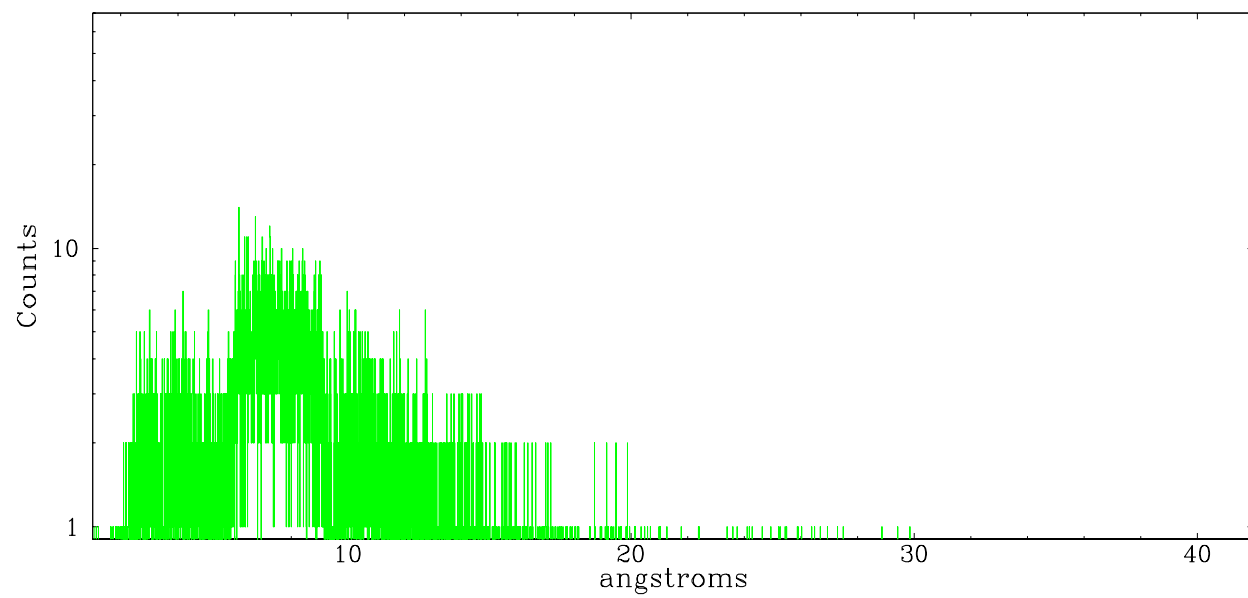
	order -3	order -2	order -1	order 0	order 1	order 2	order 3
Events	978	600	6617	10230	7495	612	762



meg order -1



meg order +1



A Summary

A.1 Status

V&V Scientist	Jen Lauer
V&V Date (YYYY-MM-DD)	2006.03.15
V&V Edition	1
V&V Disposition and Status	OK
V&V Charge Time	55.17759

A.2 Comments