

V&V Reference Report

L2 ASCDS Version : 7.6.7.1

Observation 6276 - L2 Version 002
Chandra X-Ray Center

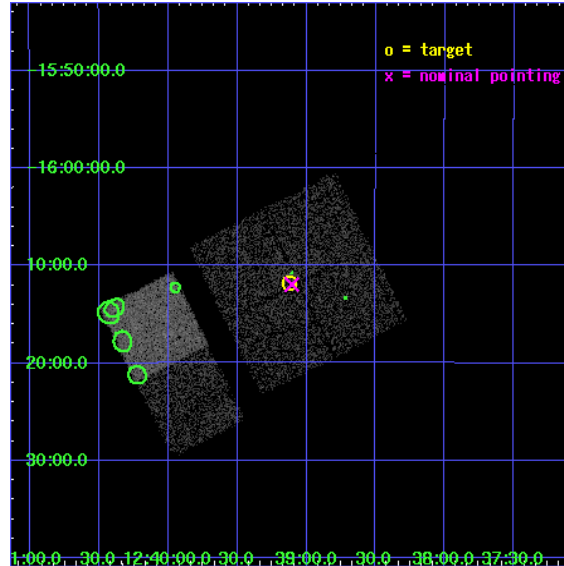
L2 Processing Date : Mar 15 2006

Contents

1	Front	2
2	OBI	3
2.1	OBI	3
2.1.1	Images	3
2.1.2	Bias	3
2.1.3	Parameters	4
2.1.4	Events	4
2.2	Compared Parameters	5
2.3	Aspect	6
2.4	Star Slots	9
2.4.1	Slot 3	9
2.4.2	Slot 4	10
2.4.3	Slot 5	11
2.4.4	Slot 6	12
2.4.5	Slot 7	13
2.5	FID Slots	14
2.5.1	Slot 0	14
2.5.2	Slot 1	15
2.5.3	Slot 2	16
3	Point Sources	17
A	Summary	18
A.1	Status	18
A.2	Comments	18

1 Front

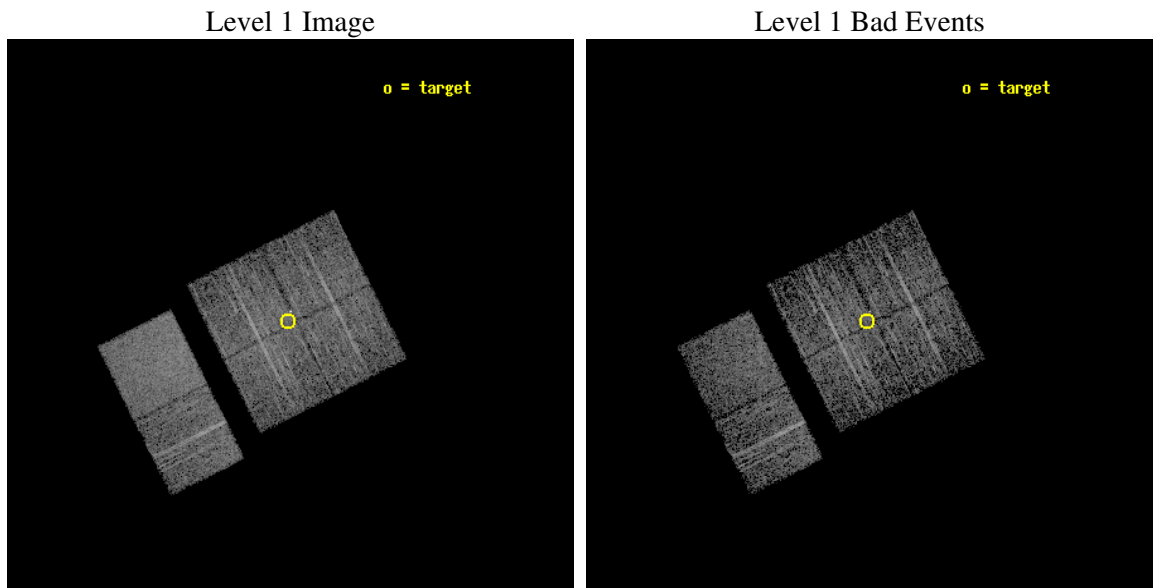
seq_num	701178
obs_id	6276
title	Search for strongly obscured AGNs: support for INTEGRAL all-sky hard X-ray survey
observer	Prof. Rashid Sunyaev
object	IGR J12391-1612
dtcycle	0
cycle	P
ra_targ	189.78
dec_targ	-16.196
ra_nom	189.77638637687
dec_nom	-16.199090022043
roll_nom	243.34940520865
revision	2
ontime	3254.3999878764
livetime	3213.1908156655
ontime0	3254.3999878764
ontime1	3254.3999878764
ontime2	3254.3999878764
ontime3	3254.3999878764
ontime6	3254.3999878764
ontime7	3254.3999878764
l2events	26890



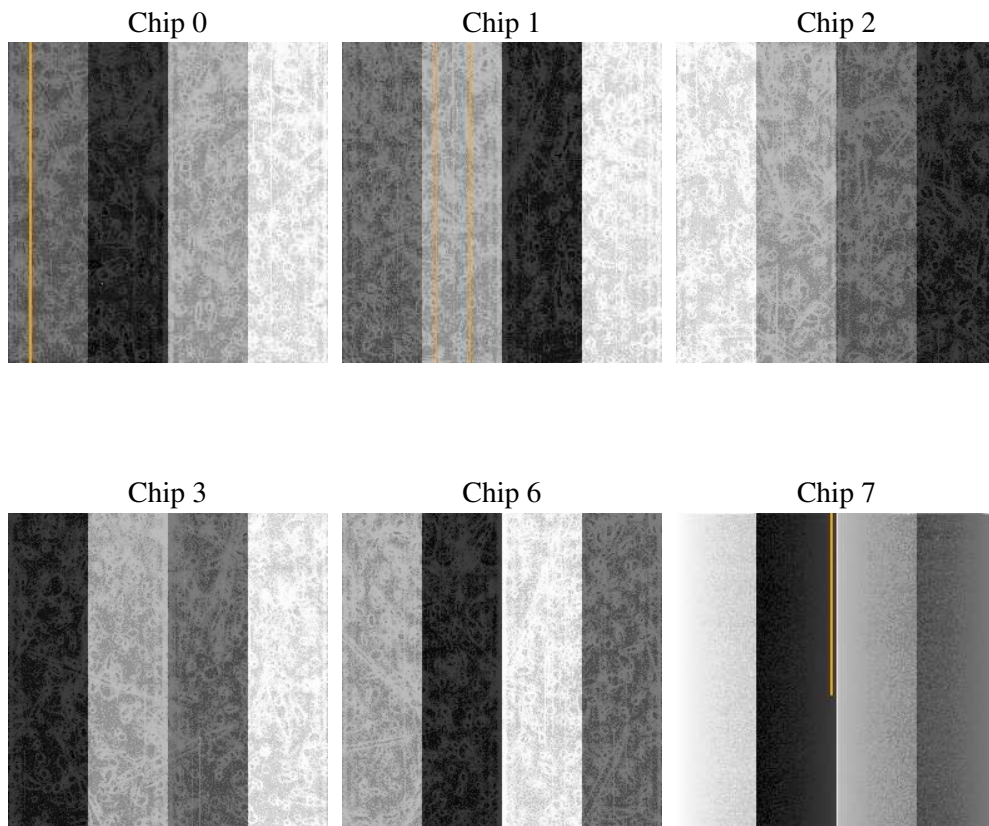
2 OBI

2.1 OBI

2.1.1 Images



2.1.2 Bias



2.1.3 Parameters

obi_num	0
ascdsver	7.6.7.1
caldsver	3.2.1
date	2006-03-15T18:55:45
revision	2

sched_exp_time	3500.000000
ontime	3260.4496890903
ontime0	3260.4496890903
ontime1	3260.4496890903
ontime2	3260.4496890903
ontime3	3260.4496890903
ontime6	3260.4496890903
ontime7	3260.4496692121
l1events	163039

2.1.4 Events

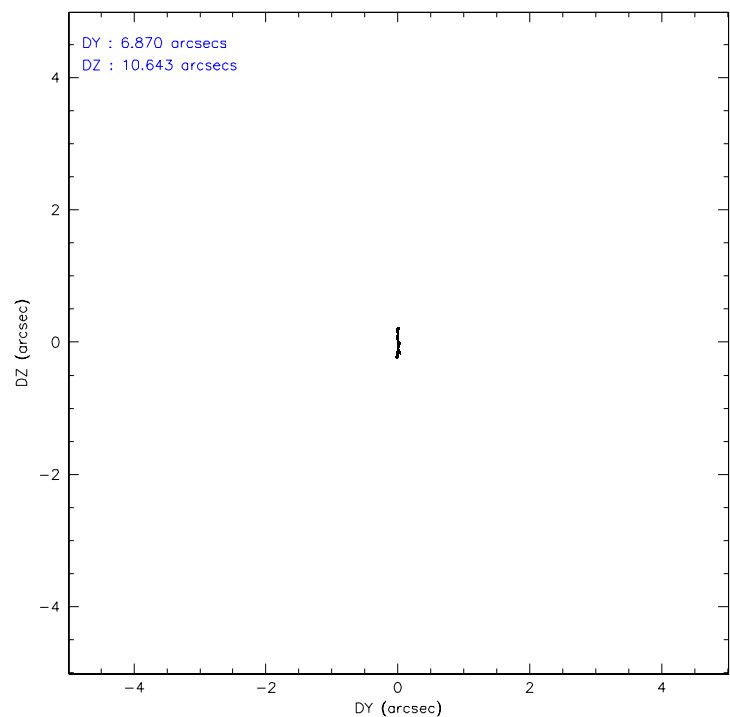
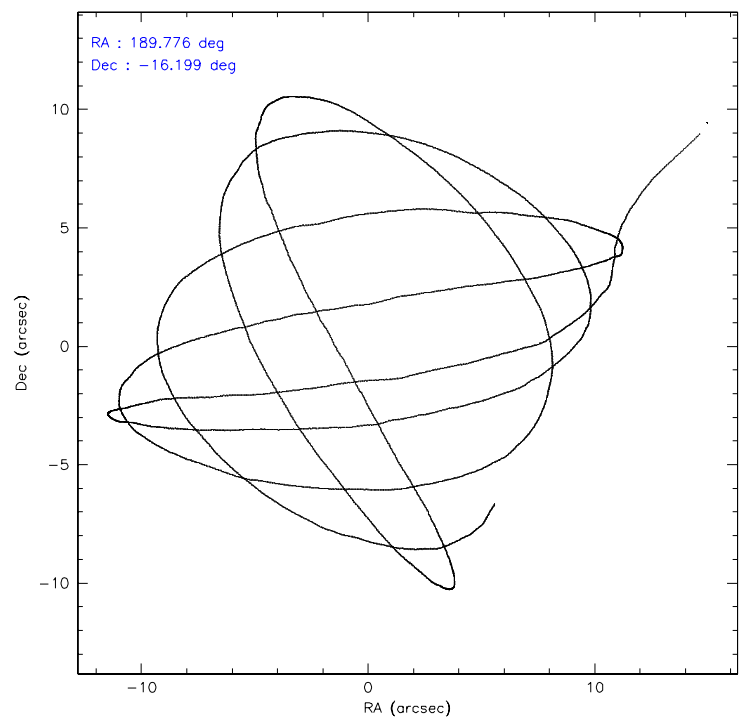
	ccd 0	ccd 1	ccd 2	ccd 3	ccd 6	ccd 7
level 1 events	24879	24200	25425	26633	26631	35271
rejected events	21730	20953	22459	23242	23468	21835
rejected %	87%	86%	88%	87%	88%	61%

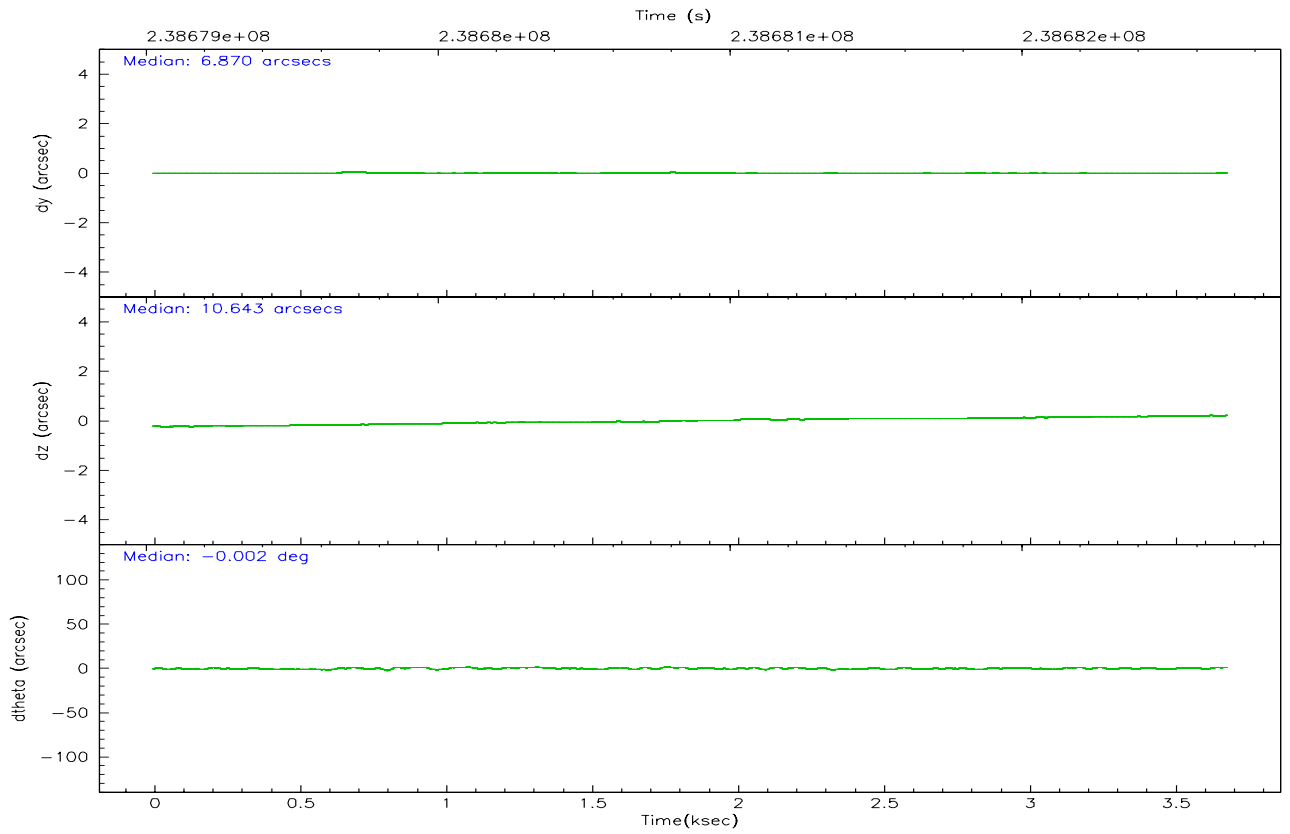
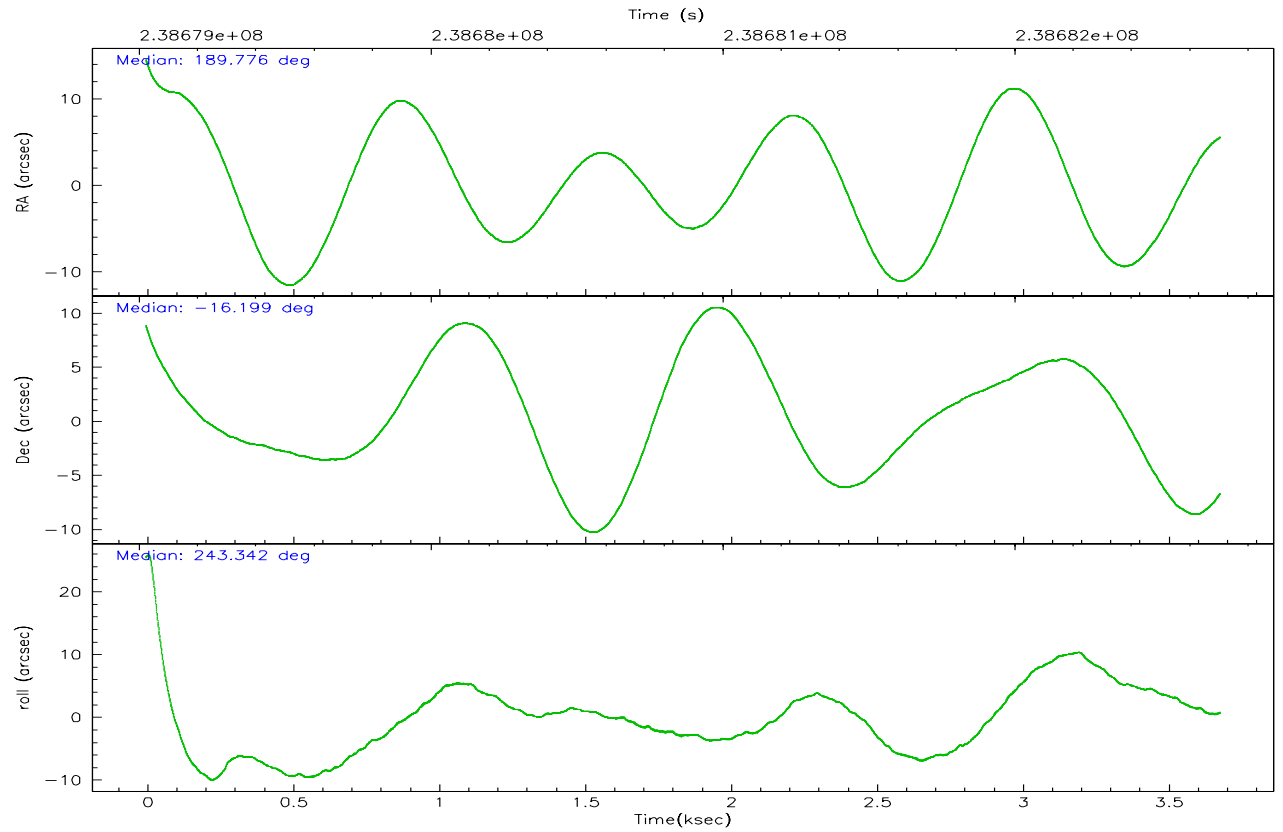
	ccd 0	ccd 1	ccd 2	ccd 3	ccd 6	ccd 7
grade 0 events	1385	1309	1378	1527	1277	792
	5%	5%	5%	5%	4%	2%
grade 1 events	13	11	21	52	12	17
	0%	0%	0%	0%	0%	0%
grade 2 events	691	733	588	662	648	3383
	2%	3%	2%	2%	2%	9%
grade 3 events	270	304	262	338	294	612
	1%	1%	1%	1%	1%	1%
grade 4 events	267	281	264	334	278	648
	1%	1%	1%	1%	1%	1%
grade 5 events	1038	1148	937	1205	1237	2241
	4%	4%	3%	4%	4%	6%
grade 6 events	542	625	478	535	666	8013
	2%	2%	1%	2%	2%	22%
grade 7 events	20673	19789	21497	21980	22219	19565
	83%	81%	84%	82%	83%	55%

2.2 Compared Parameters

Parameter	Planned	Actual	Parameter	Planned	Actual
Instrument	ACIS	ACIS	Obspar format version number	6	6
Detector	ACIS-012367	ACIS-012367	Obspar file type	PREDICTED	ACTUAL
Grating	NONE	NONE	Obspar update status	NONE	UPDATED
Data mode	FAINT	FAINT	On-chip summing requested	N	N
Observation mode	POINTING	POINTING	Subarray requested	NONE	NONE
Pointing RA	189.774545	189.7763863768725	Alternating exposures requested	N	N
Pointing Dec	-16.171679	-16.1990900220433	Primary exposure time	0.000000	3.2
Pointing Roll	243.140102	243.349405208649			
SIM focus pos (mm)	-0.782348	-0.7809083437167272			
SIM defocus (mm)	0	0.001439871863259334			
SIM translation stage pos (mm)	-233.592463	-233.5874344608287			
SIM translation stage offset (mm)	0	-0.005018542100998502			
Observation start time	238679199.184000	238678418.98125			
Observation start date	2005-07-25T11:45:35	2005-07-25T11:33:38			
Observation end time	238682699.184000	238683473.76899			
Observation end date	2005-07-25T12:43:55	2005-07-25T12:57:53			
Read mode	TIMED	TIMED			

2.3 Aspect



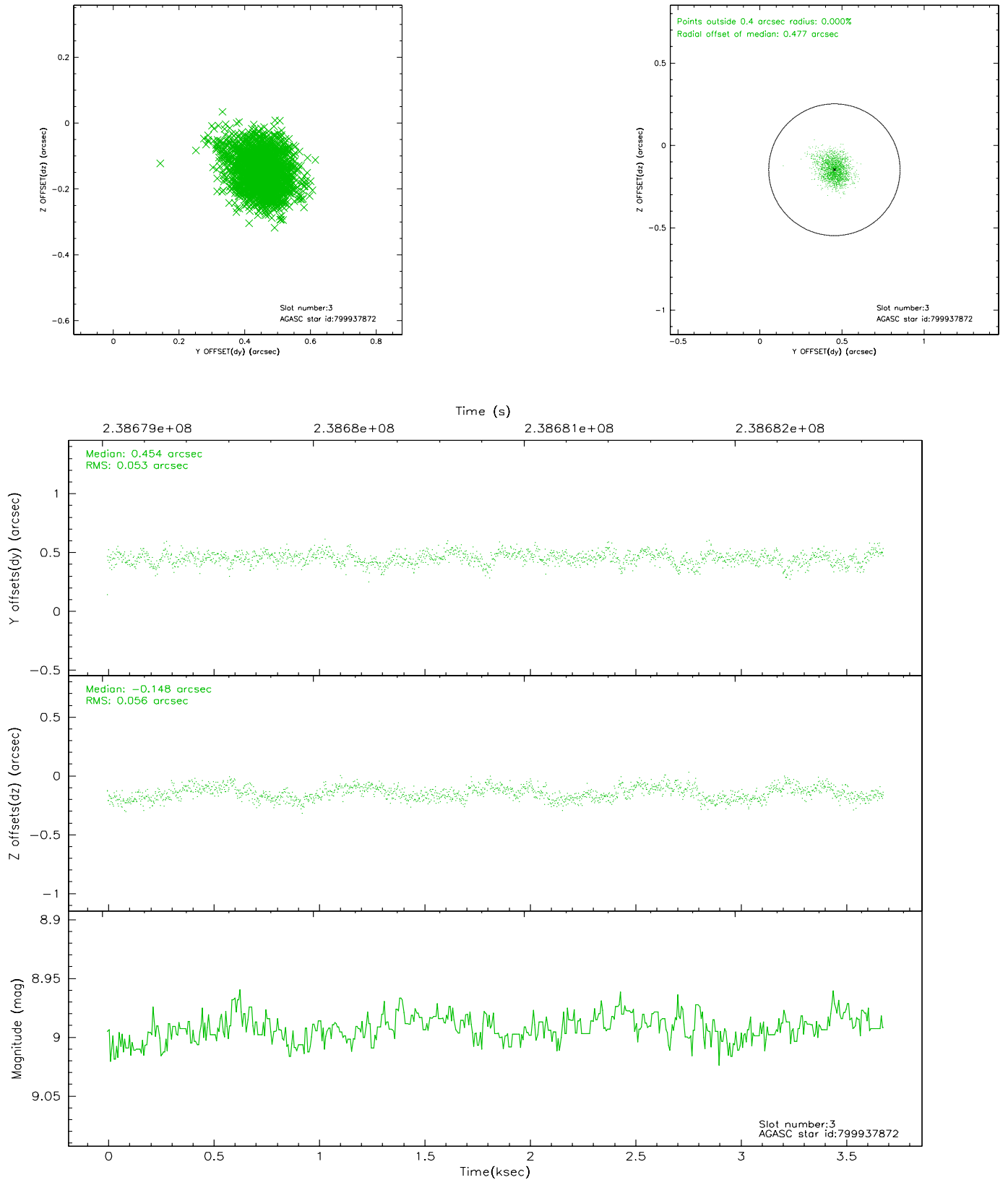


Slot Statistics

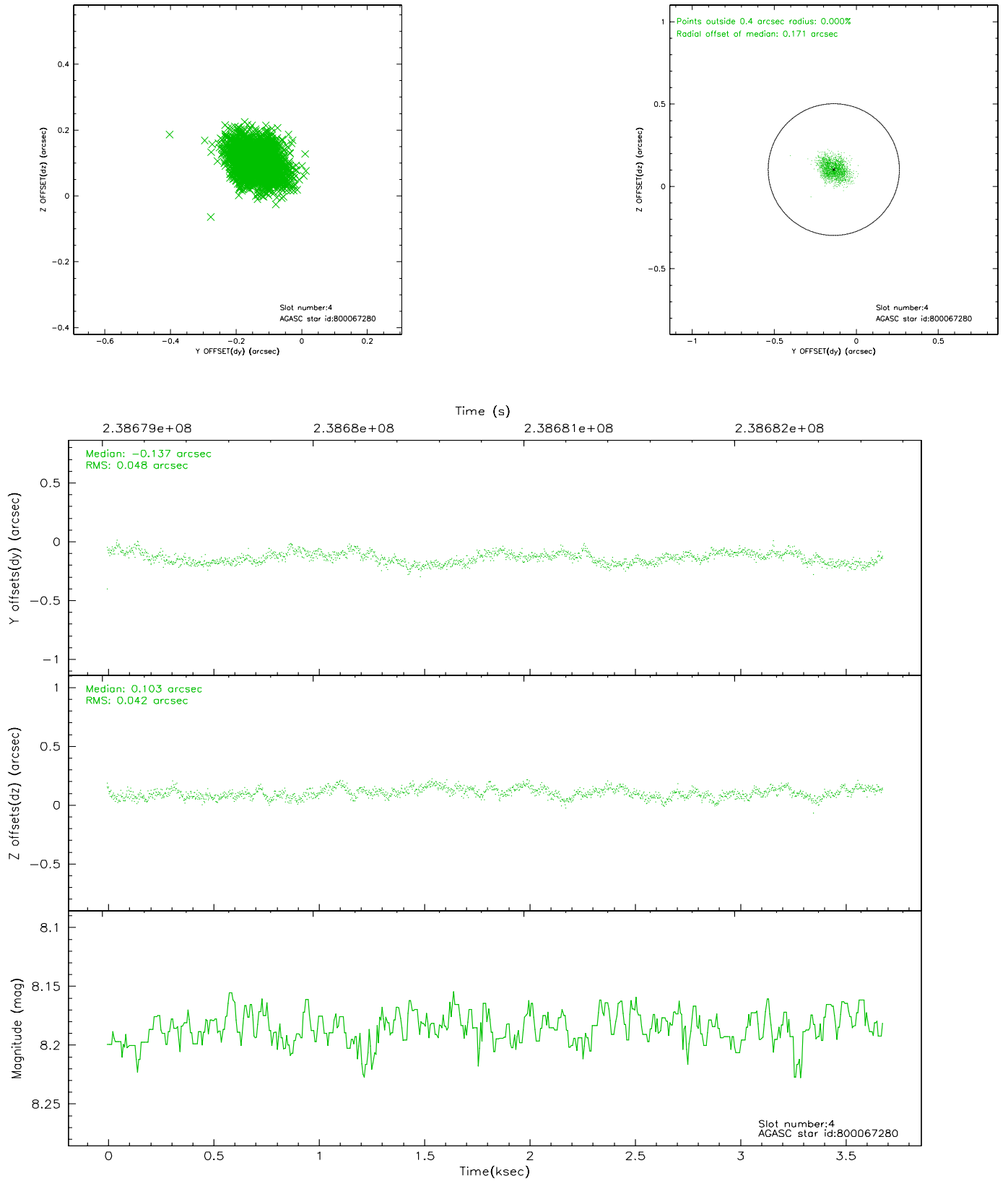
slot	status	id	mag	n_pts	med_dy	med_dz	dr1	dr2	ra	dec	mean_y	mean_z
0	FID	ACIS-I-1	7.25	898	-0.018	-0.005	0.016	0.028	0.000000	0.000000	932.79	-834.14
1	FID	ACIS-I-4	7.18	898	0.089	0.036	0.011	0.019	0.000000	0.000000	2153.91	1064.85
2	FID	ACIS-I-5	7.23	899	-0.169	0.040	0.009	0.019	0.000000	0.000000	-1813.15	1064.67
3	GUIDE	799937872	8.99	1795	0.454	-0.148	0.081	0.134	189.138829	-16.385586	1683.00	-1609.43
4	GUIDE	800067280	8.19	1797	-0.137	0.103	0.068	0.109	190.179145	-16.146783	-709.95	1207.29
5	GUIDE	800067728	8.79	1797	-0.170	-0.064	0.074	0.125	189.544492	-15.558456	-1608.77	-1708.58
6	GUIDE	800068504	10.01	1787	0.020	0.269	0.153	0.256	190.210842	-16.342498	-131.73	1621.86
7	GUIDE	799934328	7.37	1796	-0.165	-0.169	0.051	0.081	189.229346	-15.722091	-587.90	-2415.00

2.4 Star Slots

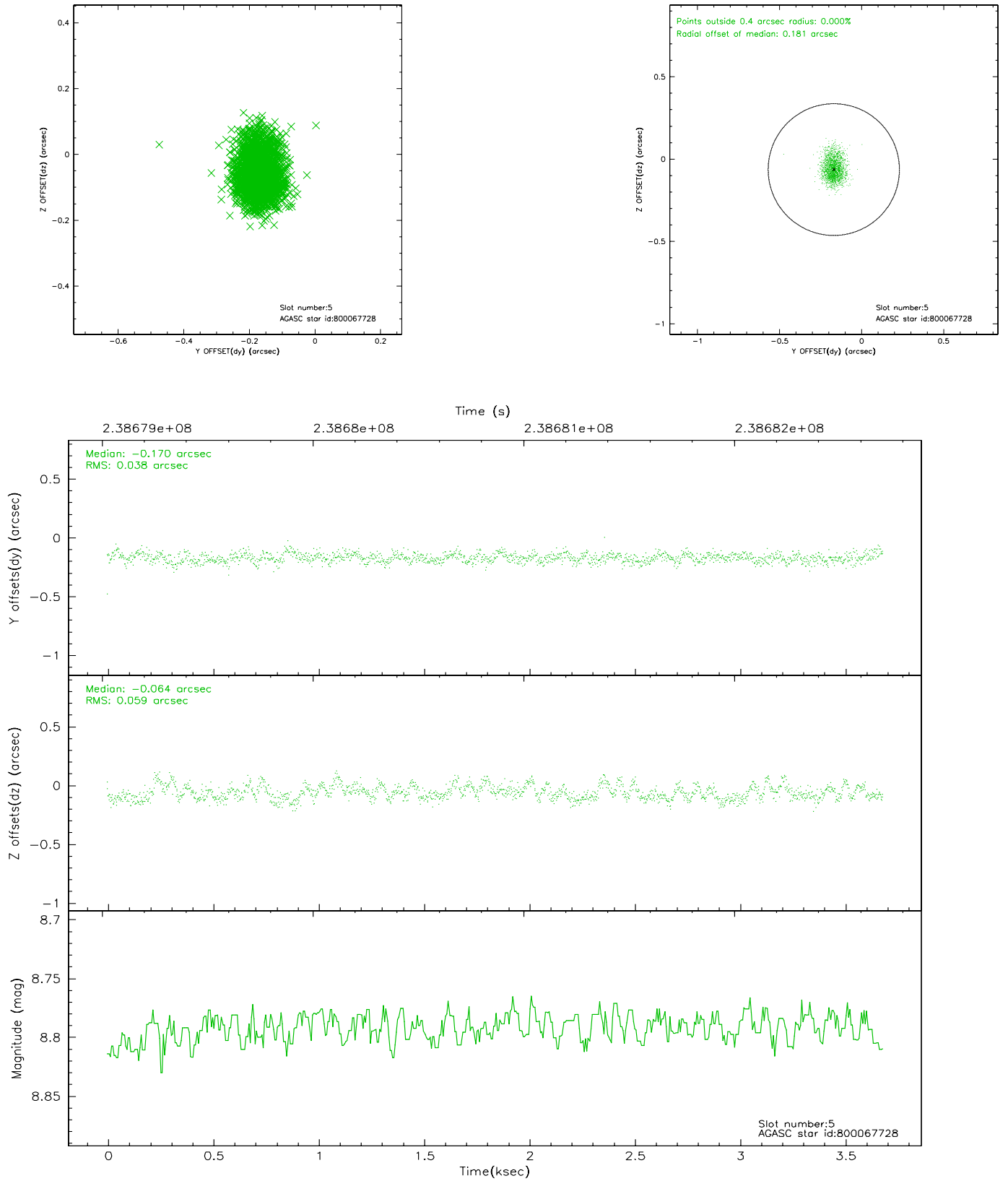
2.4.1 Slot 3



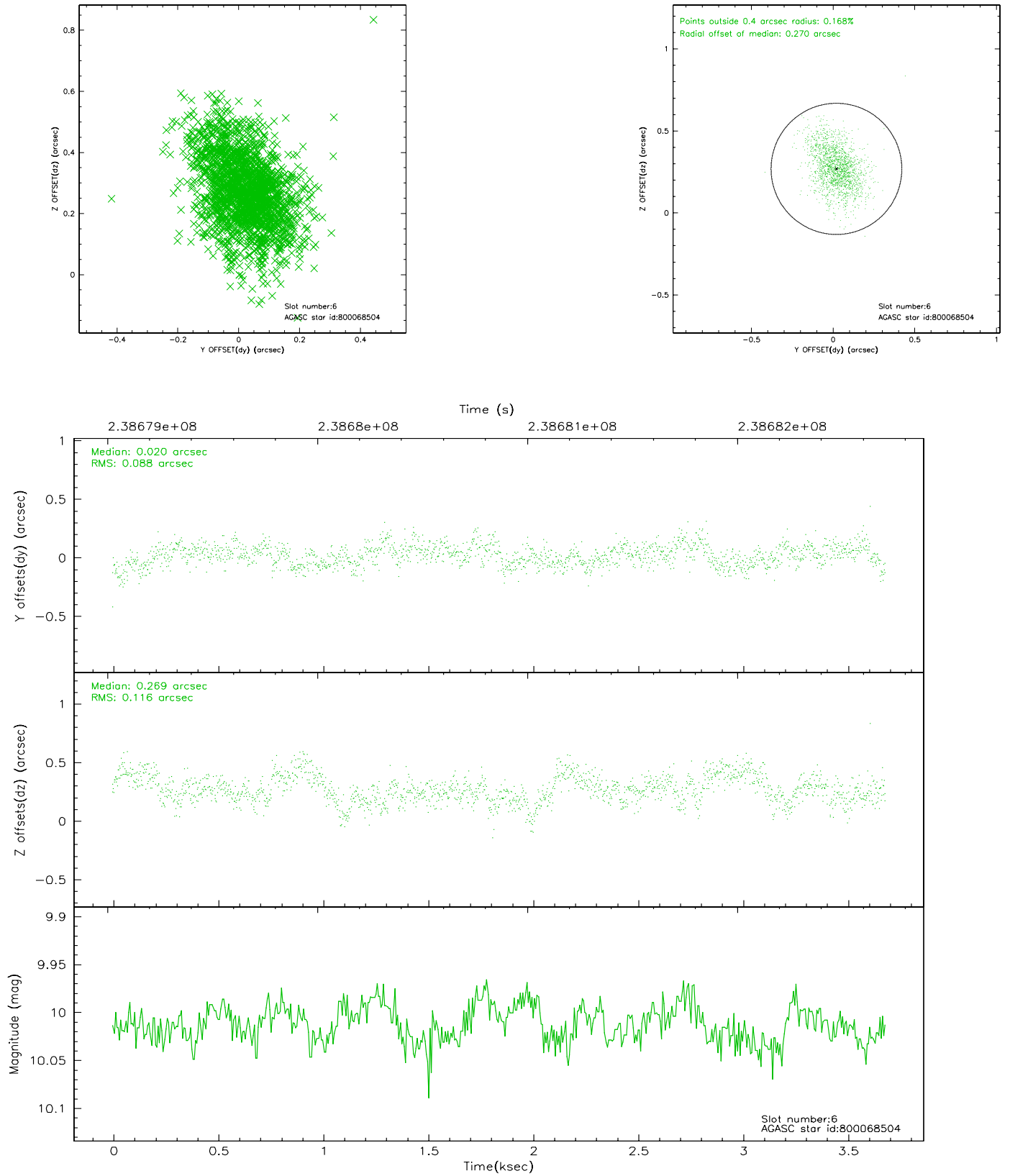
2.4.2 Slot 4



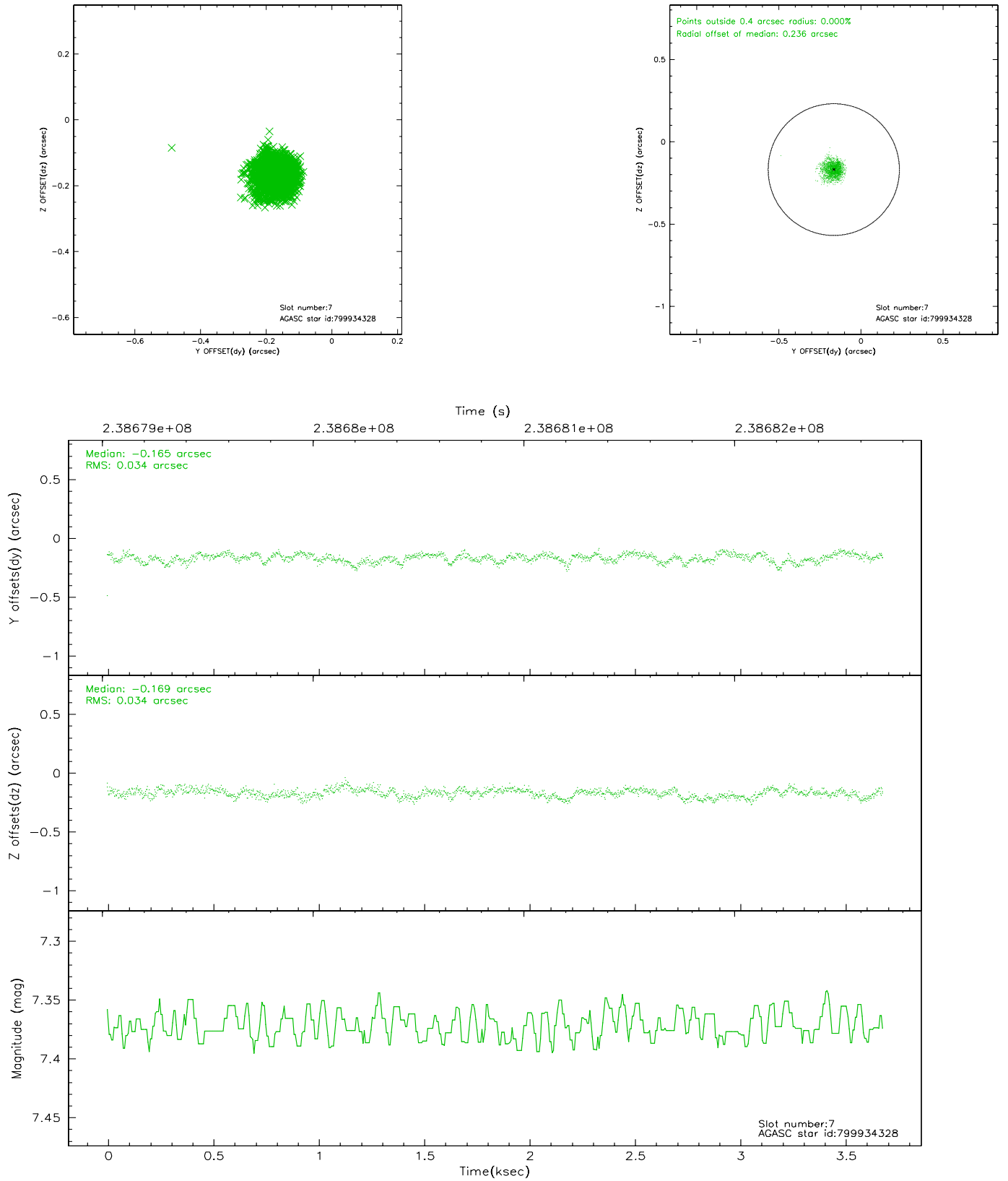
2.4.3 Slot 5



2.4.4 Slot 6

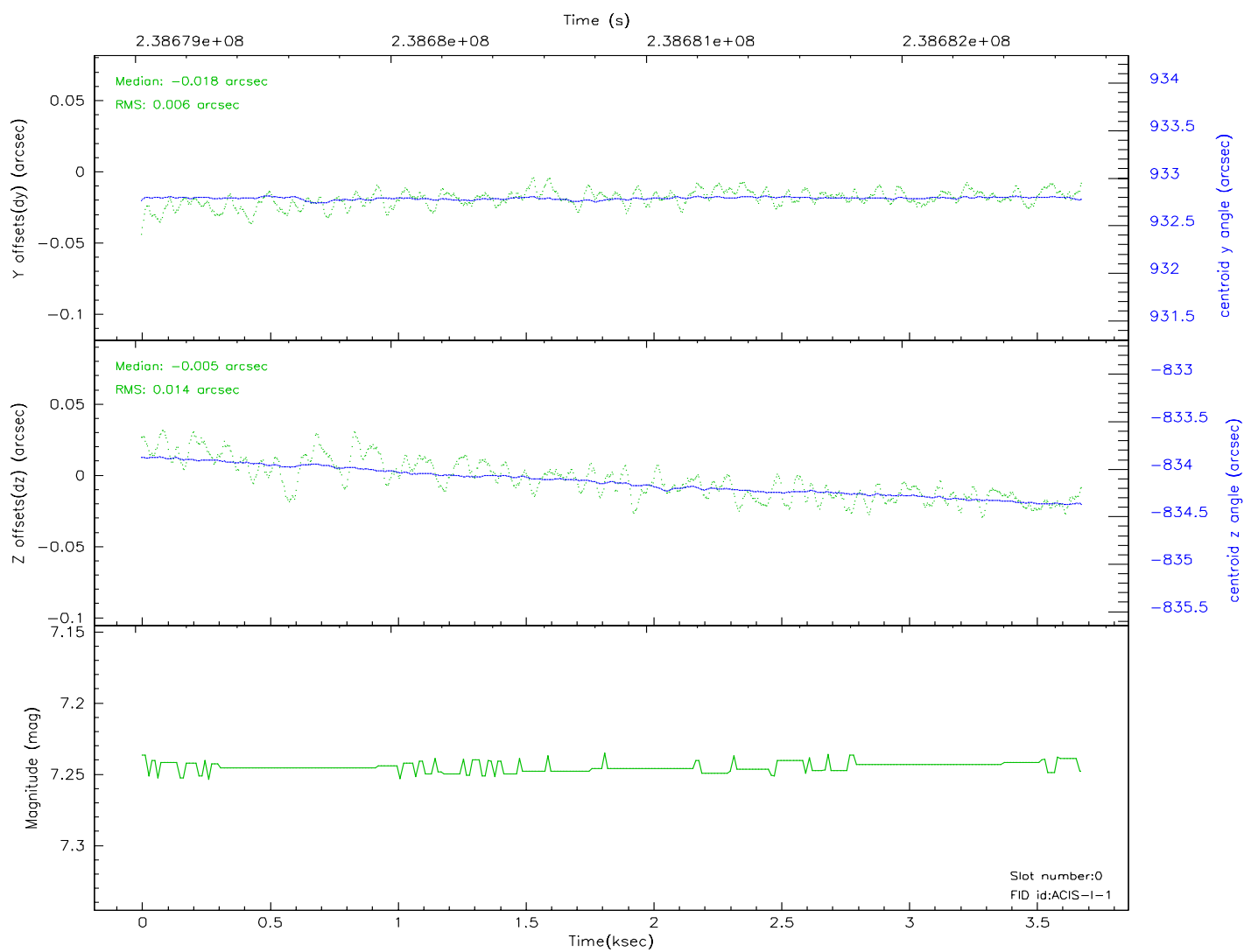
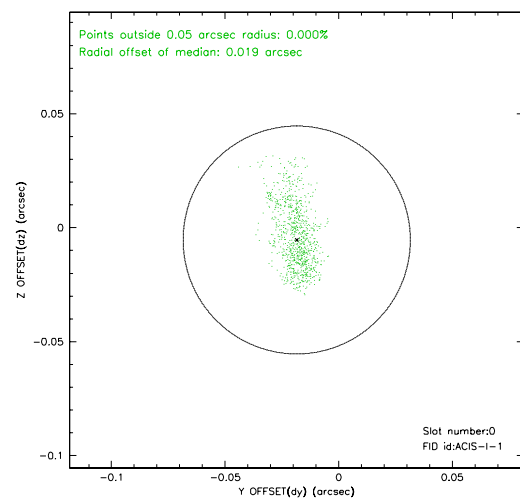
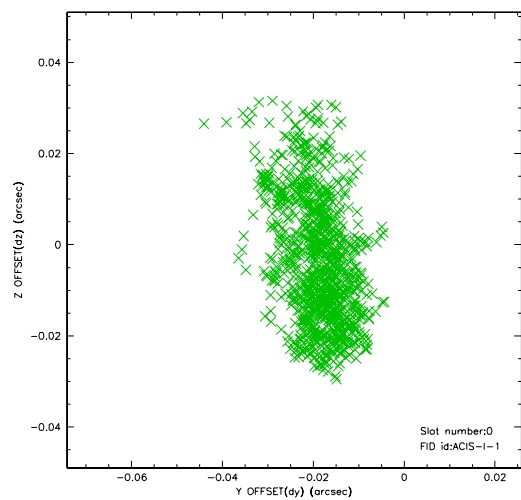


2.4.5 Slot 7

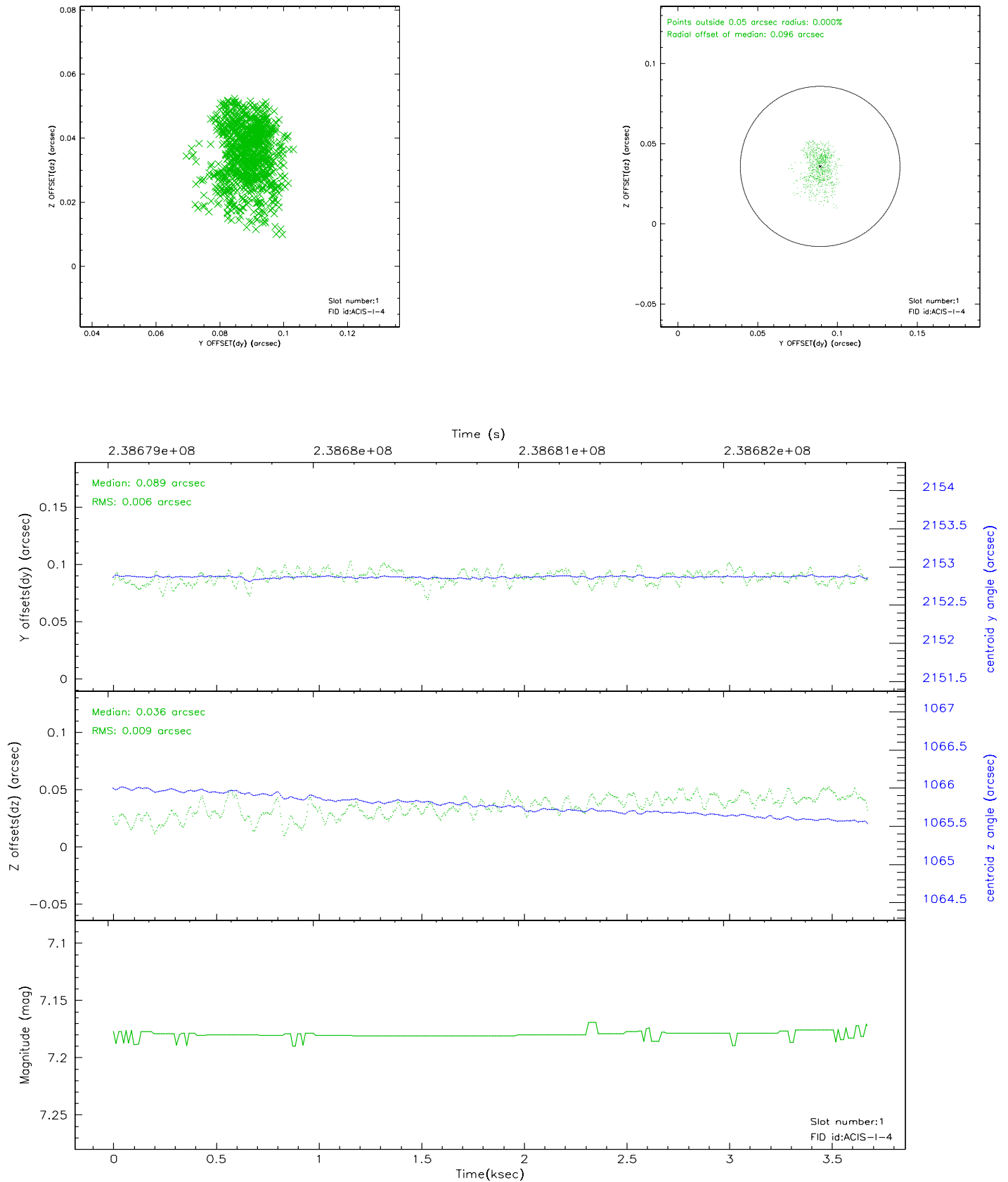


2.5 FID Slots

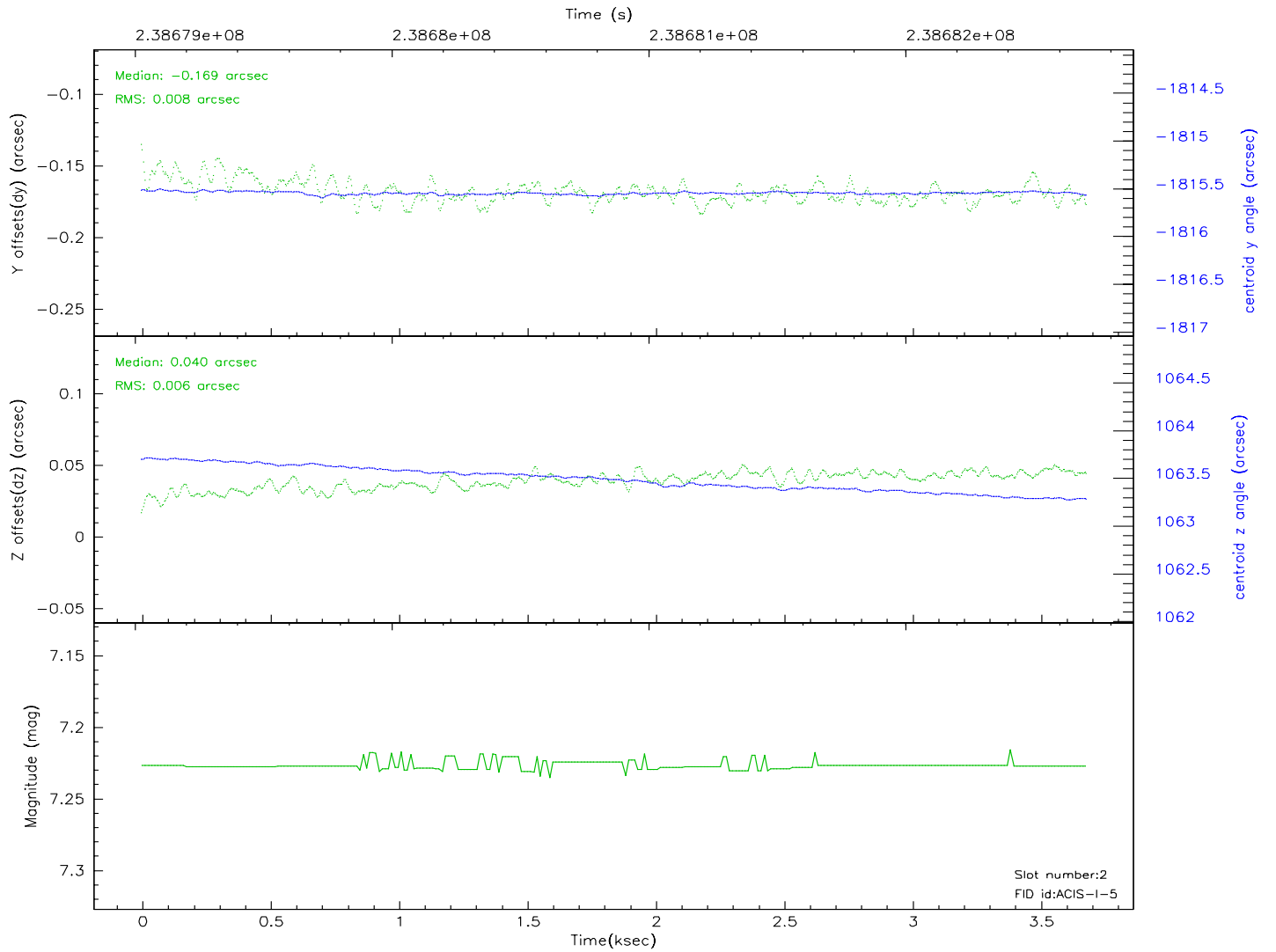
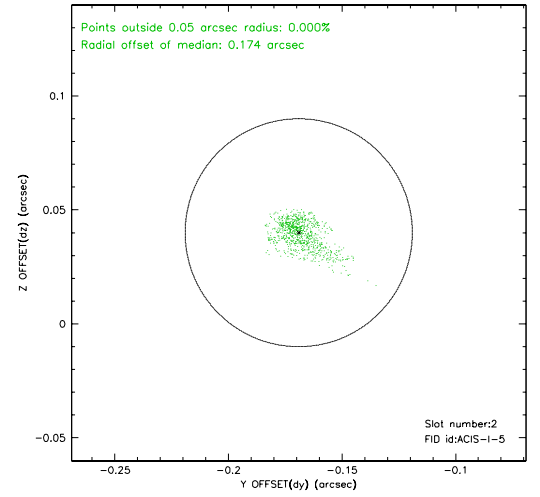
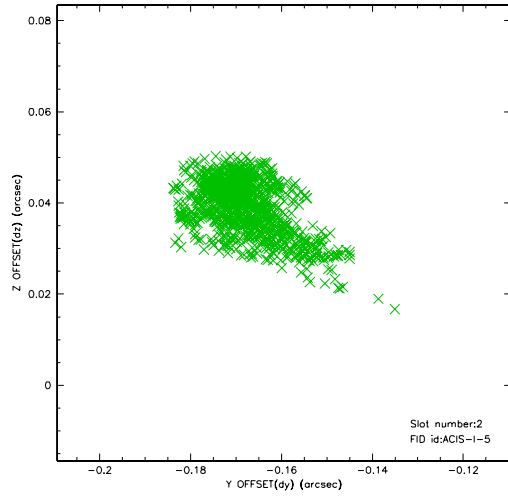
2.5.1 Slot 0



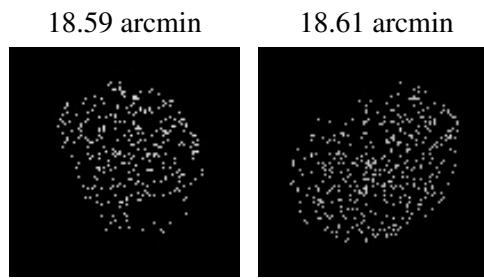
2.5.2 Slot 1



2.5.3 Slot 2



3 Point Sources



A Summary

A.1 Status

V&V Scientist	Beth Sundheim
V&V Date (YYYY-MM-DD)	2006.03.15
V&V Edition	1
V&V Disposition and Status	OK
V&V Charge Time	3.260449

A.2 Comments